

**Oracle© Enterprise Single Sign-on
Anywhere**

User Guide

Release 11.1.1.2.0

E15582-02

November 2010

Copyright ©2009-2010, Oracle. All rights reserved.

The Programs (which include both the software and documentation) contain proprietary information; they are provided under a license agreement containing restrictions on use and disclosure and are also protected by copyright, patent, and other intellectual and industrial property laws. Reverse engineering, disassembly, or decompilation of the Programs, except to the extent required to obtain interoperability with other independently created software or as specified by law, is prohibited.

The information contained in this document is subject to change without notice. If you find any problems in the documentation, please report them to us in writing. This document is not warranted to be error-free. Except as may be expressly permitted in your license agreement for these Programs, no part of these Programs may be reproduced or transmitted in any form or by any means, electronic or mechanical, for any purpose.

If the Programs are delivered to the United States Government or anyone licensing or using the Programs on behalf of the United States Government, the following notice is applicable:

U.S. GOVERNMENT RIGHTS Programs, software, databases, and related documentation and technical data delivered to U.S. Government customers are "commercial computer software" or "commercial technical data" pursuant to the applicable Federal Acquisition Regulation and agency-specific supplemental regulations. As such, use, duplication, disclosure, modification, and adaptation of the Programs, including documentation and technical data, shall be subject to the licensing restrictions set forth in the applicable Oracle license agreement, and, to the extent applicable, the additional rights set forth in FAR 52.227-19, Commercial Computer Software--Restricted Rights (June 1987). Oracle USA, Inc., 500 Oracle Parkway, Redwood City, CA 94065.

The Programs are not intended for use in any nuclear, aviation, mass transit, medical, or other inherently dangerous applications. It shall be the licensee's responsibility to take all appropriate fail-safe, backup, redundancy and other measures to ensure the safe use of such applications if the Programs are used for such purposes, and we disclaim liability for any damages caused by such use of the Programs.

Oracle, JD Edwards, PeopleSoft, and Siebel are registered trademarks of Oracle Corporation and/or its affiliates. Other names may be trademarks of their respective owners.

The Programs may provide links to Web sites and access to content, products, and services from third parties. Oracle is not responsible for the availability of, or any content provided on, third-party Web sites. You bear all risks associated with the use of such content. If you choose to purchase any products or services from a third party, the relationship is directly between you and the third party. Oracle is not responsible for: (a) the quality of third-party products or services; or (b) fulfilling any of the terms of the agreement with the third party, including delivery of products or services and warranty obligations related to purchased products or services. Oracle is not responsible for any loss or damage of any sort that you may incur from dealing with any third party.

Table of Contents

Abbreviations and Terminology.....	4
About Oracle Enterprise Single Sign-on Anywhere.....	5
Setting Up ESSO-Anywhere.....	6
Updating ESSO-Anywhere.....	9
Rolling Back ESSO-Anywhere.....	10
Uninstalling ESSO-Anywhere.....	11

Abbreviations and Terminology

Following is a list of commonly-used abbreviations and terminology.

Abbreviation or Terminology	Full Name
Administrative Console	ESSO-LM Administrative Console
Agent	Logon Manager
FTU	First Time Use Wizard
ESSO-AM	Oracle Enterprise Single Sign-on Authentication Manager
ESSO-Anywhere	Oracle Enterprise Single Sign-on Anywhere
ESSO-PG	Oracle Enterprise Single Sign-on Provisioning Gateway
ESSO-KM	Oracle Enterprise Single Sign-on Kiosk Manager
ESSO-LM	Oracle Enterprise Single Sign-on Logon Manager
ESSO-PR	Oracle Enterprise Single Sign-on Password Reset

About Oracle Enterprise Single Sign-on Anywhere

Oracle Enterprise Single Sign-on Anywhere (ESSO-Anywhere) is the latest innovation in single sign-on (SSO) technology, using Microsoft's ClickOnce technology to deploy Oracle Enterprise Single Sign-on Logon Manager (ESSO-LM) and other Agents to end users' desktops.

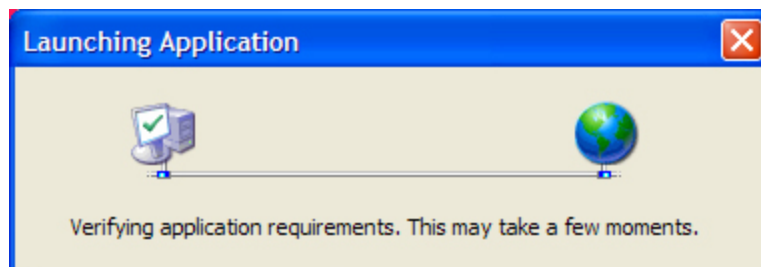
Using the ESSO-Anywhere Console, the administrator creates a deployment package configured with the Oracle products needed by users of an enterprise, making the package available over a Web server or file share. Users download this deployment package from an HTML interface that is included with the ESSO-Anywhere package, and which the administrator customizes. Users can then perform installations of the Oracle suite on their own workstations at the click of a button, with assurance that configurations are correct and ready to run, and without administrator intervention.

Setting Up ESSO-Anywhere

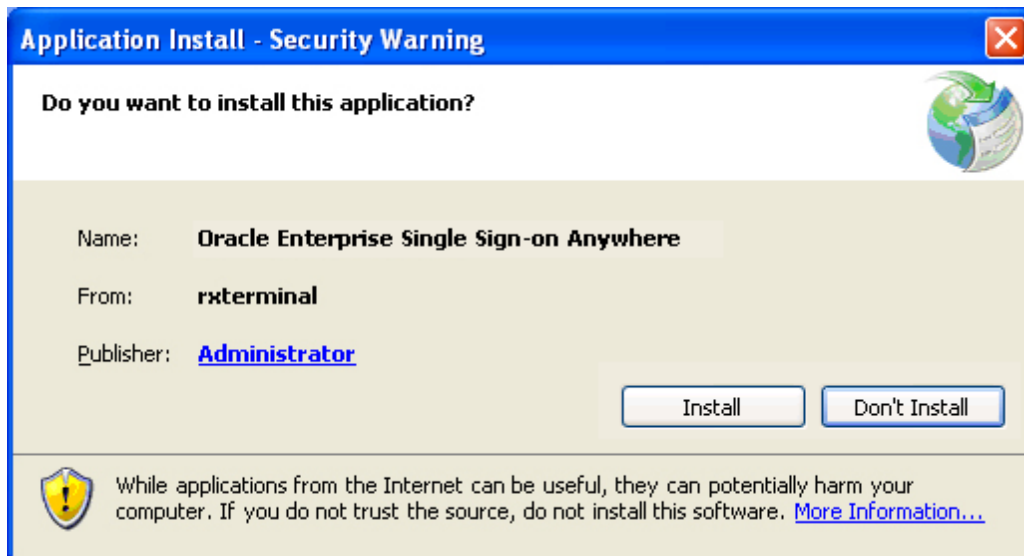
Prior to installing ESSO-Anywhere on your local workstation, you should have received any authentication hardware that you will need, if applicable. When you launch the installer, all the software and settings that you need to run ESSO-LM, and, if applicable, Oracle Enterprise Single Sign-on Authentication Manager (ESSO-AM) and Oracle Enterprise Single Sign-on Provisioning Gateway (ESSO-PG) will automatically be installed with one click. Your administrator will notify you where to locate the ESSO-Anywhere installer, and you will be directed to the ESSO-Anywhere landing page, which will look similar to the following:



1. Click on the **Install Oracle** button to launch the installation package. ESSO-Anywhere scans your workstation to verify that all prerequisites are present.



After ESSO-Anywhere ascertains that all prerequisites are present on your workstation, ESSO-Anywhere asks you to verify that the installation certificate is valid. There are two possibilities:

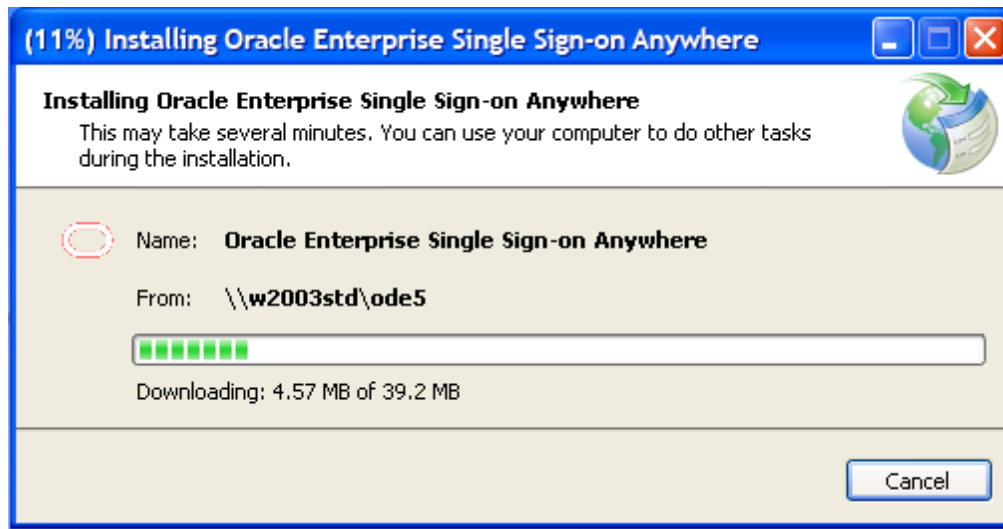


The certificate is valid. Click Install to proceed.



The certificate publisher is unknown. Check with your administrator before proceeding.

2. After you have verified the authenticity of the certificate, click **Install** to begin installation.



ESSO-Anywhere completes the installation. If you have not previously gone through the First Time Use (FTU) wizard, you will be prompted to do so after installation completes. If you have already supplied credentials to the system, your credentials are available immediately. You can begin using ESSO-LM, and any other software included in the ESSO-Anywhere installation.

Updating ESSO-Anywhere

At various times you will receive notification that an update is available for ESSO-Anywhere. The frequency at which this occurs, and whether installing the update is mandatory, are determined by your administrator.

When an update is available, the following screen displays:



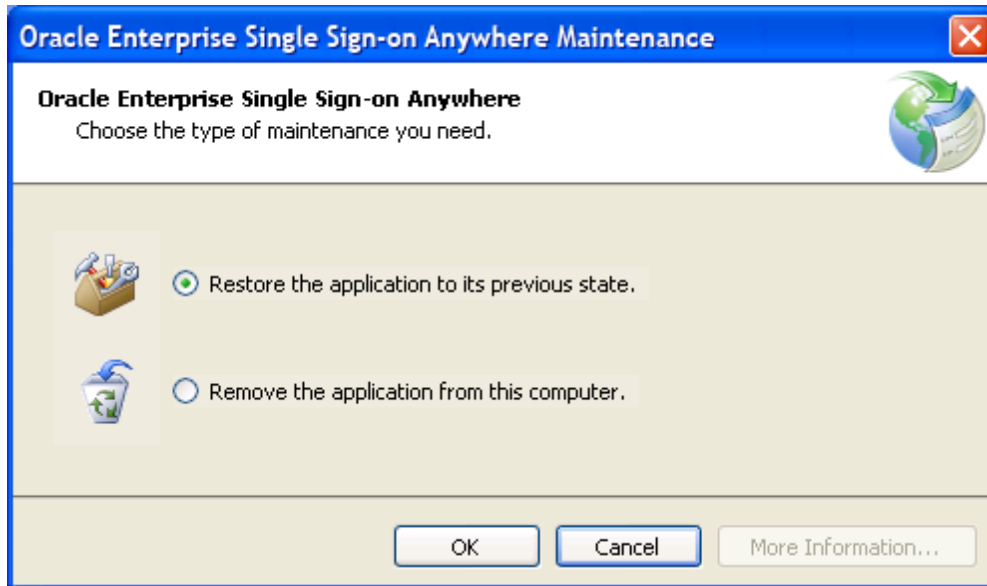
If your administrator has given you the option, you can choose to click **Skip** and not install the update. If you do not have the option or want to install the update, click **OK**.

Rolling Back ESSO-Anywhere

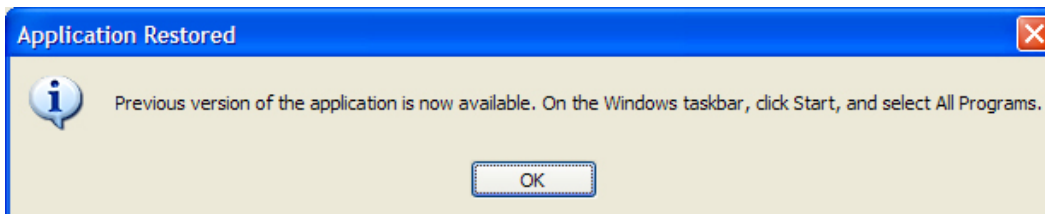
If your administrator decides to roll back your version of ESSO-Anywhere to an earlier version, you will receive a notification.

To perform a rollback:

1. Go to **Control Panel > Add or Remove Programs**.
2. Select **ESSO-Anywhere** from the program list, and click **Change/Remove**.
3. Select **Restore the application to its previous state**. Then click **OK**. ESSO-Anywhere installs the rollback.



4. When the **Application Restored** window displays, click **OK**.



Uninstalling ESSO-Anywhere

To uninstall ESSO-Anywhere:

1. Go to **Control Panel > Add or Remove Programs**.
2. Select **ESSO-Anywhere** from the program list, and click **Change/Remove**.
3. Select **Remove the application from this computer**.
4. Click the **OK** button.

