

**Oracle® Fusion Middleware**

Quick Start Guide for Oracle WebLogic Portal

10g Release 3 (10.3.2)

**E14246-01**

February 2010

E14246-01

Copyright © 2010, Oracle and/or its affiliates. All rights reserved.

This software and related documentation are provided under a license agreement containing restrictions on use and disclosure and are protected by intellectual property laws. Except as expressly permitted in your license agreement or allowed by law, you may not use, copy, reproduce, translate, broadcast, modify, license, transmit, distribute, exhibit, perform, publish, or display any part, in any form, or by any means. Reverse engineering, disassembly, or decompilation of this software, unless required by law for interoperability, is prohibited.

The information contained herein is subject to change without notice and is not warranted to be error-free. If you find any errors, please report them to us in writing.

If this software or related documentation is delivered to the U.S. Government or anyone licensing it on behalf of the U.S. Government, the following notice is applicable:

U.S. GOVERNMENT RIGHTS Programs, software, databases, and related documentation and technical data delivered to U.S. Government customers are "commercial computer software" or "commercial technical data" pursuant to the applicable Federal Acquisition Regulation and agency-specific supplemental regulations. As such, the use, duplication, disclosure, modification, and adaptation shall be subject to the restrictions and license terms set forth in the applicable Government contract, and, to the extent applicable by the terms of the Government contract, the additional rights set forth in FAR 52.227-19, Commercial Computer Software License (December 2007). Oracle USA, Inc., 500 Oracle Parkway, Redwood City, CA 94065.

This software is developed for general use in a variety of information management applications. It is not developed or intended for use in any inherently dangerous applications, including applications which may create a risk of personal injury. If you use this software in dangerous applications, then you shall be responsible to take all appropriate fail-safe, backup, redundancy, and other measures to ensure the safe use of this software. Oracle Corporation and its affiliates disclaim any liability for any damages caused by use of this software in dangerous applications.

Oracle is a registered trademark of Oracle Corporation and/or its affiliates. Other names may be trademarks of their respective owners.

This software and documentation may provide access to or information on content, products, and services from third parties. Oracle Corporation and its affiliates are not responsible for and expressly disclaim all warranties of any kind with respect to third-party content, products, and services. Oracle Corporation and its affiliates will not be responsible for any loss, costs, or damages incurred due to your access to or use of third-party content, products, or services.

---

---

# Contents

<b>Preface</b> .....	ix
Audience .....	ix
Documentation Accessibility .....	ix
Related Documents .....	x
Conventions .....	x
<b>1 Introduction</b>	
<b>2 Preparing and Creating Your Workspace</b>	
2.1 Setting Up Your Workspace and Project Directories .....	2-1
2.2 Creating a Workspace .....	2-2
2.3 Related Information .....	2-3
<b>3 Creating New Portal Projects</b>	
3.1 Choosing a Web Application Framework Technology .....	3-1
3.2 Creating Your EAR Project .....	3-2
3.3 Creating Your Portal Web Application (WAR) Project .....	3-3
3.4 Datasync Project .....	3-3
3.5 Utility Projects .....	3-4
3.6 EJB Projects .....	3-5
3.7 Related Information .....	3-6
<b>4 Using Source Control</b>	
4.1 Team Plug-ins .....	4-1
4.2 Manual Source Control .....	4-1
4.3 Related Information .....	4-2
<b>5 Starting from an Existing Project</b>	
5.1 Check Out Projects from Source Control .....	5-1
5.2 Importing Existing Projects .....	5-1
5.3 Related Information .....	5-2
<b>6 Creating a Domain and Server</b>	
6.1 Creating a Server .....	6-1

6.2	Domain Configuration Wizard .....	6-2
6.3	Related Information.....	6-3
<b>7</b>	<b>Running and Debugging an Application</b>	
7.1	Starting the Server.....	7-1
7.2	Deploying or Debugging the Application.....	7-2
7.3	Related Information.....	7-2
<b>8</b>	<b>Sharing Configuration Objects</b>	
8.1	Strategies for Sharing .....	8-1
8.2	Related Information.....	8-1
<b>9</b>	<b>Portal Web Application Organization</b>	
9.1	Directory Structure .....	9-1
9.2	Portal Organization .....	9-1
9.3	Support Proxy Caching.....	9-2
9.4	Plan for Upgrading WebLogic Portal .....	9-2
9.5	Related Information.....	9-2
<b>10</b>	<b>Developer Productivity</b>	
10.1	Use the Team Plug-in .....	10-1
10.2	Use JRockit .....	10-1
10.3	Run Without Debug when Possible .....	10-1
10.4	Make Sure You Have Enough Heap .....	10-2
10.5	Prefer Quicker Redeploys.....	10-2
10.5.1	Some Resources Do Not Need to Redeploy.....	10-2
10.5.2	Web Applications Redeploy Faster than their Enclosing EARs .....	10-2
10.5.3	EJB Projects in a Sub-classloader Deploy Faster .....	10-2
<b>11</b>	<b>Server Memory and Other Settings</b>	
11.1	Start-up Scripts .....	11-1
11.2	JVM .....	11-2
11.3	Memory Settings .....	11-2
11.4	Class path .....	11-3
11.5	Other Java Options .....	11-3
11.6	PointBase .....	11-3
11.7	Autonomy .....	11-3
11.8	Using the nodebug Argument .....	11-4
11.9	More Complex Settings.....	11-4
<b>12</b>	<b>Application Location</b>	
12.1	Split-source Directories .....	12-1
12.2	Related Information.....	12-1

## List of Examples

2-1	Module Directories Example.....	2-1
12-1	.beabuild.txt file.....	12-1

## List of Figures

2-1	Oracle Enterprise Pack for Eclipse IDE.....	2-3
2-2	Recently Used Perspectives .....	2-3
3-1	Project Explorer View .....	3-2
3-2	Problems View .....	3-3
6-1	Copy Path Information .....	6-3
11-1	Example Start WebLogic Scripts.....	11-2

## List of Tables

3-1	New Portal EAR Project Wizard.....	3-2
3-2	New Portal Web Project Wizard.....	3-3
3-3	Datasync Project Wizard.....	3-4
3-4	Utility Project Wizard.....	3-4
3-5	EJB Project Wizard.....	3-5
6-1	New Server Wizard .....	6-1
6-2	Domain Wizard.....	6-2





---

---

# Preface

This guide provides guidance, best practices, and tips to developers for setting up, using, and increasing productivity when using WebLogic Portal. It is organized in roughly the way you would develop a portal application.

## Audience

This document is intended for portal developers and development team leaders.

## Documentation Accessibility

Our goal is to make Oracle products, services, and supporting documentation accessible to all users, including users that are disabled. To that end, our documentation includes features that make information available to users of assistive technology. This documentation is available in HTML format, and contains markup to facilitate access by the disabled community. Accessibility standards will continue to evolve over time, and Oracle is actively engaged with other market-leading technology vendors to address technical obstacles so that our documentation can be accessible to all of our customers. For more information, visit the Oracle Accessibility Program Web site at <http://www.oracle.com/accessibility/>.

### Accessibility of Code Examples in Documentation

Screen readers may not always correctly read the code examples in this document. The conventions for writing code require that closing braces should appear on an otherwise empty line; however, some screen readers may not always read a line of text that consists solely of a bracket or brace.

### Accessibility of Links to External Web Sites in Documentation

This documentation may contain links to Web sites of other companies or organizations that Oracle does not own or control. Oracle neither evaluates nor makes any representations regarding the accessibility of these Web sites.

### Deaf/Hard of Hearing Access to Oracle Support Services

To reach Oracle Support Services, use a telecommunications relay service (TRS) to call Oracle Support at 1.800.223.1711. An Oracle Support Services engineer will handle technical issues and provide customer support according to the Oracle service request process. Information about TRS is available at <http://www.fcc.gov/cgb/consumerfacts/trs.html>, and a list of phone numbers is available at <http://www.fcc.gov/cgb/dro/trsphonebk.html>.

## Related Documents

For more information, see the following documents in the WebLogic Portal documentation set:

- *Oracle Fusion Middleware Tutorials for Oracle WebLogic Portal*
- *Oracle Fusion Middleware Production Operations Guide for Oracle WebLogic Portal*
- *Oracle Fusion Middleware Portal Development Guide for Oracle WebLogic Portal*

## Conventions

The following text conventions are used in this document:

<b>Convention</b>	<b>Meaning</b>
<b>boldface</b>	Boldface type indicates graphical user interface elements associated with an action, or terms defined in text or the glossary.
<i>italic</i>	Italic type indicates book titles, emphasis, or placeholder variables for which you supply particular values.
monospace	Monospace type indicates commands within a paragraph, URLs, code in examples, text that appears on the screen, or text that you enter.

---

---

# Introduction

This guide provides guidance, best practices, and tips to developers for setting up, using, and increasing productivity when using WebLogic Portal. It is organized in roughly the way you would develop a portal application.

The information in this guide shows one way of accomplishing creating a portal. Because of WebLogic Portal's versatility, you can accomplish the same thing in other ways. This guide provides a minimal amount of step-by-step instructions—just enough to get you started and not waste your time with elementary use of the product. To fill in the details, each section provides references to the relevant documentation.

If you are starting from scratch, start here:

- [Chapter 2](#) – Organizing and getting your project set up.
- [Chapter 3](#) – Creating projects for your portal EAR, WAR, and other objects.
- [Chapter 4](#) – Using Eclipse Team plug-ins for interacting with source control to share projects with your development and quality assurance teams.

If someone has already created the project, start here:

- [Chapter 5](#) – Starting from already existing projects.
- [Chapter 6](#) – Creating a domain and set it up to run from Oracle Enterprise Pack for Eclipse (OEPE).
- [Chapter 8](#) – Sharing artifacts, such as content management nodes, desktops, entitlements, and roles.
- [Chapter 7](#) – Controlling your server and deploying your application.
- [Chapter 9](#) – Tips on organizing your web applications.
- [Chapter 10](#) – Tips for being more productive.
- [Chapter 11](#) – Tweaking your server and domain environment.
- [Chapter 12](#) – Notes on how Oracle Enterprise Pack for Eclipse deploys your application.



---

## Preparing and Creating Your Workspace

Oracle Enterprise Pack for Eclipse is a tool used for portal development. Oracle Enterprise Pack for Eclipse uses workspaces to organize your projects and keep track of your preferences.

This chapter includes the following topics:

- [Section 2.1, "Setting Up Your Workspace and Project Directories"](#)
- [Section 2.2, "Creating a Workspace"](#)
- [Section 2.3, "Related Information"](#)

### 2.1 Setting Up Your Workspace and Project Directories

A workspace is a directory that contains all your configuration and state information, such as your Oracle Enterprise Pack for Eclipse color preferences, recently opened files, caches, and so on. By default your portal projects go in your workspace.

**Tip:** As a best practice, keep your projects outside of the workspace. This organization allows better sharing among team members, more flexibility for linking projects when working with multiple enterprise applications, and easier reassembly if the enterprise application is restructured.

Rather than using the default project location, which is within the workspace directories, your projects should be in their own directories—where they can be managed by source control.

You will need to create separate directories for these projects:

- EAR
- WAR
- Datasync (if used)
- Java utilities (if needed)
- EJB projects (if needed)

[Example 2-1](#) shows an example structure for all the modules. Although, you don't need to create every directory at this point, it may be easier to create them now rather than later (from Oracle Enterprise Pack for Eclipse).

#### **Example 2-1** *Module Directories Example*

```
HOME/workspaces/projectX/           # workspace directory for Project X
```

```
HOME/projects/projectX/           # directory for the Project X projects
    projectXapp/                   # your EAR project
    projectX/                       # your WAR project
    projectXdatasync/              # a Datasync project
    projectXejb/                   # an EJB project
    projectXutility/               # a J2EE utility project

HOME/domains/projectX/            # domain directory for Project X
```

## 2.2 Creating a Workspace

After deciding on the structure or setting up your project directories, create a workspace in Oracle Enterprise Pack for Eclipse. Oracle Enterprise Pack for Eclipse is built on the Eclipse IDE framework. As a result, many of the standard features of Oracle Enterprise Pack for Eclipse are described in the Eclipse documentation, available at <http://eclipse.org> and Oracle Enterprise Pack for Eclipse online help.

To start Oracle Enterprise Pack for Eclipse on:

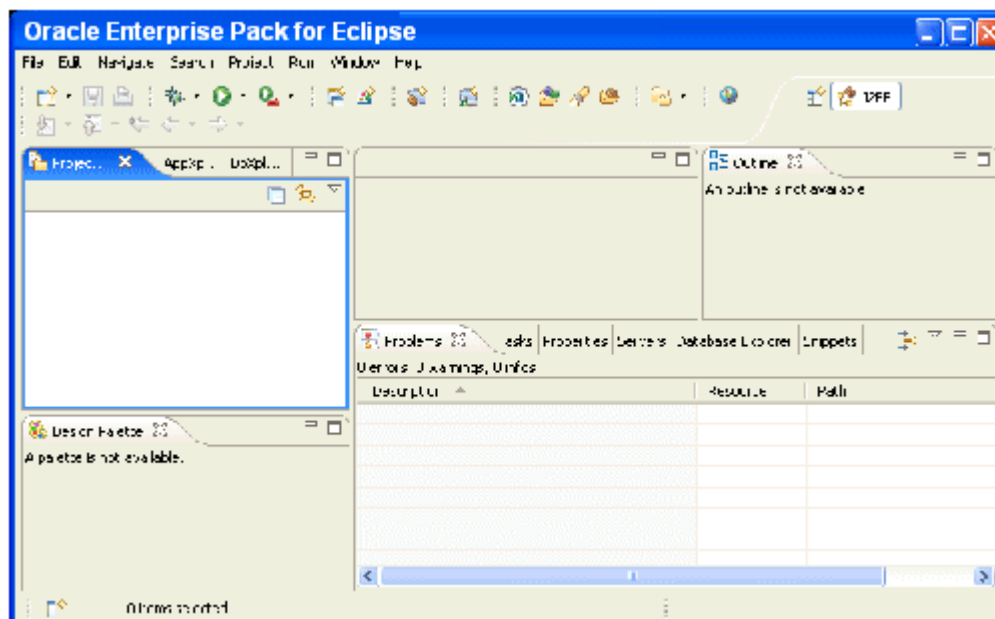
**Microsoft Windows:** From the Start menu, click **All Programs > Oracle Products > Workshop for WebLogic**.

**Linux:** Executable file: <MW\_HOME>/oepe\_11gR1PS1/eclipse/eclipse.exe

When Oracle Enterprise Pack for Eclipse launches, it asks you for your workspace. Select the workspace folder you created in [Section 2.1, "Setting Up Your Workspace and Project Directories"](#) or create a clean folder.

**Tip:** As a best practice, create your workspace outside of the installation directory. This reduces problems if you reinstall or upgrade WebLogic Portal later.

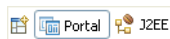
When Oracle Enterprise Pack for Eclipse opens, the initial window displays the Welcome screen. This screen displays useful links for various local and online resources. You can return to the welcome screen at any time with the **Help > Welcome** command. It may be helpful to explore the content before continuing.

**Figure 2–1 Oracle Enterprise Pack for Eclipse IDE**

Oracle Enterprise Pack for Eclipse is the basic development environment for Eclipse-based applications. Oracle Enterprise Pack for Eclipse contains a menu bars, tool bars, code editors, and information panes called views. Views let you browse properties, projects, and so on.

The window layout is called a perspective. A perspective is a preset arrangement of editors and views tailored for performing specific tasks with specific resources. For example, Oracle Enterprise Pack for Eclipse provides perspectives for Java EE (formerly, J2EE) development, debugging, and portal development. Each perspective can be extensively customized or you can create your own.

The perspectives that you recently used are displayed in the upper-right corner of Oracle Enterprise Pack for Eclipse, as shown in [Figure 2–2](#). You can switch back and forth between them at any time without losing any work; you are just changing the way you look at your work.

**Figure 2–2 Recently Used Perspectives**

## 2.3 Related Information

The following topics provide more detail for preparing and creating your workspace:

- *Oracle Fusion Middleware Tutorials for Oracle WebLogic Portal*
- Oracle Enterprise Pack for Eclipse Help > Cheat Sheets > Oracle WebLogic Portal > Develop a Portal application > Open the Portal Perspective





---

---

## Creating New Portal Projects

To get started developing a portal, at a minimum, you need to create a portal EAR and a portal WAR. These are just regular EAR and WAR projects that have been configured to include portal libraries and other artifacts.

This chapter includes the following topics:

- [Section 3.1, "Choosing a Web Application Framework Technology"](#)
- [Section 3.2, "Creating Your EAR Project"](#)
- [Section 3.3, "Creating Your Portal Web Application \(WAR\) Project"](#)
- [Section 3.4, "Datsync Project"](#)
- [Section 3.5, "Utility Projects"](#)
- [Section 3.6, "EJB Projects"](#)
- [Section 3.7, "Related Information"](#)

### 3.1 Choosing a Web Application Framework Technology

Before beginning a portal web project, your team needs to choose an appropriate web application framework. WLP supports several web application frameworks, including:

- **Java Server Faces** – Supported in the default WLP portal web application configuration. You can create WLP portlets based on JSF applications.
- **Apache Struts** – Not supported by default. You have to add the appropriate facets to your portal web project to enable Struts. WLP Struts support lets you create Struts portlets based on Struts web applications. See "Apache Beehive and Apache Struts Supported Configurations" in the *Oracle Fusion Middleware Portal Development Guide for Oracle WebLogic Portal*.
- **Apache Beehive** – Not supported by default. Beehive lets you create Java Page Flow applications, and you can use the WebLogic Portal Portlet Wizard to create Page Flow portlets. You have to add the appropriate facets to your portal web project to enable Beehive. See "Apache Beehive and Apache Struts Supported Configurations" in the *Oracle Fusion Middleware Portal Development Guide for Oracle WebLogic Portal*.

For more information on these web application frameworks, see *Oracle Fusion Middleware Portal Development Guide for Oracle WebLogic Portal* and *Oracle Fusion Middleware Portlet Development Guide for Oracle WebLogic Portal*.

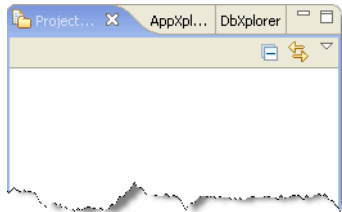
## 3.2 Creating Your EAR Project

To create your EAR project:

1. Start Oracle Enterprise Pack for Eclipse.

On the left side of the Oracle Enterprise Pack for Eclipse is the Project Explorer view. You use this view to navigate within your projects.

**Figure 3–1 Project Explorer View**



2. Right-click within the Project Explorer and select **New > Portal Ear Project**.

---

**Note:** Although other ways exist for creating a new portal ear project, such as File > New > Project... > Portal Ear Project, the path from the Project Explorer is the easiest and most direct.

---

3. Complete the pages in the wizard as required, using the information provided in [Table 3–1](#).

---

**Note:** Oracle Enterprise Pack for Eclipse includes cheat sheets for developing portal applications, how to use Oracle Enterprise Pack for Eclipse features, developing Java applications, and other topics. To access a cheat sheet from the menu bar, select Help > Cheat Sheets.

---

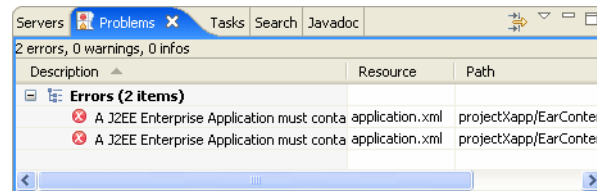
**Table 3–1 New Portal EAR Project Wizard**

In this Wizard ...	Select or Enter...
Project name	This name will become the default base name for several things, such as the portal administration tools URL. For example, if the name is <code>projectXapp</code> , the administration tools URL will be <code>/projectXappAdmin</code> .
Use default	Deselect this check box.  The default location for projects is within your workspace. However, as recommended in <a href="#">Chapter 2</a> , your project should not go within your workspace directory.
Browse	Browse to the location where you want to put your EAR project. This should be an empty directory with the same name as the project. Based on the example in <a href="#">Example 2–1</a> , it would be something like <code>HOME/projects/projectX/projectXapp</code> .  <b>Note:</b> Naming your directories with the same root name is not required, but does eliminate ambiguity. You can create any new directories you need by using the <b>Make New Folder</b> button in the Browse For Folder dialog.
Project Facets page	By default you get the facets needed for a portal. You can also add other facets such as Collaboration or Analytics. If you do not know if you need these facets, you can add them later.

4. After clicking **Finish**, click **Yes** when the dialog asks if you want to open the associated perspective.

Your EAR project is created, but shows an error, as indicated by the red X on the project in the Project Explorer. The Problems view (Figure 3–2) shows EAR projects are required to contain one or more modules.

**Figure 3–2 Problems View**



The error occurs because you have not yet created a WAR project (or other kind of project) in the EAR.

### 3.3 Creating Your Portal Web Application (WAR) Project

To create your portal web application (WAR) project:

1. Within the Project Explorer, right-click your project and select **New > Portal Web Project**.
2. Complete the pages in the wizard as required.

**Table 3–2 New Portal Web Project Wizard**

In this Wizard ...	Select or Enter...
Project name	By default this name is used as the context root of your web application. For example, if you choose a project name of <code>projectX</code> , your URLs for the web application will start with <code>/projectX</code> .
Use default	Deselect this check box.  The default location for projects is within your workspace. However, as recommended in <a href="#">Chapter 2</a> , your project should not go within your workspace directory.
Browse	Browse to the location where you want to put your WAR project. This should be an empty directory with the same name as the project. Based on the example in <a href="#">Example 2–1</a> , it would be something like <code>HOME/projects/projectX/projectX</code> .
Add project to an EAR	Make sure that EAR you created is selected.  This adds the WAR as a module within the EAR and clears the EAR's build error.
Project Facets Page	Carefully look at the facets list and see what you might need. The default set covers most situations. You can always go back and add and remove facets as needed.

### 3.4 Datasync Project

A datasync project is an optional project that stores general purpose portal services data used in the development of personalized applications and portals. These portal services include User profiles, session properties, and campaigns.

To create the Datasync project:

1. From the menu bar, click **File > New > Datasync Project**.

2. Complete the pages in the wizard as required.

**Table 3–3 Datasync Project Wizard**

In this Wizard ...	Select or Enter...
Project name	Name of the Datasync project.
Use Default	Deselect this check box.  The default location for projects is within your workspace. However, as recommended in <a href="#">Chapter 2</a> , your project should not go within your workspace directory.
Browse	Browse to the location where you want to put your Datasync project. This should be an empty directory with the same name as the project. Based on the example in <a href="#">Example 2–1</a> , it would be something like <code>HOME/projects/projectX/projectXdatsync</code> .
EAR Membership	Make sure that the EAR you created is selected.

## 3.5 Utility Projects

Use a Utility project for application-scoped source code. In particular, for plain Java classes that are shared by other projects that are included in your EAR. The Utility project code is in the EAR's `APP-INF/classes` directory. This means it is not a deployed submodule and does not get a `<java>` entry in `META-INF/application.xml`.

---

**Note:** A submodule can be deployed separately from an EAR, which can significantly improve redeployment time. For more information, see [Section 10.5, "Prefer Quicker Redeploys."](#)

---

To create the Utility project:

1. Within the Project Explorer, right-click and select **New > Other**.
2. In the Select a wizard dialog box, select **J2EE > Utility Project**, and then click **Next**.
3. Complete the pages in the wizard as required.

**Table 3–4 Utility Project Wizard**

In this Wizard ...	Select or Enter...
Project name	The name of the utility.
Use Default	Deselect this check box.  The default location for projects is within your workspace. However, as recommended in <a href="#">Chapter 2</a> , your project should not go within your workspace directory.
Browse	Browse to the location where you want to put your Datasync project. This should be an empty directory with the same name as the project. Based on the example in <a href="#">Example 2–1</a> , it would be something like <code>HOME/projects/projectX/projectXutility</code> .
Add project to an EAR	Select the appropriate EAR project from the drop-down list.
Project Facets page	If you will be writing EJB or Java code that uses the WebLogic Portal APIs, be sure to select the facets that give access to those APIs.

## 3.6 EJB Projects

If you are planning to write any EJBs, you need to create an EJB project. An EJB project requires an `ejb-jar.xml` with at least one EJB. If you do not want to create an EJB project now, you can always do it later.

**Tip:** EJB projects are also useful for plain Java code because an EJB is deployed as a submodule. Submodules are advantageous because they can significantly improve the time it takes to redeploy. So you might want to create an EJB project even if you are not using EJBs. For more information, see [Section 10.5.3, "EJB Projects in a Sub-classloader Deploy Faster."](#)

To create an EJB project:

1. From the menu bar, click **File > New > Other**.
2. In the Select a wizard dialog box, select **EJB > WebLogic EJB Project**.
3. Complete the pages in the wizard as required.

**Table 3–5 EJB Project Wizard**

In this Wizard ...	Select or Enter...
Project name	The name of your EJB Project.
Use Default	Deselect this check box.  The default location for projects is within your workspace. However, as recommended in <a href="#">Chapter 2</a> , your project should not go within your workspace directory.
Browse	Browse to the location where you want to put your EJB project. This should be an empty directory with the same name as the project. Based on the example in <a href="#">Example 2–1</a> , it would be something like <code>HOME/projects/projectX/projectXejb</code> .
Add project to an EAR	Select the appropriate EAR project from the drop-down list.
Project Facets page	If you will be writing EJB or Java code in this project that uses the WebLogic Portal APIs, make sure you select the correct facets to give access to those APIs.  <b>Note:</b> The WebLogic EJB Project uses WebLogic EJBGen to generate the Home and Remote interfaces and the <code>ejb-jar.xml</code> file. An EJBGen project does not build or deploy without EJBGen-style EJBs.

The new EJB project shows an error until you create at least one EJB. You can create a placeholder EJB for now. For information on how to do this, see Tutorial: Building Enterprise JavaBeans.

If your EJB project depends on code in your Utility project:

1. In Project Explorer, right-click your EJB project and select **Properties**.
2. On the left side of the Properties dialog box, select **J2EE Module Dependencies**.
3. Under Available dependent JARS, select your utility JAR.
4. Click **OK**.

## 3.7 Related Information

The following topics provide more detail for creating new portal projects:

- "Starting Oracle Enterprise Pack for Eclipse" in *Oracle Fusion Middleware Getting Started with WebLogic Portal for Oracle WebLogic Portal*.
- "Setting up Your Portal Development Environment" in the *Oracle Fusion Middleware Portal Development Guide for Oracle WebLogic Portal*.
- Tutorial: Building Enterprise JavaBeans
- [Section 10.5, "Prefer Quicker Redeploys"](#)
- [Section 10.5.3, "EJB Projects in a Sub-classloader Deploy Faster"](#)
- "Portal EAR Project Wizard" in the *Oracle Fusion Middleware Portal Development Guide for Oracle WebLogic Portal*
- "Portal Datasync Project Wizard" in the *Oracle Fusion Middleware Portal Development Guide for Oracle WebLogic Portal*
- Oracle Enterprise Pack for Eclipse Help > Cheat Sheets > Oracle WebLogic Portal > Develop a Portal application >
  - Create a portal EAR project
  - Create a portal Web project
  - Create a datasync project
  - Associate the portal Web and portal EAR projects
  - Associate the datasync and portal EAR projects
  - Open the Portal Perspective

---

---

## Using Source Control

After you have created a basic set of projects, you can add them to your source control system.

This chapter includes the following topics:

- [Section 4.1, "Team Plug-ins"](#)
- [Section 4.2, "Manual Source Control"](#)
- [Section 4.3, "Related Information"](#)

### 4.1 Team Plug-ins

Oracle Enterprise Pack for Eclipse integrates with source control systems using Eclipse Team plug-ins. Team plug-ins are useful because they handle source control so you can concentrate on developing your projects. Team plug-ins are also smart. For example, they exclude generated files from being checked in because they know the difference between your source code and generated files and classes. Additionally, most Team plug-ins respond properly when you create new files by adding them to source control, and to refactoring by checking out the appropriate files.

Eclipse has integrated features for working with CVS (Concurrent Versions System) repositories. You can also install a plug-in that integrates your source control system with Eclipse.

The following list provides useful information when setting up and working with source control:

- Working in Source Control – In Eclipse, select **Help > Help Contents > Oracle Workshop for WebLogic User's Guide > Common IDE Tasks > Working with Source Control**.
- Team CVS tutorial – In Eclipse, select **Help > Help Contents > Workbench User Guide > Getting started > Team CVS tutorial**.
- Eclipse Plugin Central – <http://www.eclipseplugincentral.com>.

### 4.2 Manual Source Control

If you use source control manually, you will need to exclude generated files and classes. One way to do this is to clean the projects.

---

---

**Note:** This method is not recommended. The following information is provided for reference only.

---

---

1. From the Project menu in the menu bar, turn off **Build Automatically**.
2. Again from the Project menu, select **Clean > Clean all projects**.
3. Deselect the **Start a build immediately** check box and then click **OK**.
4. Once the projects are clean, check in the remaining project files.

---

---

**Note:** Make sure you don't miss the dot files, such as `.project`, `.classpath`, and `.settings`.

---

---

5. Turn **Build Automatically** back on after you have checked the files in.

---

---

**Note:** You will have to keep track of any files you add or change.

---

---

### 4.3 Related Information

The following topics provide more detail for using source control:

- "Managing a Team Development Environment" in the *Oracle Fusion Middleware Production Operations Guide for Oracle WebLogic Portal*
- Understanding the Build Process in Building Applications
- Eclipse Plugin Central – <http://www.eclipseplugincentral.com>.
- **Oracle Enterprise Pack for Eclipse Help > Cheat Sheets > Team/CVS**
- Working with Source Control (Oracle Enterprise Pack for Eclipse document)
- **Oracle Enterprise Pack for Eclipse Help > Help Contents > Workbench User Guide > Getting started > Team CVS tutorial**



---

---

## Starting from an Existing Project

If your project has already been created, start here.

This chapter includes the following topics:

- [Section 5.1, "Check Out Projects from Source Control"](#)
- [Section 5.2, "Importing Existing Projects"](#)
- [Section 5.3, "Related Information"](#)

### 5.1 Check Out Projects from Source Control

Check out your projects from source control.

### 5.2 Importing Existing Projects

To import an existing project:

1. Start Oracle Enterprise Pack for Eclipse.
2. If needed, create a workspace in Oracle Enterprise Pack for Eclipse.

**Tip:** Create your workspace in the same place as your other working files, but not within the project directories. See [Section 2.1, "Setting Up Your Workspace and Project Directories."](#)

3. From the menu bar, select **File > Import**.
4. In the Select dialog box, select **General > Existing Projects into Workspace**, and then click **Next**.
5. Select the top-level project directory (the one that contains all the EJB, WAR, and other project folders). If no common root directory exists, select each project individually.
6. In the Projects list, make sure you select all the projects and import them.

---

---

**Note:** Do not select the **Copy projects into workspace** check box; leave them where they were checked out.

---

---

7. After importing, right-click each project and select **Team > Share Project** for each project.

This associates your projects with your source control. See [Chapter 4](#).

## 5.3 Related Information

The following topics provide more detail for starting from an existing project:

- [Section 2.1, "Setting Up Your Workspace and Project Directories"](#)
- "Managing a Team Development Environment" in the *Oracle Fusion Middleware Production Operations Guide for Oracle WebLogic Portal*
- Tutorial: Getting Started in Workshop for WebLogic
- Importing Existing Web Applications (Oracle Enterprise Pack for Eclipse document)

---

## Creating a Domain and Server

At this point you may not have not written any code, except perhaps a placeholder EJB. Even so the generated projects are valid applications.

The chapter contains:

- [Section 6.1, "Creating a Server"](#)
- [Section 6.2, "Domain Configuration Wizard"](#)
- [Section 6.3, "Related Information"](#)

### 6.1 Creating a Server

To create a server in Oracle Enterprise Pack for Eclipse:

1. From either the Portal or J2EE perspective, click the **Servers view**.
2. Right-click inside the Servers view and select **New > Server**.
3. Complete the pages in the wizard as required.

**Table 6–1** *New Server Wizard*

In this Wizard ...	Select or Enter...
Server's host name	localhost
Server type	Oracle WebLogic Server v10.3
Server runtime	Oracle WebLogic Server 10.3
Domain home	Your domain home directory. For example, HOME/domains/projectX. <b>Tip:</b> As a best practice, create your domain outside of the installation directory. If you do not already have a domain, create one by selecting <b>Click here to launch the Configuration Wizard to create a new domain</b> . For information about what to enter in this wizard, see <a href="#">Section 6.2, "Domain Configuration Wizard."</a>
Add and Remove Projects	Your EAR project should be visible. As a best practice, do not move the EAR to the server yet. This way you can make sure the server starts cleanly by itself. You can add the project later.
Selected Tasks	This page should be empty unless you have added your EAR Project to the server.

After completing the New Server Wizard, the Servers view displays the server you just created along with the server's status and state.

- Status – Refers to the server itself: Stopped (not running), Starting, Started, and so on.

- State – Refers to any projects deployed on the server: Republish (require redeployment) or Synchronized (all is well).

---

**Note:** Eclipse uses the term Publish where Oracle Enterprise Pack for Eclipse uses Deploy; these terms are synonyms.

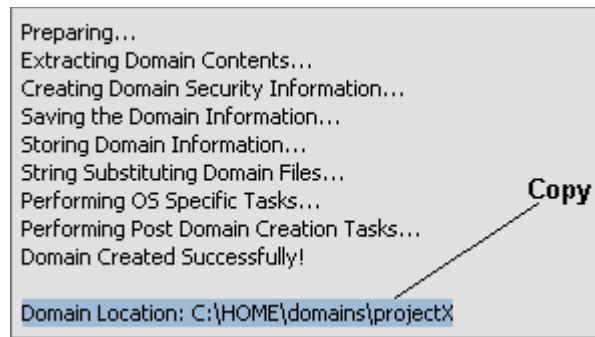
---

## 6.2 Domain Configuration Wizard

If you are creating a new domain, complete the pages in the domain wizard as required.

**Table 6–2 Domain Wizard**

In this Wizard ...	Select or Enter...
Welcome page	Create a new WebLogic domain.
Select Domain Source	In the <b>Generate a domain configured automatically to support the following Oracle Products</b> , select either <b>WebLogic Portal</b> . Be sure you select the template with the features you need.  Notice that a WebLogic Portal Collaboration Repository checkbox is available on this wizard dialog; portal projects that use Collaboration Portlets features must have a domain that includes this repository. For information about Collaboration Portlets, see the <i>Oracle Fusion Middleware Portlet Development Guide for Oracle WebLogic Portal</i> .
Configure Administrator Username and Password	The user name and password of your choice.
Configure Server Start Mode and JDK	Development Mode.  Oracle recommends using JRockit, as it is faster than the Hotspot JVM for iterative development.
Configure JDBC Data Sources	Use the defaults.  <b>Note:</b> When you click <b>Next</b> , the Configuration Wizard attempts to run a series of connection tests against the database. If the database is not running at this point, these tests will always fail. After the tests run, just click <b>Next</b> again. A warning dialog appears asking if you want to bypass testing. You can safely ignore this warning. Click <b>OK</b> to continue.
Run Database Scripts	Click <b>Run Scripts</b> , then click <b>Next</b> .  <b>Note:</b> This step is new as of WebLogic Portal 10.3.2. For past releases, these scripts were run automatically for the default PointBase database. You must click the <b>Run Scripts</b> button before continuing.
Select Optional Configuration	Select an option to configure. The wizard will take you through the appropriate steps.
Configuration Summary	Click <b>Create</b> to create the domain.  <b>Note:</b> For more information on the Domain Configuration Wizard, see <i>Oracle Fusion Middleware Creating Domains Using the Configuration Wizard</i> .  The name entered in the Domain name field becomes a subdirectory under the Domain location directory.  For example, if you want your domain to be <code>HOME/domains/projectX</code> , enter <code>projectX</code> as the domain name, and <code>HOME/domains</code> for the location.  If the path to your domain is long, you can copy the path information from the final and then paste it into the Domain home field in the New Server wizard as shown in <a href="#">Figure 6–1</a> .

**Figure 6–1 Copy Path Information**

## 6.3 Related Information

The following topics provide more detail for creating a domain for your server:

- *Oracle Fusion Middleware Tutorials for Oracle WebLogic Portal* – These tutorials provide instructions on using the various configuration wizards.
- *Oracle Fusion Middleware Creating Domain Templates Using the Domain Template Builder*



---

---

## Running and Debugging an Application

This chapter includes the following topics:

- [Section 7.1, "Starting the Server"](#)
- [Section 7.2, "Deploying or Debugging the Application"](#)
- [Section 4.3, "Related Information"](#)

For information on obtaining debug information from public Oracle WebLogic Portal classes and adding debugging calls to your own code, see "Obtaining Debug Information" in *Oracle Fusion Middleware Portal Development Guide for Oracle WebLogic Portal*.

### 7.1 Starting the Server

The Server view provides two modes for starting the server:

- Run mode – For faster performance, use this mode when you aren't doing any debugging with Oracle Enterprise Pack for Eclipse.
- Debug mode – Use this mode when debugging. If you aren't debugging, it will slow the server slightly.

---

---

**Note:** If you start the server in run mode and later decide to debug, you will have to stop the server, and then restart in Debug mode.

---

---

After starting the server in either mode, the Console view is displayed. The Console view shows the running log output. The Server view shows Starting while the server is launching; the status changes to Started after start up is complete.

**Tip:** You can change the way information is displayed in the Console view by right-clicking within the view and selecting **Preferences**.

As the server is starting, the Server and Console views may switch focus back and forth. To change this behavior, do one of the following:

- Right-click in the Console view and select **Preferences**. Then deselect **Show when program writes to standard out** and/or **Show when program writes to standard error**.
- Drag the Console view to some other place on Oracle Enterprise Pack for Eclipse so it can produce its output without stealing focus from other views.

## 7.2 Deploying or Debugging the Application

To deploy or debug the application:

1. Do one of the following:
  - To deploy, right-click your web application project and select **Run As > Run on Server**.
  - To debug, right-click your web application project and select **Debug As > Debug on Server**.
2. In the Define a New Server dialog box, select your server. (There should be only one.)
3. Select **Set server as project default**. (Your project will always use this server.)
4. Click **Finish**.

The web application will now run on the server. If the project is not built, Oracle Enterprise Pack for Eclipse builds it and then publishes (deploys) it. In the Servers view, the State column displays Publishing. When the application is deployed, a browser opens in Oracle Enterprise Pack for Eclipse and loads the default page for the web application. The default page is `index.jsp`.

**Tip:** Oracle Enterprise Pack for Eclipse uses its internal browser to display web pages. You can switch Oracle Enterprise Pack for Eclipse to use your normal (external) browser by going to the menu bar, and selecting **Window > Web Browser > <Your Browser>**.

You can also choose to always use an external web browser to view your portal. To do so, select **Window > Preferences** and select **General > Web Browser** in the property tree. Next, select the **Use external Web browser** and pick a browser type from the list. If no browsers appear in the list, you can search for available browsers and add them to the list.

Anytime you select **Run on Server** or **Debug on Server** for a resource, such as a `.portal` file, the project is built and redeployed as necessary. Additionally the selected resource opens in the browser. However, the one exception is if you have a page flow controller (JPF file) associated with that folder (package). In this case, the Page Flow runs rather than the individual file you have created. Subsequently, once you have actual content in your web application, you may want to delete the default `controller.java` and `index.jsp` files that were generated when you created the project.

---

---

**Note:** Page flows are a feature of Apache Beehive, which is an optional framework that you can integrate with WLP. See "Apache Beehive and Apache Struts Supported Configurations" in the *Oracle Fusion Middleware Portal Development Guide for Oracle WebLogic Portal*.

---

---

## 7.3 Related Information

The following topics provide more detail for running or debugging your application on the server.

- Oracle WebLogic Server (Oracle Enterprise Pack for Eclipse document)
- Defining the Server Inside the IDE in Oracle WebLogic Server



---

---

# Sharing Configuration Objects

At this point you might need to choose a strategy for sharing the configuration of your domain, database, and other objects with the rest of your development team.

This chapter includes the following topics:

- [Section 8.1, "Strategies for Sharing"](#)
- [Section 8.2, "Related Information"](#)

## 8.1 Strategies for Sharing

You may need to account for these two types of configuration, and how you will identify them or keep them separate in your development environment. The two configuration types are:

- Configuration of the staging or production servers—including desktops, content management data and structures, entitlements, and other configuration objects. It can also include any database schema definitions that are unique to your project.
- Configuration of the development and test servers—including test data and test users, as well as the configurations listed in the previous bullet item.

The main ways to share configuration objects are:

- Manually using a set of instructions.
- Using scripts such as WLST, DDL, Ant, and so on.
- Using JSPs, servlets, and so on
- Propagation—moving the database contents of a portal application from one server environment to another.

Each way has its advantages and drawbacks. Most likely you will use a mixture of these techniques.

## 8.2 Related Information

The following topics provide more detail for sharing configuration objects:

- "Managing a Team Development Environment" in the *Oracle Fusion Middleware Production Operations Guide for Oracle WebLogic Portal*
- "Developing a Propagation Strategy" in the *Oracle Fusion Middleware Production Operations Guide for Oracle WebLogic Portal*



---

---

## Portal Web Application Organization

The following topics will help you organize your portal web application:

- [Section 9.1, "Directory Structure"](#)
- [Section 9.2, "Portal Organization"](#)
- [Section 9.3, "Support Proxy Caching"](#)
- [Section 9.4, "Plan for Upgrading WebLogic Portal"](#)
- [Section 9.5, "Related Information"](#)

### 9.1 Directory Structure

The structure described here is suggested to help keep your portal web application stay organized and easy to navigate as it grows larger. The following list demonstrates a structure for portlets. Use a similar organizational technique for portals, skins, look-and-feel files, and so on.

- Create a top-level folder, under the WebContent folder named portlets.
- Create a folder (or folder structure) for each portlet.
- Put the `.portlet` file, JSPs, and other files associated with the portlet in the portlet folder.

```
WebContent
  /portlets
    /utility
      /weather
        weather.portlet
        weather_summary.jsp
```

- Match the portlet folder structure for any associated utility classes, backing files, and other files in a package. For example, the backing and utility classes might go in something like `org.foo.projectx.portlets.utility.weather` package.

### 9.2 Portal Organization

To organize your portals, create `.book` and `.page` files separately from the `.portal` file rather than inline. Although a simple portal can use an inline structure, keeping these files separate is useful for managing and organizing your portal as it grows.

For more information, see "Creating a Standalone Book or Page" and "Extracting an Existing Page or Book to Re-Use" in the *Oracle Fusion Middleware Portal Development Guide for Oracle WebLogic Portal*.

## 9.3 Support Proxy Caching

Create static content under separate top-level folders. This makes them easier to deploy from a front-end like Apache or a caching/edge proxy. For example, using the sample in [Section 9.1, "Directory Structure"](#):

```
WebContent
  /images
    /weather
  /icons
    /weather
  /content (static content)
    /weather
```

## 9.4 Plan for Upgrading WebLogic Portal

In WebLogic Portal, certain files work together as a logical unit. This means that a change in one file may affect another. During an upgrade or patch, it's possible that a file you changed will not be upgraded, while a file that it depends on may be upgraded. As a best practice, especially when using Oracle Enterprise Pack for Eclipse's **Copy to Project** feature, do one of the following to avoid problems with the way a logical group of files interact with each other:

- Create your own versions of files, with their own names and paths, from the J2EE libraries. Do not override the library modules at all.
- If you do override a file, make sure to override a logical unit of files, rather than overriding individual files within that group.

**Tip:** This suggestion is valid for any set of files you might override, but it is especially important when tweaking skins, skeletons, and layouts. It is best to create your own look-and-feel files, using the original library modules as a starting point, rather than overriding the default look-and-feel files.

For additional information, see *Oracle Smart Update Installing Patches and Maintenance Packs*.

## 9.5 Related Information

The following topics provide more detail for organizing your portal application:

- "User Interface Development with Look And Feel Features" in the *Oracle Fusion Middleware Portal Development Guide for Oracle WebLogic Portal*
- "Using the Merged Projects View" in the *Oracle Fusion Middleware Portal Development Guide for Oracle WebLogic Portal*

---

---

## Developer Productivity

This chapter includes the following tips to increase developer productivity:

- [Section 10.1, "Use the Team Plug-in"](#)
- [Section 10.2, "Use JRockit"](#)
- [Section 10.3, "Run Without Debug when Possible"](#)
- [Section 10.4, "Make Sure You Have Enough Heap"](#)
- [Section 10.5, "Prefer Quicker Redeploys"](#)

### 10.1 Use the Team Plug-in

See [Section 4.1, "Team Plug-ins."](#)

### 10.2 Use JRockit

Based on the test described in the next paragraph with a basic portal application, the JRockit JVM is faster than the Hotspot JVM for iterative development.

Using a scenario that is based on a typical developer's tasks—starting a server, deploying an application, then redeploying the application ten times—JRockit saves several minutes of wait time on a reasonably fast Linux machine. You'll save even more time on a slower computer.

For more information about using JRockit, see:

- [Oracle JRockit Online Documentation at \[http://download.oracle.com/docs/cd/E13150\\\_01/jrockit\\\_jvm/jrockit/webdocs/index.html\]\(http://download.oracle.com/docs/cd/E13150\_01/jrockit\_jvm/jrockit/webdocs/index.html\)](http://download.oracle.com/docs/cd/E13150_01/jrockit_jvm/jrockit/webdocs/index.html)
- [Section 6.1, "Creating a Server"](#)
- [Section 11.2, "JVM"](#)

### 10.3 Run Without Debug when Possible

Running the Debug Server slows down both JRockit and the Sun JVM. In the developer's scenario described in the previous section, running debug add several minutes of wait time.

Obviously, using debugging will save you much more time in productivity when you need it compared to sprinkling your code with `println`s. However, if you are not going to use debug, start the server without it.

For additional information, see:

- [Chapter 7, "Running and Debugging an Application."](#)

## 10.4 Make Sure You Have Enough Heap

As your portal gets larger, you may need to increase the heap (-Xmx) and initial heap sizes (-Xms). It is generally best to make the initial and maximum heap sizes equal.

For more information, see:

- [Profiling and Performance Tuning in the JRockit Diagnostics Guide](http://download.oracle.com/docs/cd/E13150_01/jrockit_jvm/jrockit/geninfo/diagnos/part_02.html) at [http://download.oracle.com/docs/cd/E13150\\_01/jrockit\\_jvm/jrockit/geninfo/diagnos/part\\_02.html](http://download.oracle.com/docs/cd/E13150_01/jrockit_jvm/jrockit/geninfo/diagnos/part_02.html)
- [Tuning the Memory Management System in the JRockit Diagnostics Guide](http://download.oracle.com/docs/cd/E13150_01/jrockit_jvm/jrockit/geninfo/diagnos/memman.html) at [http://download.oracle.com/docs/cd/E13150\\_01/jrockit\\_jvm/jrockit/geninfo/diagnos/memman.html](http://download.oracle.com/docs/cd/E13150_01/jrockit_jvm/jrockit/geninfo/diagnos/memman.html)

## 10.5 Prefer Quicker Redeploys

Because of the size of a portal EAR, redeployment of a portal application can be slow—several minutes, depending on the machine. However, you can organize your work to spend less time waiting and avoid slow redeployment in the following ways:

- [Section 10.5.1, "Some Resources Do Not Need to Redeploy"](#)
- [Section 10.5.2, "Web Applications Redeploy Faster than their Enclosing EARs"](#)
- [Section 10.5.3, "EJB Projects in a Sub-classloader Deploy Faster"](#)

### 10.5.1 Some Resources Do Not Need to Redeploy

JSPs, `.portal` files, and similar objects do not need to redeploy. For example, if you change a JSP and then republish in Oracle Enterprise Pack for Eclipse, basically nothing happens. Use coding in a JSP for light investigation or testing.

For information about using Oracle Enterprise Pack for Eclipse for JSP development, see Oracle Workshop for WebLogic for JSP (Oracle Enterprise Pack for Eclipse document).

### 10.5.2 Web Applications Redeploy Faster than their Enclosing EARs

The redeployment of a web application, including a portal web application, is significantly faster than deploying the entire EAR.

If your only change a web application, Oracle Enterprise Pack for Eclipse republishes only that web application. Therefore, it is faster to code in a web application as classes in the web project's `Java Resources/src` folder. They deploy in the web application's `WEB-INF/classes`, and Oracle Enterprise Pack for Eclipse directs the server redeploy only the WAR (unless you change something that requires the application to redeploy).

For additional information, see Streamlining Deployment/Testing (Oracle Enterprise Pack for Eclipse document).

### 10.5.3 EJB Projects in a Sub-classloader Deploy Faster

Because the majority of application redeployment time is spent processing resources like portal EJBs, you can save time by avoiding redeployment of these resources. For instance, if you have code that is application-scoped, such as EJBs, you may be able to

deploy the code in a submodule. However, use of this method is limited, due to the ClassLoader arrangement that it requires. This technique will not work if the application calls code in the EJB project, such as implementing a content management SPI or registering P13n EventListeners and UUP.

To make an EJB project a submodule of the EAR, add a classloader-structure stanza to your EAR's `weblogic-application.xml` file. This allows the EJB and WAR projects to redeploy without redeploying the EAR.

To add a classloader-structure stanza to your EAR's `weblogic-application.xml` file:

1. Create an EJB project, as discussed in [Section 3.6, "EJB Projects,"](#) and associate that EJB project with your application project.
2. In the Projects view, open the WebLogic Deployment Descriptor for the EAR, and select the Source view.
3. Add a stanza like this, changing the `module-uri` names to those of your project:

```
<wls:classifier-structure>
  <wls:classifier-structure>
    <wls:module-ref>
      <wls:module-uri>projectXejb.jar</wls:module-uri>
    </wls:module-ref>
    <wls:classifier-structure>
      <wls:module-ref>
        <wls:module-uri>projectX.war</wls:module-uri>
      </wls:module-ref>
    </wls:classifier-structure>
  </wls:classifier-structure>
</wls:classifier-structure>
```

Because this stanza makes your EJB project (`projectXejb`) a submodule of the EAR, it allows WebLogic Server to redeploy the EJB JAR without requiring the entire EAR to redeploy. Notice that the WAR project (`projectX`) is made a child of the EJB, which allows the code in the WAR to access the code in the EJB project.

For more information, see:

- Tutorial: Building Enterprise JavaBeans (Oracle Enterprise Pack for Eclipse document)
- "Understanding WebLogic Server Application Classloading" in *Oracle Fusion Middleware Developing Applications for Oracle WebLogic Server*.





---

## Server Memory and Other Settings

This chapter includes the following topics:

- [Section 11.1, "Start-up Scripts"](#)
- [Section 11.2, "JVM"](#)
- [Section 11.3, "Memory Settings"](#)
- [Section 11.4, "Class path"](#)
- [Section 11.5, "Other Java Options"](#)
- [Section 11.6, "PointBase"](#)
- [Section 11.7, "Autonomy"](#)
- [Section 11.8, "Using the nodebug Argument"](#)
- [Section 11.9, "More Complex Settings"](#)

### 11.1 Start-up Scripts

Settings for your server should go in the command line or start-up scripts. To localize the default overrides and make it easier to share the changes with your team, add them to the startWebLogic scripts:

- `DOMAIN_HOME/startWebLogic.cmd` (Windows)
- `DOMAIN_HOME/startWebLogic.sh` (UNIX)

To edit the startWebLogic script in Oracle Enterprise Pack for Eclipse:

1. In the Server view, double-click the server.
2. In the Server Overview view, click **Edit** to the right of the **Startup script** entry.
3. Edit the script as necessary. [Figure 11–1](#) shows an example for both Windows and Linux.

Common environment variables you might want to set are:

- [Section 11.2, "JVM"](#)
- [Section 11.3, "Memory Settings"](#)
- [Section 11.4, "Class path"](#)
- [Section 11.5, "Other Java Options"](#)
- [Section 11.6, "PointBase"](#)
- [Section 11.7, "Autonomy"](#)

- [Section 11.8, "Using the nodebug Argument"](#)
- [Section 11.9, "More Complex Settings"](#)

**Figure 11–1 Example Start WebLogic Scripts**

```

startWebLogic.sh
#!/bin/sh
DOMAIN_HOME="/HOME/domains/projectX"

# Use JRockit
export JAVA_VENDOR="BEA"

# Set initial and max heap to 1G
export USER_MEM_ARGS="-Xms1g -Xmx1g"

# Turn off autonomy
export CONTENT_SEARCH_OPTION="none"

# Add my system property
export JAVA_OPTIONS="-DmySystemProperty=foo"

${DOMAIN_HOME}/bin/startWebLogic.sh $*

```

```

*workshop.startWebLogic.cmd
@ECHO OFF
SETLOCAL
set DOMAIN_HOME="C:\domains\projectX"

REM Use JRockit
set JAVA_VENDOR="BEA"

REM Set initial and max heap to 1G
set USER_MEM_ARGS="-Xms1g -Xmx1g"

REM Turn off autonomy
set CONTENT_SEARCH_OPTION="none"

REM Add my system property
set JAVA_OPTIONS="-DmySystemProperty=foo"

call "%DOMAIN_HOME%\bin\startWebLogic.cmd" %*
ENDLOCAL

```

## 11.2 JVM

When creating a domain in the Domain Configuration Wizard, you set the default JVM, as described in [Chapter 6](#). If you need to change or override the default JVM, in the startWebLogic script, set `JAVA_VENDOR` to either BEA for JRockit, or Sun for Hotspot. This triggers the domain to use the specified JVM as supplied by the WebLogic Portal installer and any JVM-specific settings for memory and other options.

## 11.3 Memory Settings

The default memory settings for WebLogic Portal are:

JVM Type	Default Settings
JRockit	-Xms256m -Xmx768m
Sun Hotspot	-Xms256m -Xmx768m -XX:CompileThreshold=8000 -XX:PermSize=48m -XX:MaxPermSize=128m

To override these, set `USER_MEM_ARGS` in the startWebLogic script. This is useful for gaining more heap or PermSize.

In general, JRockit requires more heap than the same server run on Hotspot. This is probably because Hotspot separates some objects out into Permanent Generation, while JRockit uses heap for these objects.

Servers running either JVM startup and perform initial application deploys faster if you provide enough initial memory (Xms and PermSize) so that server startup does not require extra allocations and the associated garbage collection passes. Generally, set the initial and maximum sizes the same.

For more information, see Tuning the Memory Management System in the JRockit Diagnostics Guide at [http://download.oracle.com/docs/cd/E13188\\_01/jrockit/geninfo/diagnos/memman.html](http://download.oracle.com/docs/cd/E13188_01/jrockit/geninfo/diagnos/memman.html).

## 11.4 Class path

The two ways to deploy into the Java class path are:

- Copy JARs into your domain's `DOMAIN_HOME/lib` directory. They are automatically picked up by the server; no other configuration is needed.
- Set the Java class path in the `startWebLogic` script, use these environment variables:
  - `EXT_PRE_CLASSPATH` – adds to the beginning the server's class path.
  - `EXT_POST_CLASSPATH` – adds to the end of the server's class path.

## 11.5 Other Java Options

You can set other Java options in the `startWebLogic` script using the `JAVA_OPTIONS` setting. This setting is additive; it does not override anything else. This is a good place to put things like system properties.

## 11.6 PointBase

The startup of the PointBase database server is controlled in the `startWebLogic` script by the command line argument `nopointbase`. There is not an environment variable to control this setting.

To start the server without PointBase, run the command:

```
startWebLogic nopointbase
```

To permanently set `nopointbase` for a domain, add this argument to where `DOMAIN_HOME/startWebLogic.sh` or `DOMAIN_HOME/startWebLogic.cmd` calls the `DOMAIN_HOME/bin/startWebLogic` script.

This is useful when you are using an external database, such as Oracle or SQL Server.

For information about using databases, see the *Oracle Fusion Middleware Database Administration Guide for Oracle WebLogic Portal*.

## 11.7 Autonomy

If you have Autonomy installed in your environment, the startup of Autonomy is controlled by the `CONTENT_SEARCH_OPTION` in the `startWebLogic` script. To turn off Autonomy startup, set this option to `none`. Use this option when you do not need to run Autonomy or when it is already running as an external daemon.

For information about using Autonomy, see *Oracle Fusion Middleware Autonomy Search Integration Sample Guide for Oracle WebLogic Portal*.

## 11.8 Using the nodebug Argument

For production mode servers, the default is `nodebug`. However, for development environments, although the `startWebLogic` script accepts a `nodebug` command line argument, it is not advisable to try to override this setting with your scripts because it confuses Oracle Enterprise Pack for Eclipse. Instead use the **Server** or **Debug** buttons in the Server view.

If you are not using Oracle Enterprise Pack for Eclipse, you can use the `nodebug` argument. The debug mode sets the following arguments in the JVM:

```
-Xdebug -Xnoagent  
-Xrunjdw:transport=dt_socket,address=8453,server=y,suspend=n  
-Djava.compiler=NONE
```

## 11.9 More Complex Settings

If you have complex requirements, such as starting external processes or significant changes to server settings, you should create your own domain template to capture and replay these changes. A domain template facilitates sharing complex domain configurations with the rest of your team. For information about creating your own domain templates, see:

- *Oracle Fusion Middleware Creating Domain Templates Using the Domain Template Builder*
- *Oracle Fusion Middleware Creating Domains Using the Configuration Wizard*

---

---

## Application Location

Oracle Enterprise Pack for Eclipse deploys your application to the server as a split-source application.

This chapter includes the following topics:

- [Section 12.1, "Split-source Directories"](#)
- [Section 12.2, "Related Information"](#)

### 12.1 Split-source Directories

The deployed application is an exploded directory inside your Workspace. This directory only contains copies of the files from META-INF directory in your application and a `.beabuild.txt` file, which lays out mappings for the actual application content.

The deployed split-source application is located in:

```
WORKSPACE/.metadata/.plugins/org.eclipse.core.resources/.projects/ APP_
NAME/beadep/DOMAIN_NAME/APP_NAME
```

where WORKSPACE is your Eclipse workspace directory, APP\_NAME is the name of your EAR project, and DOMAIN\_NAME is the server domain name.

[Figure 12-1](#) is an example of a `.beabuild.txt` file.

**Example 12-1 .beabuild.txt file**

```
/home/projectX/projectX/build/weboutput = projectX.war
/home/projectX/projectXapp/EarContent/APP-INF/classes = APP-INF/classes
/home/projectX/projectX/WebContent = projectX.war
/home/projectX/projectX/build/classes = projectX.war/WEB-INF/classes
/home/projectX/projectXejb/build/classes = projectXejb.jar
/home/projectXutility/build/classes = APP-INF/lib/projectXutility.jar
/home/projectX/projectXdatasync/src = META-INF/data
```

The `.beabuild.txt` file pulls in the actual directory locations (on the left of the equals sign) to their virtual locations within the application (on the right of the equals sign). The deployed application picks up the actual files from your project's Oracle Enterprise Pack for Eclipse build output, WebContent directories, and so forth. This means that if you change JSPs, HTML files, or other files in your application, the server sees it immediately.

### 12.2 Related Information

The following topics provide more detail about split-source applications:

- [Managing Folder Mappings \(Oracle Enterprise Pack for Eclipse document\)](#)
- ["Creating a Split Development Directory Environment" in \*Oracle Fusion Middleware Developing Applications for Oracle WebLogic Server\*.](#)