

Oracle® Fusion Middleware

Release Notes for Oracle WebLogic Portal

10g Release 3 (10.3.2)

E14247-03

February 2010

Oracle Fusion Middleware Release Notes for Oracle WebLogic Portal, 10g Release 3 (10.3.2)

E14247-03

Copyright © 2010, Oracle and/or its affiliates. All rights reserved.

This software and related documentation are provided under a license agreement containing restrictions on use and disclosure and are protected by intellectual property laws. Except as expressly permitted in your license agreement or allowed by law, you may not use, copy, reproduce, translate, broadcast, modify, license, transmit, distribute, exhibit, perform, publish, or display any part, in any form, or by any means. Reverse engineering, disassembly, or decompilation of this software, unless required by law for interoperability, is prohibited.

The information contained herein is subject to change without notice and is not warranted to be error-free. If you find any errors, please report them to us in writing.

If this software or related documentation is delivered to the U.S. Government or anyone licensing it on behalf of the U.S. Government, the following notice is applicable:

U.S. GOVERNMENT RIGHTS Programs, software, databases, and related documentation and technical data delivered to U.S. Government customers are "commercial computer software" or "commercial technical data" pursuant to the applicable Federal Acquisition Regulation and agency-specific supplemental regulations. As such, the use, duplication, disclosure, modification, and adaptation shall be subject to the restrictions and license terms set forth in the applicable Government contract, and, to the extent applicable by the terms of the Government contract, the additional rights set forth in FAR 52.227-19, Commercial Computer Software License (December 2007). Oracle USA, Inc., 500 Oracle Parkway, Redwood City, CA 94065.

This software is developed for general use in a variety of information management applications. It is not developed or intended for use in any inherently dangerous applications, including applications which may create a risk of personal injury. If you use this software in dangerous applications, then you shall be responsible to take all appropriate fail-safe, backup, redundancy, and other measures to ensure the safe use of this software. Oracle Corporation and its affiliates disclaim any liability for any damages caused by use of this software in dangerous applications.

Oracle is a registered trademark of Oracle Corporation and/or its affiliates. Other names may be trademarks of their respective owners.

This software and documentation may provide access to or information on content, products, and services from third parties. Oracle Corporation and its affiliates are not responsible for and expressly disclaim all warranties of any kind with respect to third-party content, products, and services. Oracle Corporation and its affiliates will not be responsible for any loss, costs, or damages incurred due to your access to or use of third-party content, products, or services.

Contents

Preface	vii
Documentation Accessibility	vii
Related Documents	vii
Conventions	viii
1 Oracle WebLogic Portal Release Notes	
1.1 What's New in Oracle WebLogic Portal 10.3.2	1-1
1.2 Installing the Portal Examples	1-2
1.3 Required Patches	1-2
1.4 Supported Platform Information	1-2
1.5 Supported Standards	1-3
1.6 Known Limitations and Workarounds in WebLogic Portal	1-3
1.6.1 Installation	1-3
1.6.2 WebLogic Portal and Oracle Enterprise Pack for Eclipse Upgrade	1-4
1.6.3 Oracle Enterprise Pack for Eclipse Framework and Development	1-9
1.6.4 WebLogic Portal Framework and Development	1-10
1.6.4.1 Workaround for 9105747	1-20
1.6.5 Content Management and Search	1-22
1.6.6 Federation	1-28
1.6.7 Collaboration	1-29
1.6.8 Production Operations	1-29
1.6.9 WebLogic Portal Administration Console	1-31
1.7 Known WebLogic Server and Platform Limitations	1-33
1.8 Key Limitations Fixed in WebLogic Portal	1-34

List of Tables

1-1	Required Patches for WLP 10.3.2.....	1-2
1-2	Java Standards.....	1-3
1-3	Known Limitations and Workarounds for Installation.....	1-4
1-4	Known Limitations and Workarounds for WebLogic Portal and Oracle Enterprise Pack for Eclipse Upgrade.....	1-5
1-5	Known Limitations and Workarounds for Oracle Enterprise Pack for Eclipse Framework and Development.....	1-9
1-6	Known Limitations and Workarounds for WebLogic Portal Framework and Development	1-11
1-7	Known Limitations and Workarounds for Content Management and Search.....	1-23
1-8	Known Limitations and Workarounds for Federation.....	1-28
1-9	Known Limitations and Workarounds for Collaboration	1-29
1-10	Known Limitations and Workarounds for Production Operations	1-30
1-11	Known Limitations and Workarounds for WebLogic Portal Administration Console	1-32
1-12	Known WLS and Platform Limitations	1-34
1-13	Key Limitations in WebLogic Portal	1-34

Documentation Accessibility

Our goal is to make Oracle products, services, and supporting documentation accessible to all users, including users that are disabled. To that end, our documentation includes features that make information available to users of assistive technology. This documentation is available in HTML format, and contains markup to facilitate access by the disabled community. Accessibility standards will continue to evolve over time, and Oracle is actively engaged with other market-leading technology vendors to address technical obstacles so that our documentation can be accessible to all of our customers. For more information, visit the Oracle Accessibility Program Web site at <http://www.oracle.com/accessibility/>.

Accessibility of Code Examples in Documentation

Screen readers may not always correctly read the code examples in this document. The conventions for writing code require that closing braces should appear on an otherwise empty line; however, some screen readers may not always read a line of text that consists solely of a bracket or brace.

Accessibility of Links to External Web Sites in Documentation

This documentation may contain links to Web sites of other companies or organizations that Oracle does not own or control. Oracle neither evaluates nor makes any representations regarding the accessibility of these Web sites.

Access to Oracle Support

Oracle customers have access to electronic support through My Oracle Support. For information, visit <http://www.oracle.com/support/contact.html> or visit <http://www.oracle.com/accessibility/support.html> if you are hearing impaired.

Related Documents

For more information, see the following documents in the Oracle Other Product One Release 7.0 documentation set or in the Oracle Other Product Two Release 6.1 documentation set:

- *Oracle Other Product One Release Notes*
- *Oracle Other Product One Configuration Guide*

- *Oracle Other Product Two Getting Started Guide*
- *Oracle Other Product Two Reference Guide*
- *Oracle Other Product Two Tuning and Performance Guide*

Conventions

The following text conventions are used in this document:

Convention	Meaning
boldface	Boldface type indicates graphical user interface elements associated with an action, or terms defined in text or the glossary.
<i>italic</i>	Italic type indicates book titles, emphasis, or placeholder variables for which you supply particular values.
<code>monospace</code>	Monospace type indicates commands within a paragraph, URLs, code in examples, text that appears on the screen, or text that you enter.

Oracle WebLogic Portal Release Notes

This document contains information on the following subjects:

- [Section 1.1, "What's New in Oracle WebLogic Portal 10.3.2"](#)
- [Section 1.2, "Installing the Portal Examples"](#)
- [Section 1.3, "Required Patches"](#)
- [Section 1.4, "Supported Platform Information"](#)
- [Section 1.5, "Supported Standards"](#)
- [Section 1.6, "Known Limitations and Workarounds in WebLogic Portal"](#)
- [Section 1.7, "Known WebLogic Server and Platform Limitations"](#)
- [Section 1.8, "Key Limitations Fixed in WebLogic Portal"](#)

1.1 What's New in Oracle WebLogic Portal 10.3.2

Oracle WebLogic Portal 10.3.2 provides tools to build enterprise portal applications.

This release includes:

- Dynamic Visitor Tools
- Dynamic Visitor Tools extensibility
- REST API for unified user profiles
- REST support for content management with CMIS
- Oracle Enterprise Pack for Eclipse based IDE
- WSRP 2.0 compliance and IDE support
- JSR 286 compliance and IDE support
- JSR 329 portlet bridge for JSF portlets
- Import/Export of Java portlets
- WSRP interoperability with Oracle WebCenter
- Content integration with the UCM VCR Adapter
- Direct upgrade from WLP 8.1 SP5

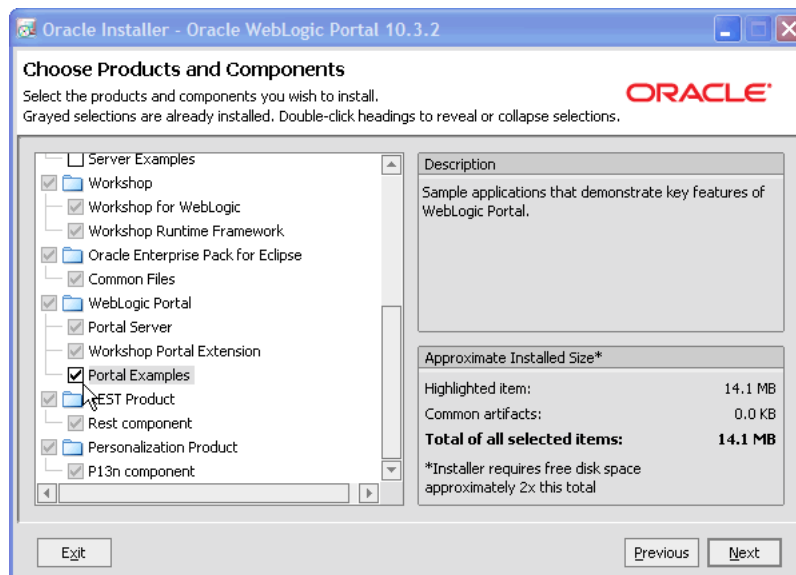
1.2 Installing the Portal Examples

Before you can use any WLP example application, the Portal Examples feature must be installed. This feature adds the available WLP sample applications and the sample domain to your installation. Portal Examples are not installed by default.

Install the Portal Examples using the Oracle Installer for WebLogic Portal 10.3.2. You can install the examples into a new installation or into an existing installation by following these steps:

1. Run the Oracle Installer for WebLogic Portal 10.3.2.
2. In the Choose Products and Components part of the wizard, select **WebLogic Portal > Portal Examples**, as shown in [Figure 1–1](#). Note that the wizard automatically detects components that are already installed and grays them out.
3. Use the wizard to complete the installation.

Figure 1–1 *Installing the Examples*



1.3 Required Patches

When you install Oracle WebLogic Portal 10.3.2, the required patches in [Table 1–1](#) are installed automatically. If you uninstall any of these required patches and need to reinstall them, use the information in [Table 1–1](#) in conjunction with the Smart Update utility to reinstall and apply the patches. For detailed information on using Smart Update, see *Oracle Smart Update Installing Patches and Maintenance Packs*.

Table 1–1 *Required Patches for WLP 10.3.2*

Patch ID	Passcode
ZG44	IX8N36SJ

1.4 Supported Platform Information

For information about Oracle-supported hardware and software configurations, see "Oracle Fusion Middleware Supported System Configurations."

1.5 Supported Standards

This release of WebLogic Portal supports the standards listed in [Table 1–2](#).

Table 1–2 Java Standards

Standard	Version
JSF - Sun Reference Implementation	1.1, 1.2
Struts	1.1, 1.2, 1.3
Beehive	1.0.2 Note: Beehive requires either Struts 1.1 or 1.2. Beehive is not supported with Struts 1.3. See "Apache Beehive and Apache Struts Supported Configurations" in the <i>Oracle Fusion Middleware Portal Development Guide for Oracle WebLogic Portal</i> .
JSR 170 and JSR 170-compliant repositories	1.0 Level 1 and Level 2 (excluding optional features)
JSP	2.1 (with Servlet 2.5, the default for new projects) 2.0 (with Servlet 2.4)
JSTL	1.1, 1.2
Java Portlets	JSR 168 and JSR 286
WSRP	1.0 and 2.0
JAX-RS	1.1 (JSR 311)
Servlet	2.4 and 2.5

1.6 Known Limitations and Workarounds in WebLogic Portal

This section describes problems that have been identified in WebLogic Portal. For each problem listed in the following tables, a problem ID called a CR number is specified. These IDs enable Oracle and users to monitor the status of issues while solutions are developed. This section groups the known limitations by functional area.

For more information, see the following sections:

- [Section 1.6.1, "Installation"](#)
- [Section 1.6.2, "WebLogic Portal and Oracle Enterprise Pack for Eclipse Upgrade"](#)
- [Section 1.6.3, "Oracle Enterprise Pack for Eclipse Framework and Development"](#)
- [Section 1.6.4, "WebLogic Portal Framework and Development"](#)
- [Section 1.6.5, "Content Management and Search"](#)
- [Section 1.6.6, "Federation"](#)
- [Section 1.6.7, "Collaboration"](#)
- [Section 1.6.8, "Production Operations"](#)
- [Section 1.6.9, "WebLogic Portal Administration Console"](#)

1.6.1 Installation

[Table 1–3](#) lists known limitations and workarounds for installing WebLogic Portal.

Table 1–3 Known Limitations and Workarounds for Installation

Problem ID	Description
CR357639	<p>Uninstalling Weblogic Portal within a domain that includes WebLogic Integration results in removal of domain dependent files.</p> <p>The uninstall process removes portal-based p13n files that WebLogic Integration domain provisioning requires.</p> <p>Platform: All</p> <p>Workaround: Do not uninstall Weblogic Portal.</p>
CR376380	<p>A harmless warning is thrown by Message Driven Beans once during deployment in the WebLogic Portal Sample Application.</p> <p>The Message Driven Beans throw the following warnings when the deployer can't obtain distribute destination information:</p> <p>Message-DrivenEJB: MessageBufferTopicBean is unable to connect to the JMS destination: weblogic.portalApp.WlwRuntimeAppScopedJMS#MSG_BUFFER_TOPIC. The Error was:Can not get distribute destination information. The destination JNDI name is weblogic.portalApp.WlwRuntimeAppScopedJMS#MSG_BUFFER_TOPIC, the provider URL is null</p> <p>This warning is thrown only once and can be safely ignored.</p> <p>Platform: All</p> <p>Workaround: None</p>
8070246	<p>JACC error.</p> <p>A JACC error occurred on zLinux and AIX platforms.</p> <p>Platform: zLinux and AIX</p> <p>Workaround: Install this WebLogic Server patch: 1MIS. Contact Oracle Support for more information.</p>
9077232	<p>JSSE error.</p> <p>A JSSE error occurred on zLinux and AIX platforms.</p> <p>Platform: zLinux and AIX</p> <p>Workaround: Install this WebLogic Server patch: 8RLQ. Contact Oracle Support for more information.</p>

1.6.2 WebLogic Portal and Oracle Enterprise Pack for Eclipse Upgrade

Table 1–4 lists known limitations and workarounds for upgrading WebLogic Portal and Oracle Enterprise Pack for Eclipse.

Table 1–4 Known Limitations and Workarounds for WebLogic Portal and Oracle Enterprise Pack for Eclipse Upgrade

Problem ID	Description
CR375743	<p>The location of WLP upgrade wizard.</p> <p>The location of WLP upgrade wizard has changed. The script <code>upgrade.sh/.cmd</code> is located at <code>WLPORTAL_HOME/common/bin</code> instead of <code>WEBLOGIC_HOME/common/bin</code>.</p> <p>Note that the upgrade wizard link from the Windows Start Menu, Oracle Products > WebLogic Server 10.x > Tools > Domain Upgrade Wizard does not start the WLP Upgrade Wizard. It points <code>WEBLOGIC_HOME\common\bin</code> and starts the WLS Domain Upgrade Wizard. To use the WebLogic Portal upgrade wizard, locate <code>WLPORTAL_HOME\common\bin\upgrade.cmd</code> and double click on it.</p> <p>Platform: All platforms</p> <p>Workaround: <code>cd</code> to <code>WLPORTAL_HOME/common/bin</code> and execute the <code>upgrade.cmd/.sh</code> script.</p>
CR377833	<p>Possible build errors after upgrading a web project that depends on an EJB project.</p> <p>After upgrading some web project which depend on classes from an EJB project in an EAR, the EJB classes will show as unresolvable in the web project in the Problems view.</p> <p>Platform: All</p> <p>Workaround:</p> <ol style="list-style-type: none"> 1. Open the web project properties and go to J2EE Module Dependencies. 2. Go to the Web Libraries tab. 3. Check the EJB project(s) and click OK. <p>That triggers a rebuild and the classes should be found.</p>
CR275922	<p>Changes to public XmlDisassemblerContext methods.</p> <p>The class <code>com.bea.netuix.application.transform.disassembler.XmlDisassemblerContext</code> had several methods that used methods from JDOM version 0.9. This version of JDOM turned out to be incompatible with new releases of JDOM. The 0.9 version of JDOM was repacked into <code>com.bea.p13n.org.jdom.*</code> classes, and the methods in <code>XmlDisassemblerContext</code> have been updated accordingly. Users of these methods will have to change their code.</p> <p>Platform: All</p> <p>Workaround: Replace all references to methods of <code>XmlDisassemblerContext</code> that use <code>org.jdom.*</code> with <code>com.bea.p13n.org.jdom.*</code>.</p>
CR341128	<p>Potential java.io.InvalidClassException when upgrading an application from JDK 1.5.0_06 or prior to JDK 1.5.0_07.</p> <p>If you upgrade an application originally built with JDK 1.5.0_06 or earlier to WebLogic Portal 10.2, you may see an exception similar to the following when starting the server:</p> <pre>java.io.InvalidClassException: javax.xml.namespace.QName; local class incompatible: stream classdesc serialVersionUID=4418622981026545151, local class serialVersionUID=-9120448754896609940</pre> <p>The problem is actually with the 1.5.0_07 version (and later) of the JDK, in which there is an incompatible change of the <code>serialVersionUID</code> of the <code>javax.xml.namespace.QName</code> class.</p> <p>Platform: All</p> <p>Workaround: Set the old compatibility value by setting the system property:</p> <pre>com.sun.xml.namespace.QName.useCompatibleSerialVersionUID = 1.0</pre> <p>Or you can add the following option to the Java command in the script you use to start WebLogic Server:</p> <pre>- Dcom.sun.xml.namespace.QName.useCompatibleSerialVersionUID = 1.0</pre>

Table 1–4 (Cont.) Known Limitations and Workarounds for WebLogic Portal and Oracle Enterprise Pack for Eclipse Upgrade

Problem ID	Description
CR361207	<p>After upgrading a 9.2.2 domain, the Portal Administration Tools' Portal Management page and Content Management page may display an Unable to Render error.</p> <p>After upgrading a 9.2.2 domain, accessing the Portal Administration Tools' Portal Management page or Content Management page may result in a browser error, such as "Unable to render /framework/skeletons/wlp-tools/tree_header.jsp." Additionally, the server log contains a <code>java.lang.NoClassDefFoundError: javelin/jsp/JspContextWrapper</code> error. These errors occur when the these pages have been first accessed in a 9.2.2 domain, and then accessed again in the upgraded 10.2 domain.</p> <p>Platform: All</p> <p>Workaround: Search for and delete the <code>jsp_servlet</code> directory under the <code><DOMAIN_HOME>\servers\MyServer\tmp_WL_user\MyApp</code> directory, where <code>MyServer</code> is the name of your server and <code>MyApp</code> is the name of the affected application.</p>
CR362719	<p>An SQLException may occur when migrating RDBMSAuthenticator data if the data contains WebLogic Portal system user or group names during domain upgrade.</p> <p>When a domain with an RDBMSAuthenticator is upgraded to 10.2 and its data is migrated to SQLAuthenticator during the upgrade, an SQLException may occur if certain WebLogic Portal system user or group names exist in the RDBMSAuthenticator. Specifically, if the RDBMSAuthenticator has the users "weblogic" or "portaladmin", or has the groups "Administrators", "AppTesters", "Deployers", "Monitors", "Operators", or "PortalSystemAdministrators", an SQLException similar to the following will occur:</p> <pre>SQLException when executing file:/C:/<WL_HOME>/common/p13n/db/<DATABASE>/upgrade_fromdbmsauth_towlssqlauth.sql</pre> <p>Platform: All</p> <p>Workaround: To avoid this error, edit the file <code><MW_HOME>/wlserver_10.0/common/p13n/db\data/required/p13n9_insert_system_data.sql</code> prior to running the domain upgrader. Remove from this file any INSERTs that correspond to users, groups, or group memberships that already exist in the RDBMSAuthenticator. For example, if the user "weblogic" exists in the RDBMSAuthenticator, remove the "INSERT INTO USERS" statement that applies to "weblogic".</p>
CR363547	<p>Confusing informational message about running SQLAuthenticator.sql displayed when domain is created with "Customize Environment and Services Settings" set to Yes.</p> <p>The following error message is displayed by the Configuration Wizard after domain creation:</p> <p>Before booting this domain, it is necessary to run the SQL file located at <code><DOMAIN_DIR>\security\SQLAuthenticator.sql</code> in order to initialize a domain security admin user in the database.?</p> <p>If Run Scripts were not selected on the Run Database Scripts panel, the database objects needed to execute <code>SQLAuthenticator.sql</code> and other components will not exist in the database.</p> <p>Platform: All</p> <p>Workaround: Create a new domain and execute Run Scripts from the Run Database Scripts panel.</p>

Table 1–4 (Cont.) Known Limitations and Workarounds for WebLogic Portal and Oracle Enterprise Pack for Eclipse Upgrade

Problem ID	Description
CR378049	<p>Deployment of an 8.1.6 application that has been upgraded to 10.3 may fail due to NoClassDefFoundErrors.</p> <p>Deployment of an 8.1.6 application that has been upgraded to 10.3 may fail due to NoClassDefFoundErrors if the application was imported and upgraded in the default workspace or a workspace that had contained previously imported applications that have been deleted.</p> <p>Platform: Windows 2003</p> <p>Workaround: Import and upgrade all 8.1.6 applications to 10.3 using a new custom workspace that is clean.</p>
CR378461	<p>Shared library build errors after upgrading 8.1.x application.</p> <p>After upgrading, numerous build errors will display in the Problems view about issues with share libraries, such as:</p> <p>'beehive-controls-1.0.1-10.0' library is on the class path of this project but is not in the weblogic-application.xml file of the EAR project</p> <p>Platform: Linux</p> <p>Workaround: In the EAR project, make a minor change to the EarContent/META-INF/weblogic-application.xml file (e.g. add a space or empty line) and save the file. After a build, the build error should go away.</p>
CR376710	<p>Build and runtime error with page flow strutsMerge annotation after upgrading and application on Linux.</p> <p>In an upgraded web application that uses the strutsMerge functionality in a Page Flow, a build error appears in the Problems view similar to:</p> <p>File 'struts-config-merge.xml' could not be found in the web application.</p> <p>If the projects are published to a server even with the error, a org.apache.beehive.netui.pageflow.UnresolvableForwardException from the Page Flow will occur at runtime.</p> <p>Platform: Linux</p> <p>Workaround: Create new projects in Oracle Enterprise Pack for Eclipse and import the source artifacts.</p>
9224906	<p>Domain Configuration Wizard fails DB connection tests for Pointbase</p> <p>The Domain Configuration Wizard will fail the database connection tests when the datasources are configured to use Pointbase.</p> <p>Platform: All</p> <p>Workaround: The test failures occur when the Pointbase database that is configured for the datasources is not currently running (which is the default state for Pointbase configurations). This can be avoided by manually starting the Pointbase database prior to executing the connection tests. Otherwise, these failures can be ignored.</p>
9047696	<p>Domain Configuration Wizard Misleading Popup Message</p> <p>A confusing and misleading popup message is displayed from the domain configuration wizards after a new WLP domain is created. This occurs when the datasources are configured to use Pointbase (the default configuration), and the "Run Scripts" button in the "Run Database Scripts" step of the wizard is not clicked during the creation process.</p> <p>Platform: All</p> <p>Workaround: Click "Run Scripts" button in the "Run Database Scripts" step of the wizard. This will ensure that the misleading message will not be displayed.</p>

Table 1–4 (Cont.) Known Limitations and Workarounds for WebLogic Portal and Oracle Enterprise Pack for Eclipse Upgrade

Problem ID	Description
9183700	<p>NameNotFoundException thrown when using EJB control with EJB Link in Pageflow application</p> <p>There is currently a problem experienced while executing a web application pageflow containing an EJB control that was defined using the EJB Link reference to the associated EJB instead of using the explicit JNDI name of the EJB. This can occur for new web applications as well as upgraded applications. The following exception will be thrown when executing the pageflow containing the EJB control:</p> <pre data-bbox="407 506 1252 554">javax.naming.NameNotFoundException: While trying to lookup 'pathName.controlName.jcx' ...</pre> <p>Platform: Windows, Linux</p> <p>Workaround: To resolve the problem, manually edit the web application project's WEB-INF/web.xml file and add the following <code><ejb-ref></code> element template for each EJB link used by an EJB Control within the web application:</p> <pre data-bbox="407 705 1367 1134"><ejb-ref> <!-- substitute your dotted Web project relative path and EJB Control name --> <ejb-ref-name>somePath.someEJBControl.jcx</ejb-ref-name> <!-- EJB type can be Session or Entity as appropriate--> <ejb-ref-type>Session</ejb-ref-type> <!-- substitute your dotted EJB project relative path and EJB Home Interface name --> <home>somePath.someEJBHome</home> <!-- substitute your dotted EJB project relative path and EJB Remote interface name --> <remote>somePath.someEJBRemote</remote> <!-- substitute your EJB jar name and EJB name in link --> <ejb-link>someEjbJarName.jar#someEJBName</ejb-link> </ejb-ref></pre>
	<p>For example:</p> <pre data-bbox="483 1251 1105 1650"><ejb-ref> <ejb-ref-name>controls.Hello.jcx</ejb-ref-name> <ejb-ref-type>Session</ejb-ref-type> <home>session.HelloHome</home> <remote>session.HelloRemote</remote> <ejb-link>Ejb.jar#Hello</ejb-link> </ejb-ref> <ejb-ref> <ejb-ref-name>controls.Answer.jcx</ejb-ref-name> <ejb-ref-type>Entity</ejb-ref-type> <home>entity.GetAnswerHome</home> <remote>entity.GetAnswerRemote</remote> <ejb-link>Ejb.jar#GetAnswer</ejb-link> </ejb-ref> ...</pre>
9310218	<p>After upgrading a WLP domain to version 10.3.2 configured for RDBMS policy persistence, managed servers do not start.</p> <p>After upgrading a WLP domain to version 10.3.2 and configuring policy persistence to the RDBMS security store, managed servers fail with embedded LDAP exceptions.</p> <p>Platform: All</p> <p>Workaround: None. Please request a patch for WLS Bug 8295750.</p>

Table 1–4 (Cont.) Known Limitations and Workarounds for WebLogic Portal and Oracle Enterprise Pack for Eclipse Upgrade

Problem ID	Description
9038256	<p>After upgrading a WLP domain to version 10.3.2, managed server do not start.</p> <p>After upgrading a WLP domain to version 10.3.2 and successfully restarting all servers, if a customer then switches policy persistence to the RDBMS security store, managed servers fail with XACML policy persistence errors.</p> <p>Platform: All</p> <p>Workaround: None. Please request a patch for WLS Bug 9040755</p>

1.6.3 Oracle Enterprise Pack for Eclipse Framework and Development

Table 1–5 lists known limitations and workarounds for Oracle Enterprise Pack for Eclipse framework and development.

Table 1–5 Known Limitations and Workarounds for Oracle Enterprise Pack for Eclipse Framework and Development

Problem ID	Description
8086654	<p>After configuring a new 10.3.2 WLP domain to use RDBMS policy persistence for Sybase, server does not start.</p> <p>After configuring a new 10.3.2 WLP domain to use RDBMS policy persistence for Sybase, server does not start and SecurityServiceExceptions occur.</p> <p>Platform: All</p> <p>Workaround: None. Please request a patch for WLS Bug 8180471.</p>
CR275545	<p>JRockit JVM is the recommended JVM for iterative development.</p> <p>JRockit JVM is the recommended JVM for iterative development. Using other JVMs may result in significant errors after a number of application redeployments.</p> <p>Platform: Windows and Linux.</p> <p>Workaround: Use JRockit JVM as the default JVM for all iterative development.</p>
CR278318	<p>Opening WebLogic Portal Administration Console may fail to publish projects.</p> <p>If your Portal EAR project has been published, untargeted, and subsequently retargeted on a server instance, the open WebLogic Portal Administration Console menu action may fail to republish your application when invoked. This will manifest itself as a 404 response code upon access to the WebLogic Portal Administration Console.</p> <p>Platform: All</p> <p>Workaround: Manually publish your Portal EAR Projects by right-clicking the appropriate server entry in the Servers view, and selecting Publish. The open WebLogic Portal Administration Console menu item will then work properly.</p>
9360991	<p>Domain upgrade may fail to correctly upgrade some Workshop libraries or target certain libraries to the server.</p> <p>After executing domain upgrade, certain Workshop libraries might not have been correctly upgraded to the 10.3.2 version. Further, certain libraries might not be targeted to a server.</p> <p>Platform: All</p> <p>Workaround: Apply patch LWP4 (Passcode: W27FZUBH)</p>

Table 1–5 (Cont.) Known Limitations and Workarounds for Oracle Enterprise Pack for Eclipse Framework and Development

Problem ID	Description
CR351036	<p>Application deployment in a domain with a DB2 database may result in a warning message regarding the privilege to perform SELECT on table SYSIBM.SYSDUMMY1.</p> <p>When an application is deployed in a domain that uses a DB2 database, a harmless warning message may be displayed such as:</p> <pre>[BEA][DB2 JDBC Driver][DB2]USER1 DOES NOT HAVE PRIVILEGE TO PERFORM OPERATION SELECT ON THIS OBJECT SYSIBM.SYSDUMMY1</pre> <p>Platform: All</p> <p>Workaround: To prevent this message, grant the privilege to perform SELECT on the table SYSIBM.SYSDUMM1 to PUBLIC. For example, GRANT SELECT ON SYSIBM.SYSDUMMY1 TO PUBLIC;</p>
CR357922	<p>Some Oracle Enterprise Pack for Eclipse JSF tooling features are suppressed in order to support both JSF and NetUI.</p> <p>When developing a Portal-enabled web application that uses JSF, some of Oracle Enterprise Pack for Eclipse's JSF tooling features are suppressed in order to support both JSF and NetUI including:</p> <ul style="list-style-type: none"> ■ The button that launches the Select Navigation Case Chooser dialog does not appear in the Oracle Enterprise Pack for Eclipse property sheet. ■ Validation warnings for referencing non-existent actions are suppressed. ■ Oracle Enterprise Pack for Eclipse does not support the Ctrl+hover gesture used to click-through to navigation cases in faces-config.xml. <p>Platform: All</p> <p>Workaround: None.</p>
9360210	<p>Eclipse binary from installer is not executable on Linux or Unix.</p> <p>The eclipse launcher create from the installer at <install-dir>/bea/oepe_11gR1PS1/eclipse/eclipse is not marked as executable.</p> <p>Platform: Linux, Unix variants</p> <p>Workaround: Make the file executable: <code>chmod +x <install-dir>/bea/oepe_11gR1PS1/eclipse/eclipse</code></p>

1.6.4 WebLogic Portal Framework and Development

Table 1–6 lists known limitations and workarounds for WebLogic Portal framework and development.

Table 1–6 Known Limitations and Workarounds for WebLogic Portal Framework and Development

Problem ID	Description
CR221434	<p>The Export/Import Utility creates an additional locale for artifacts imported in a non-English locale.</p> <p>This problem occurs in the situation where the user localizes a book in the library to a non-en_US locale, and then exports the book as a .pinc and imports the .pinc to a destination in the non-en_US locale. Upon importing the resource, scoped to the Library level, the Export/Import Utility creates an entry in the L10N_LOCALE table for all pages and books in the library rather than only in the main book, even though the other library artifacts were not localized.</p> <p>Platform: All</p> <p>Workaround: Avoid using the Library scope when importing the .pinc resource in a non-en_US locale.</p>
CR270742	<p>When async rendering is enabled for a portlet, portlets cannot directly change window modes or states.</p> <p>WebLogic Portal allows portlets to change the current window state and/or mode of a portlet either programmatically, or via parameters added to URLs. When async rendering (either via AJAX or iframes), these mechanisms will not provide a consistent view to the end user. Particularly, the title bar rendered above the portlet will not reflect the change in the mode or state immediately.</p> <p>Platform: All</p> <p>Workaround: None</p>
CR270887	<p>Proxy portlet state management: 8.1.x consumers do not properly recover producer session timeouts.</p> <p>For a federated configuration in which the consumer is running 8.1.x, the consumer may not recover properly from producer session timeouts.</p> <p>Platform: All</p> <p>Workaround:</p> <ol style="list-style-type: none"> 1. The consumer session timeout must be strictly less than the smallest positive session timeout of all producers. For example, suppose a consumer portal has three proxy portlets PP1, PP2 and PP3 corresponding to three remote producers RP1, RP2 and RP3. RP1 has no sessions (session timeout = 0), RP2 has a session timeout of 5 min. and RP3 has a session timeout of 2 minutes. Then the session timeout for the consumer must be less than 2 minutes. 2. Assign all proxy portlets to a different group. The downside of this option is that remote portlets that wish to share state cannot. 3. Finally, if (1) and (2) are not viable options, the user will need to close his or her browser and reopen the portal in the event of a producer session timeout.

Table 1–6 (Cont.) Known Limitations and Workarounds for WebLogic Portal Framework and Development

Problem ID	Description
CR271035	<p>Uncompressed URL templates must be used when generating off-site URLs.</p> <p>When using GenericURL, its subtypes or the corresponding JSP tags to generate off-site URLs (i.e.: URLs to resources that are not hosted in the web application of the code generating the URL) in a web application that has compression enabled, a URL template with compression disabled must be specified.</p> <p>For example,</p> <pre>GenericURL redirectURL = GenericURL.createGenericURL(request, response); redirectURL.setDomain("www.yahoo.com"); redirectURL.setPort(80); redirectURL.setPath("/compressedUrl/index.html"); redirectURL.setTemplate("no_compression_template");</pre> <p>where "no_compression_template" is the name of a URL template that excludes the {url:compression} pseudo-token.</p> <p>Platform: All</p> <p>Workaround: Do not use URL compression, or do not use GenericURL to construct URLs to off-site resources.</p>
CR275621	<p>Server port changes that are made to a running server require a portal application restart.</p> <p>If a server port (HTTP or HTTPS) is made to a running server, any affected portal applications need to be restarted for the changes to be picked up.</p> <p>Platform: All</p> <p>Workaround: Redeploy the EAR.</p>
CR280098	<p>WebLogic Portal does not support changing the context-root of an existing portal web application with customized portal objects.</p> <p>Once a .portal file has been customized, or if entitlements have been created for a desktop, the context-root of the web application cannot be changed without losing the customizations and the entitlements.</p> <p>Platform: All</p> <p>Workaround: Do not change the context-root value:</p>
CR287496	<p>The onInit events are not supported for remote portlets.</p> <p>Portlets can optionally register an event handler to get notified when portlets gets initiated by registering a handler of type "onInit". This feature is not currently supported for remote portlets.</p> <p>Platform: All</p> <p>Workaround: In general, portlets can run onInit logic lazily either when a user interaction occurs, or when another event is handled.</p>
CR318064	<p>Expression-based visitor roles, which use multiple-user property-set values, may return a false negative, preventing a visitor from correctly assuming the role.</p> <p>If a visitor role has multiple property-based conditions OR'd together, and if any of the input values (supplied via UUP impl or the default property manager) to a condition are null, the result (and therefore the role) is indeterminate because null is not explicitly checked for.</p> <p>Platform: Occurs only in XACML security providers.</p> <p>Workaround: Always include a default value for property set attributes, so a null is never used during comparisons.</p>

Table 1–6 (Cont.) Known Limitations and Workarounds for WebLogic Portal Framework and Development

Problem ID	Description
CR322670	<p>Portlet render dependencies do not support fully-qualified URLs to reference HTTP addressable resources.</p> <p>A portlet's render .dependencies file does not support using fully-qualified URLs to reference script, style, and other HTTP addressable resources. For example, a script reference to Google Maps that is defined in a .dependencies file will result in an error such as "The look and feel resource at base path <path> could not be found."</p> <p>Platform: All</p> <p>Workaround: Two workarounds are available:</p> <p>The <code>com.bea.netuix.laf.DynamicHtmlRenderDependencies</code> class programmatically supports adding script, link, and style references to a portal during rendering via its "add" methods. This class can be used in a backing file to ensure that the resources for a portlet are correctly defined.</p> <ul style="list-style-type: none"> ■ Add dependencies from a portlet's view. <pre>DynamicHtmlRenderDependencies.add(Script Link Style) (...)</pre> <p>Note: Use of this approach is limited if multiple portlets attempt to load the same resource. If this is the case loading duplicated resources in this way should be protected against in JavaScript or should be avoided.</p>
CR339012	<p>REST requires fine granularity to determine who can create new library portlets.</p> <p>REST requires a fine granularity to control the ability for end users to create new library portlets.</p> <p>Platform: All</p> <p>Workaround: Use the <code>rest-config.xml</code> or <code>web.xml</code> file as follows:</p> <ul style="list-style-type: none"> ■ Disable the REST servlet. ■ Disable the create portlet REST command via <code>rest-config.xml</code>. ■ Implement a version of <code>com.bea.wlp.rest.command.MethodPermission</code> to perform custom access checking and configuring via <code>rest-config.xml</code>.
CR339021	<p>Default polling changed from 3 to 5 seconds.</p> <p>The default polling interval has been increased. This interval is set in the system property:</p> <pre>-Dcom.bea.p13n.management.ApplicationFilePoller.sleepInterval</pre> <p>Platform: All</p> <p>Workaround: None.</p>
CR340097	<p>Icons do not to render in Portal Administration Console tools when a space exists in the name of a Portal EAR project.</p> <p>For example, if there is a space in the name of a Portal EAR project, icons in the console do not appear in the Create Desktop wizard and the administration console displays missing icon errors:</p> <pre><Aug 30, 2007 1:33:00 PM MDT> <Error> <netuix> <BEA-423139> <The look and feel resource wlp-help-16.gif could not be found in the path /framework/skins/default/images.></pre> <p>Platform: All</p> <p>Workaround: Remove any spaces in the Portal EAR project name.</p>

Table 1–6 (Cont.) Known Limitations and Workarounds for WebLogic Portal Framework and Development

Problem ID	Description
CR342124	<p>JSF validation does not work with the portal namingContainer tag and causes IllegalStateException: Client-id.</p> <p>A known problem exists in some versions of JSF 1.1, where the sequence number used to generate IDs for components that do not specify their own client ID is not reset. This eventually results in the <code>IllegalStateException</code> in cases where a MyFaces page is re-rendered and there is no navigational rule defined.</p> <p>Platform: All</p> <p>Workaround: Several workarounds are available:</p> <ul style="list-style-type: none"> ■ JSF 1.2, where the generated ID sequencing is handled differently. ■ Use a version of JSF 1.1 where the issue has been fixed (currently no such versions ship with 10.2). ■ Surround the <code>namingContainer</code> component with an <code>f:subview</code> component, which serves to reset the sequence generation. <p>Note: No portal behavior changes due to this problem.</p>
CR342843	<p>Cannot remove title bar from Java Portlets (JSR-168).</p> <p>The title bar cannot be removed from Java Portlets (JSR-168).</p> <p>Platform: All</p> <p>Workaround: Use the borderless theme on your portlet to remove the title bar.</p>
CR344368	<p>Different bean instances are used for JSF than for JSTL tags using jsp:useBean.</p> <p>If a JSF portlet attempts to integrate JSTL tags with JSF managed beans using <code>jsp:useBean</code>, different bean instances are used for JSF than for the JSTL tags.</p> <p>Platform: All</p> <p>Workaround: This is due to the fact that <code>jsp:useBean</code> is not aware of the managed bean environment used by JSF. To work correctly, the bean instances referenced by <code>jsp:useBean</code> must first be "primed" by either accessing them from within JSF or explicitly calling to the variable resolver with something like:</p> <pre><jsp:scriptlet> javax.faces.context.FacesContext.getCurrentInstance().get Application(). getVariableResolver().resolveVariable(javax.faces.context .FacesContext. getCurrentInstance(), 'myVar'); </jsp:scriptlet></pre>
CR344822	<p>When an Apache MyFaces is the underlying JSF implementation provider, invalidating the session results in an IllegalStateException.</p> <p>In a JSF portlet that uses Apache MyFaces as the underlying JSF implementation provider, invalidating the session in JSF application logic results in an <code>IllegalStateException</code> following the processing of the JSF action.</p> <p>Platform: All</p> <p>Workaround: Use one of the following methods:</p> <ul style="list-style-type: none"> ■ Do not invalidate the session on logout. ■ Use a different JSF implementation, such as Sun RI. ■ Use a different version of MyFaces, where the installed <code>NavigationHandler</code> checks to see if the request is for a MyFaces JSF bridge, checks the session validity, or catches <code>IllegalStateExceptions</code> when the session has been invalidated. ■ Perform the session invalidation in a backing file. ■ Redirect to an intermediate non-JSF portlet, such as a servlet or <code>.jsp</code>, that invalidates the session and forwards to the login page.

Table 1–6 (Cont.) Known Limitations and Workarounds for WebLogic Portal Framework and Development

Problem ID	Description
CR344835	<p><f:param> JSF tag does not work with WSRP.</p> <p>The <code><f:param></code> tag will not work when using WSRP. This is due to request parameters being unavailable during the pre-render and render life cycle stages. This is true for all portlet types consumed via WSRP. See "Avoid Accessing Request Parameters in Rendering Code" in <i>Oracle Fusion Middleware Federated Portals Guide for Oracle WebLogic Portal</i>.</p> <p>Platform: All</p> <p>Workaround: Parameters should be placed in a container managed bean or processed during the <code>handlePostBackData</code>.</p>
CR348667	<p>Portlets must have title attribute specified to be disassembled into the database.</p> <p>The <code>.portlet</code> XML schema allows for portlets to not specify the <code><title></code> attribute. However, titles are required for successful disassembly of a portlet into the database. Attempting to disassemble a portlet that has no <code><title></code> attribute set will produce an <code>XmlDisassemblerException</code>.</p> <p>Platform: All</p> <p>Workaround: Add a <code><title></code> attribute to your <code>.portlet</code> file to ensure successful disassembly.</p>
CR358125	<p>When publishing a portlet, publishing service does not properly reflect themes from publishing contexts.</p> <p>If a portlet instance is influenced by a theme, render dependencies may not properly reflect the influence of the theme. Subsequently, the published version of the portlet will not correctly render the theme. This applies to portlets published in API and URL modes.</p> <p>Portlets published in full URL mode will not include visual aspects of the theme.</p> <p>Platform: All</p> <p>Workaround: There is no known workaround for this issue.</p>
CR359073	<p>Harmless error message logged by Lease Manager.</p> <p>The following error message is logged by Lease Manager, which is harmless and can be ignored.</p> <pre><BEA-403302> <An unexpected SQL exception occurred java.sql.SQLException: Data exception -- row already exist in index PK_LEASE on table P13N_LEASE.</pre> <p>The error is logged only in cluster environment when two or more nodes are concurrently trying to acquire the same lease.</p> <p>Platform: All, in a clustered environment.</p> <p>Workaround: None, not required.</p>
CR359274	<p>Asynchronous JavaScript imports via XIE may cause Internet Explorer 7 to hang if referenced script does not exist.</p> <p>If portlet content or render dependencies are loaded via XIE that refer to an external JavaScript resource that does not exist, or may otherwise fail to load, XIE lifecycle processing in Internet Explorer 7+ will hang. This is because XIE attempts to mimic initial browser loading behavior by executing scripts serially, even when such scripts are fetched asynchronously by the browser, as with IE7+. If the attempt to load the script fails (typically because it does not exist), IE7+ halts advancement of the <code>readyState</code> field for that script at "loading" and produces no error message.</p> <p>Platform: All</p> <p>Workaround: Ensure that <code>.js</code> files referenced in this way exist at the specified path.</p>
CR367450	<p>Content Presenter Preview Mode will not show Theme changes.</p> <p>Content Presenter's Preview Mode shows the current user a preview of how the portlet will render with the current wizard settings. However, in this release the Preview Mode will not show changes to the Theme setting. To see the effect of your Theme selection, please save the changes made in the wizard.</p> <p>Platform: All</p> <p>Workaround: Save your changes to see your Theme applied.</p>

Table 1–6 (Cont.) Known Limitations and Workarounds for WebLogic Portal Framework and Development

Problem ID	Description
CR378287	<p>Problems on Linux platform when using drag and drop operations in portal editors.</p> <p>There are known problems dragging and dropping components when multiple portal (or other associated portal artifact) editors are opened simultaneously. This problem is only applicable to the Linux platform. Drag and drop operations targeting the active (visible) portal editor will be mishandled and incorrectly delivered to the underlying inactive (not visible) portal editor tab. This problem has been noted both when dragging components from the workshop design palette over to a portal editor or when using drag and drop to reposition components within a portal editor.</p> <p>Platform: Enterprise Linux 5</p> <p>Workaround: Close other inactive open editor tabs such that you are only working with ONE open portal (or other associated portal artifact) editor at a time.</p>
CR378460	<p>Non-web facets are displayed when modifying the facets of a project that had facet install failures during creation.</p> <p>During project creation, if a facet failed to install, the wizard for modifying the project's facets available from the project properties will show non-web facets which are not valid for the project. The wizard won't let you select those facets and their appearance is harmless.</p> <p>Platform: All</p> <p>Workaround: Ignore the additional facets.</p>
CR379143	<p>No JSP created when a Page Flow Portlet is created via the Portlet Wizard.</p> <p>If you use the Portlet Wizard to create a Page Flow portlet, the appropriate home jsp is not created. For example, if you create a page flow /my/Flow.jspf, then that page flow will point to a default JSP at /my/flow.jsp. However, the wizard will not create this JSP file.</p> <p>Platform: All</p> <p>Workaround: Manually create the jsp. Or, create the page flow first, using the page flow creation wizard, and then create the portlet from the page flow.</p>
8880107	<p>Inlined portlets are not automatically disassembled into the database so inlined portlets should not be used in a portal that will be used to create a streaming desktop.</p> <p>An inlined portlet is a portlet whose markup is included directly in the placeholder element of a .portal file., as opposed to a non-inlined portlet that is included in the placeholder through the use of the <netuix:portletInstance> tag. You can use the XML viewer in the IDE to see the markup for your .portal. The most common use case for inlined portlets is via remote pages. When you use the IDE to create a remote page then a .page file is built that includes remote portlets as inlined portlets.</p> <p>Platform: All</p> <p>Workaround: Do not use .portals with inlined portlets as templates for streaming desktops. For the use case of remote pages you will need to create your own local page, create a remote portlet for each portlet from the producer, and place the remote portlets on your page. This can be done automatically by viewing the page in the IDE, right-clicking on the portlet and selecting "Extract Portlet to New File...". This will create the .portlet file and modify your .page file to reference the .portlet file.</p> <p>If your desktop is already created then you can fix the missing inlined portlets by creating a portlet file for each missing inlined portlet (using the IDE) and then add them to your desktop in the web based Portal Administration Tools.</p>

Table 1–6 (Cont.) Known Limitations and Workarounds for WebLogic Portal Framework and Development

Problem ID	Description
9184707	<p>Struts sample app doesn't work in portal web project.</p> <p>By default, when you add the Struts facets to a web project, it creates a sample <code>index.jsp</code>, <code>pages/welcome.jsp</code>, and <code>WEB-INF/config/struts-config.xml</code> file. After you add the Portal Framework Struts facet, those jsps and struts configuration will return a server 500 server, and a stacktrace similar to the following will show:</p> <pre>javax.servlet.jsp.JspException: Cannot create redirect URL: java.net.MalformedURLException: Cannot retrieve ActionForward named welcome at org.apache.struts.taglib.logic.RedirectTag.generateRedirectURL(RedirectTag.java:309) at org.apache.struts.taglib.logic.RedirectTag.doEndTag(RedirectTag.java:268) at jsp_servlet.__index.__jsp__tag0(__index.java:111) at jsp_servlet.__index.__jspService(__index.java:75) at weblogic.servlet.jsp.JspBase.service(JspBase.java:34) Truncated. see log file for complete stacktrace</pre> <p>Platform: All</p> <p>Workaround: Don't use the sample struts files. They can safely be deleted and new struts modules created.</p>
9270826	<p>Serialization exception from <code>ClipperSourceProxyServlet\$WrappedServletConfig</code> after building project.</p> <p>It is possible to receive an error message in the server console like the following:</p> <pre><Jan 8, 2010 11:16:58 AM MST> <Error> <HTTP> <BEA-101002> <[ServletContext@24337993[app:pEar module:perfWebJava path:/perfWebJava spec-version:2.5]] Could not deserialize the context attribute. java.io.NotSerializableException: com.bea.netuix.clipper.ClipperResourceProxyServlet\$WrappedServletConfig</pre> <p>If you modify a <code>.class</code> file in a web project and access the webapp without redeploying. This will typically occur when using Eclipse after a build finishes, if you access the webapp in a browser without republishing or use the Run On Server functionality.</p> <p>Platform: All</p> <p>Workaround: Redeploy the webapp. In Eclipse, use the Run As Run On Server option to access the webapp, or publish the application from the Servers view.</p>
9352966	<p>commandLinks in JSF portlets don't work for async portlets or async desktop.</p> <p>A JSF <code>commandLink</code> is contained in a JSF form. When the JSF form is submitted by clicking the <code>commandLink</code> the client-side code in JSF adds an input to the form, calls <code>form.submit()</code>, and then immediately removes the input. For an asynchronous portal request, the form action has been rewritten to execute a DISC function upon form submittal. Upon form submittal, the form is processed via the portal's DISC framework to create an <code>XmlHttpRequest</code> (XHR) that is used to asynchronously update the portlet. DISC needs all of the form inputs to create the XHR. When JSF removes the form input it is not available to the DISC framework that looks for the form in the DOM. This problem can be obtained with a patch.</p> <p>Platform: All</p> <p>Workaround: Contact Oracle Support for a patch or do not use async portals/portlets with JSF.</p>

Table 1–6 (Cont.) Known Limitations and Workarounds for WebLogic Portal Framework and Development

Problem ID	Description
9352656	<p data-bbox="337 262 797 283">Extra Sessions are created on the producer.</p> <p data-bbox="337 302 1341 405">Extra HTTP sessions are created on the producer when fetching the WSDL, getting the service description and managing proxied portlets and when releasing sessions. Customers have reporting seeing between 16 and 250 extra sessions on their producers. While these sessions are small and will time-out they may cause performance degradation.</p> <p data-bbox="337 422 841 443">Platform: All platforms. WLP 8.1 through 10.3.2</p> <p data-bbox="337 462 1263 483">Workaround: Add <code>/producer/</code> to the <code>PortalServletFilters</code> in your <code>web.xml</code> as follows:</p> <pre data-bbox="337 501 1321 1686"> <filter> <filter-name>PortalServletFilter</filter-name> <filter-class>com.bea.p13n.servlets.PortalServletFilter</filter-class> <init-param> <description> Skip over these type of requests (no profile manipulation). Pattern is glob-style. This entry defaults to the above pattern. </description> <param-name>skipRequestPattern</param-name> <param-value>/css/, /js/, /image*/, /wlwdir, /ensureAppDeployment, /producer/</param-value> </init-param> <init-param> <description>Option to fire SessionLoginEvent , defaults to false if not set</description> <param-name>fireSessionLoginEvent</param-name> <param-value>>true</param-value> </init-param> <init-param> <description>Filter will create an anonymous profile for every session. Defaults to true if not set</description> <param-name>createAnonymousProfile</param-name> <param-value>true</param-value> </init-param> <init-param> <description>Option to track anonymous users, defaults to false if not set. 'createAnonymousProfile' is ignored if this is true</description> <param-name>enableTrackedAnonymous</param-name> <param-value>>false</param-value> </init-param> <init-param> <description>Length in seconds visitor must be on site before we start tracking them . Defaults to 60 seconds if not set </description> <param-name>trackedAnonymousVisitDuration</param-name> <param-value>60</param-value> </init-param> </filter> </pre>

Table 1–6 (Cont.) Known Limitations and Workarounds for WebLogic Portal Framework and Development

Problem ID	Description
9352038	<p>Pageflow portlets using JSF pages do not render content.</p> <p>If a pageflow uses JSF pages for its content, these pages might not render when the pageflow is used as a portlet.</p> <p>Platform: All</p> <p>Workaround: Don't use JSF pages for pageflows. By default, JSF pages are created when using the New Page Flow wizard in a JSF-enabled web project. If you do not need JSF in your webapp, do not enable the JSF project facet when creating the project via the Modify facets button; alternatively, use the "WebLogic Portal Beehive Web Project Facets" preset when creating web project. If the JSF facets is already enabled in the project, it can disabled via the Project Facets Properties page on the project. If JSF is required in other parts of the project, create the pageflow via the New Portlet wizard when you create the pageflow portlet. Or, you can edit the forward path in the pageflow to point directly to the JSP and edit the generated JSP to not use JSF.</p>
9348328	<p>Portlet titlebar buttons do not work for IFramed portlets running in async desktop.</p> <p>Portlets with an async content-type of "iframe_unwrapped", including JSR286 portlets using the container runtime option "requiresIFrame", do not work properly on an asynchronous desktop. Specifically, the titlebar buttons to allow portlet mode or state changes do not work.</p> <p>Platform: All platforms. WLP 10.3 through 10.3.2, where the <code>iframe_unwrapped</code> content-type is supported.</p> <p>Workaround: If an IFrame is required around a portlet on a desktop, do not use the asynchronous desktop feature on the desktop, or do not have the portlet's titlebar buttons displayed.</p>
9105747	<p>PageFlow settings do not get added to web.xml when facelets also added.</p> <p>In Oracle Enterprise for Eclipse, if the Facelet facet is added to a web project that also has Beehive NetUI and Dynamic Web Module 2.5 facets, the pageflow <code>web.xml</code> settings will be lost. This will make PageFlows not run correctly.</p> <p>Platform: All</p> <p>Workaround: Follow the procedure outlined in Section 1.6.4.1, "Workaround for 9105747."</p>
8937425	<p>Ctrl+C, Ctrl+X, Ctrl+V (Copy, Cut, Paste) keyboard shortcuts don't work in Weblogic Portal IDE dialogs that are implemented using Swing/AWT.</p> <p>There has been an Eclipse bug filed against Eclipse 3.5 (Galileo) which states that Swing text components hosted over the Eclipse SWT_AWT bridge do not receive the proper key event sequence when the Ctrl+C, Ctrl+X, Ctrl+V (Copy, Cut, Paste) keyboard shortcuts are used. To be more specific, the <code>KEY_PRESSED</code> and <code>KEY_TYPED</code> events are not being fired during the key sequence. As a result the key bindings for (Copy, Cut, Paste) operations are ignored. This does not effect text components implemented natively in the Eclipse SWT technology. For further details please refer to the following Eclipse bug report:</p> <p>https://bugs.eclipse.org/bugs/show_bug.cgi?id=294117</p> <p>Platform: Windows, Linux</p> <p>Workaround: Manually type text entries in all Swing/AWT dialogs hosted over the Eclipse SWT_AWT bridge. The (Copy, Cut, Paste) keyboard shortcuts cannot be used.</p>
8176094	<p>User must be logged in to view WebCenter portlets when SAML is enabled.</p> <p>Anonymous users who try to view a WebCenter portlet when the producer has SAML enabled will see an exception.</p> <p>Platform: All</p> <p>Workaround: Entitle the proxy portlet so only authenticated users may view WebCenter portlets.</p>

Table 1–6 (Cont.) Known Limitations and Workarounds for WebLogic Portal Framework and Development

Problem ID	Description
8275978	<p>Served resources functionality over WSRP using local proxy contains outages.</p> <p>JSR286 portlets that have serve resource functionality (implement the <code>serveResource</code> method) may see outages when run over WSRP via local proxy. These outages include the use of URL parameters on the <code>ResourceURL</code> during file upload and <code>ResourceURL.setSecure()</code>. In the case of the URL parameters, if the <code>serveResource()</code> call is uploading a file and parameters are set on the <code>ResourceURL</code>, the parameters are not sent to the producer as expected. For <code>ResourceURL.setSecure()</code>, if the <code>serveResource</code> request is sent over local proxy, a new session is created, which causes the producer to return an <code>InvalidSession</code> fault to the consumer.</p> <p>Platform: All platforms</p> <p>Workaround: Run WSRP JSR286 portlets with <code>serveResource</code> implementations through remote proxy.</p>
9377802	<p>Processing of XML event payloads in JSR286 portlets may result in a <code>ClassNotFoundException</code> on IBM platforms.</p> <p>When processing an XML event payload in a JSR286 portlet, a <code>java.lang.ClassNotFoundException</code> might occur.</p> <p>Platforms: IBM (zSeries Linux and AIX)</p> <p>Workaround: Contact Oracle Support for Patch ID: 6GEH.</p>
9375294	<p>A <code>java.beans.IntrospectionException</code> occurs when using <code>com.bea.p13n.security.config.AtnHierarchyBean</code> on IBM platforms.</p> <p>An <code>IntrospectionException</code> might occur when using the <code>AtnHierarchyBean</code>.</p> <p>Platforms: IBM (z/Linux and AIX)</p> <p>Workaround: Contact Oracle Support for Patch ID: 5PQL.</p>

1.6.4.1 Workaround for 9105747

To perform the workaround for Bug 9105747, add the pageflow settings to the `web.xml` file as follows:

1. Replace the action `<servlet>` entry with:

```
<servlet>
    <servlet-name>action</servlet-name>

    <servlet-class>org.apache.beehive.netui.pageflow.PageFlowActionServlet</servle
t-class>
    <init-param>
        <param-name>config</param-name>
        <param-value>/_pageflow/struts-config.xml</param-value>
    </init-param>
    <init-param>
        <param-name>debug</param-name>
        <param-value>2</param-value>
    </init-param>
    <init-param>
        <param-name>detail</param-name>
        <param-value>2</param-value>
    </init-param>
    <load-on-startup>2</load-on-startup>
</servlet>
```

2. Add the following entries to the `web.xml` file:

```
<filter>
    <filter-name>PageFlowJspFilter</filter-name>
```

```

<filter-class>org.apache.beehive.netui.pageflow.PageFlowJspFilter
</filter-class>
</filter>
<filter>
    <filter-name>PageFlowForbiddenFilter</filter-name>

<filter-class>org.apache.beehive.netui.pageflow.PageFlowForbiddenFilter
</filter-class>
    <init-param>
        <param-name>response-code</param-name>
        <param-value>404</param-value>
    </init-param>
</filter>
<filter-mapping>
    <filter-name>PageFlowJspFilter</filter-name>
    <url-pattern>*.jsp</url-pattern>
    <dispatcher>FORWARD</dispatcher>
    <dispatcher>REQUEST</dispatcher>
    <dispatcher>INCLUDE</dispatcher>
</filter-mapping>
<filter-mapping>
    <filter-name>PageFlowJspFilter</filter-name>
    <url-pattern>*.jspx</url-pattern>
    <dispatcher>FORWARD</dispatcher>
    <dispatcher>REQUEST</dispatcher>
    <dispatcher>INCLUDE</dispatcher>
</filter-mapping>
<filter-mapping>
    <filter-name>PageFlowForbiddenFilter</filter-name>
    <url-pattern>*.java</url-pattern>
    <dispatcher>REQUEST</dispatcher>
</filter-mapping>
<filter-mapping>
    <filter-name>PageFlowForbiddenFilter</filter-name>
    <url-pattern>*.jsfb</url-pattern>
    <dispatcher>REQUEST</dispatcher>
</filter-mapping>
<filter-mapping>
    <filter-name>PageFlowForbiddenFilter</filter-name>
    <url-pattern>*.jpfs</url-pattern>
    <dispatcher>REQUEST</dispatcher>
</filter-mapping>
</listener>

<listener-class>org.apache.beehive.netui.pageflow.PageFlowContextListener
</listener-class>
</listener>
<listener>

<listener-class>
    org.apache.beehive.netui.pageflow.HttpSessionMutexListener
</listener-class>
</listener>
<servlet>
    <servlet-name>XmlHttpRequestServlet</servlet-name>

<servlet-class>
    org.apache.beehive.netui.pageflow.xmlhttprequest.XmlHttpRequestServlet
</servlet-class>
</servlet>

```

```
<servlet-mapping>
  <servlet-name>action</servlet-name>
  <url-pattern>*.jpf</url-pattern>
</servlet-mapping>
<servlet-mapping>
  <servlet-name>XmlHttpRequestServlet</servlet-name>
  <url-pattern>*.xhr</url-pattern>
</servlet-mapping>
<servlet-mapping>
  <servlet-name>XmlHttpRequestServlet</servlet-name>
  <url-pattern>*.render</url-pattern>
</servlet-mapping>
<filter>
  <filter-name>PageFlowFacesFilter</filter-name>

  <filter-class>org.apache.beehive.netui.pageflow.PageFlowFacesFilter
</filter-class>
</filter>
<filter-mapping>
  <filter-name>PageFlowFacesFilter</filter-name>
  <url-pattern>*.faces</url-pattern>
  <dispatcher>FORWARD</dispatcher>
  <dispatcher>REQUEST</dispatcher>
  <dispatcher>INCLUDE</dispatcher>
</filter-mapping>
<filter-mapping>
  <filter-name>PageFlowFacesFilter</filter-name>
  <url-pattern>*.jsf</url-pattern>
  <dispatcher>FORWARD</dispatcher>
  <dispatcher>REQUEST</dispatcher>
  <dispatcher>INCLUDE</dispatcher>
</filter-mapping>
<servlet-mapping>
  <servlet-name>Faces Servlet</servlet-name>
  <url-pattern>*.faces</url-pattern>
</servlet-mapping>
```

1.6.5 Content Management and Search

[Table 1-7](#) lists known limitations and workarounds for content management and search.

Table 1–7 Known Limitations and Workarounds for Content Management and Search

Problem ID	Description
CR381619	<p>IDOL Server does not successfully delete an entry from the index when the file is removed from a directory scanned by FileSystemFetch.</p> <p>Even though FileSystemFetch is configured to delete content from IDOL when an item is removed from the file system, the file is not properly removed from the IDOL Server index.</p> <p>Platform: All</p> <p>Workaround: Edit the FileSystemFetch configuration file (FileSystemFetch.cfg):</p> <ol style="list-style-type: none"> 1. To the [Default] section add 'QueryPort=9022' (change the port number to match the Queryport defined in AutonomyIDOLServer.cfg). 2. Do not use relative paths in the DirectoryPathCSVs entry in your Import job definitions. Only use fully qualified path entries.
CR295027	<p>Renaming nodes in a library services-enabled repository can cause the version name to become out of sync with the node's name.</p> <p>When library services are enabled, nodes should not be renamed. This can cause incorrect search results to be returned.</p> <p>Platform: All</p> <p>Workaround: None.</p>
CR342794	<p>JSR-170 JNDI provider logs misleading error messages due to improper classloading configuration.</p> <p>After configuring the JSR-170 JNDI content repository provider, users may encounter a misleading error message indicating that the object bound in JNDI did not implement the <code>javax.jcr.Repository</code> interface:</p> <pre>com.bea.content.RepositoryException: Object bound not of type javax.jcr.Repository: found a (org.apache.jackrabbit.jca.JCARepositoryHandle)</pre> <p>Platform: Jackrabbit Content Repository with JSR-170 JNDI provider</p> <p>Workaround: Ensuring that the <code>javax.jcr.Repository</code> is visible within the same classloader as the content repository application and the JSR-170 adapter may resolve this issue.</p> <p>For more information regarding application classloading, see:</p> <ul style="list-style-type: none"> ■ "Understanding WebLogic Server Application Classloading" in <i>Oracle Fusion Middleware Developing Applications for Oracle WebLogic Server</i>. ■ "Classloading Optimizations for Resource Adapters" in <i>Oracle Fusion Middleware Programming Resource Adapters for Oracle WebLogic Server</i>.
CR344651	<p>Unclear exception when using CM versioned repository API.</p> <p>The following cryptic message is displayed:</p> <p>Caused by: <code>java.io.IOException</code>: The operation completed successfully when running code in the versioned repository. This error message originates from the JVM, and generally means that a user is trying to pass in an <code>InputStream</code> which has already been consumed.</p> <p>Platform: All Sun JVM</p> <p>Workaround: Ensure that the <code>InputStream</code> being passed to content management has not already been consumed or read.</p>

Table 1–7 (Cont.) Known Limitations and Workarounds for Content Management and Search

Problem ID	Description
CR353875	<p>Filtering on search results from <code>IVersionManager.search()</code> is not available on the <code>modifiedDate</code> property.</p> <p>The API <code>ISortableFilterablePagedList.getAllFilterableProperties()</code> indicates for the result of the <code>IVersionManager.search()</code> that the caller may filter on the <code>modifiedDate</code> property. This is not currently functional as a <code>FilterCriteria</code> or via the <code>ISortableFilterablePagedList.refilter()</code> call.</p> <p>Platform: All</p> <p>Workaround: Specify the <code>modifiedDate</code> in the search expression and filter when initially executing the search.</p>
CR355982	<p>Delegated Administration users who can publish content need DA rights to view the Default workflow to use the Bulk Update tool.</p> <p>A Delegated Administration (DA) user who has Publisher capabilities for a content repository will also need the View capability on the default workflow. An example of Publisher capabilities would be View, Update, and Publish capabilities on a content repository. If the DA publisher does not have View capabilities on the default workflow, users will encounter <code>com.bea.content.AuthorizationException: "User does not have view privileges to view this workflow or its properties"</code> when they attempt to use publish content using the bulk update in the Workspace View in the Content Management Administration tools.</p> <p>Platform: All</p> <p>Workaround: Assign the View capability for the default workflow. It is not required to assign the View capability for any other workflows, even if the content that is being published uses a custom workflow instead of the default workflow. The bug is around the validation code that mistakenly retrieves the default workflow, no matter what.</p>

Table 1–7 (Cont.) Known Limitations and Workarounds for Content Management and Search

Problem ID	Description
CR358426	<p>Autonomy full-text search using notEquals or isNull with nested properties in a query does not include "parent property does not exist" results.</p> <p>All the possible nested values for a type are not indexed if they do not exist. Therefore, when searching for null or notEquals on a nested property name, the results will only contain values that are null or notEquals to the nested property name that was indexed.</p> <p>For example, a node of type "planet" contains one or more instances of type "continent". Each node of type "continent" contains one or more instances of type "country". In this case planet Earth would have a nested property of "continent[0].country[0].name" equal to Nigeria, while planet Mars would not have any continents or countries. Subsequently there would not be any nested properties of that name indexed for Mars.</p> <p>Platform: All</p> <p>Workaround: Use an inverse search.</p> <p>The original query would look like this:</p> <pre>IMetadataQuery mQuery = FullTextQueryFactory.getMetadataQuery(); IMetadataQueryParameter ftqp = mQuery.buildNotEquals('continent[0].country[0].name', 'Nigeria'); ftqp.setMultiplicity(IMetadataQuery.Multiplicity.multiValued); IFullTextSearch fullTextSearch = FullTextSearchFactory.buildFullTextSearch(ftqp, null, false); Search search = new Search(repositoryPath, -1, null, fullTextSearch, true); IPagedList<Node> nodes = searchManager.search(context, search); That query will return no nodes.</pre> <p>But, if you created an inverse query like this:</p> <pre>IMetadataQuery mQuery = FullTextQueryFactory.getMetadataQuery(); IMetadataQueryParameter mqp1 = mQuery.buildEquals('continent[0].country[0].name', 'Nigeria'); mqp1.setMultiplicity(IMetadataQuery.Multiplicity.multiValued); IMetadataQueryParameter mqp2 = mQuerymQuery.buildNotNull('continent'); mqp1.setMultiplicity(IMetadataQuery.Multiplicity.multiValued); IMetadataQueryParameter mqp3 = mQuery.buildIsNull('continent'); mqp1.setMultiplicity(IMetadataQuery.Multiplicity.multiValued);</pre>
CR358426 (continued)	<pre>IMetadataQueryParameter mqp = mqp2.or(mqp3).not(mqp1); IFullTextSearch fullTextSearch = FullTextSearchFactory.buildFullTextSearch(mqp, null, false); Search search = new Search(repositoryPath, -1, null, fullTextSearch, true); IPagedList<Node> nodes = searchManager.search(context, search); That query would return all planets except for Earth.</pre>

Table 1–7 (Cont.) Known Limitations and Workarounds for Content Management and Search

Problem ID	Description
CR358475	<p>WebDAV users need read access to the default workflow.</p> <p>The WebDAV code needs access to the default workflow to perform CRUD operations on any given resource in a managed WLP repository. If the logged-in user does not have the View capability on the default workflow, it could throw a (403) error message to the client.</p> <p>Platform: All</p> <p>Workaround: Make sure that all users accessing content management via WebDAV have the View capability on the default workflow.</p>
CR358596	<p>CR Bridge: JCR property value constraints not visible in WebLogic Portal property choices.</p> <p>When using the CM JCR Bridge, JCR property value constraints are not currently exposed in WebLogic Portal property choices. This limitation is present because some property value constraints, such as regular expressions and built-in repository constraints, cannot be resolved to a specific value.</p> <p>Platform: All</p> <p>Workaround: If a validation exception occurs when creating or updating a JCR property value, manually consult the JCR repository's property value constraints for the appropriate type to ensure a value meets all constraints.</p>
CR359853	<p>Sample domains are pre-populated with ObjectClasses that do not necessarily conform to file system repository data types.</p> <p>When using a file system repository, ObjectClasses are limited to only a single binary property. Some of the available out-of-the-box ObjectClasses have multiple binary properties, such as book. This makes it appear that it is possible to create a node in the file system repository of that type. However, internal validation code in the file system repository prevents this.</p> <p>Platform: All</p> <p>Workaround: None. When using the file system repository, nodes cannot be assigned an ObjectClass having multiple binary properties.</p>

Table 1–7 (Cont.) Known Limitations and Workarounds for Content Management and Search

Problem ID	Description
CR361658	<p data-bbox="505 260 1052 287">Error retrieving empty InputStreams from Sybase.</p> <p data-bbox="505 302 1425 432">Whenever a user tries to store an empty input stream or a zero-byte file via WebDAV in content management, the code converts it into a zero-byte input stream and stores it in the database. However, when the data is retrieved, the database does not return an empty input stream, but returns a null. Content management then traps that null and throws an error to the user.</p> <p data-bbox="505 447 1211 474">Platform: This problem has been known to occur in Sybase drivers.</p> <p data-bbox="505 489 1393 541">Workaround: Do not store zero-byte input streams into content management or zero byte files via WebDAV in a Sybase database.</p>
CR378677	<p data-bbox="505 558 1393 585">Copy/Paste not working with nested properties when library services are enabled.</p> <p data-bbox="505 600 1360 653">Copy/Paste for a content item that has a nested property containing a file upload property value doesn't work and throws the following exception:</p> <p data-bbox="505 667 1401 741">org.apache.beehive.netui.page flow.UnresolvableForwardException: Unable to find a forward named 'VIEW_RENDERER' on action view in page flow /content/popupsAndButtons/PopupButtonController.jspf.</p> <p data-bbox="505 756 789 783">To reproduce this problem:</p> <ol data-bbox="505 798 1442 1010" style="list-style-type: none"> <li data-bbox="505 798 833 825">1. Create a new content type. <li data-bbox="505 835 1442 863">2. Add a nested property to the content type that contains a file upload property value. <li data-bbox="505 873 1195 900">3. Create a new content item of that new type and upload a file. <li data-bbox="505 911 846 938">4. Save and check in the node. <li data-bbox="505 949 1442 1010">5. Create a new folder or use an existing one and try to copy/paste the content item to the new folder by using either right click or the context sensitive button feature. <p data-bbox="505 1024 805 1052">Platform: WLP 10.2 and 10.3</p> <p data-bbox="505 1066 646 1094">Workaround:</p> <p data-bbox="505 1108 1442 1161">Don't upload any file content in a nested property until after the node is copy/pasted or clear the nested property values and re-add them after the copy/paste operation.</p> <p data-bbox="505 1176 659 1203">To allow copy:</p> <ol data-bbox="505 1218 1065 1398" style="list-style-type: none"> <li data-bbox="505 1218 873 1245">1. Click on the new content node <li data-bbox="505 1255 808 1283">2. Select the properties tab. <li data-bbox="505 1293 716 1320">3. Click Checkout <li data-bbox="505 1331 1065 1358">4. Select the nested property's clear value checkbox <li data-bbox="505 1369 870 1396">5. Select the Clear Values button. <p data-bbox="505 1411 1425 1463">Caution: This will clear all your nested properties so the user must write them down or take a screenshot.</p> <ol data-bbox="505 1478 1060 1539" style="list-style-type: none"> <li data-bbox="505 1478 699 1505">6. Click checkin. <li data-bbox="505 1516 1060 1543">7. The user is now free to copy and paste the node.
9079801	<p data-bbox="505 1560 1414 1612">Multibyte characters in EAR names create 404 errors in Admin Tools when copying, pasting, or moving items in Content Management.</p> <p data-bbox="505 1627 1425 1701">There is support in the Portal Admin Tools for copying, pasting, and moving of folders and content nodes. However, this feature returns a 404 error when the associated enterprise application name contains multibyte characters.</p> <p data-bbox="505 1715 643 1743">Platform: All</p> <p data-bbox="505 1757 1442 1837">Workaround: Do not use multibyte characters in your EAR names. There are other issues with described in these Release Notes that also apply when using EARs with multibyte characters.</p>

1.6.6 Federation

Table 1–8 lists known limitations and workarounds for federation.

Table 1–8 Known Limitations and Workarounds for Federation

Problem ID	Description
CR174886	<p>WSRP: Portlet Preference description is not passed from the producer portlet to the proxy portlet.</p> <p>When an administrator views portlet preferences for remote portlets, WebLogic Portal Administration Console does not provide a description of preferences.</p> <p>Platform: All</p> <p>Workaround: Use more descriptive names for preferences.</p>
CR252633	<p>WSRP LocalProxy depends on client to send producer (session) cookies.</p> <p>When LocalProxy is enabled for WSRP, the client becomes responsible for sending cookies, especially the session cookie.</p> <p>In general, this is fine except in cases where the path parameter for the cookies of the producer is not the same as or a prefix of the path parameter for the cookies of the consumer. In these cases, the client will not necessarily send the producer cookies.</p> <p>Platform: All</p> <p>Workaround: Ensure that the session path parameter for cookies from the producer is the same as or a prefix of the path parameter for cookies from the consumer.</p>
CR263920	<p>Registration Properties do not contain default values.</p> <p>This is due to calling EntityPropertyManager.getProperties() which does not return default values.</p> <p>Platform: All</p> <p>Workaround: Do not use default values in registration properties. The consumer should send all values when registering.</p>
CR266570	<p>Remote portlets' minimized title is not preferred title.</p> <p>When a remote portlet sets the title programmatically, WebLogic Portal will use that title in the titlebar. This functionality is not supported when the remote portlet is minimized. When a remote portlet is minimized, WebLogic Portal will not contact the producer to render the portlet, and hence loses the dynamically set title.</p> <p>Platform: All</p> <p>Workaround: None</p>
CR269002	<p>WSRP Security signatures and encryptions do not work.</p> <p>Encryption (Confidentiality) and Signatures (Integrity) are not currently supported policy elements and are not currently supported for WSRP messages.</p> <p>Platform: All</p> <p>Workaround: Only use Identity elements in the policy</p>
CR272806	<p>WSRP local proxy mode does not support default context path or context path containing slash (/).</p> <p>If WSRP local proxy is enabled and the consumer accesses a producer with the default context path or a context path containing a slash (/), then the consumer request will fail.</p> <p>Platform: All</p> <p>Workaround:</p> <ol style="list-style-type: none"> 1. Do not configure producers that will be accessed via local proxy to have the default context path or a context path containing a slash (/), OR 2. Do not enable WSRP local proxy mode if any of the producers that could be accessed with the local proxy are configured to have the default context path or a context path containing a slash (/).

Table 1–8 (Cont.) Known Limitations and Workarounds for Federation

Problem ID	Description
CR334689	<p>WebLogic Portal does not support using Content Presenter in WSRP environments.</p> <p>Content Presenter and its portlet instances cannot currently be used as WSRP producers in WebLogic Portal 10.2.</p> <p>Platform: All</p> <p>Workaround: To access Content Presenter instances remotely, use Portlet Publishing.</p>
8880726	<p>An "unparsable date error" occurs in the Search Versions part of the Version History tab of a content item when the browser locale is changed between searches.</p> <p>Platform: All</p> <p>Workaround: One way around this problem is to click Clear Search, then reset the date and perform the search again; however, the recommended best practice is to always log out of the Administration Console before changing the browser's locale setting. Changing the browser's locale during a user's session in the Administration Console is not supported.</p>
8156639	<p>WLP Consumer does not automatically recover when an IBM WebSphere producer's session timesout.</p> <p>When consuming portlets from an IBM WebSphere producer the producer's session may timeout. When this happens the user will see an error in the portlet(s).</p> <p>Platform: WLP Consumer (all versions) with IBM WebSphere Producer (all versions)</p> <p>Workarounds:</p> <ul style="list-style-type: none"> ■ Set the WebSphere's producer's HTTP Session timeout to sufficiently longer than the WLP's consumers session timeout. This may be 2-4 times longer depending on your users' usage patterns. ■ Logout of the WLP consumer and log back in. ■ Write an interceptor to handle the exception and/or fault.

1.6.7 Collaboration

Table 1–9 lists known limitations and workarounds for collaboration.

Table 1–9 Known Limitations and Workarounds for Collaboration

Problem ID	Description
CR290182	<p>Using external utilities to populate collaboration repository data will cause metadata corruption.</p> <p>The collaboration portlets (Discussion, Tasks, Calendar, etc.) manage a separate database table to track contents of their containers and content repository items. This table can get out of sync when the repository is populated using external tools such as Propagation or Admin Tools. The following symptoms indicate that the table needs to become synchronized with the repository:</p> <ul style="list-style-type: none"> ■ Error message that is logged to the server console: <Error> <Content Collaboration API> <BEA-000000> <[No count metadata could be found for node with id 'XXXX'.]> ■ - Discussions portlet shows inaccurate counts of items within categories and/or forums. <p>Platform: All</p> <p>Workaround: Customers that experience this behavior will be instructed to download a supporting JSP that will synchronize the metadata table with the repository.</p>

1.6.8 Production Operations

Table 1–10 lists known limitations and workarounds for Production Operations.

Table 1–10 Known Limitations and Workarounds for Production Operations

Problem ID	Description
CR217697	<p>The Export/Import Utility provides limited support for localization of portlet instances at an admin level scope.</p> <p>Scoping a book or page with a new locale to the library level is working. When the .pinc is exported/imported in the new locale, the new locale with new title is picked up by the WebLogic Portal Administration Console and L10N tables are updated in the database. However, this is not working for localizing a portlet instance scoped to the admin level. The imported locale is not reflected in the WebLogic Portal Administration Console for the portlet, but the L10N database tables are updated.</p> <p>Platform: All</p> <p>Workaround: Avoid using the admin level of scoping if you want to localize portlet instances.</p>
CR217712	<p>In the Export/Import Utility, locale resource descriptions are not being propagated to the .pinc file.</p> <p>The locale description of a book or page is not getting output to the .pinc file. Thus, an administrator is able to localize only the artifact's title and not its description.</p> <p>Platform: All</p> <p>Workaround: Manually add the locale description after exporting/importing the book or page.</p>
CR217766	<p>In the Export/Import Utility, new resources are not imported correctly when first importing in a foreign locale.</p> <p>For example, if you do not have all your resources localized to a specific locale (for example, "es") and you export a desktop in locale "es", then the resources that do not have a resource (title) in "es" will do a best match algorithm. That best match could be a title in "en" (English)</p> <p>Upon re-import to the destination you are telling the XIP utility that everything is in "es" and therefore it erroneously added 'en' titles in "es".</p> <p>Platform: All</p> <p>Workaround: Make sure all your resources have been localized in the locale you want to export. For example, first re-import the modified .portal file in the default en (English) locale and then import the modified .portal file again in the "es" (Spanish) locale.</p>
CR222321	<p>A placeholder lock is propagated only for the current "page view" of the layout.</p> <p>The Propagation Utility can track only the placeholders of the currently selected layout from the page "view." Due to this, only the locks (set using Entitlements) on the placeholders in the currently selected layout can be propagated. Propagation of locks on other layouts is not possible.</p> <p>Platform: All</p> <p>Workaround: Review propagation results and manually update any necessary placeholder locks.</p>
CR315040	<p>WebLogic Portal Analytics reports for Desktop, Pages, and Portlets with the same title but from different web applications are indistinguishable.</p> <p>Analytic reports do not identify which WebLogic Portal web application sourced a particular usage event. This means that if the same title is used in multiple web application portlets, multiple reports of that title will exist and there is no way to know which web application is associated with each report.</p> <p>Platform: All</p> <p>Workaround: Use unique title names.</p>

Table 1–10 (Cont.) Known Limitations and Workarounds for Production Operations

Problem ID	Description
CR315099	<p>Large Content Exports via Propagation May Throw TimeOutExceptions.</p> <p>When exporting content, if a parent (folder) contains a large number of children (greater than 2000), a <code>weblogic.transaction.internal.TimedOutException</code> can appear.</p> <p>Platform: All</p> <p>Workaround: Reorganize the content data so that a parent does not contain thousands of children. If that is not possible, increase the JTA timeout value from the Weblogic Console from the default 30 seconds to a higher value.</p>
CR339598	<p>Analytic report on a selected web application that has never been accessed shows activities of other non-selected web applications.</p> <p>When multiple web applications in an enterprise application exist and there are activities in all the web applications except one, the Analytics report on the web application that does not have any activities shows results of the all other web applications that do have activity. After the web application is accessed, the Analytics report on the web application shows only its own activities.</p> <p>Platform: All</p> <p>Workaround: Make sure a web application is accessed before selecting it for the Analytics report.</p>
CR345394	<p>ScenarioService error message observed during propagation of content management resources.</p> <p>While propagating content management resources, the following error message may be observed in the console or server log files:</p> <pre><ScenarioService: Error getting user profile wrapper: weblogic></pre> <p>This error is caused by a campaign event firing when a content management resource, such as a node or type, is saved by propagation. The scenario service attempts to fetch the profile of the current user (the propagation user) when it does not exist. Propagation of the content resource should still complete successfully. However, it is likely that the event logic is failing to complete successfully.</p> <p>Platform: All</p> <p>Workaround: Disable event handling during propagation.</p>

1.6.9 WebLogic Portal Administration Console

Table 1–11 lists known limitations and workarounds for WebLogic Portal Administration Console.

Table 1–11 Known Limitations and Workarounds for WebLogic Portal Administration Console

Problem ID	Description
CR259272	<p>User profile update may not be seen by federated portlets.</p> <p>If an administrator updates a user's profile, the user may not see the updates until they log out and log back in. This includes properties sent via WSRP to remote producers.</p> <p>Platform: All</p> <p>Workaround: The user must log out and back in to see the update profile.</p>
CR261581	<p>Changes to a User Profile in Visitor Tools are not displayed in UM Tools.</p> <p>Changes made outside the WebLogic Portal Administration Portal to a user profile in Visitor Tools are not displayed in the WebLogic Portal Administration Console: User Management - User Profile after a refresh. The changes are only displayed after logging out and logging back in.</p> <p>Platform: All</p> <p>Workaround: To see an updated user profile, log out and log back into the WebLogic Portal Administration Portal.</p>
CR264147	<p>Content Management: Cannot clear individual values or properties for nested property types.</p> <p>Nested property types are properties that have the structure of another user-defined type. For nested type properties that allow multiple values, it is not possible to clear individual values (reset them to empty or default values).</p> <p>Platform: All</p> <p>Workaround: To clear an individual value of a multi-valued nested property you must select the multi-valued nested property for edit and then delete the individual value using the trash can icon. You should then add it again with the same name, but with all empty values.</p>
CR288357	<p>IM editors don't support content queries that reference user, request, and session properties.</p> <p>IM editors don't support content queries that reference user, request, session properties.</p> <p>Platform: All</p> <p>Workaround: Use the IDE to edit content queries that reference user, request, session properties.</p>
CR288516	<p>IM editors don't support content expression syntax.</p> <p>IM editors don't support content expression syntax.</p> <p>Platform: All</p> <p>Workaround: Use the IDE to edit content queries that use content expression syntax.</p>
CR297475	<p>IM editors don't support IM rules multiple actions or conditions of the same type.</p> <p>IM editors don't support IM rules multiple actions or conditions of the same type.</p> <p>Platform: All</p> <p>Workaround: Use the IDE to edit IM rules that have multiple actions or conditions.</p>
CR360040	<p>Administration Tools do not use wsrp-consumer-security-config.xml.</p> <p>If you created a wsrp-consumer-security-config.xml in a consumer's WEB-INF directory, Administration tools will not use it when adding or editing producers or when viewing or setting proxy portlet preferences. This may result in incorrectly sending SAML or the following exception:</p> <p>weblogic.xml.crypto.wss.WSSecurityException: Unable to add security token.</p> <p>Platform: All</p> <p>Workaround: Set up your producer to work with the consumer's default configuration.</p>

Table 1–11 (Cont.) Known Limitations and Workarounds for WebLogic Portal Administration Console

Problem ID	Description
CR373718	<p>Portal Administration Console functionality does not work in FireFox 3.</p> <p>Many parts of the Portal Administration Console do not function correctly with FireFox 3. This includes, but is not limited to, pagination in the browse pages and the shortcuts buttons.</p> <p>An error similar to this will show in the Server console:</p> <pre><Jun 25, 2008 10:20:45 AM MDT> <Error> <HTTP> <BEA-101019> <[weblogic.servlet.internal.WebAppServletContext@775b78d5 - appName: 'myApp', name: 'tools', context-path: '/myAppAdmin', spec-version: '2.5'] Servlet failed with IOException weblogic.utils.NestedRuntimeException: Cannot parse POST parameters of request: '/myAppAdmin/xHttpReq'</pre> <p>Workaround: Use FireFox 2 or Internet Explorer</p> <p>Platform: FireFox 3 on all platforms</p>
CR376096	<p>WebLogic Portal Administration Console does not provide a way to re-register if InvalidRegistration is returned by a producer.</p> <p>The WebLogic Portal Administration Console does not provide a way to re-register if InvalidRegistration is returned by a producer.</p> <p>Platform: All</p> <p>Workaround: Delete the producer using the Administration Console and then recreate the producer.</p>
CR376099	<p>No way to modify an invalid registration from the WebLogic Portal Administration Console.</p> <p>If a consumer registers with a producer, and then the producer later requires additional information from the consumer, the producer will return a fault to the consumer. If you try to modify the registration properties for a producer with an invalid registration using the Administration Console, you receive an error and stack dump from whatever fault was returned by the producer.</p> <p>Platform: All</p> <p>Workaround: Delete the producer using the Administration Console or, manually delete the producer from the wsrp-producer-registry.xml file and then manually recreate a new producer entry.</p>
CR377848	<p>The WebLogic Portal Administration Console displays the Add/Delete portlet preference for non-WLP producers.</p> <p>The Administration Console displays UI for adding and deleting portlet preferences for remote WSRP producers. However, non-WLP WSRP producers generally have no way of supporting this functionality.</p> <p>Platform: All</p> <p>Workaround: WLP PAT users shouldn't try to add or remove portlet preferences from non-wlp remote wsrp portlets.</p>
9376586	<p>Unable to set preferences on portlets via the Portal Administration Console.</p> <p>On IBM platforms, you might encounter a NullPointerException when navigating to the Portlet Preferences page.</p> <p>Platforms: IBM (zLinux, AIX)</p> <p>Workaround: Contact Oracle Support for patch L4JD</p>

1.7 Known WebLogic Server and Platform Limitations

This section lists WebLogic Server (WLS) and other platform limitations.

Table 1–12 Known WLS and Platform Limitations

9270480	<p>WLP Domains created with Configuration Wizard provides wrong JDBC Pool test table names</p> <p>For certain databases, WLP domains created with Configuration Wizard will generate the wrong JDBC Pool test table name in the <code>config/jdbc/datasource.xml</code> configuration files.</p> <p>A non-fatal JDBC <Error> will be logged prior to the server reaching a RUNNING state.</p> <p>Workaround: Change the connection test sql clause in the server console as follows:</p> <ol style="list-style-type: none"> 1. After the server is started login to the server console. 2. In the "domain structure" panel go to <code>domain_name/services/JDBC/DataSources</code> 3. Click each data source name, then the "connection pool" tab, and then "Advance" at the bottom of the page. 4. In the "Test Table Name" text box changed the sql clause according to the type of db: <ul style="list-style-type: none"> Oracle: SQL SELECT 1 FROM DUAL DB2: SQL SELECT COUNT(*) FROM SYSIBM.SYSTABLES MS SQL Server: SQL SELECT COUNT(*) FROM sysobjects Sybase: SQL SELECT COUNT(*) FROM sysobjects My Sql: SQL SELECT 1 Pointbase: No change. 5. Save the changes. No server restart is needed.
9215828 (Base Bug) 9223874	<p>After upgrading to WLP 10.3.2, server fails to start and displays security error.</p> <p>After upgrading to WLP 10.3.2, server fails to start and displays security error that the Keystore provider does not exist.</p> <p>Platform: All</p> <p>Workaround: None. Please request a patch for WLS Bug 9223874.</p>
8180471	See 8086654

1.8 Key Limitations Fixed in WebLogic Portal

This section lists limitations that were fixed in WebLogic Portal. See [Table 1–13](#).

Table 1–13 Key Limitations in WebLogic Portal

Problem ID	Description
8429934	Using single quotes in an "img" tag caused the hostname and port to be appended. This has been corrected.
8847724	The expand/collapse function of the Discussion Portlet list of Categories was not working properly. This has been corrected.
8844872	When performing a search in the Discussion Forum portlet and the user refreshes the browser, an error occurred. This has been corrected.
8823370	An "Error getting item (stub)..." exception was thrown when adding a Discussion Forum in a GroupSpace Community. This has been corrected.
8979750	Validation to detect a Discussion Topic name that is too long was bypassed when that Topic was first created in a GroupSpace Community. This has been corrected.

Table 1–13 (Cont.) Key Limitations in WebLogic Portal

Problem ID	Description
8979736	Validation to detect a duplicate Discussion Topic name was bypassed when that Topic was first created in a GroupSpace Community. This has been corrected.
8893093	Validation to detect a Discussion Topic name containing a forward slash or a backslash was bypassed when that Topic was first created in a GroupSpace Community. This has been corrected.
8823372	A validation error ("There has been an issue with creating a Topic with this name...") occurs when adding a Discussion Topic in a GroupSpace Community. This has been corrected.
8874716	ANPE exception was raised when accessing a topic with no details in the groupSpace community. The issue occurred when any database other than pointbase was used for holding wlp repositories Fixed the issue where a NullPointerException was raised when accessing a Discussion Topic with no details in a GroupSpace Community. The issue only occurred when using a database other than Pointbase for the WLP Repository.
8621563	During propagation of content selectors the "commit" task failed when the ear is deployed on the destination saying a dependency (content type) needs to be manually added because it is out of scope in the export, even though the dependency content type was present on the destination. This has been corrected.
8360597	
8305673	When more than one admin user deletes a portlet off the same page at the same time, the portlets that were not deleted appear twice on the page. This was corrected so the second user to make the update will now receive an ObjectNotFoundException.
8174970	An unsynchronized WeakHashMap was identified that could potentially lead to stuck threads. This has been corrected.
8195610	The content tree rendering in PAT is very slow when there are delegated admin roles assigned to the contents nodes. This has been improved.
8996257	Contains and ends with search expressions do not work for most providers except the SQLAuthenticator. Those options have been removed.
8607081	Improved performance of entitlements by implementing a P13n request-scoped role cache, eliminating excessive calls to getProperty(). Entitlement checks on Portal Admin Tool resources will now result in a given role being evaluated only once per request; subsequent evaluations of the role during the request will get the cached result.
8176554	An unsynchronized WeakHashMap was identified that could potentially lead to stuck threads. This has been corrected.
8714297	When the portlet being rendered is async enabled (isAsyncContent) and portlet to be displayed in full (contentOnly=false) with custom parameter defined using netui:parameter, then the custom parameter read using API org.apache.beehive.netui.pageflow.scoping.ScopedServletUtils.getOuterRequest(request).getParameter() was always returning NULL. This has been corrected.
9073459	There is a potential issue with Async portlets where they could return entire page mark-up instead of only the affected portlet. This has been corrected.
8304752	Deleting nested content objects that contain non-multi-valued string resulted in an erroneous content structure. This has been corrected.
8340100	Deleting multi-valued nested content objects that contain 11 or more items resulted in an erroneous content structure. This has been corrected.
8248491	Using IE6 with pages containing iemenu.js IFRAME, the Bighorn Look and Feel with SSL popped up a warning: "This page contains both secure and nonsecure items. Do you want to display the nonsecure items?" This has been corrected.
8248500	Portlet Definition retrieval is now more efficient.

Table 1–13 (Cont.) Key Limitations in WebLogic Portal

Problem ID	Description
8176909	A problem with production redeployment of portal applications hanging has been resolved.
8873823	If a user has a WLP delegated administration role, the user can perform administrative tasks in a GroupSpace portal application.
8702463	The lock placeholder checkbox on a desktop page, which is inherited from the library page when selected, is now disabled when the parent library page checkbox is selected.
8594381	With many WLP DA Roles defined, managing the roles can be slow in the Portal Admin Tools web app. A cache was added to improve performance.
8429708	Improved WSRP performance when proxy portlets are rendered by caching consumer registration property Values.
8274952	In a JSR-168 portlet, <code>RenderResponse.encodeURL(String)</code> will return a secure URL when the request scheme is secure.
8673649	Error messages similar to "ORA-00001: unique constraint (X.PK_LEASE) violated" are benign and will no longer be written to the server logs.
8175978	When creating a portlet, an error occurred if special characters were used in the Portlet title. This has been corrected.
8185869	When using Workshop to install plugins, an exception occurred indicating a required feature was not present. This has been corrected.
8195739	8185869
8409224	Timestamp on <code>SessionEndEvent</code> events was incorrect. This has been corrected.
8175463	Validation for the "netui:select" tag was not invoked when using async This has been corrected.
8531409	Improved performance of WSRP proxy portlet initialization.
8206094	After failover when load balancing federated portlets in a cluster, empty markup was returned, causing user profile information on the first authenticated request to the producer to be lost until the browser was refreshed. This has been corrected.
8513109	Versioned Portal apps having a pageflow action failed to deploy to WLS due to a <code>NullPointerException</code> . This has been corrected.
8431729	Reduced memory consumption on the consumer when a very large number of proxy portlets are deployed.
8535369	When setting an upper case mime header in an Interceptor, the Producer receives the header name in lower case. This has been corrected.
8196586	For a standalone pageflow portlet with a form that submits a POST request to a pageflow action, the response is a 404 error. This has been corrected.
8177447	A <code>ClassNotFoundException</code> "Unable to deserialize event payload.." WARNING-level message occurs; when using WSRP this warning can be ignored since the consumer may not be able to deserialize by design, lacking a local version of the payload class. To suppress these messages, set the system property <code>com.bea.netuix.events.internal.EventInternal.suppress=true</code> . Note: this turns off the WARNING in all cases, not just WSRP.
8415208	
8446764	Added more robust date comparison for determining WSRP cookie validity.
8466272	An <code>IndexOutOfBoundsException</code> occurred when using a WSRP transport mode of "attachment" for a JSF Facelets consumer with a small page size. This has been corrected.
8483669	Improved WSRP proxy portlet initialization by caching additional JNDI lookups.

Table 1–13 (Cont.) Key Limitations in WebLogic Portal

Problem ID	Description
8719222	When a streaming desktop with async mode enabled contains a JSP portlet with an anchor tag text that starts with "www.", the anchor displays incorrectly in Internet Explorer. This has been corrected.
8658398	A page definition label of exactly 39 characters was being incorrectly identified as a duplicate when replacing portal resources. This has been corrected.
8832977	When two managed servers were deployed on the same physical machine the WSDL URL necessary to use the local proxy mode used "localhost" as the machine name, but pointing to a specific port would permanently pin both consumers to the same producer instance. This has been corrected. To enter a WSDL URL which will pin the consumer to the producer on the same managed server, add a URL like: http:<lb host>:<lb port>/<producer web-app>/producer?WSDL&wsrp-forceLocalProxy=true.
9002210	A cookie parsing error ("Unable to parse the cookie string for the attribute...") sometimes occurred using portlet publishing. This has been corrected.
9050931	The producer sometimes threw a warning: "<Warning> <WSRP-Consumer> <BEA-420769> <[consumerWeb] Unable to release sessions on producer [producer_account] due to [Unknown]. Ignoring those sessions.>". This has been corrected.
8793111	When moving portlets to the bottom position in a placeholder, the new placement was not correctly persisted. This has been corrected.
8491408	Unexpected behavior sometimes occurred when using an asynchronous desktop with DVT and DISC enabled; symptoms included minimize operations that minimized the wrong portlet, or drag and drop operations that dropped a portlet into another portlet's markup div instead of into a placeholder div. This has been corrected.
8175968	Resolved an issue where a ConcurrentModificationException occurred under load when running several forked portlets for both pre-render and render forking.
8191582	When using remote Struts or PageFlow portlets, the wsrp-NavigationalState could grow large due to the retaining of unnecessary parameters. This has been corrected.
9036901	
8340674	When rendering a desktop that contains remote (WSRP) portlets, a performance improvement was made by bypassing a SQL query that occurred for each portlet.
8987269	When using the DVT with Asynchronous mode enabled, a portlet delete operation could lead to an hour glass mouse icon that blocks further UI usage. This has been corrected.
8686206	During the process of creating a new Book in the Portal Admin Console, the cancel button does not function properly. This has been corrected.
8739768	When viewing Entitlement Role details, descriptions were not being displayed for users and/or groups that are contained in the Role. This has been corrected.
8686158	When viewing a list of Entitlement Roles, the descriptions were not being displayed. This has been corrected.
8760254	In certain situations, one could not create a new Book in the Portal Admin console. This has been corrected.
8686249	WLP Admin Console was incorrectly "No Content" for children of a folder in certain situations. This has been corrected.
8686369	Filtering of Books was not functioning properly under certain conditions. This has been corrected.
8446872	In IE7 and later, the WYSIWYG editor was problematic when the primary language is German. This has been corrected.
8180435	When deleting multi-valued, nested property entries on a content item the Portal Admin Tool, the data structure displayed for the saved value corrupted. This has been corrected.

Table 1–13 (Cont.) Key Limitations in WebLogic Portal

Problem ID	Description
8157191	An UnresolvableForwardException was thrown when attempting to perform create/update/delete operations on a read-only repository. These options no longer appear for a read-only repository.
8162132	When Multi-valued restricted and unrestricted content items are edited, they show the default value even if it was not selected when the content was created. This has been corrected.
8766603	">" was not handled properly by the Content Management WYSIWYG editor. This has been corrected.
8737125	A NullPointerException was thrown in the Portal Admin Tool when viewing the delegated administrators for a content node if a role policy was not found. This has been corrected.
8180910	Description attributes were not allowed for Books and Pages in a .portal file; this caused these attributes to be blanked out in updates to desktops based on the .portal file. This has been corrected. There is now a Description attribute available in the IDE for both Books and Pages. The value of this attribute is used when updating desktops based on the .portal file, just like Title.
8176453	An exception was thrown in the Portal Admin Tool whenever a problem occurred using the cursor to read Groups, and no Groups would be This has been corrected. Problems are now logged, and whatever Groups were obtained will be displayed.
8662507	Fixed the issue where the parent page did not refresh automatically to reflect the changes made after saving the changes in visitor tools
8239587	Using Internet Explorer file download, "http://hostname:port" was added to tags after editing the HTML file with the WSYIWYG editor. This has been corrected.
8676367	An IE-specific bug in the Portal Admin Tool at the Page contents editor caused the portlet panels to remain in a fixed position while scrolling the page. This has been corrected.
8312544	Delegated Admins could not edit the properties of content Types because the Edit buttons were not displayed at the details page even though the user had been granted appropriate permission. This has been corrected.
8826058	General performance improvements to the UCM SPI.
8807492	Enable caching of "null" service requests.
8182353	
8553434	Performance was improved when displaying the node summary page for a content node that has a very large number of other nodes linked to it.
8201975	When using an Oracle database, a "java.sql.BatchUpdateException: ORA-12899: value too large for column" was thrown when adding text containing multibyte characters to a content property. This has been corrected.
8325092	Improved performance of content selector queries that use "likes" and "contains" clauses.
8176765	
8792427	Performance improvement to UCM SPI. Enables fine-grained locking when a user connects to UCM via the VCR.
8822624	Improves concurrency of the UCM SPI in multi-user, high volume situations. This has been corrected.
9094006	Due to a rare race condition, an UnsupportedRepositoryOperationException sporadically occurred. This has been corrected.

Table 1–13 (Cont.) Key Limitations in WebLogic Portal

Problem ID	Description
8595668	Updating a binary property in a file system repository caused the property data to become inaccessible. This has been corrected.
8612974	Under certain conditions, a NullPointerException could occur after deleting and then re-adding nested content. This has been corrected.
8519707	With library services are enabled, copying content that has a multi-valued nested binary property from one folder to another using the WYSIWYG editor resulted in an UnresolvableForwardException. This has been corrected.

