

Agile

Version e6.1

ORACLE

Oracle® Agile Engineering Data Management

Installation Manual for Agile e6.1.1 Clients on
Windows

Part No. E15605-01

August 2009

Copyright and Trademarks

Copyright © 1995, 2009, Oracle and/or its affiliates. All rights reserved.

This software and related documentation are provided under a license agreement containing restrictions on use and disclosure and are protected by intellectual property laws. Except as expressly permitted in your license agreement or allowed by law, you may not use, copy, reproduce, translate, broadcast, modify, license, transmit, distribute, exhibit, perform, publish or display any part, in any form, or by any means. Reverse engineering, disassembly, or decompilation of this software, unless required by law for interoperability, is prohibited.

The information contained herein is subject to change without notice and is not warranted to be error-free. If you find any errors, please report them to us in writing.

If this software or related documentation is delivered to the U.S. Government or anyone licensing it on behalf of the U.S. Government, the following notice is applicable:

U.S. GOVERNMENT RIGHTS

Programs, software, databases, and related documentation and technical data delivered to U.S. Government customers are "commercial computer software" or "commercial technical data" pursuant to the applicable Federal Acquisition Regulation and agency-specific supplemental regulations. As such, the use, duplication, disclosure, modification, and adaptation shall be subject to the restrictions and license terms set forth in the applicable Government contract, and, to the extent applicable by the terms of the Government contract, the additional rights set forth in FAR 52.227-19, Commercial Computer Software License (December 2007). Oracle USA, Inc., 500 Oracle Parkway, Redwood City, CA 94065.

This software is developed for general use in a variety of information management applications. It is not developed or intended for use in any inherently dangerous applications, including applications which may create a risk of personal injury. If you use this software in dangerous applications, then you shall be responsible to take all appropriate fail-safe, backup, redundancy and other measures to ensure the safe use of this software. Oracle Corporation and its affiliates disclaim any liability for any damages caused by use of this software in dangerous applications.

Oracle is a registered trademark of Oracle Corporation and/or its affiliates. Other names may be trademarks of their respective owners.

This software and documentation may provide access to or information on content, products and services from third parties. Oracle Corporation and its affiliates are not responsible for and expressly disclaim all warranties of any kind with respect to third party content, products and services. Oracle Corporation and its affiliates will not be responsible for any loss, costs, or damages incurred due to your access to or use of third party content, products or services.

CONTENTS

Copyright and Trademarks.....	iii
Preface	v
Introduction.....	1
Where to Go for More Information.....	1
Preparing the Installation.....	3
Requirements	3
Requirements for Office Suite Installation	3
Parallel Installation of Agile e6.x and Agile e6.1.1 Windows Clients	4
Installation with the Installer.....	5
Installation	5
Enable Trace	8
Silent Installation	9
Windows Client.....	9
Java Client.....	9
Office Suite.....	10
Web Start	11
Web Start for Java Client Installation	11
Web Start for Office Suite Installation	12
Workflow Editor Connection Settings.....	17
Uninstall the Clients and Office Suite	19

Preface

The Oracle documentation set includes Adobe® Acrobat™ PDF files. The [Oracle Technology Network \(OTN\) Web site](http://www.oracle.com/technology/documentation/agile.html) (<http://www.oracle.com/technology/documentation/agile.html>) contains the latest versions of the Oracle Agile EDM PDF files. You can view or download these manuals from the Web site, or you can ask your Agile administrator if there is an Oracle Documentation folder available on your network from which you can access the documentation (PDF) files.

Note To read the PDF files, you must use the free Adobe Acrobat Reader™ version 7.0 or later. This program can be downloaded from the [Adobe Web site](http://www.adobe.com) (<http://www.adobe.com>).

Note Before calling Agile Support about a problem with an Oracle Agile EDM manual, please have the full part number ready, which is located on the title page.

TTY Access to Oracle Support Services

Oracle provides dedicated Text Telephone (TTY) access to Oracle Support Services within the United States of America 24 hours a day, 7 days a week. For TTY support, call 800.446.2398. Outside the United States, call +1.407.458.2479.

Readme

Any last-minute information about Oracle Agile EDM can be found in the Release Notes file on the [Oracle Technology Network \(OTN\) Web site](http://www.oracle.com/technology/documentation/agile_eseries.html) (http://www.oracle.com/technology/documentation/agile_eseries.html)

Agile Training Aids

Go to the [Oracle University Web page](http://www.oracle.com/education/chooser/selectcountry_new.html) (http://www.oracle.com/education/chooser/selectcountry_new.html) for more information on Agile Training offerings.

Accessibility of Code Examples in Documentation

Screen readers may not always correctly read the code examples in this document. The conventions for writing code require that closing braces should appear on an otherwise empty line; however, some screen readers may not always read a line of text that consists solely of a bracket or brace.

Accessibility of Links to External Web Sites in Documentation

This documentation may contain links to Web sites of other companies or organizations that Oracle does not own or control. Oracle neither evaluates nor makes any representations regarding the accessibility of these Web sites.

Introduction

This guide describes how to install the Agile e6.1.1 Windows Client (also known as the PC Client), the Agile e6.1.1 Java Client, and the Office Suite on a computer running Microsoft Windows 2003, or Windows XP with Microsoft Office 2003, or Microsoft Office 2007 installed.

Note A comprehensive list of supported operating systems can be found in the Prerequisites guide.

The Agile e6.1.1 installation program allows installing the following Agile e6.1.1 components:

- Windows Client
- Office Suite
- Java Client

Where to Go for More Information

Please refer to the Administration Manual for Agile e6.1.1 for more information about how to use the Java Client with WebStart.

After the Client is installed, it should be able to connect to a running Agile e6 Server. For information on installing the Agile e6 Server, refer to one of the following documents:

- Installation Manual for Agile e6 Server on Windows— for installing a PLM Server that runs under Windows and uses an Oracle 11g database system.
- Installation Manual for Agile e6 Server on UNIX— for installing a PLM Server that runs under UNIX and uses an Oracle 11g database system

Consult Oracle Support for Agile for further information on installing other Agile e6.1.1 components and optimizing your system with the components.

Preparing the Installation

Requirements

Note A complete list of all requirements can be found in the document Prerequisites Guide for Agile e6.1.1 including Pre-Installation Checklist.

Before starting the installation, do the following:

1. Open the Windows Control Panel.
2. Open System.
3. Open the Advanced tab.
4. Click on Environmental Variables
5. The environment variable JAVA_HOME needs to be set to the path where the Java Runtime Environment is installed.
6. JAVA_HOME has to point to a 32 bit Java5 or Java6 JRE installation

Note This can be done during the installation of the Agile e6.1.1 Client Software.

Requirements for Office Suite Installation

Note Further information about the manual installation of (KB908002) can be found in the Silent Installation section.

Note KB907417, KB908002, and KB908002 will be installed automatically with the Installer.

- Office Suite for Microsoft Office 2003:
 - Microsoft Office 2003
 - Microsoft Office 2003 Primary Interop Assemblies (PIA)
 - Microsoft Office 2003 Update (KB907417)
 - Microsoft .NET Framework 2.0
 - Shared Add-in Support Update for Microsoft .NET Framework 2.0 (KB908002)
 - Shared Add-in Extensibility Update for Microsoft .NET Framework 2.0 (KB908002)
- Office Suite for Microsoft Office 2007
 - Microsoft Office 2007
 - Microsoft Office 2007 Primary Interop Assemblies (PIA)
 - Microsoft .NET Framework 2.0
 - Shared Add-in Support Update for Microsoft .NET Framework 2.0 (KB908002)

- Shared Add-in Extensibility Update for Microsoft .NET Framework 2.0 (KB908002)
- Microsoft .NET Framework 3.0

Note If the requirements are not met, the Office Suite installation will be canceled.

- Hot Fixes
 - Microsoft Office 2003 Update (KB907417)
 - Shared Add-in Support Update for Microsoft .NET Framework 2.0 (KB908002)
 - Shared Add-in Extensibility Update for Microsoft .NET Framework 2.0 (KB908002)

Parallel Installation of Agile e6.x and Agile e6.1.1 Windows Clients

To install Agile e6.x and Agile e6.1.1 client in parallel on the same machine, it is required to use separate client settings (profiles) for each version. Before installing the Agile e6.1.1 client, rename the settings _Default and _Large because the next installation will change these settings. The installation can be done by using the Agile e6 (or e6.1) client setup dialog. After the parallel installation each client version must be started using the corresponding settings.

Note The Office Suite feature of Agile e5.1 and/or Agile e6 cannot be installed parallel to Agile e6.1.1 on the same machine.

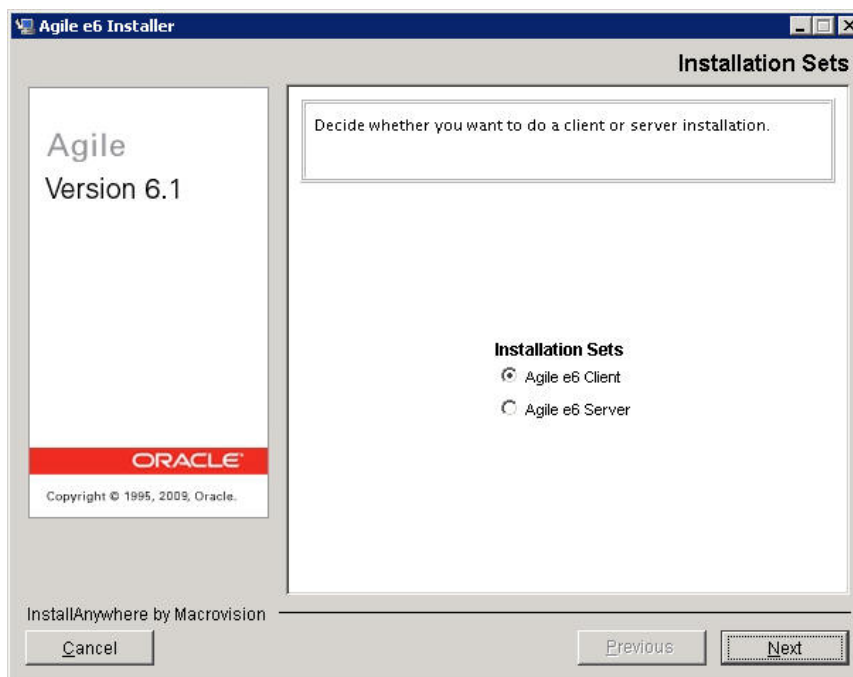
Installation with the Installer

Installation

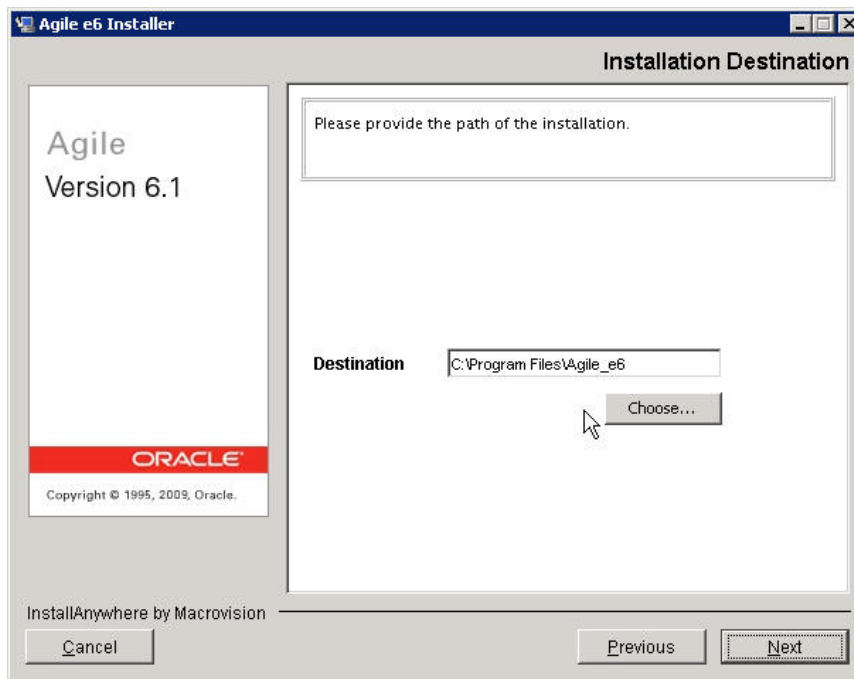
1. Extract the downloaded installation file.
2. Change to the Installer directory ...\installer.
3. Execute "gui.cmd".

The Installation Sets mask is opened.

Note The Installer allows installing the Windows client, the Java client, and the Office Suite at once.



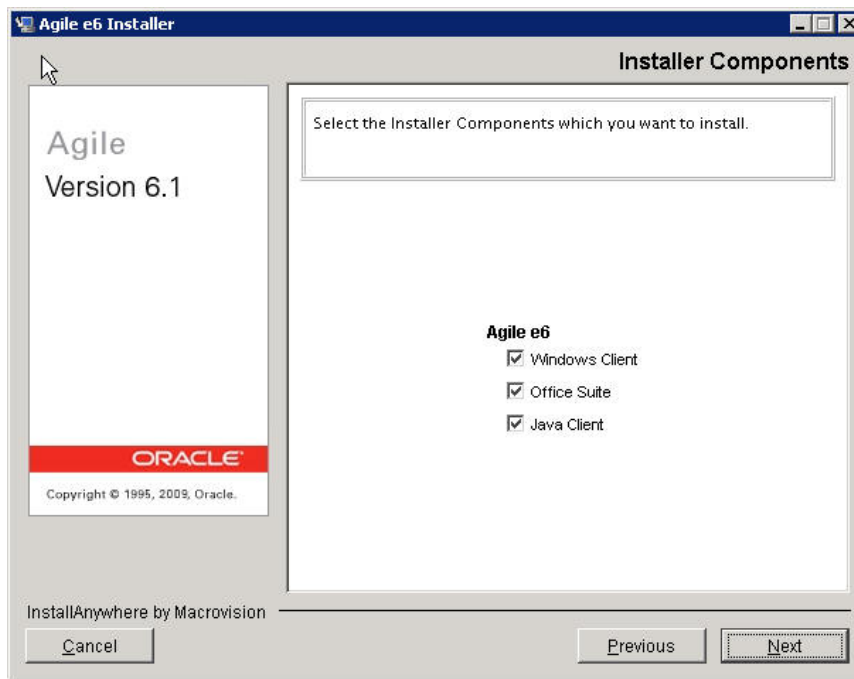
4. Select the Agile e6 Client installation and click "Next".
The Installation Destination mask is opened.



5. Enter the installation path where the Agile e6.1.1 Windows clients should be installed and click "Next".

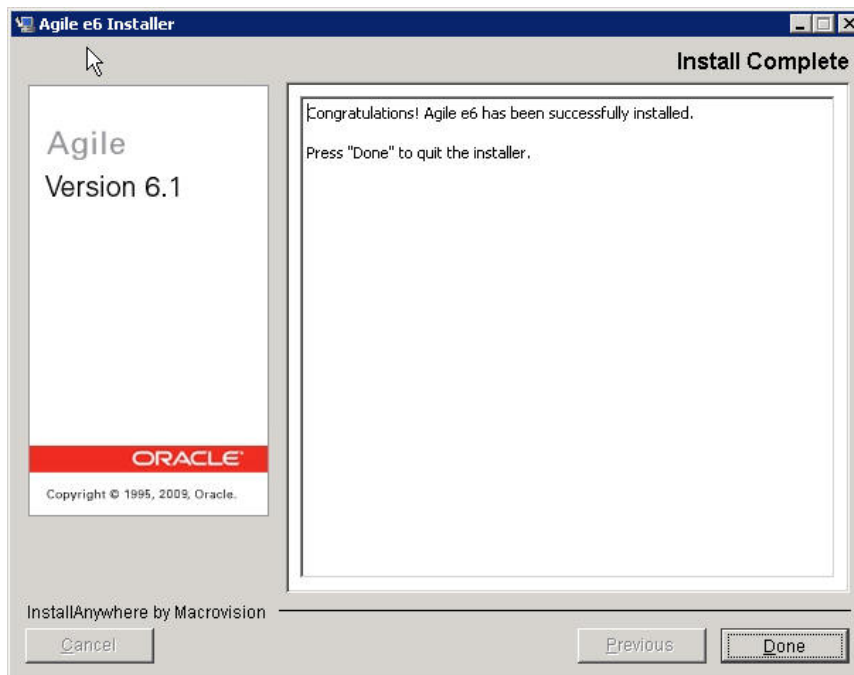
Note The installation destination is the root path to install the Agile e6.1.1 Windows clients. This either has to be a non existing path or an empty directory. For every client a separate subdirectory is created under this path.

The Installer Components mask is opened.



Note The installation process is the same for all components.

6. Select the components to be installed and click “Next”.
The installation is completed.



7. Click “Done” to exit the Installer.

Enable Trace

If you want to have detailed trace messages for your GUI installation, the following environment variables have to be set for Windows:

- set plm_ant_loglevel=3
- set plm_ia_stderr=C:\temp\iastderr.log
- set plm_ia_stdout=C:\temp\iastdout.log

Note Make sure that the directory where the trace file should be stored in is available.

Chapter 4

Silent Installation

The installation tool uses the automatic installation feature of the Windows installer (msiexec). The silent installation can be executed for the Windows client, Java client, and the Office Suite.

The silent installation can be executed with the msiexec command.

The following table explains the different msiexec variables.

msiexec Variable	Description
/qb	Reduces the graphical interface to show only the progress bar during the installation with msi
/i name.msi	Installation for the respective name of the client
ALLUSERS=2	Default for a pre-machine installation
TARGETDIR="C:\Program Files\Oracle\Agile xxx Client"	Target path for the installation
JAVA_HOME="C:\Program Files\Java\jre1.5.0_16"	Path to the installed Java JRE
DISABLEADVTSHORTCUTS=1	Allows modification of the Target field in the Properties of the shortcut link for the Windows and Java client

Windows Client

1. Unpack <installation_package_root>\packages\intel-ms-nt5.0\clientwindowsmsi.zip.

The file DtvClient.msi can be found in the directory axalant\bin\intel-ms-nt5.0.

2. Execute the silent installation for the Windows client:

Example:

```
msiexec /qb /i DtvClient.msi ALLUSERS=2 JAVA_HOME="C:\Program
Files\Java\jre1.5.0_16" TARGETDIR="C:\Program Files\Oracle\Agile
Windows Client"
```

Java Client

1. Unpack <installation_package_root>\packages\intel-ms-nt5.0\clientjavamsi.zip.

The file JavaClient.msi can be found in the directory axalant\bin\intel-ms-nt5.0.

2. Execute the silent installation for the Java client:

Example:

```
msiexec /qb /i JavaClient.msi ALLUSERS=2 JAVA_HOME="C:\Program
Files\Java\jre1.5.0_16" TARGETDIR="C:\Program Files\Oracle\Agile Java
Client"
```

Office Suite

Silent Installation for Office 2003

1. Unpack <installation_package_root>\packages\intel-ms-nt5.0\officesuite2003.zip.
The file GDMAAddin2003Setup.msi can be found in the directory axalant\bin\intel-ms-nt5.0\office2003.
2. Install Microsoft Office 2003 Update (KB907417)
office2003-kb907417sfxcab-ENU.exe
3. Install shared add-in support update for Microsoft .NET Framework 2.0 (KB908002)
msiexec /qb /i lockbackRegKey.msi ALLUSERS=2
4. Install shared add-in extensibility update for Microsoft .NET Framework 2.0 (KB908002)
msiexec /qb /i extensibilityMSM.msi ALLUSERS=2
5. Execute the silent installation for Office 2003:
Example:
msiexec /qb /i GDMAAddin2003Setup.msi ALLUSERS=2 TARGETDIR="C:\Program Files\Agile_e6\Office Suite"

Silent Installation for Office 2007

1. Unpack <installation_package_root>\packages\intel-ms-nt5.0\officesuite2007.zip.
The file GDMAAddin2007Setup.msi can be found in the directory axalant\bin\intel-ms-nt5.0\office2007.
2. Install shared add-in support update for Microsoft .NET Framework 2.0 (KB908002)
msiexec /qb /i lockbackRegKey.msi ALLUSERS=2
3. Install shared add-in extensibility update for Microsoft .NET Framework 2.0 (KB908002)
msiexec /qb /i extensibilityMSM.msi ALLUSERS=2
4. Execute the silent installation for Office 2007:
Example:
msiexec /qb /i GDMAAddin2007Setup.msi ALLUSERS=2 TARGETDIR="C:\Program Files\Agile_e6\Office Suite"

Note The installation tool checks all prerequisites, except the Microsoft Office application.

Note Hotfixes need to be installed manually. These files are part of the Office Suite installation zip file (<installationspaket_root\packages\intel-ms-nt5\officesuite200x.zip).

Note Only the installation progress bar is displayed during the installation.

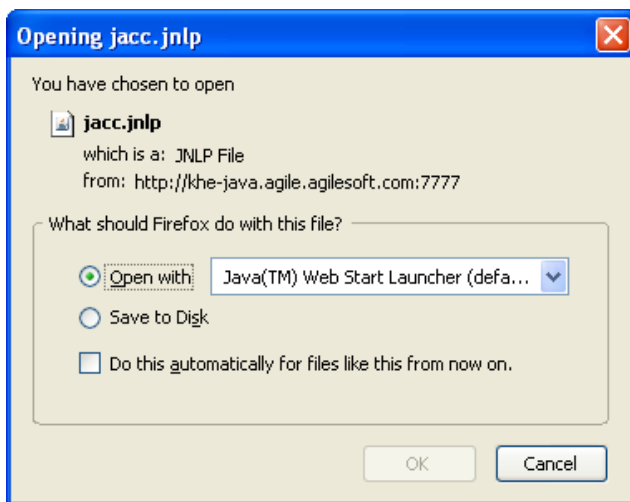
Chapter 5

Web Start

Web Start for Java Client Installation

1. To start the Java Client installation via the web start, enter the following into the address bar:
e.g.: <http://example.com:7777/Jaccyin/jacc.jnlp>

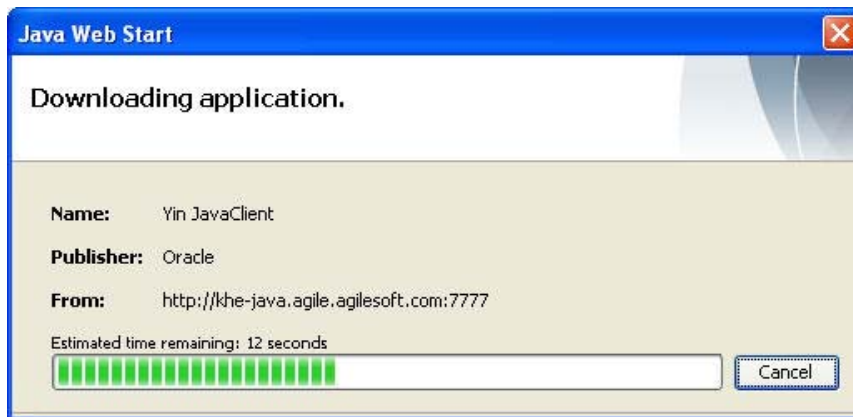
Note “example.com:7777” is the application server name, and yin the installation name given during the Server installation.



2. Click OK.

The Downloading application window is opened.

Note This window is opened only for the first download.



3. The application is opened and the connection details have to be entered.

Web Start for Office Suite Installation

Note The installation tool checks all requirements (including the hotfixes), except the Microsoft Office application. If no Microsoft Office application is installed, the Office Suite installation will be canceled.

Note A power user is required for this installation.

1. To start the Office Suite installation via the web start enter the following into the address bar:
e.g.: <http://example.com:8600/OfficeSuiteInstall2003>

Note "example.com:8600" is the application server name given during the Server installation.

The Welcome to the Agile e6.1.1 Office Suite for Microsoft Office xxxx Setup Wizard window is opened.



2. Click Next.

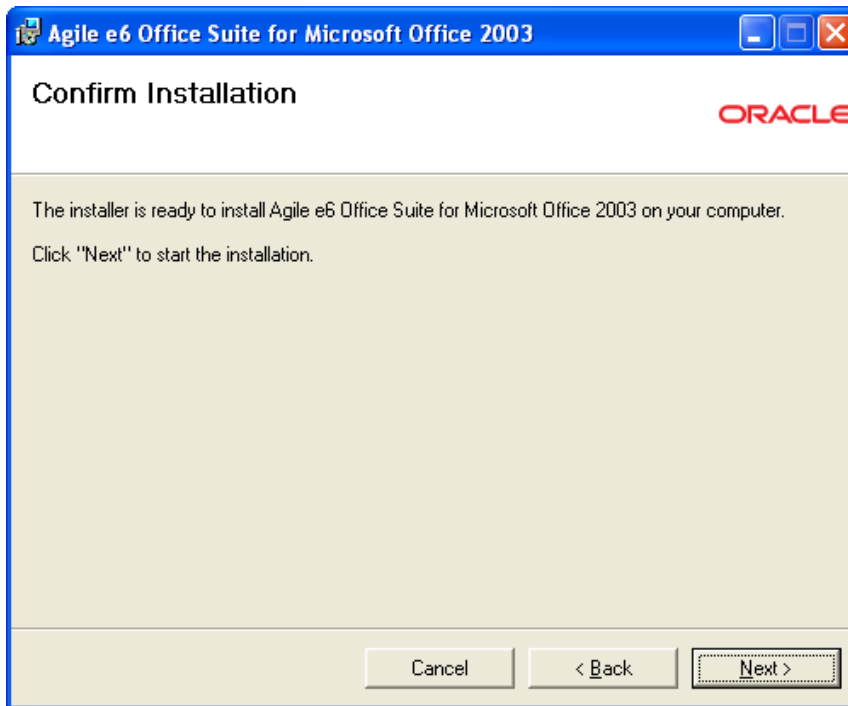
The Select Installation Folder window is opened.



3. Enter the installation path where the Agile e6.1.1 Office Suite should be installed and click

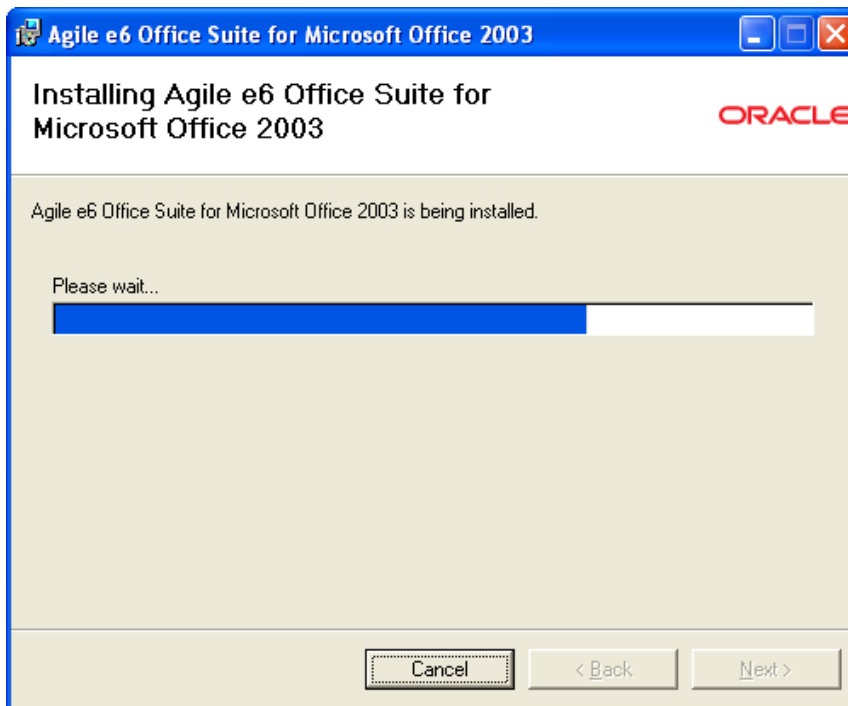
“Next”.

The Confirm Installation window is opened.



4. Click Next.

The installation is carried out.



5. After the installation, the Installation Complete window is opened.
6. To exit the installation wizard, click Close.



Workflow Editor Connection Settings

The workflow editor connects via the Windows client or Java client to the PLM server. Therefore, the Windows client always has to be started using the ECI-TOPIC parameter if you want to use the workflow editor (-p ECI-TOPIC:t:1:h:localhost:r:12349). Otherwise, the following message is displayed:

```
"Could not read ECI-TOPIC from client environment Make sure that ECI-TOPIC has syntax 't:transportmode:h:hostname:r:portnumber'
```

For transport mode only tcpip-connection (=1) is allowed.

Note The TCP port number 12349 is randomly selectable and has to be free.

Note Every client on a PC has to have its own TCP port number.

Note The ECI-TOPIC parameter does not need to be set for the Java client.

How to set the Connection Setting:

1. Open the directory of your installation.
2. Open ...\\Windows Client\\axalant\\cmd.
3. Create a copy of the file plm.cmd and rename it.
4. Edit the file and add the parameter "-p ECI-TOPIC:t:1:h:localhost:r:12349" at the end of the following line:

```
start "Windows Native Client"  
"%ep_root%\axalant\bin\%EP_MACH%\dtv_cli.exe" %*
```

e.g.

```
start "Windows Native Client"  
"%ep_root%\axalant\bin\%EP_MACH%\dtv_cli.exe" %* -p ECI-  
TOPIC:t:1:h:localhost:r:12349
```


Chapter 7

Uninstall the Clients and Office Suite

To uninstall (remove) the clients and/or the Office Suite, use the standard Microsoft Windows Add or Remove Programs application.

