

Agile

Version e6.1

ORACLE

Oracle® Agile Engineering Data Management

Installation Manual for Agile e6.1.1 Server on UNIX

Part No. E15614-01

August 2009

Copyright and Trademarks

Copyright © 1995, 2009, Oracle and/or its affiliates. All rights reserved.

This software and related documentation are provided under a license agreement containing restrictions on use and disclosure and are protected by intellectual property laws. Except as expressly permitted in your license agreement or allowed by law, you may not use, copy, reproduce, translate, broadcast, modify, license, transmit, distribute, exhibit, perform, publish or display any part, in any form, or by any means. Reverse engineering, disassembly, or decompilation of this software, unless required by law for interoperability, is prohibited.

The information contained herein is subject to change without notice and is not warranted to be error-free. If you find any errors, please report them to us in writing.

If this software or related documentation is delivered to the U.S. Government or anyone licensing it on behalf of the U.S. Government, the following notice is applicable:

U.S. GOVERNMENT RIGHTS

Programs, software, databases, and related documentation and technical data delivered to U.S. Government customers are "commercial computer software" or "commercial technical data" pursuant to the applicable Federal Acquisition Regulation and agency-specific supplemental regulations. As such, the use, duplication, disclosure, modification, and adaptation shall be subject to the restrictions and license terms set forth in the applicable Government contract, and, to the extent applicable by the terms of the Government contract, the additional rights set forth in FAR 52.227-19, Commercial Computer Software License (December 2007). Oracle USA, Inc., 500 Oracle Parkway, Redwood City, CA 94065.

This software is developed for general use in a variety of information management applications. It is not developed or intended for use in any inherently dangerous applications, including applications which may create a risk of personal injury. If you use this software in dangerous applications, then you shall be responsible to take all appropriate fail-safe, backup, redundancy and other measures to ensure the safe use of this software. Oracle Corporation and its affiliates disclaim any liability for any damages caused by use of this software in dangerous applications.

Oracle is a registered trademark of Oracle Corporation and/or its affiliates. Other names may be trademarks of their respective owners.

This software and documentation may provide access to or information on content, products and services from third parties. Oracle Corporation and its affiliates are not responsible for and expressly disclaim all warranties of any kind with respect to third party content, products and services. Oracle Corporation and its affiliates will not be responsible for any loss, costs, or damages incurred due to your access to or use of third party content, products or services.

CONTENTS

Copyright and Trademarks.....	iii
Preface	v
Introduction.....	1
Where to Go for More Information.....	1
Preparing the Installation.....	3
Requirements	3
Installation with the Installer.....	5
Installation with GUI	5
Batch Installation	11
Enable Trace (optional)	13
Fileserver Installation.....	15
Verify the Installation.....	17
Uninstall	19

Preface

The Oracle documentation set includes Adobe® Acrobat™ PDF files. The [Oracle Technology Network \(OTN\) Web site](http://www.oracle.com/technology/documentation/agile.html) (<http://www.oracle.com/technology/documentation/agile.html>) contains the latest versions of the Oracle Agile EDM PDF files. You can view or download these manuals from the Web site, or you can ask your Agile administrator if there is an Oracle Documentation folder available on your network from which you can access the documentation (PDF) files.

Note To read the PDF files, you must use the free Adobe Acrobat Reader™ version 7.0 or later. This program can be downloaded from the [Adobe Web site](http://www.adobe.com) (<http://www.adobe.com>).

Note Before calling Agile Support about a problem with an Oracle Agile EDM manual, please have the full part number, which is located on the title page.

TTY Access to Oracle Support Services

Oracle provides dedicated Text Telephone (TTY) access to Oracle Support Services within the United States of America 24 hours a day, 7 days a week. For TTY support, call 800.446.2398. Outside the United States, call +1.407.458.2479.

Readme

Any last-minute information about Oracle Agile EDM can be found in the Release Notes file on the [Oracle Technology Network \(OTN\) Web site](http://www.oracle.com/technology/documentation/agile_eseries.html) (http://www.oracle.com/technology/documentation/agile_eseries.html)

Agile Training Aids

Go to the [Oracle University Web page](http://www.oracle.com/education/chooser/selectcountry_new.html) (http://www.oracle.com/education/chooser/selectcountry_new.html) for more information on Agile Training offerings.

Accessibility of Code Examples in Documentation

Screen readers may not always correctly read the code examples in this document. The conventions for writing code require that closing braces should appear on an otherwise empty line; however, some screen readers may not always read a line of text that consists solely of a bracket or brace.

Accessibility of Links to External Web Sites in Documentation

This documentation may contain links to Web sites of other companies or organizations that Oracle does not own or control. Oracle neither evaluates nor makes any representations regarding the accessibility of these Web sites.

Introduction

This guide describes how to install the Agile e6.1 Java Server on UNIX.

Where to Go for More Information

For information on installing the Agile e6.1.1 Unix client, refer to the document Installation Manual for Agile e6.1.1 Java Client on Unix.

For information on installation prerequisites, including required operating system maintenance-level fixes and system patch levels, refer to the document Prerequisites Guide for Agile e6.1.1.

Please read the Administration Server Manual for Agile e6.1.1 for more information about how to use the Java Client with WebStart.

Preparing the Installation

Before installing the Java Server for UNIX, do all of the following:

1. Review the hardware and software requirements for your platform.
2. Follow the instructions in this chapter to prepare the installation.

Requirements

Note A complete list of all requirements can be found in the Prerequisites Guide for Agile e6.1.1.

The following has to be set:

1. Oracle Application Server and Oracle Database Instance have to be up and running. On the machine where you install Agile e6.1.1 the Oracle client/server has to be configured to access the Oracle Database Instance over SQLNet.
2. Login as installation user.
3. Point the JAVA_HOME environment variable to the installed Java Runtime Environment. This has to be a 32Bit Java5 runtime.
4. echo \$JAVA_HOME.
5. If \$JAVA_HOME is unknown to your shell environment, set it as follows:

In a c-shell (csh):

```
setenv JAVA_HOME <Path to the JRE Directory>  
e.g. setenv JAVA_HOME /usr/loval/java/jrel.5
```

6. Test the correct setting of \$JAVA_HOME with the following command:

```
$JAVA_HOME/bin/java-version
```

This should create the following output:

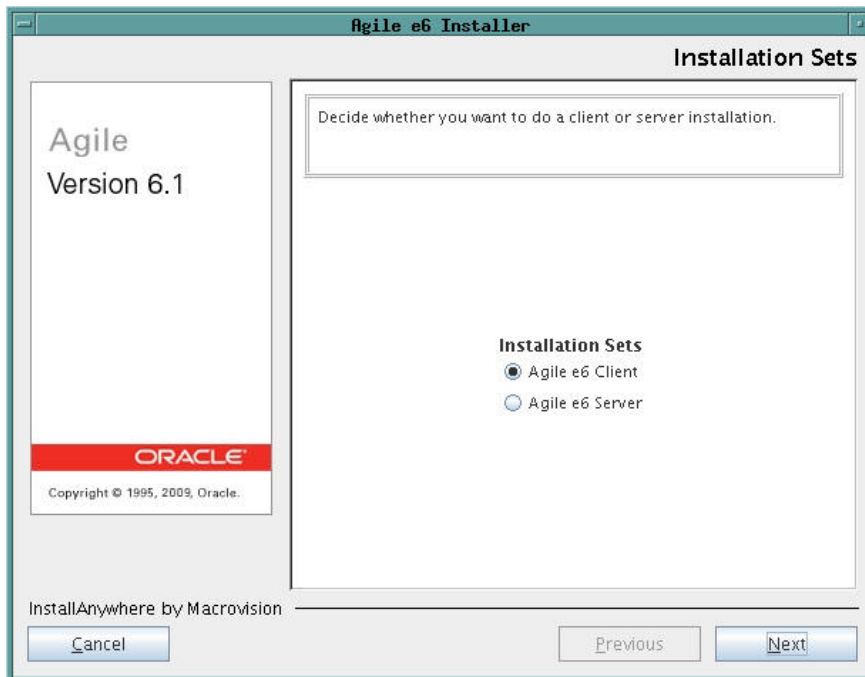
```
java version "1.5.0_16"  
Java™ 2 Runtime Environment, Standard Edition (build 1.5.0_16-b02)  
Java HotSpot™ Server VM (build 1.5.0_16-b02, mixed mode)
```

The DISPLAY variable is set and the X11 window can be opened.

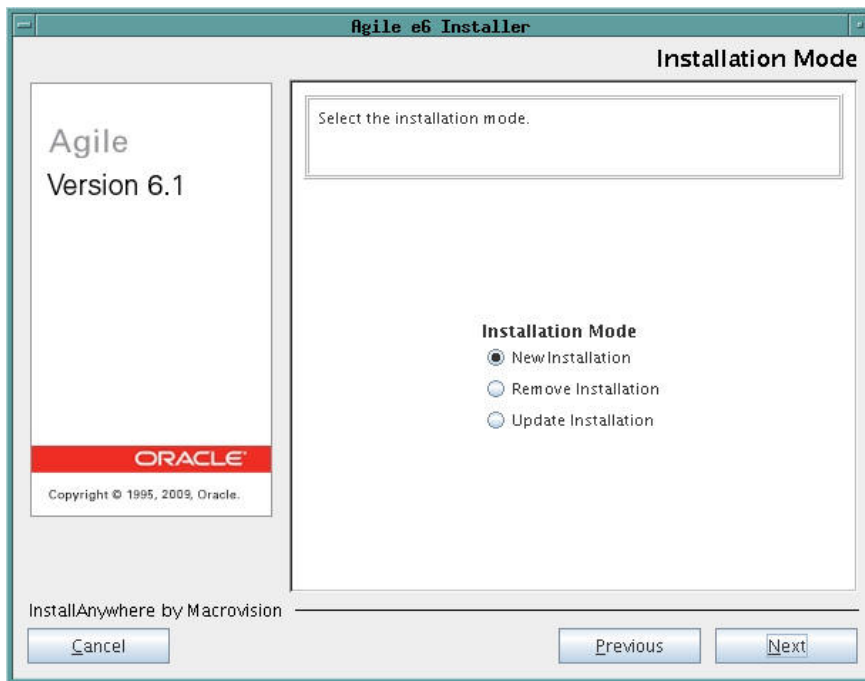
Installation with the Installer

Installation with GUI

1. Extract the downloaded installation file.
2. Change to the Installer directory `.../installer`.
`cd <installation-media-path>/installer.`
3. Enter the following command:
`./gui.csh`
The Installation Sets mask is opened.

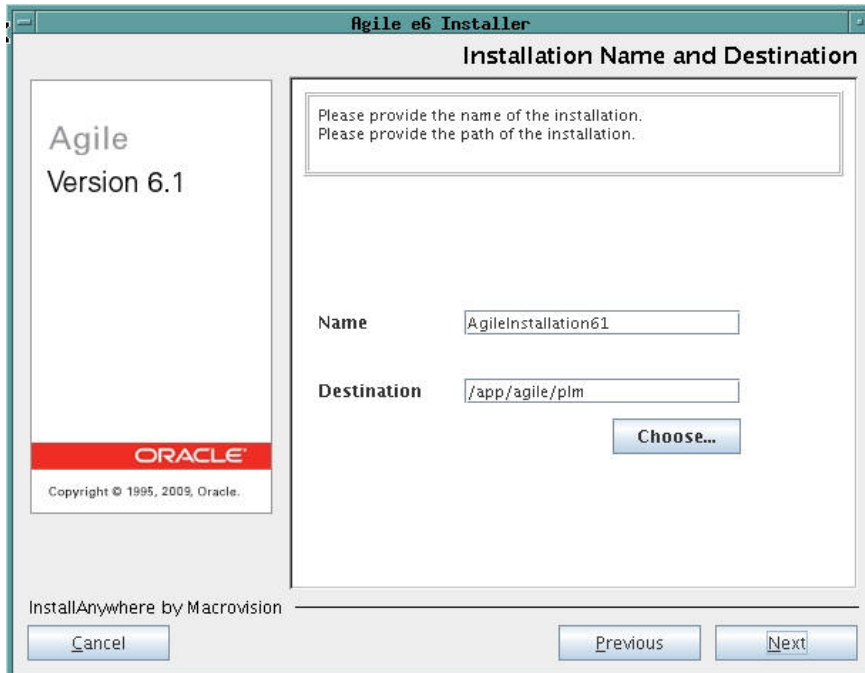


4. Select Agile e6 Server and click "Next".
The Installation Mode mask is opened.



5. Click "Next".

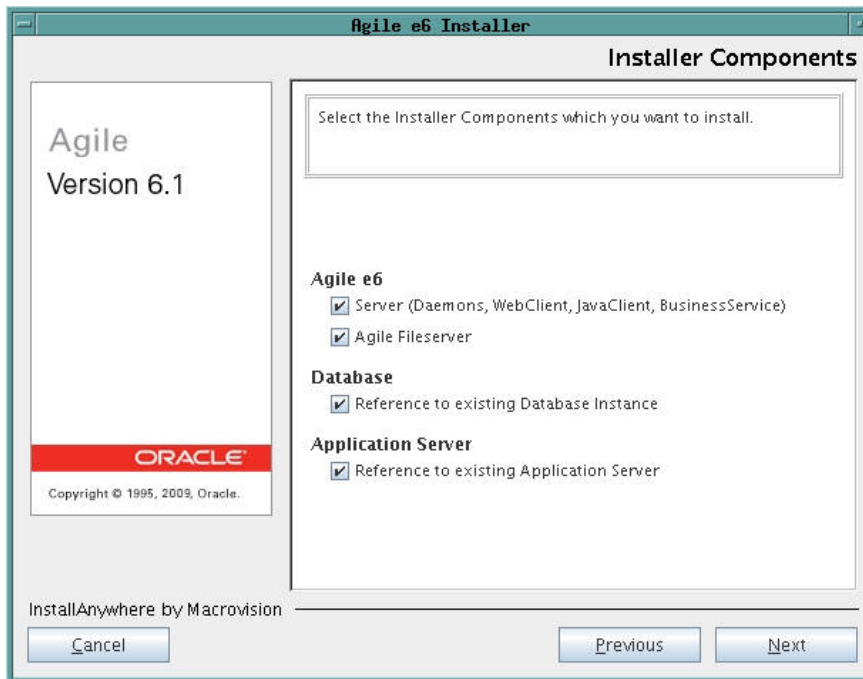
The Installation Name and Destination mask is opened.



Field	Description
Name	Installation name. This has to be a unique name which identifies the current installation. All components installed during this installation session will be installed under this ID.
Destination	Installation destination. Root path where Agile e6.1 is going to be installed. This has to be a non existing path.

6. Enter the installation name and the installation destination and click “Next”.

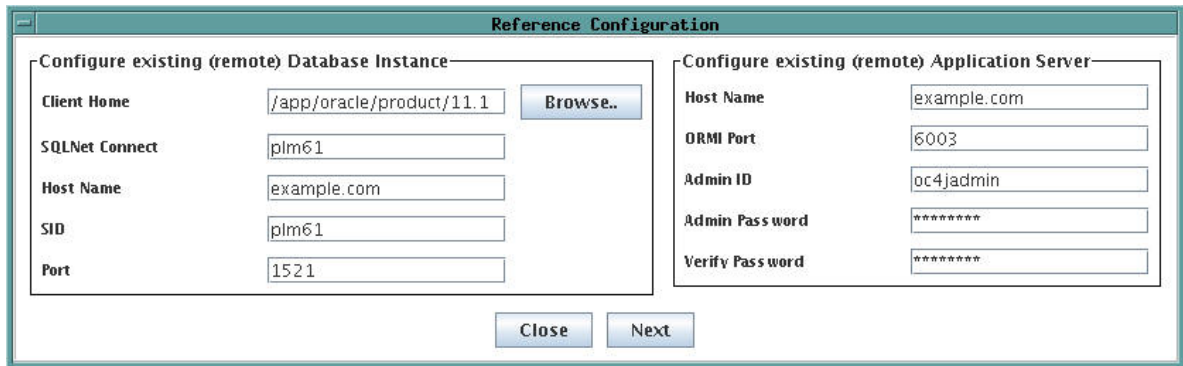
The Installer Component mask is opened.



Component	Description
Agile e6	Defines the Agile components to be installed. Note It is recommended not to change these values.
Database – Reference to existing Database Instance	References to an existing database instance (remote or local).
Application Server – Reference to existing Application Server	References to existing Oracle Application Server 10.1.3.3 (remote or local)

7. Click “Next”.

The Reference Configuration mask is opened. The mask contains only example data.



Configure existing (remote) Database Instance

Setting	Description
Client Home	The ORACLE_HOME path of your Oracle installation.
SQLNET Connect	The connect string defined in your \$ORACLE_HOME/NETWORK/ADMIN/tnsnames.ora file. Note Has to be configured manually in advance
Hostname	The hostname of your database server.
SID	The SID of the database you want to connect to.
Port	The port where the listener listens on the database server.

Configure existing (remote) Application Server

Setting	Description
Hostname	The hostname of your application server.
ORMI Port	The ORMI port on which the application server can be accessed (6003 is the standard Oracle Application Server port for that).
Admin ID	The username of a user on the application server which is allowed to deploy applications.
Admin Password	The password for that user.
Verify Password	The password entered above has to be repeated for verification.

- When the configuration options are defined click “Next”.
The Component Configuration mask is opened.

Component Configuration

General Settings

Host Name: example.com

Agile e6

Application

Name: plmref

Database User: plmref

Database Pass word: *****

Verify Pass word: *****

Import DB Dump: true

Create DB User: true

SYSTEM Pass word: *****

Verify Pass word: *****

Http Host: example.com

Http Port: 8088

ECI Port: 19997

Admin UIC: 200

Mail Server: nn

Dtv Daemon

Port Number: 552000610

Java Daemon

Port Number: 16087

Admin Port Number: 16088

Registration Port Number: 16089

Close Next

General Settings

Setting	Description
Hostname	Note Do not change any values here.

Agile e6 Application

Setting	Description
Name	The name of the default application you want to create (former axalantORIGIN)
Database User	The database user you want to use for the application.
Database Password	The password of the database user.
Verify Password	The password entered above has to be repeated for verification.
Import DB Dump	Select if you want the standard dump to be imported to the above defined database user.
Create DB User	Select if you want the DB User to be created automatically for the above defined database user.
SYSTEM Password	The password for the system user of the database has to be applied here if Create DB User is selected.
Verify Password	The password entered above has to be repeated for verification.
Http Host	The host where the web client is running (the application server host name).
Http Port	The port where the web client is running (theHTTP(s) port of your application server).
ECI Port	The port where the business service will be configured to "wait" for requests.
Admin UIC	The UIC of the EDB user who should get the admin mails.
Mailserver	If you want to send emails with the business services, define the name of your SMTP mailserver.

Agile e6 DtvDaemon

Setting	Description
Port Number	The port number the Daemon should use.

Agile e6 JavaDaemon

Setting	Description
Port Number	The port number the Daemon should use.
Admin Port Number	The port reserved for administrative requests.
Registration Port Number	The port reserved for registration requests.

9. When the component configuration options are defined click "Next".

The installation is started.

10. After the installation, all required processes should be running except the AdminClient service.

To start the AdminClient running in Apache Tomcat, enter the following:

```
cd $HOME/agile/installer/6.1/admin/apache-tomcat/bin
./startup.sh
```

This will start the standard Apache Tomcat on the port 8030 (HTTP) with the AdminClient application deployed inside.

Note If you want a secure environment with HTTPS you have to configure this manually.

Batch Installation

Note The Agile e6.1.1 Installer is fully batch enabled.

All installation tasks can be done in batch mode providing all necessary attributes in property files or per command line.

To perform a batch installation do the following:

1. Create the local installer with repository:

Install the installer and its repository to the local machine.

1. Open a c-shell and change to the installer directory.

e.g. `cd <install-media-path>/installer`

2. Point the JAVA_HOME variable to a jra 1.5 installation.

e.g. `setenv JAVA_HOME /usr/local/java/jdk1.5`

3. Execute: `setup.csh newInstallation -Dplm.inst.name=AgileInstallation61 -Dplm.inst.root=/app/agile/plm`

`plm.inst.name` = The unique name of your installation

`plm.int.root` = The empty path to your installation (directory should not exist)

2. Complete the Agile e6.1.1 batch installation

Note Database and Application Server installation have to be available and running.

1. Create the properties files for your Agile e6.1.1 batch installation in the properties directory `<install-media-path>/properties` (e.g. `<install-media-path>/properties/batch_install.properties`):

```
# Javahome for the installation
plm.inst.javahome=/usr/local/java/jdk1.5
# Hostname
plm.inst.host=<e61 servername>
# application parameters
plm.application.name=mytest
plm.application.dbpassword=mytest
plm.application.dbuser=mytest
plm.application.dbpoolminsize=4
plm.application.dbpoolmaxsize=10
plm.application.httphost=<appllicationserver name>
```

```
plm.application.httpport=<applicationserver http port>
plm.application.eciport=19998
plm.application.adminuic=201
plm.application.mailrelay=<mailserver name>
# should reference dump be imported
plm.application.dumpimport=false
# should the schema be created
# (system password must be also applied for creating a schema)
plm.application.creschema=false
# should the content of an existing schema be deleted
# (attention all objects of the defined schema will be lost)?
plm.application.delschemaobj=false
#plm.oracle.systempwd=ChangeOnInstall
# Javadaemon
plm.javadaemon.javahome=/usr/local/java/jdk1.5
plm.javadaemon.port=16222
plm.javadaemon.admport=16223
plm.javadaemon.regport=16224
# Web Components
plm.webpresentationervice.nodename=webplmenv
plm.webpresentationervice.javahome=/usr/local/java/jdk1.5
# DataviewDaemon
plm.dtvdaemon.port=552222610
# the database to import as defined in installation_prop.xml (normally
no need to change this)
plm.application.databasedefinition=ora111
plm.databasedefinition.nodename=ora111
plm.databasedefinition.dbhost=<databaseserver name>
plm.databasedefinition.sid=<database sid>
plm.databaseconnection.nodename=ora111
plm.databaseconnection.client_home=/app/oracle/product/11.1
plm.databaseconnection.connect=<database sqlnet connectstring>
plm.databaseconnection.jdbcconnectionurl=jdbc:oracle:thin:@<databaseser
ver name>:1521:<databaseserver sid>
# the application server to deploy as defined in installation_prop.xml
(normally no need to change this)
plm.application.applicationserverdefinition=oc4j_10133
plm.applicationserverdefinition.nodename=oc4j_10133
plm.applicationserverdefinition.servername=<applicationserver name>
plm.applicationserverdefinition.adminid=<applicationserver adminname>
plm.applicationserverdefinition.adminpass=<applicationserver admin
password>
```

2. Execute each of the following commands:

- Install the main server:

```
./setup.csh server.install -Dplm.inst.name=AgileInstallation61
```

- Install the businessservice binaries:

```
./setup.csh businessservice.install -  
Dplm.inst.name=AgileInstallation61
```

- Install the DTV daemon and start the daemon (properties will be read from file):

```
./setup.csh dtvdaemon.install -Dplm.inst.name=AgileInstallation61 -  
propertyfile properties/batch_install.properties
```

- Install the Java daemon and start the daemon (properties will be read from file):

```
./setup.csh javadaemon.install -Dplm.inst.name=AgileInstallation61 -  
propertyfile properties/batch_install.properties
```

- Create an application for the installation:

```
./setup.csh application.install -Dplm.inst.name=AgileInstallation61 -  
propertyfile properties/batch_install.properties
```

- Install the WPS binaries:

```
./setup.csh webpresentationsservice.install -  
Dplm.inst.name=AgileInstallation61
```

- Create an WPS environment and start apache tomcat process, deploy WebClient to the defined application server :

```
./setup.csh webpresentationsservice.cre_env -  
Dplm.inst.name=AgileInstallation61 -propertyfile  
properties/batch_install.properties
```

- Install the fileserver binaries (No process will be started):

```
./setup.csh fileserver.install -Dplm.inst.name=AgileInstallation61 -  
propertyfile properties/batch_install.properties
```

- Deploy the businessservice for the defined application to the application server:

```
./setup.csh application.businessservices.deploy -  
Dplm.inst.name=AgileInstallation61 -propertyfile  
properties/batch_install.properties
```

- Deploy plmapi (http support) to the application server:

```
./setup.csh plmapiear.install -Dplm.inst.name=AgileInstallation61 -  
propertyfile properties/batch_install.properties
```

- Deploy Java Client Web Start to the application server:

```
./setup.csh javaclientear.install -Dplm.inst.name=AgileInstallation61  
-propertyfile properties/batch_install.properties
```

Enable Trace (optional)

Note Please be aware that the tracing output may contain your passwords that you apply during the installation.

If you want to have detailed trace messages for your GUI installation the following environment variables for Unix has to be set:

- `setenv plm_ant_loglevel 4`
- `setenv plm_ia_stderr $HOME/tmp/iastdout.log`
- `setenv plm_ia_stdout $HOME/tmp/iastdout.log`

Chapter 4

Fileserver Installation

Note The following example works with the user “agile”.

1. Create the fileserver directory, e.g. /app/agile/edbserve as root user.
2. Change owner to your fileserver user.
3. Login as fileserver user.
4. Copy “\$ep_root/axalant/bin/<EP_MACH/fms*” and “\$ep_root/axalant/ini/fileserver.cfg” to your created fileserver directory.

Note Further information about the file fileserver.cfg can be found in the File Server documentation (Manager Information > File Server Management Functions > Create Vault).

Another option is to directly unpack the operating system specific zip files for the fileserver (e.g. <installation-media-path>/packages/<EP_MACH>/fileserver.zip) and to copy the files from the unpacked zip file.

5. Start the fileserver
nohup fms_srv -verbose -u \$USER &

Verify the Installation

1. After the Agile e6.1.1 installation, the processes (daemons) listed below should be running on the server machine.

```
ps -ef | grep <installation name>
```

The exact values depend on the installation, but in general the following processes have to be available:

- DataviewDaemon
- Javawrapper for JavaDaemon
- JavaDaemon
- Javawrapper for Apache Tomcat
- Apache Tomcat

2. Check the availability of all Agile e6.1.1 Oracle Application Server Applications.

Open - e.g. <http://example.com:7777/em/console/ias/oc4j/applications> (your OAS http host and port)

Following applications have to be available:

- Jacc<installation name>
- plmapi<installation name>
- BusinessService<application name>
- Agile e6 <installation name> WebClient webplmenv

3. Start the processes manually.

Note The database and application server processes should be running already.

If you want to start the e6.1.1 processes manually, do the following:

- JavaDaemon:

```
cd $sep_root/axalant/scripts
./jade start
```

- DataviewDaemon:

```
cd $sep_root/axalant/scripts
./dtv_dmn.sh
```

- PresentationService:

```
cd $sep_root/ext/apache-tomcat
./start_web.sh start
```

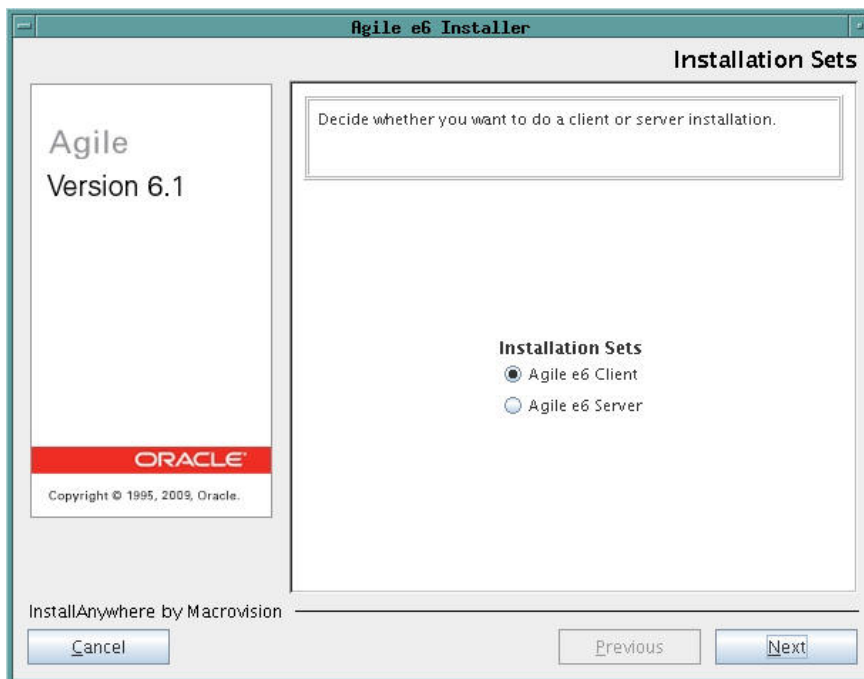

Chapter 6

Uninstall

To uninstall the server, do the following:

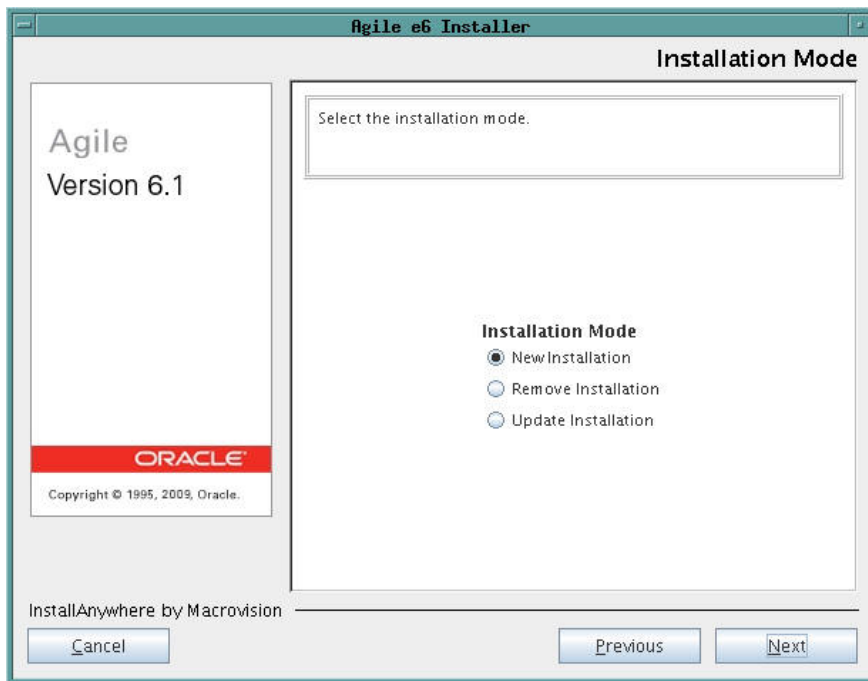
1. Open a c-shell.
2. Change to the Installer directory:
`cd <installation-media-path>/installer`
3. Enter the following command:
`./gui.csh`

The Installation Sets mask is opened



4. Select Agile e6 Server and click "Next".

The Installation Mode mask is opened.



5. Select "Remove Installation" and click "Next"
6. Select the name of the installation to be deleted.

Note All parts of the installation will be removed. The installation destination directory will be renamed. It can be deleted if it is of no use anymore.

Note The installer and the Administration client are not removed.

7. To remove the installer and the Administration client, enter the following:

Note All Installer information will be removed after this task!

```
su - <your e61 installation user>  
cd agile/installer/6.1/admin/apache-tomcat/bin  
./shutdown
```

If the Agile e6.1.1 installation is removed from the server, the directory can be deleted.

All components of the installation are removed!