

Agile

Version e6.1

ORACLE

# Oracle® Agile Engineering Data Management

Installation Manual for Agile e6.1.1 Server on  
Windows

Part No. E15615-01

August 2009



## Copyright and Trademarks

*Copyright © 1995, 2009, Oracle and/or its affiliates. All rights reserved.*

This software and related documentation are provided under a license agreement containing restrictions on use and disclosure and are protected by intellectual property laws. Except as expressly permitted in your license agreement or allowed by law, you may not use, copy, reproduce, translate, broadcast, modify, license, transmit, distribute, exhibit, perform, publish or display any part, in any form, or by any means. Reverse engineering, disassembly, or decompilation of this software, unless required by law for interoperability, is prohibited.

The information contained herein is subject to change without notice and is not warranted to be error-free. If you find any errors, please report them to us in writing.

If this software or related documentation is delivered to the U.S. Government or anyone licensing it on behalf of the U.S. Government, the following notice is applicable:

### U.S. GOVERNMENT RIGHTS

Programs, software, databases, and related documentation and technical data delivered to U.S. Government customers are "commercial computer software" or "commercial technical data" pursuant to the applicable Federal Acquisition Regulation and agency-specific supplemental regulations. As such, the use, duplication, disclosure, modification, and adaptation shall be subject to the restrictions and license terms set forth in the applicable Government contract, and, to the extent applicable by the terms of the Government contract, the additional rights set forth in FAR 52.227-19, Commercial Computer Software License (December 2007). Oracle USA, Inc., 500 Oracle Parkway, Redwood City, CA 94065.

This software is developed for general use in a variety of information management applications. It is not developed or intended for use in any inherently dangerous applications, including applications which may create a risk of personal injury. If you use this software in dangerous applications, then you shall be responsible to take all appropriate fail-safe, backup, redundancy and other measures to ensure the safe use of this software. Oracle Corporation and its affiliates disclaim any liability for any damages caused by use of this software in dangerous applications.

Oracle is a registered trademark of Oracle Corporation and/or its affiliates. Other names may be trademarks of their respective owners.

This software and documentation may provide access to or information on content, products and services from third parties. Oracle Corporation and its affiliates are not responsible for and expressly disclaim all warranties of any kind with respect to third party content, products and services. Oracle Corporation and its affiliates will not be responsible for any loss, costs, or damages incurred due to your access to or use of third party content, products or services.

# CONTENTS

---

Copyright and Trademarks.....	iii
Preface .....	v
<b>Introduction.....</b>	<b>1</b>
Where to Go for More Information.....	1
<b>Preparing the Installation.....</b>	<b>3</b>
Requirements .....	3
Windows 2003.....	3
Windows 2008.....	3
Further Requirements.....	4
<b>Installation with the Installer.....</b>	<b>5</b>
Installation with GUI .....	5
Finalize Operating System User Setup .....	13
AutoVue Integration Setup .....	13
Batch Installation .....	13
Enable Trace .....	16
<b>Uninstall .....</b>	<b>17</b>

# Preface

The Oracle documentation set includes Adobe® Acrobat™ PDF files. The [Oracle Technology Network \(OTN\) Web site](http://www.oracle.com/technology/documentation/agile.html) (<http://www.oracle.com/technology/documentation/agile.html>) contains the latest versions of the Oracle Agile EDM PDF files. You can view or download these manuals from the Web site, or you can ask your Agile administrator if there is an Oracle Documentation folder available on your network from which you can access the documentation (PDF) files.

---

**Note** To read the PDF files, you must use the free Adobe Acrobat Reader™ version 7.0 or later. This program can be downloaded from the [Adobe Web site](http://www.adobe.com) (<http://www.adobe.com>).

---

---

**Note** Before calling Agile Support about a problem with an Oracle Agile EDM manual, please have the full part number, which is located on the title page.

---

## TTY Access to Oracle Support Services

Oracle provides dedicated Text Telephone (TTY) access to Oracle Support Services within the United States of America 24 hours a day, 7 days a week. For TTY support, call 800.446.2398. Outside the United States, call +1.407.458.2479.

## Readme

Any last-minute information about Oracle Agile EDM can be found in the Release Notes file on the [Oracle Technology Network \(OTN\) Web site](http://www.oracle.com/technology/documentation/agile_eseries.html) ([http://www.oracle.com/technology/documentation/agile\\_eseries.html](http://www.oracle.com/technology/documentation/agile_eseries.html))

## Agile Training Aids

Go to the [Oracle University Web page](http://www.oracle.com/education/chooser/selectcountry_new.html) ([http://www.oracle.com/education/chooser/selectcountry\\_new.html](http://www.oracle.com/education/chooser/selectcountry_new.html)) for more information on Agile Training offerings.

## Accessibility of Code Examples in Documentation

Screen readers may not always correctly read the code examples in this document. The conventions for writing code require that closing braces should appear on an otherwise empty line; however, some screen readers may not always read a line of text that consists solely of a bracket or brace.

## Accessibility of Links to External Web Sites in Documentation

This documentation may contain links to Web sites of other companies or organizations that Oracle does not own or control. Oracle neither evaluates nor makes any representations regarding the accessibility of these Web sites.



# Introduction

This guide describes how to install Agile e6.1 running Microsoft Windows 2003 Enterprise Edition, Microsoft Windows Server 2008 64bit

## Where to Go for More Information

For complete information on installation prerequisites, including required operating system maintenance-level fixes and system patch levels, refer to the document Agile e6.1 Prerequisites Guide that includes the pre-installation checklist.

For information on database preparation and requirements, refer to the document Installation Manual for Oracle 11g for Agile e6.1 on Windows.

For information on Oracle Application Server preparation and requirements, refer to the Installation Manual for Oracle Application Server 10.1.3 for Agile e6.1.1 on Windows.



# Preparing the Installation

Before installing Agile e6.1.1, do the following:

1. Review the hardware and software requirements for your platform.
2. Set the necessary installation prerequisites.

## Requirements

---

**Note** A complete list of all requirements can be found in the Prerequisites Guide for Agile e6.1.1.

---

### Windows 2003

#### Oracle Application Server

If the Oracle Application Server 10.1.3.3 should be installed with the Agile e6.1.1 installer, the installation source (the base version 10.1.3.1, an Opatch update and the 10.1.3.3 patch) has to be unpacked on the harddisk first.

Further information about the Oracle Application Server 10.1.3 can be found in the Installation Manual for Oracle Application Server 10.1.3 on Windows/Unix for Agile e6.1.1.

#### Oracle Database 11g

If the Oracle Database 11g (client or server) should be installed with the Agile e6.1.1 installer, the installation source has to be unpacked on the harddisk first. The Agile e6.1.1 installer supports only the Oracle Database version 11.1.0.7.

For Windows Server 2003 the Oracle Database version 11.1.0.7 is a separate patch set which has to be available separately on the hard drive in addition to the Oracle Database version 11.1.0.6. The Agile e6.1.1 installer for Windows Server 2003 supports only the 32bit Version of the Oracle Database Server.

### Windows 2008

If you are not the “Administrator”, but user with “Administrator” privileges only, all installation tasks have to be executed in a cmd shell started with “Run as administrator”

To open a cmd shell with “Run as administrator”, do the following:

1. Select “Start” -> “All Programs” -> “Accessoires” -> “Command Prompt”
2. With Context Menu select “Run as administrator”
3. The “User Account Control” Window appears. Select “Continue” to go ahead.

4. The windows cmd shell appears. This is the shell you have to use for all installation tasks.

### Oracle Application Server

If the Oracle Application Server 10.1.3.4 should be installed with the Agile e6.1.1 installer, the installation source (the base version 10.1.3.1, an Opatch update and the 10.1.3.4 patch) has to be unpacked on the harddisk first.

---

**Note** On Windows Server 2008 only the Oracle Application Server 10.1.3.4 is supported.

---

Further information about the Oracle Application Server 10.1.3 can be found in the Installation Manual for Oracle Application Server 10.1.3 on Windows/Unix for Agile e6.1.1.

### Oracle Database 11g

If the Oracle Database 11g (client or server) should be installed with the Agile e6.1.1 installer, the installation source has to be unpacked on the harddisk first. The Agile e6.1.1 installer supports only the Oracle Database version 11.1.0.7.

For Windows Server 2008 the Oracle Database version 11.1.0.7 is a standalone installer without a patch. Agile e6.1.1 installer supports only the 64bit Version of the Oracle Database Server whereas a 32bit Oracle 11.1.0.7 client is also needed by the Agile e6.1.1 Server.

Further information about the Oracle Database 11g can be found in the document Installation Manual for Oracle 11g on Windows/Unix for Agile e6.1.1.

### Further Requirements

- A user with "Administrator" privileges is required.
- Point the JAVA\_HOME environment variable to the installed Java Runtime Environment. This has to be a 32Bit Java5 runtime.
- For Windows Server 2008 minimum Java5 Version is 1.5 Update 19.

---

**Note** Do NOT install on an existing production server that is in use.

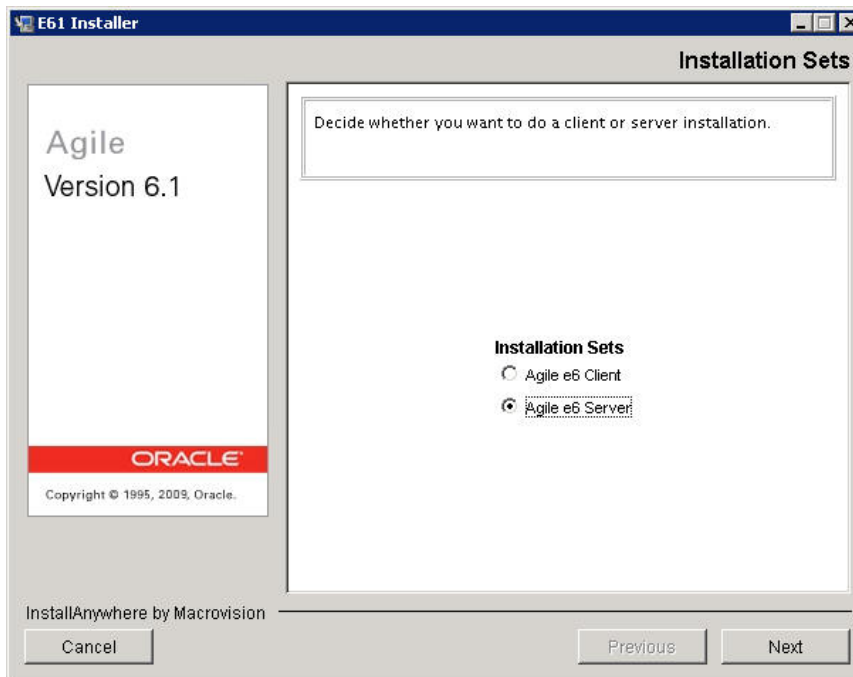
---

# Installation with the Installer

## Installation with GUI

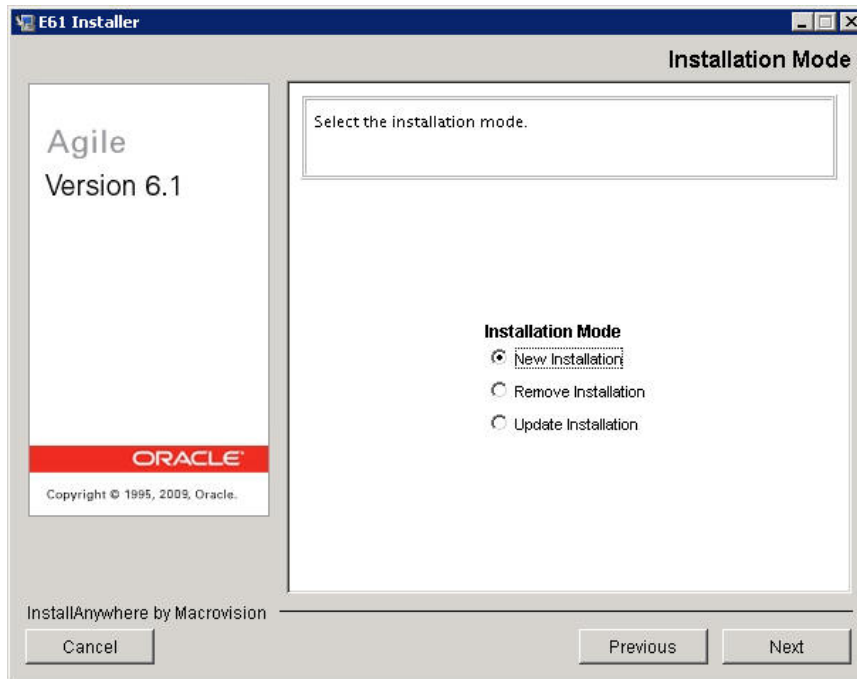
1. Extract the downloaded installation file.
2. Open a cmd shell (see Requirements for Windows 2008) and change to the Installer directory ...\\installer
3. Execute "gui.cmd".

The Installation Sets mask is opened.

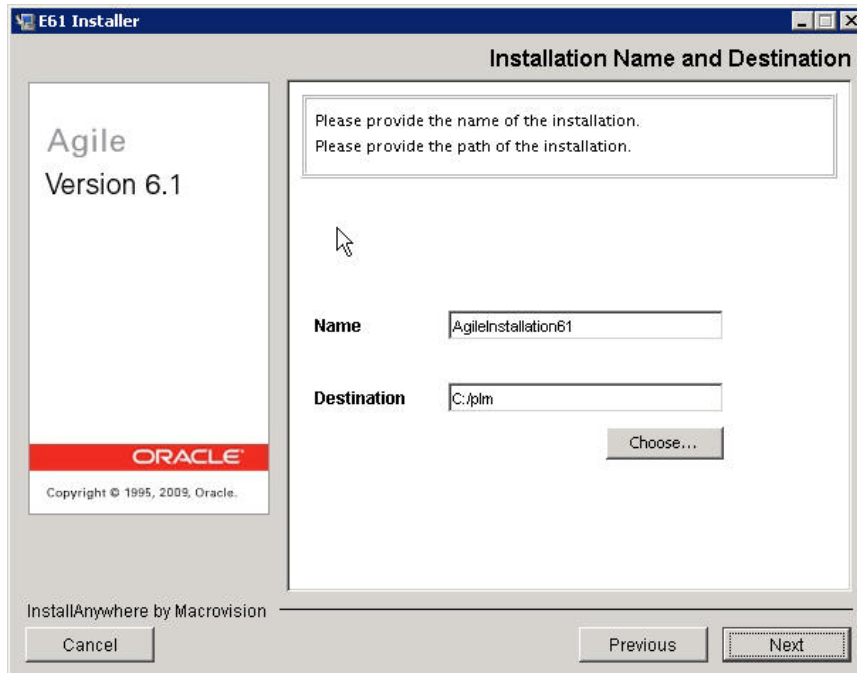


4. Select Agile e6 Server and click "Next".

The Installation Mode mask is opened.



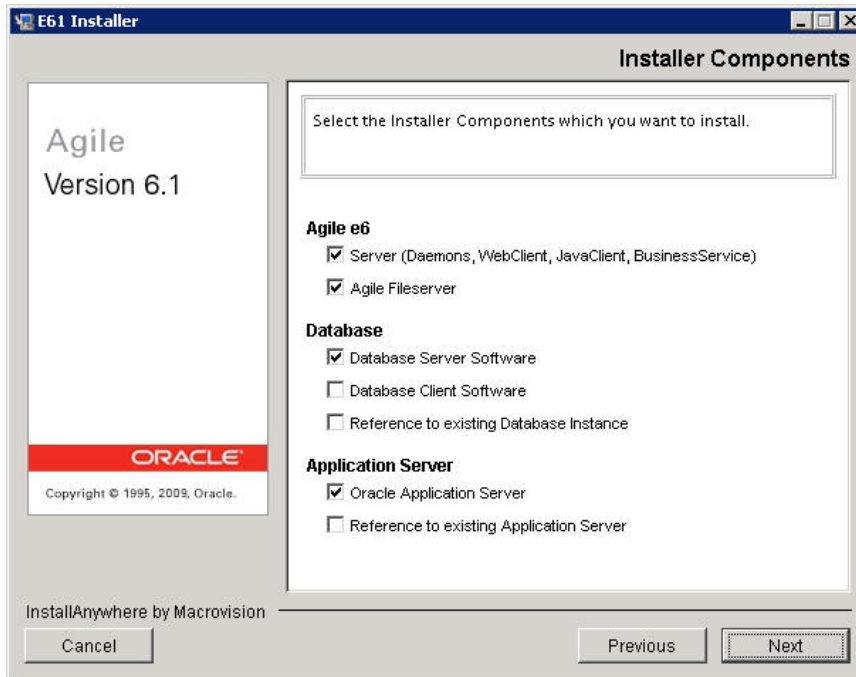
5. Click "Next".  
The Installation Name and Destination mask is opened.



Field	Description
Name	Installation name. This has to be a unique name which identifies the current installation. All components installed during this installation session will be installed under this ID.
Destination	Installation destination. Root path where Agile e6.1.1 is going to be installed. This has to be a non existing path.

6. Enter the installation name and the installation destination and click “Next”.

The Installer Component mask is opened.



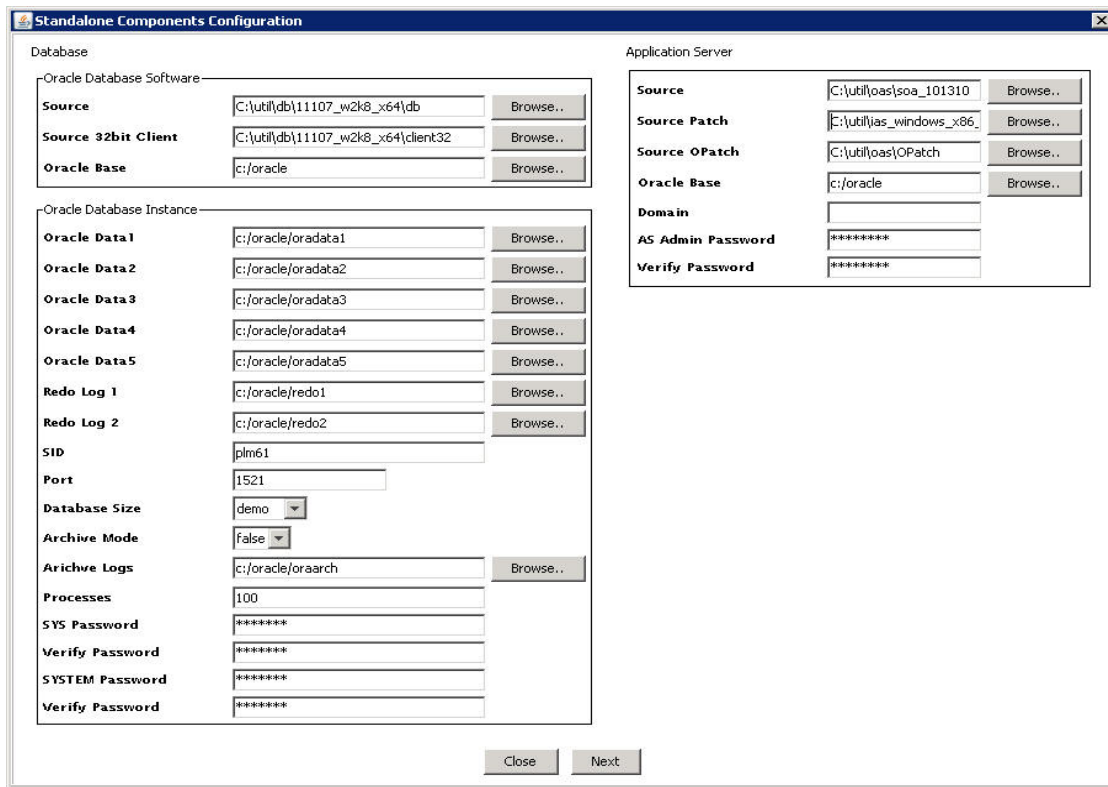
Component	Description
Agile e6	Defines the Agile components to be installed. It is recommended not to change these values.
Database – Database Server Software	For a full database installation with DB instance creation.
Database – Database Client Software	If a remote database instance exists, select this option and Reference to existing Database Instance.
Database – Reference to existing Database Instance	If a local or remote database instance exists, select this option.
Application Server – Oracle Application Server	If Oracle Application Server 10.1.3.3 should be installed with the installer, select this option.
Application Server – References to existing Application Server	If a local or remote Oracle Application Server 10.1.3.3 is already installed, select this option.

7. Select the component to be installed and click “Next”.

**Note** Depending on the selected components the following mask can look different.

**Note** Some of the values entered in the following masks will be validated. If the validation fails, a message containing the error is displayed. First the error has to be corrected before you can proceed!

8. Combination: Database Server Software and/or Oracle Application Server  
The Standalone Components Configuration mask is opened.



Database – Oracle Database Software

Setting	Description
Source	The source of the Oracle installation media.. When selecting Oracle server installation, this is the path of the database subdirectory of the Oracle installation media. When selecting Oracle client installation, this field only appears on Windows Server 2003 and is the path of the client subdirectory
Source Patch	This field does only appear on Windows Server 2003 platform. This is the path to the Oracle Database 11.1.0.7 patch set source directory.
Source 32bit Client	The source of the 32bit Oracle Client installation media. This field does only appear on Windows Server 2008 platform.

Oracle Base	The ORACLE_BASE directory where you want to install Oracle or where the instance (e.g. for Oracle 11g this path should look like "C:\oracle") should be created.
-------------	--

Database – Oracle Database Instance

Setting	Description
Oracle Data1-5	The Oracle database files can be stored on up to 5 disks. If you have less than 5 disks put more data files on the same disks. Under the selected directory, the directory "oradata<SID>" will be created (e.g. you selected "c:\oracle\oradata1" the db files will be placed in "c:\oracle\oradata1\oradata\plm61")  Oracle Data1: CONTROL01.CTL, EDB_LOB01.DBF, EDB_TMPIDX01.DBF, EDB01.DBF Oracle Data2: CONTROL02.CTL, EDB_IDX01.DBF, EDB_TMP01.DBF Oracle Data3: CONTROL03.CTL, TEMP01.DBF Oracle Data4: UNDOTBS01.DBF Oracle Data5: SYSAUX01.DBF, SYSTEM01.DBF, TOOLS01.DBF, USERS01.DBF
SID	The SID of the instance
Port	The port of the listener (default is 1521)
Database Size	Depending on how big the database dump is, different values can be selected.  Further information can be found in the document Installation Manual for Oracle 11g on Windows for Agile e6.1.1.
Archive Mode	True: Activates the archive mode of the database (mandatory for production usage).  False: Does not activate the archive mode for the database.
Archive Logs	Destination of the archive log files.
Processes	Depending on how many users will connect to the application, an appropriate value has to be applied here.  Further information can be found in the document Installation Manual for Oracle 11g on Windows for Agile e6.1.1.
SYS Password	The password which should be used for the Oracle SYS user.
Verify Password	The password entered above has to be repeated for verification.
System Password	The password which should be used for the Oracle SYSTEM user.
Verify Password	The password entered above has to be repeated for verification.

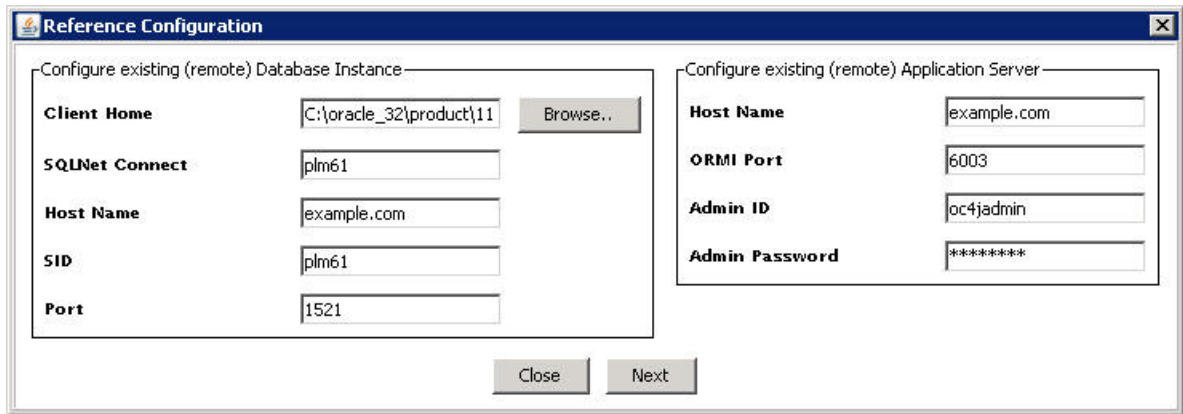
Application Server

Setting	Description
Source	The source of the Oracle Application Server 10.1.3.1 installation media.
Source Patch	On Windows Server 2003: The source of the Oracle Application Server 10.1.3.3 patch installation media.  On Windows Server 2008: The source of the Oracle Application Server 10.1.3.4 patch installation media. <b>Usually this directory path ends with ...ias_windows_x86_101340\Disk1</b>

Source OPatch	The source of the OPatch.
Oracle Base	The ORACLE_BASE directory where you want to install the Oracle Application Server. This can be the same as for the database installation.
Domain	If your server has a domain like "example.com", it needs to be applied here. Otherwise, leave it blank.
AS Admin Password	Password for the oc4j administrator user. The password has to have at least 8 characters and has to contain at least one number.
Verify Password	The password entered above has to be repeated for verification.

9. Combination: Database Client Software or Reference to existing Database Instance and Oracle Application Server

The Reference Configuration mask is opened.



Configure existing (remote) Database Instance

Setting	Description
Client Home	The Oracle Client Home directory
SQLNet Connect	The SQLNet connect string as defined in e.g. tnsnames.ora
Host Name	The host name of your database server.
SID	The SID of the database you want to connect to.
Port	The port where the listener listens on the database server.

**Note** On Windows 2008 the Client home directory has to be set to the 32-bit Oracle client.

Configure existing (remote) Application Server

Setting	Description
Hostname	The hostname of your application server.
ORMI Port	The ORMI port on which the application server can be accessed (6003 is the standard Oracle Application Server port for that).
Admin ID	The username of a user on the application server which is allowed to deploy applications.

Admin Password	The password for that user.
----------------	-----------------------------

10. When the configuration options are defined click “Next”.

**Note** To configure an existing database or application server they have to be up and running, because the installer tries to connect to them. If the connection fails the installer will not proceed.

The Component Configuration mask is opened.

The screenshot shows the 'Component Configuration' window with the following sections:

- General Settings:** Host Name: example.com
- Agile e6:**
  - Name: plmref
  - Database User: plmref
  - Database Password: [Empty]
  - Verify Password: [Empty]
  - Import DB Dump: true
  - Create DB User: true
  - SYSTEM Password: [Empty]
  - Verify Password: [Empty]
  - Http Host: example.com
  - Http Port: 80
  - ECl Port: 19997
  - Admin UIC: 200
  - Mail Server: [Empty]
- Agile e6 File Server:**
  - Service Name: AgilePLM\_FileService
  - Destination: c:\fms [Browse..]
- Dtv Daemon:**
  - Service Name: AgilePLM\_DTVDaemon
  - Port Number: 552000610
- Java Daemon:**
  - Service Name: AgilePLM\_JavaDaemon
  - Port Number: 16087
  - Admin Port Number: 16088
  - Registration Port Number: 16089

Buttons: Close, Next

General Settings

Setting	Description
Hostname	Identified hostname of the server

Agile e6 Application

Setting	Description
Name	The name of the default application you want to create (former axalantORIGIN)
Database User	The database user you want to use for the application.
Database Password	The password of the database user.
Verify Password	The password entered above has to be repeated for verification.
Import DB Dump	Select if you want the standard dump to be imported to the above defined database user.
Create DB User	Select if you want the database user to be created automatically.
SYSTEM Password	Password of the Oracle database user. <hr/> <b>Note</b> You only have to apply a value here if you want to create a new database user and selected that in the field above. <hr/>
Verify Password	The password entered above has to be repeated for verification.
Http Host	The host where the web client is running (the application server host name).
Http Port	The port where the web client is running (the HTTP(s) port of your application server).
ECI Port	The port where the business service will be configured to "wait" for requests.
Admin UIC	The UIC of an Agile e6.1.1 user to whom administrative emails should be send to.
Mailserver	If you want to send emails with the business services, define the name of your SMTP mailserver.

Agile e6 DtvDaemon

Setting	Description
Servicename	The windows service name.
Portnumber	The port number the Daemon should use.

Agile e6 JavaDaemon

Setting	Description
Servicename	The windows service name.
Portnumber	The port number the Daemon should use.
Admin Portnumber	The admin port number the Daemon should use.
Registration Portnumber	The registration portnumber the Daemon should use.

Agile e6 Fileserver

Setting	Description
Servicename	The windows service name.
Destination	The destination of the fileserver binaries.

The fileserver default rpc port is 804257548. To use a different rpc port you have to change the value in the registry after the installation has finished and restart the fileserver service:

HKEY\_LOCAL\_MACHINE\SOFTWARE\Agile\AgilePLM\_FileService\RPC\_NMB

11. When the component configuration options are defined click "Next".

The installation is started.

## Finalize Operating System User Setup

During the windows server installation the installer will create two operating system users and several services running under these users.

The users will be created and their account is disabled by default. The users have to be activated first. They have to change their password and set the password for the service startup.

Activate the operating system user with the Microsoft management console:

1. Open the Microsoft management console: Start > Setting > Control Panel > Administrative Tools > Computer Management > System Tools > Local Users and Groups > Users
2. Open user axalantrt, edbserv.
3. Deselect "Account is disabled".
4. Change the properties for the operating system users according to your needs.
5. Click OK.

Change operating system user password:

1. You have to change the password for the newly created operating system users "axalantrt" and "edbserv" according to your needs.

Set the passwords for the service startup:

1. Open the Microsoft management console: Start > Settings > Control Panel -> Administrative Tools -> Computer Management -> Services and Applications -> Services
2. Open the Properties and change the "Log On" password as you defined it in the step before for the following services:
  - AgilePLM\_DTVDaemon -> running under "axalantrt"
  - AgilePLM\_FileService -> running under "edbserv"
  - AgilePLM\_JavaDaemon -> running under "axalantrt"
  - AgilePLM\_PS\_webplmenv -> running under "axalantrt"

## AutoVue Integration Setup

If you want to use the Autovue Integration refer to the "PLM611\_AutoVueIntegration\_Installation.pdf" manual.

## Batch Installation

---

**Note** The Agile e6.1.1 Installer is fully batch enabled.

---

All installation tasks can be done in batch mode providing all necessary attributes in property files or per command line.

To perform a batch installation do the following:

1. Create the local installer with repository:

Install the installer and its repository to the local machine.

1. Open a cmd shell (see Requirements for Windows 2008) and change to the installer directory.

e.g. `cd <install-media-path>\installer`

2. Point the JAVA\_HOME variable to a jre 1.5 installation.

e.g. `set JAVA_HOME=C:\program files\Java\jre1.5`

3. Execute: `setup.cmd newInstallation -Dplm.inst.name=AgileInstallation61 -Dplm.inst.root=C:\plm`

`plm.inst.name` = The unique name of your installation

`plm.int.root` = The empty path to your installation (directory should not exist)

2. Complete the Agile e6.1.1 batch installation

---

**Note** Database and Application Server installation have to be available and running.

---

1. Create the properties files for your Agile e6.1.1 batch installation in the properties directory `<install-media-path>\properties` (e.g. `<install-media-path>\properties\batch_install.properties`):

```
# Javahome for the installation
plm.inst.javahome=C:\\Program Files\\Java\\jre1.5.0
# Hostname
plm.inst.host=khe-vidal-eng3
# application parameters
plm.application.name=mytest
plm.application.dbpassword=mytest
plm.application.dbuser=mytest
plm.application.dbpoolminsize=4
plm.application.dbpoolmaxsize=10
plm.application.httphost=<applicationserver name>
plm.application.httpport=<applicationserver http port>
plm.application.eciport=19998
plm.application.adminuic=201
plm.application.mailrelay=<mailserver name>
# should reference dump be imported
plm.application.dumpimport=false
# should the schema be created
# (system password must be also applied for creating a schema)
plm.application.creschema=false
# should the content of an existing schema be deleted
# (attention all objects of the defined schema will be lost)?
plm.application.delschemaobj=false
#plm.oracle.systempwd=ChangeOnInstall
# Javadaemon
```

```
plm.javadaemon.javahome=C:\\Program Files\\Java\\jre1.5.0
# Web Components
plm.webpresentation.service.nodename=webplmenv
plm.webpresentation.service.javahome=C:\\Program Files\\Java\\jre1.5.0
# Fileserver parameters
plm.fileserver.destination=D:\\\\yin_fms
plm.databaseconnection.client_home=E:\\oratest\\product\\11.1\\db_1
# the database to import as defined in installation_prop.xml (normally
no need to change this)
plm.application.databasedefinition=ora111
plm.databasedefinition.nodename=ora111
plm.databasedefinition.dbhost=<databaseserver name>
plm.databasedefinition.sid=<database sid>
plm.databaseconnection.nodename=ora111
plm.databaseconnection.client_home=D:\\oracle\\product\\11.1.0\\client
_1
plm.databaseconnection.connect=<database sqlnet connectstring>
plm.databaseconnection.jdbcconnectionurl=jdbc:oracle:thin:@<databasese
rver name>:1521:<databaseserver sid>
# the application server to deploy as defined in installation_prop.xml
(normaly no need to change this)
plm.application.applicationserverdefinition=oc4j_10133
plm.applicationserverdefinition.nodename=oc4j_10133
plm.applicationserverdefinition.servername=<applicationserver name>
plm.applicationserverdefinition.adminid=<applicationserver adminname>
plm.applicationserverdefinition.adminpass=<applicationserver admin
password>
```

## 2. Execute each of the following commands:

- Install the main server:  
./setup.cmd server.install -Dplm.inst.name=AgileInstallation61
- Install the portmapper:  
./setup.cmd portmapper.install -Dplm.inst.name=AgileInstallation61
- Install the businessservice binaries:  
./setup.cmd businessservice.install -  
Dplm.inst.name=AgileInstallation61
- Install the DTV daemon and start the daemon (properties will be read from file):  
./setup.cmd dtvdaemon.install -Dplm.inst.name=AgileInstallation61 -  
propertyfile properties/batch\_install.properties
- Install the Java daemon and start the daemon ( properties will be read from file):  
./setup.cmd javadaemon.install -Dplm.inst.name=AgileInstallation61 -  
propertyfile properties/batch\_install.properties
- Create an application for the installation:  
./setup.cmd application.install -Dplm.inst.name=AgileInstallation61 -  
propertyfile properties/batch\_install.properties
- Install the WPS binaries:  
./setup.cmd webpresentation.service.install -

```
Dplm.inst.name=AgileInstallation61
```

- Create an WPS environment and start apache tomcat process, deploy WebClient to the defined application server :

```
./setup.cmd webpresentationsservice.cre_env -  
Dplm.inst.name=AgileInstallation61 -propertyfile  
properties/batch_install.properties
```

- Install the fileserver binaries (No process will be started):

```
./setup.cmd fileserver.install -Dplm.inst.name=AgileInstallation61 -  
propertyfile properties/batch_install.properties
```

- Deploy the businessservice for the defined application to the application server:

```
./setup.cmd application.businessservices.deploy -  
Dplm.inst.name=AgileInstallation61 -propertyfile  
properties/batch_install.properties
```

- Deploy plmapi (http support) to the application server:

```
./setup.cmd plmapiear.install -Dplm.inst.name=AgileInstallation61 -  
propertyfile properties/batch_install.properties
```

- Deploy Java Client Web Start to the application server:

```
./setup.cmd javaclientear.install -Dplm.inst.name=AgileInstallation61  
-propertyfile properties/batch_install.properties
```

## Enable Trace

---

**Note** Please be aware that the trace output may contain your passwords that you applied during the installation.

---

If you want to have detailed trace messages for your GUI installation the following environment variables have to be set for Windows:

---

**Note** The path to the log files has to be existing already.

---

- set plm\_ant\_loglevel=4
- set plm\_ia\_stderr=C:\temp\iastderr.log
- set plm\_ia\_stdout=C:\temp\iastdout.log

## Chapter 4

# Uninstall

To uninstall the server, do the following:

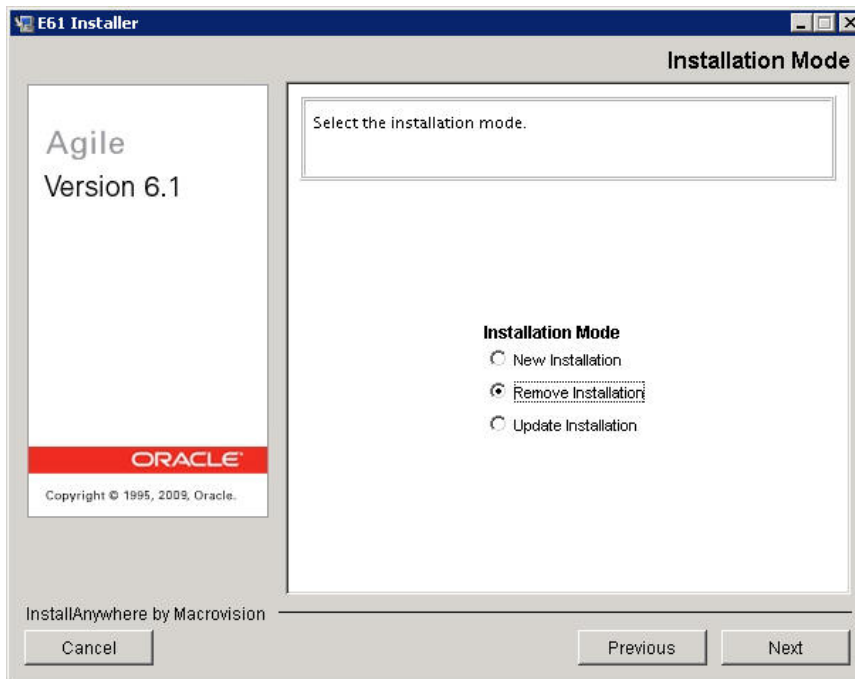
1. Open a cmd shell (see Requirements for Windows 2008).
2. Change to the Installer directory:  

```
cd <installation-media-path>\installer
```
3. Enter the following command:  

```
.\gui.cmd
```

The Installation Sets mask is opened

4. Select Agile e6 Server and click “Next”.  
 The Installation Mode mask is opened.



5. Select “Remove Installation” and click “Next”
6. Select the name of the installation to be deleted.

**Note** All parts of the installation will be removed. The installation destination directory will be renamed. It can be deleted if it is of no use anymore.

**Note** The installer and the Administration client are not removed.

7. To remove the installer and the Administration client, enter the following:

```
cd C:\...\installer\6.1\admin\apache-tomcat\bin
removeAgileTomcatService.bat
delete the directory "C:\...\installer\6.1"
```

All components of the installation are removed!