

Agile

Version e6.1

ORACLE

Oracle® Agile Engineering Data Management AutoVue Integration

Installation and Administration Manual for AutoVue
Integration on Windows/Unix for Agile e6.1.1

Part No. E15617-01

August 2009

Copyright and Trademarks

Copyright © 1992, 2009, Oracle and/or its affiliates. All rights reserved.

This software and related documentation are provided under a license agreement containing restrictions on use and disclosure and are protected by intellectual property laws. Except as expressly permitted in your license agreement or allowed by law, you may not use, copy, reproduce, translate, broadcast, modify, license, transmit, distribute, exhibit, perform, publish or display any part, in any form, or by any means. Reverse engineering, disassembly, or decompilation of this software, unless required by law for interoperability, is prohibited.

The information contained herein is subject to change without notice and is not warranted to be error-free. If you find any errors, please report them to us in writing.

If this software or related documentation is delivered to the U.S. Government or anyone licensing it on behalf of the U.S. Government, the following notice is applicable:

U.S. GOVERNMENT RIGHTS

Programs, software, databases, and related documentation and technical data delivered to U.S. Government customers are "commercial computer software" or "commercial technical data" pursuant to the applicable Federal Acquisition Regulation and agency-specific supplemental regulations. As such, the use, duplication, disclosure, modification, and adaptation shall be subject to the restrictions and license terms set forth in the applicable Government contract, and, to the extent applicable by the terms of the Government contract, the additional rights set forth in FAR 52.227-19, Commercial Computer Software License (December 2007). Oracle USA, Inc., 500 Oracle Parkway, Redwood City, CA 94065.

This software is developed for general use in a variety of information management applications. It is not developed or intended for use in any inherently dangerous applications, including applications which may create a risk of personal injury. If you use this software in dangerous applications, then you shall be responsible to take all appropriate fail-safe, backup, redundancy and other measures to ensure the safe use of this software. Oracle Corporation and its affiliates disclaim any liability for any damages caused by use of this software in dangerous applications.

Oracle is a registered trademark of Oracle Corporation and/or its affiliates. Other names may be trademarks of their respective owners.

This software and documentation may provide access to or information on content, products and services from third parties. Oracle Corporation and its affiliates are not responsible for and expressly disclaim all warranties of any kind with respect to third party content, products and services. Oracle Corporation and its affiliates will not be responsible for any loss, costs, or damages incurred due to your access to or use of third party content, products or services.

CONTENTS

Copyright and Trademarks.....	iii
Preface	v
Introduction.....	1
Where to Go for More Information.....	1
Preparing the Installation.....	3
Installation Setup Overview.....	3
Recommended Installation Architecture	4
Communication.....	4
Firewall support	5
Prerequisites.....	6
View Server	6
Installation.....	7
View Server	7
Agile e6.1.1 Application Configuration	7
Installation architecture with firewall.....	9
Enabling HTTP(S) support	10
Installation of the Offline Metafile Cache Service	13
Extract the Installation Package.....	13
Adapt the Installation.....	13
Adapt the Service Settings	14
Runtime	15
Install as Service	15
Remove Service	16
Run as Console Application	16
Set Up the AutoVue Online Help	17
AutoVue for Java and Web Client	17
AutoVue for the Native Windows Client.....	17

Preface

The Oracle documentation set includes Adobe® Acrobat™ PDF files. The [Oracle Technology Network \(OTN\) Web site](http://www.oracle.com/technology/documentation/agile.html) (<http://www.oracle.com/technology/documentation/agile.html>) contains the latest versions of the Oracle Agile EDM PDF files. You can view or download these manuals from the Web site, or you can ask your Agile administrator if there is an Oracle Documentation folder available on your network from which you can access the documentation (PDF) files.

Note To read the PDF files, you must use the free Adobe Acrobat Reader™ version 7.0 or later. This program can be downloaded from the [Adobe Web site](http://www.adobe.com) (<http://www.adobe.com>).

Note Before calling Agile Support about a problem with an Oracle Agile EDM manual, please have the full part number ready, which is located on the title page.

TTY Access to Oracle Support Services

Oracle provides dedicated Text Telephone (TTY) access to Oracle Support Services within the United States of America 24 hours a day, 7 days a week. For TTY support, call 800.446.2398. Outside the United States, call +1.407.458.2479.

Readme

Any last-minute information about Oracle Agile EDM can be found in the Release Notes file on the [Oracle Technology Network \(OTN\) Web site](http://www.oracle.com/technology/documentation/agile_eseries.html) (http://www.oracle.com/technology/documentation/agile_eseries.html)

Agile Training Aids

Go to the [Oracle University Web page](http://www.oracle.com/education/chooser/selectcountry_new.html) (http://www.oracle.com/education/chooser/selectcountry_new.html) for more information on Agile Training offerings.

Accessibility of Code Examples in Documentation

Screen readers may not always correctly read the code examples in this document. The conventions for writing code require that closing braces should appear on an otherwise empty line; however, some screen readers may not always read a line of text that consists solely of a bracket or brace.

Accessibility of Links to External Web Sites in Documentation

This documentation may contain links to Web sites of other companies or organizations that Oracle does not own or control. Oracle neither evaluates nor makes any representations regarding the accessibility of these Web sites.

Introduction

This guide describes how to install the AutoVue integration for Agile e6.1.1 on a Windows and UNIX operating system.

AutoVue has been tested with data generated with the following MCAD integrations:

- Oracle Agile Engineering Data Management - MCAD Connector for Catia V5 (V6.5.3)
- Oracle Agile Engineering Data Management - MCAD Connector for Pro/Engineer (V3.7.3)
- Oracle Agile Engineering Data Management - MCAD Connector for Solid Works (V2.9.1)
- Oracle Agile Engineering Data Management - MCAD Connector for Solid Edge (V3.4.1)
- Oracle Agile Engineering Data Management - MCAD Connector for Unigraphics NX (V3.9.3)
- Oracle Agile Engineering Data Management - MCAD Connector for AutoCAD, Inventor and OneSpace Designer (V3.1)

Where to Go for More Information

For further AutoVue installation instructions not covered in this Installation Manual refer to the AutoVue documentation on the Oracle Technology Network (OTN) Web site located at:

<http://www.oracle.com/technology/documentation/autovue.html>

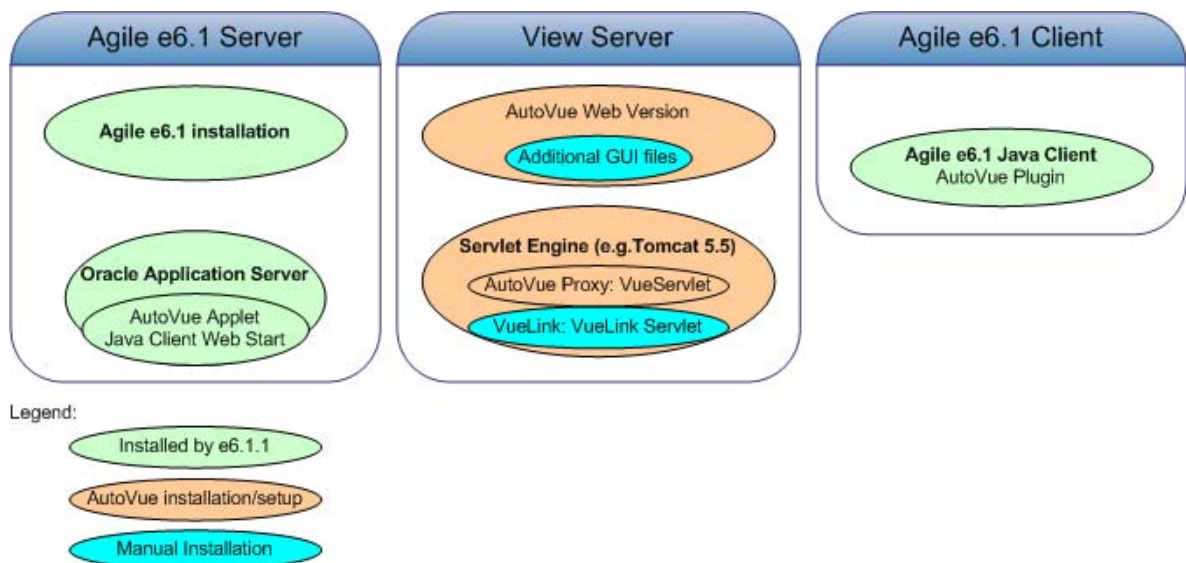
Chapter 2

Preparing the Installation

Installation Setup Overview

With e6.1.1 the AutoVue integration is part of the standard e6.1.1 installation.

The following Picture shows the components which must be setup.



Agile e6.1 Server:

The Agile e6.1.1 server with the AutoVue integration component. The AutoVue Applet is deployed in the Oracle Application Server used for the Agile e6.1.1 installation. The JavaClient Web start is deployed in the Oracle Application Server used for the Agile e6.1.1 installation. No manual steps necessary for the installation on the e6.1.1 server.

View Server:

On the View Server the AutoVue Web Version (AutoVue Server), AutoVue Proxy, and VueLink Servlet component of the Agile e6.1.1 AutoVue Integration are running.

AutoVue Web Version must be set up as described in the AutoVue Web Version 19.3.4 documentation.

The setup for the VueLink Servlet component of the Agile e6.1.1 AutoVue Integration is described later in this document.

The AutoVue Proxy/VueServlet (see section “Product Architecture” in the file Install.pdf of the AutoVue Web Version 19.3.4 documentation) is running on a J2EE-enabled Application Server/ServletEngines. It allows the AutoVue Applet to communicate with the AutoVue server using the standard HTTP(S) protocol.

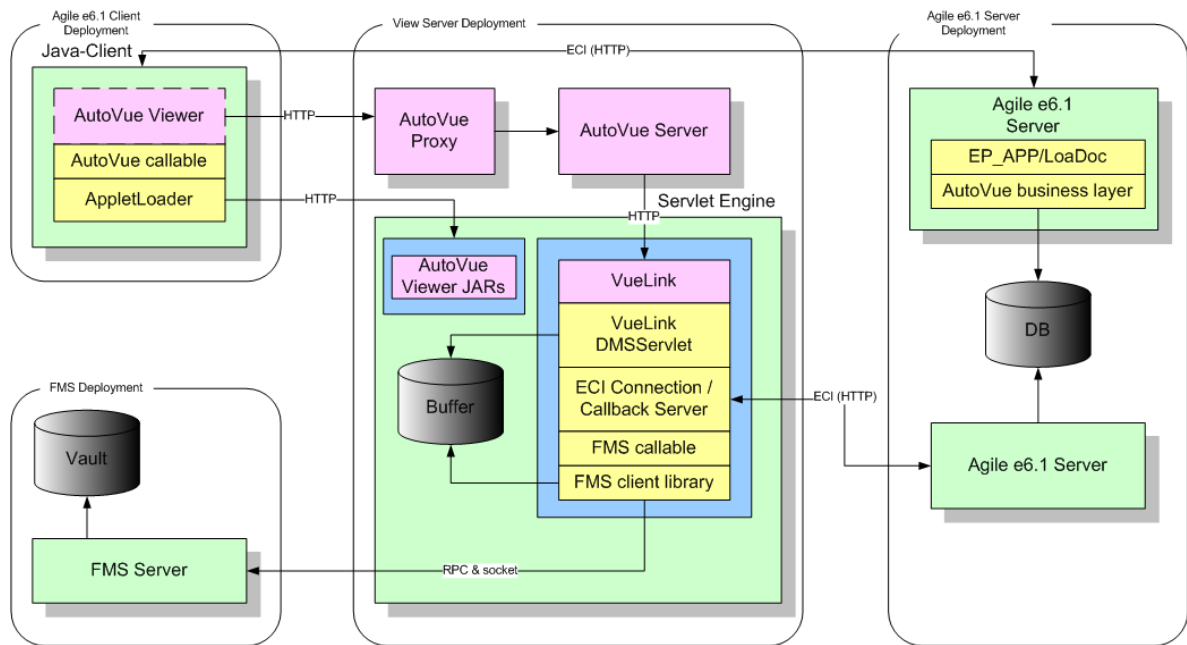
Note The View Server needs a fast connection to the Agile e6.1 fileserver, because the files from the vaults will be transmitted from the fileserver to the ViewServer.

Agile e6.1.1 Client:

Native Agile e6.1.1 Java Client installation is containing the AutoVue Plugin.

Recommended Installation Architecture

The following picture shows the communication between the involved components.



Communication

Java-Client

The Java-Client provides an AutoVue-Viewer-Plugin. The AutoVue-Viewer-Plugin downloads the AutoVue Viewer from the central AutoVue installation during the first viewing operation.

AutoVue Viewer

The AutoVue Viewer communicates with the AutoVue Server via direct socket connection or a HTTP/HTTPS connection.

Note The AutoVue Proxy provides the HTTP/HTTPS support.

AutoVue Server

The AutoVue Server uses the VueLink framework to communicate via HTTP with the Agile e6.1 DMS Service. The AutoVue Server downloads the files and metadata from the DMS Service to provide the visual data to the AutoVue Viewer.

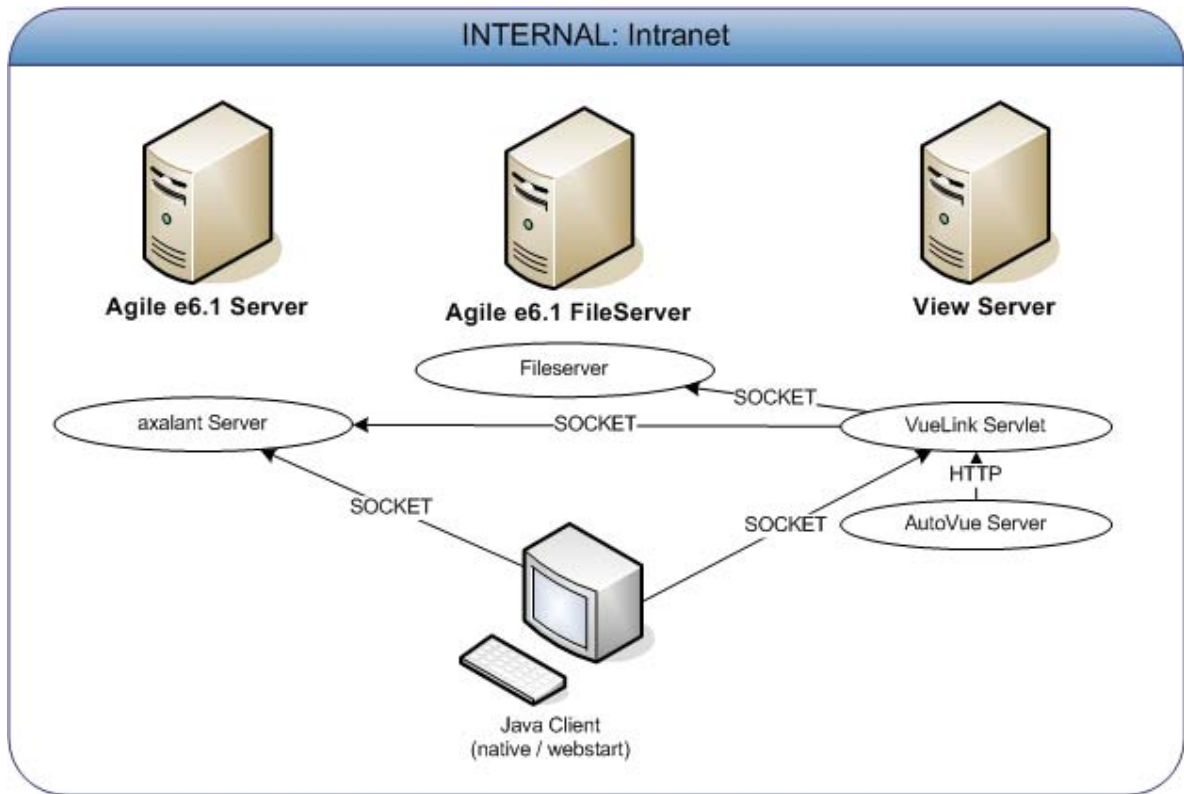
DMS Service

The Agile e6.1 DMS Service uses an ECI connection to communicate with the PLM Server. The DMS Service uses the FMS client functionality to provide access to the PLM vault.

Firewall support

The Java-Client supports a firewall friendly connection with the PLM Server. The download of the AutoVue Viewer and the connection to the AutoVue Server can communication through a firewall.

Installation architecture without firewall (standard)



Note You have to use a separate server for the View Server because the transformation of the native CAD data uses a lot of memory and CPU.

1. Check the prerequisites and perform the installation tasks described in the section "View Server".

2. Perform the tasks described in the “Agile e6.1 application configuration” section for each application.
3. Test the installation.

Prerequisites

Note Please check the different Lifetime Support for Autovue and Agile e6.1.1. The Agile e6.1.1 Integration is supported according to the Agile e6.1.1 lifetime support while the AutoVue Viewer itself might have a different lifetime support.

Please refer to the Oracle Website for more information on Lifetime Support Policy - <http://www.oracle.com/support/lifetime-support-policy.html>

View Server

- The AutoVue Web Edition 19.3.4. For installation instructions refer to the AutoVue documentation.

Note Currently only Windows 2003R2 32-bit is supported for the AutoVue Web Edition 19.3.4 for usage with the e6.1 AutoVue integration.

The Oracle AutoVue 19.3.4 Media Pack for Microsoft Windows (32-bit) can be found at the Oracle eDelivery web site at <http://edelivery.oracle.com>.

When selecting the 19.3.4 Media Pack for Microsoft Windows (32-bit) a list with downloadable components will be displayed. For the AutoVue Integration download the following components:

- Oracle AutoVue Electro-Mechanical Professional 19.3.4 for Microsoft Windows 32-bit

Note Each of the components listed above contains a Desktop and a Web edition. Please do NOT install the Desktop edition! Only the Web edition is supported with the Agile Engineering Data Management AutoVue Integration!

- A Servlet Engine for the VueLink servlet (containing the AutoVue Integration) and the optional AutoVue Proxy/VueServlet. For a list of valid servlet engines refer to the AutoVue Web Edition 19.3.4 documentation. We describe the setup with Tomcat 5.5.

Note Do NOT install the VueLink servlet in the same servlet engine where the e6.1 web fileservice is running.

Chapter 3

Installation

View Server

It is a prerequisite that the AutoVue Web Edition 19.3.4, and Tomcat 5.5 are already installed. If you want to activate tunneling with the AutoVue Integration, also the AutoVue Proxy/VueServlet as described in the AutoVue Web Edition 19.3.4 documentation must be available.

Note If you install Tomcat on the Agile e6.1.1 server you need to change the default Tomcat ports because there's already a Tomcat instance running. However, it is not recommended to install Tomcat for the View Server on the same server where Agile e6.1.1 is running.

To install VueLink Servlet component of the integration:

1. Copy/transfer the VueLink Servlet from Agile e6.1 Server to the View server. The VueLink Servlet is available as war file "VueLink.war" and ear file "VueLink-ear.ear" in the folder:
<ep_root>/axalant/bin/java/VueLink.war
<ep_root>/axalant/bin/java/VueLink-ear.ear

on the Agile e6.1.1 Server. For Tomcat you must use the VueLink.war file.

2. Copy the VueLink.war file to <tomcat_root>/webapps directory and restart tomcat.

To setup AutoVue GUI files:

1. Copy/transfer the zip file "AutoVueGuiFiles.zip " with the AutoVue Integration gui files from the PLM server to the View server. The file is available in the folder:
<ep_root>/installer/tmp/AutoVueGuiFiles.zip

on the Agile e6.1.1 Server.

2. To activate the GUI adaptations for the AutoVue Integration extract the content to a temporary directory and copy the files to the folder:
<autovue_root>/bin/profiles

on the View server.

Agile e6.1.1 Application Configuration

To use the AutoVue Integration some basic setup steps need to be performed in the dump. More detailed information about the configuration of the AutoVue Integration can be found in the "Manager Information" section of the online help for the AutoVue Integration module (pvm). The following values must be changed in order to use the AutoVue integration.

1. Start a JavaClient with a manager user and select "System > AutoVue > Configuration".

At least the following parameters must be adapted:

EDB-PVM-AV-PROXY:

Value e.g.: `http://<tomcat_server>:8080/VueServlet/servlet/VueServlet`

Description: The URL where you can reach the AutoVue tunneling servlet. Only necessary if EDB-PVM-AV-USE-PROXY is set to "true".

EDB-PVM-AV-USE-PROXY:

Value e.g.: true or false

Description: If you want to use HTTP(S) communication set this to true.

EDB-PVM-AV-SERVER:

Value e.g.: `socket://<AutoVue_server>:5099`

Description: The socket where the AutoVue server is waiting for requests

EDB-PVM-AV-DMS:

Value e.g.: `http://<tomcat_server>:8080/VueLink/Vuelink`

EDB-PVM-APPLET-BASE-URL:

Value e.g.: `http://<e61_oas_server>:<oas_port>/JVueApplet<inst_name>`

Description: The URL of the AutoVue Applet. The AutoVue Applet is deployed on the oracle application server of the e61 installation.

EDB-PVM-APPLET-ARCHIVES:

Description: The AutoVue Applet jars. The value should stay unchanged by default.

2. To test the configuration you can execute the following links in your browser:

VueServlet (Only if you setup the AutoVue tunnelling servlet):

e.g.: `http://<tomcat_server>:8080/VueServlet/servlet/VueServlet`

must show the tunnelling response page.

VueLink Servlet:

e.g.: `http://<tomcat_server>:8080/VueLink/Vuelink`

must show the Vuelink response page.

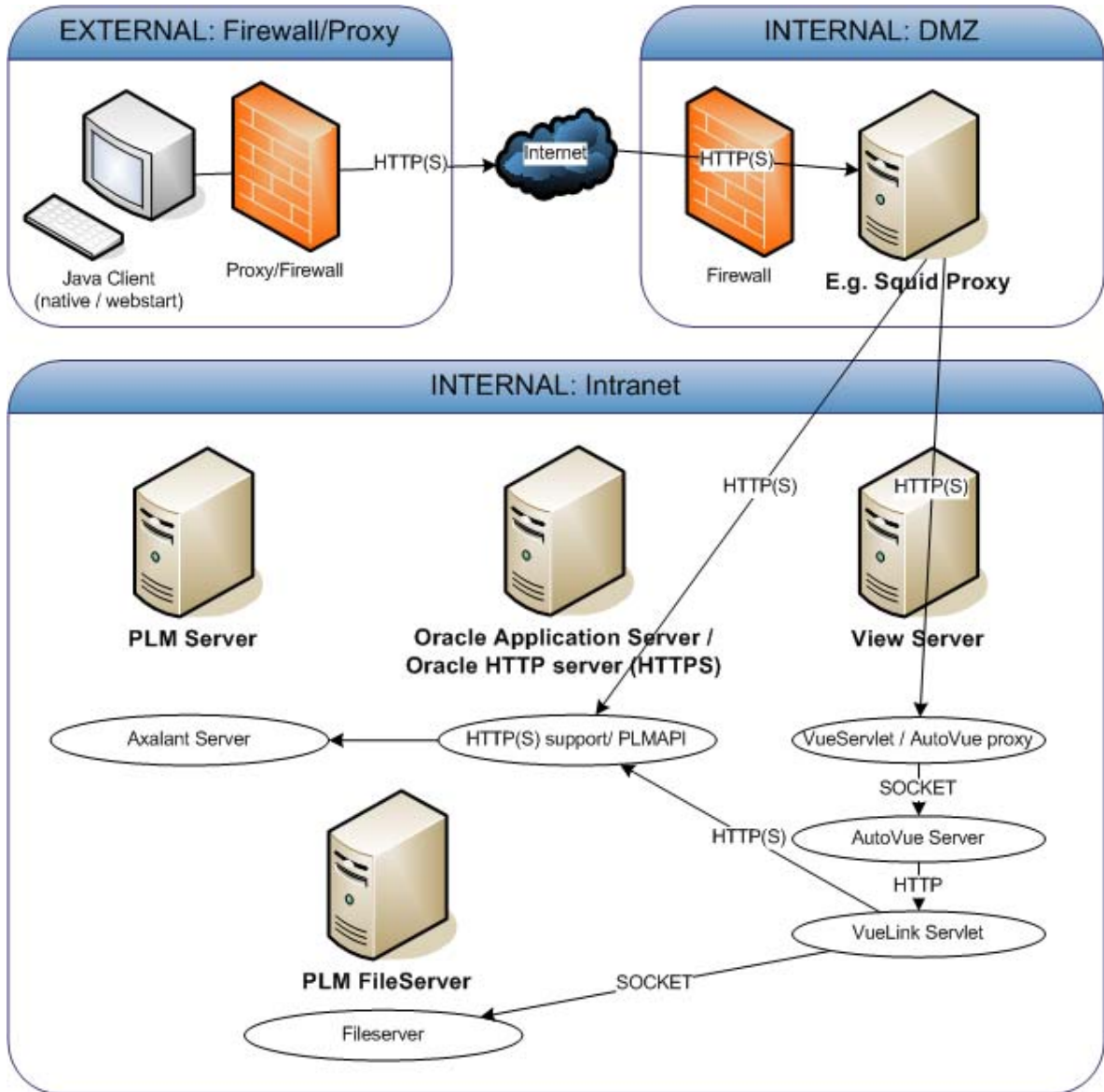
AutoVue Applet:

e.g.: `http://< e61_oas_server >/JVueApplet<installation name>/jvue.jar`

must popup the download dialog for the jar file.

Installation architecture with firewall

This is an extension to the default installation without firewall described at the beginning of this document.



For this installation changes on the Agile e6.1.1 Server and the View Server must be performed, also PLMAPI on the Agile e6.1.1 Oracle Application Server must be activated. How to setup the proxies outside the intranet is not part of this documentation.

Note You have to use a separate server for the View Server because the transformation of the native CAD data uses a lot of memory and CPU.

1. Set up the installation without firewall in the intranet as described in the section “Installation architecture without firewall”.
2. Install the AutoVue Proxy on the View Server. The AutoVue Proxy/VueServlet installation is described in the AutoVue Web Edition 19.3.4 documentation.
3. Perform the tasks described in the “Agile e6.1 application configuration” section, for each application. For this configuration set up the “EDB-PVM-AV-PROXY” and “EDB-PVM-AV-USE-PROXY” configuration parameters.
4. Activate HTTP(S) support in the Java Client. This is described in the section “Enabling HTTP(S) support”. For further information on how to set up a secure environment refer to the section “Secure Environment (HTTP(s) Support)” in the PLM611Admin.pdf of the Agile e6.1.1 documentation.
5. Test this configuration without firewall and proxy in DMZ.
6. Set up your firewall and proxy in DMZ. How to set up the firewall and proxy in the DMZ is your choice. As you can see in the above picture the HTTP(S) connections to the View Server and Oracle Application Server must be open.
7. Test the configuration.

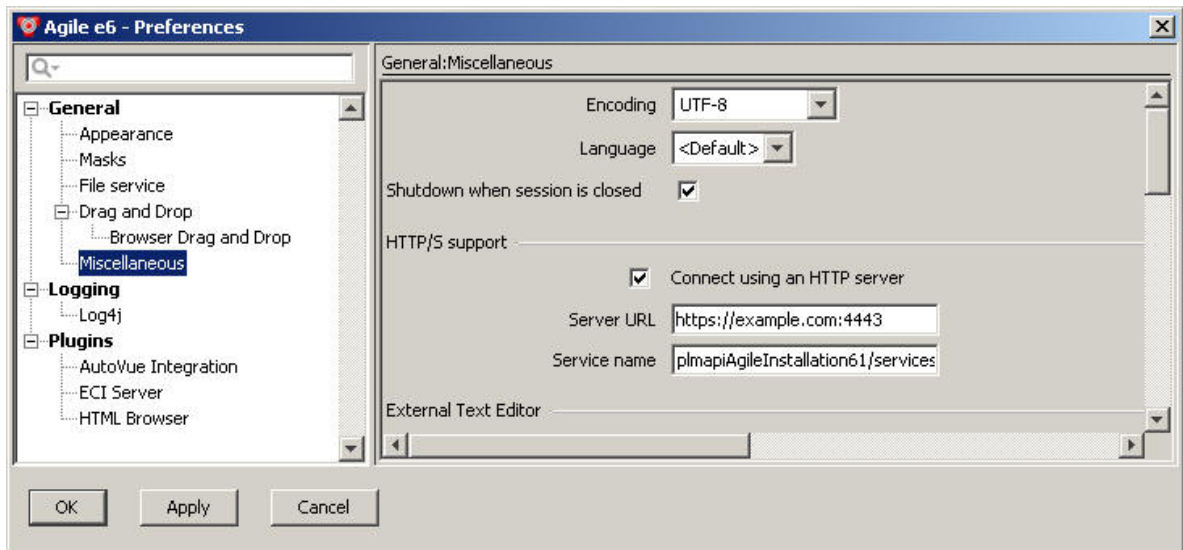
Enabling HTTP(S) support

If you want to use the installation architecture with firewall, the Java Client must be configured for this.

To enable HTTP(S) support in the JavaClient you have to activate/change the HTTP/S support setting.

1. Open the Java Client.
2. Open the Preferences mask.
3. Enable the HTTP/S support and change/add the Server URL and Service name to:
Server URL: `https://<fully qualified server name>:4443`
Service name: `plmapi-<your installation name>/services`

The following picture shows an example configuration.



Chapter 4

Installation of the Offline Metafile Cache Service

This section describes the manual installation of the Offline Metafile Cache Service.

Extract the Installation Package

The installation package of the Offline Metafile Cache Service is located on the package directory and named AutoVueBatch.zip.

1. Extract the package to your installation directory.

In this installation example the installation path is "C:\Program Files\Agile_e6\AutoVueBatch" (the AutoVueBatch path is the base path in the package)

2. Unzip z:\package\AutoVueBatch.zip -d "c:\Program Files\Agile_e6"

The installation package contains the following directories:

```
-> PDF Service Root      (C:\Program Files\Agile_e6\AutoVueBatch)
-> axalant
  -> cmd                  (scripts directory)
  -> batch                (Batch service files)
  -> bin
    -> intel-ms-nt5.0    (binaries like the FMS-Client)
    -> java              (e6.1 Java archives)
-> ext
  -> bin
    -> intel-ms-nt5.0    (external binaries)
    -> java              (external Java archives)
-> tmp                    (Logging directory)
```

Adapt the Installation

You need to adapt the start-up script to set up the Java-Runtime and the installation path of the Offline Metafile Cache Service. The script is located at the **axalant/cmd** sub directory of the installation.

The **vuelink_batch.bat** script contains the following basic configuration settings:

```
set JAVA_HOME=<JAVA_HOME>
set ep_root=<ROOT DIRECTORY OF THE OFFLINE METAFILE CACHE SERVICE>
```

Example:

```
set JAVA_HOME=C:\Program Files\Java\jdk1.5.0_16
set ep_root=C:\Program Files\Agile_e6\AutoVueBatch
```

Adapt the Service Settings

The **vuelink.properties** file is located at the **axalant/batch** sub directory of the installation. This file sets the environment variables needed by the Offline Metafile Cache Service.

The following properties must be adapted (the other properties should no be changed):

```
#
# ECI connection
#
host=<HOSTNAME OF THE ECI DAEMON>
port=<PORT OF THE ECI DAEMON>
env=<PLM APPLICATION ENVIRONMENT>
#
# Directories
#
varenv.ep_root=<ROOT DIRECTORY OF THE PDF SERVICE>
varenv.axalant_root=<AXALANT DIRECTORY OF THE PDF SERVICE>
varenv.$TMP=<PDF WORK DIRECTORY OF THE PDF SERVICE>
#
# Environment
#
varenv.EP_DDM_SITE=<DFM SITE>
#
# PLM Client
#
client1=<PLM USER>,<PASSWORD>,com.agile.AutoVue.VueLinkBatch
```

Example:

```
#
# ECI connection
#
host=khe-plm
port=20001
env=plm_ref
#
# Directories
#
varenv.ep_root=C:/Program Files/Agile_e6/AutoVueBatch
varenv.axalant_root=C:/Program Files/Agile_e6/AutoVueBatch/axalant
varenv.$TMP=C:/Program Files/Agile_e6/AutoVueBatch/tmp
#
# Environment
#
varenv.EP_DDM_SITE=ep
#
```

```
# PLM Client
#
client1=DEMOEP_M,not4test,com.agile.AutoVue.VueLinkBatch
```

Runtime

The Offline Metafile Cache Service uses the same mechanism as the Java-Daemon to install,remove,start,stop the service.

Install as Service

The configuration of the Windows Service registration can be found in the vuelink_wrapper.conf file which is located in the axalant/pdf sub directory of the installation.

```
*****
# Wrapper NT Service Properties
*****
# WARNING - Do not modify any of these properties when an application
# using this configuration file has been installed as a service.
# Please uninstall the service before modifying this section. The
# service can then be reinstalled.

# Name of the service
wrapper.ntservice.name=AgilePLM_AutoVue_Batch_Service

# Display name of the service
wrapper.ntservice.displayname=AgilePLM_AutoVue_Batch_Service

# Description of the service
wrapper.ntservice.description=Offline Metafile Cache for Agile PLM

# Service dependencies. Add dependencies as needed starting from 1
wrapper.ntservice.dependency.1=

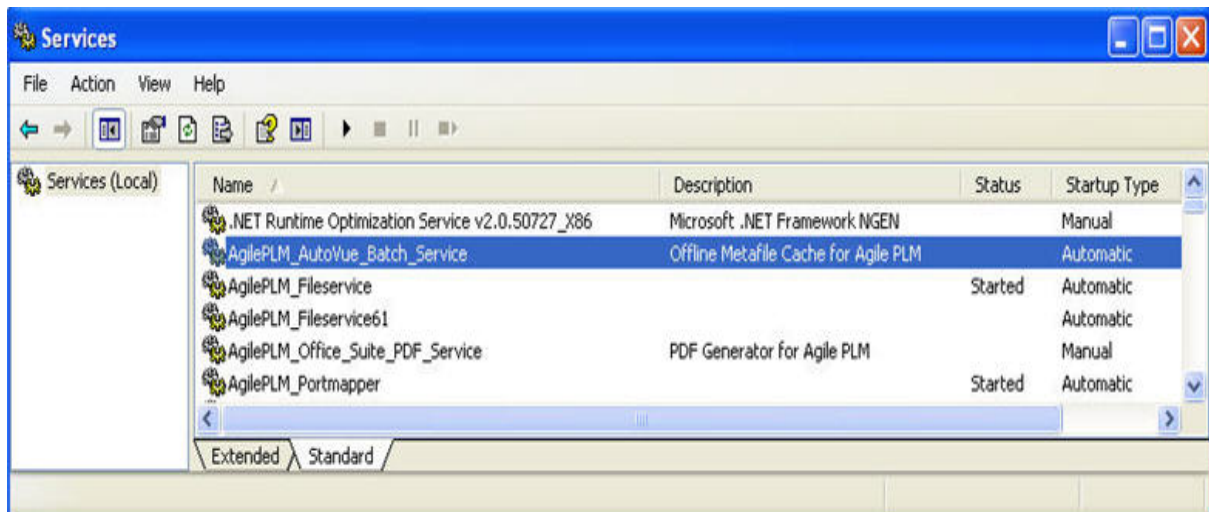
# Mode in which the service is installed. AUTO_START or DEMAND_START
wrapper.ntservice.starttype=AUTO_START

# Allow the service to interact with the desktop.
wrapper.ntservice.interactive=false

wrapper.ntservice.account=.\axalantrt
wrapper.ntservice.password=*****
```

To install the Offline Metafile Cache Service as Windows Service use the vuelink_batch.bat command script located in the axalant\cmd sub directory of the installation.

```
vuelink_batch.bat -i
```



Remove Service

To install the Offline Metafile Cache Service as Windows Service use the vuelink_batch.bat command script located in the axalant\cmd sub directory of the installation.

```
vuelink_batch.bat -r
```

Run as Console Application

To run the Offline Metafile Cache Service as console application use the vuelink_batch.bat command script located in the axalant\cmd sub directory of the installation.

```
vuelink_batch.bat -c
```

Chapter 5

Set Up the AutoVue Online Help

In order to make the AutoVue documentation available to your Online Help, first make sure to have set up the complete Agile e6.1.1 Online Help. For more detailed information on how to set up the Agile e6.1.1 Online Help please refer to the Administration Manual for Agile e6.1.1.

The Agile e.6.1.1 Online Help (...) can be downloaded from the Oracle eDelivery web site at:

<http://edelivery.oracle.com>

There are two types of online documentation for which the following procedures apply:

AutoVue for Java and Web Client

1. Download the hlp_e6.zip file to a directory of your choice.
2. Unzip the hlp_e6.zip file to the directory where your existing Agile e6.1.1 Online Help is located.

AutoVue for the Native Windows Client

1. Download the hlp_e6.1.1.zip file to a directory of your choice.
2. From that directory take the plm.chm and pvm.chm files and copy them to the directory where the files of your already existing Agile e6.1.1 Online help are located, thus overwriting the old plm.chm version.

Note If you have customized your Agile e6.1 Online Help, you need to pay attention not to overwrite any modified files by mistake when copying the plm.chm file!

The AutoVue documentation should now be available for both Java and Web Client as well as for the Native Windows Client.

