

Oracle® Documaker

Installing and Deploying iDocumaker

version 3.2

Part number: E16256-01

April 2010

Copyright © 2009, 2010, Oracle and/or its affiliates. All rights reserved.

The Programs (which include both the software and documentation) contain proprietary information; they are provided under a license agreement containing restrictions on use and disclosure and are also protected by copyright, patent, and other intellectual and industrial property laws. Reverse engineering, disassembly, or decompilation of the Programs, except to the extent required to obtain interoperability with other independently created software or as specified by law, is prohibited.

The information contained in this document is subject to change without notice. If you find any problems in the documentation, please report them to us in writing. This document is not warranted to be error-free. Except as may be expressly permitted in your license agreement for these Programs, no part of these Programs may be reproduced or transmitted in any form or by any means, electronic or mechanical, for any purpose.

If the Programs are delivered to the United States Government or anyone licensing or using the Programs on behalf of the United States Government, the following notice is applicable:

U.S. GOVERNMENT RIGHTS

Programs, software, databases, and related documentation and technical data delivered to U.S. Government customers are "commercial computer software" or "commercial technical data" pursuant to the applicable Federal Acquisition Regulation and agency-specific supplemental regulations. As such, use, duplication, disclosure, modification, and adaptation of the Programs, including documentation and technical data, shall be subject to the licensing restrictions set forth in the applicable Oracle license agreement, and, to the extent applicable, the additional rights set forth in FAR 52.227-19, Commercial Computer Software--Restricted Rights (June 1987). Oracle USA, Inc., 500 Oracle Parkway, Redwood City, CA 94065.

The Programs are not intended for use in any nuclear, aviation, mass transit, medical, or other inherently dangerous applications. It shall be the licensee's responsibility to take all appropriate fail-safe, backup, redundancy and other measures to ensure the safe use of such applications if the Programs are used for such purposes, and we disclaim liability for any damages caused by such use of the Programs.

The Programs may provide links to Web sites and access to content, products, and services from third parties. Oracle is not responsible for the availability of, or any content provided on, third-party Web sites. You bear all risks associated with the use of such content. If you choose to purchase any products or services from a third party, the relationship is directly between you and the third party. Oracle is not responsible for: (a) the quality of third-party products or services; or (b) fulfilling any of the terms of the agreement with the third party, including delivery of products or services and warranty obligations related to purchased products or services. Oracle is not responsible for any loss or damage of any sort that you may incur from dealing with any third party.

Oracle, JD Edwards, and PeopleSoft are registered trademarks of Oracle Corporation and/or its affiliates. Other names may be trademarks of their respective owners.

THIRD PARTY SOFTWARE NOTICES

This product includes software developed by Apache Software Foundation (<http://www.apache.org/>).

THIS SOFTWARE IS PROVIDED "AS IS" AND ANY EXPRESS OR IMPLIED WARRANTIES, INCLUDING, BUT NOT LIMITED TO, THE IMPLIED WARRANTIES OF MERCHANTABILITY AND FITNESS FOR A PARTICULAR PURPOSE ARE DISCLAIMED. IN NO EVENT SHALL THE AUTHOR OR CONTRIBUTORS BE LIABLE FOR ANY DIRECT, INDIRECT, INCIDENTAL, SPECIAL, EXEMPLARY, OR CONSEQUENTIAL DAMAGES (INCLUDING, BUT NOT LIMITED TO, PROCUREMENT OF SUBSTITUTE GOODS OR SERVICES; LOSS OF USE, DATA, OR PROFITS; OR BUSINESS INTERRUPTION) HOWEVER CAUSED AND ON ANY THEORY OF LIABILITY, WHETHER IN CONTRACT, STRICT LIABILITY, OR TORT (INCLUDING NEGLIGENCE OR OTHERWISE) ARISING IN ANY WAY OUT OF THE USE OF THIS SOFTWARE, EVEN IF ADVISED OF THE POSSIBILITY OF SUCH DAMAGE.

Copyright © 2000-2009 The Apache Software Foundation. All rights reserved.

This product includes software distributed via the Berkeley Software Distribution (BSD) and licensed for binary distribution under the Generic BSD license.

THIS SOFTWARE IS PROVIDED BY THE COPYRIGHT HOLDERS AND CONTRIBUTORS "AS IS" AND ANY EXPRESS OR IMPLIED WARRANTIES, INCLUDING, BUT NOT LIMITED TO, THE IMPLIED WARRANTIES OF MERCHANTABILITY AND FITNESS FOR A PARTICULAR PURPOSE ARE DISCLAIMED. IN NO EVENT SHALL THE COPYRIGHT OWNER OR CONTRIBUTORS BE LIABLE FOR ANY DIRECT, INDIRECT, INCIDENTAL, SPECIAL, EXEMPLARY, OR CONSEQUENTIAL DAMAGES (INCLUDING, BUT NOT LIMITED TO, PROCUREMENT OF SUBSTITUTE GOODS OR SERVICES; LOSS OF USE, DATA, OR PROFITS; OR BUSINESS INTERRUPTION) HOWEVER CAUSED AND ON ANY THEORY OF LIABILITY, WHETHER IN CONTRACT, STRICT LIABILITY, OR TORT (INCLUDING NEGLIGENCE OR OTHERWISE) ARISING IN ANY WAY OUT OF THE USE OF THIS SOFTWARE, EVEN IF ADVISED OF THE POSSIBILITY OF SUCH DAMAGE.

Copyright © 2009, Berkeley Software Distribution (BSD)

This product includes software developed by the JDOM Project (<http://www.jdom.org/>).

THIS SOFTWARE IS PROVIDED "AS IS" AND ANY EXPRESSED OR IMPLIED WARRANTIES, INCLUDING, BUT NOT LIMITED TO, THE IMPLIED WARRANTIES OF MERCHANTABILITY AND FITNESS FOR A PARTICULAR PURPOSE ARE DISCLAIMED. IN NO EVENT SHALL THE JDOM AUTHORS OR THE PROJECT CONTRIBUTORS BE LIABLE FOR ANY DIRECT, INDIRECT, INCIDENTAL, SPECIAL, EXEMPLARY, OR CONSEQUENTIAL DAMAGES (INCLUDING, BUT NOT LIMITED TO, PROCUREMENT OF SUBSTITUTE GOODS OR SERVICES; LOSS OF USE, DATA, OR PROFITS; OR BUSINESS INTERRUPTION) HOWEVER CAUSED AND ON ANY THEORY OF LIABILITY, WHETHER IN CONTRACT, STRICT LIABILITY, OR TORT (INCLUDING NEGLIGENCE OR OTHERWISE) ARISING IN ANY WAY OUT OF THE USE OF THIS SOFTWARE, EVEN IF ADVISED OF THE POSSIBILITY OF SUCH DAMAGE.

Copyright (C) 2000-2004 Jason Hunter & Brett McLaughlin. All rights reserved.

This product includes software developed by the Massachusetts Institute of Technology (MIT).

THE SOFTWARE IS PROVIDED "AS IS", WITHOUT WARRANTY OF ANY KIND, EXPRESS OR IMPLIED, INCLUDING BUT NOT LIMITED TO THE WARRANTIES OF MERCHANTABILITY, FITNESS FOR A PARTICULAR PURPOSE AND NONINFRINGEMENT. IN NO EVENT SHALL THE AUTHORS OR COPYRIGHT HOLDERS BE LIABLE FOR ANY CLAIM, DAMAGES OR OTHER LIABILITY, WHETHER IN AN ACTION OF CONTRACT, TORT OR OTHERWISE, ARISING FROM, OUT OF OR IN CONNECTION WITH THE SOFTWARE OR THE USE OR OTHER DEALINGS IN THE SOFTWARE.

Copyright © 2009 MIT

This product includes software developed by Jean-loup Gailly and Mark Adler. This software is provided 'as-is', without any express or implied warranty. In no event will the authors be held liable for any damages arising from the use of this software.

Copyright (c) 1995-2005 Jean-loup Gailly and Mark Adler

This software is based in part on the work of the Independent JPEG Group (<http://www.ijg.org/>).

This product includes software developed by the Dojo Foundation (<http://dojotoolkit.org>).

THIS SOFTWARE IS PROVIDED BY THE COPYRIGHT HOLDERS AND CONTRIBUTORS "AS IS" AND ANY EXPRESS OR IMPLIED WARRANTIES, INCLUDING, BUT NOT LIMITED TO, THE IMPLIED WARRANTIES OF MERCHANTABILITY AND FITNESS FOR A PARTICULAR PURPOSE ARE DISCLAIMED. IN NO EVENT SHALL THE COPYRIGHT OWNER OR CONTRIBUTORS BE LIABLE FOR ANY DIRECT, INDIRECT, INCIDENTAL, SPECIAL, EXEMPLARY, OR CONSEQUENTIAL DAMAGES (INCLUDING, BUT NOT LIMITED TO, PROCUREMENT OF SUBSTITUTE GOODS OR SERVICES; LOSS OF USE, DATA, OR PROFITS; OR BUSINESS INTERRUPTION) HOWEVER CAUSED AND ON ANY THEORY OF LIABILITY, WHETHER IN CONTRACT, STRICT LIABILITY, OR TORT (INCLUDING NEGLIGENCE OR OTHERWISE) ARISING IN ANY WAY OUT OF THE USE OF THIS SOFTWARE, EVEN IF ADVISED OF THE POSSIBILITY OF SUCH DAMAGE.

Copyright (c) 2005-2009, The Dojo Foundation. All rights reserved.

This product includes software developed by W3C.

Copyright © 2009 World Wide Web Consortium, (Massachusetts Institute of Technology, Institut National de Recherche en Informatique et en Automatique, Keio University). All Rights Reserved. (<http://www.w3.org/Consortium/Legal/>)

This product includes software developed by Mathew R. Miller (<http://www.bluecreststudios.com>).

Copyright (c) 1999-2002 ComputerSmarts. All rights reserved.

This product includes software developed by Shaun Wilde and distributed via Code Project Open License (<http://www.codeproject.com>).

THIS WORK IS PROVIDED "AS IS", "WHERE IS" AND "AS AVAILABLE", WITHOUT ANY EXPRESS OR IMPLIED WARRANTIES OR CONDITIONS OR GUARANTEES. YOU, THE USER, ASSUME ALL RISK IN ITS USE, INCLUDING COPYRIGHT INFRINGEMENT, PATENT INFRINGEMENT, SUITABILITY, ETC. AUTHOR EXPRESSLY DISCLAIMS ALL EXPRESS, IMPLIED OR STATUTORY WARRANTIES OR CONDITIONS, INCLUDING WITHOUT LIMITATION, WARRANTIES OR CONDITIONS OF MERCHANTABILITY, MERCHANTABLE QUALITY OR FITNESS FOR A PARTICULAR PURPOSE, OR ANY WARRANTY OF TITLE OR NON-INFRINGEMENT, OR THAT THE WORK (OR ANY PORTION THEREOF) IS CORRECT, USEFUL, BUG-FREE OR FREE OF VIRUSES. YOU MUST PASS THIS DISCLAIMER ON WHENEVER YOU DISTRIBUTE THE WORK OR DERIVATIVE WORKS.

This product includes software developed by Chris Maunder and distributed via Code Project Open License (<http://www.codeproject.com>).

THIS WORK IS PROVIDED "AS IS", "WHERE IS" AND "AS AVAILABLE", WITHOUT ANY EXPRESS OR IMPLIED WARRANTIES OR CONDITIONS OR GUARANTEES. YOU, THE USER, ASSUME ALL RISK IN ITS USE, INCLUDING COPYRIGHT INFRINGEMENT, PATENT INFRINGEMENT, SUITABILITY, ETC. AUTHOR EXPRESSLY DISCLAIMS ALL EXPRESS, IMPLIED OR STATUTORY WARRANTIES OR CONDITIONS, INCLUDING WITHOUT LIMITATION, WARRANTIES OR CONDITIONS OF MERCHANTABILITY, MERCHANTABLE QUALITY OR FITNESS FOR A PARTICULAR PURPOSE, OR ANY WARRANTY OF TITLE OR NON-INFRINGEMENT, OR THAT THE WORK (OR ANY PORTION THEREOF) IS CORRECT, USEFUL, BUG-FREE OR FREE OF VIRUSES. YOU MUST PASS THIS DISCLAIMER ON WHENEVER YOU DISTRIBUTE THE WORK OR DERIVATIVE WORKS.

This product includes software developed by PJ Arends and distributed via Code Project Open License (<http://www.codeproject.com>).

THIS WORK IS PROVIDED "AS IS", "WHERE IS" AND "AS AVAILABLE", WITHOUT ANY EXPRESS OR IMPLIED WARRANTIES OR CONDITIONS OR GUARANTEES. YOU, THE USER, ASSUME ALL RISK IN ITS USE, INCLUDING COPYRIGHT INFRINGEMENT, PATENT INFRINGEMENT, SUITABILITY, ETC. AUTHOR EXPRESSLY DISCLAIMS ALL EXPRESS, IMPLIED OR STATUTORY WARRANTIES OR CONDITIONS, INCLUDING WITHOUT LIMITATION, WARRANTIES OR CONDITIONS OF MERCHANTABILITY, MERCHANTABLE QUALITY OR FITNESS FOR A PARTICULAR PURPOSE, OR ANY WARRANTY OF TITLE OR NON-INFRINGEMENT, OR THAT THE WORK (OR ANY PORTION THEREOF) IS CORRECT, USEFUL, BUG-FREE OR FREE OF VIRUSES. YOU MUST PASS THIS DISCLAIMER ON WHENEVER YOU DISTRIBUTE THE WORK OR DERIVATIVE WORKS.

This product includes software developed by Erwin Tratar. This source code and all accompanying material is copyright (c) 1998-1999 Erwin Tratar. All rights reserved.

THIS SOFTWARE IS PROVIDED "AS IS" WITHOUT EXPRESS OR IMPLIED WARRANTY. USE IT AT YOUR OWN RISK! THE AUTHOR ACCEPTS NO LIABILITY FOR ANY DAMAGE/LOSS OF BUSINESS THAT THIS PRODUCT MAY CAUSE.

This product includes software developed by Sam Leffler of Silicon Graphics.

THE SOFTWARE IS PROVIDED "AS-IS" AND WITHOUT WARRANTY OF ANY KIND, EXPRESS, IMPLIED OR OTHERWISE, INCLUDING WITHOUT LIMITATION, ANY WARRANTY OF MERCHANTABILITY OR FITNESS FOR A PARTICULAR PURPOSE.

IN NO EVENT SHALL SAM LEFFLER OR SILICON GRAPHICS BE LIABLE FOR ANY SPECIAL, INCIDENTAL, INDIRECT OR CONSEQUENTIAL DAMAGES OF ANY KIND, OR ANY DAMAGES WHATSOEVER RESULTING FROM LOSS OF USE, DATA OR PROFITS, WHETHER OR NOT ADVISED OF THE POSSIBILITY OF DAMAGE, AND ON ANY THEORY OF LIABILITY, ARISING OUT OF OR IN CONNECTION WITH THE USE OR PERFORMANCE OF THIS SOFTWARE

Copyright (c) 1988-1997 Sam Leffler
Copyright (c) 1991-1997 Silicon Graphics, Inc.

This product includes software developed by Guy Eric Schalnat, Andreas Dilger, Glenn Randers-Pehrson (current maintainer), and others. (<http://www.libpng.org>)

The PNG Reference Library is supplied "AS IS". The Contributing Authors and Group 42, Inc. disclaim all warranties, expressed or implied, including, without limitation, the warranties of merchantability and of fitness for any purpose. The Contributing Authors and Group 42, Inc. assume no liability for direct, indirect, incidental, special, exemplary, or consequential damages, which may result from the use of the PNG Reference Library, even if advised of the possibility of such damage.

This product includes software components distributed by the Cryptix Foundation.

THIS SOFTWARE IS PROVIDED BY THE CRYPTIX FOUNDATION LIMITED AND CONTRIBUTORS "AS IS" AND ANY EXPRESS OR IMPLIED WARRANTIES, INCLUDING, BUT NOT LIMITED TO, THE IMPLIED WARRANTIES OF MERCHANTABILITY AND FITNESS FOR A PARTICULAR PURPOSE ARE DISCLAIMED. IN NO EVENT SHALL THE CRYPTIX FOUNDATION LIMITED OR CONTRIBUTORS BE LIABLE FOR ANY DIRECT, INDIRECT, INCIDENTAL, SPECIAL, EXEMPLARY, OR CONSEQUENTIAL DAMAGES (INCLUDING, BUT NOT LIMITED TO, PROCUREMENT OF SUBSTITUTE GOODS OR SERVICES; LOSS OF USE, DATA, OR PROFITS; OR BUSINESS INTERRUPTION) HOWEVER CAUSED AND ON ANY THEORY OF LIABILITY, WHETHER IN CONTRACT, STRICT LIABILITY, OR TORT (INCLUDING NEGLIGENCE OR OTHERWISE) ARISING IN ANY WAY OUT OF THE USE OF THIS SOFTWARE, EVEN IF ADVISED OF THE POSSIBILITY OF SUCH DAMAGE

Copyright © 1995-2005 The Cryptix Foundation Limited. All rights reserved.

This product includes software components distributed by Sun Microsystems.

This software is provided "AS IS," without a warranty of any kind. ALLEXPRESS OR IMPLIED CONDITIONS, REPRESENTATIONS AND WARRANTIES, INCLUDING ANY IMPLIED WARRANTY OF MERCHANTABILITY, FITNESS FOR A PARTICULAR PURPOSE OR NON-INFRINGEMENT, ARE HEREBY EXCLUDED. SUN AND ITS LICENSORS SHALL NOT BE LIABLE FOR ANY DAMAGES SUFFERED BY LICENSEE AS A RESULT OF USING, MODIFYING OR DISTRIBUTING THE SOFTWARE OR ITS DERIVATIVES. IN NO EVENT WILL SUN OR ITS LICENSORS BE LIABLE FOR ANY LOST REVENUE, PROFIT OR DATA, OR FOR DIRECT, INDIRECT, SPECIAL, CONSEQUENTIAL, INCIDENTAL OR PUNITIVE DAMAGES, HOWEVER CAUSED AND REGARDLESS OF THE THEORY OF LIABILITY, ARISING OUT OF THE USE OF OR INABILITY TO USE SOFTWARE, EVEN IF SUN HAS BEEN ADVISED OF THE POSSIBILITY OF SUCH DAMAGES.

Copyright (c) 1998 Sun Microsystems, Inc. All Rights Reserved.

This product includes software components distributed by Dennis M. Sosnoski.

THIS SOFTWARE IS PROVIDED BY THE COPYRIGHT HOLDERS AND CONTRIBUTORS "AS IS" AND ANY EXPRESS OR IMPLIED WARRANTIES, INCLUDING, BUT NOT LIMITED TO, THE IMPLIED WARRANTIES OF MERCHANTABILITY AND FITNESS FOR A PARTICULAR PURPOSE ARE DISCLAIMED. IN NO EVENT SHALL THE COPYRIGHT OWNER OR CONTRIBUTORS BE LIABLE FOR ANY DIRECT, INDIRECT, INCIDENTAL, SPECIAL, EXEMPLARY, OR CONSEQUENTIAL DAMAGES (INCLUDING, BUT NOT LIMITED TO, PROCUREMENT OF SUBSTITUTE GOODS OR SERVICES; LOSS OF USE, DATA, OR PROFITS; OR BUSINESS INTERRUPTION) HOWEVER CAUSED AND ON ANY THEORY OF LIABILITY, WHETHER IN CONTRACT, STRICT LIABILITY, OR TORT (INCLUDING NEGLIGENCE OR OTHERWISE) ARISING IN ANY WAY OUT OF THE USE OF THIS SOFTWARE, EVEN IF ADVISED OF THE POSSIBILITY OF SUCH DAMAGE.

Copyright © 2003-2007 Dennis M. Sosnoski. All Rights Reserved

It also includes materials licensed under Apache 1.1 and the following XPP3 license

THIS SOFTWARE IS PROVIDED "AS IS" AND ANY EXPRESSED OR IMPLIED WARRANTIES, INCLUDING, BUT NOT LIMITED TO, THE IMPLIED WARRANTIES OF MERCHANTABILITY AND FITNESS FOR A PARTICULAR PURPOSE ARE DISCLAIMED. IN NO EVENT SHALL THE COPYRIGHT OWNER OR CONTRIBUTORS BE LIABLE FOR ANY DIRECT, INDIRECT, INCIDENTAL, SPECIAL, EXEMPLARY, OR CONSEQUENTIAL DAMAGES (INCLUDING, BUT NOT LIMITED TO, PROCUREMENT OF SUBSTITUTE GOODS OR SERVICES; LOSS OF USE, DATA, OR PROFITS; OR BUSINESS INTERRUPTION) HOWEVER CAUSED AND ON ANY THEORY OF LIABILITY, WHETHER IN CONTRACT, STRICT LIABILITY, OR TORT (INCLUDING NEGLIGENCE OR OTHERWISE) ARISING IN ANY WAY OUT OF THE USE OF THIS SOFTWARE, EVEN IF ADVISED OF THE POSSIBILITY OF SUCH DAMAGE.

Copyright © 2002 Extreme! Lab, Indiana University. All Rights Reserved

This product includes software components distributed by CodeProject. This software contains material that is © 1994-2005 The Ultimate Toolbox, all rights reserved.

This product includes software components distributed by Geir Landro.

Copyright © 2001-2003 Geir Landro (drop@destroydrop.com) JavaScript Tree - [www.destroydrop.com/hjjavascripts/tree/version 0.96](http://www.destroydrop.com/hjjavascripts/tree/version0.96)

This product includes software components distributed by the Hypersonic SQL Group.

THIS SOFTWARE IS PROVIDED BY THE COPYRIGHT HOLDERS AND CONTRIBUTORS "AS IS" AND ANY EXPRESS OR IMPLIED WARRANTIES, INCLUDING, BUT NOT LIMITED TO, THE IMPLIED WARRANTIES OF MERCHANTABILITY AND FITNESS FOR A PARTICULAR PURPOSE ARE DISCLAIMED. IN NO EVENT SHALL THE COPYRIGHT OWNER OR CONTRIBUTORS BE LIABLE FOR ANY DIRECT, INDIRECT, INCIDENTAL, SPECIAL, EXEMPLARY, OR CONSEQUENTIAL DAMAGES (INCLUDING, BUT NOT LIMITED TO, PROCUREMENT OF SUBSTITUTE GOODS OR SERVICES; LOSS OF USE, DATA, OR PROFITS; OR BUSINESS INTERRUPTION) HOWEVER CAUSED AND ON ANY THEORY OF LIABILITY, WHETHER IN CONTRACT, STRICT LIABILITY, OR TORT (INCLUDING NEGLIGENCE OR OTHERWISE) ARISING IN ANY WAY OUT OF THE USE OF THIS SOFTWARE, EVEN IF ADVISED OF THE POSSIBILITY OF SUCH DAMAGE

Copyright © 1995-2000 by the Hypersonic SQL Group. All Rights Reserved

This product includes software components distributed by the International Business Machines Corporation and others.

THE SOFTWARE IS PROVIDED "AS IS", WITHOUT WARRANTY OF ANY KIND, EXPRESS OR IMPLIED, INCLUDING BUT NOT LIMITED TO THE WARRANTIES OF MERCHANTABILITY, FITNESS FOR A PARTICULAR PURPOSE AND NONINFRINGEMENT. IN NO EVENT SHALL THE AUTHORS OR COPYRIGHT HOLDERS BE LIABLE FOR ANY CLAIM, DAMAGES OR OTHER LIABILITY, WHETHER IN AN ACTION OF CONTRACT, TORT OR OTHERWISE, ARISING FROM, OUT OF OR IN CONNECTION WITH THE SOFTWARE OR THE USE OR OTHER DEALINGS IN THE SOFTWARE.

Copyright (c) 1995-2009 International Business Machines Corporation and others. All rights reserved.

This product includes software components distributed by the University of Coimbra.

University of Coimbra distributes this software in the hope that it will be useful but DISCLAIMS ALL WARRANTIES WITH REGARD TO IT, including all implied warranties of MERCHANTABILITY or FITNESS FOR A PARTICULAR PURPOSE. In no event shall University of Coimbra be liable for any special, indirect or consequential damages (or any damages whatsoever) resulting from loss of use, data or profits, whether in an action of contract, negligence or other tortious action, arising out of or in connection with the use or performance of this software.

Copyright (c) 2000 University of Coimbra, Portugal. All Rights Reserved.

This product includes software components distributed by Steve Souza.

THIS SOFTWARE IS PROVIDED BY THE AUTHOR AND CONTRIBUTORS "AS IS" AND ANY EXPRESS OR IMPLIED WARRANTIES, INCLUDING, BUT NOT LIMITED TO, THE IMPLIED WARRANTIES OF MERCHANTABILITY AND FITNESS FOR A PARTICULAR PURPOSE ARE DISCLAIMED. IN NO EVENT SHALL THE COPYRIGHT OWNER OR CONTRIBUTORS BE LIABLE FOR ANY DIRECT, INDIRECT, INCIDENTAL, SPECIAL, EXEMPLARY, OR CONSEQUENTIAL DAMAGES (INCLUDING, BUT NOT LIMITED TO, PROCUREMENT OF SUBSTITUTE GOODS OR SERVICES; LOSS OF USE, DATA, OR PROFITS; OR BUSINESS INTERRUPTION) HOWEVER CAUSED AND ON ANY THEORY OF LIABILITY, WHETHER IN CONTRACT, STRICT LIABILITY, OR TORT (INCLUDING NEGLIGENCE OR OTHERWISE) ARISING IN ANY WAY OUT OF THE USE OF THIS SOFTWARE, EVEN IF ADVISED OF THE POSSIBILITY OF SUCH DAMAGE.

Copyright © 2002, Steve Souza (admin@jamonapi.com). All Rights Reserved.

This product includes software developed by the OpenSymphony Group (<http://www.opensymphony.com/>.)"

Copyright © 2001-2004 The OpenSymphony Group. All Rights Reserved.

Contents

Setting Up iDocumaker

- 2 Requirements
- 4 Updating Third-Party Libraries
 - 5 Using the Script
 - 7 Using the Patch Script
 - 8 Without a Script
- 10 Installing iDocumaker
 - 11 Installing under Tomcat 5.5.2x
 - 12 Installing under Tomcat 6.x
 - 13 Installing under WebSphere 6.1
 - 14 Setting Up Security
 - 17 Setting Up an IBM HTTP Web Server
 - 21 Deploying the EAR File
 - 26 Mapping Security Roles
 - 28 Managing the Web Module
 - 30 Setting Up the WAS Plug-in
 - 32 Testing the iDocumaker Web Application
- 34 OpenLDAP Security Settings
- 35 Index

Setting Up iDocumaker

iDocumaker is one of the presentation components from Oracle Insurance. It lets you easily add and modify data in the other Oracle Insurance applications through a rich, web 2.0 graphical interface.

iDocumaker uses much of the Java™ 2 Platform, Enterprise Edition (J2EE) framework for powerful features such as reliability, strong security, extensibility, standards based, maintainability and scalability.

Using these, it therefore needs to be installed under a J2EE-compliant web container. This document describes the basic installation and configuration steps necessary to install the iDocumaker product under the approved web containers. This document also tell you how to find and install the various third-party libraries iDocumaker uses.

NOTE: This document is designed for an initial installation of iDocumaker. If you are updating iDocumaker, check with your system administrator for details on how iDocumaker was initially set up and customized.

Before you begin you should be familiar with the security settings for your system and how to modify them.

You will find information on these topics in this chapter:

- [Requirements on page 2](#)
- [Updating Third-Party Libraries on page 4](#)
- [Installing iDocumaker on page 10](#)
- [OpenLDAP Security Settings on page 34](#)

REQUIREMENTS

Your computer must have certain software and hardware components to run iDocumaker. This table outlines those requirements:

Basic requirements

	Requirements
Operating system	Windows XP, Windows 2003 Server, Linux, AIX, and Sun Solaris
Java Runtime Environment (JRE)	version 1.5 or higher
Physical memory/JVM heap memory*	1024MB/256MB RAM
Hard disk**	100 MB free
Other components	Keyboard and mouse or compatible pointing device
Monitor	Color SVGA monitor

* Additional memory will improve system performance.

** The amount of hard disk space you will need depends mainly on the volume of data you must process.

NOTE: To test your iDocumaker implementation, you need a Documaker Studio master resource library (MRL).

Client requirements

In addition to the basic requirements, each client should have the following:

- WIP Edit, version 11.3, patch 05 or higher
- Microsoft Windows XP Professional or later
- Adobe Acrobat Reader 7.0 or higher
- Microsoft Internet Explorer 7.0 or higher with these Internet security options enabled:
 - Run ActiveX controls and plug-ins
 - Script ActiveX controls safe for scripting
 - Allow cookies that are stored on your computer
 - Allow per-session cookies (not stored)
 - Active scripting

Server requirements

In addition to the basic and client requirements, the computer you will use as a server should be configured with the following:

- Apache Tomcat, or IBM WebSphere MQ (formerly MQSeries)
- A database such as Oracle version 8i or higher, Microsoft SQL 2000 or higher, IBM DB2 version 8.1 or higher, Sun MySQL version 4.3 or higher, or other JDBC version 2.0-supported databases
- Application servers that support the J2EE 1.4 specification. We test on Tomcat version 5.5 and WebSphere MQ version 6.1.

Application server requirements

In addition to the basic requirements, for the application server, you should have:

- Windows Server (Tomcat plug-in), Tomcat version 5.5 or higher, or WebSphere MQ version 6.1
- One of these message buses:
 - WebSphere MQ
 - JMS
 - ActiveMQ
 - MSMQ
 - HTTP
- A database such as Oracle version 8i or higher, Microsoft SQL 2000 or higher, IBM DB2 version 8.1 or higher, Sun MySQL version 4.3 or higher, or other JDBC version 2.0-supported databases
- Docupresentment version 2.2 or higher

NOTE: We test iDocumaker version 3.2 implementations on WebSphere Application Server (WAS) version 6.1.x and Tomcat 6.x Application Server.

Using the right Java environment

This table shows various application servers we have tested with and the Java version you should use with those web servers and with iDocumaker.

For	Use
Tomcat 5.5 (or higher)	Tomcat using Java 1.5 (iDocumaker using the Servlet Specification 2.4 or higher)
WebSphere Application Server 6.1.x	WebSphere Application Server using Java 1.5 (iDocumaker using the J2EE standard 1.4)

Additional recommendations

We also recommend these additional products for your iDocumaker implementation:

Product	Description
Documaker	Use for rules publishing.

UPDATING THIRD-PARTY LIBRARIES

Due to licensing restrictions Oracle Insurance does not distribute the third-party libraries needed for iDocumaker. These libraries include:

- HotSAX - An open source SAX2 parser for HTML, XHTML, and XML files.
- Jericho HTML Parser - An open source library that lets you analyze and manipulate HTML documents.
- ShiftOne Cache - An open source library that applies object caching policies.

This topic will help you find, download, and patch these libraries into your iDocumaker war or ear file.

Before you begin, make sure you have...

- An iDocumaker 3.2 war or ear file
- The iDocumaker patch script or a compression utility such as WinZip® or WinRAR. For more information on the patch script, see [Using the Patch Script on page 7](#).

The patch script requires the Java Runtime Environment (JRE) version 1.4 or higher. The patch script is designed for Windows but anyone familiar with Apache Ant can open the script and use it on any platform Apache Ant is supported.

NOTE: If WinZip® has a problem with the format of the file, use WinRAR or another compression utility.

You can patch third-party libraries two ways:

- [Using the Script on page 5](#)
- [Without a Script on page 8](#)

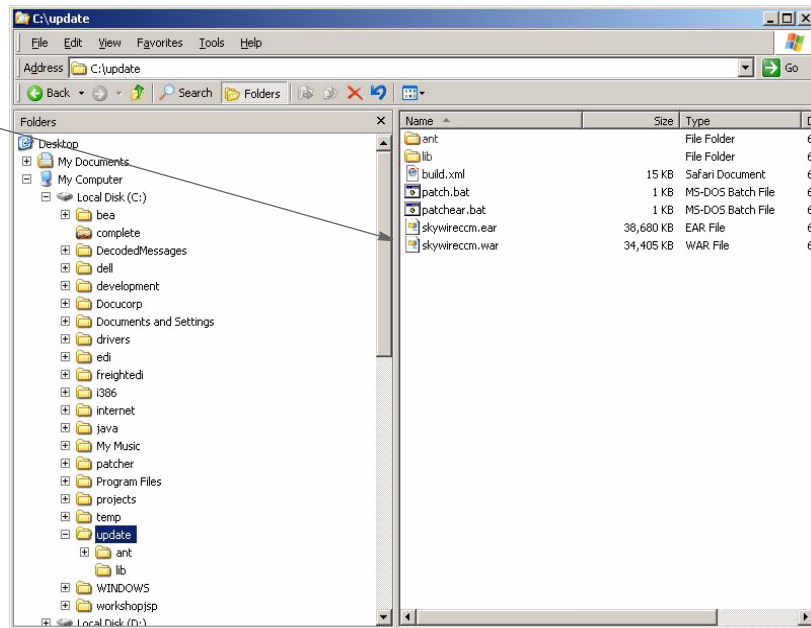
Instructions for each method follow.

USING THE SCRIPT

Follow these instructions to use the patch script to update the various third-party libraries iDocumaker needs. For more information on the patch script, see [Using the Patch Script on page 7](#).

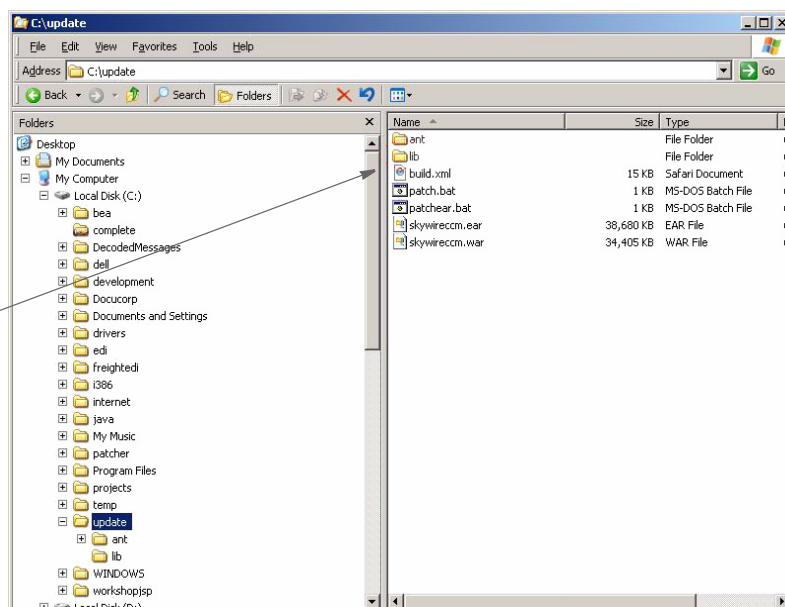
- 1 Unzip the update.zip to a directory on the host machine. It will create an \update subdirectory. Then copy the CCM war file into this directory.

Here is the CCM war file



- 2 Download the following third-party libraries. Place these libraries in the update\lib directory.

Place the third-party libraries into the /update/lib directory



HotSAX

Download HotSAX, version 1.2c from this site:

http://sourceforge.net/project/showfiles.php?group_id=29085&package_id=21409&release_id=87917

Unzip it into a temporary directory. Then copy the following .jar file from the temporary directory into the update\WEB-INF\lib directory:

..\HotSAX-0.1.2c\hotsax.jar

Jericho HTML Parser

Download the Jericho HTML Parser version 1.2 from this site:

http://downloads.sourceforge.net/jerichohtml/jericho-html-1.2.zip?modtime=1087344000&big_mirror=0

Unzip it into a temporary directory. Then copy the following .jar file from the temporary directory into the update\WEB-INF\lib directory.

..\jericho-html-1.2\Jericho-html-1.2.jar

ShiftOne Cache

Download ShiftOne Cache version 1.2 from this site:

http://downloads.sourceforge.net/jocache/shiftone-cache-1.2.zip?modtime=1064880000&big_mirror=0

Unzip it into a temporary directory. Then copy the following .jar file from the temporary directory into the WEB-INF\lib directory of your exploded WAR directory.

..\shiftone-cache-1.2\dist\shiftone-cache.jar

3 The next step varies, depending on if you are patching a war or ear file:

If you are patching Double-click this file:

A war file	patch.bat
An ear file	patchear.bat

NOTE: If you have any problems, try the steps in [Without a Script on page 8](#).

Using the Patch Script

If you renamed your war or ear file and within the ear or war file you want the jar libraries loaded from a different location, you can do this by passing parameters via the patch script. Here is an example:

```
patch -Dwar testwar.war -Dlib.dir lib2
```

Parameter	Description
-Dwar warname or -Dear earname	The name and/or path/name of the war file or war within the ear file. The default is skywireccm.war. The name and/or path/name of the ear file to use. The default is skywireccm.ear.
-Dlib.dir lib directory	The path, relative or absolute, to the directory that contains the third-party jar files needed by iDocumaker.

This example patches the testwar.war file with the third-party libraries found in the relative directory named \lib2. The example output is shown below.

```
C:\WINDOWS\system32\cmd.exe
Volume Serial Number is 6849-0237

Directory of C:\update

06/26/2008  05:10 PM  <DIR>          .
06/26/2008  05:10 PM  <DIR>          ..
06/26/2008  09:33 AM  <DIR>          ant
06/26/2008  02:15 PM             14,515 build.xml
06/26/2008  01:56 PM  <DIR>          lib1
06/26/2008  05:04 PM  <DIR>          lib2
06/26/2008  05:08 PM             77 patch.bat
06/26/2008  05:03 PM             41 patchear.bat
06/26/2008  01:34 PM      39,608,061 skywireccm.ear
06/26/2008  01:36 PM      35,230,004 skywireccm.war
06/26/2008  01:36 PM      35,230,004 testwar.war
               6 File(s)      110,082,702 bytes
               5 Dir(s)      8,051,613,696 bytes free

C:\update>patch -Dwar testwar.war -Dlib.dir lib2
-Dwar
testwar.war
-Dlib.dir
lib2
Buildfile: build.xml

update:
[mkdir] Created dir: C:\update\build
[unzip] Expanding: C:\update\testwar.war into C:\update\build
[copy] Copying 3 files to C:\update\build\WEB-INF\lib
[delete] Deleting: C:\update\testwar.war
[jar] Building jar: C:\update\testwar.war
[delete] Deleting directory C:\update\build

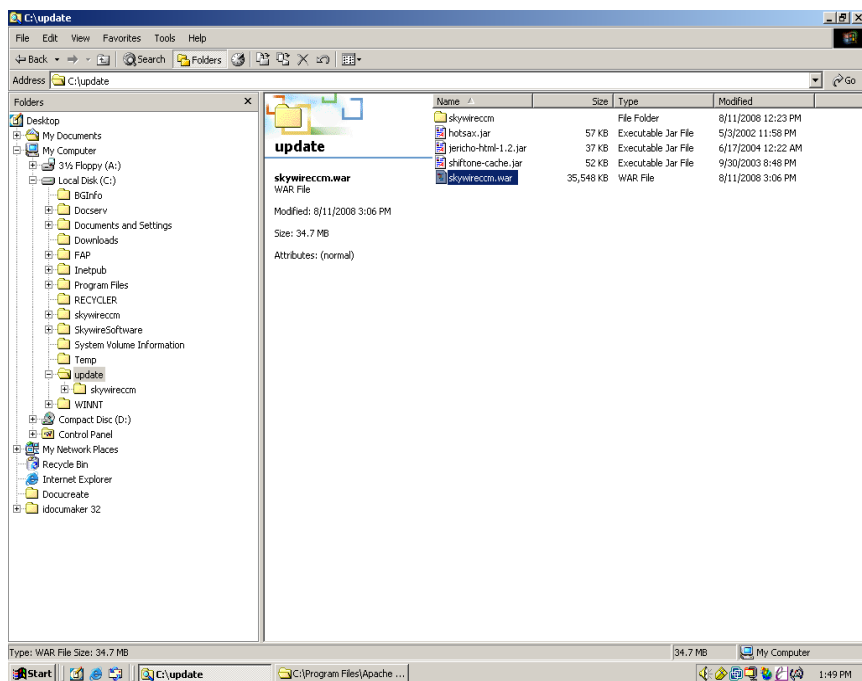
BUILD SUCCESSFUL
Total time: 36 seconds
C:\update>
```

You can see that there is no lib directory, just \lib1 and \lib2 so there is no possibility of confusion. You can see it using testwar.war in the output.

WITHOUT A SCRIPT

Follow these steps to get the third-party libraries without using the script:

- 1 Create a directory named `\update`.
- 2 Unzip the deployable war or ear file into this directory.



If you are using an ear file, you will see a war file and a META-INF directory. Create a war directory and unzip into that. This is now your exploded WAR directory.

- 3 Download the following third-party libraries:

HotSAX

Download HotSAX, version 1.2c from this site:

http://sourceforge.net/project/showfiles.php?group_id=29085&package_id=21409&release_id=87917

Unzip it into a temporary directory. Then copy the following .jar file from the temporary directory into the `update\WEB-INF\lib` directory:

```
..\HotSAX-0.1.2c\hotsax.jar
```

Jericho HTML Parser

Download the Jericho HTML Parser, version 1.2 from this site:

http://downloads.sourceforge.net/jerichohtml/jericho-html-1.2.zip?modtime=1087344000&big_mirror=0

Unzip it into a temporary directory. Then copy the following .jar file from the temporary directory into the `update\WEB-INF\lib` directory.

```
..\jericho-html-1.2\Jericho-html-1.2.jar
```

ShiftOne Cache

Download ShiftOne Cache, version 1.2 from this site:

http://downloads.sourceforge.net/jocache/shiftone-cache-1.2.zip?modtime=1064880000&big_mirror=0

Unzip it into a temporary directory. Then copy the following .jar file from the temporary directory into the WEB-INF\lib directory of your exploded WAR directory.

```
..\shiftone-cache-1.2\dist\shiftone-cache.jar
```

- 4** The next step varies, depending on if you are patching a war or ear file:

If you are using	Then
A war file	Use a compression utility to zip/jar/tar up the WAR directory. Make sure the path names stay intact relative to the root of the exploded war directory without including the exploded war directory name. This file should be named <i>skywireccm.war</i> .
An ear file	Delete the exploded WAR directory but keep the new skywireccm.war and zip/jar/tar it up with the META-INF directory into a new ear file named as it was; <i>skywireccm.ear</i> .

INSTALLING IDOCUMAKER

This document describes using different web application servers and/or security configurations. It also discusses configuring iDocumaker security for LDAP servers, but only on the certified web application servers.

For all other containers, or for more information on the certified web application containers (or server), refer to your container's documentation.

This document discusses these main functions:

- Deployment of the iDocumaker application on approved web application containers.
- Configuring the web application container for your LDAP server.

This document does not discuss...

- Any other aspect of your application server's configuration, including alternative security configurations. iDocumaker uses the J2EE security framework. The administrator should be able to use the application server's configuration to hook into the necessary security framework. iDocumaker supports LDAP on the approved application servers.
- Application servers beyond those listed in [Requirements on page 2](#). Administrators of a J2EE web application container should be able to take what is given here and apply it to their servers.
- Hardware requirements, their configurations, or clustering.

These installations are covered in this topic:

- [Installing under Tomcat 5.5.2x on page 11](#)
- [Installing under Tomcat 6.x on page 12](#)
- [Installing under WebSphere 6.1 on page 13](#)

INSTALLING UNDER TOMCAT 5.5.2X

Security By default, Tomcat connects to a local LDAP server for its security configuration. The security configuration is built into the war file in the file under the META-INF/context.xml file.

Take the contents of this context.xml file, or the configuration given below, and edit the elements in it to point to the enterprise LDAP server you want to use. Then put it back into the deployment file. You can put it in the server.xml file (Tomcat's configuration file), but as of Tomcat 5, this is not recommended. Since this involves editing the deployable file, security should be done before deployment.

The context tells the application server, Tomcat, that it applies only to this web application.

```
<Context antiJARLocking="true" antiResourceLocking="true"
reloadable="true">

<Realm className="org.apache.catalina.realm.JNDIRealm" debug="99"
connectionName="uid=demo,ou=users,ou=docucorp,dc=example,dc=com"
connectionPassword="demo" connectionURL="ldap://localhost:389"
roleBase="ou=groups,ou=docucorp,dc=example,dc=com" roleName="cn"
roleSearch="(uniqueMember={0})" roleSubtree="true"
userSearch="(uid={0})" userPassword="userPassword"
userPattern="uid={0},ou=users,ou=docucorp,dc=example,dc=com" />

</Context>
```

For more information, see the Tomcat JNDI Realm documentation:

<http://tomcat.apache.org/tomcat-5.5-doc/realm-howto.html#JNDIRealm>

Deployment Follow these steps to deploy iDocumaker under Tomcat 5.5:

- 1** Download the core Tomcat web application server from this site:
<http://tomcat.apache.org/download-55.cgi>
- 2** Install it as a Windows application or unzip it into a directory. It is better to run it so you can see the output and determine if the deployment was successful.
- 3** Start Tomcat using the Administrator Services, Start menu or by running the startup.bat file.
- 4** Copy the skywireccm.war file into the *tomcat/webapps* directory where *tomcat* is the Tomcat installation directory. The system shows Tomcat deploying the war file.
- 5** Test the deployment of the application by going to the following site:

<http://localhost:8080/skywireccm>

This should show the log in window.

INSTALLING UNDER TOMCAT 6.X

Security By default, the Tomcat application connects to a local LDAP server for its security configuration. The security configuration is built into the war file in the file under the META-INF/context.xml file.

Take the contents of this context.xml file, or the configuration given below, and edit the elements in it to point to the enterprise LDAP server you want to use. Then put it back into the deployment file. You can put it in the server.xml file (Tomcat's configuration file), but as of Tomcat 5 this is not recommended. Since this involves editing the deployable file, security should be done before deployment.

The context tells the application server, Tomcat, that it applies only to this web application.

```
<Context antiJARLocking="true" antiResourceLocking="true"
reloadable="true">

<Realm className="org.apache.catalina.realm.JNDIRealm" debug="99"
connectionName="uid=demo,ou=users,ou=docucorp,dc=example,dc=com"
connectionPassword="demo" connectionURL="ldap://localhost:389"
roleBase="ou=groups,ou=docucorp,dc=example,dc=com" roleName="cn"
roleSearch="(uniqueMember={0})" roleSubtree="true"
userSearch="(uid={0})" userPassword="userPassword"
userPattern="uid={0},ou=users,ou=docucorp,dc=example,dc=com" />

</Context>
```

For further explanation see the Tomcat JNDI Realm documentation.

<http://tomcat.apache.org/tomcat-6.0-doc/realm-howto.html#JNDIRealm>

Deployment Follow these steps to deploy iDocumaker under Tomcat 6.x:

- 1 Download the core Tomcat web application server from this site:
<http://tomcat.apache.org/download-60.cgi>
- 2 Install it as a Windows application or unzip it into a directory. It is better to run it so you can see the output and determine if the deployment was successful.
- 3 Start Tomcat using the Administrator Services, Start menu or by running the tomcat.exe file.
- 4 Copy the skywireccm.war file into the *tomcat/webapps* directory where *tomcat* is the Tomcat installation directory. The system shows Tomcat deploying the war file.
- 5 Test the deployment of the application by going to the following site:
<http://localhost:8080/skywireccm>

This should show the log in window.

INSTALLING UNDER WEBSPHERE 6.1

Installing iDocumaker under WebSphere 6.1 consists of the following tasks:

- [Setting Up Security on page 14](#) (optional)
- [Setting Up an IBM HTTP Web Server on page 17](#) (optional)
- [Deploying the EAR File on page 21](#) (required)
- [Managing the Web Module on page 28](#) (required)
- [Setting Up the WAS Plug-in on page 30](#) (required)
- [Testing the iDocumaker Web Application on page 32](#) (recommended)

For WebSphere 6.1, you should set up iDocumaker as a proxy service behind a web server. This topic shows, as an example, a basic IBM HTTP server configuration for a proxy server. You should have the IBM HTTP server with the plug-in installed.

Before you begin, make sure the...

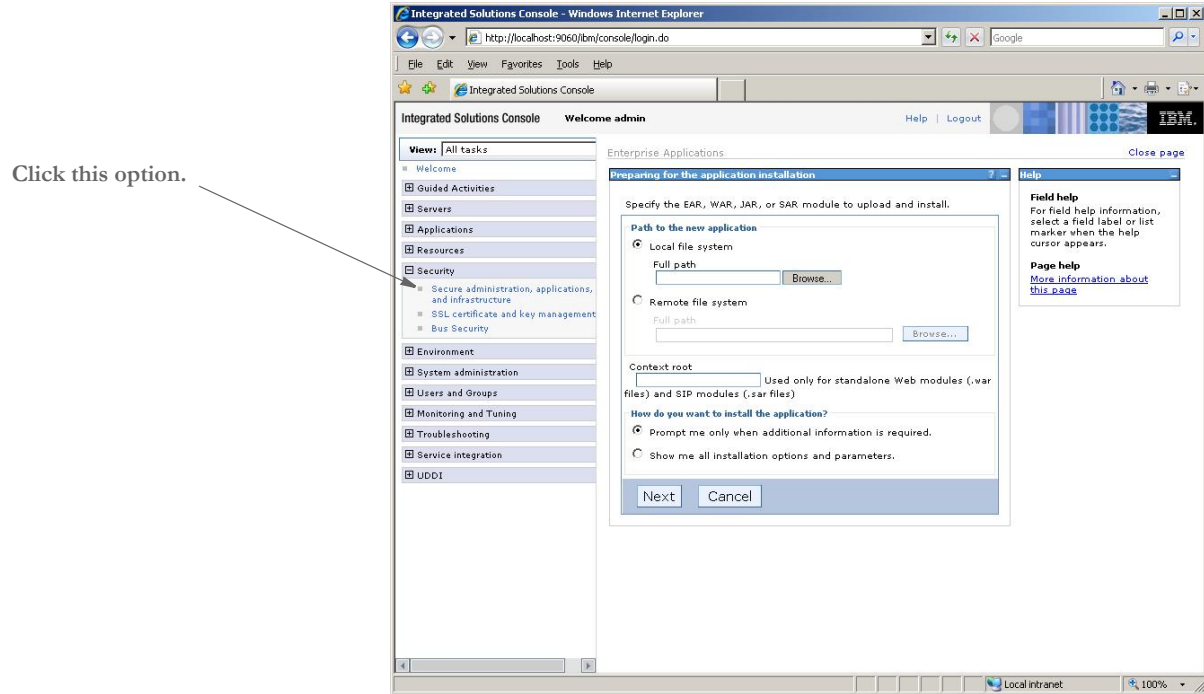
- Server is running
- Administration console is available

You should also have a working knowledge of WebSphere 6.1. For more information on WebSphere, contact your WebSphere software vendor.

Setting Up Security

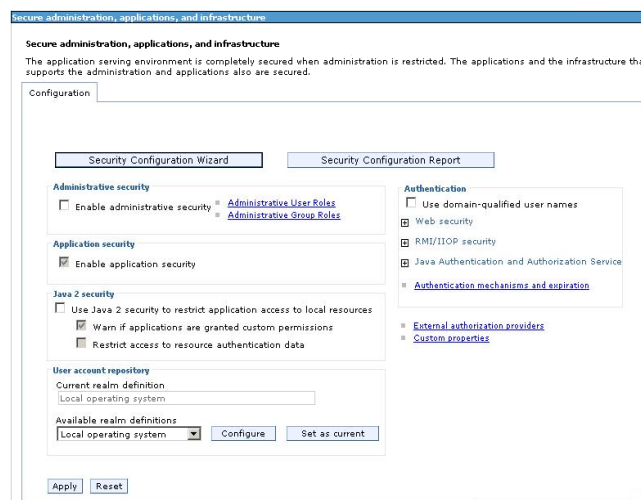
Follow these steps to set up security:

- 1 From the main screen expand the Security link on the left side menu. Click the Secure administration, applications, and infrastructure option.



The main Security window appears.

- 2 Choose LDAP and click the Configure button under User account repository.



You now see all the basic options for LDAP.

3 Enter your organization's LDAP information and click Apply.

The system displays this message to tell you that you have changed the configuration.

Click Save to save the changes.

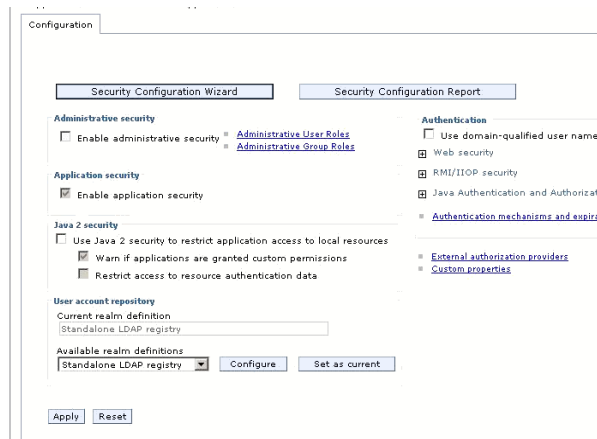
4 Enter any advanced mappings. Click Apply. Then click Save.

- 5 Click the Test Connection button. You should see a message similar to the one shown here:



Click Ok.

- 6 Under the User account repository option, choose the newly-created LDAP configuration and choose Set as current.



- 7 Check the Enable Administrative Security option. You will have to reboot the server.

If you are using our default OpenLDAP implementation you can log into the WebSphere console using this user ID and password:

For	Enter
User ID	demo
Password	demo

For a complete list of security settings for the default OpenLDAP implementation, see [OpenLDAP Security Settings on page 34](#).

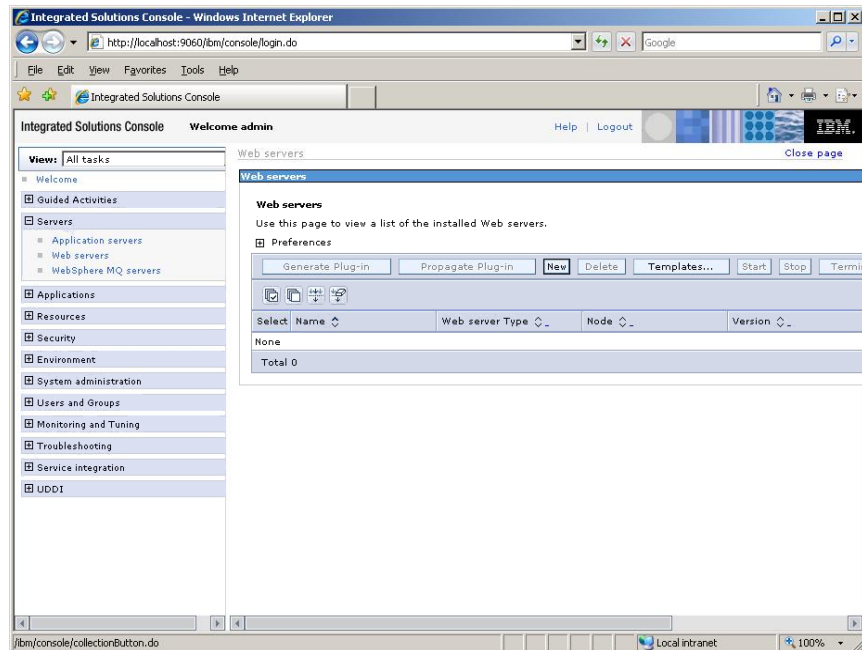
Setting Up an IBM HTTP Web Server

Here are the steps you need to follow to configure a web proxy server.

NOTE: If you use an existing web server to serve the static content, you can skip this topic. For performance reasons, the IBM HTTP server (IHS) is used to serve iDocumaker's static content.

Before you begin...

- Install the IBM HTTP server.
 - Make sure the IBM HTTP server is running as a service.
- 1 Click Web Server from the Servers link on the left most menu. You should see a screen like the following. Click New.



- 2 You will see the following window. Enter the appropriate information.

Create new Web server definition

Use this page to create a new Web server.

→ Step 1: Specify the Web server name, type, host name and platform.

Step 2: Select a Web server template

Step 3: Enter the properties for the new Web server

Step 4: Confirm new Web server

Specify the Web server name, type, host name and platform.

Specify a Web server name, type, host name and platform.

* Server name
skywireccm_webserver

* Type
IBM HTTP Server

* Host name
localhost

* Platform
Windows

Next Cancel

Click Next

- 3 Choose the default template.

Create new Web server definition

Use this page to create a new Web server.

Step 1: Specify the Web server name, type, host name and platform.

→ Step 2: Select a Web server template

Step 3: Enter the properties for the new Web server

Step 4: Confirm new Web server

Select a Web server template

Select the template that corresponds to the server that you want to create.

Select	Template Name	Type	Description
<input checked="" type="radio"/>	IHS	System	The IHS Web Server Template

Previous Next Cancel

Then click Next.

- 4 Enter your web server's properties. Keep in mind where you have it installed, the HTTP administration server's user name and password (if applicable), and so on. Make sure the path to the installed HTTP server and the plug-in location are properly defined.

Create new Web server definition

Use this page to create a new Web server.

Step 1: Specify the Web server name, type, host name and platform.
 Step 2: Select a Web server template
 → **Step 3: Enter the properties for the new Web server**
 Step 4: Confirm new Web server

Enter the properties for the new Web server

Enter the Web server properties.

* Port: 80
 Web server installation location: D:\IBM\HTTPServer
 * Service name: IBMHTTPServer6.1
 * Plug-in installation location: D:\IBM\HTTPServer\Plugins
 Application mapping to the Web server: All

Enter the IBM Administration Server properties.

* Port: 8008
 * Username: admin
 * Password: *****
 * Confirm password: *****
☐ Use SSL

Previous Next Cancel

Click Next when you are finished.

- 5 Review your changes and click Finish when you are happy with them.

Create new Web server definition

Use this page to create a new Web server.

Step 1: Specify the Web server name, type, host name and platform.
 Step 2: Select a Web server template
 Step 3: Enter the properties for the new Web server
 → **Step 4: Confirm new Web server**

Confirm new Web server

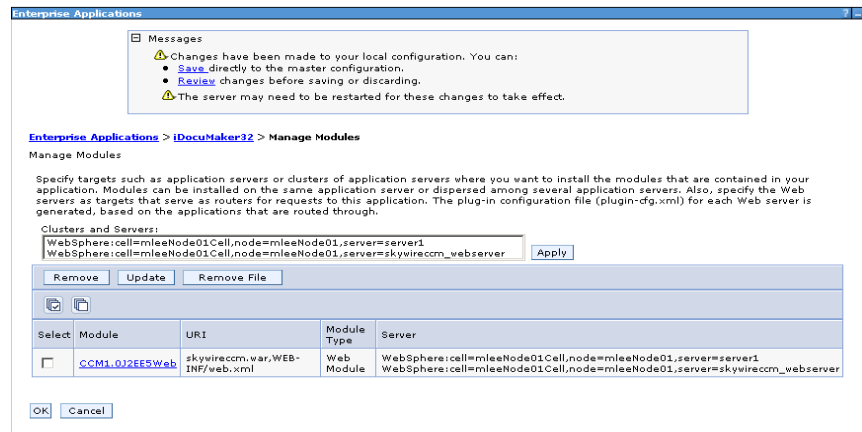
The following is a summary of your selections. Click the Finish button to complete the Web server creation. If there are settings you wish to change, click on Previous button to review the server settings.

Summary of actions:
 New Web server entry "skywireccm_webserver" will be created on hostname "localhost"
 Platform Type "Windows"
 Web server install root "D:\IBM\HTTPServer"
 Plug-in Install

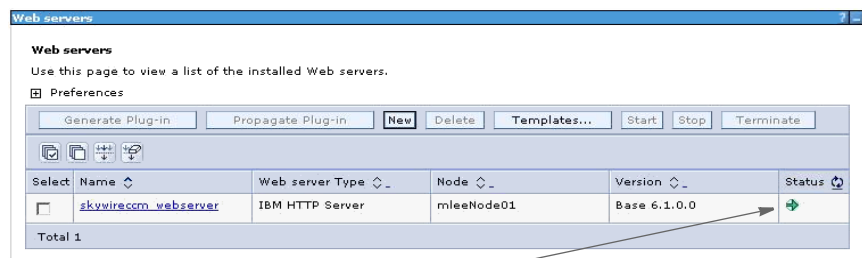
Previous Finish Cancel

The Please Wait icon appears.

6 Click the Save link to save the new configuration.



You should now see your new web server with a status of running (green arrow).



This indicates the web server is running.

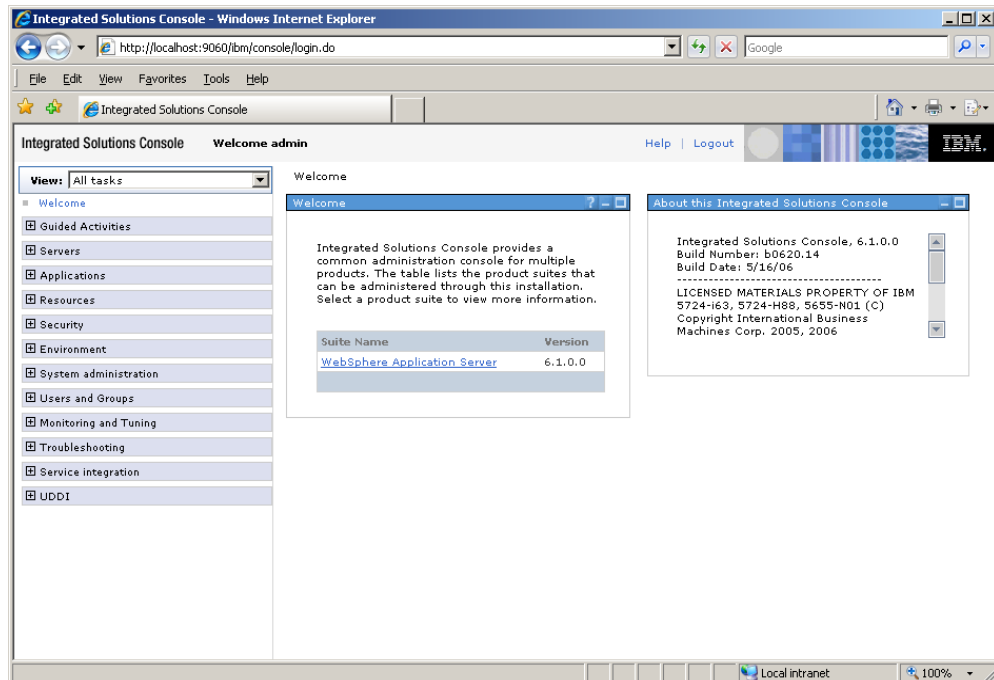
Deploying the EAR File

Make sure WebSphere is installed and you have an understanding of starting, stopping and configuring the server. In addition...

- There should already be a WebSphere server or cluster instance created for the application.
- The WebSphere instance should be running with the administration of that server available.

Follow these steps to deploy the EAR file:

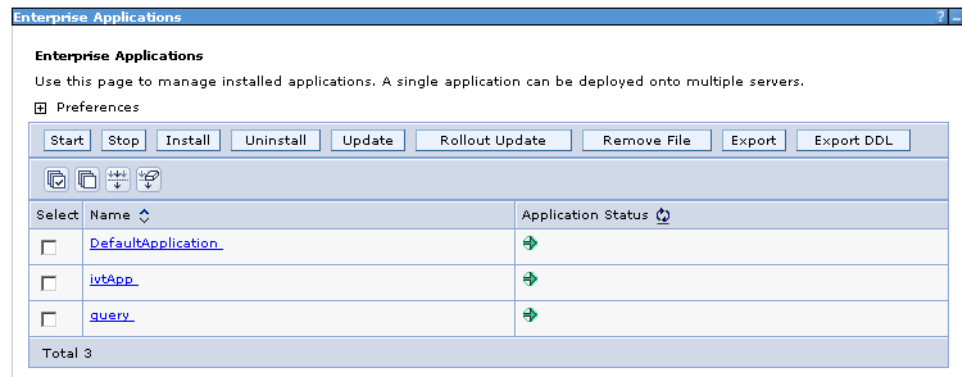
- 1 Log into the administration console. You should see a window similar to the following:



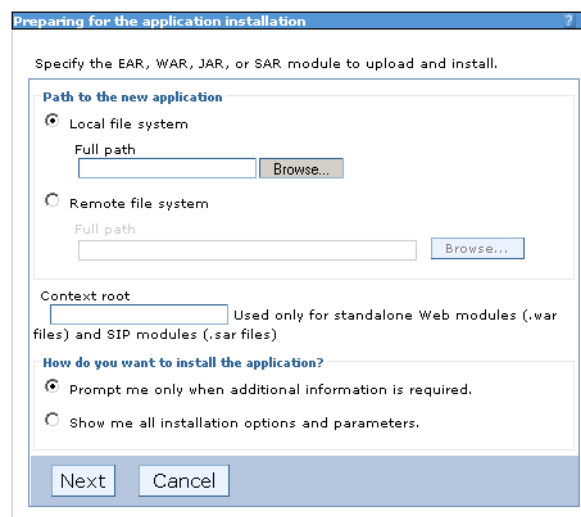
- 2 Click the Applications link on the left hand menu. You will now see these options:

- Enterprise Applications
- Install New Application

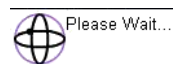
- 3 Under Enterprise Applications it shows a list of installed applications. Skywireccm should not be on the list. You will return to this list.



- 4 Click the Install New Application link. This window appears.



- 5 From here, click Browse and locate the skywireccm.ear file. Then click Next. The Please Wait icon appears, which indicates the system is uploading and preparing the application.



- 6 Next is the Install Options window. You can accept the defaults and click Next.

The screenshot shows the 'Install New Application' window with the title bar 'Install New Application'. The main heading is 'Specify options for installing enterprise applications and modules.' On the left, there is a navigation pane with three steps: 'Step 1: Select installation options' (highlighted with a blue arrow), 'Step 2: Map modules to servers', and 'Step 3: Summary'. The main content area is titled 'Select installation options' and contains the following options:

- ☐ Precompile JavaServer Pages files
- Directory to install application: [text box]
- ☒ Distribute application
- ☐ Use Binary Configuration
- ☐ Deploy enterprise beans
- Application name: [text box with 'iDocuMaker32']
- ☒ Create MBeans for resources
- ☐ Enable class reloading
- Reload interval in seconds: [text box]
- ☐ Deploy Web services
- Validate Input off/warn/fail: [dropdown menu with 'warn' selected]
- ☐ Process embedded configuration
- File Permission**
 - Allow all files to be read but not written to
 - Allow executables to execute
 - Allow HTML and image files to be read by everyone
 - [button: Set file permissions]
 - [text box: *.*;dl=755#.*;.so=755#.*;.a=755#.*;.sl=755]
- Application Build ID: [text box with 'Unknown']
- ☐ Allow dispatching includes to remote resources
- ☐ Allow servicing includes from remote resources

At the bottom are 'Next' and 'Cancel' buttons.

- 7 Now map the application to servers. Typically you just have to check the box and click Next.

NOTE: If you are not using container managed security, you can skip this step.

The screenshot shows the 'Install New Application' window with the title bar 'Install New Application'. The main heading is 'Specify options for installing enterprise applications and modules.' On the left, the navigation pane shows 'Step 1: Select installation options' and 'Step 2: Map modules to servers' (highlighted with a blue arrow). The main content area is titled 'Map modules to servers' and contains the following information:

Specify targets such as application servers or clusters of application servers where you want to install the modules that are contained in your application. Modules can be installed on the same application server or dispersed among several application servers. Also, specify the Web servers as targets that serve as routers for requests to this application. The plug-in configuration file (plugin-cfg.xml) for each Web server is generated, based on the applications that are routed through.

Clusters and Servers:

```
WebSphere:cell=mleeNode01Cell,node=mleeNode01,server=server1
WebSphere:cell=mleeNode01Cell,node=mleeNode01,server=skywireccm_webserver
```

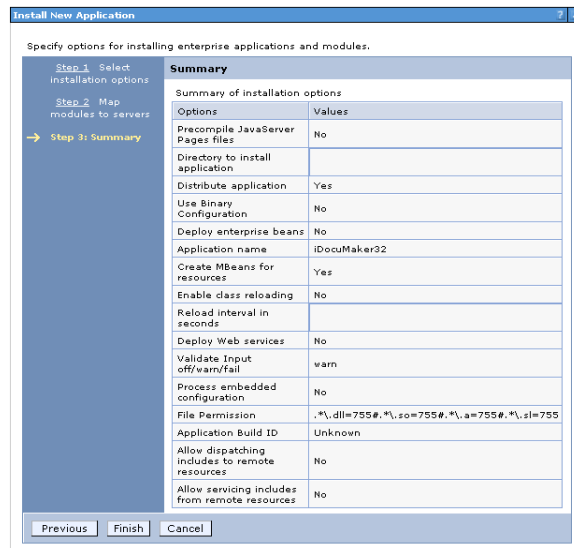
[button: Apply]

Select	Module	URI	Server
<input type="checkbox"/>	CCM1.0J2EE5Web	skywireccm.war,WEB-INF/web.xml	WebSphere:cell=mleeNode01Cell,node=mleeNode01,server=server1 WebSphere:cell=mleeNode01Cell,node=mleeNode01,server=skywireccm_webserver

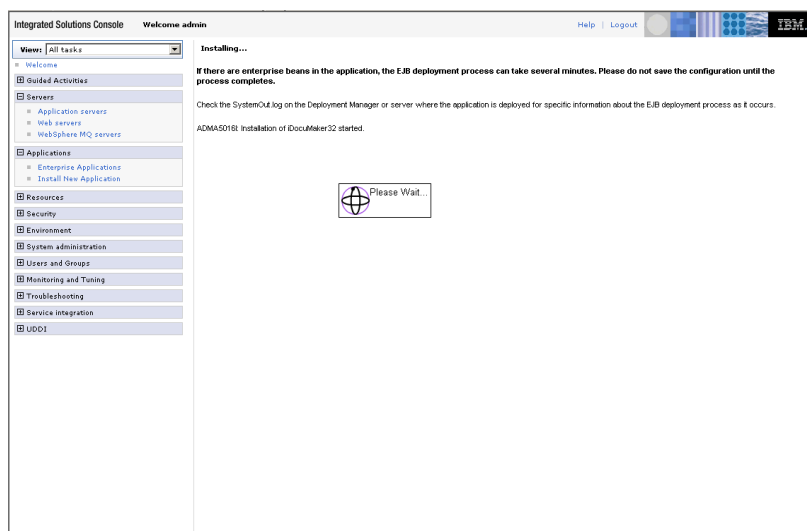
At the bottom are 'Previous', 'Next', and 'Cancel' buttons.

When you finish, the Please Wait icon appears.

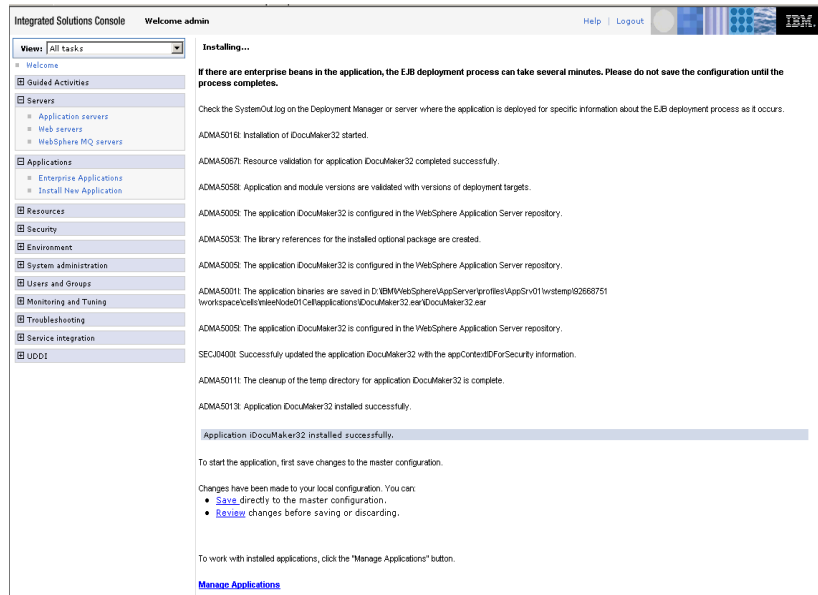
- 8 The Summary window appears and provides information on the entire application's deployment. Click Finish.



The installation window appears with the Please Wait icon.



9 When the installation finishes you should see a window similar to the following.



Click the Save link to save the master configuration.

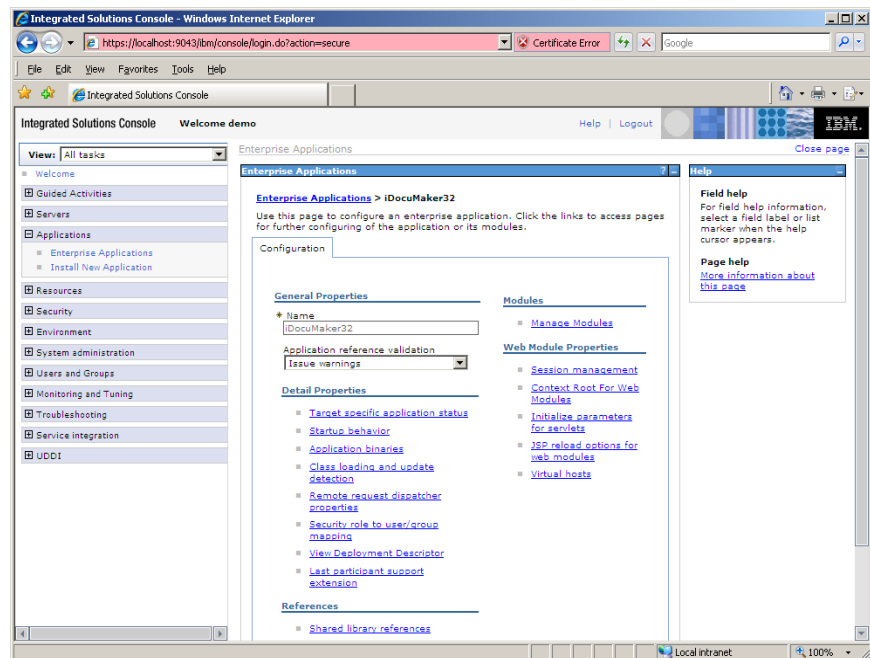
Mapping Security Roles

Follow these steps to map security roles to users or groups:

NOTE: If you have the secure version of the application, you need to map the application roles to the your security system's roles.

If you have the insecure version, ignore this step.

- 1 Click the Enterprise Applications link on the main menu to the left and choose the newly-installed iDocuMaker32 application. You should see the following screen.



- 2 Click the Security Role to User/Group mapping link. This page appears:

Enterprise Applications

Enterprise Applications > iDocuMaker32 > Security role to user/group mapping

Security role to user/group mapping

Each role that is defined in the application or module must map to a user or group from the domain user registry.

Look up users Look up groups

Select	Role	Everyone?	All authenticated?	Mapped users	Mapped groups
<input type="checkbox"/>	dmgusers	<input type="checkbox"/>	<input checked="" type="checkbox"/>		

OK Cancel

- 3 Click the Select and All Authenticated boxes and click the Look up groups button.

This page appears.

Enterprise Applications

[Enterprise Applications](#) > [iDocuMaker32](#) > [Security role to user/group mapping](#) > [Look up users or groups](#)

Specifies whether to look up users or groups.

The following roles are mapped to the items in the selected list.

☒ dmusers

To search for users or groups, enter a limit (number) and a search pattern (such as a*) and click Search:

limit (number of items)
20

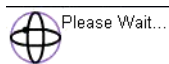
Search String
*

Select users or groups in the Available list. Move them to the Selected list by clicking >>.

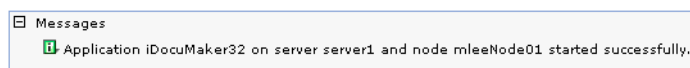
Available:		Selected:
cn=dmadmins,ou=groups,ou=docucorp,dc=example,dc=com	>>	cn=dmusers,ou=groups,ou=docucorp,dc=example,dc=com
cn=dmusers,ou=groups,ou=docucorp,dc=example,dc=com	<<	
cn=dmbridges,ou=groups,ou=docucorp,dc=example,dc=com		
cn=dmgavers,ou=groups,ou=docucorp,dc=example,dc=com		
cn=dmgdemousers,ou=groups,ou=docucorp,dc=example,dc=com		
cn=DOUCORP,ou=groups,ou=docucorp,dc=example,dc=com		

- 4 Accept all of the defaults and click the Search button. A list of the OpenLDAP roles appears in the Available columns.
- 5 Select *cn=dmusers...* and click the >> button to move it into the Selected column. Click Ok and then click Ok again. Then click Save.

You will see the Please Wait icon.



When it is done you will see a message similar to this one:



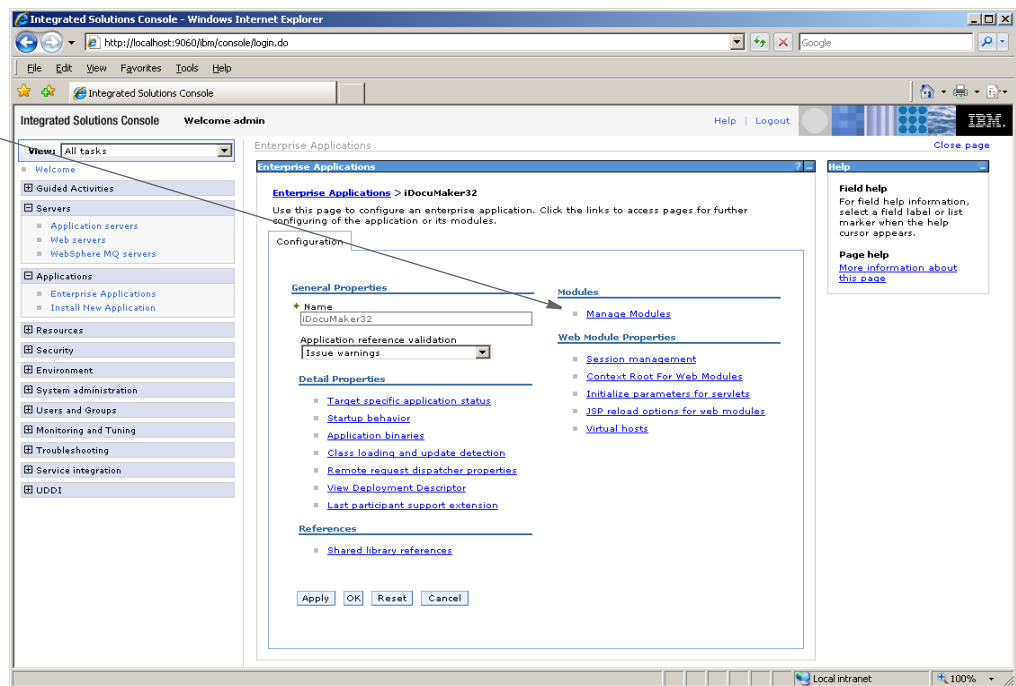
Managing the Web Module

First, make sure the plug-in is installed. It may be an optional check box as part of the HTTP server installation or can be installed separately.

NOTE: If you run into any problems, it could indicate a class loading issue.

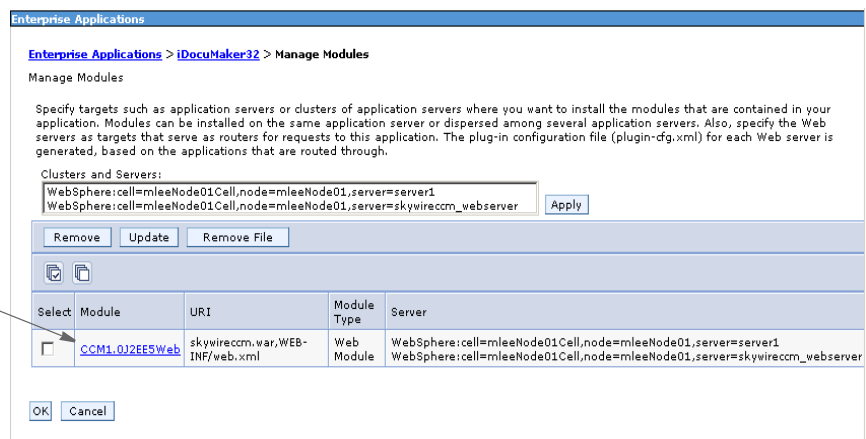
- 1 Select Manage Modules. Then click the iDocumaker32 application. You should see the following window.

Select the Manage Modules option.



- 2 After you select the Manage Modules option, this window appears:

Click this link.



Click the CCM1.0J2EE5Web link.

- 3 For Class loader order, select the Classes loaded with application class loader first option.

Select the Classes loaded with application class loader first option.

Enterprise Applications > iDocuMaker32 > Manage Modules > skywireccm.war

Use this page to configure an instance of a deployed Web module in the application. This page contains deployment-specific information for a Web module and session management settings.

Configuration

General Properties	Additional Properties
* URI skywireccm.war	■ View Module Class Loader
Alternate deployment descriptor	■ Target specific application status
* Starting weight 10000	■ View Deployment Descriptor
* Class loader order Classes loaded with application class loader first	■ View Portlet Deployment Descriptor
	■ Session Management

Apply OK Reset Cancel

Click Ok.

- 4 Now save the configuration. After the configuration is saved, you return to the following window. Select iDocumaker32 and click Start.

Click here then click Start

This will change to a green arrow

Enterprise Applications

Use this page to manage installed applications. A single application can be deployed onto multiple servers.

Preferences

Start Stop Install Uninstall Update Rollout Update Remove File Export Export DDL

Select	Name	Application Status
<input type="checkbox"/>	DefaultApplication	
<input checked="" type="checkbox"/>	iDocuMaker32	
<input type="checkbox"/>	ivtApp	
<input type="checkbox"/>	query	

Total 4

The Application Status changes to a green arrow. This tells you the application is now running.

Setting Up the WAS Plug-in

Make sure the WebSphere Application Server (WAS) plug-in is installed. It may be an optional check box as part of the HTTP server installation or may be installed separately.

You can also find these instructions in the readme.txt file included in the iDocumaker distribution.

- 1 Open the httpd.conf file in the conf directory in the HTTP server installation directory and add the following lines.

```
Alias /skywireccm
"D:/IBM/WebSphere/AppServer/profiles/AppSrv01/installedApps/
mleeNode01Cell/iDocumaker32.ear/skywireccm.war"
<Directory "D:/IBM/WebSphere/AppServer/profiles/AppSrv01/
installedApps/mleeNode01Cell/iDocumaker32.ear/skywireccm.war">
AllowOverride None
Options None
</Directory>
LoadModule was_ap20_module
"C:\IBM\HTTPServer\Plugins\bin\mod_was_ap20_http.dll"
WebSpherePluginConfig
"C:\IBM\HTTPServer\Plugins\config\skywireccm_webserver\plugin-
cfg.xml"
```

Replace the path to the path to the deployed application on your WebSphere application server. Please note your environment may differ, so the directory setting may have to be changed to reflect your environment.

NOTE: The LoadModules line points to the plug-in DLL path. The WebSpherePluginConfig should point to the plugin-cfg.xml for the configured web server instance.

- 2 The plug-in is initially configured to use Tomcat instead of the IBM HTTP server. To use IBM HTTP server, you must edit the global.xml file. Open the global.xml file and change the port setting for the "PUTURL" SOURCE= from 8080 to 80.

Here is an example of how your section should look after you make the change:

```
- <REQTYPE DESCRIPTION="" NAME="i_PluginInit"
LOW.LEVEL.SERVICE="7006" SENDFILE="NONE" GETFILE="QUEUE">
- <INPUT SERVICENAME="">
  <VAR NAME="USERID" SOURCE="" />
  <VAR NAME="CONFIG" SOURCE="" DATAXPath="DOCUMENT/SESSION/USERID" /
>
  <VAR NAME="PRTTYPE" SOURCE="">DPW</VAR>
  <VAR NAME="PASSWORD" SOURCE="">DEMO1</VAR>
  <VAR NAME="" SOURCE="WIPKEYS/RECNUM" DATAXPath="DOCUMENT/DOCSET/
WIPKEYS/RECNUM" />
  <VAR NAME="PUTURL" SOURCE="">localhost:80</VAR>
  <VAR NAME="SCRIPT" SOURCE="">skywireccm/jeds/ientrypluginsave</
VAR>
  <VAR NAME="GETSCRIPT" SOURCE="">skywireccm/getidsresource/
ientryplugingetresource</VAR>
  <VAR NAME="REFRESHSCRIPT" SOURCE="">skywireccm/jeds/debug</VAR>
  <VAR NAME="SAVE_REQTYPE" SOURCE="">i_PluginSave</VAR>
```



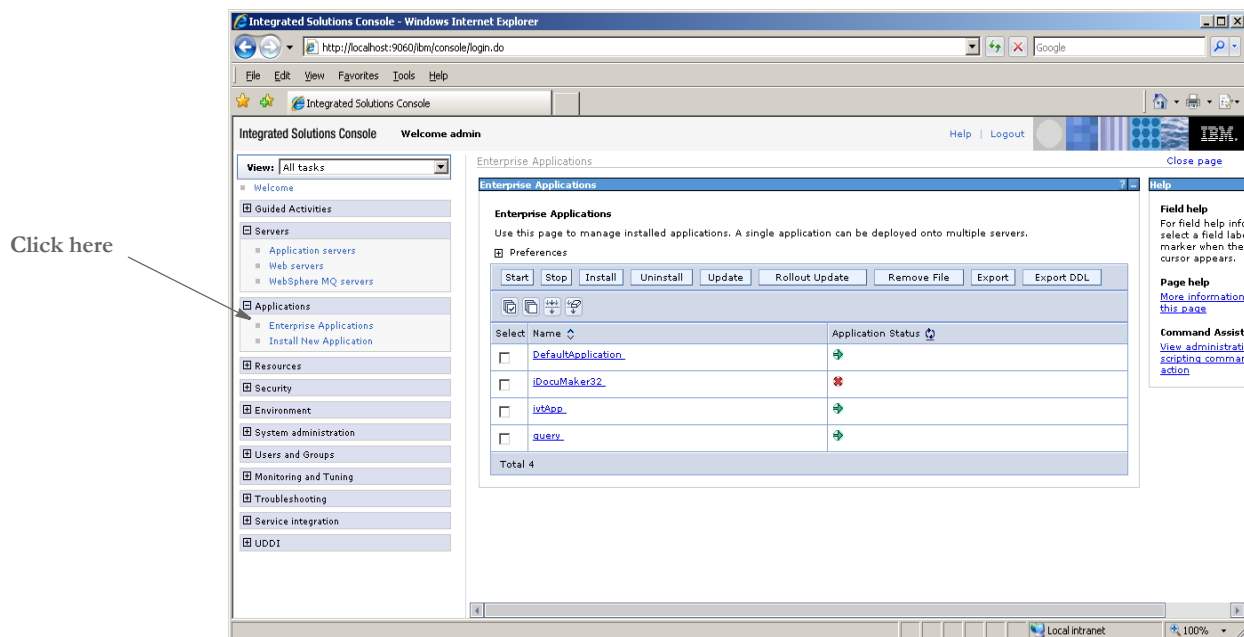
```
<VAR NAME="HTTPQUERYSTRING">2</VAR>
<VAR NAME="HTTPQUERYSTRING1.NAME">jsessionId</VAR>
<VAR NAME="HTTPQUERYSTRING1.VALUE" SOURCE=" " DATAXPath="DOCUMENT/
SESSION/ID" />
<VAR NAME="HTTPQUERYSTRING2.NAME">config</VAR>
<VAR NAME="HTTPQUERYSTRING2.VALUE" SOURCE=" " DATAXPath="DOCUMENT/
DOCSET/LIBRARY/CONFIG" />
<VAR NAME="HTTPCOOKIE">1</VAR>
<VAR NAME="HTTPCOOKIE1.NAME">JSESSIONID</VAR>
<VAR NAME="HTTPCOOKIE1.VALUE" SOURCE=" " DATAXPath="DOCUMENT/
SESSION/ID" />
<VAR NAME="PRINTFILE" SOURCE=" " />
</INPUT>
<OUTPUT />
</REQTYPE>
```

3 Restart the IBM HTTP server.

Testing the iDocumaker Web Application

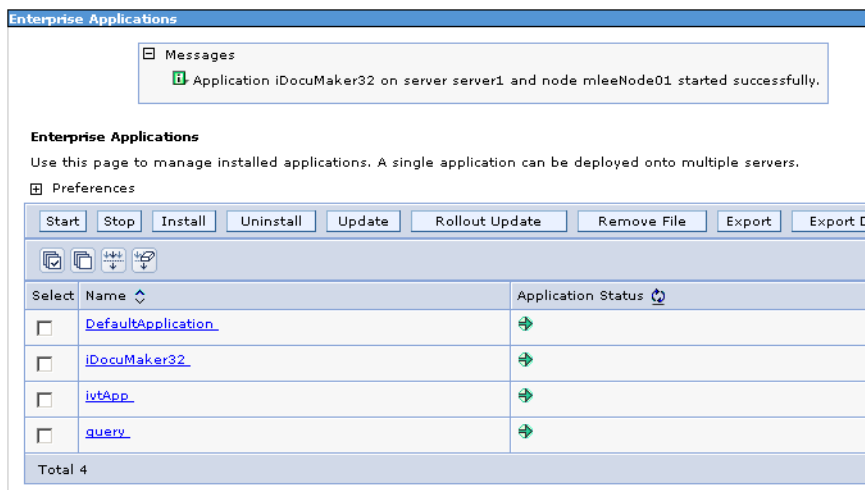
Follow these steps to test your iDocumaker web application.

- 1 Click Enterprise Applications to the left and you should now see the newly-deployed application.



NOTE: If your iDocumaker web application does not appear, review the steps in [Mapping Security Roles on page 26](#) to make sure you have mapped everything correctly.

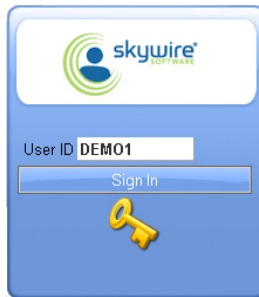
- 2 Under Enterprise Applications, click the box next to iDocumaker32 and click Start. The Please Wait icon appears. When it finishes, you will see this message:



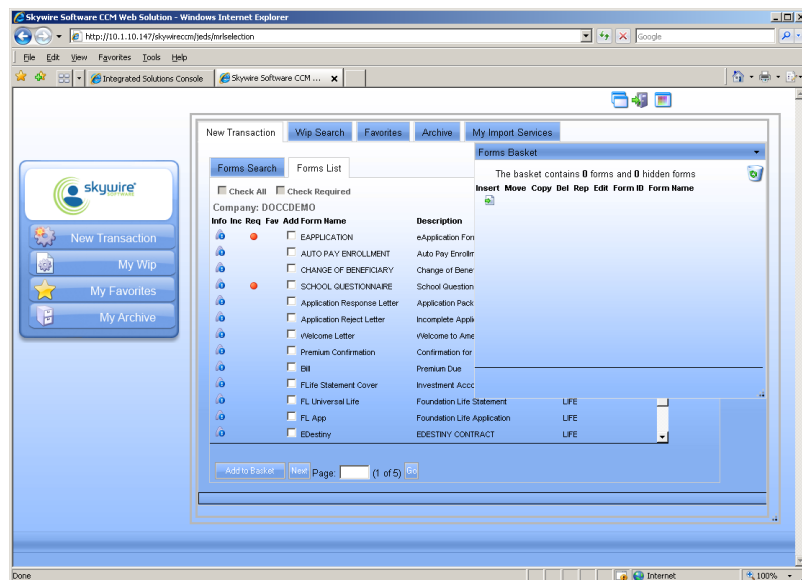
- 3 Test the deployment of the application by going to this site:

<http://localhost/skywireccm>

You should now see the login screen. If you have security configured, you will also see a password field.



- 4 After logging in, you will see the application.



This concludes the test of your deployment.

OPENLDAP SECURITY SETTINGS

The following settings are only to support the iDocumaker demo and should not be used as your main security settings. These settings are described here for reference purposes.

Under basic Standalone LDAP Registry, for the Server User Identity, choose the server identity stored in the repository. Under that, use the following settings:

Item	Setting
User ID	uid=demo,ou=users,ou=docucorp,dc=example,dc=com
Primary administrative user name:	uid=demo,ou=users,ou=docucorp,dc=example,dc=com
Password	demo
Type of LDAP server	Custom
Host	localhost
Port	389
Base distinguished name	ou=docucorp,dc=example,dc=com
Bind distinguished name	uid=demo,ou=users,ou=docucorp,dc=example,dc=com
Bind password	demo
Search timeout	120
Reuse connection	True
Ignore case for authorization	False

Keep the default SSL settings.

Here are the advanced LDAP user registry settings:

Item	Setting
User Filter	(&(uid=%v)(objectclass=docucorpAccount))
Group Filter	(&(cn=%v)((objectclass=groupOfUniqueNames)(objectclass=groupOfUniqueNames)))
Group member ID map	groupOfUniqueNames:uniqueMember
User ID map	*:uid
Group ID map	*:cn

Index

A

Apache Ant 4

C

caching 4

D

Documaker Studio 2

H

HotSAX 4, 6, 8

I

IBM HTTP server 13, 17

J

Java
 and web servers 3
 J2EE 1, 10
Jericho HTML Parser 4, 6, 8

L

LDAP 14
LDAP server 10, 11, 12

M

master resource library 2

O

OpenLDAP settings 34

P

patch script 5, 7

S

SAX2 parser 4
ShiftOne Cache 4, 6, 9

T

third-party libraries 4
Tomcat 11, 12

W

WebSphere
 deploying the EAR file 21
 installing under 13
 WAS plug-in 30
WinRAR 4
WinZip® 4