

March 2012

Documaker version 11.5

Documaker Desktop version 11.5

Release Notes

Oracle Insurance announces Oracle Documaker and Oracle Documaker Desktop version 11.5. This document introduces version 11.5 and describes its new features and enhancements. Changes in version 11.5 affect these components:

- Documaker Studio
- Docutoolbox
- Documaker Server
- Documaker Workstation
- Docupresentment

Version 11.5 includes features and enhancements that improve the functionality and ease of use of our suite of products. This document provides an overview of those features and enhancements, grouped into these areas:

- *Working with Documaker Studio Files Using Microsoft Word* on page 3
- *Documaker Studio Enhancements* on page 4
- *Documaker Server Enhancements* on page 8
- *DAL Enhancements* on page 9
- *Rule Enhancements* on page 9
- *Docupresentment Enhancements* on page 10
- *Docutoolbox Enhancements* on page 11
- *Documaker Desktop Enhancements* on page 12
- *Printer and Font Enhancements* on page 12
- *Platform-Wide Enhancements* on page 13
- *Miscellaneous Studio Enhancements* on page 13

In addition, you will find information on:

- *Important Considerations when Upgrading* on page 18
- *Contacting Oracle Global Customer Support* on page 20

To receive the full benefits of the new product features included in this and earlier releases, Oracle University offers a comprehensive range of training classes. For a list of courses, including fees and availability, please call 1.800.529.0165.

Note For installation instructions, please refer to the [Documaker Installation Guide](#). Check Oracle's Software Delivery Cloud for availability:

<https://edelivery.oracle.com/>

ABOUT ORACLE DOCUMAKER

Oracle Documaker is the most widely used dynamic publishing platform in the insurance industry. Oracle Documaker is a powerful publishing platform that automates enterprise-wide design, production, and multi-channel distribution of a broad array of customer-facing insurance documents.

Oracle Documaker provides...

- Robust design environment — for tight integration between content, data, and logic
- Conversion tools — to preserve legacy investments
- Web-based solution — to enable interactive and on-demand communications
- Multi-channel delivery and output — supports email, SMS, HTML, XML, PDF, RTF, fax, and 14 named print stream outputs
- Templates — so you can generate documents quickly and consistently
- Lightweight, cost-efficient, service-centric approach — to make it easy to use
- Pre-packaged, pre-built forms libraries — to speed the time to market
- Integration within insurance enterprise infrastructure — to promote straight-through processing (quote, rate, bind, issue)

NEW FEATURES AND ENHANCEMENTS

Documaker version 11.5 and Documaker Desktop version 11.5 contains numerous new features and enhancements. These product changes are summarized in the following categories:

- *Working with Documaker Studio Files Using Microsoft Word* on page 3
- *Documaker Studio Enhancements* on page 4
- *Documaker Server Enhancements* on page 8
- *DAL Enhancements* on page 9
- *Rule Enhancements* on page 9
- *Docupresentation Enhancements* on page 10
- *Docutoolbox Enhancements* on page 11
- *Documaker Desktop Enhancements* on page 12
- *Printer and Font Enhancements* on page 12
- *Platform-Wide Enhancements* on page 13
- *Miscellaneous Studio Enhancements* on page 13

WORKING WITH DOCUMAKER STUDIO FILES USING MICROSOFT WORD

The Documaker Add-in for Microsoft® Word lets you create Documaker Studio files using Microsoft Word 2007. The Add-in adds a Documaker tab to the Microsoft Word menu ribbon.

Using the Add-In, you can import Documaker Studio workspace information into Microsoft Word 2007 and create files which can be seamlessly imported into Documaker Studio.

Note Review the Readme file, which is included with the version 11.5 software download, for important information on Microsoft Word patches.

DOCUMAKER STUDIO ENHANCEMENTS

The following changes affect Documaker Studio. For more information, see the [Documaker Studio User Guide](#).

Enhanced Print Window

Version 11.5 includes enhancements to Studio's Print window to make it easier to use. These changes also add the Additional Print Options button to give you access to the INI options applicable to the print driver you selected.

Additional Language Support

The spell checking and hyphenation features available in Documaker Studio, Docucreate, and Documaker Workstation now support these additional languages: Canadian English, Czech, Greek, Polish, Russian, Slovak, Turkish, and Welsh. In addition, version 11.5 adds hyphenation support for Turkish and Hungarian.

Additional Header and Footer Options

Documaker now provides additional header and footer options which let you specify whether the section that contains the header or footer prints on the first or last page of the form set.

Creating Headers and Footers for Multipage Sections

Version 11.5 lets you create multipage sections that contain or inherit headers or footers defined for the form.

Type Text Labels Directly onto Sections

Now you can type the text for text labels directly onto the current section.

Defining Tables Based on Data Definitions

You can use the new Table wizard in Studio to select a data extract record to link to a table. This record is then used to trigger the table. The record's children are linked to the table columns. Studio uses the existing XDD rule, so you do not have to set up field mapping rules for the table and the Extract Data Dictionary.

Adding PDF417 Bar Codes

You can now pick the PDF417 bar code from Studio's list of standard bar codes. In previous versions, you could produce PDF417 bar codes but only by using the CreateNYAAMVAData and CreatePDF417Barcode rules.

Maintaining Documerge Resources

If you are using Documerge Studio to maintain Documerge resources, you can use the new Documerge Field report to get information about the fields associated with that resource.

Generating a Workspace Definition File for the Documaker Add-in for Microsoft Word

Studio lets you generate a Workspace Definition file (WDF) to provide the Documaker Add-In for Microsoft Word with information about objects in a Documaker master resource library. The Add-In uses information in this file to populate the selection lists you use when you create content in Word. Using a WDF file will make creating forms, sections, and paragraph lists easier and will produce more consistent documents.

Importing Documaker Documents Created in Word

Studio's Conversion manager provides a wizard for importing Documaker documents created in Microsoft Word using the Documaker Add-In for Word.

Improved RTF Conversion

Version 11.5 improves the RTF conversion process to improve the fidelity of the documents converted into Studio. These improvements include:

- You no longer have to first save .DOC files in Rich Text Format as Studio automatically handles this for you —assuming you have Microsoft Word on your computer.
- Improving RTF font selection so word wrapping and page breaks will more closely resemble the source file.
- Improving the handling of headers and footers to better calculate the size and placement of them and to handle a mix of free-flowing and absolute positioned content within them.
- Improving the handling of page breaks and section breaks to reduce the occurrences of page overruns.
- Improving the handling of absolute placed content such as text and graphics.
- Improving the conversion of document fields to match appropriate Documaker field types.
- Retaining the text and page numbers in a table of contents.

In addition, Studio now places font substitution messages in the Output area and the trace file if you set the following options to Yes:

```
< Debug_Switches >  
  Enable_Debug_Options = Yes  
  Debug_FontSubs = Yes
```

You can also use the new RTFFontSubs control group to specify the fonts to use if a name match is not present. This control group supersedes the RTFFontMap control group.

Capturing Information from Imported Word Files

When Studio imports a Word file, it now captures the author, last author, creation date, last saved date, and application name information stored in the Word file. Studio attaches this information to the section or paragraph and stores it in history where you can view it from within Studio.

Embedding Sections in Forms

With the introduction of embedded sections, you can now maintain the content of a form without having to create separate library resources for sections that must be checked out to edit. This lets you see the edits to a section in context with the remainder of the form.

Converting Word Files into Sections

You can convert Microsoft Word (DOC or DOCX) and Rich Text Files (RTF) into Documaker form (FOR) files. And optionally, during the conversion Studio can create separate files (FAP files) for each section and separate files (LOG files) for each graphic in the converted form.

Assigning Triggers to Key2 and Key3

You can now assign triggers to Key2 and Key3 groupings within your MRL. By triggering multiple Key3 groups within a Key2, you can assign multiple groups of forms, (multiple lines of business, multiple coverage parts, and so on) within a single Key1/Key2 combination.

Preserving Field Order when Importing XDD Elements

Now you can view XDD elements in the order in which they were manually entered or imported. For instance, this view can help you compare elements when you are trying to match the XDD to a sample import XML file. You can still sort the XDD elements by Name and by Offset, this just lets you return to the import sequence.

Using XDD Name References

The system now adds a unique identifier to each symbol defined in the extract dictionary (XDD) to provide a guaranteed match when the symbol is mapped onto forms.

Importing the XSD into the XDD

Studio can now import an XML schema (XSD) into an extract data dictionary (XDD). From the schema, the XDD recognizes parent and children elements and also inherits any attributes as children.

Importing XML Attributes into Fields in the XDD

When importing an XML file into the XDD, Studio creates fields for each node in the XML tree. Now Studio can also create fields based on node attributes.

Using Subforms

Version 11.5 provides a new Force Page Break form-level option for subforms. This lets you force a page break on the second occurrence of a subform, within the current form or parent subform. Version 11.5 also adds basic header/footer logic to subform. Any header or footer sections added to a subform are treated as group headers and footers for the subform.

Adding Comments to Documaker Objects

Now you can attach comments to Documaker objects, such as forms, sections, and fields, created in Studio or via the Documaker Add-In for Microsoft Word. You can use these comments to note additional work you feel should be completed or for any other purpose.

Using the Task List

Studio's new Task List shows you a list of the comments and undefined items that apply to the Studio resource you are viewing. You can use these task comments as a to-do list or for any other purpose. In addition, Studio tells you if there are any fields, recipients, graphics, and triggers you still need to define for the resource.

Using the Finishing Report

The new Finishing Report lets you see a to-do list of the tasks associated with specific Studio resources. The Finishing Report can evaluate forms, sections, paragraphs, and paragraph lists to check for the following items:

- Task comments
- Undefined fields
- Undefined graphics
- Undefined recipients
- Undefined triggers

These tasks can originate from within Studio or via the Documaker Add-In for Microsoft Word.

Creating Tear-Off Stubs

You can now set up stubs, such as remittance stubs, checks, driver IDs, and so on, in Studio and print them via Documaker Server. To Documaker, a *stub* is defined as a footer or header with a corresponding back side header or footer. You can size this (stub) header or footer differently than the other headers or footers on the form.

Importing RTF Files Created by the IStream Migration Utility

Studio now lets you import RTF files created by the IStream Migration Utility. Studio automatically sets the size of the section, recognizes tags as variable fields from the RTF, and creates XDD entries. Studio will also import property information for these fields from the FDB, if available.

DOCUMAKER SERVER ENHANCEMENTS

The following changes affect Documaker Server. For more information, see the [Documaker Administration Guide](#).

Printing Booklets

Documaker Server now supports booklet printing. A *booklet* is a 2-up duplex print format that can be stapled in the middle and folded to form a small book. The system lets you customize the paper size, cover sheets, a custom blank page, and different size and tray selections for the cover sheet and booklet pages.

Removing the 2GB File Size Limitation

Now Documaker Server (GenTran, GenData, and GenPrint) can process files larger than 2 gigabytes. For more information, see *Important Considerations when Upgrading* on page 18.

Using Addressee Records

Addressee Record functionality has been added to support class recipients and individual addressee-based processing. Each addressee is now written to batch files as a separate record for subsequent printing or processing. This lets you uniquely distribute documents for a given recipient type to a specific address, such as a mailing address, email address, or fax number.

Validating Key Field Lengths

The system now validates Key field lengths to make sure Key field data will fit in the field defined by the DFD. This additional check can help you determine why the system will not load a BDF group at runtime.

New Critical Error Code

Version 11.5 adds a new type of message, Critical Error, which always causes the program to stop processing. You can use this new error type with the new `ErrorCodeOverride` control group to specify the errors on which the system should stop processing.

Overriding Error Behavior

You can now tell the system what it should do when it encounters specific errors. The new `ErrorCodeOverride` control group lets you list error numbers and specify how you want the system to handle those errors.

Enhanced Error and Warning Messages

Version 11.5 includes changes to the messaging system to make it easier to translate error and warning messages.

DAL ENHANCEMENTS

The following changes were made to the Document Automation Language (DAL). See the [DAL Reference](#) for more information.

Using the TriggerForm Procedure

Use the new `TriggerForm` DAL procedure to add a form to a form set. Once added, the system evaluates the form's section triggers.

Using Addressee Information

Version 11.5 gives you two new DAL functions (`AddresseeCount` and `GetAddresseeValues`) so you can access information stored for an addressee associated with a recipient. You can use these functions to add addressee information to mailer pages or emails.

RULE ENHANCEMENTS

The following changes were made to the job, form set, section, and field-level rules available in Studio and run by Documaker Server. See the [Rules Reference](#) for more information.

Enhanced Graphic Support

Version 11.5 enhances the `AddMultiPageBitmap` rule to support these file formats in addition to PDF and TIFF:

- OS/2 and Windows bitmap, cursor, and icon files (.BMP)
- Windows Enhanced Metafile (.EMF)
- Encapsulated PostScript (.EPS)
- CCITT Group 3 Fax (.FAX)
- CompuServe Graphic Interchange Format (.GIF)
- Hypertext Markup Language (.HTM, .HTML)
- X-Windows Pixmap (.XPM)

- MIME-encoded email (.EML)
- Microsoft Outlook Messages (.MSG)
- Microsoft Word (.DOC)
- Portable Bitmap/Graymap/Pixmap (.PBM, .PGM, .PPM)
- Paintbrush, DCX (.PCX)
- HP Graphics Language (.HPG)
- Portable Network Graphics (.PNG)
- Microsoft Powerpoint (.PPT)
- Adobe Photoshop (.PSD)
- Rich Text Format (.RTF)
- Adobe Flash 6.x and 7.x “text only” (.SWF)
- Text, including ANSI, UTF-8, and EBCDIC (.TXT)
- Windows Metafile (.WMF)
- Microsoft Excel (.XLS)
- Extensible Markup Language (.XML)
- Adobe Postscript (.PS)

Running GenPrint in Single-step Mode

The new GenPrint rule provides all the functionality and flexibility of running the GenPrint program in single-step mode. For instance, you can use this rule to print the same recipient batch multiple times while running in single-step mode. This gives you a way to run in single-step mode and also print the same batch in multiple formats, such as a PDF batch for electronic delivery and a Metacode batch for mail.

DOCUPRESENTMENT ENHANCEMENTS

Accessing Documaker Resources via a Web Service

You can now use a web service to get the Workspace Definition file (WDF) used to provide resource information to the Documaker Add-In for Microsoft Word. This file contains information about the workspace such as recipients, triggers, and fields which makes it easier for Add-In users to insert these objects into their documents.

Printing with Missing Graphics

Now you can optionally retrieve and generate a form set from Docupresentment, via Documaker Bridge, even if the form set references an external graphic that is no longer available.

Returning a PDF File in a doPublish Response

Use the new doPublishAttachment INI option to enable a print stream produced by Documaker extract file processing to be returned in the EWPS doPublish response. Previously, only Documaker standard XML file sent to doPublish would result in an inline print stream in the response. Now any input to doPublish, such as a Documaker standard XML file or an extract file, can be configured to return base64 attachments.

Using the Jmeter Test Script to Test EWPS

The EWPS Jmeter test script provides a set of examples for each service request operation. These examples can help you more quickly implement your system. For more information, see [Introduction to Enterprise Web Processing Services](#).

DOCUTOOLBOX ENHANCEMENTS

The following enhancements affect the various tools that comprise Docutoolbox. For more information, see the [Docutoolbox Reference](#).

Using the META2TTF Utility

Use the new META2TTF utility to create TrueType fonts from Xerox Metacode fonts. Using TrueType fonts that match Metacode printer fonts improves how documents designed for Metacode printers appear on your screen.

LBYPROC Enhancements

You can use the new TermLevel and ZeroPromote INI options with the LBYPROC utility to control processing and the return codes generated during a promotion.

VRF2EXP Enhancements

Enhancements to the VRF2EXP utility let you pass Key1 and Key2 values and better handle DMG.FLST recipient records and VRF tag records.

Using the IStream Migration Utility

The new Oracle IStream Migration utility helps you migrate IStream content to Documaker. This utility extracts the content, rules, fields, and key information from IStream model documents and creates files that facilitate the migration to Documaker.

DOCUMAKER DESKTOP ENHANCEMENTS

For more information, see the [Documaker Workstation Administration Guide](#).

Additional Language Support

The spell checking and hyphenation features available in Documaker Studio, Docucreate, and Documaker Workstation now support these additional languages: Canadian English, Czech, Greek, Polish, Russian, Slovak, Turkish, and Welsh. In addition, version 11.5 adds hyphenation support for Turkish and Hungarian.

Enhanced Excel Export in the PPS Reporting Tool

You can now use any Microsoft Excel document (2000-2003 format .XLS file), including an ACORD Binding Authority Report, as a template for exporting information using the PPS Reporting Tool. See [Using the PPS Reporting Tool](#) for more information.

PRINTER AND FONT ENHANCEMENTS

Creating HTML Output in Multipart MIME Format

Use the new MPM print driver to produce output in multi-part MIME (MPM) format that contains both plain text and generic HTML contents. This lets the EPT print driver send MPM output as the email body and allow email clients that cannot read email in HTML format to alternatively receive a plain text version. For more information, see the *Setting Up Printers* chapter in the [Documaker Administration Guide](#) or the [Documaker Workstation Administration Guide](#).

Sending Emails in Multi-Part MIME Format

Documaker applications can now produce Multi-Part MIME (MPM) output using the new MPM Print Driver. With the enhanced Email Print (EPT) Driver, you can send MPM output as an email body and let email clients who cannot read email in HTML format alternatively receive the plain text. For more information, see the *Setting Up Printers* chapter in the [Documaker Administration Guide](#) or the [Documaker Workstation Administration Guide](#).

PLATFORM-WIDE ENHANCEMENTS

Enhanced Graphic Support

Version 11.5 enhances graphic support throughout the product.

Additional Code Page Support

Version 11.5 supports these additional code pages, which give you the ability to create the text placed on Documaker forms in more languages without having to use Unicode.

This FXR file	Includes Letter Gothic fonts for	And supports these languages
EASTEUR.FXR	Windows code page 1250	Polish, Czech, Slovak, Hungarian, Slovene, Bosnian, Croatian, Serbian (Latin script), Romanian, and Albanian
CRYILLIC.FXR	Windows code page 1251	Russian, Bulgarian, and other languages that use the Cyrillic alphabet
GREEK.FXR	Windows code page 1253	Modern Greek
TURKISH.FXR	Windows code page 1254	Turkish
BALTIC.FXR	Windows code page 1257	Estonian, Latvian, and Lithuanian

These FXR files and printer fonts are available on the Oracle Software Delivery Cloud.

MISCELLANEOUS STUDIO ENHANCEMENTS

Here is a list of miscellaneous changes made to Documaker Studio. For more information, see the [Documaker Studio User Guide](#).

- Documaker 11.5 patch 04 includes a new INI option that lets you turn on or off the automatic refreshing of the library grid.

```
< LibraryManager>
  LibAutoRefresh = No
```

Option	Description
--------	-------------

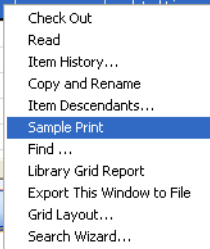
LibAutoRefresh	If you are experiencing delays when checking in or out forms or sections or when importing files, set this option to No. The default is Yes. Setting this option to No turns off the automatic update of the Library manager grid when you are updating resources. You can manually refresh the display by clicking the Filter Now button.
----------------	---

- You can now use the Sample Print option to print paragraph, paragraph list, and template files without having to check them out of the library. This option is available in Library manager when you right click on these file types.

- You can now tell Studio to stop loading library history. When working with libraries, if you choose the Library, History option and click Find Now to find an item, the search can take a long time, depending on the criteria you set and the amount of history in your library. If you decide to stop searching before Studio completes the search, just right click and choose the Stop Loading option.
- Use the Sample Print option to print paragraph (PAR), paragraph list (PSL), and template (TPL) files without having to check them out of the library. This option is available in Library manager when you right click on these file types.

This example shows the Sample Print option that appears when you right click when working with Paragraph Lists.

ED PRODUCT SELECTION	PSL	00001	00004	10/9/2007		EDS
NUMERIC PARAGRAPH LIST	PSL	00001	00001	1/1/1980		JDOE
TEST PARAGRAPH LIST	PSL	00001	EXP	12/12/2008		MSS
STYLE 1	STY	00001	00001	1/1/1980		JDOE
CORRESPONDENCE TEMPLATE JONES	TPL	00001	00001	1/1/1980		JDOE
SYMBOL	XDD	00001	00001	1/1/1980		JDOE

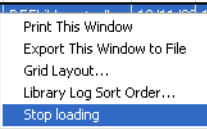


Note Paragraph list (PSL) files contain a collection of paragraphs assembled by Studio. While the content is the same, keep in mind the format differs from what you would actually see on a form you designed that included one or more of the paragraphs.

- When you choose the Library, History option and click Find Now to find an item, the search can take a long time, depending on the filter criteria you set and the amount of history in your library. If you decide to stop searching before Studio completes the search, just right click and choose the Stop Loading option.

Right click and choose Stop Loading to tell Studio to stop loading library history.

AMERGEN	CHECKED OUT	DEFLib\master.lby	12/11/20
SIGNATURE JONE	CHECKED IN		
AMERGEN AGENT	CHECKED IN		
AMERGEN AUTO	CHECKED IN		
AMERGEN BOAT	CHECKED IN		
AMERGEN BOP	CHECKED IN		



- Version 11.5 simplifies the way you add triggers. The Add Manual Trigger and Add Trigger options have been combined into a single Add Trigger option.
- Version 11.5 adds a Search option on the default right-click menu for all Studio trees. To use this option, choose Search from the menu. You can type the text you want to search for or select it from a list of your last ten searches. Click Match Case if you want a case sensitive search. Click Match Whole String if you want an exact match, remove the check mark if you want partial matches.

The search starts with the currently selected item and works its way down the tree until it reaches the bottom. It then continues searching from the top.

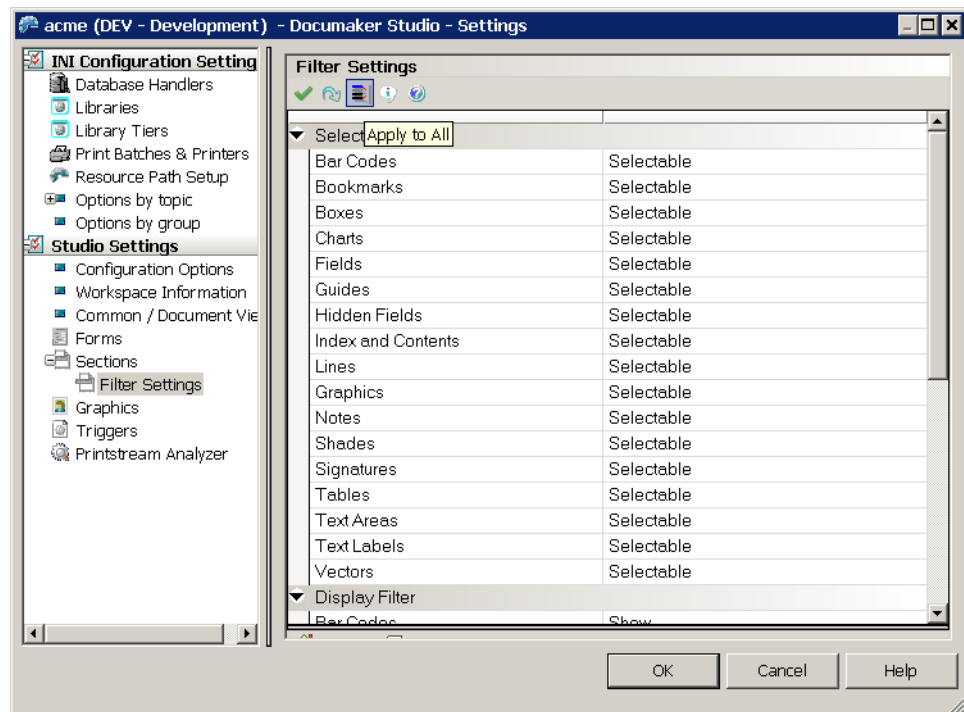
- Use the new Validate option on the Actions menu in the Common Fields manager to validate font IDs.
- If a font ID is invalid, Studio prompts you to select another font. If you select Yes, Studio shows you the Font Selection window.
- Use the new Move options when working with the Extract Data Dictionary to move the current node.

Option	Description
Up One Level	Moves the current node to be a sibling with its parent node.
To Root	Moves the node even with the top level.

- Combination boxes in the Studio's Script wizard now support auto-completion.
- This version provides a more descriptive error message when the process of extracting a library resource to a file on disk fails because the file already existed in the target location and had the read-only file attribute set.

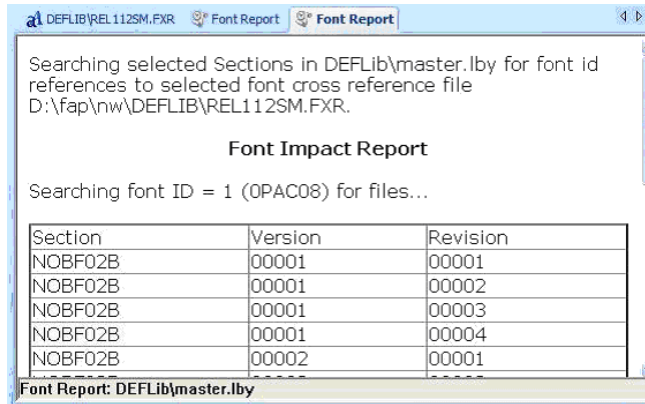
This improved error message appears when the library extract is being performed using Documaker Studio or the LBYPROC utility.

- You can now enter date ranges when searching for items in the library.
- Search and other windows in Studio's Scripts manager now indicates looping status and items changed while working on script changes.
- In Studio, when creating a workspace from a existing MRL, the system will copy the user dictionary, user.tlx, to the new workspace if the file exists.
- Version 11.5 adds the Spell Check, Symbol, Options, and Word Wrap options to the Notes Edit Data window in Studio's Section manager.
- Use the new Apply to All icon to apply the value of the current cell to all similar items under the same parent if that value is supported by the current cell. Here is an example from the Filter Settings window:



- Now you can run a Font Usage Report before you delete fonts from the Font manager. When you select a font to delete, the Delete Font window appears.

If you select the Run Impact Report option, a report similar to this one appears:



- Now you can create class, project, status, and mode settings from the values in imported resources when working in the Studio’s Library manager.
- Studio’s Library manager now remembers rename settings during extract preview so you do not have to re-enter the name after the preview.
- Studio’s Library manager now lets you search for notes in sections.
- The Documerge Field Report in Documerge Studio now shows the properties relevant to Documerge development.

Documerge Field Report

Fields

Source: C:\FAP\mstres\normalize metacode\DEFLIB\fdb_tga import test.dbf

Name	Type	Length	Replacement	Multidata	Line End	Delet
TEST1	BPSD - Single line	10	#	N	¢	N
TEST2	BPSD - Single line	15	!	N	¢	N
TEST3	BPSD - Single line	20	"	N	¢	N
TEST4	BPSD - Single line	5	@	N	¢	N
TEST5	VSD - Multi-line	25	#	N	¢	N

- Version 11.5 adds the Find command to the Rule Dictionary (master.ddt) in Studio.
- Version 11.5 adds the Select Field from Field Dictionary option to Studio’s Library manager so you can more easily specify a field name within the library search criteria.
- Now you can specify whether to include searching within sections when you run a Trigger report or an Impact Report for a trigger reference.
- Studio’s Test manager now shows you the page number.
- In Studio’s Common Fields Dictionary, the new Script window makes it easier to view long scripts.
- On the Form Validation Report, if a text area has no name, its coordinates are now listed under the name *Text Area*.

- Now Studio lets you specify a copy count when you add a new recipient via the Change Recipients Conversion Tool.
- Test manager now displays more detailed titles for the option panels you can select from the Print window.
- Now you can use the Next and Previous buttons to navigate through fields, boxes, or graphics in a text area.
- Now you can apply point sizes to all of the TrueType fonts you are importing via Studio's Font manager.
- Use the new Insert All option in Studio's Font manager to insert all of the standard font point sizes (4, 5, 6, 7, 8, 9, 10, 11, 12, 14, 16, 17, 18, 20, 22, 24, 30, 36) into the point size list.
- Expand All and Collapse All options were added to the right-click menu on the AFG Job File and Extract File in Studio's Test manager.

IMPORTANT CONSIDERATIONS WHEN UPGRADING

Keep in mind the following when upgrading from a prior version.

- After you install version 11.5 and before you start it for the first time, you must make sure the latest version of the Microsoft Visual C++ run-time components are installed on your computer. For your convenience, a copy of the VCREDIST.EXE update is included in the DLL directory where you installed version 11.5. Typically, this will be in the following directory:

```
c:\fap\dll\vcredist.exe
```

Run the VCREDIST.EXE program to install the Microsoft Visual C++ run-time components on your computer. For more information about the Microsoft Visual C++ run-time components, go to this web site:

<http://support.microsoft.com/kb/259403>

- When you open or check out an extract dictionary from the library in 11.5, a unique identifier is added to each record. Once the unique identifier is added, you will not be able to open or check out that extract dictionary in a prior version of Documaker.

If you expect to use that extract dictionary\workspace in a prior version, first make a backup.

- On Windows and UNIX implementations, to process files larger than 2GB, you must update the NEWTRN.DFD, TRNDFDFL.DFD, and RCBDFDFL.DFD files to reflect the larger file offsets. To do so, change the following fields in those file from a data type of LONG to a data type of LONG_LONG and expand the length to 19 characters:
 - X_OFFSET
 - NA_OFFSET
 - POL_OFFSET

Once finished, these fields should be defined as shown here:

```
< Field:X_Offset >
  INT_Type      = LONG_LONG
  EXT_Type      = CHAR_ARRAY_NO_NULL_TERM
  EXT_Length    = 19
  Key           = No
  Required      = No
< Field:NA_Offset >
  INT_Type      = LONG_LONG
  EXT_Type      = CHAR_ARRAY_NO_NULL_TERM
  EXT_Length    = 19
  Key           = No
  Required      = No
< Field:POL_Offset >
  INT_Type      = LONG_LONG
  EXT_Type      = CHAR_ARRAY_NO_NULL_TERM
  EXT_Length    = 19
  Key           = No
  Required      = No
```

- On z/OS, files larger than 2GB in size are processed as Virtual Storage Access Method (VSAM) Key Sequenced Data Set (KSDS) files. See the following topics in the [Documaker Installation Guide](#) for information on setting up the extract file and the NAFILE/POLFILE pair as VSAM KSDS files:
 - *Defining the Extract file as a VSAM KSDS*
 - *Creating NAFILES and POLFILES as VSAM KSDSs*

CONTACTING ORACLE GLOBAL CUSTOMER SUPPORT

If you have any questions about the installation or use of our products, please call 1.800.223.1711 or visit the My Oracle Support Web site at

<https://support.oracle.com>

Copyright © 2010, 2012, Oracle and/or its affiliates. All rights reserved.