

**Oracle® Insurance Rules  
Palette**

**Installation  
Instructions**

**Rules Palette Users**

Version 9.2.0.0.0

Part number: E16287-01

December 2009

Copyright © 2009, Oracle and/or its affiliates. All rights reserved.

This software and related documentation are provided under a license agreement containing restrictions on use and disclosure and are protected by intellectual property laws. Except as expressly permitted in your license agreement or allowed by law, you may not use, copy, reproduce, translate, broadcast, modify, license, transmit, distribute, exhibit, perform, publish, or display any part, in any form, or by any means. Reverse engineering, disassembly, or decompilation of this software, unless required by law for interoperability, is prohibited.

The information contained herein is subject to change without notice and is not warranted to be error-free. If you find any errors, please report them to us in writing.

If this software or related documentation is delivered to the U.S. Government or anyone licensing it on behalf of the U.S. Government, the following notice is applicable:

### **U.S. GOVERNMENT RIGHTS**

Programs, software, databases, and related documentation and technical data delivered to U.S. Government customers are “commercial computer software” or “commercial technical data” pursuant to the applicable Federal Acquisition Regulation and agency-specific supplemental regulations. As such, the use, duplication, disclosure, modification, and adaptation shall be subject to the restrictions and license terms set forth in the applicable Government contract, and, to the extent applicable by the terms of the Government contract, the additional rights set forth in FAR 52.227-19, Commercial Computer Software License (December 2007). Oracle USA, Inc., 500 Oracle Parkway, Redwood City, CA 94065.

This software is developed for general use in a variety of information management applications. It is not developed or intended for use in any inherently dangerous applications, including applications that may create a risk of personal injury. If you use this software in dangerous applications, then you shall be responsible to take all appropriate fail-safe, backup, redundancy, and other measures to ensure the safe use of this software. Oracle Corporation and its affiliates disclaim any liability for any damages caused by use of this software in dangerous applications.

Oracle is a registered trademark of Oracle Corporation and/or its affiliates. Other names may be trademarks of their respective owners.

This software and documentation may provide access to or information on content, products, and services from third parties. Oracle Corporation and its affiliates are not responsible for and expressly disclaim all warranties of any kind with respect to third-party content, products, and services. Oracle Corporation and its affiliates will not be responsible for any loss, costs, or damages incurred due to your access to or use of third-party content, products, or services.

Where an Oracle offering includes third party content or software, we may be required to include related notices. For information on third party notices and the software and related documentation in connection with which they need to be included, please contact the attorney from the Development and Strategic Initiatives Legal Group that supports the development team for the Oracle offering. Contact information can be found on the Attorney Contact Chart.

The information contained in this document is for informational sharing purposes only and should be considered in your capacity as a customer advisory board member or pursuant to your beta trial agreement only. It is not a commitment to deliver any material, code, or functionality, and should not be relied upon in making purchasing decisions. The development, release, and timing of any features or functionality described in this document remains at the sole discretion of Oracle.

This document in any form, software or printed matter, contains proprietary information that is the exclusive property of Oracle. Your access to and use of this confidential material is subject to the terms and conditions of your Oracle Software License and Service Agreement, which has been executed and with which you agree to comply. This document and information contained herein may not be disclosed, copied, reproduced, or distributed to anyone outside Oracle without prior written consent of Oracle. This document is not part of your license agreement nor can it be incorporated into any contractual agreement with Oracle or its subsidiaries or affiliates.

## Table of Contents

INTRODUCTION .....	4
PREREQUISITES.....	4
INSTALLATION .....	4
<i>Steps to Download the Rules Palette.....</i>	<i>4</i>
<i>Steps to Create an Environment Connection.....</i>	<i>6</i>

## Introduction

The Rules Palette can be downloaded from the Rules Palette Web Application Utility. Your build manager will send the servername and port of the Web Application Utility, which you will type into the URL given in the instructions below. You will also receive three sets of user IDs and passwords. You will need this information when you create an environment connection in the Rules Palette.

After you have downloaded the Rules Palette and configured the environment connections, you will be able to begin working in the application.

## Prerequisites

- Servername and port for the Rules Palette Web Application Utility. This will come from your build manager.
- Rules Palette log-in user ID and password. This will come from your build manager.
- Database user ID and password. This will come from your build manager.
- IVS database user ID and password. This will come from your build manager. This database information is only necessary if you are using an IVS environment.
- Location of the database driver. Each type of database requires a specific driver(s). You will need to point to the location of the driver(s) during the environment creation.

## Installation

The following steps describe the procedure for downloading the Rules Palette from the Rules Palette Web Application Utility.

### Steps to Download the Rules Palette

1. In your browser, go to `http://servername:portnumber/PaletteConfig/` replacing the **servername** and **portnumber** with the correct information from your build manager.
2. Click **Download Palette Version**.



Figure 1: Web Application Utility Download link

3. Click **Download** next to the version of the Rules Palette that you want to download.

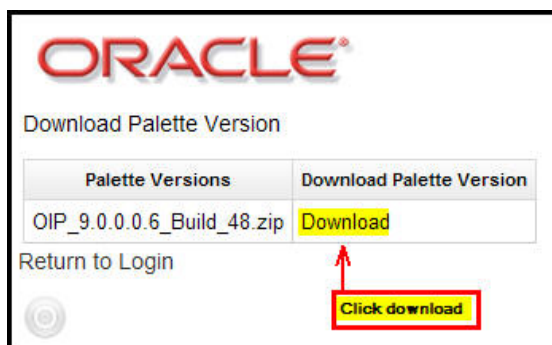


Figure 2: Web Application Utility Download list

4. Click **Open** from the File Download window when it asks what you want to do with the file. It will take a few minutes for the file to download. Once the file has been downloaded, it should automatically open with the compression software that is available on your system. If you do not have compression software, contact your IT department.
5. Extract the files using your compression software and save the files to your local computer in the following folder:

*C:/Program files/Oracle/RulesPalette*

**Note:** You may need to create a folder called Rules Palette within C:/Program Files/Oracle if one does not already exist.

7. Launch the Rules Palette via the executable file **asgraphicruleside.exe**. This file will run the Rules Palette. To launch the application, double-click on the executable file. This executable file can be found in the following directory:

*C:\Program Files\Oracle\RulesPalette\bin*

8. Create a shortcut on your Desktop. This will make it easier to access the Rules Palette. To create a shortcut, right-click on the asgraphiculeside.exe file (*C:/Program Files/Oracle/RulesPalette/bin*) and select **Create Shortcut**. Once the short-cut appears, drag it out onto your desktop.

## Steps to Create an Environment Connection

1. Double-click the Rules Palette short-cut icon you created on your desktop.
2. Click the **Main Explorer** tab.
3. Right-click inside the tab and select **Create Environment from Web Service**. The environment creation wizard will open.

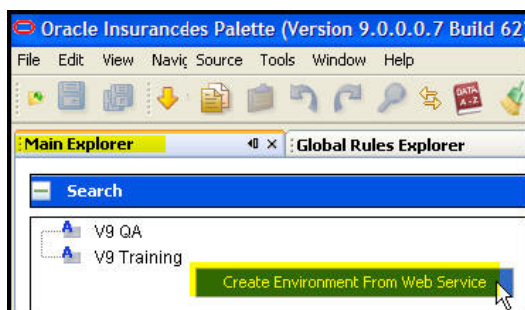


Figure 3: Rules Palette Right-Click Menu Option for Environment Creation

4. Enter an Environment Name. This should be a descriptive name for the environment that will allow you to distinguish between the environments you create. Alphabet characters only are allowed in the name. Numbers and special characters are not supported.
5. Enter the Configuration Server information provided by the build manager.
6. Enter the Configuration Port information provided by the build manager.
7. Enter the Palette user name provided by your build manager.
8. Enter the Palette password provided by your build manager.
9. Check the automatic log-in box if you want the application to automatically log you on after environment creation is complete.
10. Click **Test Configuration Server** to test your environment connection. If the connection is successful, click **Next**.

**Note:** If you receive an error message that says your username and password are incorrect, check your configuration server and port information as well. There are instances where errors in these fields also trigger the username and password error.

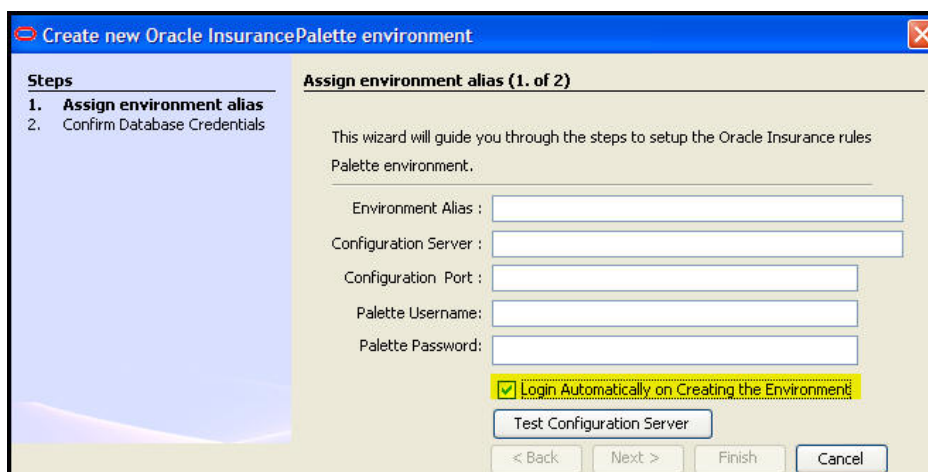


Figure 4: Step 1 of Environment Creation Wizard

11. Browse to the location of the jdbc driver files. MS SQL Server uses the **jtids.jar**. Oracle uses the **ojdbc14.jar**. DB2 uses three files and all three should be highlighted at the same time when you select a driver in the Browse window (**db2jcc**, **db2jcc\_license\_cisuz**, and **db2jcc\_license\_cu**)

**Note:** You will only need to specify the .jar file location the first time you set-up an environment. If you create additional environments, this Browse field will not display.

12. Enter the **User ID** and **password** for the OIPA database. The build manager will send this information to you. This is different from the user ID and password you will use to log-on to the Rules Palette.
13. Enter the **User ID** and **password** for the IVS database. The build manager will send this information to you. This is different from the user ID and password you will use to log-on to the Rules Palette.

**Steps**

1. Assign environment alias
2. **Confirm Database Credentials**

**Confirm Database Credentials (2. of 2)**

**Environment : V9 Training Environment**

Type :

Debug WebService :

**OIPA Database : SQLServer2005**

Enter the location for the SQLServer2005 JDBC .jar file above

Host :

Database Name :

User ID :

Password :

**IVS Database**

Host :

IVS Database Name :

Environment Name :  Track :

User ID :

Password :

**Annotations:**

- Red box: "Enter database user ID and log-in. This is different from your log-in ID and password." with an arrow pointing to the OIPA User ID field.
- Red box: "Enter IVS database log-in ID and password. This is different from your log-in ID and password." with an arrow pointing to the IVS Password field.

Figure 5: Step 2 of the Environment Creation Wizard

14. Click **Test Connection** to test your connection. Once both connections are successful, click **Finish**.

If you did not choose to automatically log-on after environment creation, you can do so now by right-clicking on the new environment node you just created. Select **Log-on** and enter your Rules Palette user ID and password, which are provided by the build manager.

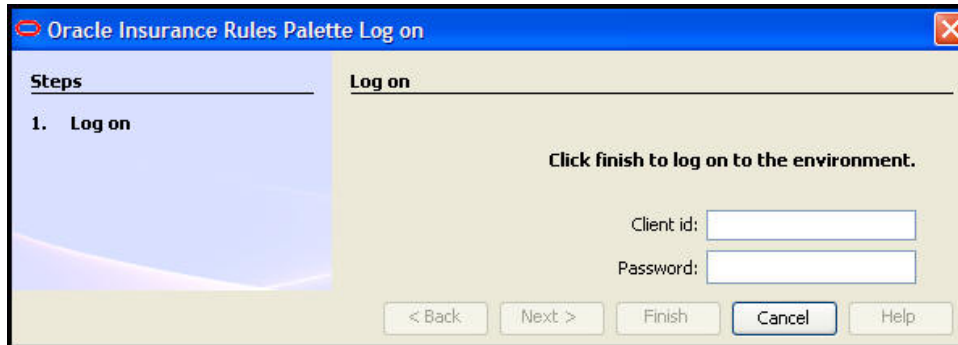


Figure 6: Log-on Window

**Note:** Refer to the Rules Palette help system to learn how to use the Rules Palette application. The help system can be accessed from inside the Rules Palette application.