

**Oracle® Enterprise Single Sign-on  
Logon Manager**

Installation and Setup Guide

Release 10.1.4.1.0

**E12635-01**

March 2009

E12635-01

Copyright © 2006 - 2008, Oracle. All rights reserved.

The Programs (which include both the software and documentation) contain proprietary information; they are provided under a license agreement containing restrictions on use and disclosure and are also protected by copyright, patent, and other intellectual and industrial property laws. Reverse engineering, disassembly, or decompilation of the Programs, except to the extent required to obtain interoperability with other independently created software or as specified by law, is prohibited.

The information contained in this document is subject to change without notice. If you find any problems in the documentation, please report them to us in writing. This document is not warranted to be error-free. Except as may be expressly permitted in your license agreement for these Programs, no part of these Programs may be reproduced or transmitted in any form or by any means, electronic or mechanical, for any purpose.

If the Programs are delivered to the United States Government or anyone licensing or using the Programs on behalf of the United States Government, the following notice is applicable:

U.S. GOVERNMENT RIGHTS Programs, software, databases, and related documentation and technical data delivered to U.S. Government customers are "commercial computer software" or "commercial technical data" pursuant to the applicable Federal Acquisition Regulation and agency-specific supplemental regulations. As such, use, duplication, disclosure, modification, and adaptation of the Programs, including documentation and technical data, shall be subject to the licensing restrictions set forth in the applicable Oracle license agreement, and, to the extent applicable, the additional rights set forth in FAR 52.227-19, Commercial Computer Software--Restricted Rights (June 1987). Oracle USA, Inc., 500 Oracle Parkway, Redwood City, CA 94065.

The Programs are not intended for use in any nuclear, aviation, mass transit, medical, or other inherently dangerous applications. It shall be the licensee's responsibility to take all appropriate fail-safe, backup, redundancy and other measures to ensure the safe use of such applications if the Programs are used for such purposes, and we disclaim liability for any damages caused by such use of the Programs.

Oracle, JD Edwards, PeopleSoft, and Siebel are registered trademarks of Oracle Corporation and/or its affiliates. Other names may be trademarks of their respective owners.

The Programs may provide links to Web sites and access to content, products, and services from third parties. Oracle is not responsible for the availability of, or any content provided on, third-party Web sites. You bear all risks associated with the use of such content. If you choose to purchase any products or services from a third party, the relationship is directly between you and the third party. Oracle is not responsible for: (a) the quality of third-party products or services; or (b) fulfilling any of the terms of the agreement with the third party, including delivery of products or services and warranty obligations related to purchased products or services. Oracle is not responsible for any loss or damage of any sort that you may incur from dealing with any third party.

## Table of Contents

Abbreviations and Terminology .....	2
About ESSO-LM .....	3
Installing the ESSO-LM Administrative Console.....	4
Installing the ESSO-LM Agent .....	8
Upgrading from Previous Versions.....	15
Configuration.....	16
Uninstalling ESSO-LM .....	17

## Abbreviations and Terminology

Following is a list of commonly used abbreviations and terminology.

Abbreviation or Terminology	Full Name
Administrative Console	ESSO-LM Administrative Console
Agent	Logon Manager
FTU	First Time Use Wizard
ESSO-AM	Oracle Enterprise Single Sign-on Authentication Manager
ESSO-PG	Oracle Enterprise Single Sign-on Provisioning Gateway
ESSO-KM	Oracle Enterprise Single Sign-on Kiosk Manager
ESSO-LM	Oracle Enterprise Single Sign-on
ESSO-PR	Oracle Enterprise Single Sign-on Password Reset

## About ESSO-LM

Oracle Enterprise Single Sign-on lets you use a single password to log on to any password-protected application on your desktop, your network, and the Internet. It works "out-of-the-box" (without programming or additional network infrastructure) with virtually all applications, including Windows, Web, proprietary, and host or mainframe applications. The *ESSO-LM Installation and Setup Guide* describes how to install and set up ESSO-LM.

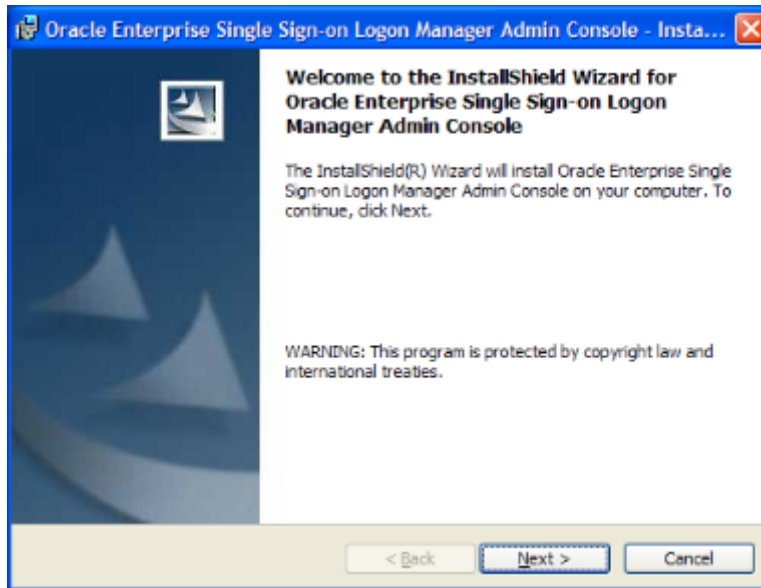
This document is intended for experienced administrators who are responsible for the planning, implementation, and deployment of ESSO-LM. This document provides step-by-step instructions for installing and configuring the ESSO-LM Administrative Console and the ESSO-LM Agent.

Administrators are expected to understand single sign-on concepts, such as password policies, logon methods, credential-sharing groups, and application configuration. They should be familiar with configuring directory servers, databases, and repositories. Persons completing the installation and configuration procedure should also be familiar with their organization's system standards. Readers should be able to perform routine security administrations tasks.

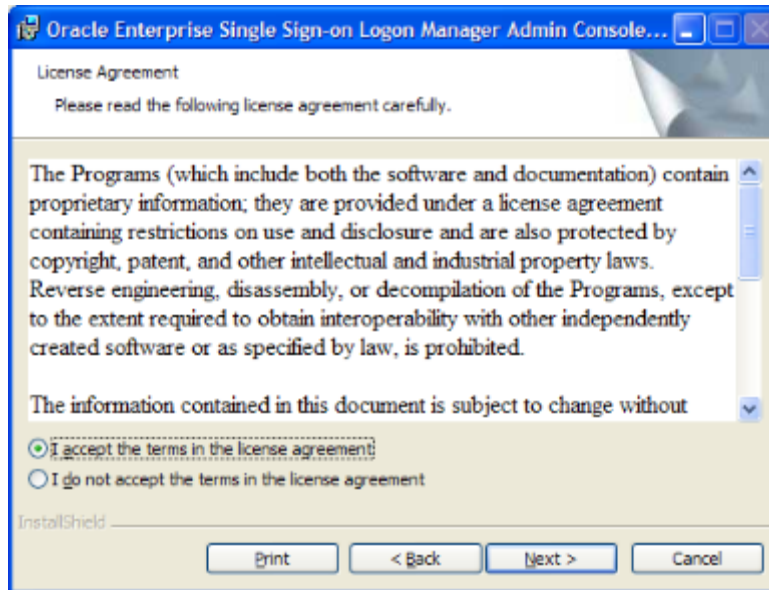
## Installing the ESSO-LM Administrative Console

To install and configure the ESSO-LM Administrative Console:

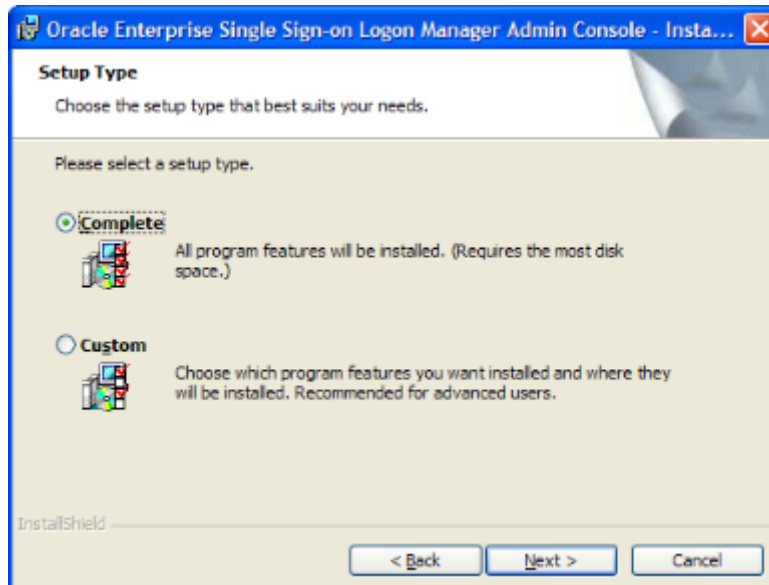
1. Close all programs.
2. Place the ESSO-LM installation CD in your CD-ROM drive (or start the installation from a shared network drive).
3. On the Welcome Panel, click **Next >**.



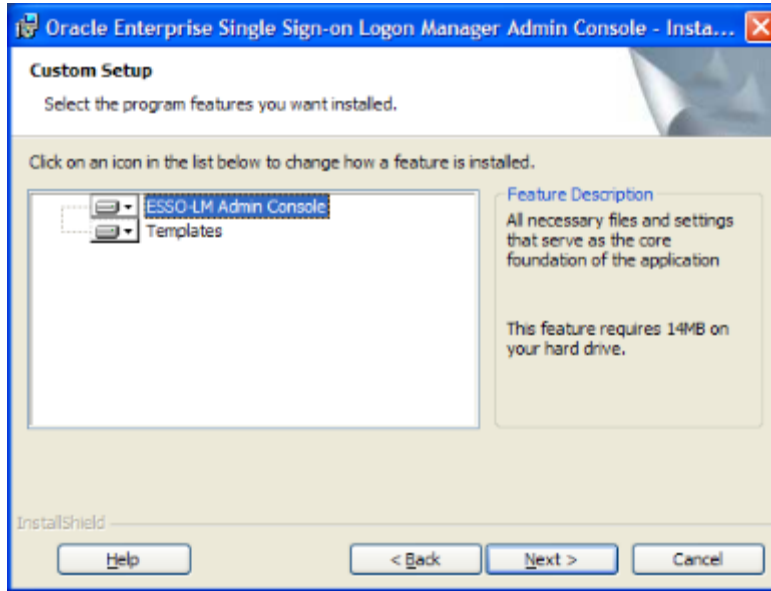
- On the License Agreement panel, read the license agreement carefully. If you agree to the terms in the license agreement, select **I accept the terms in the license agreement** and click **Next>** to continue.



- Select a setup type. The **Complete** option installs all program features. The **Custom** option allows you to choose which program features to install and where they will be installed. If you will be performing a custom installation, go to [Step 6](#). If not, go to [Step 7](#).



- If you are performing a custom setup, choose from the following installation options. Click Next when you are done.



ESSO-LM Administrative Console		
<p><i>(requires 14MB of space):</i> This option installs all necessary files and settings that serve as the core foundation of the application.</p> <p><b>Templates</b> <i>(requires 76KB of space):</i> Add-on templates that include additional supported application templates, configurations, and settings that can be included in the console.</p>		
<p><b>Change</b> Click this button to change the current installation destination folder for the Console. Select a different location, if desired, and click <b>OK</b>.</p>		
Help	Icon	Means the Feature:
<p>Click the <b>Help</b> button  to display the Custom Setup tips. Each icon indicates the state of the available feature.</p>		Will be completely installed to the local hard drive.
		Will have selected subfeatures installed to the local hard drive.
		Will not be installed.

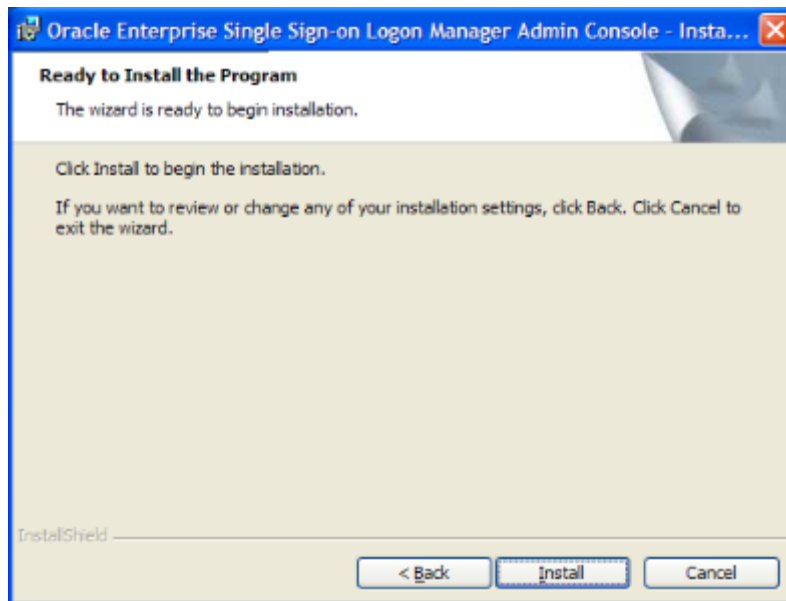


**ESSO-LM Administrative Console**

**Space**  
Click **Space** to display the Disk Space Requirements for installing the selected features on the local servers. Click **OK**.

Volume	Disk Size	Available	Required
C:	93GB	16GB	19MB
F:	189GB	177GB	0KB
Z:	0KB	0KB	0KB

7. The InstallShield Wizard is ready to begin the installation. Click **Install**.

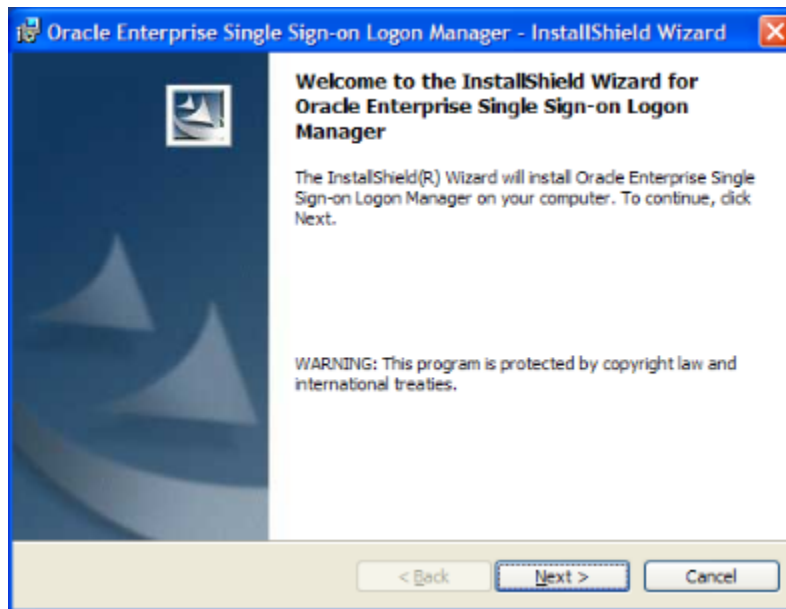


8. Wait for the installation to complete. When the Completed screen displays, click **Finish**.

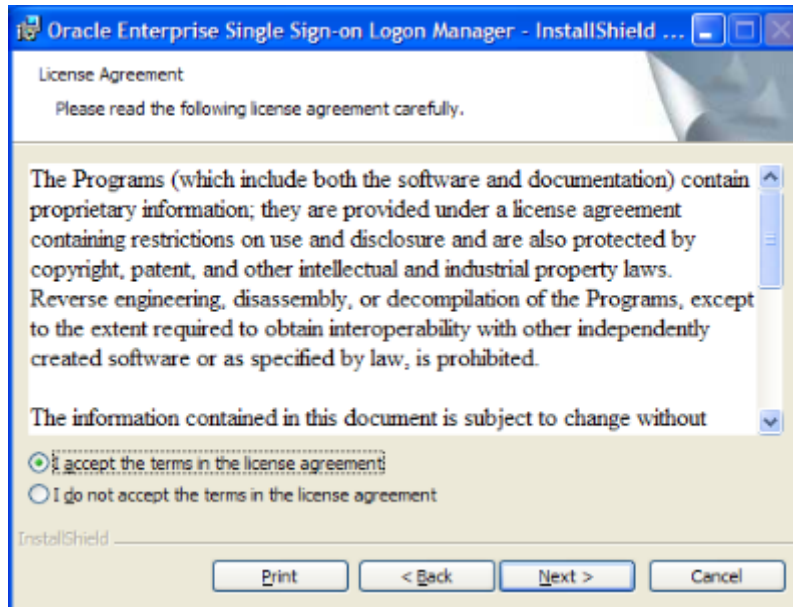
## Installing the ESSO-LM Agent

To install and configure the ESSO-LM Agent:

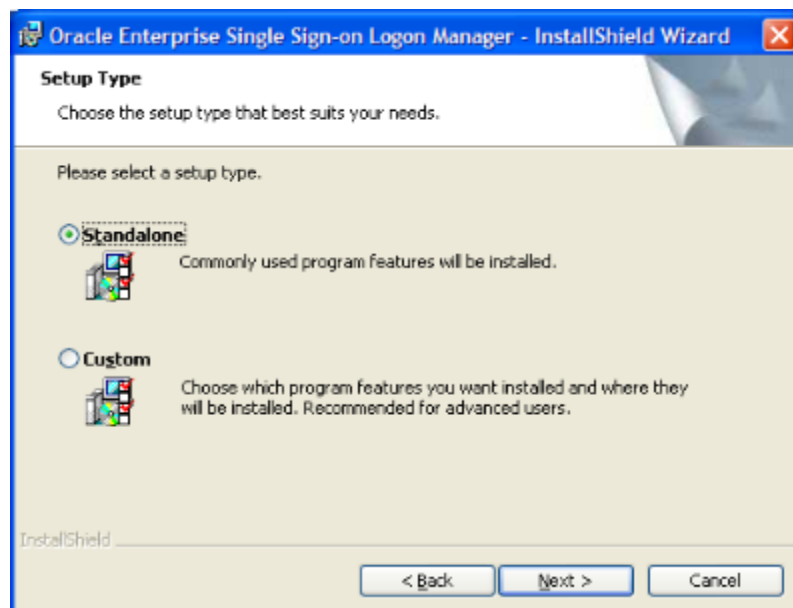
1. Close all programs.
2. Place the ESSO-LM installation CD in your CD-ROM drive (or start the installation from a shared network drive).
3. On the Welcome Panel, click **Next >**.



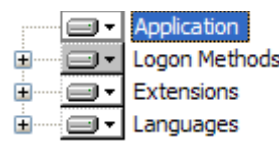
- On the License Agreement panel, read the license agreement carefully. If you agree to the terms in the license agreement, select **I accept the terms in the license agreement** and click **Next>** to continue.

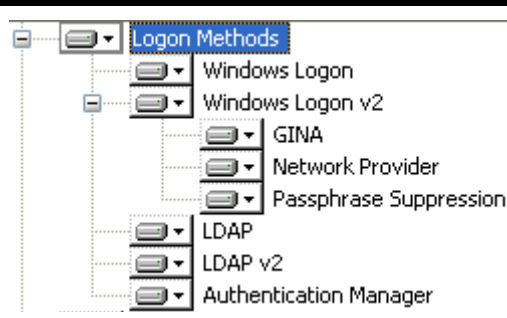


- Select a setup type. The **Standalone** type installs commonly used program features. The **Custom** option allows you to choose which program features to install. If you will be performing a custom installation, go to Step 6. If not, go to Step 7.



6. If you are performing a custom setup, choose from the following installation options:

Application	
<p><i>(requires 2607KB of space)</i></p> <p>This option installs all necessary files and settings that serve as the core foundation of the application.</p>	


Logon Methods	
<p><i>(requires 512 bytes of space)</i></p> <p>The logon methods are plug-ins that provide different methods for logging onto ESSO-LM. By default, Windows Logon is installed. The plug-ins available are:</p>	
<p><b>Windows Logon</b> <i>(requires 77KB of space)</i></p>	<p>Plug-in that enables logging onto ESSO-LM by logon to Windows. (72KB)</p>
<p><b>Windows Logon v2</b> <i>(requires 109KB of space)</i></p>	<p>Plug-in that enables logging onto ESSO-LM by logon to Windows. This plug-in also includes secure passphrase and GINA support. (109KB)</p>
<p><b>GINA</b> <i>(requires 117KB of space)</i></p>	<p>GINA module that works with the Windows Domain logon method. (104KB)</p> <p><b>Note:</b> You must select between GINA and Network Provider. It is not possible to install both methods.</p>
<p><b>Network Provider</b> <i>(requires 339KB of space)</i></p>	<p>Eliminates double authentication from occurring when you the user logs on to Windows, unlocks the desktop, or changes the Windows password.</p> <p><b>Note:</b> You must select between Network Provider and GINA. It is not possible to install both methods.</p>
<p><b>Passphrase Suppression</b> <i>(requires 28KB of space)</i></p>	<p>Bypasses interactive passphrase authentication by using a secondary authentication method that returns the user's SID.</p>
<p><b>LDAP</b> <i>(requires 152KB of space)</i></p>	<p>Plug-in that enables logging onto ESSO-LM by logon to an LDAP directory. (116KB)</p>

Logon Methods	
<b>LDAP v2</b> <i>(requires 121KB of space)</i>	Plug-in that enables logging onto ESSO-LM by logon to an LDAP directory. This plug-in also includes secure passphrase support. <i>(93KB)</i>
<b>Authentication Manager</b> <i>(requires 65KB of space)</i>	This feature adds the capability to allow multiple logon methods to authenticate the user. <i>(61KB)</i>

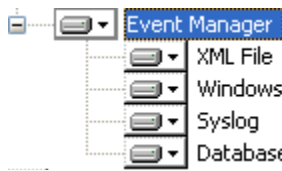
Extensions	
<i>(requires 1762 KB of space)</i> The extensions are plug-ins that enhance and extend functionality of the SSO application. By default, Backup\Restore Manager, Logon Manager, and Setup Manager are installed. The plug-ins available are:	
<b>Backup\Restore Manager</b> <i>(requires 80KB of space)</i>	This plug-in provides a simple file-based, backup-and-restore mechanism via a wizard interface.


Helper Objects	
<i>(requires 278KB of space)</i> These plug-ins provide the main credential management, request, and delivery interfaces. The plug-ins available are:	
<b>Microsoft Internet Explorer</b> <i>(requires 236KB of space)</i>	Extension helpers that add SSO support for Internet Explorer
<b>Mozilla Firefox</b> <i>(requires 1509KB of space)</i>	Extension helpers that add SSO support for Mozilla-based browsers

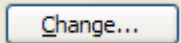
Helper Objects	
<b>Mainframe Emulator</b> <i>(requires 117KB of space)</i>	Extension helper that add SSO support for HLLAPI-based emulators
<b>Console Windows</b> <i>(requires 76KB of space)</i>	Support for Console windows (command prompt) within the ESSO-LM mainframe plug-in
<b>DOS Windows</b> <i>(requires 4KB of space)</i>	Support for DOS windows
<b>Legacy Emulators</b> <i>(requires 299KB of space)</i>	Support for 16-bit legacy HLLAPI-based emulators
<b>PuTTY</b> <i>(requires 108KB of space)</i>	Support for PuTTY windows within the ESSO-LM mainframe plug-in
<b>Java</b> <i>(requires 355KB of space)</i>	Extension helper that adds SSO support for Java applications natively
<b>SAP</b> <i>(requires 286KB of space)</i>	Extension helper that adds SSO support for SAP applications

















Synchronizer Manager	
<i>(requires 137KB of space)</i> This plug-in provides for the management of synchronization extensions to the application. The synchronizer plug-ins available are:	
<b>Active Directory Synchronizer</b> <i>(requires 116KB of space)</i>	Synchronization plug-in that supports storage and retrieval of credentials and settings from an Active Directory server.
<b>LDAP Synchronizer</b> <i>(requires 152KB of space)</i>	Plug-in that supports storage and retrieval of credentials and settings from an LDAP-compliant directory, such as SUN Java System Directory Server or eDirectory.
<b>ADAM Synchronizer</b> <i>(requires 117KB of space)</i>	Synchronization plug-in that supports storage and retrieval of credentials and settings from an ADAM server.
<b>File System Synchronizer</b> <i>(requires 77KB of space)</i>	Synchronization plug-in that supports storage and retrieval of credentials and settings from a file share.
<b>Database Synchronizer</b> <i>(requires 68KB of space)</i>	Synchronization plug-in that supports storage and retrieval of credentials and settings from a database.



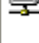


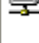


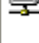
<b>Synchronizer Manager</b>	
<b>Roaming Profile Synchronizer</b> <i>(requires 57KB of space)</i>	Synchronization plug-in that supports roaming profiles.

<b>Event Manager</b>	
<i>(requires 64KB of space)</i> This plug-in provides for the management of event- logging extensions to the application. The plug-ins available are:	
<b>XML File</b> <i>(requires 36KB of space)</i>	Event Management plug-in that supports logging of events to a local XML file.
<b>Windows Event Extension</b> <i>(requires 57KB of space)</i>	Event Management plug-in that supports logging of events to the Windows Event Manager.
<b>Syslog</b> <i>(requires 120KB of space)</i>	Event Management plug-in that supports logging of system events.
<b>Database Event Extension</b> <i>(requires 84KB of space)</i>	Event Management plug-in that supports logging of events to the Database Event Manager.

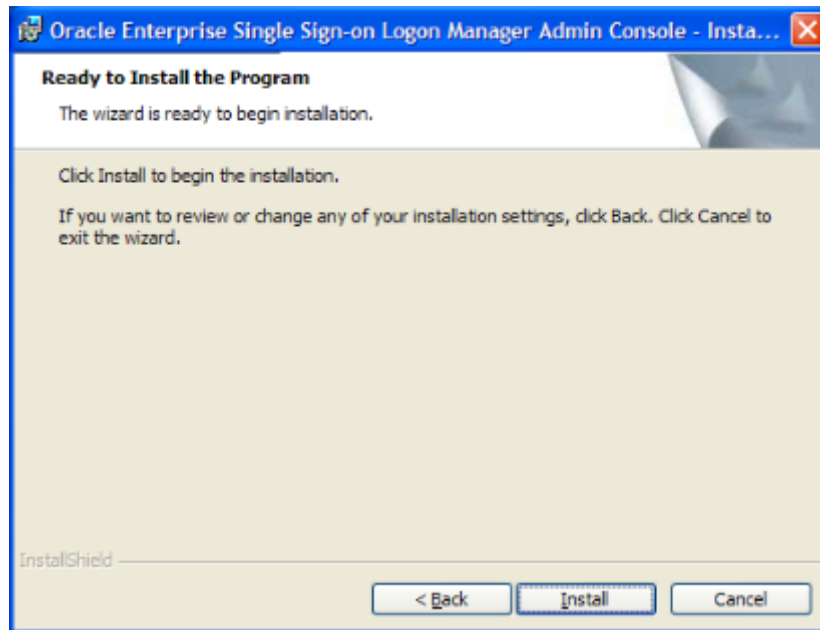
<b>Languages</b>	
<i>(requires 9776KB of space)</i> The localized language support packages that allow the Agent to be displayed in other languages.	
<b>Chinese</b> -4428KB	
<b>French</b> -5016KB	
<b>German</b> -5008kb	
<b>Italian</b> -5020KB	
<b>Japanese</b> -4748KB	
<b>Portuguese</b> -4964KB	
<b>Spanish</b> -5204KB	
<b>English</b> -4364KB	

<b>Change</b>	
Click this button to change the current installation destination folder for the Agent. Select the location and click <b>OK</b> .	

Help													
<p>Click the <b>Help</b> button  to display the Custom Setup tips. Each icon indicates the state of the available feature.</p>	<table border="1"> <thead> <tr> <th>Icon</th> <th>Means the feature</th> </tr> </thead> <tbody> <tr> <td></td> <td>Will be completely installed to the local hard drive.</td> </tr> <tr> <td></td> <td>Will have some subfeatures installed to the local hard drive.</td> </tr> <tr> <td></td> <td>Will not be installed.</td> </tr> <tr> <td></td> <td>Will be installed on first use.</td> </tr> <tr> <td></td> <td>Will be installed to run from the network.</td> </tr> </tbody> </table>	Icon	Means the feature		Will be completely installed to the local hard drive.		Will have some subfeatures installed to the local hard drive.		Will not be installed.		Will be installed on first use.		Will be installed to run from the network.
Icon	Means the feature												
	Will be completely installed to the local hard drive.												
	Will have some subfeatures installed to the local hard drive.												
	Will not be installed.												
	Will be installed on first use.												
	Will be installed to run from the network.												

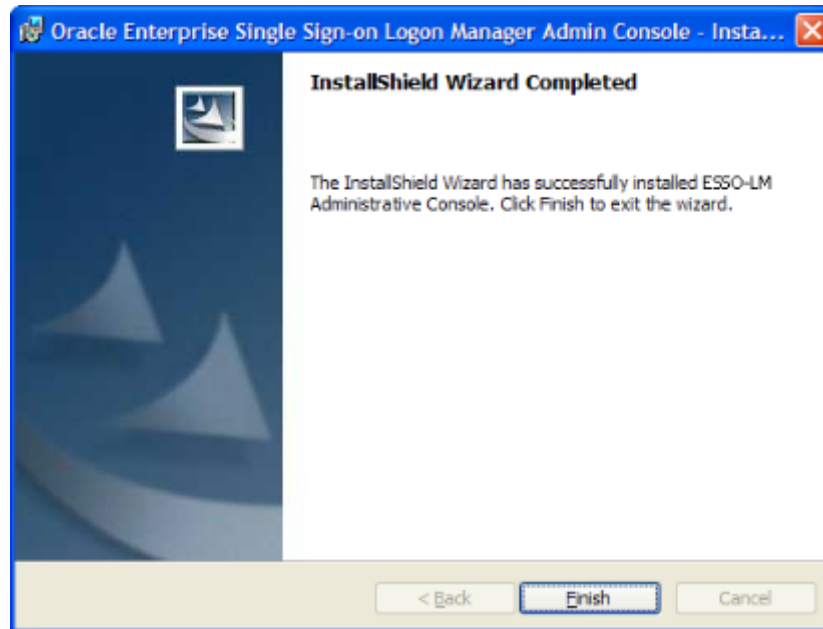
Space																	
<p>Click <b>Space</b> to display the <b>Disk Space Requirements</b> for the installation of the selected features on local servers. Click <b>OK</b>.</p>	<table border="1"> <thead> <tr> <th>Volume</th> <th>Disk Size</th> <th>Available</th> <th>Required</th> </tr> </thead> <tbody> <tr> <td> C:</td> <td>93GB</td> <td>16GB</td> <td>23MB</td> </tr> <tr> <td> F:</td> <td>189GB</td> <td>177GB</td> <td>0KB</td> </tr> <tr> <td> Z:</td> <td>0KB</td> <td>0KB</td> <td>0KB</td> </tr> </tbody> </table>	Volume	Disk Size	Available	Required	 C:	93GB	16GB	23MB	 F:	189GB	177GB	0KB	 Z:	0KB	0KB	0KB
Volume	Disk Size	Available	Required														
 C:	93GB	16GB	23MB														
 F:	189GB	177GB	0KB														
 Z:	0KB	0KB	0KB														


- The InstallShield Wizard is ready to begin the installation. Click **Install**.





- Wait for the installation to complete. When the Completed screen appears, click **Finish**.



- The ESSO-LM installation does not require a reboot, unless you installed the Windows Authentication v2 SSO GINA. If you installed the SSO GINA, you will be prompted to reboot your machine after you click **Finish**.
- After you restart the workstation or server, the ESSO-LM Welcome Screen/First Time Use (FTU) Wizard launches. Follow the instructions on the screen to complete the FTU Wizard. After the FTU is complete, an icon  will appear in the tool tray.

**Note:** Refer to the *ESSO-LM User Guide* and online help for information on completing the FTU Wizard and using the ESSO-LM Agent.

## Upgrading from Previous Versions

Upgrading to ESSO-LM 10.1.4.1.0 is supported for the following versions of ESSO-LM:

- 10.1.4.0.5
- 10.1.4.0.4
- 10.1.4.0.3

Oracle fully supports installing version 10.1.4.1.0 of ESSO-LM on top of existing installations of ESSO-LM as listed above. The newer installer will first uninstall the old version and then install the new version automatically. Refer to the topics in this guide for more information on installing both the ESSO-LM Agent and ESSO-LM Administrative Console.

**Note:** If the original installer was customized using the ESSO-LM Administrative Console, you must customize the new installer in the same manner. This must be done before performing the upgrade.

Oracle recommends always backing up all data prior to any installation.

## Basic Upgrade Steps

This procedure outlines the basic recommended steps to upgrade to ESSO-LM 10.1.4.1.0.

1. Perform a backup of your existing credentials.
2. Run your installation as outlined in the sections, [Installing the Administrative Console](#) and [Installing the Agent](#). The ESSO-LM Agent and Console can be upgraded in any order.

### **Note: For Microsoft Vista Users Upgrading from ESSO-LM 10.1.4.0.5**

Due to a limitation in the Microsoft VC90 CRT runtime merge module, prior to running the ESSO-LM 10.1.4.1.0 installer, users who are upgrading from ESSO-LM 10.1.4.0.5 under Microsoft Vista must install the Microsoft Visual C++ 2008 Redistributable located in the Utility folder of the installation CD.

The installer checks for the presence of the Microsoft Visual C++ 2008 Redistributable during an upgrade from ESSO-LM 10.1.4.0.5 to ESSO-LM 10.1.4.1.0. If the redistributable is missing, the installer displays the following error message and aborts the installation:

**Prior to installing this product, you must install the Microsoft Visual C++ 2008 Redistributable located in the utilities directory of the installation media.**

For technical information about this issue, see:

<http://connect.microsoft.com/VisualStudio/feedback/ViewFeedback.aspx?FeedbackID=361951>

3. Restore your backed up credentials to the new installation.
4. After the installer has finished and your credentials are restored, the upgrade is complete.

Refer to the *ESSO-LM Release Notes* to learn about the new product features.

## Configuration

Refer to the ESSO-LM Administrative Console Online Help for information about using the Administrative Console to configure ESSO-LM.

## Uninstalling ESSO-LM

To uninstall ESSO-LM:

1. Click **Start**, point to **Settings**, and then click **Control Panel**.
2. Open **Add/Remove Programs**.
3. To remove the ESSO-LM Agent, select ESSO-LM and click **Remove**. The following dialog box appears:



4. Click **Yes**.
5. Follow the prompts to uninstall ESSO-LM.
6. To uninstall the ESSO-LM Administrative Console, select **ESSO-LM Administrative Console** and click **Remove**.
7. Repeat steps 4 and 5.