

**Oracle® Enterprise Single Sign-on
Logon Manager**

Web Viewer Installation and Setup Guide

Release 10.1.4.0.5

E11974-01

April 2008

E11974-01

Copyright © 2006-2008, Oracle. All rights reserved.

The Programs (which include both the software and documentation) contain proprietary information; they are provided under a license agreement containing restrictions on use and disclosure and are also protected by copyright, patent, and other intellectual and industrial property laws. Reverse engineering, disassembly, or decompilation of the Programs, except to the extent required to obtain interoperability with other independently created software or as specified by law, is prohibited.

The information contained in this document is subject to change without notice. If you find any problems in the documentation, please report them to us in writing. This document is not warranted to be error-free. Except as may be expressly permitted in your license agreement for these Programs, no part of these Programs may be reproduced or transmitted in any form or by any means, electronic or mechanical, for any purpose.

If the Programs are delivered to the United States Government or anyone licensing or using the Programs on behalf of the United States Government, the following notice is applicable:

U.S. GOVERNMENT RIGHTS Programs, software, databases, and related documentation and technical data delivered to U.S. Government customers are "commercial computer software" or "commercial technical data" pursuant to the applicable Federal Acquisition Regulation and agency-specific supplemental regulations. As such, use, duplication, disclosure, modification, and adaptation of the Programs, including documentation and technical data, shall be subject to the licensing restrictions set forth in the applicable Oracle license agreement, and, to the extent applicable, the additional rights set forth in FAR 52.227-19, Commercial Computer Software--Restricted Rights (June 1987). Oracle USA, Inc., 500 Oracle Parkway, Redwood City, CA 94065.

The Programs are not intended for use in any nuclear, aviation, mass transit, medical, or other inherently dangerous applications. It shall be the licensee's responsibility to take all appropriate fail-safe, backup, redundancy and other measures to ensure the safe use of such applications if the Programs are used for such purposes, and we disclaim liability for any damages caused by such use of the Programs.

Oracle, JD Edwards, PeopleSoft, and Siebel are registered trademarks of Oracle Corporation and/or its affiliates. Other names may be trademarks of their respective owners.

The Programs may provide links to Web sites and access to content, products, and services from third parties. Oracle is not responsible for the availability of, or any content provided on, third-party Web sites. You bear all risks associated with the use of such content. If you choose to purchase any products or services from a third party, the relationship is directly between you and the third party. Oracle is not responsible for: (a) the quality of third-party products or services; or (b) fulfilling any of the terms of the agreement with the third party, including delivery of products or services and warranty obligations related to purchased products or services. Oracle is not responsible for any loss or damage of any sort that you may incur from dealing with any third party.

Table of Contents

Welcome to ESSO-LM Web Viewer	4
Installation Overview	5
System Requirements	6
Minimum System Requirements	6
Installation Steps	7

Welcome to ESSO-LM Web Viewer

Oracle Enterprise Single Sign-on Logon Manager (ESSO-LM) Web Viewer is an adaptation of ESSO-LM Logon Manager, developed specifically for the Web. ESSO-LM Web Viewer enables users to retrieve passwords when they are using a Web-enabled machine on which ESSO-LM is not available.

The functionality is similar to the ESSO-LM Logon Manager for viewing credentials. The most significant difference is that it is placed in a web browser, and focuses on security without sacrificing convenience to the user.

Installation Overview



Install ESSO-LM Web Viewer only on workstations where you have not installed ESSO-LM. ESSO-LM Web Viewer and ESSO-LM should not be run on the same workstation.

The following is a brief overview of the steps that must be taken in order to successfully install ESSO-LM Web Viewer. Each step is explained in detail later in this guide, Installation Steps.


- [Review System Requirements](#)
- [Install ESSO-LM Web Viewer](#)
- [Configure Internet Information Server settings](#)
- [Configure settings in the ESSO-LM Administrative Console](#)
- [Accessing ESSO-LM Web Viewer](#)

System Requirements


In order for ESSO-LM Web Viewer to install and function properly, your system must meet at least the following requirements.

Minimum System Requirements

- ✓ ESSO-LM Administrative Console and Agent v10.1.4.0.1 or later
- ✓ Microsoft Active Directory or Microsoft ADAM

	ESSO-LM Web Viewer only supports Windows Authentication v1 or v2 in conjunction with Active Directory or ADAM synchronizers.
---	--

- ✓ Microsoft Internet Information Server (IIS), version 5.0 or 6.0
- ✓ Microsoft® Windows® 2000 (SP3+), Windows Server 2003

	For security reasons, this server should not be the Domain Controller, and ESSO-LM should not be installed on the server.
---	---

- ✓ Microsoft .NET 2.0
- ✓ Windows Installer 3.1
- ✓ Internet Explorer 6.0 or 7.0 with 128-bit encryption on client machines
- ✓ Pentium III 733 MHz
- ✓ 128 MB RAM
- ✓ ~ 1 MB disk space

Installation Steps

Follow these steps to install and configure ESSO-LM Web Viewer.

Step 1: Review System Requirements

Make sure you have carefully reviewed the system requirements.

Step 2: Install ESSO-LM Web Viewer

Follow these steps to install and configure the ESSO-LM Web Viewer.

1. Close all programs.
2. Place the ESSO-LM installation CD in your CD-ROM drive (or start the installation from a shared network drive).
3. Browse to the ESSO-LM Web Viewer 10.1.4.0.5_070.msi and double-click to begin the installation.
4. On the Welcome Panel, click **Next>**.
5. On the License Agreement panel, read the license agreement carefully. If you agree to the terms in the license agreement, select **I accept the terms in the license agreement** and click **Next>** to continue.
6. Select the **Standard** setup type and click **Next>**. (Custom setup is an option if the ESSO-LM Web Viewer must be installed to a non-default directory; the same components are installed in either case.)
7. ESSO-LM Web Viewer is ready to be installed. Click **Install>**.
8. Wait for the installation to complete; then click **Finish**.

Step 3: Configure security settings for IIS

As part of installation, ESSO-LM Web Viewer is set to operate as the default IIS user. This account generally has insufficient permission to accomplish its tasks, however, and it is therefore suggested that this user be replaced with an administrative account on the domain.

To replace the default IIS user with an administrative account:

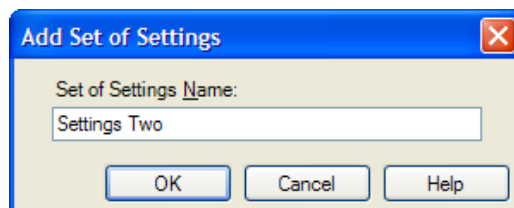
1. Open the Internet Information Services applet in Control Panel (Control Panel/Administrative Tools/Internet Information Services).
2. Locate the entry for the ESSO-LM Web Viewer, installed as a Default Web Site with the name SSOWebViewer.
3. Right-click the Context menu to view the Properties, and select the **Directory Security** tab.
4. Edit the Anonymous access and authentication control items and enter the Username and Password for the account into the appropriate boxes (for Windows 2000 Server only, uncheck **Allow IIS to control password**).
5. Confirm the password at the Windows prompt.

Be sure that this user has logged into the machine at least once. When in use, the Web Viewer stores temporary content under this user's profile, which will not exist until the user logs in. Software or settings should also be set to not delete this profile on logoff if it has been set otherwise in the past.

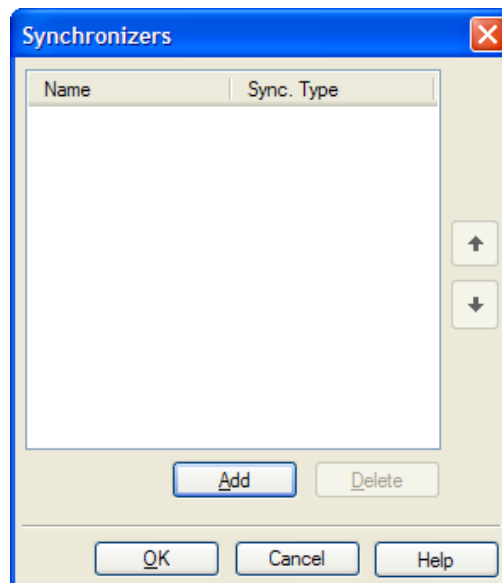
Step 4: Configure settings in the ESSO-LM Administrative Console

After you install ESSO-LM Web Viewer, configure the following settings in the ESSO-LM Administrative Console so that ESSO-LM Web Viewer has access to the credential repository.

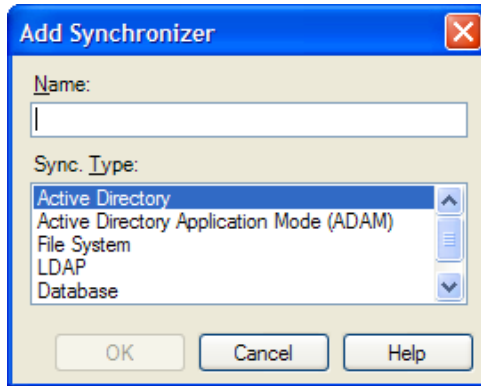
6. Open the ESSO-LM Administrative Console. Click **Start > Programs > ESSO-LM > ESSO-LM Console**.
7. Right-click **Global Agent Settings > New Settings**.
8. Enter a name and click **OK**.



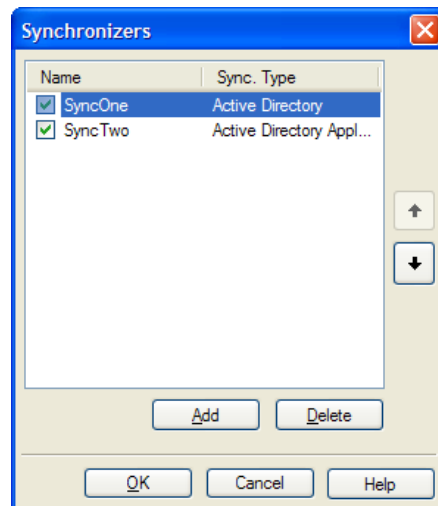
9. Expand the Settings tree that you created.
10. Right-click **Synchronization > Manage Synchronizers**.



11. Click **Add**. This is where you add the synchronizers for your Active Directory or ADAM repository, depending on which one you are using. Select the Sync Type and enter a name. Click **OK**.



12. On the Synchronizers panel, use the up and down arrows to change the synchronizer order. Once you have selected your synchronizers, click **OK**.



13. The synchronizer settings are now populated under the Synchronizer menu tree. Expand the synchronizer you are using and a Required and Advanced panel appears. For Active Directory, configure all settings below. For ADAM, you do not need to configure the User Paths or Use SSL settings.

14. Click *(AD or ADAM synchronizer)* > **Required**. Adjust the following settings to your preference:

Setting	Description
Extension Location	Path\filename of the AD or ADAM synchronizer extension: ADSync.dll or ADAMSyncExt.dll Note: The dll does not have to exist on the machine.
SSL (<i>AD only</i>)	Connect via SSL. If the repository server accepts SSL connections from the ESSO-LM Agent, set to 1. Otherwise, set to 0.
Servers (<i>ADAM only</i>)	Servers to try, in the format "computer[:port]" (one server per line), where computer is the server name, and port is assumed to be default (636 for SSL, 389 for no SSL) if not specified.

15. Click *(AD synchronizer)* > **Advanced**. Adjust the following settings to your preference:

Setting	Description
Servers <i>(AD only)</i>	Servers to try, in the format "computer[:port]" (one server per line), where computer is the server name, and port is assumed to be default (636 for SSL, 389 for no SSL) if not specified.
User Paths <i>(AD only)</i>	Fully qualified path of where the user account is located. There can be unlimited paths to search. The extension searches these in order, looking for the user account. If not found, the extension will search the directory tree. For example, <code>ou=users,dc=company,dc=com</code> .

16. Click **Synchronization**. Adjust the following settings to your preference:

Setting	Description
Sync Order	Order to synchronize to synchronization extensions (by extension node name created, not type). Examples: <ul style="list-style-type: none">▪ ADAM,AD▪ SyncOne,SyncTwo

17. Click **Web Viewer**. Adjust the following settings to your preference:

Setting	Description
Password Reveal Timeout	Controls the time (in seconds) until the Credential Detail screen removes a revealed password. The default is 45 seconds.
Session Timeout	Controls the timeout for ESSO-LM Web Viewer. After this amount of time of inactivity, the user will automatically be logged out. The default is 5 minutes.

Step 5: Accessing ESSO-LM Web Viewer

To access the ESSO-LM Web Viewer:

1. Open a Web Browser and enter this address:

<http://localhost/SSOWebViewer/Login.aspx>

where "localhost" is the actual server machine's IP address, if this is set up on a server where users will access it from remote sites.

2. Log onto ESSO-LM Web Viewer using the Active Directory or ADAM username and password for the user.