



ORACLE® ENTERPRISE PERFORMANCE MANAGEMENT SYSTEM

Release 11.1.2.2

Migrating Oracle Hyperion Profitability and Cost Management Applications



CONTENTS IN BRIEF

About This Document .....	2
Setting Up the Environment .....	2
Exercise 1: Importing a Profitability and Cost Management Application .....	3
Exercise 2: Exporting a Profitability and Cost Management Application .....	10

## About This Document

This document is a tutorial on how to migrate an Oracle Hyperion Profitability and Cost Management application from one environment to another. The steps include artifacts and data of Profitability and Cost Management and related components including Oracle Essbase and Oracle Hyperion Shared Services artifacts.

There are two exercises in this document that walk you through the steps needed to migrate artifacts and data from one environment to another.

- [Exercise 1: Importing a Profitability and Cost Management Application](#)

This exercise provides steps to import a Profitability and Cost Management application. – 30 Minutes

- [Exercise 2: Exporting a Profitability and Cost Management Application](#)

This exercise provides steps to export a Profitability and Cost Management application. – 30 Minutes

**Note:** Use the Shared Services native admin user to perform the procedures in these exercises.

**Note:** The application names shown in the screen shots in this document do not match the application names in the sample data; however, the steps remain the same.

## Setting Up the Environment

### Subtopics

- [Building an Environment](#)
- [Downloading Sample Data](#)

## Building an Environment

Before you start these exercises in this document, you will need a Release 11.1.2.2 environment configured with the following products:

- Oracle Hyperion Foundation Services
- Oracle Hyperion EPM Architect
- Profitability and Cost Management
- Essbase

## Downloading Sample Data

**Note:** You must use the 7-Zip software to unzip the sample data used in these exercises. Please download it before proceeding. Using other archiving utilities might result in migration errors.

You will need some sample data for these exercises. To download the sample data:

1. Go to the Oracle Documentation Library on Oracle® Technology Network (<http://www.oracle.com/technology/documentation/epm.html>).
2. Under **Oracle Enterprise Performance Management System Release 11.1.2.2**, click **View Library**.
3. On the **Foundation Services** tab, select the file titled **Migrating Oracle Hyperion Profitability and Cost Management Applications - Data**, and unzip its content to `EPM_ORACLE_INSTANCE\import_export`.

If the `import_export` folder does not exist, you must create it

You must use 7-Zip to unzip the contents of the file. The name of the actual zip file is `epm_migrate_hpcm_app_data.zip`.

4. Ensure that the **HPCMAAppSuite1** and **HPCMAAppSuite2** folders are in `EPM_ORACLE_INSTANCE\import_export`.

## Exercise 1: Importing a Profitability and Cost Management Application

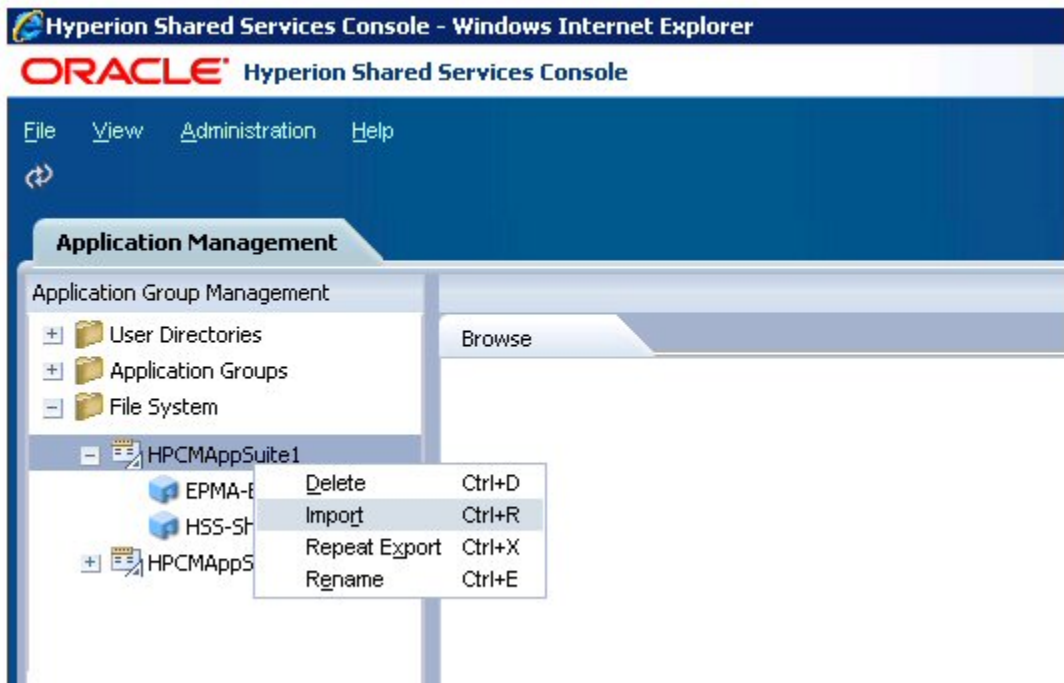
### Subtopics

- [Step 1: Import Profitability and Cost Management Performance Management Architect Metadata and Shared Services Artifacts](#)
- [Step 2: Import Profitability and Cost Management Application Artifacts and Essbase Cubes](#)

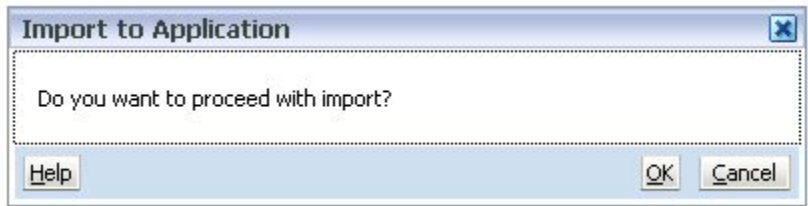
### Step 1: Import Profitability and Cost Management Performance Management Architect Metadata and Shared Services Artifacts

- To import Profitability and Cost Management Performance Management Architect metadata and Shared Services artifacts:
  - 1 **Log in to Oracle Hyperion Shared Services Console** (`http://<host>:<port>/interop/index.jsp`).
  - 2 **Expand File System**, right-click **HPCMAAppSuite1**, and select **Import**.

Note that the HPCMAAppSuite1 folder has related artifacts from Oracle Hyperion Shared Services and Performance Management Architect. The data set is divided into two parts because the Oracle Hyperion EPM Architect application has to be deployed before you can import other application artifacts.



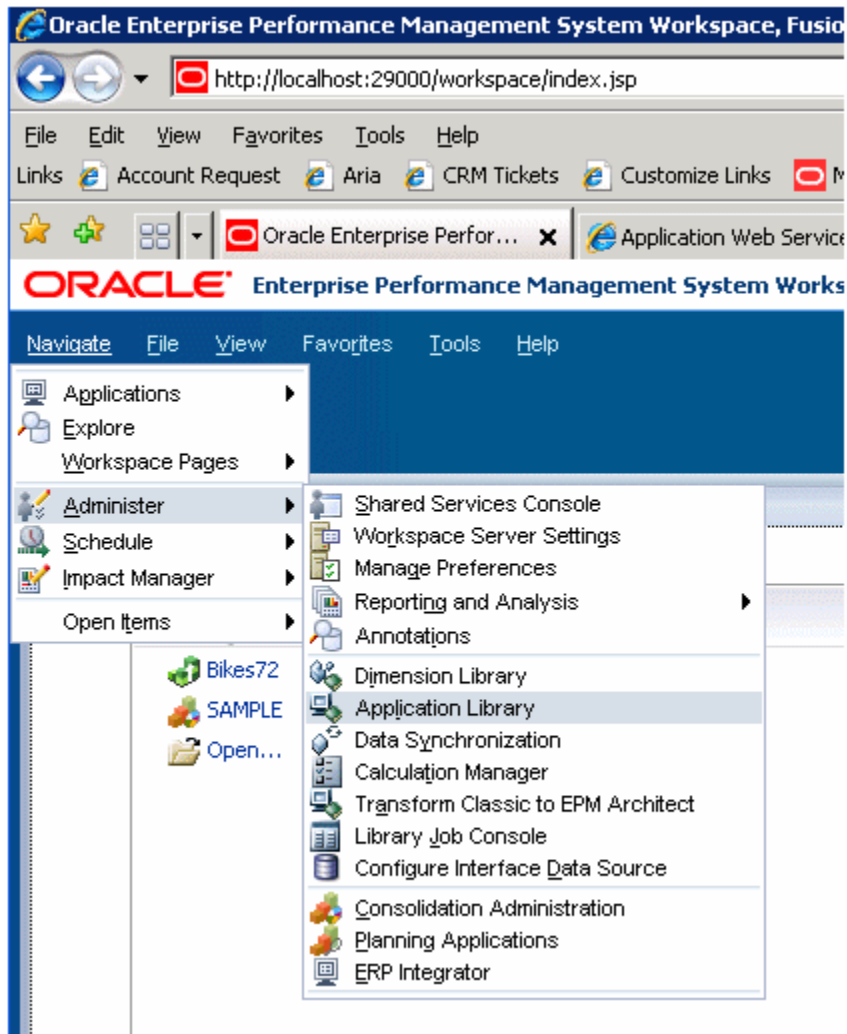
3 Select **OK** when asked if you want to proceed with the import.



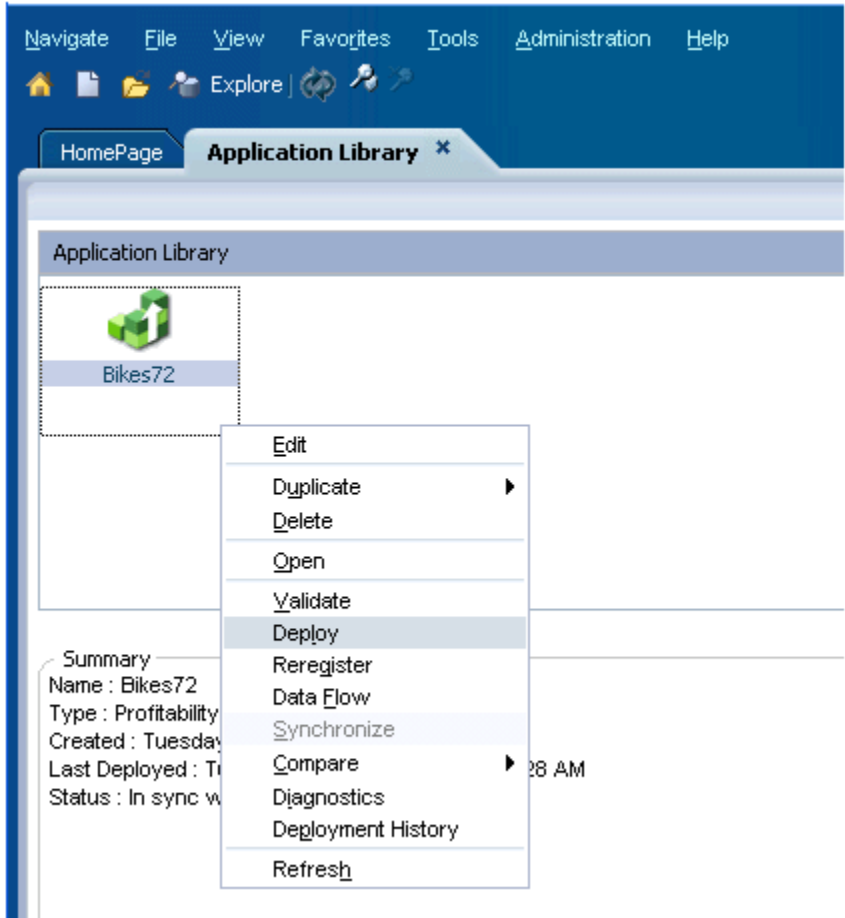
4 Wait for the import operation to complete.

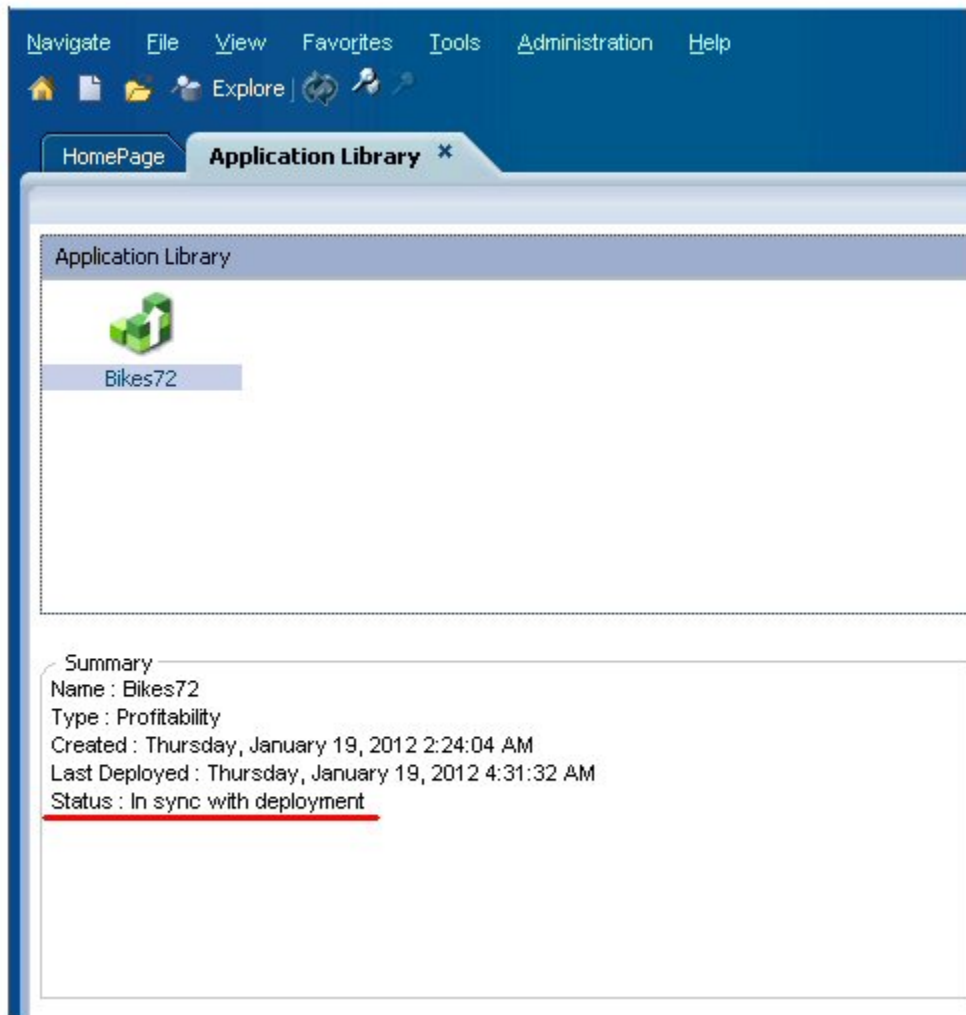
admin	HPCMAAppSuite1...	-	EPM Architect	January 10, 2012 07:42:10	January 10, 2012 07:42:25	00:00:15	Completed
	HPCMAAppSuite1...	-	Shared Services				

5 Log in to Oracle Hyperion Enterprise Performance Management Workspace and navigate to the Profitability and Cost Management application library by selecting **Navigate**, then **Administer**, and then **Application Library**.



6 Deploy the Profitability and Cost Management application and wait for it to complete.

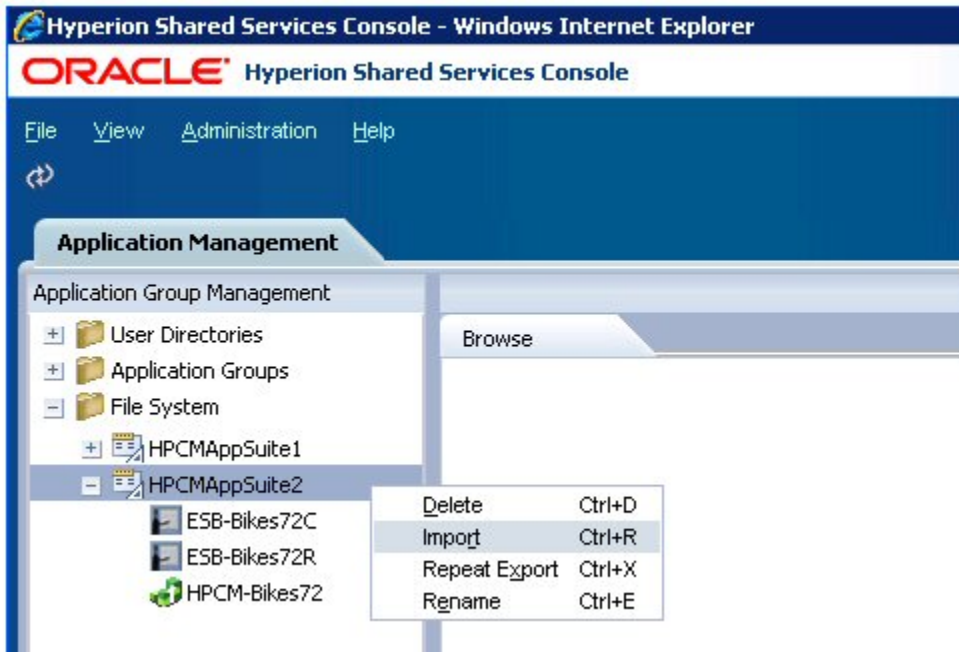




## Step 2: Import Profitability and Cost Management Application Artifacts and Essbase Cubes

- To import Profitability and Cost Management application artifacts and Essbase cubes:
  - 1 Log in to Shared Services Console (<http://<host>:<port>/interop/index.jsp>).
  - 2 Expand **File System**, right click **HPCMAAppSuite2**, and select **Import**.

Note that the HPCMAAppSuite2 folder has related artifacts (including data) from Profitability and Cost Management and Essbase. These artifacts can now be imported because the application has been deployed.



3 Wait for the import to complete.

admin	HPCMApSuite2...	-	Bikes72C	January 10, 2012 07:44:17	January 10, 2012 07:45:13	00:00:56	Completed
	HPCMApSuite2...	-	Bikes72R				
	HPCMApSuite2...	-	Bikes72				

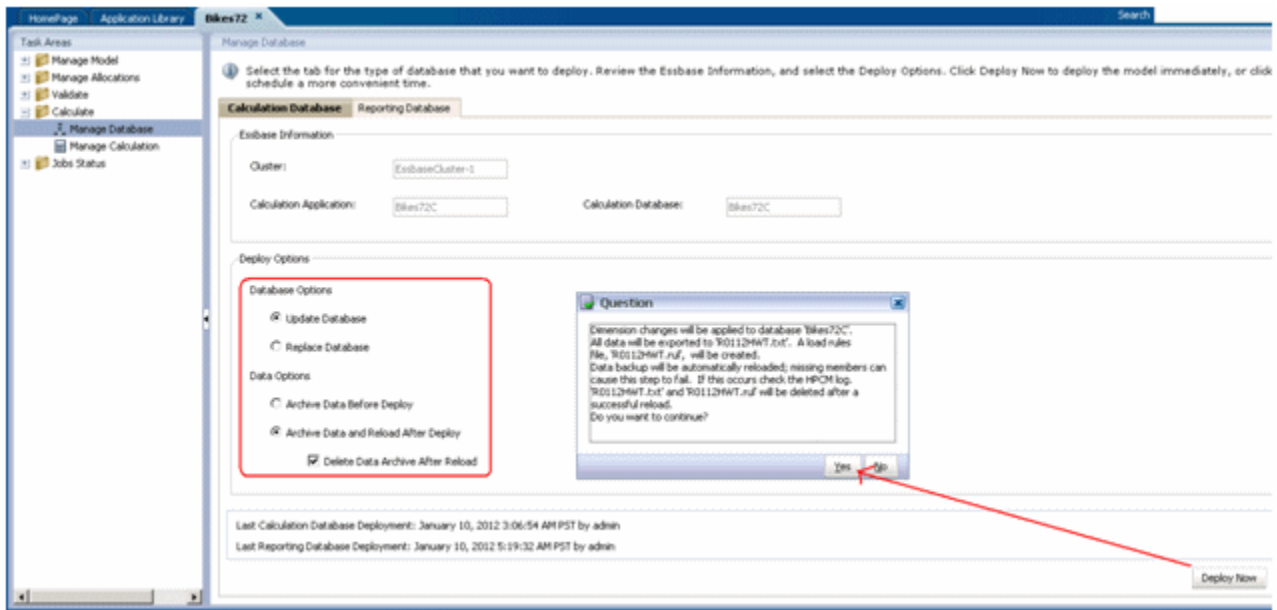
4 Log in to Oracle Hyperion Enterprise Performance Management Workspace and navigate to the Profitability and Cost Management application you just imported by selecting **Navigate**, then **Applications**, then **Profitability**, and then *<application name>*.

In this example, the *<application name>* is Bikes72.



5 In the Oracle Hyperion Profitability and Cost Management application, expand **Calculate**, select **Manage Database**, and redeploy both the Calculation and Reporting cubes to sync them up.

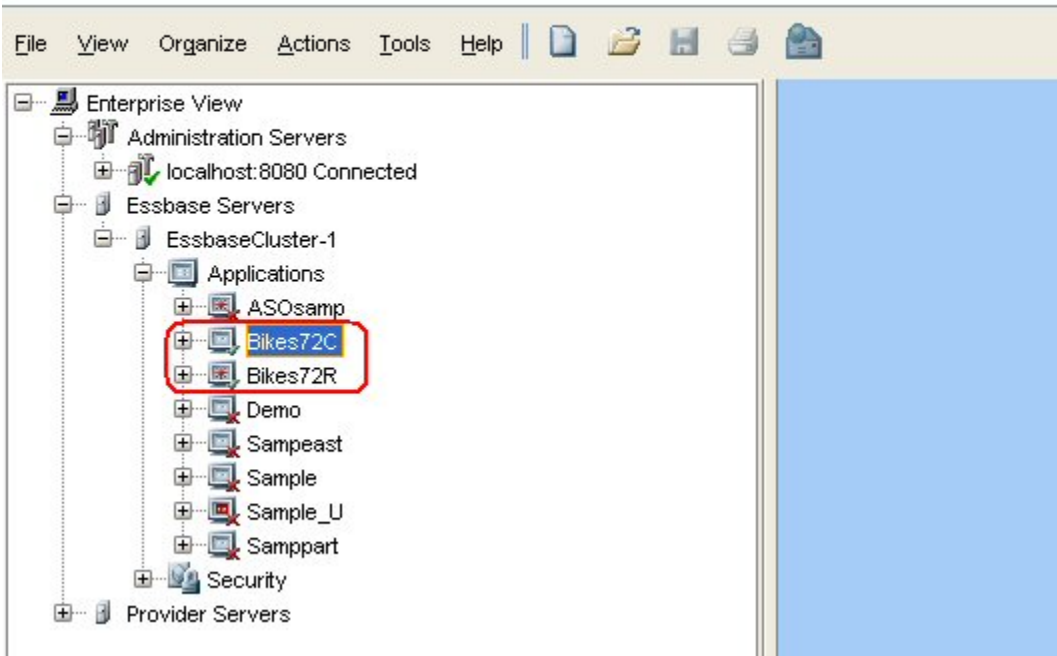




- Log in to Oracle Essbase Administration Services Console and verify that both Oracle Essbase cubes were deployed successfully.

Oracle® Essbase Administration Services 11.1.2 - admin connected on localhost:8080

## ORACLE® Essbase Administration Services



## Exercise 2: Exporting a Profitability and Cost Management Application

► To export a Profitability and Cost Management application:

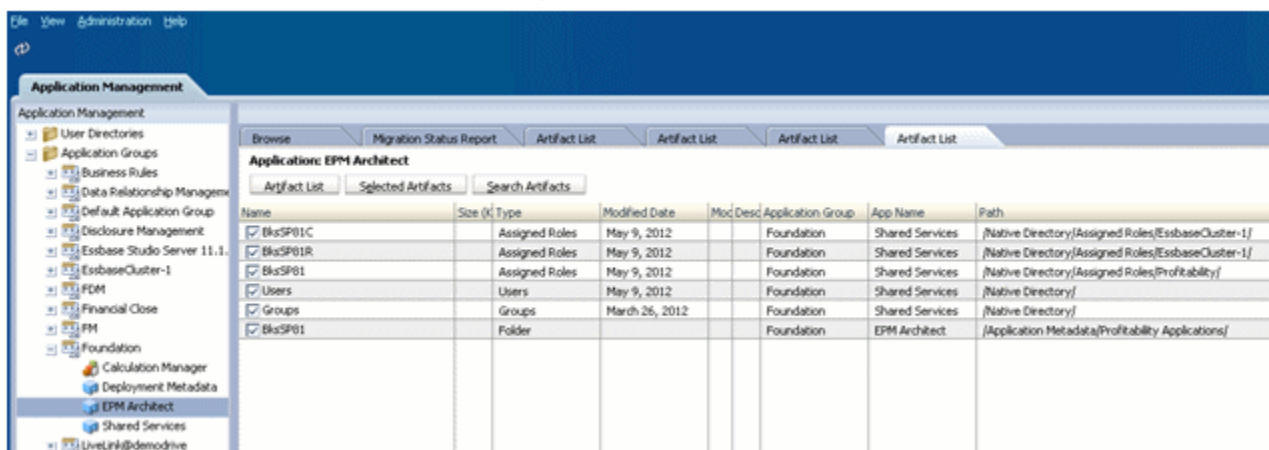
1 Log in to Oracle Hyperion Shared Services Console (<http://<host>:<port>/interop/index.jsp>).

2 Do one of the following:

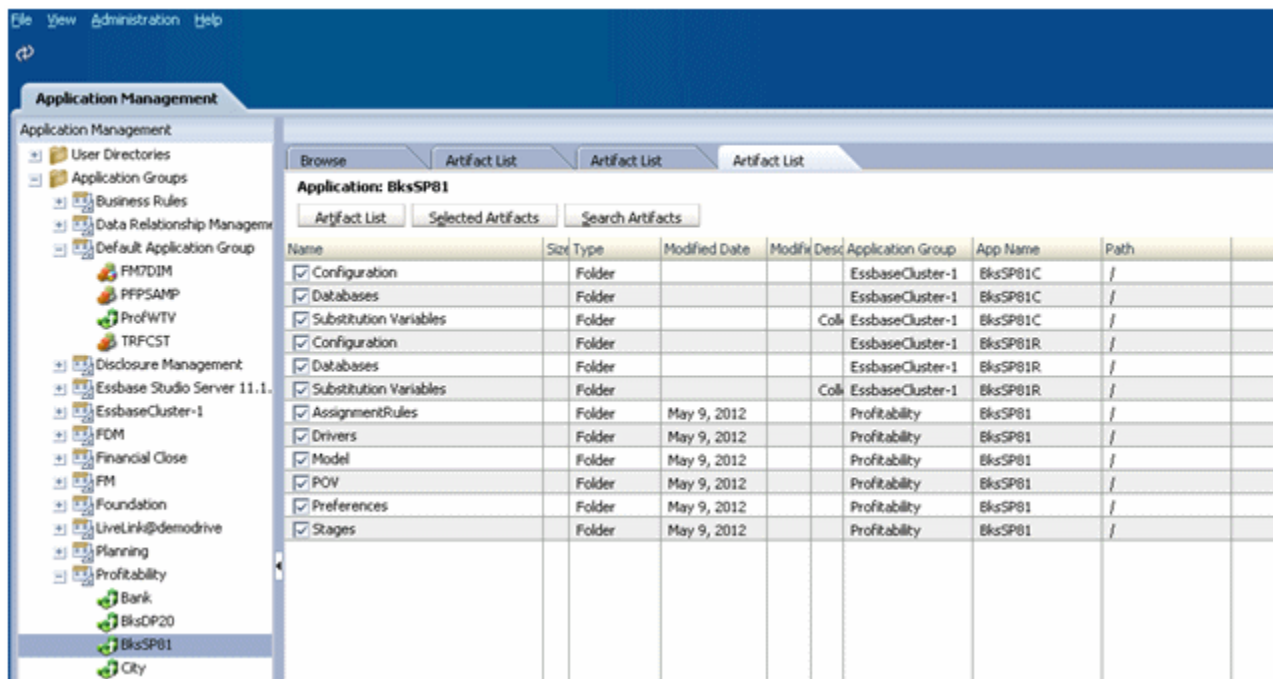
- Select the artifacts individually from multiple applications and export them into a single folder.

To do this:

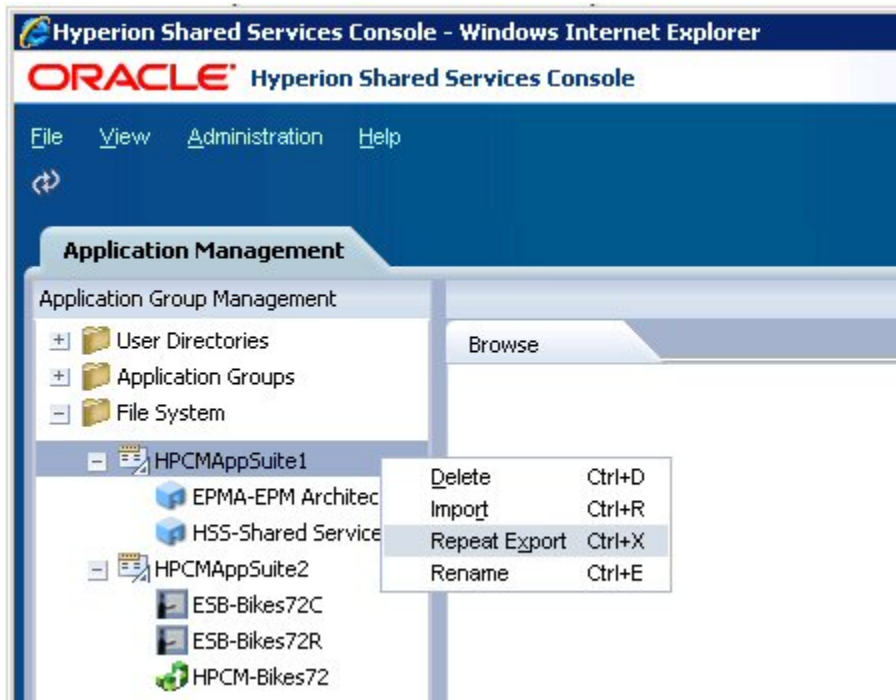
a. Select the artifacts in the following screen capture and export them to a folder.



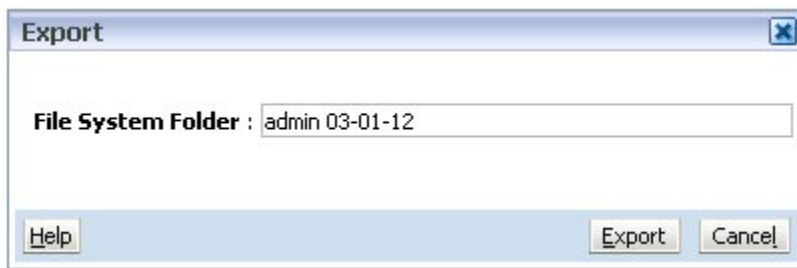
b. Select the artifacts in the following screen capture and export them to a second folder.



- Do a Repeat Export on the **HPCMApSuite1** and **HPCMApSuite2** folders  
To do this:
  - Right-click **HPCMApSuite1** and select **Repeat Export**.



- When prompted for a File System folder name, specify a name or leave the default name.



- c. Wait for the export operation to complete.
- d. Right-click **HPCAppSuite2** and select **Repeat Export**.
- e. When prompted for a File System folder name, specify a name or leave the default name.
- f. Wait for the export operation to complete.



## COPYRIGHT NOTICE

EPM System Migrating Oracle Hyperion Profitability and Cost Management Applications, 11.1.2.2

Copyright © 2011, 2012, Oracle and/or its affiliates. All rights reserved.

Authors: EPM Information Development Team

Oracle and Java are registered trademarks of Oracle and/or its affiliates. Other names may be trademarks of their respective owners.

This software and related documentation are provided under a license agreement containing restrictions on use and disclosure and are protected by intellectual property laws. Except as expressly permitted in your license agreement or allowed by law, you may not use, copy, reproduce, translate, broadcast, modify, license, transmit, distribute, exhibit, perform, publish, or display any part, in any form, or by any means. Reverse engineering, disassembly, or decompilation of this software, unless required by law for interoperability, is prohibited.

The information contained herein is subject to change without notice and is not warranted to be error-free. If you find any errors, please report them to us in writing.

If this is software or related documentation that is delivered to the U.S. Government or anyone licensing it on behalf of the U.S. Government, the following notice is applicable:

### U.S. GOVERNMENT RIGHTS:

Programs, software, databases, and related documentation and technical data delivered to U.S. Government customers are "commercial computer software" or "commercial technical data" pursuant to the applicable Federal Acquisition Regulation and agency-specific supplemental regulations. As such, the use, duplication, disclosure, modification, and adaptation shall be subject to the restrictions and license terms set forth in the applicable Government contract, and, to the extent applicable by the terms of the Government contract, the additional rights set forth in FAR 52.227-19, Commercial Computer Software License (December 2007). Oracle America, Inc., 500 Oracle Parkway, Redwood City, CA 94065.

This software or hardware is developed for general use in a variety of information management applications. It is not developed or intended for use in any inherently dangerous applications, including applications that may create a risk of personal injury. If you use this software or hardware in dangerous applications, then you shall be responsible to take all appropriate fail-safe, backup, redundancy, and other measures to ensure its safe use. Oracle Corporation and its affiliates disclaim any liability for any damages caused by use of this software or hardware in dangerous applications.

This software or hardware and documentation may provide access to or information on content, products, and services from third parties. Oracle Corporation and its affiliates are not responsible for and expressly disclaim all warranties of any kind with respect to third-party content, products, and services. Oracle Corporation and its affiliates will not be responsible for any loss, costs, or damages incurred due to your access to or use of third-party content, products, or services.