

Oracle® Documaker

Customizing iPPS

version 3.12

Part number: E17552-01

October 2011

Copyright © 2009, 2011, Oracle and/or its affiliates. All rights reserved.

The Programs (which include both the software and documentation) contain proprietary information; they are provided under a license agreement containing restrictions on use and disclosure and are also protected by copyright, patent, and other intellectual and industrial property laws. Reverse engineering, disassembly, or decompilation of the Programs, except to the extent required to obtain interoperability with other independently created software or as specified by law, is prohibited.

The information contained in this document is subject to change without notice. If you find any problems in the documentation, please report them to us in writing. This document is not warranted to be error-free. Except as may be expressly permitted in your license agreement for these Programs, no part of these Programs may be reproduced or transmitted in any form or by any means, electronic or mechanical, for any purpose.

If the Programs are delivered to the United States Government or anyone licensing or using the Programs on behalf of the United States Government, the following notice is applicable:

U.S. GOVERNMENT RIGHTS

Programs, software, databases, and related documentation and technical data delivered to U.S. Government customers are "commercial computer software" or "commercial technical data" pursuant to the applicable Federal Acquisition Regulation and agency-specific supplemental regulations. As such, use, duplication, disclosure, modification, and adaptation of the Programs, including documentation and technical data, shall be subject to the licensing restrictions set forth in the applicable Oracle license agreement, and, to the extent applicable, the additional rights set forth in FAR 52.227-19, Commercial Computer Software--Restricted Rights (June 1987). Oracle USA, Inc., 500 Oracle Parkway, Redwood City, CA 94065.

The Programs are not intended for use in any nuclear, aviation, mass transit, medical, or other inherently dangerous applications. It shall be the licensee's responsibility to take all appropriate fail-safe, backup, redundancy and other measures to ensure the safe use of such applications if the Programs are used for such purposes, and we disclaim liability for any damages caused by such use of the Programs.

The Programs may provide links to Web sites and access to content, products, and services from third parties. Oracle is not responsible for the availability of, or any content provided on, third-party Web sites. You bear all risks associated with the use of such content. If you choose to purchase any products or services from a third party, the relationship is directly between you and the third party. Oracle is not responsible for: (a) the quality of third-party products or services; or (b) fulfilling any of the terms of the agreement with the third party, including delivery of products or services and warranty obligations related to purchased products or services. Oracle is not responsible for any loss or damage of any sort that you may incur from dealing with any third party.

Oracle, JD Edwards, and PeopleSoft are registered trademarks of Oracle Corporation and/or its affiliates. Other names may be trademarks of their respective owners.

THIRD PARTY SOFTWARE NOTICES

This product includes software developed by Apache Software Foundation (<http://www.apache.org/>).

THIS SOFTWARE IS PROVIDED "AS IS" AND ANY EXPRESS OR IMPLIED WARRANTIES, INCLUDING, BUT NOT LIMITED TO, THE IMPLIED WARRANTIES OF MERCHANTABILITY AND FITNESS FOR A PARTICULAR PURPOSE ARE DISCLAIMED. IN NO EVENT SHALL THE AUTHOR OR CONTRIBUTORS BE LIABLE FOR ANY DIRECT, INDIRECT, INCIDENTAL, SPECIAL, EXEMPLARY, OR CONSEQUENTIAL DAMAGES (INCLUDING, BUT NOT LIMITED TO, PROCUREMENT OF SUBSTITUTE GOODS OR SERVICES; LOSS OF USE, DATA, OR PROFITS; OR BUSINESS INTERRUPTION) HOWEVER CAUSED AND ON ANY THEORY OF LIABILITY, WHETHER IN CONTRACT, STRICT LIABILITY, OR TORT (INCLUDING NEGLIGENCE OR OTHERWISE) ARISING IN ANY WAY OUT OF THE USE OF THIS SOFTWARE, EVEN IF ADVISED OF THE POSSIBILITY OF SUCH DAMAGE.

Copyright © 2000-2009 The Apache Software Foundation. All rights reserved.

This product includes software distributed via the Berkeley Software Distribution (BSD) and licensed for binary distribution under the Generic BSD license.

THIS SOFTWARE IS PROVIDED BY THE COPYRIGHT HOLDERS AND CONTRIBUTORS "AS IS" AND ANY EXPRESS OR IMPLIED WARRANTIES, INCLUDING, BUT NOT LIMITED TO, THE IMPLIED WARRANTIES OF MERCHANTABILITY AND FITNESS FOR A PARTICULAR PURPOSE ARE DISCLAIMED. IN NO EVENT SHALL THE COPYRIGHT OWNER OR CONTRIBUTORS BE LIABLE FOR ANY DIRECT, INDIRECT, INCIDENTAL, SPECIAL, EXEMPLARY, OR CONSEQUENTIAL DAMAGES (INCLUDING, BUT NOT LIMITED TO, PROCUREMENT OF SUBSTITUTE GOODS OR SERVICES; LOSS OF USE, DATA, OR PROFITS; OR BUSINESS INTERRUPTION) HOWEVER CAUSED AND ON ANY THEORY OF LIABILITY, WHETHER IN CONTRACT, STRICT LIABILITY, OR TORT (INCLUDING NEGLIGENCE OR OTHERWISE) ARISING IN ANY WAY OUT OF THE USE OF THIS SOFTWARE, EVEN IF ADVISED OF THE POSSIBILITY OF SUCH DAMAGE.

Copyright © 2009, Berkeley Software Distribution (BSD)

This product includes software developed by the JDOM Project (<http://www.jdom.org/>).

THIS SOFTWARE IS PROVIDED "AS IS" AND ANY EXPRESSED OR IMPLIED WARRANTIES, INCLUDING, BUT NOT LIMITED TO, THE IMPLIED WARRANTIES OF MERCHANTABILITY AND FITNESS FOR A PARTICULAR PURPOSE ARE DISCLAIMED. IN NO EVENT SHALL THE JDOM AUTHORS OR THE PROJECT CONTRIBUTORS BE LIABLE FOR ANY DIRECT, INDIRECT, INCIDENTAL, SPECIAL, EXEMPLARY, OR CONSEQUENTIAL DAMAGES (INCLUDING, BUT NOT LIMITED TO, PROCUREMENT OF SUBSTITUTE GOODS OR SERVICES; LOSS OF USE, DATA, OR PROFITS; OR BUSINESS INTERRUPTION) HOWEVER CAUSED AND ON ANY THEORY OF LIABILITY, WHETHER IN CONTRACT, STRICT LIABILITY, OR TORT (INCLUDING NEGLIGENCE OR OTHERWISE) ARISING IN ANY WAY OUT OF THE USE OF THIS SOFTWARE, EVEN IF ADVISED OF THE POSSIBILITY OF SUCH DAMAGE.

Copyright (C) 2000-2004 Jason Hunter & Brett McLaughlin. All rights reserved.

This product includes software developed by the Massachusetts Institute of Technology (MIT).

THE SOFTWARE IS PROVIDED "AS IS", WITHOUT WARRANTY OF ANY KIND, EXPRESS OR IMPLIED, INCLUDING BUT NOT LIMITED TO THE WARRANTIES OF MERCHANTABILITY, FITNESS FOR A PARTICULAR PURPOSE AND NONINFRINGEMENT. IN NO EVENT SHALL THE AUTHORS OR COPYRIGHT HOLDERS BE LIABLE FOR ANY CLAIM, DAMAGES OR OTHER LIABILITY, WHETHER IN AN ACTION OF CONTRACT, TORT OR OTHERWISE, ARISING FROM, OUT OF OR IN CONNECTION WITH THE SOFTWARE OR THE USE OR OTHER DEALINGS IN THE SOFTWARE.

Copyright © 2009 MIT

This product includes software developed by Jean-loup Gailly and Mark Adler. This software is provided 'as-is', without any express or implied warranty. In no event will the authors be held liable for any damages arising from the use of this software.

Copyright (c) 1995-2005 Jean-loup Gailly and Mark Adler

This software is based in part on the work of the Independent JPEG Group (<http://www.ijg.org/>).

This product includes software developed by the Dojo Foundation (<http://dojotoolkit.org>).

THIS SOFTWARE IS PROVIDED BY THE COPYRIGHT HOLDERS AND CONTRIBUTORS "AS IS" AND ANY EXPRESS OR IMPLIED WARRANTIES, INCLUDING, BUT NOT LIMITED TO, THE IMPLIED WARRANTIES OF MERCHANTABILITY AND FITNESS FOR A PARTICULAR PURPOSE ARE DISCLAIMED. IN NO EVENT SHALL THE COPYRIGHT OWNER OR CONTRIBUTORS BE LIABLE FOR ANY DIRECT, INDIRECT, INCIDENTAL, SPECIAL, EXEMPLARY, OR CONSEQUENTIAL DAMAGES (INCLUDING, BUT NOT LIMITED TO, PROCUREMENT OF SUBSTITUTE GOODS OR SERVICES; LOSS OF USE, DATA, OR PROFITS; OR BUSINESS INTERRUPTION) HOWEVER CAUSED AND ON ANY THEORY OF LIABILITY, WHETHER IN CONTRACT, STRICT LIABILITY, OR TORT (INCLUDING NEGLIGENCE OR OTHERWISE) ARISING IN ANY WAY OUT OF THE USE OF THIS SOFTWARE, EVEN IF ADVISED OF THE POSSIBILITY OF SUCH DAMAGE.

Copyright (c) 2005-2009, The Dojo Foundation. All rights reserved.

This product includes software developed by W3C.

Copyright © 2009 World Wide Web Consortium, (Massachusetts Institute of Technology, Institut National de Recherche en Informatique et en Automatique, Keio University). All Rights Reserved. (<http://www.w3.org/Consortium/Legal/>)

This product includes software developed by Mathew R. Miller (<http://www.bluecreststudios.com>).

Copyright (c) 1999-2002 ComputerSmarts. All rights reserved.

This product includes software developed by Shaun Wilde and distributed via Code Project Open License (<http://www.codeproject.com>).

THIS WORK IS PROVIDED "AS IS", "WHERE IS" AND "AS AVAILABLE", WITHOUT ANY EXPRESS OR IMPLIED WARRANTIES OR CONDITIONS OR GUARANTEES. YOU, THE USER, ASSUME ALL RISK IN ITS USE, INCLUDING COPYRIGHT INFRINGEMENT, PATENT INFRINGEMENT, SUITABILITY, ETC. AUTHOR EXPRESSLY DISCLAIMS ALL EXPRESS, IMPLIED OR STATUTORY WARRANTIES OR CONDITIONS, INCLUDING WITHOUT LIMITATION, WARRANTIES OR CONDITIONS OF MERCHANTABILITY, MERCHANTABLE QUALITY OR FITNESS FOR A PARTICULAR PURPOSE, OR ANY WARRANTY OF TITLE OR NON-INFRINGEMENT, OR THAT THE WORK (OR ANY PORTION THEREOF) IS CORRECT, USEFUL, BUG-FREE OR FREE OF VIRUSES. YOU MUST PASS THIS DISCLAIMER ON WHENEVER YOU DISTRIBUTE THE WORK OR DERIVATIVE WORKS.

This product includes software developed by Chris Maunder and distributed via Code Project Open License (<http://www.codeproject.com>).

THIS WORK IS PROVIDED "AS IS", "WHERE IS" AND "AS AVAILABLE", WITHOUT ANY EXPRESS OR IMPLIED WARRANTIES OR CONDITIONS OR GUARANTEES. YOU, THE USER, ASSUME ALL RISK IN ITS USE, INCLUDING COPYRIGHT INFRINGEMENT, PATENT INFRINGEMENT, SUITABILITY, ETC. AUTHOR EXPRESSLY DISCLAIMS ALL EXPRESS, IMPLIED OR STATUTORY WARRANTIES OR CONDITIONS, INCLUDING WITHOUT LIMITATION, WARRANTIES OR CONDITIONS OF MERCHANTABILITY, MERCHANTABLE QUALITY OR FITNESS FOR A PARTICULAR PURPOSE, OR ANY WARRANTY OF TITLE OR NON-INFRINGEMENT, OR THAT THE WORK (OR ANY PORTION THEREOF) IS CORRECT, USEFUL, BUG-FREE OR FREE OF VIRUSES. YOU MUST PASS THIS DISCLAIMER ON WHENEVER YOU DISTRIBUTE THE WORK OR DERIVATIVE WORKS.

This product includes software developed by PJ Arends and distributed via Code Project Open License (<http://www.codeproject.com>).

THIS WORK IS PROVIDED "AS IS", "WHERE IS" AND "AS AVAILABLE", WITHOUT ANY EXPRESS OR IMPLIED WARRANTIES OR CONDITIONS OR GUARANTEES. YOU, THE USER, ASSUME ALL RISK IN ITS USE, INCLUDING COPYRIGHT INFRINGEMENT, PATENT INFRINGEMENT, SUITABILITY, ETC. AUTHOR EXPRESSLY DISCLAIMS ALL EXPRESS, IMPLIED OR STATUTORY WARRANTIES OR CONDITIONS, INCLUDING WITHOUT LIMITATION, WARRANTIES OR CONDITIONS OF MERCHANTABILITY, MERCHANTABLE QUALITY OR FITNESS FOR A PARTICULAR PURPOSE, OR ANY WARRANTY OF TITLE OR NON-INFRINGEMENT, OR THAT THE WORK (OR ANY PORTION THEREOF) IS CORRECT, USEFUL, BUG-FREE OR FREE OF VIRUSES. YOU MUST PASS THIS DISCLAIMER ON WHENEVER YOU DISTRIBUTE THE WORK OR DERIVATIVE WORKS.

This product includes software developed by Erwin Tratar. This source code and all accompanying material is copyright (c) 1998-1999 Erwin Tratar. All rights reserved.

THIS SOFTWARE IS PROVIDED "AS IS" WITHOUT EXPRESS OR IMPLIED WARRANTY. USE IT AT YOUR OWN RISK! THE AUTHOR ACCEPTS NO LIABILITY FOR ANY DAMAGE/LOSS OF BUSINESS THAT THIS PRODUCT MAY CAUSE.

This product includes software developed by Sam Leffler of Silicon Graphics.

THE SOFTWARE IS PROVIDED "AS-IS" AND WITHOUT WARRANTY OF ANY KIND, EXPRESS, IMPLIED OR OTHERWISE, INCLUDING WITHOUT LIMITATION, ANY WARRANTY OF MERCHANTABILITY OR FITNESS FOR A PARTICULAR PURPOSE.

IN NO EVENT SHALL SAM LEFFLER OR SILICON GRAPHICS BE LIABLE FOR ANY SPECIAL, INCIDENTAL, INDIRECT OR CONSEQUENTIAL DAMAGES OF ANY KIND, OR ANY DAMAGES WHATSOEVER RESULTING FROM LOSS OF USE, DATA OR PROFITS, WHETHER OR NOT ADVISED OF THE POSSIBILITY OF DAMAGE, AND ON ANY THEORY OF LIABILITY, ARISING OUT OF OR IN CONNECTION WITH THE USE OR PERFORMANCE OF THIS SOFTWARE

Copyright (c) 1988-1997 Sam Leffler

Copyright (c) 1991-1997 Silicon Graphics, Inc.

This product includes software developed by Guy Eric Schalnat, Andreas Dilger, Glenn Randers-Pehrson (current maintainer), and others. (<http://www.libpng.org>)

The PNG Reference Library is supplied "AS IS". The Contributing Authors and Group 42, Inc. disclaim all warranties, expressed or implied, including, without limitation, the warranties of merchantability and of fitness for any purpose. The Contributing Authors and Group 42, Inc. assume no liability for direct, indirect, incidental, special, exemplary, or consequential damages, which may result from the use of the PNG Reference Library, even if advised of the possibility of such damage.

This product includes software components distributed by the Cryptix Foundation.

THIS SOFTWARE IS PROVIDED BY THE CRYPTIX FOUNDATION LIMITED AND CONTRIBUTORS "AS IS" AND ANY EXPRESS OR IMPLIED WARRANTIES, INCLUDING, BUT NOT LIMITED TO, THE IMPLIED WARRANTIES OF MERCHANTABILITY AND FITNESS FOR A PARTICULAR PURPOSE ARE DISCLAIMED. IN NO EVENT SHALL THE CRYPTIX FOUNDATION LIMITED OR CONTRIBUTORS BE LIABLE FOR ANY DIRECT, INDIRECT, INCIDENTAL, SPECIAL, EXEMPLARY, OR CONSEQUENTIAL DAMAGES (INCLUDING, BUT NOT LIMITED TO, PROCUREMENT OF SUBSTITUTE GOODS OR SERVICES; LOSS OF USE, DATA, OR PROFITS; OR BUSINESS INTERRUPTION) HOWEVER CAUSED AND ON ANY THEORY OF LIABILITY, WHETHER IN CONTRACT, STRICT LIABILITY, OR TORT (INCLUDING NEGLIGENCE OR OTHERWISE) ARISING IN ANY WAY OUT OF THE USE OF THIS SOFTWARE, EVEN IF ADVISED OF THE POSSIBILITY OF SUCH DAMAGE

Copyright © 1995-2005 The Cryptix Foundation Limited. All rights reserved.

This product includes software components distributed by Sun Microsystems.

This software is provided "AS IS," without a warranty of any kind. ALLEXPRESS OR IMPLIED CONDITIONS, REPRESENTATIONS AND WARRANTIES, INCLUDING ANY IMPLIED WARRANTY OF MERCHANTABILITY, FITNESS FOR A PARTICULAR PURPOSE OR NON-INFRINGEMENT, ARE HEREBY EXCLUDED. SUN AND ITS LICENSORS SHALL NOT BE LIABLE FOR ANY DAMAGES SUFFERED BY LICENSEE AS A RESULT OF USING, MODIFYING OR DISTRIBUTING THE SOFTWARE OR ITS DERIVATIVES. IN NO EVENT WILL SUN OR ITS LICENSORS BE LIABLE FOR ANY LOST REVENUE, PROFIT OR DATA, OR FOR DIRECT, INDIRECT, SPECIAL, CONSEQUENTIAL, INCIDENTAL OR PUNITIVE DAMAGES, HOWEVER CAUSED AND REGARDLESS OF THE THEORY OF LIABILITY, ARISING OUT OF THE USE OF OR INABILITY TO USE SOFTWARE, EVEN IF SUN HAS BEEN ADVISED OF THE POSSIBILITY OF SUCH DAMAGES.

Copyright (c) 1998 Sun Microsystems, Inc. All Rights Reserved.

This product includes software components distributed by Dennis M. Sosnoski.

THIS SOFTWARE IS PROVIDED BY THE COPYRIGHT HOLDERS AND CONTRIBUTORS "AS IS" AND ANY EXPRESS OR IMPLIED WARRANTIES, INCLUDING, BUT NOT LIMITED TO, THE IMPLIED WARRANTIES OF MERCHANTABILITY AND FITNESS FOR A PARTICULAR PURPOSE ARE DISCLAIMED. IN NO EVENT SHALL THE COPYRIGHT OWNER OR CONTRIBUTORS BE LIABLE FOR ANY DIRECT, INDIRECT, INCIDENTAL, SPECIAL, EXEMPLARY, OR CONSEQUENTIAL DAMAGES (INCLUDING, BUT NOT LIMITED TO, PROCUREMENT OF SUBSTITUTE GOODS OR SERVICES; LOSS OF USE, DATA, OR PROFITS; OR BUSINESS INTERRUPTION) HOWEVER CAUSED AND ON ANY THEORY OF LIABILITY, WHETHER IN CONTRACT, STRICT LIABILITY, OR TORT (INCLUDING NEGLIGENCE OR OTHERWISE) ARISING IN ANY WAY OUT OF THE USE OF THIS SOFTWARE, EVEN IF ADVISED OF THE POSSIBILITY OF SUCH DAMAGE.

Copyright © 2003-2007 Dennis M. Sosnoski. All Rights Reserved

It also includes materials licensed under Apache 1.1 and the following XPP3 license

THIS SOFTWARE IS PROVIDED "AS IS" AND ANY EXPRESSED OR IMPLIED WARRANTIES, INCLUDING, BUT NOT LIMITED TO, THE IMPLIED WARRANTIES OF MERCHANTABILITY AND FITNESS FOR A PARTICULAR PURPOSE ARE DISCLAIMED. IN NO EVENT SHALL THE COPYRIGHT OWNER OR CONTRIBUTORS BE LIABLE FOR ANY DIRECT, INDIRECT, INCIDENTAL, SPECIAL, EXEMPLARY, OR CONSEQUENTIAL DAMAGES (INCLUDING, BUT NOT LIMITED TO, PROCUREMENT OF SUBSTITUTE GOODS OR SERVICES; LOSS OF USE, DATA, OR PROFITS; OR BUSINESS INTERRUPTION) HOWEVER CAUSED AND ON ANY THEORY OF LIABILITY, WHETHER IN CONTRACT, STRICT LIABILITY, OR TORT (INCLUDING NEGLIGENCE OR OTHERWISE) ARISING IN ANY WAY OUT OF THE USE OF THIS SOFTWARE, EVEN IF ADVISED OF THE POSSIBILITY OF SUCH DAMAGE.

Copyright © 2002 Extreme! Lab, Indiana University. All Rights Reserved

This product includes software components distributed by CodeProject. This software contains material that is © 1994-2005 The Ultimate Toolbox, all rights reserved.

This product includes software components distributed by Geir Landro.

Copyright © 2001-2003 Geir Landro (drop@destroydrop.com) JavaScript Tree - [www.destroydrop.com/hjjavascripts/tree/version 0.96](http://www.destroydrop.com/hjjavascripts/tree/version0.96)

This product includes software components distributed by the Hypersonic SQL Group.

THIS SOFTWARE IS PROVIDED BY THE COPYRIGHT HOLDERS AND CONTRIBUTORS "AS IS" AND ANY EXPRESS OR IMPLIED WARRANTIES, INCLUDING, BUT NOT LIMITED TO, THE IMPLIED WARRANTIES OF MERCHANTABILITY AND FITNESS FOR A PARTICULAR PURPOSE ARE DISCLAIMED. IN NO EVENT SHALL THE COPYRIGHT OWNER OR CONTRIBUTORS BE LIABLE FOR ANY DIRECT, INDIRECT, INCIDENTAL, SPECIAL, EXEMPLARY, OR CONSEQUENTIAL DAMAGES (INCLUDING, BUT NOT LIMITED TO, PROCUREMENT OF SUBSTITUTE GOODS OR SERVICES; LOSS OF USE, DATA, OR PROFITS; OR BUSINESS INTERRUPTION) HOWEVER CAUSED AND ON ANY THEORY OF LIABILITY, WHETHER IN CONTRACT, STRICT LIABILITY, OR TORT (INCLUDING NEGLIGENCE OR OTHERWISE) ARISING IN ANY WAY OUT OF THE USE OF THIS SOFTWARE, EVEN IF ADVISED OF THE POSSIBILITY OF SUCH DAMAGE

Copyright © 1995-2000 by the Hypersonic SQL Group. All Rights Reserved

This product includes software components distributed by the International Business Machines Corporation and others.

THE SOFTWARE IS PROVIDED "AS IS", WITHOUT WARRANTY OF ANY KIND, EXPRESS OR IMPLIED, INCLUDING BUT NOT LIMITED TO THE WARRANTIES OF MERCHANTABILITY, FITNESS FOR A PARTICULAR PURPOSE AND NONINFRINGEMENT. IN NO EVENT SHALL THE AUTHORS OR COPYRIGHT HOLDERS BE LIABLE FOR ANY CLAIM, DAMAGES OR OTHER LIABILITY, WHETHER IN AN ACTION OF CONTRACT, TORT OR OTHERWISE, ARISING FROM, OUT OF OR IN CONNECTION WITH THE SOFTWARE OR THE USE OR OTHER DEALINGS IN THE SOFTWARE.

Copyright (c) 1995-2009 International Business Machines Corporation and others. All rights reserved.

This product includes software components distributed by the University of Coimbra.

University of Coimbra distributes this software in the hope that it will be useful but DISCLAIMS ALL WARRANTIES WITH REGARD TO IT, including all implied warranties of MERCHANTABILITY or FITNESS FOR A PARTICULAR PURPOSE. In no event shall University of Coimbra be liable for any special, indirect or consequential damages (or any damages whatsoever) resulting from loss of use, data or profits, whether in an action of contract, negligence or other tortious action, arising out of or in connection with the use or performance of this software.

Copyright (c) 2000 University of Coimbra, Portugal. All Rights Reserved.

This product includes software components distributed by Steve Souza.

THIS SOFTWARE IS PROVIDED BY THE AUTHOR AND CONTRIBUTORS "AS IS" AND ANY EXPRESS OR IMPLIED WARRANTIES, INCLUDING, BUT NOT LIMITED TO, THE IMPLIED WARRANTIES OF MERCHANTABILITY AND FITNESS FOR A PARTICULAR PURPOSE ARE DISCLAIMED. IN NO EVENT SHALL THE COPYRIGHT OWNER OR CONTRIBUTORS BE LIABLE FOR ANY DIRECT, INDIRECT, INCIDENTAL, SPECIAL, EXEMPLARY, OR CONSEQUENTIAL DAMAGES (INCLUDING, BUT NOT LIMITED TO, PROCUREMENT OF SUBSTITUTE GOODS OR SERVICES; LOSS OF USE, DATA, OR PROFITS; OR BUSINESS INTERRUPTION) HOWEVER CAUSED AND ON ANY THEORY OF LIABILITY, WHETHER IN CONTRACT, STRICT LIABILITY, OR TORT (INCLUDING NEGLIGENCE OR OTHERWISE) ARISING IN ANY WAY OUT OF THE USE OF THIS SOFTWARE, EVEN IF ADVISED OF THE POSSIBILITY OF SUCH DAMAGE.

Copyright © 2002, Steve Souza (admin@jamonapi.com). All Rights Reserved.

This product includes software developed by the OpenSymphony Group (<http://www.opensymphony.com/>.)"

Copyright © 2001-2004 The OpenSymphony Group. All Rights Reserved.

PANTONE (R) Colors displayed in the software application or in the user documentation may not match PANTONE-identified standards. Consult current PANTONE Color Publications for accurate color. PANTONE(R) and other Pantone LLC trademarks are the property of Pantone LLC. (C) Pantone LLC, 2011.

Pantone LLC is the copyright owner of color data and/or software which are licensed to Oracle to distribute for use only in combination with Oracle Documaker. PANTONE Color Data and/or Software shall not be copied onto another disk or into memory unless part of the execution of Oracle Documaker.

Contents

Chapter 1, Customizing iPPS

2	Adding an Agency/Config	
2	Business Scenario	
2	Solution 1	
8	Solution 2	
17	Agency/Sub Agency Profiling	
17	Business Scenario	
17	Solution	
20	Importing Agency and Sub Agency Data	
20	Business Scenario	
20	Solution	
22	Configuring MSMQ	
22	Business Scenario	
22	Solution	
23	Placing the User/Profile database onto an SQL Server	
23	Business Scenario	
23	Solution	
24	Restricting Access to Lines of Businesses	
24	Business Scenario	
24	Solution	
26	Adding Users to iPPS for Reports To Functionality	
26	Business Problem	
26	Solution	
29	Publishing Quote Forms in Real-time	
29	Business Scenario	
29	Solution	
30	Starting the Issue Process from a Rating Application	
30	Business Scenario	
30	Solution	
31	Verifying Policy Numbers	
31	Business Scenario	

31	Solution
32	Applying Document Naming Conventions
32	Business Scenario
32	Solution
34	Providing Default Distribution Options to Agencies
34	Business Scenario
34	Solution
37	Inserting State Stamps, Signatures, and Logos
37	Business Scenario
37	Solution
38	Importing Archive Data into a New Policy
38	Business Scenario
38	Solution

Example DFD Files and SQL Scripts

40	Example APPIDX.DFD File
46	Example ARCHIVE.DFD File
48	Example WIP.DFD File
53	Example WIPDATA.DFD File
55	Example APPIDX SQL Script
56	Example ARCHIVE SQL Script
57	Example CATALOG SQL Script
58	Example QA_MRL SQL Script
60	Example WIP SQL Script
61	Example WIP_Archive_Combined SQL Script
64	Example WIPDATA SQL Script
65	Example UserDB SQL Script

Chapter 1

Customizing iPPS

This document outlines ways you can customize iPPS to meet your unique business needs. You will find topics on...

- [Adding an Agency/Config on page 2](#)
- [Agency/Sub Agency Profiling on page 17](#)
- [Importing Agency and Sub Agency Data on page 20](#)
- [Configuring MSMQ on page 22](#)
- [Placing the User/Profile database onto an SQL Server on page 23](#)
- [Restricting Access to Lines of Businesses on page 24](#)
- [Adding Users to iPPS for Reports To Functionality on page 26](#)
- [Publishing Quote Forms in Real-time on page 29](#)
- [Starting the Issue Process from a Rating Application on page 30](#)
- [Verifying Policy Numbers on page 31](#)
- [Applying Document Naming Conventions on page 32](#)
- [Providing Default Distribution Options to Agencies on page 34](#)
- [Inserting State Stamps, Signatures, and Logos on page 37](#)
- [Importing Archive Data into a New Policy on page 38](#)

ADDING AN AGENCY/ CONFIG

Business Scenario

You need to add a Agency Number/Config to the DAP.INI file so IDS knows about the new configuration.

- If you are using xBase for WIP and Archive, see Solution 1 below.
- If you are using ODBC for WIP and Archive, see [Solution 2 on page 8](#).

Solution 1

Each config will have a master CONFIG.INI file and an agency-specific INI file for information specific to this agency. These examples include the WIP, archive, and userinfo paths. This example is based in part on the scenario discussed in [Agency/Sub Agency Profiling on page 17](#) and the sample master resource library (MRL).

NOTE: This solution assumes you are using xBase WIP and archives. Be sure to create the agency-specific folder along with a WIP and archive folder so the DBF files can be stored in these folders.

```
;**** These configs are for a new iPPS install ****
< Config:100AIC >
    INIFile      = .\mstres\Amergen\A_100\AIC_100.ini
    INIFile      = .\mstres\Amergen\AIC.INI
< Config:200AIC >
    INIFile      = .\mstres\Amergen\A_200\AIC_200.ini
    INIFile      = .\mstres\Amergen\AIC.INI _
< Configurations >
    Config       = 100AIC
    Config       = 200AIC
```

Create a new directory to hold the agency-specific INI file and also the location of the WIP and archive. Specify the paths in the agency-specific INI file to the new directory for WIP and archive, for example, create a folder named A_100 and then additional folders named WIP and Archive.

Here is an example AIC_100.INI file:

```
< ARCRET >
    APPIDX       = .\mstres\Amergen\A_100\arc\APPIDX
    ARCPATH      = .\mstres\Amergen\A_100\arc\
    CARFile      = ARCHIVE
    CARPath      = .\mstres\Amergen\A_100\arc\
    Catalog      = .\mstres\Amergen\A_100\arc\CATALOG
    TempIDX      = .\mstres\Amergen\A_100\arc\TEMP
< UserInfo >
    Path         = .\mstres\Amergen\A_100\
    File         = userinfo
< WIPData >
    Path         = .\mstres\Amergen\A_100\WIP\
    File         = .\mstres\Amergen\A_100\WIP\WIP
```

Here are the settings you would need for the WIP Edit plug-in:

```
;***** Plug-in Settings *****
```

```

< File2Dpw >
; If you need specific information for the wipedit.ini file,
; then point to one here

```

Here is an example AIC_100.INI file:

```

< ARCRET >
  APPIDX      = .\mstres\Amergen\A_200\arc\APPIDX
  ARCPATH     = .\mstres\Amergen\A_200\arc\
  CARFile     = ARCHIVE
  CARPath     = .\mstres\Amergen\A_200\arc\
  Catalog     = .\mstres\Amergen\A_200\arc\CATALOG
  TempIDX     = .\mstres\Amergen\A_200\arc\TEMP
< UserInfo >
  Path        = .\mstres\Amergen\A_200\
  File        = userinfo
< WIPData >
  Path        = .\mstres\Amergen\A_200\WIP\
  File        = .\mstres\Amergen\A_200\WIP\WIP

```

Here are the settings you would need for the WIP Edit plug-in:

```

;***** Plug-in Settings *****
< File2Dpw >
; If you need specific information for the wipedit.ini file,
; then point to one here

```

Here is an example of the rest of the path information that would be listed in the AIC.INI file.

```

< Archival >
  MODE        = AUTO
  ArchiveMem  = No
< ARCRET >
  AppIdxDfd   = .\mstres\Amergen\arc\AppIdx.Dfd
  ExactMatch  = No
  LBLimit     = 500
< CONFIG:AIC >
  BaseDef     =
  DALFile     =
  DefLib      = .\mstres\Amergen\DEFLIB\
  FntFile     = FONTS.FNT
  FontLib     = .\mstres\Amergen\DEFLIB\
  Form7x      =
  FormDef     = FORM.DAT
  FormFile    =
  FormLib     = .\mstres\Amergen\FORMS\
  HelpLib     = HELP\
  LogoFile    =
  LbyLib      = .\mstres\Amergen\deflib\
  TableLib    = .\mstres\Amergen\TABLE\
  TransTrigger = RECIP.DAT
  WIPPath     = .\mstres\Amergen\WIP\
  XRFFile     = PPS
< CONFIGURATIONS >
  CONFIG      = AIC
< MasterResource >
  BaseDef     = [CONFIG:AIC] BaseDef =

```

```
DALFile          = [CONFIG:AIC] DalFile =
DefLib           = [CONFIG:AIC] DefLib =
FntFile          = [CONFIG:AIC] FntFile =
FontLib          = [CONFIG:AIC] FontLib =
Form7x           = [CONFIG:AIC] Form7x =
FormDef          = [CONFIG:AIC] FormDef =
FormFile         = [CONFIG:AIC] FormFile =
FormLib          = [CONFIG:AIC] FormLib =
HelpLib          = [CONFIG:AIC] HelpLib =
LogoFile         = [CONFIG:AIC] LogoFile =
LbyLib           = [CONFIG:AIC] LbyLib =
TableLib         = [CONFIG:AIC] TableLib =
TransTrigger     = [CONFIG:AIC] TransTrigger =
XRFFile          = [CONFIG:AIC] XrfFile =
< Control >
  XrfExt          = .fxr
  ImageEXT        = .fap
  DateFormat      = 24%
  AutoInserts     = Yes
< Debug >
  DeleteFiles     = Yes
< Data >
  ArcNaFile       = .\mstrres\Amergen\data\nafile.dat
  ArcPolFile      = .\mstrres\Amergen\data\polfile.dat
  TrnDfdFile      = .\mstrres\Amergen\deflib\TrnDfdFl.Dfd
  ArcTrnDataFile  = .\mstrres\Amergen\data\newtrn.dat
< WIPData >
  Key1            = KEY1
  Key2            = KEY2
  KeyID           = KEYID
  DESC           = DESC
  TranCode        = TRANCODE
  StatusCode      = STATUSCODE
  GUIDKey         = GUIDKEY
  LocID           = LOCID
  SubLocID        = SUBLOCID
  Jurisdictn      = JURISDICTN
  TRNName         = TRNNAME
;Needed for Check Policy to work
< DocSetNames >
  GroupName1      = KEY1
  GroupName2      = KEY2
  GroupName3      = NULL
  FormName        = NULL
  TransactionID    = KEYID
  StatusCode      = STATUSCODE
  TranCode        = TRANCODE
  ArchiveKey       = ARCKEY
  ArchiveDate      = CREATETIME
< IPPValues >
  IPPEXportRecips = True
< STATUS_CD >
  Archive          = AR
  Assign           = A
  BatchPrint       = B
```

```

Combine          = CO
Duplicate        = DU
Printed          = P
Quote           = Q
Transmit         = T
WIP              = W
; Logo to be used when proofing a PDF in iPPS
< WatermarkLogo >
  Logo           = .\mstres\Amergen\deflib\Proof.LOG
  Top            = 4050
  Left           = 5075
  Pages          = all
  Color          = 0

```

Here are the settings you would need for the WIP Edit plug-in:

```

;***** Plug-in Settings *****
;Items needed to be sent to the plug-in during initialization
;the wipedit.ini has plug-in specific settings
< File2Dpw >
  XRFToken = .\mstres\Amergen\DEFLIB\PPS.fxr
  INIToken = .\mstres\Amergen\wipedit.ini
< WIP2DPW >
;  Debug = Yes
  Menu = wipedit.res
< WIPLock >
  MatchUserid = Ignore
  UnMatchUserid = Ignore
< INI2XML >
  PutURL      = 127.0.0.1:80
  UserID      = ~GetAttach USERID
  Password    = ~GetAttach PASSWORD
< PrtType:DPW >
  PrintFunc   = DPWPrint
  Module      = DPWW32
;  Debug      = Yes
  FormSetID   = ~GetAttach FORMSETID
  RECNUM      = ~GetAttach RECNUM
  KeyID       = ~GetAttach KEYID
; Specifics for each print type including file naming convention
< PrtType:PDF >
  FileName = ~KEYID ~TRANCODE _ ~DALRUN guid.dal _PDF.pdf
< PrtType:PCL >
  DownloadFonts = Yes,Enabled
  Module        = PCLOS2
  PrintFunc     = PCLPrint
  SendOverlays  = No,Enabled
  MultipleCopies = Yes
  TemplateFields = No
  AdjLeftMargin = Yes
  FileName = ~KEYID ~TRANCODE .pcl
< PrtType:XML >
  FileName = ~KEYID ~TRANCODE .xml
< PrtType:V2 >
  FileName = ~KEYID ~TRANCODE .v2
; Mapping from WIP Record to Archive record

```

```
< AfeWip2ArchiveRecord >
    KEY1          = KEY1
    KEY2          = KEY2
    KEYID         = KEYID
    RECTYPE       = RECTYPE
    CREATETIME    = MODIFYTIME,X
    ORIGUSER      = ORIGUSER
    CURRUSER      = CURRUSER
    MODIFYTIME    = MODIFYTIME,X
    FORMSETID     = FORMSETID
    TRANCODE      = TRANCODE
    STATUSCODE    = STATUSCODE
    FROMUSER      = FROMUSER
    FROMTIME      = FROMTIME
    TOUSER        = TOUSER
    TOTIME        = TOTIME
    DESC          = DESC
    INUSE         = INUSE
    ARCKEY        = ARCKEY
    APPDATA       = APPDATA
    RECNUM        = RECNUM
    TRNNAME       = TRNNAME
; Setup for complete print. This is to designate the Home Office
; PDF and auto export
< Complete >
    CompleteType = COMP1
    CompleteType = COMP2
< Complete:COMP1 >
    FileType = PDF
    FileName = ~KEYID ~TRANCODE.pdf
    FileExt = pdf
    FilePath = .\mstres\Amergen\complete\
    Recipient = HOME OFFICE
< Complete:COMP2 >
    FileType = XML
    FileName = ~KEYID ~TRANCODE.xml
    FileExt = xml
    FilePath = .\mstres\Amergen\complete\
    Recipient = ALLRECIPIENTS
```

Use the DSICOTB.exe in the docserv directory to test getting resources from Docupresentment. You can run the i_GetMRLResource request type to see if you can pull the company and lines of business. This will help you determine if your pathing is set up correctly.

NOTE: For more information on adding the agency number or returning the locationprofile.xml file, see [Agency/Sub Agency Profiling on page 17](#).

Follow these steps:

- 1** Copy a <CONFIG> node into the global.xml (not the SYSTEM config), or use the global_template.xml. Change the Name attribute to the new Agency/Config. Set the Library attribute to the description from the doGetLocationProfileXML for that agency. Remember these values because you will need to add them to the user database if profiling is needed.

- Add or remove the Distribution options from the <IROUTE> nodes as needed.

The removal of the <IROUTE> nodes prevents the agent from seeing possible distribution options such as XMLExport, V2, FieldsOnly, and so on. See the OW0006 agency as an example of removing these distribution options.

- Change the path to the Default Distribution Options XML for this agent.
- Modify the actual DefaultDistributionOptions.XML file with this agent's new defaults.

- 2** If the agency needs to have a subset of the company and line of business, add the Agency Number to the user database. See [Agency/Sub Agency Profiling on page 17](#) for more information.

- 3** Add new users to the USERINFO.DBF file for the new agency. See [Adding Users to iPPS for Reports To Functionality on page 26](#) for more information.

- 4** Make sure the location profile service provides a profile for the new agency. See [Agency/Sub Agency Profiling on page 17](#) for more information.

If you have not automated this step, modify the following file to make sure your new agency will get a profile returned:

```
c:\Inetpub\wwwroot\_iPPS312_SERVICES\locationprofile.asp
```

- 5** If needed, make sure the service for importing agency-specific data returns data for the new agency. See [Importing Agency and Sub Agency Data on page 20](#) for more information. If you have not automated this step, modify the following file to return the XML file with the data to import:

```
c:\Inetpub\wwwroot\_iPPS312_SERVICES\cusimportdata.asp
```

This data includes items that would be treated as default data.

- 6** Modify the Verify KeyId service to validate the policy numbers for the new agency. See [Verifying Policy Numbers on page 31](#) for more information. If you have not automated this step, modify the following file to add additional validation:

```
c:\Inetpub\wwwroot\_iPPS312_SERVICES\cusverifykeyid.asp
```

- 7** Make sure your WIP and archive folders have been created underneath your agency-specific folder.

Solution 2

Each configuration will have a master config.ini file and an agency-specific INI file for information specific to the agency, such as the WIP and archive tables, and the userinfo table.

NOTE: This solution assumes you are using ODBC for WIP and archives.

Here is an example DAP.INI file:

```
< Config:OW0006 >
    INIFile      = \OracleWorld\OW0006\OW0006.ini
    INIFile      = \OracleWorld\fsiuser.ini
    INIFile      = \OracleWorld\fsisys.ini
< Config:OWA321 >
    INIFile      = \OracleWorld\OWA321\OWA321.ini
    INIFile      = \OracleWorld\fsiuser.ini
    INIFile      = \OracleWorld\fsisys.ini_
< Configurations >
    Config       = OW0006
    Config       = OWA321
```

Create a new directory in c:\OracleWorld\ to hold the agency-specific INI file and userinfo database files (such as c:\OracleWorld\OW0006\). You will need to change the items of the existing agency to the new agency.

Here is an example OW0006.INI file:

```
< ODBC_FileConvert >
    WIP          = OW0006_WIP
    WIPData      = OW0006_WIPDATA
    APPIDX       = OW0006_APPIDX
    Archive      = OW0006_ARCHIVE
    Catalog      = OW0006_CATALOG
< UserInfo >
    Path         = \OracleWorld\OW0006\
    File         = userinfo
;*** Complete print for OW copies *****
< Complete >
    CompleteType = COMP1
    CompleteType = COMP2
< Complete:COMP1 >
    FileType     = PDF
    FileName     = ~KEYID ~TRANCODE __~LOCID ~DALRUN date.dal .PDF
    FileExt      = pdf
    FilePath     = \\FTPSERVER\C$\IPPS\OW0006
    Recipient    = COMPANY
    PersistOutput = Yes
< Complete:COMP2 >
    FileType     = XML
    FileName     = ~KEYID ~TRANCODE __~LOCID ~DALRUN date.dal .xml
    FileExt      = xml
    FilePath     = \\FTPSERVER\C$\IPPS\OW0006
    Recipient    = ALLRECIPIENTS
    PersistOutput = Yes
```

Here is an example OWA321.INI file:

```
< ODBC_FileConvert >
    WIP                = OWA321_WIP
    WIPData            = OWA321_WIPDATA
    APPIDX             = OWA321_APPIDX
    Archive            = OWA321_ARCHIVE
    Catalog            = OWA321_CATALOG
< UserInfo >
    Path               = \OracleWorld\OWA321\
    File               = userinfo
< Complete:COMP1 >
    FileType           = PDF
    FileName           = ~KEYID ~TRANCODE __~LOCID ~DALRUN date.dal .PDF
    FileExt            = pdf
    FilePath           = \\FTPSERVER\C$\IPPS\OWA321
    Recipient          = COMPANY
    PersistOutput      = Yes
< Complete:COMP2 >
    FileType           = XML
    FileName           = ~KEYID ~TRANCODE __~LOCID ~DALRUN date.dal .xml
    FileExt            = xml
    FilePath           = \\FTPSERVER\C$\IPPS\OWA321
    Recipient          = ALLRECIPIENTS
    PersistOutput      = Yes
```

The rest of the path information is listed in the FSIUSER.INI file. Here is an example FSIUSER.INI file:

```
< AFEWIP2ArchiveRecord >
    APPData            = APPDATA
    ARCKey             = ARCKEY
    CreateTime         = MODIFYTIME,X
    CurrUser           = CURRUSER
    Desc               = DESC
    FormSetID          = FORMSETID
    FromTime           = FROMTIME
    FromUser           = FROMUSER
    InUse              = INUSE
    Key1               = KEY1
    Key2               = KEY2
    KeyID              = KEYID
    ModifyTime         = MODIFYTIME,X
    OrigUser           = ORIGUSER
    RecNum             = RECNUM
    RecType            = RECTYPE
    StatusCode         = STATUSCODE
    ToTime             = TOTIME
    ToUser             = TOUSER
    TranCode           = TRANCODE
    TrnName            = TRNNAME
< Archival >
    ArchiveMem         = Yes
    Mode               = AUTO
< ARCRET >
    AppIdxDfd          = \OracleWorld\deflib\AppIdx.Dfd
    CarFileDFD         = \OracleWorld\deflib\Archive.Dfd
```

```

        APPIDX          = APPIDX
        CARFile          = ARCHIVE
        Catalog          = CATALOG
        TempIDX          = TEMP
        ExactMatch       = No
        LBLimit          = 500
    < DBTable:ARCHIVE >
        DBHandler        = CD9B9CDB
        UniqueTag        = ARCKEY
    < DBTable:APPIDX >
        DBHandler        = CD9B9CDB
        UniqueTag = ARCKEY
        DefaultTag       = CREATETIME
    < DBTable:CATALOG >
        DBHandler        = CD9B9CDB
    < Config:OW >
        ArcPath           = \OracleWorld\Arc\
        BaseDef            = OW
        BDFFile           = OW_QA
        BDFLib            = \OracleWorld\BDFLib\
        CARPath           = \OracleWorld\Arc\
        DALFile           = OW_QA
        DDTFile           = OW_QA
        DEFLib            = \OracleWorld\DEFLIB\
        DictionaryFile    = XDB.DBF
        EDLLib            = \OracleWorld\EDLLib\
        FieldBaseFile     = FDB.DBF
        FNTFile           = fonts
        FontLib           = \OracleWorld\DEFLIB\
        FORFile           = OW_QA
        FORLib            = \OracleWorld\FORLib\
        FormDef           = FORM.DAT
        FormFile          = OW_QA
        FormLib           = \OracleWorld\FORMS\
        FormsetTrigger    = SETRCPTB.INI
        GRPFile           = OW_QA
        GRPLib            = \OracleWorld\GRPLib\
        HelpLib           = \OracleWorld\HELP\
        LBYPFile          = \OracleWorld\DEFLIB\
        LogoFile          = OW_QA
        LogoLib           = \OracleWorld\FORMS\
        TableLib          = \OracleWorld\TABLE\
    ; WIPPath             = \OracleWorld\WIP\
        XDDFile           = OW_QA
        XRFFile           = fmgenos2
    < Configurations >
        Config            = OW
    < Control >
        AutoInserts       = Yes
        DateFormat        = 24%
        ImageEXT          = .fap
        XRFExt            = .fxr
    < Data >
        AfgJobFile        =
        ArcNaFile         = \OracleWorld\data\nafile.dat

```

```

        ArcPolFile           = \OracleWorld\data\polfile.dat
        ArcTrnDataFile       = \OracleWorld\data\newtrn.dat
        DataPath             = .\DATA\
        SetRcpTb             =
        TranslationFile       = Translat.ini
        TrnDfdFile           = \OracleWorld\deflib\TrnDfdFl.Dfd
< DBHandler:CD62B30F >
    Class                   = CB5
    File                    = \OracleWorld\DEFLIB\MASTER.LBY
< DBHandler:CD9B9CDB >
    Class                   = ODBC
    CreateIndex             = No
    CreateTable             = No
    Debug                   = Yes
    PassWd                  = 001600
    Server                  = DocumakerDB
    UserID                  = sa
< DBHandler:ODBC_PROD >
    Class                   = ODBC
    CreateIndex             = No
    CreateTable             = No
    Debug                   = No
    PassWd                  = 001600
    Server                  = DocumakerDB_PROD
    UserID                  = sa
< DBTable:OW_QA >
    DBHandler               = CD9B9CDB
< DBTable:OW_QAC >
    DBHandler               = CD9B9CDB
    UniqueTag               = CATALOGID
< DBTable:OW_QAD >
    DBHandler               = CD9B9CDB
    UniqueTag               = ARCKEY+SEQ_NUM
< DBTable:OW_QAL >
    DBHandler               = CD9B9CDB
    UniqueTag               = DATE+TIME
< DBTable:OW_PROD >
    DBHandler               = ODBC_PROD
< DBTable:OW_PRODC >
    DBHandler               = ODBC_PROD
    UniqueTag               = CATALOGID
< DBTable:OW_PRODD >
    DBHandler               = ODBC_PROD
    UniqueTag               = ARCKEY+SEQ_NUM
< DBTable:OW_PRODL >
    DBHandler               = ODBC_PROD
    UniqueTag               = DATE+TIME
< DBTable:OW_DEV >
    DBHandler               = CD62B30F
< Debug >
    DeleteFiles             = No
< DocSetNames >
    ArchiveDate              = CREATETIME
    ArchiveKey               = ARCKEY
    FormName                 = NULL

```

```

        GroupName1      = KEY1
        GroupName2      = KEY2
        GroupName3      = NULL
        StatusCode       = STATUSCODE
        TranCode         = TRANCODE
        TransactionID    = KEYID
    < Environment >
        DO_LOGON         = Yes
        FSISYSINI        = FSISYS.INI
    < ExportFields >
        End              = END OF FIELD
        Field            = AGYAD1
        Field            = AGYAD2
        Field            = AGYCTY
        Field            = AGYNAM
        Field            = AGYST
        Field            = AGYZIP
        Field            = FEEDESC1
        Field            = CSIGNEDLOC
        SingleLine       = no
        Start            = START OF FIELD
    < ExportFormats >
        01               = ;TD;Standard Export;TRNW32->TRNExportV2;
        02               = ;FX;Field-only Export;TRNW32->TRNExportFields;
    < FixOptions >
        UseXDBRule       = Yes
    < Library:OW_DEV >
        DBTable          = OW_DEV
    < Library:OW_QA >
        Catalog          = OW_QAC
        DBTable          = OW_QAD
        LBYLogFile       = OW_QAL
    < Library:OW_PROD >
        Catalog          = OW_PRODC
        DBTable          = OW_PRODD
        LBYLogFile       = OW_PRODL
    < LibraryManager >
        Class            = GA;Georgia resource
        Class            = TX;Texas resource
        Class            = MD;Maryland resource
        Library          = OW_DEV
        Library          = OW_QA
        Project          = P001;Project 001
        Project          = P002;Project 002
        Project          = P003;Project 003
    < MasterResource >
        BaseDef          = <CONFIG:OW> BaseDef =
        BDFFile          = <CONFIG:OW> BDFFile =
        BDFLib           = <CONFIG:OW> BDFLib =
        CompLib          = <CONFIG:OW> CompLib =
        DalFile          = <CONFIG:OW> DalFile =
        DDTFile          = <CONFIG:OW> DDTFile =
        DDTLib           = <CONFIG:OW> DDTLib =
        DefLib           = <CONFIG:OW> DefLib =
        DictionaryFile   = <CONFIG:OW> DictionaryFile =

```

```

EDLLib          = <CONFIG:OW> EDLLib =
FieldBaseFile   = <CONFIG:OW> FieldBaseFile =
FntFile         = <CONFIG:OW> FntFile =
FontLib        = <CONFIG:OW> FontLib =
FORFile        = <CONFIG:OW> FORFile =
FORLib         = <CONFIG:OW> FORLib =
Form7x         = <CONFIG:OW> Form7x =
FormDef        = <CONFIG:OW> FormDef =
FormFile       = <CONFIG:OW> FormFile =
FormLib        = <CONFIG:OW> FormLib =
FormSetTrigger = <CONFIG:OW> FormsetTrigger =
GRPFile        = <CONFIG:OW> GRPFile =
GRPLib        = <CONFIG:OW> GRPLib =
HelpLib        = <CONFIG:OW> HelpLib =
LbyLib         = <CONFIG:OW> LbyLib =
LogoFile       = <CONFIG:OW> LogoFile =
LogoLib        = <CONFIG:OW> LogoLib =
TableLib       = <CONFIG:OW> TableLib =
TablePath      = <MASTERRESOURCE> TableLib =
TransTrigger   = [CONFIG:AIC] TransTrigger =
XDDFile        = <CONFIG:OW> XDDFile =
XRFFile        = <CONFIG:OW> XrfFile =
< ODBC_FileConvert >
  OW_QA         = OW_QA
  OW_QAC        = OW_QAC
  OW_QAD        = OW_QAD
  OW_QAL        = OW_QAL
  OW_PROD       = OW_PROD
  OW_PRODC      = OW_PRODC
  OW_PRODD      = OW_PRODD
  OW_PRODL      = OW_PRODL
< RunMode >
  CompiledFAP   = No
< SignOn >
  UserID        = FORMAKER
< Status_CD >
  Archive       = AR
  Assign        = A
  BatchPrint    = B
  Combine       = CO
  Duplicate     = DU
  Printed       = P
  Quote        = Q
  Transmit      = T
  WIP           = W
< TABLES >
  Path          = [MASTERRESOURCE] TABLELIB=

;***** WIP Edit plug-in settings *****
;Items to be sent to the WIP Edit plug-in during initialization
;the WIPEDIT.INI file has plug-in specific settings
< File2Dpw >
  XRFToken      = \OracleWorld\DEFLIB\fmgenos2.fxr
  INIToken      = \OracleWorld\wipedit.ini
< WIP2dpw >

```

```
;   Debug = Yes
    Menu = \OracleWorld\wipedit.res
< WIPLock >
    MatchUserID   = Ignore
    UnMatchUserID = Ignore
< INI2XML >
    PutURL        = 127.0.0.1:80
    HTTPUserID    = ipps
    HTTPPassword  = ipps
< PrtType:DPW >
    PrintFunc     = DPWPrint
    Module        = DPWW32
    Debug         = Yes
    formSetID     = ~GetAttach FORMSETID
    RecNum        = ~GetAttach RECNUM
    KeyID         = ~GetAttach KEYID
< IPPValues >
    IPPEXportRecips = True

;***iPPS Print type settings ****
< PrtType:FIELDSONLY >
    FileName      = ~KEYID ~TRANCODE .fld
< PrtType:PCL >
    AdjLeftMargin = Yes
    DownloadFonts = Yes,Enabled
    FileName      = ~KEYID ~TRANCODE .pcl
    Module        = PCLOS2
    MultipleCopies = Yes
    PrintFunc     = PCLPrint
    SendOverlays  = No,Enabled
    TemplateFields = No
< PrtType:PDF >
    FileName      = ~KEYID ~TRANCODE _ ~DALRUN guid.dal .pdf
< PrtType:V2 >
    FileName      = ~KEYID ~TRANCODE .v2
< PrtType:XML >
    FileName      = ~KEYID ~TRANCODE .xml
< WatermarkLogo >
    Color         = 0
    Left          = 5075
    Logo          = \OracleWorld\deflib\Proof.LOG
    Pages         = all
    Top           = 4050
< DBTable:WIP >
    DBHandler     = CD9B9CDB
    UniqueTag     = DocTag
< DBTable:WIPData >
    DBHandler     = CD9B9CDB
    UniqueTag     = FormSetID
< WIPData >
    Desc          = DESC
    File          = WIP
    GUIDKey       = GUIDKEY
    Jurisdictn    = JURISDICTN
    Key1          = KEY1
```



```

Key2           = KEY2
KeyID          = KEYID
LocID         = LOCID
StatusCode    = STATUSCODE
SubLocID      = SUBLOCID
TranCode      = TRANCODE
TrnName       = TRNNAME
RecNum        = UNIQUE_ID
DatabaseWIP   = Yes
WIPDataDFD    = \OracleWorld\deflib\wipdata.dfd
WIPDFDFile    = \OracleWorld\deflib\wip.dfd
Path          = \OracleWorld\WIP\
< LSS_Inserts >
LSS_Signature  = LSS_SIGNATURE_{%LOCID}

```

Follow these steps:

- 1** Copy a <CONFIG> node into the global.xml (not the SYSTEM config), or use the global_template.xml. Change the Name attribute to the new Agency/Config. Set the Library attribute to the description from the doGetLocationProfileXML for that agency. Remember these values because you will need to add them to the user database if profiling is needed.
 - Add or remove the Distribution options from the <IROUTE> nodes as needed.

The removal of the <IROUTE> nodes prevents the agent from seeing possible distribution options such as XMLExport, V2, FieldsOnly, and so on. See the OW0006 agency as an example of removing these distribution options.
 - Change the path to the Default Distribution Options XML for this agent.
 - Modify the actual DefaultDistributionOptions.XML file with this agent's new defaults.
- 2** If the agency needs to have a subset of the company and line of business, add the Agency Number to the user database. See [Agency/Sub Agency Profiling on page 17](#) for more information.
- 3** Add new users to the USERINFO.DBF file for the new agency. See [Adding Users to iPPS for Reports To Functionality on page 26](#) for more information.
- 4** Make sure the location profile service provides a profile for the new agency. See [Agency/Sub Agency Profiling on page 17](#) for more information.

If you have not automated this step, modify the following file to make sure your new agency will get a profile returned:

```
c:\Inetpub\wwwroot\_iPPS312_SERVICES\locationprofile.asp
```

- 5** If needed, make sure the service for importing agency-specific data returns data for the new agency. See [Importing Agency and Sub Agency Data on page 20](#) for more information. If you have not automated this step, modify the following file to return the XML file with the data to import:

```
c:\Inetpub\wwwroot\_iPPS312_SERVICES\cusimportdata.asp
```

This data includes items that would be treated as default data.

- 6** Modify the Verify KeyId service to validate the policy numbers for the new agency. See [Verifying Policy Numbers on page 31](#) for more information. If you have not automated this step, modify the following file to add additional validation:

```
c:\Inetpub\wwwroot\_iPPS312_SERVICES\cusverifykeyid.asp
```

- 7** Create the WIP and ARCHIVE tables in the SQLServer. Modify the WIP_Archive_Combined.SQL script to reflect the agency you are trying to add. Then run this script in the SQLServer Management Studio for the environment you are updating.

NOTE: See [Example WIP_Archive_Combined SQL Script on page 61](#) for an example of this script.

AGENCY/SUB AGENCY PROFILING

Business Scenario

You would like to define which agencies a user has access to. Each agency needs to be profiled for its valid sub agencies. In addition, each agency needs to be profiled so only valid states are available for selection by the agent.

Solution

The users and agencies you write for are typically maintained in the carriers's system, possibly in a database used to service the agent portal. iPPS is set up to use this information obtained via a REST service formatted according Schema. To use this functionality, a few setup requirements are required:

- You must add an entry to the global.xml file at the SYSTEM config level to tell the system where the URL is located for the profiling service. Here is an example:

```
<DOGETLOCATIONPROFILEURL>http://client.oracle.com/iPPS_Services/
locationprofile.asp</ DOGETLOCATIONPROFILEURL>
```

- This URL is the service provider for a doGetLocationProfileXML which tells the system which Agency Number and Description, Agency Sub Number and Description, and Tax State value and description are available.

Here is an example:

```
<doGetLocationProfileResponse xmlns:xsi="http://www.w3.org/2001/
XMLSchema-instance"
xsi:noNamespaceSchemaLocation="doGetLocationProfileResponse.xsd"
schemaVersion="1.0">
  <LocId id="100AIC" desc="Oracle Underwriters (100)"
mainlocationid="100">
    <SubLocId id="0" desc="Oracle Underwriters - Contract"/>
    <SubLocId id="1" desc="Oracle Underwriters - Brokerage"/>
    <SubLocId id="2" desc="Oracle Underwriters - Brokerage,
Orlando">
      <Jurisdiction id="AL" desc="Alabama"/>
      <Jurisdiction id="AR" desc="Arkansas"/>
    </SubLocId>
    <Jurisdiction id="AL" desc="Alabama"/>
    <Jurisdiction id="AR" desc="Arkansas"/>
    <Jurisdiction id="FL" desc="Florida"/>
  </LocId>
  <LocId id="200OIC" desc="Oracle Insurance House (200)"
mainlocationid="200">
    <SubLocId id="0" desc="Oracle Insurance House - Contract"/>
    <SubLocId id="1" desc="Oracle Insurance House - Program"/>
    <Jurisdiction id="DE" desc="Deleware"/>
    <Jurisdiction id="OH" desc="Ohio"/>
  </LocId>
</doGetLocationProfileResponse>
```

Here is another example:

```
<doGetLocationProfileResponse
xsi:noNamespaceSchemaLocation="doGetLocationProfileResponse.xsd"
schemaVersion="1.0"
xmlns:xsi="http://www.w3.org/2001/XMLSchema-instance">
  <LocId id="100AIC" desc=" Oracle Underwriters (100)">
    <SubLocId id="0" desc=" Oracle Underwriters - Contract"/>
```

```
<SubLocId id="1" desc=" Oracle Underwriters - Brokerage"/>
<Jurisdiction id="AL" desc="Alabama"></Jurisdiction>
</LocId>
<LocId id="200AIC" desc=" Oracle Insurance House (200)">
  <SubLocId id="0" desc="Oracle Insurance House - Contract"/>
  <SubLocId id="1" desc="Oracle Insurance House - Program"/>
  <Jurisdiction id="KY" desc="Kentucky"></Jurisdiction>
</LocId>
<LocId id="300AIC" desc="Oracle Insurance Brokers (AIC)"
mainlocationid="300">
  <SubLocId id="0" desc=" Oracle Insurance Brokers - Contract"/>
  <SubLocId id="1" desc=" Oracle Insurance Brokers -
Brokerage"/>
  <Jurisdiction id="MS" desc="Mississippi"></Jurisdiction>
  <Jurisdiction id="TN" desc="Tennessee"></Jurisdiction>
</LocId>
<LocId id="300OIC" desc=" Oracle Insurance Brokers (OIC)"
mainlocationid="300">
  <SubLocId id="0" desc=" Oracle Insurance Brokers - Contract"/>
  <SubLocId id="2" desc=" Oracle Insurance Brokers -
Program"/>
  <Jurisdiction id="AZ" desc="Arizona"></Jurisdiction>
  <Jurisdiction id="NC" desc="North Carolina"></Jurisdiction>
  <Jurisdiction id="VA" desc="Virginia"></Jurisdiction>
</LocId>
</doGetLocationProfileResponse>
```

The second example differs from the first example in that an optional `mainlocationid` attribute is included on the location (`<LocId>`).

In this example, agency 300 writes business for Amergen Insurance (AIC) and Oracle Insurance (OIC). There is an additional differentiating factor in that the states that are permissible differ for each of these companies.

To profile different states per company, you will need to list them as separate locations (`<LocId>`). In this example, location ID 300AIC represents the agency/config for the Amergen Company.

You will also notice that this particular agency/config for Amergen Insurance is limited to Mississippi and Tennessee. The location if 300AIC represents the agency/config for the Oracle company. It also has state limitations to Arizona, North Carolina, and Virginia. You have to list these as separate location IDs so you can restrict the states for each company.

These locations have the `mainlocationid` attribute set to 300 so that you can group/correlate all premiums written back to this main location. The value stored in the `mainlocationid` attribute will be the value stored in the WIP index and will populate on the forms in the package for this agency number.

The system will use this information and present it to the user. When the user accesses the system, the system provides a selection of libraries from which the user can choose. The listing is comprised of each `<LocId id=""/>` in the `doGetLocationProfileXML`.

In the examples above, the user will be presented with Oracle Underwriters (100) and Oracle Insurance House (200) as choices in the first example. In the second example, the user will be presented with Oracle Underwriters (100), Oracle Insurance House (200), Oracle Insurance Brokers (AIC), and Oracle Insurance Brokers (OIC).

Each location (<LocId>) has access to all jurisdictions (<Jurisdiction>) listed as its children. Any jurisdiction list underneath the sub agency (<SubLocId>) is a restriction of that jurisdiction. In other words, the user will not have access to that jurisdiction listed as a choice.

The purpose of the jurisdiction listing is to control which states are available to the user. The jurisdiction listing populates two fields on the Company/Line of Business Selection window. The jurisdiction field, Tax State, is populated from this listing and is used to provide data for placing the appropriate state stamp on the form.

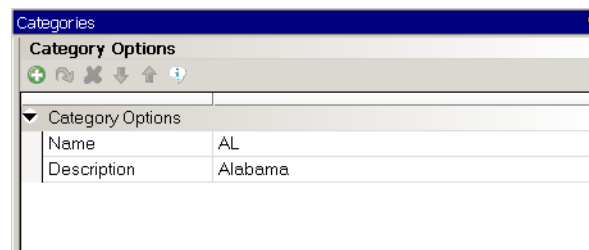
The other field, Category, is used as a forms list filter. The user can choose the company, line of business, and state, which will narrow the list of forms on the Forms Selection window. If a state category is not chosen, then no forms from that state will appear in the forms list.

To use this filter functionality, you must set up categories in the FORM.DAT file. Here is an example:

```
;Amergen;GENERAL LIABILITY;CG0108 11-1985;Alabama
Changes| |CATEGORY=AL| | ;NM; ;cg0108|A<ORIGINAL (1) , RETAIL
AGENT (1) , GENERAL AGENT (0) , EXTRA COPY (0) , HOME OFFICE (0) >;
```

Setting up categories in Studio

In Documaker Studio, open the Application Definition (BDF) file and click on the Categories tab. Use this window to define a name and description for each of the categories you need.



In this example, create a state category for each state you need, then drag the state-specific forms into those categories on the forms list.

IMPORTING AGENCY AND SUB AGENCY DATA

Business Scenario

You would like to import data onto policies specific to the agency, sub agency, or common for all agencies. Examples of this type of data include agency addresses, sub agency addresses, operator initials, counter-signed location, and so on.

Typically, this data is stored in the carrier's system. The issue is how to get this information out of the system without having to duplicate where this information is stored.

Solution

iPPS can use a URL-based service to import any global data into the system. iPPS will make a call to a particular URL defined in the global.xml file at the SYSTEM config level. Here is an example:

```
<DOIMPORTDATAURL>http://client.oracle.com/iPPS_Services/  
cusimportdata.asp</DOIMPORTDATAURL>
```

When populating the response XML, remember the NAME attribute of the FIELD element *must* match the field name on the form or FAP file. Global data is only accepted at this time. The endpoint URL can expect to find the following data in the post:

Data	Description
authuser	The value for the current user.
key1	The value for the company.
key2	The value for the Line of Business.
keyid	The value for the policy number.
trancode	The value for the transaction code.
config	The value of the current configuration.
locid	The value for the agency code.
sublocid	The value for the agency sub code.
jurisdiction	The value for the tax state.

This represents a sample response from the service:

```
<?xml version="1.0" encoding="UTF-8"?>  
<DOCUMENT>  
  <DOCSET>  
    <FIELD NAME="AGENCY NAME">Oracle Insurance Company</FIELD>  
    <FIELD NAME="AGENCY ADDRESS 1">415 Main Street</FIELD>  
    <FIELD NAME="AGENCY ADDRESS 2">Suite 200</FIELD>  
    <FIELD NAME="AGENCY ADDRESS 3">Atlanta, GA 333330</FIELD>  
    <FIELD NAME="COMPANY NAME">Amergen Insurance Agency</FIELD>  
    <FIELD NAME="AGENT PHONE NBR #001">229-410-4100</FIELD>  
    <FIELD NAME="AGENT PHONE NBR #002">230-410-4100</FIELD>  
    <FIELD NAME="COUNTERSIGNED">Atlanta, GA</FIELD>
```

```
<FIELD NAME="OPINITIALS">JS</FIELD>  
</DOCSET>  
</DOCUMENT>
```

CONFIGURING MSMQ

Business Scenario

You need to configure the system to use Microsoft Message Queue.

Solution

Refer to the Using WebSphere MQ topic in Chapter 2 of the [Internet Document Server Guide](#) for detailed instructions on using Microsoft Message Queue (MSMQ).

PLACING THE USER/PROFILE DATABASE ONTO AN SQL SERVER

Business Scenario

You need to put the User/Profile database onto an SQL Server.

Solution

First create the User/Profile tables in the ODBC compliant database. Refer to the [Example UserDB SQL Script on page 65](#) for an example of how to create the tables

Once you have created the tables, modify the global.xml file to point to the new tables. Then add connection information to iUserDB to point to SQL:

```
<TABLE NAME="iUserDB">

<!--<DSN USERID="" PASSWORD="" CLASS="">driver={Microsoft Access
Driver
(*.mdb)};dbq=c:\inetpub\wwwroot\_iPPS312\user\USER.mdb;uid=Admin</
DSN>-->

<DSN USERID="" PASSWORD=""
CLASS="">DSN=SQLDB_DEV;Uid=sa;Pwd=sqlexpress;</DSN>

</TABLE>
```

RESTRICTING ACCESS TO LINES OF BUSINESSES

Business Scenario

You would like to restrict a line of business (or program) from certain agencies. Since you now have one FORM.DAT file, agency profiling becomes important in iPPS. You may want to deploy a specialty program to certain agencies and restrict other agencies from being able to choose that line of business.

Solution

If the agency needs to have a subset of the company and line of business offerings, then you need to add the agency number to the user database.

- Set the user ID in the master table to be equal to the Config/Agency added to the GLOBAL.XML file. Here is an example:

```
<CONFIG NAME="100AIC" LIBRARY="Oracle Underwriters (100)">
```

User_key, ID, office_ID, and location_ID are required fields.

- Assign an office_ID in the master table that correlates to the office_ID in the lib_config table.

	user_key	id	name	password	e_mail	security	office_id	location_id	transactions
▶		26	100AIC				1	1	0
		27	200AIC				2	2	
*	(AutoNumber)						0	0	0
Record: 1 of 2									

- Assign a profile_id to the office_id in the lib_config table. Also enter the library and config values as they appear the global.xml for the LIBRARY and NAME attributes on the <CONFIG> node respectively. Here is an example:

```
<CONFIG NAME="100AIC" LIBRARY="Oracle Underwriters (100)">
```

- Set the profile_type to E or I in lib_config table.

Enter To give the agency access to

E	All company and line of business defined in the form.dat file except for the ones listed in the profile table for that profile_id.
I	Only the company and line of business listed in the profile table for that profile_id.

	office_id	profile_id	library	config	profile_type
▶	1	1	Southern Underwriters	100AIC	E
	2	2	Eastern Insurance House	200AIC	E
*	0	0			
Record: 1 of 2					

- Set the Group1 (Company) and Group2 (Line of Business) as defined in the form.dat file according to the profile_type specified.



	profile_id	group1	group2
▶	1	Amergen	CRIME
	1	Amergen	QUOTE
	2	Amergen	QUOTE
*	0		

Record: 1 of

ADDING USERS TO IPPS FOR REPORTS TO FUNCTIONALITY

Business Problem

You would like to add users to the agency's user database, or you would like for your agency administrator to be able to add users.

Solution

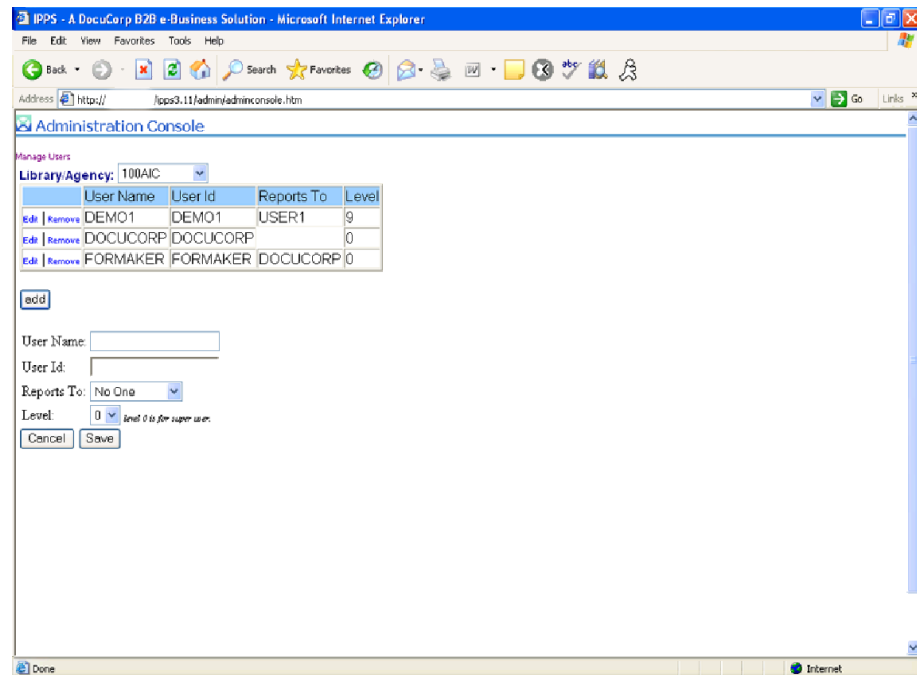
There are two approaches you can take:

iPPS has an admin console for adding users per Agency/Config. To access this console, go to a URL similar to this one:

```
http://myserver/iPPS311/admin/adminconsole.htm
```

Replace the *myserver* with the name of the server or IP address of the site hosting iPPS.

This simple access will allow for either the carrier or agency administrator to add, remove, and modify users in the userinfo database. iPPS will use the reports to structure the setup here when showing a user's WIP list.



A second approach to adding, removing, modifying users is to use the RESTful services to perform the listed actions. This approach is helpful if you are already managing the MGA users at your agent portal. If this is the case, you can add the Reports To and Level parameters to your user management screen.

Whenever the logic on the portal site is used to add new users to their system, these RESTful requests can be run at the same time to place these new users into iPPS.

Adding users

Parameter	Description
LibraryId	The Agency/Config configured for the userinfo database.
UserId	The user ID you want to add.
Username	The name of the user being added.
Level	The user security level is a number between zero (0) and 9. Zero (0) is for superusers.
Reportsto	The user ID to whom this new user will report.
Action	“add”

Use this URL:

`http://yourserver/iPPS311/doModifyUser.asp`

Here is an example:

`http://[yourserver]/iPPS311/
doModifyUser.asp?LibraryId=100AIC&UserId=DEMO1&username=DEMO1&level
=1&Reportsto=ORACLE&action=add`

Deleting users

Parameter	Description:
LibraryId	The Agency/Config configured for the userinfo database.
UserId	The user ID you want to delete.
Action	“delete”

Use this URL:

`http://yourserver/iPPS311/doModifyUser.asp`

Here is an example

`http://[yourserver]/iPPS311/
doModifyUser.asp?LibraryId=100AIC&UserId=DEMO1&action=delete`

Updating users

Parameter	Description
LibraryId	The Agency/Config configured for the userinfo database.
UserId	The user ID you want to update.
Username	The user name to be updated.
Level	The user security level is a number between zero (0) and 9. Zero (0) is for superusers.
Reportsto	The user ID to whom this user will report.
Action	“update”

Use this URL

```
http://yourserver/iPPS311/doModifyUser.asp
```

Here is an example:

```
http://[yourserver]/iPPS311/  
doModifyUser.asp?LibraryId=100AIC&UserId=DEMO1&username=DEMO1&level  
=1&Reportsto=USER1&action=add
```

NOTE: The USERID value *cannot* be updated with this method. USERID is the unique identifier for the user. If you need to modify the USERID value, please delete the user first and re-add that person.

PUBLISHING QUOTE FORMS IN REAL-TIME

Business Scenario

You want to use Oracle Insurance to produce a quote form from your rating application. Some carriers may host an online rating application as an added benefit to their agents. Since an agent is providing enough data to get a quote, iPPS can propagate this data onto the quote form using Oracle Insurance's EWPS.

EWPS allows the quote to be produced in real-time by calling the doPublish web service and providing it with an import file which contains the specific form set information and data.

Solution

You will need to produce an Oracle Insurance standard XML file or an Oracle Insurance Standard Out object for use as the import file. You can also use the doGetTemplateListData web service to get a ComposeData object that can be populated with data.

NOTE: See [Introduction to Enterprise Web Processing Services](#) for more information.

STARTING THE ISSUE PROCESS FROM A RATING APPLICATION

Business Scenario

Once the quote has been bound, an underwriter initiates the issuance process. Typically, the assigned underwriter produces the quote and will know when the time is right to issue the policy.

Solution

This is accomplished by using the doCreateFolder web service to place the documents needing to be issued into a folder for iPPS to process. The doCreateFolder web service can be called from a rating or other smart application data transformation tool that has the ability to map the needed forms for issuance into a Oracle Insurance standard XML file, a Standard Out object, or a ComposeData object.

The object or XML file is then submitted to the doCreateFolder web service which returns a FolderId. The parameters needed to create the folder are the Document Properties including Policy Number and Owner and others.

NOTE: See [Introduction to Enterprise Web Processing Services](#) for more information.

There are two ways to launch into iPPS to issue the policy.

If the person who starts the issuance process is not the one who will actually issue the policy, then use the Owner property of the doCreateFolder web service to define who will issue the policy. That person will log onto iPPS and view the work-in-process queue for transactions that need to be issued. The user can start working on an item and complete it within iPPS.

If the person starting the issuance process is the one who will complete the issue process, then they can be launched into iPPS immediately from the rating or smart application.

This can be accomplished by invoking the following URL with some standardized parameters:

```
http://[yourserver]/ipps/  
doCompose_V2.asp?LibraryId=AIC&SourceType=FOLDERID&FolderId=25&Auth  
User=ORACLE
```

Parameter	Description
-----------	-------------

LibraryId	AIC is the Agency/Configuration that contains the work-in-process queue.
SourceType	FOLDERID designates that you want to work on an item in the folder.
FolderId	25 is the unique identifier to the item that was returned from the doCreateFolder web service.
AuthUser	ORACLE is the user assigned to the folder item.

NOTE: A carrier may assign a block of policy numbers or develop an auto-policy number generating service so valid policy numbers can be provided to the rating application for delivery in the ImportFile for doCreateFolder.

VERIFYING POLICY NUMBERS

Business Scenario

You would like to verify the policy numbers agents are entering into iPPS during the issue process. Enforcing valid policy numbers during the issue process saves time and effort when later uploading completed policies into imaging and coding systems. Some carriers may provide a block of numbers to each agency to be used. Others may require certain prefixes to be used.

Solution

iPPS lets you use a URL service to verify the KeyID/policy number entered into the system. iPPS will make a call to a particular URL defined in the global.xml at the SYSTEM config level. Here is an example:

```
<DOVERIFYKEYIDURL>http://client.oracle.com/iPPS_Services/
cusverifykeyid.asp</ DOVERIFYKEYIDURL >
```

When populating the response XML, remember that the DetailedMessage is a message displayed to the user if the result is Failure. The DetailedMessage element is not required if the result is Success. The endpoint URL can expect to find the following data in the post:

Data	Description
authuser	The value for the current user.
key1	The value for the Company.
key2	The value for the Line of Business.
keyid	The value for policy number.
trancode	The value for the transaction code.
config	The value of the current configuration.
locid	The value for the agency code.
sublocid	The value for the agency sub code.
jurisdiction	The value for the tax state.

This represents a sample response from this service:

```
<?xml version="1.0" encoding="UTF-8"?>
<doVerifyKeyIdResponse xmlns:xsi="http://www.w3.org/2001/XMLSchema-
instance" xsi:noNamespaceSchemaLocation="doVerifyKeyIdResponse.xsd"
schemaVersion="1.0">
  <Result>Success</Result>
  <DetailedMessage>Policy Number must start with AIC</
DetailedMessage>
</doVerifyKeyIdResponse>
```

This service can validate formats for the policy number and verify that the policy number entered is within a valid range for a particular agency or sub agency. This service will need to be written by someone in the carrier's IT staff.

APPLYING DOCUMENT NAMING CONVENTIONS

Business Scenario

You would like to make sure the home office PDF and supporting XML/V2 output files are named consistently. This is especially important if the PDF and XML output files will be imported into an imaging system and the index information needs to be in the name of the files.

Solution

The print files produced are named by Docupresentment, not by iPPS. See the discussion of the DPRPrint rule in [Using the Documaker Bridge](#) for more information.

In summary, you can add these options to the CONFIG.INI file for Docupresentment to specify a naming convention:

```
< PrtType:PDF >
  FileName = ~KEYID ~TRANCODE _ ~DALRUN time.dal .pdf
< PrtType:PCL >
  FileName = ~KEYID ~TRANCODE _ ~DALRUN time.dal .pcl
< PrtType:XML >
  FileName = ~KEYID ~TRANCODE _ ~DALRUN time.dal .xml
< PrtType:V2 >
  FileName = ~KEYID ~TRANCODE _ ~DALRUN time.dal .v2
```

NOTE: You must make sure enough information is provided to produce uniquely named print files. When specifying the names for PDF output, you may need to write a DAL script that will generate a unique string using the UniqueString DAL function. This may be required because users can produce multiple PDF documents and without a unique string, they will all be named the same.

Additionally, you can use the same conventions to produce uniquely name files during the COMPLETE process. After the distribution choices picked by the user are processed, iPPS will send one final request to Docupresentment to processing any final complete processing. This functionality is beneficial whenever you want to establish that an XML or V2 file is produced every time a policy is completed.

You can also set up the system to produce the Home Office copy as PDF every time a policy is completed. Both of the files can then be used by the carrier's system for updating their coding system or imaging system. See the discussion of automatically printing upon completion in [Using the Documaker Bridge](#) for more information

Here is an example setup for the complete process from [config.ini]:

```
;Setup for complete print. This is to designate the Home Office PDF
and auto export
< Complete >
  CompleteType = COMP1
  CompleteType = COMP2
< Complete:COMP1 >
  FileType = PDF
  FileName ~KEYID ~TRANCODE _ ~DALRUN time.dal.pdf
  FileExt = pdf
  FilePath = d:\AIC\complete\
  Recipient = HOME OFFICE
```

```
< Complete:COMP2 >  
  FileType = XML  
  FileName = ~KEYID ~TRANCODE _ ~DALRUN time.dal.xml  
  FileExt = xml  
  FilePath = d:\AIC\complete\  
  Recipient = ALLRECIPIENTS
```

NOTE: If the FilePath location is set to the same location used by an existing upload process the agents use, then the upload process may occur real-time when the user completes their policy. This eliminates the need for the agent to upload the Home Office PDF, and XML/V2 as they do in PPS.

PROVIDING DEFAULT DISTRIBUTION OPTIONS TO AGENCIES

Business Scenario

You would like to create a more customized user experience for each of your agencies. In PPS and Documaker Workstation, each agency could set up their MDR output however they wanted. In iPPS, the carrier will have to set up, or have the agency send their setup, to allow for different default distribution options.

Solution

iPPS can handle the distribution/processing options needed for the business during the complete process. iPPS can optionally use a DistributionOptions.xml file for setting the default choices per configuration.

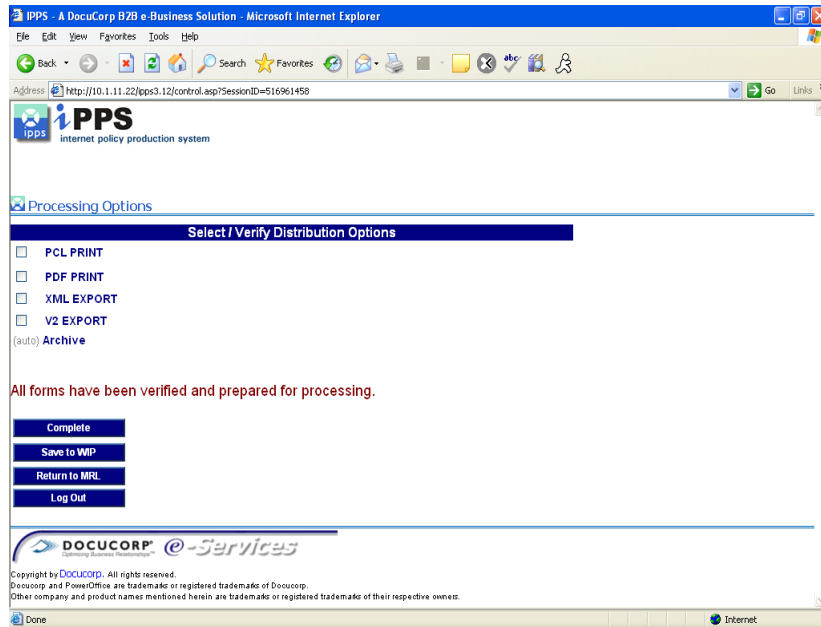
The system looks for this file in the path specified on the DEFAULTSRC attribute of the <PROCESSINGOPTIONS> node in the global.xml at each config level. To guarantee accurate permissions to load this file, the identity specified in Component Services or the Web Application Pool (if a library application), will need read access to this location. If this XML file is not present, no selections are defaulted.

iPPS assumes that immediate and batch print are for PCL print only. This allows for dynamic addition of recipients for PDF production. You specify the distribution options available in the system using the GLOBAL.XML file. An example is shown below.

The DESC attribute is the display value next to the checkbox. The NAME attribute determines what type of print is available. The value of INTERNETPROOF needs to remain but is ignored as a distribution option.

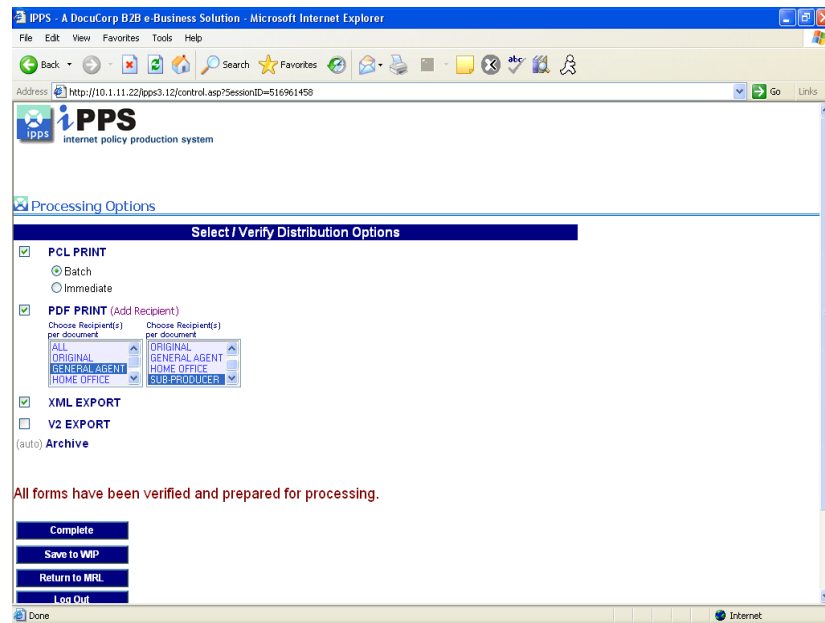
```
<PROCESSINGOPTIONS>
  <IROUTE NAME="PCLPRINT" DESC="PCL PRINT" PROCESS="FALSE" RESULTS=""
  RECIPIENT="ALL" EXPORTTYPE="2170">
  </IROUTE>
  <IROUTE NAME="PDFPRINT" DESC="PDF PRINT" PROCESS="FALSE"
  RESULTS="" RECIPIENT="ALL" EXPORTTYPE="2180">
  </IROUTE>
  <IROUTE NAME="XMLEXPORT" DESC="XML EXPORT" PROCESS="FALSE"
  RESULTS="" RECIPIENT="ALL" EXPORTTYPE="2195">
  </IROUTE>
  <IROUTE NAME="V2EXPORT" DESC="V2 EXPORT" PROCESS="FALSE"
  RESULTS="" EXPORTTYPE="2190">
  </IROUTE>
</PROCESSINGOPTIONS>
```

Based on these settings the user will be presented with a page similar to this one:



If the system finds the DistributionOptions.XML file, it applies some default selections. Here is an example:

```
<?xml version="1.0" encoding="UTF-8"?>
<DistributionOptions>
  <Channel>
    <PublishType>PDFPRINT</PublishType>
    <DistributionType>IMMEDIATE</DistributionType>
    <Recipient name="GENERAL AGENT"/>
  </Channel>
  <Channel>
    <PublishType>PDFPRINT</PublishType>
    <DistributionType>IMMEDIATE</DistributionType>
    <Recipient name="SUB-PRODUCER"/>
  </Channel>
  <Channel>
    <PublishType>PCLPRINT</PublishType>
    <DistributionType>SCHEDULED</DistributionType>
    <Recipient name="ALLRECIPIENTS"/>
  </Channel>
  <Channel>
    <PublishType>XMLEXPORT</PublishType>
    <DistributionType>IMMEDIATE</DistributionType>
    <Recipient name="ALLRECIPIENTS"/>
  </Channel>
</DistributionOptions>
```



INSERTING STATE STAMPS, SIGNATURES, AND LOGOS

Business Scenario

You would like to have the required state stamp to appear on the Dec Page without have to write additional DAL scripts with table lookups. You may also want to apply a signature to a form (Dec Page) based on the Company, Agency, Sub Agency, and so on.

Solution

For more information on inserting state stamps and signatures, refer to the [Documaker Workstation Administration Guide](#). Docupresentment will try to apply this functionality by default, and therefore make it available to iPPS if the FAP files are set up correctly.

IMPORTING ARCHIVE DATA INTO A NEW POLICY

Business Scenario

You would like use archived data to issue a renewal policy. You want the required forms to be pre-selected and use the data from a previously archived transaction.

Solution

This feature mimics the functionality of the TRNImpDatFromArchive feature in PPS with a few differences. The Documaker Workstation Administration Guide states this is the setting you need to import from archive:

```
< ImportFormats >  
02 =;IA;Import From Archive;TRNW32->TRNImpDatFromArchive;
```

For iPPS, this is the global.xml setting:

```
<PPS>  
  <IMPORTFROMARCHIVE>  
    <DATAONLY>TRUE</DATAONLY>  
  </IMPORTFROMARCHIVE>  
</PPS>
```

This information can be set at the global(system) config or each specific agency/config level.

iPPS will import the form set from the archived transaction. Once on the Forms Selection window, the pre-selected forms will be the required forms for the current form.dat file. If the user picks forms that existed in the archived form set, the system tries to match the form- and section-level data.

This way you could potentially get more than just global data. If you want the form set and archive index values to come across as the SelectForms and TransferRecord options in PPS do, then do not set the DATAONLY setting as specified above. The default archive retrieval of iPPS will select the forms and transfer the archive record by default. This lets the archived form set's data be used with a new transaction.

Appendix A

Example DFD Files and SQL Scripts

This appendix lists example DFD and SQL files referenced in the Business Scenarios in Chapter 1. Included are the following:

- [Example APPIDX.DFD File on page 40](#)
- [Example ARCHIVE.DFD File on page 46](#)
- [Example WIP.DFD File on page 48](#)
- [Example WIPDATA.DFD File on page 53](#)
- [Example APPIDX SQL Script on page 55](#)
- [Example ARCHIVE SQL Script on page 56](#)
- [Example CATALOG SQL Script on page 57](#)
- [Example QA_MRL SQL Script on page 58](#)
- [Example WIP SQL Script on page 60](#)
- [Example WIP_Archive_Combined SQL Script on page 61](#)
- [Example WIPDATA SQL Script on page 64](#)
- [Example UserDB SQL Script on page 65](#)

EXAMPLE APPIDX.DFD FILE

```
; This is DFD file for application archive index file
; same as the standard WIP file.
```

```
[FIELDS]
FIELDNAME=KEY1
FIELDNAME=KEY2
FIELDNAME=KEYID
FIELDNAME=RECTYPE
FIELDNAME=CREATETIME
FIELDNAME=ORIGUSER
FIELDNAME=CURRUSER
FIELDNAME=MODIFYTIME
FIELDNAME=FORMSETID
FIELDNAME=TRANCODE
FIELDNAME=STATUSCODE
FIELDNAME=FROMUSER
FIELDNAME=FROMTIME
FIELDNAME=TOUSER
FIELDNAME=TOTIME
FIELDNAME=DESC
FIELDNAME=INUSE
FIELDNAME=ARCKEY
FIELDNAME=APPDATA
FIELDNAME=RECNUM
FIELDNAME=RUNDATE
FIELDNAME=INVFLAG
FIELDNAME=CLAIMFL
FIELDNAME=TRNNAME
```

```
[FIELD:KEY1]
EXT_TYPE      = CHAR_ARRAY
EXT_LENGTH    = 30
EXT_PRECISION= 0
INT_TYPE=     CHAR_ARRAY
INT_LENGTH=   30
INT_PRECISION= 0
KEY=Y
REQUIRED=Y
```

```
[FIELD:KEY2]
EXT_TYPE      = CHAR_ARRAY
EXT_LENGTH    = 30
EXT_PRECISION= 0
INT_TYPE=     CHAR_ARRAY
INT_LENGTH=   30
INT_PRECISION= 0
KEY=Y
REQUIRED=Y
```

```
[FIELD:KEYID]
EXT_TYPE      = CHAR_ARRAY
EXT_LENGTH    = 20
EXT_PRECISION= 0
INT_TYPE=     CHAR_ARRAY
INT_LENGTH=   20
INT_PRECISION= 0
```

```
KEY=Y
REQUIRED=Y

[FIELD:RECTYPE]
EXT_TYPE      = CHAR_ARRAY
EXT_LENGTH    = 3
EXT_PRECISION = 0
INT_TYPE=     CHAR_ARRAY
INT_LENGTH=   3
INT_PRECISION = 0
KEY=N
REQUIRED=Y

[FIELD:CREATETIME]
EXT_TYPE      = CHAR_ARRAY
EXT_LENGTH    = 8
EXT_PRECISION = 0
INT_TYPE=     CHAR_ARRAY
INT_LENGTH=   8
INT_PRECISION = 0
KEY=N
REQUIRED=Y

[FIELD:ORIGUSER]
EXT_TYPE      = CHAR_ARRAY
EXT_LENGTH    = 8
EXT_PRECISION = 0
INT_TYPE=     CHAR_ARRAY
INT_LENGTH=   8
INT_PRECISION = 0
KEY=N
REQUIRED=Y

[FIELD:CURRUSER]
EXT_TYPE      = CHAR_ARRAY
EXT_LENGTH    = 8
EXT_PRECISION = 0
INT_TYPE=     CHAR_ARRAY
INT_LENGTH=   8
INT_PRECISION = 0
KEY=Y
REQUIRED=Y

[FIELD:MODIFYTIME]
EXT_TYPE      = CHAR_ARRAY
EXT_LENGTH    = 8
EXT_PRECISION = 0
INT_TYPE=     CHAR_ARRAY
INT_LENGTH=   8
INT_PRECISION = 0
KEY=N
REQUIRED=Y

[FIELD:FORMSETID]
EXT_TYPE      = CHAR_ARRAY
```

```
EXT_LENGTH      = 8
EXT_PRECISION= 0
INT_TYPE=       CHAR_ARRAY
INT_LENGTH=     8
INT_PRECISION= 0
KEY=N
REQUIRED=Y
```

```
[FIELD:TRANCODE]
EXT_TYPE        = CHAR_ARRAY
EXT_LENGTH      = 2
EXT_PRECISION= 0
INT_TYPE=       CHAR_ARRAY
INT_LENGTH=     2
INT_PRECISION= 0
KEY=N
REQUIRED=Y
```

```
[FIELD:STATUSCODE]
EXT_TYPE        = CHAR_ARRAY
EXT_LENGTH      = 2
EXT_PRECISION= 0
INT_TYPE=       CHAR_ARRAY
INT_LENGTH=     2
INT_PRECISION= 0
KEY=N
REQUIRED=Y
```

```
[FIELD:FROMUSER]
EXT_TYPE        = CHAR_ARRAY
EXT_LENGTH      = 8
EXT_PRECISION= 0
INT_TYPE=       CHAR_ARRAY
INT_LENGTH=     8
INT_PRECISION= 0
KEY=N
REQUIRED=Y
```

```
[FIELD:FROMTIME]
EXT_TYPE        = CHAR_ARRAY
EXT_LENGTH      = 8
EXT_PRECISION= 0
INT_TYPE=       CHAR_ARRAY
INT_LENGTH=     8
INT_PRECISION= 0
KEY=N
REQUIRED=Y
```

```
[FIELD:TOUSER]
EXT_TYPE        = CHAR_ARRAY
EXT_LENGTH      = 8
EXT_PRECISION= 0
INT_TYPE=       CHAR_ARRAY
INT_LENGTH=     8
INT_PRECISION= 0
```

```
KEY=N
REQUIRED=Y

[FIELD:TOTIME]
EXT_TYPE      = CHAR_ARRAY
EXT_LENGTH    = 8
EXT_PRECISION= 0
INT_TYPE=     CHAR_ARRAY
INT_LENGTH=   8
INT_PRECISION= 0
KEY=N
REQUIRED=Y

[FIELD:DESC]
EXT_TYPE      = CHAR_ARRAY
EXT_LENGTH    = 30
EXT_PRECISION= 0
INT_TYPE=     CHAR_ARRAY
INT_LENGTH=   30
INT_PRECISION= 0
KEY=N
REQUIRED=Y

[FIELD:INUSE]
EXT_TYPE      = CHAR_ARRAY
EXT_LENGTH    = 1
EXT_PRECISION= 0
INT_TYPE=     CHAR_ARRAY
INT_LENGTH=   1
INT_PRECISION= 0
KEY=N
REQUIRED=Y

[FIELD:ARCKEY]
EXT_TYPE      = CHAR_ARRAY
EXT_LENGTH    = 18
EXT_PRECISION= 0
INT_TYPE=     CHAR_ARRAY
INT_LENGTH=   18
INT_PRECISION= 0
KEY=N
REQUIRED=N

[FIELD:APPDATA]
EXT_TYPE      = CHAR_ARRAY
EXT_LENGTH    = 150
EXT_PRECISION= 0
INT_TYPE=     CHAR_ARRAY
INT_LENGTH=   150
INT_PRECISION= 0
KEY=N
REQUIRED=N

[FIELD:RECNUM]
EXT_TYPE      = NOT_PRESENT
```

```
EXT_LENGTH      = 0
EXT_PRECISION= 0
INT_TYPE=      LONG
INT_LENGTH=    4
INT_PRECISION= 0
KEY=N
REQUIRED=Y
```

```
[FIELD:RUNDATE]
EXT_TYPE        = NOT_PRESENT
EXT_LENGTH      = 0
EXT_PRECISION= 0
INT_TYPE=      CHAR_ARRAY
INT_LENGTH=    8
INT_PRECISION= 0
KEY=N
REQUIRED=Y
```

```
[FIELD:INVFLAG]
EXT_TYPE        = NOT_PRESENT
EXT_LENGTH      = 0
EXT_PRECISION= 0
INT_TYPE=      CHAR_ARRAY
INT_LENGTH=    1
INT_PRECISION= 0
KEY=N
REQUIRED=N
```

```
[FIELD:CLAIMFL]
EXT_TYPE        = NOT_PRESENT
EXT_LENGTH      = 0
EXT_PRECISION= 0
INT_TYPE=      CHAR_ARRAY
INT_LENGTH=    1
INT_PRECISION= 0
KEY=N
REQUIRED=N
```

```
[FIELD:TRNNAME]
EXT_TYPE        = CHAR_ARRAY
EXT_LENGTH      = 62
EXT_PRECISION= 0
INT_TYPE=      CHAR_ARRAY
INT_LENGTH=    62
INT_PRECISION= 0
KEY=N
REQUIRED=N
```

```
[KEYS]
KEYNAME=KEY1
KEYNAME=KEY2
KEYNAME=KEYID
KEYNAME=NAME_TAG
```

```
[KEY:KEY1]
```

EXPRESSION=KEY1
FIELDLIST=KEY1

[KEY:KEY2]
EXPRESSION=KEY2
FIELDLIST=KEY2

[KEY:KEYID]
EXPRESSION=KEYID
FIELDLIST=KEYID

[KEY:NAMETAG]
EXPRESSION=TRNNAME
FIELDLIST=TRNNAME

EXAMPLE ARCHIVE.DFD FILE

```

< FIELDS >
  FIELDNAME = ARCKEY
  FIELDNAME = SEQ_NUM
  FIELDNAME = CONT_FLAG
  FIELDNAME = TOTAL_SIZE
  FIELDNAME = CARDATA

< FIELD:ARCKEY >
  INT_TYPE = CHAR_ARRAY
  INT_LENGTH = 18
  EXT_TYPE = CHAR_ARRAY
  EXT_LENGTH = 18
  KEY = N
  REQUIRED = N

< FIELD:SEQ_NUM >
  INT_TYPE = CHAR_ARRAY
  INT_LENGTH = 5
  EXT_TYPE = CHAR_ARRAY
  EXT_LENGTH = 5
  KEY = N
  REQUIRED = N

< FIELD:CONT_FLAG >
  INT_TYPE = CHAR_ARRAY
  INT_LENGTH = 1
  EXT_TYPE = CHAR_ARRAY
  EXT_LENGTH = 1
  KEY = N
  REQUIRED = N

< FIELD:TOTAL_SIZE >
  INT_TYPE = LONG
  INT_LENGTH = 4
  EXT_TYPE = LONG
  EXT_LENGTH = 4
  KEY = N
  REQUIRED = N

< FIELD:CARDATA >
  INT_TYPE = BLOB
  INT_LENGTH = 252
  EXT_TYPE = BLOB
  EXT_LENGTH = 252
  KEY = N
  REQUIRED = N

< KEYS >
  KEYNAME = ARCKEY
  KEYNAME = SEQ_NUM
  KEYNAME = CAR_KEY

< KEY:ARCKEY >
  EXPRESSION = ARCKEY+SEQ_NUM
  FIELDLIST = ARCKEY, SEQ_NUM

```



```
< KEY:SEQ_NUM >  
  EXPRESSION = SEQ_NUM  
  FIELDLIST = SEQ_NUM  
  
< KEY:CAR_KEY >  
  EXPRESSION = ARCKEY  
  FIELDLIST = ARCKEY
```

EXAMPLE WIP.DFD FILE

```

< FIELDS >
  FIELDNAME = UNIQUE_ID
  FIELDNAME = KEY1
  FIELDNAME = KEY2
  FIELDNAME = KEYID
  FIELDNAME = RECTYPE
  FIELDNAME = CREATETIME
  FIELDNAME = ORIGUSER
  FIELDNAME = CURRUSER
  FIELDNAME = MODIFYTIME
  FIELDNAME = FORMSETID
  FIELDNAME = TRANCODE
  FIELDNAME = STATUSCODE
  FIELDNAME = FROMUSER
  FIELDNAME = FROMTIME
  FIELDNAME = TOUSER
  FIELDNAME = TOTIME
  FIELDNAME = DESC
  FIELDNAME = INUSE
  FIELDNAME = ARCKEY
  FIELDNAME = APPDATA
  FIELDNAME = GUIDKEY
  FIELDNAME = TRNNAME
  FIELDNAME = LOCID
  FIELDNAME = SUBLOCID
  FIELDNAME = JURISDICTN
  FIELDNAME = QUEUID
  FIELDNAME = RECNUM
< FIELD:APPDATA >
  EXT_LENGTH = 150
  EXT_TYPE   = CHAR_ARRAY
  INT_LENGTH = 150
  INT_TYPE   = CHAR_ARRAY
  KEY        = N
  REQUIRED    = N
< FIELD:ARCKEY >
  EXT_LENGTH = 18
  EXT_TYPE   = CHAR_ARRAY
  INT_LENGTH = 18
  INT_TYPE   = CHAR_ARRAY
  KEY        = N
  REQUIRED    = N
< FIELD:CREATETIME >
  EXT_LENGTH = 8
  EXT_TYPE   = CHAR_ARRAY
  INT_LENGTH = 8
  INT_TYPE   = CHAR_ARRAY
  KEY        = N
  REQUIRED    = N
< FIELD:CURRUSER >
  EXT_LENGTH = 64
  EXT_TYPE   = CHAR_ARRAY
  INT_LENGTH = 64
  INT_TYPE   = CHAR_ARRAY
  KEY        = N

```

```
        REQUIRED = N
< FIELD:DESC >
    EXT_LENGTH = 30
    EXT_TYPE   = CHAR_ARRAY
    INT_LENGTH = 30
    INT_TYPE   = CHAR_ARRAY
    KEY        = N
    REQUIRED    = N
< FIELD:FORMSETID >
    EXT_LENGTH = 32
    EXT_TYPE   = CHAR_ARRAY
    INT_LENGTH = 32
    INT_TYPE   = CHAR_ARRAY
    KEY        = N
    REQUIRED    = N
< FIELD:FROMTIME >
    EXT_LENGTH = 8
    EXT_TYPE   = CHAR_ARRAY
    INT_LENGTH = 8
    INT_TYPE   = CHAR_ARRAY
    KEY        = N
    REQUIRED    = N
< FIELD:FROMUSER >
    EXT_LENGTH = 64
    EXT_TYPE   = CHAR_ARRAY
    INT_LENGTH = 64
    INT_TYPE   = CHAR_ARRAY
    KEY        = N
    REQUIRED    = N
< FIELD:GUIDKEY >
    EXT_LENGTH = 32
    EXT_TYPE   = CHAR_ARRAY
    INT_LENGTH = 32
    INT_TYPE   = CHAR_ARRAY
    KEY        = N
    REQUIRED    = N
< FIELD:INUSE >
    EXT_LENGTH = 1
    EXT_TYPE   = CHAR_ARRAY
    INT_LENGTH = 1
    INT_TYPE   = CHAR_ARRAY
    KEY        = N
    REQUIRED    = N
< FIELD:JURISDICTN >
    EXT_LENGTH = 30
    EXT_TYPE   = CHAR_ARRAY
    INT_LENGTH = 30
    INT_TYPE   = CHAR_ARRAY
    KEY        = N
    REQUIRED    = N
< FIELD:UNIQUE_ID >
    INT_TYPE   = CHAR_ARRAY
    INT_LENGTH = 32
    EXT_TYPE   = CHAR_ARRAY
    EXT_LENGTH = 32
```

```
KEY = N
REQUIRED = N
< FIELD:KEY1 >
EXT_LENGTH = 62
EXT_TYPE = CHAR_ARRAY
INT_LENGTH = 62
INT_TYPE = CHAR_ARRAY
KEY = N
REQUIRED = N
< FIELD:KEY2 >
EXT_LENGTH = 62
EXT_TYPE = CHAR_ARRAY
INT_LENGTH = 62
INT_TYPE = CHAR_ARRAY
KEY = N
REQUIRED = N
< FIELD:KEYID >
EXT_LENGTH = 20
EXT_TYPE = CHAR_ARRAY
INT_LENGTH = 20
INT_TYPE = CHAR_ARRAY
KEY = N
REQUIRED = N
< FIELD:LOCID >
EXT_LENGTH = 30
EXT_TYPE = CHAR_ARRAY
INT_LENGTH = 30
INT_TYPE = CHAR_ARRAY
KEY = N
REQUIRED = N
< FIELD:MODIFYTIME >
EXT_LENGTH = 8
EXT_TYPE = CHAR_ARRAY
INT_LENGTH = 8
INT_TYPE = CHAR_ARRAY
KEY = N
REQUIRED = N
< FIELD:ORIGUSER >
EXT_LENGTH = 64
EXT_TYPE = CHAR_ARRAY
INT_LENGTH = 64
INT_TYPE = CHAR_ARRAY
KEY = N
REQUIRED = N
< FIELD:RECNUM >
EXT_LENGTH = 0
EXT_TYPE = NOT_PRESENT
INT_LENGTH = 4
INT_TYPE = LONG
KEY = N
REQUIRED = N
< FIELD:RECTYPE >
EXT_LENGTH = 3
EXT_TYPE = CHAR_ARRAY
INT_LENGTH = 3
```

```
        INT_TYPE    = CHAR_ARRAY
        KEY          = N
        REQUIRED      = N
< FIELD:STATUSCODE >
        EXT_LENGTH  = 2
        EXT_TYPE    = CHAR_ARRAY
        INT_LENGTH  = 2
        INT_TYPE    = CHAR_ARRAY
        KEY          = N
        REQUIRED      = N
< FIELD:SUBLOCID >
        EXT_LENGTH  = 30
        EXT_TYPE    = CHAR_ARRAY
        INT_LENGTH  = 30
        INT_TYPE    = CHAR_ARRAY
        KEY          = N
        REQUIRED      = N
< FIELD:TOTIME >
        EXT_LENGTH  = 8
        EXT_TYPE    = CHAR_ARRAY
        INT_LENGTH  = 8
        INT_TYPE    = CHAR_ARRAY
        KEY          = N
        REQUIRED      = N
< FIELD:TOUSER >
        EXT_LENGTH  = 64
        EXT_TYPE    = CHAR_ARRAY
        INT_LENGTH  = 64
        INT_TYPE    = CHAR_ARRAY
        KEY          = N
        REQUIRED      = N
< FIELD:TRANCODE >
        EXT_LENGTH  = 2
        EXT_TYPE    = CHAR_ARRAY
        INT_LENGTH  = 2
        INT_TYPE    = CHAR_ARRAY
        KEY          = N
        REQUIRED      = N
< FIELD:TRNNAME >
        EXT_LENGTH  = 62
        EXT_TYPE    = CHAR_ARRAY
        INT_LENGTH  = 62
        INT_TYPE    = CHAR_ARRAY
        KEY          = N
        REQUIRED      = N
< FIELD:QUEUEID >
        EXT_LENGTH  = 32
        EXT_TYPE    = CHAR_ARRAY
        INT_LENGTH  = 32
        INT_TYPE    = CHAR_ARRAY
        KEY          = N
        REQUIRED      = N

< KEY:UNIQUE_ID >
        EXPRESSION  = UNIQUE_ID
```

```
        FIELDLIST = UNIQUE_ID
< KEY:DOCTAG >
    DESCENDING = 0
    EXPRESSION = KEY1+KEY2+KEYID+RECTYPE
    FIELDLIST  = KEY1,KEY2,KEYID,RECTYPE
    FILTER     =
    UNIQUE     = 0
< KEY:KEY2TAG >
    DESCENDING = 0
    EXPRESSION = KEY2
    FIELDLIST  = KEY2
    FILTER     =
    UNIQUE     = 0
< KEY:KEYIDTAG >
    DESCENDING = 0
    EXPRESSION = KEYID
    FIELDLIST  = KEYID
    FILTER     =
    UNIQUE     = 0
< KEY:USERTAG >
    DESCENDING = 0
    EXPRESSION = CURRUSER
    FIELDLIST  = CURRUSER
    FILTER     =
    UNIQUE     = 0
< KEYS >
    KEYNAME    = UNIQUE_ID
    KEYNAME    = DOCTAG
    KEYNAME    = KEY2TAG
    KEYNAME    = KEYIDTAG
    KEYNAME    = USERTAG
```

EXAMPLE WIPDATA.DFD D FILE

```

< FIELDS >
FIELDNAME = FORMSETID
FIELDNAME = SEQ_NUM
FIELDNAME = CONT_FLAG
FIELDNAME = TOTAL_SIZE
FIELDNAME = CARDATA

< FIELD:FORMSETID >
INT_TYPE = CHAR_ARRAY
INT_LENGTH = 32
EXT_TYPE = CHAR_ARRAY
EXT_LENGTH = 32
KEY = Yes
REQUIRED = Yes

< FIELD:SEQ_NUM >
INT_TYPE = CHAR_ARRAY
INT_LENGTH = 5
EXT_TYPE = CHAR_ARRAY
EXT_LENGTH = 5
KEY = Yes
REQUIRED = Yes

< FIELD:CONT_FLAG >
INT_TYPE = CHAR_ARRAY
INT_LENGTH = 1
EXT_TYPE = CHAR_ARRAY
EXT_LENGTH = 1
KEY = Yes
REQUIRED = Yes

< FIELD:TOTAL_SIZE >
INT_Type = LONG
INT_Length = 4
EXT_Type = LONG
EXT_Length = 4
Key = No
Required = No

< FIELD:CARDATA >
INT_Type = BLOB
INT_Length = 252
EXT_Type = BLOB
EXT_Length = 252
Key = No
Required = No

< Keys >
KeyName = FORMSETID
KeyName = FORMSETIDSEQ
KeyName = SEQ_NUM

< KEY:FORMSETID >
Expression = FORMSETID
FieldList = FORMSETID

```

```
< KEY:FORMSETIDSEQ >
Expression = FORMSETID+SEQ_NUM
FieldList = FORMSETID,SEQ_NUM

< KEY:SEQ_NUM >
Expression = SEQ_NUM
FieldList = SEQ_NUM
```


EXAMPLE APPIDX SQL SCRIPT

Here is an example of the APPIDX.SQL script:

```
USE [master]
GO
/***** Object:  Table [dbo].[OW0006_APPIDX]      Script Date: 10/22/2009
12:31:02 *****/
SET ANSI_NULLS ON
GO
SET QUOTED_IDENTIFIER ON
GO
SET ANSI_PADDING ON
GO
CREATE TABLE [dbo].[OW0006_APPIDX] (
    [KEY1] [char] (30) NOT NULL,
    [KEY2] [char] (30) NOT NULL,
    [KEYID] [char] (20) NOT NULL,
    [RECTYPE] [char] (3) NOT NULL,
    [CREATETIME] [char] (8) NOT NULL,
    [ORIGUSER] [char] (8) NOT NULL,
    [CURRUSER] [char] (8) NOT NULL,
    [MODIFYTIME] [char] (8) NOT NULL,
    [FORMSETID] [char] (8) NOT NULL,
    [TRANCODE] [char] (2) NOT NULL,
    [STATUSCODE] [char] (2) NOT NULL,
    [FROMUSER] [char] (8) NOT NULL,
    [FROMTIME] [char] (8) NOT NULL,
    [TOUSER] [char] (8) NOT NULL,
    [TOTIME] [char] (8) NOT NULL,
    [DESC] [char] (30) NOT NULL,
    [INUSE] [char] (1) NOT NULL,
    [ARCKEY] [char] (18) NULL,
    [APPPDATA] [char] (150) NULL,
    [TRNNAME] [char] (62) NULL
) ON [PRIMARY]

GO
SET ANSI_PADDING OFF
```

EXAMPLE ARCHIVE SQL SCRIPT

Here is an example of the ARCHIVE.SQL script:

```
CREATE TABLE [OW0006_ARCHIVE] (
    [ARCKEY] [char] (18) COLLATE SQL_Latin1_General_CP1_CI_AS NULL,
    [SEQ_NUM] [char] (5) COLLATE SQL_Latin1_General_CP1_CI_AS NULL,
    [CONT_FLAG] [char] (1) COLLATE SQL_Latin1_General_CP1_CI_AS NULL,
    [TOTAL_SIZE] [int] NULL,
    [CARDATA] [image] NULL
) ON [PRIMARY] TEXTIMAGE_ON [PRIMARY]
GO
CREATE INDEX [OW0006_ARCHIVEARCKEY] ON [OW0006_ARCHIVE] ([ARCKEY], [SEQ_NUM])
ON [PRIMARY]
GO
CREATE INDEX [OW0006_ARCHIVESEQ_NUM] ON [OW0006_ARCHIVE] ([SEQ_NUM]) ON
[PRIMARY]
GO
CREATE INDEX [OW0006_ARCHIVECAR_KEY] ON [OW0006_ARCHIVE] ([ARCKEY]) ON
[PRIMARY]
GO
```

EXAMPLE CATALOG SQL SCRIPT

Here is an example of the CATALOG.SQL script:

```
USE [master]
GO
/***** Object:  Table [dbo].[OW0006_CATALOG]      Script Date: 10/22/2009
12:32:08 *****/
SET ANSI_NULLS ON
GO
SET QUOTED_IDENTIFIER ON
GO
SET ANSI_PADDING ON
GO
CREATE TABLE [dbo].[OW0006_CATALOG] (
    [CATALOGID] [char] (10) NULL,
    [CARFILE] [char] (8) NULL,
    [MEDIAID] [char] (11) NULL,
    [STATUS] [char] (1) NULL
) ON [PRIMARY]

GO
SET ANSI_PADDING OFF
```

EXAMPLE QA_MRL SQL SCRIPT

Here is an example of the QA_MRL.SQL script:

```
CREATE TABLE [WW_PROD] (
    [FILETYPE] [char] (3) COLLATE SQL_Latin1_General_CP1_CI_AS NULL,
    [FILESTYP] [char] (3) COLLATE SQL_Latin1_General_CP1_CI_AS NULL,
    [FILENAME] [char] (100) COLLATE SQL_Latin1_General_CP1_CI_AS NULL,
    [RESOURCE] [char] (25) COLLATE SQL_Latin1_General_CP1_CI_AS NULL,
    [DESCRIPT] [char] (100) COLLATE SQL_Latin1_General_CP1_CI_AS NULL,
    [EFFECTIV] [char] (10) COLLATE SQL_Latin1_General_CP1_CI_AS NULL,
    [MODIFYTM] [char] (10) COLLATE SQL_Latin1_General_CP1_CI_AS NULL,
    [FILEINDX] [char] (8) COLLATE SQL_Latin1_General_CP1_CI_AS NULL,
    [RECSTAT] [char] (3) COLLATE SQL_Latin1_General_CP1_CI_AS NULL,
    [VERSION] [char] (5) COLLATE SQL_Latin1_General_CP1_CI_AS NULL,
    [REVISION] [char] (5) COLLATE SQL_Latin1_General_CP1_CI_AS NULL,
    [USERID] [char] (64) COLLATE SQL_Latin1_General_CP1_CI_AS NULL,
    [USRLEVL] [char] (2) COLLATE SQL_Latin1_General_CP1_CI_AS NULL,
    [PASSWD] [char] (64) COLLATE SQL_Latin1_General_CP1_CI_AS NULL,
    [UNIQUE_ID] [char] (26) COLLATE SQL_Latin1_General_CP1_CI_AS NULL,
    [ARCKEY] [char] (18) COLLATE SQL_Latin1_General_CP1_CI_AS NULL,
    [MODE] [char] (25) COLLATE SQL_Latin1_General_CP1_CI_AS NULL,
    [STATUS] [char] (25) COLLATE SQL_Latin1_General_CP1_CI_AS NULL,
    [CLASS] [char] (25) COLLATE SQL_Latin1_General_CP1_CI_AS NULL,
    [PROJECT] [char] (25) COLLATE SQL_Latin1_General_CP1_CI_AS NULL
) ON [PRIMARY]
GO
CREATE INDEX [WW_PRODFILEINDX] ON [WW_PROD]([FILETYPE], [FILESTYP],
[FILENAME], [VERSION], [REVISION]) ON [PRIMARY]
GO
CREATE INDEX [WW_PRODUNIQUE_ID] ON [WW_PROD]([UNIQUE_ID]) ON [PRIMARY]
GO
CREATE TABLE [WW_PRODD] (
    [ARCKEY] [char] (18) COLLATE SQL_Latin1_General_CP1_CI_AS NULL,
    [SEQ_NUM] [char] (5) COLLATE SQL_Latin1_General_CP1_CI_AS NULL,
    [CONT_FLAG] [char] (1) COLLATE SQL_Latin1_General_CP1_CI_AS NULL,
    [TOTAL_SIZE] [int] NULL,
    [CARDATA] [image] NULL
) ON [PRIMARY]
GO
CREATE INDEX [WW_PRODDARCKEY] ON [WW_PRODD]([ARCKEY], [SEQ_NUM]) ON
[PRIMARY]
GO
CREATE INDEX [WW_PRODDSEQ_NUM] ON [WW_PRODD]([SEQ_NUM]) ON [PRIMARY]
GO
CREATE INDEX [WW_PRODDCAR_KEY] ON [WW_PRODD]([ARCKEY]) ON [PRIMARY]
GO
CREATE TABLE [WW_PRODCC] (
    [CATALOGID] [char] (10) COLLATE SQL_Latin1_General_CP1_CI_AS NULL,
    [CARFILE] [char] (8) COLLATE SQL_Latin1_General_CP1_CI_AS NULL,
    [MEDIAID] [char] (11) COLLATE SQL_Latin1_General_CP1_CI_AS NULL,
    [LASTNUM] [char] (8) COLLATE SQL_Latin1_General_CP1_CI_AS NULL,
    [STATUS] [char] (1) COLLATE SQL_Latin1_General_CP1_CI_AS NULL
) ON [PRIMARY]
GO
CREATE INDEX [WW_PRODCCATALOGKEY] ON [WW_PRODCC]([CATALOGID]) ON [PRIMARY]
GO
CREATE INDEX [WW_PRODCCARFILEKEY] ON [WW_PRODCC]([CARFILE]) ON [PRIMARY]
```

```
GO
CREATE INDEX [WW_PRODCLASTNUMKEY] ON [WW_PROD] ([LASTNUM]) ON [PRIMARY]
GO
CREATE TABLE [WW_PRODL] (
    [DATE] [char] (8) COLLATE SQL_Latin1_General_CP1_CI_AS NULL,
    [TIME] [char] (10) COLLATE SQL_Latin1_General_CP1_CI_AS NULL,
    [LIBNAME] [char] (129) COLLATE SQL_Latin1_General_CP1_CI_AS NULL,
    [ACTION] [char] (20) COLLATE SQL_Latin1_General_CP1_CI_AS NULL,
    [FILENAME] [char] (100) COLLATE SQL_Latin1_General_CP1_CI_AS NULL,
    [FILETYPE] [char] (3) COLLATE SQL_Latin1_General_CP1_CI_AS NULL,
    [VERSION] [char] (5) COLLATE SQL_Latin1_General_CP1_CI_AS NULL,
    [REVISION] [char] (5) COLLATE SQL_Latin1_General_CP1_CI_AS NULL,
    [EFFECTIV] [char] (10) COLLATE SQL_Latin1_General_CP1_CI_AS NULL,
    [MODE] [char] (25) COLLATE SQL_Latin1_General_CP1_CI_AS NULL,
    [STATUS] [char] (25) COLLATE SQL_Latin1_General_CP1_CI_AS NULL,
    [CLASS] [char] (25) COLLATE SQL_Latin1_General_CP1_CI_AS NULL,
    [PROJECT] [char] (25) COLLATE SQL_Latin1_General_CP1_CI_AS NULL,
    [USERID] [char] (64) COLLATE SQL_Latin1_General_CP1_CI_AS NULL,
    [PROCESS] [char] (20) COLLATE SQL_Latin1_General_CP1_CI_AS NULL
) ON [PRIMARY]
GO
CREATE INDEX [WW_PRODLLOGTAG] ON [WW_PRODL] ([DATE], [TIME]) ON [PRIMARY]
GO
CREATE INDEX [WW_PRODLUNIQTAG] ON [WW_PRODL] ([DATE], [TIME], [LIBNAME],
[ACTION], [FILENAME], [FILETYPE], [VERSION], [REVISION], [EFFECTIV]) ON
[PRIMARY]
GO
```

**EXAMPLE WIP
SQL SCRIPT**

Here is an example of the WIP.SQL script:

```

USE [master]
GO
/***** Object: Table [dbo].[OW0006_WIP]    Script Date: 10/22/2009 12:33:25
*****/
SET ANSI_NULLS ON
GO
SET QUOTED_IDENTIFIER ON
GO
SET ANSI_PADDING ON
GO
CREATE TABLE [dbo].[OW0006_WIP] (
    [UNIQUE_ID] [char] (32) NULL,
    [KEY1] [char] (62) NULL,
    [KEY2] [char] (62) NULL,
    [KEYID] [char] (20) NULL,
    [RECTYPE] [char] (3) NULL,
    [CREATETIME] [char] (8) NULL,
    [ORIGUSER] [char] (64) NULL,
    [CURRUSER] [char] (64) NULL,
    [MODIFYTIME] [char] (8) NULL,
    [FORMSETID] [char] (32) NULL,
    [TRANCODE] [char] (2) NULL,
    [STATUSCODE] [char] (2) NULL,
    [FROMUSER] [char] (64) NULL,
    [FROMTIME] [char] (8) NULL,
    [TOUSER] [char] (64) NULL,
    [TOTIME] [char] (8) NULL,
    [DESC] [char] (30) NULL,
    [INUSE] [char] (1) NULL,
    [ARCKEY] [char] (18) NULL,
    [APPPDATA] [char] (150) NULL,
    [GUIDKEY] [char] (32) NULL,
    [TRNNAME] [char] (62) NULL,
    [LOCID] [char] (30) NULL,
    [SUBLOCID] [char] (30) NULL,
    [JURISDICTN] [char] (30) NULL
) ON [PRIMARY]

GO
SET ANSI_PADDING OFF

```

EXAMPLE WIP_ARCHIVE COMBINED SQL SCRIPT

Here is an example of the WIP_ARCHIVED_COMBINED.SQL script:

NOTE: This script is a combination of the [Example WIP SQL Script on page 60](#) and [Example ARCHIVE SQL Script on page 56](#). Combining these scripts into a single script can make it easier to do updates.

```
USE [master]
GO
/***** Object:  Table [dbo].[OW0006_APPIDX]      Script Date: 10/22/2009
12:31:02 *****/
SET ANSI_NULLS ON
GO
SET QUOTED_IDENTIFIER ON
GO
SET ANSI_PADDING ON
GO
CREATE TABLE [dbo].[OW0006_APPIDX] (
    [KEY1] [char] (30) NOT NULL,
    [KEY2] [char] (30) NOT NULL,
    [KEYID] [char] (20) NOT NULL,
    [RECTYPE] [char] (3) NOT NULL,
    [CREATETIME] [char] (8) NOT NULL,
    [ORIGUSER] [char] (8) NOT NULL,
    [CURRUSER] [char] (8) NOT NULL,
    [MODIFYTIME] [char] (8) NOT NULL,
    [FORMSETID] [char] (8) NOT NULL,
    [TRANCODE] [char] (2) NOT NULL,
    [STATUSCODE] [char] (2) NOT NULL,
    [FROMUSER] [char] (8) NOT NULL,
    [FROMTIME] [char] (8) NOT NULL,
    [TOUSER] [char] (8) NOT NULL,
    [TOTIME] [char] (8) NOT NULL,
    [DESC] [char] (30) NOT NULL,
    [INUSE] [char] (1) NOT NULL,
    [ARCKEY] [char] (18) NULL,
    [APPDATA] [char] (150) NULL,
    [TRNNAME] [char] (62) NULL
) ON [PRIMARY]

GO

CREATE TABLE [OW0006_ARCHIVE] (
    [ARCKEY] [char] (18) COLLATE SQL_Latin1_General_CP1_CI_AS NULL,
    [SEQ_NUM] [char] (5) COLLATE SQL_Latin1_General_CP1_CI_AS NULL,
    [CONT_FLAG] [char] (1) COLLATE SQL_Latin1_General_CP1_CI_AS NULL,
    [TOTAL_SIZE] [int] NULL,
    [CARDATA] [image] NULL
) ON [PRIMARY] TEXTIMAGE_ON [PRIMARY]
GO
CREATE INDEX [OW0006_ARCHIVEARCKEY] ON [OW0006_ARCHIVE] ([ARCKEY], [SEQ_NUM])
ON [PRIMARY]
GO
CREATE INDEX [OW0006_ARCHIVESEQ_NUM] ON [OW0006_ARCHIVE] ([SEQ_NUM]) ON
[PRIMARY]
```

```
GO
CREATE INDEX [OW0006_ARCHIVECAR_KEY] ON [OW0006_ARCHIVE] ([ARCKEY]) ON
[PRIMARY]
GO

/***** Object: Table [dbo].[OW0006_CATALOG]    Script Date: 10/22/2009
12:32:08 *****/
SET ANSI_NULLS ON
GO
SET QUOTED_IDENTIFIER ON
GO
SET ANSI_PADDING ON
GO
CREATE TABLE [dbo].[OW0006_CATALOG] (
    [CATALOGID] [char] (10) NULL,
    [CARFILE] [char] (8) NULL,
    [MEDIAID] [char] (11) NULL,
    [STATUS] [char] (1) NULL
) ON [PRIMARY]

GO

/***** Object: Table [dbo].[OW0006_WIP]    Script Date: 10/22/2009 12:33:25
*****/
SET ANSI_NULLS ON
GO
SET QUOTED_IDENTIFIER ON
GO
SET ANSI_PADDING ON
GO
CREATE TABLE [dbo].[OW0006_WIP] (
    [UNIQUE_ID] [char] (32) NULL,
    [KEY1] [char] (62) NULL,
    [KEY2] [char] (62) NULL,
    [KEYID] [char] (20) NULL,
    [RECTYPE] [char] (3) NULL,
    [CREATETIME] [char] (8) NULL,
    [ORIGUSER] [char] (64) NULL,
    [CURRUSER] [char] (64) NULL,
    [MODIFYTIME] [char] (8) NULL,
    [FORMSETID] [char] (32) NULL,
    [TRANCODE] [char] (2) NULL,
    [STATUSCODE] [char] (2) NULL,
    [FROMUSER] [char] (64) NULL,
    [FROMTIME] [char] (8) NULL,
    [TOUSER] [char] (64) NULL,
    [TOTIME] [char] (8) NULL,
    [DESC] [char] (30) NULL,
    [INUSE] [char] (1) NULL,
    [ARCKEY] [char] (18) NULL,
    [APPDATA] [char] (150) NULL,
    [GUIDKEY] [char] (32) NULL,
    [TRNNAME] [char] (62) NULL,
    [LOCID] [char] (30) NULL,
    [SUBLOCID] [char] (30) NULL,
    [JURISDICTN] [char] (30) NULL
) ON [PRIMARY]
```



```
GO
/***** Object: Table [dbo].[OW0006_WIPDATA]    Script Date: 10/22/2009
12:33:37 *****/
SET ANSI_NULLS ON
GO
SET QUOTED_IDENTIFIER ON
GO
SET ANSI_PADDING ON
GO
CREATE TABLE [dbo].[OW0006_WIPDATA] (
    [FORMSETID] [char] (32) NOT NULL,
    [SEQ_NUM] [char] (5) NOT NULL,
    [CONT_FLAG] [char] (1) NOT NULL,
    [TOTAL_SIZE] [int] NULL,
    [CARDATA] [image] NULL
) ON [PRIMARY]

GO
SET ANSI_PADDING OFF
```

EXAMPLE WIPDATA SQL SCRIPT

Here is an example WIPDATA.SQL script:

```
USE [master]
GO
/***** Object:  Table [dbo].[OW0006_WIPDATA]      Script Date: 10/22/2009
12:33:37 *****/
SET ANSI_NULLS ON
GO
SET QUOTED_IDENTIFIER ON
GO
SET ANSI_PADDING ON
GO
CREATE TABLE [dbo].[OW0006_WIPDATA] (
    [FORMSETID] [char] (32) NOT NULL,
    [SEQ_NUM] [char] (5) NOT NULL,
    [CONT_FLAG] [char] (1) NOT NULL,
    [TOTAL_SIZE] [int] NULL,
    [CARDATA] [image] NULL
) ON [PRIMARY]

GO
SET ANSI_PADDING OFF
```

EXAMPLE USERDB SQL SCRIPT

```
CREATE TABLE iAuto (user_key int NULL,
                     CARRIER varchar(50) NULL,
                     COMPANY varchar(50) NULL,
                     DATE1 varchar(100) NULL,
                     LOB varchar(50) NULL,
                     POLICY_NBR varchar(50) NULL)

CREATE TABLE iDefault (user_key int NULL)

CREATE TABLE iSession (session_id varchar(50) NULL,
                        state_id varbinary(MAX) NULL)

CREATE TABLE iSystem (user_key int NULL,
                       Endorse_Code varchar(2) NULL,
                       Renew_Code varchar(2) NULL)

CREATE TABLE Lib_Config (office_id int NULL,
                          profile_id int NULL,
                          library varchar(50) NULL,
                          config varchar(50) NULL,
                          profile_type varchar(1) NULL)

CREATE TABLE Location (location_id int NULL, location_name varchar(50) NULL)

CREATE TABLE Master (user_key int NOT NULL,
                      id varchar(20) NULL,
                      name varchar(50) NULL,
                      password varchar(8) NULL,
                      e_mail varchar(50) NULL,
                      security varchar(50) NULL,
                      office_id int NULL,
                      location_id int NULL,
                      transactions int NULL)

CREATE TABLE Office (office_id int NULL, office_name varchar(50) NULL)

CREATE TABLE Profile (profile_id int NULL, group1 varchar(50) NULL,
                      group2 varchar(50) NULL)
```

