

Oracle® Documaker Desktop

**Documaker Desktop
Installation Guide**

version 12.0

Part number: E17553-01

December 2011

Copyright © 2009, 2011, Oracle and/or its affiliates. All rights reserved.

This software and related documentation are provided under a license agreement containing restrictions on use and disclosure and are protected by intellectual property laws. Except as expressly permitted in your license agreement or allowed by law, you may not use, copy, reproduce, translate, broadcast, modify, license, transmit, distribute, exhibit, perform, publish, or display any part, in any form, or by any means. Reverse engineering, disassembly, or decompilation of this software, unless required by law for interoperability, is prohibited.

The information contained herein is subject to change without notice and is not warranted to be error-free. If you find any errors, please report them to us in writing.

If this software or related documentation is delivered to the U.S. Government or anyone licensing it on behalf of the U.S. Government, the following notice is applicable:

U.S. GOVERNMENT RIGHTS

Programs, software, databases, and related documentation and technical data delivered to U.S. Government customers are “commercial computer software” or “commercial technical data” pursuant to the applicable Federal Acquisition Regulation and agency-specific supplemental regulations. As such, the use, duplication, disclosure, modification, and adaptation shall be subject to the restrictions and license terms set forth in the applicable Government contract, and, to the extent applicable by the terms of the Government contract, the additional rights set forth in FAR 52.227-19, Commercial Computer Software License (December 2007). Oracle USA, Inc., 500 Oracle Parkway, Redwood City, CA 94065.

This software is developed for general use in a variety of information management applications. It is not developed or intended for use in any inherently dangerous applications, including applications which may create a risk of personal injury. If you use this software in dangerous applications, then you shall be responsible to take all appropriate fail-safe, backup, redundancy, and other measures to ensure the safe use of this software. Oracle Corporation and its affiliates disclaim any liability for any damages caused by use of this software in dangerous applications.

Oracle is a registered trademark of Oracle Corporation and/or its affiliates. Other names may be trademarks of their respective owners.

This software and documentation may provide access to or information on content, products, and services from third parties. Oracle Corporation and its affiliates are not responsible for and expressly disclaim all warranties of any kind with respect to third-party content, products, and services. Oracle Corporation and its affiliates will not be responsible for any loss, costs, or damages incurred due to your access to or use of third-party content, products, or services.

Where an Oracle offering includes third party content or software, we may be required to include related notices. For information on third party notices and the software and related documentation in connection with which they need to be included, please contact the attorney from the Development and Strategic Initiatives Legal Group that supports the development team for the Oracle offering. Contact information can be found on the Attorney Contact Chart.

The information contained in this document is for informational sharing purposes only and should be considered in your capacity as a customer advisory board member or pursuant to your beta trial agreement only. It is not a commitment to deliver any material, code, or functionality, and should not be relied upon in making purchasing decisions. The development, release, and timing of any features or functionality described in this document remains at the sole discretion of Oracle.

This document in any form, software or printed matter, contains proprietary information that is the exclusive property of Oracle. Your access to and use of this confidential material is subject to the terms and conditions of your Oracle Software License and Service Agreement, which has been executed and with which you agree to comply. This document and information contained herein may not be disclosed, copied, reproduced, or distributed to anyone outside Oracle without prior written consent of Oracle. This document is not part of your license agreement nor can it be incorporated into any contractual agreement with Oracle or its subsidiaries or affiliates.

THIRD PARTY SOFTWARE NOTICES

This product includes software developed by Apache Software Foundation (<http://www.apache.org/>).

THIS SOFTWARE IS PROVIDED "AS IS" AND ANY EXPRESS OR IMPLIED WARRANTIES, INCLUDING, BUT NOT LIMITED TO, THE IMPLIED WARRANTIES OF MERCHANTABILITY AND FITNESS FOR A PARTICULAR PURPOSE ARE DISCLAIMED. IN NO EVENT SHALL THE AUTHOR OR CONTRIBUTORS BE LIABLE FOR ANY DIRECT, INDIRECT, INCIDENTAL, SPECIAL, EXEMPLARY, OR CONSEQUENTIAL DAMAGES (INCLUDING, BUT NOT LIMITED TO, PROCUREMENT OF SUBSTITUTE GOODS OR SERVICES; LOSS OF USE, DATA, OR PROFITS; OR BUSINESS INTERRUPTION) HOWEVER CAUSED AND ON ANY THEORY OF LIABILITY, WHETHER IN CONTRACT, STRICT LIABILITY, OR TORT (INCLUDING NEGLIGENCE OR OTHERWISE) ARISING IN ANY WAY OUT OF THE USE OF THIS SOFTWARE, EVEN IF ADVISED OF THE POSSIBILITY OF SUCH DAMAGE.

Copyright © 2000-2009 The Apache Software Foundation. All rights reserved.

This product includes software distributed via the Berkeley Software Distribution (BSD) and licensed for binary distribution under the Generic BSD license.

THIS SOFTWARE IS PROVIDED BY THE COPYRIGHT HOLDERS AND CONTRIBUTORS "AS IS" AND ANY EXPRESS OR IMPLIED WARRANTIES, INCLUDING, BUT NOT LIMITED TO, THE IMPLIED WARRANTIES OF MERCHANTABILITY AND FITNESS FOR A PARTICULAR PURPOSE ARE DISCLAIMED. IN NO EVENT SHALL THE COPYRIGHT OWNER OR CONTRIBUTORS BE LIABLE FOR ANY DIRECT, INDIRECT, INCIDENTAL, SPECIAL, EXEMPLARY, OR CONSEQUENTIAL DAMAGES (INCLUDING, BUT NOT LIMITED TO, PROCUREMENT OF SUBSTITUTE GOODS OR SERVICES; LOSS OF USE, DATA, OR PROFITS; OR BUSINESS INTERRUPTION) HOWEVER CAUSED AND ON ANY THEORY OF LIABILITY, WHETHER IN CONTRACT, STRICT LIABILITY, OR TORT (INCLUDING NEGLIGENCE OR OTHERWISE) ARISING IN ANY WAY OUT OF THE USE OF THIS SOFTWARE, EVEN IF ADVISED OF THE POSSIBILITY OF SUCH DAMAGE.

Copyright © 2009, Berkeley Software Distribution (BSD)

This product includes software developed by the JDOM Project (<http://www.jdom.org/>).

THIS SOFTWARE IS PROVIDED "AS IS" AND ANY EXPRESSED OR IMPLIED WARRANTIES, INCLUDING, BUT NOT LIMITED TO, THE IMPLIED WARRANTIES OF MERCHANTABILITY AND FITNESS FOR A PARTICULAR PURPOSE ARE DISCLAIMED. IN NO EVENT SHALL THE JDOM AUTHORS OR THE PROJECT CONTRIBUTORS BE LIABLE FOR ANY DIRECT, INDIRECT, INCIDENTAL, SPECIAL, EXEMPLARY, OR CONSEQUENTIAL DAMAGES (INCLUDING, BUT NOT LIMITED TO, PROCUREMENT OF SUBSTITUTE GOODS OR SERVICES; LOSS OF USE, DATA, OR PROFITS; OR BUSINESS INTERRUPTION) HOWEVER CAUSED AND ON ANY THEORY OF LIABILITY, WHETHER IN CONTRACT, STRICT LIABILITY, OR TORT (INCLUDING NEGLIGENCE OR OTHERWISE) ARISING IN ANY WAY OUT OF THE USE OF THIS SOFTWARE, EVEN IF ADVISED OF THE POSSIBILITY OF SUCH DAMAGE.

Copyright (C) 2000-2004 Jason Hunter & Brett McLaughlin. All rights reserved.

This product includes software developed by the Massachusetts Institute of Technology (MIT).

THE SOFTWARE IS PROVIDED "AS IS", WITHOUT WARRANTY OF ANY KIND, EXPRESS OR IMPLIED, INCLUDING BUT NOT LIMITED TO THE WARRANTIES OF MERCHANTABILITY, FITNESS FOR A PARTICULAR PURPOSE AND NONINFRINGEMENT. IN NO EVENT SHALL THE AUTHORS OR COPYRIGHT HOLDERS BE LIABLE FOR ANY CLAIM, DAMAGES OR OTHER LIABILITY, WHETHER IN AN ACTION OF CONTRACT, TORT OR OTHERWISE, ARISING FROM, OUT OF OR IN CONNECTION WITH THE SOFTWARE OR THE USE OR OTHER DEALINGS IN THE SOFTWARE.

Copyright © 2009 MIT

This product includes software developed by Jean-loup Gailly and Mark Adler. This software is provided 'as-is', without any express or implied warranty. In no event will the authors be held liable for any damages arising from the use of this software.

Copyright (c) 1995-2005 Jean-loup Gailly and Mark Adler

This software is based in part on the work of the Independent JPEG Group (<http://www.ijg.org/>).

This product includes software developed by the Dojo Foundation (<http://dojotoolkit.org>).

THIS SOFTWARE IS PROVIDED BY THE COPYRIGHT HOLDERS AND CONTRIBUTORS "AS IS" AND ANY EXPRESS OR IMPLIED WARRANTIES, INCLUDING, BUT NOT LIMITED TO, THE IMPLIED WARRANTIES OF MERCHANTABILITY AND FITNESS FOR A PARTICULAR PURPOSE ARE DISCLAIMED. IN NO EVENT SHALL THE COPYRIGHT OWNER OR CONTRIBUTORS BE LIABLE FOR ANY DIRECT, INDIRECT, INCIDENTAL, SPECIAL, EXEMPLARY, OR CONSEQUENTIAL DAMAGES (INCLUDING, BUT NOT LIMITED TO, PROCUREMENT OF SUBSTITUTE GOODS OR SERVICES; LOSS OF USE, DATA, OR PROFITS; OR BUSINESS INTERRUPTION) HOWEVER CAUSED AND ON ANY THEORY OF LIABILITY, WHETHER IN CONTRACT, STRICT LIABILITY, OR TORT (INCLUDING NEGLIGENCE OR OTHERWISE) ARISING IN ANY WAY OUT OF THE USE OF THIS SOFTWARE, EVEN IF ADVISED OF THE POSSIBILITY OF SUCH DAMAGE.

Copyright (c) 2005-2009, The Dojo Foundation. All rights reserved.

This product includes software developed by W3C.

Copyright © 2009 World Wide Web Consortium, (Massachusetts Institute of Technology, Institut National de Recherche en Informatique et en Automatique, Keio University). All Rights Reserved. (<http://www.w3.org/Consortium/Legal/>)

This product includes software developed by Mathew R. Miller (<http://www.bluecreststudios.com>).

Copyright (c) 1999-2002 ComputerSmarts. All rights reserved.

This product includes software developed by Shaun Wilde and distributed via Code Project Open License (<http://www.codeproject.com>).

THIS WORK IS PROVIDED "AS IS", "WHERE IS" AND "AS AVAILABLE", WITHOUT ANY EXPRESS OR IMPLIED WARRANTIES OR CONDITIONS OR GUARANTEES. YOU, THE USER, ASSUME ALL RISK IN ITS USE, INCLUDING COPYRIGHT INFRINGEMENT, PATENT INFRINGEMENT, SUITABILITY, ETC. AUTHOR EXPRESSLY DISCLAIMS ALL EXPRESS, IMPLIED OR STATUTORY WARRANTIES OR CONDITIONS, INCLUDING WITHOUT LIMITATION, WARRANTIES OR CONDITIONS OF MERCHANTABILITY, MERCHANTABLE QUALITY OR FITNESS FOR A PARTICULAR PURPOSE, OR ANY WARRANTY OF TITLE OR NON-INFRINGEMENT, OR THAT THE WORK (OR ANY PORTION THEREOF) IS CORRECT, USEFUL, BUG-FREE OR FREE OF VIRUSES. YOU MUST PASS THIS DISCLAIMER ON WHENEVER YOU DISTRIBUTE THE WORK OR DERIVATIVE WORKS.

This product includes software developed by Chris Maunder and distributed via Code Project Open License (<http://www.codeproject.com>).

THIS WORK IS PROVIDED "AS IS", "WHERE IS" AND "AS AVAILABLE", WITHOUT ANY EXPRESS OR IMPLIED WARRANTIES OR CONDITIONS OR GUARANTEES. YOU, THE USER, ASSUME ALL RISK IN ITS USE, INCLUDING COPYRIGHT INFRINGEMENT, PATENT INFRINGEMENT, SUITABILITY, ETC. AUTHOR EXPRESSLY DISCLAIMS ALL EXPRESS, IMPLIED OR STATUTORY WARRANTIES OR CONDITIONS, INCLUDING WITHOUT LIMITATION, WARRANTIES OR CONDITIONS OF MERCHANTABILITY, MERCHANTABLE QUALITY OR FITNESS FOR A PARTICULAR PURPOSE, OR ANY WARRANTY OF TITLE OR NON-INFRINGEMENT, OR THAT THE WORK (OR ANY PORTION THEREOF) IS CORRECT, USEFUL, BUG-FREE OR FREE OF VIRUSES. YOU MUST PASS THIS DISCLAIMER ON WHENEVER YOU DISTRIBUTE THE WORK OR DERIVATIVE WORKS.

This product includes software developed by PJ Arends and distributed via Code Project Open License (<http://www.codeproject.com>).

THIS WORK IS PROVIDED "AS IS", "WHERE IS" AND "AS AVAILABLE", WITHOUT ANY EXPRESS OR IMPLIED WARRANTIES OR CONDITIONS OR GUARANTEES. YOU, THE USER, ASSUME ALL RISK IN ITS USE, INCLUDING COPYRIGHT INFRINGEMENT, PATENT INFRINGEMENT, SUITABILITY, ETC. AUTHOR EXPRESSLY DISCLAIMS ALL EXPRESS, IMPLIED OR STATUTORY WARRANTIES OR CONDITIONS, INCLUDING WITHOUT LIMITATION, WARRANTIES OR CONDITIONS OF MERCHANTABILITY, MERCHANTABLE QUALITY OR FITNESS FOR A PARTICULAR PURPOSE, OR ANY WARRANTY OF TITLE OR NON-INFRINGEMENT, OR THAT THE WORK (OR ANY PORTION THEREOF) IS CORRECT, USEFUL, BUG-FREE OR FREE OF VIRUSES. YOU MUST PASS THIS DISCLAIMER ON WHENEVER YOU DISTRIBUTE THE WORK OR DERIVATIVE WORKS.

This product includes software developed by Erwin Tratar. This source code and all accompanying material is copyright (c) 1998-1999 Erwin Tratar. All rights reserved.

THIS SOFTWARE IS PROVIDED "AS IS" WITHOUT EXPRESS OR IMPLIED WARRANTY. USE IT AT YOUR OWN RISK! THE AUTHOR ACCEPTS NO LIABILITY FOR ANY DAMAGE/LOSS OF BUSINESS THAT THIS PRODUCT MAY CAUSE.

This product includes software developed by Sam Leffler of Silicon Graphics.

THE SOFTWARE IS PROVIDED "AS-IS" AND WITHOUT WARRANTY OF ANY KIND, EXPRESS, IMPLIED OR OTHERWISE, INCLUDING WITHOUT LIMITATION, ANY WARRANTY OF MERCHANTABILITY OR FITNESS FOR A PARTICULAR PURPOSE.

IN NO EVENT SHALL SAM LEFFLER OR SILICON GRAPHICS BE LIABLE FOR ANY SPECIAL, INCIDENTAL, INDIRECT OR CONSEQUENTIAL DAMAGES OF ANY KIND, OR ANY DAMAGES WHATSOEVER RESULTING FROM LOSS OF USE, DATA OR PROFITS, WHETHER OR NOT ADVISED OF THE POSSIBILITY OF DAMAGE, AND ON ANY THEORY OF LIABILITY, ARISING OUT OF OR IN CONNECTION WITH THE USE OR PERFORMANCE OF THIS SOFTWARE

Copyright (c) 1988-1997 Sam Leffler

Copyright (c) 1991-1997 Silicon Graphics, Inc.

This product includes software developed by Guy Eric Schalnat, Andreas Dilger, Glenn Randers-Pehrson (current maintainer), and others. (<http://www.libpng.org>)

The PNG Reference Library is supplied "AS IS". The Contributing Authors and Group 42, Inc. disclaim all warranties, expressed or implied, including, without limitation, the warranties of merchantability and of fitness for any purpose. The Contributing Authors and Group 42, Inc. assume no liability for direct, indirect, incidental, special, exemplary, or consequential damages, which may result from the use of the PNG Reference Library, even if advised of the possibility of such damage.

This product includes software components distributed by the Cryptix Foundation.

THIS SOFTWARE IS PROVIDED BY THE CRYPTIX FOUNDATION LIMITED AND CONTRIBUTORS "AS IS" AND ANY EXPRESS OR IMPLIED WARRANTIES, INCLUDING, BUT NOT LIMITED TO, THE IMPLIED WARRANTIES OF MERCHANTABILITY AND FITNESS FOR A PARTICULAR PURPOSE ARE DISCLAIMED. IN NO EVENT SHALL THE CRYPTIX FOUNDATION LIMITED OR CONTRIBUTORS BE LIABLE FOR ANY DIRECT, INDIRECT, INCIDENTAL, SPECIAL, EXEMPLARY, OR CONSEQUENTIAL DAMAGES (INCLUDING, BUT NOT LIMITED TO, PROCUREMENT OF SUBSTITUTE GOODS OR SERVICES; LOSS OF USE, DATA, OR PROFITS; OR BUSINESS INTERRUPTION) HOWEVER CAUSED AND ON ANY THEORY OF LIABILITY, WHETHER IN CONTRACT, STRICT LIABILITY, OR TORT (INCLUDING NEGLIGENCE OR OTHERWISE) ARISING IN ANY WAY OUT OF THE USE OF THIS SOFTWARE, EVEN IF ADVISED OF THE POSSIBILITY OF SUCH DAMAGE

Copyright © 1995-2005 The Cryptix Foundation Limited. All rights reserved.

This product includes software components distributed by Sun Microsystems.

This software is provided "AS IS," without a warranty of any kind. ALLEXPRESS OR IMPLIED CONDITIONS, REPRESENTATIONS AND WARRANTIES, INCLUDING ANY IMPLIED WARRANTY OF MERCHANTABILITY, FITNESS FOR A PARTICULAR PURPOSE OR NON-INFRINGEMENT, ARE HEREBY EXCLUDED. SUN AND ITS LICENSORS SHALL NOT BE LIABLE FOR ANY DAMAGES SUFFERED BY LICENSEE AS A RESULT OF USING, MODIFYING OR DISTRIBUTING THE SOFTWARE OR ITS DERIVATIVES. IN NO EVENT WILL SUN OR ITS LICENSORS BE LIABLE FOR ANY LOST REVENUE, PROFIT OR DATA, OR FOR DIRECT, INDIRECT, SPECIAL, CONSEQUENTIAL, INCIDENTAL OR PUNITIVE DAMAGES, HOWEVER CAUSED AND REGARDLESS OF THE THEORY OF LIABILITY, ARISING OUT OF THE USE OF OR INABILITY TO USE SOFTWARE, EVEN IF SUN HAS BEEN ADVISED OF THE POSSIBILITY OF SUCH DAMAGES.

Copyright (c) 1998 Sun Microsystems, Inc. All Rights Reserved.

This product includes software components distributed by Dennis M. Sosnoski.

THIS SOFTWARE IS PROVIDED BY THE COPYRIGHT HOLDERS AND CONTRIBUTORS "AS IS" AND ANY EXPRESS OR IMPLIED WARRANTIES, INCLUDING, BUT NOT LIMITED TO, THE IMPLIED WARRANTIES OF MERCHANTABILITY AND FITNESS FOR A PARTICULAR PURPOSE ARE DISCLAIMED. IN NO EVENT SHALL THE COPYRIGHT OWNER OR CONTRIBUTORS BE LIABLE FOR ANY DIRECT, INDIRECT, INCIDENTAL, SPECIAL, EXEMPLARY, OR CONSEQUENTIAL DAMAGES (INCLUDING, BUT NOT LIMITED TO, PROCUREMENT OF SUBSTITUTE GOODS OR SERVICES; LOSS OF USE, DATA, OR PROFITS; OR BUSINESS INTERRUPTION) HOWEVER CAUSED AND ON ANY THEORY OF LIABILITY, WHETHER IN CONTRACT, STRICT LIABILITY, OR TORT (INCLUDING NEGLIGENCE OR OTHERWISE) ARISING IN ANY WAY OUT OF THE USE OF THIS SOFTWARE, EVEN IF ADVISED OF THE POSSIBILITY OF SUCH DAMAGE.

Copyright © 2003-2007 Dennis M. Sosnoski. All Rights Reserved

It also includes materials licensed under Apache 1.1 and the following XPP3 license

THIS SOFTWARE IS PROVIDED "AS IS" AND ANY EXPRESSED OR IMPLIED WARRANTIES, INCLUDING, BUT NOT LIMITED TO, THE IMPLIED WARRANTIES OF MERCHANTABILITY AND FITNESS FOR A PARTICULAR PURPOSE ARE DISCLAIMED. IN NO EVENT SHALL THE COPYRIGHT OWNER OR CONTRIBUTORS BE LIABLE FOR ANY DIRECT, INDIRECT, INCIDENTAL, SPECIAL, EXEMPLARY, OR CONSEQUENTIAL DAMAGES (INCLUDING, BUT NOT LIMITED TO, PROCUREMENT OF SUBSTITUTE GOODS OR SERVICES; LOSS OF USE, DATA, OR PROFITS; OR BUSINESS INTERRUPTION) HOWEVER CAUSED AND ON ANY THEORY OF LIABILITY, WHETHER IN CONTRACT, STRICT LIABILITY, OR TORT (INCLUDING NEGLIGENCE OR OTHERWISE) ARISING IN ANY WAY OUT OF THE USE OF THIS SOFTWARE, EVEN IF ADVISED OF THE POSSIBILITY OF SUCH DAMAGE.

Copyright © 2002 Extreme! Lab, Indiana University. All Rights Reserved

This product includes software components distributed by CodeProject. This software contains material that is © 1994-2005 The Ultimate Toolbox, all rights reserved.

This product includes software components distributed by Geir Landro.

Copyright © 2001-2003 Geir Landro (drop@destroydrop.com) JavaScript Tree - [www.destroydrop.com/hjavadscripts/tree/version 0.96](http://www.destroydrop.com/hjavadscripts/tree/version0.96)

This product includes software components distributed by the Hypersonic SQL Group.

THIS SOFTWARE IS PROVIDED BY THE COPYRIGHT HOLDERS AND CONTRIBUTORS "AS IS" AND ANY EXPRESS OR IMPLIED WARRANTIES, INCLUDING, BUT NOT LIMITED TO, THE IMPLIED WARRANTIES OF MERCHANTABILITY AND FITNESS FOR A PARTICULAR PURPOSE ARE DISCLAIMED. IN NO EVENT SHALL THE COPYRIGHT OWNER OR CONTRIBUTORS BE LIABLE FOR ANY DIRECT, INDIRECT, INCIDENTAL, SPECIAL, EXEMPLARY, OR CONSEQUENTIAL DAMAGES (INCLUDING, BUT NOT LIMITED TO, PROCUREMENT OF SUBSTITUTE GOODS OR SERVICES; LOSS OF USE, DATA, OR PROFITS; OR BUSINESS INTERRUPTION) HOWEVER CAUSED AND ON ANY THEORY OF LIABILITY, WHETHER IN CONTRACT, STRICT LIABILITY, OR TORT (INCLUDING NEGLIGENCE OR OTHERWISE) ARISING IN ANY WAY OUT OF THE USE OF THIS SOFTWARE, EVEN IF ADVISED OF THE POSSIBILITY OF SUCH DAMAGE

Copyright © 1995-2000 by the Hypersonic SQL Group. All Rights Reserved

This product includes software components distributed by the International Business Machines Corporation and others.

THE SOFTWARE IS PROVIDED "AS IS", WITHOUT WARRANTY OF ANY KIND, EXPRESS OR IMPLIED, INCLUDING BUT NOT LIMITED TO THE WARRANTIES OF MERCHANTABILITY, FITNESS FOR A PARTICULAR PURPOSE AND NONINFRINGEMENT. IN NO EVENT SHALL THE AUTHORS OR COPYRIGHT HOLDERS BE LIABLE FOR ANY CLAIM, DAMAGES OR OTHER LIABILITY, WHETHER IN AN ACTION OF CONTRACT, TORT OR OTHERWISE, ARISING FROM, OUT OF OR IN CONNECTION WITH THE SOFTWARE OR THE USE OR OTHER DEALINGS IN THE SOFTWARE.

Copyright (c) 1995-2009 International Business Machines Corporation and others. All rights reserved.

This product includes software components distributed by the University of Coimbra.

University of Coimbra distributes this software in the hope that it will be useful but DISCLAIMS ALL WARRANTIES WITH REGARD TO IT, including all implied warranties of MERCHANTABILITY or FITNESS FOR A PARTICULAR PURPOSE. In no event shall University of Coimbra be liable for any special, indirect or consequential damages (or any damages whatsoever) resulting from loss of use, data or profits, whether in an action of contract, negligence or other tortious action, arising out of or in connection with the use or performance of this software.

Copyright (c) 2000 University of Coimbra, Portugal. All Rights Reserved.

This product includes software components distributed by Steve Souza.

THIS SOFTWARE IS PROVIDED BY THE AUTHOR AND CONTRIBUTORS "AS IS" AND ANY EXPRESS OR IMPLIED WARRANTIES, INCLUDING, BUT NOT LIMITED TO, THE IMPLIED WARRANTIES OF MERCHANTABILITY AND FITNESS FOR A PARTICULAR PURPOSE ARE DISCLAIMED. IN NO EVENT SHALL THE COPYRIGHT OWNER OR CONTRIBUTORS BE LIABLE FOR ANY DIRECT, INDIRECT, INCIDENTAL, SPECIAL, EXEMPLARY, OR CONSEQUENTIAL DAMAGES (INCLUDING, BUT NOT LIMITED TO, PROCUREMENT OF SUBSTITUTE GOODS OR SERVICES; LOSS OF USE, DATA, OR PROFITS; OR BUSINESS INTERRUPTION) HOWEVER CAUSED AND ON ANY THEORY OF LIABILITY, WHETHER IN CONTRACT, STRICT LIABILITY, OR TORT (INCLUDING NEGLIGENCE OR OTHERWISE) ARISING IN ANY WAY OUT OF THE USE OF THIS SOFTWARE, EVEN IF ADVISED OF THE POSSIBILITY OF SUCH DAMAGE.

Copyright © 2002, Steve Souza (admin@jamonapi.com). All Rights Reserved.

This product includes software developed by the OpenSymphony Group (<http://www.opensymphony.com/>.)"

Copyright © 2001-2004 The OpenSymphony Group. All Rights Reserved.

PANTONE (R) Colors displayed in the software application or in the user documentation may not match PANTONE-identified standards. Consult current PANTONE Color Publications for accurate color. PANTONE(R) and other Pantone LLC trademarks are the property of Pantone LLC. (C) Pantone LLC, 2011.

Pantone LLC is the copyright owner of color data and/or software which are licensed to Oracle to distribute for use only in combination with Oracle Documaker. PANTONE Color Data and/or Software shall not be copied onto another disk or into memory unless part of the execution of Oracle Documaker.

CONTENTS

Preface

- xi Audience
- xii Documentation Accessibility
 - xii Accessibility of Links to External Web Sites in Documentation
 - xii TTY Access to Oracle Support Services
- xii Related Documents
- xii Conventions

Chapter 1: Introduction

2 System Requirements

- 4 Documaker Enterprise Edition Requirements
- 7 Documaker Standard Edition Requirements
 - 7 On Windows
 - 8 On z/OS (OS/390)
 - 9 On UNIX Systems
- 11 Docupresentation Requirements
 - 13 Web Server
- 14 iPPS Requirements
- 16 EWPS Requirements
- 20 Documaker Web Services Requirements
- 21 Documaker Desktop Requirements
 - 21 On Windows

22

Chapter 2: Installing the System

24 System Overview

25 Downloading the Software

28 Installing the System

- 29 Re-installing the System

30 Downloading the Documentation

32 Downloading Patches

36 Requirements

37 Installation

37 Installing the Required Dependencies

38 Starting the Installation

41 – Index

Preface

Oracle Documaker Desktop is the market-leading policy issuance solution for managing general agents (MGAs), excess and surplus (E&S), and specialty insurance carriers in North America. It is an adaptive enterprise document automation solution that provides efficient, cost-effective policy creation, presentment, printing archival, retrieval, and web-enabling capabilities.

Oracle Documaker Desktop can help you dramatically improve the time required to write new business while handling more volume with existing staff. Oracle Documaker Desktop can be easily integrated with third-party and home-grown legacy systems, including accounting, agency management, and rating systems. And, with access to a library of pre-approved industry content, such as ISO and ACORD forms, it further accelerates new business.

Oracle Documaker Desktop's intuitive, easy-to-use design tools empower your business users to create documents throughout the insurance value chain, reducing their reliance on IT staff. It handles production of user-defined transactions, such as new policies, quotes, endorsements, cancellations, renewals, personalized correspondence, and other customer communications. It also supports creation of package policies, including multiple lines of business per policy with master declaration and sub declaration pages. Using it, you can efficiently manage policy issuance through work-in-progress (WIP); workflow, assignment, and routing; speed policy creation and accuracy with WYSIWYG form-based data entry; and much more.

AUDIENCE

This document is designed for system supervisors and is intended to help you install and set up these Oracle Documaker Desktop components:

- Oracle Documaker Desktop
- PPS Reporting Tool

DOCUMENTATION ACCESSIBILITY

Accessibility of Links to External Web Sites in Documentation

This documentation may contain links to Web sites of other companies or organizations that Oracle does not own or control. Oracle neither evaluates nor makes any representations regarding the accessibility of these Web sites.

TTY Access to Oracle Support Services

Oracle provides dedicated Text Telephone (TTY) access to Oracle Support Services within the United States of America 24 hours a day, seven days a week. For TTY support, call 800.446.2398.

RELATED DOCUMENTS

For more information, refer to the following Oracle resources:

- Documaker Workstation User Guide
- Documaker Workstation Administration Guide
- Printers Reference
- Using the PPS Reporting Tool

CONVENTIONS

The following text conventions are used in this document:

Convention	Description
bold	Indicates information you enter.
<i>italic</i>	Italic type indicates book titles, emphasis, or placeholder variables for which you supply particular values.
monospace	Monospace type indicates commands, URLs, code in examples, and text that appears on the screen.

Chapter 1

Introduction

This manual provides instructions for installing Oracle Documaker Desktop on computers running Windows, such as Windows XP and Windows Vista.

Note For information on installing the PPS Reporting Tool, see *Installing the PPS Reporting Tool* on page 35.

A summary of the system requirements follows. This includes system requirements for all Oracle Documaker Desktop and Oracle Documaker (both Enterprise and Standard Edition) applications, as these systems are often implemented together.

- *Documaker Desktop Requirements* on page 21
- *Documaker Enterprise Edition Requirements* on page 4
- *Documaker Standard Edition Requirements* on page 7
- *Docupresentation Requirements* on page 11
- *iPPS Requirements* on page 14
- *EWPS Requirements* on page 16
- *Documaker Web Services Requirements* on page 20

SYSTEM REQUIREMENTS

The following Oracle Insurance applications run on a variety of operating systems and hardware platforms. Make sure you have these components before you install the following applications.

Operating systems

The following applications run on a variety of operating systems, principally Windows operating systems such as Windows XP, Windows 2003, Windows Vista, and Windows 7, UNIX/Linux operating systems such as AIX, Solaris, and Linux x86, and z/OS (OS/390). This table shows the various product offerings and the operating systems under which they run.

	Windows+	z/OS	AIX	Linux	Solaris
Oracle Documaker Enterprise Edition (ODEE)					
Document Factory ++	Yes	No	No	Yes	Yes
Documaker Interactive ++	Yes	No	Yes	Yes	Yes
Oracle Documaker Standard Edition (ODSE)					
Documaker Server	Yes	Yes	Yes	Yes	Yes
Documaker Studio	Yes	No	No	No	No
Docupresentation	Yes	No	Yes	Yes	Yes
iPPS +++	Yes	No	No	No	No
EWPS ++	Yes	No	Yes	Yes	Yes
Oracle Documaker Desktop					
Documaker Workstation	Yes	No	No	No	No

+ Includes Windows 2003, Windows XP, Windows Vista, Windows 7, Windows 2003 Server, and Windows 2008 Server. This includes both 32 and 64-bit versions of these operating systems. Be sure to have the latest service packs installed.

++ Runs under any operating system that supports the Java Virtual Machine. ODEE web applications run under WebLogic deployed on Windows or any UNIX platform.

+++ Runs under Microsoft Windows 2003 Server and Windows 2008 Server, both 32 and 64-bit versions.

	Windows+	z/OS	AIX	Linux	Solaris
Printers**					
AFP	Yes	Yes	Yes	Yes	Yes
GDI	Yes	No	No	No	No
HTML	Yes	No	Yes	Yes	Yes
Metacode	Yes	Yes	Yes	Yes	Yes
PCL	Yes	No	Yes	Yes	Yes
PCL 6*	Yes	No	Yes	Yes	Yes
PDF	Yes	Yes	Yes	Yes	Yes
PostScript	Yes	Yes	Yes	Yes	Yes
RTF	Yes	No	Yes	Yes	Yes
VIPP	Yes	Yes	Yes	Yes	Yes
XML**	Yes	Yes	Yes	Yes	Yes

+ Includes Windows 2003, Windows XP, Windows Vista, Windows 7, Windows 2003 Server, and Windows 2008 Server.

* You must have PCL version 6 or higher for Unicode support on PCL-compatible printers. PCL version 6 support became available in Documaker version 10.2.

** XML on Z/OS is EBCDIC, plain text, limited character set support only. There is no ASCII, no ANSI, no UTF-8, and no UTF-16 support.

Networks

The system does not use any specific network calls and is expected to work on any network compatible with Microsoft programs.

Note The network file server you use with Documaker Studio or Documaker Workstation must be a 100% Windows network compatible. Some UNIX systems that offer NFS support are not 100% Windows compatible and some UNIX systems do not honor Windows file locking calls and may not be suitable for use as a file server in a true multi-user environment.

DOCUMAKER ENTERPRISE EDITION REQUIREMENTS

The following operating system and infrastructure software is needed to run Oracle Documaker Enterprise, which consists of Document Factory and Documaker Interactive:

Operating System/Software	Comments
Presentation Tier	
Any operating system that supports WebLogic 11g, version 10.3.4.	This layer hosts the web-based applications. Note: 64-bit Windows and JVM for WebLogic are recommended.
Application Server 1 (logical)	Hosts the WebLogic Admin server, Messaging Middleware and the collection of JMS queues. The Admin server is used to configure the WebLogic domain and monitor resources.
Application Server 2 (logical)	Hosts the Oracle SOA Suite with BPEL, Oracle Business Rules, OPSS, and UMS enabled.
Application Server 3 (logical)	Hosts Documaker Interactive. Note: This server is only need for deployments using Documaker Interactive.
Application Server 4 (logical)	Hosts Documaker Administrator and the Document Factory Dashboard.
An HTTP web server for static content	Hosts the WIP Edit plug-in and can be used to host online help content. Note: This server is only need for deployments using Documaker Interactive.
Application Tier	
Windows 2008 Server (32 or 64-bit) Standard Edition, Solaris 10/Sun OS 5.10 (SPARC), and Oracle Enterprise Linux 5.3 or higher 32-bit JVM is required for Document Factory processing.	This layer runs Documaker Document Factory and Docupresentation services. These 32-bit applications do not require a 64-bit machine. Note: Documaker is a 32-bit application, and requires 32-bit drivers, even when running on a 64-bit machine.
Data Tier	
Any operating system that supports Oracle 11g R2 and the DB Client for Oracle 11g R2.	This layer houses the database tables used to store system configuration and processing records. Unicode must be enabled. Case sensitivity must be enabled. (This is the default). Database connections*
Archive/Enclosure Content (Optional)	
FMW 11.1.1.3.0 or higher Oracle Universal Content Management (UCM) 11.1.1.3.0 or higher	UCM can be used to store attachments or to archive output from Documaker.

*Use this formula to determine the number of database connections you need:

$$500 + (5 \times \text{number of users})$$

WebLogic JDBC connection pools should also be adjusted appropriately.

Clients accessing the web-based applications will need:

- Adobe Acrobat Reader, to preview documents in Documaker Interactive
- One of these web browsers:
 - Microsoft Internet Explorer version 7.0 or higher
 - Mozilla Firefox version 3.6.6 or higher

Note If you are using Internet Explorer version 9.x to view Documaker Enterprise web applications, you must enable Compatibility View.

The browser running the WIP Edit plug-in must be a 32-bit version of either Internet Explorer or Firefox. Your operating system can be a 32- or 64-bit operating system, but the browser must be a 32-bit application.

Minimum hardware requirements

Here is the recommended minimum hardware for the various tiers, on a Windows, Solaris, or Linux operating system:

	Windows	Solaris	Linux
Presentation Tier			
OS	Windows Server 2008 x64	Solaris 10/Sun OS 5.10 (SPARC)	Oracle Enterprise Linux release 5.3
CPU #	Intel® 2 Cores 2.3GHz x64	64-bit machines	
Memory #	4 GB RAM	16 GB RAM	
Hard disk	150 GB		
Application Tier			
OS	Windows Server 2008 x32 or x64	Solaris 10/Sun OS 5.10 (SPARC)	Oracle Enterprise Linux release 5.3
CPU	Intel® 4 Cores 2.3GHz	64-bit machines	
Memory	4 GB RAM	16 GB RAM	
Hard disk	150 GB		
Printer	HP-compatible printers supporting PCL version 5 or Postscript		
Printer memory ***	8 MB RAM		
Data Tier			
OS	Windows Server 2008 x32 or x64	Solaris 10/Sun OS 5.10 (SPARC)	Oracle Enterprise Linux release 5.3

Additional CPU and memory resources required with more interactive users.

* Additional memory improves system performance.

** Depends on the volume of data you must process.

*** Additional memory may be required if printing complicated graphics or using a lot of fonts.

**** The database will carry historical information about all transactions processed, which could require a large amount of space.

	Windows	Solaris	Linux
CPU	Intel® 4 Cores 2.3GHz	64-bit machines	
Memory *	4 GB RAM	16 GB RAM	
Hard disk ****	500 GB		

Additional CPU and memory resources required with more interactive users.

* Additional memory improves system performance.

** Depends on the volume of data you must process.

*** Additional memory may be required if printing complicated graphics or using a lot of fonts.

**** The database will carry historical information about all transactions processed, which could require a large amount of space.

Minimum sandbox platform

Here is the recommended minimum hardware for a sandbox, on a Windows or Solaris operating system:

	Windows	Solaris
OS	Windows Server 2008 x64	Solaris 10/Sun OS 5.10
CPU	Intel® 2 Cores 2.3GHz x64	64-bit machines
Memory	8 GB RAM	16 GB RAM
Hard disk	150 GB	150 GB
Printer	HP-compatible printers supporting PCL version 5 or Postscript	
Printer memory	8 MB RAM	

DOCUMAKER STANDARD EDITION REQUIREMENTS

Your computer must have certain software and hardware components to run the programs that comprise the Documaker system. Depending on your software license, operating environment, and your processing needs, these requirements vary. The following tables outline the minimum hardware used to test Documaker and are included for informational reasons only. You should run the system on a computer configured appropriately for the operating system you use and with the processing power to meet your needs

Note For more specific information on the GenArc program and the additional archive and retrieval capabilities available, refer to the [Documaker Administration Guide](#).

On Windows

When running Documaker Studio, keep in mind:

- You can use Oracle, DB2, and SQL databases with Documaker Studio.
- If you are using Internet Explorer version 9.x on the machine where Documaker Studio is running, turn on Internet Explorer's compatibility view.

This table outlines the minimum hardware used to test the system on a single user Windows XP workstation.

For Windows XP	Our minimum test configuration is
CPU	Intel® Core™ 2 CPU.2.13GHz
Memory*	1.99 GB RAM
Hard disk**	148 GB
Printer	HP-compatible printers supporting PCL version 5
Printer memory***	8 MB RAM

* Additional memory improves system performance.

** Depends on the volume of data you must process

*** Additional memory may be required if printing complicated graphics or using a lot of fonts.

This table outlines the minimum hardware used to test the system on a single user Windows Vista workstation.

For Windows Vista	Our minimum test configuration is
CPU	Intel® Core™ 2 CPU.1.86GHz
Memory*	1022 MB RAM
Hard disk**	75 GB
Printer	HP-compatible printers supporting PCL version 5
Printer memory***	8 MB RAM

* Additional memory improves system performance.

** Depends on the volume of data you must process

*** Additional memory may be required if printing complicated graphics or using a lot of fonts.

On z/OS (OS/390)

Documaker Server runs on the following versions/releases of IBM's operating systems:

- OS/390 version 1.1 to version 2.10
- z/OS version 1.6 and higher

Note Following OS/390 version 2.10, new versions were named z/OS. Documaker runs on OS/390 and z/OS. In this manual, OS/390 and z/OS are referred to as z/OS unless otherwise noted.

No product upgrades are required and no incompatibility problems have been reported when running Documaker on any of these operating system releases.

	Requirements
Hard disk	150 MB
Printer	Any printer which supports IBM AFP, Xerox Metacode, or Adobe PostScript
Runtime library	IBM Language Environment for OS/390 version 2.10 or higher
Compiler	(Only necessary if adding custom code to the system) IBM C/C++ compiler for OS/390 version 2.10 or higher

Note Regardless of the type of computer you run the system on, to print charts on Xerox Metacode printers, you must have a GVG card. To print charts on IBM AFP printers, you must have a GOCA card.

The amount of hard disk space you will need depends mainly on the volume of data you must process. Keep in mind too, that the C/C++ compiler is only required if you plan to write your own custom rules and recompile the source modules provided in the Software Developer's Kit (SDK).

On UNIX Systems

For all UNIX systems, you can use any printer that supports IBM AFP, PCL, PostScript level 2, or Xerox Metacode. For HP printers, you need at least 8mb of memory, more if you are printing complicated graphics or using a lot of fonts. The amount of hard disk space you need depends on the volume of data you process. Keep in mind too, that a compiler is only required if you plan to recompile the system, such as if you customize the source code or use a runtime library other than the one shown for your operating system.

Note For any UNIX installation, first make sure you have the uudecode, uncompress, and awk utilities installed.

On AIX systems

	Requirements
Operating system	AIX version 5.3 or higher
Model*	pSeries - Power RISC
Compiler	(Only necessary if adding custom code to the system) IBM XL C/C++ version 8
Runtime library	C/C++ runtime for AIX version 10.1.0.2 or higher

	Tested on
Model*	pSeries 9116
CPU	8 x 1.6 GHz POWER5+
Memory*	16 GB
Hard disk**	Two 74 GB SCSI and two 140 GB SCSI disks

*Additional memory and a faster CPU is not required, but will improve performance.

** Additional space required for your customized forms

On Linux systems

	Requirements
Operating system	GNU/Linux Distribution Oracle Enterprise Linux (OEL) version 5.3 or higher Kernel 2.6.18-164+
Model	Intel/AMD based systems
Compiler	(Only necessary if you are adding custom code to the system) GNU C/C++ compiler gcc-4.1.2-44, gcc-c++-4.1.2-44
Runtime library	libgcc-4.1.2-44 libstdc++-4.1.2-44
Additional requirements	<ul style="list-style-type: none"> The installer requires the sharutil package for the uudecode applet. Any other utilized third-party software required packages, such as Oracle, DB2, MySQL, and so on.
	Tested on
CPU*	Intel® Core™2 CPU 6600 @ 2.40 GHz
Operating system	Oracle Enterprise Linux (OEL) version 5.3 Oracle VM guest
Memory*	2 GB
Hard disk**	75 GB

*Additional memory and a faster CPU is not required, but will improve performance.
** Additional space required for your customized forms

On Solaris systems

	Requirements
Operating system	Sun Solaris 10/SunOS 5.10 (SPARC based)
Model*	UltraSPARC based
Compiler	(Only necessary if adding custom code to the system) Sun Studio 11 for C/C++ development
Runtime library	Core Solaris 10
	Tested on
Model*	Sun Ultra 45
Operating system	Solaris 10/Sun OS 5.10 SPARC 64-bit
CPU	2 x 1.6 GHz UltraSPARC-IIIi
Memory*	4 GB
Hard disk**	500 GB SCSI disk

*Additional memory and a faster CPU is not required, but will improve performance.
** Additional space required for your customized forms

DOCUPRESENTMENT REQUIREMENTS

Your computer must have certain software and hardware components to run Docupresentation. Depending on your software license and operating environment, these requirements vary.

You can run Docupresentation on the following operating systems:

- Windows
- AIX
- Linux
- Solaris

Note For Docupresentation you must have Java 1.5 or higher.

These tables provide more detailed information on our minimum platform requirements for testing Docupresentation implementations.

On Windows systems

	Tested on
Operating system*	Windows XP
CPU	Intel® Core™ 2 CPU.2.13GHz
Memory	2 GB
Hard disk (RTE)	80 GB
Hard disk (MRL)**	80 GB

* Also tested on Windows 2000 Server and Windows 2003 Server.

** Additional space required for your customized forms

On AIX systems

	Requirements
Operating system	AIX version 5.3 or higher
Model*	pSeries - Power RISC
	(Only necessary if adding custom code to the system)
Compiler	IBM XL C/C++ version 8 C/C++ runtime for AIX version 10.1.0.2 or higher
Runtime library	C Set ++ runtime for AIX version 5.0 or higher

	Tested on
Model*	pSeries 9116
CPU	8 x 1.6 GHz POWER5+
Memory*	16 GB
Hard disk**	Two 74 GB SCSI and two 140 GB SCSI disks

*Additional memory and a faster CPU is not required, but will improve performance.

** Additional space required for your customized forms

On Linux systems

	Requirements
Operating system	GNU/Linux Distribution Oracle Enterprise Linux (OEL) version 5.3 or higher Kernel 2.6.18-164+
Model	Intel/AMD based systems
Compiler	(Only necessary if you are adding custom code to the system) GNU C/C++ compiler gcc-4.1.2-44, gcc-c++-4.1.2-44
Runtime library	libgcc-4.1.2-44 libstdc++-4.1.2-44
Additional requirements	<ul style="list-style-type: none"> The installer requires the sharutil package for the uudecode applet. Any other utilized third-party software required packages, such as Oracle, DB2, MySQL, and so on.

	Tested on
CPU*	Intel® Core™2 CPU 6600 @ 2.40 GHz
Operating system	Oracle Enterprise Linux (OEL) version 5.3 Oracle VM guest
Memory*	2 GB
Hard disk**	75 GB

*Additional memory and a faster CPU is not required, but will improve performance.

** Additional space required for your customized forms

On Solaris systems

	Requirements
Operating system	Sun Solaris 10/SunOS version 5.10 (SPARC based)
Model*	UltraSPARC based
Compiler	(Only necessary if adding custom code to the system) Sun Studio 11 for C/C++ development
Runtime library	Core Solaris version 10

	Tested on
Model*	Sun Ultra 45
Operating system	Solaris 10/Sun OS version 5.10 SPARC 64-bit
CPU	2 x 1.6 GHz UltraSPARC-IIIi
Memory*	4 GB
Hard disk**	500 GB SCSI disk

*Additional memory and a faster CPU is not required, but will improve performance.

** Additional space required for your customized forms

Web Server

This table outlines the web server requirements for each operating system:

Operating system	Web server
Windows	2000 Server or 2003 Server or higher, such as Microsoft Internet Information Server version 4.0 or higher.
AIX	Web server for AIX 5.3, such as IBM's HTTP Server for AIX version 1.3.3.1 or higher with the Java Runtime Environment and/or JDK for AIX, version 1.4.0 or higher.
Linux	Web server for Linux, such as Apache version 1.3.12 or higher or IBM HTTP Server version 1.3.9 or higher.
Solaris	Web server for Sun Solaris version 7 or higher on SPARC, such as Java Web Server 2.0 or Apache version 1.3.9 with the Java Runtime Environment and/or JDK for Solaris, version JRE version 1.4.0 or higher. IBM HTTP Server version 1.3.9 or higher can also be used.

Note Oracle tests DocuPresentation implementations on WebSphere Application Server (WAS) version 6.1.x and Tomcat 6.x Application Server.

iPPS REQUIREMENTS

Your computer must have certain software and hardware components to run iPPS. This table outlines those requirements:

Basic requirements

	Requirements
CPU	Pentium III or higher
Operating systems	Windows XP, Windows 2003 Server, or higher
Memory*	256 MB RAM
Hard disk**	400 MB free
Other components	Keyboard and mouse or compatible pointing device
Monitor	Color SVGA monitor

* Additional memory, while not required, will improve system performance.

** The amount of hard disk space you will need depends mainly on the volume of data you must process.

Client requirements

In addition to the basic requirements, each client should have the following:

- WIP Edit plug-in, version 11.3, patch 05 or higher
- Windows XP Professional or later
- Adobe Acrobat Reader 7.0 or higher
- Microsoft Internet Explorer 6.0 or higher with these Internet security options enabled:
 - Run ActiveX controls and plug-ins
 - Script ActiveX controls safe for scripting
 - Allow cookies that are stored on your computer
 - Allow per-session cookies (not stored)
 - Active Scripting

Server requirements

In addition to the basic and client requirements, the computer you will use as a server should be configured with the following:

- Internet Information Services (IIS) with World Wide Web Server and File Transfer Protocol (FTP) Server
- A database such as Microsoft Access (Access 97 or higher), xBase, or SQL
- Visual Basic runtimes
- Microsoft XML Core Services 4.0 SP2 (msxml4) for iPPS 3.11 and below
- Microsoft XML Core Services 6.0 (msxml6) for iPPS 3.12 and higher
- ADO 2.6 or later

- A static IP address

Web server

For the web server, you should have:

- Minimum Pentium III with 512MB of RAM
- Windows 2003 Server
- Component Services or Microsoft Transaction Server
- Microsoft Visual Basic 6 Runtimes (included/installed with iPPS version 3.1 or higher)
- Microsoft Active Data Objects 2.6 or higher (included/installed with iPPS version 3.1 or higher)
- IBM WebSphere MQ (formerly MQSeries) or Microsoft Message Queue client
- ODBC-compliant database (Oracle, SQL Server, or DB2 recommended for production)
- Microsoft's XML parser:
 - MSXML 6.0 for iPPS version 3.12 and higher
- DocuPresentment version 2.2 or higher

EWPS REQUIREMENTS

The EWPS Java web application deployment supports Java Runtime Environment (JRE) version 1.5 or higher. For best results, use JRE version 1.6. This table shows you the version of Java you need for each supported platform:

For this platform	You need this version of Java
Microsoft Windows (x86-32 and x86-64)	
XP (SP 2) Server 2003 (SP2)	Sun Java version 5 or higher
Linux (x86-32 and x86-64) 32- and 64-bit kernels	
Oracle Enterprise Linux version 5.3 or higher RedHat Enterprise Linux version 5.3 or higher	Sun Java version 5 or higher or IBM Java version 5 or higher
Sun Solaris (SPARC) 32-and 64-bit kernels	
Solaris 10/SunOS version 5.10 or higher)	Sun Java version 5 or higher
IBM AIX 5L pSeries (RISC) 32- and 64-bit kernels	
version 5.3 TL 5200-09	IBM Java version 5 or higher
version 5.3 TL 5300-07	IBM Java version 6 or higher

Web application server

Whether running on Windows, Linux, Solaris, or AIX, you can use either of the following Java Web Application Servers:

- IBM WebSphere AS, version 6.1 or higher
- Tomcat version 5.5 or higher

Note Oracle tests with WebSphere and Tomcat. Other Java application servers should also work.

An EWPS Java web application deployment requires the following version of Docupresentation to process web services requests:

- Docupresentation version 2.2, patch 04 or higher

Message bus systems

EWPS communicates to Docupresentation using a message bus provider such as JMS, WebSphere MQ, or MSMQ. This table shows the possible message bus systems you can use.

For this platform	You can use one of these message busses
Microsoft Windows (x86-32 and x86-64) <ul style="list-style-type: none"> • XP (SP 2) • Server 2003 (SP2) 	HTTP/SOAP(*) MSMQ IBM WebSphere MQ, version 5.3 or higher WebLogic 11g, version 10.3.4 Other JMS providers
Linux (x86-32 and x86-64) ** <ul style="list-style-type: none"> • Oracle Enterprise Linux version 5.3 or higher • RedHat Linux Enterprise Server version 5.3 or higher 	HTTP/SOAP(*) IBM WebSphere MQ, version 5.3 or higher WebLogic 11g, version 10.3.4 Other JMS providers
Sun Solaris (SPARC) <ul style="list-style-type: none"> • Solaris 10/SunOS version 5.10 or higher 	HTTP/SOAP (*) IBM WebSphere MQ, version 5.3 or higher WebLogic 11g, version 10.3.4 Other JMS providers
IBM AIX 5L pSeries (RISC) 32-bit and 64-bit <ul style="list-style-type: none"> • version 5.3 TL 5200-09 • version 5.3 TL 5300-07 	HTTP/SOAP (*) IBM WebSphere MQ, version 5.3 or higher WebLogic 11g, version 10.3.4 Other JMS providers

(*) HTTP is recommended for development systems, not for production use.

(**) Other Linux distributions should work at kernel v2.6.11.4-21 or higher but have not been tested.

Docupresentation, JRE, and Documaker versions

This table shows, for each supported and tested platform, the version of Docupresentation, the corresponding Java Runtime Environment (JRE) for Docupresentation, and the version of Documaker necessary to support EWPS.

For this platform	Docupresentation	JRE	Documaker
Microsoft Windows (x86-32 and x86-64) <ul style="list-style-type: none"> • XP (SP 2) • Vista (SP 1) • Server 2003 (SP2) 	Version 2.2, patch 04* or higher	Sun JRE v1.5** Sun JRE v1.6	Version 11.3, patch 05 or higher
Linux (x86-32 and x86-64)**** <ul style="list-style-type: none"> • Oracle Enterprise Linux version 5.3 or higher • RedHat Enterprise Linux version 5.3 or higher 	Version 2.2, patch 04* or higher	Sun JRE v1.5** Sun JRE v1.6 IBM JRE v1.5** IBM JRE v1.6****	Version 11.3, patch 05 or higher
Sun Solaris (SPARC) <ul style="list-style-type: none"> • Solaris 10/SunOS 5.10 or higher 	Version 2.2, patch 04* or higher	Sun JRE v1.5** Sun JRE v1.6	Version 11.3, patch 05 or higher
IBM AIX 5L pSeries (RISC) 32-bit and 64-bit <ul style="list-style-type: none"> • version 5.3 TL 5200-09 • version 5.3 TL 5300-07 	Version 2.2, patch 04* or higher	IBM JRE v1.5** IBM JRE v1.6****	Version 11.3, patch 05 or higher

* A Docupresentation Windows installation includes a bundled Sun J2SE JRE version 1.6 which is used by default by the Docupresentation server.

** Running the Docupresentation web services interface under JRE version 1.5 requires JAXB 2. See *Downloading JAXB on page 19* for more information.

*** IBM's J2SE JRE version 1.6 is only supported in Docupresentation version 2.2, patch 05 or higher and Documaker Shared Objects version 11.3, patch 06 or higher.

**** Other Linux distributions should work at kernel version 2.6.11.4-21 or higher but have not been tested.

Note To find the latest version of Documaker, Docupresentation, Document Factory, iPPS, or EWPS, log onto the following web site:

<https://support.oracle.com>

Downloading JAXB

JAXB provides a way to map XML and Java code and extend applications with XML and Web Services technologies. You must install and implement JAXB 2 to run the Docupresentation web services interface under JRE version 1.5.

Follow these steps to download the latest version of JAXB:

1. Go to the JAXB web site:
<http://jcp.org/aboutJava/communityprocess/mrel/jsr222/index2.html>
2. Click Download Now for the latest version of JAXB.
3. On the new page, click the Download the Binary link and save the ZIP file to your local machine.
4. Unzip the downloaded ZIP file into directories. There will be a \jaxb-ri directory with a \lib subdirectory.
5. From the \lib subdirectory, copy the jaxb-api.jar and jaxb-impl.jar files to the \lib directory of your Docupresentation installation.

DOCUMAKER WEB SERVICES REQUIREMENTS

Here is a list of the software requirements for Documaker Web Services (DWS).

Component	Description
Java version 1.6	Sun build 1.6.0_01-b06 JRockit 160_05_R27.6.2-20 IBM 1.6.0 SR5
Application server	Oracle WebLogic version 10.3.4 Note: The following Java web servers are supported by DWS, but that support does not extend to the rest of Oracle Documaker Enterprise Edition. IBM WebSphere version 7.0 JBOSS 6.0.0.M1 Tomcat 6.0.20
Operating system	Windows XP Windows 2003 AIX 5.3 Oracle Enterprise Linux version 5.3 Solaris 10
Database	A database is required by Document Factory for the administration and assembly tables. The administration tables are used by composition services. The assembly tables are used by publishing services.
Message bus	A message bus is required by Docupresentation and also used by composition services.
Docupresentation	Oracle Docupresentation is required for composition services.
Document Factory	The Oracle Document Factory is required for publishing services.

Note You must download the JAX-WS RI when using Tomcat version 6.0.20 or later because Tomcat is not a J2EE container and therefore does not provide a JAX-WS RI.

Extract the JAX-WS RI jar files and place them inside WEB-INF\lib directory of the Tomcat DWS.war file before deployment.

You can download the JAX-WS RI from this site:

<http://jax-ws.java.net/ri-download.html>

DOCUMAKER DESKTOP REQUIREMENTS

Your computer must have certain software and hardware components to run Documaker Desktop.

The following tables outline the minimum hardware used to test Documaker Desktop and are included for informational reasons only. You should run the system on a computer configured appropriately for the operating system you use and with the processing power to meet your needs

On Windows

This table outlines the minimum hardware used to test the system on a single user Windows XP workstation.

For Windows XP	Our minimum test configuration is
CPU	Intel® Core™ 2 CPU.2.13GHz
Memory*	1.99 GB RAM
Hard disk**	148 GB
Printer	HP-compatible printers supporting PCL5
Printer memory***	8 MB RAM

* Additional memory improves system performance.

** Depends on the volume of data you must process

*** Additional memory may be required if printing complicated graphics or using a lot of fonts.

This table outlines the minimum hardware used to test the system on a single user Windows Vista workstation.

For Windows Vista	Our minimum test configuration is
CPU	Intel® Core™ 2 CPU.1.86GHz
Memory*	1022 MB RAM
Hard disk**	75 GB
Printer	HP-compatible printers supporting PCL5
Printer memory***	8 MB RAM

* Additional memory improves system performance.

** Depends on the volume of data you must process

*** Additional memory may be required if printing complicated graphics or using a lot of fonts.

Chapter 2

Installing the System

This chapter contains information to help get you started downloading the software, installing the software, and downloading patches. For information on system requirements, see *System Requirements* on page 2.

In this chapter you will find information on...

- *System Overview on page 24*
- *Downloading the Software on page 25*
- *Installing the System on page 28*
- *Downloading the Documentation on page 30*
- *Downloading Patches on page 32*

Note For information on how to set up, maintain, and customize Oracle Documaker Desktop, see the [Documaker Workstation Administration Guide](#). This guide is a reference tool for system supervisors.

SYSTEM OVERVIEW

Documaker Desktop is the workstation-based form set entry and publishing piece of the Documaker system. Documaker is a total form set automation system which enables forms-intensive industries such as insurance, finance, utilities, and government to automate enterprise-wide forms and forms processing.

You collect the information you need for your form sets from various sources including manually entered data, system default data, archived data, and data extracted from external application systems. Documaker Desktop lets you enter that information and print complete, collated form sets on laser printers.

The system's unique data import and export feature enhances the data entry process. The system lets you import data files that automatically fill or propagate the data onto a form's fields. Exporting lets you extract data from Documaker Desktop for use in other applications or for import back into the system.

The system's user interface makes data entry and forms processing easy for non-technical users. You enter basic information and Documaker Desktop displays a list of applicable forms. You then select specific form sets in which to enter data.

DOWNLOADING THE SOFTWARE

Once you make sure your computer has the correct hardware and software, you can download and install Oracle Documaker Desktop.

Oracle Insurance applications are available for download at the Oracle Software Delivery Cloud web site. The process includes:

- Logging in and agreeing to the terms and restrictions
- Searching for the applications you want to download
- Downloading those applications

Note To request applications on CDs, DVDs, or other media, contact your sales representative.

To download the latest patches for the Oracle software you have already installed, visit the My Oracle Support site at this web address:

<https://support.oracle.com>

To download the latest documentation, visit the Oracle Technology Network (OTN) web site at this web address:

<http://www.oracle.com/technetwork/>

Before you begin

The Oracle Software Delivery Cloud site lets you download versions of Oracle applications. Files on the Oracle Software Delivery Cloud are available in ZIP and ISO formats. Once you download the files you need, ZIP files will need to be extracted, and ISO files will need to be burned to CD/DVD to proceed with the software installation.

Note You can download the corresponding product documentation from the Oracle Technology Network (OTN) site:

<http://www.oracle.com/technetwork/documentation/insurance-097481.html>

You will need Acrobat Reader or a similar program to view the PDF documentation. You can download Acrobat Reader at Adobe's site (www.adobe.com).

Follow these instructions to download Oracle Insurance applications:

1. First, go to the Oracle Software Delivery Cloud web site:

<https://edelivery.oracle.com>

2. Sign in with your Oracle account. If you do not have an Oracle Account, you can register for an account here.
3. Review and accept the Terms and Restrictions. The Media Pack Search page appears.
4. Select Oracle Insurance Applications from the Product Pack list and then select your operating system platform. Click Go to start the search.



Media Pack Search

Instructions

Click Go once you have selected the Product Pack and Platform.

1. Review the [License List](#) to determine which Product Pack or Packs you need to download.
2. Select the Product Pack and Platform and click "Go".
3. If there is only one result, you will see the download page. If there are multiple results, select one and click "Continue".

Select a Product Pack ⓘ
 Platform

Results

Select	Description	Release	Part Number	Updated	# Parts / Size
*** No search conducted ***					

Note If you have visited this site previously, the last options you selected appear.

Here is an example of the search results you get for Oracle Insurance applications on Windows.

Results

Click on Description, Release, Part Number, or Updated to sort the list by those columns.

Select	Description	Release	Part Number	Updated	# Parts / Size
<input type="radio"/>	Oracle Documaker Standard Edition 12.0.0 Media Pack for Microsoft Windows (32-bit)	12.0.0.0.0	B62048-01	DEC-27-2010	11 / 809M
<input checked="" type="radio"/>	Oracle Documaker Enterprise Edition 12.0.0 Media Pack for Microsoft Windows (32-bit)	12.0.0.0.0	B62050-01	DEC-27-2010	14 / 1.2G
<input type="radio"/>	Oracle Documaker Desktop 12.0.0 Media Pack for Microsoft Windows (32-bit)	12.0.0.0.0	B62051-01	DEC-27-2010	5 / 391M
<input type="radio"/>	Oracle Insurance Docuflex (v11.3.0.22) Media Pack for Microsoft Windows	11.3.0.22.0	B51546-01	SEP-09-2008	6 / 745M

Note We recommend that you print pages which list the part numbers and their corresponding descriptions. You may need to reference this list during the installation process.

5. Select the media pack you want to download and click Continue. The Download page appears.



Oracle Documaker Enterprise Edition 12.0.0 Media Pack for Microsoft Windows (32-bit)

Search Again

Click the Readme button for more information.

TIP View the Readme file(s) to help decide which files you need to download.

Print this page with the list of downloadable files. It contains a list of the part numbers and their corresponding description that you may need to reference during the installation process.

Oracle Documaker Enterprise Edition 12.0.0 Media Pack v1 for Microsoft Windows (32-bit)

Readme View Digest

Click View Digest to verify the data was not altered in transit.

Select	Name	Part Number	Size (Bytes)
Download	Oracle Documaker Enterprise Edition v12.0 P0 for Windows (32-bit)	V24195-01	363M
Download	Oracle Documaker Wip Edit plug-in v12.0 P0 for Microsoft Windows (32-bit)	V24196-01	49M
Download	Oracle Documaker v12.0 P0 for Microsoft Windows (32-bit)	V24186-01	219M

Note Click View Digest to see a message digest. You can use this digest (also known as a checksum or hash) to verify data was not altered in transit. Review the Download Notes to unload an unzip utility and for instructions on unzipping the files you are downloading.

6. Click Download beside the application you want to download. The Software Delivery Cloud prompts you to save the zipped file on your network and then starts the download.

While you can save the file on any machine you choose, we recommend you save the file onto the machine where you plan to run it. You must unzip the file on the platform for which it was intended. The length of time it takes to download an application depends on the size of the download, your connection speed, and the amount of traffic on the site.

7. Click Sign Out when you finish downloading the files you need.

INSTALLING THE SYSTEM

Once you finish downloading the software, follow these steps to install the Oracle Documaker Desktop on a personal computer running Windows.

Note Re-installation *does not* overwrite your INI files.

If you install the system into an existing directory, the current library setup is retained. If you install the system into a new directory, you must set up all of your libraries—just as you would for a new customer.

If you need to uninstall Oracle Documaker Desktop, use Control Panel's Add or Remove Programs option.

Before you begin

Keep in mind...

- Be sure to log onto your computer as an *Administrator* and make sure you have full directory access permissions to the c:\windows\profiles\all users folder, as well as to the registry.
- When using NTFS drive formats, the logon name must be assigned all privileges and permissions to the Windows operating system folder and all sub-folders within, as well as to make changes to the Windows registry.

Installation

Follow these steps to install the system:

1. From the directory into which you downloaded the media pack, double click on the following program:

`CD1-7spDocumakerStudioFullSystemW32 (version and patch number).exe`

The installation wizard starts.

2. Follow the instructions that appear on your screen to install the software. The installation creates folders and icons on your Start\Programs menu.

After you install the system, restart your computer so the various system settings can take affect. If you install the software on a network, you will need to set up icons and a program group for each user. Refer to your operating system's documentation for information on how to do this.

The system icon

By default, the system creates an icon for the Documaker Studio resource library. If you use multiple resource libraries, such as if you process insurance policies for multiple companies, you may want to create icons for each company's resource library.

RE-INSTALLING THE SYSTEM

If at any time in the future, you need to re-install the system, keep the following points in mind:

- If you re-install the software to the same drive and sub-directory, the PATH statement in your AUTOEXEC.BAT file will not be affected.
- If you re-install the software to a different drive or sub-directory, the new path statements will append to any previous settings in the AUTOEXEC.BAT file.

This makes the system use path statements from the previous installation, and ignore the new path statements. If you want the system to use the new path statements, you must delete the old path statements in the AUTOEXEC.BAT file.

- System INI files (FSISYS.INI and FSIUSER.INI) are located in the FAP\DLL directory. The settings of the INI files located in the FAP\DLL directory will not be affected.
- The INI files in the FAP\DLL directory:
 - Specify default values and other defined parameters
 - Provide system flexibility
 - Store system default settings
 - Allow a user ID to be reset
- The INI files in the DMS1 directories:
 - Allow users to specify Documaker Desktop functions
 - Determine how Documaker Desktop uses the library resources
- FSISYS.INI - Controls information related to the entire system, such as systems settings and program function calls.
- FSIUSER.INI - Controls settings which vary between resource libraries, such as sorting options, archival mode, and import and export ability.

DOWNLOADING THE DOCUMENTATION

You can download the latest Oracle Insurance documentation at the Oracle Technology Network (OTN) web site. The process includes:

- Going to the Oracle Insurance Documentation page on the OTN site
- Searching for the application documentation you want to download
- Downloading that documentation

Note To download applications you have recently purchased, visit the Oracle Software Cloud site at this web address:

<http://edelivery.oracle.com>

To download the latest patches for the Oracle software you have already installed, visit the My Oracle Support site at this web address:

<https://support.oracle.com>

Before you begin

The OTN site lets you download zipped Oracle documentation libraries. To unzip these files, you will need an unzip utility. You will also need Acrobat Reader or a similar program to view the documentation. You can download Acrobat Reader at Adobe's site (www.adobe.com).

Follow these instructions to download Oracle Insurance application documentation:

3. First, go to the Oracle Insurance Documentation page:

<http://www.oracle.com/technetwork/documentation/insurance-097481.html>

4. On the Insurance Documentation page, scroll down to find the documentation library you want to download.

Click on the View Library link to see a list of the documents in this library.

The screenshot shows the Oracle Insurance Documentation page. At the top, there is a navigation bar with the Oracle logo and links for Products and Services, Downloads, Store, Support, Education, Partners, and About. Below this is a search bar and a dropdown menu for Oracle Technology Network. The main content area displays a table titled "Oracle Insurance Compliance Tracker Documentation Library". The table has four columns: Part Number, Link, Download, and Description. Two rows are visible in the table, each with a "View Library" link in the Link column. An arrow from the text on the left points to the "View Library" link for the first row.

Part Number	Link	Download	Description
E15016-01	View Library	Download (11.82 MB)	Oracle Insurance Compliance Tracker Online Documentation Library Release 6.6 for Microsoft Windows (32-Bit)
E14887-01	View Library	Download (10.79 MB)	Oracle Insurance Compliance Forms Tracker Online Documentation Library Release 6.5.1 SP4 for Microsoft Windows (32-Bit)

5. Scroll down to the documentation library you want and click Download.

Click the Download link to download this documentation library.

Oracle Documaker Documentation Libraries

Part Number	Link	Download	Description
E16256-01	View Library	Download (98.63 MB)	Oracle Documaker Online Documentation Library Release 11.5

The Download page appears. Your browser prompts you to save or open the zipped file and then starts the download.

The length of time it takes to download an application depends on the size of the download, your connection speed, and the amount of traffic on the site.

Tip You can use your favorite search engine to find topics in the Documaker documentation set on OTN. For instance, to find information on the Documaker Add-In for Microsoft Word, you could enter the following:

Oracle Documaker + Documaker Add-In

Or, for information about Documaker's MET2FAP utility, you could enter:

Oracle Documaker + MET2FAP

Review your search engine's documentation for advanced searching tips and techniques.

DOWNLOADING PATCHES

You can download the latest Oracle software patches at the My Oracle Support web site. The process includes:

- Going to the Support site (requires registration)
- Searching for the patches you want to download
- Downloading those patches

Note To download applications you have recently purchased, visit the Oracle Software Delivery Cloud site at this web address:

<http://edelivery.oracle.com>

To download the latest documentation for the Oracle software you have already installed, visit the Oracle Technology Network (OTN) site at this web address:

<http://www.oracle.com/technetwork/>

Before you begin

The My Oracle Support site lets you download zipped Oracle software patches. To unzip these files, you will need an unzip utility. If you do not have an unzip utility, you can download one from the Patch Request page.

Follow these instructions to download Oracle software patches:

1. First, go to the My Oracle Support web site:

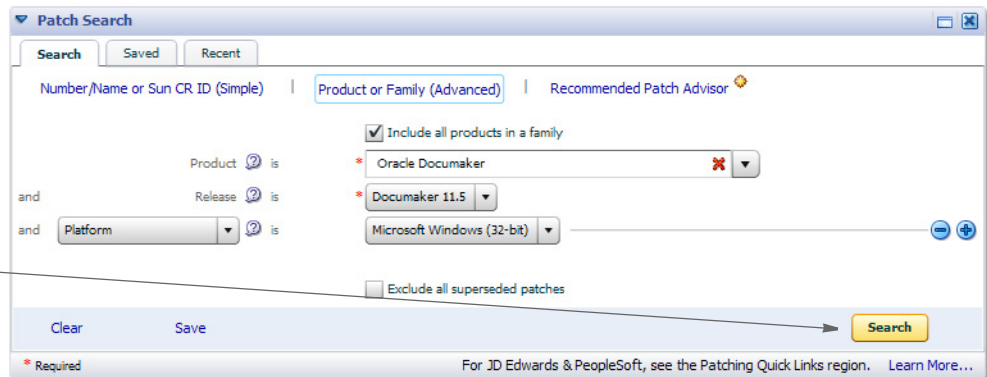
<https://support.oracle.com>

2. Enter your name and password to log into Oracle Support.
3. Click on the Patches and Updates tab. The Patches & Updates page appears.

You can use this page to start a search, retrieve recommended patches, retrieve a saved search, or go to the Oracle Software Delivery Cloud site to download an update.

For instance, you could choose to do a Patch Search, and enter the following criteria to search for patches for Documaker version 11.5:

Select the search criteria and click Search.



Once you click Search, the system displays the items it finds. Here is an example:

Patch Search Results

Filters: Product is Oracle Documaker; Release is Documaker 11.5; Platform is Microsoft Windows (32-bit); 1 - 9 of 9 [Edit Search](#)

Patch Name	Description	Release	Platform (Language)	Classification	Product/Family	Updated	Size
<input type="checkbox"/> 11710558	FORMS INTEGRITY MANAGER 2.8.4.3 PATCH 1 INSTALL (Patch)	11.5	Microsoft Windows (32-...	General	Oracle Documa...	36+ weeks ago	118.2 MB
<input type="checkbox"/> 11732718	GA RELEASE OF ORACLE DOCUMAKER 11.5 P02 (W32 DOCUMAKER STUDIO FULL SYSTEM) (Patchset)	11.5	Microsoft Windows (32-...	General	Oracle Documa...	32+ weeks ago	483.3 MB
<input type="checkbox"/> 11737203	ORACLE DOCUMAKER MONOTYPE FONTS P02 (APP, XER, PST, TT, PCL) (Patchset)	11.5	Microsoft Windows (32-...	General	Oracle Documa...	32+ weeks ago	62.7 MB
<input type="checkbox"/> 11741712	GA RELEASE OF ORACLE DOCUMAKER 11.5 P02 (W32 WIP EDIT) (Patchset)	11.5	Microsoft Windows (32-...	General	Oracle Documa...	32+ weeks ago	45.5 MB
<input type="checkbox"/> 12600761	GA RELEASE OF ORACLE DOCUMAKER 11.5 P03 (W32 DOCUMAKER STUDIO FULL SYSTEM) (Patchset)	11.5	Microsoft Windows (32-...	General	Oracle Documa...	20+ weeks ago	483.3 MB
<input type="checkbox"/> 12600951	ORACLE DOCUMAKER MONOTYPE FONTS P03 (APP, XER, PST, TT, PCL) (Patchset)	11.5	Microsoft Windows (32-...	General	Oracle Documa...	20+ weeks ago	133.3 MB
<input type="checkbox"/> 12600961	GA RELEASE OF ORACLE DOCUMAKER 11.5 P03 (W32 WIP EDIT) (Patchset)	11.5	Microsoft Windows (32-...	General	Oracle Documa...	20+ weeks ago	45.5 MB
<input type="checkbox"/> 9841268	GA RELEASE OF ORACLE DOCUMAKER 11.5 P01 (W32 DOCUMAKER STUDIO FULL SYSTEM) (Patch)	11.5	Microsoft Windows (32-...	General	Oracle Documa...	1 year ago	483.4 MB
<input type="checkbox"/> 9841327	GA RELEASE OF ORACLE DOCUMAKER 11.5 (FONTS) (Patch)	11.5	Microsoft Windows (32-...	General	Oracle Documa...	1 year ago	62.7 MB

- Choose the patch you want to download, then click the download icon for that patch.

Patch Name	Description	Release	Platform (Language)	Classification	Product/Family	Updated	Size	
<input type="checkbox"/> 11710558	FORMS INTEGRITY MANAGER 2.8.4.3 PATCH 1 INSTALL (Patch)	11.5	Microsoft Windows (32-...	General	Oracle Documa...	36+ weeks ago	118.2 MB	
<input checked="" type="checkbox"/> 11732718	GA RELEASE OF ORACLE DOCUMAKER 11.5 P02 (W32 DOCUMAKER STUDIO FULL SYSTEM) (Patchset)	11.5	Microsoft Windows (32-...	General	Oracle Documa...	32+ weeks ago	483.3 MB	
<input type="checkbox"/> 11737203	ORACLE DOCU... XER, PST, TT, P...	1 Patch Selected		Read Me	Add to Plan	Download	Copy	Documa... 32+ weeks ago 62.7 MB
<input type="checkbox"/> 11741712	GA RELEASE OF ORACLE DOCUMAKER 11.5 P02 (W32 WIP EDIT) (Patchset)	11.5	Microsoft Windows (32-...			Download files for selected patch	32+ weeks ago 45.5 MB	

Click here to download the patch.

Your browser prompts you to save or open the zipped file and then starts the download.

The length of time it takes to download an application depends on the size of the download, your connection speed, and the amount of traffic on the site.

Appendix A

Installing the PPS Reporting Tool

This appendix discusses how to install the PPS Reporting Tool. You can use this tool to select and retrieve information stored in your PPS archives.

This chapter includes information on these topics:

- *Requirements on page 36*
- *Installation on page 37*
 - *Installing the Required Dependencies on page 37*
 - *Starting the Installation on page 38*

REQUIREMENTS

The following software and hardware components are a minimum of what you need to run the PPS Reporting Tool. Newer versions of these software packages and/or a more powerful system can improve performance. In addition, you will find information on setting up Windows user accounts.

Software requirements

To use the PPS Reporting Tool, you should have these software systems:

- Any version of PPS
- A PDF file viewer to view FAP files as PDF files
- Microsoft Windows XP (SP2), Vista, and Windows 7
- Microsoft .NET Framework 3.5. For more information, go to this web site:
<http://www.microsoft.com/downloads/en/details.aspx?FamilyId=333325fd-ae52-4e35-b531-508d977d32a6>
- Microsoft Core XML Services (MSXML6.0)
- Microsoft Internet Explorer 7.0 or higher (Not required to be your default internet browser)
- Microsoft Windows Installer 3.1. This is required for Microsoft Core XML Services (MSXML6.0).
- Microsoft Access (from Microsoft Office 2000 or higher.)
- Microsoft Excel is recommended and is required for the Lloyds Bordereau Report Example (from Microsoft Office 2000 or higher.)

Hardware requirements

To run the PPS Reporting Tool, your computer must meet or exceed this hardware requirements:

Processor	800 MHz
Memory	256 MB
Hard drive space	330 MB (280 MB*, 50 MB PPS Reporting Tool)
Display	1024 x 768 High Color

User account requirements

The Windows user accounts you set up must have these privileges:

- Computer Registry Read & Write access privileges
- Hard Disk Read & Write access privileges

Contact your System Administrator if you have questions about these privileges.

INSTALLATION

Before you install the PPS Reporting Tool, make sure you...

- Log in as the Administrator or as a user with Administrative rights.
- Close all other programs before you start the installation process.
- Have Internet access. This may be required to install Microsoft .NET Framework.

After you finish, perform a Windows Update to make sure you have all of the latest security patches for the Microsoft products installed.

Download Oracle Documaker Desktop from the Oracle Software Delivery Cloud site and follow these steps to install the PPS Reporting Tool. For more information, see *Downloading the Software on page 25*.

Installing the Required Dependencies

The Oracle Documaker Desktop installation automatically searches for and installs (with your permission) the required software packages, except Microsoft Access and Microsoft Excel (see *Software requirements on page 36* for more information). If you cancel any of the required dependencies, the installation ends and is incomplete.

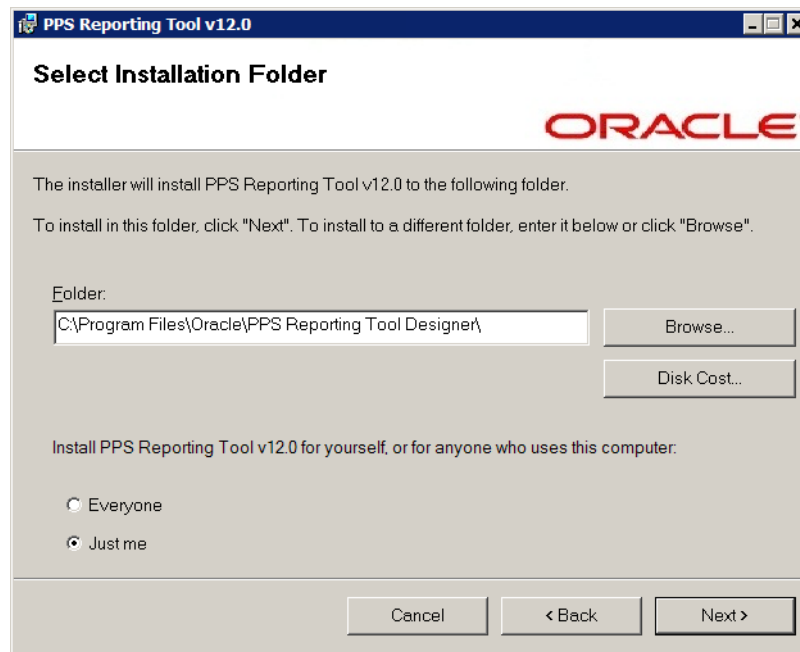
During this process Windows might prompt you to restart your computer. When your computer has restarted, please restart the install for the PPS Reporting Tool to continue.

Note You should uninstall any prior versions of the PPS Reporting Tool *before* you install a new version.

Starting the Installation

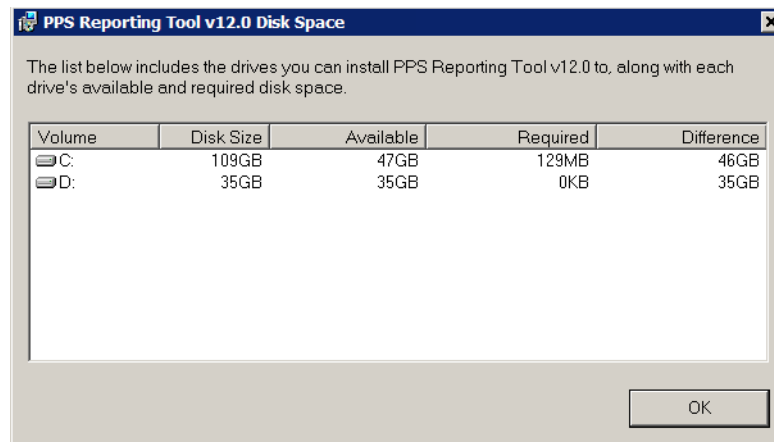
After the dependencies are checked, the installation for the PPS Reporting Tool starts. Follow these steps:

1. On the Welcome screen, click Next. The Select Installation Folder window appears:



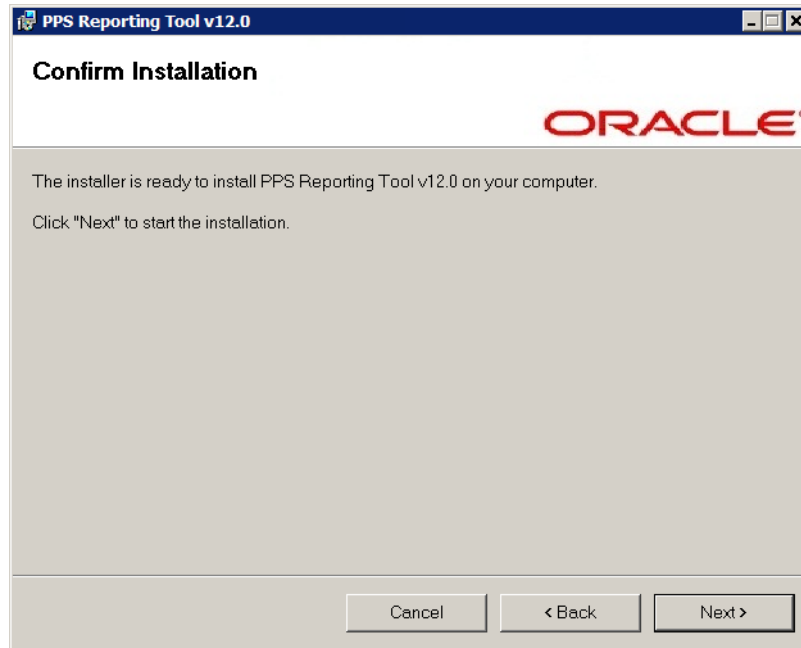
2. You can change the default installation drive, folder, and who can access the application from here or click Next to accept the defaults and continue.

If you need to choose a different drive, click the Disk Cost button to see which drives are available and how much space is required and available to you.

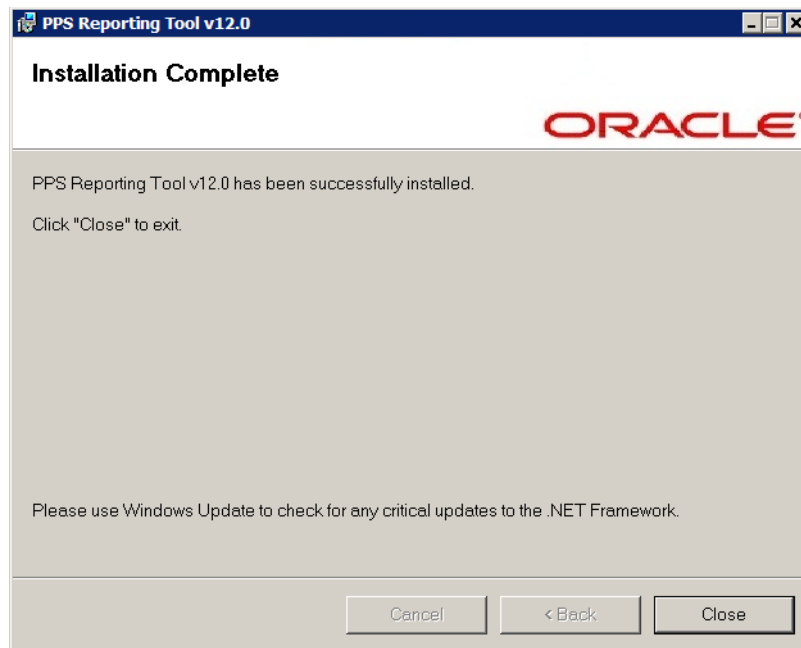


Click Ok to exit the Disk Space window and return to the installation.

3. Click Next. The Confirm Installation window appears.



4. Click Next again to confirm your selections and start the installation. When the installation is complete, you see the following window:



5. Click Close.

INDEX

A

- AIX
 - Documaker system requirements, 9
 - Docupresentation system requirements, 12
 - Docupresentation web server requirements, 13
 - system requirements, 2
- AUTOEXEC.BAT file, 29
- awk utility, 9

C

- compilers
 - system requirements, 8, 9, 10, 12, 13

D

- Documaker Desktop
 - requirements, 21
- Documaker Server
 - requirements, 7
- documentation
 - downloading, 30
- Docupresentation
 - JREs, 18
 - message bus systems, 17
 - requirements, 11

E

- EWPS
 - system requirements, 16

F

- Firefox
 - supported versions, 5
- FSISYS.INI file
 - reinstalling the system, 29
- FSIUSER.INI file
 - reinstalling the system, 29

H

- HP-UX
 - system requirements, 2

I

- icons
 - system, 28
- installing
 - re-installing the software, 29
 - the system, 25
- Internet Explorer
 - supported versions, 5

iPPS

- system requirements, 14

J

- JAXB, 19

L

- Linux
 - Documaker system requirements, 10
 - Docupresentation requirements, 12
 - Docupresentation web server requirements, 13
 - system requirements, 2

M

- media packs, 25
- Microsoft .NET Framework
 - PPS Reporting Tool, 37

N

- networks
 - system requirements, 3

O

- Oracle Software Delivery Cloud, 25
- OS//390
 - system requirements, 2
- OTN web site, 30

P

- patches
 - downloading, 32
- path
 - statements, 29
- PPS Reporting Tool
 - installing, 35
 - requirements, 36
- printers
 - system requirements, 7, 8, 9, 21

R

- re-installing the software, 29

S

- setting up
 - the system, 23
- software
 - downloading, 25
- Solaris
 - Documaker system requirements, 10

- Docupresentment system requirements, 13
- Docupresentment web server requirements, 13
- system requirements, 2

system requirements, 2

U

- uncompress utility, 9
- uninstall, 28
- UNIX
 - system requirements, 2
- updates
 - downloading, 32
- uudecode utility, 9

W

- Windows
 - Docupresentment system requirements, 11
 - Docupresentment web server requirements, 13
 - system requirements, 2
- WIP Edit plug-in
 - browser requirements, 5

Z

- z/OS
 - Documaker system requirements, 8
 - system requirements, 2