

**Oracle© Enterprise Single Sign-on
Anywhere**

Administrator Guide

Release 11.1.1.2.0

E15579-02

November 2010

Copyright ©2009-2010, Oracle. All rights reserved.

The Programs (which include both the software and documentation) contain proprietary information; they are provided under a license agreement containing restrictions on use and disclosure and are also protected by copyright, patent, and other intellectual and industrial property laws. Reverse engineering, disassembly, or decompilation of the Programs, except to the extent required to obtain interoperability with other independently created software or as specified by law, is prohibited.

The information contained in this document is subject to change without notice. If you find any problems in the documentation, please report them to us in writing. This document is not warranted to be error-free. Except as may be expressly permitted in your license agreement for these Programs, no part of these Programs may be reproduced or transmitted in any form or by any means, electronic or mechanical, for any purpose.

If the Programs are delivered to the United States Government or anyone licensing or using the Programs on behalf of the United States Government, the following notice is applicable:

U.S. GOVERNMENT RIGHTS Programs, software, databases, and related documentation and technical data delivered to U.S. Government customers are "commercial computer software" or "commercial technical data" pursuant to the applicable Federal Acquisition Regulation and agency-specific supplemental regulations. As such, use, duplication, disclosure, modification, and adaptation of the Programs, including documentation and technical data, shall be subject to the licensing restrictions set forth in the applicable Oracle license agreement, and, to the extent applicable, the additional rights set forth in FAR 52.227-19, Commercial Computer Software--Restricted Rights (June 1987). Oracle USA, Inc., 500 Oracle Parkway, Redwood City, CA 94065.

The Programs are not intended for use in any nuclear, aviation, mass transit, medical, or other inherently dangerous applications. It shall be the licensee's responsibility to take all appropriate fail-safe, backup, redundancy and other measures to ensure the safe use of such applications if the Programs are used for such purposes, and we disclaim liability for any damages caused by such use of the Programs.

Oracle, JD Edwards, PeopleSoft, and Siebel are registered trademarks of Oracle Corporation and/or its affiliates. Other names may be trademarks of their respective owners.

The Programs may provide links to Web sites and access to content, products, and services from third parties. Oracle is not responsible for the availability of, or any content provided on, third-party Web sites. You bear all risks associated with the use of such content. If you choose to purchase any products or services from a third party, the relationship is directly between you and the third party. Oracle is not responsible for: (a) the quality of third-party products or services; or (b) fulfilling any of the terms of the agreement with the third party, including delivery of products or services and warranty obligations related to purchased products or services. Oracle is not responsible for any loss or damage of any sort that you may incur from dealing with any third party.

Table of Contents

Abbreviations and Terminology.....	4
About Oracle Enterprise Single Sign-on Anywhere.....	5
Overview of Creating a Deployment Package.....	6
General Tab.....	8
Options Tab.....	9
Install.....	9
Updates.....	10
Agent Settings.....	10
Generate Tab.....	11

Abbreviations and Terminology

Following is a list of commonly-used abbreviations and terminology.

Abbreviation or Terminology	Full Name
Administrative Console	ESSO-LM Administrative Console
Agent	Logon Manager
FTU	First Time Use Wizard
ESSO-AM	Oracle Enterprise Single Sign-on Authentication Manager
ESSO-Anywhere	Oracle Enterprise Single Sign-on Anywhere
ESSO-PG	Oracle Enterprise Single Sign-on Provisioning Gateway
ESSO-KM	Oracle Enterprise Single Sign-on Kiosk Manager
ESSO-LM	Oracle Enterprise Single Sign-on Logon Manager
ESSO-PR	Oracle Enterprise Single Sign-on Password Reset

About Oracle Enterprise Single Sign-on Anywhere

Oracle Enterprise Single Sign-on Anywhere (ESSO-Anywhere) is the latest innovation in portable single sign-on (SSO) technology, enabling deployment of Oracle Enterprise Single Sign-on Logon Manager (ESSO-LM) and other Agents to end users' desktops.

Using the ESSO-Anywhere Console, the administrator creates a deployment package configured with the Oracle products needed by users of an enterprise, making the package available over a Web server or file share. Users download this deployment package from an HTML interface that is included with the ESSO-Anywhere package, and which the administrator customizes. Users can then perform installations of the Oracle product suite on their own workstations at the click of a button, with assurance that configurations are correct and ready to run, and without administrator intervention.

ESSO-Anywhere is designed for compatibility with Windows Authenticator v1. It is not designed to work with ESSO-LM features that require installing system services or GINAs, adding registry entries outside of Live HKLM\Software\Passlogix, or additions to Program Files or Windows system folders.

The deployment package must include ESSO-LM and might include either or both of the following Agents:

- Oracle Enterprise Single Sign-on Authentication Manager (ESSO-AM)
- Oracle Enterprise Single Sign-on Provisioning Gateway (ESSO-PG).

The Visual C++ Runtime Library and .NET 2.0 Framework are prerequisites for running ESSO-Anywhere. The installation package includes the Visual C++ Runtime Library, however you must make the .NET 2.0 Framework available to users. See the [ESSO-Anywhere Release Notes](#) for a complete list of software and hardware requirements.



The final output of the deployment package is not an .MSI file. You must ensure that you supply any additional requirements that your end users will need to run their ESSO-LM and additional Agent software.

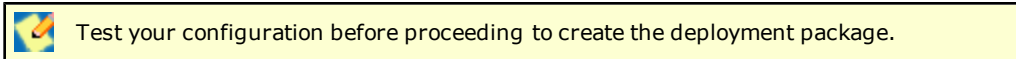
Due to security restrictions in Vista, you must change group policy settings in order for end users running Vista client to use the ESSO-Anywhere deployment package. See the Technical Notes section in [ESSO-Anywhere Release Notes](#) for more information.

Overview of Creating a Deployment Package

Following is the general procedure for creating a deployment package. Use the settings in the three tabs of the ESSO-Anywhere Console for your deployment configurations. See the help topic for each tab for an in-depth discussion of that tab's settings.

To create a deployment package:

1. Create a certificate file to be submitted when you generate the deployment package.
2. Install the ESSO-LM Administrative Console and Agent on a clean workstation.
3. Optionally, install additional Agents: ESSO-AM, and ESSO-PG.
4. Configure all Oracle products as you want them for deployment.
5. Make your ESSO-LM, ESSO-AM, and ESSO-PG configuration settings available to ESSO-Anywhere by doing one of the following:
 - To have ESSO-Anywhere import configuration settings from the local registry, write the Global Agent Settings to the registry;
 - To have ESSO-Anywhere import configuration settings stored in a .REG file, export your settings from the ESSO-LM Administrative Console to a .REG file. For more information, see the ESSO-LM [Administrative Console Help file](#).



6. Install the ESSO-Anywhere Console. ESSO-Anywhere reads the Oracle software configuration on the workstation where you installed it.
7. Verify in the [General](#) tab that the products and versions installed are the ones that you want to deploy.
8. From the [Options](#) tab, specify:
 - The deployment version and location, the installation location, and the installation type
 - The update schedule preferences
 - Which registry settings ESSO-Anywhere will use (the settings from the live registry, or the registry file you optionally created previously).
9. On the [Generate](#) tab:

The ESSO-Anywhere Console creates a deployment package in the location you specified in the **Output folder** setting.

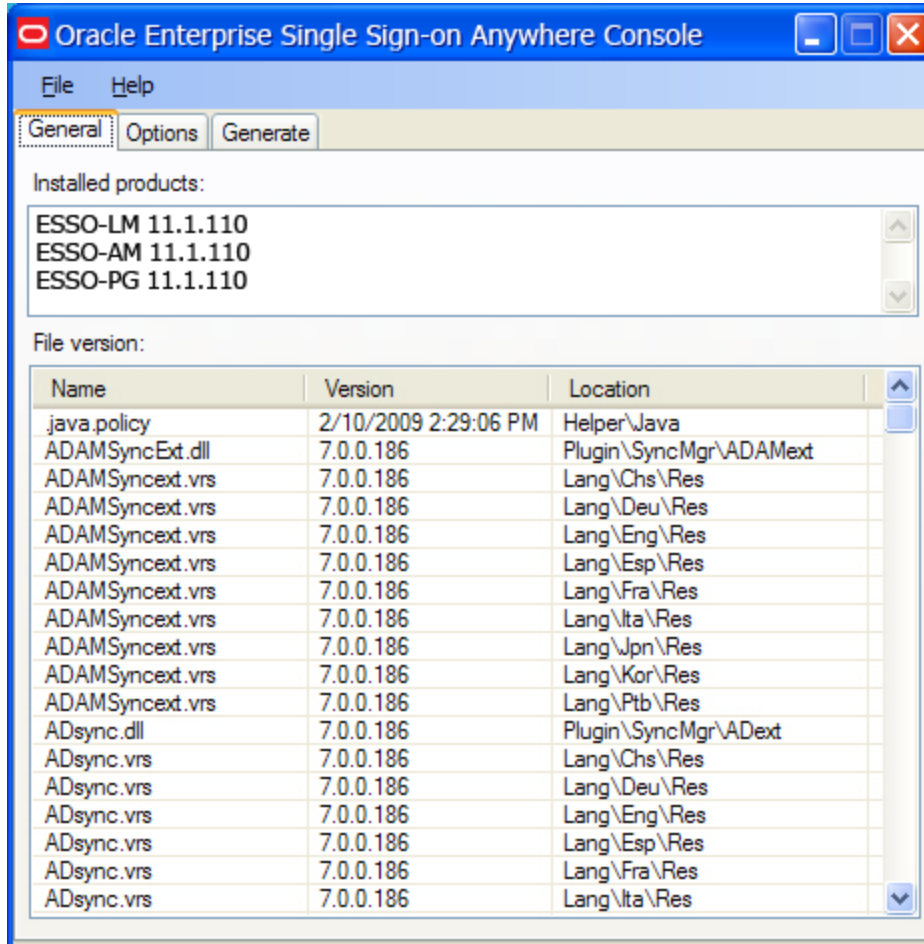
 - a. In the Summary window, review all settings.
 - b. Enter the directory path where the deployment package will be created, or click the **Browse...** button to navigate to the directory.
 - c. Click the **Generate** button.
 - d. At the prompt, enter the location for the certificate file that you created, and the password.
10. From the File menu, click **Save** or **Save As...** to save the deployment configuration settings.
11. Copy the deployment package to the virtual directory or file share that you specified in the Target location setting.
12. If deploying from a web server, customize the index.html file in the deployment directory, replacing the generic text with the information that you want end users to see.
13. If this is a first installation, notify users that the deployment package is available.
14. To create additional deployment packages, reconfigure settings on the ESSO-LM Administrative Console, and click **New** on the ESSO-Anywhere **File** menu.



Users do not have the option to alter the installation. If you want different users to install different packages, create a separate deployment package for each installation.

General Tab

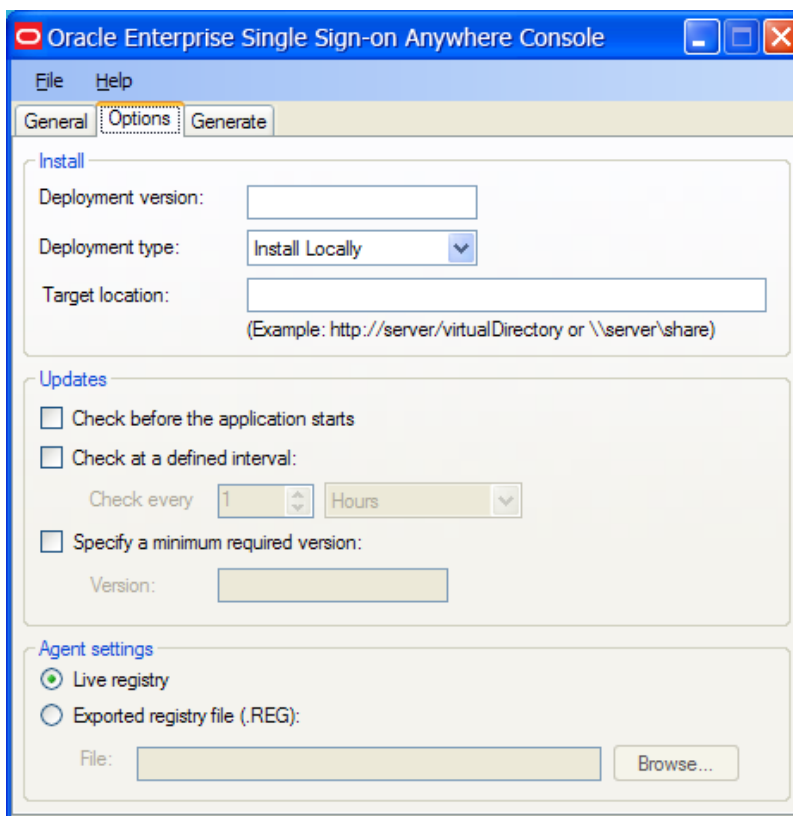
The two sections of the **General** tab contain information about the Oracle products installed on the workstation where you are creating the deployment package.



Installed products	This section lists all Oracle products in the configuration. This list must contain ESSO-LM and might also include a combination of ESSO-AM and ESSO-PG.
File version	This section lists all components that were installed as part of the Oracle product installation, with their version numbers and installation locations. This information is the same as the information in the ESSO-LM "About" box.

Options Tab

Use the **Options** tab to configure the settings for your deployment package.



Install

Use the settings in the **Install** group to configure the deployment version and file locations.

Deployment version	Specify the four-field (x.x.x.x) version number of the deployment. It is your choice whether to match the deployment version to the version of ESSO-LM that you use for the deployment.
Deployment type	Specify whether ESSO-Anywhere will install on the local workstation. The Install Locally option creates a shortcut icon to ESSO-Anywhere in the user's Start menu and adds an entry for ESSO-Anywhere to the user's Add or Remove Programs applet on the Control Panel. The Online option is a per-session deployment and does not create the Start menu shortcut or add an entry to Add or Remove Programs. It also requires the user to have access to the web server or file share where the ESSO-Anywhere deployment package is located in order to run ESSO-Anywhere. The files will be cached on the user's machine, but the user cannot run the program directly.
Target location	Enter the virtual directory or file share from which ESSO-Anywhere will be distributed.

Updates

Use the settings in the **Updates** group to specify when ESSO-Anywhere should check for updates, and whether the user has the option to reject them when they are available.

If the user declines an optional update, ESSO-Anywhere does not offer that update again.

Check before the application starts	Check this box to have ESSO-Anywhere check for updates to any of the installed files before the application launches. ESSO-Anywhere updates only files that have changed.
Check at defined intervals	Check this box to specify a time interval at which ESSO-Anywhere checks for updates. Configurable intervals are from one hour to one year (52 weeks).
Specify a minimum required version	<p>Check this box to enforce a minimum deployment version.</p> <p>This setting is useful for rollbacks. ESSO-Anywhere rolls back only one version. If you want to roll back beyond the previous deployment, rename the desired rollback to a higher version than currently installed, and specify this new version as the minimum required. Rollbacks are available through Control Panel > Add or Remove Programs > Change > Restore.</p>

Localized Deployments

In order for localized installers and update notifications to appear in the correct language, you must have the appropriate .NET language pack installed on the workstation. To install a .NET language pack:

1. Log on to the local workstation.
2. Install the latest Microsoft .NET Framework if it is not already present (version 2.0 or above is required).
3. Download and install the target .NET language pack for your version of the .NET Framework.
4. Restart the workstation.
5. Install ESSO-Anywhere.
The installer appears in the target language.

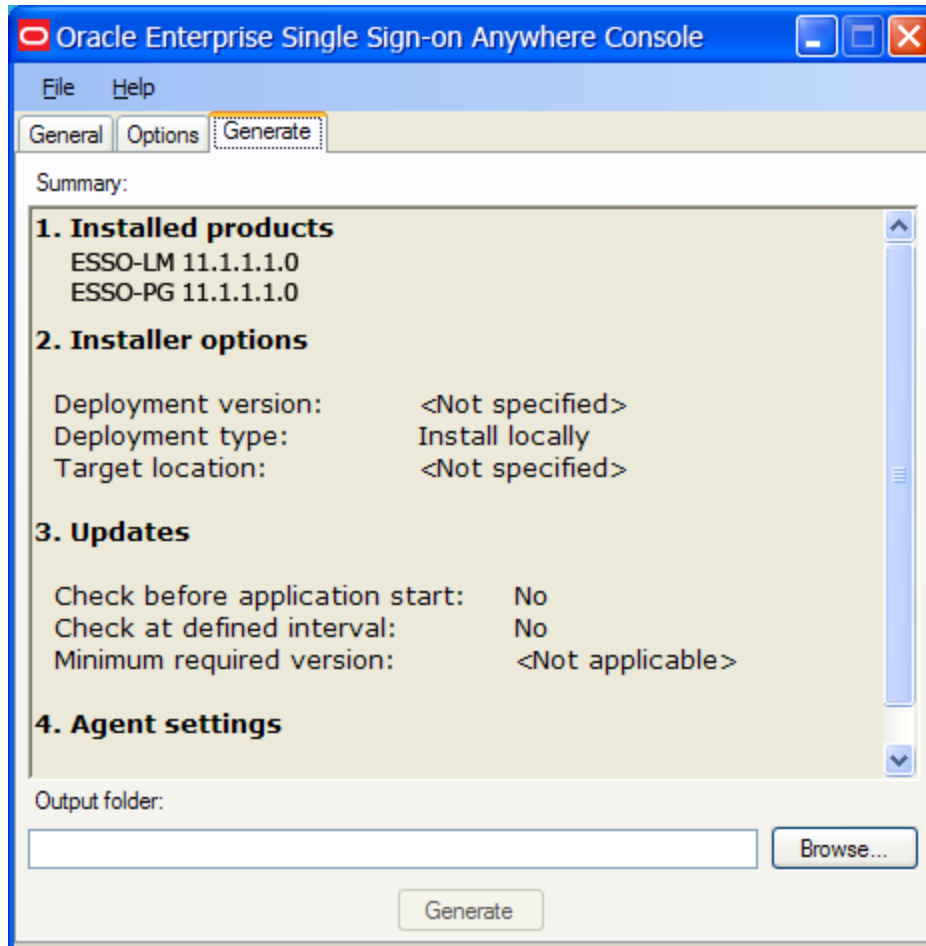
Agent Settings

Use the settings in the Agent Settings group to specify which registry settings ESSO-Anywhere should use.

Live registry	Select to use the same settings as in the ESSO-Anywhere live registry.
Exported registry file (.REG)	Select to use a custom registry that you created in the Administrative Console and exported. If you select this option, click the Browse... button to direct ESSO-Anywhere to the desired registry file.

Generate Tab

Use the **Generate** tab to view a summary of your configuration settings, specify a location for your deployment output, and generate your deployment package.



Summary	Review the settings in the General and Options tabs.
Output folder	Enter the path of the directory where you want to generate the ESSO-Anywhere deployment, or click the Browse... button to navigate to the desired directory.
Generate	After you review your settings and specify the location of the deployment package, click the Generate button to create the ESSO-Anywhere deployment package.



Before distributing the deployment package, verify that it works correctly.

The ESSO-Anywhere installation includes a customizable index.html file. Edit this file with the information to direct end users to the deployment package, and distribute it.