

Oracle Insurance

**Insbridge Rating and
Underwriting**

**SoftRater for WebLogic
Installation Guide**

Release 4.0.1

August 2010

Copyright © 2005, 2010, Oracle and/or its affiliates. All rights reserved.

Oracle Insurance Insbridge Rating and Underwriting SoftRater for WebLogic Installation Guide

Release 4.0.1

Part # E18500-01

Library # E18517-01

August 2010

Primary Authors: Mary Elizabeth Wiger

This software and related documentation are provided under a license agreement containing restrictions on use and disclosure and are protected by intellectual property laws. Except as expressly permitted in your license agreement or allowed by law, you may not use, copy, reproduce, translate, broadcast, modify, license, transmit, distribute, exhibit, perform, publish, or display any part, in any form, or by any means. Reverse engineering, disassembly, or decompilation of this software, unless required by law for interoperability, is prohibited.

The information contained herein is subject to change without notice and is not warranted to be error-free. If you find any errors, please report them to us in writing.

If this software or related documentation is delivered to the U.S. Government or anyone licensing it on behalf of the U.S. Government, the following notice is applicable:

U.S. GOVERNMENT RIGHTS

Programs, software, databases, and related documentation and technical data delivered to U.S. Government customers are "commercial computer software" or "commercial technical data" pursuant to the applicable Federal Acquisition Regulation and agency-specific supplemental regulations. As such, the use, duplication, disclosure, modification, and adaptation shall be subject to the restrictions and license terms set forth in the applicable Government contract, and, to the extent applicable by the terms of the Government contract, the additional rights set forth in FAR 52.227-19, Commercial Computer Software License (December 2007). Oracle USA, Inc., 500 Oracle Parkway, Redwood City, CA 94065.

This software is developed for general use in a variety of information management applications. It is not developed or intended for use in any inherently dangerous applications, including applications which may create a risk of personal injury. If you use this software in dangerous applications, then you shall be responsible to take all appropriate fail-safe, backup, redundancy, and other measures to ensure the safe use of this software. Oracle Corporation and its affiliates disclaim any liability for any damages caused by use of this software in dangerous applications.

Oracle is a registered trademark of Oracle Corporation and/or its affiliates. Other names may be trademarks of their respective owners.

This software and documentation may provide access to or information on content, products, and services from third parties. Oracle Corporation and its affiliates are not responsible for and expressly disclaim all warranties of any kind with respect to third-party content, products, and services. Oracle Corporation and its affiliates will not be responsible for any loss, costs, or damages incurred due to your access to or use of third-party content, products, or services.

Where an Oracle offering includes third party content or software, we may be required to include related notices. For information on third party notices and the software and related documentation in connection with which they need to be included, please contact the attorney from the Development and Strategic Initiatives Legal Group that supports the development team for the Oracle offering. Contact information can be found on the Attorney Contact Chart.

The information contained in this document is for informational sharing purposes only and should be considered in your capacity as a customer advisory board member or pursuant to your beta trial agreement only. It is not a commitment to deliver any material, code, or functionality, and should not be relied upon in making purchasing decisions. The development, release, and timing of any features or functionality described in this document remains at the sole discretion of Oracle.

This document in any form, software or printed matter, contains proprietary information that is the exclusive property of Oracle. Your access to and use of this confidential material is subject to the terms and conditions of your Oracle Software License and Service Agreement, which has been executed and with which you agree to comply. This document and information contained herein may not be disclosed, copied, reproduced, or distributed to anyone outside Oracle without prior written consent of Oracle. This document is not part of your license agreement nor can it be incorporated into any contractual agreement with Oracle or its subsidiaries or affiliates.

CONTENTS

	PREFACE	v
	Audience	v
	Related Documents	v
	Conventions	v
	System Requirements.....	vi
	E-Delivery.....	vi
	Manual History	vii
CHAPTER 1		
	WEBLOGIC REQUIREMENTS.....	8
	Locating the Configuration Files	8
CHAPTER 2		
	SETTING UP WEBLOGIC	9
	Creating a New Server Domain	9
	Configuration Wizard	10
	Adding a System Property to WL Server	18
	Adding to the WebLogic Server - Windows	18
	Adding to the WebLogic Server – UNIX	19
CHAPTER 3		
	WEBLOGIC MAIN CONSOLE	20
	Starting the WebLogic Server	20
	Accessing the WebLogic Main Console	20
	Step 1: Installation of Required Library.....	21
	Step 2: Editing on the WebLogic Main Console	21
CHAPTER 4		
	PREPARATION FOR DB2 INSTALLATION.....	24
CHAPTER 5		
	INSTALLATION OF THE .EAR FILE	25
	Project Composition.....	27
CHAPTER 6		
	CREATING A SOFTRATER DATABASE.....	28
	Microsoft SQL Server.....	28
	ORACLE	28
	IBM DB2.....	29

CHAPTER 7	
	ACCESSING THE APPLICATION..... 30
CHAPTER 8	
	SQL SERVER UPGRADE 31
CHAPTER 9	
	UPGRADING THE APPLICATION 32
	UPGRADE NOTICE..... 32
	Upgrading from a Previous Release..... 33
SUPPORT	
	CONTACTING SUPPORT 34
	TTY Access to Oracle Support Services 34
INDEX	
	INDEX 35

LIST OF FIGURES

FIGURE 1 – START MENU	9
FIGURE 2 – CREATING NEW WEBLOGIC DOMAIN	10
FIGURE 3 – SELECTING DOMAIN SOURCE	11
FIGURE 4 – SPECIFYING DOMAIN NAME AND LOCATION.....	12
FIGURE 5 – CREATING USER NAME AND PASSWORD.....	13
FIGURE 6 – CONFIGURING SERVER START MODE AND JDK.....	14
FIGURE 7 – CUSTOMIZING ENVIRONMENT AND SERVICE SETTINGS.....	15
FIGURE 8 – CREATING WEBLOGIC DOMAIN	16
FIGURE 9 – START MENU	17
FIGURE 10 – STARTWEBLOGIC.CMD FILE	18
FIGURE 11 – EDITING STARTWEBLOGIC.CMD FILE.....	19
FIGURE 12 – EDITED STARTWEBLOGIC.CMD FILE	19
FIGURE 13 – LOGGING INTO WEBLOGIC SERVER.....	20
FIGURE 14 – ORACLE JSP LIBRARY.....	21
FIGURE 15 – WEBLOGIC CONSOLE	21
FIGURE 16 – DEPLOYMENTS PAGE	22
FIGURE 17 – LIST OF LIBRARIES	22
FIGURE 18 – SELECTING DEFAULTS	23
FIGURE 19 – SELECT THE APPLICATION .EAR.....	25
FIGURE 20 – VERIFY APPLICATION INSTALLATION.....	26
FIGURE 21 – SUCCESSFUL INSTALLATION.....	26
FIGURE 22 – PROJECT COMPOSITION	27
FIGURE 23 – IBSS MAIN PAGE	30

PREFACE

Welcome to *Oracle Insurance Insbridge Rating and Underwriting SoftRater for WebLogic Installation Guide*. This guide describes how to install and configure SoftRater for WebLogic Server 10.3.1. SoftRater may be used in conjunction with the Oracle Insurance Insbridge Rating and Underwriting RateManager (RateManager) system to process rating requests or it may stand alone.

The Insbridge SoftRater Server (IBSS) is the container for all Insbridge web components including the SoftRater Engine. All independent Insbridge components will be contained in the IBSS.

NOTE: *This installation was tested and certified on WebLogic 10.3.1.*

AUDIENCE

This guide is intended for technical personal, such as installers, system administrators and others tasked with configuring SoftRater that would be involved in the maintenance and operation of SoftRater or RateManager. The audience for this guide should have a thorough knowledge of WebLogic.

RELATED DOCUMENTS

For more information, refer to the following Oracle resources:

- The Oracle Insurance Insbridge Rating and Underwriting Framework Administrator.
- The Oracle Insurance Insbridge Rating and Underwriting SoftRater Server Guide.
- You can view these guides in-line at this address:

<http://www.oracle.com/technology/documentation/insurance.html>

CONVENTIONS

This document may reference the following abbreviations:

- **WL:** WebLogic Server
- **JNDI:** Java Naming and Directory Interface

The following text conventions are used in this document:

Convention	Description
bold	Boldface type indicates graphical user interface elements associated with an action.
<i>italic</i>	Italic type indicates book titles, emphasis, or placeholder variables for which you supply particular values.
monospace	Monospace type indicates commands within a paragraph, URLs, code in examples, text that appears on the screen, or text that you enter.

SYSTEM REQUIREMENTS

For minimum operating system and hardware requirements, please see the Hardware Software requirements guide.

E-DELIVERY

The Insbridge Rating and Underwriting (IBRU) System is available as a download from the Oracle E-Delivery system. Downloaded files are zipped. Prior to installation, please make sure the source machine(s) where SoftRater for WebLogic will be loaded has an unzip utility.

An unzip utility for most platforms is available on the E-Delivery download page.

Documentation from E-Delivery is in PDF format. Prior to installation, please make sure the source machine(s) where SoftRater for WebLogic documentation will be loaded has a PDF reader.

Files are downloaded with part numbers as file names. Please make note of the part numbers you have downloaded and the corresponding file name. You may be asked to provide the part numbers or the filename if you contact Oracle Support.

The SoftRater for WebLogic 4.0.1 zip file will contain:

- The 4.0.1-insbridge-wbl-eng Folder
 - insbridge.net.softmaterconfig.xml
 - IBSS_WL.ear
 - ojsp.jar

No license file is required.

If you are using Insbridge Framework Administrator and RateManager, SoftRater can be installed any time after the Insbridge Framework Administrator and RateManager have been installed. SoftRater must be installed prior to any users creating packages.

Manual History

New editions incorporate any updates issued since the previous edition.

Edition	Publication Number	Product Release	Publication Date	Comment
1 st Edition	P01-762-01	V 3.8.9	April 2008	WebLogic 9.2
2 nd Edition	P01-762-02	V 3.9.0	May 2008	WebLogic 9.2
3 rd Edition	P01-762-03	V 3.10	September 2008	WebLogic 9.2
4 th Edition	P01-762-04	V 3.11	December 2008	WebLogic 9.2
5 th Edition	P01-762-05	V 3.12	July 2009	WebLogic 9.2
6 th Edition	P01-762-06	V 3.13	December 2009	WebLogic 10.3
7 th Edition	P01-762-07	R 4.0	April 2010	WebLogic 10.3
8 th Edition	P01-762-08	R 4.0.1	August 2010	WebLogic 10.3

WEBLOGIC REQUIREMENTS

WebLogic 10.3.1 should be up and running prior to installing the .EAR file.

LOCATING THE CONFIGURATION FILES

We suggest creating a C:\Insbridge\config folder but you may use any folder name you want and you can place the folder anywhere you want. This folder will hold the necessary files for the SoftRater for WebLogic installation. Take note of the location and make sure you have created this folder prior to running the installation.

NOTE: *For the purposes of this guide, the location will be referred to as C:\Insbridge\config.*

The SoftRater for WebLogic zip file should be downloaded to the WebLogic server prior to configuration. Unzip the file. There will be an XML file, a .JAR file and an .EAR file inside.

- **ojsp.jar**
- **IBSS_WL.ear**
- **Insbridge.net.softraterconfig.xml**

Place these files in the C:\Insbridge\config folder.

NOTE: *It is important that the configuration path specified in the Adding a System Property to WL Server section of this document contain both the application and configuration files. These files need to be placed where you specify in the startWebLogic.cmd file.*

Once you have these files in place, do not move them.

SETTING UP WEBLOGIC

WebLogic 10.3 should be up and running prior to installing the .EAR file. If you need to create a domain, the following steps may be executed.

NOTE: *This is a suggested domain setup. Your setup may vary.*

It is not required that you set up a separate domain. If you do create a separate Insbridge domain, please verify that there are no port issues. The Insbridge .EAR file can be installed on an already existing domain.

CREATING A NEW SERVER DOMAIN

To create a new server domain, go to your **Start Menu→Oracle WebLogic→WebLogic Server 11gR1→Tools→ Configuration Wizard** and follow the wizard according to your company standards. In most cases, for the Insbridge application, a default basic configuration could be used.

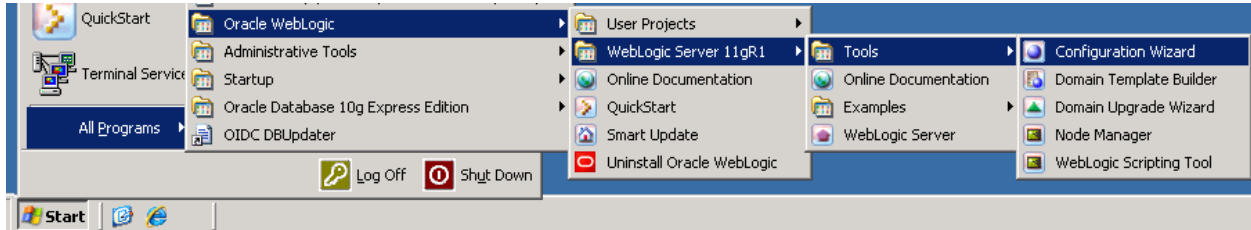


Figure 1 – Creating a New Server Domain

CONFIGURATION WIZARD

On the Welcome screen, you will want to create a new WebLogic domain.

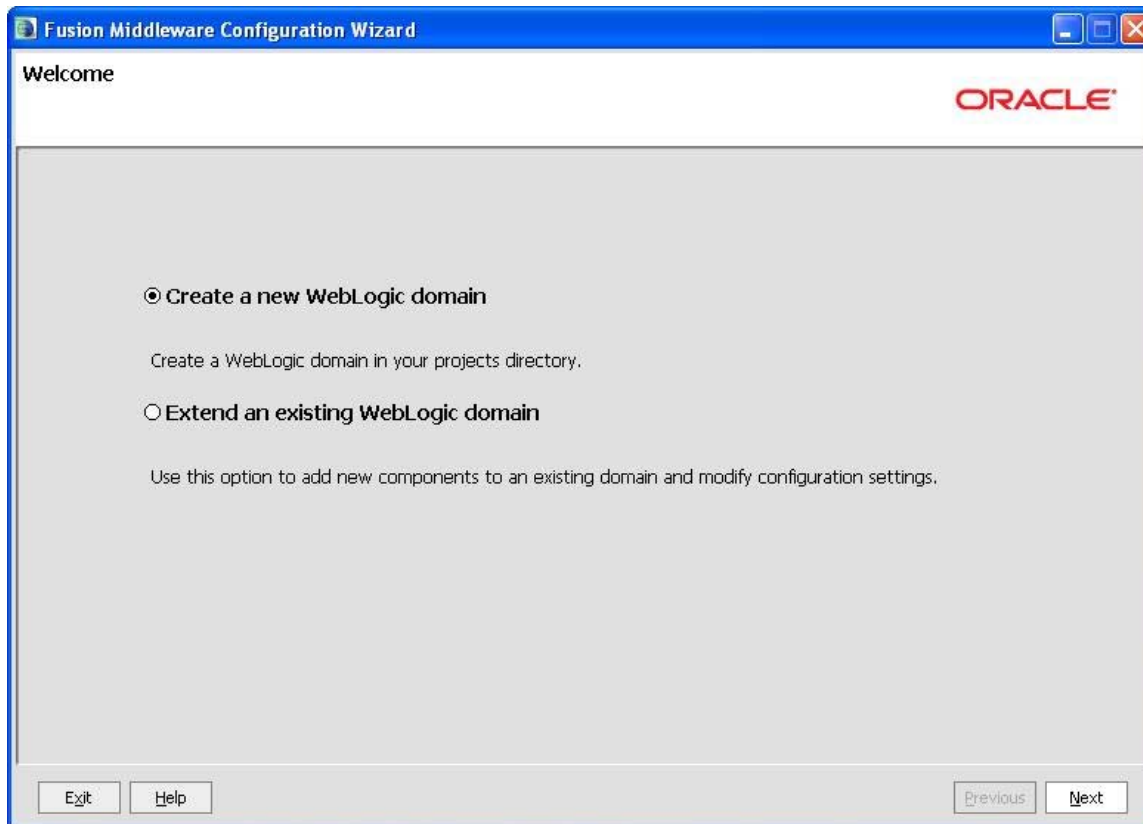


Figure 2 – Creating New WebLogic Domain

1. Select **Create a New WebLogic domain**.
2. Click **Next** to advance to the next screen.

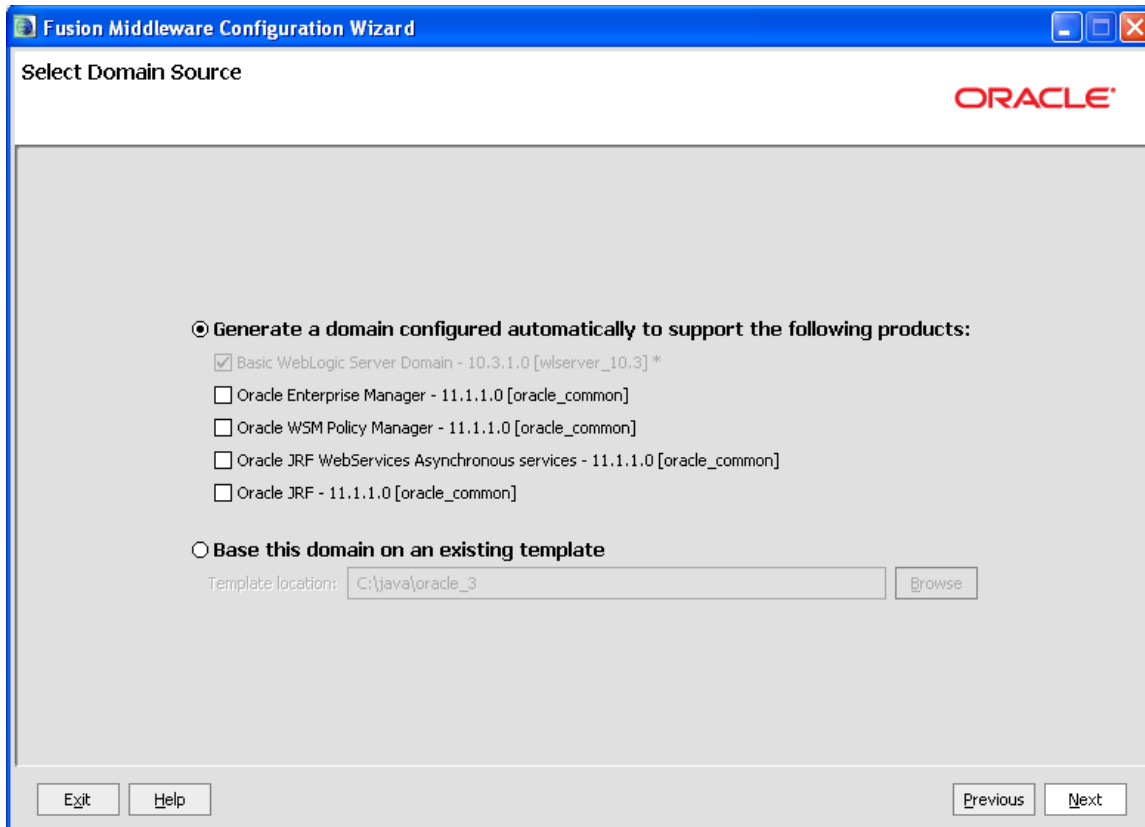


Figure 3 – Selecting Domain Source

3. For a basic installation, select **Generate a domain configured automatically to support the following products:** The **WebLogic Server** option is the only option you will need to select.
4. Click **Next** to continue.

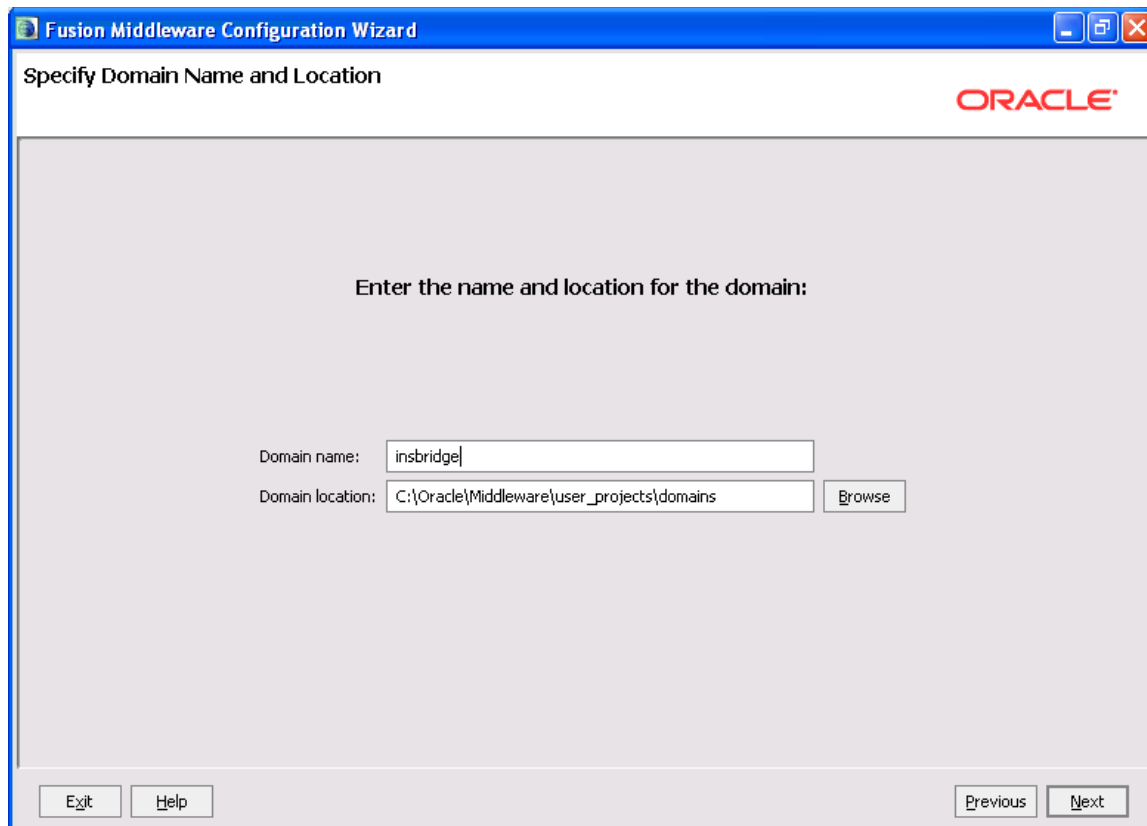


Figure 4 – Specifying Domain Name and Location

5. Specify the **Domain Name** and **Location**. The domain name can be anything that meets your company standards.
6. Click **Next** to continue.

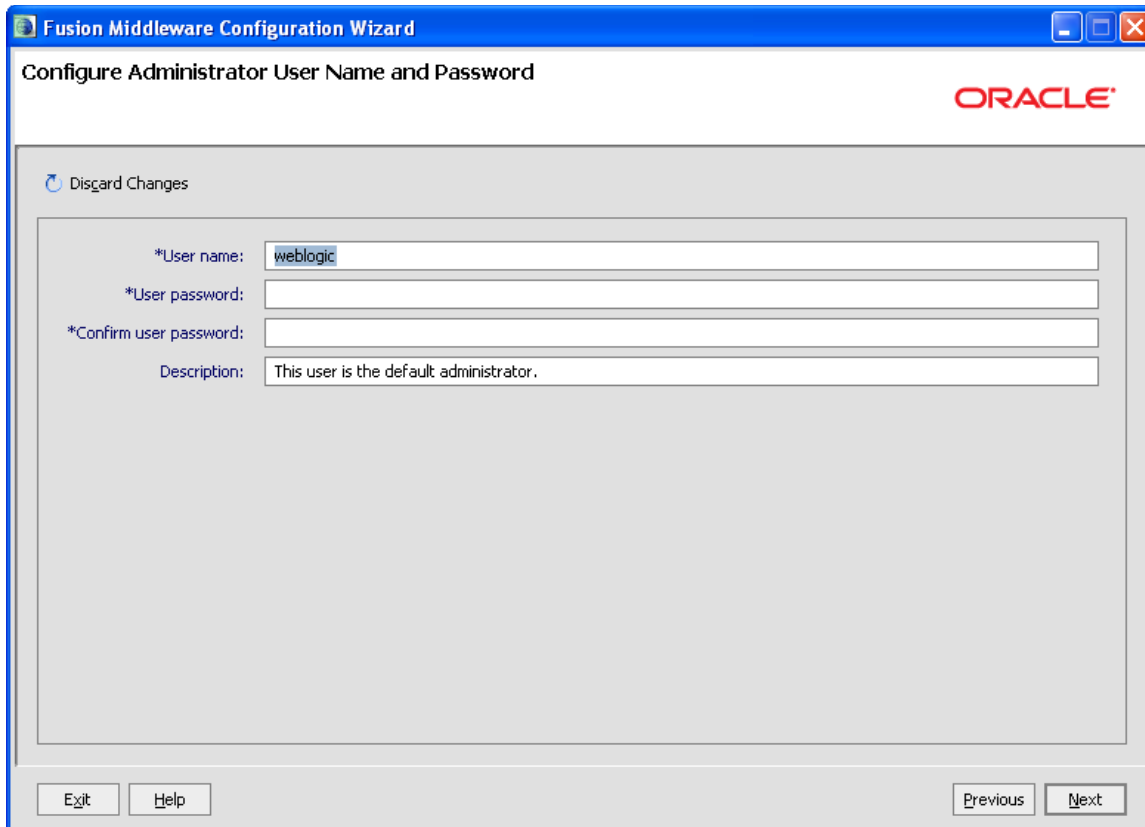


Figure 5 – Creating User Name and Password

7. Next, configure the Administrator User name and password. The **User name** and **password** are WebLogic, unless otherwise specified.
8. The **Description** is optional.
9. Click **Next** to continue.

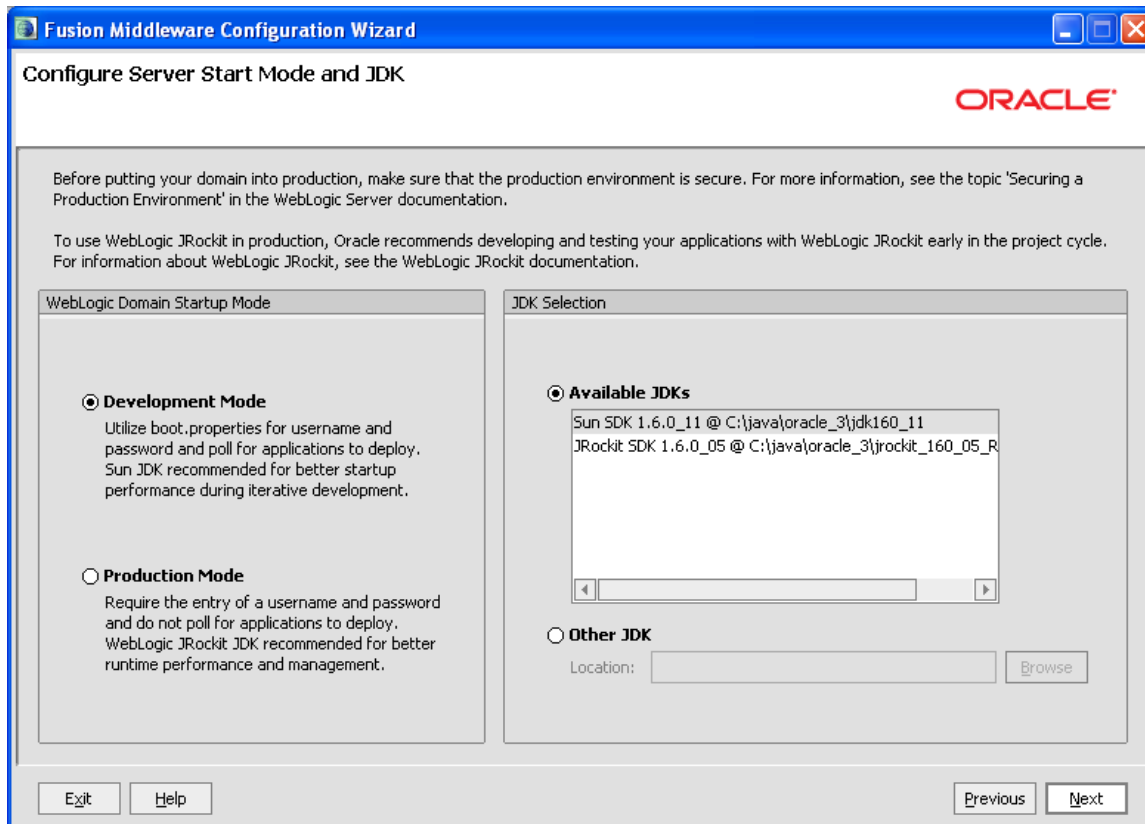


Figure 6 – Configuring Server Start Mode and JDK

10. Select **Development Mode** for the Startup Mode.
11. Select the supplied **Sun SDK** in the **Available JDKs** area.
12. Click **Next** to continue.

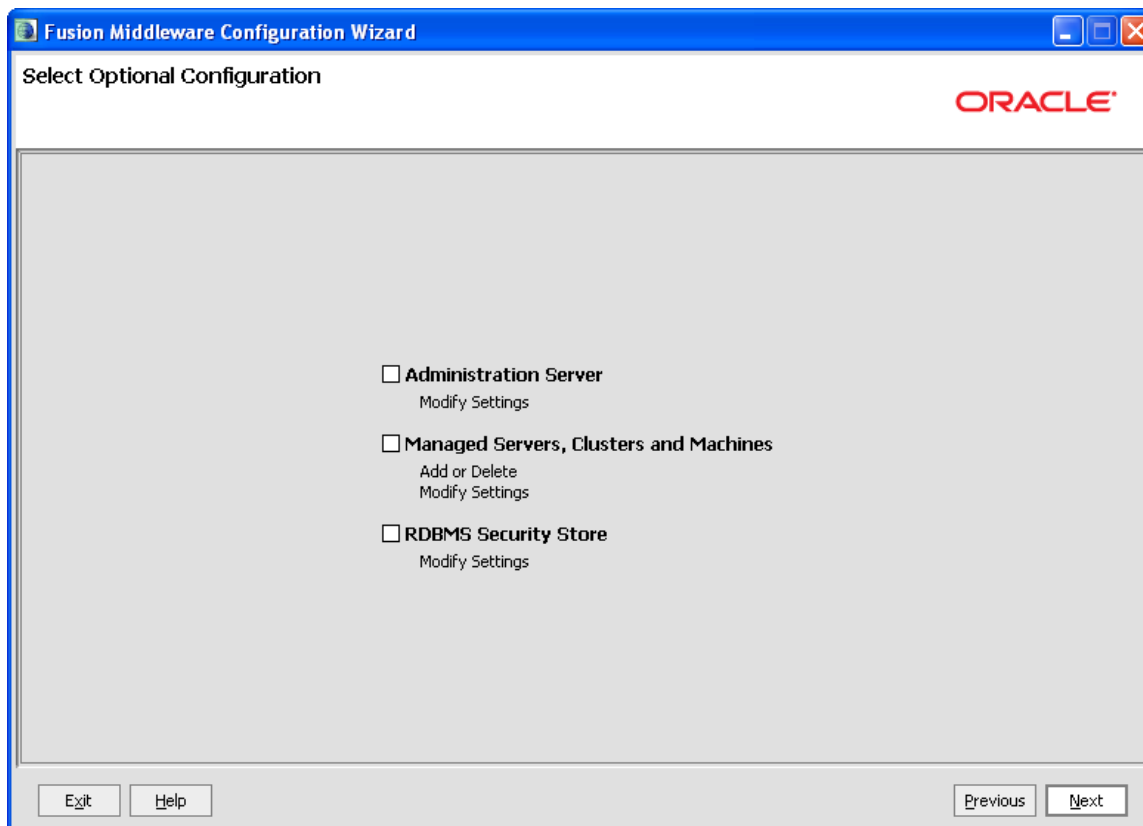


Figure 7 – Customizing Environment and Service Settings

13. These modifications are not required for basic installation.

14. Click **Next**.

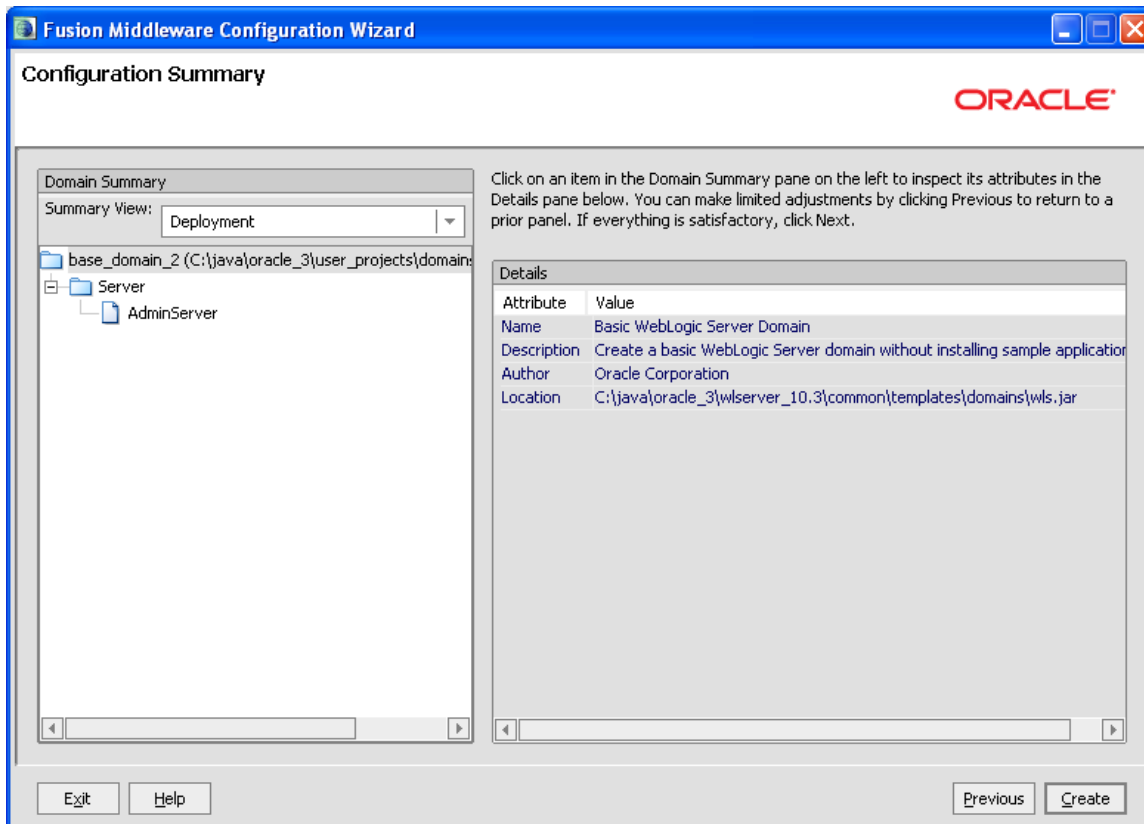


Figure 8 – Creating WebLogic Domain

15. No other changes are necessary. Click **Create**.

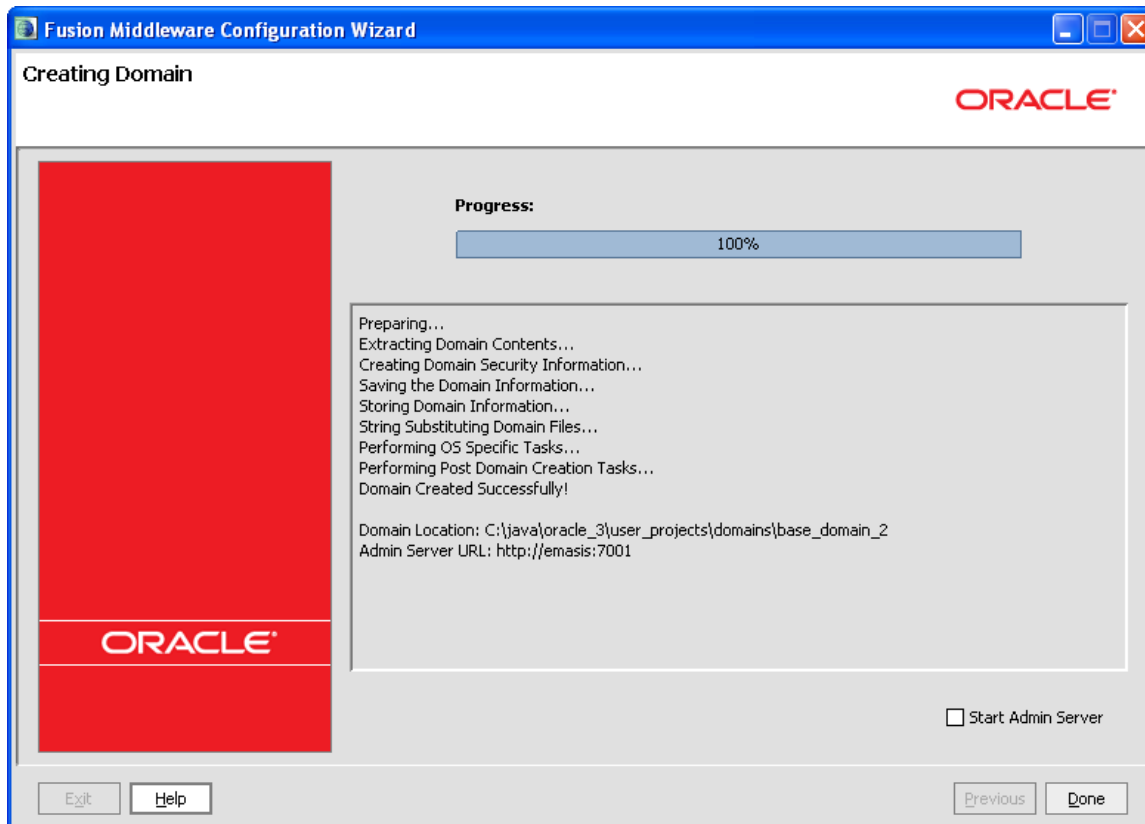


Figure 9 – Start Menu

16. WebLogic will begin the creation of the Domain. The progress bar will display 100% when complete.
17. Click **Done** to close the Wizard. The domain is ready to use.

ADDING A SYSTEM PROPERTY TO WL SERVER

The Inbridge application requires a shared variable on the WebLogic Server that points to the location of the configuration files.

In WebLogic, it is not possible to define variables as part of the Server JNDI. For this reason, you must create a Java System property in the server initialization that can be used by the application to retrieve the path that accesses the system configuration files.

NOTE: *If the server domain was running during these modifications, you will need to restart the server before proceeding.*

Adding to the WebLogic Server - Windows

1. In a Windows Explorer window, enter the server domain location, i.e. %Domain=Home%.

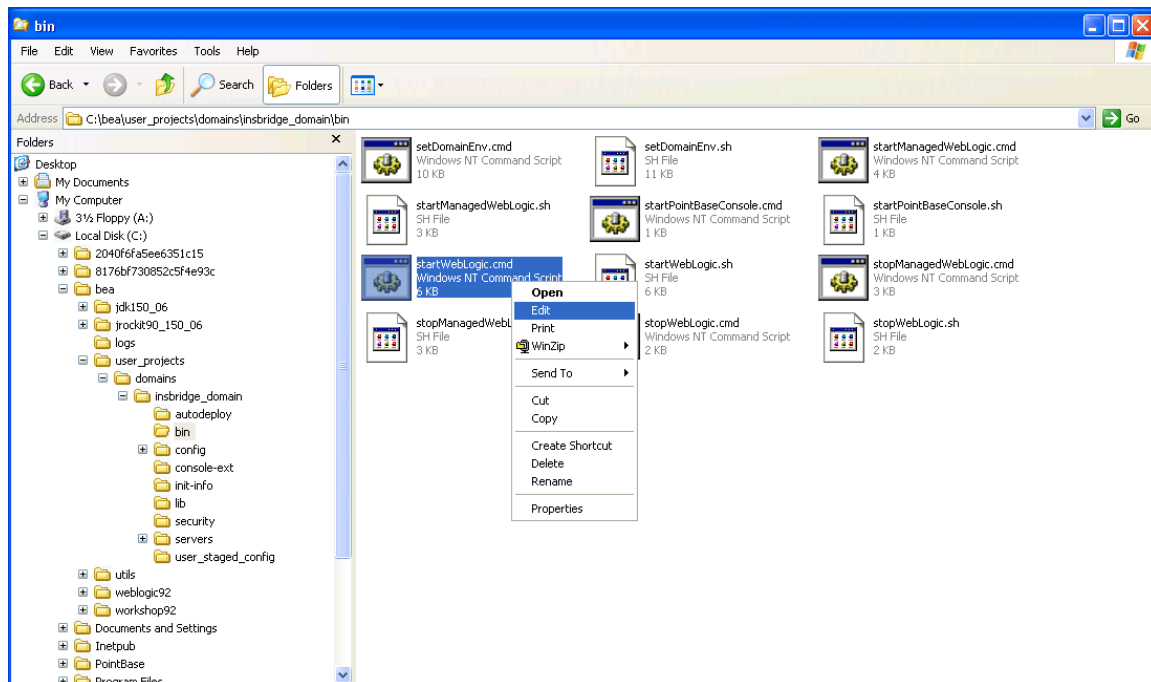


Figure 10 – startWebLogic.cmd File

2. In the “bin” folder locate the “startWebLogic.cmd” file. Make a backup of the “startWebLogic.cmd” file.
3. Open the “startWebLogic.cmd”file and right click to **Edit**. Scroll towards the end of the file.

```

if "%WLS_REDIRECT_LOG%"=="" (
%JAVA_HOME%\bin\java %JAVA_VM% %MEM_ARGS% %JAVA_OPTIONS% -Dweblogic.Name=%SERVER_NAME% -
Djava.security.policy=%WL_HOME%\server\lib\weblogic.policy %PROXY_SETTINGS% %SERVER_CLASS%
) else (
%JAVA_HOME%\bin\java %JAVA_VM% %MEM_ARGS% %JAVA_OPTIONS% -Dweblogic.Name=%SERVER_NAME% -
Djava.security.policy=%WL_HOME%\server\lib\weblogic.policy %PROXY_SETTINGS% %SERVER_CLASS%
>"%WLS_REDIRECT_LOG%" 2>&1
)

```

Figure 11 – Editing startWebLogic.cmd File

4. Locate the **DOS if instruction** that looks similar to the one in Figure 11. Your exact file may have slight variations.
5. In both conditions of this instruction you will need to insert the following system property declaration:

- `-DINSBRIDGE_APP_DIR="C:\Insbridge\config"`. If you copy, please verify valid characters have been entered.

In this declaration, add a system property to the Java Virtual Machine using the **-D** parameter, then specify **INSBRIDGE_APP_DIR** as the name of the new variable.

You must also specify the path where the configuration file will be located. i.e. **C:\Insbridge\Config**. Where **C:\Insbridge\config** is the folder you created earlier.

6. **Save** your changes.

```

if "%WLS_REDIRECT_LOG%"=="" (
%JAVA_HOME%\bin\java %JAVA_VM% %MEM_ARGS% %JAVA_OPTIONS% -Dweblogic.Name=%SERVER_NAME% -
Djava.security.policy=%WL_HOME%\server\lib\weblogic.policy -DINSBRIDGE_APP_DIR= "C:\Insbridge\Config"
%PROXY_SETTINGS% %SERVER_CLASS%
) else (
%JAVA_HOME%\bin\java %JAVA_VM% %MEM_ARGS% %JAVA_OPTIONS% -Dweblogic.Name=%SERVER_NAME% -
Djava.security.policy=%WL_HOME%\server\lib\weblogic.policy -DINSBRIDGE_APP_DIR= "C:\Insbridge\Config"
%PROXY_SETTINGS% %SERVER_CLASS% >"%WLS_REDIRECT_LOG%" 2>&1
)

```

Figure 12 – Edited startWebLogic.cmd File

7. The variable will be added to the Server the next time it is started.

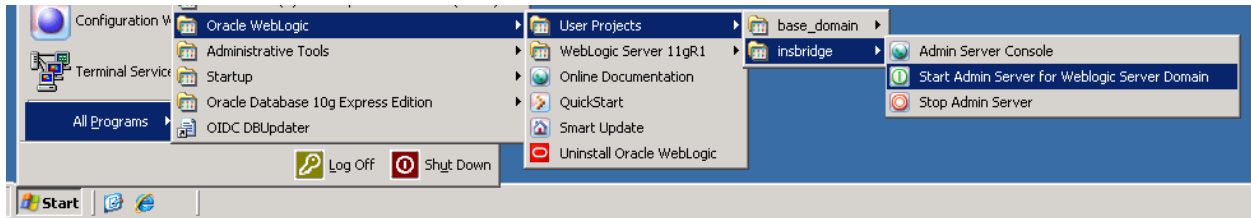
Adding to the WebLogic Server – UNIX

The procedure is similar in UNIX. Locate the **startWebLogic.sh** file. In many instances, the file will be located in: `..\Oracle\Middleware\user_projects\domains\insbridge\bin`. Open the file and right click to **Edit**. Scroll towards the end of the file and make the necessary changes.

WEBLOGIC MAIN CONSOLE

Starting the WebLogic Server

To start the WebLogic server, go to the “Start Menu→Oracle WebLogic→User Projects→<Your Server Domain>→Start Admin Server for WebLogic Server Domain”.



NOTE: Please do not close the command prompt window that starts the service. Closing the command prompt window will stop the webserver instance.

Accessing the WebLogic Main Console

The WebLogic Main Console can be accessed once the WebLogic server domain is running by typing <http://<ServerName or IP Address>:<Port>/console> on your browser. You will need the administrator password used when the server domain was created. i.e. <http://localhost:7001/console>



Figure 13 – Logging into WebLogic Server

Step 1: Installation of Required Library

The WebLogic Insbridge application requires one WebLogic library to be deployed on to the server prior to the application installation itself. This library will be shipped with the SoftRater for WebLogic application. Place this library anywhere on your disk and then proceed with the installation.

Library	Description
oracle.jsp.next (ojsp.jar)	Oracle Jsp library for ADF applications

Figure 14 – Oracle jsp library

Step 2: Editing on the WebLogic Main Console

The WebLogic administration console offers multiple configuration options. This guide will focus on the deployments features that can be accessed by clicking the highlighted **Deployments** link on the left hand of the console.

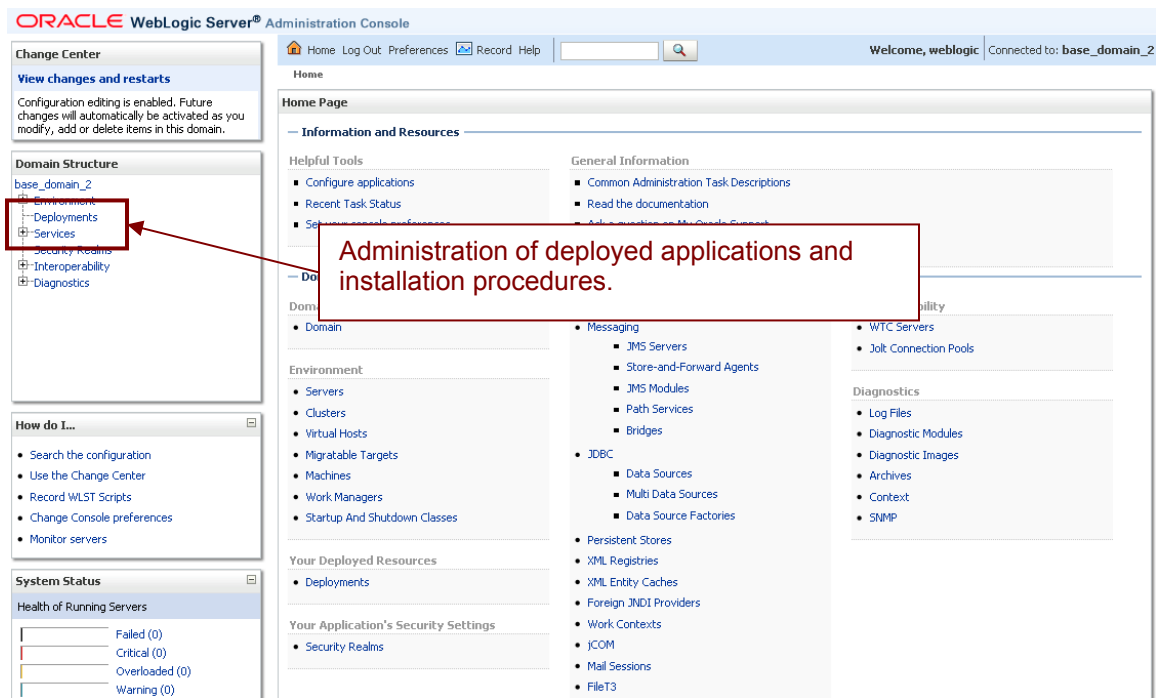


Figure 15 – WebLogic Console

1. Click the **Deployments** link. The screen will refresh with the Deployments Page.

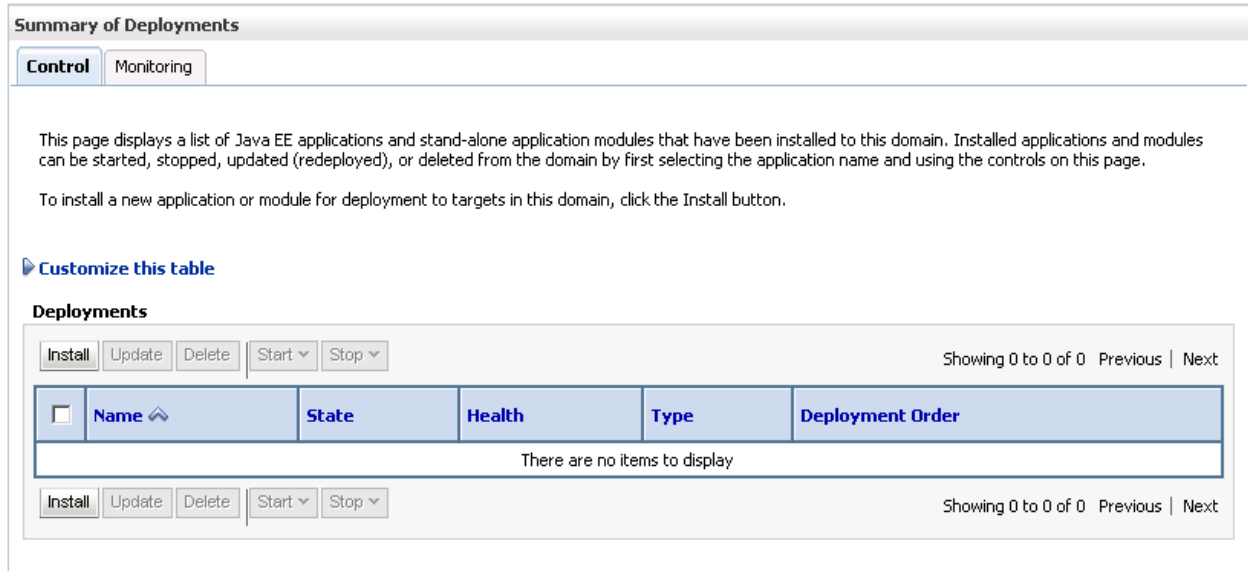


Figure 16 – Deployments Page

2. From the Summary of Deployments Page, click the **Install** button. The screen will refresh to the Install Application Assistant page.
3. The list of Locations will be displayed. Select the location where you placed the “ojsp.jar” file.
4. Select the “ojsp.jar” library.

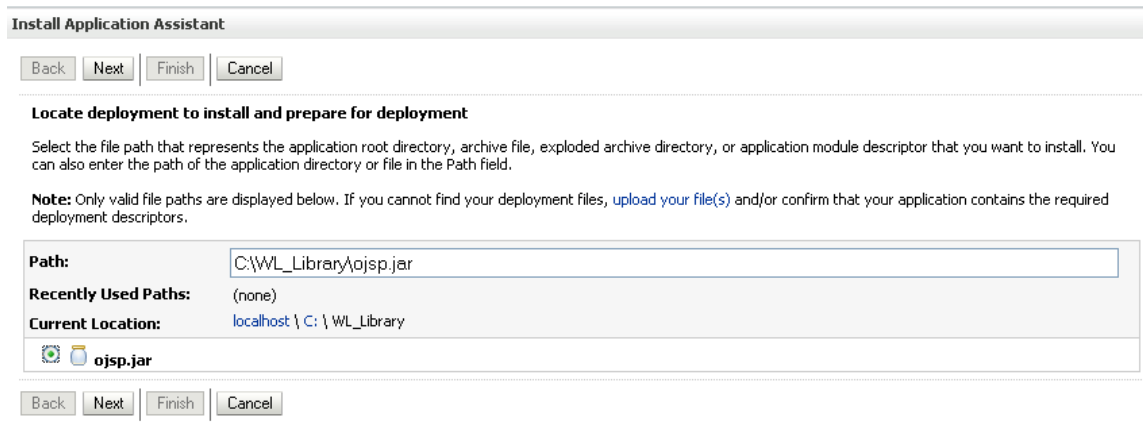


Figure 17 – List of Libraries

5. Click the **Next** button.
6. On the **Optional Settings** page, you will need to change the library name to “oracle.jsp.next”. Everything else can be set to the default values click **Finish**.

NOTE: You can navigate back to the previous folder by clicking the hyperlinks in the **Current Location:** path.

Install Application Assistant

Back Next Finish Cancel

Optional Settings

You can modify these settings or accept the defaults

General

What do you want to name this deployment?

Name:

Security

What security model do you want to use with this application?

DD Only: Use only roles and policies that are defined in the deployment descriptors.

Custom Roles: Use roles that are defined in the Administration Console; use policies that are defined in the deployment descriptor.

Custom Roles and Policies: Use only roles and policies that are defined in the Administration Console.

Advanced: Use a custom model that you have configured on the realm's configuration page.

Source accessibility

How should the source files be made accessible?

Use the defaults defined by the deployment's targets

Recommended selection.

Copy this application onto every target for me

During deployment, the files will be copied automatically to the managed servers to which the application is targeted.

I will make the deployment accessible from the following location

Location:

Provide the location from where all targets will access this application's files. This is often a shared directory. You must ensure the application files exist in this location and that each target can reach the location.

Back Next Finish Cancel

Figure 18 – Selecting Defaults

7. After the library has been added, you will be placed on the Summary of Deployments page. The library you added will be listed. Read the messages at the top of the screen and correct any error messages.
8. The library will be active.

PREPARATION FOR DB2 INSTALLATION

For DB2 installations please follow the DB2 instruction set below prior to installing EAR file.

For DB2 installations only.

1. Unzip the files to any designated location.
2. Locate and copy the DB2 jar file to the "APP-INF\lib" folder. The DB2 JAR file should be in your DB2 installation folder java directory. You may also download this file from IBM directly.
3. Run the batch file (ex: example.bat) from a console using the following parameters:
 - a- Java_Home folder. i.e.: "C:\java\oracle\jdk150_10"
 - b- Installation EAR filename. i.e.: **IBSS_WL.EAR**

Example: "DB2_Patch C:\java\oracle\jdk150_10\IBSS_WL.EAR"
4. Check the output messages from the batch file:
 - a- If Java_Home folder is invalid an error will be shown.

"The provided java_home path is not valid."
"Please provide a valid java_home folder in order to continue."
 - b- If parameters are valid, the application will show the compression ratio used for the DB2 jar file.
 - c- A message showing "SoftRater EAR Patch applied successfully..." will be displayed once the process completes.

NOTE: Upon completion of these steps, the batch file will copy the original EAR adding a "DB2_" prefix to the new filename. The new file "DB2_<EAR_FileName>" will be modified adding the DB2 jar file.

The original EAR should be located on the same folder as the batch file so it can be copied and renamed in the same operation.

NOTE: An example.bat file is also provided. You may need to change the Java_Home and EAR values in order to run it.

INSTALLATION OF THE .EAR FILE

NOTE: For SQL Server 2005, no additional steps are required. For DB2, please make sure you have completed the DB2 preparation requirements. See Chapter4, Preparing for DB2 Installation.

The installation of the Insbridge .EAR File begins in the same way as the installation of the WebLogic library.

1. From the Summary of Deployments Page, click the **Install** button. The screen will refresh to the Install Application Assistant page.
2. The list of Locations will be displayed. Click the location you need to reach the .EAR file.
3. Select the .EAR file.

Install Application Assistant

Back Next Finish Cancel

Locate deployment to install and prepare for deployment

Select the file path that represents the application root directory, archive file, exploded archive directory, or application module descriptor that you want to install. You can also enter the path of the application directory or file in the Path field.

Note: Only valid file paths are displayed below. If you cannot find your deployment files, [upload your file\(s\)](#) and/or confirm that your application contains the required deployment descriptors.

Path: C:\Insbridge\Config\IBSS_WL.ear

Recently Used Paths: C:\Insbridge\Config

Current Location: app003 \ C: \ Insbridge \ Config

IBSS_WL.ear

ojsp.jar

Back Next Finish Cancel

Figure 19 – Select the Application .EAR

4. Click **Next**.

5. Select **Install this deployment as an application** and click **Next**.

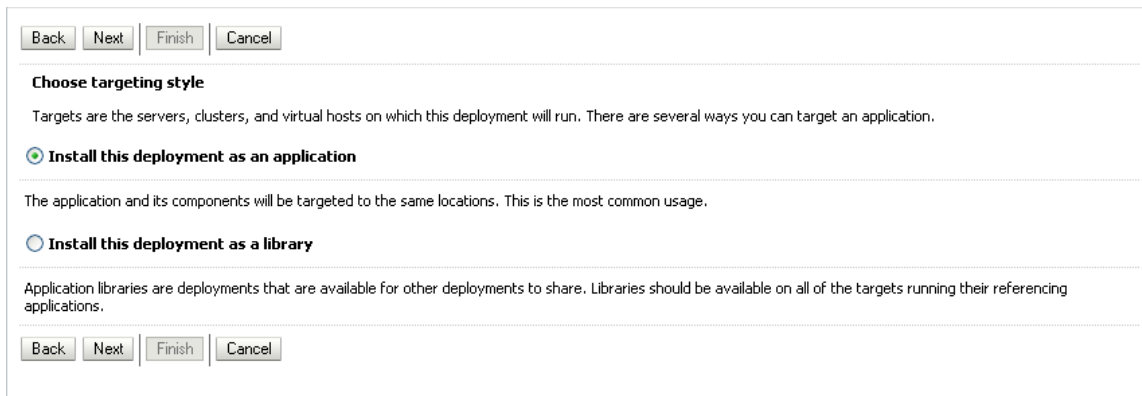


Figure 20 – Verify Application Installation

6. On the **Optional Settings** page, it is recommended that you keep the default values. The deployment name should appear as IBSS_WL.
7. Click **Finish**.
8. After the .EAR File has been added, you will be placed on the Summary of Deployments page. The .EAR File you added will be listed. Read the messages at the top of the screen and correct any error messages.

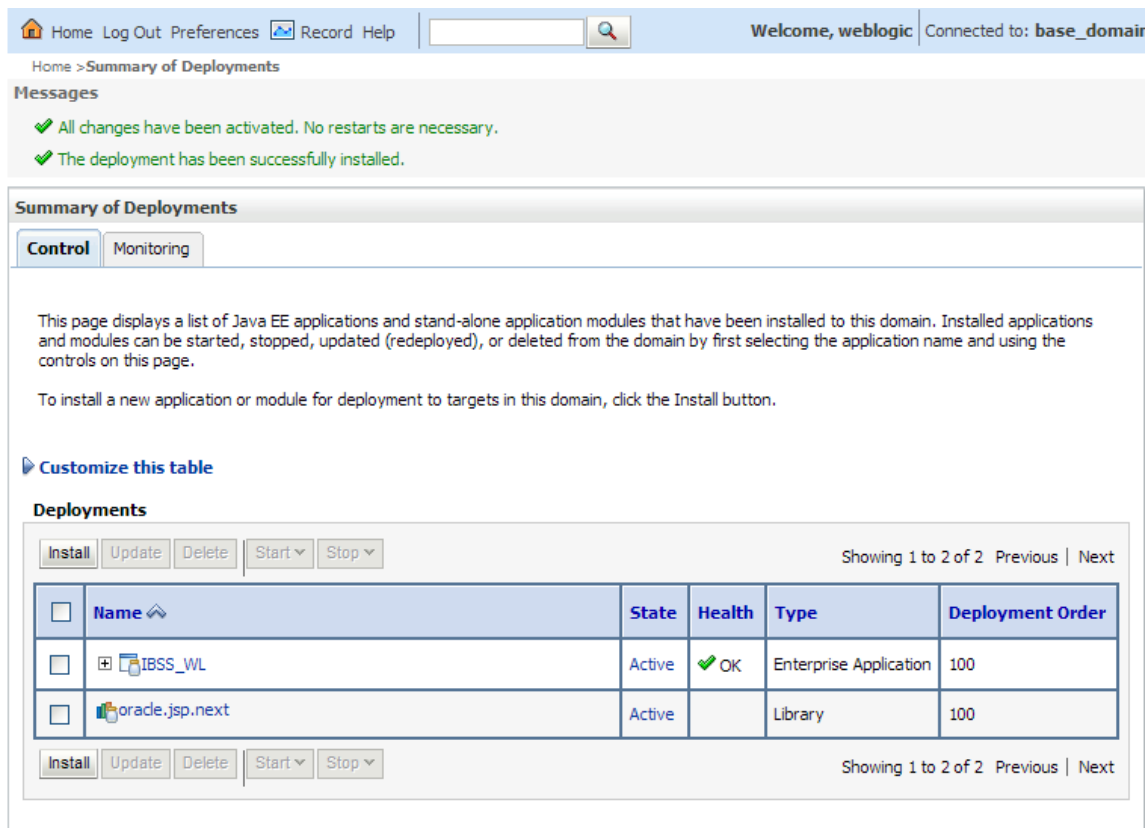


Figure 21 – Successful Installation

Project Composition

The following shows the project composition that should appear when the SoftRater for WebLogic application is expanded. Verify that all the components were successfully installed.

<input type="checkbox"/>	Name	State	Health	Type	Deployment Order
<input type="checkbox"/>	IBSS_WL	Active	OK	Enterprise Application	100
	Modules				
	IBSS			Web Application	
	InsBridgeEJB.jar			EJB Module	
	EJBs				
	SoftDataEJB			EJB	
	SoftRaterEJB			EJB	
	SoftServicesGatewayEJB			EJB	
	Web Services				
	SoftDataWS			Web Service	
	SoftRaterWS			Web Service	
	SoftServicesGatewayWS			Web Service	

Figure 22 – Project Composition

CREATING A SOFTRATER DATABASE

The Insbridge Framework Application container for the SoftRater J2EE EJB contains the JDBC connection drivers that support operational connectivity to the DBMS system listed before. It also contains vendor specific DDLs for the SoftRater operations database schema creation which can be altered by DBA's for setup compliance for varying corporate environments, i.e. TABLESPACE and SCHEMA target definitions.

To obtain Database Definition Language (DDL) scripts for a target DBMS type view the "SoftRater\DDL" subdirectory in the Insbridge IBFA installation directory.

i.e. C:\Program Files\Oracle\IGBU\Insbridge\SoftRater\DDL

Please allow the DBA to review the scripts before attempting to create a SoftRater database schema.

The SoftRater EJB data access system contains all the required JDBC drivers for connectivity to the support DBMS's. TCP/IP connection visibility to the DB Platform is required along with the database server system configured connection PORT for operational use of the SoftRater system. No other supplemental drivers or libraries are needed to establish a connection.

IMPORTANT: *It is strongly recommended that any database modification be performed by a qualified database administrator (DBA). The database setup procedures and tasks require the skill set of a database administrator. If you are not a database administrator, please stop. Improper setup may result in unwelcome changes to the database. Please consult with a qualified database administrator before proceeding.*

Microsoft SQL Server

JDBC Driver Class

"com.microsoft.jdbc.sqlserver.SQLServerDriver"

Supported Versions – 2005 SP/2 and 2008 SP/1

User Account Requirements

Create Table
Create Index
Execute on the SoftRater User Defined Stored Procedures

ORACLE

SoftRater database schema is support by all available ORACLE database platforms.

JDBC Driver Class

"oracle.jdbc.driver.OracleDriver"
Using prefix jdbc:oracle:thin:

Supported Versions – 10g, 11g

User Account Requirements

Create Table
Create Index
Query access to “SYS.OBJ\$”

IBM DB2

SoftRater database schema is supported on all available DB2 database platforms.

JDBC Driver Class

“com.ibm.db2.jcc.DB2Driver”
For Native AS400 – “com.ibm.as400.access.AS400JDBCdriver”

Supported Version – 9.1

User Account Requirements

Create Table
Create Index
Query access to “SYSIBM.SYSTABLES”

Configuration Settings

- **Required**
The query dynamics of the SoftRater system requires some modification to Configuration settings. The following Performance Configurations parameters required to the target SoftRater database.
Instance Level – ASLHEAPSZ >= 1024
Instance Level – QUERY_HEAP_SZ => 10240
Database Level – APPLHEAPSZ >= 1024
- **Recommended**
The query dynamics of the SoftRater system will benefit from the following modification to Configuration settings.

Instance Level – INTRA_PARRALLEL (Yes) – For Symmetrical Processing Machines (CPU >=2)

Database Level – DFT_DEGREE (-1) – For Symmetrical Processing Machines (CPU >=2). Allow the optimizer to determine the degree of intra-partition parallelism based on the number of processors and the type of query.

Native z/OS

Support for IBM DB2 for native z/OS requires a specific set of the DDL scripts. They are labeled in the `ddl/db2` directory with the ZOS DB2.ZOS prefix. DBA's should review these scripts, starting with the `DB2.ZOS.SETUP.sql` file that contains create templates for default; STORAGE GROUP, DATABASE, default TABLESPACE. All other table create scripts can be reviewed, altered and executed in any other to be consistent with chosen database standards.

ACCESSING THE APPLICATION

You may be able to access the application by typing <http://<ServerName or IP Address>:7001/IBSS>

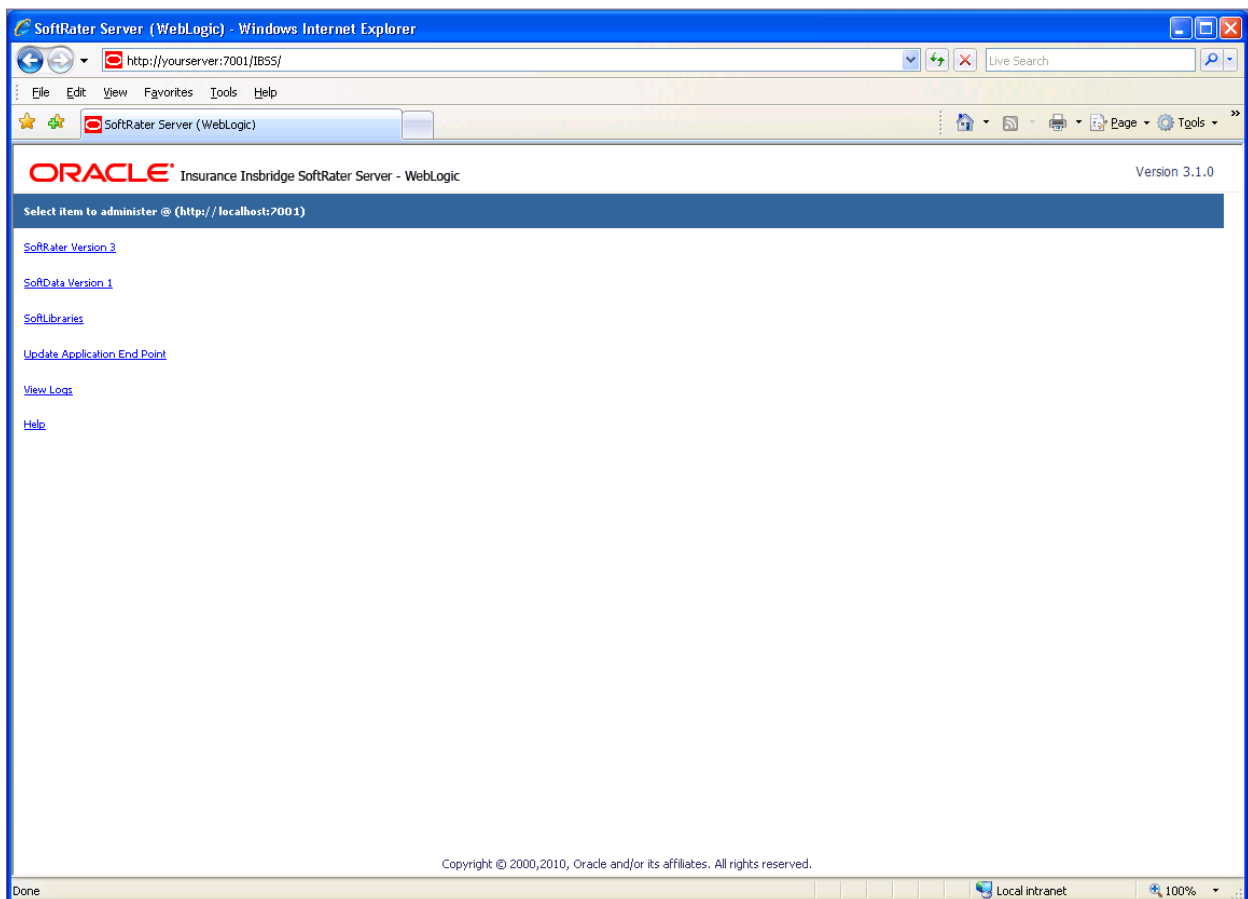


Figure 23 – IBSS Main Page

NOTE: Notice that if you changed the WebLogic default port (7001) during the Server Domain creation, you should change the default application port on the [“Update Application End Point”](#) option located in the IBSS main page before accessing the application WebServices and methods.

NOTE: The IBSS parameter in the application URL must be capitalized.

SQL SERVER UPGRADE

If you are utilizing SQL Server and want to keep your current Environment settings, you will need to edit the `insbridge.net.softraterconfig.xml` file.

1. Deploy the new .EAR file.
2. Open the `insbridge.net.softraterconfig.xml`. The `insbridge.net.softraterconfig.xml` file will be located in the folder you setup when you initially installed SoftRater for WebLogic. For example, `C:\Insbridge\config`.
3. Make a back-up copy of this file.
4. In the `insbridge.net.softraterconfig.xml` file, find this section:

```
<jdbcDriver provider="1" name="SQLSERVER">  
  <jdbcDriverClassName>com.microsoft.jdbc.sqlserver.SQLServerDriver</jdbcDriverClassName>  
  <jdbcUrlPrefix>jdbc:microsoft:sqlserver://</jdbcUrlPrefix>  
  <jdbcFetchSize>25</jdbcFetchSize>  
</jdbcDriver>
```

And replace it with this:

```
<jdbcDriver provider="1" name="SQLSERVER">  
  <jdbcDriverClassName>com.microsoft.sqlserver.jdbc.SQLServerDriver</jdbcDriverClassName>  
  <jdbcUrlPrefix>jdbc:sqlserver://</jdbcUrlPrefix>  
  <jdbcFetchSize>25</jdbcFetchSize>  
</jdbcDriver>
```

5. Restart the Application Server.

If you do not need your current environments:

1. Copy the existing `insbridge.net.softraterconfig.xml` and park it in a safe place. This is precautionary.
2. Copy the `insbridge.net.softraterconfig.xml` from the SoftRater for WebLogic 4.0.1 zip file.
3. Paste the new file over the current file. The `insbridge.net.softraterconfig.xml` file will be located in the folder you setup when you initially installed SoftRater for WebLogic. For example, `C:\Insbridge\config`.

If this is a new installation, you are not required to do any additional steps.

UPGRADING THE APPLICATION

Oracle Insurance Insbridge Rating and Underwriting Release 4.0.1 has been tested and certified on WebLogic 10.3.1.

Insbridge Rating and Underwriting is no longer tested and certified on WebLogic 9.2.

UPGRADE NOTICE

This notice is for customers currently running a SoftRater for Java engine release 3.12 or previous. This includes:

- **SoftRater for WebLogic**
- **SoftRater for WebSphere**
- **SoftRater for JBoss**

Necessary updates have been made to the SoftRater for Java engines:

- **SoftRater for WebSphere has been updated to SOAP version 1.1.**
- **SoftRater for WebLogic has been updated to SOAP version 1.2.**
- **SoftRater for JBoss has been updated to SOAP version 1.2.**

These changes mean that the WSDLs for the SoftRater for Java engines have been modified. Updated WSDL documents will need to be incorporated into any client calling application that communicates with SoftRater. If upgrades are done to the SoftRater for Java engines without updating the calling applications, the calling application will fail.

Please update a test environment prior to deploying to production. Install the .EAR file in a test environment to obtain the WSDL. Update your calling application and then test again. When testing is complete, you can upgrade your other environments.

NOTE: *Customers running a Windows only environment, without a Java component, will not be affected.*

These updates are for the SoftRater for Java engines only.

UPGRADING FROM A PREVIOUS RELEASE

Upgrading from Oracle Insurance Insbridge Rating and Underwriting **Release 3.13.4 or previous** to release 4.0.1 will require the previous .EAR and config files to be removed. The new .EAR file can then be deployed and the new config file must be implemented.

WSDLs have been updated in this release. Any application making a call to SoftRater will need to be updated with the new WSDL. If upgrades are done to SoftRater for WebLogic without updating the calling application, the calling application will fail.

NOTE: UPGRADE YOUR TEST ENVIRONMENT PRIOR TO PRODUCTION.

1. Make a back-up copy of the current config file. The configuration information will need to be re-entered in IBSS. The updated config file will not contain this information. This information cannot be directly imported but a copy of the original file may be helpful when re-entering.
2. Stop the WebLogic Service.
3. Delete the old .EAR file.
4. Start the WebLogic Service.
5. Remove the old config file. Unzip the SoftRater for WebLogic file. Please see [Locating the Configuration Files](#).
6. Verify that the system property is in the WebLogic Server. Please see [Adding a System Property to WL Server](#).
7. Install the required library. Please see [Step 1: Installation of Required Library](#).
8. Install the new .EAR file. Please see [Step 2: Editing on the WebLogic Main Console](#).
9. Enter IBSS. You will need to re-enter the config information. Please see the [Insbridge Rating and Underwriting SoftRater Server Guide](#).
10. If necessary, obtain any WSDL information from IBSS and update any calling application.
11. Test your configuration and updated calling applications before deploying to production.

NOTE: *You do not need to do an upgrade if you are running release 3.13.5 or 4.0*

CONTACTING SUPPORT

If you need assistance with an Oracle Insurance Insbridge Rating and Underwriting System product, please log a Service Request using My Oracle Support at <https://support.oracle.com/>.

Address any additional inquiries to:

Oracle Corporation
World Headquarters
500 Oracle Parkway
Redwood Shores, CA 94065
U.S.A.

Worldwide Inquiries:
Phone: +1.650.506.7000
Fax: +1.650.506.7200
oracle.com

TTY ACCESS TO ORACLE SUPPORT SERVICES

Oracle provides dedicated Text Telephone (TTY) access to Oracle Support Services within the United States of America 24 hours a day, seven days a week. For TTY support, call 800.446.2398.

INDEX

A

- Accessing
 - WebLogic Console, 17
- Adding
 - System Property, 15

C

- Command Prompt Window
 - Closing, 17
- Config File
 - Locating, 8
- config/ddl subdirectory, 24
- Configuration Settings
 - DB2, 25
 - DB2 Modifications, 25

D

- Database
 - IBM DB2 Support, 25
 - MS SQL Support, 24
 - ORACLE Support, 24
 - SoftRater, 24
- Database Definition Language Scripts, 24
- DB2
 - Installation Preparations*, 21
 - zOS, 25
- DB2 Database
 - Configuration Settings, 25
 - JDBC Driver Class, 25
 - Recommendations, 25
 - SoftRater Database Schema, 25
 - Supported Version, 25
 - User Account Requirements, 25
- DB2 Prefix
 - Added to Filename*, 20
- DBA, 24
- DBMS, 24
- DDL, 24
- DDL scripts
 - zOS on DB2, 25
- ddl\db2 Directory, 25
- Deployment
 - Optional Settings, 22
- Deployments
 - WebLogic Console, 18
- DINSBRIDGE_APP_DIR
 - Adding, 15
- Directory
 - ddl\db2, 25

E

- Editing
 - WebLogic Console, 18
 - WebLogic Server, 15
- Edition Notice, 2
- Example bat file, 20

I

- IBRU, vi
- IBSS, v
- Insbridge SoftRater Server, v

J

- JDBC Connection Drivers, 24

O

- Optional Settings
 - Deployment, 22
- ORACLE
 - SoftRater Database Schema, 24
- ORACLE Database
 - JDBC Driver Class, 24
 - Supported Version, 25
 - User Account Requirements, 24

P

- Performance Configurations Parameters
 - SoftRater Database, 25

R

- Requirements, 8
 - DB2 Database, 25
 - ORACLE Database, 24
 - SoftRater EJB Data Access System, 24
 - SQL Server, 24
 - TCP/IP Connection, 24

S

- Scripts
 - Database Definition Language, 24
- SoftRater
 - Supported Databases, 24, 25
- SoftRater Database, 24
- SQL Server
 - JDBC Driver Class, 24
 - SoftRater Database Schema, 24
 - Supported Version, 24

User Account Requirements, 24
Starting
WebLogic Server, 17
System
Adding Property, 15

T

TCP/IP Connection
To DB Platform, 24

W

WebLogic Port
7001, 26

Z

z/OS
BD2, 25
ZOS DB2.ZOS, 25