

***SeeBeyond™ eBusiness Integration Suite***

# e\*Xpressway Integrator OnRamp Setup Guide for Trading Partners

*Release 4.5.1*



The information contained in this document is subject to change and is updated periodically to reflect changes to the applicable software. Although every effort has been made to ensure the accuracy of this document, SeeBeyond Technology Corporation (SeeBeyond) assumes no responsibility for any errors that may appear herein. The software described in this document is furnished under a License Agreement and may be used or copied only in accordance with the terms of such License Agreement. Printing, copying, or reproducing this document in any fashion is prohibited except in accordance with the License Agreement. The contents of this document are designated as being confidential and proprietary; are considered to be trade secrets of SeeBeyond; and may be used only in accordance with the License Agreement, as protected and enforceable by law. SeeBeyond assumes no responsibility for the use or reliability of its software on platforms that are not supported by SeeBeyond.

e\*Gate, e\*Insight, e\*Way, e\*Xchange, e\*Xpressway, eBI, eBusiness Web, iBridge, Intelligent Bridge, IQ, SeeBeyond, and the SeeBeyond logo are trademarks and service marks of SeeBeyond Technology Corporation. All other brands or product names are trademarks of their respective companies.

© 2001 by SeeBeyond Technology Corporation. All Rights Reserved. This work is protected as an unpublished work under the copyright laws.

**This work is confidential and proprietary information of SeeBeyond and must be maintained in strict confidence.**

Version 20011017142640.

# Contents

---

## Chapter 1

<b>Introduction</b>	<b>1</b>
Overview	1
Intended Reader	1
About e*Xpressway Integrator OnRamp	1
Trading Partner requirements	2

---

## Chapter 2

<b>Getting Started</b>	<b>4</b>
Overview	4
Registering with the Trading Exchange	5
Setting up Internet security	7
Recommended Trusted Certificate Authority	8
Additional Trusted Certificate Authorities	8

---

## Chapter 3

<b>Installing e*Xpressway Integrator OnRamp</b>	<b>9</b>
Overview	9
Stage 1: Downloading, installing, and configuring e*Xpressway Integrator OnRamp	10
Downloading e*Xpressway Integrator OnRamp	10
Installing the OnRamp software	12
Configuring e*Xpressway Integrator OnRamp	15
Stage 2: Downloading your OnRamp Solution Package	21
Selecting and downloading your custom OnRamp Solution Package	21
Installing your custom OnRamp Solution Package	23
Stage 3: Signing up and testing	30
Testing communication	31
Create and edit a sample file	32
Transmit the Outbound File	32
Verify the Results	32
Stage 4: Troubleshooting	32

If your test message was not picked up by the server	33
Stage 5: Go Live	33

---

## Chapter 4

Operating e*Xpressway Integrator OnRamp	34
Starting and stopping your e*Xpressway Integrator OnRamp	34
Cleanup programs	35
Glossary	36
Index	39

# Introduction

This chapter provides an overview of e\*Xpressway™ Integrator OnRamp for Trading Partners and describes hardware requirements for installation.

This Chapter Includes:

- **“Overview” on page 1**
- **“About e\*Xpressway Integrator OnRamp” on page 1**
- **“Trading Partner requirements” on page 2**

---

## 1.1 Overview

e\*Xpressway Integrator OnRamp is the fastest solution for providing rapid connectivity between Trading Partners and Trading Exchanges. e\*Xpressway Integrator OnRamp provides an easy-to-use method for Trading Partners (buyers and sellers) to connect their existing systems with a Trading Exchange. You can expect a significant reduction in the time and cost to implement a trading solution.

The e\*Xpressway Integrator Configuration Tool and Web-based wizards allow you, the Trading Partner, to download e\*Xpressway Integrator OnRamp from a Trading Exchange’s web site, install it, and quickly configure it for your local operating environment.

### 1.1.1 Intended Reader

The reader of this guide is presumed to be a Trading Partner representative who is responsible for establishing, maintaining, and managing relations with Trading Exchanges.

---

## 1.2 About e\*Xpressway Integrator OnRamp

e\*Xpressway Integrator OnRamp provides a low-cost, efficient solution for connecting to Trading Exchanges. After your registration information is approved, the Trading Exchange Administrator will give you access to their Web-based download site. From there, you download the e\*Xpressway Integrator OnRamp software. After

e\*Xpressway Integrator OnRamp is completely installed, configured, and tested, the you can send transaction data to, and receive transaction data from the Trading Exchange.

The e\*Xpressway Integrator Web pages and application files reside on the server at the Trading Exchange. The server hosts the Trading Exchange's administration Web pages as well as the Trading Partners' registration and setup software.

After registering with and receiving approval from the Trading Exchange, the Trading Partner downloads, installs, and configures e\*Xpressway Integrator OnRamp on a local machine. e\*Xpressway Integrator OnRamp uses a customized OnRamp Solution to exchange transaction data with the Trading Exchange.

---

## 1.3 Trading Partner requirements

To use e\*Xpressway Integrator OnRamp to integrate with an Trading Exchange, you need the following:

- 1 A dedicated, clean PC (a clean PC has only the Operating System installed) with:
  - Intel Pentium III or equivalent AMD Processor, 800Mhz minimum
  - 512 Mb RAM
  - Windows 2000 with Service Pack 2, or Windows NT4.0 with Service Pack 6a or above
  - Microsoft Internet Explorer 5.0 or later with 128-bit encryption enabled
  - 1Gb free disk space for installation and operational data
  - A TCP/IP network connection
- 2 Highly available, high-speed Internet service (T1, DSL, etc.)
- 3 All-access System Administrator privileges
- 4 A registered Domain name for your Web server

If you do not currently have a registered Domain name, contact your Trading Exchange for assistance.
- 5 Experience with browsers and network e-mail system technology
- 6 A file archive utility, such as PKUnzip, WinZip, Jar, or the equivalent

If you do not have a file archive utility, you can download an evaluation version of WinZip from <http://www.winzip.com/>.
- 7 Private key and certificate files

For information on acquiring private key and certificate files, see **“Setting up Internet security” on page 7.**

**Note:** *Additional disk space will be required to process and queue the data that e\*Xpressway processes; the amount necessary will vary based on the type and size of the data being processed and any external applications performing the processing.*

# Getting Started

This chapter describes how to get started as a Trading Partner with e\*Xpressway Integrator OnRamp.

This Chapter Includes:

- **“Overview” on page 4**
- **“Registering with the Trading Exchange” on page 5**
- **“Setting up Internet security” on page 7**
- **“Recommended Trusted Certificate Authority” on page 8**

---

## 2.1 Overview

Going forward, it is assumed that you know the Trading Exchange you wish to join and how to get to the **Trading Partner Registration** Web page.

Getting started as a Trading Partner using e\*Xpressway Integrator OnRamp consists of:

- Using your browser to go to the Trading Exchange’s registration page
- Registering with the Trading Exchange
- Setting up your Internet security system
- Receiving approval from the Trading Exchange to become a Trading Partner
- Logging into the Trading Exchange Web site
- Downloading the e\*Xpressway Integrator OnRamp software
- Installing the OnRamp files onto your local machine
- Configuring the OnRamp system to communicate with the Trading Exchange
- Downloading and the customized OnRamp Solution Package from the Trading Exchange Web site
- Installing the customized OnRamp Solution Package on your local machine



- Submitting your OnRamp URL to the Trading Exchange
- Receiving notification that your URL has been added to the Trading Exchange
- Testing communications
- Going live

---

## 2.2 Registering with the Trading Exchange

The first step in setting up membership in a Trading Exchange is providing information about you and your Company to the Trading Exchange. After you register, the Trading Exchange will review your registration information and you will receive approval via e-mail.

### To register with the Trading Exchange

- 1 Start your browser.
- 2 Go to the Trading Exchange Web site's main page, for example:

**HTTP://<domain>trade/with/<tradingexchange>**

where:

<**domain**> is the Web server domain name, and <**tradingexchange**> is the name of the Trading Exchange you want to join

The screenshot shows the 'Registration: Contact Information' form on the Trading Exchange website. The form is titled 'Registration: Contact Information' and contains several sections: 'Company Name' (text field with 'Your Company, Inc.'), 'Company Address' (text field with 'United States'), 'Street Address' (text field with '555 Hunt Road Suite 555 Carlington, NM 88998'), 'Contact Person for Account' (text fields for 'Contact Name', 'Title', 'Phone', and 'Email Address'), 'Login Information' (text fields for 'Password Desired' and 'Confirm Password Desired'), and 'Trading Partner Classifications' (text field for 'Expected B2B message traffic'). A 'Next' button is located at the bottom right of the form. The website header includes the 'Trading Exchange' logo and the 'SEE BEYOND.' logo. The footer contains a copyright notice for 2001 SeeBeyond Technology Corporation.

**Registration: Contact Information**

Company Name:

**Company Address:**

Country:

Street Address:

**Contact Person for Account:**

Contact Name:

Title:

Phone:

Email Address:

**Login Information:**

Password Desired (case sensitive):

Confirm Password Desired (case sensitive):

**Trading Partner Classifications:**

Expected B2B message traffic:

[Main](#) | [Register](#) | [Login](#) | [Help](#)

Please contact our [webmaster](#) with questions or comments.  
© 2001 SeeBeyond Technology Corporation. All Rights Reserved.


- 3 On the main page, click the **Register** link.
  - 4 The **Registration** page appears. On the **Registration** page, fill in all the required fields.
  - 5 Click **Next**.
- The **Thank you** page appears.

The screenshot shows the 'Thank you' page on the Trading Exchange website. The page has a blue background and contains the following text: 'Thank you.', 'Your application is being processed now. Your user name and password will be Emailed to you shortly. You'll use this login information to enter the TE, Inc. e\*Xpressway Integrator website and get your software.', and 'Welcome to Trading Exchange, Inc!'. Below the text is an envelope icon and the text 'Once you have received Email confirmation, you can login.' The website header includes the 'Trading Exchange' logo and the 'SEE BEYOND.' logo. The footer contains a copyright notice for 2001 SeeBeyond Technology Corporation.

**Thank you.**

Your application is being processed now. Your user name and password will be Emailed to you shortly. You'll use this login information to enter the TE, Inc. e\*Xpressway Integrator website and get your software.

**Welcome to Trading Exchange, Inc!**

 Once you have received **Email confirmation**, you can [login](#).

[Main](#) | [Register](#) | [Login](#) | [Help](#)

Please contact our [webmaster](#) with questions or comments.  
© 2001 SeeBeyond Technology Corporation. All Rights Reserved.

Your registration request is listed with the Trading Exchange. When you are approved, you will receive a Welcome message via e-mail.

If your application for Trading Exchange membership is at first denied, and then reconsidered and approved, you will not need to re-register.

**Important:** *If your company has two or more divisions and you are required to manage two or more instances of e\*Xpressway Integrator OnRamp, you must use separate e-mail addresses for each instance.*

---

## 2.3 Setting up Internet security

If your Trading Exchange requires you to have a secure connection, make sure you have the necessary security elements in place before downloading and installing e\*Xpressway Integrator OnRamp.

If a secure connection is required, you must have the following on your computer or server:

- **A Security Certificate:** An electronic document that establishes credentials when performing transactions over the Internet.
- **A Private Key:** An encryption/decryption key known only to you.
- **A Public Key:** A value provided by a designated authority as a key that, when combined with a private key derived from the public key, can be used to effectively encrypt messages and digital signatures. This key is automatically generated and is provided to you by a **Certificate Authority (CA)**.

A Certificate Authority is a company that issues and manages security credentials and public keys for message encryption; for example, *VeriSign*. Your security components must be acquired from a Certificate Authority.

To acquire your Certificate and Keys, contact your preferred CA and order them. After you pay a fee, your Certificate will be sent to you within a few days via e-mail.

When you receive your Certificate from the CA, you need to do the following:

- 1 Open the Certificate e-mail or file.
- 2 Select the contents between the header and trailer text.  
Do not include the header or trailer text.
- 3 Copy the contents of the Certificate e-mail or file.
- 4 Create a new text file.
- 5 Paste the Certificate file contents into the empty file.
- 6 Save the new file as **<mymachinename>.cert**

where:

**<mymachinename>** is the name of your dedicated e\*Xpressway Integrator OnRamp computer. (The **.cert** extension is arbitrary; Certificate and Key files can have any extension, but the extension you use should imply the contents of the file.)

Before installing the OnRamp software, you need to generate your Private Key file.

**Note:** *Your Private Key file is created as part of the process of obtaining your Certificate. Make sure you save it for use with e\*Xpressway Integrator OnRamp.*

Place both your Certificate and Private Key files in their permanent location on your e\*Xpressway Integrator OnRamp computer. Remember the location of these files; you will be required to provide the location when you install e\*Xpressway Integrator OnRamp.

### 2.3.1 Recommended Trusted Certificate Authority

**VeriSign** is the recommended Trusted Certificate Authority for e\*Xpressway Integrator OnRamp users with average computing experience. On their Web site, VeriSign offers step-by-step instructions for acquiring a Certificate and Private Key.

e\*Xpressway Integrator OnRamp requires 128-bit SSL encryption. If your current SSL encryption level is not at 128-bit, you must purchase an upgrade.

**Note:** *Note: The steps below are correct as of the date of this release of e\*Xpressway Integrator OnRamp. However, these steps can be invalidated by interim changes made to the VeriSign Web site.*

To acquire the recommended Certificate and Key, do the following

- 1 From your browser, go to <http://www.verisign.com/>.
- 2 On the main menu banner at the top of the page select **Products**.
- 3 Under the **Retail Services** heading, click the **SSL Certificates** link.
- 4 Under the **Secure Site Services** heading, click **Buy**.
- 5 Follow the purchasing instructions on the Web site.

**Note:** *During the process of obtaining your Certificate, you will assign a **Private Key Password** to yourself. You will need this password for OnRamp configuration. Store it in a safe location on your computer, and remember where it is.*

### Additional Trusted Certificate Authorities

The following Trusted Certificates are also supported by e\*Xpressway Integrator OnRamp, but step-by-step instructions are NOT offered on their Web sites, making it much more difficult for users with limited-to-average computing experience to acquire a Certificate and Key:

- GETCyberTrustGlobalRoot.cer (<http://www.baltimore.com>)
- MicrosoftRootAuthority.cer (<http://www.microsoft.com>)
- SecureServerCertificationAuthority.cer (<http://www.rsasecurity.com>)
- ThawtePremiumServerCA.cer (<http://www.thawte.com>)
- ThawteServerCA.cer (<http://www.thawte.com>)

For more information on installing e\*Xpressway Integrator OnRamp, see **[“Installing e\\*Xpressway Integrator OnRamp” on page 9.](#)**

# Installing e\*Xpressway Integrator OnRamp

This chapter describes how to install e\*Xpressway Integrator OnRamp and configure it for your operating environment.

This Chapter Includes:

- “Overview” on page 9
- “Stage 1: Downloading, installing, and configuring e\*Xpressway Integrator OnRamp” on page 10
- “Stage 2: Downloading your OnRamp Solution Package” on page 21
- “Stage 3: Signing up and testing” on page 30
- “Stage 4: Troubleshooting” on page 32
- “Stage 5: Go Live” on page 33

---

## 3.1 Overview

Installing e\*Xpressway Integrator OnRamp consists of downloading, extracting, and configuring the e\*Xpressway Integrator OnRamp files, selecting the correct OnRamp Solution Package, testing communication with the Trading Exchange and, if necessary, finding and correcting any problems.

After receiving e-mail confirmation from the Trading Exchange Administrator, do the following before you start the installation:

- 1 Log into the Trading Exchange Web site.  
The Trading Exchange should already have supplied you with the URL.
- 2 Go to the first **Member** page.
- 3 On the **Member** page, click the **Download** link to download the *Trading Partner Readiness Checklist* PDF file to your local machine.
- 4 Print the document.
- 5 Gather all the necessary information and fill out the Checklist.
- 6 Keep the Checklist with you until you go live.

## 3.2 Stage 1: Downloading, installing, and configuring e\*Xpressway Integrator OnRamp

After receiving e-mail confirmation from the Trading Exchange Administrator, you can log into the Member pages and start the process of becoming a Trading Partner.

### 3.2.1 Downloading e\*Xpressway Integrator OnRamp

The Member pages provide a step-by-step process that will help you quickly and easily set up your Trading Exchange. The stages consist of:

**Stage 1: Download OnRamp** - Download, install, and configure the OnRamp software.

**Stage 2: Customize OnRamp** - Download a custom e\*Xpressway Integrator OnRamp Package, and install it on your machine.

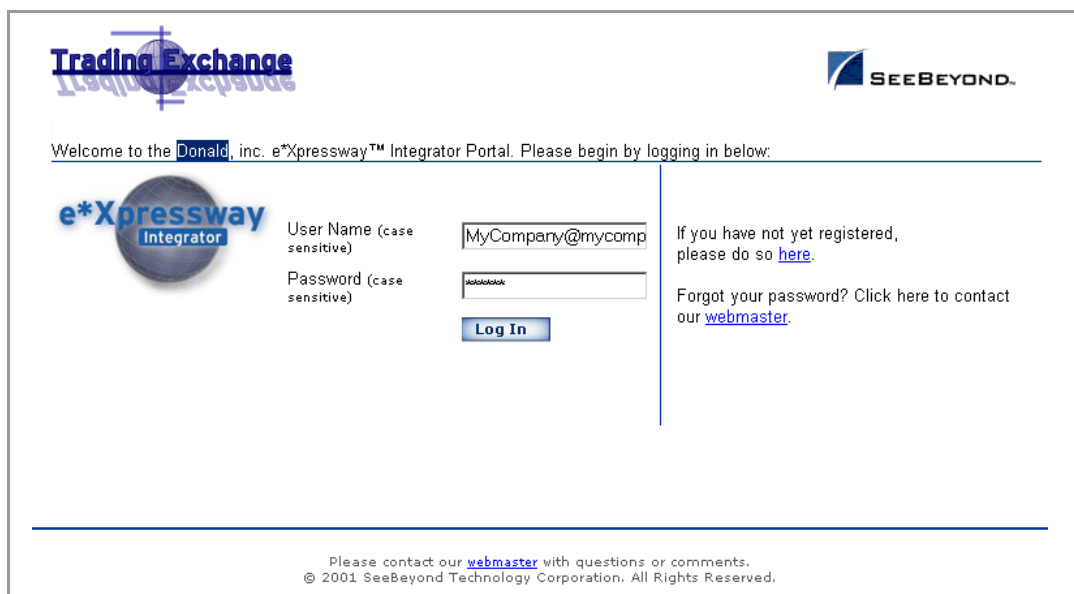
**Stage 3: Signup and Test** - Provide the Trading Exchange with your URL and test communications.

**Stage 4: Troubleshooting** - Troubleshoot and fix problems, if any.

**Stage 5: Go Live** - Start trading with the Trading Exchange.

To download e\*Xpressway Integrator OnRamp

- 1 Start your browser and go to the Trading Exchange Member page.
- 2 On the Member Page, click the **Login** link to go to the Login page.



- 3 On the Login page, type your **User Name** and **Password**.
- 4 Click **Log In**.

The Trading Exchange Main page appears.

**Trading Exchange** **SeeBeyond**

[Main](#) [Help](#) | [Log Out](#)

**e\*Xpressway Integrator™**

**Stage 1: Download OnRamp** | Stage 2: Customize OnRamp | Stage 3: Signup & Test | Stage 4: Troubleshooting | Stage 5: Go Live

e\*Xpressway Integrator OnRamp: **Secure HTTP, Windows 2000**  
 When you have completed the Trading Partner Readiness Checklist, you can download your OnRamp software as the initial step in an easy installation process.

Complete the following steps:

1. Click **Download** to download OnRamp. Save the .zip file to a directory on your computer.
  - [Download](#)
2. Unzip the file into a directory on your hard drive. Do not unzip the file onto your desktop.

**Note:** The directory path must not contain spaces.

3. In the directory containing the unzipped files, locate and run **setup.cmd**.
4. Follow the easy installation instructions.
5. When the installation is complete, locate the **eXpressway** directory that was created on your hard drive by the install program.
6. Locate the **Client** folder, then the **Docs** folder under there.
7. In the **Docs** folder, double-click on eXi\_Setup\_TP.pdf. This document is the e\*Xpressway Integrator Setup Guide for Trading Partners in PDF format. Read it and use it as a reference as you continue through the process. Adobe Acrobat Reader is required.

For more information, click [Help](#).

---

After you have successfully installed your software, click **Next** to move on to **Customize OnRamp**.

[Next](#) ►

---

[Main](#) | [Help](#) | [Log Out](#)

Please contact our [webmaster](#) with questions or comments.  
 © 2001 SeeBeyond Technology Corporation. All Rights Reserved.

- 5 Carefully read all the instructions on the page.
  - 6 Click the **Download** link to download e\*Xpressway Integrator OnRamp.
  - 7 Save the file to disk.
- Remember where you save the file.

### 3.2.2 Installing the OnRamp software

The OnRamp software must be extracted from the package and distributed to the appropriate folder.

To install the OnRamp files

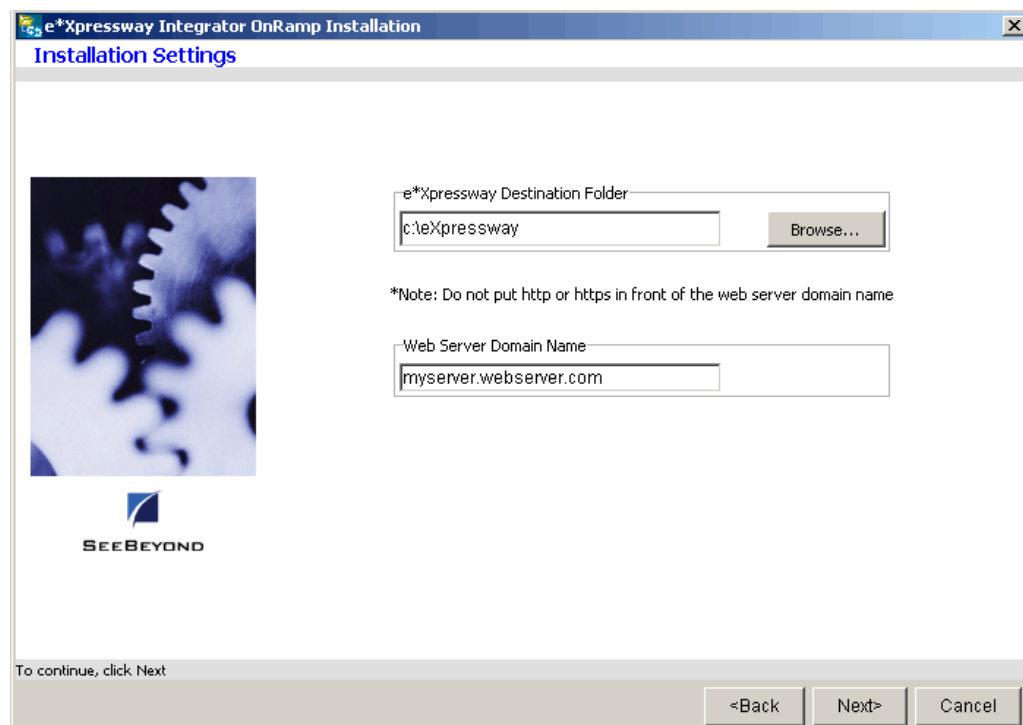
- 1 On your local machine, go to the location where you saved the file.
- 2 Using a file archive utility (such as PKUnzip, WinZip, Jar, or equivalent), open the e\*Xpressway Integrator Onramp .zip file.
- 3 If you are using WinZip, on the **Extract** dialog box, do the following:
  - Select **All files**.
  - Check **Overwrite existing files**.
  - Check **Use folder names**.
- 4 Extract the installation program files, placing them in a temporary location on your local machine.

**Note:** If you do not have a file archive utility, you can download an evaluation version of WinZip from <http://www.winzip.com/>.

**Important:** Put the files in a folder. Do not place the files on your desktop.

- 5 In the folder where you saved the unzipped files, double-click **setup.cmd** to install e\*Xpressway Integrator OnRamp into the specified folder.

The **Installation Settings** dialog box appears.



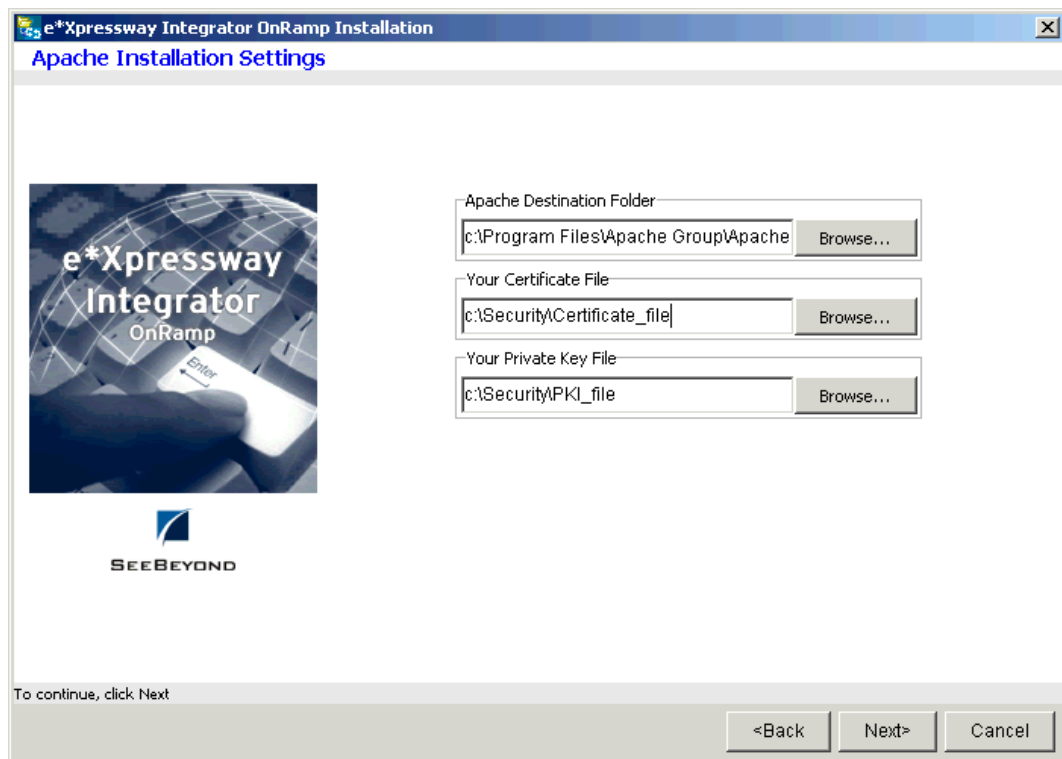


- 6 In the **e\*Xpressway Destination Folder** box, the folder into which the files should be installed is already set by the installation utility.

**Note:** *The installation utility detects and suggests the appropriate target directory. Do not change this directory setting unless you are directed to do so by SeeBeyond support personnel. If you must install into a different directory, do not use special characters (such as “#” or “\*”) or spaces in the path.*

- 7 In the **Web Server Domain Name** box, type the name of your Web server; for example, **myserver.webserver.com**.

The **Apache Installation Settings** dialog box appears.



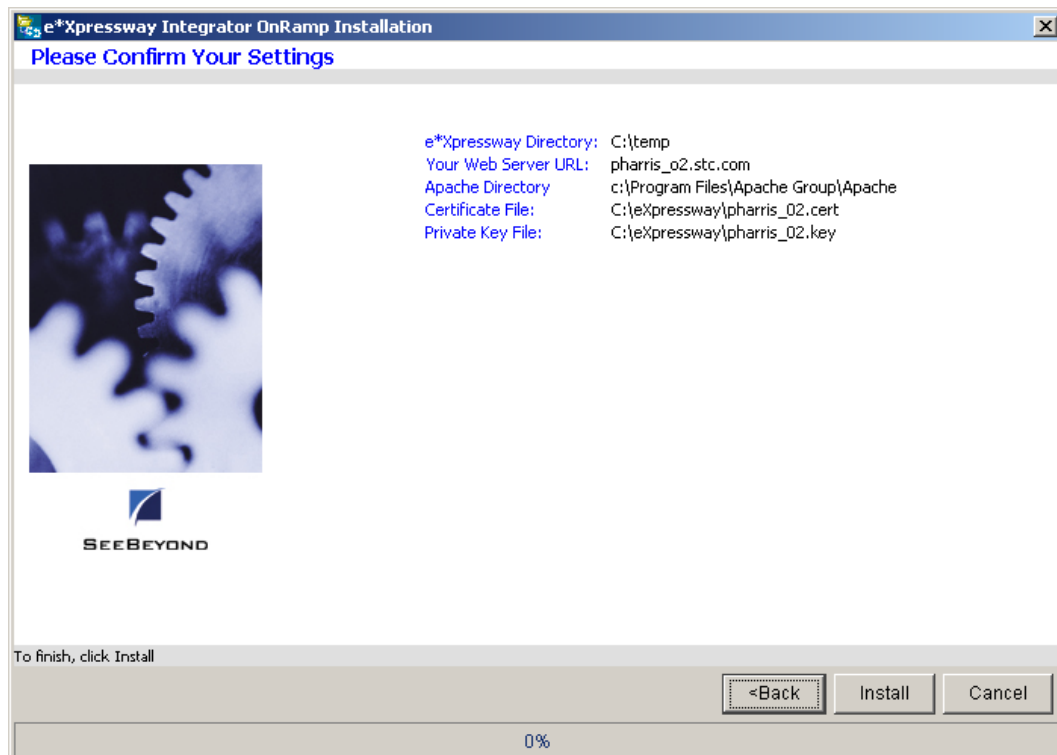
- 8 In the **Apache Destination Folder** box, the folder into which the files should be installed is already set by the installation utility.

**Note:** *The installation utility detects and suggests the appropriate target directory. Do not change this directory setting unless you are directed to do so by SeeBeyond support personnel. If you must install into a different directory, do not use special characters (such as “#” or “\*”) or spaces in the path.*

- 9 In the **Your Certificate File** box, type in, or browse to the location of your security certificate file. For more information about this file, see [“Setting up Internet security” on page 7](#).

- 10 In the **Your Private Key File** box, type in, or browse to the location of your private key file. For more information about this file, see [“Setting up Internet security” on page 7](#).
- 11 Click **Next**.

The **Setting Confirmation** dialog box appears.



- 12 Check the list of settings.
- 13 If you want to change any of the settings, click **Back** to go to the appropriate dialog box and make changes.
- 14 If the settings are correct, click **Install**.

Wait while installer program installs e\*Xpressway Integrator OnRamp.

When the installer program finishes installing the files, the **e\*Xpressway Configuration Manager** automatically starts. You will use this tool to configure e\*Xpressway Integrator OnRamp on your machine.

- 15 If you have specific B2B document format translation requirements, you must obtain a custom OnRamp Solution Package to properly integrate with the Trading Exchange. For example, if your transaction data format is XML-based, and the Trading Exchange's format is different, you will need a custom OnRamp Solution Package. Based on your data translation requirements, do one of the following:
  - To continue with the current process and configure the OnRamp to send transaction data to the Trading Exchange without reformatting, skip to [“Configuring e\\*Xpressway Integrator OnRamp” on page 15](#).

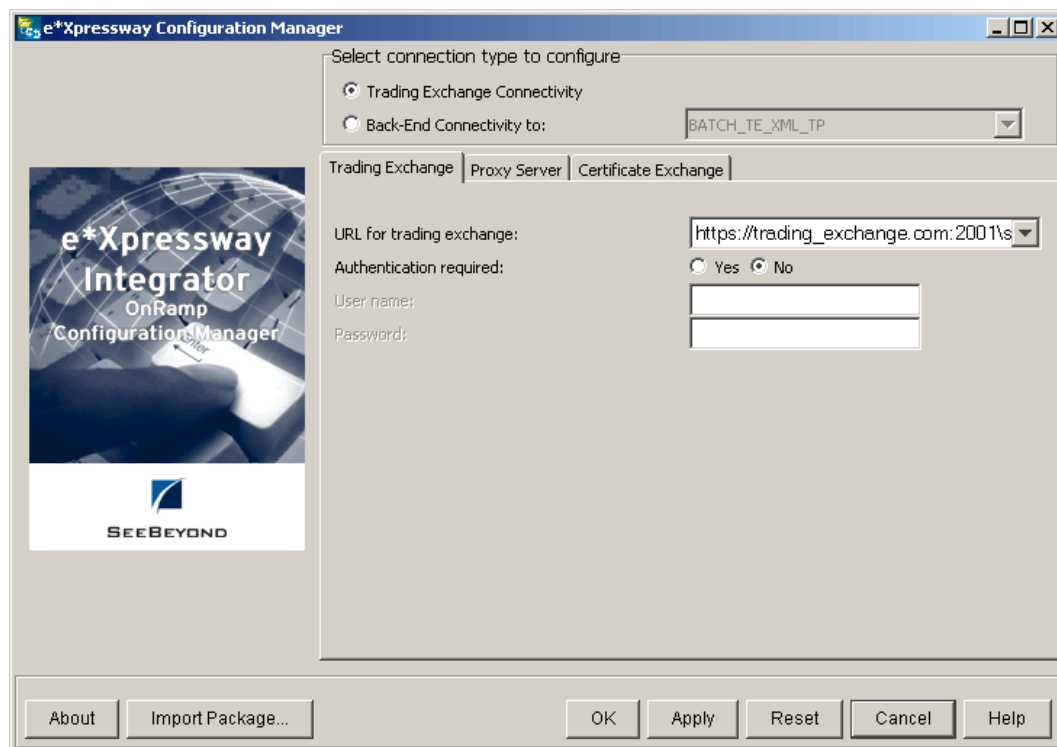
- To integrate a custom OnRamp Solution downloaded from the Trading Exchange's **OnRamp Customization Management** page, do the following:
  - A Click **Cancel** to stop the process.
  - B Shutdown and restart your computer.
  - C Go to **"Stage 2: Downloading your OnRamp Solution Package"** on page 21.

For more information on the e\*Xpressway Configuration Manager dialog box, click **Help**.

### 3.2.3 Configuring e\*Xpressway Integrator OnRamp

When the installer program finishes installing the files, the **e\*Xpressway Configuration Manager** automatically starts. Use this tool to configure the e\*Xpressway Integrator OnRamp that you downloaded from the Trading Exchange Web site.

To configure e\*Xpressway Integrator OnRamp

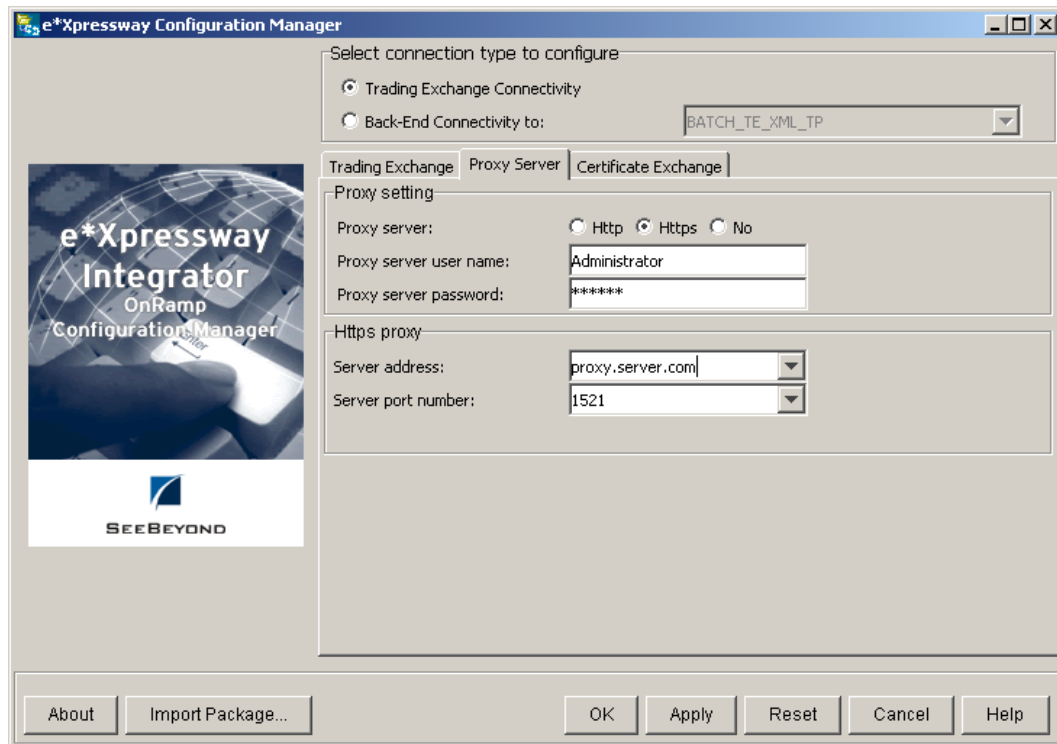


- 1 On the **Trading Exchange** tab, configure the connection you will use to connect with the Trading Exchange.
- 2 In the **URL for trading exchange** box, verify the Trading Exchange URL.  
The correct Trading Exchange URL should already be displayed in the **URL for trading exchange** box. If not, type the correct URL.
- 3 If user name and password authentication is not required to connect to the Trading Exchange, select **No**.

- 4 If user name and password authentication is required to connect to the Trading Exchange, select **Yes**, then do the following:
  - A Type the authorized user name.
  - B Type the authorized password.

5 Do one of the following:

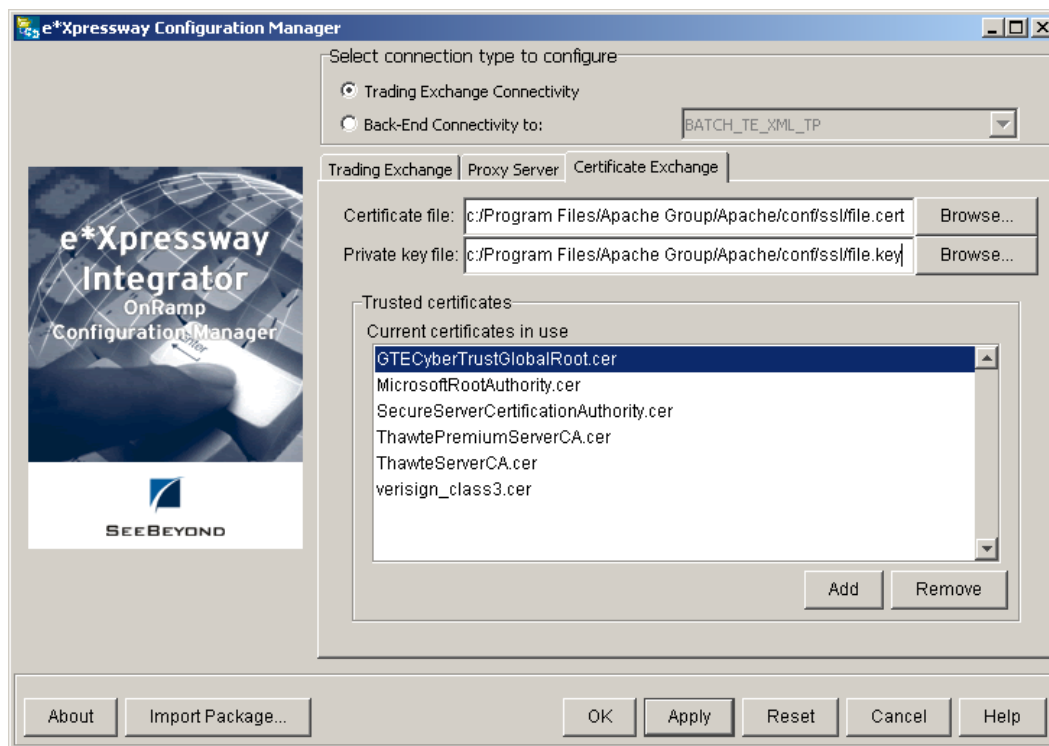
- If you are using a proxy server, click the **Proxy Server** tab.
- If you are not using a proxy server, select **No**, click **Apply**, and skip to Step 7.



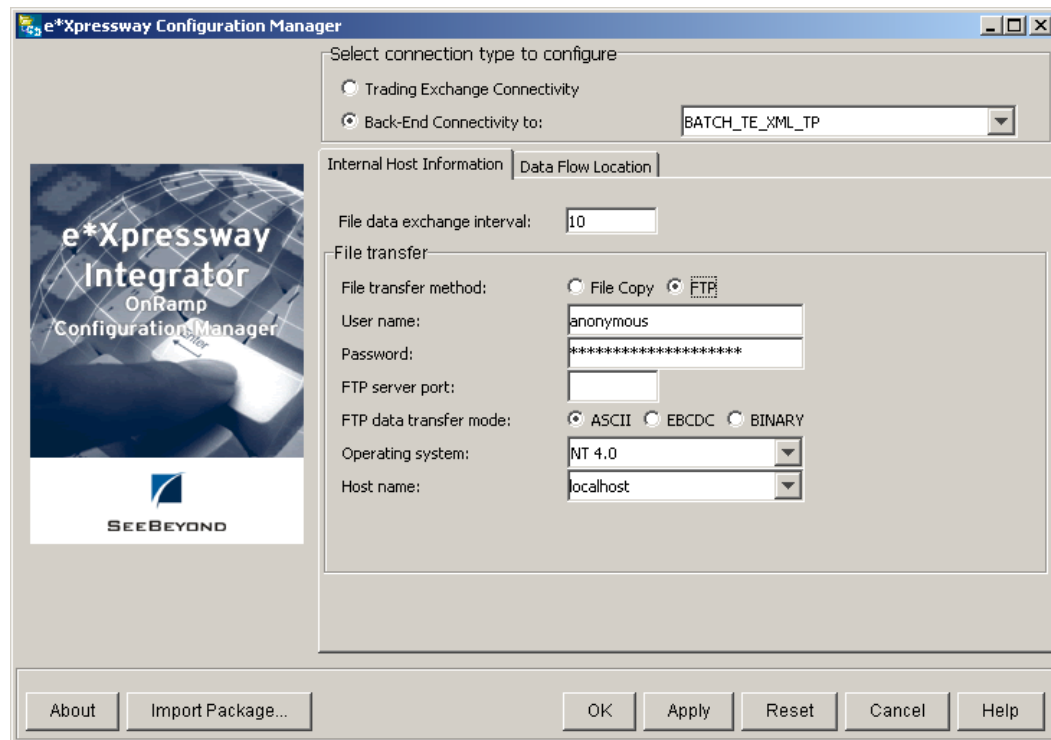
6 If you are using an HTTP or HTTPS proxy server, do the following:

- A Type the proxy server user name.
- B Type the proxy server password.
- C Type the proxy server address.
- D Type the proxy server port number.

7 Click the **Certificate Exchange** tab.



- 8 If necessary, click **Browse**, and add your certificate and private key files.  
Certificate and private key files may or may not be required by the Trading Exchange. For more information, see [“Setting up Internet security” on page 7](#).
- 9 To specify your back-end connectivity data format, select **Back-End Connectivity** to.



10 In the **Back-End Connectivity to** box, type or select your back-end data format.

11 Specify the file data exchange interval.

This value is the interval between file transmissions to the Trading Exchange, in seconds.

12 Specify a file transfer method: file copy or FTP.

13 If you selected FTP, do the following:

A Type the user name and password for the FTP server.

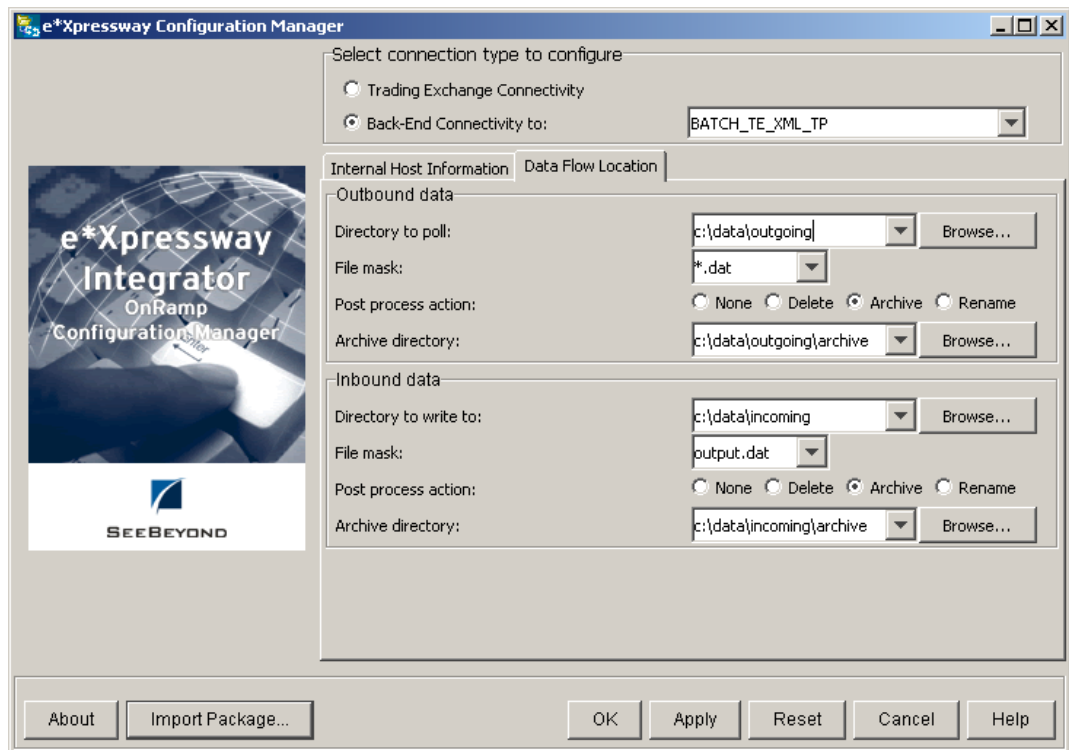
B Type the FTP port number.

C Select the FTP data transfer mode: ASCII, EBCDIC, or binary.

D If different than the front-end, in the **Operating System** box, type the back-end operating system you are using.

E If you typed in a back-end operating system, in the **Host Name** box, type the back-end server host name.

14 Select the **Data Flow Location** tab.



- 15 To specify where to place **outbound** data, do the following:
  - A In the **Directory to write to** box, type the directory where you will be placing outgoing files to be sent to the Trading Exchange.
  - B In the **File mask** box, type the file extension for your outgoing data files.
  - C In the **Post process action** box, specify how you want the outgoing files to be processed:
    - ♦ **None** = no processing.
    - ♦ **Delete** = delete the file after it is picked up.
    - ♦ **Archive** = save a copy of the file in the Archive directory.
    - ♦ **Rename** = rename the file when processed.
  - D In the **Archive directory** box, type the name of the directory where you want to store copies of outgoing files.
- 16 To specify where to place **inbound** data, do the following:
  - A In the **Directory to write to** box, type the directory where you will be placing incoming files.
  - B In the **File mask** box, type the file extension for the incoming files.
  - C In the **Post process action** box, specify how you want the incoming files to be processed:
    - ♦ **None** = no processing.



- ♦ **Delete** = delete the file after it is received.
  - ♦ **Archive** = save a copy of the file in the Archive directory.
  - ♦ **Rename** = rename the file when processed.
  - D In the **Archive directory** box, type the name of the directory where you want to store copies of incoming files.
- 17 When you are finished providing all the configuration information, click **Apply**.
- 18 Type your password.

**Note:** During the process of obtaining your Certificate, you assigned this **Private Key Password** to yourself. For more information, see “**Recommended Trusted Certificate Authority**” on page 8.

- 19 When you are finished providing all the configuration information, Click **OK**.  
Your e\*Xpressway Integrator OnRamp is now installed and configured.
- 20 If you are not downloading a customized OnRamp Solution Package, do the following:
- A Shut down and restart you computer.
  - B Go to “**Stage 3: Signing up and testing**” on page 30.

---

## 3.3 Stage 2: Downloading your OnRamp Solution Package



The OnRamp Solution Package enables communication between you and your Trading Exchange. The Package that you will download has been created specifically for you by the Trading Exchange. The OnRamp Solution is designed to enable communications between your Trading Partner URL and the Trading Exchange URL by translating transaction data from your message format to the message format of the Trading Exchange.

### 3.3.1 Selecting and downloading your custom OnRamp Solution Package

This section describes how to locate and download your custom OnRamp Solution Package to your local machine.

To select and download your OnRamp Solution Package

- 1 Return to the **Trading Exchange Member** page.
- 2 Click **Next** until the **Customize OnRamp** page appears.

[Main](#)
[Help](#) | [Log Out](#)

**e\*Xpressway Integrator™**

**Stage 1:**  
Download OnRamp

**Stage 2:**  
Customize OnRamp

**Stage 3:**  
Signup & Test

**Stage 4:**  
Troubleshooting

**Stage 5:**  
Go Live

On this page, you download the OnRamp Customization that has been created for you and your Trading Exchange.

When installed, the OnRamp Customization software will enable communication between your site and the Trading Exchange.

If you want to view notations that elaborate on or describe the OnRamp Customization you intend to download, click the **Notes** link inline with the package description and read the notations in the Notes window before downloading.

For more information on OnRamp Customizations, click [Help](#).

1. Click **Download** to download an OnRamp Customization.

Package Name	Ver	Description	Source	Destination	Formats	Size	PKI*	Actions
Sample Pack	1.0	Test Package	Source Format	Destination Format	1	88KB	yes	<a href="#">View Notes</a> <a href="#">Download</a>

\*PKI: If selected, this option provides for secure, encrypted transactions between your OnRamp client and the Trading Exchange.

After you have selected, downloaded and installed your OnRamp Customization, click, **Next** to continue on to **Stage 3: Signup & Test**.

[Next ►](#)

2. Save the downloaded **.zip** file in a directory on your computer.

3. Unzip the file into a directory on your hard drive. Do not unzip the file onto your desktop.

- 3 Read the instructions on the page carefully.
- 4 From the table of **OnRamp Solutions**, locate the solution that is correct for your transaction data format.
- 5 Under the **Actions** heading, click **View Notes** and read the information in the Notes popup window.
- 6 Click **Download**.
- 7 Specify a location to download the OnRamp Solution Package
- 8 Click **Save to Disk**.

The OnRamp Solution Package is downloaded from the **OnRamp Solution Center** to the specified location on your computer.

### 3.3.2 Installing your custom OnRamp Solution Package

The OnRamp Solution Package components must be extracted and added to your e\*Xpressway Integrator OnRamp system.

**Note:** *The configuration information for the custom OnRamp overwrites the information in any existing OnRamp configuration files.*

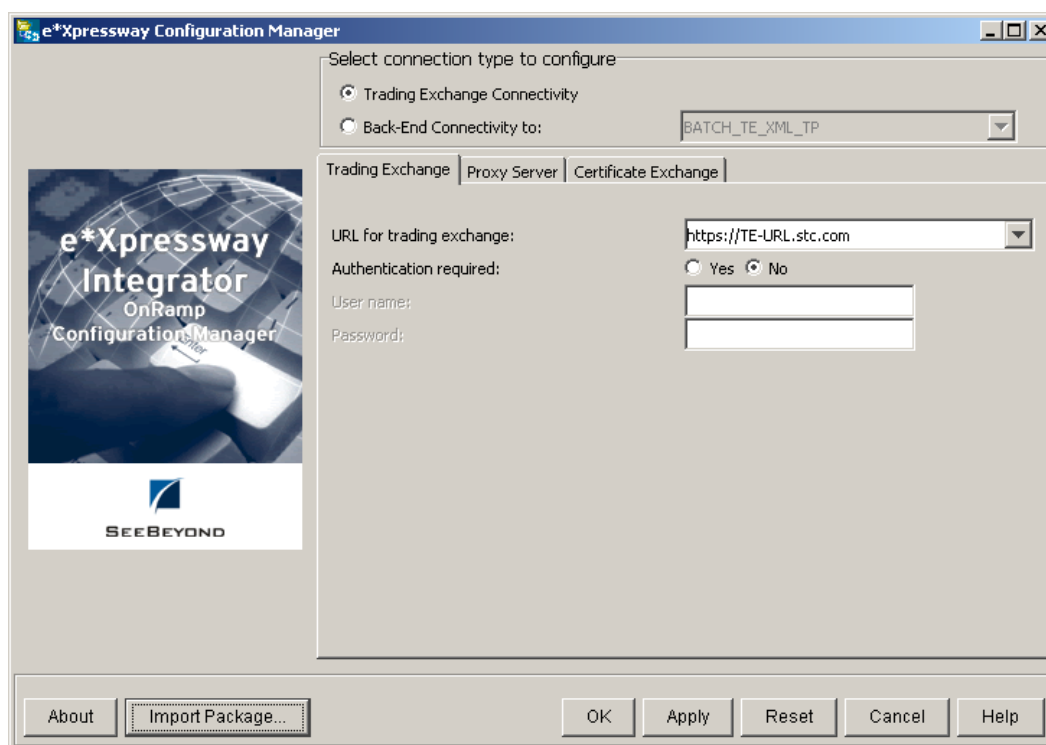
To install your custom OnRamp Solution Package

- 1 On your desktop, double-click the **e\*Xpressway Configuration Manager** icon:

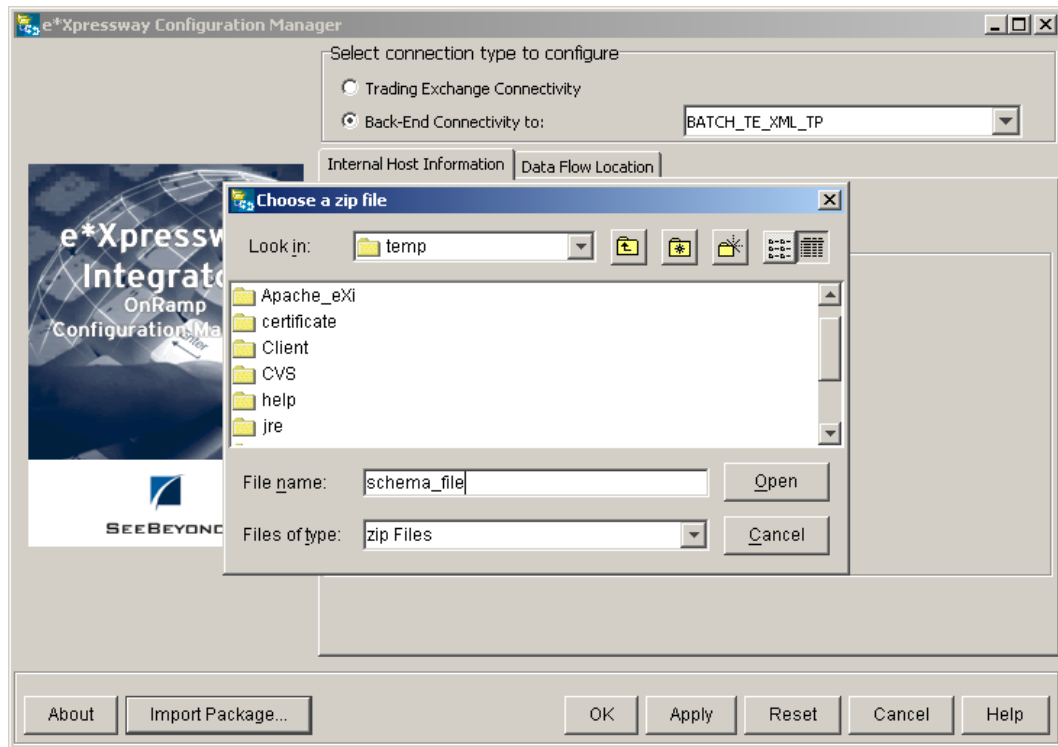


The **e\*Xpressway Configuration Manager** dialog box appears.

For more information on the **e\*Xpressway Configuration Manager** dialog box, click **Help**.

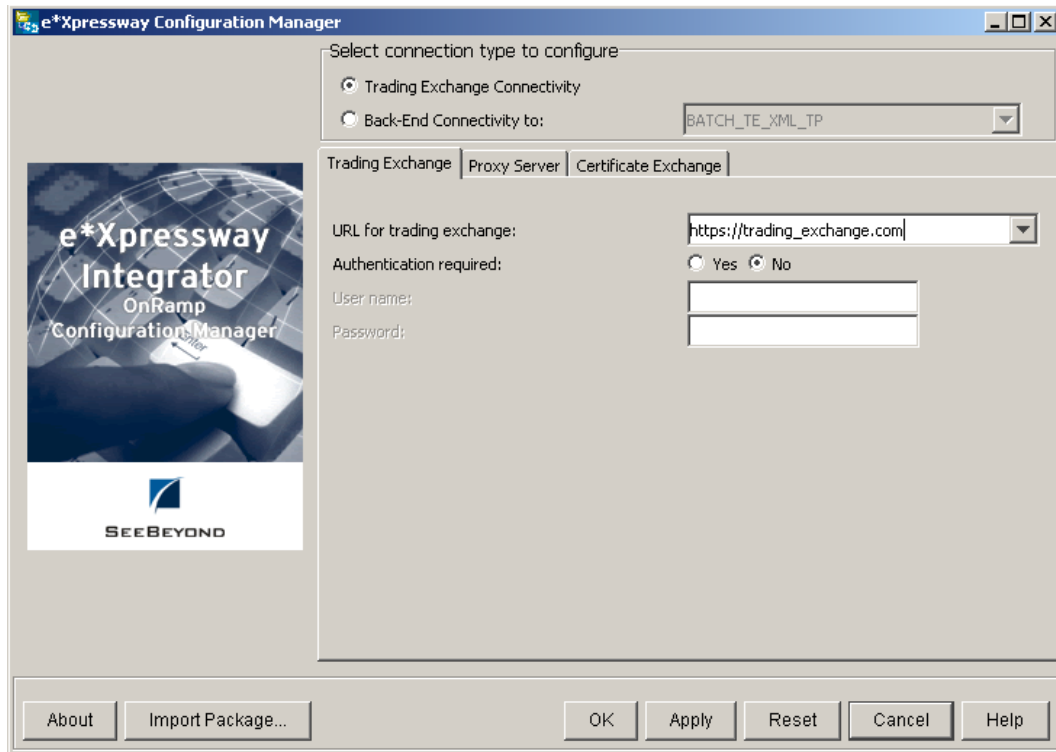


- 2 On the **Configuration Manager** dialog box, click **Import Package**.
- 3 To continue, click **Yes**.

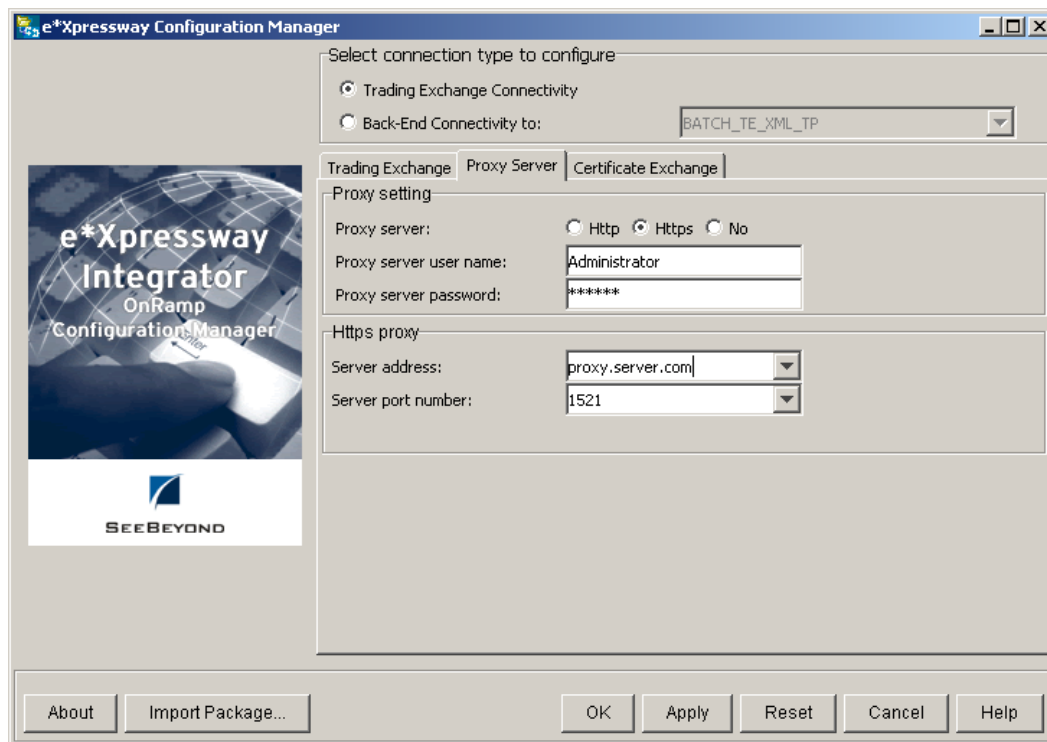


- 4 Navigate to the folder where you saved the custom OnRamp Solution Package .zip file, for example, **c:\temp**.
- 5 Double-click the OnRamp Solution Package .zip file.  
A warning message is displayed as follows:  
**If you continue with the import, your current OnRamp will be stopped.**  
**Your new OnRamp will be started when it is imported.**
- 6 To extract the files to the current directory, click **Yes**.

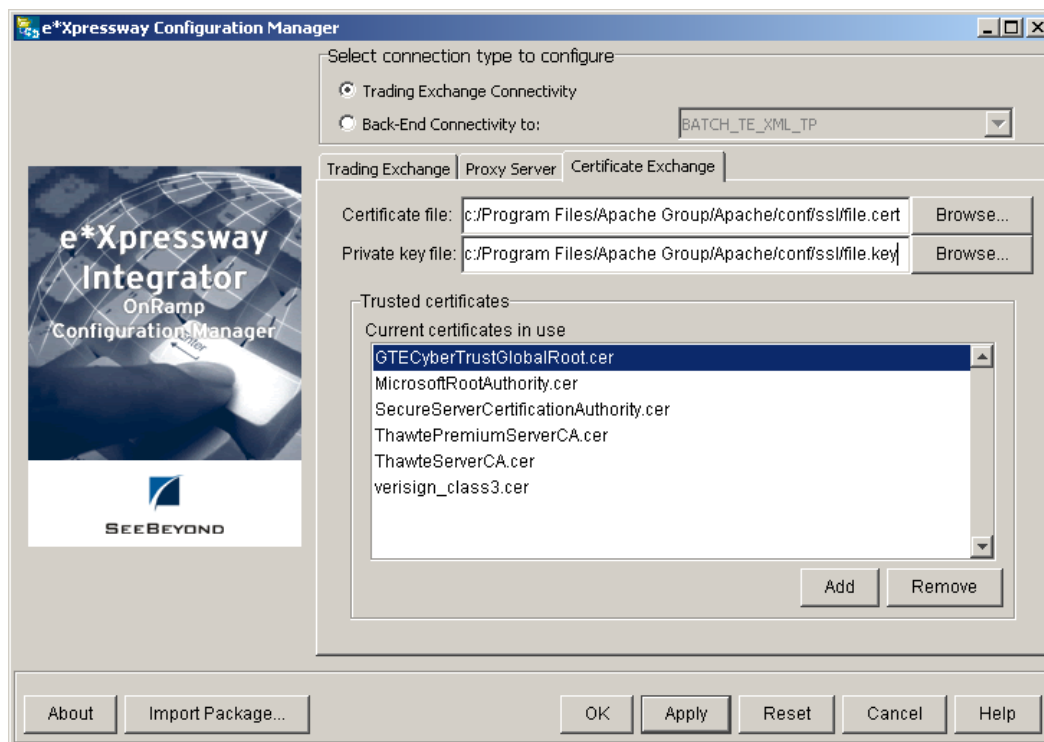
## To configure the custom OnRamp Solution



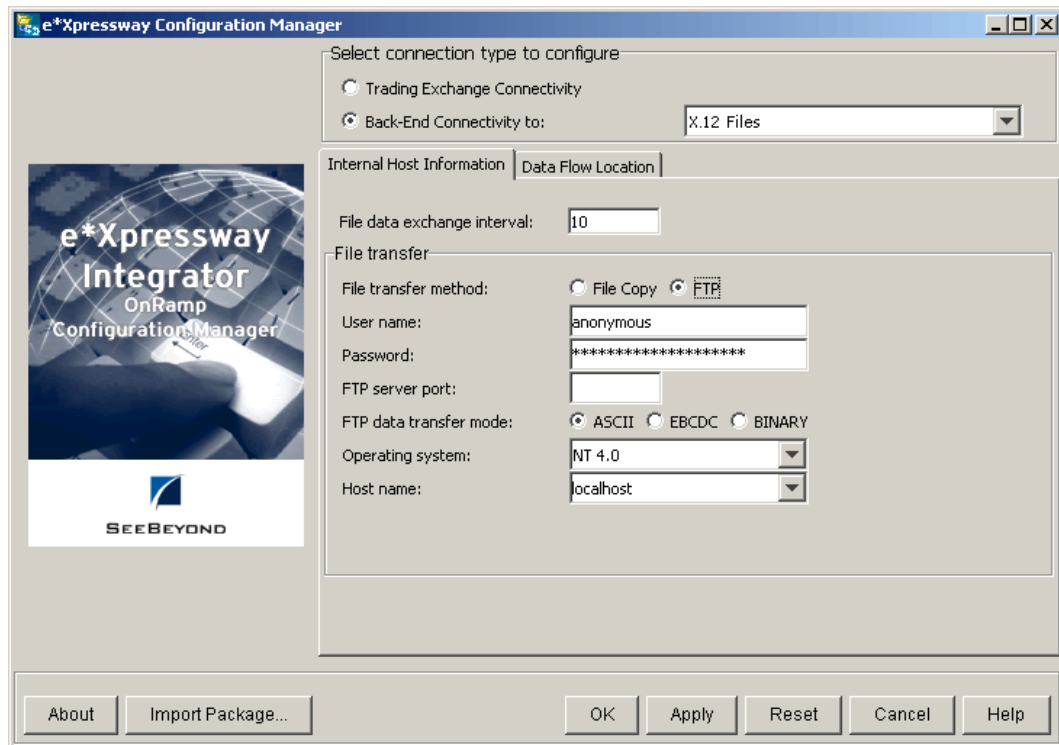
- 1 On the **Trading Exchange** tab, configure the connection you will use to connect with the Trading Exchange.
- 2 In the **URL for trading exchange** box, verify the Trading Exchange URL.  
The correct Trading Exchange URL should already be displayed in the **URL for trading exchange** box. If not, type the correct URL.
- 3 If user name and password authentication is not required to connect to the Trading Exchange, select **No**.
- 4 If user name and password authentication is required to connect to the Trading Exchange, select **Yes**, then do the following:
  - A Type the authorized user name.
  - B Type the authorized password.
- 5 Do one of the following:
  - If you are using a proxy server, click the **Proxy Server** tab.
  - If you are not using a proxy server, click **No**, click **Apply**, and skip to Step 7.



- 6 If you are using an HTTP or HTTPS proxy server, do the following:
  - A Type the proxy server user name.
  - B Type the proxy server password.
  - C Type the proxy server address
  - D Type the proxy server port number.
- 7 Click the **Certificate Exchange** tab.

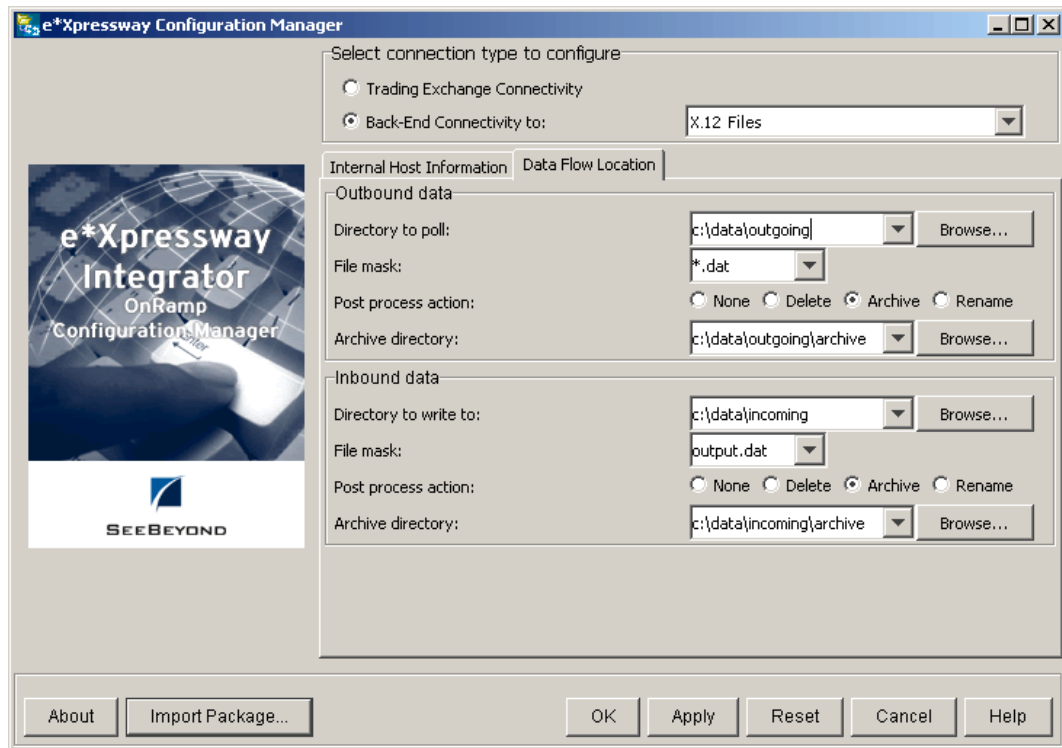


- 8 If necessary, click **Browse**, and add your certificate and private key files.  
Certificate and private key files may or may not be required by the Trading Exchange. For more information, see [“Setting up Internet security” on page 7](#).
- 9 To specify your back-end connectivity data format, select **Back-End Connectivity** to.



- 10 In the **Back-End Connectivity to** box, type or select your back-end data format. This is the data format for which you downloaded the OnRamp Solution Package.
- 11 Specify the file data exchange interval.  
This value is the interval between file transmissions to the Trading Exchange, in seconds.
- 12 Specify a file transfer method: file copy or FTP.
- 13 If you selected FTP, do the following:
  - A Type the user name and password for the FTP server.
  - B Type the FTP port number.
  - C Select the FTP data transfer mode: ASCII, EBCDIC, or binary.
  - D If different than the front-end, in the **Operating System** box, type the back-end operating system you are using.
  - E If you typed in a back-end operating system, in the **Host Name** box, type the back-end server host name.
- 14 Select the **Data Flow Location** tab.





- 15 To specify where to place **outbound** data, do the following:
- A In the **Directory to write to** box, type the directory where you will be placing outgoing files to be sent to the Trading Exchange.
  - B In the **File mask** box, type the file extension for your outgoing data files.
  - C In the **Post process action** box, specify how you want the outgoing files to be processed:
    - ♦ **None** = no processing.
    - ♦ **Delete** = delete the file after it is picked up.
    - ♦ **Archive** = save a copy of the file in the Archive directory.
    - ♦ **Rename** = rename the file when processed.
  - D In the **Archive directory** box, type the name of the directory where you want to store copies of outgoing files.
- 16 To specify where to place **inbound** data, do the following:
- A In the **Directory to write to** box, type the directory where you will be placing incoming files.
  - B In the **File mask** box, type the file extension for the incoming files
  - C In the **Post process action** box, specify how you want the incoming files to be processed:
    - ♦ **None** = no processing.

- ♦ **Delete** = delete the file after it is received.
  - ♦ **Archive** = save a copy of the file in the Archive directory.
  - ♦ **Rename** = rename the file when processed.
  - D In the **Archive directory** box, type the name of the directory where you want to store copies of incoming files.
- 17 When you are finished providing all the configuration information, click **Apply**.
- 18 Type your password.

**Note:** During the process of obtaining your Certificate, you assigned this **Private Key Password** to yourself. For more information, see “**Recommended Trusted Certificate Authority**” on page 8.

- 19 When you are finished providing all the configuration information, Click **OK**.  
Your e\*Xpressway Integrator OnRamp is now installed and configured.
- 20 Close the **Configuration Manager** dialog box.
- 21 Shut down and restart your computer.

---

## 3.4 Stage 3: Signing up and testing

“Signing up” means submitting your URL to the Trading Exchange. Before you can test your e\*Xpressway Integrator OnRamp software, you must first register your URL with the Trading Exchange Web site.

To add your company URL to the Trading Exchange

- 1 Using your browser, log into the Trading Exchange Web site
- 2 Click **Next** until the **Signup and Test** page appears.

**Trading Exchange** **SEEBEYOND**

[Main](#) [Help](#) | [Log Out](#)

**e\*Xpressway Integrator™**

[Stage 1: ☒](#) Download OnRamp | [Stage 2: ☒](#) Customize OnRamp | **Stage 3: Signup & Test** | Stage 4: Troubleshooting | Stage 5: Go Live

Before you can test your e\*Xpressway Integrator OnRamp software, you must first register your URL with the Trading Exchange.

To add your company to the Trading Exchange, enter the URL for your OnRamp client in the field below.

For more information on the signup process, click [Help](#).

Click **Submit** to register your URL with the Trading Exchange database.

My e\*Xpressway Integrator OnRamp URL is

https://  **Submit**

If you have signed up (as specified above) and received an acknowledgement via Email, please move on to Testing.

**Next** ►

[Main](#) | [Help](#) | [Log Out](#)

Please contact our [webmaster](#) with questions or comments.  
© 2001 SeeBeyond Technology Corporation. All Rights Reserved.

1 On the **Signup and Test** page, type the URL for your e\*Xpressway Integrator OnRamp in the field provided.

2 Click **Submit** to register your URL with the Trading Exchange database.

For more information on the sign-up process, click [Help](#).

You will be notified when your URL has been added to the Trading Exchange.

### 3.4.1 Testing communication

To test your installation of e\*Xpressway Integrator OnRamp, you will create and edit a sample file and send it to the Trading Exchange. The Trading Exchange will receive the file, parse it and send you a reply.

## Create and edit a sample file

**Note:** *The file names and locations may vary depending on the options selected during the e\*Xpressway installation.*

- 1 Using a text editor, such as Windows **notepad.exe**, create and edit a sample file, for example, **order.dat**.
- 2 Save **order.dat** in the **c:\data\outbound** directory.

**Note:** *Use the file extension provided by your Trading Exchange administrator; for example, **.dat**, **.txt**, **.xml**.*

- 3 Close your text editor.

You are now ready to test communication with the Trading Exchange.

## Transmit the Outbound File

Your OnRamp checks the **c:\data\outbound** directory for messages. When it finds a message, it transmits it to the Trading Exchange server. Watch for the test message to disappear when it is sent to the server. A copy of the message is placed in the **c:\data\outbound\archive** directory.

**Note:** *Make sure the test file you place in the **c:\data\outbound** directory has a file size greater than zero (> 0).*

To avoid conflicts, the name of the test file you place in the **c:\data\outbound** directory should be different than the files that are already in the **c:\data\outbound\archive** directory.

## Verify the Results

After the message is sent to the server, go to the **c:\data\inbound** directory. In a few moments, a new file will appear verifying that the server has received and processed your message.

---

## 3.5 Stage 4: Troubleshooting

This section describes where to look for solutions if you encounter problems sending or receiving messages.

By now, you have sent a test message and should have received a reply from the Trading Exchange server. If either of these steps fails, follow the troubleshooting recommendations below.

## If your test message was not picked up by the server

Check the following:

- Was the file named correctly?

Make sure your test message file name and format are consistent with your OnRamp requirements.

Is the OnRamp host machine connected to the Internet?

The OnRamp host cannot communicate with the Trading Exchange unless it is connected to the Internet.

- Was the correct URL specified during the sign-up process?

To verify the URL, check your sign-up confirmation e-mail.

- Was the OnRamp service started?

In some cases, it may be necessary to reboot your local machine after installing the e\*Xpressway Integrator OnRamp. Rebooting will force the service to restart.

If you did not receive a reply from the server, check the following:

- Was your Internet connection terminated?

To successfully communicate with the Trading Exchange, you must remain connected to the Internet at all times.

After correcting any problems, see **“Testing communication” on page 31** and follow the instructions to create and send test messages until you successfully communicate with the Trading Exchange.

---

## 3.6 Stage 5: Go Live

If you received a return message, you are ready to begin exchanging transaction data with the Trading Exchange.

# Operating e\*Xpressway Integrator OnRamp

This chapter describes how to start and stop e\*Xpressway Integrator OnRamp, followed by details on two utilities to be used as directed by your Trading Exchange to help maintain your OnRamp environment.

This Chapter Includes:

- “Starting and stopping your e\*Xpressway Integrator OnRamp” on page 34
- “Cleanup programs” on page 35

---

## 4.1 Starting and stopping your e\*Xpressway Integrator OnRamp

When you installed e\*Xpressway Integrator OnRamp, the installation program placed two icons on your desktop. One icon starts e\*Xpressway Integrator OnRamp, the other icon stops it.

### Starting eXpressway Integrator OnRamp

To start e\*Xpressway Integrator Onramp, on your desktop, double-click the **Start**

e\*Xpressway icon:



### Stopping eXpressway Integrator Onramp

To stop e\*Xpressway Integrator OnRamp, on your desktop, double-click the **Stop**

e\*Xpressway icon:



**Important:** *Your Web server must be running at all times to transmit information to the Trading Exchange.*

---

## 4.2 Cleanup programs

There are two utilities located in the `\client\bin` directory that were installed along with e\*Xpressway Integrator Onramp: **CleanUpQueues.cmd** and **CleanUpLogs.cmd**.

**Important:** *Do not run these programs unless specifically instructed to do so by your Trading Exchange.*

- The **CleanUpQueues.cmd** program purges all pending Internet protocol (IP) transactions and temporary files.
- The **CleanUpLogs.cmd** program purges all log files in the `\client\logs` directory.

These programs help maintain a clean environment if OnRamp debugging should ever be necessary.

To run these programs, simply go to `\client\bin` directory and double-click the program you want to run.

# Glossary

**Admin Site:** Web site used by a Trading Exchange Administrator to personalize and manage a Trading Exchange account.

**CA:** *Certificate Authority*. Issues and manages security credentials and public keys for message encryption.

See also, *Certificate*.

**Certificate:** Electronic document that establishes credentials when performing transactions over the Internet. Issued by a Certificate Authority.

**Config File:** Used by Trading Partners to configure e\*Ways. Included with each e\*Way in an OnRamp Solution Package. Read by the Configuration Tool.

**Config Tool:** See *e\*Xpressway Integrator OnRamp Configuration Manager*

**eXI Server:** See *e\*Xpressway Integrator Server*

**eXI OnRamp:** See *e\*Xpressway Integrator OnRamp*

**Export File:** Created by the Packager Tool to export an e\*Gate schema.

**e\*Xpressway Integrator OnRamp:** A small-footprint, downloadable component consisting of an e\*Gate schema, that provides the base platform, base schema objects, Apache Web Server and the e\*Xpressway Integrator OnRamp Configuration Manager. e\*Xpressway Integrator OnRamp enables the exchange of transaction data with the Trading Exchange using HTTPS communication, PKI encryption, and File- based back-end systems at the Trading Partner site.

**e\*Xpressway Integrator OnRamp Configuration Manager:** Used by Trading Partners to customize the configuration of an OnRamp Solution Package installed on e\*Xpressway Integrator OnRamp. Enables customization of HTTPS, Security, and the File/FTP-based connections by importing an OnRamp Solution Package downloaded from the eXI Server, and setting values through a Graphical User Interface. Also called the Config Tool.

**e\*Xpressway Integrator Server:** A server-based product that is hosted by a Trading Exchange that:

- Lets Solution Providers upload OnRamp Solution Packages.
- Lets Trading Partners download software and OnRamp Solution Packages.
- Provides customization and update tools for both the Trading Exchange administrator and the Trading Partner.

**Note:** eXI Server does not provide transactional capabilities and is not to be confused with a Trading Exchange.



**e\*Xpressway Integrator Server Administrator (eXI Admin):** Individual with Administrative-level privileges on the e\*Xpressway Integrator Server who can organize Trading Exchanges and set up, personalize, and administer the Trading Exchange environment.

**HTTPS:** *Secure Hypertext Transfer Protocol.* A Web protocol that encrypts and decrypts data sent via the Internet by a client (like a web browser), as well as data that are returned to the client by the Web server. HTTPS uses the Secure Socket Layer (SSL) as a sub-layer under standard HTTP.

**Member Site:** Web site accessed by a Trading Partner after approval by a Trading Exchange. The Member Site is accessible only after requesting and receiving approval via the Public Site and obtaining a logon from the Trading Exchange Administrator. The Member Site provides access to the e\*Xpressway Integrator OnRamp and OnRamp Solution Packages to enable integration of the Trading Partner with the Trading Exchange.

**OnRamp Solution:** Core component of e\*Xpressway Integrator OnRamp. A scaled-down version of e\*Gate 4.5 with a Registry Host, light Participating Host, limited e\*Ways, and a Control Broker.

**OnRamp Solution Center:** Area hosted on the e\*Xpressway Integrator Server for uploading and downloading OnRamp Solution Packages. Provides information on available OnRamp Solution Packages, including version, source, destination, and installation notes

**OnRamp Solution Package:** Integration software package developed from the OnRamp Solution e\*Gate schema by a Solution Provider. An OnRamp Solution Package provides data translation between different data formats used by a Trading Partner and a Trading Exchange. OnRamp Solution Packages are hosted on the e\*Xpressway Server, and are made available to Trading Partners via the e\*Xpressway Integrator OnRamp Packager Tool. A list of downloadable OnRamp Solution Packages is available in the OnRamp Solution Center.

See also, *OnRamp Solution*.

**Packager Tool:** A software packaging tool used by a Solution Provider to prepare custom OnRamp Solution Packages to be made available to Trading Partners via the e\*Xpressway Server Trading Exchange Admin Site.

**PKI:** *Public Key Infrastructure.* Enables users of an unsecured public network like the Internet to securely and privately exchange data through the use of a public and a private cryptographic key pair that is obtained and shared through a trusted authority. Public Key Infrastructure provides for a digital certificate that can identify an individual or an organization and directory services that can store and revoke the certificates.

**Private Key:** An encryption/decryption key known only to parties that exchange encrypted messages.

**Properties File:** Created by the Packager Tool to store information required by the OnRamp Solution Center and the Configuration Tool. Used by Trading Partners.

**Public Key:** A value provided by a designated authority as a key that, when combined with a private key derived from the public key, can be used to effectively encrypt messages and digital signatures.

See also, *PKI*.

**Public Site:** Web site accessed by a Trading Partner to request membership in a Trading Exchange.

See also, *Member Site*

**Software Package:** See *e\*Xpressway Integrator OnRamp*

**SP:** See *Solution Provider*

**Solution Provider:** Systems Integrator, SeeBeyond Consultant, Trading Exchange Customer, or other appropriate individual with e\*Gate skills who creates and packages OnRamp Solutions and uploads the Packages to the Trading Exchange's OnRamp Solution Center.

**SSL:** *Secure Socket Layer*. A common protocol for managing the security of message transmissions over the Internet. SSL uses the public and private key encryption system from RSA, which also includes the use of digital certificates.

**TE:** See *Trading Exchange*

**TP:** See *Trading Partner*

**Trading Exchange:** On the Internet, a business-to-business (B2B) organization that serves as an electronic broker for goods and services. A Trading Exchange communicates with a network of member Trading Partners.

In e\*Xpressway Integrator, a Trading Exchange implements e\*Xpressway Integrator Server to provide integration and transactional services to Trading Partners via the Internet.

**Trading Partner:** On the Internet, a business-to-business (B2B) organization that is a member of one or more Trading Exchanges. A Trading Partner communicates with a trading Exchange to buy or sell goods and services. Trading Partners send and receive business transaction data over the Internet via Trading Exchanges.

In e\*Xpressway Integrator, a Trading Partner deploys small-footprint software components downloaded from the e\*Xpressway Integrator Server to communicate with a Trading Exchange.

**Uploader Tool:** A Web-based tool used by a Solution Provider to upload OnRamp Solution Packages created with the Packager Tool.

# Index

## A

authentication 15, 25

## B

back-end connectivity 18, 27  
back-end data format, specifying 19, 28  
back-end operating system 19, 28  
back-end server 19, 28  
back-end server host name 19, 28

## C

certificate authority 7  
Certificate Exchange tab 17, 26  
certificate file 18, 27  
certificate files 2  
Certificate, acquiring 8  
cleanup programs 35  
CleanUpLogs.cmd 35  
CleanUpQueues.cmd 35  
communications, testing 5  
custom OnRamp Solution Package  
    configuring 25–30  
    downloading 21–22  
    installing 23–24  
custom OnRamp Solution, integrating 15  
Customize OnRamp page 21

## D

decryption key 7  
download site 1

## E

e\*Xpressway Configuration Manager 15, 23  
e\*Xpressway Configuration Manager icon 23  
e\*Xpressway Integrator OnRamp  
    configuring 9, 15–21, 34  
    downloading 10–11  
    installing 9–15  
    operating 34  
encryption key 7

eXpressway Integrator OnRamp  
    starting 34  
eXpressway Integrator Onramp  
    stopping 34

## F

file archive utility 2, 12  
FTP transfer mode 19, 28

## G

getting started 4–8  
going live 33

## I

inbound data files  
    processing 20, 29  
incoming files  
    storing 21, 30  
installation 9–30  
installation program files, extracting 12  
Installation Settings dialog box 12  
Internet security, setting up 4, 7  
introduction 1–3

## K

key 7

## L

Login page 10

## M

Member page 9

## N

Notes popup window 22

## O

OnRamp software, downloading 4  
OnRamp software, installing 12–15  
OnRamp Solution Package  
    downloading 4  
    installing 4  
operating e\*Xpressway Integrator OnRamp 34  
outbound data 20, 29  
outgoing data files 20, 29

outgoing files  
    processing 20, 29  
    storing 20, 29  
overview 1

## P

private key 2, 7  
private key file 18, 27  
Private Key, acquiring 8  
proxy server 17, 25, 26  
Proxy Server tab 17, 25  
public key 7

## R

Register link 6  
registering 4, 5–7  
registration 1  
Registration page 6  
requirements 2

## S

security  
    certificate 7  
    certificate authority 7  
    private key 7  
    setting up 7  
security certificate 7  
security credentials 7  
Setting Confirmation dialog box 14  
setup pages 2  
setup.cmd 12  
SSL encryption 8  
Start e\*Xpressway icon 34  
Stop e\*Xpressway icon 34

## T

TCP/IP 2  
Thank you page 6  
Trading Exchange  
    registering with 5–7  
Trading Exchange Main page 10  
Trading Exchange tab, 15, 25  
Trading Exchange Web site main page 5  
Trading Partner Readiness Checklist PDF file,  
    downloading 9  
troubleshooting 32–33  
Trusted Certificate Authorities 8  
trusted certificates, supported 8

## U

URL, adding 30–31

## V

VeriSign 8

## W

wizards 1