

***SeeBeyond™ eBusiness Integration Suite***

# HTML Converter User's Guide

*Release 4.5.2*



The information contained in this document is subject to change and is updated periodically to reflect changes to the applicable software. Although every effort has been made to ensure the accuracy of this document, SeeBeyond Technology Corporation (SeeBeyond) assumes no responsibility for any errors that may appear herein. The software described in this document is furnished under a License Agreement and may be used or copied only in accordance with the terms of such License Agreement. Printing, copying, or reproducing this document in any fashion is prohibited except in accordance with the License Agreement. The contents of this document are designated as being confidential and proprietary; are considered to be trade secrets of SeeBeyond; and may be used only in accordance with the License Agreement, as protected and enforceable by law. SeeBeyond assumes no responsibility for the use or reliability of its software on platforms that are not supported by SeeBeyond.

e\*Gate, e\*Insight, e\*Way, e\*Xchange, e\*Xpressway, eBI, iBridge, Intelligent Bridge, IQ, SeeBeyond, and the SeeBeyond logo are trademarks and service marks of SeeBeyond Technology Corporation. All other brands or product names are trademarks of their respective companies.

© 1999–2002 by SeeBeyond Technology Corporation. All Rights Reserved. This work is protected as an unpublished work under the copyright laws.

**This work is confidential and proprietary information of SeeBeyond and must be maintained in strict confidence.**

Version 20021106101702.

# Contents

---

## Chapter 1

<b>Introduction</b>	<b>4</b>
Overview	4
Supported Operating Systems	4
System Requirements	5

---

## Chapter 2

<b>Installation</b>	<b>6</b>
Windows NT and Windows 2000	6
Pre-installation	6
Installation Procedure	6
Files/Directories Created by the Installation	7

---

## Chapter 3

<b>Using the HTML Converter</b>	<b>8</b>
Creating Event Type Definitions from the GUI	8
Creating Event Type Definitions from a Command Line	9

# Introduction

This chapter introduces you to SeeBeyond™ Technology Corporation's (SeeBeyond™) HTML Converter and describes its features.

---

## 1.1 Overview

The HTML Converter Build tool creates an Event Type Definition (ETD) file based upon a form in an HTML page. The HTML page can be stored on disk or be accessed via HTTP.

**Important:** *If the form contains a link that is redirected to another Web page, you must save the source HTML code to a file on disk first, then use the local HTML file as the source for the HTML converter.*

You can access the HTML Converter from either the Enterprise Manager GUI (via the ETD Editor) or directly from a command line. The HTML Converter opens the HTML page, parses it for a FORM tag and uses the structure within the FORM statements to build the Event Type Definition. Any HTML tags that require quoted values (for example, `<select name = "option1">`) must include all required quotation marks.

The following types are supported:

- Both the POST and GET methods
- All input types

Button-related tags (such as "Submit" or "Reset") and hidden elements are ignored.

---

## 1.2 Supported Operating Systems

The HTML Converter is available on the following operating systems:

- Windows 2000, Windows 2000 SP1, Windows 2000 SP2, and Windows 2000 SP3
- Windows NT 4.0 SP6a
- Japanese Windows 2000, Windows 2000 SP1, and Windows 2000 SP2
- Japanese Windows NT 4.0 SP6a

---

## 1.3 System Requirements

To use the HTML Converter, you need:

- An e\*Gate Participating Host, version 4.5.1 or later
- A TCP/IP network connection
- Pentium-class 866 MHz CPU

### External System Requirements

There are no external system requirements.

# Installation

This chapter describes how to install the HTML Converter.

---

## 2.1 Windows NT and Windows 2000

### 2.1.1 Pre-installation

- 1 Exit all Windows programs before running the setup program, including any anti-virus applications.
- 2 You must have Administrator privileges to install this product.

### 2.1.2 Installation Procedure

To install the HTML Converter on Windows systems

- 1 Log in on the workstation on which you want to install the HTML Converter.
- 2 Insert the installation CD-ROM into the CD-ROM drive.
- 3 If the CD-ROM drive's "Autorun" feature is enabled, the setup application should launch automatically. Otherwise, use Windows Explorer or the Control Panel's **Add/Remove Applications** feature to launch the file **setup.exe** on the CD-ROM drive.
- 4 The InstallShield setup application will launch. Follow the on-screen instructions until you come to the Select Components screen.
- 5 Check the box labelled **Add-ons**. Then, follow the on-screen instructions to install the product.

**Note:** *Be sure to install all of the files in the suggested "client" installation directory. The installation utility detects and suggests the appropriate installation directory. Unless you are directed to do so by SeeBeyond support personnel, do not change the suggested "installation directory" setting.*

---

## 2.2 Files/Directories Created by the Installation

The HTML Converter installation process will install the following files within the e\*Gate directory tree. Files will be installed within the “egate\client” tree on the Participating Host and committed to the “default” schema on the Registry Host.

**Table 1** Files created by the installation

e*Gate Directory	File(s)
\bin	stc_form2ssc.exe

# Using the HTML Converter

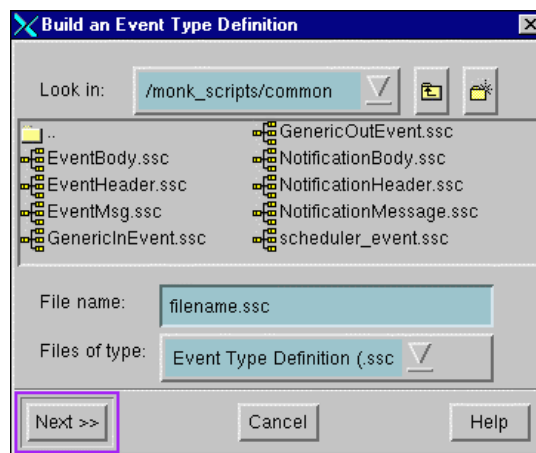
This chapter describes how to use the HTML Converter to convert an HTML form to an Event Type Definition (ETD) file.

## 3.1 Creating Event Type Definitions from the GUI

To create an ETD using the HTML Converter from the GUI:

- 1 Launch the ETD Editor.
- 2 On the ETD Editor's Toolbar, click **Build**. The **Build an Event Type Definition** dialog box appears.

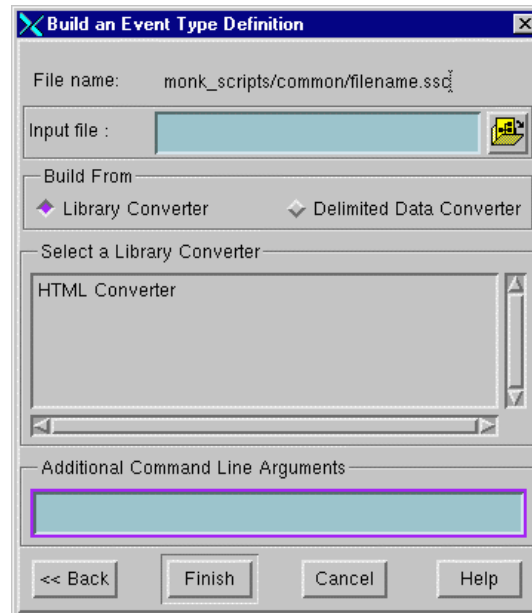
**Figure 1** Build an Event Type Definition



- 3 In the **File name** field, type the name of the ETD file you wish to build. Do not specify any file extension—the Editor will supply the .ssc extension automatically.
- 4 Click **Next**. A new dialog box displays.



**Figure 2** Build an Event Type Definition - HTML Converter



- 5 Leave the **Input file** field blank—the HTML Converter does not use this field.
- 6 Under **Build From**, select **Library Converter**.
- 7 Under **Select a Library Converter**, select **HTML Converter**.
- 8 Under **Additional Command Line Arguments**, type the following:

```
-html input_file
```

where

*input\_file* is the HTML filename (including the path) or the URL to the HTML page

- 9 Click **Finish**. The Build tool will create the ETD.

If your input HTML page contains more than one form, the Build tool will create multiple ETD files, one for each form. The name of each file will be the file name you entered in step 3 with an underscore and number appended to it, starting with zero. For example: **html\_0.ssc**, **html\_1.ssc**, and so on.

If your HTML page contained only a single form the ETD Editor will open the resulting ETD file automatically at the conclusion of the conversion process. If multiple ETD files were created, you must open each file manually.

---

## 3.2 Creating Event Type Definitions from a Command Line

To create an ETD using the HTML Converter from a command line:

From the command line type the following on one line:

```
stc_form2ssc -rh registry_host -rs schema_name -un username  
-up password -html input_file -tf logfile output_file
```

where

- *registry\_host* is the name of the computer on which the e\*Gate Registry Host resides.
- *schema\_name* is the name of the e\*Gate schema you are creating. For requirements regarding schema names, see the Enterprise Manager's online Help system.
- *username* and *password* are the e\*Gate administrator username and password, respectively.
- *input\_file* is the HTML filename (including the path) or the URL to the HTML page.
- *logfile* is the name of a log file to capture warning and error messages. This argument is optional.
- *output\_file* is the filename—including the path relative to the "eGate/client" directory—of the Event Type Definition file to be created. Do not specify any file extension—the converter will supply the .ssc extension automatically.

**Note:** The *output\_file* argument must be the last argument listed.