

***SeeBeyond™ eBusiness Integration Suite***

# SWIFT ETD Library User's Guide

*Release 4.5.2*

*Java Version*



The information contained in this document is subject to change and is updated periodically to reflect changes to the applicable software. Although every effort has been made to ensure the accuracy of this document, SeeBeyond Technology Corporation (SeeBeyond) assumes no responsibility for any errors that may appear herein. The software described in this document is furnished under a License Agreement and may be used or copied only in accordance with the terms of such License Agreement. Printing, copying, or reproducing this document in any fashion is prohibited except in accordance with the License Agreement. The contents of this document are designated as being confidential and proprietary; are considered to be trade secrets of SeeBeyond; and may be used only in accordance with the License Agreement, as protected and enforceable by law. SeeBeyond assumes no responsibility for the use or reliability of its software on platforms that are not supported by SeeBeyond.

e\*Gate, e\*Insight, e\*Way, e\*Xchange, e\*Xpressway, iBridge, Intelligent Bridge, IQ, SeeBeyond, and the SeeBeyond logo are trademarks and service marks of SeeBeyond Technology Corporation. All other brands or product names are trademarks of their respective companies.

© 1999-2002 by SeeBeyond Technology Corporation. All Rights Reserved. This work is protected as an unpublished work under the copyright laws.

**This work is confidential and proprietary information of SeeBeyond and must be maintained in strict confidence.**

Version 20020214052946.

# Contents

---

<b>Preface</b>	<b>5</b>
Intended Reader	5
Online Viewing	5
<hr/>	
<b>Chapter 1</b>	
<b>Introduction</b>	<b>6</b>
Overview	6
SWIFT Message Structure	6
Library Versions	7
Template Versions	7
Monk and Java	7
Full and Slim	7
Java Representation	8
<b>Logical Replies</b>	<b>10</b>
e*Gate Acknowledgment to SWIFT	10
SWIFT Acknowledgment to e*Gate	10
Successful messages	10
Unsuccessful messages	11
<hr/>	
<b>Chapter 2</b>	
<b>Installation</b>	<b>12</b>
System Requirements	12
Supported Operating Systems	12
Windows Systems	14
UNIX Systems	17
Files and Directories	18

---

Chapter 3

**The SWIFT ETD Library 19**

**SWIFT Message Types 19**

MT 1xx Messages	20
MT 2xx Messages	21
MT 3xx Messages	22
MT 4xx Messages	23
MT 5xx Messages	24
MT 6xx Messages	27
MT 7xx Messages	28
MT 8xx Messages	29
MT 9xx Messages	30
MT n9x Messages	31

---

**Index 32**

# Preface

This User's Guide describes the SWIFT ETD Library, including procedures for installing the Library on your Windows NT/2000 or UNIX-based system.

---

## P.1 Intended Reader

The reader of this guide is presumed to be a developer or system administrator with responsibility for maintaining the SeeBeyond™ e\*Gate™ Integrator system, and have a working knowledge of:

- Windows NT/2000 and/or UNIX operations and administration
- Windows-style GUI operations
- Either the e\*Way Intelligent Adapter for SWIFT ADK or the SWIFT 2000 Gold Certified e\*Way (whichever is applicable)

---

## P.2 Online Viewing

This User's Guide is provided in Adobe Acrobat's Portable Document Format (PDF). As such, it can be printed out on any printer or viewed online. When viewing online, you can take advantage of the extensive hyperlinking imbedded in the document to navigate quickly throughout the Guide.

Hyperlinking is available in:

- The Table of Contents
- The Index
- Within the chapter text, indicated by **blue print**

Existence of a hyperlink *hotspot* is indicated when the hand cursor points to the text. Note that the hotspots in the Index are the *page numbers*, not the topics themselves. Returning to the spot you hyperlinked from is accomplished by right-clicking the mouse and selecting **Go Back** on the resulting menu.

# Introduction

## 1.1 Overview

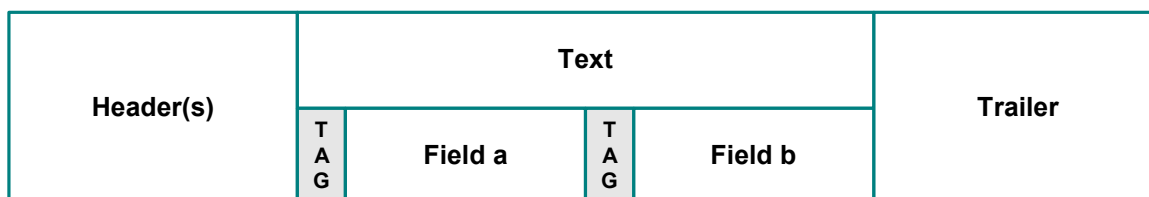
The SWIFT ETD Library contains pre-defined template Event Type Definitions (ETDs) for use with an e\*Way Intelligent Adapter for SWIFT. These ETDs correspond to the SWIFT user-to-user message types used for the SWIFT network, as defined in the SWIFT Standards documentation.

## 1.2 SWIFT Message Structure

A message used by the SWIFT network has a maximum of five components:

- Basic header block
- Application header block
- User header block (optional)
- Text block
- Trailer block

**Figure 1** SWIFT Message Structure



Each field component in the text block is preceded by a field tag; there are no field tags in the header and trailer blocks. The one exception to this format is MT 121, EDIFACT FINPAY, which has a single text field with no field tag identifier.

Information about a field that is common to all message types in which that field is used is found in the *Standards - General Field Definitions* volume of the *SWIFT User Handbook*. Information about a field that is specific to its use with a particular message

type is found in the field specifications section of the *Standards* volume of the *SWIFT User Handbook* for that message type.

---

## 1.3 Library Versions

SWIFT periodically revises their Message Types, adding to or subtracting from the total set of Message Types, and modifying the definitions of individual Message Types. New sets are identified with the year they are issued, such as 1998, 2000, and 2001.

SeeBeyond releases new ETD libraries corresponding to these revised sets of SWIFT Message Types. The current release includes templates supporting only the 2001 Message Type set. The library for the year 2001 is named `java_swift01`.

---

## 1.4 Template Versions

### 1.4.1 Monk and Java

Beginning with e\*Gate 4.5, Collaborations can be created in either Monk or Java. On Windows platforms, installing the SWIFT ETD Library for 2001 installs both Monk and Java versions of the Library. The two versions are installed into different directory paths, and are accessed by the Monk or Java ETD Editors, respectively.

### 1.4.2 Full and Slim

Two versions of the templates are available for each library representation (Monk or Java): **full** and **slim**. The functional difference between the two is that the syntax checking performed by the **slim** versions is limited to field level, whereas the **full** versions check to the sub-field level. Using the **slim** versions assumes that the messages have been validated previously. If this is not the case, you should use the **full** versions to fully validate the messages.

## Java Representation

Figure 2 and Figure 3 illustrate the structural difference between **slim** and **full** templates for SWIFT Message Type MT 111, as they respectively appear in the Java ETD Editor. Note that the branches in the **slim** versions typically end with **Tag/Data** node pairs, whereas the **full** versions have branches ending in nodes representing the actual data fields. Although the files in this example are similar in size, the **full** version of a template *can* be several times the size of the **slim** version.

**Figure 2** SLIM Example - Java

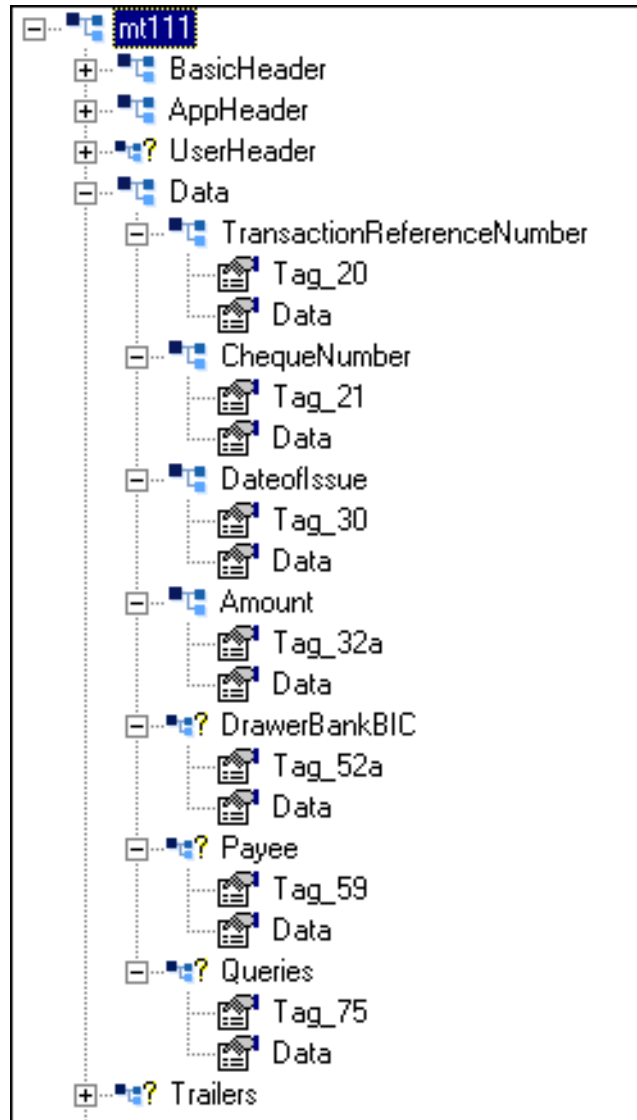
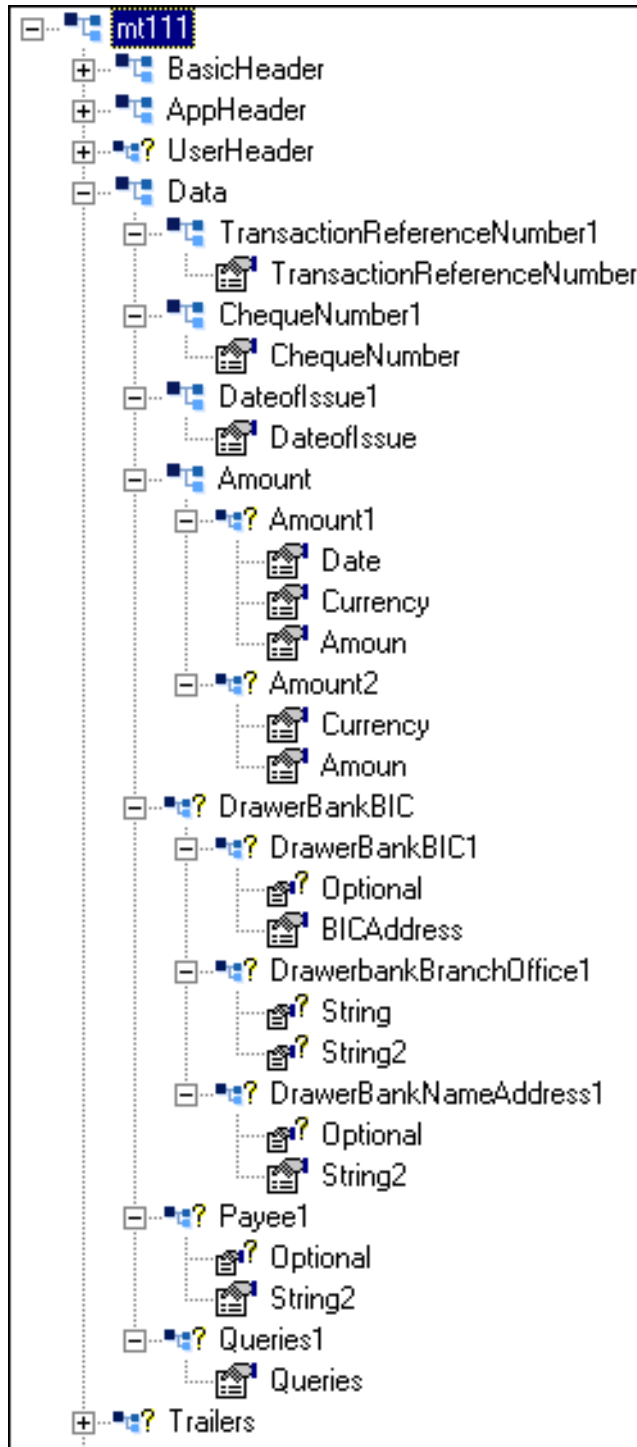




Figure 3 FULL Example - Java



## 1.5 Logical Replies

**Note:** *This section applies only to systems using the SWIFT Gold 2000 Certified e\*Way.*

Every Event sent between SWIFTAlliance via CAS and the SWIFT Gold 2000 Certified e\*Way is acknowledged by a logical reply. This confirms that the Event has been accepted. In addition, the SWIFT Transport Network sends a Delivery Report when the Event is delivered to the remote financial system. Other reports also can be produced.

The template files provided in the ETD Library are the logical reply (SWIFT\_LRP.\*) and network acknowledgement (fin\_ack.\*) from the SWIFT network. These are returned by the SWIFT Gold 2000 Certified e\*Way.

### 1.5.1 e\*Gate Acknowledgment to SWIFT

If, and only if, e\*Gate sends an acknowledgment to the e\*Way (meaning it has stored the message successfully to some persistent store), the e\*Way sends a logical reply to CAS, signalling a successful transmission. At this stage, the Event is deleted from the IQ.

If e\*Gate cannot identify, translate or route an Event, it sends a negative acknowledgment to the e\*Way, which stores the Event to a unique file in a configurable directory. The e\*Way then sends a logical reply to CAS signifying that e\*Gate has received the Event and has moved onto the next. This Event is then logged.

Application-level acknowledgments from the systems receiving SWIFT messages (or translated SWIFT messages) are returned via the outbound Event flow.

### 1.5.2 SWIFT Acknowledgment to e\*Gate

After e\*Gate has translated the Event into CAS message format it sends it to the outbound queue for the e\*Way.

**Note:** *Only successfully translated Events are sent to the outbound e\*Way.*

#### Successful messages

After the e\*Way receives the Event, it stores it in an IQ. The Event is sent to CAS, which in turn, delivers it to the SWIFTAlliance.

SWIFTAlliance writes the Event to its outbound queue to the SWIFT Transport Network. It then sends the e\*Way a logical reply signifying that the Event is stored in permanent memory. Only when the e\*Way receives this successful logical reply does it signal the e\*Gate system of a successful transmission by sending a *logical reply message*. In the server, this *logical reply message* can be either:

- Passed back to the originating system either in its default format or in a user-defined format
- Sent to a file or database

- Sent to the Alert Notifier

**Note:** *The acknowledgment from the SWIFT Transport Network (that the message has been delivered to the recipient) is not returned from this flow. It is delivered as an inbound report to the e\*Gate system from the SWIFT Transport Network. This message is routed back to the originating system.*

## Unsuccessful messages

If CAS or SWIFTAlliance is down, the message remains in the e\*Gate system until both are operational again.

If SWIFTAlliance finds any semantic or syntactical errors (block 4 errors) in an Event, the Event is placed in the Correction queue for manual intervention. Once the Event has been corrected, it is sent in the normal way. A successful logical reply (LRP\_SUCCESS) is sent to CAS (and hence to the e\*Way) when the Event is placed in the Correction queue, even though the Event is not transmitted straight away. When the Event is sent to the SWIFT network, a report is sent to CAS and the e\*Way.

Events with errors in blocks 1 or 2 cannot be handled by SWIFTAlliance and a negative logical reply (LRP\_FAILURE) is sent back to CAS and the e\*Way. The e\*Way sends an error message and the original Event back to the e\*Gate system. The e\*Gate Monitor also registers and records this error and the e\*Way also archives the Event to a unique file in a user-configurable directory.

Any errors in transmission are handled automatically and the Event re-sent until all Events are successfully delivered or result in an error condition.

The Event can be either:

- Passed back to the originating system, either in its default format or in a user-defined format
- Sent to a file or database
- Sent to the Alert Notifier—if desired, a user can be notified in real-time via e-mail or Web page of this event

# Installation

This chapter covers requirements and procedures for installing the SWIFT ETD Library on Windows NT/2000 and UNIX systems.

---

## 2.1 System Requirements

To use the SWIFT ETD Library, you must have the following:

- 1 A SeeBeyond e\*Way Intelligent Adapter capable of connecting to SWIFTAlliance, such as:
  - ◆ e\*Way Intelligent Adapter for SWIFT ADK
  - ◆ Batch e\*Way Intelligent Adapter
  - ◆ SWIFT Gold 2000 Certified e\*Way Intelligent Adapter

Requirements associated with these e\*Ways are described in their respective User's Guides.

- 2 Approximately 24 MB of disk space to support `swift01` files.

### 2.1.1 Supported Operating Systems

The SWIFT ETD Library is available on the following operating systems:

- Windows 2000, Windows 2000 SP 1, and Windows 2000 SP 2
- Windows NT 4.0 SP 6a
- Solaris 2.6, Solaris 7, and Solaris 8
- HP-UX 11.0
- AIX 4.3.3
- Red Hat Linux 6.2
- Compaq Tru64, V 4.0F and V 5.0A

## Japanese

- Windows 2000, Windows 2000 SP 1, and Windows 2000 SP 2
- Windows NT 4.0 SP 6a
- Solaris 2.6, Solaris 7, and Solaris 8
- HP-UX 11.0

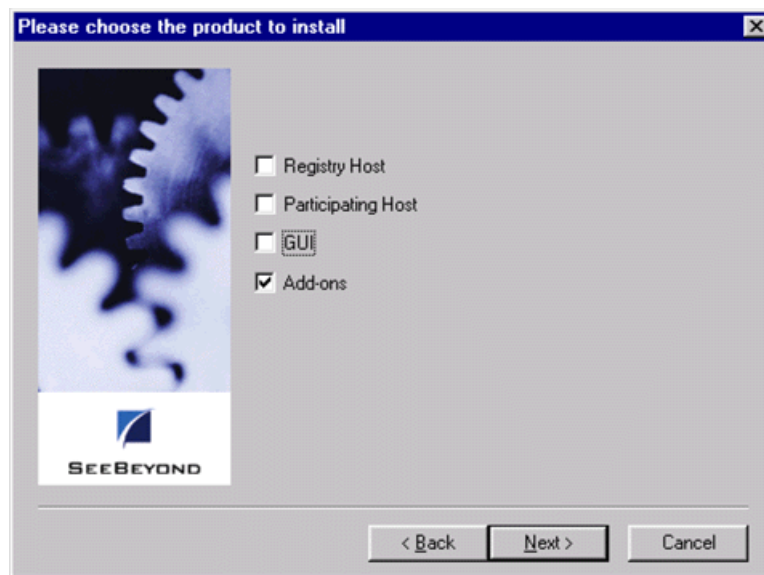
## 2.2 Windows Systems

**Note:** Be sure to install all of the template files in the suggested installation directory. The installation utility detects and suggests the appropriate installation directory. Unless you are directed to do so by SeeBeyond support personnel, do not change the suggested installation directory setting.

### To Install the SWIFT ETD Library on Windows

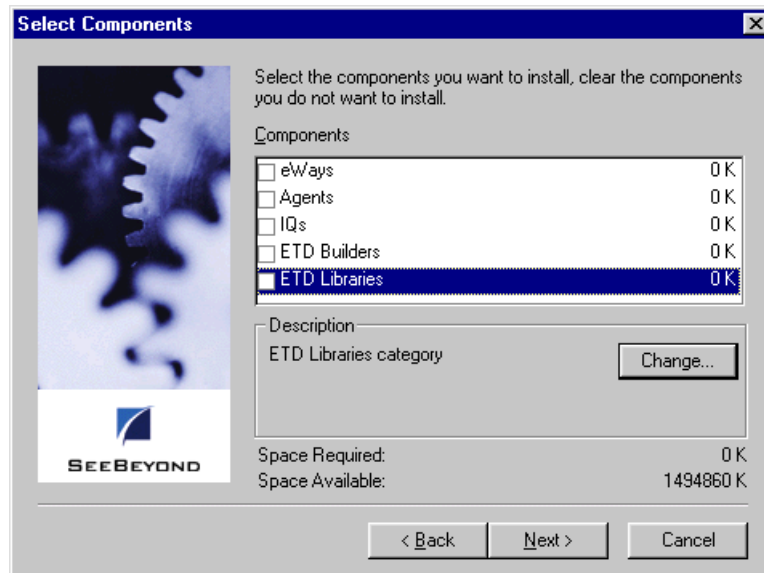
- 1 Log onto the workstation on which the SWIFT e\*Way resides.
- 2 Insert the installation CD-ROM into the CD-ROM drive.
- 3 If the CD-ROM drive's Autorun feature is enabled, the setup application should launch automatically. Otherwise, use the Windows Explorer or the Control Panel's **Add/Remove Applications** feature to launch the file **setup.exe** on the CD-ROM drive.
- 4 The InstallShield setup application launches. Follow the on-screen instructions until you come to the **Choose Product** screen.

**Figure 4** Choose Product Dialog



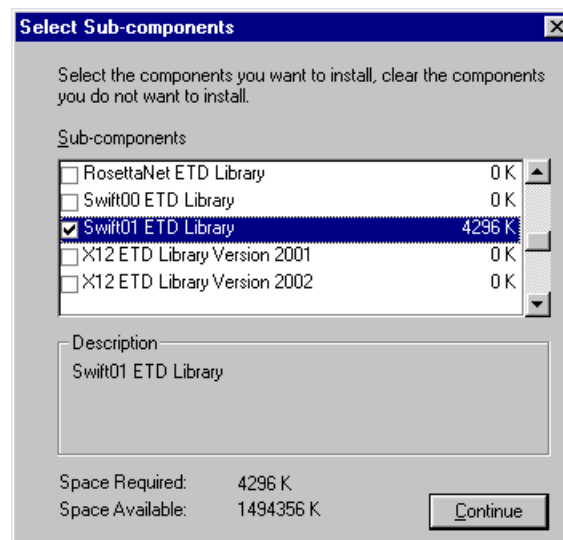
- 5 Check **Add-ons**, then click **Next**. Again follow the on-screen instructions.
- 6 When the **Select Components** dialog box appears, highlight—but do not check—**ETD Libraries** and then click **Change**.

Figure 5 Select Components Dialog (1)



- 7 When the **Select Sub-components** dialog box appears, check the **Swift01 ETD Library**.

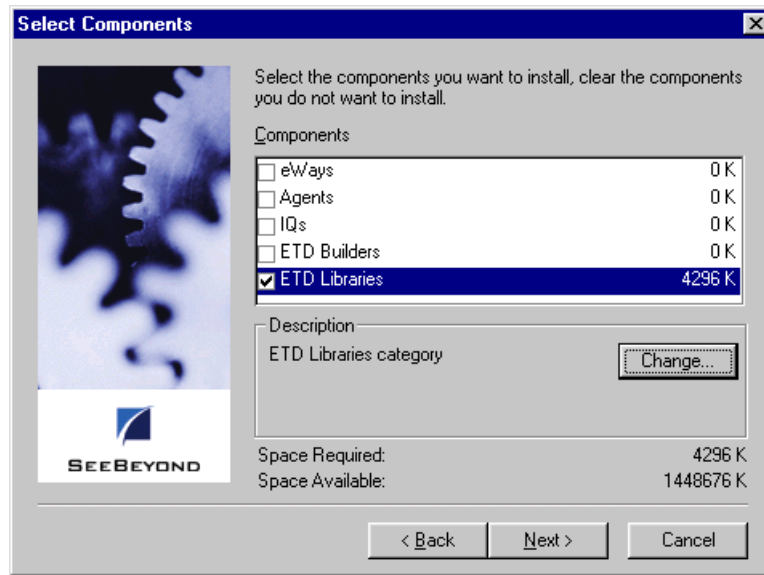
Figure 6 Select Sub-components Dialog



**Note:** *Installing the SWIFT 2001 library installs both the Monk and Java versions; however, only the size of the Monk version is shown in the **Space Required** field. The Java version is substantially larger than the Monk version.*

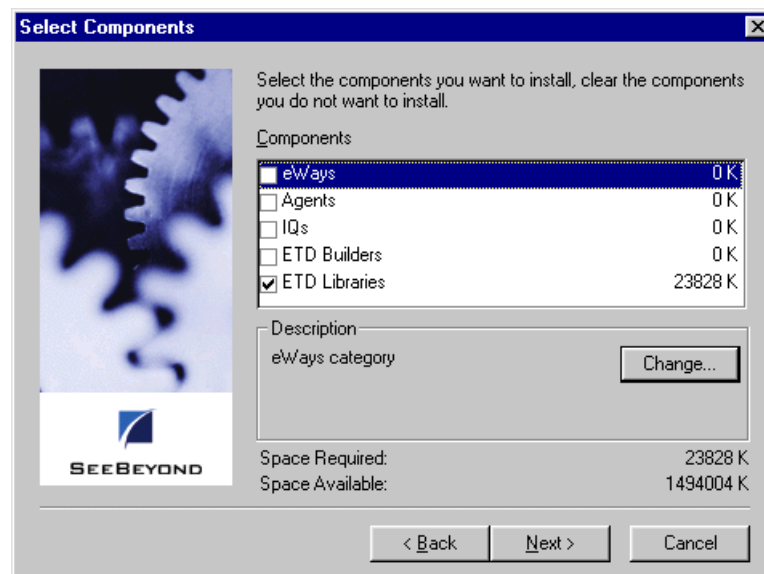
- 8 Click **Continue**, and the **Select Components** dialog box reappears.

Figure 7 Select Components Dialog (2)



- 9 To display the combined size of the Monk and Java libraries, click Next to display the next window, then Back to return to the Select Components dialog.

Figure 8 Select Components Dialog (3)



- 10 Now the Space Required field registers the combined size of the libraries to be installed. Click Next and continue with the installation.



---

## 2.3 UNIX Systems

**Note:** *Be sure to install the template files in the suggested installation directory. The installation utility detects and suggests the appropriate installation directory. Unless you are directed to do so by SeeBeyond support personnel, do not change the suggested installation directory setting.*

### To Install the SWIFT ETD Library on UNIX

- 1 Log in as **user** on the workstation containing the CD-ROM drive and, if necessary, mount the CD-ROM drive.
- 2 Insert the CD-ROM into the drive.
- 3 At the shell prompt, type:  
**cd /cdrom**
- 4 Start the installation script by typing:  
**setup.sh**  
A menu of options appears.
- 5 Select the **e\*Gate Addon Applications** option.
- 6 Follow the rest of the on-screen instructions to install the SWIFT template files.

**Note:** *Currently during 4.5.1 installation, if one of the swift01 versions (Monk or Java) is installed, selecting the other to install prompts an error message that ETD Library has already been installed. The workaround is to finish and exit the installation process, then start installation setup again and this time select the other version type to install.*

## 2.4 Files and Directories

Installing the SWIFT ETD templates places files within the e\*Gate directory tree, and commits them to the default schema on the Registry Host. The Java library files are placed in the following path:

```
eGate\Server\registry\repository\default\etd\templates\Swift01
  \<type>\
```

where **type** is either **full** or **slim**. Both **full** and **slim** versions are installed automatically for the selected library year. The file names are identical for the **full** and **slim** versions, so they must be located in separate directories.

The Message Type template files comprise a set of three files for each SWIFT Message Type. Each set has the form:

```
Mt<nnn>.jar
Mt<nnn>.ssc
mt<nnn>.xsc
```

where **nnn** represents the three-digit SWIFT Message Type number. The full set of SWIFT Message Types for which ETDs are installed is listed in [Chapter 3](#).

In addition, sets of **fin\_ack** and **SWIFT\_LRP** files also are installed in these same directories for use as Logical Reply templates (see [Logical Replies](#) on page 10):

**Table 1** Installed Files

Java Library Files	
\Swift01\full\	Fin_ack.jar Fin_ack.ssc fin_ack.xsc Mt<nnn>.jar Mt<nnn>.ssc mt<nnn>.xsc SWIFT_LRP.jar SWIFT_LRP.ssc SWIFT_LRP.xsc
\Swift01\slim\	Fin_ack.jar Fin_ack.ssc fin_ack.xsc Mt<nnn>.jar Mt<nnn>.ssc mt<nnn>.xsc SWIFT_LRP.jar SWIFT_LRP.ssc SWIFT_LRP.xsc

where **nnn** = SWIFT Message Type number.

# The SWIFT ETD Library

This chapter describes, and provides a cross-reference for, the SWIFT ETD Library.

---

## 3.1 SWIFT Message Types

SWIFT groups message types into ten categories, as shown below. The tenth category comprises a group of messages that is common to the other nine categories.

### Category 1: Customer Payments and Cheques

- see [MT 1xx Messages](#) on page 20

### Category 2: Financial Institution Transfers

- see [MT 2xx Messages](#) on page 21

### Category 3: Treasury Markets - Foreign Exchange & Derivatives

- see [MT 3xx Messages](#) on page 22

### Category 4: Collections and Cash Letters

- see [MT 4xx Messages](#) on page 23

### Category 5: Securities Markets

- see [MT 5xx Messages](#) on page 24

### Category 6: Treasury Markets - Precious Metals & Syndications

- see [MT 6xx Messages](#) on page 27

### Category 7: Documentary Credits & Guarantees

- see [MT 7xx Messages](#) on page 28

### Category 8: Travellers Cheques

- see [MT 8xx Messages](#) on page 29

### Category 9: Cash Management & Customer Status

- see [MT 9xx Messages](#) on page 30

### Category n: Common Group Messages

- see [MT n9x Messages](#) on page 31

### 3.1.1 MT 1xx Messages

#### Customer Payments & Cheques

<b>SWIFT Message Type</b>	<b>Description</b>
MT 100	Customer Transfer
MT 101	Request for Transfer
MT 102	Multiple Customer Credit Transfer
MT 103	Single Customer Credit Transfer
MT 104	Customer Direct Debit
MT 105	EDIFACT Envelope
MT 106	EDIFACT Envelope
MT 107	General Direct Debit Message
MT 110	Advice of Cheque(s)
MT 111	Request for Stop Payment of a Cheque
MT 112	Status of a Request for Stop Payment of a Cheque
MT 121	EDIFACT FINPAY
MT 190	Advice of Charges, Interest and Other Adjustments
MT 191	Request for Payment of Charges, Interest and Other Expenses
MT 192	Request for Cancellation
MT 195	Queries
MT 196	Answers
MT 198	Proprietary Message
MT 199	Free Format Message

## 3.1.2 MT 2xx Messages

### Financial Institution Transfers

<b>SWIFT Message Type</b>	<b>Description</b>
MT 200	Financial Institution Transfer for its Own Account
MT 201	Multiple Financial Institution Transfer for its Own Account
MT 202	General Financial Institution Transfer
MT 203	Multiple General Financial Institution Transfer
MT 204	Financial Markets Direct Debit Message
MT 205	Financial Institution Transfer Execution
MT 206	Cheque Truncation Message
MT 207	Request for Financial Institution Transfer
MT 210	Notice to Receive
MT 256	Advice of Non-Payment of Cheques
MT 290	Advice of Charges, Interest and Other Adjustments
MT 291	Request for Payment of Charges, Interest and Other Expenses
MT 292	Request for Cancellation
MT 293	Information Service Message
MT 295	Queries
MT 296	Answers
MT 298	Proprietary Message
MT 299	Free Format Message

### 3.1.3 MT 3xx Messages

Treasury Markets, Foreign Exchange, Money Markets & Derivatives

<b>SWIFT Message Type</b>	<b>Description</b>
MT 300	Foreign Exchange Confirmation
MT 303	Forex/Currency Option Allocation Instruction
MT 304	Advice/Instruction of a Third Party Deal
MT 305	Foreign Currency Option Confirmation
MT 306	Foreign Currency Option
MT 320	Fixed Loan/Deposit Confirmation
MT 330	Call/Notice Loan/Deposit Confirmation
MT 340	Forward Rate Agreement Confirmation
MT 341	Forward Rate Agreement Settlement Confirmation
MT 350	Advice of Loan/Deposit Interest Payment
MT 360	Single Currency Interest Rate Derivative Confirmation
MT 361	Cross Currency Interest Rate Swap Confirmation
MT 362	Interest Rate Reset/Advice of Payment
MT 364	Single Currency Interest Rate Derivative Termination/Recouping Confirmation
MT 365	Single Currency Interest Rate Swap Termination/Recouping Confirmation
MT 390	Advice of Charges, Interest and Other Adjustments
MT 391	Request for Payment of Charges, Interest and Other Expenses
MT 392	Request for Cancellation
MT 395	Queries
MT 396	Answers
MT 398	Proprietary Message
MT 399	Free Format Message

### 3.1.4 MT 4xx Messages

#### Collections & Cash Letters

<b>SWIFT Message Type</b>	<b>Description</b>
MT 400	Collections: Advice of Payment
MT 405	Collections: Clean Collection
MT 410	Collections: Acknowledgment
MT 412	Collections: Advice of Acceptance
MT 416	Collections: Advice of Non-Payment/Non-Acceptance
MT 420	Collections: Tracer
MT 422	Collections: Advice of Fate and Request for Instructions
MT 430	Collections: Amendment of Instructions
MT 450	Cash Letters: Cash Letter Credit Advice
MT 455	Cash Letters: Cash Letter Credit Adjustment Advice
MT 456	Cash Letters: Advice of Dishonor
MT 490	Advice of Charges, Interest and Other Adjustments
MT 491	Request for Payment of Charges, Interest and Other Expenses
MT 492	Request for Cancellation
MT 495	Queries
MT 496	Answers
MT 498	Proprietary Message
MT 499	Free Format Message

### 3.1.5 MT 5xx Messages

#### Securities Markets

<b>SWIFT Message Type</b>	<b>Description</b>
MT 502	Order to Buy or Sell
MT 503	Collateral Claim
MT 504	Collateral Proposal
MT 505	Collateral Substitution
MT 506	Collateral and Exposure Statement
MT 507	Collateral Status and Processing Advice
MT 508	Intra-Position Advice
MT 509	Trade Status Message
MT 512	Securities Trade Confirmation
MT 513	Client Advice of Execution
MT 514	Trade Allocation Instruction
MT 515	Client Confirmation of Purchase or Sale
MT 516	Securities Loan Confirmation
MT 517	Trade Confirmation Affirmation
MT 518	Market-Side Securities Trade Confirmation
MT 520	Receive Free
MT 521	Receive Against Payment
MT 522	Deliver Free
MT 523	Deliver Against Payment
MT 524	Intra-Position Instruction
MT 526	General Securities Lending/Borrowing Message
MT 527	Triparty Collateral Instruction
MT 528	ETC Client-Side Settlement Instruction
MT 529	ETC Market-Side Settlement Instruction
MT 530	Confirmation of Receipt Free
MT 531	Confirmation of Receipt Against Payment
MT 532	Confirmation of Delivery Free
MT 533	Confirmation of Delivery Against Payment
MT 534	Notice of Settlement Problem
MT 535	Statement of Holdings
MT 536	Statement of Transactions
MT 537	Statement of Pending Transactions



<b>SWIFT Message Type</b>	<b>Description</b>
MT 538	Statement of Intra-Position Advice
MT 539	Advice of Receipt/Delivery of Securities
MT 540	Receive Free
MT 541	Receive Against Payment Instruction
MT 542	Deliver Free
MT 543	Deliver Against Payment Instruction
MT 544	Receive Free Confirmation
MT 545	Receive Against Payment Confirmation
MT 546	Deliver Free Confirmation
MT 547	Deliver Against Payment Confirmation
MT 548	Settlement Status and Processing Advice
MT 549	Request for Statement/Status Advice
MT 550	Notice of Rights
MT 551	Notice of Event
MT 552	Notice of Offer or Privilege
MT 553	Instruction to a Custodian
MT 554	Advice of Money Income
MT 555	Advice of Income in the Form of Securities
MT 556	Advice of Redemption
MT 557	Advice of Securities Proceeds
MT 558	Triparty Collateral Status and Processing Advice
MT 559	Paying Agent's Claim
MT 560	Notice of Bond or Shareholders' Meeting
MT 561	Proxy or Authorization and Instructions to Vote
MT 562	Corporate Action Status Report
MT 563	Corporate Action Confirmation
MT 564	Corporate Action Notification
MT 565	Corporate Action Instruction
MT 566	Corporate Action Confirmation
MT 567	Corporate Action Status and Processing Advice
MT 568	Corporate Action Narrative
MT 569	Triparty Collateral and Exposure Statement
MT 570	Request for Statement
MT 571	Statement of Holdings
MT 572	Statement of Transactions

<b>SWIFT Message Type</b>	<b>Description</b>
MT 573	Statement of Pending Transactions
MT 575	Statement of Combined Activity
MT 576	Statement of Open Orders
MT 577	Statement of Numbers
MT 578	Statement of Allegement
MT 579	Certificate Numbers
MT 580	Instruction to an International Clearing System
MT 581	Collateral Adjustment Message
MT 582	Reimbursement Claim or Advice
MT 583	Depot Management Advice
MT 584	Statement of ETC Pending Trades
MT 586	Statement of Settlement Allegements
MT 587	Depositary Receipt Instruction
MT 588	Depositary Receipt Confirmation
MT 589	Depositary Receipt Status and Processing Advice
MT 590	Advice of Charges, Interest and Other Adjustments
MT 591	Request for Payment of Charges, Interest and Other Expenses
MT 592	Request for Cancellation
MT 595	Queries
MT 596	Answers
MT 598	Proprietary Message
MT 599	Free Format Message

### 3.1.6 MT 6xx Messages

#### Treasury Markets, Precious Metals

<b>SWIFT Message Type</b>	<b>Description</b>
MT 600	Precious Metal Trade Confirmation
MT 601	Precious Metal Option Confirmation
MT 604	Precious Metal Transfer/Delivery Order
MT 605	Precious Metal Notice to Receive
MT 606	Precious Metal Debit Advice
MT 607	Precious Metal Credit Advice
MT 608	Statement of a Metal Account
MT 609	Statement of Metal Contracts
MT 643	Notice of Drawdown/Renewal
MT 644	Advice of Rate and Amount Fixing
MT 645	Notice of Fee Due
MT 646	Payment of Principal and/or Interest
MT 649	General Syndicated Facility Message
MT 690	Advice of Charges, Interest and Other Adjustments
MT 691	Request for Payment of Charges, Interest and Other Expenses
MT 692	Request for Cancellation
MT 695	Queries
MT 696	Answers
MT 698	Proprietary Message
MT 699	Free Format Message

### 3.1.7 MT 7xx Messages

#### Treasury Markets, Syndication

<b>SWIFT Message Type</b>	<b>Description</b>
MT 700	Issue of a Documentary Credit
MT 701	Issue of a Documentary Credit
MT 705	Pre-Advice of a Documentary Credit
MT 707	Amendment to a Documentary Credit
MT 710	Advice of a Third Bank's Documentary Credit
MT 711	Advice of a Third Bank's Documentary Credit
MT 720	Transfer of a Documentary Credit
MT 721	Transfer of a Documentary Credit
MT 730	Acknowledgment
MT 732	Advice of Discharge
MT 734	Advice of Refusal
MT 740	Authorization to Reimburse
MT 742	Reimbursement Claim
MT 747	Amendment to an Authorization to Reimburse
MT 750	Advice of Discrepancy
MT 752	Authorization to Pay, Accept or Negotiate
MT 754	Advice of Payment/Acceptance/Negotiation
MT 756	Advice of Reimbursement or Payment
MT 760	Guarantee
MT 767	Guarantee Amendment
MT 768	Acknowledgment of a Guarantee Message
MT 769	Advice of Reduction or Release
MT 790	Advice of Charges, Interest and Other Adjustments
MT 791	Request for Payment of Charges, Interest and Other Expenses
MT 792	Request for Cancellation
MT 795	Queries
MT 796	Answers
MT 798	Proprietary Message
MT 799	Free Format Message

### 3.1.8 MT 8xx Messages

#### Travellers Cheques

<b>SWIFT Message Type</b>	<b>Description</b>
MT 800	T/C Sales and Settlement Advice [Single]
MT 801	T/C Multiple Sales Advice
MT 802	T/C Settlement Advice
MT 810	T/C Refund Request
MT 812	T/C Refund Authorization
MT 813	T/C Refund Confirmation
MT 820	Request for T/C Stock
MT 821	T/C Inventory Addition
MT 822	Trust Receipt Acknowledgment
MT 823	T/C Inventory Transfer
MT 824	T/C Inventory Destruction/Cancellation Notice
MT 890	Advice of Charges, Interest and Other Adjustments
MT 891	Request for Payment of Charges, Interest and Other Expenses
MT 892	Request for Cancellation
MT 895	Queries
MT 896	Answers
MT 898	Proprietary Message
MT 899	Free Format Message

### 3.1.9 MT 9xx Messages

#### Cash Management & Customer Status

<b>SWIFT Message Type</b>	<b>Description</b>
MT 900	Confirmation of Debit
MT 910	Confirmation of Credit
MT 920	Request Message
MT 935	Rate Change Advice
MT 940	Customer Statement Message
MT 941	Balance Report
MT 942	Interim Transaction Report
MT 950	Statement Message
MT 970	Netting Statement
MT 971	Netting Balance Report
MT 972	Netting Interim Statement
MT 973	Netting Request Message
MT 985	Status Inquiry
MT 986	Status Report
MT 990	Advice of Charges, Interest and Other Adjustments
MT 991	Request for Payment of Charges, Interest and Other Expenses
MT 992	Request for Cancellation
MT 995	Queries
MT 996	Answers
MT 998	Proprietary Message
MT 999	Free Format Message

### 3.1.10 MT n9x Messages

#### Common Group Messages

<b>SWIFT Message Type</b>	<b>Description</b>
MT n90	Advice of Charges, Interest and Other Adjustments
MT n91	Request for Payment of Charges, Interest and Other Expenses
MT n92	Request for Cancellation
MT n95	Queries
MT n96	Answers
MT n98	Proprietary Message
MT n99	Free Format Message

Where n = 1 through 9.

# Index

## A

acknowledgement (logical reply) 10  
 Acknowledgment 28  
 Acknowledgment of  
   Guarantee Message 28  
   Trust Receipt 29  
 Advice of  
   Charges, Interest and Other Adjustments 20, 21,  
     22, 23, 26, 27, 28, 29, 30, 31  
   Cheque 20  
   Discharge 28  
   Discrepancy 28  
   Income in the Form of Securities 25  
   Loan/Deposit Interest Payment 22  
   Money Income 25  
   Non-Payment of Cheques 21  
   Payment/Acceptance/Negotiation 28  
   Rate and Amount Fixing 27  
   Receipt/Delivery of Securities 25  
   Redemption 25  
   Reduction or Release 28  
   Refusal 28  
   Reimbursement Claim 26  
   Reimbursement or Payment 28  
   Securities Proceeds 25  
   Third Bank's Documentary Credit 28  
 Advice/Instruction of a Third Party Deal 22  
 Alert Notifier 11  
 Allegement Statement 26  
 Amendment to  
   Authorization to Reimburse 28  
   Documentary Credit 28  
 Answers 20, 21, 22, 23, 26, 27, 28, 29, 30, 31  
 Authorization to  
   Pay, Accept or Negotiate 28  
   Reimburse 28  
 Autorun 14

## B

Balance Report 30  
 Bond/Shareholders' Meeting Notice 25  
 Buy/Sell Order 24

## C

Call/Notice Loan/Deposit Confirmation 22  
 Cancellation  
   Request 20, 22, 23, 26, 27, 28, 29, 30, 31  
 CAS 10  
 Cash Letters  
   Advice of Dishonor 23  
   Cash Letter Credit Adjustment Advice 23  
   Cash Letter Credit Advice 23  
 CD-ROM 14, 17  
 Certificate Numbers 26  
 Cheque  
   Advice of 20  
   Advice of Non-Payment 21  
   Stop Payment Request 20  
   Stop Payment Status 20  
   Truncation Message 21  
 Claim  
   Collateral 24  
   Paying Agent's 25  
   Reimbursement 26, 28  
 Client Advice of Execution 24  
 Client Confirmation of Purchase or Sale 24  
 Collateral  
   Adjustment Message 26  
   Claim 24  
   Proposal 24  
   Status and Processing Advice 24  
   Substitution 24  
 Collateral and Exposure Statement 24  
 Collections  
   Acknowledgment 23  
   Advice of Acceptance 23  
   Advice of Fate and Request for Instructions 23  
   Advice of Non-Payment/Non-Acceptance 23  
   Advice of Payment 23  
   Amendment of Instructions 23  
   Clean Collection 23  
   Tracer 23  
 Combined Activity Statement 26  
 Confirmation of  
   Call/Notice Loan/Deposit 22  
   Corporate Action 25  
   Credit 30  
   Debit 30  
   Deliver Against Payment 25  
   Deliver Free 25  
   Delivery Against Payment 24  
   Delivery Free 24  
   Depository Receipt 26  
   Fixed Loan/Deposit 22  
   Foreign Currency Option 22  
   Foreign Exchange 22



- Forward Rate Agreement 22
  - Forward Rate Agreement Settlement 22
  - Market-Side Securities Trade 24
  - Precious Metal Option 27
  - Precious Metal Trade 27
  - Purchase or Sale 24
  - Receipt Against Payment 24
  - Receipt Free 24
  - Receive Against Payment 25
  - Receive Free 25
  - Securities Loan 24
  - Securities Trade 24
  - Corporate Action
    - Confirmation 25
    - Instruction 25
    - Narrative 25
    - Notification 25
    - Status and Processing Advice 25
    - Status Report 25
  - Credit
    - Confirmation 30
    - Transfer 20
  - Cross Currency Interest Rate Swap Confirmation 22
  - Customer
    - Direct Debit 20
    - Statement Message 30
    - Transfer 20
- D**
- Debit Confirmation 30
  - default schema 18
  - Deliver Against Payment 24
    - Confirmation 25
    - Instruction 25
  - Deliver Free 24, 25
    - Confirmation 25
  - Delivery Against Payment Confirmation 24
  - Delivery Free Confirmation 24
  - Delivery Report 10
  - Depository Receipt
    - Confirmation 26
    - Instruction 26
    - Status and Processing Advice 26
  - Depot Management Advice 26
  - directory tree 18
  - Discharge, Advice of 28
  - Discrepancy, Advice of 28
  - Documentary Credit
    - Advice of Third Bank's 28
    - Amendment 28
    - Issue 28
    - Pre-Advice 28
    - Transfer 28
  - Drawdown/Renewal Notice 27
- E**
- e\*Way 6
  - EDIFACT
    - Envelope 20
    - FINPAY 20
  - ETC
    - Client-Side Settlement Instruction 24
    - Market-Side Settlement Instruction 24
    - Pending Trades Statement 26
  - Event Type Definition (ETD) 6
    - full version 7
    - slim version 7
- F**
- Fee Due Notice 27
  - field tag 6
  - Financial Institution
    - Transfer 21
    - Transfer Execution 21
    - Transfer for its Own Account 21
    - Transfer Request 21
  - Financial Markets Direct Debit Message 21
  - Fixed Loan/Deposit Confirmation 22
  - Foreign Currency
    - Option 22
    - Option Confirmation 22
  - Foreign Exchange Confirmation 22
  - Forex/Currency Option Allocation Instruction 22
  - Forward Rate Agreement
    - Confirmation 22
    - Settlement Confirmation 22
  - Free Format Message 20, 21, 22, 23, 26, 27, 28, 29, 30, 31
    - full version 7
- G**
- General Direct Debit Message 20
  - General Financial Institution Transfer 21
  - General Securities Lending/Borrowing Message 24
  - General Syndicated Facility Message 27
  - Guarantee 28
    - Amendment 28
    - Message Acknowledgment 28
- H**
- header block 6
  - Holdings Statement 24, 25

**I**

Information Service Message 21  
 installation procedures  
     UNIX systems 17  
     Windows systems 14  
 installation requirements 12  
 InstallShield 14  
 Instruction to  
     Custodian 25  
     International Clearing System 26  
 Intelligent Adapter 6  
 Interest Rate Reset/Advice of Payment 22  
 Interim Transaction Report 30  
 Intra-Position  
     Advice 24  
     Advice Statement 25  
     Instruction 24  
 Inventory Addition 29  
 Issue of a Documentary Credit 28

**L**

logical reply (acknowledgement) 10  
     LRP\_FAILURE 11  
     LRP\_SUCCESS 11

**M**

Market-Side Securities Trade Confirmation 24  
 Message  
     Cheque Transaction 21  
     Collateral Adjustment 26  
     Customer Statement 30  
     Financial Markets Direct Debit 21  
     Free Format 20, 21, 22, 23, 26, 27, 28, 29, 30, 31  
     General Direct Debit 20  
     General Syndicated Facility 27  
     Netting Request 30  
     Proprietary 20, 21, 22, 23, 26, 27, 28, 29, 30, 31  
     Statement 30  
     Trade Status 24  
 Message Types 7  
 message validation 7  
 Multiple Customer Credit Transfer 20  
 Multiple Financial Institution Transfer for its Own  
 Account 21  
 Multiple General Financial Institution Transfer 21

**N**

Netting  
     Balance Report 30  
     Interim Statement 30

Request Message 30  
 Statement 30  
 Notice of  
     Bond or Shareholders' Meeting 25  
     Corporate Action 25  
     Drawdown/Renewal 27  
     Event 25  
     Fee Due 27  
     Offer or Privilege 25  
     Rights 25  
     Settlement Problem 24  
     T/C Inventory Destruction/Cancellation 29  
 Notice to Receive 21  
 Numbers Statement 26

**O**

Offer/Privilege Notice 25  
 Open Orders Statement 26  
 Order to Buy or Sell 24

**P**

Paying Agent's Claim 25  
 Payment Advice 28  
 Payment of Principal and/or Interest 27  
 Pending Transactions Statement 24, 26  
 Pre-Advice of a Documentary Credit 28  
 Precious Metal  
     Account Statement 27  
     Contracts Statement 27  
     Credit Advice 27  
     Debit Advice 27  
     Notice to Receive 27  
     Option Confirmation 27  
     Trade Confirmation 27  
     Transfer/Delivery Order 27  
 Principal and/or Interest Payment 27  
 Proposal  
     Collateral 24  
 Proprietary Message 20, 21, 22, 23, 26, 27, 28, 29, 30,  
 31  
 Proxy or Authorization and Instructions to Vote 25

**Q**

Queries 20, 21, 22, 23, 26, 27, 28, 29, 30, 31

**R**

Rate Change Advice 30  
 Receipt Against Payment Confirmation 24  
 Receipt/Delivery of Securities Advice 25

Receive Against Payment 24  
 Confirmation 25  
 Instruction 25  
 Receive Free 24, 25  
 Receive Free Confirmation 25  
 Refusal, Advice of 28  
 Registry Host 18  
 Reimbursement  
 Advice 28  
 Authorization 28  
 Authorization Amendment 28  
 Claim 28  
 Claim or Advice 26  
 Request for  
 Cancellation 20, 21, 22, 23, 26, 27, 28, 29, 30, 31  
 Financial Institution Transfer 21  
 Payment of Charges, Interest and Other  
 Expenses 20, 21, 22, 23, 26, 27, 28, 29, 30, 31  
 Statement 25  
 Statement/Status Advice 25  
 Stop Payment of a Cheque 20  
 T/C Stock 29  
 Transfer 20  
 Request Message 30

## S

Securities  
 General Lending/Borrowing Message 24  
 Loan Confirmation 24  
 Market-Side Trade Confirmation 24  
 Trade Confirmation 24  
 Settlement  
 Allegements Statement 26  
 ETC Client-Side Instruction 24  
 ETC Market-Side Instruction 24  
 Problem Notice 24  
 Status and Processing Advice 25  
 Single Currency  
 Interest Rate Derivative Confirmation 22  
 Interest Rate Derivative Termination/  
 Recouping Confirmation 22  
 Interest Rate Swap Termination/Recouping  
 Confirmation 22  
 Single Customer Credit Transfer 20  
 slim version 7  
 Statement Message 30  
 Statement of  
 Allegement 26  
 Combined Activity 26  
 ETC Pending Trades 26  
 Holdings 24, 25  
 Intra-Position Advice 25  
 Numbers 26

Open Orders 26  
 Pending Transactions 24, 26  
 Precious Metal Account 27  
 Precious Metal Contracts 27  
 Settlement Allegements 26  
 Transactions 24, 25  
 Triparty Collateral and Exposure 25  
 Statement/Status Advice Request 25  
 Status  
 Inquiry 30  
 Report 30  
 Status of a Request for Stop Payment of a Cheque 20  
 SWIFT Gold 2000 Certified e\*Way 10  
 SWIFT Message Categories 19  
 SWIFT Message Types 19  
 SWIFT Transport Network 10  
 SWIFTAlliance 10, 11  
 syntax checking 7

## T

T/C 29  
 Inventory Destruction/Cancellation Notice 29  
 Inventory Transfer 29  
 Multiple Sales Advice 29  
 Refund Authorization 29  
 Refund Confirmation 29  
 Refund Request 29  
 Sales and Settlement Advice 29  
 Settlement Advice 29  
 Stock Request 29  
 template versions  
 full 7  
 slim 7  
 text block 6  
 Trade  
 Allocation Instruction 24  
 Confirmation Affirmation 24  
 Securities Confirmation 24  
 Status Message 24  
 Trailer block 6  
 Transactions Statement 24, 25  
 Transfer  
 Customer 20  
 Customer Credit 20  
 Documentary Credit 28  
 Financial Institution 21  
 General Financial Institution 21  
 Multiple General Financial Institution 21  
 Request 20  
 T/C Inventory 29  
 Triparty  
 Collateral and Exposure Statement 25  
 Collateral Instruction 24

## Index

Collateral Status and Processing Advice 25  
Trust Receipt Acknowledgment 29

## U

UNIX installation 17

## V

validation 7

## W

Windows installation 14