

SeeBeyond™ eBusiness Integration Suite

e*Way Intelligent Adapter for DB2 Universal Database User's Guide

Release 4.5.2



The information contained in this document is subject to change and is updated periodically to reflect changes to the applicable software. Although every effort has been made to ensure the accuracy of this document, SeeBeyond Technology Corporation (SeeBeyond) assumes no responsibility for any errors that may appear herein. The software described in this document is furnished under a License Agreement and may be used or copied only in accordance with the terms of such License Agreement. Printing, copying, or reproducing this document in any fashion is prohibited except in accordance with the License Agreement. The contents of this document are designated as being confidential and proprietary; are considered to be trade secrets of SeeBeyond; and may be used only in accordance with the License Agreement, as protected and enforceable by law. SeeBeyond assumes no responsibility for the use or reliability of its software on platforms that are not supported by SeeBeyond.

e*Gate, e*Insight, e*Way, e*Xchange, e*Xpressway, eBI, iBridge, Intelligent Bridge, IQ, SeeBeyond, and the SeeBeyond logo are trademarks and service marks of SeeBeyond Technology Corporation. All other brands or product names are trademarks of their respective companies.

© 2001-2002 by SeeBeyond Technology Corporation. All Rights Reserved. This work is protected as an unpublished work under the copyright laws.

This work is confidential and proprietary information of SeeBeyond and must be maintained in strict confidence.

Version 20020514155656.

Contents

Chapter 1

Introduction	10
Overview	10
Intended Reader	10
Components	10
Operational Overview	11
Supported Operating Systems	11
System Requirements	11
Host System Requirements	11
GUI Host Requirements Using Merant Drivers	12
GUI Host Requirements Using IBM Drivers for DB2	12
Participating Host Requirements	12
Participating Host Requirements Using IBM Drivers for DB2	12
Host Requirements for an OS/390 Operating System	13
External System Requirements	13

Chapter 2

Installation	14
Installing the DB2 Universal Database e*Way on Windows NT or Windows 2000	14
Pre-installation	14
Installation Procedure	14
Installing the DB2 Universal Database e*Way on UNIX	15
Pre-installation	15
Installation Procedure	15
Files/Directories Created by the Installation	16
The db2cli.ini File	16
The db2java.zip	16
Installing the DB2 Universal Database e*Way on an OS/390	17
Installation Procedure	17
Running an OS/390 Participating Host with a Registry on another Host	17

Chapter 3

Connectivity	19
Registering the DataSource	19
ODBC Test	21
JDBC Test	23
OS/390 Binding	27

Chapter 4

e*Way Connection Configuration	28
Create e*Way Connections	28
DataSource Settings	29
class	29
CollectionID	30
DatabaseName	30
LocationName	30
PackageName	30
user name	30
password	31
PortNumber	31
ServerName	31
timeout	31
Connector Settings	31
type	31
class	32
transaction mode	32
connection establishment mode	32
connection inactivity timeout	33
connection verification interval	33
Connection Manager	33
Controlling When a Connection is Made	34
Controlling When a Connection is Disconnected	34
Controlling the Connectivity Status	34
Additional System Configurations	35
Configuration Considerations for Non-OS/390 Operating Systems	35
Configuring your e*Way to Connect to an External OS/390 System	35
For Pre-Existing Connections	45

Chapter 5

Implementation	46
Implementing Java-enabled Components	46
The Java Collaboration Service	47
Java-enabled Components	47

The Java ETD Builder	47
The Parts of the ETD	47
Using the DBWizard ETD Builder	48
The Generated ETDs	55
Editing an Existing .XSC Using the Database Wizard	56
Using ETDs with Tables, Views, Stored Procedures, and Prepared Statements	56
The Table	56
The select() Method	57
The insert() Method	57
The update() Method	58
The delete() Method	59
The View	59
The Stored Procedure	59
Collecting Data from Output Parameters	60
Returning Result Sets from Sybase, DB2, and SQL Server	60
Prepared Statement	62
Batch Operations	64
Database Configuration Node	65
Sample Scenario—Polling from a DB2 Database	65
Create the Schema	67
Add the Event Types and Event Type Definitions	67
Create the Collaboration Rules and the Java Collaboration	70
Add and Configure the e*Ways	74
Add and Configure the e*Way Connections	76
Add the IQs	77
Add and Configure the Collaborations	77
Run the Schema	79
Importing the OS/390 Sample Schema	80

Chapter 6

DB2 e*Way Methods 81

com.stc.eways.jdbcx.StatementAgent Class	81
resultSetTypeToString	82
resultSetDirToString	82
resultSetConcurToString	83
isClosed	83
queryName	83
queryDescription	83
sessionOpen	84
sessionClosed	84
resetRequested	84
getResultSetType	84
getResultSetConcurrency	85
setEscapeProcessing	85
setCursorName	85
setQueryTimeout	86
setQueryTimeout	86
getFetchDirection	86
setFetchDirection	86
getFetchSize	87
getMaxRows	87
setMaxRows	87
getMaxFieldSize	88

setMaxFieldSize	88
getUpdateCount	88
getResultSet	88
getMoreResults	89
clearBatch	89
executeBatch	89
cancel	89
getWarnings	90
clearWarnings	90
stmtInvoke	90
com.stc.eways.jdbcx.PreparedStatementAgent Class	91
sessionOpen	91
setNull	92
setNull	92
setObject	92
setObject	93
setObject	93
setBoolean	94
setByte	94
setShort	94
setInt	95
setLong	95
setFloat	95
setDouble	96
setBigDecimal	96
setDate	96
setDate	97
setTime	97
setTime	97
setTimestamp	98
setTimestamp	98
setString	98
setBytes	99
setAsciiStream	99
setBinaryStream	99
setCharacterStream	100
setArray	100
setBlob	101
setClob	101
setRef	101
clearParameters	102
addBatch	102
execute	102
executeQuery	102
executeUpdate	102
com.stc.eways.jdbcx.PreparedStatementResultSet Class	103
Constructor PreparedStatementResultSet	105
getMetaData	105
getConcurrency	105
getFetchDirection	105
setFetchDirection	106
getFetchSize	106
setFetchSize	106
getCursorName	107
close	107
next	107
previous	107
absolute	107
relative	108
first	108
isFirst	108
last	108
isLast	109

beforeFirst	109
isBeforeFirst	109
afterLast	109
isAfterLast	110
getType	110
findColumn	110
getObject	110
getObject	111
getObject	111
getObject	112
getBoolean	112
getBoolean	112
getByte	113
getShort	113
getShort	113
getInt	114
getInt	114
getLong	114
getLong	115
getFloat	115
getFloat	116
getDouble	116
getBigDecimal	116
getBigDecimal	117
getDate	117
getDate	117
getDate	118
getTime	118
getTime	118
getTime	119
getTime	119
getTimestamp	120
getTimestamp	120
getTimestamp	120
getTimestamp	121
getString	121
getString	121
getBytes	122
getBytes	122
getAsciiStream	123
getAsciiStream	123
getBinaryStream	123
getBinaryStream	124
getCharacterStream	124
getArray	124
getBlob	125
getBlob	125
getClob	125
getClob	126
getRef	126
getRef	127
wasNull	127
getWarnings	127
clearWarnings	127
getRow	128
refreshRow	128
insertRow	128
updateRow	128
deleteRow	128
com.stc.eways.jdbcx.SqlStatementAgent Class	129
Constructor SqlStatementAgent	129
Constructor SqlStatementAgent	129
execute	130

executeQuery	130
executeUpdate	131
addBatch	131
com.stc.eways.jdbcx.CallableStatementAgent Class	131
Constructor CallableStatementAgent	132
Constructor CallableStatementAgent	133
Constructor CallableStatement Agent	133
sessionOpen	133
registerOutParameter	134
registerOutParameter	134
registerOutParameter	134
wasNull	135
getObject	135
getObject	135
getBoolean	136
getByte	136
getShort	136
getInt	137
getLong	137
getFloat	137
getDouble	138
getBigDecimal	138
getDate	138
getDate	139
getTime	139
getTime	140
getTimestamp	140
getTimestamp	140
getString	141
getBytes	141
getArray	141
getBlob	142
getClob	142
getRef	143
com.stc.eways.jdbcx.TableResultSet Class	143
select	144
next	144
previous	144
absolute	145
relative	145
first	145
isFirst	146
last	146
isLast	146
beforeFirst	146
isBeforeFirst	147
afterLast	147
isAfterLast	147
findColumn	147
getAsciiStream	148
getAsciiStream	148
getBinaryStream	148
getBinaryStream	148
getCharacterStream	148
getCharacterStream	149
refreshRow	149
insertRow	149
updateRow	149
deleteRow	149
moveToInsertRow	149
moveToCurrentRow	150
cancelRowUpdates	150
rowInserted	150

Contents

rowUpdated	150
rowDeleted	150
wasNull	151

Appendix A

Appendix 152

ADO/ODBC Calls	152
ADO Calls	152
ODBC Calls	152

Index 153

Introduction

This document describes how to install and configure the Java-enabled e*Way Intelligent Adapter for DB2 Universal Database.

This Chapter Includes:

- [“Overview” on page 10](#)
- [“Operational Overview” on page 11](#)
- [“Supported Operating Systems” on page 11](#)

1.1 Overview

The DB2 Universal Database e*Way enables the e*Gate system to exchange data with external DB2 databases. This document describes how to install and configure the Java-enabled version of the DB2 Universal Database e*Way.

The DB2 Universal Database e*Way uses the Java library to issue SQL statements to interact with DB2 databases.

1.1.1 Intended Reader

The reader of this guide is presumed to be a developer or system administrator with responsibility for maintaining the e*Gate system; to have expert-level knowledge of Windows NT (or Windows 2000) and UNIX operations and administration; to be thoroughly familiar with DB2 and SQL functions; and to be thoroughly familiar with Windows-style GUI operations.

1.1.2 Components

The following components comprise the Java-enabled version of the DB2 Universal Database e*Way:

- **e*Way Connections:** Provide access to the information necessary for connecting to a specified external system.
- **stcjdbcx.jar:** Contains the logic required by the e*Way to interact with the external databases.

A complete list of installed files appears in [Table 1 on page 16](#).

1.2 Operational Overview

The Java-enabled DB2 Universal Database e*Way uses Java Collaborations to interact with one or more external databases. By using the Java Collaboration Service it is possible for e*Gate components—such as e*Way Intelligent Adapters (e*Ways) and Business Object Brokers (BOBs)—to connect to external databases and execute business rules written entirely in Java.

An e*Gate component is defined as *Java-enabled* based on the selection of the Java Collaboration Service in the Collaboration Rule setup. For more information on the Java Collaboration Service, see [“The Java Collaboration Service” on page 47](#).

1.3 Supported Operating Systems

Although the DB2 Universal Database e*Way components run on the platforms listed below, the Java-enabled ETD Editor and Collaboration Editor require the Windows NT operating system or the Windows 2000 operating system.

The DB2 Universal Database e*Way is available on the following operating systems:

- Windows 2000, Windows 2000 SP1, and Windows 2000 SP2
- Windows NT 4.0 SP6a
- Solaris 2.6, 7, and 8
- AIX 4.3.3
- HP-UX 11.0 and HP-UX 11i
- OS/390 V2R10

1.4 System Requirements

To use the DB2 Universal Database e*Way, you need the following:

- An e*Gate Participating Host, version 4.5.1 or later. For AIX operating systems, you need an e*Gate Participating Host, version 4.5.1. or later.
- A TCP/IP network connection.

The client components of the databases with which the e*Way interfaces have their own requirements; see that system’s documentation for more details.

1.4.1 Host System Requirements

The external system requirements are different for a GUI host machine—specifically a machine running the ETD Editor and the Java Collaboration Editor GUIs—versus a participating host which is used solely to run the e*Gate schema.

GUI Host Requirements Using Merant Drivers

To enable the GUI editors to communicate with the external system, the following items must be installed on any host machines running the GUI editors:

- Merant ODBC 4.0 driver included on the driver installation cd.

If the GUI host machine will also be executing the DB2 Universal Database e*Way, the host machine must also meet the **“Participating Host Requirements” on page 12.**

GUI Host Requirements Using IBM Drivers for DB2

If you have chosen not to use the Merant ODBC drivers, you will need to assure you have the following components installed and configured appropriately.

To enable the GUI editors to communicate with the external system, the following items must be installed on any host machines running the GUI editors:

- Universal Database (UDB) version 7.2 client library
- The UDB client library must be installed on Windows NT/2000 to utilize the build tool.
- Java JDK 1.3. The JDK can be installed during the e*Gate GUI installation process if it hasn't been installed already.
- Microsoft Data Access Components (MDAC) RTM version 2.6 or greater. This component is included in the e*Gate installation routine. If the GUI host machine will also be executing the UDB e*Way, the host machine must also meet the **“Participating Host Requirements” on page 12.**

Participating Host Requirements

The DB2 Universal Database e*Way requires that the following items be installed on the Participating Host:

- Merant JDBC 2.1 drivers. These drivers are located on the driver installation disk included with the e*Gate installation disks.

Participating Host Requirements Using IBM Drivers for DB2

If you have chosen not to use the Merant ODBC drivers, you will need to assure you have the following components installed and configured appropriately.

The UDB e*Way Installation program installs the Type 4 JDBC drivers required to connect to the external UDB database. These drives will be appropriate for most UDB implementations. However, for implementations using protocols other than Type 4, the appropriate client drivers must be installed.

A complete list of drivers from third party vendors can be found at:

<http://industry.java.sun.com/products/jdbc/drivers>

- The DB2 Universal Database client library. The client must be configured to communicate with the DB2 database.

- The most recent IBM DB2 software updates must be installed. These updates provide support for the latest Java functionality.

Note: *If you have chosen to use the IBM drivers for DB2, please be aware that these drivers do not support ResultSets.*

Host Requirements for an OS/390 Operating System

To use the DB2 Universal Database e*Way running on an OS/390 operating system, you must meet the requirements for the GUI Host and the Participating Host using the Merant DataDirect drivers. These drivers are located on the driver installation disk included with the e*Gate installation disks.

1.5 External System Requirements

The DB2 e*Way supports the following external systems:

- DB2 Universal Database (UDB) version 7.2
- DB2 Universal Database (UDB) version 6.1 when connecting to DB2 on an OS/390 operating system. Additionally, for XA support, DB2 Connect version 7.2 and the configuration of SyncPoint Manager are required.

Installation

This chapter describes how to install the DB2 Universal Database e*Way.

This Chapter Includes:

- “Installing the DB2 Universal Database e*Way on Windows NT or Windows 2000” on page 14
- “Installing the DB2 Universal Database e*Way on UNIX” on page 15
- “Files/Directories Created by the Installation” on page 16

2.1 Installing the DB2 Universal Database e*Way on Windows NT or Windows 2000

2.1.1 Pre-installation

- 1 Quit all Windows-based programs before running the setup program, including any anti-virus applications.
- 2 You must have Administrator privileges to install this e*Way.
- 3 To use the DB2 e*Way, you must also setup your DB2 environment. This is required, because the e*Way connection point will look for the database name in the database directory of the DB2 client configuration on the system.

2.1.2 Installation Procedure

To install the DB2 Universal Database e*Way on a Windows NT or Windows 2000 system

- 1 Log in as an Administrator on the workstation on which you want to install the e*Way.
- 2 Insert the e*Gate installation CD-ROM into the CD-ROM drive.
- 3 If the CD-ROM drive’s “Autorun” feature is enabled, the setup application should launch automatically; skip ahead to step 4. Otherwise, use Windows Explorer or the Control Panel’s **Add/Remove Applications** feature to launch the file **setup.exe** on the CD-ROM drive.

- 4 The InstallShield setup application will launch. Follow the on-screen instructions to install the e*Way.

Note: *Be sure to install the e*Way files in the suggested “client” installation directory. The installation utility detects and suggests the appropriate installation directory. Unless you are directed to do so by SeeBeyond support personnel, do not change the suggested “installation directory” setting.*

2.2 Installing the DB2 Universal Database e*Way on UNIX

2.2.1 Pre-installation

You do not require root privileges to install this e*Way. Log in under the user name that you wish to own the e*Way files. Be sure that this user has sufficient privilege to create files in the e*Gate directory tree.

To use the DB2 e*Way, you must also setup your DB2 environment. This is required, because the e*Way connection point will look for the database name in the database directory of the DB2 client configuration on the system.

2.2.2 Installation Procedure

To install the DB2 Universal Database e*Way on a UNIX system

- 1 Log in on the workstation containing the CD-ROM drive, and insert the CD-ROM into the drive.
- 2 If necessary, mount the CD-ROM drive.
- 3 At the shell prompt, type
cd /cdrom
- 4 Start the installation script by typing:
setup.sh
- 5 A menu of options will appear. Select the “install e*Way” option. Then, follow any additional on-screen directions.

Note: *Be sure to install the e*Way files in the suggested “client” installation directory. The installation utility detects and suggests the appropriate installation directory. Unless you are directed to do so by SeeBeyond support personnel, do not change the suggested “installation directory” setting.*

2.3 Files/Directories Created by the Installation

The DB2 Universal Database e*Way installation process will install the following files within the e*Gate directory tree. Files will be installed within the “egate\client” tree on the Participating Host and committed to the “default” schema on the Registry Host.

Table 1 Files created by the installation

e*Gate Directory	File(s)
	stcewdb2.ctl
etd\db2	com_stc_jdbcx_db2cfg.java
etd\db2	com_stc_jdbcx_db2cfg.xsc
ThirdParty\merant\classes	DGbase.jar
ThirdParty\merant\classes	DGdb2.jar
ThirdParty\merant\classes	DGutil.jar
ThirdParty\merant\classes	spy.jar
server\registry\repository\configs\db2	DB2.def
server\registry\repository\default\etd\	db2.ctl
server\registry\repository\default\etd	dbwizard.ctl

2.4 The db2cli.ini File

To use a Clob/Blob, you will need to set the LONGDATACOMPAT = 0 in the file db2cli.ini under the DB2 root directory. This will disable the LongVarChar, LongVarBinary, and LongVarGraphic. Refer to the IBM Installation and Configuration Supplement for more information.

2.5 The db2java.zip

The DB2 Universal Database e*Way uses the drivers contained in the **db2java.zip** file. To add the drivers, do the following:

Assure that the **db2java.zip** file from your DB2 Client software is installed into /Program Files/SQLLib/Java

From the e*Gate Enterprise Manager, click **File** on the tool bar. Click **Commit to Sandbox...** from the drop down menu. Browse to the /Program Files/SQLLib/Java folder and select the **db2java.zip** file. Click **Open**

From the e*Gate Collaboration, click **Tools** on the tool bar. Click **Options** from the drop down menu. **Add** the **db2java.zip** file.

2.6 Installing the DB2 Universal Database e*Way on an OS/390

2.6.1 Installation Procedure

To install the DB2 Universal Database e*Way on an OS/390 system

To install DB2 Universal Database e*Way on an OS/390 system, please refer to the *e*Gate Integrator Installation Guide*.

2.6.2 Running an OS/390 Participating Host with a Registry on another Host

When running the Registry Host on another machine, do the following to assure communication between the Registry Host and the Participating Host:

- 1 Run JDBC Test. See [JDBC Test](#) on page 23
- 2 From the Unix System Services, create a working directory.
- 3 From a command prompt shell to the newly created working directory.
- 4 FTP the following files from the Registry Host to the newly created working directory:

A The following file is in ASCII mode:

```
egate/server/registry/repository/default/ThirdParty/merant/db2bind/db2bind.sh
```

These files are in Binary mode and copied to

```
egate/server/registry/repsitory/default/ThirdParty/:  
  
merant/db2bind/db2bind.class  
  
sun/classes/jdbc2_0-stcdext.jar  
  
classes/DGbase.jar  
  
classes/DGdb2.jar  
  
classes/DGutil.jar  
  
classes/sljc_brand.jar  
  
classes/sljcx.jar  
  
classes/spy.jar
```

- 5 Customize the file:

```
egate/server/registry/repository/default/ThirdParty/merant/db2bind/db2bind.sh
```

by un commenting the following:

```
# export CLASSPATH=.:$PWD/jdbc2_0-
stdext.jar:$PWD/spy.jar:$PWD/DGbase.jar:$PWD/DGdb2.jar:$PWD/DGutil.jar
```

For example:

```
export CLASSPATH=.:$PWD/jdbc2_0-
stdext.jar:$PWD/spy.jar:$PWD/DGbase.jar:$PWD/DGdb2.jar:$PWD/DGutil.jar
```

Once you have completed the un commenting of the db2bind.sh script, you will need to customize the script by doing the following:

```
java db2bind USERID PASSWORD OS390r29.STC.COM S39LOC 446 E390COL
E390PAC
```

USERID	DB2Userid that has Bind Authority
PASSWORD	Password for the DB2 Userid
OS390R290.stc.com	Host name that DB2 is currently installed on
S390LOC	DB2 DDCCS/DRDA Location Name
446	DB2 DDCCS/DRDA Port Name
E390COL	DB2 Collection name (must not exceed 12 characters)
E390PAC	DB2 Package name (must not exceed 7 characters)

- 6 Issue the chmod command to assure the **db2bind.sh** script is executable.

```
chmod +x db2bind.sh
```

- 7 Run the **db2bind.sh** script to re-bind the DB2 Collections and Package for the OS/390. See [OS/390 Binding](#) on page 27

Connectivity

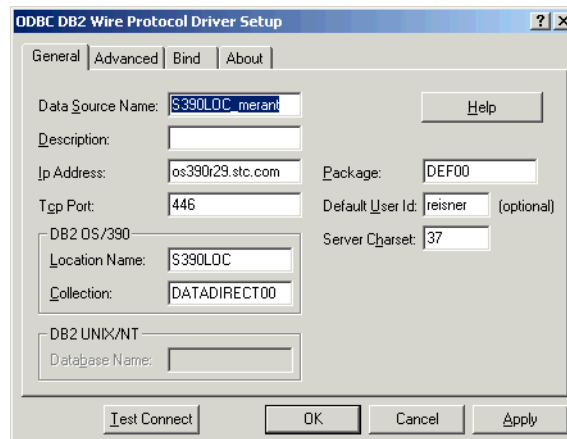
Before you can configure your DB2 e*Way, you will need to test the connectivity. Follow the instructions provided to assure connectivity.

3.1 Registering the DataSource

To register your datasource, do the following:

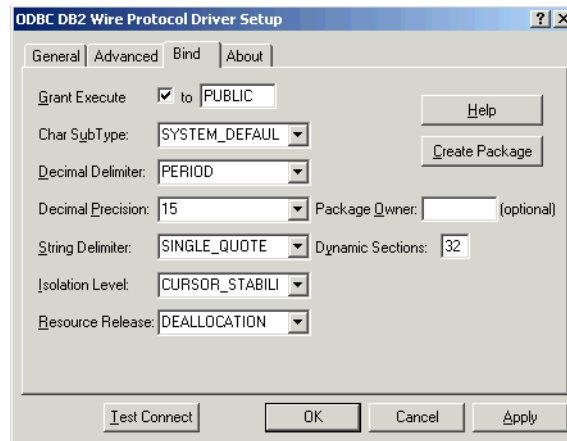
- 1 Install the Merant 4.0 ODBC drivers. To do this, follow the installation instructions provided with the drivers.
- 2 On the task bar, click the **Start** button, and then click **Control Panel**.
- 3 Click **Administrative Tools**.
- 4 Click **Data Sources (ODBC)**.
- 5 In the ODBC Data Source Administrator window, click the **User DSN** tab.
- 6 Click **Add**.
- 7 Select **Merant 4.0 32BIT DB2 Wire Protocol** and click **Finish**.
- 8 In the ODBC DB2 Wire Protocol and Driver Setup window, select the **General** tab. Enter the appropriate system information for your DB2 installation. See Figure 1.

Figure 1 ODBC DB2 Wire Protocol Driver Setup General Tab



- 9 Click on the **Bind** tab. See Figure 2.

Figure 2 ODBC DB2 Wire Protocol Driver Setup Bind Tab



- 10 Enter all the information required to make a connection to your database. Once completed, test the connection by clicking the **Test Connection** button.
- 11 Verify that the information in the Logon to DB2 Wire Protocol window is correct. Click the **OK** button. See Figure 3.

Figure 3 Logon to DB2 Wire Protocol



- 12 If the connection was successful, you will see **Connection Established!** in the Test Connect window. Click **OK**. See Figure 4.

Figure 4 Test Connect



3.2 ODBC Test

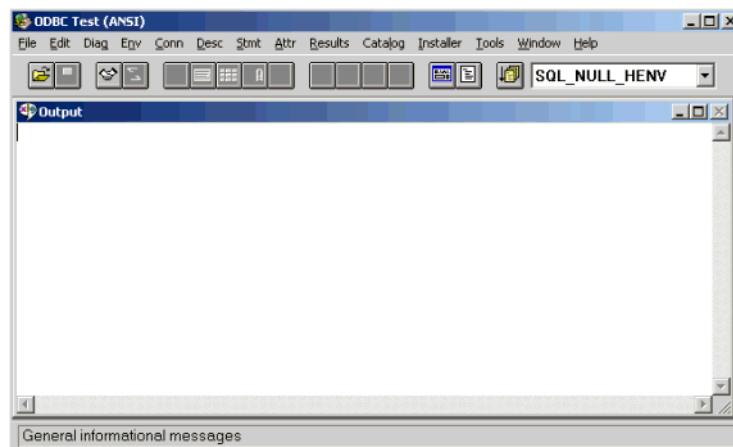
ODBC Test is a utility available from Microsoft. To use this utility, you will need to download it from www.microsoft.com.

- 1 Download ODBC Test and follow the online instructions provided by Microsoft to install this utility.

Once installed do the following:

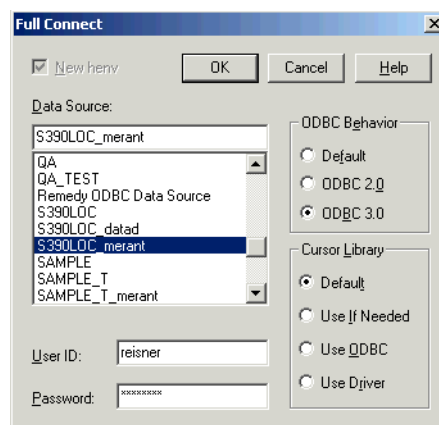
- 2 In the ODBC Test (ANSI) window, click the **Handshake** button on the toolbar to open the connection. See Figure 5.

Figure 5 ODBC Test - Handshake



- 3 In the Data Source dialog box, select the ODBC data source. Enter your **User ID** and **Password**. See Figure 6.

Figure 6 Full Connect



- 4 Click **OK**.
- 5 Once a connection has been established, the SeeBeyond ODBC driver must be unlocked for use with ODBC Test by setting two attributes. From the **Attr** menu,

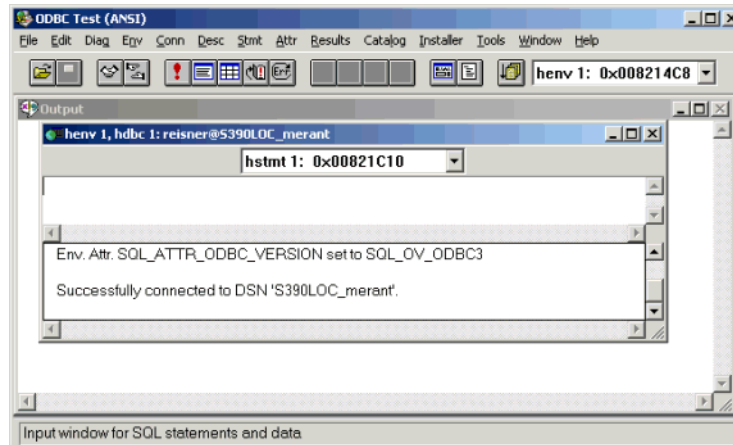
select **SQLSetConnectionOption**. Enter the following values. These values are case-sensitive and must be entered exactly as shown:

fOption: 1041, **vParam:** IVdg.LIC

fOption: 1042, **vParam:** STCDART2UI1DATAGATEQQQQQ

- 6 Click **OK**. See **Figure 7**.

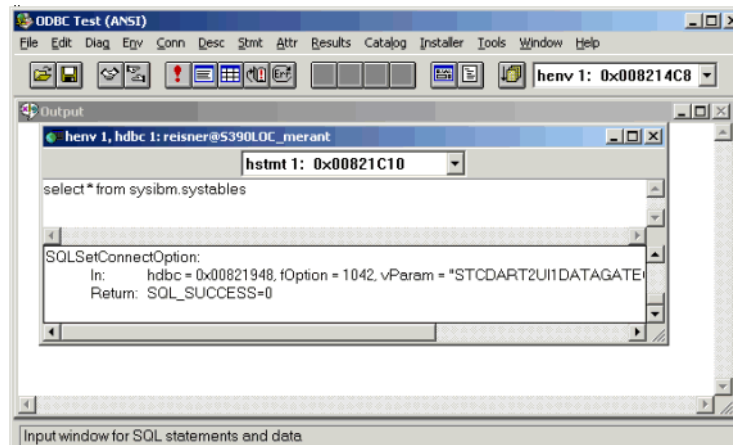
Figure 7 ODBC Test (ANSI) - Connection Established



- 7 Enter the following statement in the **Connection** dialog box. See **Figure 8**.

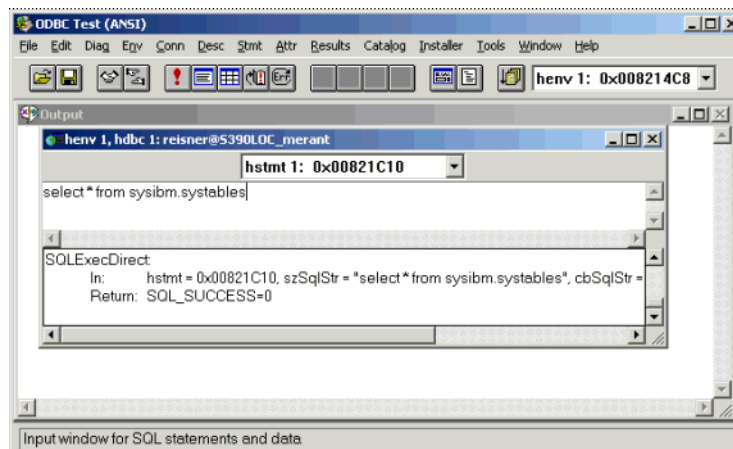
`select * from sysibm systables`

Figure 8 ODBC Test (ANSI) - Select Statement



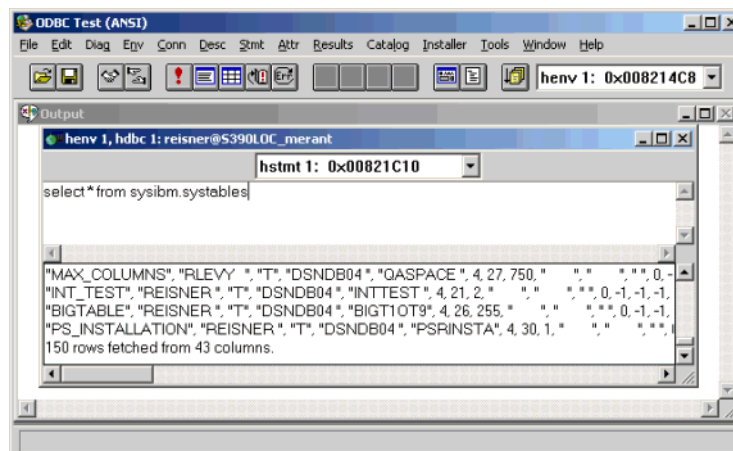
- 8 On the toolbar, click the **Execute** button.
- 9 If the connection was successful, you will see the **SQLExecDirect** return statement in the **Connection** dialog box. See **Figure 9**

Figure 9 ODBC Test (ANSI) - Connection Successful



- To view the data returned, click the **Get Data** button. The data returned by the query will display in the **Connection** dialog box. See Figure 10.

Figure 10 ODBC Test (ANSI) - Get Data



3.3 JDBC Test

JDBC Test is a utility provided by Merant for creating the packages used by JDBC and to test connectivity.

- Run JDBC Test from a command line by typing the following:

From Windows

```
c:\eGate\Server\registry\repository\default\ThirdParty\
merant\jdbctest\jdbctest.bat
```

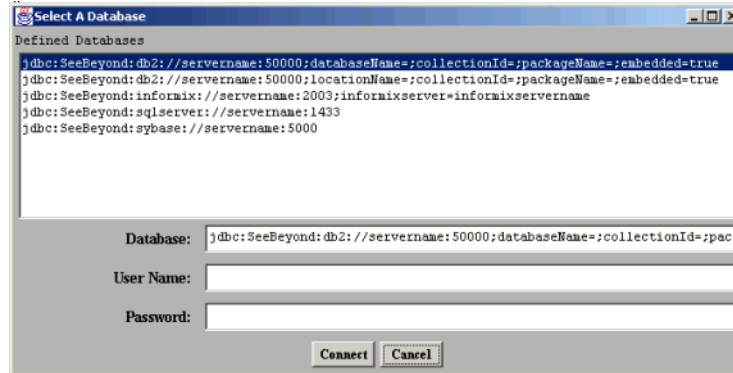
From UNIX

```
c:/eGate/Server/registry/repository/default/ThirdParty/
```

merant/jdbctest/jdbctest.sh

- 2 On the **Connection** menu, click **Connect to DB**.

Figure 11 Select a Database



- 3 For DB2 on Windows or UNIX, select the first line.
- 4 For DB2 on a mainframe system e.g. OS/390, select the second line.
- 5 Enter the information for each of the parameters that corresponds to the DB2 database you are connecting to at the **Database:** prompt.

Note: If you are connecting to a database for the first time using JDBC, you must first create the necessary packages to assure connectivity. You must have package creation privileges on the server.

- 6 To create the packages, add the following two parameters to the connection string:

Note: If creating the package for the first time, `replacePackage=TRUE` should be excluded

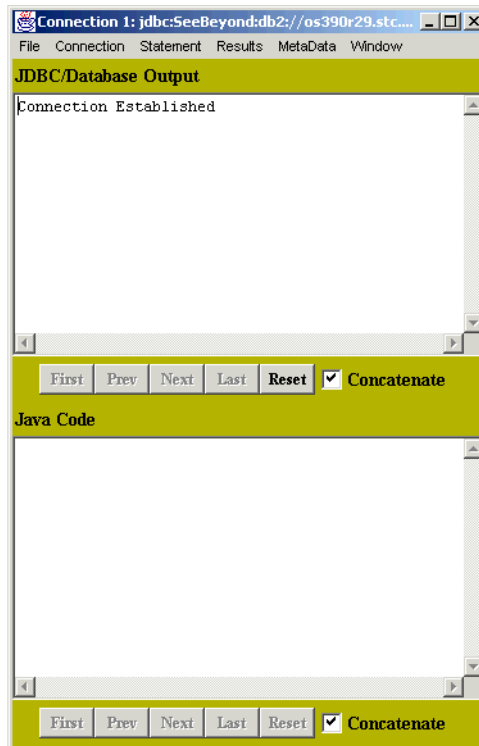
```
createDefaultPackage=TRUE;replacePackage=TRUE
```

For example:

```
jdbc:SeeBeyond:db2://os390r29.stc.com:446;locationName=S390LOC;  
collectionId=JDBCPKG;packageName=JDBCPKG;embedded=true;  
createDefaultPackage=TRUE;replacePackage=TRUE
```

- 7 Enter a **User Name:** and **Password:**
- 8 Click **Connect**.

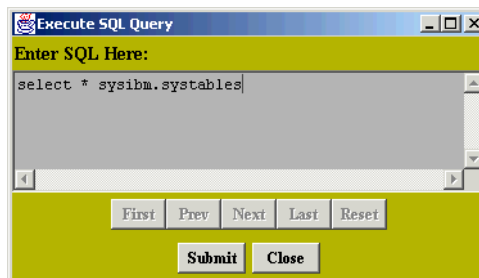
Figure 12 Connection 1 - Connection Established



- 9 On the **Connection** menu, click **Create Statement**.
- 10 On the **Statement** menu, click **Execute Stmt Query**.
- 11 Enter the following SQL statement. See Figure 13:

```
select * from sysibm.systables
```

Figure 13 Execute SQL Query



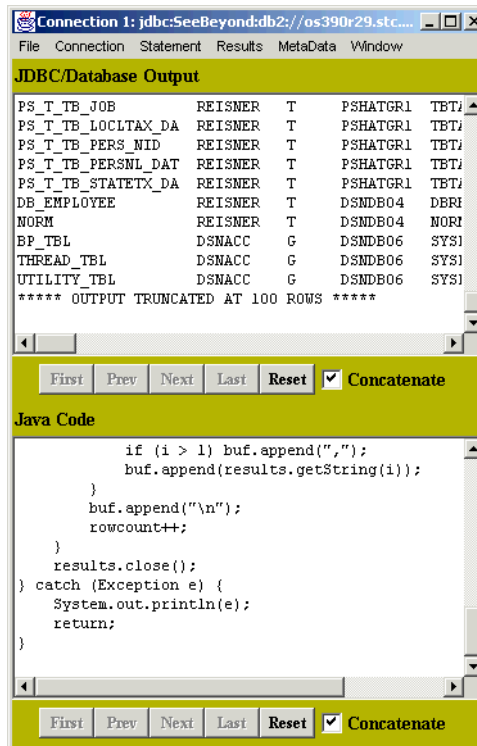
- 12 Click **Submit**.

Figure 14 Connection 1 - Connection Succeeded



- 13 On the **Results** menu, click **Show All Results** to see the results of the query. See Figure 15.

Figure 15 Connection 1 - Results



3.3.1 OS/390 Binding

If you are running the DB2 e*Way on an OS/390 operating system, you will need to re-bind the Collections and Package that you just created using **jdbctest**. To re-bind the Collections and Package, you will need to log into your OS/390 host system and run the **db2bind** script that is located in the **egate/client/ThirdParty/db2bind** directory. You will need to edit the USERID and PASSWORD to read as follows prior to running the script:

```
USERID PASSWORD OS390R29.stc.com S390LOC 446 E390COL E390PAC
```

e*Way Connection Configuration

This chapter describes how to configure the DB2 Universal Database e*Way Connections.

This Chapter Includes:

- “Create e*Way Connections” on page 28
- “DataSource Settings” on page 29
- “Connector Settings” on page 31
- “Configuration Considerations for Non-OS/390 Operating Systems” on page 35
- “Configuring your e*Way to Connect to an External OS/390 System” on page 35

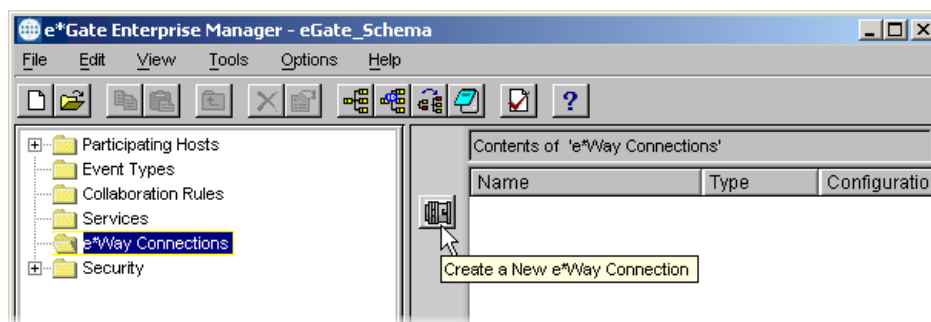
4.1 Create e*Way Connections


The e*Way Connections are created and configured in the Enterprise Manager.

To create and configure the e*Way Connections

- 1 In the Enterprise Manager’s Component editor, select the e*Way Connections folder.

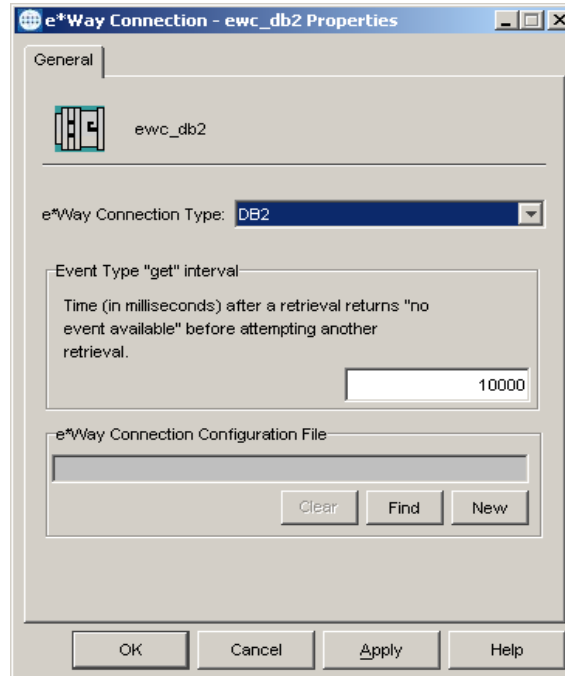
Figure 16 The e*Way Connections Folder



- 2 On the Palette, click the **New e*Way Connection** button .
- 3 The **New e*Way Connection Configuration** dialog box opens. Enter a name for the e*Way Connection and click OK.

- 4 Double-click the new e*Way Connection to open the e*Way Connection Properties dialog box. See [Figure 17 on page 29](#).

Figure 17 e*Way Connection Properties Dialog Box



- 5 In the **e*Way Connection Type** list, click **DB2**.
- 6 In the **Event Type “get” interval** box, enter an interval.
- 7 Click **New** to create a new e*Way Connection Configuration File.

The e*Way Connection Configuration File Editor will appear.

The e*Way Connection configuration file parameters are organized into the following sections:

- DataSource Settings
- connector

4.1.1 DataSource Settings

The DataSource settings define the parameters used to interact with the external database.

class

Description

Description

Specifies the Java class in the JDBC driver that is used to implement the `ConnectionPoolDataSource` interface.

Required Values

A valid class name.

The default is **com.SeeBeyond.jdbcx.db2.DB2DataSource**.

CollectionID

Description

The collection or group of packages to which a package is bound.

Required Values

Any valid string.

DatabaseName

Description

Specifies the name or alias of the database instance. The alias must match the database alias in the DB2 client's database directory

Required Values

Any valid string.

LocationName

Description

The name of the DB2 location that you want to access. This is used with OS/390.

Required Values

Any valid string.

PackageName

Description

Specifies the name, 7 character limit, of the package that the drive uses to process static and dynamic SQL.

Required Values

Any valid string.

user name

Description

Specifies the user name the e*Way uses to connect to the database.

Required Values

Any valid string.

password

Description

Specifies the password used to access the database.

Required Values

Any valid string.

PortNumber

Description

The TCP port number. PortNumber is used for DataSource connections only.

Required Values

Any valid string.

ServerName

Description

The IP address used for DataSource connections only.

Required Values

Any valid string.

timeout

Description

Specifies the login timeout in seconds.

Required Values

Any valid string. The default is 300 seconds.

4.1.2 Connector Settings

The Connector settings define the high-level characteristics of the e*Way Connection.

type

Description

Specifies the type of e*Way Connection. The current available type for JDBC connections is **DB**.

Required Values

The default is **DB**.

class

Description

Specifies the JAVA class name of the JDBC connector object.

Required Values

The default is **com.stc.eways.jdbcx.DbConnector**.

transaction mode

This parameter specifies how a transaction should be handled.

- **Automatic** — e*Gate will take care of transaction control and users should not issue a commit or rollback. If you are using XA, you must set your **connection establishment mode** and your **transaction mode** both to **Automatic**
- **Manual** — You will manually take care of transaction control by issuing a commit or rollback.

Required Values

The required values are **Automatic** or **Manual**. The default is set to **Automatic**.

Mixing XA-Compliant and XA-Noncompliant e*Way Connections

A Collaboration can be XA-enabled if and only if all its sources and destinations are XA-compliant e*Way Connections. However, XA-related advantages can accrue to a Collaboration that uses one (and only one) e*Way Connection that is transactional but not XA-compliant—in other words, it connects to exactly one external system that supports commit/rollback (and is thus transactional) but does not support two-phase commit (and is thus not XA-compliant). Please see the *e*Gate User's Guide* for usage and restrictions.

connection establishment mode

This parameter specifies how a connection with the database server is established and closed.

- **Automatic** indicates that the connection is automatically established when the collaboration is started and keeps the connection alive as needed. If you are using XA, you must set your **connection establishment mode** and your **transaction mode** both to **Automatic**.
- **OnDemand** indicates that the connection will be established on demand as business rules requiring a connection to the external system are performed. The connection will be closed after the methods are completed.
- **Manual** indicates that the user will explicitly call the connection connect and disconnect methods in their collaboration as business rules.

Required Values

The required values are **Automatic**, **OnDemand** or **Manual**. The default is set to **Automatic**.

Note: If you are using Manual connection establishment mode, you must also use Manual transaction mode.

connection inactivity timeout

This value is used to specify the timeout for the Automatic connection establishment mode. If this is set to 0, the connection will not be brought down due to inactivity. The connection is always kept alive; if it goes down, re-establishing the connection will automatically be attempted. If a non-zero value is specified, the connection manager will try to monitor for inactivity so that the connection is brought down if the timeout specified is reached.

Required Values

Any valid string.

connection verification interval

This value is used to specify the minimum period of time between checks for connection status to the database server. If the connection to the server is detected to be down during verification, your collaboration's onDown method is called. If the connection comes up from a previous connection error, your collaboration's onUp method is called.

Required Values

Any valid string.

4.2 Connection Manager

The Connection Manager allows you to define the connection functionality of your e*Way. You choose:

- When an e*Way connection is made.
- When to close the e*Way connection and disconnect.
- What the status of your e*Way connection is.
- When the connection fails, an OnConnectionDown method is called by the Collaboration

The Connection Manager was specifically designed to take full advantage of e*Gate 4.5.2 and higher's enhanced functionality. If you are running e*Gate 4.5.1 or earlier, this enhanced functionality is visible but will be ignored.

The Connection Manager is controlled in the e*Way configuration as described in [Connector Settings](#) on page 31. If you choose to manually control the e*Way connections, you may find the following chart helpful.

Figure 18 e*Way Connection Control methods

	Automatic	On-Demand	Manual
onConnectionUp	yes	no	no
onConnectionDown	yes	yes only if the connection attempt fails	no
Automatic Transaction (XA)	yes	no	no
Manual Transaction (XA)	yes	no	no
connect	no	no	yes
isConnect	no	no	yes
disconnect	no	no	yes
timeout or connect	yes	yes	no
verify connection interval	yes	no	no

Controlling When a Connection is Made

As a user, you can control when a connection is made. Using Connector Settings, you can choose to have e*Way connections controlled manually — through the Collaboration, or automatically — through the e*Way Connection Configuration. If you choose to control the connection you can specify the following:

- To connect when the Collaboration is loaded.
- To connect when the Collaboration is executed.
- To connect by using an additional connection method in the ETD.
- To connect by overriding any custom values you have assigned in the Collaboration.
- To connect by using the isConnected() method. The isConnected() method is called per connection if your ETD has multiple connections.

Controlling When a Connection is Disconnected

In addition to controlling when a connection is made, you can also manually or automatically control when an e*Way connection is terminated or disconnected. To control the disconnect you can specify:

- To disconnect at the end of a Collaboration.
- To disconnect at the end of the execution of the Collaborations Business Rules.
- To disconnect during a timeout.
- To disconnect after a method call.

Controlling the Connectivity Status

You can control how often the e*Way connection checks to verify if it is still alive and you can set how often it checks. See [Connector Settings](#) on page 31.

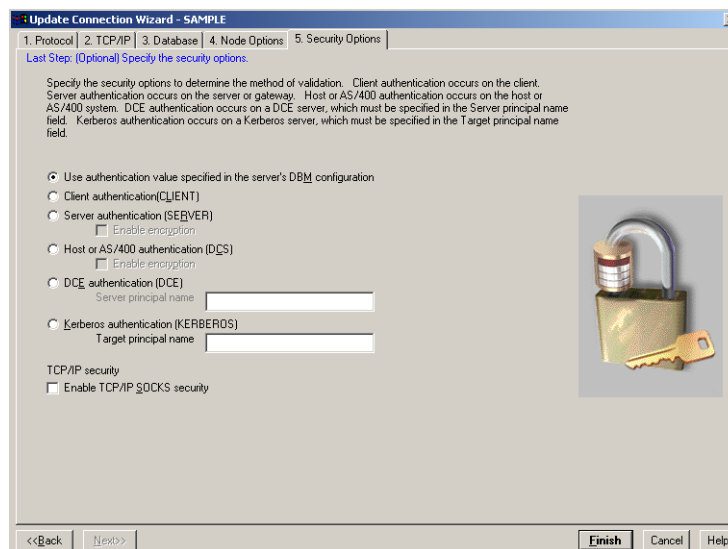
4.3 Additional System Configurations

We recommend the following configuration considerations.

4.3.1 Configuration Considerations for Non-OS/390 Operating Systems

If you are using the DB2 Connect 7.2 client on a non-OS/390 operating system and you are running in XA mode, you will need to set your **Add Database Wizard Security** option to use the authentication value specified in your Server's DBM configuration:

Figure 19 Add Database Wizard - Security for non-OS/390 Operating Systems



4.3.2 Configuring your e*Way to Connect to an External OS/390 System

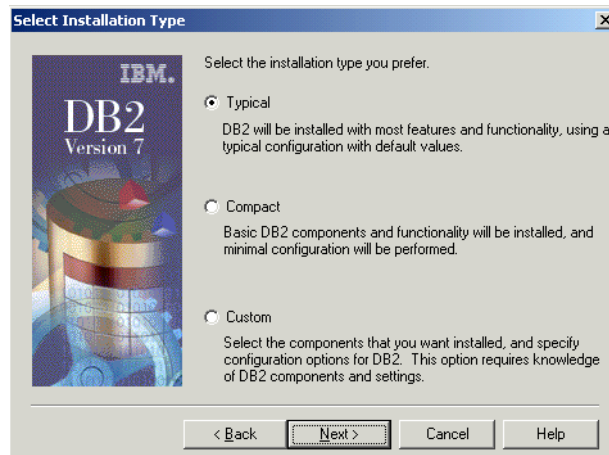
If you are connecting to an external OS/390 system, and you want to run XA, we recommend you try using the following configuration. However, every system is set up a bit differently and this configuration may not be best suited for your application. This is only a recommendation and does not suggest or imply that this is the only method or solution for running XA. For more information on how to best configure your particular system, please refer to IBM's Red Book or contact your IBM System Administrator to discuss your specific needs.

For our sample implementation, the following steps must be followed in the order they appear. Skipping steps or proceeding in any other order than what is presented here will produce unacceptable results.

- 1 Install DB2 Universal Database Personal Edition, Version 7.2 for Windows. XA is only available using Version 7.2.

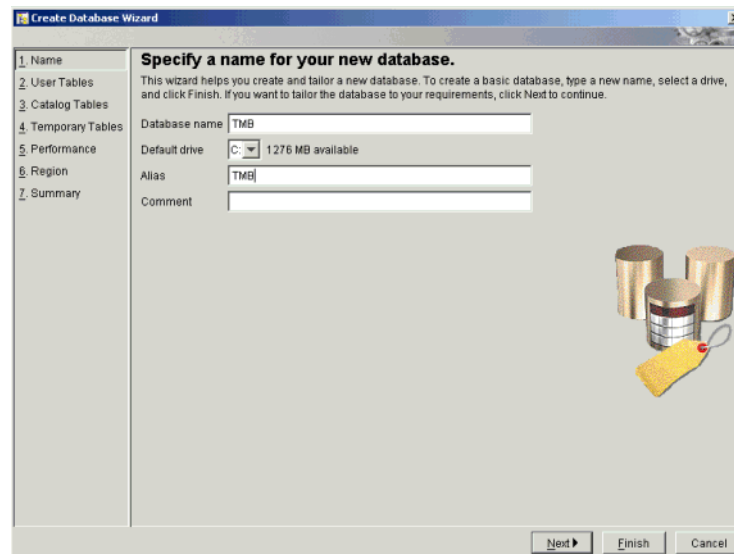
- From the **Select Installation Type** window, click **Typical**. Click **Next**.

Figure 20 DB2 - Select Installation Type



- From the **Create Database Wizard** window, create a new database by entering a database, the default drive, alias, and any comments. Click **Next**.

Figure 21 DB2 - Create Database Wizard



- Continue through the Installation process accepting all the default values for all remaining Wizard windows.
- At a DB2 Command Line Processor window type:
`db2 => update database manager configuration using tm_database TMB`
- Reboot your machine.

Installing DB2 Connect Personal Edition Version 7.2 for Windows

- Place the DB2 Connect Personal Edition Version 7.2 installation disk in your CD-ROM.

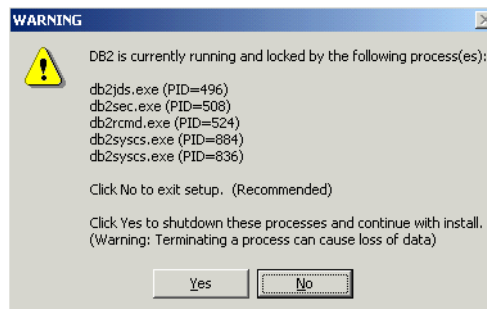
- 2 From the **Installation** window, click **Install**.

Figure 22 DB2 Connect Personal Edition Version 7.2 for Windows - Install



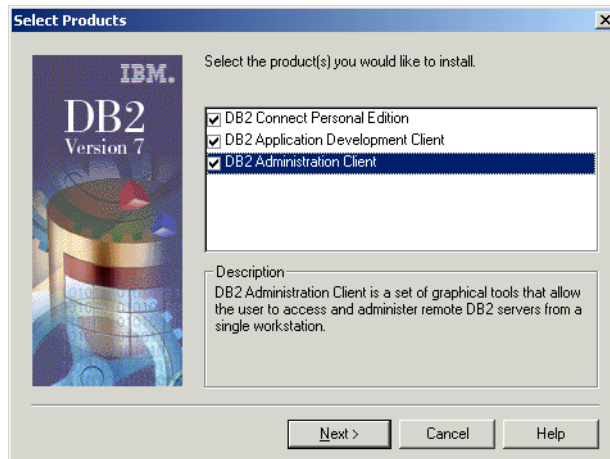
- 3 If you encounter the following warning window, click **Yes** to continue.

Figure 23 Warning Window



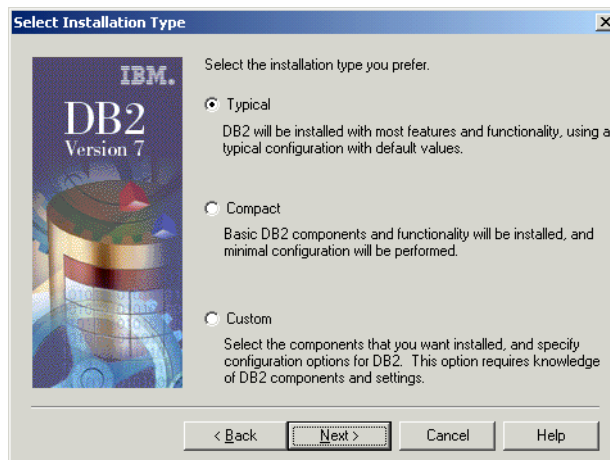
- 4 From the **Select Products** window, select all products to install.

Figure 24 DB2 - Select Products



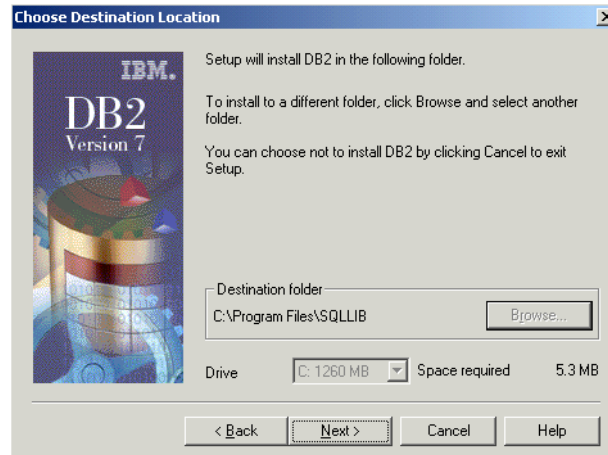
- 5 From the **Select Installation Type** window, click **Typical**. Click **Next**.

Figure 25 DB2 - Select Installation Type



- 6 Choose the folder you wish to install DB2 from the **Choose Destination Location** window. Click **Next**.

Figure 26 DB2 - Choose Destination Location

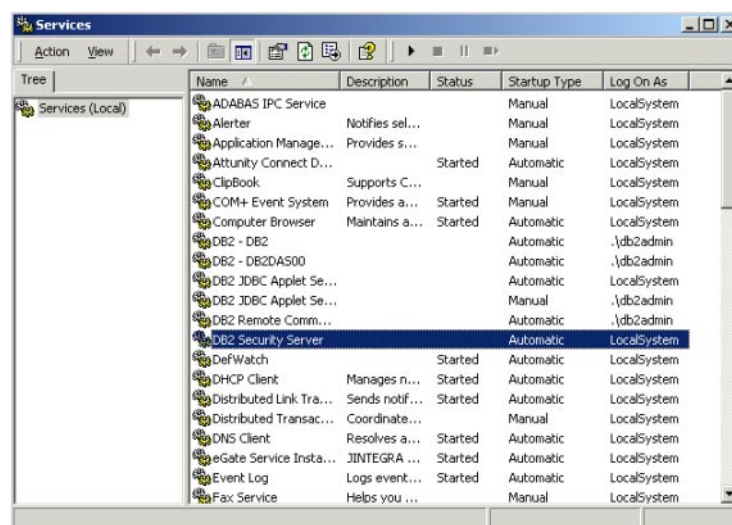


- 7 From the **Start Copying Files** window, click **Next**. DB2 will begin to copy files to location you specified.
- 8 Once the process has completed, reboot your machine.

Stopping the DB2 Related Services

- 1 On the desktop **Start** menu, click **Settings, Control Panel**.
- 2 On the **Control Panel**, click **Administrative Tools**.
- 3 On the **Administrative Tools** window, click **Component Services**.
- 4 From the **Component Services Tree** menu, click **Services (Local)**.
- 5 From the list of Services, highlight the DB2 Security Server. Make sure the services have been stopped.

Figure 27 Windows Services Window - DB2 Security Server Stopped



- 6 From a command line prompt, execute the following:

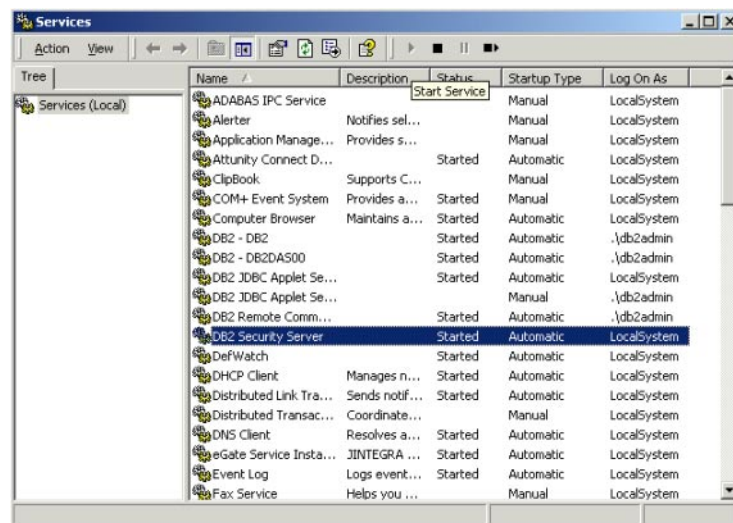
```
C:\Program Files\SQLLIB\java12>usejdbc2
```

7 The following output should display without any error messages:

```
UnZipSFX 5.31 of 31 May 1997, by Info-ZIP(Zip-Bugs@lists.wku.edu)
inflating: db2java.zip
inflating: db2jdbc.dll
inflating: db2ccs.exe
inflating: db2jd.exe
inflating: db2jds.exe
  1 file(s) copied
  1 file(s) copied
  1 file(s) copied
  1 file(s) copied
  1 file(s) copied
  1 file(s) copied
```

8 Restart the DB2 Security Server services.

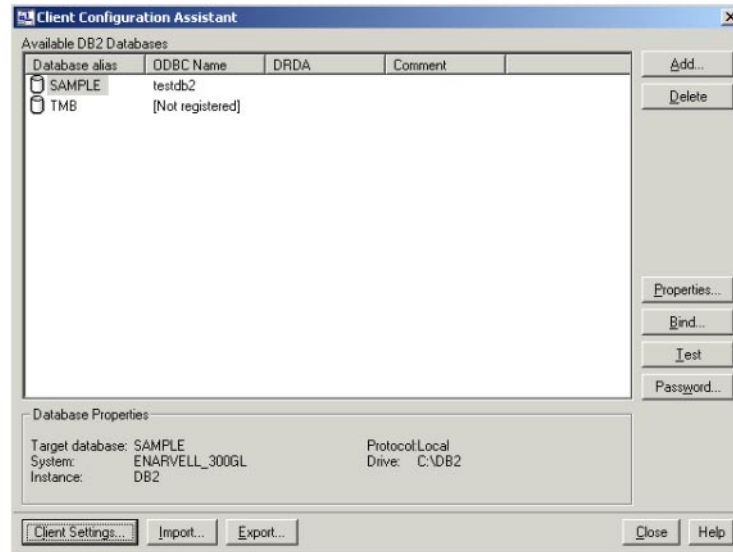
Figure 28 Windows Services Window - DB2 Security Server Restarted



Creating a Connection to DB2 on the OS/390

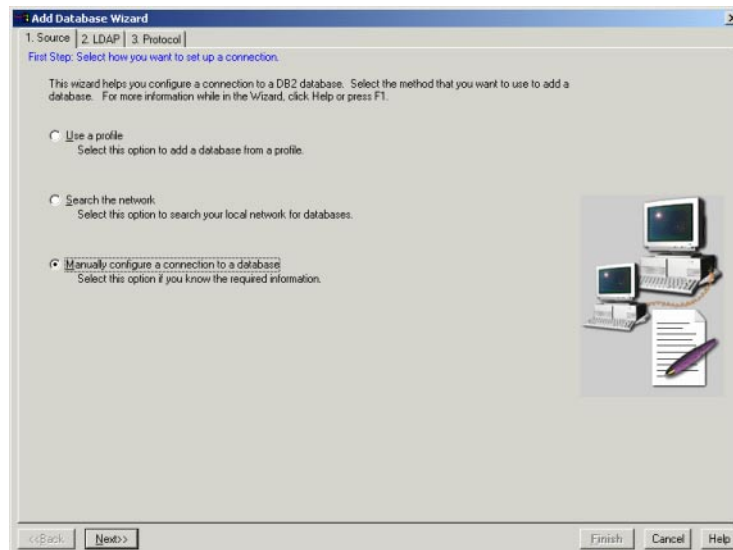
1 From the **IBM DB2 Client Configuration Assistant** window, click **Add**.

Figure 29 Client Configuration Assistant



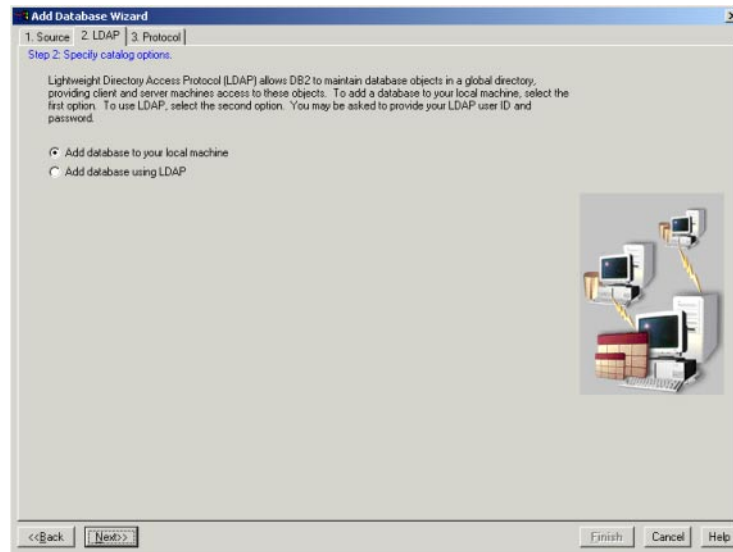
- 2 From the **Add Database Wizard** window's **Source** tab, click **Manually configure a connection to a database**. Click **Next**.

Figure 30 Add Database Wizard - Source Tab



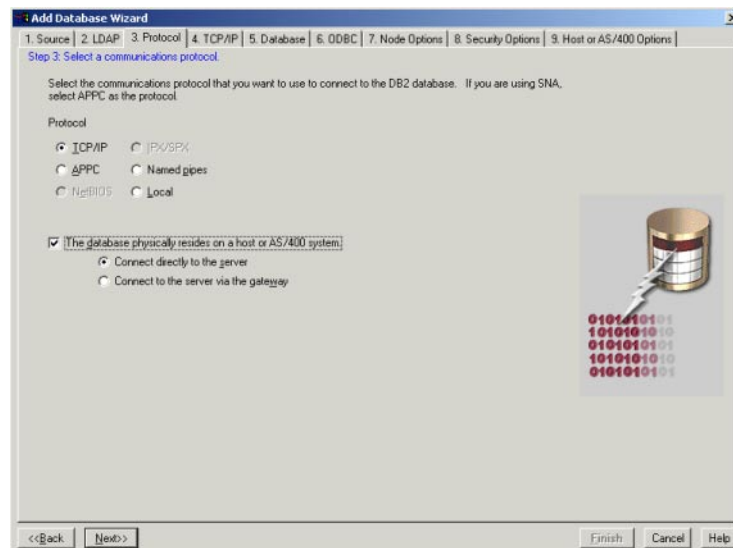
- 3 From the **Add Database Wizard** window's **LDAP** tab. Click **Add database to your local machine**. Click **Next**.

Figure 31 Add Database Wizard - LDAP Tab



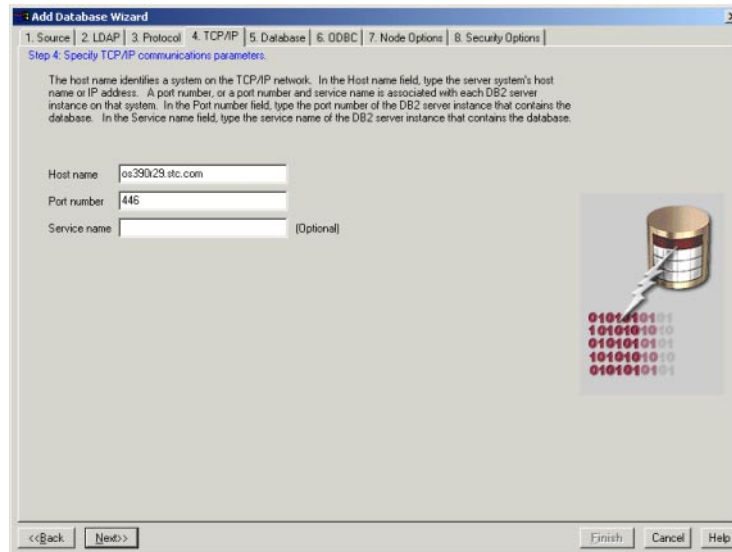
- 4 From the **Add Database Wizard** window's **Protocol** tab. Click **TCP/IP** from the Protocol dialog box. Select **The database physically resides on a host or AS/400 system**. Click **Connect directly to the server**. Click **Next**.

Figure 32 Add Database Wizard - Protocol Tab



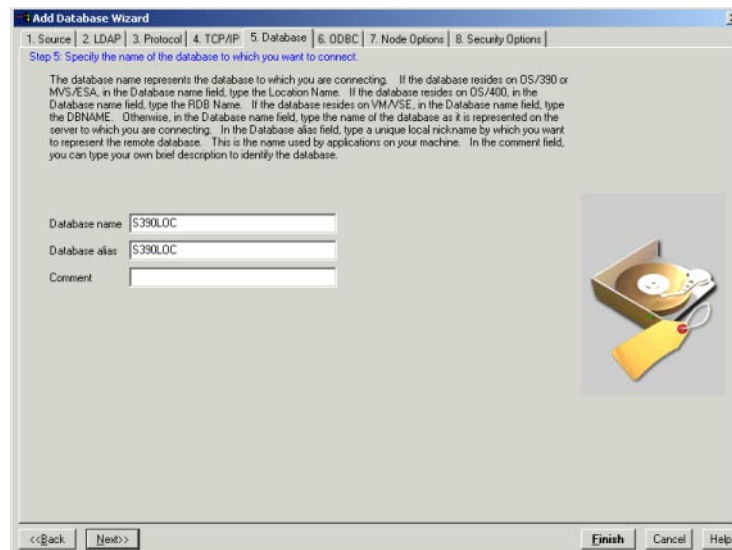
- 5 From the **Add Database Wizard** window's **TCP/IP** tab. Enter the **Host name** and **Port number**. Click **Next**.

Figure 33 Add Database Wizard - TCP/IP Tab



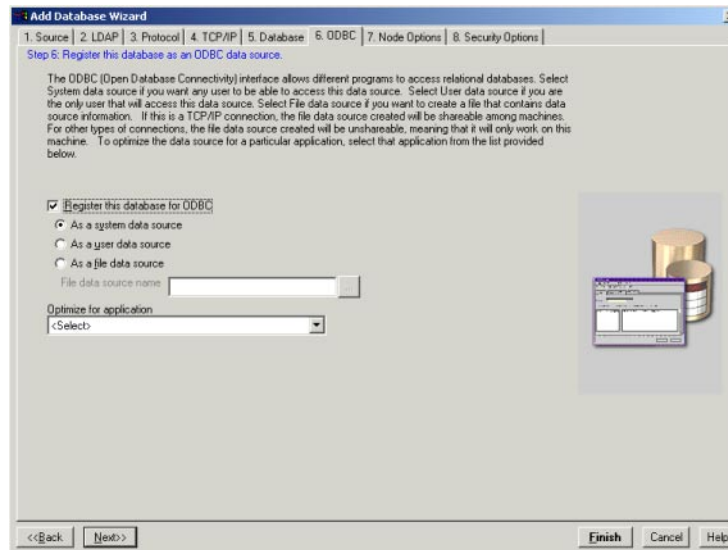
- 6 From the **Add Database Wizard** window's **Database** tab. Enter the name of your database, the database's alias, and any comments. Click **Next**.

Figure 34 Add Database Wizard - Database Tab



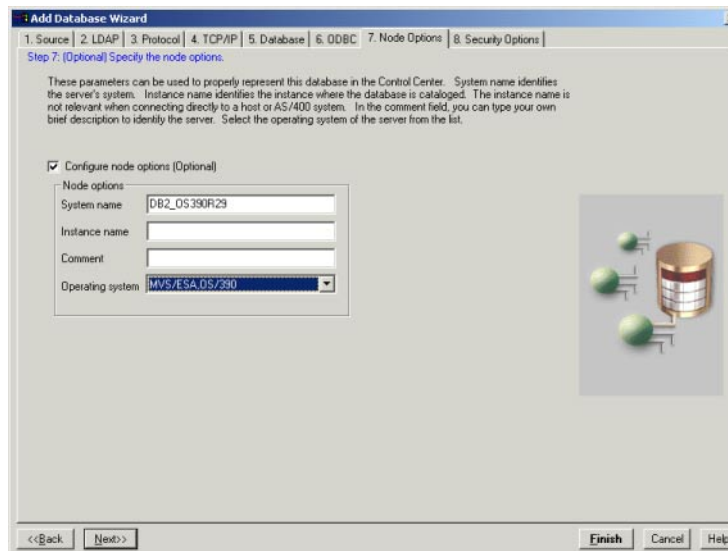
- 7 From the **Add Database Wizard** window's **ODBC** tab. Select **Register this database for ODBC** and click **As a system data source**. Click **Next**.

Figure 35 Add Database Wizard - ODBC



- 8 From the **Add Database Wizard** window's **Node Options** tab. Select **Configure node options (Optional)**. In the **Node options** dialog box, enter your system name and the operating system. Click **Next**.

Figure 36 Add Database Wizard - Node Options



- 9 From the **Add Database Wizard** window's **Security Options** tab. Select **Configure security option (Optional)**. Click **Host on AS/400 authentication (DCS)**. Click **Finish**.

Test the Connection

- 1 From the **Confirmation - S390LOC** window, click **Test Connection**. If a connection is not made, click **Change** to return to the wizard. If the connection was successful, click **Close**.

For Pre-Existing Connections

If you have pre-existing DB2 connections to an OS/390, you will need to reconfigure your connection paths to recognize this new configuration.

Implementation

This chapter discusses how to implement the Java-enabled DB2 Universal Database e*Way in a production environment. Also included is a sample configuration. This chapter assumes that the DB2 Universal Database e*Way has been successfully installed.

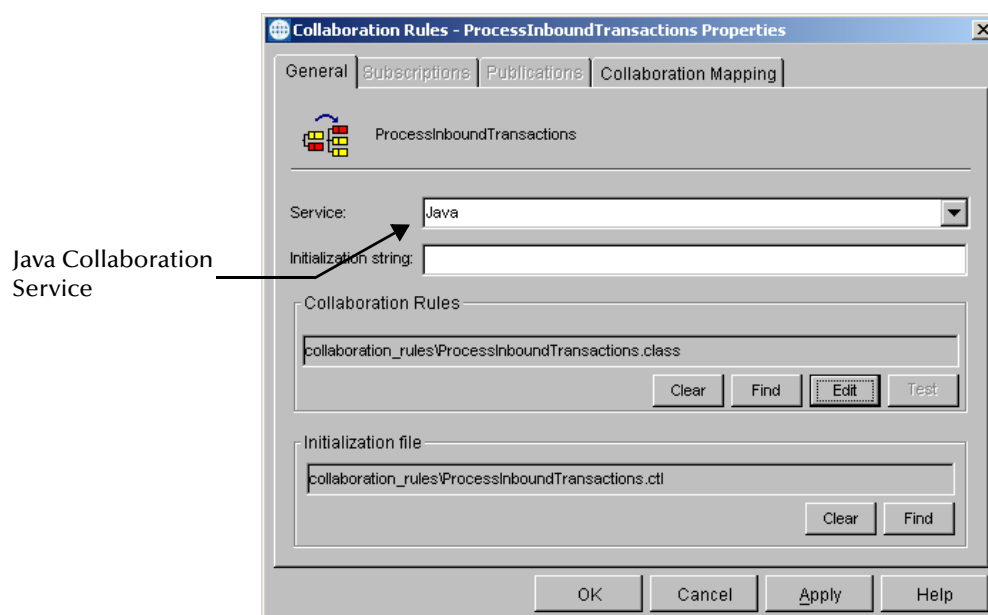
This Chapter Includes:

- “Implementing Java-enabled Components” on page 46
- “The Java ETD Builder” on page 47
- “Sample Scenario—Polling from a DB2 Database” on page 65

5.1 Implementing Java-enabled Components

An e*Way or a BOB can be Java-enabled by selecting the Java Collaboration Service in the Collaboration Rules Properties. Either of these components can use e*Way Connections to exchange data with external systems.

Figure 37 The Java Collaboration Service



5.1.1 The Java Collaboration Service

The Java Collaboration Service makes it possible to develop external Collaboration Rules that execute e*Gate business logic using Java code. Using the Java Collaboration Editor, you create Java classes that utilize the **executeBusinessRules()**, **userTerminate()**, and **userInitialize()** methods.

For more information on the Java Collaboration Service and sub collaborations, see the *e*Gate Integrator Collaboration Services Reference Guide*. For more information on the Java ETD Editor and the Java Collaboration Editor, see the *e*Gate Integrator User's Guide*.

5.1.2 Java-enabled Components

To make an e*Gate component Java-enabled, the component's Collaboration Rule must use the Java Collaboration Service. This requires all the intermediate components to also be configured correctly, since there is not a direct relationship between the e*Way or BOB and the Collaboration Service.

The e*Way or BOB requires one or more Collaborations. The Collaboration uses a Collaboration Rule. The Collaboration Rule uses a Collaboration Service. In order for the e*Way or BOB to be Java-enabled, the component's Collaboration Rule must use the Java Collaboration Service.

5.2 The Java ETD Builder

The Java ETD Builder is used to generate a Java-enabled ETD. The ETD Builder connects to the external database and generates the ETD corresponding to the external tables and procedures.

5.2.1 The Parts of the ETD

There are four possible parts to the Java-enabled Event Type Definition as shown in Figure 38.

Figure 38 The Java-enabled ETD



- **Element** – This is the highest level in the ETD tree. The element is the basic container that holds the other parts of the ETD. The element can contain fields and methods.
- **Field** – Fields are used to represent data. A field can contain data in any of the following formats: string, boolean, int, double, or float.

- **Method** – Method nodes represent actual Java methods.
- **Parameter** – Parameter nodes represent the Java method’s parameters.

5.2.2 Using the DBWizard ETD Builder

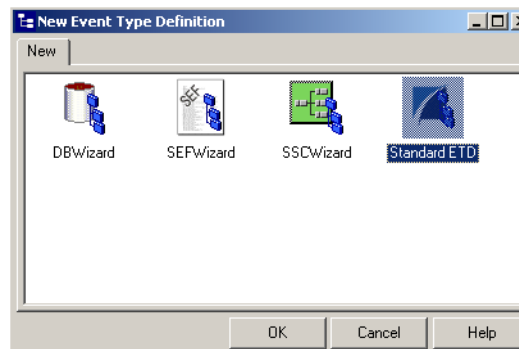
The DBWizard ETD Builder generates Java-enabled ETDs by connecting to external data sources and creating corresponding Event Type Definitions. The ETD Builder can create ETDs based on any combination of tables, stored procedures, or prepared SQL statements.

Field nodes are added to the ETD based on the tables in the external data source. Java method and parameter nodes are added to provide the appropriate JDBC functionality. For more information on the Java methods, refer to your JDBC developer’s reference.

To create a new ETD using the DBWizard

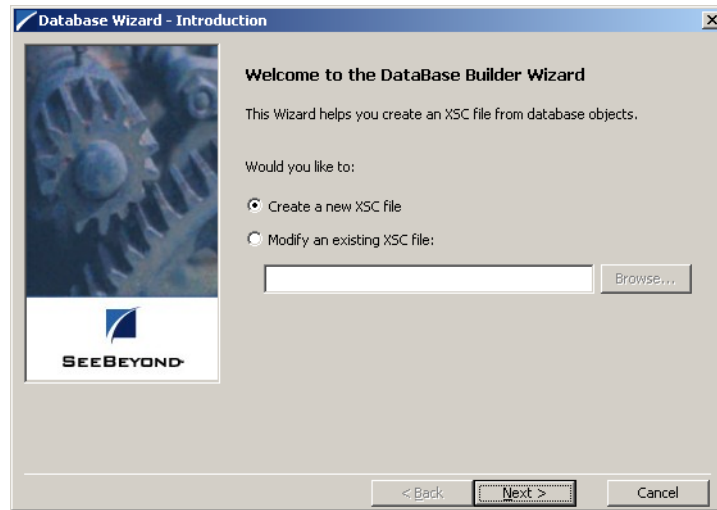
- 1 From the **Options** menu of the Enterprise Manager, choose **Default Editor....**
- 2 Verify that **Java** is selected, then click **OK**.
- 3 Click the **ETD Editor** button to launch the Java ETD Editor.
- 4 In the **Java ETD Editor**, click the **New** button to launch the New Event Type Definition Wizard.
- 5 In the **New Event Type Definition Wizard**, select the **DBWizard** and click **OK** to continue.

Figure 39 New Event Type Definition



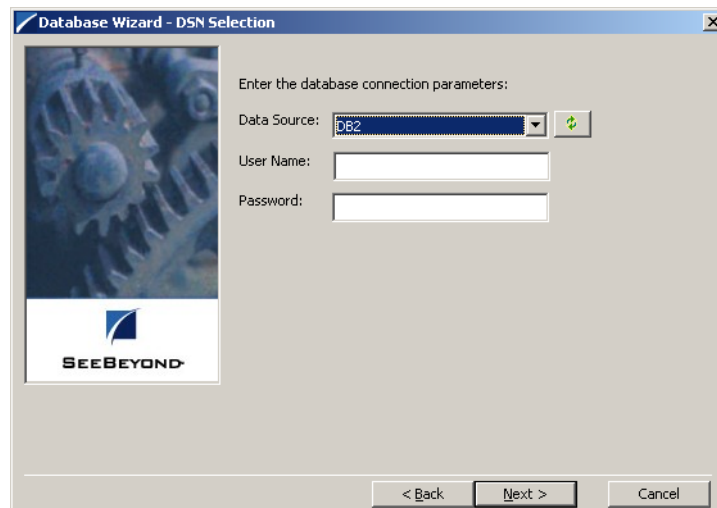
- 6 Enter the name of the new .xsc file you want to create or enter the name of the .xsc file you want to edit by browsing to its location.

Figure 40 Database Wizard - Introduction



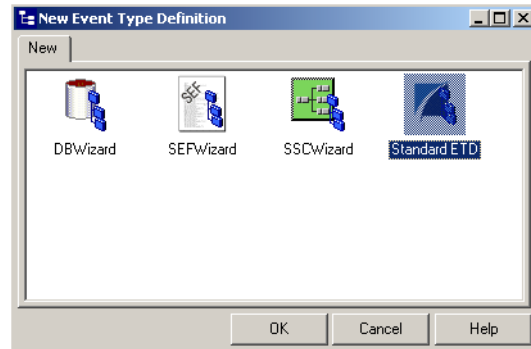
- 7 Select your **Data Source:** from the drop down list and enter your **User Name:** and **Password:**.

Figure 41 Database Wizard - DSN Selection



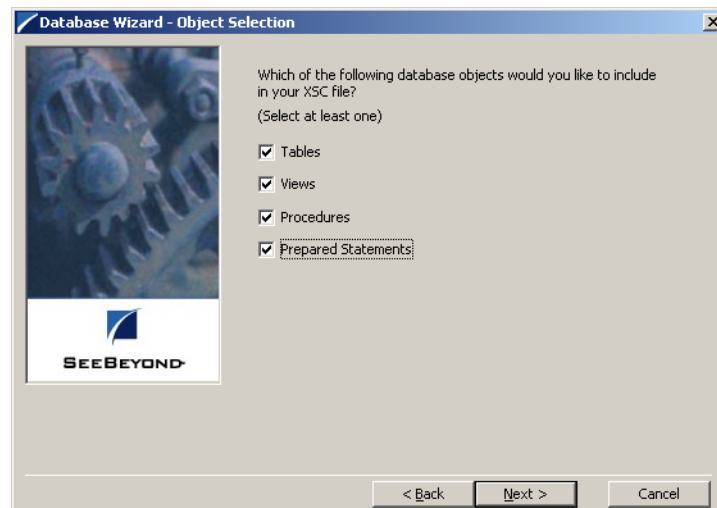
- 8 Select what type of database ETD you would like to generate. The data source you selected in the **Database Wizard - DSN Selection** window is the default. *Note: Do not change this unless instructed to do so by SeeBeyond personnel.*

Figure 42 Database Wizard - ETD Type Selection



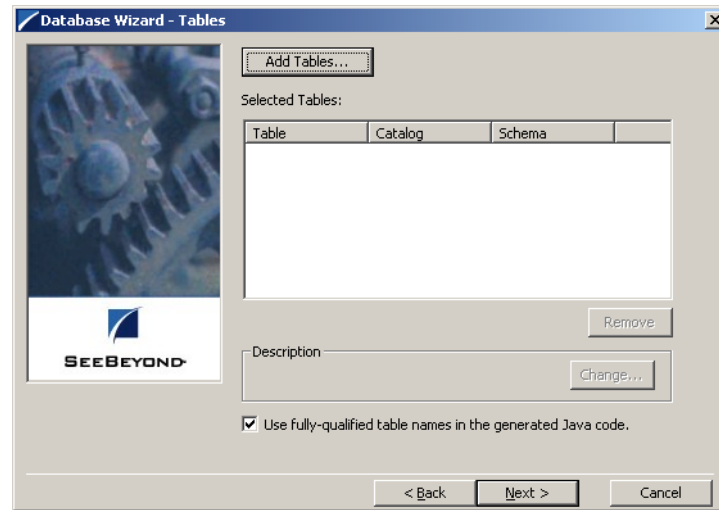
- 9 In the **Database Wizard - Object Selection** window, select any combination of **Tables, Views, Procedures, or Prepared Statements** you would like to include in your .xsc file. Click **Next** to continue.

Figure 43 Database Wizard - Object Selection



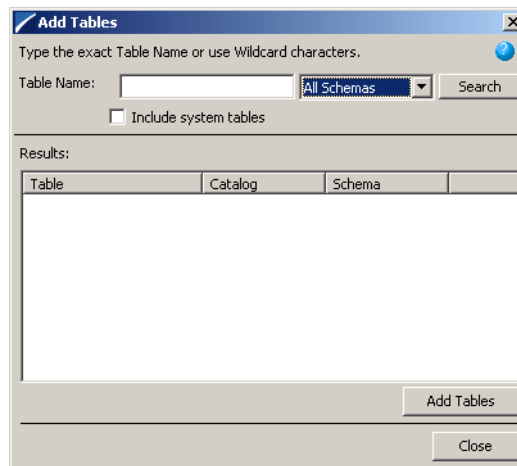
- 10 In the **Database Wizard - Tables** window, click **Add Tables**.

Figure 44 Database Wizard - Tables



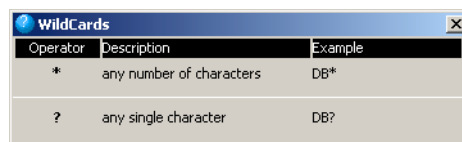
- 11 In the **Add Tables** window, type the exact name of the database table or use wildcard characters to return table names.

Figure 45 Add Tables



- 12 To see a list of valid wildcard characters, click the round ball with a question mark located in its center.

Figure 46 Wildcards

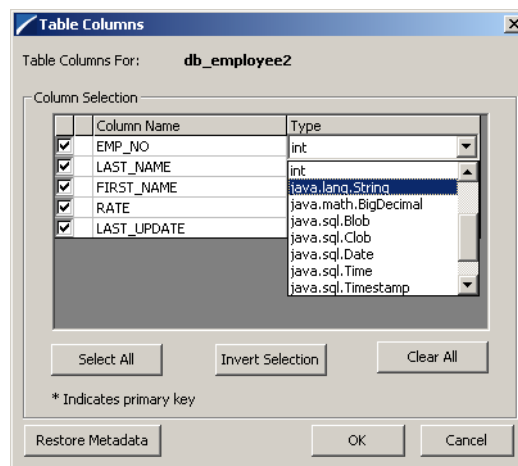


- 13 Select **Include System Tables** if you wish to include them and click **Search**. If your search was successful, you will see the results in the Results window. To select the name of the tables you wish to add to your .xsc, double click on the table name or

highlight the table names and click **Add Tables**. You may also use adjacent selections or nonadjacent selections to select multiple table names. When you have finished, click **Close**.

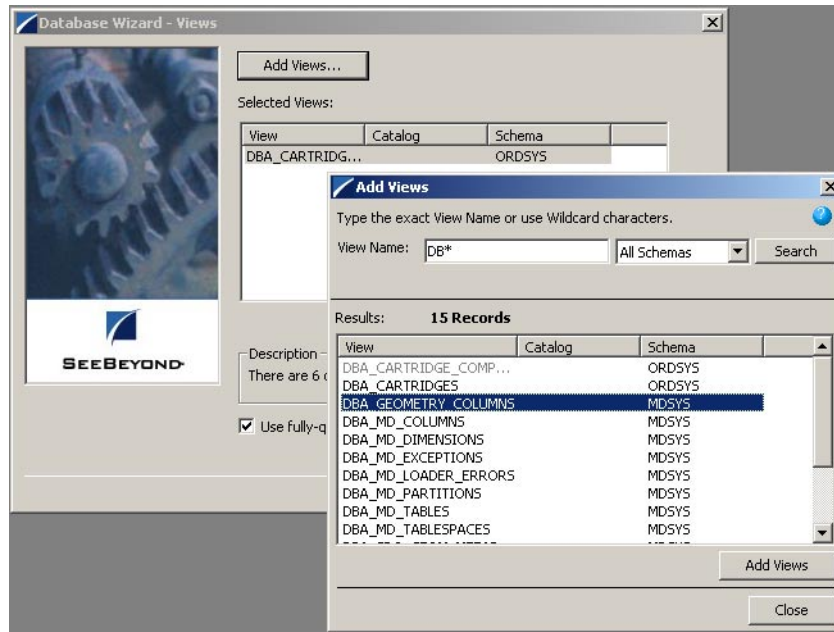
- 14 In the **Database Wizard - Tables** window, review the tables you have selected. If you would like to change any of the tables you have selected, click **Change**.
- 15 In the **Columns Selection** window, you can select or deselect your table choices. You can also change the data type for each table by highlighting the data type and selecting a different data type from the drop down list. Once you have completed your choices, click **OK**.

Figure 47 Columns Selection



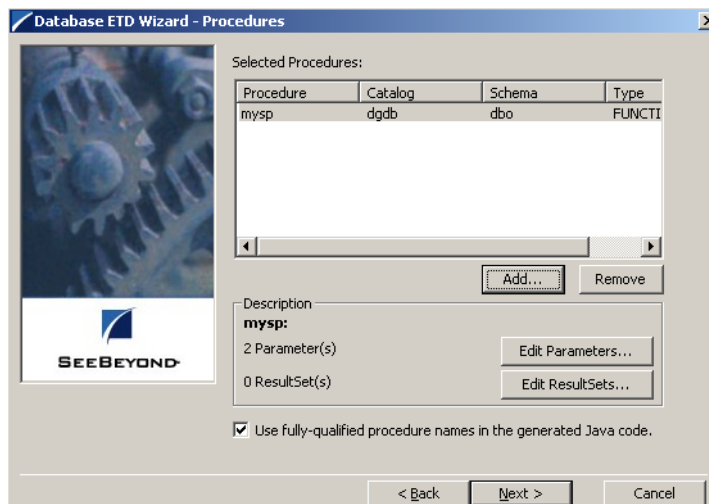
- 16 In the **Database Wizard - Tables** window, review the tables you have selected. If you do not want to use fully-qualified table names in the generated Java code, click to clear the check box and click **Next** to continue.
- 17 If you selected **Views** on the **Database Wizard - Object Selection** window, you are presented with the **Database Wizard - Views** window. Follow steps 9 - 15 to select and add views to your .xsc. Views are read-only.

Figure 48 Database Wizard - Views



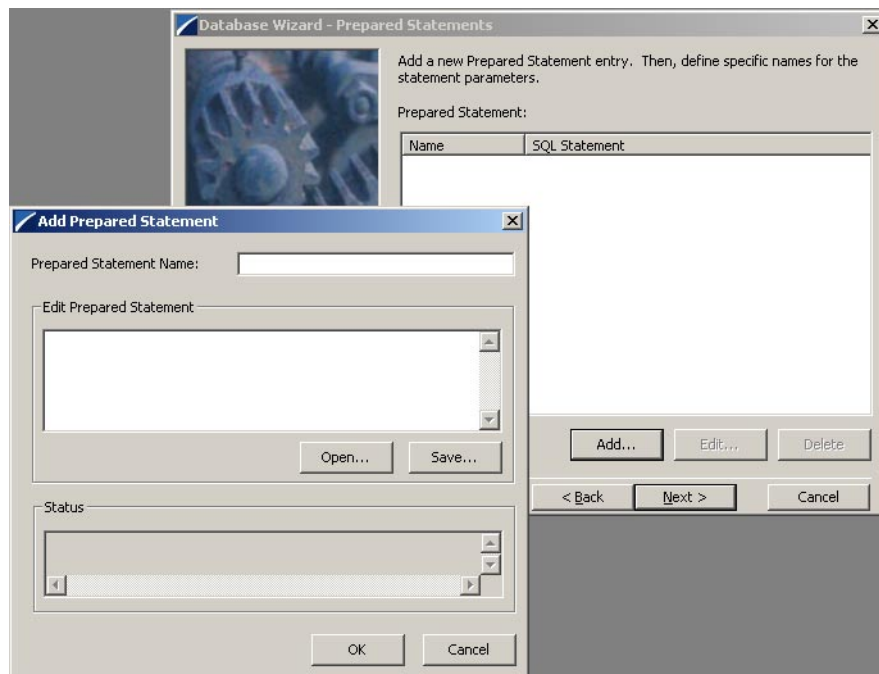
- 18 If you selected **Procedures** on the **Database Wizard - Object Selection** window, you are presented with the **Database Wizard - Procedures** window. Follow steps 9 - 15 to select and add **Procedures** to your .xsc. If you do not want to use fully-qualified procedure names in the generated Java code, click to clear the check box and click **Next** to continue.

Figure 49 Database Wizard - Procedures



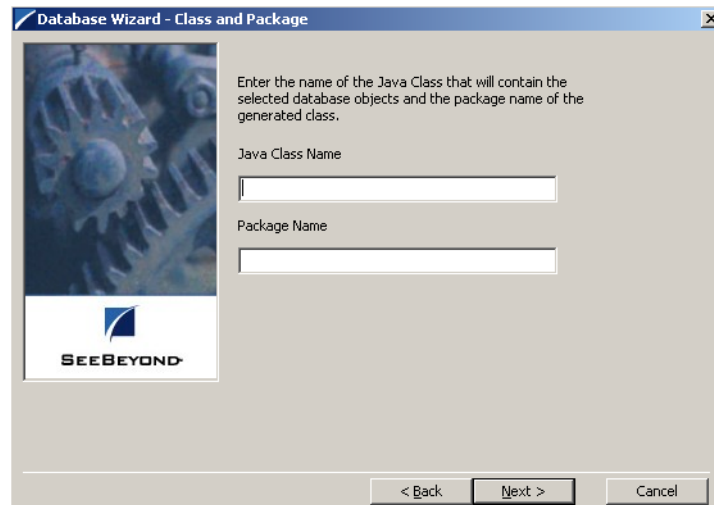
- 19 If you selected **Prepared Statements** on the **Database Wizard - Object Selection** window, you are presented with the **Database Wizard - Prepared Statement** window. To add **Prepared Statements** to your .xsc, complete the following steps:
 - A Click **Add** to add a new prepared statement
 - B Enter a prepared SQL statement.
 - C Enter the **Prepared Statement Name** to be used by the statement.
 - D Use the **Open...** or **Save...** buttons to open pre-existing statements or save the current one.
 - E Click **OK** to return to the **Database Wizard - Prepared Statements** window.
- 20 Repeat steps A–E to add additional prepared statements or click **Next** to continue.

Figure 50 Database Wizard - Prepared Statements



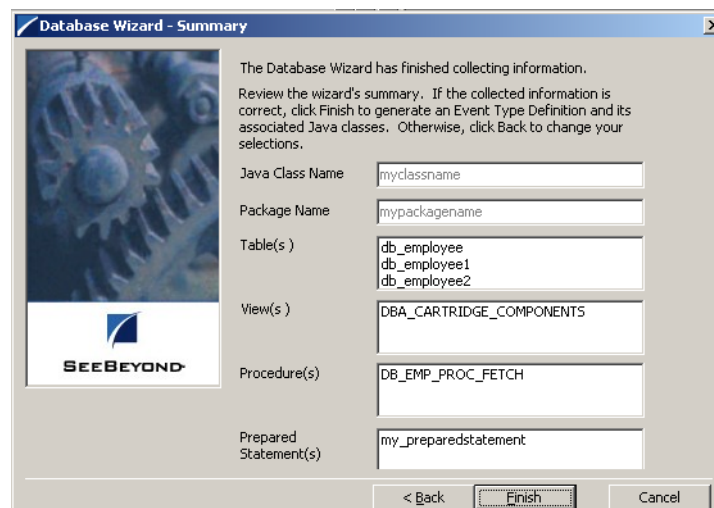
- 21 Enter the **Java Class Name** that will contain the selected tables and/or procedures and the **Package Name** of the generated classes.

Figure 51 Database Wizard - Class and Package



- 22 View the summary of the database wizard information and click **Finish** to begin generating the ETD.

Figure 52 Database Wizard - Summary



5.2.3 The Generated ETDs

The DataBase Wizard ETD builder can create three editable Event Type Definitions (ETDs) and one non-editable Event Type Definition (ETD). These types of ETDs can also be combined with each other. The four types of ETDs are:

- **The Table ETD** – The table ETD contains fields for each of the columns in the selected table as well as the methods required to exchange data with the external data source. To edit this type of ETD, you will need to open the .xsc in the DataBase Wizard.

- **The View ETD** - The view ETD contains selected columns from selected tables. View ETD's are read-only.
- **The Stored Procedure ETD** – The stored procedure ETD contains fields which correspond to the input and output fields in the procedure. To edit this type of ETD, you will need to open the .xsc in the DataBase Wizard
- **The Prepared Statement ETD** – The prepared statement ETD contains a result set for the prepared statement. To edit this type of ETD, you will need to open the .xsc in the DataBase Wizard

5.2.4 Editing an Existing .XSC Using the Database Wizard

If you choose to edit an existing .xsc that you have created using the Database Wizard, do the following:

- 1 From the **Options** menu of the Enterprise Manager, choose **Default Editor....**
- 2 Verify that **Java** is selected, then click **OK**.
- 3 From the **Tools** menu, click **ETD Editor...**
- 4 From the ETD Tool menu click **File** and click **New**.
- 5 From the **New Event Type Definition** window, select **DBWizard** and click **OK**.
- 6 On the Database Wizard - Introduction window, select **Modify an existing XSC file:** and browse to the appropriate .xbs file that you would like to edit.

You are now able to edit your .xsc file.

Note: *When you add a new element type to your existing .xsc, you must reselect any pre-existing elements or you will lose them when the new .xsc is created.*

If you attempt to edit an .xsc whose elements no longer exist in the database, you will see a warning and the element will be dropped from the ETD.

5.3 Using ETDs with Tables, Views, Stored Procedures, and Prepared Statements

The Insert, Delete, Update, and Execute Methods are common methods used within the Collaboration Editor. Though our sample schema doesn't include these methods, we thought it would be helpful to show them to you.

5.3.1 The Table

A table ETD represents a database table. It consists of fields and methods. Fields correspond to the columns of a table while methods are the operations that you can apply to the ETD. This allows you to perform select, update, insert and delete SQL operations in a table.

The select() Method

To perform a select operation on a table, add a new method in the Collaboration Editor by clicking on the **method** button. In the Method Properties box, define the method. Add a rule to the method by clicking on the **rule{}** button. The Rule Properties dialog box appears. Select the node and drag and drop it into the dialog box. This method takes an empty string or a WHERE clause. For example:

```
getDBEmp().getDB_EMPLOYEE().select("EMP_NO = 123");
```

The insert() Method

To perform an insert operation on a table, do the following:

- 1 From the Collaboration Editor, click the **method** button. Execute the select method with the right concurrency for example CONCUR_UPDATABLE and scroll sensitivity for example TYPE_SCROLL_INSENSITIVE, TYPE_SCROLL_SENSITIVE.
- 2 Move to the insert row by the moveToInsertRow method.
- 3 Set the fields of the table ETD
- 4 Insert the row by calling insertRow

This example inserts an employee record.

```
getDBEmp().getDB_EMPLOYEE(ResultSet.TYPE_SCROLL_SENSITIVE,  
ResultSet.CONCUR_UPDATABLE).select("");  
getDBEmp().getDB_EMPLOYEE().moveToInsertRow();  
getDBEmp().getDB_EMPLOYEE().setEMP_NO(123);  
. . .  
getDBEmp().getDB_EMPLOYEE().setRATE(123.45);  
getDBEmp().getDB_EMPLOYEE().insertRow();
```

Figure 53 Insert Method Business Rule

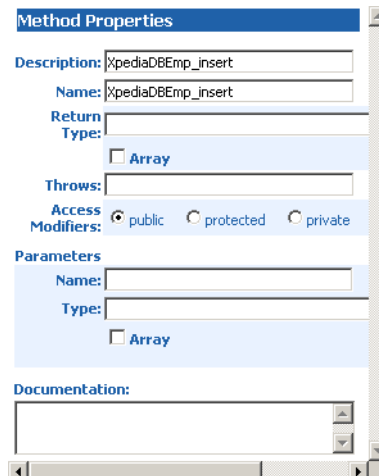
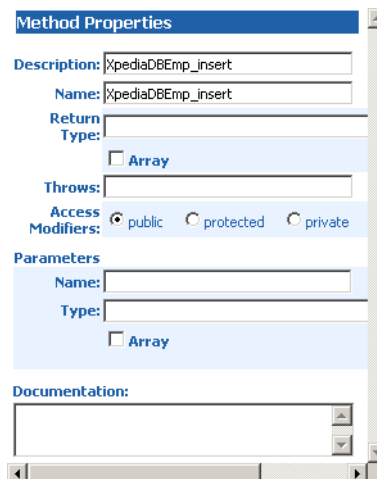


Figure 54 Insert Method Properties



The update() Method

To perform an update operation on a table, do the following:

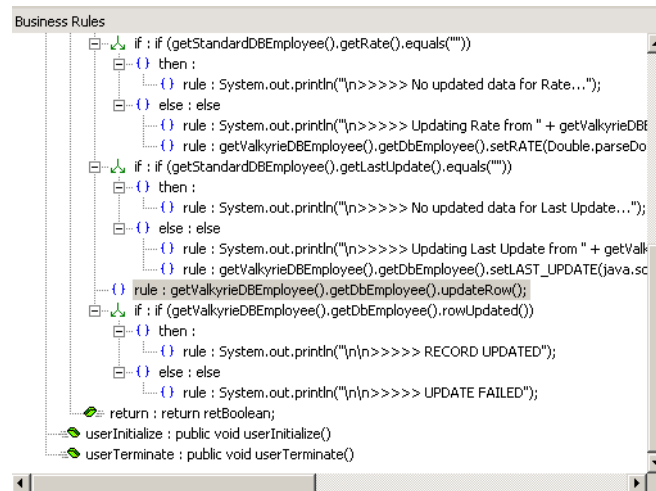
- 1 Execute the **select** method with the right concurrency for example CONCUR_UPDATEABLE and scroll sensitivity for example TYPE_SCROLL_INSENSITIVE, TYPE_SCROLL_SENSITIVE.
- 2 Move to the row that you want to update.
- 3 Set the fields of the table ETD
- 4 Insert the row by calling **insertRow**.

In this example, we move to the third record and update the EMP_NO and RATE fields.

```
getDBEmp().getDB_EMPLOYEE(ResultSet.TYPE_SCROLL_SENSITIVE,
ResultSet.CONCUR_UPDATABLE).select("");
getDBEmp().getDB_EMPLOYEE().absolute(3);
```

```
getDBEmp().getDB_EMPLOYEE().setEMP_NO(123);
getDBEmp().getDB_EMPLOYEE().setRATE(123.45);
getDBEmp().getDB_EMPLOYEE().updateRow();
```

Figure 55 Update() Method Business Rule



The delete() Method

To perform a delete operation on a table do the following:

- 1 Execute the **select** method with the right concurrency for example CONCUR_UPDATEABLE and scroll sensitivity for example TYPE_SCROLL_INSENSITIVE, TYPE_SCROLL_SENSITIVE.
- 2 Move to the row that you want to delete.
- 3 Set the fields of the table ETD
- 4 Insert the row by calling **insertRow**.

In this example DELETE the first record of the result set.

```
getDBEmp().getDB_EMPLOYEE(ResultSet.TYPE_SCROLL_SENSITIVE,
ResultSet.CONCUR_UPDATABLE).select(" ");
getDBEmp().getDB_EMPLOYEE().first();
getDBEmp().getDB_EMPLOYEE().deleteRow();
```

5.3.2 The View

Views are used to look at data from selected columns within selected tables. Views are read-only.

5.3.3 The Stored Procedure

A Stored Procedure ETD represents a database stored procedure. Fields correspond to the arguments of a stored procedure while methods are the operations that you can apply to the ETD. It allows you to execute a stored procedure. Remember that while in

the Collaboration Editor you can drag and drop nodes from the ETD's into the Collaboration Editor.

Collecting Data from Output Parameters

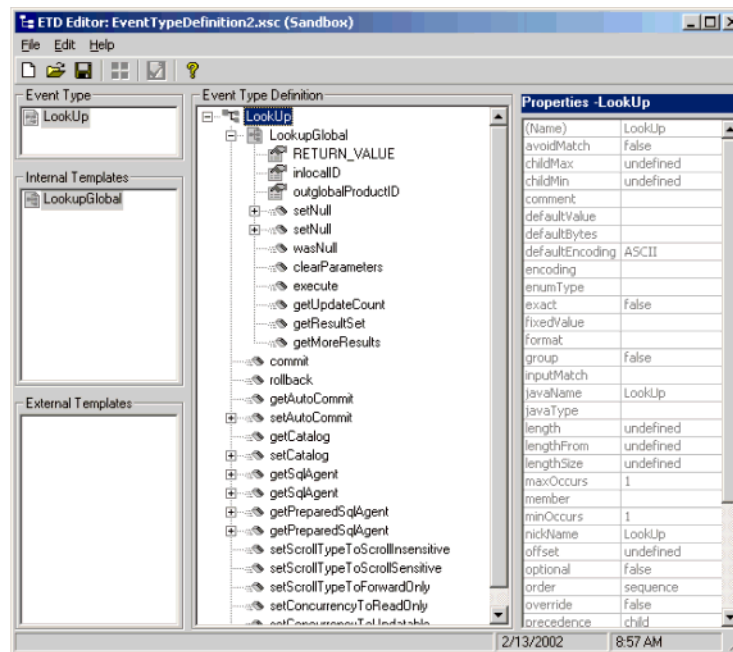
You can collect data within a Stored Procedure Result Set by using output parameters.

An example of how to execute a stored procedure using output parameters is:

```
create procedure LookupGlobal
( @inlocalID varchar, @outglobalProductID varchar output )
as
begin
select @outglobalProductID = globalProductID from SimpleLookup where
localID = @inlocalID
end
go
```

In the following image, the ETD represents the Stored Procedure “LookupGlobal” with two parameters, an inbound parameter (INLOCALID) and an outbound parameter (OUTGLOBALPRODUCTID). Representing these as nodes in an ETD allows you to drag values from other ETD's to the input parameters, execute the call, and collect the output parameter data by dragging from it's node to elsewhere.

Figure 56 Stored Procedure LookupGlobal



Returning Result Sets from Sybase, DB2, and SQL Server

The following Result Set processing returns rows into the body of the Stored Procedure. Databases that allow this operation are Sybase, DB2, and SQL Server.

A stored procedure in a database can perform update and select operations. The application checks what operation has been performed. The following methods allow you to collect this information:

getUpdateCount:

This method should be called only after a call to **executeRetVal** or **getMoreResults**, and should be called only once per result. An int greater than 0 represents the number of rows affected by an operation. A value of 0 means no rows were affected or the operation is a DDL command. -1 means the result is a result set or there are no more results.

getResultSet:

When the **executeRetVal** method has been used to execute the stored procedure. This method returns the current result set if there is one. Otherwise, it returns a null value which indicates the result is an update count or there are no more results.

getMoreResults:

Moves to the next result. This method returns true if it gets the next result set. It returns false if it is an update count or there are no more results.

This example prints out the update count and result sets that are returned from the stored procedures.

```
int iRow;
com.stc.eways.jdbcx.ResultSetAgent rs;
getpoller().getMrsSp().executeRetVal();

do
{
    iRow = getpoller().getMrsSp().getUpdateCount();
    System.out.println("\n*****iRow = " +
Integer.toString(iRow));

    if (iRow >= 0)
    {
        getblobout().setField1("Number of rows affected: " +
Integer.toString(iRow));
        getblobout().send();
    }
    else
    {
        rs = getpoller().getMrsSp().getResultSet();
        while (rs.next())
        {
            getblobout().setField1("Col5 = " +
Integer.toString(rs.getInt(1)) + ", Col6 = " +
Integer.toString(rs.getInt(2)) );
            getblobout().send();
        }
    }
}
while (getpoller().getMrsSp().getMoreResults());
```

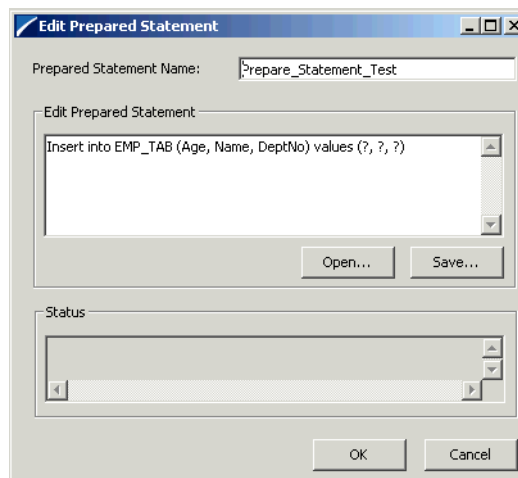
Use an outbound parameter to enrich another ETD.

5.3.4 Prepared Statement

To Create a prepared statement from the DataBase Wizard:

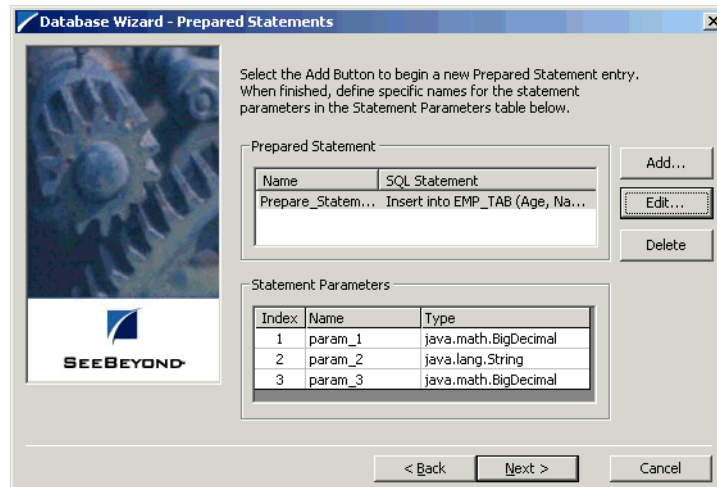
- 1 Select the **Prepared Statement** option in the DataBase Wizard and complete the following steps:
 - A Click **Add** to add a new prepared statement
 - B Enter a prepared SQL statement as shown. The question marks serve as place holders that are later defined as the parameters in [Figure 58 on page 63](#)

Figure 57 Add Prepared Statement



- C Enter the **Prepared Statement Name** to be used by the statement.
 - D Use the **Open...** or **Save...** buttons to open pre-existing statements or create and save the current one.
 - 2 [Figure 58 on page 63](#) shows the statement along with a table of the parameters. You can give each parameter an appropriate name and data type. These parameters become nodes in the prepared statement ETD and fields within the generated Java object.

Figure 58 Prepared Statement Summary and Parameter Modification



- 3 From the ETD Editor, save the Prepared Statement you just created.

Figure 59 TableJavaClass

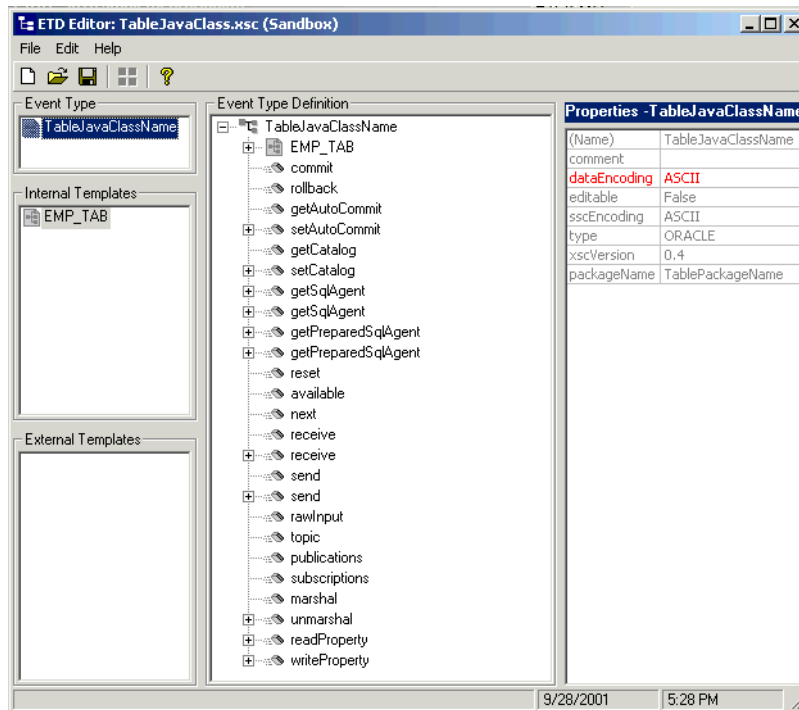
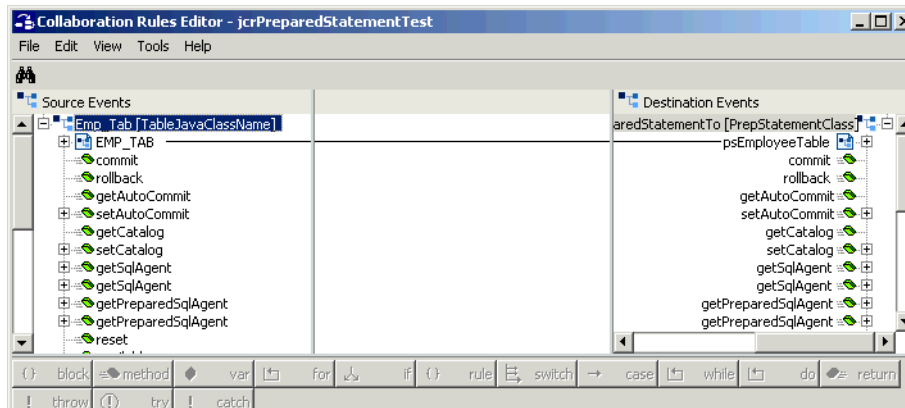
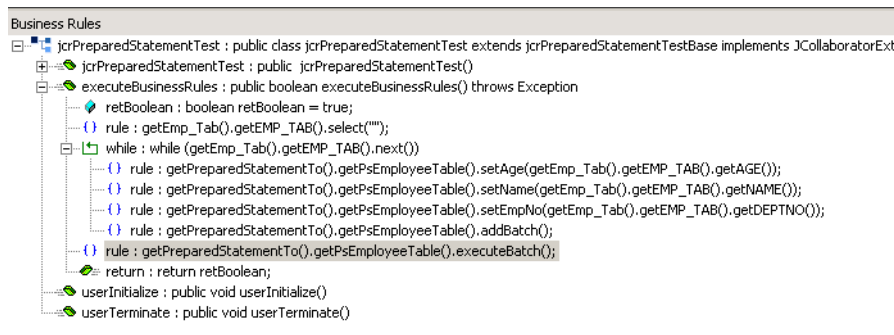


Figure 60 Collaboration Rule Editor

- 4 Map the fields you would like to populate the table with from the Source Events to the Destination Events.
- 5 Create your rules by dragging and dropping each node into the Rules window. This particular example shows the Age, Name and Department Number of three employees.

Figure 61 Collaboration Business Rules

- 6 Run the schema and verify the new content in Employee database.

5.3.5 Batch Operations

While the Java API used by SeeBeyond does not support traditional bulk insert or update operations, there is an equivalent feature that can achieve comparable results, with better performance. This is the “Add Batch” capability. The only modification required is to include the `addBatch()` method for each SQL operation and then the `executeBatch()` call to submit the batch to the database server.

```

getDBEmp().getDB_EMPLOYEE().select("");
while (getDBEmp().getDB_EMPLOYEE().next())
{

getPSDBEmp().getDbEmployeeUpdate().setEmployeeNo(getDBEmp().getDB_EMPLOYEE().getEMP_NO());
getPSDBEmp().getDbEmployeeUpdate().setNewTime(ts);
getPSDBEmp().getDbEmployeeUpdate().addBatch();
}

```



```
getPSDBEmp().getDbEmployeeUpdate().executeBatch();
```

5.3.6 Database Configuration Node

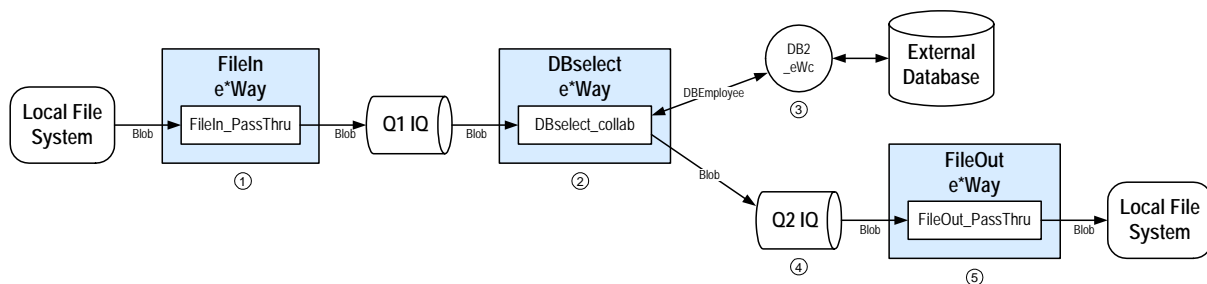
The Database Configuration node allows you to manage the “transaction mode” through the Collaboration if you have set the mode to manual in the e*Way connection configuration. See [“Connector Settings” on page 21](#).

5.4 Sample Scenario—Polling from a DB2 Database

This section describes how to use the Java-enabled DB2 Universal Database e*Way in a sample implementation. This sample schema demonstrates the polling of records from a DB2 database and converting the records into e*Gate Events.

Figure 62 shows a graphical overview of the sample schema.

Figure 62 The Database Select Scenario—Overview



- 1 The **FileIn** e*Way retrieves an Event (a text file) containing the database select criteria and publishes it to the **Q1 IQ**.
- 2 The **DBselect** e*Way retrieves the Generic Event (**Blob**) from the IQ. This triggers the rest of the Collaboration which has two parts.
- 3 The information in **Blob** is used to retrieve information from the database via the **DB2_eWc** e*Way Connection. This e*Way Connection contains information used by the Collaboration to connect to the DB2 database.
- 4 The information retrieved from the database is copied to the Generic Event (**Blob**) and published to the **Q2 IQ**.
- 5 The **FileOut** e*Way retrieves the Generic Event (**Blob**) from the **Q2 IQ** then writes it out to a text file on the local file system.

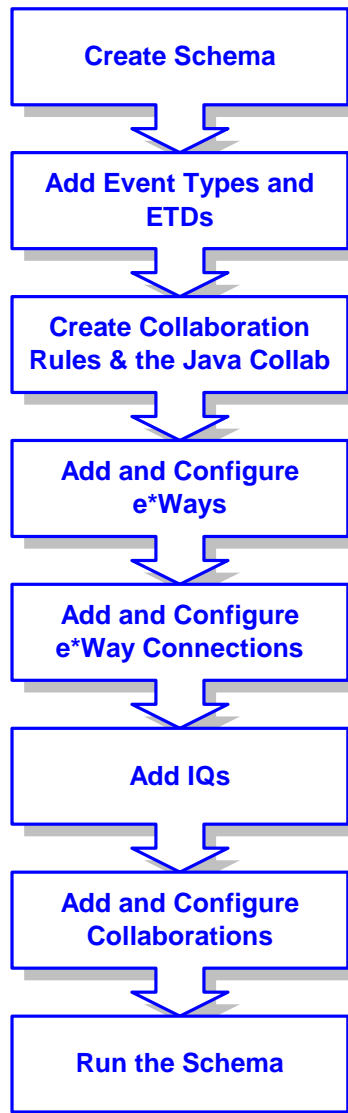
Overview of Steps

The sample implementation follows these general steps:

- [“Create the Schema” on page 67](#)
- [“Add the Event Types and Event Type Definitions” on page 67](#)
- [“Create the Collaboration Rules and the Java Collaboration” on page 70](#)

- “Add and Configure the e*Ways” on page 74
- “Add and Configure the e*Way Connections” on page 76
- “Add the IQs” on page 77
- “Add and Configure the Collaborations” on page 77
- “Run the Schema” on page 79

Figure 63 Schema Configuration Steps



External Database Tables

The sample uses a simple external DB2 database with a table called **DB_EMPLOYEE**. The table contains the following columns:

Table 2 The DB_EMPLOYEE Table

Column	Format	Description
EMP_NO	INTEGER	The employee number.
LAST_NAME	VARCHAR2	The employee's last name.
FIRST_NAME	VARCHAR2	The employee's first name.
RATE	FLOAT	The employee's pay rate.
LAST_DATE	DATETIME	The last transaction date for the employee.

5.4.1 Create the Schema

The first step in the sample implementation is creating a new schema. After installing the DB2 Universal Database e*Way, do the following:

- 1 Start the e*Gate Enterprise Manager GUI.
- 2 Log in to the appropriate Registry Host.
- 3 From the list of schemas, click **New** to create a new schema.
- 4 For this sample implementation, enter the name **DBSelect** and click **Open**.

The Enterprise Manager starts and the newly created schema appears.

5.4.2 Add the Event Types and Event Type Definitions

Two Event Types and Event Type Definitions are used in this sample.

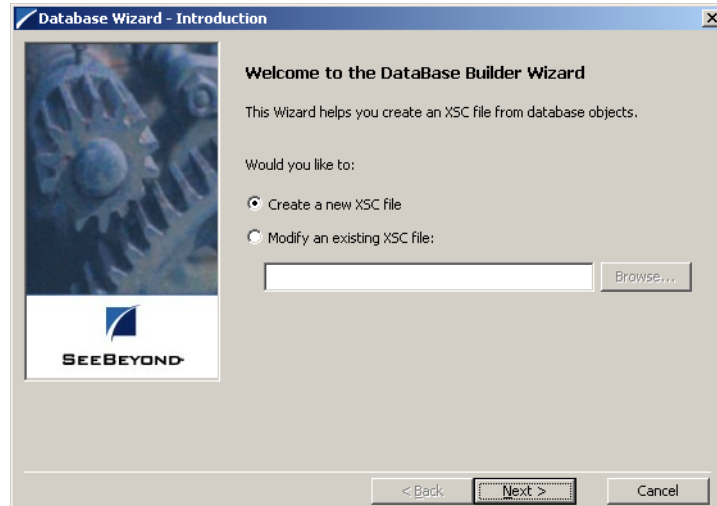
- **DBEmployee** – This Event Type represents the layout of the employee records in the **DB_Employee** table. The Event Type uses the **DBEmployee.xsc** Event Type Definition. The ETD will be generated by using the Java ETD Editor's Database Wizard (DBWizard).
- **GenericBlob** – This Event Type is used to pass records with no specific format (blob). The Event Type uses the **GenericBlob.xsc** ETD. The ETD will be manually created as a fixed-length ETD.

To create the DBEmployee Event Type and ETD

- 1 From the **Options** menu of the Enterprise Manager, choose **Default Editor...**
- 2 Verify that **Java** is selected, then click **OK**.
- 3 In the **Components** pane of the Enterprise Manager, select the **Event Types** folder.
- 4 Click the **New Event Type** button to add a new Event Type.
- 5 Enter the name **DBEmployee** and click **OK**.
- 6 Double-click the new **DBEmployee** Event Type to display its properties.
- 7 Select your **Data Source:** from the drop down list and enter your **User Name:** and **Password:**.
- 8 From the **File** menu, choose **New**. The New Event Type Definition dialog box will appear.

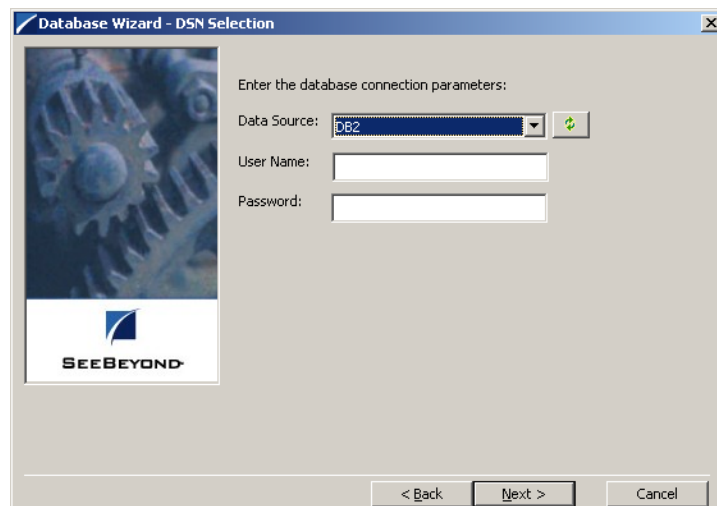
- 9 In the New Event Type Definition dialog box, select **DBWizard** and click **OK**.
- 10 Select Create a new .XSC file. Click **Next** to continue. See Figure 64.

Figure 64 Database Wizard Introduction



- 11 Enter the database DNS source and login information.
 - A Select the **Data Source** from the dropdown list of ODBC data sources.
 - B Enter the **User Name** and **Password** used to log into the database.Click **Next** to continue. See Figure 65

Figure 65 Database Wizard - DSN Selection



- 12 The **Database Wizard - ETD Type Selection** window appears. The DNS source you selected on the previous window is the default selection for this window. Do not change this selection type unless instructed to do so by SeeBeyond support personal. Click **Next** to continue.

- 13 This scenario uses a table rather than a procedure. Select **Table** and click **Next** to continue.
- 14 From the **Database Wizard - Tables** window, click **Add Tables...** Enter the exact **Table Name** or enter any valid wildcards. From the drop down list select the appropriate database schema and click **Search**. The wizard connects to the data source and display a list of tables.
- 15 Select the table to be included in the ETD and click **Next**.
- 16 The Java Class Name/ Package Name dialog box will appear. Enter the Group and Package information.
 - A Enter your database name as the **Java Class Name**.
 - B Enter **DBEmployee** for the Package Name and click **Next** to continue.
- 17 Click **Finish** to complete the Wizard. The Wizard will generate and display the ETD.
- 18 From the **File** menu, choose **Save**.
- 19 Name the ETD **DBEmployee.xsc** and click **OK**.
- 20 From the **File** menu, choose **Promote to Run Time** and click **OK** when finished.
- 21 From the **File** menu, choose **Close** to exit the ETD Editor.

To create the GenericBlob Event Type and ETD

- 1 In the **Components** pane of the Enterprise Manger, select the **Event Types** folder.
- 2 Click the **New Event Type** button to add a new Event Type.
- 3 Enter the name **GenericBlob** and click **OK**.
- 4 Double-click the new **GenericBlob** Event Type to display its properties.
- 5 Click the **New** button to create a new Event Type Definition. The Java Event Type Definition Editor appears.
- 6 From the **File** menu, choose **New**. The New Event Type Definition dialog box appears.
- 7 In the New Event Type Definition dialog box, select **Standard ETD** and click **OK**.
- 8 Read the Introduction screen, then click **Next** to continue. The Package Name dialog box appears.
- 9 Enter **GenericBlobPackage** for the **Package Name** and click **Next** to continue.
- 10 Read the summary information and click **Finish** to generate the ETD.
- 11 In the **Event Type Definition** pane, right-click the root node, point to **Add Field** in the shortcut menu, and click **As Child Node**.
- 12 Enter the properties for the two nodes as shown in Table 3.

Table 3 GenericBlob ETD Properties

Node	Property	Value
Root Node	Name	GenericBlob
	Structure	fixed
	Length	0
Child Node	Name	Data
	Structure	fixed
	Length	0

Note: To use a Blob, you will need to set the `LONGDATACOMPAT = 0` in the file `db2cli.ini` under the DB2 root directory. This will disable the `LongVarChar`, `LongVarBinary`, and `LongVarGraphic`. Refer to the *IBM Installation and Configuration Supplement* for more information.

- 13 From the **File** menu, choose **Save**.
- 14 Enter the name **GenericBlob.xsc** and click **OK**.
- 15 From the **File** menu, choose **Promote to Run Time** and click **OK** when finished.
- 16 From the **File** menu, choose **Close** to exit the ETD Editor.
- 17 In the Event Type properties dialog box, click **OK** to save and close the Event Type.

5.4.3 Create the Collaboration Rules and the Java Collaboration

The sample scenario uses two Collaboration Rules and one Java Collaboration:

- **GenericPassThru** – This Collaboration Rule is used to pass the GenericBlob Event Type through the schema without modifying the Event.
- **DBSelect** – This Collaboration Rule is used to convert the inbound Event’s selection criteria into a SQL statement, poll the external database, and return the matching records as an outbound Event.
- **DBSelectCollab** – This Java Collaboration contains the logic required to communicate with the external database.

To create the **GenericPassThru** Event Type

- 1 In the components pane of the Enterprise Manager, select the **Collaboration Rules** folder.
- 2 Click the **New Collaboration Rules** button to add a new Collaboration Rule.
- 3 Name the Collaboration Rule **GenericPassThru** and click **OK**.
- 4 Click the **Properties** button to display the Collaboration Rule’s properties.
- 5 Click the **Subscriptions** tab, select the **GenericBlob** Event Type, and click the right arrow.
- 6 Click the **Publications** tab, select the **GenericBlob** Event Type, and click the right arrow.

- 7 Click **OK** to save the Collaboration Rule.

To create the DBSelect Event Type

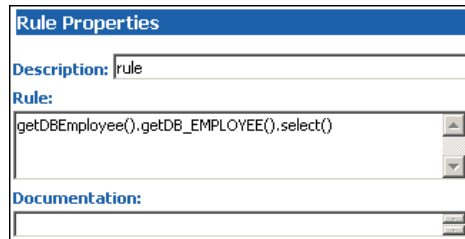
- 1 In the components pane of the Enterprise Manager, select the **Collaboration Rules** folder.
- 2 Click the **New Collaboration Rules** button to add a new Collaboration Rule.
- 3 Name the Collaboration Rule **DBSelect** and click **OK**.
- 4 Click the **Properties** button to display the Collaboration Rule’s properties.
- 5 In the **Service** list, click **Java**.
- 6 Click the **Collaboration Mapping** tab.
- 7 Add three instances as shown in Figure 66 below:

Figure 66 DBSelect Instances

Instance Name	ETD	Find ...	Mode	Trigger	Manual Publish
GenericBlobIn	GenericBlob.xsc	Find ...	In	<input checked="" type="checkbox"/>	<input type="checkbox"/>
GenericBlobOut	GenericBlob.xsc	Find ...	Out	<input type="checkbox"/>	<input checked="" type="checkbox"/>
DBEmployee	DBEmployee.xsc	Find ...	In/Out	<input type="checkbox"/>	<input type="checkbox"/>

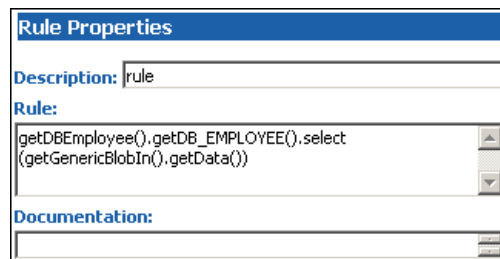
- 8 Click **Apply** to save the current changes.
- 9 Click the **General** tab.
- 10 Click **New** to create the new Collaboration file.
The Java Collaboration Editor appears. Note that Source and Destination Events are already supplied based on the Collaboration Rule’s Collaboration Mapping (see Figure 66).
- 11 From the **View** menu, choose **Display Code**.
This displays the Java code associated with each of the Collaboration’s rules.
- 12 In the Business Rules pane, select the **retBoolean** rule and click the **rule** button to add a new rule.
- 13 In the **Destination Events** pane, expand the **DBEmployee** Event Type until the **select** method is visible.
- 14 Drag the **select** method into the **Rule** field of the **Rule Properties** pane. Click **OK** to close the dialog box without entering any criteria. (See Figure 67).

Figure 67 Rule Properties



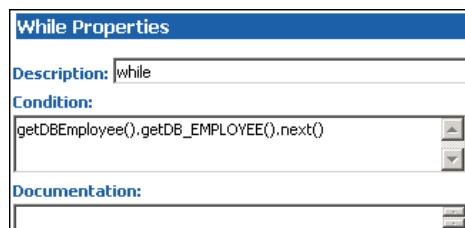
- 15 In the **Source Events** pane, expand the **GenericBlobIn** Event Type until the **Data** node is visible.
- 16 In the Rule Properties pane, position the cursor inside the parentheses of the select method. Then drag the Data node from the Source Events pane into the select method's parentheses. (See Figure 68).

Figure 68 Rule Properties (Continued)



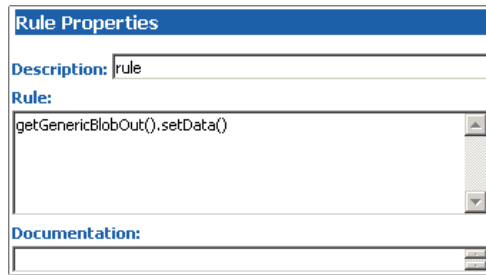
- 17 Select the newly edited rule in the **Business Rules** pane and click the **while** button to add a new while loop beneath the current rule.
- 18 Drag the next method from the Destination Events pane into the Condition field of the While Properties pane. (See Figure 69).

Figure 69 While Properties



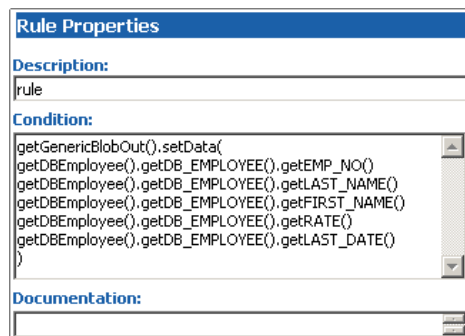
- 19 Select the newly edited while loop in the Business Rules pane and click the **rule** button to add a new rule as a **child** to the while loop.
- 20 In the **Destination Events** pane, expand the **GenericBlobOut** Event Type until the **Data** node is visible.
- 21 Drag the Data node into the Rule field of the Rule Properties pane. (See Figure 70).

Figure 70 Rule Properties



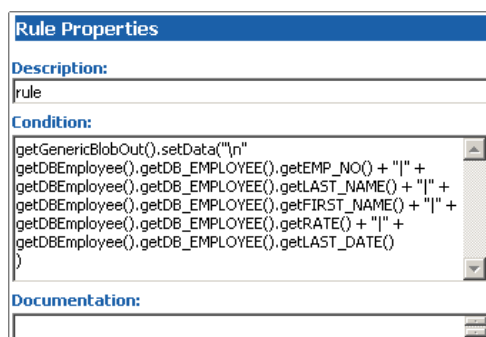
- 22 In the Rule Properties pane, position the cursor inside the parentheses of the setData() method. Then drag each of the five data nodes of DB_EMPLOYEE from the Source Events into the parentheses of the rule. (See Figure 71).

Figure 71 Rule Properties (Continued)

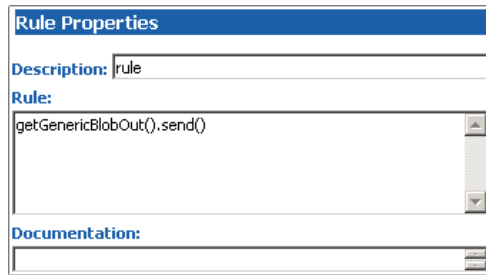


- 23 Edit the text of the condition to add a newline character and pipe (|) delimiters between each of the five data nodes. (See Figure 72).

Figure 72 Rule Properties (Continued)



- 24 Select the newly edited rule in the **Business Rules** pane and click the **rule** button to add a new rule inside the while loop.
- 25 Drag the root node of the **GenericBlobOut** Event into the rule field in the **Rule Properties** pane.
- 26 Edit the rule; add a **send()** method as shown in Figure 73.

Figure 73 GenericBlobOut send()

- 27 From the **File** menu, choose **Save** to save the file.
- 28 From the **File** menu, choose **Compile** to compile the Collaboration.
View the **Output** pane to ensure that there were no compiler errors.
- 29 From the **File** menu, choose **Close** to close the Java Collaboration Editor and return to the Collaboration Rule.
Note that the **Collaboration Rules** and **Initialization file** fields have been completed by close the Java Collaboration Editor.
- 30 Click **OK** to save and close the **DBSelect** Collaboration Rule.

5.4.4 Add and Configure the e*Ways

The sample scenario uses three e*Ways:

- **FileIn** – This e*Way retrieves an Event (text file) containing the database select criteria and publishes it to the **Q1 IQ**.
- **DBSelect** – This e*Way retrieves the Generic Event (**Blob**) from the **Q1 IQ**. This triggers the e*Way to request information from the external database (via the e*Way Connection) and publishes the results to the **Q2 IQ**.
- **FileOut** – This e*Way retrieves the Generic Event (**Blob**) from the **Q2 IQ** then writes it out to a text file on the local file system.

To create the FileIn e*Way

- 1 In the Components pane of the Enterprise Manager, select the Control Broker and click the **New e*Way** button.
- 2 Enter **FileIn** for the component name and click **OK**.
- 3 Select the newly created e*Way and click the **Properties** button to display the e*Way's properties.
- 4 Use the **Find** button to select **stcewfile.exe** as the executable file.
- 5 **Click New** to create a new configuration file.
- 6 Enter the parameters for the e*Way as shown in Table 4.

Table 4 FileIn e*Way Parameters

Section Name	Parameter	Value
General Settings	AllowIncoming	YES
	AllowOutgoing	NO
	PerformanceTesting	default
Outbound (send) settings	All	default
Poller (inbound) settings	PollDirectory	c:\egate\data\dbSelect_In
	All Others	default
Performance Testing	All	default

- 7 Select **Save** from the **File** menu. Enter **FileIn** as the file name and click **Save**.
- 8 Select **Promote to Run Time** from the **File** menu. Click **OK** to close the e*Way configuration file editor.
- 9 In the **Start Up** tab of the e*Way properties, select the **Start automatically** check box.
- 10 Click **OK** to save the e*Way properties.

To create the DBSelect e*Way

- 1 In the Components pane of the Enterprise Manager, select the Control Broker and click the **New e*Way** button.
- 2 Enter **DBSelect** for the component name and click **OK**.
- 3 Select the newly created e*Way and click the **Properties** button to display the e*Way's properties.
- 4 Use the **Find** button to select **stceway.exe** as the executable file.
- 5 Click **New** to create a new configuration file.
- 6 Enter the parameters for the e*Way as shown in Table 5.

Table 5 DBSelect e*Way Parameters

Section Name	Parameter	Value
JVM Settings	CLASS Prepend	Specify the path to the db2java.zip file.
	All others	default

- 7 Select **Save** from the **File** menu. Enter **DBSelect** as the file name and click **Save**.
- 8 Select **Promote to Run Time** from the **File** menu. Click **OK** to close the configuration file editor.
- 9 In the **Start Up** tab of the Business Object Broker properties, select the **Start automatically** check box.
- 10 Click **OK** to save the e*Way's properties.

To create the FileOut e*Way

- 1 In the Components pane of the Enterprise Manager, select the Control Broker and click the **New e*Way** button.
- 2 Enter **FileOut** for the component name and click **OK**.
- 3 Select the newly created e*Way and click the **Properties** button to display the e*Way's properties.
- 4 Use the **Find** button to select **stcewfile.exe** as the executable file.
- 5 Click **New** to create a new configuration file.
- 6 Enter the parameters for the e*Way as shown in Table 6.

Table 6 FileOut e*Way Parameters

Section Name	Parameter	Value
General Settings	AllowIncoming	NO
	AllowOutgoing	YES
	PerformanceTesting	default
Outbound (send) settings	OutputDirectory	c:\egate\data\dbSelect_Out
	OutputFileName	dbSelect%d.dat
Poller (inbound) settings	All	default
Performance Testing	All	default

- 7 Select **Save** from the **File** menu. Enter **FileOut** as the file name and click **Save**.
- 8 Select **Promote to Run Time** from the **File** menu. Click **OK** to close the e*Way configuration file editor.
- 9 In the **Start Up** tab of the e*Way properties, select the **Start automatically** check box.
- 10 Click **OK** to save the e*Way properties.

5.4.5 Add and Configure the e*Way Connections

The sample scenario uses one e*Way Connection:

- **DB2_eWc** – This e*Way Connection connects the **DBSelect** component to the external database and returns the requested records to be published to the Q2 IQ.

To create the e*Way Connection

- 1 In the Components pane of the Enterprise Manager, select the e*Way Connections folder.
- 2 Click the **New e*Way Connection** button to add a new e*Way Connection.
- 3 Enter **DB2_eWc** for the component name and click **OK**.
- 4 Select the newly created e*Way Connection and click the **Properties** button to display the e*Way Connection's properties.
- 5 Select **DB2** from the e*Way Connection Type dropdown list.

- 6 Click **New** to create a new configuration file.
- 7 Enter the parameters for the e*Way Connection as shown in Table 7.

Table 7 DB2_eWc e*Way Connection Parameters

Section Name	Parameter	Value
DataSource	class	default
	DatabaseName	Use the database name listed in your ODBC entry.
	user name	Use local settings.
	password	Use local settings.
	retry interval	default
connector	All	default

- 8 Select **Save** from the **File** menu. Enter **DB2_eWc** as the file name and click **Save**.
- 9 Select **Promote to Run Time** from the **File** menu. Click **OK** to close the e*Way Connection configuration file editor.
- 10 Click **OK** to save the e*Way Connection's properties.

5.4.6 Add the IQs

The sample scenario uses two IQs:

- **Q1** – This IQ queues the inbound Events for the DBSelect e*Way.
- **Q2** – This IQ queues the outbound Events for the FileOut e*Way.

To add the IQs

- 1 In the components pane of the Enterprise Manager, select the IQ Manager.
- 2 Click the **New IQ** button to add a new IQ.
- 3 Enter the name **Q1** and click **Apply** to save the IQ and leave the New IQ dialog box open.
- 4 Enter the name **Q2** and click **OK** to save the second IQ.
- 5 Select the IQ Manager and click the **Properties** button.
- 6 Select the **Start automatically** check box and click **OK** to save the properties.

5.4.7 Add and Configure the Collaborations

The sample scenario uses three Collaborations:

- **FileIn_PassThru** – This Collaboration uses the **GenericPassThru** Collaboration Rule.
- **DBSelect_collab** – This Collaboration uses the **GenericEventToDatabase** Collaboration Rule to execute the **dbCollab.class** Java Collaboration file.

- **FileOut_PassThru** – This Collaboration uses the **GenericPassThru** Collaboration Rule.

To add the **FileIn_PassThru** Collaboration

- 1 In the components pane of the Enterprise Manager, select the **FileIn** e*Way.
- 2 Click the **New Collaboration** button to create a new Collaboration.
- 3 Enter the name **FileIn_PassThru** and click **OK**.
- 4 Select the newly created Collaboration and click the **Properties** button.
- 5 Select **GenericPassThru** from the dropdown list of Collaboration Rules.
- 6 Click the upper **Add** button to add a new Subscription.
- 7 Select the **GenericEvent** Event Type and the **<External>** source.
- 8 Click the lower **Add** button to add a new Publication.
- 9 Select the **GenericEvent** Event Type and the **Q1** destination.
- 10 Click **OK** to close the Collaboration's properties.

To add the **DBselect_collab** Collaboration

- 1 In the components pane of the Enterprise Manager, select the **DBSelect** e*Way.
- 2 Click the **New Collaboration** button to create a new Collaboration.
- 3 Enter the name **DBselect_collab** and click **OK**.
- 4 Select the newly created Collaboration and click the **Properties** button.
- 5 Select **GenericEventToDatabase** from the dropdown list of Collaboration Rules.
- 6 Click the upper **Add** button to add a new Subscription.
- 7 Select the **GenericEvent** Event Type and the **FileIn_PassThru** source.
- 8 Click the lower **Add** button to add a new Publication.
- 9 Select the **DBEmployee** Event Type and the **DB2_eWc** destination.
- 10 Click the lower **Add** button to add a new Publication.
- 11 Select the **GenericEvent** Event Type and the **Q2** destination.
- 12 Click **OK** to close the Collaboration's properties.

To add the **FileOut_PassThru** Collaboration

- 1 In the components pane of the Enterprise Manager, select the **FileOut** e*Way.
- 2 Click the **New Collaboration** button to create a new Collaboration.
- 3 Enter the name **FileOut_PassThru** and click **OK**.
- 4 Select the newly created Collaboration and click the **Properties** button.
- 5 Select **GenericPassThru** from the dropdown list of Collaboration Rules.
- 6 Click the upper **Add** button to add a new Subscription.
- 7 Select the **GenericEvent** Event Type and the **DBSelect_collab** source.

- 8 Click the lower **Add** button to add a new Publication.
- 9 Select the **GenericEvent** Event Type and the **<External>** destination.
- 10 Click **OK** to close the Collaboration's properties.

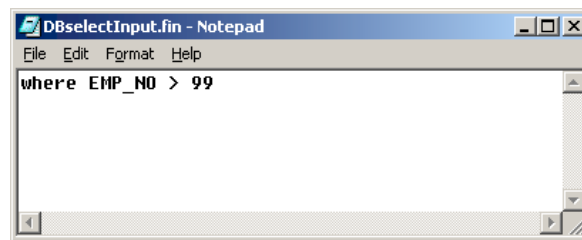
5.4.8 Run the Schema

Running the sample Schema requires that a sample input file be created. Once the input file has been created, you can start the Control Broker from a command prompt to execute the Schema. After the Schema has been run, you can view the output text file to verify the results.

The sample input file

Use a text editor to create an input file to be read by the inbound file e*Way (**FileIn**). This simple input file contains the criteria for the **dbSelect.class** Collaboration's select statement. An example of an input file is shown in Figure 74.

Figure 74 Sample Input File



To start the Control Broker

From a command prompt, type the following command:

```
stccb -ln logical_name -rh registry -rs DBSelect -un user_name  
-up password
```

where

logical_name is the logical name of the Control Broker,

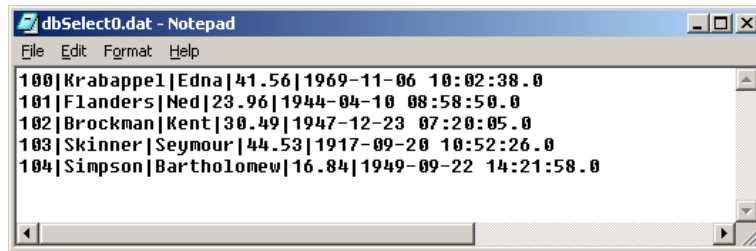
registry is the name of the Registry Host, and

user_name and *password* are a valid e*Gate username/password combination.

To verify the results

Use a text editor to view the output file `c:\eGate\data\dbSelect_out\dbSelect0.dat`. Figure 75 shows an example of the records that were returned by the sample schema.

Figure 75 Sample Output File



```
dbSelect0.dat - Notepad
File Edit Format Help
100|Krabappel|Edna|41.56|1969-11-06 10:02:38.0
101|Flanders|Ned|23.96|1944-04-10 08:58:50.0
102|Brockman|Kent|30.49|1947-12-23 07:20:05.0
103|Skinner|Seymour|44.53|1917-09-20 10:52:26.0
104|Simpson|Bartholomew|16.84|1949-09-22 14:21:58.0
```

5.4.9 Importing the OS/390 Sample Schema

To import the OS/390 sample schema included on the e*Gate Installation CD-ROM, do the following:

- 1 On the **Enterprise Manager** toolbar, click **File, Import Definitions from File...**
- 2 Review the information provided in the **Import Wizard - Introduction** window. Click **Next**.
- 3 On the **Import Wizard - Step 1** window, select **Schema** and click **Next**.
- 4 On the **Import Wizard - Step 2** window, browse to the **ewdb2** sample folder.
- 5 Double click the **ewdb2** sample folder and select the **db2sample_OS390.zip** file.
- 6 Click **Open**.
- 7 On the **Import Wizard - Step 2** window, click **Next**.
- 8 On the **Import Wizard - Step 3** window, you can rename the host or change the port. This step is optional.
- 9 Click **Next**.
- 10 On the **Import Wizard - Finish** window, click **Finish**.
- 11 Follow the instructions provided for the Polling Sample Schema to run your schema.

DB2 e*Way Methods

The DB2 e*Way contains Java methods that are used to extend the functionality of the e*Way. These methods are contained in the following classes:

- [com.stc.eways.jdbcx.StatementAgent Class](#) on page 81
- [com.stc.eways.jdbcx.PreparedStatementAgent Class](#) on page 91
- [com.stc.eways.jdbcx.PreparedStatementResultSet Class](#) on page 103
- [com.stc.eways.jdbcx.SqlStatementAgent Class](#) on page 129
- [com.stc.eways.jdbcx.CallableStatementAgent Class](#) on page 131
- [com.stc.eways.jdbcx.TableResultSet Class](#) on page 143

6.1 com.stc.eways.jdbcx.StatementAgent Class

```

java.lang.Object
|
+ - - com.stc.eways.jdbcx.StatementAgent

```

All Implemented Interfaces

ResetEventListener, SessionEventListener

Direct Known Subclasses

PreparedStatementAgent, SQLStatementAgent, TableResultSet

```

public abstract class StatementAgent
extends java.lang.Object

```

Implements SessionEventListener, ResetEventListener

Abstract class for other Statement Agent.

Methods of the StatementAgent

- [cancel](#) on page 89
- [clearWarnings](#) on page 90
- [getFetchDirection](#) on page 86
- [getMaxFieldSize](#) on page 88
- [getMoreResults](#) on page 89
- [getResultSetConcurrency](#) on page 85
- [getUpdateCount](#) on page 88
- [isClosed](#) on page 83
- [queryName](#) on page 83
- [resultSetConcurToString](#) on page 83
- [resultSetTypeToString](#) on page 82
- [sessionOpen](#) on page 84
- [setEscapeProcessing](#) on page 85
- [setMaxFieldSize](#) on page 88
- [setQueryTimeout](#) on page 86
- [stmtInvoke](#) on page 90
- [clearBatch](#) on page 89
- [executeBatch](#) on page 89
- [getFetchSize](#) on page 87
- [getMaxRows](#) on page 87
- [getResultSet](#) on page 88
- [getResultSetType](#) on page 84
- [getWarnings](#) on page 90
- [queryDescription](#) on page 83
- [resetRequested](#) on page 84
- [resultSetDirToString](#) on page 82
- [sessionClosed](#) on page 84
- [setCursorName](#) on page 85
- [setFetchDirection](#) on page 86
- [setMaxRows](#) on page 87
- [setQueryTimeout](#) on page 86

resultSetTypeToString

This method gets the symbol string corresponding to the ResultSet enumeration.

```
public static java.lang.String resultSetTypeToString(int type)
```

Name	Description
type	ResultSet type.

Returns

Enumeration symbol string.

resultSetDirToString

This method gets the symbol string corresponding to the ResultSet direction enumeration.

```
public static java.lang.String resultSetDirToString(int dir)
```

Name	Description
dir	ResultSet scroll directions.

Returns

Enumeration symbol string.

resultSetConcurToString

This method gets the symbol string corresponding to the ResultSet concurrency enumeration.

```
public static java.lang.String resultSetConcurToString(int concur)
```

Name	Description
concur	ResultSet concurrency.

Returns

Enumeration symbol string.

isClosed

This method returns the statement agent's close status.

```
public boolean isClosed()
```

Returns

True if the statement agent is closed.

queryName

This method supplies the name of the listener.

```
public java.lang.String queryName()
```

Specified By

queryName in interface SessionEventListener.

Returns

The listener's class name.

queryDescription

This method gives a description of the query.

```
public java.lang.String queryDescription()
```

Returns

The description of the query.

sessionOpen

Opens the session event handler.

```
public void sessionOpen(SessionEvent evt)
```

Specified by

sessionOpen in interface SessionEventListener

Name	Description
evt	Session event.

sessionClosed

Closes the session event handler.

```
public void sessionClosed(SessionEvent evt)
```

Specified by

sessionClosed in interface SessionEventListener

Name	Description
evt	Session event.

resetRequested

Resets the event handler.

```
public void resetRequested(ResetEvent evt)
```

Specified by

resetRequested in interface ResetEventListener

Name	Description
evt	Requested Reset event.

Throws

java.sql.SQLException

getResultSetType

Returns the result set scroll type.

```
public int getResultSetType()
```

Returns

ResultSet type

Throws

java.sql.SQLException

getResultSetConcurrency

Returns the result set concurrency mode.

```
public int getResultSetConcurrency()
```

Returns

ResultSet concurrency

Throws

java.sql.SQLException

setEscapeProcessing

Sets escape syntax processing

```
public void setEscapeProcessing (boolean bEscape)
```

Name	Description
bEscape	True to enable False to disable

Throws

java.sql.SQLException

setCursorName

Sets result set cursor name.

```
public void setCursorName(java.lang.String sName)
```

Name	Description
sName	Cursor name.

Throws

java.sql.SQLException

setQueryTimeout

Returns query timeout duration.

```
public int getQueryTimeout()
```

Returns

The number of seconds to wait before timeout.

Throws

java.sql.SQLException

setQueryTimeout

Sets the query timeout duration

```
public void setQueryTimeout(int nInterval)
```

Name	Description
nInterval	The number of seconds before timeout.

Throws

java.sql.SQLException

getFetchDirection

Returns result set fetch direction.

```
public int getFetchDirection()
```

Returns

The fetch direction of the ResultSet: FETCH_FORWARD, FETCH_REVERSE, FETCH_UNKNOWN.

Throws

java.sql.SQLException

setFetchDirection

Sets result set fetch direction.

```
public void setFetchDirection (int iDir)
```

Name	Description
iDir	The fetch direction of the ResultSet: FETCH_FORWARD, FETCH_REVERSE, FETCH_UNKNOWN.

Throws

java.sql.SQLException

getFetchSize

Returns the result set prefetch record count.

```
public int getFetchSize()
```

Returns

The fetch size this StatementAgent object set.

Throws

java.sql.SQLException

getMaxRows

Returns the maximum number of fetch records.

```
public int getMaxRows()
```

Returns

The maximum number of rows that a ResultSetAgent may contain.

Throws

java.sql.SQLException

setMaxRows

Sets the maximum number of fetch records.

```
public void setMaxRows (int nRow)
```

Name	Description
nRow	The maximum number of rows in the ResultSetAgent.

Throws

java.sql.SQLException

getMaxFieldSize

Returns the maximum field data size.

```
public int getMaxFieldSize()
```

Returns

The maximum number of bytes that a ResultSetAgent column may contain; 0 means no limit.

Throws

java.sql.SQLException

setMaxFieldSize

Sets the maximum field data size.

```
public void setMaxFieldSize (int nSize)
```

Name	Description
nSize	The maximum size for a column in a ResultSetAgent.

Throws

java.sql.SQLException

getUpdateCount

Returns the records count of the last executed statement.

```
public int getUpdateCount()
```

Returns

The number of rows affected by an updated operation. 0 if no rows were affected or the operation was a DDL command. -1 if the result is a ResultSetAgent or there are no more results.

Throws

java.sql.SQLException

getResultSet

Returns the result set of the last executed statement.

```
public ResultSetAgent getResultSet()
```

Returns

The ResultSetAgent that was produced by the call to the method execute.

Throws

java.sql.SQLException

getMoreResults

Returns if there are more result sets.

```
public boolean getMoreResults()
```

Returns

True if the next result is a ResultSetAgent; False if it is an integer indicating an update count or there are no more results).

Throws

java.sql.SQLException

clearBatch

Clears the batch operation.

```
public void clearBatch()
```

Throws

java.sql.SQLException

executeBatch

Executes batch statements.

```
public int[] executeBatch ()
```

Returns

An array containing update counts that correspond to the commands that executed successfully. An update count of -2 means the command was successful but that the number of rows affected is unknown.

Throws

java.sql.SQLException

cancel

Cancels a statement that is being executed.

```
public void cancel()
```

Throws

java.sql.SQLException

getWarnings

Returns SQL warning object.

```
public java.sql.SQLWarning getWarnings()
```

Returns

The first SQL warning or null if there are no warnings.

Throws

java.sql.SQLException

clearWarnings

Clear all SQL Warning objects.

```
public void clearWarnings()
```

Throws

java.sql.SQLException

stmtInvoke

Invokes a method of the database Statement object of this ETD.

```
public java.lang.Object stmtInvoke (java.lang.String methodName,  
java.lang.Class[] argsCls, java.lang.Object[] args)
```

Name	Description
methodName	The name of the method.
argsCls	Class array for types of formal arguments for method, in the declared order. Can be null if there are no formal arguments. However, cannot invoke constructor here.
args	Object array of formal arguments for method in the declared order. Can be null if there are no formal arguments. However, cannot invoke constructor here.

Returns

The Object instance resulting from the method invocation. Can be null if nothing is returned (void return declaration).

Throws

java.lang.Exception. Whatever exception the invoked method throws.

6.2 com.stc.eways.jdbcx.PreparedStatementAgent Class

```
java.lang.Object
|
+ --com.stc.eways.jdbcx.StatementAgent
|
+ -- com.stc.eways.jdbcx.PreparedStatementAgent
```

All Implemented Interfaces

ResetEventListener, SessionEventListener

Direct Known Subclasses

CallableStatementAgent

```
public class PreparedStatementAgent
extends StatementAgent
```

Agent hosts PreparedStatement Object

Methods of the PreparedStatementAgent

[addBatch](#) on page 102

[execute](#) on page 102

[executeUpdate](#) on page 102

[setArray](#) on page 100

[setBigDecimal](#) on page 96

[setBlob](#) on page 101

[setByte](#) on page 94

[setCharacterStream](#) on page 100

[setDate](#) on page 96

[setDouble](#) on page 96

[setInt](#) on page 95

[setNull](#) on page 92

[setObject](#) on page 93

[setRef](#) on page 101

[setString](#) on page 98

[setTime](#) on page 97

[setTimestamp](#) on page 98

[clearParameters](#) on page 102

[executeQuery](#) on page 102

[sessionOpen](#) on page 133

[setAsciiStream](#) on page 99

[setBinaryStream](#) on page 99

[setBoolean](#) on page 94

[setBytes](#) on page 99

[setClob](#) on page 101

[setDate](#) on page 97

[setFloat](#) on page 95

[setLong](#) on page 95

[setObject](#) on page 92

[setObject](#) on page 93

[setShort](#) on page 94

[setTime](#) on page 97

[setTimestamp](#) on page 98

sessionOpen

Opens the session event handler.

```
public void sessionOpen(SessionEvent evt)
```

Overrides

sessionOpen in class StatementAgent

Name	Description
evt	Session event.

setNull

Nullify value of indexed parameter.

```
public void setNull(int index, int type)
```

Name	Description
index	Parameter index starting from 1.
type	A JDBC type defined by <code>inava.sql.Types</code>

Throws

`java.sql.SQLException`

setNull

Nullify value of indexed parameter.

```
public void setNull(int index, int type, java.lang.String tname)
```

Name	Description
index	Parameter index starting from 1.
type	A JDBC type defined by <code>inava.sql.Types</code>
tname	The fully-qualified name of the parameter being set. If type is not REF, STRUCT, DISTINCT, or JAVA_OBJECT, this parameter will be ignored.

Throws

`java.sql.SQLException`

setObject

Sets value of indexed parameter with an object.

```
public void setObject(int index, java.lang.Object ob)
```

Name	Description
index	Parameter index starting from 1.
ob	An instance of a Java Object containing the input parameter value.

Throws

java.sql.SQLException

setObject

Sets value of indexed parameter with an object.

```
public void setObject(int index, java.lang.Object ob, int iType)
```

Name	Description
index	Parameter index starting from 1.
ob	An instance of a Java Object containing the input parameter value.
iType	A JDBC type defined by inava.sql.Types

Throws

java.sql.SQLException

setObject

Sets value of indexed parameter with an object.

```
public void setObject(int index, java.lang.Object ob, int iType, int iScale)
```

Name	Description
index	Parameter index starting from 1.
ob	An instance of a Java Object containing the input parameter value.
iType	A JDBC type defined by inava.sql.Types
iScale	The number of digits to the right of the decimal point. Only applied to DECIMAL and NUMERIC types

Throws

java.sql.SQLException

setBoolean

Sets the boolean value of the indexed parameter.

```
public void setBoolean(int index, boolean b)
```

Name	Description
index	Parameter index starting from 1.
b	true or false.

Throws

java.sql.SQLException

setByte

Sets the byte value of the indexed parameter.

```
public void setByte(int index, byte byt)
```

Name	Description
index	Parameter index starting from 1.
byt	The byte parameter value to be set.

Throws

java.sql.SQLException

setShort

Sets the short value of the indexed parameter.

```
public void setShort(int index, short si)
```

Name	Description
index	Parameter index starting from 1.
si	The short parameter value to be set.

Throws

java.sql.SQLException

setInt

Sets the integer value of the indexed parameter.

```
public void setInt(int index, int i)
```

Name	Description
index	Parameter index starting from 1.
i	The integer parameter value to be set.

Throws

java.sql.SQLException

setLong

Sets the long value of the indexed parameter.

```
public void setLong(int index, long l)
```

Name	Description
index	Parameter index starting from 1.
l	The long parameter value to be set.

Throws

java.sql.SQLException

setFloat

Sets the float value of the indexed parameter.

```
public void setFloat(int index, float f)
```

Name	Description
index	Parameter index starting from 1.
f	The float parameter value to be set.

Throws

java.sql.SQLException

setDouble

Sets the double value of the indexed parameter.

```
public void setDouble(int index, double d)
```

Name	Description
index	Parameter index starting from 1.
d	The double parameter value to be set.

Throws

java.sql.SQLException

setBigDecimal

Sets the decimal value of the indexed parameter.

```
public void setBigDecimal(int index, java.math.BigDecimal dec)
```

Name	Description
index	Parameter index starting from 1.
dec	The BigDecimal parameter value to be set.

Throws

java.sql.SQLException

setDate

Sets the date value of the indexed parameter.

```
public void setDate(int index, java.sql.Date date)
```

Name	Description
index	Parameter index starting from 1.
date	The Date parameter value to be set.

Throws

java.sql.SQLException

setDate

Sets the date value of indexed parameter with time zone from calendar.

```
public void setDate(int index, java.sql.Date date, java.util.Calendar cal)
```

Name	Description
index	Parameter index starting from 1.
date	The Date parameter value to be set.
cal	The calendar object used to construct the date.

Throws

java.sql.SQLException

setTime

Sets the time value of the indexed parameter.

```
public void setTime(int index, java.sql.Time t)
```

Name	Description
index	Parameter index starting from 1.
t	The Time parameter value to be set.

Throws

java.sql.SQLException

setTime

Sets the time value of the indexed parameter.

```
public void setTime(int index, java.sql.Time t, java.util.Calendar cal)
```

Name	Description
index	Parameter index starting from 1.
t	The Time parameter value to be set.
cal	The Calendar object used to construct the time.

Throws

java.sql.SQLException

setTimestamp

Sets the timestamp value of the indexed parameter.

```
public void setTimestamp(int index, java.sql.Timestamp ts)
```

Name	Description
index	Parameter index starting from 1.
ts	The Timestamp parameter value to be set.

Throws

java.sql.SQLException

setTimestamp

Sets the timestamp value of the indexed parameter with the time zone from the calendar.

```
public void setTimestamp(int index, java.sql.timestamp ts,  
java.util.Calendar cal)
```

Name	Description
index	Parameter index starting from 1.
ts	The Timestamp parameter value to be set.
cal	The Calendar object used to construct the timestamp.

Throws

java.sql.SQLException

setString

Sets the string value of the indexed parameter.

```
public void setString(int index, java.lang.String s)
```

Name	Description
index	Parameter index starting from 1.

Name	Description
s	The String parameter value to be set.

Throws

java.sql.SQLException

setBytes

Sets the byte array value of the indexed parameter.

```
public void setBytes(int index, byte[] bytes)
```

Name	Description
index	Parameter index starting from 1.
bytes	The byte array parameter value to be set.

Throws

java.sql.SQLException

setAsciiStream

Sets the character value of the indexed parameter with an input stream and specified length.

```
public void setAsciiStream(int index, java.io.InputStream is, int length)
```

Name	Description
index	Parameter index starting from 1.
is	The InputStream that contains the Ascii parameter value to be set.
length	The number of bytes to be read from the stream and sent to the database.

Throws

java.sql.SQLException

setBinaryStream

Sets the binary value of the indexed parameter with an input stream and specified length.

```
public void setBinaryStream(int index, java.io.InputStream is, int length)
```

Name	Description
index	Parameter index starting from 1.
is	The InputStream that contains the binary parameter value to be set.
length	The number of bytes to be read from the stream and sent to the database.

Throws

java.sql.SQLException

setCharacterStream

Sets the character value of the indexed parameter with a reader stream and specified length.

```
public void setCharacterStream(int index, java.io.Reader rd, int length)
```

Name	Description
index	Parameter index starting from 1.
rd	The Reader that contains the Unicode parameter value to be set.
length	The number of characters to be read from the stream and sent to the database.

Throws

java.sql.SQLException

setArray

Sets the Array value of the indexed parameter.

```
public void setArray(int index, java.sql.Array a)
```

Name	Description
index	Parameter index starting from 1.
a	The Array value to be set.

Throws

java.sql.SQLException

setBlob

Sets the Blob value of the indexed parameter.

```
public void setBlob(int index, java.sql.Blob blob)
```

Name	Description
index	Parameter index starting from 1.
blob	The Blob value to be set.

Throws

java.sql.SQLException

setClob

Sets the Clob value of the indexed parameter.

```
public void setClob(int index, java.sql.Clob clob)
```

Name	Description
index	Parameter index starting from 1.
clob	The Clob value to be set.

Throws

java.sql.SQLException

setRef

Sets the Ref value of the indexed parameter.

```
public void setRef(int index, java.sql.Ref ref)
```

Name	Description
index	Parameter index starting from 1.
ref	The Ref parameter value to be set.

Throws

java.sql.SQLException

clearParameters

Clears the parameters of all values.

```
public void clearParameters()
```

Throws

java.sql.SQLException

addBatch

Adds a set of parameters to the list of commands to be sent as a batch.

```
public void addBatch()
```

Throws

java.sql.SQLException

execute

Executes the Prepared SQL statement.

```
public void execute()
```

Throws

java.sql.SQLException

executeQuery

Executes the prepared SQL query and returns a `ResultSetAgent` that contains the generated result set.

```
public ResultSetAgent executeQuery()
```

Returns

`ResultSetAgent` or null.

Throws

java.sql.SQLException

executeUpdate

Executes the prepared SQL statement and returns the number of rows that were affected.

```
public int executeUpdate()
```

Returns

The number of rows affected by the update operation; 0 if no rows were affected.

Throws

java.sql.SQLException

6.3 com.stc.eways.jdbcx.PreparedStatementResultSet Class

java.lang.Object

|

+ -- **com.stc.eways.jdbcx.PreparedStatementResultSet**

```
public abstract class PreparedStatementResultSet
extends java.lang.Object
```

Base class for Result Set returned from a Prepared Statement execution.

Constructors of PreparedStatementResultSet

PreparedStatementResultSet

Methods of PreparedStatementResultSet

[absolute](#) on page 107

[beforeFirst](#) on page 109

[close](#) on page 107

[findColumn](#) on page 110

[getArray](#) on page 124

[getAsciiStream](#) on page 123

[getBigDecimal](#) on page 116

[getBinaryStream](#) on page 123

[getBlob](#) on page 125

[getBoolean](#) on page 112

[getByte](#) on page 113

[getBytes](#) on page 122

[getCharacterStream](#) on page 124

[getClob](#) on page 125

[getConcurrency](#) on page 105

[getDate](#) on page 117

[getDate](#) on page 118

[getDouble](#) on page 116

[getFetchDirection](#) on page 105

[getFloat](#) on page 115

[getInt](#) on page 114

[getLong](#) on page 114

[getMetaData](#) on page 105

[getObject](#) on page 111

[getObject](#) on page 112

[getRef](#) on page 127

[getShort](#) on page 113

[getString](#) on page 121

[getTime](#) on page 118

[getTime](#) on page 119

[getTimestamp](#) on page 120

[getTimestamp](#) on page 120

[getType](#) on page 110

[insertRow](#) on page 128

[isBeforeFirst](#) on page 109

[afterLast](#) on page 109

[clearWarnings](#) on page 127

[deleteRow](#) on page 128

[first](#) on page 108

[getArray](#) on page 124

[getAsciiStream](#) on page 123

[getBigDecimal](#) on page 117

[getBinaryStream](#) on page 124

[getBlob](#) on page 125

[getBoolean](#) on page 112

[getByte](#) on page 113

[getBytes](#) on page 122

[getCharacterStream](#) on page 124

[getClob](#) on page 126

[getCursorName](#) on page 107

[getDate](#) on page 117

[getDate](#) on page 118

[getDouble](#) on page 116

[getFetchSize](#) on page 106

[getFloat](#) on page 116

[getInt](#) on page 114

[getLong](#) on page 115

[getObject](#) on page 110

[getObject](#) on page 111

[getRef](#) on page 126

[getRow](#) on page 128

[getShort](#) on page 113

[getString](#) on page 121

[getTime](#) on page 118

[getTime](#) on page 119

[getTimestamp](#) on page 120

[getTimestamp](#) on page 121

[getWarnings](#) on page 127

[isAfterLast](#) on page 110

[isFirst](#) on page 108

[isLast](#) on page 109

[next](#) on page 107

[refreshRow](#) on page 149

[getFetchDirection](#) on page 105

[updateRow](#) on page 128

[last](#) on page 108

[previous](#) on page 107

[relative](#) on page 108

[getFetchSize](#) on page 106

[wasNull](#) on page 127

Constructor PreparedStatementResultSet

Constructs a Prepared Statement Result Set object.

```
public PreparedStatementResultSet(ResultSetAgent rsAgent)
```

Name	Description
rsAgent	The ResultSetAgent underlying control.

getMetaData

Retrieves a ResultSetMetaData object that contains ResultSet properties.

```
public java.sql.ResultSetMetaData getMetaData()
```

Returns

ResultSetMetaData object

Throws

java.sql.SQLException

getConcurrency

Gets the concurrency mode for this ResultSet object.

```
public int getConcurrency()
```

Returns

Concurrency mode

Throws

java.sql.SQLException

getFetchDirection

Gets the direction suggested to the driver as the row fetch direction.

```
public int getFetchDirection()
```

Returns

Row fetch direction

Throws

java.sql.SQLException

setFetchDirection

Gives the driver a hint as to the row process direction.

```
public void setFetchDirection(int iDir)
```

Name	Description
iDir	Fetch direction to use.

Throws

java.sql.SQLException

getFetchSize

Gets the number of rows to fetch suggested to the driver.

```
public int getFetchSize()
```

Returns

Number of rows to fetch at a time.

Throws

java.sql.SQLException

setFetchSize

Gives the drivers a hint as to the number of rows that should be fetched each time.

```
public void setFetchSize(int nSize)
```

Name	Description
nSize	Number of rows to fetch at a time.

Throws

java.sql.SQLException

getCursorName

Retrieves the name for the cursor associated with this ResultSet object.

```
public java.lang.String getCursorName()
```

Returns

Name of cursor

Throws

java.sql.SQLException

close

Immediately releases a ResultSet object's resources.

```
public void close()
```

Throws

java.sql.SQLException

next

Moves the cursor to the next row of the result set.

```
public boolean next()
```

Returns

true if successful

Throws

java.sql.SQLException

previous

Moves the cursor to the previous row of the result set.

```
public boolean previous()
```

Returns

true if successful

Throws

java.sql.SQLException

absolute

Moves the cursor to the specified row of the result set.

```
public boolean absolute(int index)
```

Returns

true if successful

Throws

java.sql.SQLException

relative

Moves the cursor to the specified row relative to the current row of the result set.

```
public boolean relative(int index)
```

Returns

true if successful

Throws

java.sql.SQLException

first

Moves the cursor to the first row of the result set.

```
public boolean first()
```

Returns

true if successful

Throws

java.sql.SQLException

isFirst

Determines whether the cursor is on the first row of the result set.

```
public boolean isFirst()
```

Returns

true if on the first row.

Throws

java.sql.SQLException

last

Moves the cursor to the last row of the result set.

```
public boolean last()
```

Returns

true if successful

Throws

java.sql.SQLException

isLast

Determines whether the cursor is on the last row of the result set.

```
public boolean isLast()
```

Returns

true if on the last row

Throws

java.sql.SQLException

beforeFirst

Moves the cursor before the first row of the result set.

```
public void beforeFirst()
```

Throws

java.sql.SQLException

isBeforeFirst

Determines whether the cursor is before the first row of the result set.

```
public boolean isBeforeFirst()
```

Returns

true if before the first row

Throws

java.sql.SQLException

afterLast

Moves the cursor after the last row of the result set.

```
public void afterLast()
```

Throws

java.sql.SQLException

isAfterLast

Determines whether the cursor is after the last row of the result set.

```
public boolean isAfterLast()
```

Returns

true if after the last row

Throws

java.sql.SQLException

getType

Retrieves the scroll type of cursor associated with the result set.

```
public int getType()
```

Returns

Scroll type of cursor.

Throws

java.sql.SQLException

findColumn

Returns the column index for the named column in the result set.

```
public int findColumn(java.lang.String index)
```

Name	Description
index	Column name.

Returns

Corresponding column index.

Throws

java.sql.SQLException

getObject

Gets the object value of the specified column.

```
public java.lang.Object getObject(int index)
```

Name	Description
index	Column index.

Returns

Object form of column value.

Throws

java.sql.SQLException

getObject

Gets the object value of the specified column.

```
public java.lang.Object getObject(java.lang.String index)
```

Name	Description
index	Column index.

Returns

Object form of column value.

Throws

java.sql.SQLException

getObject

Gets the object value of the specified column using the given type map.

```
public java.lang.Object getObject(int index, java.util.Map.map)
```

Name	Description
index	Column index.
map	Type map.

Returns

Object form of column value.

Throws

java.sql.SQLException

getObject

Gets the object value of the specified column using the given type map.

```
public java.lang.Object getObject(java.lang.String index,  
java.util.Map map)
```

Name	Description
index	Column index.
map	Type map.

Returns

Object form of column value.

Throws

java.sql.SQLException

getBoolean

Gets the boolean value of the specified column.

```
public boolean getBoolean(int index)
```

Name	Description
index	Column index.

Returns

Boolean value of the column.

Throws

java.sql.SQLException

getBoolean

Gets the boolean value of the specified column.

```
public boolean getBoolean(java.lang.String index))
```

Name	Description
index	Column name.

Returns

Boolean value of the column.

Throws

java.sql.SQLException

getBytes

Gets the byte value of the specified column.

```
public byte getBytes(int index)
```

Name	Description
index	Column index.

Returns

Boolean value of the column.

Throws

java.sql.SQLException

getShort

Gets the short value of the specified column.

```
public short getShort(int index)
```

Name	Description
index	Column index.

Returns

Short value of the column.

Throws

java.sql.SQLException

getShort

Gets the short value of the specified column.

```
public short getShort(java.lang.String index)
```

Name	Description
index	Column name.

Returns

Short value of the column.

Throws

java.sql.SQLException

getInt

Gets the integer value of the specified column.

```
public int getInt(int index)
```

Name	Description
index	Column index.

Returns

Int value of the column.

Throws

java.sql.SQLException

getInt

Gets the integer value of the specified column.

```
public int getInt(java.lang.String index)
```

Name	Description
index	Column name.

Returns

Int value of the column.

Throws

java.sql.SQLException

getLong

Gets the long value of the specified column.

```
public long getLong(int index)
```

Name	Description
index	Column index.

Returns

Long value of the column.

Throws

java.sql.SQLException

getLong

Gets the long value of the specified column.

```
public long getLong(java.lang.String index)
```

Name	Description
index	Column name.

Returns

Long value of the column.

Throws

java.sql.SQLException

getFloat

Gets the float value of the specified column.

```
public float getFloat(int index)
```

Name	Description
index	Column index.

Returns

Float value of the column.

Throws

java.sql.SQLException

getFloat

Gets the float value of the specified column.

```
public float getFloat(java.lang.String index)
```

Name	Description
index	Column name.

Returns

Float value of the column.

Throws

java.sql.SQLException

getDouble

Gets the double value of the specified column.

```
public double getDouble(int index)
```

Name	Description
index	Column index.

Returns

Double value of the column.

Throws

java.sql.SQLException

getBigDecimal

Gets the decimal value of the specified column.

```
public java.math.BigDecimal getBigDecimal(int index)
```

Name	Description
index	Column index.

Returns

Big decimal value of the column.

Throws

java.sql.SQLException

getBigDecimal

Gets the decimal value of the specified column.

```
public java.math.BigDecimal getBigDecimal(java.lang.String index)
```

Name	Description
index	Column name.

Returns

Big decimal value of the column.

Throws

java.sql.SQLException

getDate

Gets the date value of the specified column.

```
public java.sql.Date getDate(int index)
```

Name	Description
index	Column index.

Returns

Date value of the column.

Throws

java.sql.SQLException

getDate

Gets the date value of the specified column.

```
public java.sql.Date getDate(java.lang.String index)
```

Name	Description
index	Column name.

Returns

Date value of the column.

Throws

java.sql.SQLException

getDate

Gets the date value of the specified column using the time zone from the calendar.

```
public java.sql.Date getDate(java.lang.String index,  
java.util.Calendar calendar)
```

Name	Description
index	Column name.
calendar	Calendar to use.

Returns

Date value of the column.

Throws

java.sql.SQLException

getTime

Gets the time value of the specified column.

```
public java.sql.Time getTime(int index)
```

Name	Description
index	Column index.

Returns

Time value of the column.

Throws

java.sql.SQLException

getTime

Gets the time value of the specified column.

```
public java.sql.Time getTime(java.lang.String index)
```

Name	Description
index	Column name.

Returns

Time value of the column.

Throws

java.sql.SQLException

getTime

Gets the time value of the specified column.

```
public java.sql.Time getTime(int index, java.util.Calendar calendar)
```

Name	Description
index	Column index.
calendar	Calendar to use.

Returns

Time value of the column.

Throws

java.sql.SQLException

getTime

Gets the time value of the specified column.

```
public java.sql.Time getTime(java.lang.String index,  
java.util.Calendar calendar)
```

Name	Description
index	Column name.
calendar	Calendar to use.

Returns

Time value of the column.

Throws

java.sql.SQLException

getTimestamp

Gets the timestamp value of the specified column.

```
public java.sql.Timestamp getTimestamp(int index)
```

Name	Description
index	Column index.

Returns

The timestamp value of the column.

Throws

java.sql.SQLException

getTimestamp

Gets the timestamp value of the specified column.

```
public java.sql.Timestamp getTimestamp(java.lang.String index)
```

Name	Description
index	Column name.

Returns

The timestamp value of the column.

Throws

java.sql.SQLException

getTimestamp

Gets the timestamp value of the specified column using the time zone from the calendar.

```
public java.sql.Timestamp getTimestamp(int index, java.util.Calendar calendar)
```

Name	Description
index	Column index.

Returns

The timestamp value of the column.

Throws

java.sql.SQLException

getTimestamp

Gets the timestamp value of the specified column using the time zone from the calendar.

```
public java.sql.Timestamp getTimestamp(java.lang.String index,  
java.util.Calendar calendar)
```

Name	Description
index	Column name.
calendar	Calendar to use.

Returns

The timestamp value of the column.

Throws

java.sql.SQLException

getString

Gets the string value of the specified column.

```
public java.lang.String getString(int index)
```

Name	Description
index	Column index.

Returns

Returns the String value of the column.

Throws

java.sql.SQLException

getString

Gets the string value of the specified column.

```
public java.lang.String getString(java.lang.String index)
```

Name	Description
index	Column name.

Returns

Returns the String value of the column.

Throws

java.sql.SQLException

getBytes

Gets the byte array value of the specified column.

```
public byte[] getBytes(int index)
```

Name	Description
index	Column index.

Returns

Byte array value of the column.

Throws

java.sql.SQLException

getBytes

Gets the byte array value of the specified column.

```
public byte[] getBytes(java.lang.String index)
```

Name	Description
index	Column name.

Returns

Byte array value of the column.

Throws

java.sql.SQLException

getAsciiStream

Retrieves the value of the specified column value as a stream of ASCII characters.

```
public java.io.InputStream getAsciiStream(int index)
```

Name	Description
index	Column index.

Returns

ASCII output stream value of the column.

Throws

java.sql.SQLException

getAsciiStream

Retrieves the value of the specified column value as a stream of ASCII characters.

```
public java.io.InputStream getAsciiStream(java.lang.String index)
```

Name	Description
index	Column name.

Returns

ASCII output stream value of the column.

Throws

java.sql.SQLException

getBinaryStream

Retrieves the value of the specified column as a stream of uninterpreted bytes.

```
public java.io.InputStream getBinaryStream(int index)
```

Name	Description
index	Column index.

Returns

Binary out steam value of the column.

Throws

java.sql.SQLException

getBinaryStream

Retrieves the value of the specified column as a stream of uninterpreted bytes.

```
public java.io.InputStream getBinaryStream(java.lang.String index)
```

Name	Description
index	Column name.

Returns

Binary out steam value of the column.

Throws

java.sql.SQLException

getCharacterStream

Retrieves the value of the specified column as a Reader object.

```
public java.io.Reader getCharacterStream(int index)
```

Name	Description
index	Column index.

Returns

Reader for value in the column.

Throws

java.sql.SQLException

getArray

Gets the Array value of the specified column.

```
public java.sql.Array getArray(int index)
```

Name	Description
index	Column index.

Returns

Array value of the column.

Throws

java.sql.SQLException

getBlob

Gets the Blob value of the specified column.

```
public java.sql.Blob getBlob(int index)
```

Name	Description
index	Column index.

Returns

Blob value of the column.

Throws

java.sql.SQLException

getBlob

Gets the Blob value of the specified column.

```
public java.sql.Blob getBlob(java.lang.String index)
```

Name	Description
index	Column name.

Returns

Blob value of the column.

Throws

java.sql.SQLException

getClob

Gets the Clob value of the specified column.

```
public java.sql.Clob getClob(int index)
```

Name	Description
index	Column index.

Returns

Clob value of the column.

Throws

java.sql.SQLException

getClob

Gets the Clob value of the specified column.

```
public java.sql.Clob getClob(java.lang.String index)
```

Name	Description
index	Column name.

Returns

Clob value of the column.

Throws

java.sql.SQLException

getRef

Gets the Ref value of the specified column.

```
public java.sql.Ref getRef(int index)
```

Name	Description
index	Column index.

Returns

Ref value of the column.

Throws

java.sql.SQLException

getRef

Gets the Ref value of the specified column.

```
public java.sql.Ref getRef(java.lang.String index)
```

Name	Description
index	Column name.

Returns

Ref value of the column.

Throws

java.sql.SQLException

wasNull

Checks to see if the last value read was SQL NULL or not.

```
public boolean wasNull()
```

Returns

true if SQL NULL.

Throws

java.sql.SQLException

getWarnings

Gets the first SQL Warning that has been reported for this object.

```
public java.sql.SQLWarning getWarnings()
```

Returns

SQL warning.

Throws

java.sql.SQLException

clearWarnings

Clears any warnings reported on this object.

```
public void clearWarnings()
```

Throws

java.sql.SQLException

getRow

Retrieves the current row number in the result set.

```
public int getRow()
```

Returns

Current row number

Throws

java.sql.SQLException

refreshRow

Replaces the values in the current row of the result set with their current values in the database.

```
public void refreshRow()
```

Throws

java.sql.SQLException

insertRow

Inserts the contents of the insert row into the result set and the database.

```
public void insertRow()
```

Throws

java.sql.SQLException

updateRow

Updates the underlying database with the new contents of the current row.

```
public void updateRow()
```

Throws

java.sql.SQLException

deleteRow

Deletes the current row from the result set and the underlying database.

```
public void deleteRow()
```

Throws

java.sql.SQLException

6.4 com.stc.eways.jdbcx.SqlStatementAgent Class

```
java.lang.Object
|
+ -- com.stc.eways.jdbcx.StatementAgent
|
+ -- com.stc.eways.jdbcx.SqlStatementAgent
```

All Implemented Interfaces

ResetEventListener, SessionEventListener

```
public class SqlStatementAgent
```

```
extends StatementAgent
```

SQLStatement Agent that hosts a managed Statement object.

Constructors of the SqlStatementAgent

```
SqlStatementAgent
```

```
SqlStatementAgent
```

Methods of the SqlStatementAgent

[addBatch](#) on page 131

[execute](#) on page 130

[executeQuery](#) on page 130

[executeUpdate](#) on page 131

Constructor SqlStatementAgent

Creates new SQLStatementAgent with scroll direction TYPE_FORWARD_ONLY and concurrency CONCUR_READ_ONLY.

```
public SqlStatementAgent(Session session)
```

Name	Description
session	Connection session.

Constructor SqlStatementAgent

Creates a new SQLStatementAgent.

```
public SqlStatementAgent(Session session, int iScroll, int iConcur)
```

Name	Description
session	Connection session.
iScroll	Scroll direction: TYPE_FORWARD_ONLY, TYPE_SCROLL_INSENSITIVE, TYPE_SCROLL_SENSITIVE.
iConcur	Concurrency: CONCUR_READ_ONLY, CONCUR_UPDATABLE.

execute

Executes the specified SQL statement.

```
public boolean execute(java.lang.String sSql)
```

Name	Description
sSql	SQL statement.

Returns

true if the first result is a ResultSetAgent or false if it is an integer.

Throws

java.sql.SQLException

executeQuery

Executes the specified SQL query and returns a ResultSetAgent that contains the generated result set.

```
public ResultSetAgent executeQuery(java.lang.String sSql)
```

Name	Description
sSql	SQL statement.

Returns

A ResultSetAgent or null

Throws

java.sql.SQLException

executeUpdate

Executes the specified SQL statement and returns the number of rows that were affected.

```
public int executeUpdate(java.lang.String sSql)
```

Name	Description
sSql	SQL statement.

Returns

The number of rows affected by the update operation; 0 if no rows were affected.

Throws

java.sql.SQLException

addBatch

Adds the specified SQL statement to the list of commands to be sent as a batch.

```
public void addBatch(java.lang.String sSql)
```

Name	Description
sSql	SQL statement.

Throws

java.sql.SQLException

6.5 com.stc.eways.jdbcx.CallableStatementAgent Class

```
java.lang.Object  
|  
+ -- com.stc.eways.jdbcx.StatementAgent  
|  
+ -- com.stc.eways.jdbcx.PreparedStatementAgent  
|  
+ -- com.stc.eways.jdbcx.CallableStatementAgent
```

All Implemented Interfaces

ResetEventListener, SessionEventListener

Direct Known Subclasses

StoredProcedureAgent

```
public abstract class CallableStatementAgent  
extends PreparedStatementAgent
```

Agent hosts CallableStatement interface

Constructors of the CallableStatementAgent

CallableStatementAgent

CallableStatementAgent

CallableStatementAgent

Methods of the CallableStatementAgent

[getArray](#) on page 141

[getBlob](#) on page 142

[getBytes](#) on page 136

[getClob](#) on page 142

[getDate](#) on page 139

[getFloat](#) on page 137

[getLong](#) on page 137

[getObject](#) on page 135

[getShort](#) on page 136

[getTime](#) on page 139

[getTimestamp](#) on page 140

[registerOutParameter](#) on page 134

[sessionOpen](#) on page 133

[getBigDecimal](#) on page 138

[getBoolean](#) on page 136

[getBytes](#) on page 141

[getDate](#) on page 138

[getDouble](#) on page 138

[getInt](#) on page 137

[getObject](#) on page 135

[getRef](#) on page 143

[getString](#) on page 141

[getTimestamp](#) on page 140

[registerOutParameter](#) on page 134

[registerOutParameter](#) on page 134

[wasNull](#) on page 135

Constructor CallableStatementAgent

Creates new CallableStatementAgent with scroll direction TYPE_FORWARD_ONLY and concurrency CONCUR_READ_ONLY.

```
public CallableStatementAgent(Session session, java.lang.String  
sCommand)
```

Name	Description
session	Connection session.
sCommand	The Call statement used to invoke a stored procedure.

Constructor CallableStatementAgent

Creates a new CallableStatementAgent.

```
public CallableStatementAgent(Session session, int iScroll, int iConcur)
```

Name	Description
session	Connection session.
iScroll	Ignored.
iConcur	Ignored

Constructor CallableStatement Agent

Creates a new CallableStatementAgent.

```
public CallableStatementAgent(Session session, java.lang.String sCommand, int iScroll, int iConcur)
```

Name	Description
session	Connection session.
sCommand	The Call statement used to invoke a stored procedure.
iScroll	Scroll direction: TYPE_FORWARD_ONLY, TYPE_SCROLL_INSENSITIVE, TYPE_SCROLL_SENSITIVE
iConcur	Concurrency: CONCUR_READ_ONLY, CONCUR_UPDATEABLE

sessionOpen

Opens the session event handler.

```
public void sessionOpen(SessionEvent evt)
```

Overrides

sessionOpen in class PreparedStatementAgent

Name	Description
evt	Session event.

registerOutParameter

Registers the indexed OUT parameter with specified type.

```
public void registerOutParameter(int index, int iType)
```

Name	Description
index	Parameter index starting from 1.
iType	A JDBC type defined by <code>inava.sql.Types</code> .

Throws

`java.sql.SQLException`

registerOutParameter

Registers the indexed OUT parameter with specified type and scale.

```
public void registerOutParameter(int index, int iType, int iScale)
```

Name	Description
index	Parameter index starting from 1.
iType	A JDBC type defined by <code>inava.sql.Types</code> .
iScale	The number of digits to the right of the decimal point. Only applied to <code>DECIMAL</code> and <code>NUMERIC</code> types.

Throws

`java.sql.SQLException`

registerOutParameter

Registers the indexed OUT parameter with specified user-named type or REF type.

```
public void registerOutParameter(int index, int iType,
    java.lang.String sType)
```

Name	Description
index	Parameter index starting from 1.
iType	A JDBC type defined by <code>inava.sql.Types</code> .
tName	The fully-qualified name of the parameter being set. It is intended to be used by <code>REF</code> , <code>STRUCT</code> , <code>DISTINCT</code> , or <code>JAVA_OBJECT</code> .

Throws

java.sql.SQLException

wasNull

Returns whether or not the last OUT parameter read had the SQL NULL value.

```
public boolean wasNull()
```

Returns

true if the parameter read is SQL NULL; otherwise, false

Throws

java.sql.SQLException

getObject

Gets the value of the indexed parameter as an instance of Object.

```
public java.lang.Object getObject(int index)
```

Name	Description
index	Parameter index starting from 1.

Returns

The Object value

Throws

java.sql.SQLException

getObject

Gets the value of the indexed parameter as an instance of Object and uses map for the customer mapping of the parameter value.

```
public java.lang.Object getObject(int index, java.util.Map map)
```

Name	Description
index	Parameter index starting from 1.
map	A Map object for mapping from SQL type names for user-defined types to classes in the Java programming language.

Returns

An Object value

Throws

java.sql.SQLException

getBoolean

Gets the boolean value of the indexed parameter.

```
public boolean getBoolean(int index)
```

Name	Description
index	Parameter index starting from 1.

Returns

A boolean value

Throws

java.sql.SQLException

getBytes

Gets byte value of the indexed parameter.

```
public byte getByte(int index)
```

Name	Description
index	Parameter index starting from 1.

Returns

A byte value

Throws

java.sql.SQLException

getShort

Gets short value of the indexed parameter.

```
public short getShort(int index)
```

Returns

A short value

Throws

java.sql.SQLException

getInt

Gets integer value of the indexed parameter.

```
public int getInt(int index)
```

Name	Description
index	Parameter index starting from 1.

Returns

A int value

Throws

java.sql.SQLException

getLong

Gets long value of the indexed parameter.

```
public long getLong(int index)
```

Name	Description
index	Parameter index starting from 1.

Returns

A long value

Throws

java.sql.SQLException

getFloat

Gets float value of the indexed parameter.

```
public float getFloat(int index)
```

Name	Description
index	Parameter index starting from 1.

Returns

A float value

Throws

java.sql.SQLException

getDouble

Gets double value of the indexed parameter.

```
public double getDouble(int index)
```

Name	Description
index	Parameter index starting from 1.

Returns

A float value

Throws

java.sql.SQLException

getBigDecimal

Gets decimal value of the indexed parameter.

```
public java.math.BigDecimal getBigDecimal(int index)
```

Name	Description
index	Parameter index starting from 1.

Returns

A BigDecimal object

Throws

java.sql.SQLException

getDate

Gets date value of the indexed parameter.

```
public java.sql.Date getDate(int index)
```

Name	Description
index	Parameter index starting from 1.

Returns

A Date object

Throws

java.sql.SQLException

getDate

Gets date value of the indexed parameter with time zone from calendar.

```
public java.sql.Date getDate(int index, java.util.Calendar calendar)
```

Name	Description
index	Parameter index starting from 1.
cal	The Calendar object used to construct the timestamp.

Returns

A Date object

Throws

java.sql.SQLException

getTime

Gets time value of the indexed parameter.

```
public java.sql.Time getTime(int index)
```

Name	Description
index	Parameter index starting from 1.

Returns

A Time object

Throws

java.sql.SQLException

getTime

Gets time value of the indexed parameter with time zone from calendar.

```
public java.sql.Time getTime(int index, java.util.Calendar calendar)
```

Name	Description
index	Parameter index starting from 1.
cal	The Calendar object used to construct the timestamp.

Returns

A Time object

Throws

java.sql.SQLException

getTimeStamp

Gets timestamp value of the indexed parameter.

```
public java.sql.timestamp getTimeStamp(int index)
```

Name	Description
index	Parameter index starting from 1.

Returns

A Timestamp object

Throws

java.sql.SQLException

getTimeStamp

Gets timestamp value of the indexed parameter.

```
public java.sql.timestamp getTimeStamp(int index, java.util.Calendar calendar)
```

Name	Description
index	Parameter index starting from 1.
cal	The Calendar object used to construct the timestamp.

Returns

A Timestamp object

Throws

java.sql.SQLException

getString

Gets string value of the indexed parameter.

```
public java.lang.String getString(int index)
```

Name	Description
index	Parameter index starting from 1.

Returns

A String object

Throws

java.sql.SQLException

getBytes

Gets byte array value of the indexed parameter.

```
public byte[] getBytes(int index)
```

Name	Description
index	Parameter index starting from 1.

Returns

An array of bytes

Throws

java.sql.SQLException

getArray

Gets Array value of the indexed parameter.

```
public java.sql.Array getArray(int index)
```

Name	Description
index	Parameter index starting from 1.

Returns

An Array object

Throws

java.sql.SQLException

getBlob

Gets Blob value of the indexed parameter.

```
public java.sql.Blob getBlob(int index)
```

Name	Description
index	Parameter index starting from 1.

Returns

A Blob object

Throws

java.sql.SQLException

getClob

Gets Clob value of the indexed parameter.

```
public java.sql.Clob getClob(int index)
```

Name	Description
index	Parameter index starting from 1.

Returns

A Blob object

Throws

java.sql.SQLException

getRef

Gets Ref value of the indexed parameter.

```
public java.sql.Ref getRef(int index)
```

Name	Description
index	Parameter index starting from 1.

Returns

A Ref object

Throws

java.sql.SQLException

6.6 com.stc.eways.jdbcx.TableResultSet Class

```
java.lang.Object  
|  
+ -- com.stc.eways.jdbcx.StatementAgent  
|  
+ -- com.stc.eways.jdbcx.TableResultSet
```

All Implemented Interfaces

ResetEventListener, SessionEventListener

```
public abstract class TableResultSet  
extends StatementAgent
```

ResultSet to map selected records of table in the database

Methods of the TableResultSet

[absolute](#) on page 145

[beforeFirst](#) on page 146

[deleteRow](#) on page 149

[first](#) on page 145

[getAsciiStream](#) on page 148

[getBinaryStream](#) on page 148

[getCharacterStream](#) on page 149

[isAfterLast](#) on page 147

[afterLast](#) on page 147

[cancelRowUpdates](#) on page 150

[findColumn](#) on page 147

[getAsciiStream](#) on page 148

[getBinaryStream](#) on page 148

[getCharacterStream](#) on page 148

[insertRow](#) on page 149

[isBeforeFirst](#) on page 147

[isFirst](#) on page 146

[last](#) on page 146

[moveToInsertRow](#) on page 149

[previous](#) on page 144

[rowDeleted](#) on page 150

[rowUpdated](#) on page 150

[updateRow](#) on page 149

[isLast](#) on page 146

[moveToCurrentRow](#) on page 150

[next](#) on page 144

[relative](#) on page 145

[rowInserted](#) on page 150

[select](#) on page 144

[wasNull](#) on page 151

select

Select table records.

```
public void select(java.lang.String sWhere)
```

Name	Description
sWhere	Where condition for the query.

Throws

java.sql.SQLException

next

Navigate one row forward.

```
public boolean next()
```

Returns

true if the move to the next row is successful; otherwise, false.

Throws

java.sql.SQLException

previous

Navigate one row backward. It should be called only on ResultSetAgent objects that are TYPE_SCROLL_SENSITIVE or TYPE_SCROLL_INSENSITIVE.

```
public boolean previous()
```

Returns

true if the cursor successfully moves to the previous row; otherwise, false.

Throws

java.sql.SQLException

absolute

Move cursor to specified row number. It should be called only on ResultSetAgent objects that are TYPE_SCROLL_SENSITIVE or TYPE_SCROLL_INSENSITIVE.

Name	Description
row	An integer other than 0.

Returns

true if the cursor successfully moves to the specified row; otherwise, false.

Throws

java.sql.SQLException

relative

Move the cursor forward or backward a specified number of rows. It should be called only on ResultSetAgent objects that are TYPE_SCROLL_SENSITIVE or TYPE_SCROLL_INSENSITIVE.

```
public boolean relative(int rows)
```

Name	Description
rows	The number of rows to move the cursor, starting at the current row. If the rows are positive, the cursor moves forward; if the rows are negative, the cursor moves backwards.

Returns

true if the cursor successfully moves to the number of rows specified; otherwise, false.

Throws

java.sql.SQLException

first

Move the cursor to the first row of the result set. It should be called only on ResultSetAgent objects that are TYPE_SCROLL_SENSITIVE or TYPE_SCROLL_INSENSITIVE.

```
public boolean first()
```

Returns

true if the cursor successfully moves to the first row; otherwise, false.

Throws

java.sql.SQLException

isFirst

Check if the cursor is on the first row. It should be called only on ResultSetAgent objects that are TYPE_SCROLL_SENSITIVE or TYPE_SCROLL_INSENSITIVE.

```
public boolean isFirst()
```

Returns

true if the cursor successfully moves to the first row; otherwise, false.

Throws

java.sql.SQLException

last

Move to the last row of the result set. It should be called only on ResultSetAgent objects that are TYPE_SCROLL_SENSITIVE or TYPE_SCROLL_INSENSITIVE.

```
public boolean last()
```

Returns

true if the cursor successfully moves to the last row; otherwise, false.

Throws

java.sql.SQLException

isLast

Check if the cursor is positioned on the last row. It should be called only on ResultSetAgent objects that are TYPE_SCROLL_SENSITIVE or TYPE_SCROLL_INSENSITIVE.

```
public boolean isLast()
```

Returns

true if the cursor is on the last row; otherwise, false

Throws

java.sql.SQLException

beforeFirst

Move the cursor before the first row. It should be called only on ResultSetAgent objects that are TYPE_SCROLL_SENSITIVE or TYPE_SCROLL_INSENSITIVE.

```
public void beforeFirst()
```

Throws

java.sql.SQLException

isBeforeFirst

Check if the cursor is positioned before the first row. It should be called only on ResultSetAgent objects that are TYPE_SCROLL_SENSITIVE or TYPE_SCROLL_INSENSITIVE.

```
public boolean isBeforeFirst()
```

Returns

true if the cursor successfully moves before the first row; otherwise, false

Throws

java.sql.SQLException

afterLast

Move the cursor after the last row. It should be called only on ResultSetAgent objects that are TYPE_SCROLL_SENSITIVE or TYPE_SCROLL_INSENSITIVE.

```
public void afterLast()
```

Throws

java.sql.SQLException

isAfterLast

Returns true if the cursor is positioned after the last row. It should be called only on ResultSetAgent objects that are TYPE_SCROLL_SENSITIVE or TYPE_SCROLL_INSENSITIVE.

```
public boolean isAfterLast()
```

Returns true if the cursor successfully moves after the last row; otherwise, false.

Throws

java.sql.SQLException

findColumn

Finds the index of the named column.

```
public int findColumn(java.lang.String index)
```

Throws

java.sql.SQLException

getAsciiStream

Returns the column data as an AsciiStream.

```
public java.io.InputStream getAsciiStream(int index)
```

Throws

java.sql.SQLException

getAsciiStream

Returns the column data as an AsciiStream.

```
public java.io.InputStream getAsciiStream(java.lang.String  
columnName)
```

Throws

java.sql.SQLException

getBinaryStream

Returns the column data as BinaryStream.

```
public java.io.InputStream getBinaryStream(int index)
```

Throws

java.sql.SQLException

getBinaryStream

Returns the column data as BinaryStream.

```
public java.io.InputStream getBinaryStream(java.lang.String  
columnName)
```

Throws

java.sql.SQLException

getCharacterStream

Returns the column data as CharacterStream.

```
public java.io.Reader getCharacterStream(int index)
```

Throws

java.sql.SQLException

getCharacterStream

Returns the column data as CharacterStream.

```
public java.io.Reader getCharacterStream(java.lang.String columnName)
```

Throws

java.sql.SQLException

refreshRow

Refreshes the current row with its most recent value from the database.

```
public void refreshRow()
```

Throws

java.sql.SQLException

insertRow

Inserts the contents of the current row into the database.

```
public void insertRow()
```

Throws

java.sql.SQLException

updateRow

Updates the contents of the current row into the database.

```
public void updateRow()
```

Throws

java.sql.SQLException

deleteRow

Deletes the contents of the current row from the database.

```
public void deleteRow()
```

Throws

java.sql.SQLException

moveToInsertRow

Moves the current position to a new insert row.

```
public void moveToInsertRow()
```

Throws

java.sql.SQLException

moveToCurrentRow

Moves the current position to the current row. It is used after you insert a row.

```
public void moveToCurrentRow()
```

Throws

java.sql.SQLException

cancelRowUpdates

Cancels any updates made to this row.

```
public void cancelRowUpdates()
```

Throws

java.sql.SQLException

rowInserted

Returns true if the current row has been inserted.

```
public boolean rowInserted()
```

Throws

java.sql.SQLException

rowUpdated

Returns true if the current row has been updated.

```
public boolean rowUpdated()
```

Throws

java.sql.SQLException

rowDeleted

Returns true if the current row has been deleted.

```
public boolean rowDeleted()
```

Throws

java.sql.SQLException

wasNull

Returns true if the last data retrieved is NULL.

```
public boolean wasNull()
```

Throws

```
java.sql.SQLException
```

Appendix

A.1 ADO/ODBC Calls

These calls are made by the DBWizard for metadata discovery.

A.1.1 ADO Calls

OpenSchema(adSchemaTables)	Retrieves the list of tables.
OpenSchema(adSchemaColumns)	Retrieves the column information for a table.
OpenSchema(adSchemaProcedures)	Retrieves the list of stored procedures.
OpenSchema(adSchemaProcedureParameters)	Retrieves the parameter information of a stored procedure.

A.1.2 ODBC Calls

SQLDataSources	Retrieves the list of DSNs.
SQLPrepared	Used to prepare a SQL prepared statement string.
SQLNumParams	Retrieves the number of parameters in a prepared statement.
SQLDescribeParam	Retrieves information about a prepared statement parameter.
SQLNumResultCols	Retrieves the number of resultset columns in a prepared statement.
SQLDescribeCol	Retrieves information about a resultset column in a prepared statement.

Index

B

Batch Operations 64

C

class parameter
 Connector settings 32
 Data Source settings 29
 Collaboration Service Java 46–47
 Collecting Data from Output Parameters 60
 component relationship 47
 components, Java-enabled 47
 configuration file sections
 Connector settings 31–32
 configuration parameters
 class 29, 32
 DatabaseName 30
 password 31
 user name 30
 configuration steps, schema 66
 configuring e*Way connections 28–32
 connection establishment mode 32
 connection inactivity timeout 33
 Connection Manager 33
 connection types, JDBC 31
 connection verification interval 33
 connector objects, JDBC 32
 Connector settings 31–32
 creating e*Way connections 28

D

Database Configuration Node 65
 DatabaseName parameter 30
 DataSource Settings 29
 db.ctl 16
 DB2.def 16
 driver class, JDBC 29

E

e*Way connections
 configuring 28–32
 creating 28

executeBusinessRules() 47

G

getMoreResults 61
 getResultSet 61
 getUpdateCount 61

H

host system requirements 11

I

implementation, sample 65–80

J

Java Collaboration Service 46–47
 Java ETD Builder 47–48
 Java JDK 1.3 12
 Java requirements 12
 Java-enabled components 47
 JDBC 48
 connection types 31
 connector objects 32
 driver class 29

M

Mixing XA-Compliant and XA-Noncompliant e*Way Connections 32

P

password parameter 31
 Prepared Statement 62

R

requirements
 host system 11
 Java version 12
 Returning Result Sets from Sybase, DB2, and SQL Server 60

S

sample schema 65–80
 scenario, sample 65–80
 schema configuration steps 66
 stcewjdbcx.ctl 16
 stcjdbcx.jar 10

Index

T

The Stored Procedure 59
transaction mode 32
type 31

U

UNIX 15
user name parameter 30
userInitialize() 47
userTerminate() 47

W

Windows NT / Windows 2000 10, 11, 12, 14