

**SeeBeyond™ eBusiness Integration Suite**

# Cobol Copybook Converter User's Guide

*Release 4.5.3*



The information contained in this document is subject to change and is updated periodically to reflect changes to the applicable software. Although every effort has been made to ensure the accuracy of this document, SeeBeyond Technology Corporation (SeeBeyond) assumes no responsibility for any errors that may appear herein. The software described in this document is furnished under a License Agreement and may be used or copied only in accordance with the terms of such License Agreement. Printing, copying, or reproducing this document in any fashion is prohibited except in accordance with the License Agreement. The contents of this document are designated as being confidential and proprietary; are considered to be trade secrets of SeeBeyond; and may be used only in accordance with the License Agreement, as protected and enforceable by law. SeeBeyond assumes no responsibility for the use or reliability of its software on platforms that are not supported by SeeBeyond.

e\*Gate, e\*Insight, e\*Way, e\*Xchange, e\*Xpressway, eBI, iBridge, Intelligent Bridge, IQ, SeeBeyond, and the SeeBeyond logo are trademarks and service marks of SeeBeyond Technology Corporation. All other brands or product names are trademarks of their respective companies.

© 1999–2002 by SeeBeyond Technology Corporation. All Rights Reserved. This work is protected as an unpublished work under the copyright laws.

**This work is confidential and proprietary information of SeeBeyond and must be maintained in strict confidence.**

Version 20021104162940.

# Contents

---

## Chapter 1

<b>Introduction</b>	<b>4</b>
Overview	4
Intended Reader	4
System Requirements	4
External System Requirements	5

---

## Chapter 2

<b>Installation</b>	<b>6</b>
Windows NT or Windows 2000	6
Pre-installation	6
Installation Procedure	6
Files/directories Created by Installation	7

---

## Chapter 3

<b>Implementation</b>	<b>8</b>
Basic Properties	8
Unsupported Features	8
Using the ETD in Java Collaborations	8
Basic Procedures	9
Cobol Copy Converter Example	11
Sample Cobol Specification File Example	12
Sample ETD (*.ssc) File After Cobol Copybook Conversion	12

<b>Index</b>	<b>13</b>
--------------	-----------

# Introduction

This chapter introduces you to the Cobol Copybook Converter User's Guide.

---

## 1.1 Overview

The Cobol Copybook Converter is a feature of the SeeBeyond Technology Corporation™ (SeeBeyond™) e\*Gate Integrator system and is used to convert Cobol Copybook files into e\*Gate Event Type Definition (ETD) files.

---

## 1.2 Intended Reader

The reader of this guide is presumed to be a developer or system administrator with responsibility for maintaining the e\*Gate system, to have expert-level knowledge of Windows NT/2000 operations and administration, and to be thoroughly familiar with Windows-style GUI operations.

---

## 1.3 System Requirements

The Cobol Copybook Converter is available on the following operating systems:

- Windows 2000, Windows 2000 SP1, and Windows 2000 SP2
- Windows 2000 (Japanese), Windows 2000 SP1 (Japanese), and Windows 2000 SP2 (Japanese)
- Windows 2000 (Korean), Windows 2000 SP1 (Korean), and Windows 2000 SP2 (Korean)—Command line option only
- Windows NT 4 SP6a
- Windows NT 4 SP6a (Japanese)
- Windows NT 4 SP6a (Korean)—Command line option only

To use the Cobol Copybook Converter, you need the following:

- An e\*Gate Participating Host, version 4.5 or later.

- A TCP/IP network connection.
- 10 MB free disk space for executable, configuration, library, and script files.

### 1.3.1 External System Requirements

The Cobol Copybook Converter supports the following external systems:

- ICL Copybooks

# Installation

This chapter explains how to install the Cobol Copybook Converter.

---

## 2.1 Windows NT or Windows 2000

### 2.1.1 Pre-installation

- Exit all Windows programs before running the setup program, including any anti-virus applications.
- You must have Administrator privileges to install this product.

### 2.1.2 Installation Procedure

To install the Cobol Copybook Converter on Windows NT or Windows 2000:

- 1 Log in on the workstation on which you want to install the Cobol Copybook Converter.
- 2 Insert the installation CD-ROM into the CD-ROM drive.
- 3 If the CD-ROM drive's "Autorun" feature is enabled, the setup application should launch automatically. Otherwise, use Windows Explorer or the Control Panel's **Add/Remove Applications** feature to launch the file **setup.exe** on the CD-ROM drive.
- 4 The InstallShield setup application will launch. Follow the on-screen instructions until you come to the Select Components screen.
- 5 Check the box labelled **Add-ons**. Then, follow the on-screen instructions to install the product.

**Note:** *Be sure to install all of the files in the suggested "client" installation directory. The installation utility detects and suggests the appropriate installation directory. Unless you are directed to do so by SeeBeyond support personnel, do not change the suggested "installation directory" setting.*

---

## 2.2 Files/directories Created by Installation

The Cobol Copybook Converter installation process installs the files shown in Table 1 below within the e\*Gate directory tree. Files are installed within the **egate\client** tree on the Participating Host and committed to the **default** schema on the Registry Host.

**Table 1** Files Created by Installation

e*Gate Directory	File(s)
\bin	stccococo.exe

# Implementation

The Cobol Copybook Converter is a build tool that takes a Cobol copybook specification file as input and creates an Event Type Definition (ETD) file, that is, an \*.ssc file.

---

## 3.1 Basic Properties

The Cobol Copybook Converter has the following basic properties:

- You may run this command via the ETD Editor or from the command line.
- The system presents the copybook specification to the Cobol Copybook Converter in a flat file. The converter feature uses the 01 segment of the Cobol copybook as the root node of the ETD.

For example, if you are using a CICS e\*Way, after you have generated an ETD file, the e\*Gate system can populate the file and present it into the COMM AREA for CICS calls. Similarly, the system can parse the output COMM AREA from CICS into ETDs created by the Cobol Copybook Converter feature.

*Note:* The Cobol Copybook Converter must have valid Cobol syntax to complete an accurate conversion.

## Unsupported Features

The following Cobol Copybook features are not supported by the Cobol Copybook Converter:

- **Cobol Copy Statements** – Cobol copy statements that are imbedded within the Cobol Copybook are not supported.
- **Usage Pointer** – Usage pointer statements are not supported. To accommodate these elements, you must change the statement to **PIC X(4)**. The Cobol Copybook Converter will interpret this and create a node of the correct length with the subsequent nodes as siblings instead of child nodes.

## Using the ETD in Java Collaborations

The ETDs generated by the Cobol Copybook Converter are intended to be used with Collaboration Rules Scripts created by the Monk Collaboration Rules Editor. However,



these ETD files (.ssc) can be converted into Java Event Type Definitions (.xsc) by using the Java ETD Editor's SSC Wizard. For information on using the SSC Wizard, see the *e\*Gate Integrator User's Guide*.

---

## 3.2 Basic Procedures

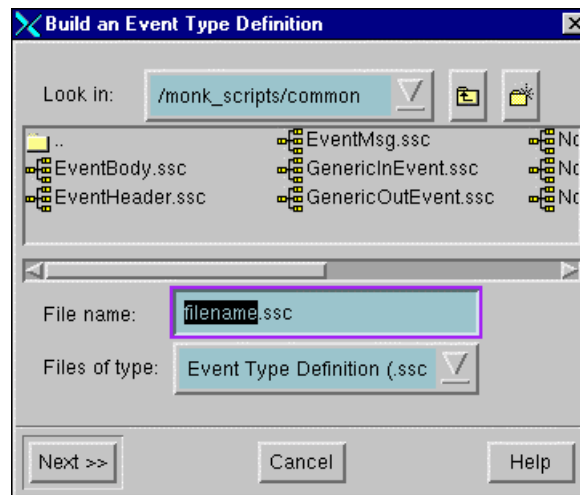
You may access the Cobol Copybook Converter feature via the ETD Editor. Use the procedure below to create an ETD based on the data your installation requires.

**Note:** *The GUI version of the Cobol Copybook Converter is not available under the Korean versions of Windows NT and Windows 2000. For information on the command-line version of the Cobol Copybook Converter, see page 11.*

To create ETD files using the ETD Editor:

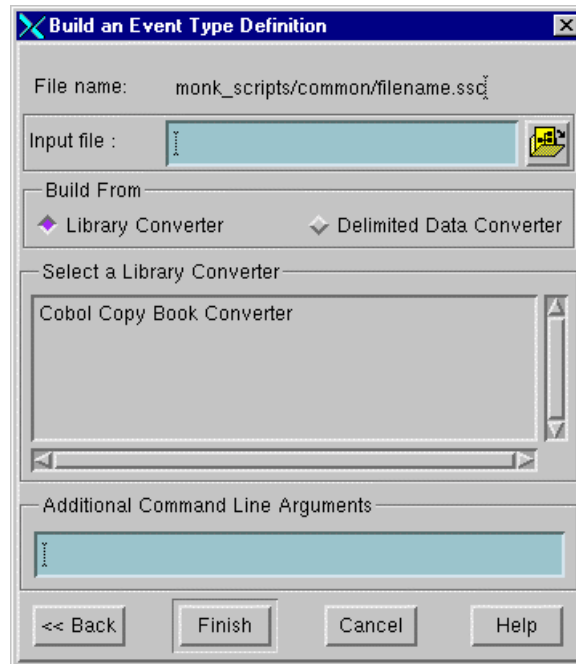
- 1 On the ETD Editor window's Toolbar, click **Build**.

The first **Build an Event Type Definition** dialog box appears (see below).



- 2 In the **File name** box, type the name of the ETD file you wish to build. *Do not specify any file extension.* The Editor supplies the \*.ssc extension for you.
- 3 Under **Files of type**, leave **Event Type Definition** selected.
- 4 Click **Next**.

The second **Build an Event Type Definition** dialog box appears (see below).



- 5 Enter the **Input file** name and path—use the browse button to find the correct path.
- 6 Under **Build From**, select **Library Converter**.
- 7 Under **Select a Library Converter**, select **Cobol Copy Book Converter**.
- 8 Click **Finish**.

The dialog box closes, and the new ETD appears in the Workspace pane of the ETD Editor window. The conversion process is automatic.

- 9 Click **Save** to save the new ETD.

**To create ETD files using the command line:**

To run the Cobol Copybook Converter from the command line, as a batch utility, enter:

```
stccococo [-I] [-d] [-nls] -i <copybook_file> <etd>.ssc
```

The following table explains these command options:

Command	Type	Description
-I	String	An optional parameter that indicates ICL data types.
-d	String	An optional parameter that indicates DBCS input data mode.
-nls	String	Allows the conversion of Cobol files written in Japanese; currently the only string supported is SJIS (Japanese character set). Use of any other (or no) parameter defaults to English/ASCII.
-i	String	Indicates the input file and path name as well as the output ETD path and file name. This parameter is required.
copybook_file	Path	The relative path of the file to be used as the input (required).
etd	String	The name of the ETD file you wish to create (required).

**Note:** If you enter *stccococo -h* at the command line, seeking help, you get the following message:

```
USAGE: stccococo [-I] [-d] [-c control [-s section]] [-nls <Character Set>] -i
copybook_file <etd>.ssc
  -I indicates ICL data origin
  -d indicates DBCS mode
```

Ignore references to the *-c* and *-s* switches. They are for future use only and do not operate in the current system.

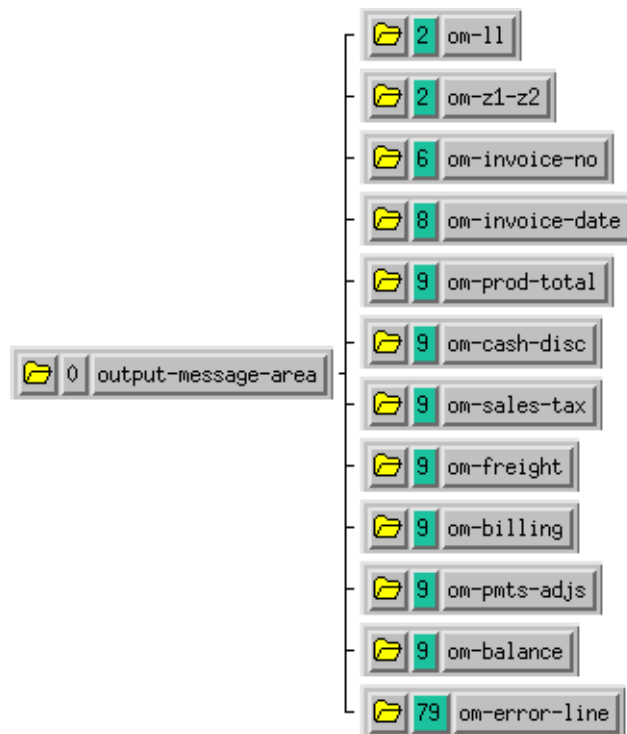
### 3.2.1 Cobol Copy Converter Example

The following page shows before and after examples of a Cobol copybook specification file (which was the input) and the ETD (\*.ssc) file after the conversion.

### Sample Cobol Specification File Example

000700	01	output-message-area.		00070000
000800	05	om-l1	pic s9(3) comp value +160.	00080000
000900	05	om-z1-z2	pic s9(3) comp value zero.	00090000
001000	05	om-invoice-no	pic x(6).	00100000
001100	05	om-invoice-date	pic 99/99/99.	00110000
001200	05	om-prod-total	pic z(5).99-.	00120000
001300	05	om-cash-disc	pic z(5).99-.	00130000
001400	05	om-sales-tax	pic z(5).99-.	00140000
001500	05	om-freight	pic z(5).99-.	00150000
001600	05	om-billing	pic z(5).99-.	00160000
001700	05	om-pmts-adjs	pic z(5).99-.	00170000
001800	05	om-balance	pic z(5).99-.	00180000
001900	05	om-error-line	pic x(79).	00190000

### Sample ETD (\*.ssc) File After Cobol Copybook Conversion



# Index

## B

building an ETD  
    command line operations 11  
    GUI operations 9

## C

CICS 8  
    COMM AREA 8  
Cobol Copy Converter example 11  
Cobol Copy statements 8  
Cobol Copybook Converter overview 4  
COMM AREA 8

## F

files and directories 7

## I

ICL Copybooks 5  
implementation 8  
installation 6  
    Windows 2000 6  
    Windows NT 6  
intended reader 4

## O

operating systems 4  
    international 4  
overview, Cobol Copybook Converter 4

## P

PIC X(4) 8  
platform support 4

## R

requirements 4

## S

statements  
    Cobol Copy 8  
    usage pointer 8  
stccococo.exe 7, 11  
system requirements 4  
    external system 5

## U

unsupported features 8  
usage pointer statements 8

## W

Windows 2000 4, 6  
Windows NT 4, 6