

SeeBeyond™ eBusiness Integration Suite

SWIFT ETD Library User's Guide

Release 4.5.3

Java Version



The information contained in this document is subject to change and is updated periodically to reflect changes to the applicable software. Although every effort has been made to ensure the accuracy of this document, SeeBeyond Technology Corporation (SeeBeyond) assumes no responsibility for any errors that may appear herein. The software described in this document is furnished under a License Agreement and may be used or copied only in accordance with the terms of such License Agreement. Printing, copying, or reproducing this document in any fashion is prohibited except in accordance with the License Agreement. The contents of this document are designated as being confidential and proprietary; are considered to be trade secrets of SeeBeyond; and may be used only in accordance with the License Agreement, as protected and enforceable by law. SeeBeyond assumes no responsibility for the use or reliability of its software on platforms that are not supported by SeeBeyond.

e*Gate, e*Insight, e*Way, e*Xchange, e*Xpressway, iBridge, Intelligent Bridge, IQ, SeeBeyond, and the SeeBeyond logo are trademarks and service marks of SeeBeyond Technology Corporation. All other brands or product names are trademarks of their respective companies.

© 1999-2002 by SeeBeyond Technology Corporation. All Rights Reserved. This work is protected as an unpublished work under the copyright laws.

This work is confidential and proprietary information of SeeBeyond and must be maintained in strict confidence.

Version 20021015020834.

Contents

Preface	5
Intended Reader	5
Online Viewing	5
<hr/>	
Chapter 1	
Introduction	6
Overview	6
SWIFT Message Structure	6
Library Versions	7
Template Versions	7
Monk and Java	7
Full and Slim	7
Java Representation	8
Customizing the Templates	10
Logical Replies	11
e*Gate Acknowledgment to SWIFT	11
SWIFT Acknowledgment to e*Gate	11
Successful messages	11
Unsuccessful messages	12
Availability	13
<hr/>	
Chapter 2	
Installation	14
System Requirements	14
Procedure	15
Windows Systems	15
UNIX Systems	17
Files and Directories	18

Chapter 3

The SWIFT ETD Library 19

SWIFT Message Types 19

MT 1xx Messages	20
MT 2xx Messages	21
MT 3xx Messages	22
MT 4xx Messages	23
MT 5xx Messages	24
MT 6xx Messages	27
MT 7xx Messages	28
MT 8xx Messages	29
MT 9xx Messages	30
MT n9x Messages	31

Index 32

Preface

This User's Guide describes the SWIFT ETD Library, including procedures for installing the Library on your Windows NT/2000 or UNIX-based system.

P.1 Intended Reader

The reader of this guide is presumed to be a developer or system administrator with responsibility for maintaining the SeeBeyond™ e*Gate™ Integrator system, and have a working knowledge of:

- Operation and administration of the appropriate operating systems (see [Availability](#) on page 13)
- Windows-style GUI operations
- Either the e*Way Intelligent Adapter for SWIFT ADK or the SWIFT 2000 Gold Certified e*Way (whichever is applicable)

P.2 Online Viewing

This User's Guide is provided in Adobe Acrobat's Portable Document Format (PDF). As such, it can be printed out on any printer or viewed online. When viewing online, you can take advantage of the extensive hyperlinking imbedded in the document to navigate quickly throughout the Guide.

Hyperlinking is available in:

- The Table of Contents
- The Index
- Within the chapter text, indicated by **blue print**

Existence of a hyperlink *hotspot* is indicated when the hand cursor points to the text. Note that the hotspots in the Index are the *page numbers*, not the topics themselves. Returning to the spot you hyperlinked from is accomplished by right-clicking the mouse and selecting **Go Back** on the resulting menu.

Introduction

1.1 Overview

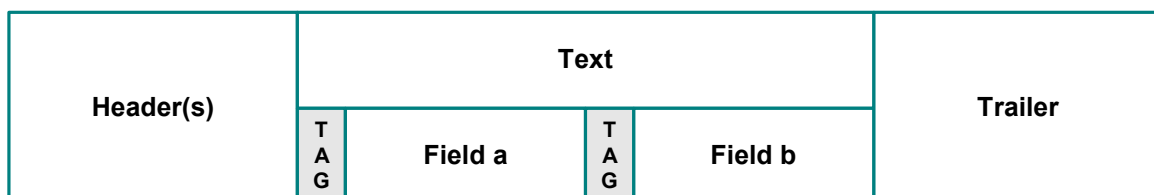
The SWIFT ETD Library contains pre-defined template Event Type Definitions (ETDs) for use with an e*Way Intelligent Adapter for SWIFT. These ETDs correspond to the SWIFT user-to-user message types used for the SWIFT network, as defined in the SWIFT Standards documentation.

1.2 SWIFT Message Structure

A message used by the SWIFT network has a maximum of five components:

- Basic header block
- Application header block
- User header block (optional)
- Text block
- Trailer block

Figure 1 SWIFT Message Structure



Each field component in the text block is preceded by a field tag; there are no field tags in the header and trailer blocks. The one exception to this format is MT 121, EDIFACT FINPAY, which has a single text field with no field tag identifier.

Information about a field that is common to all message types in which that field is used is found in the *Standards - General Field Definitions* volume of the *SWIFT User Handbook*. Information about a field that is specific to its use with a particular message

type is found in the field specifications section of the *Standards* volume of the *SWIFT User Handbook* for that message type.

1.3 Library Versions

SWIFT periodically revises their Message Types, adding to or subtracting from the total set of Message Types, and modifying the definitions of individual Message Types. New sets are identified with the year they are issued, such as 2000, 2001, and 2002.

SeeBeyond releases new ETD libraries corresponding to these revised sets of SWIFT Message Types. The current release includes templates supporting the 2001 and 2002 Message Type sets. The library for the year 2001 is named `java_swift01`, the library for the year 2002 is named `java_swift02`.

1.4 Template Versions

1.4.1 Monk and Java

Beginning with e*Gate 4.5, Collaborations can be created in either Monk or Java. On Windows platforms, installing the SWIFT ETD Library for either 2001 or 2002 installs both Monk and Java versions of the Library. The two versions are installed into different directory paths, and are accessed by the Monk or Java ETD Editors, respectively.

1.4.2 Full and Slim

Two versions of the templates are available for each library representation (Monk or Java): **full** and **slim**. The functional difference between the two is that the syntax checking performed by the **slim** versions is limited to field level, whereas the **full** versions check to the sub-field level. Using the **slim** versions assumes that the messages have been validated previously. If this is not the case, you should use the **full** versions to fully validate the messages.

Java Representation

Figure 2 and Figure 3 illustrate the structural difference between **slim** and **full** templates for SWIFT Message Type MT 111, as they respectively appear in the Java ETD Editor. Note that the branches in the **slim** versions typically end with **Tag/Data** node pairs, whereas the **full** versions have branches ending in nodes representing the actual data fields. Although the files in this example are similar in size, the **full** version of a template *can* be several times the size of the **slim** version.

Figure 2 SLIM Example - Java

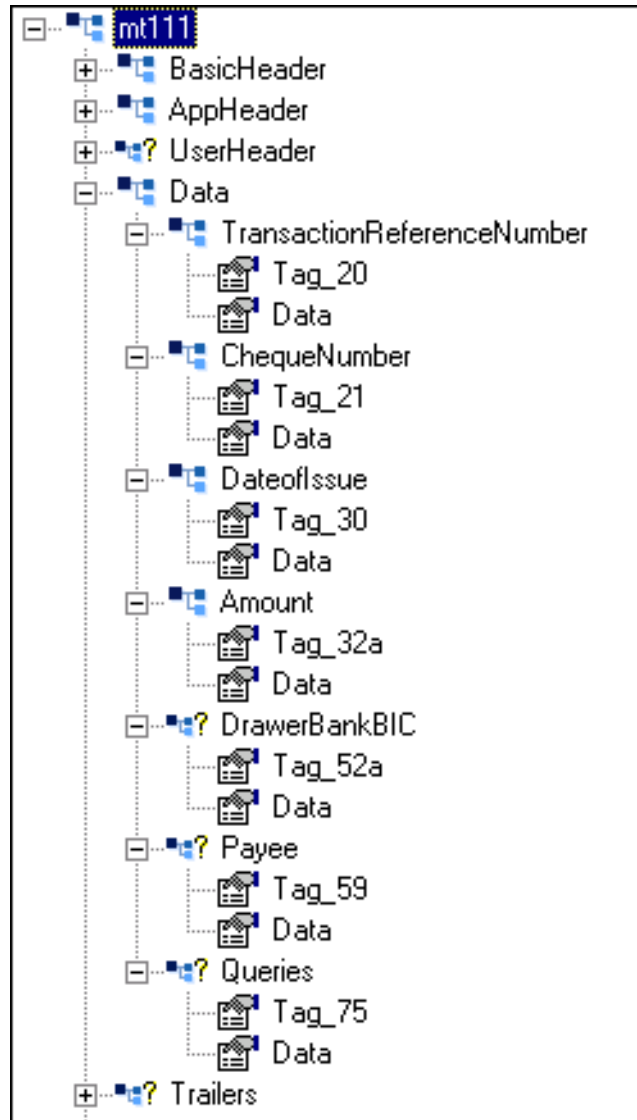
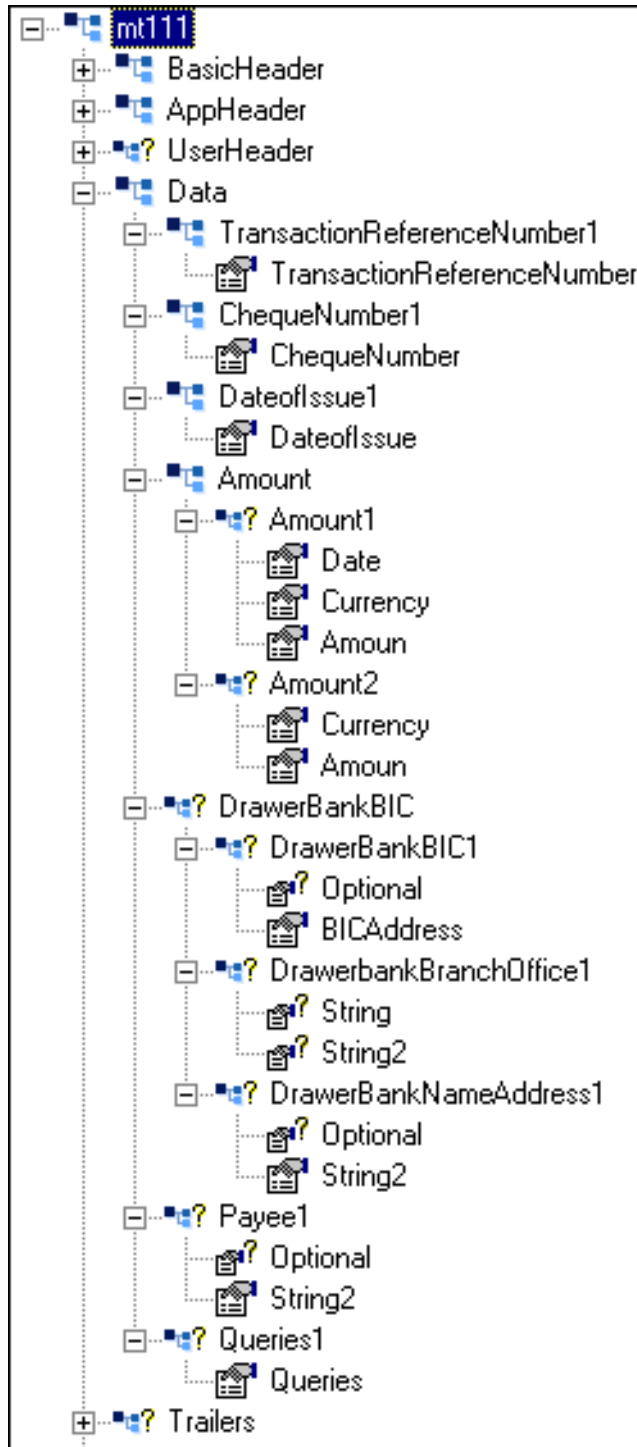


Figure 3 FULL Example - Java



1.4.3 Customizing the Templates

Currently SeeBeyond does not support the editing of pre-built Java ETDs. However, e*Gate offers a feature that allows you to convert existing Monk ETDs (.ssc files) to Java-enabled ETDs (.xsc files). This feature is the SSC Wizard.

To create a customized Java ETD

- 1 Create a corresponding Monk ETD, or use the Monk version of the Java ETD if available.
- 2 Customize the Monk ETD (.ssc file) using the e*Gate ETD Editor.
- 3 Convert the Monk ETD to a Java ETD using the e*Gate SSC Wizard.

When the conversion is done, you have three files:

- ♦ The original Monk ETD (.ssc file)—save this for future use
- ♦ The Java version of the ETD (.xsc file)
- ♦ A corresponding .jar file

If you need to make further changes to the ETD, make the changes in the .ssc file and run the conversion again.

For specific instructions on using the e*Gate ETD Editor or the SSC Wizard, refer to the *e*Gate Integrator User's Guide*.

1.5 Logical Replies

Note: *This section applies only to systems using the SWIFT Gold 2000 Certified e*Way.*

Every Event sent between SWIFTAlliance via CAS and the SWIFT Gold 2000 Certified e*Way is acknowledged by a logical reply. This confirms that the Event has been accepted. In addition, the SWIFT Transport Network sends a Delivery Report when the Event is delivered to the remote financial system. Other reports also can be produced.

The template files provided in the SWIFT ETD Library are the logical reply (SWIFT_LRP.*) and network acknowledgement (fin_ack.*) from the SWIFT network. These are returned by the SWIFT Gold 2000 Certified e*Way.

1.5.1 e*Gate Acknowledgment to SWIFT

If, and only if, e*Gate sends an acknowledgment to the e*Way (meaning it has stored the message successfully to some persistent store), the e*Way sends a logical reply to CAS, signalling a successful transmission. At this stage, the Event is deleted from the IQ.

If e*Gate cannot identify, translate or route an Event, it sends a negative acknowledgment to the e*Way, which stores the Event to a unique file in a configurable directory. The e*Way then sends a logical reply to CAS signifying that e*Gate has received the Event and has moved onto the next. This Event is then logged.

Application-level acknowledgments from the systems receiving SWIFT messages (or translated SWIFT messages) are returned via the outbound Event flow.

1.5.2 SWIFT Acknowledgment to e*Gate

After e*Gate has translated the Event into CAS message format it sends it to the outbound queue for the e*Way.

Note: *Only successfully translated Events are sent to the outbound e*Way.*

Successful messages

After the e*Way receives the Event, it stores it in an IQ. The Event is sent to CAS, which in turn, delivers it to the SWIFTAlliance.

SWIFTAlliance writes the Event to its outbound queue to the SWIFT Transport Network. It then sends the e*Way a logical reply signifying that the Event is stored in permanent memory. Only when the e*Way receives this successful logical reply does it signal the e*Gate system of a successful transmission by sending a *logical reply message*. In the server, this *logical reply message* can be either:

- Passed back to the originating system either in its default format or in a user-defined format
- Sent to a file or database

- Sent to the Alert Notifier

Note: *The acknowledgment from the SWIFT Transport Network (that the message has been delivered to the recipient) is not returned from this flow. It is delivered as an inbound report to the e*Gate system from the SWIFT Transport Network. This message is routed back to the originating system.*

Unsuccessful messages

If CAS or SWIFTAlliance is down, the message remains in the e*Gate system until both are operational again.

If SWIFTAlliance finds any semantic or syntactical errors (block 4 errors) in an Event, the Event is placed in the Correction queue for manual intervention. Once the Event has been corrected, it is sent in the normal way. A successful logical reply (LRP_SUCCESS) is sent to CAS (and hence to the e*Way) when the Event is placed in the Correction queue, even though the Event is not transmitted straight away. When the Event is sent to the SWIFT network, a report is sent to CAS and the e*Way.

Events with errors in blocks 1 or 2 cannot be handled by SWIFTAlliance and a negative logical reply (LRP_FAILURE) is sent back to CAS and the e*Way. The e*Way sends an error message and the original Event back to the e*Gate system. The e*Gate Monitor also registers and records this error and the e*Way also archives the Event to a unique file in a user-configurable directory.

Any errors in transmission are handled automatically and the Event re-sent until all Events are successfully delivered or result in an error condition.

The Event can be either:

- Passed back to the originating system, either in its default format or in a user-defined format
- Sent to a file or database
- Sent to the Alert Notifier—if desired, a user can be notified in real-time via e-mail or Web page of this event

1.6 Availability

The SWIFT ETD Library is available on the following operating systems:

- Windows 2000 SP 1 and Windows 2000 SP 2
- Windows NT 4.0 SP 6a
- Solaris 2.6, Solaris 7, and Solaris 8
- HP-UX 11.0 and HP-UX 11i
- AIX 4.3.3 and AIX 5.1
- Red Hat Linux 6.2
- Tru64 UNIX V4.0F, Tru64 UNIX V5.0A and Tru64 UNIX V5.1A
- OS/390 V2, R10

Japanese

- Windows 2000 SP 1 and Windows 2000 SP 2
- Windows NT 4.0 SP 6a
- Solaris 2.6, Solaris 7, and Solaris 8
- HP-UX 11.0

Installation

This chapter covers requirements and procedures for installing the SWIFT ETD Library on Windows NT/2000 and UNIX systems.

2.1 System Requirements

To use the SWIFT ETD Library, you must have the following:

- 1 A SeeBeyond e*Way Intelligent Adapter capable of connecting to SWIFTAlliance, such as:
 - ♦ e*Way Intelligent Adapter for SWIFT ADK
 - ♦ Batch e*Way Intelligent Adapter
 - ♦ SWIFT Gold 2000 Certified e*Way Intelligent Adapter
- 2 Approximately 120 MB of disk space to support `java_swift01` files.
- 3 Approximately 110 MB of disk space to support `java_swift02` files.

2.2 Procedure

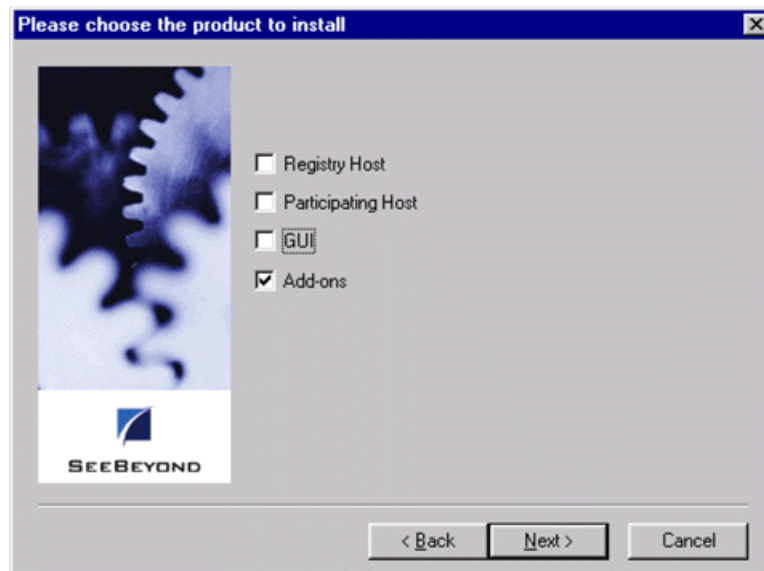
2.2.1 Windows Systems

Note: Be sure to install all of the template files in the directories suggested by the installation utility.

To Install the SWIFT ETD Library on Windows

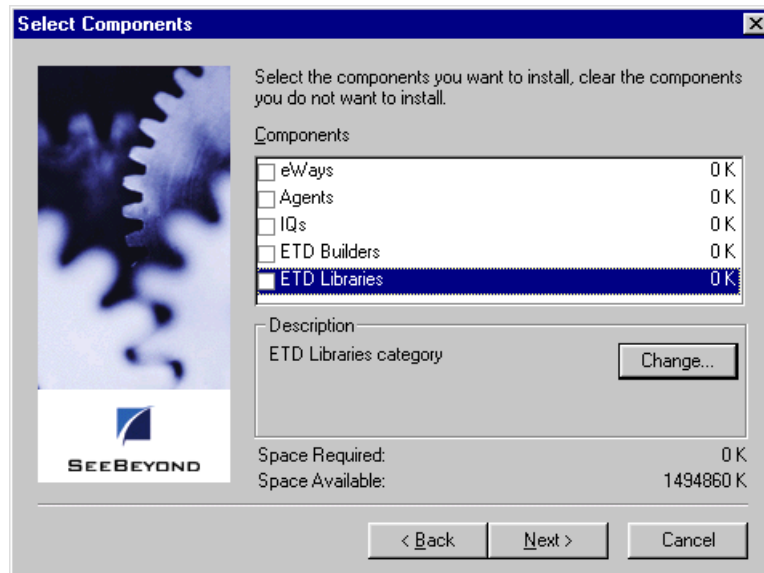
- 1 Log onto the workstation on which the SWIFT e*Way resides.
 - 2 Exit all Windows programs and disable any anti-virus applications before running the setup program.
 - 3 Insert the installation CD-ROM into the CD-ROM drive.
 - 4 Launch the setup program.
- A If the CD-ROM drive's Autorun feature is enabled, the setup program should launch automatically. Follow the on-screen instructions until the **Choose Product** dialog box appears (see Figure 4). Check **Add-ons**, then click **Next**.

Figure 4 Choose Product Dialog Box



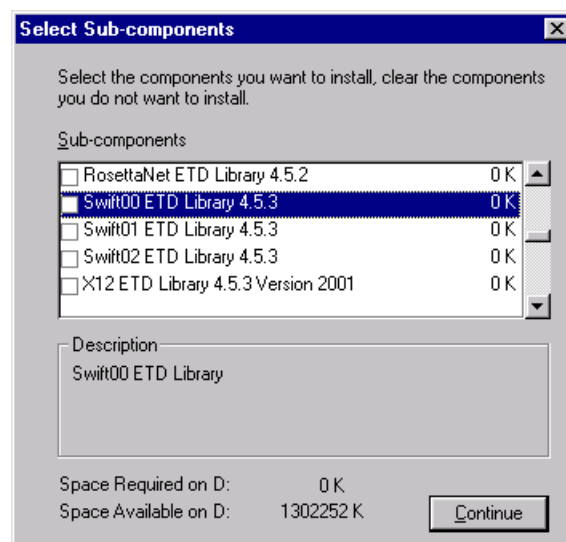
- B If the setup program does not launch automatically, use the Windows Explorer or the Control Panel's **Add/Remove Applications** feature to launch the following file on the CD-ROM drive (this bypasses the **Choose Product** dialog):
- ```
setup\addons\setup.exe
```
- 5 Follow the on-screen instructions until the **Select Components** dialog box appears (see Figure 5). Highlight—but do not check—**ETD Libraries** and then click **Change**.

**Figure 5** Select Components Dialog Box



- 6 When the **Select Sub-components** dialog box appears (see Figure 6), check either the Swift01 or Swift02 library (the Swift00 library is Monk only).

**Figure 6** Select Sub-components Dialog Box



**Note:** Installing the SWIFT 2001 or 2002 library installs both the Monk and Java versions. The combined size will be shown in the **Space Required** field.

- 7 Click **Continue**, and the **Select Components** dialog box reappears, showing your selection.
- 8 Click **Next** and continue with the installation.



## 2.2.2 UNIX Systems

*Note:* Be sure to install all of the template files in the directories suggested by the installation utility.

### To Install the SWIFT ETD Library on UNIX

- 1 Log in as **user** on the workstation containing the CD-ROM drive and, if necessary, mount the CD-ROM drive.
- 2 Insert the CD-ROM into the drive.
- 3 At the shell prompt, type:  
**cd /cdrom**
- 4 Start the installation script by typing:  
**setup.sh**  
A menu of options appears.
- 5 Select the **e\*Gate Addon Applications** option.
- 6 Follow the rest of the on-screen instructions to install the SWIFT template files.

## 2.3 Files and Directories

Installing the SWIFT ETD Library templates places files within the e\*Gate directory tree, and commits them to the default schema on the Registry Host. The Java library files are placed in the following path:

```
eGate\Server\registry\repository\default\etd\templates
 \Swift<yy>\<type>\
```

where *yy* is **01** or **02**, and *type* is either **full** or **slim**. Both **full** and **slim** versions are installed automatically for the selected library year. The file names are identical for the **full** and **slim** versions, so they must be located in separate directories.

The Message Type template files comprise a set of three files for each SWIFT Message Type. Each set has the form:

```
mt<nnn>.jar
mt<nnn>.ssc
mt<nnn>.xsc
```

where *nnn* represents the three-digit SWIFT Message Type number. The full set of SWIFT Message Types for which ETDs are installed is listed in [Chapter 3](#).

In addition, sets of **fin\_ack** and **SWIFT\_LRP** files also are installed in these same directories for use as Logical Reply templates (see [Logical Replies](#) on page 11):

**Table 1** Installed Files

| Java Library Files |                                                                                                                                           |
|--------------------|-------------------------------------------------------------------------------------------------------------------------------------------|
| \Swift<yy>\full\   | fin_ack.jar<br>fin_ack.ssc<br>fin_ack.xsc<br>mt<nnn>.jar<br>mt<nnn>.ssc<br>mt<nnn>.xsc<br>SWIFT_LRP.jar<br>SWIFT_LRP.ssc<br>SWIFT_LRP.xsc |
| \Swift<yy>\slim\   | fin_ack.jar<br>fin_ack.ssc<br>fin_ack.xsc<br>mt<nnn>.jar<br>mt<nnn>.ssc<br>mt<nnn>.xsc<br>SWIFT_LRP.jar<br>SWIFT_LRP.ssc<br>SWIFT_LRP.xsc |

where *yy* = library year (**01** or **02**)  
and *nnn* = SWIFT Message Type number.

# The SWIFT ETD Library

This chapter describes, and provides a cross-reference for, the SWIFT ETD Library.

---

## 3.1 SWIFT Message Types

SWIFT groups message types into ten categories, as shown below. The tenth category comprises a group of messages that is common to the other nine categories.

### Category 1: Customer Payments and Cheques

- see [MT 1xx Messages](#) on page 20

### Category 2: Financial Institution Transfers

- see [MT 2xx Messages](#) on page 21

### Category 3: Treasury Markets - Foreign Exchange & Derivatives

- see [MT 3xx Messages](#) on page 22

### Category 4: Collections and Cash Letters

- see [MT 4xx Messages](#) on page 23

### Category 5: Securities Markets

- see [MT 5xx Messages](#) on page 24

### Category 6: Treasury Markets - Precious Metals & Syndications

- see [MT 6xx Messages](#) on page 27

### Category 7: Documentary Credits & Guarantees

- see [MT 7xx Messages](#) on page 28

### Category 8: Travellers Cheques

- see [MT 8xx Messages](#) on page 29

### Category 9: Cash Management & Customer Status

- see [MT 9xx Messages](#) on page 30

### Category n: Common Group Messages

- see [MT n9x Messages](#) on page 31

### 3.1.1 MT 1xx Messages

#### Customer Payments & Cheques

| SWIFT Message Type | Description                                                 |
|--------------------|-------------------------------------------------------------|
| MT 100             | Customer Transfer                                           |
| MT 101             | Request for Transfer                                        |
| MT 102             | Multiple Customer Credit Transfer                           |
| MT 103             | Single Customer Credit Transfer                             |
| MT 104             | Customer Direct Debit                                       |
| MT 105             | EDIFACT Envelope                                            |
| MT 106             | EDIFACT Envelope                                            |
| MT 107             | General Direct Debit Message                                |
| MT 110             | Advice of Cheque(s)                                         |
| MT 111             | Request for Stop Payment of a Cheque                        |
| MT 112             | Status of a Request for Stop Payment of a Cheque            |
| MT 121             | EDIFACT FINPAY (2001 Only)                                  |
| MT 190             | Advice of Charges, Interest and Other Adjustments           |
| MT 191             | Request for Payment of Charges, Interest and Other Expenses |
| MT 192             | Request for Cancellation                                    |
| MT 195             | Queries                                                     |
| MT 196             | Answers                                                     |
| MT 198             | Proprietary Message                                         |
| MT 199             | Free Format Message                                         |

## 3.1.2 MT 2xx Messages

### Financial Institution Transfers

| SWIFT Message Type | Description                                                 |
|--------------------|-------------------------------------------------------------|
| MT 200             | Financial Institution Transfer for its Own Account          |
| MT 201             | Multiple Financial Institution Transfer for its Own Account |
| MT 202             | General Financial Institution Transfer                      |
| MT 203             | Multiple General Financial Institution Transfer             |
| MT 204             | Financial Markets Direct Debit Message                      |
| MT 205             | Financial Institution Transfer Execution                    |
| MT 206             | Cheque Truncation Message (2001 Only)                       |
| MT 207             | Request for Financial Institution Transfer                  |
| MT 210             | Notice to Receive                                           |
| MT 256             | Advice of Non-Payment of Cheques                            |
| MT 290             | Advice of Charges, Interest and Other Adjustments           |
| MT 291             | Request for Payment of Charges, Interest and Other Expenses |
| MT 292             | Request for Cancellation                                    |
| MT 293             | Information Service Message                                 |
| MT 295             | Queries                                                     |
| MT 296             | Answers                                                     |
| MT 298             | Proprietary Message                                         |
| MT 299             | Free Format Message                                         |

### 3.1.3 MT 3xx Messages

Treasury Markets, Foreign Exchange, Money Markets & Derivatives

| SWIFT Message Type | Description                                                                 |
|--------------------|-----------------------------------------------------------------------------|
| MT 300             | Foreign Exchange Confirmation                                               |
| MT 303             | Forex/Currency Option Allocation Instruction                                |
| MT 304             | Advice/Instruction of a Third Party Deal                                    |
| MT 305             | Foreign Currency Option Confirmation                                        |
| MT 306             | Foreign Currency Option                                                     |
| MT 307             | Advice/Instruction of a Third Party FX Deal (2002 Only)                     |
| MT 308             | Instruction for Gross/Net Settlement of Third Party FX Deals (2002 Only)    |
| MT 320             | Fixed Loan/Deposit Confirmation                                             |
| MT 321             | Instruction to Settle a Third Party Loan/Deposit (2002 Only)                |
| MT 330             | Call/Notice Loan/Deposit Confirmation                                       |
| MT 340             | Forward Rate Agreement Confirmation                                         |
| MT 341             | Forward Rate Agreement Settlement Confirmation                              |
| MT 350             | Advice of Loan/Deposit Interest Payment                                     |
| MT 360             | Single Currency Interest Rate Derivative Confirmation                       |
| MT 361             | Cross Currency Interest Rate Swap Confirmation                              |
| MT 362             | Interest Rate Reset/Advice of Payment                                       |
| MT 364             | Single Currency Interest Rate Derivative Termination/Recouping Confirmation |
| MT 365             | Single Currency Interest Rate Swap Termination/Recouping Confirmation       |
| MT 380             | Foreign Exchange Order (2002 Only)                                          |
| MT 381             | Foreign Exchange Order Confirmation (2002 Only)                             |
| MT 390             | Advice of Charges, Interest and Other Adjustments                           |
| MT 391             | Request for Payment of Charges, Interest and Other Expenses                 |
| MT 392             | Request for Cancellation                                                    |
| MT 395             | Queries                                                                     |
| MT 396             | Answers                                                                     |
| MT 398             | Proprietary Message                                                         |
| MT 399             | Free Format Message                                                         |

### 3.1.4 MT 4xx Messages

#### Collections & Cash Letters

| <b>SWIFT Message Type</b> | <b>Description</b>                                          |
|---------------------------|-------------------------------------------------------------|
| MT 400                    | Collections: Advice of Payment                              |
| MT 405                    | Collections: Clean Collection                               |
| MT 410                    | Collections: Acknowledgment                                 |
| MT 412                    | Collections: Advice of Acceptance                           |
| MT 416                    | Collections: Advice of Non-Payment/Non-Acceptance           |
| MT 420                    | Collections: Tracer                                         |
| MT 422                    | Collections: Advice of Fate and Request for Instructions    |
| MT 430                    | Collections: Amendment of Instructions                      |
| MT 450                    | Cash Letters: Cash Letter Credit Advice                     |
| MT 455                    | Cash Letters: Cash Letter Credit Adjustment Advice          |
| MT 456                    | Cash Letters: Advice of Dishonor                            |
| MT 490                    | Advice of Charges, Interest and Other Adjustments           |
| MT 491                    | Request for Payment of Charges, Interest and Other Expenses |
| MT 492                    | Request for Cancellation                                    |
| MT 495                    | Queries                                                     |
| MT 496                    | Answers                                                     |
| MT 498                    | Proprietary Message                                         |
| MT 499                    | Free Format Message                                         |

### 3.1.5 MT 5xx Messages

#### Securities Markets

| SWIFT Message Type | Description                                              |
|--------------------|----------------------------------------------------------|
| MT 500             | Instruction to Register (2002 Only)                      |
| MT 501             | Confirmation of Registration or Modification (2002 Only) |
| MT 502             | Order to Buy or Sell                                     |
| MT 503             | Collateral Claim                                         |
| MT 504             | Collateral Proposal                                      |
| MT 505             | Collateral Substitution                                  |
| MT 506             | Collateral and Exposure Statement                        |
| MT 507             | Collateral Status and Processing Advice                  |
| MT 508             | Intra-Position Advice                                    |
| MT 509             | Trade Status Message                                     |
| MT 510             | Registration Status and Processing Advice (2002 Only)    |
| MT 512             | Securities Trade Confirmation (2001 Only)                |
| MT 513             | Client Advice of Execution                               |
| MT 514             | Trade Allocation Instruction                             |
| MT 515             | Client Confirmation of Purchase or Sale                  |
| MT 516             | Securities Loan Confirmation                             |
| MT 517             | Trade Confirmation Affirmation                           |
| MT 518             | Market-Side Securities Trade Confirmation                |
| MT 519             | Modification of Client Details (2002 Only)               |
| MT 520             | Receive Free (2001 Only)                                 |
| MT 521             | Receive Against Payment (2001 Only)                      |
| MT 522             | Deliver Free (2001 Only)                                 |
| MT 523             | Deliver Against Payment (2001 Only)                      |
| MT 524             | Intra-Position Instruction                               |
| MT 526             | General Securities Lending/Borrowing Message             |
| MT 527             | Triparty Collateral Instruction                          |
| MT 528             | ETC Client-Side Settlement Instruction                   |
| MT 529             | ETC Market-Side Settlement Instruction                   |
| MT 530             | Confirmation of Receipt Free (2001 Only)                 |
| MT 531             | Confirmation of Receipt Against Payment (2001 Only)      |
| MT 532             | Confirmation of Delivery Free (2001 Only)                |
| MT 533             | Confirmation of Delivery Against Payment (2001 Only)     |
| MT 534             | Notice of Settlement Problem (2001 Only)                 |



| SWIFT Message Type | Description                                                 |
|--------------------|-------------------------------------------------------------|
| MT 535             | Statement of Holdings                                       |
| MT 536             | Statement of Transactions                                   |
| MT 537             | Statement of Pending Transactions                           |
| MT 538             | Statement of Intra-Position Advice                          |
| MT 539             | Advice of Receipt/Delivery of Securities (2001 Only)        |
| MT 540             | Receive Free                                                |
| MT 541             | Receive Against Payment Instruction                         |
| MT 542             | Deliver Free                                                |
| MT 543             | Deliver Against Payment Instruction                         |
| MT 544             | Receive Free Confirmation                                   |
| MT 545             | Receive Against Payment Confirmation                        |
| MT 546             | Deliver Free Confirmation                                   |
| MT 547             | Deliver Against Payment Confirmation                        |
| MT 548             | Settlement Status and Processing Advice                     |
| MT 549             | Request for Statement/Status Advice                         |
| MT 550             | Notice of Rights (2001 Only)                                |
| MT 551             | Notice of Event (2001 Only)                                 |
| MT 552             | Notice of Offer or Privilege (2001 Only)                    |
| MT 553             | Instruction to a Custodian (2001 Only)                      |
| MT 554             | Advice of Money Income (2001 Only)                          |
| MT 555             | Advice of Income in the Form of Securities (2001 Only)      |
| MT 556             | Advice of Redemption (2001 Only)                            |
| MT 557             | Advice of Securities Proceeds (2001 Only)                   |
| MT 558             | Triparty Collateral Status and Processing Advice            |
| MT 559             | Paying Agent's Claim                                        |
| MT 560             | Notice of Bond or Shareholders' Meeting                     |
| MT 561             | Proxy or Authorization and Instructions to Vote (2001 Only) |
| MT 562             | Corporate Action Status Report (2001 Only)                  |
| MT 563             | Corporate Action Confirmation (2001 Only)                   |
| MT 564             | Corporate Action Notification                               |
| MT 565             | Corporate Action Instruction                                |
| MT 566             | Corporate Action Confirmation                               |
| MT 567             | Corporate Action Status and Processing Advice               |
| MT 568             | Corporate Action Narrative (2001 Only)                      |
| MT 569             | Triparty Collateral and Exposure Statement                  |
| MT 570             | Request for Statement (2001 Only)                           |

| <b>SWIFT Message Type</b> | <b>Description</b>                                          |
|---------------------------|-------------------------------------------------------------|
| MT 571                    | Statement of Holdings (2001 Only)                           |
| MT 572                    | Statement of Transactions (2001 Only)                       |
| MT 573                    | Statement of Pending Transactions (2001 Only)               |
| MT 574_IRSLST             | IRS 1441 NRA (IRSLST) (2002 Only)                           |
| MT 574_W8BENO             | IRS 1441 NRA (W8BENO) (2002 Only)                           |
| MT 575                    | Statement of Combined Activity                              |
| MT 576                    | Statement of Open Orders                                    |
| MT 577                    | Statement of Numbers                                        |
| MT 578                    | Statement of Allegement                                     |
| MT 579                    | Certificate Numbers                                         |
| MT 580                    | Instruction to an International Clearing System (2001 Only) |
| MT 581                    | Collateral Adjustment Message                               |
| MT 582                    | Reimbursement Claim or Advice                               |
| MT 583                    | Depot Management Advice (2001 Only)                         |
| MT 584                    | Statement of ETC Pending Trades                             |
| MT 586                    | Statement of Settlement Allegements                         |
| MT 587                    | Depositary Receipt Instruction                              |
| MT 588                    | Depositary Receipt Confirmation                             |
| MT 589                    | Depositary Receipt Status and Processing Advice             |
| MT 590                    | Advice of Charges, Interest and Other Adjustments           |
| MT 591                    | Request for Payment of Charges, Interest and Other Expenses |
| MT 592                    | Request for Cancellation                                    |
| MT 595                    | Queries                                                     |
| MT 596                    | Answers                                                     |
| MT 598                    | Proprietary Message                                         |
| MT 599                    | Free Format Message                                         |

### 3.1.6 MT 6xx Messages

#### Treasury Markets, Precious Metals

| <b>SWIFT Message Type</b> | <b>Description</b>                                          |
|---------------------------|-------------------------------------------------------------|
| MT 600                    | Precious Metal Trade Confirmation                           |
| MT 601                    | Precious Metal Option Confirmation                          |
| MT 604                    | Precious Metal Transfer/Delivery Order                      |
| MT 605                    | Precious Metal Notice to Receive                            |
| MT 606                    | Precious Metal Debit Advice                                 |
| MT 607                    | Precious Metal Credit Advice                                |
| MT 608                    | Statement of a Metal Account                                |
| MT 609                    | Statement of Metal Contracts                                |
| MT 643                    | Notice of Drawdown/Renewal                                  |
| MT 644                    | Advice of Rate and Amount Fixing                            |
| MT 645                    | Notice of Fee Due                                           |
| MT 646                    | Payment of Principal and/or Interest                        |
| MT 649                    | General Syndicated Facility Message                         |
| MT 690                    | Advice of Charges, Interest and Other Adjustments           |
| MT 691                    | Request for Payment of Charges, Interest and Other Expenses |
| MT 692                    | Request for Cancellation                                    |
| MT 695                    | Queries                                                     |
| MT 696                    | Answers                                                     |
| MT 698                    | Proprietary Message                                         |
| MT 699                    | Free Format Message                                         |

### 3.1.7 MT 7xx Messages

#### Treasury Markets, Syndication

| SWIFT Message Type | Description                                                 |
|--------------------|-------------------------------------------------------------|
| MT 700             | Issue of a Documentary Credit                               |
| MT 701             | Issue of a Documentary Credit                               |
| MT 705             | Pre-Advice of a Documentary Credit                          |
| MT 707             | Amendment to a Documentary Credit                           |
| MT 710             | Advice of a Third Bank's Documentary Credit                 |
| MT 711             | Advice of a Third Bank's Documentary Credit                 |
| MT 720             | Transfer of a Documentary Credit                            |
| MT 721             | Transfer of a Documentary Credit                            |
| MT 730             | Acknowledgment                                              |
| MT 732             | Advice of Discharge                                         |
| MT 734             | Advice of Refusal                                           |
| MT 740             | Authorization to Reimburse                                  |
| MT 742             | Reimbursement Claim                                         |
| MT 747             | Amendment to an Authorization to Reimburse                  |
| MT 750             | Advice of Discrepancy                                       |
| MT 752             | Authorization to Pay, Accept or Negotiate                   |
| MT 754             | Advice of Payment/Acceptance/Negotiation                    |
| MT 756             | Advice of Reimbursement or Payment                          |
| MT 760             | Guarantee                                                   |
| MT 767             | Guarantee Amendment                                         |
| MT 768             | Acknowledgment of a Guarantee Message                       |
| MT 769             | Advice of Reduction or Release                              |
| MT 790             | Advice of Charges, Interest and Other Adjustments           |
| MT 791             | Request for Payment of Charges, Interest and Other Expenses |
| MT 792             | Request for Cancellation                                    |
| MT 795             | Queries                                                     |
| MT 796             | Answers                                                     |
| MT 798             | Proprietary Message                                         |
| MT 799             | Free Format Message                                         |

### 3.1.8 MT 8xx Messages

#### Travellers Cheques

| <b>SWIFT Message Type</b> | <b>Description</b>                                          |
|---------------------------|-------------------------------------------------------------|
| MT 800                    | T/C Sales and Settlement Advice [Single]                    |
| MT 801                    | T/C Multiple Sales Advice                                   |
| MT 802                    | T/C Settlement Advice                                       |
| MT 810                    | T/C Refund Request                                          |
| MT 812                    | T/C Refund Authorization                                    |
| MT 813                    | T/C Refund Confirmation                                     |
| MT 820                    | Request for T/C Stock                                       |
| MT 821                    | T/C Inventory Addition                                      |
| MT 822                    | Trust Receipt Acknowledgment                                |
| MT 823                    | T/C Inventory Transfer                                      |
| MT 824                    | T/C Inventory Destruction/Cancellation Notice               |
| MT 890                    | Advice of Charges, Interest and Other Adjustments           |
| MT 891                    | Request for Payment of Charges, Interest and Other Expenses |
| MT 892                    | Request for Cancellation                                    |
| MT 895                    | Queries                                                     |
| MT 896                    | Answers                                                     |
| MT 898                    | Proprietary Message                                         |
| MT 899                    | Free Format Message                                         |

### 3.1.9 MT 9xx Messages

#### Cash Management & Customer Status

| <b>SWIFT Message Type</b> | <b>Description</b>                                          |
|---------------------------|-------------------------------------------------------------|
| MT 900                    | Confirmation of Debit                                       |
| MT 910                    | Confirmation of Credit                                      |
| MT 920                    | Request Message                                             |
| MT 935                    | Rate Change Advice                                          |
| MT 940                    | Customer Statement Message                                  |
| MT 941                    | Balance Report                                              |
| MT 942                    | Interim Transaction Report                                  |
| MT 950                    | Statement Message                                           |
| MT 970                    | Netting Statement                                           |
| MT 971                    | Netting Balance Report                                      |
| MT 972                    | Netting Interim Statement                                   |
| MT 973                    | Netting Request Message                                     |
| MT 985                    | Status Inquiry                                              |
| MT 986                    | Status Report                                               |
| MT 990                    | Advice of Charges, Interest and Other Adjustments           |
| MT 991                    | Request for Payment of Charges, Interest and Other Expenses |
| MT 992                    | Request for Cancellation                                    |
| MT 995                    | Queries                                                     |
| MT 996                    | Answers                                                     |
| MT 998                    | Proprietary Message                                         |
| MT 999                    | Free Format Message                                         |

### 3.1.10 MT n9x Messages

#### Common Group Messages

| <b>SWIFT<br/>Message<br/>Type</b> | <b>Description</b>                                          |
|-----------------------------------|-------------------------------------------------------------|
| MT n90                            | Advice of Charges, Interest and Other Adjustments           |
| MT n91                            | Request for Payment of Charges, Interest and Other Expenses |
| MT n92                            | Request for Cancellation                                    |
| MT n95                            | Queries                                                     |
| MT n96                            | Answers                                                     |
| MT n98                            | Proprietary Message                                         |
| MT n99                            | Free Format Message                                         |

Where n = 1 through 9.

# Index

## A

acknowledgement (logical reply) 11  
 Acknowledgment 28  
 Acknowledgment of  
   Guarantee Message 28  
   Trust Receipt 29  
 Advice of  
   Charges, Interest and Other Adjustments 20, 21,  
     22, 23, 26, 27, 28, 29, 30, 31  
   Cheque 20  
   Discharge 28  
   Discrepancy 28  
   Income in the Form of Securities 25  
   Loan/Deposit Interest Payment 22  
   Money Income 25  
   Non-Payment of Cheques 21  
   Payment/Acceptance/Negotiation 28  
   Rate and Amount Fixing 27  
   Receipt/Delivery of Securities 25  
   Redemption 25  
   Reduction or Release 28  
   Refusal 28  
   Reimbursement Claim 26  
   Reimbursement or Payment 28  
   Securities Proceeds 25  
   Third Bank's Documentary Credit 28  
 Advice/Instruction of a  
   Third Party Deal 22  
   Third Party FX Deal 22  
 Alert Notifier 12  
 Allegement Statement 26  
 Amendment to  
   Authorization to Reimburse 28  
   Documentary Credit 28  
 Answers 20, 21, 22, 23, 26, 27, 28, 29, 30, 31  
 Authorization to  
   Pay, Accept or Negotiate 28  
   Reimburse 28  
 Autorun 15

## B

Balance Report 30  
 Bond/Shareholders' Meeting Notice 25

Buy/Sell Order 24

## C

Call/Notice Loan/Deposit Confirmation 22  
 Cancellation  
   Request 20, 22, 23, 26, 27, 28, 29, 30, 31  
 CAS 11  
 Cash Letters  
   Advice of Dishonor 23  
   Cash Letter Credit Adjustment Advice 23  
   Cash Letter Credit Advice 23  
 CD-ROM 15, 17  
 Certificate Numbers 26  
 Cheque  
   Advice of 20  
   Advice of Non-Payment 21  
   Stop Payment Request 20  
   Stop Payment Status 20  
   Truncation Message 21  
 Claim  
   Collateral 24  
   Paying Agent's 25  
   Reimbursement 26, 28  
 Client Advice of Execution 24  
 Client Confirmation of Purchase or Sale 24  
 Collateral  
   Adjustment Message 26  
   Claim 24  
   Proposal 24  
   Status and Processing Advice 24  
   Substitution 24  
 Collateral and Exposure Statement 24  
 Collections  
   Acknowledgment 23  
   Advice of Acceptance 23  
   Advice of Fate and Request for Instructions 23  
   Advice of Non-Payment/Non-Acceptance 23  
   Advice of Payment 23  
   Amendment of Instructions 23  
   Clean Collection 23  
   Tracer 23  
 Combined Activity Statement 26  
 Confirmation of  
   Call/Notice Loan/Deposit 22  
   Corporate Action 25  
   Credit 30  
   Debit 30  
   Deliver Against Payment 25  
   Deliver Free 25  
   Delivery Against Payment 24  
   Delivery Free 24  
   Depository Receipt 26  
   Fixed Loan/Deposit 22



- Foreign Currency Option 22
  - Foreign Exchange 22
  - Foreign Exchange Order 22
  - Forward Rate Agreement 22
  - Forward Rate Agreement Settlement 22
  - Market-Side Securities Trade 24
  - Precious Metal Option 27
  - Precious Metal Trade 27
  - Purchase or Sale 24
  - Receipt Against Payment 24
  - Receipt Free 24
  - Receive Against Payment 25
  - Receive Free 25
  - Securities Loan 24
  - Securities Trade 24
  - Confirmation of Registration or Modification 24
  - Corporate Action
    - Confirmation 25
    - Instruction 25
    - Narrative 25
    - Notification 25
    - Status and Processing Advice 25
    - Status Report 25
  - Credit
    - Confirmation 30
    - Transfer 20
  - Cross Currency Interest Rate Swap Confirmation 22
  - Customer
    - Direct Debit 20
    - Statement Message 30
    - Transfer 20
- D**
- Debit Confirmation 30
  - Deliver Against Payment 24
    - Confirmation 25
    - Instruction 25
  - Deliver Free 24, 25
    - Confirmation 25
  - Delivery Against Payment Confirmation 24
  - Delivery Free Confirmation 24
  - Delivery Report 11
  - Depository Receipt
    - Confirmation 26
    - Instruction 26
    - Status and Processing Advice 26
  - Depot Management Advice 26
  - Discharge, Advice of 28
  - Discrepancy, Advice of 28
  - Documentary Credit
    - Advice of Third Bank's 28
    - Amendment 28
    - Issue 28
  - Pre-Advice 28
  - Transfer 28
  - Drawdown/Renewal Notice 27
- E**
- e\*Way 6
  - EDIFACT
    - Envelope 20
    - FINPAY 20
  - ETC
    - Client-Side Settlement Instruction 24
    - Market-Side Settlement Instruction 24
    - Pending Trades Statement 26
  - Event Type Definition (ETD) 6
    - full version 7
    - slim version 7
- F**
- Fee Due Notice 27
  - field tag 6
  - Financial Institution
    - Transfer 21
    - Transfer Execution 21
    - Transfer for its Own Account 21
    - Transfer Request 21
  - Financial Markets Direct Debit Message 21
  - Fixed Loan/Deposit Confirmation 22
  - Foreign Currency
    - Option 22
    - Option Confirmation 22
  - Foreign Exchange
    - Confirmation 22
    - Order 22
    - Order Confirmation 22
  - Forex/Currency Option Allocation Instruction 22
  - Forward Rate Agreement
    - Confirmation 22
    - Settlement Confirmation 22
  - Free Format Message 20, 21, 22, 23, 26, 27, 28, 29, 30, 31
    - full version 7
- G**
- General
    - Direct Debit Message 20
    - Financial Institution Transfer 21
    - Securities Lending/Borrowing Message 24
    - Syndicated Facility Message 27
  - Guarantee 28
    - Amendment 28

Message Acknowledgment 28

## H

header block 6

Holdings Statement 25, 26

## I

Information Service Message 21

installation procedures

UNIX systems 17

Windows systems 15

installation requirements 14

InstallShield 15

Instruction for Gross/Net Settlement of Third Party

FX Deals 22

Instruction to

Custodian 25

International Clearing System 26

Register 24

Settle a Third Party Loan/Deposit 22

Intelligent Adapter 6

Interest Rate Reset/Advice of Payment 22

Interim Transaction Report 30

Intra-Position

Advice 24

Advice Statement 25

Instruction 24

Inventory Addition 29

IRS 1441 NRA

(IRSLST) 26

(W8BENO) 26

Issue of a Documentary Credit 28

## L

logical reply (acknowledgement) 11

LRP\_FAILURE 12

LRP\_SUCCESS 12

## M

Market-Side Securities Trade Confirmation 24

Message

Categories 19

Cheque Transaction 21

Collateral Adjustment 26

Customer Statement 30

Financial Markets Direct Debit 21

Free Format 20, 21, 22, 23, 26, 27, 28, 29, 30, 31

General Direct Debit 20

General Syndicated Facility 27

Netting Request 30

Proprietary 20, 21, 22, 23, 26, 27, 28, 29, 30, 31

Statement 30

Trade Status 24

Types 18, 19

Message Types 7

message validation 7

Modification of Client Details 24

Multiple

Customer Credit Transfer 20

Financial Institution Transfer for its Own  
Account 21

General Financial Institution Transfer 21

## N

Netting

Balance Report 30

Interim Statement 30

Request Message 30

Statement 30

Notice of

Bond or Shareholders' Meeting 25

Corporate Action 25

Drawdown/Renewal 27

Event 25

Fee Due 27

Offer or Privilege 25

Rights 25

Settlement Problem 24

T/C Inventory Destruction/Cancellation 29

Notice to Receive 21

Numbers Statement 26

## O

Offer/Privilege Notice 25

Open Orders Statement 26

Order to Buy or Sell 24

## P

Paying Agent's Claim 25

Payment Advice 28

Payment of Principal and/or Interest 27

Pending Transactions Statement 25, 26

Pre-Advice of a Documentary Credit 28

Precious Metal

Account Statement 27

Contracts Statement 27

Credit Advice 27

Debit Advice 27

Notice to Receive 27

- Option Confirmation 27
- Trade Confirmation 27
- Transfer/Delivery Order 27
- Principal and/or Interest Payment 27
- Proposal
  - Collateral 24
- Proprietary Message 20, 21, 22, 23, 26, 27, 28, 29, 30, 31
- Proxy or Authorization and Instructions to Vote 25

## Q

- Queries 20, 21, 22, 23, 26, 27, 28, 29, 30, 31

## R

- Rate Change Advice 30
- Receipt Against Payment Confirmation 24
- Receipt/Delivery of Securities Advice 25
- Receive Against Payment 24
  - Confirmation 25
  - Instruction 25
- Receive Free 24, 25
  - Confirmation 25
- Refusal, Advice of 28
- Registration Status and Processing Advice 24
- Reimbursement
  - Advice 28
  - Authorization 28
  - Authorization Amendment 28
  - Claim 28
  - Claim or Advice 26
- Request for
  - Cancellation 20, 21, 22, 23, 26, 27, 28, 29, 30, 31
  - Financial Institution Transfer 21
  - Payment of Charges, Interest and Other Expenses 20, 21, 22, 23, 26, 27, 28, 29, 30, 31
  - Statement 25
  - Statement/Status Advice 25
  - Stop Payment of a Cheque 20
  - T/C Stock 29
  - Transfer 20
- Request Message 30

## S

- Securities
  - General Lending/Borrowing Message 24
  - Loan Confirmation 24
  - Market-Side Trade Confirmation 24
  - Trade Confirmation 24
- Settlement
  - Allegements Statement 26

- ETC Client-Side Instruction 24
- ETC Market-Side Instruction 24
- Problem Notice 24
- Status and Processing Advice 25
- Single Currency
  - Interest Rate Derivative Confirmation 22
  - Interest Rate Derivative Termination/Recouping Confirmation 22
  - Interest Rate Swap Termination/Recouping Confirmation 22
- Single Customer Credit Transfer 20
  - slim version 7
- Statement Message 30
- Statement of
  - Allegation 26
  - Combined Activity 26
  - ETC Pending Trades 26
  - Holdings 25, 26
  - Intra-Position Advice 25
  - Numbers 26
  - Open Orders 26
  - Pending Transactions 25, 26
  - Precious Metal Account 27
  - Precious Metal Contracts 27
  - Settlement Allegements 26
  - Transactions 25, 26
  - Triparty Collateral and Exposure 25
- Statement/Status Advice Request 25
- Status
  - Inquiry 30
  - Report 30
- Status of a Request for Stop Payment of a Cheque 20
- SWIFT
  - Gold 2000 Certified e\*Way 11
  - Message Categories 19
  - Message Types 18, 19
  - Transport Network 11
- SWIFTAlliance 11, 12
- syntax checking 7

## T

- T/C 29
  - Inventory Destruction/Cancellation Notice 29
  - Inventory Transfer 29
  - Multiple Sales Advice 29
  - Refund Authorization 29
  - Refund Confirmation 29
  - Refund Request 29
  - Sales and Settlement Advice 29
  - Settlement Advice 29
  - Stock Request 29
- template versions
  - full 7

## Index

- slim 7
- text block 6
- Trade
  - Allocation Instruction 24
  - Confirmation Affirmation 24
  - Securities Confirmation 24
  - Status Message 24
- Trailer block 6
- Transactions Statement 25, 26
- Transfer
  - Customer 20
  - Customer Credit 20
  - Documentary Credit 28
  - Financial Institution 21
  - General Financial Institution 21
  - Multiple General Financial Institution 21
  - Request 20
  - T/C Inventory 29
- Triparty
  - Collateral and Exposure Statement 25
  - Collateral Instruction 24
  - Collateral Status and Processing Advice 25
- Trust Receipt Acknowledgment 29

## U

- UNIX installation 17

## V

- validation 7

## W

- Windows installation 15