

***SeeBeyond™ eBusiness Integration Suite***

# **e\*Gate Integrator Alert Agent User's Guide**

*Release 4.5.4*



The information contained in this document is subject to change and is updated periodically to reflect changes to the applicable software. Although every effort has been made to ensure the accuracy of this document, SeeBeyond Technology Corporation (SeeBeyond) assumes no responsibility for any errors that may appear herein. The software described in this document is furnished under a License Agreement and may be used or copied only in accordance with the terms of such License Agreement. Printing, copying, or reproducing this document in any fashion is prohibited except in accordance with the License Agreement. The contents of this document are designated as being confidential and proprietary; are considered to be trade secrets of SeeBeyond; and may be used only in accordance with the License Agreement, as protected and enforceable by law. SeeBeyond assumes no responsibility for the use or reliability of its software on platforms that are not supported by SeeBeyond.

e\*Gate, e\*Index, e\*Insight, e\*Way, e\*Xchange, e\*Xpressway, iBridge, IQ, SeeBeyond, and the SeeBeyond logo are trademarks and service marks of SeeBeyond Technology Corporation. All other brands or product names are trademarks of their respective companies

© 1999–2002 by SeeBeyond Technology Corporation. All Rights Reserved. This work is protected as an unpublished work under the copyright laws.

**This work is confidential and proprietary information of SeeBeyond and must be maintained in strict confidence.**

Version 20021105150341.

# Contents

---

## Chapter 1

<b>Introduction</b>	<b>5</b>
<b>The Notification Process</b>	<b>5</b>
Standard Alerts	6
Custom Alerts	6
Using the Alert Agent with the e*Gate SNMP Agent	6
<b>Document Purpose and Scope</b>	<b>6</b>
<b>Intended Audience</b>	<b>7</b>
<b>Organization of Information</b>	<b>8</b>
<b>Writing Conventions</b>	<b>8</b>
<b>Supporting Documents</b>	<b>9</b>
<b>SeeBeyond Web Site</b>	<b>10</b>

---

## Chapter 2

<b>Installation</b>	<b>11</b>
<b>System Requirements</b>	<b>11</b>
Support For Delivery Channels	12
<b>Installing Alert Agent on Windows NT/Windows 2000</b>	<b>12</b>
Pre-installation	12
Installation Procedure	12
<b>Installing Alert Agent on UNIX</b>	<b>13</b>
Pre-installation	13
Installation Procedure	14

---

## Chapter 3

<b>Working with the Alert Agent</b>	<b>15</b>
<b>Adding an Alert Agent to a Schema</b>	<b>15</b>
Notification Routing	16
<b>Alert Agent General Operation</b>	<b>16</b>
Configuring the Alert Agent	16
Preparing to use the Alert Agent	16

Controlling the Alert Agent	19
<b>Configuring Channels</b>	<b>19</b>
Configuring E-mail Channel Properties	20
E-mail Client Properties: General Tab	20
E-mail Client Properties: E-Mail Recipients Tab	21
Configure Default Print Configuration	23
SMTP Authentication	23
Set Default Message	24
Activating and Deactivating Channels	24
Testing Channels	24
Alert Agent Failover	25
Log Files	25
<b>Using Alert Agent on UNIX</b>	<b>25</b>
Controlling the Alert Agent	25
SMTP Authentication	26
Modify the stcaa.sh file	26
Log Files	26
Modify the stcaa.cfg file	27
Alert Agent Settings	27
NCB Settings	27
Default E-mail Settings	27
Java method: eventSend()	28
Multiple Alert Agents	28

<b>Index</b>	<b>29</b>
--------------	-----------

# Introduction

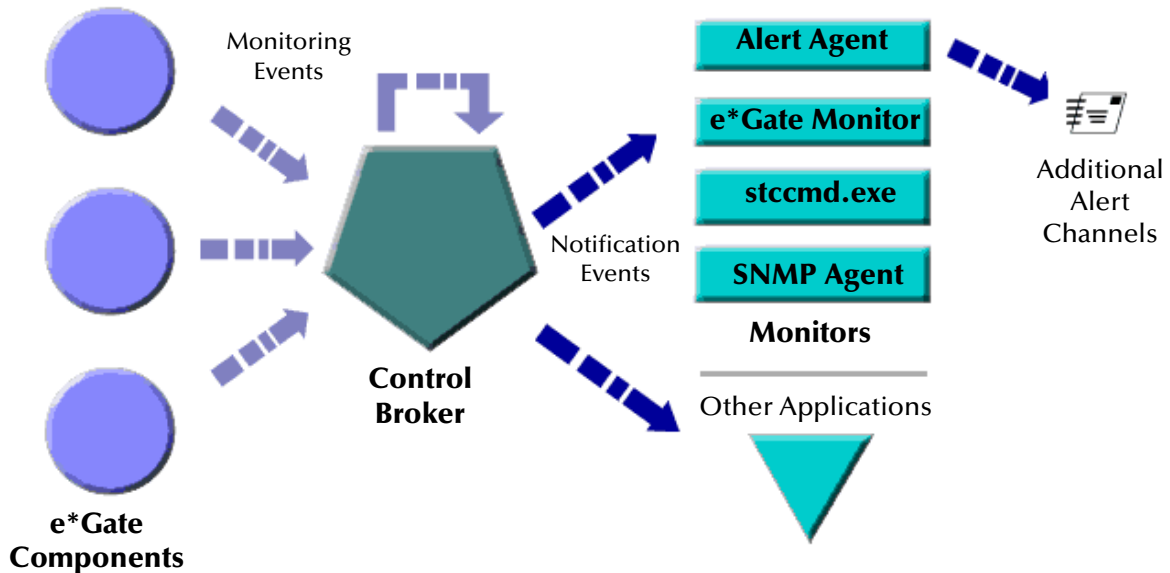
This chapter introduces you to this guide, its general purpose and scope, and its organization. It also provides sources of related documentation and information.

## 1.1 The Notification Process

Notification is a chain of Events that begins when a component reports its status to the Control Broker and ends when an Alert is sent to a user. The Alert Agent forwards notification Events generated by the Control Broker to the supported delivery channels (such as e-mail).

Figure 1 illustrates the notification process.

**Figure 1** Notification Process



### 1.1.1 Standard Alerts

e\*Gate allows you to set up your system to alert you when standard e\*Gate components fail or become unresponsive. See the *e\*Gate Integrator Alert and Log File Reference Guide* for a complete list of standard notification codes.

If you would like to receive the default set of alerts, you only need to configure your notification script file (**Notification.tsc**) and your Alert Agent (See **“Configuring Channels” on page 19**) to send alerts through the supported channels. See the *e\*Gate Integrator Alert and Log File Reference Guide* for details on modifying your **Notification.tsc** file.

For detailed information on “Developing and Implementing Notification Strategies,” see the *e\*Gate Integrator Alert and Log File Reference Guide*.

### 1.1.2 Custom Alerts

In addition to the default set of Alerts, you can customize your Alert system to notify you when an Event takes place within a Collaboration. The **event-send function** in Monk (see the *e\*Gate Integrator Alert and Log File Reference Guide*) and the **eventSend()** Java method (see the *e\*Gate Integrator User’s Guide*) enable you to communicate status conditions of user-created applications.

For example, you may want to set up a custom Alert if:

- A message fails to parse correctly.
- An illegal currency code is received.
- The number of messages fall below a threshold, over a period of time.

The above scenarios require that you add logic to your Collaboration(s) to trap errors. See the *e\*Gate Integrator System Administration and Operations Guide* for help configuring disk or message traps.

## Using the Alert Agent with the e\*Gate SNMP Agent

If you are also using the e\*Gate SNMP Agent to trap errors and system status information, you can configure the Alert Agent to accept and forward these notifications. See the *e\*Gate Integrator SNMP Agent User’s Guide* and the *e\*Gate Integrator Alert and Log File Reference Guide* for information on setting up the SNMP Agent.

---

## 1.2 Document Purpose and Scope

This guide explains how to *install* and *configure* the SeeBeyond Technology Corporation™ (SeeBeyond™) e\*Gate Integrator Alert Agent. This component enables the e\*Gate Integrator system to send notifications of system status through e-mail and printer channels.

**Important:** *It is necessary to use this document with the **e\*Gate Integrator Alert and Log File Reference Guide** and the **e\*Gate Integrator System Administration and Operations Guide**, to completely understand, setup, and use e\*Gate's Alert Notification functionality.*

Operation explanations given here are generic, for reference purposes only, and do not address the specifics of setting up or operating individual e\*Gate systems. This document does not contain information on general e\*Gate installation. For information on these and related topics, see **“Supporting Documents” on page 9**.

---

## 1.3 Intended Audience

This guide presumes that its reader is a developer or system administrator with the responsibility for setting up and/or maintaining the e\*Gate system. This user/reader needs to have basic to expert-level knowledge of network operations and administration, as well as knowledge in the operation of UNIX or Microsoft Windows (Windows NT 4/2000).

Such operations include a thorough familiarity with Windows-style graphical user interface (GUI) operations. When necessary, this document explains some Windows NT/2000 operations, but not those generic to all Windows systems.

When referring to the GUI, this document employs standard Windows terminology. For more information on how to use Windows features, as well as Windows terminology, see the appropriate Microsoft user's guide.

---

## 1.4 Organization of Information

This document is organized topically as follows:

- **Chapter 1 “Introduction”** — Gives a general preview of this document, its purpose, scope, and organization.
- **Chapter 2 “Installation”** — Explains how to install the Alert Agent Add-on software.
- **Chapter 3 “Working with the Alert Agent”** — Discusses the general operation and use of the Alert Agent feature.

---

## 1.5 Writing Conventions

The writing conventions listed in this section are observed throughout this document.

### Hypertext Links

When you are using this guide online, cross-references are also hypertext links and appear in **blue text** as shown below. Click the **blue text** to jump to the section.

For information on these and related topics, see **“Parameter, Function, and Command Names” on page 9**.

### Command Line

Text to be typed at the command line is displayed in a special font as shown below.

```
java -jar ValidationBuilder.jar
```

Variables within a command line are set in the same font and bold italic as shown below.

```
stcregutil -rh host-name -rs schema-name -un user-name  
-up password -ef output-directory
```

### Code and Samples

Computer code and samples (including printouts) on a separate line or lines are set in Courier as shown below.

```
Configuration for BOB_Promotion
```

However, when these elements (or portions of them) or variables representing several possible elements appear within ordinary text, they are set in *italics* as shown below.

*path* and *file-name* are the path and file name specified as arguments to **-fr** in the **stcregutil** command line.

### Notes and Cautions

Points of particular interest or significance to the reader are introduced with *Note*, *Caution*, or *Important*, and the text is displayed in *italics*, for example:

*Note:* *The Actions menu is only available when a Properties window is displayed.*



## User Input

The names of items in the user interface such as icons or buttons that you click or select appear in **bold** as shown below.

Click **Apply** to save, or **OK** to save and close.

## File Names and Paths

When names of files are given in the text, they appear in **bold** as shown below.

Use a text editor to open the **ValidationBuilder.properties** file.

When file paths and drive designations are used, with or without the file name, they appear in **bold** as shown below.

In the **Open** field, type **D:\setup\setup.exe** where **D:** is your CD-ROM drive.

## Parameter, Function, and Command Names

When names of parameters, functions, and commands are given in the body of the text, they appear in **bold** as follows:

The default parameter **localhost** is normally only used for testing.

The Monk function **iq-put** places an Event into an IQ.

You can use the **stccb** utility to start the Control Broker.

---

## 1.6 Supporting Documents

The following SeeBeyond documents provide additional information about the Alert Agent as explained in this guide:

- *Creating an End-to-end Scenario with e\*Gate Integrator*
- *e\*Gate Integrator Alert and Log File Reference Guide*
- *e\*Gate Integrator Collaboration Services Reference Guide*
- *e\*Gate Integrator Installation Guide*
- *e\*Gate Integrator SNMP Agent User's Guide*
- *e\*Gate Integrator System Administration and Operations Guide*
- *e\*Gate Integrator User's Guide*
- *SeeBeyond eBusiness Integration Suite™ Deployment Guide*
- *SeeBeyond eBusiness Integration Suite Primer*
- *Monk Developer's Reference*
- *Standard e\*Way Intelligent Adapters User's Guide*

See the *SeeBeyond eBusiness Integration Suite Primer* for a complete list of SeeBeyond eBI Suite-related documentation. If necessary, refer to the appropriate Microsoft Windows or UNIX documents.

*Note: For information on how to use a specific Add-On product (for example, an e\*Way Intelligent Adapter), see the user's guide for that product.*

---

## 1.7 SeeBeyond Web Site

The SeeBeyond Web site is your best source for up-to-the-minute product news and technical support information. The site's URL is

<http://www.SeeBeyond.com>

# Installation

This chapter explains how to install the Alert Agent on your computer. The Alert Agent installs as an add-on in the standard e\*Gate installation.

## This Chapter Includes:

- [“System Requirements” on page 11](#)
- [“Installing Alert Agent on Windows NT/Windows 2000” on page 12](#)
- [“Installing Alert Agent on UNIX” on page 13](#)

---

## 2.1 System Requirements

The e\*Gate Alert Agent is available on the following operating systems:

- Windows 2000, Windows 2000 SP1, and Windows 2000 SP2
- Windows 2000 (Japanese), Windows 2000 SP1 (Japanese), and Windows 2000 SP2 (Japanese)
- Windows 2000 (Korean), Windows 2000 SP1 (Korean), and Windows 2000 SP2 (Korean)
- Windows NT 4 SP6a
- Windows NT 4 SP6a (Japanese)
- Windows NT 4 SP6a (Korean)
- Solaris 2.6, 7, and 8
- Solaris 2.6, 7, and 8 (Japanese)
- Solaris 8 (Korean)
- AIX 5.1
- HP-UX 11.0 and HP-UX 11i
- HP-UX 11.0 (Japanese)
- HP-UX 11.0 (Korean)

## 2.1.1 Support For Delivery Channels

All Alert Agents support e-mail as a delivery channel, while Windows-based Alert Agents additionally support printing. See Table 1 below (an “X” indicates supported channel).

**Table 1** OS Support For Delivery Channels

Channel	Windows Platforms	UNIX Platforms
E-mail	X	X
Printer	X	

### Additional Hardware/Software Requirements

Table 2 below lists the additional resources required to support the Alert Agent’s communication channels.

**Table 2** Additional Channel Requirements

Channel	Requirement
E-mail	Access to an SMTP server
Printer	Any accessible printer (network or local)

---

## 2.2 Installing Alert Agent on Windows NT/Windows 2000

You must be logged on to Windows as a user with Administrator privileges to install this software on your machine.

### 2.2.1 Pre-installation

- Review the **Readme.txt** file in the **setup\addons\aa** directory for any issues that may pertain to your installation of e\*Gate Integrator and Alert Agent.
- Exit all Windows programs before running the setup program, including any anti-virus applications.
- For Alert Agent to operate properly, you must have a Participating Host and the Java Runtime Environment (JRE) installed on the local machine.

### 2.2.2 Installation Procedure

To install Alert Agent on a Windows NT or Windows 2000 system

- 1 Log in as an Administrator on the workstation on which you want to install the Alert Agent.
- 2 Insert the e\*Gate installation CD-ROM into the CD-ROM drive.

- 3 If the “Autorun” feature is enabled on the CD-ROM drive, the setup application launches automatically; skip ahead to step 4. Otherwise, use Windows Explorer or the **Add/Remove Applications** option on the Control Panel to launch the file **setup.exe** on the CD-ROM drive.
- 4 The InstallShield setup application launches. Follow the on-screen instructions to install the Alert Agent.

Be sure to install the Alert Agent files in the suggested “client” installation directory. The installation utility detects and suggests the appropriate installation directory.

**Unless you are directed to do so by SeeBeyond support personnel, do not change the suggested “installation directory” setting.**

---

## 2.3 Installing Alert Agent on UNIX

The Alert Agent is initially configured when it is installed on the system as an e\*Gate add-on. The script automatically runs, requesting the following:

- Java Runtime Environment (JRE) Path
- Alert Agent Logical Name (as defined in the schema)
- Registry Schema Name
- CB Logical Name (the Control Broker name)
- E-mail Host Name
- E-mail User Name
- E-mail Address

The installation script creates the Alert Agent configuration file, **stcaa.cfg** and the script file **stcaa.sh**.

***Note:** The UNIX Java installation uses the old `client/j2re1_3_0_02` path. If installing the 4.5.3 release of the Alert Agent, you must set the path to `client/JRE/1.3.1_02` during the UNIX installation.*

### 2.3.1 Pre-installation

- Review the **Readme.txt** file in the **setup\addons\aa** directory for any issues that may pertain to your installation of e\*Gate Integrator and Alert Agent.
- Log in under the user name that you want to own the add-on files. Be sure that this user has sufficient privileges to create files in the e\*Gate directory tree. Root privileges are not required to install this add-on.
- You must have a Participating Host installed on the local machine to install the Alert Agent.

#### Set UNIX variables

- You must define the following environment variables prior to installation:

- ◆ \$HOME - Defined per user upon login.
- ◆ \$PATH - Modify it to include the e\*Gate executable files.
- ◆ \$CLASSPATH - Modify it to include the e\*Gate Java files.
- ◆ \$LD\_LIBRARY\_PATH (On Solaris) - For Library files.
- ◆ \$SHLIB\_PATH (on HP-UX) - For Library files.
- ◆ \$LIBPATH (on AIX) - For Library files.

You must have an X-Server installed as the JDK 1.3.x and earlier does not support “headless” operation. In the `stcaa.sh` file, modify the DISPLAY variable to match your configuration of X-Server. The default DISPLAY configuration is as follows:

```
DISPLAY=localhost:0.0; export DISPLAY
```

*Note:* ‘Headless’ operation in a UNIX environment means that a windowing system is not required to run Java programs.

## 2.3.2 Installation Procedure

To install the Alert Agent on a UNIX system

- 1 Log in on the workstation containing the CD-ROM drive, and insert the CD-ROM into the drive.
- 2 If necessary, mount the CD-ROM drive.
- 3 At the shell prompt, type

```
cd /cdrom
```
- 4 Start the installation script by typing

```
./setup.sh
```
- 5 A menu of options displays. Enter “1” for **e\*Gate Add-On Applications**.  
You are prompted for an installation path. Install the Alert Agent files in the suggested “client” installation directory.
- 6 Login as an Administrator to your Registry Host.
- 7 Enter “2” for **Agents**.
- 8 Enter “1” for **Alert Agent**.
- 9 Follow the prompts to continue installing Alert Agent.

# Working with the Alert Agent

This chapter describes how to add an Alert Agent to your schema, configure the Alert Agent, and implement a failover system for the Alert Agent. The e\*Gate Alert Agent forwards notifications through available channels. The Alert Agent itself requires no intervention besides configuration.

This Chapter Includes:


- “Adding an Alert Agent to a Schema” on page 15
- “Alert Agent General Operation” on page 16
- “Configuring Channels” on page 19
- “Alert Agent Failover” on page 25
- “Using Alert Agent on UNIX” on page 25

---

## 3.1 Adding an Alert Agent to a Schema

Before you can use the Alert Agent to send notifications, you must add an Alert Agent component to the schema you want to monitor.

To add an Alert Agent component to a schema

- 1 Launch the Enterprise Manager and open the desired schema.
- 2 Select the **Components** tab.
- 3 In the Navigator, select the host on which the Alert Agent will run.
- 4 On the Palette, click .
- 5 Enter a name for the Alert Agent and click **OK**.

The name you assign to the Alert Agent (also called the Agent’s *logical name*) will become important when you configure the Agent.

You can create additional Alert Agents within the same schema (to provide failover protection), but you may only create one Alert Agent per Participating Host. You must install a Participating Host and an Alert Agent on every host that you want to monitor.

Additional Alert Agents should be assigned a lower ranking than the primary Alert Agent. To set an Alert Agent’s ranking, display its properties, then assign a ranking number (where 1 is the highest rank).

### 3.1.1 Notification Routing

The Alert Agent uses the **Notification.tsc** file for notification routing. You must modify the **Notification.tsc** file to enable the Alert channels. All channels are disabled by default. For information on customizing the **Notification.tsc** file, see the *e\*Gate Integrator Alert and Log File Reference Guide*.

---

## 3.2 Alert Agent General Operation

Alert Agent runs as a Service on Windows NT and Windows 2000. The first time you launch the Alert Agent configuration tool, a service called e\*Gate Alert Agent appears in your list of Windows Services.

You can control the Alert Agent service in the same manner as other Windows Services, including having the service start upon Windows startup.

### 3.2.1 Configuring the Alert Agent

This section explains how to configure and control the Alert Agent feature using the configuration tool.

#### Preparing to use the Alert Agent

If your system has a previous version of the Alert Agent installed, you must first remove the Alert Agent service from your list of Services.

##### To remove a previous installation of the Alert Agent service

- 1 Click Start then select **Run**.
- 2 Type **cmd** at the **Run** prompt.  
A command prompt appears.
- 3 Type **stcaa -sr** at the command prompt.
- 4 Close the DOS window.

The service is now removed from your list of Services. When you start the Alert Agent configuration tool, a new Alert Agent service is added to the list.

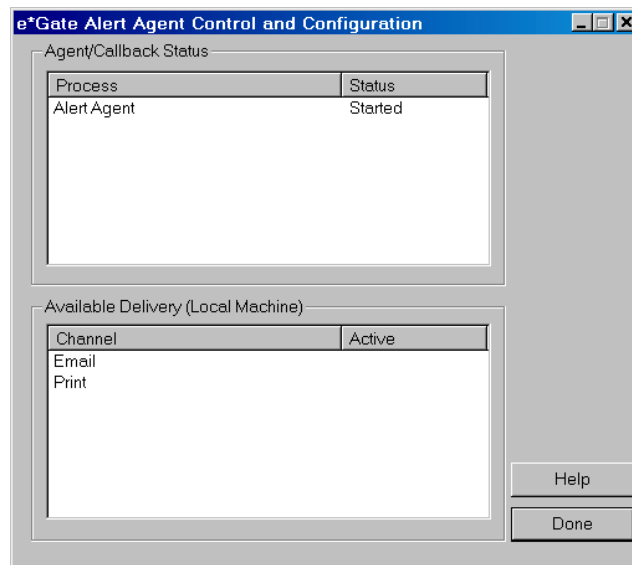
##### To launch the Alert Agent configuration tool

- 1 Click the **Start** button.
- 2 Point to **Programs** and then point to **SeeBeyond eBusiness Integrator Suite**.
- 3 Click **e\*Gate Alert Agent**.

The Alert Agent configuration tool appears, as shown in the [Figure 2 on page 17](#).



**Figure 2** Alert Agent Configuration Tool

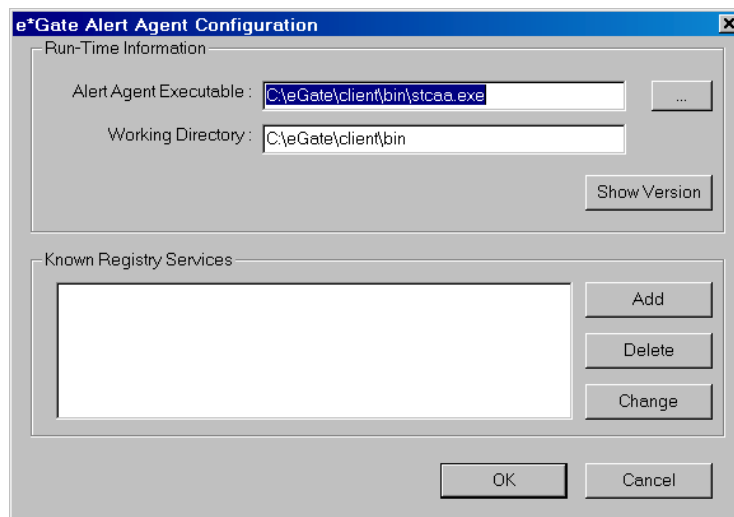


Before you can use the Alert Agent, you must configure it to support specific Registry Hosts and schemas.

**To modify the Alert Agent's configuration**

- 1 Start the Alert Agent configuration tool (see the [procedure on page 16](#)).
- 2 In the **Process** column under **Agent/Callback Status:** , right-click **Alert Agent**.
- 3 From the shortcut menu, click **Properties**. The **e\*Gate Alert Agent Configuration** dialog box appears (see Figure 3).

**Figure 3** Alert Agent Configuration Dialog Box



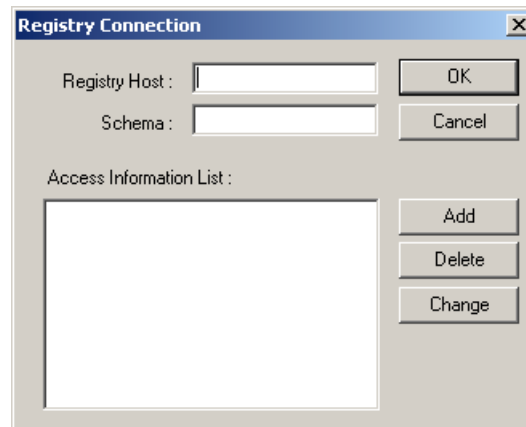
- 4 Under **Run-Time Information**, enter the location and file name of the Alert Agent executable file (**stcaa.exe**).

The default name and location of the Alert Agent executable is:

C:\eGate\client\bin\stcaa.exe

- 5 Under **Known Registry Services**, click **Add**. The **Registry Connection** dialog box appears (see Figure 4).

**Figure 4** Registry Connection Dialog Box

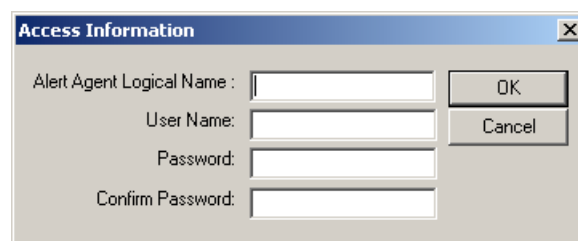


- 6 In the **Registry Host** box, enter the name of an e\*Gate Registry Host (as defined within the Enterprise Manager).
- 7 In the **Schema** box, enter the name of the schema in which this Alert Agent is defined.
- 8 Under **Access Information List**, do any of the following:
  - A Click **Add** to add the Alert Agent's name and "run as" information as defined within the schema. The **Access Information** dialog box appears (see Figure 5).

*Note:* Use the Enterprise Manager to change the Alert Agent's properties.

- B Select an Alert Agent from the list and then click **Delete** to delete the entry.
- C Select an Alert Agent from the list and then click **Change** to change existing Alert Agent configuration information. The **Access Information** dialog box appears (see Figure 5).

**Figure 5** Access Information Dialog Box



- 9 In the **Alert Agent Logical Name** box, enter the name of this Alert Agent as defined within the schema you specified in Step 7 above.

- 10 In the **User Name** box, enter the e\*Gate user name under which this Alert Agent will be run.

**Note:** *Unless you changed the default in the Enterprise Manager, enter **Administrator**.*

- 11 In the **Password** and **Confirm Password** boxes, enter the password associated with the user name you entered in step 10. The two entries must match.
- 12 Click **OK**.
- 13 Repeat steps 7 through 12 for each Alert Agent defined within the schema. When you have finished, click **OK** to close the **Registry Connection** dialog box.
- 14 Repeat steps 5 through 12 for each Registry Host that this Alert Agent supports.
- 15 When you have finished, click **OK** to close the **e\*Gate Alert Agent Configuration** dialog box.

### 3.2.2 Controlling the Alert Agent

Use this procedure to start or shutdown the Alert Agent from the Alert Agent Configuration Tool.

To control the Alert Agent

- 1 Start the Alert Agent configuration tool (see the [procedure on page 16](#)).
- 2 Under Agent/Callback Status: In the Process column, right-click **Alert Agent**.
- 3 From the shortcut menu, select **start** or **stop**.

On Windows, the Alert Agent behaves as any other Windows Service. You can use the Windows Service Manager to start or stop the Alert Agent Service.

---

## 3.3 Configuring Channels

You must configure each channel you want to use for sending notifications.

To configure a channel

- 1 Start the Alert Agent configuration tool (see the [procedure on page 16](#)).
- 2 In the Channel column under **Available Delivery (Local Machine)**, right-click the name of the channel you want to configure.
- 3 From the shortcut menu, click **Properties**.

### 3.3.1 Configuring E-mail Channel Properties

#### E-mail Client Properties: General Tab

##### Logon Information

- **Profile Name:** Enter the login name for the SMTP host account that you use to send e-mail notifications (optional).
- **Password:** Enter the password for the SMTP host account (optional).
- **SMTP E-mail Host:** Enter the network name of the SMTP host.

##### Default E-mail Sender Information

The next several options specify default information that are used if an e-mail notification does not contain the corresponding information.

- **Sender Name:** Enter the name of the default sender.
- **Sender E-mail:** Enter the e-mail address of the default sender.
- **Subject:** Enter the default subject for the notification message.
- **Body:** Enter the default body of the notification message.

**Figure 6** Alert Client E-mail Settings: General Tab

The screenshot shows a dialog box titled "Alert Client EMail Settings" with a close button (X) in the top right corner. The dialog has two tabs: "General" (selected) and "E-mail Recipients". The "General" tab contains two sections: "Logon Information" and "Default Email Sender Information".

**Logon Information:**

- Profile Name :
- Password :
- SMTP Mail host :

**Default Email Sender Information:**

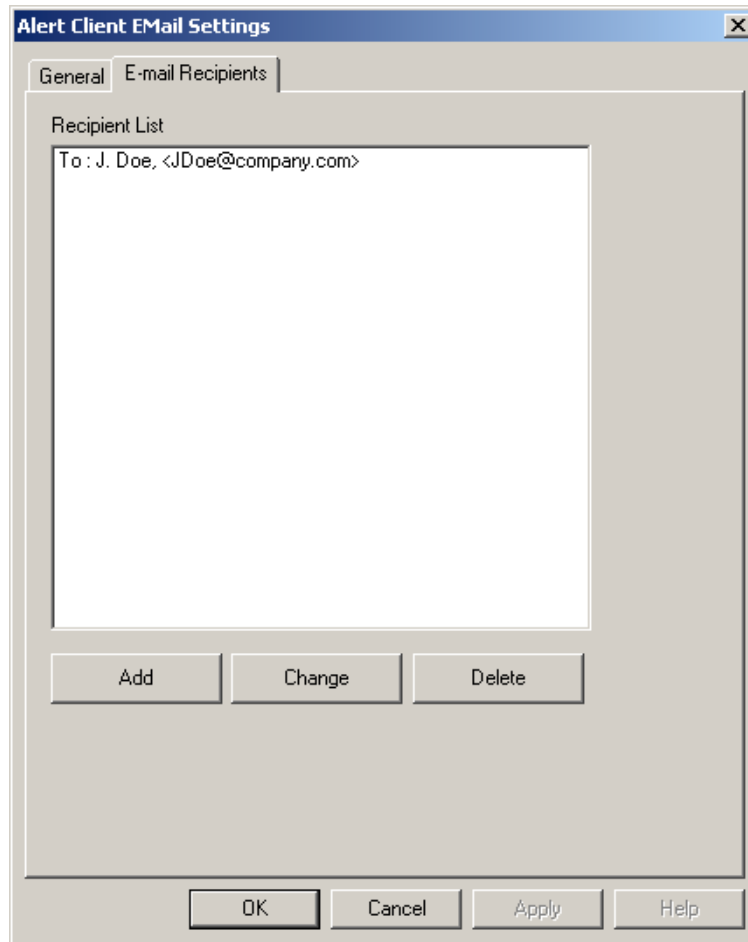
- Sender Name :
- Sender Email :
- Subject :
- Body :

At the bottom of the dialog are four buttons: "OK", "Cancel", "Apply", and "Help".

### E-mail Client Properties: E-Mail Recipients Tab

This tab specifies the default recipients for all e-mail notifications that will be used if the notification does not specify any recipients.

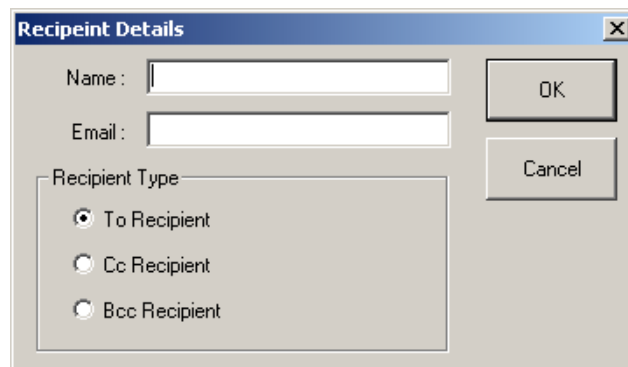
**Figure 7** Alert Client E-mail Settings: E-mail Recipients Tab



#### Add, Change, or Delete a Recipient

- To add a recipient to the list, click **Add**.
- To change recipient information, select a recipient and then click **Change**.
- To delete a recipient, select a recipient and then click **Delete**.

**Figure 8** Recipient Details



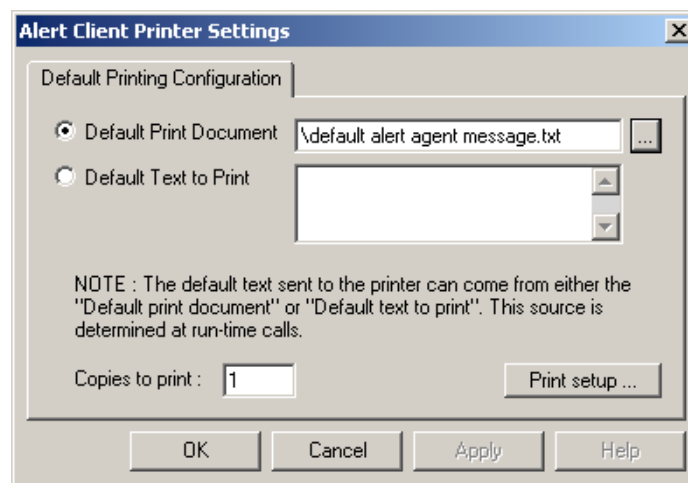
### Recipient details

- **Name:** Enter the recipient's *real* name (for example, J. Doe).
- **E-mail:** Enter the recipient's address, with surrounding brackets (for example, <jdoe@company.com>).
- **Recipient type:** Select whether this recipient will appear in the message's **To**, **Cc**, or **Bcc** field.

## 3.3.2 Configure Default Print Configuration

- 1 Do one of the following to set a default message to print:
  - ♦ To select a default document to print, click **Default Print Document**. Use the ... button to browse for a file to print.

**Figure 9** Alert Client Printer Settings



- ♦ To specify text to print, select **Default Text to Print**. Enter the text to be printed in the box.
- 2 In the **Copies to print** box, enter the number of copies to be printed.
  - 3 Click **Print setup** to display a standard Windows **Print Setup** dialog box.

## 3.3.3 SMTP Authentication

If you are using SMTP server authentication, you can instruct the Alert Agent to send authentication information to the server.

### Enable SMTP Authentication

To enable authentication, enter a user name (profile name) and password for the default channel in the Alert Agent GUI. Both the user name (profile name) and password must be set to enable SMTP authentication. Also, enter the same user name and password in **notification.tsc** (in the alert delivery channel section).

To disable authentication on Windows, you must delete the user name and password for both Alert Agent GUI and **notification.tsc**. See the *e\*Gate Integrator Alert and Log File Reference Guide* for information on modifying the **notification.tsc** file.

**Note:** *If the Alert Agent is not able to authenticate using the supplied username and password, it sends a notification through the default channel. If the default channel fails, the Alert Agent shuts down. For this reason, it is important that the default alert channel is configured properly.*

### 3.3.4 Set Default Message

When you configure a channel, you specify default information for the e-mail or printer setup. The Alert Agent will send notifications using the default values under any of the following conditions:

- The delivery channel failed.
- The Alert Agent lost its connection to the Control Broker.
- Input data was unusable (for example, a malformed e-mail address).

We recommend you select your default recipients and phrase your default messages to take this into account.

### 3.3.5 Activating and Deactivating Channels

After you define a channel, you must activate the channel. Each channel must be activated separately.

To activate or deactivate a channel

- 1 In the **Channel** column under **Available Delivery (Local Machine)** on the **e\*Gate Alert Agent Control and Configuration** dialog box, right-click a channel.
- 2 From the shortcut menu, click **Toggle Active**.

### 3.3.6 Testing Channels

The test command sends the channel's default message to the default recipients. If the message is received as expected, the channel delivery system is functioning normally.

To test a channel

- 1 In the **Channel** column under **Available Delivery (Local Machine)** on the **e\*Gate Alert Agent Control and Configuration** dialog box, right-click a channel.
- 2 From the shortcut menu, click **Test**.

**Note:** *You must test each channel separately.*



### 3.3.7 Alert Agent Failover

e\*Gate architecture provides for Alert Agent failover. When you define an Alert Agent in the Enterprise Manager, you specify a “designation level” number, which effectively sets the rank of the Alert Agent in the failover scheme.

The Control Broker will always send notifications to the highest-ranked available Alert Agent. By running more than one Alert Agent, you provide for notification delivery if one Agent stops functioning or is unable to deliver a notification over a specific channel.

We recommend you use this configuration:

- 1 Install and configure one Alert Agent on multiple Participating Hosts.
- 2 Within each schema that these Alert Agents will monitor, define *each* of the Alert Agents on its own Participating Host.
- 3 Assign each Alert Agent a different rank number.

The Control Broker sends its notifications to whichever Alert Agent is available with the highest rank number. If one fails, a backup then takes over.

### 3.3.8 Log Files

The Alert Agent writes a log file called **AlertAgent.log** to:

```
/egate/client/logs
```

For detailed information on Alert Agent Logs, see the *e\*Gate Integrator Alert and Log File Reference Guide*.

---

## 3.4 Using Alert Agent on UNIX

To start or stop the Alert Agent, you must execute the **stcaa.sh** script that was created during setup. The **stcaa.sh** script invokes the Java runtime executable and the configuration file for each Alert Agent.

### 3.4.1 Controlling the Alert Agent

#### To Start the Alert Agent

Run the following script:

```
/egate/client/bin/stcaa.sh
```

(This is the default path to the file.)

#### To Stop the Alert Agent

Run the following script:

```
/egate/client/bin/stcaa.sh -stop
```

(This is the default path to the file.)

## SMTP Authentication

If you are using SMTP server authentication, you can instruct the Alert Agent to send authentication information to the server.

### To enable authentication

- Add the following information to the end of the default mail settings section of your **stcaa.cfg** file:

```
SMTP_USER=username  
SMTP_PASSWORD=password
```

- Start the Alert Agent with the **-auth** flag. For example:

```
/egate/client/bin/stcaa.sh -auth
```

***Note:** If the Alert Agent is not able to authenticate using the supplied username and password, it sends a notification through the default channel. If the default channel fails, the Alert Agent shuts down. For this reason, it is important that the default alert channel is configured properly.*

### 3.4.2 Modify the **stcaa.sh** file

During Alert Agent installation, you were prompted to enter information necessary to run the Alert Agent. Some of this information is stored in your script file (**stcaa.sh**). You may need to modify your script file if the path to the Java Runtime Environment (JRE) is incorrect, or if your home environment variable changes.

#### Modify the Java Runtime Environment path

The JRE path is specified by the user during the Alert Agent installation process. If an incorrect path is entered during installation or it changes, the Alert Agent will not run properly.

To modify the JRE path, verify that you have the correct path and then overwrite the existing path in your **stcaa.sh** script file.

#### Add a home environment variable

If your home environment changes after installation, you must modify the **stcaa.sh** script file so the Alert Agent can write its logs to the proper location.

To reflect the new home environment variable in the Alert Agent logs, add the following line to the **stcaa.sh** script file directly after your JRE path:

```
-Duser.home=$HOME
```

Example:

```
/jre130/bin/java -Duser.home=$HOME -cp
```

### 3.4.3 Log Files

The Alert Agent writes a log file called **agent.log** to:

```
/egate/client/logs
```

For detailed information on Alert Agent Logs, see the *e\*Gate Integrator Alert and Log File Reference Guide*.

### 3.4.4 Modify the `stcaa.cfg` file

The Alert Agent's configuration file (`stcaa.cfg`) contains the configuration information entered during installation. To change the configuration settings, open the `stcaa.cfg` file in your text editor. The default path to the file is:

```
/egate/client/bin/stcaa.cfg
```

## Alert Agent Settings

This section contains the items relating to your Alert Agent configuration. You can modify the following settings:

- Registry Host
- Registry Port
- Schema Name
- Alert Agent Logical Name
- Mail Hostname

## NCB Settings

NCB is the connection for Alert Agent into the Notification Control Broker system. You can modify the following settings:

- Registry Host
- Registry Port
- Process Host
- Schema Name
- Control Broker logical name
- Number of Retries
- Retry Interval
- Status Update Interval

## Default E-mail Settings

This section contains default settings for E-mail channel information. You can modify the following settings:

- From: Sender Name; <e-mail Address>
- To: Recipient; <e-mail Address>
- CC: Recipient; <e-mail Address>
- BCC Recipient; <e-mail Address>

*Note:* Use angle brackets around outgoing e-mail addresses (as shown above).

### 3.4.5 Java method: `eventSend()`

Information on the Java method `eventSend()` is located in the *e\*Gate Integrator User's Guide*.

### 3.4.6 Multiple Alert Agents

If additional Participating Hosts or schemas use the same Alert Agent startup script, define the logical Alert Agent(s) within the respective schema(s) and Registry Host(s).

Copy the `stcaa.cfg` to another file, and modify the `stcaa.sh` reflecting the change. The `stcaa.cfg` file can then be used as a template for the additional defined Alert Agents. Follow the guidelines from the original configuration file and, when completed, add another line to the `stcaa.sh`, using the newly created configuration file.

# Index

## A

- additional information
  - technical support 10
- Alert Agent
  - add to a schema 15
  - configuring 16
  - controlling 19
  - failover/backup capability 25
  - log file 25
  - ranking 15
  - removing 16
  - running multiple 28
  - UNIX settings 27
- alert channel
  - default 24
- alerts
  - custom 6
  - standard 6

## C

- channels
  - activating 24
  - configuring 19
  - deactivating 24
  - delivery 12
  - testing 24
- Components tab 15
- configuration 17, 19
- configuration file
  - stcaa.cfg 13, 26, 28
- Configuration Tool 17, 19
- configure a channel 19
- conventions, writing in document 8

## D

- document
  - intended audience 7
  - organization of information 8
  - purpose and scope 6
  - supporting 9

## E

- E-mail Host Name 13
- E-mail notification 20
- E-mail Recipient
  - Add, Change, or Delete 22
- E-mail Settings 22
- E-mail settings
  - default 27
- environment variable 26
- event-send function 6
- eventSend() Method 6, 28
- executable file
  - stcaa.exe 17

## F

- failover 15

## I

- Installing
  - Windows NT or Windows 2000 12
    - Installation Procedure 12
    - Pre-installation 12
- Installing on UNIX 13
  - Installation Procedure 14
  - Pre-installation 13

## J

- Java Runtime Environment (JRE) 12
- JDK 1.3.x 14

## L

- log files 25, 26
- Logical Name 13
- logical name 15

## M

- modify
  - stcaa.cfg file 27
  - stcaa.sh file 26

## N

- notification
  - codes 6
- Notification channels
  - activating 24
  - configuring 19
  - deactivating 24

## Index

- testing 24
- notification process
  - overview 5, 6
- notification routing 16
- notification.tsc file 16, 23

## P

- Participating Host 12, 15, 25
- Platforms
  - UNIX 12
  - Windows 12
- Print Configuration 23
- Profile Name 20

## R

- Readme.txt file 12, 13
- Registry connection 19
- Registry Host 19
- Registry Schema 13

## S

- schema
  - adding an Alert Agent 15
- sending notifications 19
- SMTP Authentication 23, 26
  - disable 24
- SMTP E-mail Host 20
- SMTP host 20
- SNMP Agent 6
- stcaa.cfg
  - modifying 27
- stcaa.exe
  - executable file 18
- system requirements 11

## U

- UNIX
  - DISPLAY variable 14
  - installation 13
  - variables 13
- UNIX script file
  - stcaa.sh 13, 25, 28

## W

- Windows
  - setup 13

## X

- X-Server 14