

SeeBeyond ICAN Suite

eGate Integrator Alert Agent User's Guide

Release 5.0.2



The information contained in this document is subject to change and is updated periodically to reflect changes to the applicable software. Although every effort has been made to ensure the accuracy of this document, SeeBeyond Technology Corporation (SeeBeyond) assumes no responsibility for any errors that may appear herein. The software described in this document is furnished under a License Agreement and may be used or copied only in accordance with the terms of such License Agreement. Printing, copying, or reproducing this document in any fashion is prohibited except in accordance with the License Agreement. The contents of this document are designated as being confidential and proprietary; are considered to be trade secrets of SeeBeyond; and may be used only in accordance with the License Agreement, as protected and enforceable by law. SeeBeyond assumes no responsibility for the use or reliability of its software on platforms that are not supported by SeeBeyond.

SeeBeyond, e*Gate, and e*Way are the registered trademarks of SeeBeyond Technology Corporation in the United States and select foreign countries; the SeeBeyond logo, e*Insight, and e*Xchange are trademarks of SeeBeyond Technology Corporation. The absence of a trademark from this list does not constitute a waiver of SeeBeyond Technology Corporation's intellectual property rights concerning that trademark. This document may contain references to other company, brand, and product names. These company, brand, and product names are used herein for identification purposes only and may be the trademarks of their respective owners.

© 2003 by SeeBeyond Technology Corporation. All Rights Reserved. This work is protected as an unpublished work under the copyright laws.

This work is confidential and proprietary information of SeeBeyond and must be maintained in strict confidence.

Version 20031222131530.

Contents

List of Figures	5
------------------------	----------

Chapter 1

Introduction	6
Purpose and Scope	6
Organization of Information	6
Writing Conventions	7
Additional Conventions	7
Supporting Documents	7
The SeeBeyond Web Site	8

Chapter 2

Installation	9
System Requirements	9
Installing the Alert Agent	9

Chapter 3

Using the Alert Agent	10
Alert Agent Overview	11
Accessing the Alert Agent	13
Creating Notifications	14
Step 1: Create a Channel	15
Step 2: Create One or More Recipients	16
Step 3: Create One or More Destinations	17
Step 4: Create a Notification	18
Testing the Notification	21
Handling a Notification in an eGate Project	21
Editing Notifications	24
Deleting Notifications	25

Index

26

List of Figures

Figure 1	Notification Example	11
Figure 2	Alert Agent Node	13
Figure 3	Notification Configurations Window	13
Figure 4	Creating a Notification	14
Figure 5	Channels Tab	15
Figure 6	Define new channel Dialog Box	15
Figure 7	Recipients Tab	16
Figure 8	Define new recipient Dialog Box	17
Figure 9	Destinations Tab	17
Figure 10	Define new destination Dialog Box	18
Figure 11	Notifications Tab	18
Figure 12	Define new notification Dialog Box	19
Figure 13	Add/Remove Components Dialog Box	20
Figure 14	Add/Remove Destinations Dialog Box	20
Figure 15	Collaboration Definition Wizard (Java) - Adding the Alert OTD	22
Figure 16	Collaboration Editor (Java) - Alert OTD Fields	22
Figure 17	Alert OTD Methods	23
Figure 18	Input to unmarshalFromString	23
Figure 19	Connectivity Map - JMS Topic and Service	23

Introduction

This chapter introduces you to the *eGate Integrator Alert Agent User's Guide*, its general purpose and scope, and its organization. It also provides sources of related documentation and information.

In this chapter

- [“Purpose and Scope” on page 6](#)
- [“Organization of Information” on page 6](#)
- [“Writing Conventions” on page 7](#)
- [“Supporting Documents” on page 7](#)
- [“The SeeBeyond Web Site” on page 8](#)

1.1 Purpose and Scope

The *eGate Integrator Alert Agent User's Guide* describes how to install and use the Alert Agent.

1.2 Organization of Information

This document includes the following chapters:

- **Chapter 1 “Introduction”** introduces you to the *eGate Integrator Alert Agent User's Guide*, its general purpose and scope, and its organization. It also provides sources of related documentation and information.
- **Chapter 2 “Installation”** lists the system requirements for the Alert Agent, and then describes how to install the agent.
- **Chapter 3 “Using the Alert Agent”** provides an overview of the Alert Agent, and then describes how to access and use the agent.

1.3 Writing Conventions

The following writing conventions are observed throughout this document.

Table 1 Writing Conventions

Text	Convention	Example
Button, file, icon, parameter, variable, method, menu, and object names.	Bold text	<ul style="list-style-type: none"> ▪ Click OK to save and close. ▪ From the File menu, select Exit. ▪ Select the logicalhost.exe file. ▪ Enter the timeout value. ▪ Use the getClassname() method. ▪ Configure the Inbound File eWay.
Command line arguments and code samples	Fixed font. Variables are shown in <i>bold italic</i> .	<code>bootstrap -p password</code>
Hypertext links	Blue text	http://www.seebeyond.com

Additional Conventions

Windows Systems

For the purposes of this guide, references to “Windows” will apply to Microsoft Windows Server 2003, Windows XP, and Windows 2000.

Path Name Separator

This guide uses the backslash (“\”) as the separator within path names. If you are working on a UNIX system, please make the appropriate substitutions.

1.4 Supporting Documents

The following SeeBeyond documents provide additional information about eGate Integrator:

- *eGate Integrator System Administration Guide*
- *eGate Integrator User’s Guide*
- *eGate Tutorial*
- *SeeBeyond ICAN Suite Installation Guide*

In addition, the Enterprise Manager online help contains information about the Alert Agent.

1.5 The SeeBeyond Web Site

The SeeBeyond Web site is your best source for up-to-the-minute product news and technical support information. The site's URL is:

<http://www.seebeyond.com>

Installation

This chapter lists the system requirements for the Alert Agent, and then describes how to install the agent.

In this chapter

- [“System Requirements” on page 9](#)
- [“Installing the Alert Agent” on page 9](#)

2.1 System Requirements

The Alert Agent supports two types of delivery channels: e-mail and JMS.

To use the e-mail delivery channel, you must have access to an e-mail server.

To use the JMS delivery channel, you must be using the JMS IQ Manager. Third-party message servers are not supported in this release.

2.2 Installing the Alert Agent

The Alert Agent is installed during the installation of eGate Integrator. Follow the instructions in the *SeeBeyond ICAN Suite Installation Guide* for installing eGate and include the following steps:

- 1 During the procedures for uploading files to the eGate Repository using the Enterprise Manager, after uploading the **eGate.sar** file, select and upload the following file:
 - ♦ **AlertAgent.sar**
- 2 Continue installing eGate Integrator as instructed in the *SeeBeyond ICAN Suite Installation Guide*.

Note: *eGate Integrator allows you to back up the Repository to an external file and restore the Repository from an external file. If you restore the Repository, you must reinstall the Alert Agent. In addition, you will need to recreate any notifications that were previously configured.*

Using the Alert Agent

This chapter provides an overview of the Alert Agent, and then describes how to access and use the agent.

In this chapter

- [“Alert Agent Overview” on page 11](#)
- [“Accessing the Alert Agent” on page 13](#)
- [“Creating Notifications” on page 14](#)
- [“Editing Notifications” on page 24](#)
- [“Deleting Notifications” on page 25](#)

3.1 Alert Agent Overview

You use the Alert Agent in conjunction with the eGate Integrator Enterprise Manager.

Enterprise Manager is a Web-based interface with which you can install and update eGate Integrator, and monitor and manage deployed eGate components. For detailed information on accessing and using Enterprise Manager, see the *eGate Integrator System Administration Guide*.

One feature of Enterprise Manager is the ability to monitor Alerts. An Alert is triggered when a specified condition occurs in a Project component. The condition might be some type of problem that must be corrected. For example, an Alert might indicate that a SeeBeyond Integration Server is no longer running and has probably crashed. In the Monitor component of Enterprise Manager, you can view detailed information about the Alerts and mark them as observed or resolved.

The Alert Agent enables you to send a specified category of Alerts to one or more destinations as the Alerts occur. Alerts that are sent to destinations in this manner are also known as *notifications*.

Note: *The Alert Agent can monitor both predefined Alerts and custom Alerts. The "Collaboration Definitions (Java)" chapter in the eGate Integrator User's Guide describes how to create custom Alerts at design time.*

Figure 1 shows an example of a notification sent by e-mail.

Figure 1 Notification Example

```
Alert type:           Alert
Severity:            CRITICAL
Event ID:            0
Operational state:  STOPPED
Message code:       LH-00007
Message details:    null
Observational state: UNOBSERVED
Listeners notified: False
Physical host name: JSTEIN-D600XP
Environment name:  Environment1
Logical host name:  LogicalHost1
Server type:
Server name:
Component type:
Component name:
Project path of component:
Time this event occurred: Mon Dec 15 17:06:30 PST 2003
Comments:           Check into this as soon as possible!
```

Table 2 lists the message codes and their meanings:

Table 2 Message Codes

Message Code	Meaning
COL-00001	Collaboration <i>name</i> is running.
COL-00002	Collaboration <i>name</i> has stopped.

Table 2 Message Codes

Message Code	Meaning
COL-00003	Collaboration <i>name</i> user-defined alert.
IS-00001	Integration Server <i>name</i> exited.
IS-00002	Integration Server <i>name</i> is already running.
IS-00003	Integration Server <i>name</i> has stopped.
IS-00004	Integration Server <i>name</i> has stopped.
IS-00005	Integration Server <i>name</i> is not running (possibly crashed).
IS-00006	Integration Server <i>name</i> killed.
IS-00007	Integration Server <i>name</i> is started.
LH-00001	Logical Host <i>name</i> exited.
LH-00002	Logical Host <i>name</i> is already running.
LH-00003	Logical Host <i>name</i> started.
LH-00004	Logical Host <i>name</i> stopped.
LH-00005	Logical Host <i>name</i> stopped.
LH-00006	Logical Host <i>name</i> killed.
LH-00007	Logical Host <i>name</i> is not responding.
MS-00001	Message Server <i>name</i> has exited.
MS-00002	Message Server <i>name</i> is already running.
MS-00003	Message Server <i>name</i> started.
MS-00004	Message Server <i>name</i> stopped.
MS-00005	Message Server <i>name</i> has stopped.
MS-00006	Message Server <i>name</i> killed.
MS-00007	Message Server <i>name</i> is not responding.
SNMP-00001	SNMP Agent has been configured.
SNMP-00002	SNMP Agent has not been configured.

In addition, each eWay has a set of message codes.

3.2 Accessing the Alert Agent

You access the Alert Agent from the Monitor component of Enterprise Manager.

To access the Alert Agent

- 1 From the Enterprise Manager GUI, click the **Home** tab and then click the **Monitor** icon. The Monitor appears. In the Environment Explorer on the left side, the Alert Agent node appears (see Figure 2).

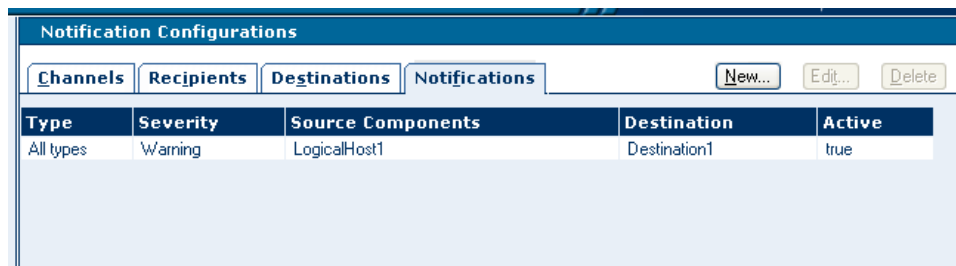
Figure 2 Alert Agent Node



Note: If you did not install the *AlertAgent.sar* file (as described in [Chapter 2](#)), then the Alert Agent node does not appear.

- 2 Click the Alert Agent node. The **Notification Configurations** window appears on the right side (see Figure 3).

Figure 3 Notification Configurations Window



The **Notification Configurations** window is organized into four sections represented by tabs:

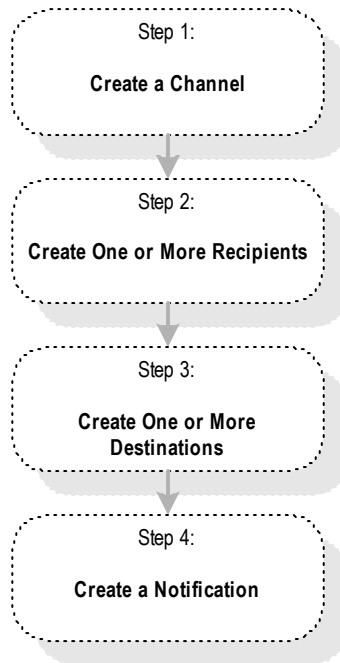
- Channels
- Recipients
- Destinations
- Notifications

If you need to stop the Alert Agent, right-click the node and choose **Stop**. To restart the Alert Agent, right-click the node and choose **Start**.

3.3 Creating Notifications

This section guides you through the process of creating a notification. Figure 4 shows the steps involved.

Figure 4 Creating a Notification



If you created previous notifications, then you might already have the necessary channels, recipients, or destinations. Therefore, you might be able to skip one or more of the first three steps.

If you plan to create a notification that will be sent to a JMS topic in an eGate Project, then you also need to set up the logic for receiving and handling the notification. This task is performed from Enterprise Designer. You might want to set up the logic *before* creating the notification. For more information, see [Handling a Notification in an eGate Project](#) on page 21.

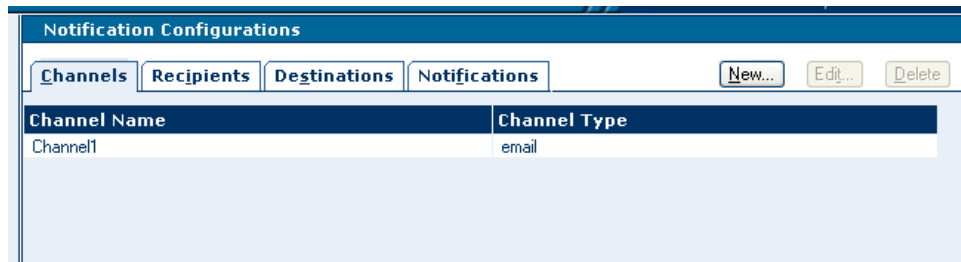
3.3.1 Step 1: Create a Channel

A *channel* is a medium through which notifications are sent. There are two types of channels: e-mail and JMS.

To create a channel

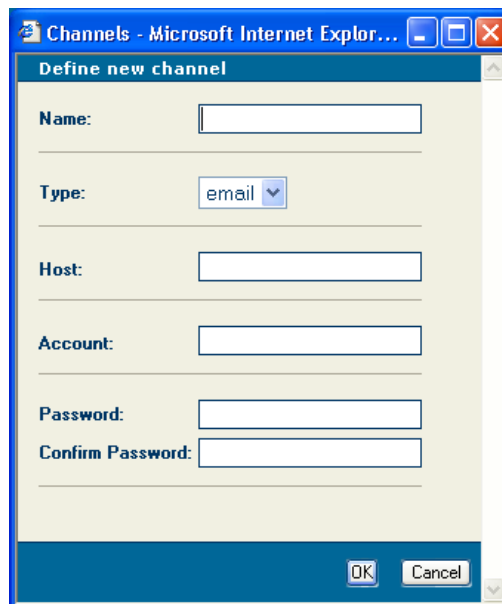
- 1 In the **Notification Configurations** window, click the **Channels** tab.

Figure 5 Channels Tab



- 2 Click **New**. The **Define new channel** dialog box appears.

Figure 6 Define new channel Dialog Box



- 3 In the **Name** field, enter a name for the channel.
- 4 In the **Type** field, select **email** or **JMS**.

Note: If you select **JMS**, then the fields below the **Type** field are replaced by **JMS-related fields**.

- 5 If you selected **email**, then do the following:
 - A In the **Host** field, enter the network name of the e-mail server.

- B In the **Account** field, enter the login name for the e-mail server account that you use to send e-mail notifications.
 - C In the **Password** field, enter the password for the account.
 - D In the **Confirm Password** field, reenter the password for the account.
- 6 If you selected **JMS**, then do the following:
- A In the **JMS Server Host Name** field, enter the fully qualified name of the JMS IQ Manager where the topic is deployed.
 - B In the **JMS Server Port** field, enter the port number that the JMS IQ Manager is listening on.
- 7 Click **OK**.

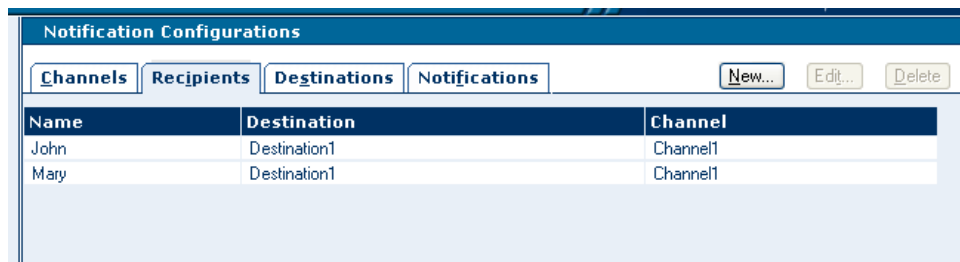
3.3.2 Step 2: Create One or More Recipients

After you create a channel, you create one or more recipients. A recipient is an e-mail address or JMS topic that you can designate to receive notifications. Recipients are grouped into destinations (as described in [“Step 3: Create One or More Destinations” on page 17](#)).

To create a recipient

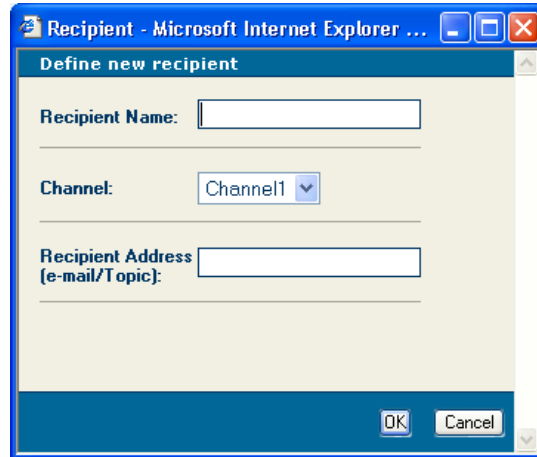
- 1 In the **Notification Configurations** window, click the **Recipients** tab.

Figure 7 Recipients Tab



- 2 Click **New**. The **Define new recipient** dialog box appears.

Figure 8 Define new recipient Dialog Box



- 3 In the **Recipient Name** field, enter the name of the recipient (for example, **John** or **Topic1**).
- 4 In the **Channel** drop-down list, select a channel that you previously defined.
- 5 In the **Recipient Address** field, enter the e-mail address of the recipient or the JMS topic name. The JMS topic name must match the name used in the eGate Project.
- 6 Click **OK**.

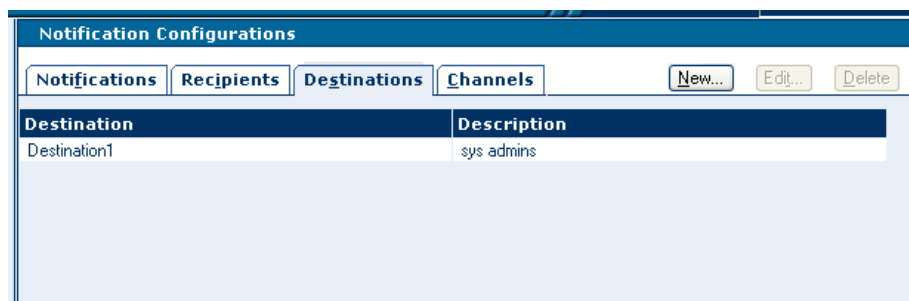
3.3.3 Step 3: Create One or More Destinations

After you create one or more recipients (as described in [“Step 2: Create One or More Recipients” on page 16](#)), you create one or more destinations. A destination is a grouping of one or more recipients. For example, you could group all of the system administrators for an application.

To create a destination

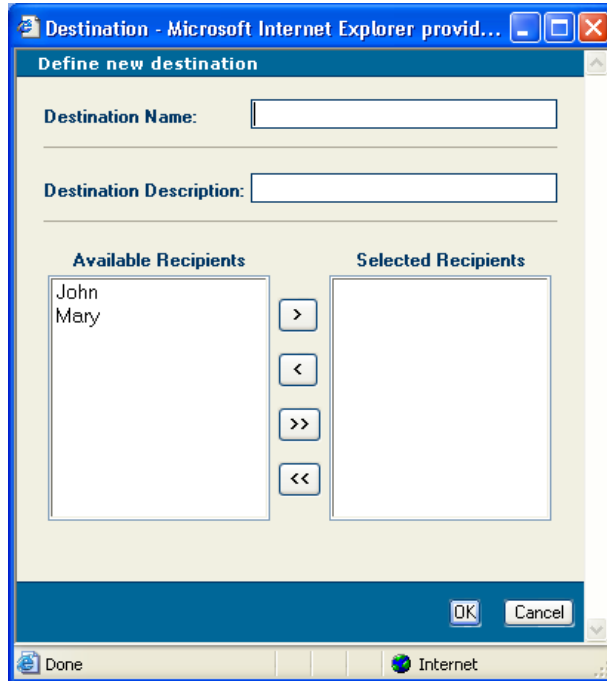
- 1 In the **Notification Configurations** window, click the **Destinations** tab.

Figure 9 Destinations Tab



- 2 Click **New**. The **Define new destination** dialog box appears.

Figure 10 Define new destination Dialog Box



- 3 In the **Destination Name** field, enter a name for the destination.
- 4 In the **Destination Description** field, enter a description of the destination.
- 5 Move one or more recipients from the **Available Recipients** box to the **Selected Recipients** box.
- 6 Click **OK**.

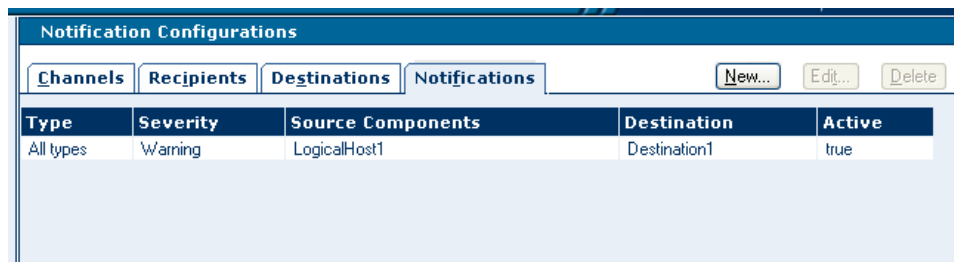
3.3.4 Step 4: Create a Notification

When you create a notification, you specify the type and severity of Alerts, which Project components you want to capture, and where the Alerts will be sent (that is, the destination).

To create a notification

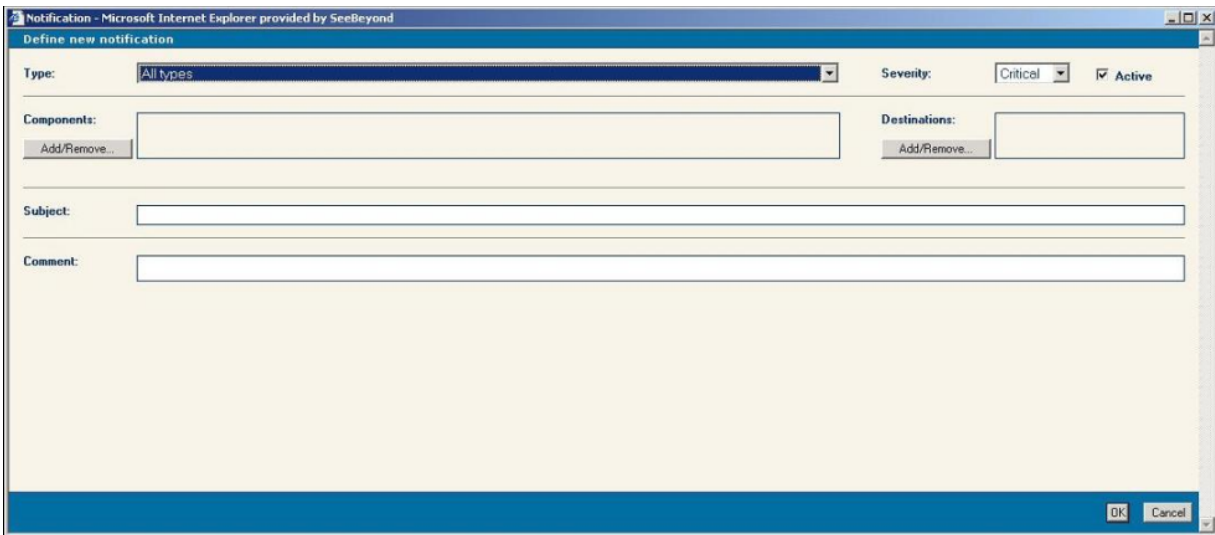
- 1 In the **Notification Configurations** window, click the **Notifications** tab.

Figure 11 Notifications Tab



- 2 Click **New**. The **Define new notification** dialog box appears.

Figure 12 Define new notification Dialog Box

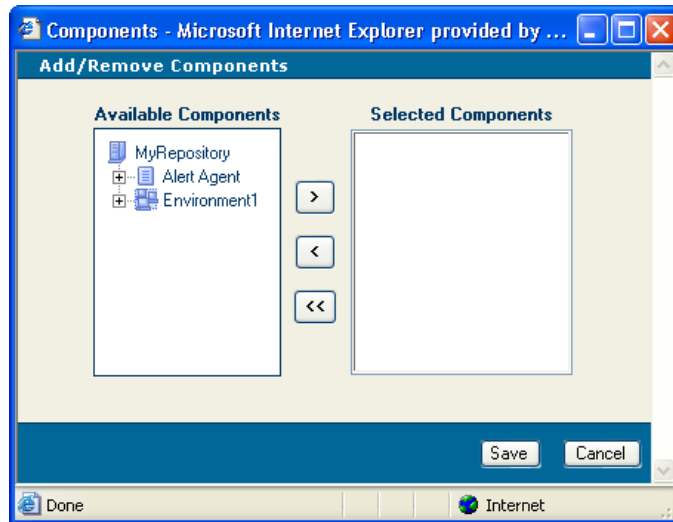


- 3 In the **Type** drop-down list, select the notification type. These types are listed in [Table 2 on page 11](#).
- 4 In the **Severity** drop-down list, select one of the severity levels: Critical, Major, Minor, Warning, or Info.

The severity levels are cumulative:

- ♦ If you select the Info level, the agent captures Alerts from all five levels.
 - ♦ If you select the Warning level, the agent captures Alerts from the Critical, Major, Minor, and Warning levels.
 - ♦ If you select the Minor level, the agent captures Alerts from the Critical, Major, and Minor levels.
 - ♦ If you select the Major level, the agent captures Alerts from the Critical and Major levels.
 - ♦ If you select the Critical level, the agent captures Alerts from the Critical level only.
- 5 The **Active** check box indicates whether the notification is enabled or disabled. By default, the notification is enabled.
 - 6 To specify the components for which notifications will be sent, do the following:
 - A Click the **Add/Remove** button that appears below the **Components** label. The **Add/Remove Components** dialog box appears.

Figure 13 Add/Remove Components Dialog Box

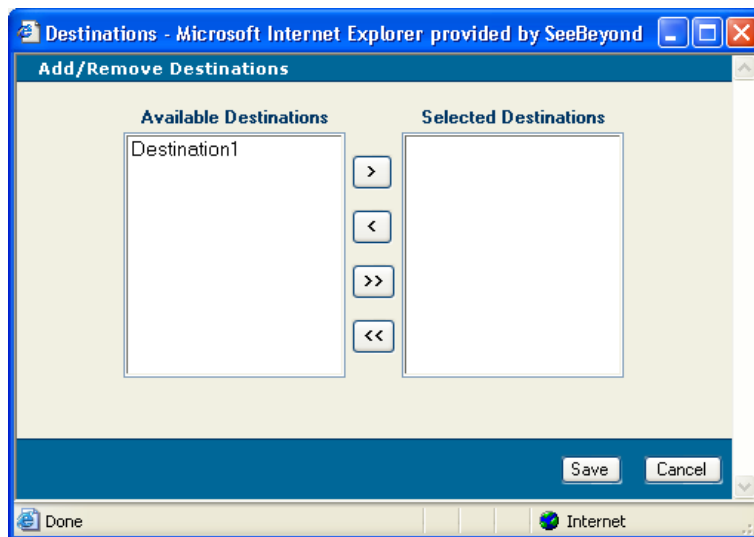


- B Move one or more components from the **Available Components** box to the **Selected Components** box.

Note: Topics and queues are not included in the *Available Components* box.

- C Click **Save**.
- 7 To specify the destinations to which notifications will be sent, do the following:
- A Click the **Add/Remove** button that appears below the **Destinations** label. The **Add/Remove Destinations** dialog box appears.

Figure 14 Add/Remove Destinations Dialog Box



- B Move one or more destinations from the **Available Destinations** box to the **Selected Destinations** box.

- C Click **Save**.
- 8 In the **Subject** field, enter the subject line that will appear in the e-mail message.
- 9 In the **Comment** field, enter a comment to be included in the notification.
- 10 Click **OK**.

3.3.5 Testing the Notification

Now that you have created a notification, the Alert Agent starts checking for the specified conditions. When the conditions occur, a notification similar to the one shown in [Figure 1 on page 11](#) is sent to the recipients.

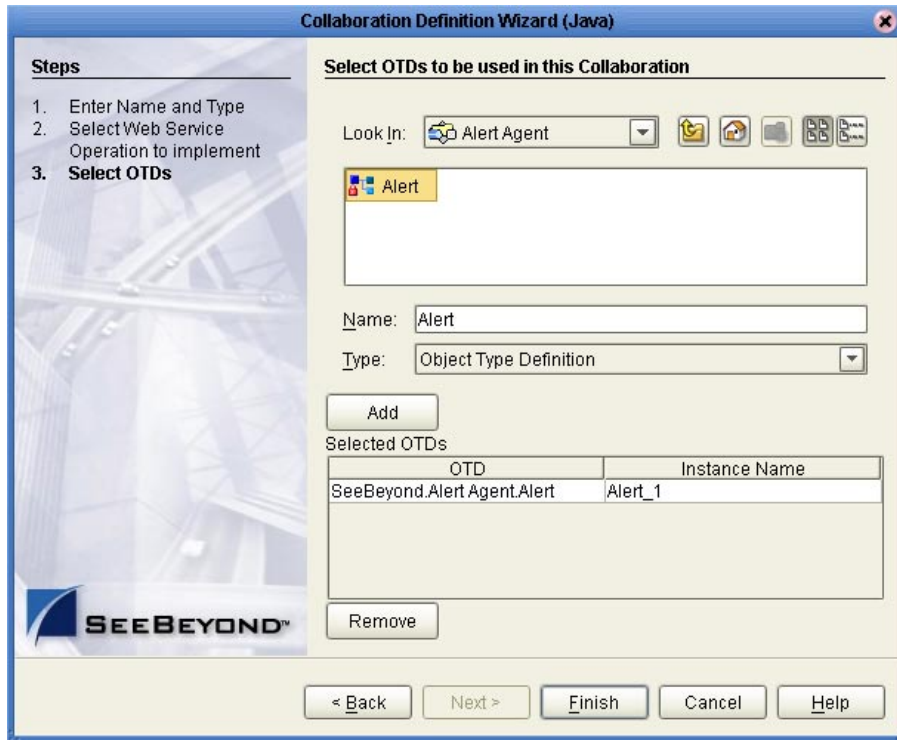
You might want to verify that the notification is working correctly. For example, assume that you created an e-mail notification that is triggered when the Logical Host stops. To test this, stop the Logical Host and confirm that the recipients receive a notification.

3.3.6 Handling a Notification in an eGate Project

As mentioned previously, you can configure a notification so that it is sent to a JMS topic in an eGate Project. eGate provides an Object Type Definition (OTD) for Alerts. You can use this OTD to parse and manipulate the Alert.

When you are performing the steps in Enterprise Designer's Collaboration Definition Wizard (Java), you can select the Alert OTD in **Step 3 (Select OTDs)**. Double-click **SeeBeyond**, **Alert Agent**, and **Alert**. The Alert OTD is added to the Collaboration Definition (see Figure 15). If desired, change the default instance name.

Figure 15 Collaboration Definition Wizard (Java) - Adding the Alert OTD



When you click **Finish**, the Collaboration Editor (Java) appears. The Alert OTD is located in the Business Rules Designer. Expanding the Alert OTD displays the fields (see Figure 16).

Figure 16 Collaboration Editor (Java) - Alert OTD Fields



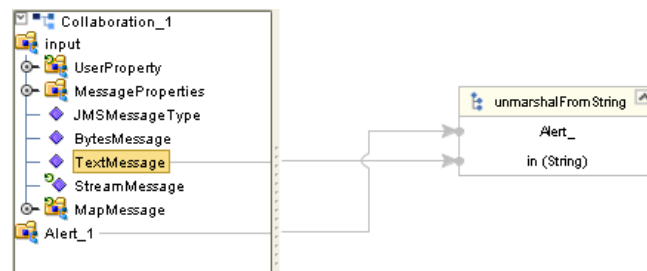
Before you can manipulate the data in the Alert, you must unmarshal the data. Right-click the Alert OTD instance and click **Select a method to call**. A list of methods appears (see Figure 17). Click **unmarshalFromString()**. The **unmarshalFromString** box appears.

Figure 17 Alert OTD Methods



Note that the Alert OTD instance is automatically linked to the box. Expand the input instance and drag the appropriate field to **in (String)** in the **unmarshalFromString** box. Typically, you would use the **TextMessage** field of the JMS OTD (see Figure 18).

Figure 18 Input to unmarshalFromString

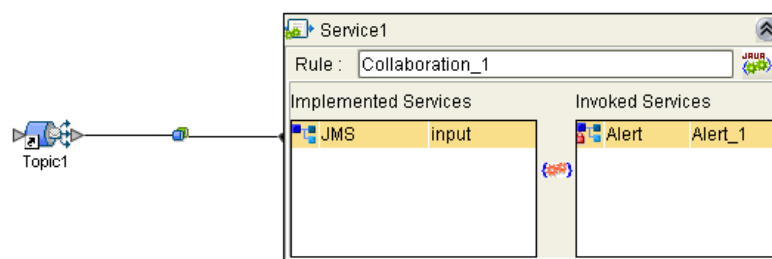


You can now create business rules that manipulate the data.

When finished, you can call the Alert OTD's **marshalToString()** method to serialize the data.

Figure 19 shows a connectivity map in which a Service contains the Collaboration Definition that receives the Alert from a JMS topic.

Figure 19 Connectivity Map - JMS Topic and Service



3.4 Editing Notifications

This section describes how to edit channels, recipients, destinations, and notifications.

To edit a channel

- 1 In the **Notification Configurations** window, click the **Channels** tab.
- 2 Select a channel and click **Edit**. The **Edit channel** dialog box appears.
- 3 Change one or more fields.
- 4 Click **OK**.

To edit a recipient

- 1 In the **Notification Configurations** window, click the **Recipients** tab.
- 2 Select a recipient and click **Edit**. The **Edit recipient** dialog box appears.
- 3 Change one or more fields.
- 4 Click **OK**.

To edit a destination

- 1 In the **Notification Configurations** window, click the **Destinations** tab.
- 2 Select a destination and click **Edit**. The **Edit destination** dialog box appears.
- 3 Change one or more fields.
- 4 Click **OK**.

To edit a notification

- 1 In the **Notification Configurations** window, click the **Notifications** tab.
- 2 Select a notification and click **Edit**. The **Edit notification** dialog box appears.
- 3 Change one or more fields.

Note: *If you clear the **Active** check box, then the notification will stop checking for the specified conditions.*

- 4 Click **OK**.

3.5 Deleting Notifications

This section describes how to delete channels, recipients, destinations, and notifications.

To delete a channel

- 1 In the **Notification Configurations** window, click the **Channels** tab.
- 2 Select a channel and click **Delete**.

To delete a recipient

- 1 In the **Notification Configurations** window, click the **Recipients** tab.
- 2 Select a recipient and click **Delete**.

To delete a destination

- 1 In the **Notification Configurations** window, click the **Destinations** tab.
- 2 Select a destination and click **Delete**.

To delete a notification

- 1 In the **Notification Configurations** window, click the **Notifications** tab.
- 2 Select a notification and click **Delete**.

Index

A

- Active check box 19
- Alert Agent
 - accessing 13
 - installing 9
 - overview 11
 - starting 13
 - stopping 13
 - system requirements 9
- Alert OTD
 - fields 22
 - methods 23
 - selecting 21
- Alert, defined 11
- AlertAgent.sar file 9, 13

C

- channel
 - creating 15
 - defined 15
 - deleting 25
 - editing 24
- Comment field 21
- conventions
 - path name separator 7
 - Windows 7
- Critical level 19
- custom Alerts 11

D

- destination
 - creating 17
 - deleting 25
 - editing 24
- document
 - conventions 7

E

- e-mail server 9

I

- Info level 19
- installing 9

J

- JMS IQ Manager 9
- JMS Server Host Name field 16
- JMS Server Port field 16
- JMS topic
 - sending notification to 14, 21

M

- Major level 19
- marshalToString() method 23
- message codes 11
- Minor level 19

N

- notification
 - creating 14
 - defined 11
 - deleting 25
 - disabling 19
 - editing 24
 - enabling 19
 - example 11
 - testing 21

O

- online help 7

Q

- queues 20

R

- recipient
 - creating 16
 - deleting 25
 - editing 24
- Repository backup and restoration 9

S

- severity levels 19
- subject line 21
- system requirements 9

Index

T

topics 20

troubleshooting

Alert Agent node does not appear 13

Repository backup and restoration 9

U

unmarshalFromString() method 23

user-defined Alerts 11

W

Warning level 19

writing conventions 7