

*SeeBeyond ICAN Suite*

# ePortal Composer Installation and Channel Administration Guide

*Release 5.0.2*



The information contained in this document is subject to change and is updated periodically to reflect changes to the applicable software. Although every effort has been made to ensure the accuracy of this document, SeeBeyond Technology Corporation (SeeBeyond) assumes no responsibility for any errors that may appear herein. The software described in this document is furnished under a License Agreement and may be used or copied only in accordance with the terms of such License Agreement. Printing, copying, or reproducing this document in any fashion is prohibited except in accordance with the License Agreement. The contents of this document are designated as being confidential and proprietary; are considered to be trade secrets of SeeBeyond; and may be used only in accordance with the License Agreement, as protected and enforceable by law. SeeBeyond assumes no responsibility for the use or reliability of its software on platforms that are not supported by SeeBeyond.

SeeBeyond, e\*Gate, and e\*Way are the registered trademarks of SeeBeyond Technology Corporation in the United States and select foreign countries; the SeeBeyond logo, e\*Insight, and e\*Xchange are trademarks of SeeBeyond Technology Corporation. The absence of a trademark from this list does not constitute a waiver of SeeBeyond Technology Corporation's intellectual property rights concerning that trademark. This document may contain references to other company, brand, and product names. These company, brand, and product names are used herein for identification purposes only and may be the trademarks of their respective owners.

© 2003 by SeeBeyond Technology Corporation. All Rights Reserved. This work is protected as an unpublished work under the copyright laws.

**This work is confidential and proprietary information of SeeBeyond and must be maintained in strict confidence.**

Version 20031223224157.

# Contents

---

## Chapter 1

<b>Introduction</b>	<b>9</b>
Document Purpose and Scope	9
<b>Intended Audience</b>	<b>9</b>
<b>Organization of information</b>	<b>9</b>
<b>Writing Conventions</b>	<b>10</b>
Additional Conventions	10
<b>Online Documentation</b>	<b>10</b>
<b>The SeeBeyond Web Site</b>	<b>11</b>

---

## Chapter 2

<b>About ePortal Composer</b>	<b>12</b>
<b>About Portals</b>	<b>12</b>
About Channels	13
Authentication	13
Personalization	14
Web-based Portal Administration and Management	14

---

## Chapter 3

<b>Installing ePortal Composer</b>	<b>16</b>
<b>Prerequisites for Windows and UNIX</b>	<b>16</b>
Web Server	16
Application Components	16
Before you begin	17
<b>Installing ePortal Composer on Windows</b>	<b>17</b>
Upload the ePortal.sar file	17
Downloading and Extracting the ePortal Files	18
Creating the Run-time Environment	18
Creating Users	20
Starting the Logical Host on Windows	23
Logical Host Startup Parameters	23
Before You Begin	24
Editing the ePortal Properties File	25

Deploying ePortal	25
Validating the Installation of ePortal Composer	26
Locating the Integration Server Port on the Logical Host	26
LDAP Support	28
Running ePortal After the Installation	29
<b>Installing ePortal Composer on UNIX</b>	<b>29</b>
Editing the ePortal Properties File	29
Starting the Logical Host	30
Validating the Installation	31
Running ePortal After the Installation	31
<hr/>	
<b>Chapter 4</b>	
<b>Portal Administration: Managing Channels</b>	<b>32</b>
Before you Begin	32
<b>Publishing a New Channel</b>	<b>32</b>
<hr/>	
<b>Chapter 5</b>	
<b>Portal Administration: Personalization</b>	<b>39</b>
Before you Begin	39
<b>Personalizing a View</b>	<b>39</b>
Adding a Channel to a View	40
Adding a Tab to a Channel View	42
Modifying a Tab	43
Adding a Column to a Channel View	44
Modifying a Column	44
Changing the Skin of a Channel View	44
To Change the Skin of a Channel User's Default View	44
<hr/>	
<b>Chapter 6</b>	
<b>Portal Administration: Managing Groups</b>	<b>46</b>
Before you Begin	46
<b>Creating and Modifying Groups</b>	<b>46</b>
About Groups	46
Adding a Group	47
Modifying an Existing Group	48
Assigning Permissions	49
Searching Groups	51
<hr/>	
<b>Chapter 7</b>	
<b>Enabling the Search Module</b>	<b>52</b>
About the ePortal Search Engine	52
Creating a Channel for the Search Facility	54

Chapter 8

**User Login Authentication**

**60**

# List of Figures

Figure 1	ePortal Composer Within the ICAN Suite	13
Figure 2	Personalized Channels	14
Figure 3	Creating a New Environment	19
Figure 4	Creating a New Logical Host	19
Figure 5	Creating a New Integration Server	19
Figure 6	Adding the Integration Server to the Logical Host	20
Figure 7	Saving the ePortal Environment	20
Figure 8	User Management Context Menu	21
Figure 9	Adding Users in Enterprise Designer	21
Figure 10	Adding Roles in Enterprise Designer	22
Figure 11	Adding the “administration” Role to the Administrator User	23
Figure 12	Integration Server Properties menu	27
Figure 13	Web Server Properties: Port Number	27
Figure 14	Web Server Properties: xml Security Realm	28
Figure 15	Publishing a channel	33
Figure 16	Specifying an inline frame	33
Figure 17	Specifying general channel settings	34
Figure 18	Setting inline frame parameters	35
Figure 19	Setting channel controls	35
Figure 20	Assigning a category	36
Figure 21	Assigning a group	37
Figure 22	Reviewing channel parameters	38
Figure 23	Defining user preferences	40
Figure 24	New Channel link	41
Figure 25	Channel categories list	41
Figure 26	Adding channels	42
Figure 27	Creating a tab	43
Figure 28	Choosing a skin	45
Figure 29	Creating a new sub-group	47
Figure 30	Modifying a group	49
Figure 31	Assigning permissions to a group	50
Figure 32	Assigning group-level permissions	51

## List of Figures

Figure 33	ePortal Composer Search Facility: Upload	52
Figure 34	ePortal Composer Search Facility: Query	53
Figure 35	ePortal Composer Search Facility: Query Results	53
Figure 36	User Preferences: Adding a New Channel	54
Figure 37	User Preferences: Selecting a Category	54
Figure 38	User Preferences: Selecting a Channel	55
Figure 39	User Preferences: Setting the Frame Height	55
Figure 40	User Preferences: Adding a New Tab	56
Figure 41	User Preferences: Naming the Search Tab	57
Figure 42	User Preferences: Submitting Choices	58
Figure 43	User Preferences: Defining Search as the Default Tab	59
Figure 44	ePortal Composer Login Authentication	60

# List of Tables

Table 1	Writing Conventions	10
Table 2	Command Arguments for Bootstrap	23



# Introduction

*ePortal Composer (ePortal)*, SeeBeyond's Web portal application program, provides a rich set of Web-based tools, which enable the Web developer/administrator to create Web portals that unify business information and personalize the portal experience based on the user's profile.

Through a Web portlet, called a channel, ePortal enables users to simultaneously view multiple eVision applications, other ICAN-generated GUIs, and specified Web-enabled enterprise content.

## 1.0.1 Document Purpose and Scope

The *ePortal Composer Installation and Channel Administration Guide* explains how to install, setup, and use ePortal to create, manage, and personalize Web channels. This document assumes that you have installed the SeeBeyond eVision Studio application and that all the required software dependencies, such as SeeBeyond Integration Server, are installed and in the required locations on a designated server.

---

## 1.1 Intended Audience

This guide is intended for experienced computer users who have the responsibility of helping to set up and maintain a fully functioning ICAN Suite system. This person must also understand any operating systems on which eGate will be installed (Windows or UNIX) and must be thoroughly familiar with Web browsers and Windows-style GUI operations.

---

## 1.2 Organization of information

The *ePortal Composer Channel Administration Guide* provides the following information:

- Hardware, software, and database requirements
- Installation instructions for a variety of operating systems
- An overview of ePortal's application architecture
- A description of ePortal's features

- How to use the ePortal Composer Web console to create and administer channels

## 1.3 Writing Conventions

The following writing conventions are observed throughout this document.

**Table 1** Writing Conventions

Text	Convention	Example
Button, file, icon, parameter, variable, method, menu, and object names.	<b>Bold</b> text	<ul style="list-style-type: none"> <li>▪ Click <b>OK</b> to save and close.</li> <li>▪ From the <b>File</b> menu, select <b>Exit</b>.</li> <li>▪ Select the <b>logicalhost.exe</b> file.</li> <li>▪ Enter the <b>timeout</b> value.</li> <li>▪ Use the <b>getClassName()</b> method.</li> <li>▪ Configure the <b>Inbound</b> File eWay.</li> </ul>
Command line arguments and code samples	Fixed font. Variables are shown in <b>bold italic</b> .	<code>bootstrap -p <b>password</b></code>
Hypertext links	<b>Blue</b> text	For more information, see <a href="#">“Writing Conventions” on page 10.</a>

### Additional Conventions

#### Windows Systems

For the purposes of this guide, references to “Windows” will apply to Microsoft Windows Server 2003, Windows XP, and Windows 2000.

#### Path Name Separator

This guide uses the backslash (“\”) as the separator within path names. If you are working on a UNIX system, please make the appropriate substitutions.

## 1.4 Online Documentation

The documentation for the SeeBeyond ICAN Suite is distributed as a collection of online documents. These documents are viewable with the Acrobat Reader application from Adobe Systems. Acrobat Reader can be downloaded from:

<http://www.adobe.com>

**Note:** When downloading Acrobat Reader, make sure to download the version that includes the option for searching .pdf files—Acrobat Reader with Search. This version is required to view the searchable master index.

---

## 1.5 The SeeBeyond Web Site

The SeeBeyond Web site is your best source for up-to-the-minute product news and technical support information. The site's URL is:

<http://www.seebeyond.com>

# About ePortal Composer

This chapter provides an overview of ePortal.

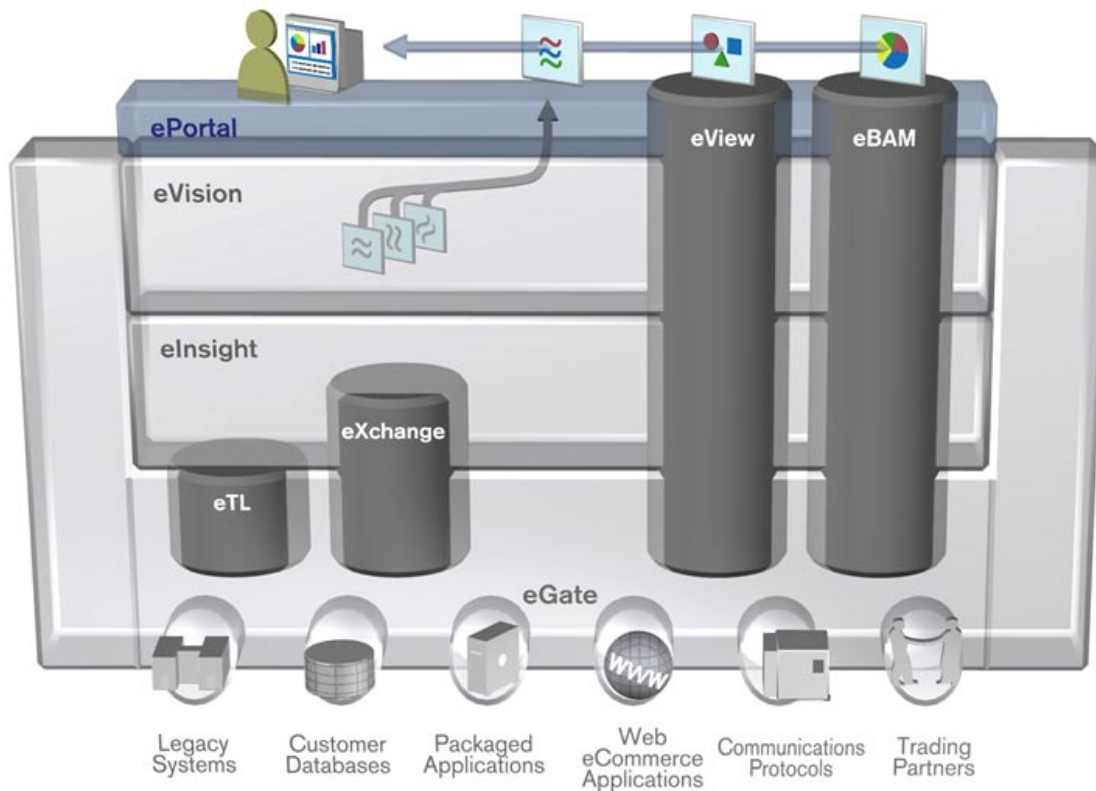
---

## 2.1 About Portals

*ePortal Composer* leverages the ICAN Suite by enabling enterprise-wide access to business processes from a single point of entry: a portal. A portal is a Web site that serves as a gateway for Web-based services and applications. A portal allows the organization to present a single, unified view of enterprise data and applications to employees, customers, and partners. Multiple URLs can be assigned to *channels*, which are aggregated within the portal and then collectively presented to users.

With ePortal Composer, administrators can create personalized channels with targeted views of business information. For example, a channel allows the user to log into a system, review and complete assigned tasks, and monitor the progress of business activities. Through channels, users can interact with running business processes, while working with only the information that they need to see. In the ICAN Suite, business processes can be monitored in real-time with Enterprise Manager, and eVision Web applications can be executed, both within their individual channels. How ePortal Composer is integrated within the ICAN Suite shown in [Figure 1 on page 13](#).

Figure 1 ePortal Composer Within the ICAN Suite



## 2.1.1 About Channels

ePortal Composer allows administrator-level personnel to create, manage, personalize, and publish channels. With ePortal Composer, administrators can create visually appealing Web connections to eVision applications, allowing users to perform real-time interaction with SeeBeyond ICAN Suite run-time assets, or with any other URL or Web application.

Channels are assigned to channel *categories*. A category is a collection of channels that logically belong together; for example, channels that have a related purpose or dependency should be assigned to the same category.

## Authentication

ePortal Composer enables authentication of user IDs and passwords at login. User attributes such as login ID, password (credential), and properties such as first and last names, e-mail address, and other user profile information are maintained in a persistent data storage area.

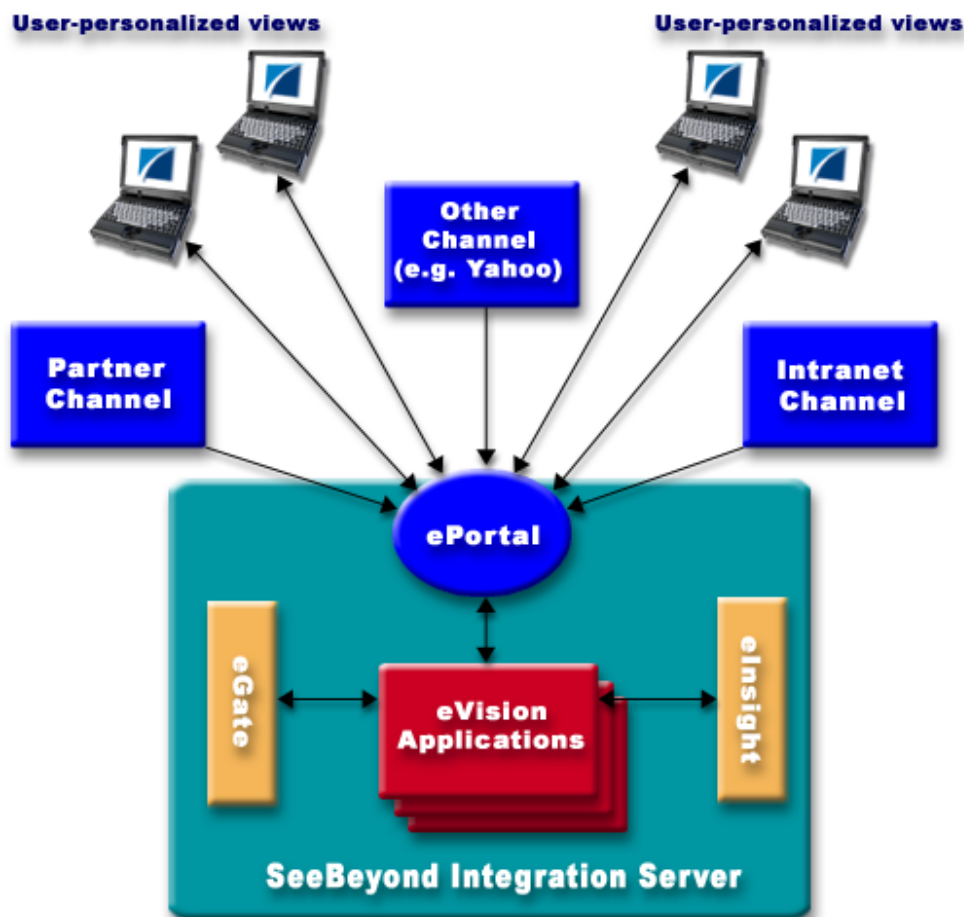
ePortal authenticates users via the host Web server's authentication mechanism. Other applications in the same realm may not require a user to log in again.

## Personalization

Users are allowed personalization privileges, which enables them to specify the channels that they want to see in a channel layout; however, administrators can restrict access to the personalization tools so that only administration-level personnel can create channel layouts and configure channel options.

Portals may comprise several URLs and Web applications—“portlets” with personalized content called *channels*—which are presented within a single, familiar Web interface. See Figure 2.

Figure 2 Personalized Channels



## Web-based Portal Administration and Management

Under categories, administrators can orchestrate channel access using the groups, users, and roles defined in the Enterprise Designer.

ePortal Composer provides Web-based wizards that guide the administrator through the process of channel configuration and management; for example:

- The channel administrator creates channels to be made accessible in the portal. (A channel can access content from any available URL source.)
- The administrator assigns the channel to a category.

ePortal Composer supports any combination of URLs, and simplifies the end-user's access to application resources, Web content, workflow, e-mail, content management systems, and packaged applications such as ERP and CRM.

# Installing ePortal Composer

This chapter describes how to install ePortal Composer and the supporting run-time components on the Windows and UNIX operating systems.

ePortal supports the following:

- Windows 2000 and XP
- Solaris 8 and 9
- AIX 5.0 and 5.1
- HP/UX 11, 11i and TRU64 5.1a
- Red Hat Linux 8
- Red Hat Linux Advanced Server 2.1

## This Chapter Includes

- [“Prerequisites for Windows and UNIX”](#)
- [“Installing ePortal Composer on Windows” on page 17](#)
- [“Installing ePortal Composer on UNIX” on page 29](#)

---

## 3.1 Prerequisites for Windows and UNIX

The following is a list of the application, configuration, and run-time components that are required for the ePortal installation.

### Web Server

ePortal must be installed on a Logical Host that is running on a SeeBeyond Integration Server.

**Note:** *To install ePortal on a Logical Host that is running on a SeeBeyond Integration Server, your site must have an active installation of eGate Integrator.*

### Application Components

- An installed license for eGate Integrator and ePortal Composer
- **ePortal.war** (the ePortal application Web archive file)



- **search.war** (the ePortal search facility Web archive file)
- **eportal.properties** (the configuration file for ePortal run-time properties)

### 3.1.1 Before you begin

Installing ePortal requires manual procedures on both the Windows and UNIX operating systems. For example:

- After downloading, the .war files must be manually dropped into the run-time environment.
- The application properties file must be edited using a text editor such as **Notepad** (Windows) or **vi** (UNIX).
- For Windows, an archive utility such as WinZip is required.

---

## 3.2 Installing ePortal Composer on Windows

This section describes how to install ePortal Composer on the Windows operating system.

### 3.2.1 Upload the ePortal.sar file

- 1 Start SeeBeyond Integration Server.
- 2 Start your browser.
- 3 To start **Enterprise Manager**, on the **Address** line, type:

**http://<hostname>:<portnumber>**

where:

*hostname* is the host name or the IP address of the server where you installed the Repository, not the name of the Repository itself, and

*portnumber* is the port number you specified when you installed the Repository.

**Note:** *The system must be able to resolve the host name to an IP address using DHCP or any other name resolution protocol.*

The **SeeBeyond Customer Login** window of the Enterprise Manager appears. Enterprise Manager serves as an update center, management center, and a dashboard to gain access to available applications.

- 4 Enter your **username** and **password** and click **Login**.

**Note:** *This is your ICAN administrator username and password, not your username and password. See the **Readme.txt** file for the username and password.*

- 5 Click the **ADMIN** tab to begin the process of selecting and uploading ePortal Composer files to the Repository.
- 6 On the **Upload Component Manifest** window, click **Browse**.
- 7 Navigate to the **ProductsManifest.xml** file and select the file.
- 8 Click **Submit**.

The **Admin** page will reappear with a list of ICAN products extracted from the Products Manifest file.

- 9 Using the **Browse** button on the product list, browse to the **ePortal.sar** file.
- 10 Select the file.
- 11 Click **Upload Now**.
- 12 Wait until the progress bar stops.

### 3.2.2 Downloading and Extracting the ePortal Files

- 1 When the upload is finished, click the **DOWNLOADS** tab.
- 2 On the **DOWNLOADS** page, click **ePortal**.
- 3 On the **File Download** dialog box, click **Open**.
- 4 Using the archive utility to create the **\eportal** directory, extract the contents of the **ePortal.zip** file onto your computer, for example:

**c:\eportal**

- 5 The extraction process will create a folder named **eportal** and load the following ePortal components into it:

- **search.war**
- **ePortal.war**
- **README.txt**
- **eportal.properties**

### 3.2.3 Creating the Run-time Environment

To run the ePortal application, you need a run-time environment containing a SeeBeyond Integration Server. A deployment profile is not required.

In this procedure, you will create the run-time environment, which consists of:

- A Logical Host (the run-time platform)
- An Integration Server (provides application run-time services)

ePortal does not require a Deployment Profile.

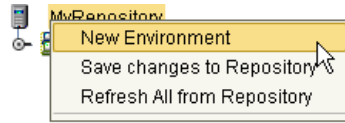
#### To Create the Environment

- 1 In the Enterprise Designer, click the **Environment Explorer** tab.

- 2 In the Enterprise Explorer, right-click the **Repository** icon and on the context menu, select **New Environment**.

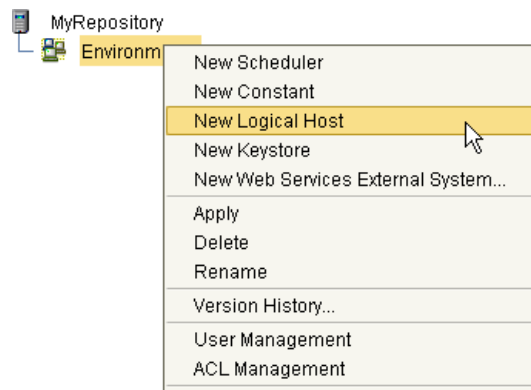
The **Environment** name defaults to **Environment1**. You can accept the default name. See Figure 3.

**Figure 3** Creating a New Environment



- 3 Right-click the new **Environment**, and on the context menu, select **New Logical Host**. See Figure 4 on page 19.

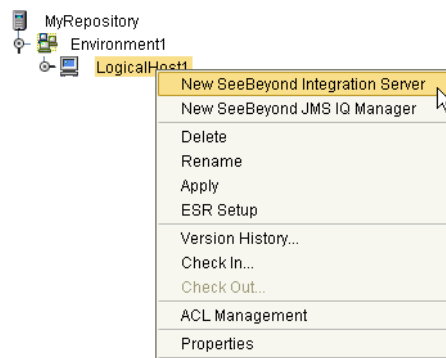
**Figure 4** Creating a New Logical Host



The **Logical Host** name defaults to **LogicalHost1**. You can accept the default name.

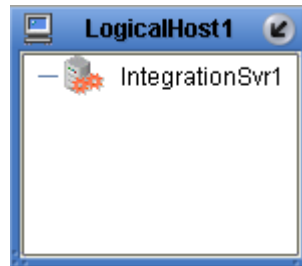
- 4 Right-click the **Logical Host** and on the context menu, select **New SeeBeyond Integration Server**. See Figure 5.

**Figure 5** Creating a New Integration Server



The **Integration Server** name defaults to **IntegrationSvr1**. You can accept the default name. See Figure 6 on page 20.

**Figure 6** Adding the Integration Server to the Logical Host



- 5 On the Enterprise Designer toolbar, click **Save**. See Figure 7.

**Figure 7** Saving the ePortal Environment



### 3.2.4 Creating Users

The ePortal run-time environment requires that you have three users defined: **Administrator**, **guest**, and **template**. These users will provide the initial templates at login.

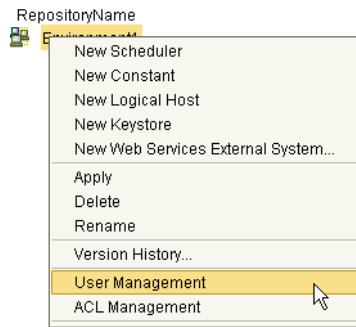
- The **Administrator** user must have the role: **administration** (note character case).
- The **guest** and **template** users must have the role: **all**.

**Note:** You create additional users after ePortal is installed and operating on a Logical Host. For the new user and role definitions to take effect, you must restart the Logical Host, or while the Logical Host is running, right-click the Environment name and on the context menu, click **Apply**.

#### To Create the Guest and Template Users

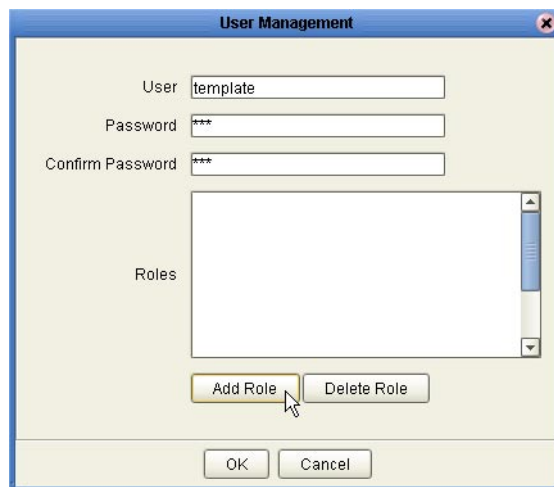
- 1 Start the **Enterprise Designer**.
- 2 At the bottom of the Enterprise Designer window, click the **Environment Explorer** tab.
- 3 In the **Environment** tree, click the **Environment** (the Environment name) that you created for ePortal.
- 4 On the context menu, click **User Management**. See [Figure 8 on page 21](#).

**Figure 8** User Management Context Menu



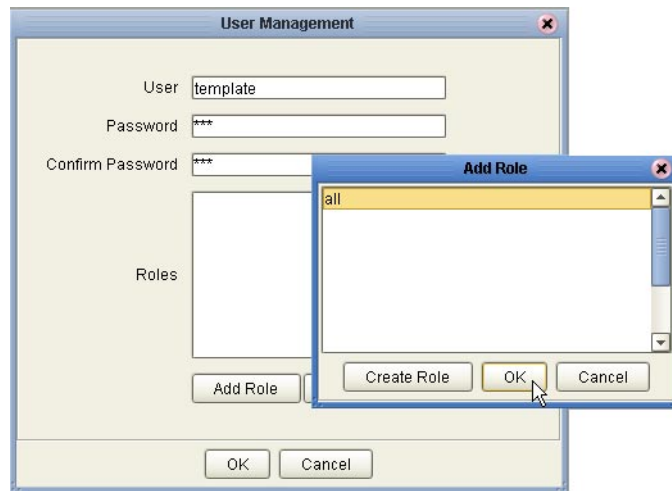
- 5 On the **User Management** dialog box, click **Add**.
- 6 In the **User** box, type **template**.
- 7 In the **Password** box, type a password (for example **STC**), and then confirm the password. See Figure 9.

**Figure 9** Adding Users in Enterprise Designer



- 8 Click **Add Role**.
- 9 Select **all**.
- 10 On the **User Management** dialog box, click **OK**. See [Figure 10 on page 22](#).

**Figure 10** Adding Roles in Enterprise Designer



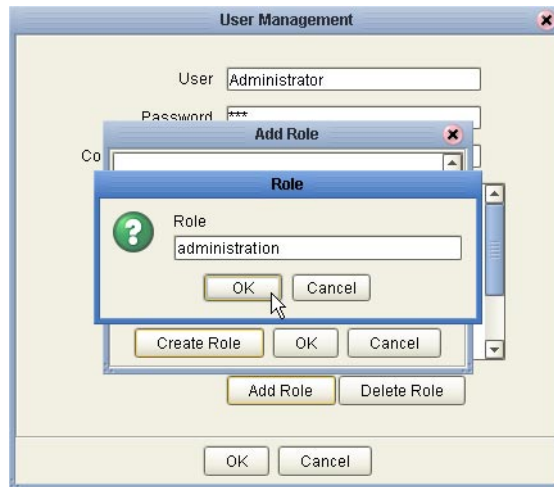
The **template** user will be added to the list of users with the role **all**.

- 11 Repeat the **User Management** procedure to create the **guest** user with the role **all**.
- 12 When you are finished adding the **template** and **guest** users, on the **User Management** dialog box, click **OK**.

#### To Add the "administratio" Role to the Administrator User

- 13 In the **Environment** tree, click the **Environment** (the Environment name) that you created for ePortal.
- 14 On the context menu, click **User Management**. See [Figure 8 on page 21](#).
- 15 On the **User Management** dialog box, click **Administrator**, click **Modify**, and then click **Add Role**.
- 16 On the **Add Role** dialog box, click **Create Role**.
- 17 On the **Role** dialog box, type **administration**, and then click **OK**. See [Figure 11 on page 23](#).

**Figure 11** Adding the “administration” Role to the Administrator User



- 18 On the **Add Role** dialog box, click **OK**.
- 19 On the **User Management** dialog box, click **OK**, and then click **Close**.

If you wish to create additional users, you should do so before continuing to the next procedure: “Starting the Logical Host on Windows”.

### 3.2.5 Starting the Logical Host on Windows

You start the Logical Host by opening a **Command Prompt** and typing a command on the command line which includes a string of required, optional, and initial (first-time only) command line arguments appended to the startup command. The startup command string uses the following syntax:

`<path>\logicalhost\bootstrap\bin\bootstrap <arguments>`

For example, the command

`c:\ican50\logicalhost\bootstrap\bin\bootstrap -h`

displays Help text that explains the command line arguments in detail.

### Logical Host Startup Parameters

The startup command syntax is as follows:

`bootstrap arguments`

**Table 2** Command Arguments for Bootstrap

Parameter	Description	Req/Opt
<code>-d debug</code>	Overrides bootstrap sequence. Displays all cached (default) argument values	Optional
<code>-e environment name</code>	The name of the Environment to which this Logical Host belongs.	Required (first time only)

**Table 2** Command Arguments for Bootstrap (Continued)

Parameter	Description	Req/Opt
-h <i>help</i>	Overrides bootstrap sequence. Displays the usage report.	Optional
-i <i>id</i>	The user ID used for accessing the Repository. Note that the user ID is the same as the username, and that the Administrator can set up more than one user ID.	Required (first time only)
-l <i>logicalhost name</i>	The name of this Logical Host.	Required (first time only)
-n <i>physical host name</i>	The name of this Physical Host.	Required (first time only)
-p <i>password</i>	The password used for accessing the Repository.	Required (first time only)
-r <i>repository URL</i>	The root URL for the Repository containing the Logical Host data.	Required (first time only)

**Note:** *Required (first time only)* indicates that the argument is required the first time you start the Repository. You do not need to use it again unless you change the name of the Logical Host.

## Before You Begin

Make sure that the Repository Server is running. The Logical Host will not start without a Repository Server.

### To start the Logical Host

- 1 On your desktop, select **Start**, and point to **Run**.
- 2 In the **Run** dialog box, to open a **Command Prompt**, type **cmd**.
- 3 Change to the Logical Host **\bin** directory, for example:

**c:\ican50\logicalhost\bootstrap\bin**

- 4 To start the Logical Host *for the first time*:

On the **command line**, run the **bootstrap** command and include all of the required parameters described in **“Command Arguments for Bootstrap” on page 23**.

- 5 If you are starting the Logical Host at any time *after you have finished the installation*:

Using Windows, explore to **c:\ican50\logicalhost\bootstrap\bin**, and double-click **bootstrap.bat**.



### 3.2.6 Editing the ePortal Properties File

- 1 Explore to the folder where you installed the ePortal files.
- 2 Using a text editor, edit the **eportal.properties** file.
- 3 Locate the following line:

```
integration_server_name=IntegrationSvr1
```

- 4 If you named the ePortal Integration Server anything *other* than the default name, change **IntegrationSvr1** to the correct name of your Integration Server.
- 5 Locate the following line:

```
internal_db_data_directory=/tmp/eportal
```

- 6 Using forward slashes, change **/tmp/eportal** to a directory name that reflects the content of that directory (internal database files), for example:

**/ePortal/dbdata** (On Windows, the root is assumed)

- 7 Locate the following line:

```
indexing_data_directory=/tmp/index_data
```

- 8 Using forward slashes, change **/tmp/index\_data** to a directory name that reflects the content of that directory (index and search engine files), for example:

**/ePortal/index** (On Windows, the root is assumed)

- 9 Save the **eportal.properties** file.

- 10 Copy the **eportal.properties** file to following location:

```
< c:\ican50\logicalhost>\stcis\lib\endorsed
```

where:

**c:\ican50\logicalhost** is the drive and directory for the Logical Host.

### 3.2.7 Deploying ePortal

To deploy the ePortal application files do the following:

- 1 Using Windows, copy the **eportal.properties** file to the Logical Host and drop it into the following directory:

```
< c:\ican50\logicalhost>\stcis\lib\endorsed
```

where:

**c:\ican50\logicalhost** is the drive and directory for the Logical Host.

- 2 Copy the **ePortal.war** and **search.war** files to the Logical Host deployment directory, for example:

```
< c:\ican50\logicalhost>\stcis\deploy\new\<servername>
```

where:

**c:\ican50\logicalhost** is the drive and directory for the Logical Host, and

**servername** is the name of the Integration Server running on the Logical Host.

**Note:** *There can be more than one Integration Server running on the Logical Host. Make sure you explore to the specific Integration Server that you specified for ePortal Composer.*

- 3 Watch the .war files in the directory. If you completed all of the preceding steps correctly, the two files will disappear, one after the other. Depending on machine speed, this may take a few moments. When the files are no longer visible in the `<servername>` directory, they have been deployed onto the Integration Server and ePortal Composer is ready to run.

### 3.2.8 Validating the Installation of ePortal Composer

This procedure verifies that the ePortal application, the Logical Host, and the ePortal database are all running, and confirms that ePortal Composer has been successfully installed.

- 1 Start your browser.
- 2 On the **Address** line, type the following URL:

**`http://<localhost>:<port>/ePortal/`**

where:

*localhost* is the name of the host machine, and

*port* is the port number assigned to the Integration Server on the Logical Host.

For example:

**`http://localhost:18003/ePortal/`**

In a successful installation, you will see the ePortal **login** screen.

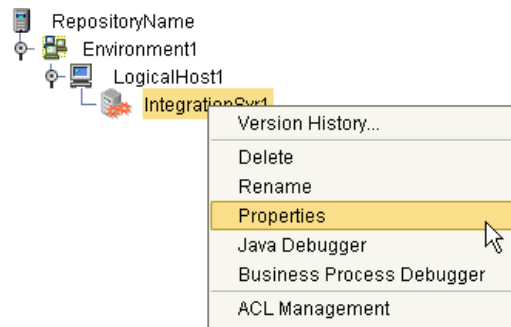
- 3 On the **login** screen, log in as Administrator as follows:  
username: **Administrator**  
password: **STC**

### Locating the Integration Server Port on the Logical Host

On the Logical Host, if **18003** is not the Integration Server port number that you are using, and you want to determine the correct port number, do the following:

- 1 Start **Enterprise Designer**.
- 2 In Environment Explorer, expand the **Environment** nodes as follows:  
**Repository > Environment > LogicalHost > IntegrationServer**
- 3 Right-click the **Integration Server** icon.
- 4 On the context menu, click **Properties**. See [Figure 12 on page 27](#).

**Figure 12** Integration Server Properties menu



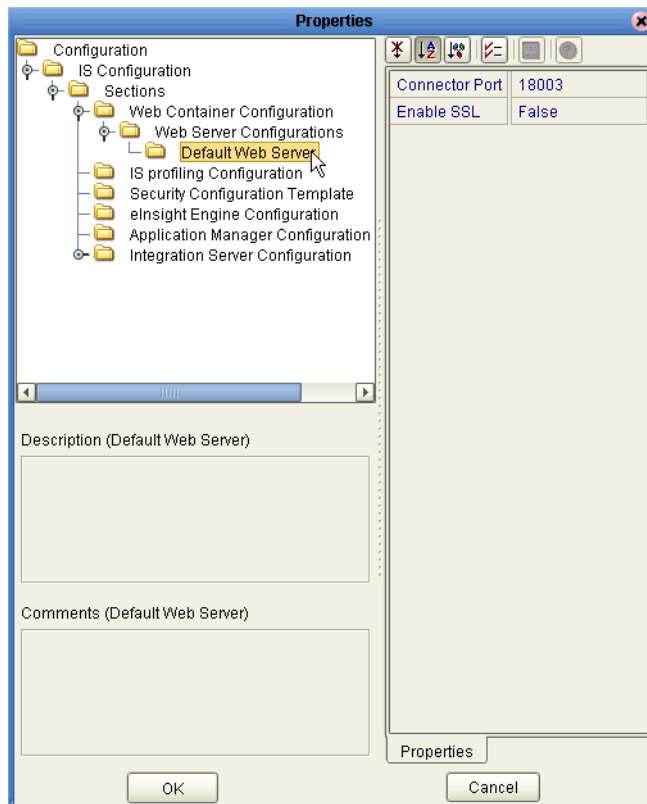
5 In the upper-left pane of the **Properties** dialog box, expand the **Configuration** nodes as follows:

**Configuration > IS Configuration > Sections > Web Container Configurations**

6 Click the **Default Web Server** folder.

In the right pane, the **Connector Port** number will be displayed (usually 18003). This is the number to use when you type the startup command in your browser to start ePortal. See Figure 13.

**Figure 13** Web Server Properties: Port Number



### 3.2.9 LDAP Support

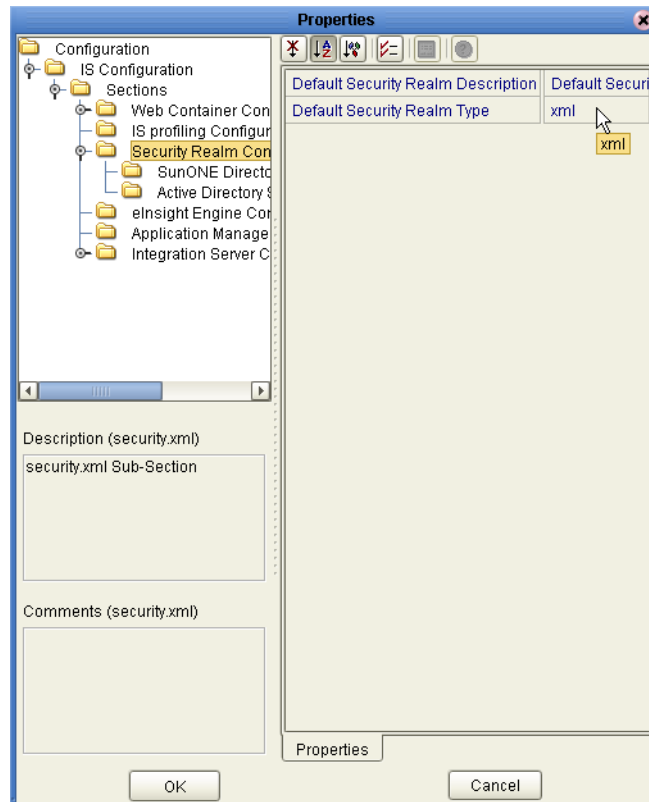
ePortal *does not* support the LDAP protocol for authorization; the default Security Realm Type must be set to XML (the default when the Integration Server is created). If the value is set to either **SunOne Directory** or **Active Directory Services**, ePortal will not function correctly.

- 1 Start **Enterprise Designer**.
- 2 In Environment Explorer, expand the **Environment** nodes as follows:  
**Repository > Environment > LogicalHost > IntegrationServer**
- 3 Right-click the **Integration Server** icon.
- 4 On the context menu, click **Properties**.
- 5 In the upper-left pane of the **Properties** dialog box, expand the **Configuration** nodes as follows:

**Configuration > IS Configuration > Sections > Security Realm Configurations**

In the right pane, the **Default Security Realm** setting will be displayed. It should be set to **xml**. If this is not the case, click the blank area to the right of the xml text, and reset the value to **xml**. See Figure 14.

**Figure 14** Web Server Properties: xml Security Realm



## 3.2.10 Running ePortal After the Installation

To run ePortal Composer in subsequent sessions, do the following:

- 1 Start the Logical Host. See [“Starting the Logical Host” on page 30](#).
- 2 Log into ePortal. See [“Validating the Installation of ePortal Composer” on page 26](#).

**Note:** *Once the .war files have been deployed, you do not need to redeploy them to start the Logical Host.*

---

## 3.3 Installing ePortal Composer on UNIX

- 1 On your UNIX machine, change to the directory where you want the ePortal files to be reside.
- 2 To create a directory for the ePortal files, type the following command:  

```
mkdir ePortal
```
- 3 On a Windows machine, download and extract the ePortal files. See [“Installing ePortal Composer on Windows” on page 17](#).
- 4 Using FTP or a shared file system, copy the following files into the **ePortal** directory on your UNIX machine:
  - **search.war**
  - **ePortal.war**
  - **README.txt**
  - **eportal.properties**

### 3.3.1 Editing the ePortal Properties File

- 1 Change to the directory where you installed the ePortal files.
- 2 Using a text editor (such as **vi**), edit the **eportal.properties** file.
- 3 Locate the following line:  

```
integration_server_name=IntegrationSvr1
```
- 4 If you named the ePortal Integration Server anything *other* than the default name, change **IntegrationSvr1** to the correct name of your Integration Server.
- 5 Locate the following line:  

```
internal_db_data_directory=/tmp/eportal
```
- 6 Change **/tmp/eportal** to a directory name that reflects the content of that directory (internal database files), for example:  
**/ePortal/dbdata**
- 7 Locate the following line:

```
indexing_data_directory=/tmp/index_data
```

- 8 Change `/tmp/index_data` to a directory name that reflects the content of that directory (index and search engine files), for example:

```
/ePortal/index
```

- 9 Save the `eportal.properties` file.
- 10 Copy the `eportal.properties` file to:  
`/${LOGICAL_HOST_INSTALL_DIRECTORY}`  
which is the directory where the logical host is installed.

### 3.3.2 Starting the Logical Host

#### To start the Logical Host

- 1 Change to the `bootstrap/bin` directory in the location where you installed the Logical Host, for example:

```
cd /home/my_user_name/ican50/logicalhost/bootstrap/bin
```

- 2 Run the bootstrap script using the following command:

```
./bootstrap.sh arguments
```

See [Logical Host Startup Parameters](#) on page 23 for a complete list of the command-line arguments. *Remember that the Logical Host service will continue to run until you manually shut it down.*

- 3 Copy the `eportal.properties` file to the Logical Host and drop it into the following directory:

```
<logicalhost>/stcis/lib/endorsed
```

where:

`logicalhost` is the directory for the Logical Host.

- 4 Copy `ePortal.war` and `search.war` into your Logical Host deployment directory, for example:

```
<logicalhost>/stcis/deploy/new/<servername>
```

where:

`logicalhost` is directory for the Logical Host, and

`servername` is the name of the Integration Server running on the Logical Host.

**Note:** *There can be more than one Integration Server running on the Logical Host. Make sure you explore to the specific Integration Server that you specified for ePortal Composer.*

- 5 Watch the files in the directory. After a few moments, the files should disappear.

If you completed all of the preceding steps correctly, the two files will disappear, one after the other. When the files are no longer visible in the `<servername>` directory, they have been deployed onto the Integration Server and ePortal Composer is ready to run.

### 3.3.3 Validating the Installation

This procedure verifies that the ePortal application and the Logical Host, and the ePortal database are all running, and confirms that ePortal Composer has been successfully installed.

- 1 Start your browser.
- 2 On the **Address** line, type the following URL:

**`http://<hostname>:<port>/ePortal/`**

where:

*hostname* is the name of the host machine, and

*port* is the port number assigned to the Logical Host.

For example:

**`http://unix_server1:18003/ePortal/`**

In a successful installation, you will see ePortal **login** screen.

- 3 On the **login** screen, log in as Administrator as follows:  
username: **Administrator**  
password: **STC**

### 3.3.4 Running ePortal After the Installation

To run ePortal Composer in subsequent sessions, do the following:

- 1 Start the Logical Host. See [“Starting the Logical Host” on page 30](#).
- 2 Log into ePortal. See [“Validating the Installation”](#).

# Portal Administration: Managing Channels

This chapter describes how to create and manage channels. A channel is SeeBeyond's equivalent of a portlet.

A channel is the mechanism through which Gate and eInsight data is aggregated and distributed. Many channels can be added to a single portal.

## 4.0.1 Before you Begin

Only ePortal server administrators are allowed to create, publish, and modify channels. The following procedures assume that you have ePortal server administrator privileges.

---

## 4.1 Publishing a New Channel

Using ePortal Composer to publish a new channel is described below.

### Log into ePortal Composer

- 1 Start your Browser.
- 2 On the address line, type the URL for ePortal, for example:  
**http://localhost:18003/ePortal**
- 3 On the **Login** page, type the administrator user name and password, for example:
  - Username = **Administrator**
  - Password = **STC**
- 4 Click **Login**.

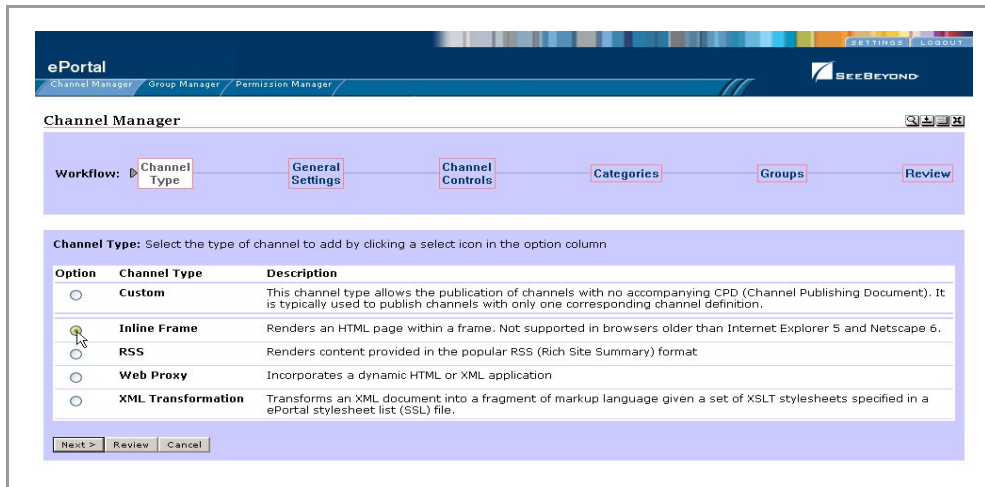
The **ePortal Composer Administration** page opens. The **Channel Manager** tab is the default.

### Publish a New Channel

- 1 Under the **Options for Managing Channels** heading, click **Publish a new channel**.
- 2 In the **Channel Type** area, select a channel layout option, for example: **Inline Frame**. See [Figure 15 on page 33](#).

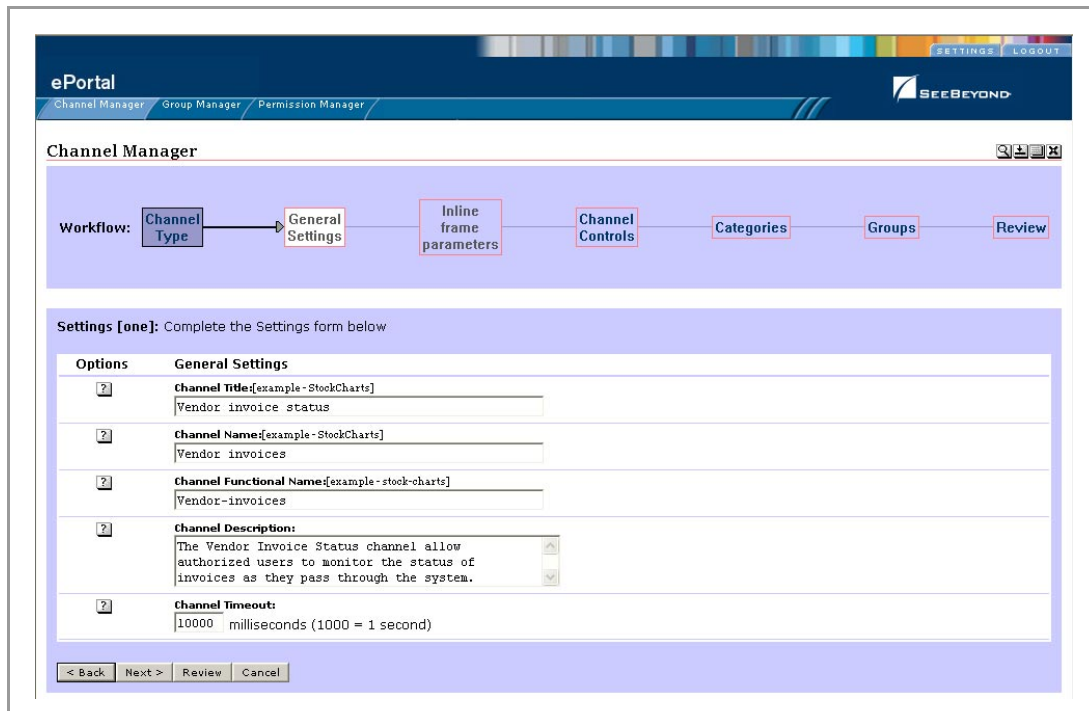


Figure 15 Publishing a channel



3 Click Next. See Figure 16.

Figure 16 Specifying an inline frame



- 4 In the **Settings** area, type the following information in the labeled fields.
- **Channel Title**— displayed when a user views the channel.
  - **Channel Name**—a logical name, which is displayed in the list of channels when you are personalizing (configuring) a channel's layout and view for a particular user.

- **Channel Description**— a short overview of the channel’s purpose.
- **Channel Timeout**—the time-frame, in milliseconds, within which, channel response must be received during a web application query. When the set time elapses without a response, the channel is closed.

See Figure 17.

**Figure 17** Specifying general channel settings

The screenshot shows the 'Channel Manager' interface in the ePortal. At the top, there are navigation tabs for 'Channel Manager', 'Group Manager', and 'Permission Manager'. A workflow bar shows the current step is 'General Settings', with other steps being 'Channel Type', 'Inline frame parameters', 'Channel Controls', 'Categories', 'Groups', and 'Review'. Below the workflow, a 'Settings [one]: Complete the Settings form below' section contains a table with the following fields:

Options	General Settings
[?]	<b>Channel Title</b> {example - StockCharts} Vendor invoice status
[?]	<b>Channel Name</b> {example - StockCharts} Vendor invoices
[?]	<b>Channel Functional Name</b> {example - stock-charts} Vendor-invoices
[?]	<b>Channel Description:</b> The Vendor Invoice Status channel allow authorized users to monitor the status of invoices as they pass through the system.
[?]	<b>Channel Timeout:</b> 10000 milliseconds (1000 = 1 second)

At the bottom of the form, there are navigation buttons: '< Back', 'Next >', 'Review', and 'Cancel'.

5 Type in the desired information, and then click **Next**.

6 In the **Inline frame parameters** area, under the **General Settings** heading, in the **URL** field, type the URL for the page you want to display in the in-line frame.

This is a key step. This is the Web application that you want the channel to present to users as a Web page. This step creates a link to that application.

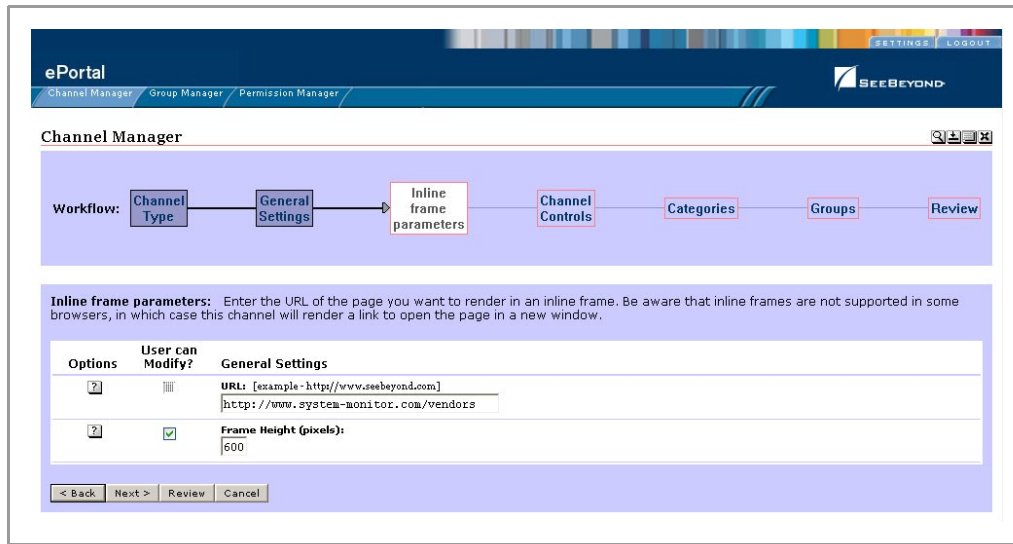
**Note:** *In-line frames are not supported by some browsers. Lack of in-line frame support will cause the browser to open the page in a new window.*

7 In the **Frame Height** field, in pixels, type in a height value.

This is the height constraint within which the channel will present the application’s Web interface to channel users.

See [Figure 18 on page 35](#).

**Figure 18** Setting inline frame parameters



8 Click **Next**.

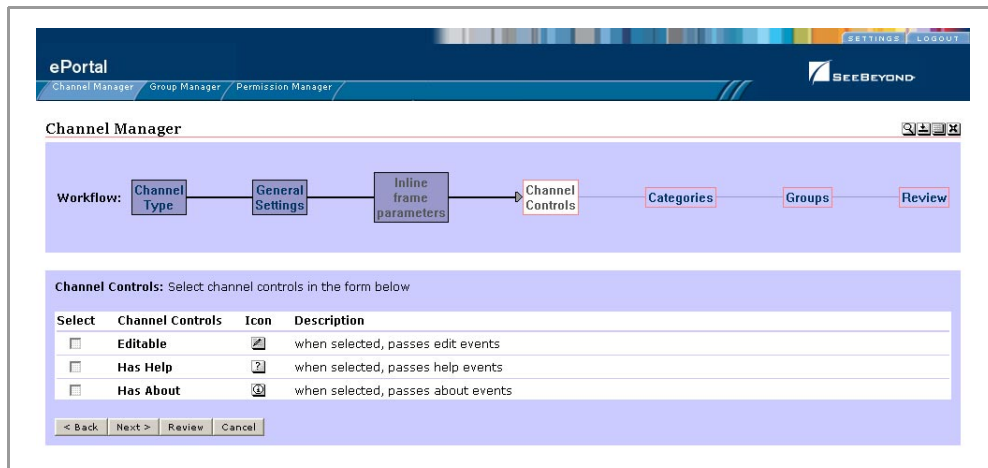
9 In the **Channel Controls** area, under the **Select** heading, select or clear the controls you want to add to the channel.

This maps Help and associated information to the control buttons (shown under the **Icon** heading) in the channel, and adds the buttons to the channel. For example:

- ◆ **Editable**—passes **edit** events to the application.
- ◆ **Has Help**—passes **help** events to the application.
- ◆ **Has About**—passes **about** events to the application.

See Figure 19.

**Figure 19** Setting channel controls



10 When you are finished, click **Next**.

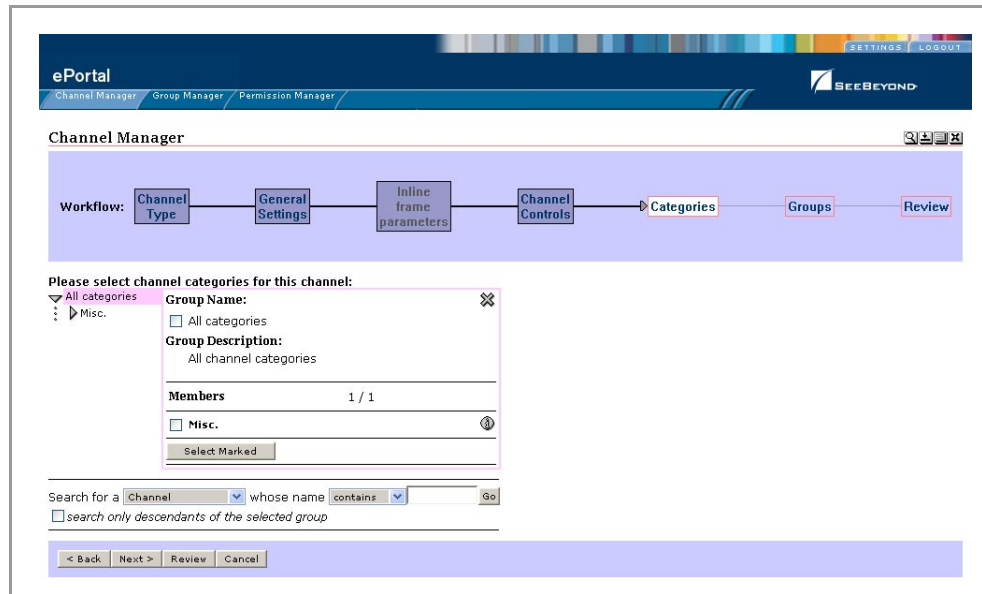
- 11 In the **Categories** area, to assign the channel to a category, select the drop-down arrow and select an appropriate category from the list.

This is a mechanism to group channels together in related categories.

- 12 To add the channel to the category, click **Add**.

The category is displayed to the right of the **X** under the **Selected Category** heading. To remove the channel from the category, under the **Option** heading, click **X**. See Figure 20.

**Figure 20** Assigning a category



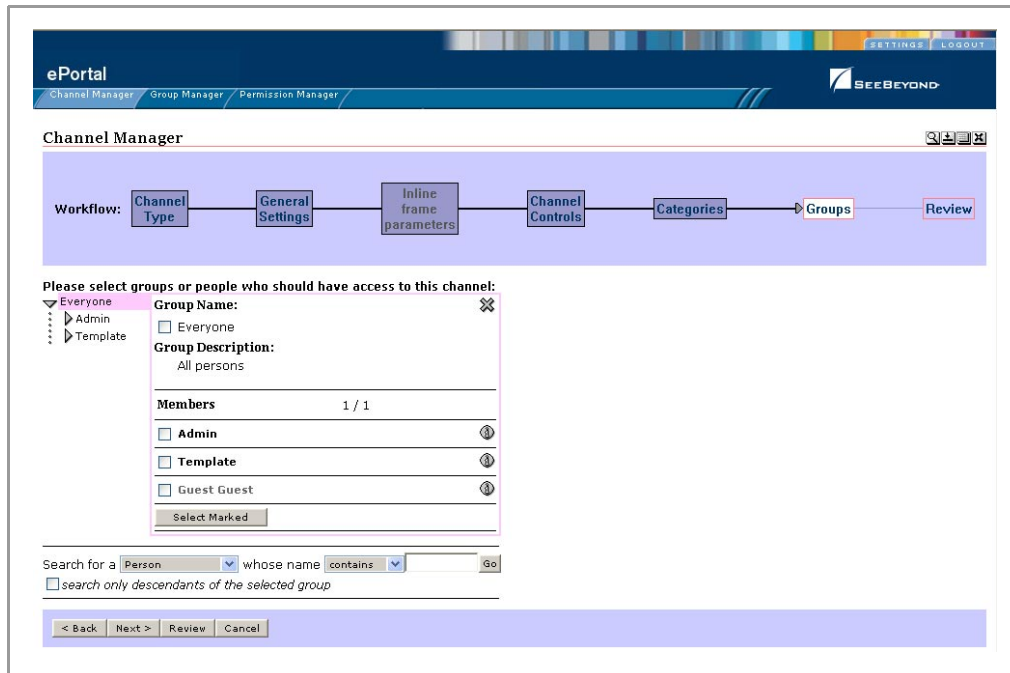
- 13 When you are finished, click **Next**.
- 14 In the **Groups** area, to specify the groups or people that you want to have access to the channel, select the drop-down arrow and select the groups from the list, and then click **Add**.

**Note:** This step is essential. ePortal Composer limits channel access to only the selected groups.

The group is displayed to the right of the **X** under the **Selected Group** heading. To remove the channel from the group, under the **Option** heading, click **X**.

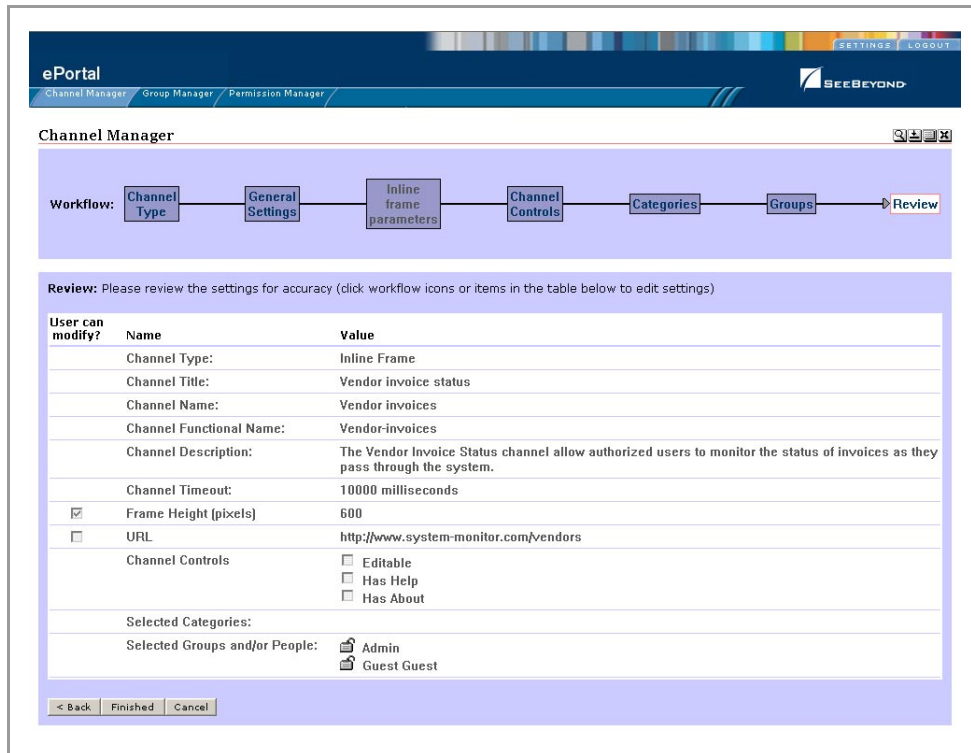
See [Figure 21 on page 37](#).

Figure 21 Assigning a group



- 15 When you are finished, click **Next**.
- 16 In the **Review** area, audit the information you provided for the channel. See [Figure 22 on page 38](#).

Figure 22 Reviewing channel parameters



- 17 When you are satisfied with the information, to complete the channel creation procedure, click **Finished**.

*Note:* If you exit before you click **Finished**, all your changes will be discarded.

# Portal Administration: Personalization

This chapter describes how to personalize a portal. By personalizing a portal, users can create different views of business information.

Initially, a new user has no layouts or channel options configured for their personal view. (A layout refers to the placement of objects on a user's view of a particular channel.) When a new user logs into ePortal prior to personalization, only three options will be available: **Home**, **Preferences**, and **Logout**.

## 5.0.1 Before you Begin

By default, all users are allowed personalization privileges, however, ePortal server administrators may choose to restrict access to the personalization tools.

---

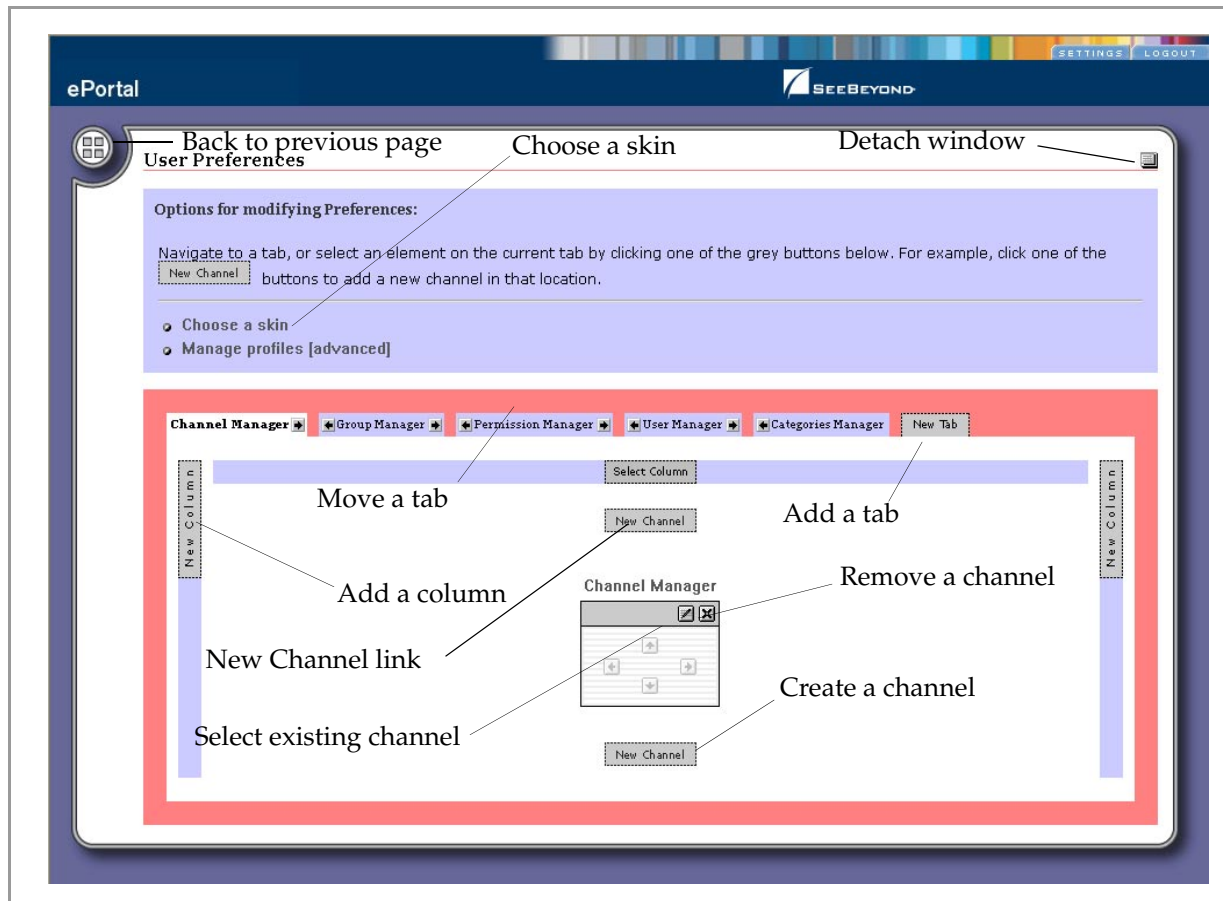
## 5.1 Personalizing a View

Using ePortal Composer to personalize a portal view is described below.

- 1 Start your browser.
- 2 On the address line, type the URL for ePortal, for example:  
**http://localhost:18003/ePortal**
- 3 On the **Login** page, type the administrator user name and password, for example:
  - Username = **Administrator**
  - Password = **STC**
- 4 Click **Login**.  
The **ePortal Composer Administration** page will be displayed in your browser. The **Channel Manager** tab is the default.
- 5 Click the **Settings** tab.
- 6 To configure a layout, or add channels to the current view, click the **Preferences** link.

The **User Preferences** page is displayed. See [Figure 23 on page 40](#).

**Figure 23** Defining user preferences



The **User Preferences** page allows you to:

- Move tabs in the view.
- Add tabs to the view.
- Add, move, and resize columns in the view.
- Add channels to the view.
- Remove channels from the view.

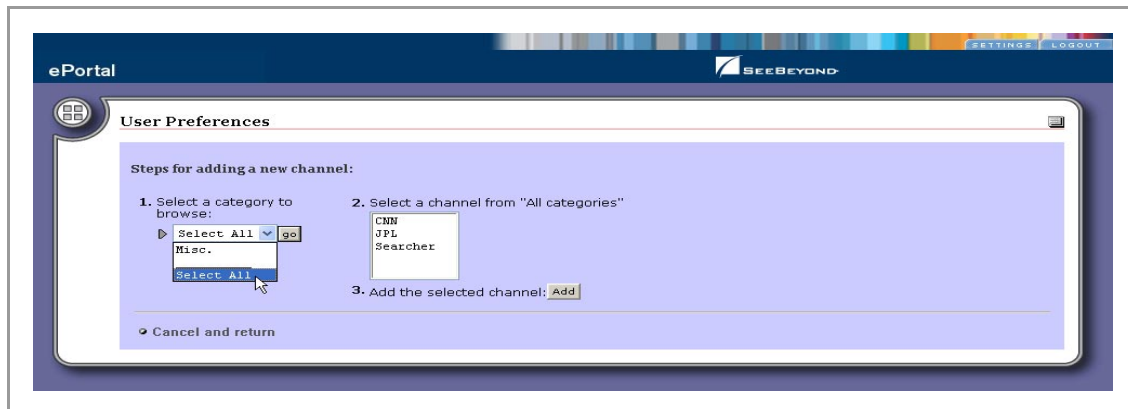
### 5.1.1 Adding a Channel to a View

Add a channel to the view by doing the following:

- 1 Select the **New Channel** link. See [Figure 24 on page 41](#).

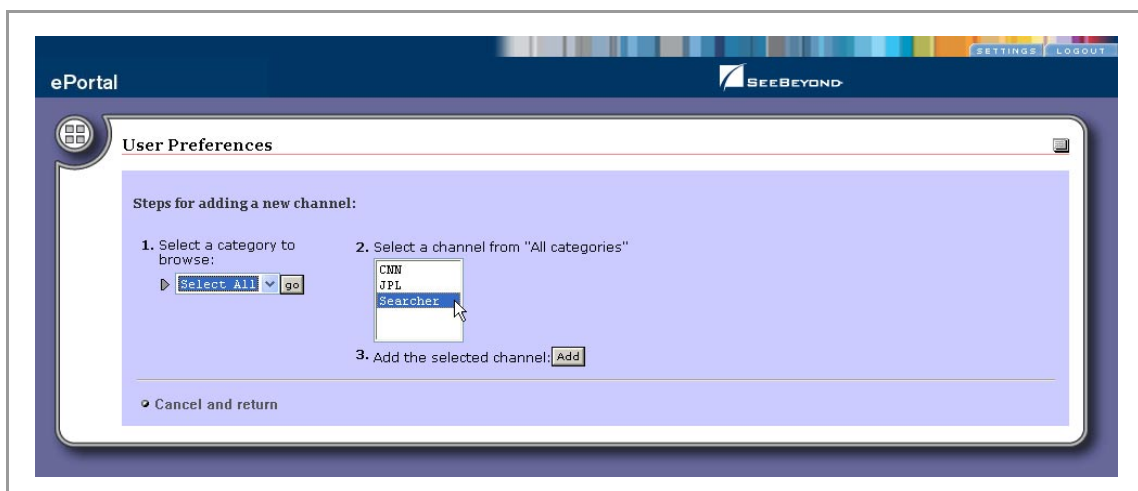


**Figure 24** New Channel link



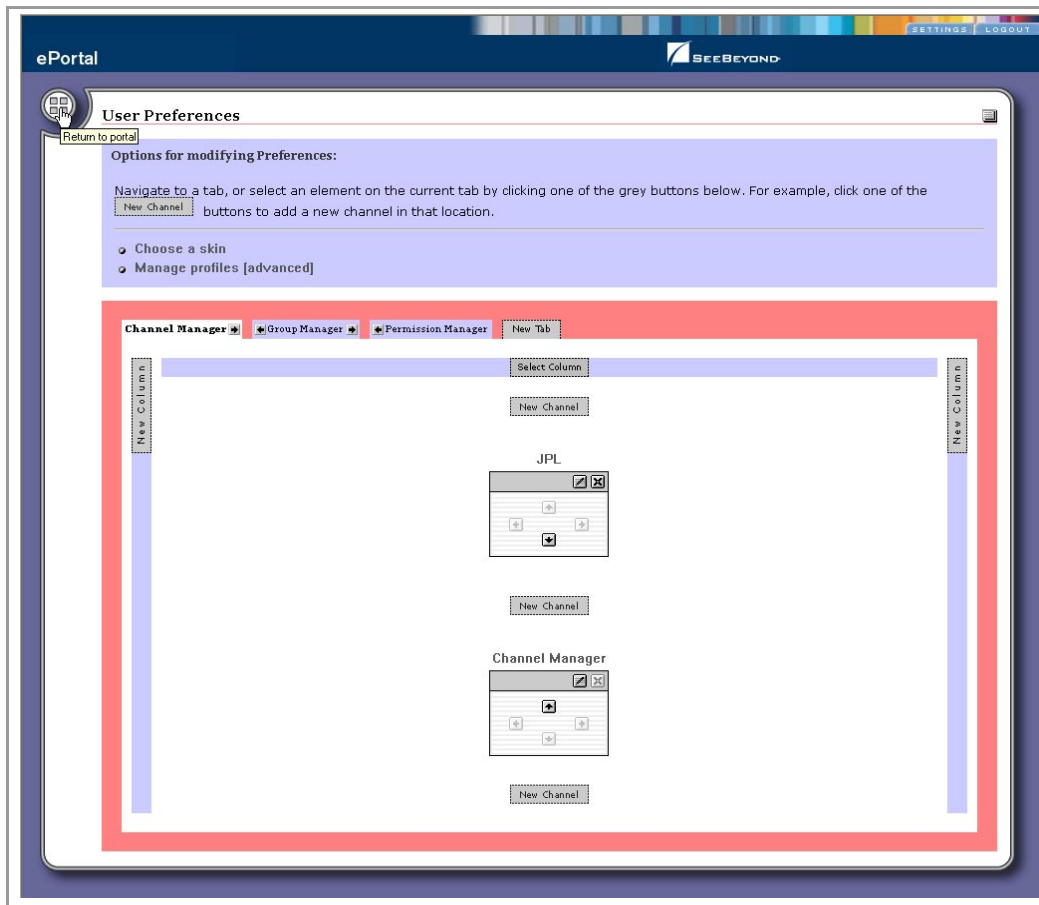
- 2 From the **Categories** drop-down list, select a category, and then click **Go**.  
A list of channel categories will be displayed. See Figure 25.

**Figure 25** Channel categories list



- 3 Select the channels you want to add, and then click **Add**.  
You can add as many channels as you wish. See [Figure 26 on page 42](#).
- 4 To remove a channel, click on the **X** icon on the top right corner of the channel image.
- 5 To select the current channel for modification, click the **pencil** icon on the left of the channel image.

Figure 26 Adding channels

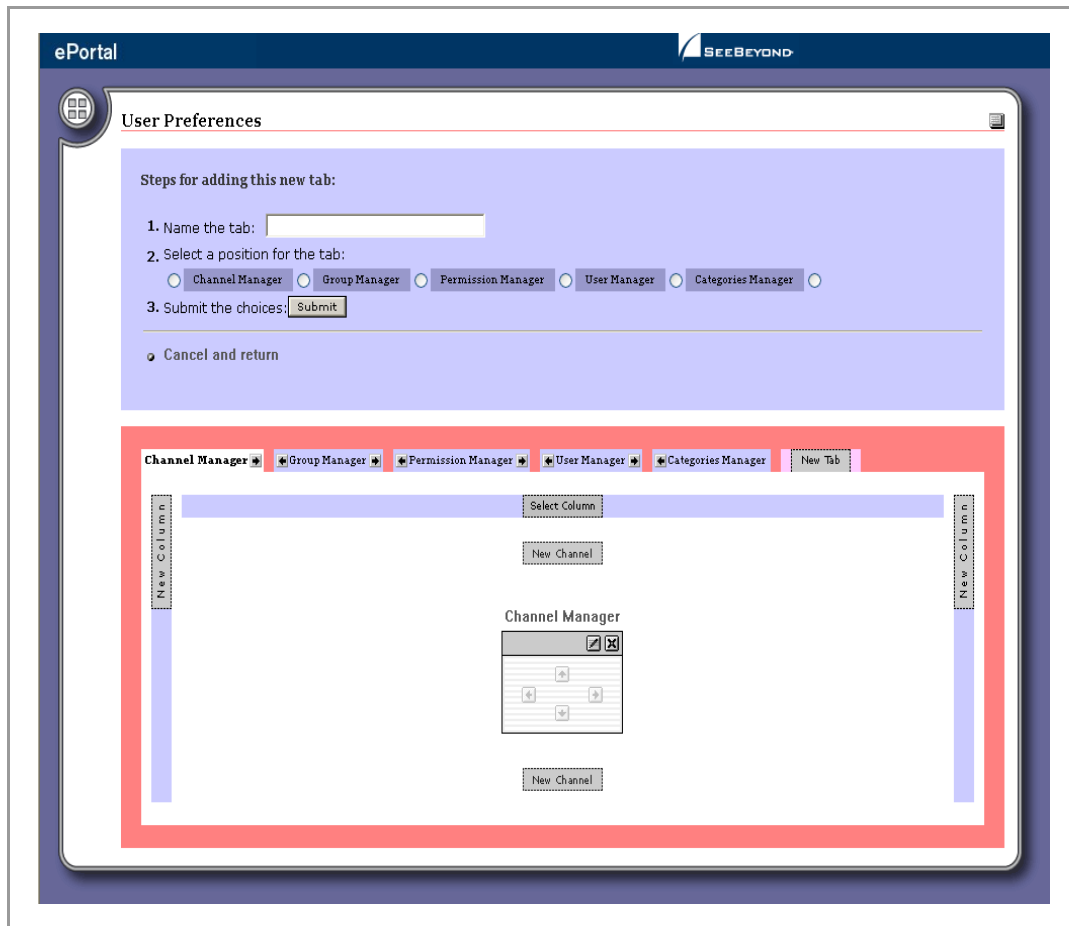


### 5.1.2 Adding a Tab to a Channel View

Tabs allow you to organize the channels to be presented in a user's view. You can add as many tabs as you wish.

- 1 To create a tab, on the **User Preferences** page, click **New Tab**. See [Figure 27 on page 43](#).

Figure 27 Creating a tab



- 2 Type a name for the tab.
- 3 Specify the location for the tab relative to the other tabs in the view.
- 4 Click **Submit**.
- 5 To cancel the operation at any time, select the **Cancel and return** link.
- 6 When you return to the **User Preferences** page, you can select the arrows on either side of the tab to move it one to the right or left relative to the other tabs.

### 5.1.3 Modifying a Tab

- 1 To modify a tab, on the **User Preferences** page, select a tab from the row of tabs.
- 2 Do any of the following:
  - Make the tab the default tab.
  - Rename the tab.
  - Move the tab relative to the other tabs in the view.
  - Lock (or unlock) the tab.

- Delete the tab.
- 3 Click **Submit**.
- 4 To cancel the operation at any time, select the **Cancel and return** link.

### 5.1.4 Adding a Column to a Channel View

You can add columns to channels to be presented in a user's view. You can add as many columns as you wish.

- 1 To create a column, on the **User Preferences** page, click **New Column**.
- 2 Specify a width value for the new column.  
The total column widths should equal 100% of the page.
- 3 Click **Submit**.
- 4 To cancel the operation at any time, select the **Cancel and return** link.

### 5.1.5 Modifying a Column

You can move and resize existing columns.

- 1 In the column you want to modify, select the **Select Column** link.
- 2 Do any of the following:
  - Specify a width value for the new column.  
The total column widths should equal 100% of the page.
  - Move the column.
  - Delete the column.
- 3 Click **Submit**.
- 4 To cancel the operation at any time, select the **Cancel and return** link.

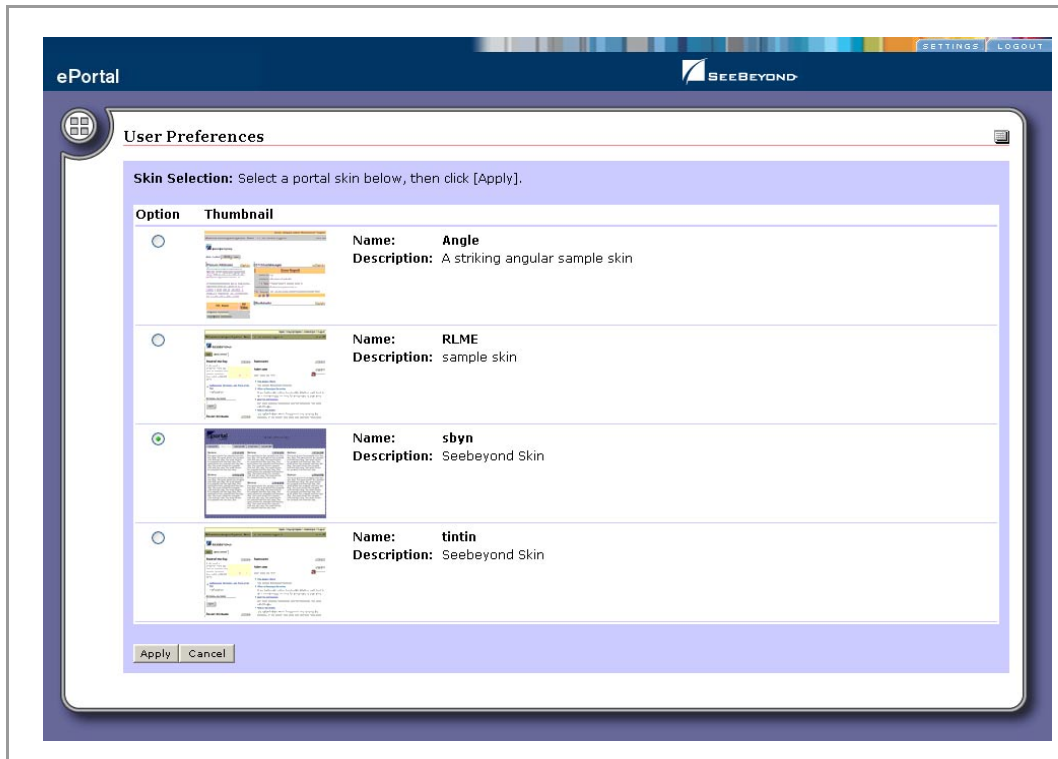
### 5.1.6 Changing the Skin of a Channel View

ePortal provides an initial set of template Web page skins. You can employ these skins to personalize a channel to appeal to a particular user's profile.

#### To Change the Skin of a Channel User's Default View

- 1 On the **User Preferences** page, select the **Choose a skin** link. See [Figure 28 on page 45](#).

Figure 28 Choosing a skin



- 2 To apply the skin, in the **Skin Selection** area, select a skin, and then click **Apply**. You are now ready to explore ePortal using your own end-user account.

# Portal Administration: Managing Groups

This chapter describes how to manage groups in ePortal Composer.

## 6.0.1 Before you Begin

Only ePortal administrators are allowed to create and modify groups. The following procedures assume that you have ePortal server administrator privileges.

---

## 6.1 Creating and Modifying Groups

The Groups Manager channel allows the administrator to manipulate groups, group memberships, and their permissions.

In a channel, groups are structured in a hierarchy that the administrator creates and can modify. The top-level (master) group is called **Everyone**. All individuals with any level of access to the channel are members of the **Everyone** master group. The **Group Manager** page provides a view of existing groups and the mechanism for the administrator to set the attributes and permissions for a group.

### 6.1.1 About Groups

A group can be a member of zero or more groups. Group members have privileges assigned to them directly or as inherited from the hierarchy of group memberships, which enables multiple inheritance instances.

The **root group** is a special group that is the parent of all groups of a particular type. The **Group Manager** channel requires the root groups to organize the initial view. Root groups are also used by the search function to determine the types that can be searched.

In a typical implementation, the All categories group is the root group of all channel definition groups, and Everyone group is the root group of all Person groups. Root group properties are used to determine which groups are root groups.

Group members can be displayed in the detail view by clicking the group name to open a panel containing group information. Group members are displayed in detail view from this panel also by clicking the group name. In addition, properties for a group member can be displayed by clicking on the **info** icon. You can edit the group in detail view by clicking the **lock** icon.

## Adding a Group

The **Group Manager** channel initially displays all root groups. User permissions determine the group members that the user sees as well as the functions that are made available for each group member. Using ePortal Composer to create and modify groups is described below.


### Log Into ePortal Composer

- 1 Start your Browser.
- 2 Go to **http://localhost:18003/ePortal**. On the address line, type the URL for ePortal, for example:


http://localhost:18003/ePortal

- 3 On the **Login** page, type the administrator user name and password, for example:
  - Username = **administrator**
  - Password = **STC**

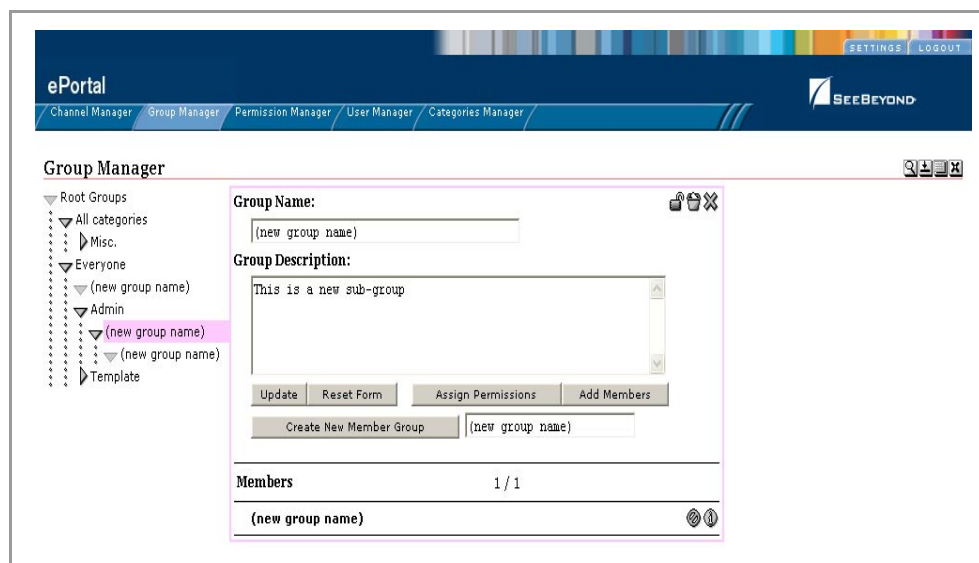
Adding a sub-group (a group within a group) to an existing group is described below.

- 1 On the **ePortal Composer Home** page, select the **Group Manager** tab.
- 2 In the **Group Manager** area, under the **Groups** heading, click the expansion arrow  to the left of the **Everyone** label to expand the list of groups.

All groups are subordinate to the **Everyone** master group.

- 3 To expand a group listing, click the expansion arrow  to the left of the group name, for example: **Template**.
- 4 To create a new sub-group within the selected group, select the **Create New** field, type a new sub-group name, and click **Create New**. See Figure 29.

**Figure 29** Creating a new sub-group



Under the **Members** heading, the new group name is added to the group list.

## Modifying an Existing Group

### Editing Groups

The Edit View allows you to update group information. For example:

- You can delete a group by clicking the **Trash Can** icon. This will physically delete the group and remove references to it from all other groups.
- You can change the group name and description by clicking the **Update** button.
- You can define a group as a sub-group by typing the name of the new group in the input box where **(new group name)** is displayed, and then clicking the **Create New Member Group** button.
- You can add existing group members to the group by clicking the **Add Members** button.
- You can assign permissions to the group by clicking the **Assign Permissions** button to launch the **Permissions Manager** channel. When you are finished, you can click the unlock icon (**Finish Editing Group**) to release the group.

### Adding Members to a Group

To add members to a group, click the **Add Members** button. Then in detail view, group members can be selected by clicking the checkbox by the group and then clicking the **Select Marked** button. The view is then shown with a permanent X along side the selected members. When are finished selecting members, click the **Done with Selection** button, and the selected member will be added to the selected parent group.

### Steps

The following procedures describe how to edit a group's properties, such as the group's name, description, members, and permissions.



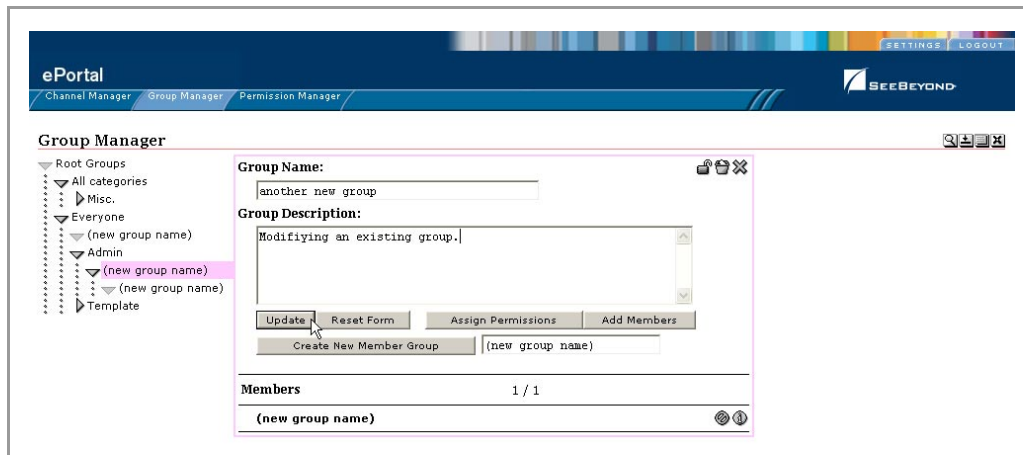
- 1 On the **ePortal Composer Home** page, select the **Group Manager** tab. See [Figure 30 on page 49](#).
- 2 To expand the list to view the existing groups, click the expansion arrow  to the left of the **Everyone** label:.
- 3 To view the group you want to modify, click the expansion arrow  to the left of the group name.
- 4 Select the sub-group you want to modify.



Figure 30 Modifying a group



- 5 Do any of the following:
  - Under **Name**, type a new name for the group.
  - Under **Description**, modify the group’s description.
  - To add a member to the group, click **Add Members**.
  - To assign permissions to the group, click **Assign Permissions**.
  - To create a new group, click **Create New**.
- 6 Select the check box aligned with the group name to which you want to add a member.
- 7 Click **Done**.


## Assigning Permissions

To assign permissions, click the **Assign Permissions** button. (You will be granting permissions to the group that you are currently editing.) To select group members to grant permissions, click the checkbox to the left of the group member’s name, and then click **Select Marked**. When you are finished selecting group members, click **Done with Selection**.

The **Permissions Manager** channel displays a grid with the principals organized in previous in rows with their permissions in columns. You can select **Grant** or **Deny** from the associated drop-down lists. To save the permissions, click the **Submit** button.

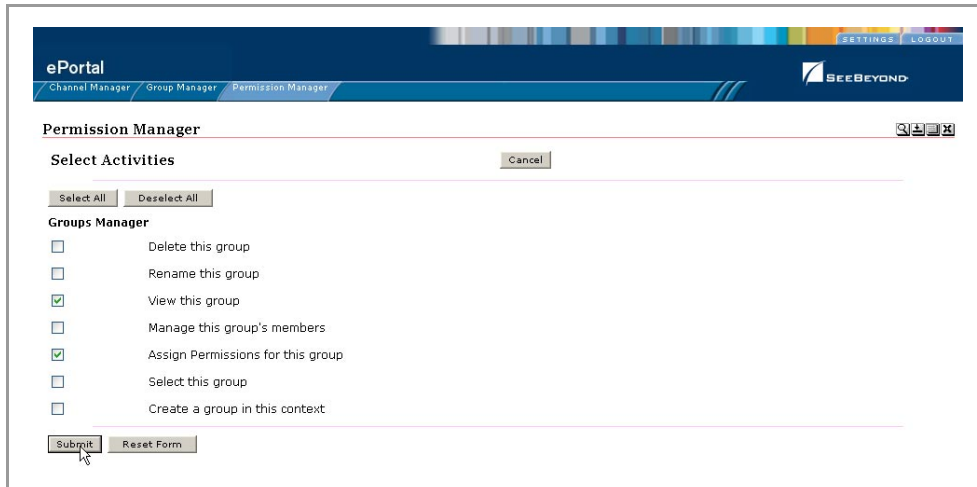
### To Assign Permissions to an Existing Group

This procedure describes how to assign channel access permissions to principals (individuals) within an existing group.

- 1 On the **ePortal Composer Home** page, select the **Group Manager** tab. See [Figure 31 on page 50](#).
- 2 To expand the list to view the existing groups, click the expansion arrow  to the left of the **Everyone** label.

- 3 To view the group you want to modify, click the expansion arrow ▶ to the left of the group's name.
- 4 In the expanded list, select the group or sub-group you want to modify.
- 5 Click **Assign Permissions**.

**Figure 31** Assigning permissions to a group

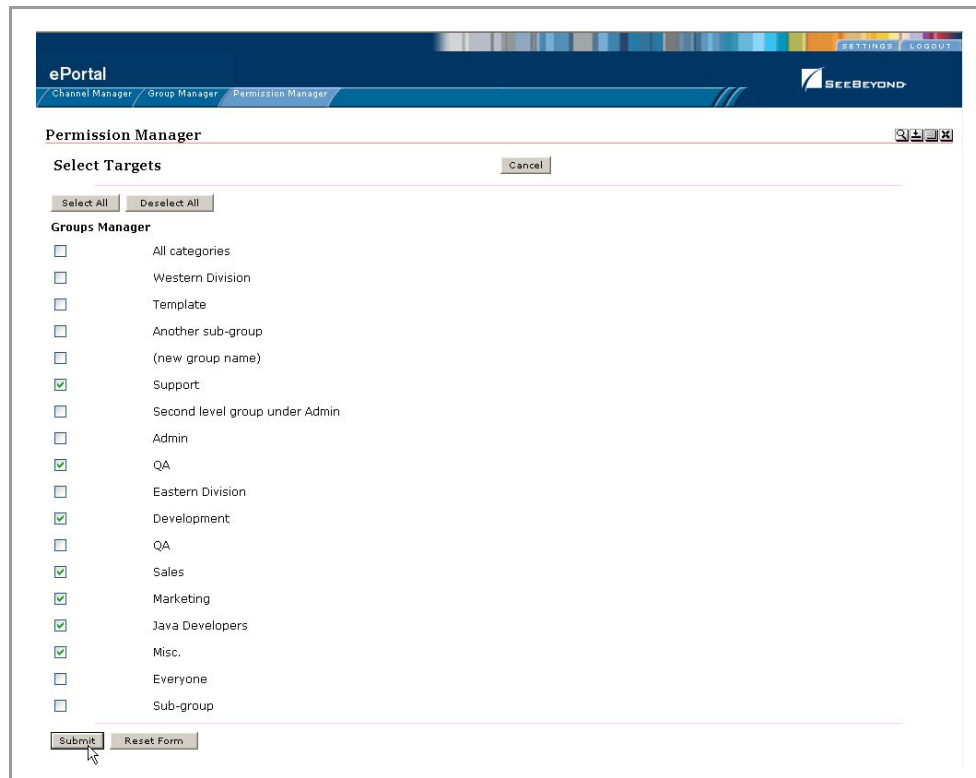


- 6 Select the names to which you want to assign permissions.
- 7 To add or remove names, click **Select** and **Deselect**.
- 8 When you are finished selecting names, click **Done**.
- 9 To assign group-level permissions (**Grant** or **Deny**), toggle the values in the labeled drop-down lists. See [Figure 32 on page 51](#).

Within the current group, you can grant or deny permission to do the following:

- ♦ Delete the group.
- ♦ Rename the group.
- ♦ View the group.
- ♦ Manage the group's members.
- ♦ Assign permissions to the group.
- ♦ Select a group within the current group.

**Figure 32** Assigning group-level permissions



10 When the group's permissions are set, click **Submit**.

### 6.1.2 Searching Groups

You can search for any entity type that is contained in a root group and for any group of such entities. To search for particular groups, you search based on **arguments**. For example:

- To search for a **Group of Persons** (the first argument), change the second argument to **contains** or **starts with** and the third argument to **administrators**.
- To search within the current group only, select the **Search only descendants of the selected group** checkbox.

When you click **Go**, a new **Search results** element will be created that contains an element for each member in the results.

# Enabling the Search Module

ePortal Composer provides a search engine that allows you to search for and upload files and documents to the repository from external locations and then retrieve them based on search criteria. To enable this facility, you have to create a channel for it.

## 7.0.1 About the ePortal Search Engine

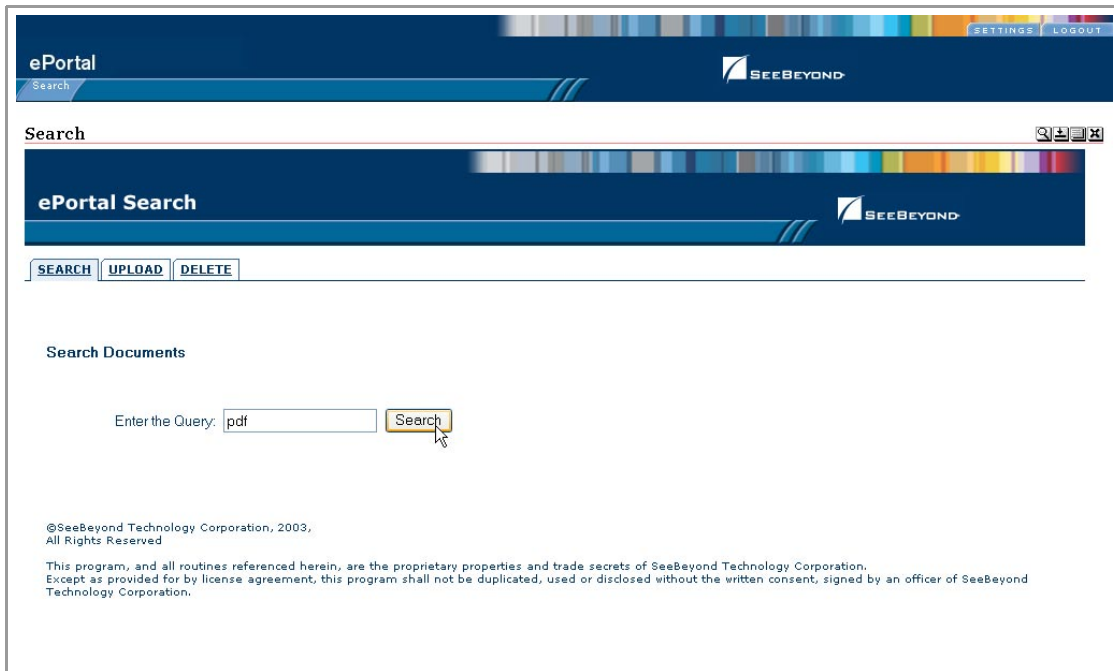
The **ePortal Search Engine** enables you to browse anywhere on your local machine or network, and then upload selected files to the Repository. See Figure 33.

**Figure 33** ePortal Composer Search Facility: Upload

The screenshot shows the ePortal Search Facility: Upload interface. The page has a dark blue header with the ePortal logo and SEE BEYOND logo, along with links for SETTINGS and LOGOUT. Below the header is a search bar with a search icon and a Search button. The main content area has a sub-header ePortal Search and SEE BEYOND logo. Below this are three buttons: SEARCH, UPLOAD, and DELETE. The Upload and Index Documents section contains four file input fields with Browse... buttons. The first two fields contain the path C:\Projects\BAM\_50\pr and C:\Projects\BAM\_50\H. Below these are two empty fields with Browse... buttons. At the bottom of this section is a Submit button. The footer of the page reads @SeeBeyond Technology Corporation, Inc 2003.

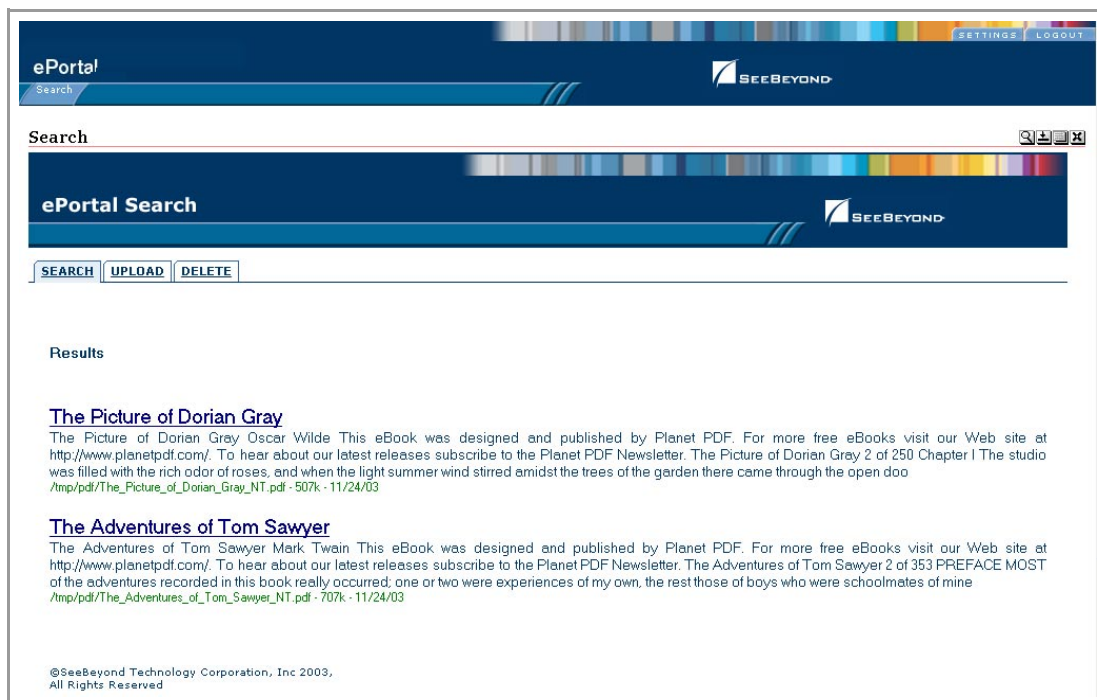
When you have compiled several files in the Repository, you can launch a query and the Search engine will scan the Repository for files that fit the search criteria. For example, you could query for all documents and files with **pdf** in the file name. See [Figure 34 on page 53](#).

**Figure 34** ePortal Composer Search Facility: Query



All files in the Repository that fit the search criteria will be displayed on the **Results** page. See Figure 35.

**Figure 35** ePortal Composer Search Facility: Query Results



## 7.0.2 Creating a Channel for the Search Facility

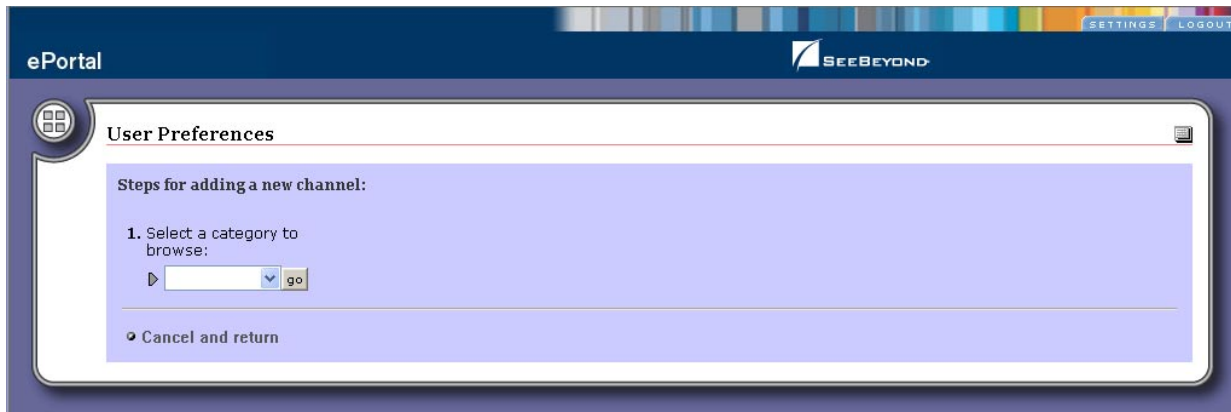
This section describes how to create a channel for the ePortal Search Facility, using the **guest** ID and password.

### Log into ePortal Composer

- 1 Start your Browser.
- 2 On the address line, type the URL for ePortal, for example:  
**http://localhost:18003/ePortal**
- 3 On the **Login** page, type the **guest** user name and password, for example:
  - Username = **guestr**
  - Password = **guest**
- 4 Click **Login**.
- 5 To initial ePortal page, click the **SETTINGS** tab.

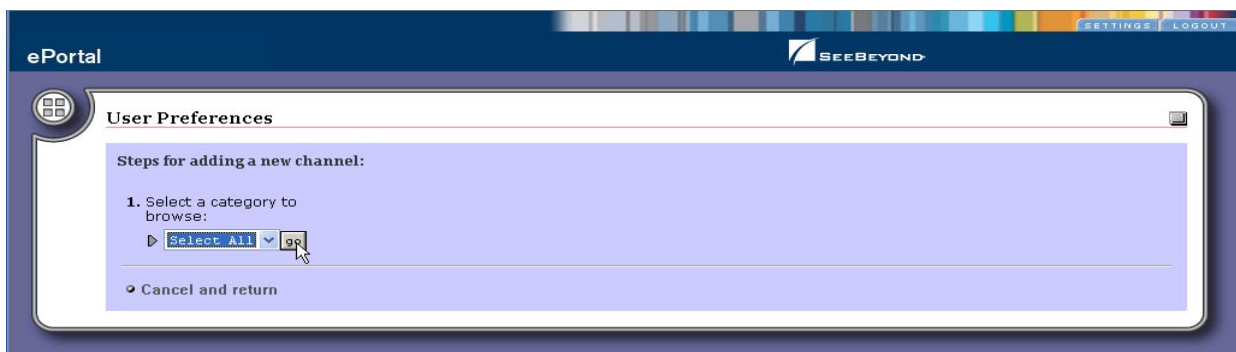
The **User Preferences** startup page for adding a new channel appears. See Figure 36.

**Figure 36** User Preferences: Adding a New Channel



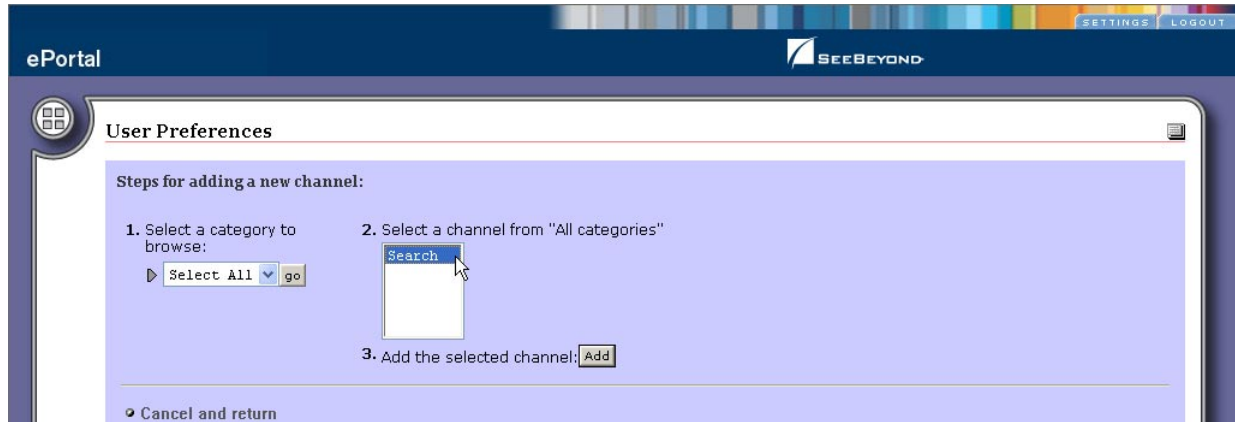
- 6 On the **User Preferences** page, select a category to browse, and then click **Go**. See Figure 37.

**Figure 37** User Preferences: Selecting a Category



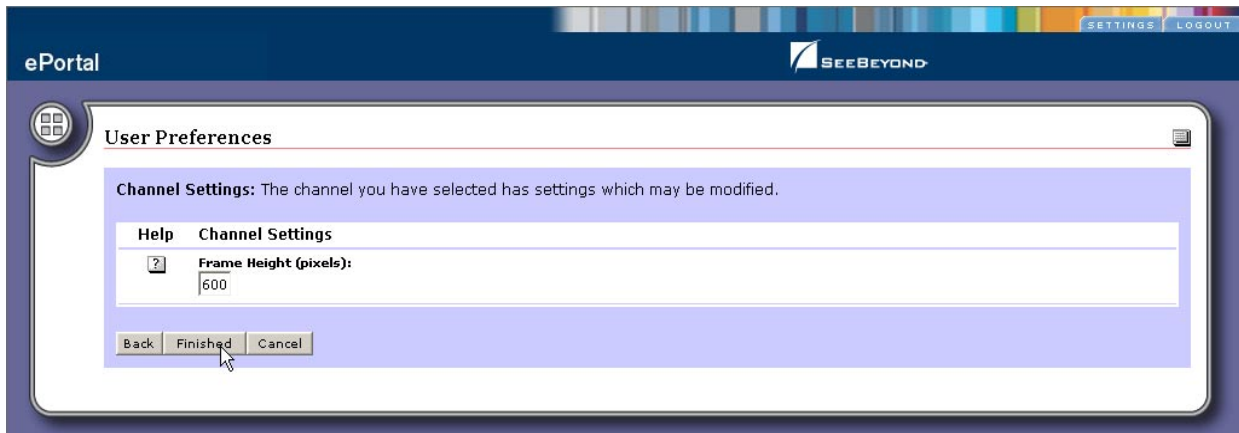
- 7 On the **User Preferences** page, select a channel from the category, and then click **Add**. See Figure 38.

**Figure 38** User Preferences: Selecting a Channel



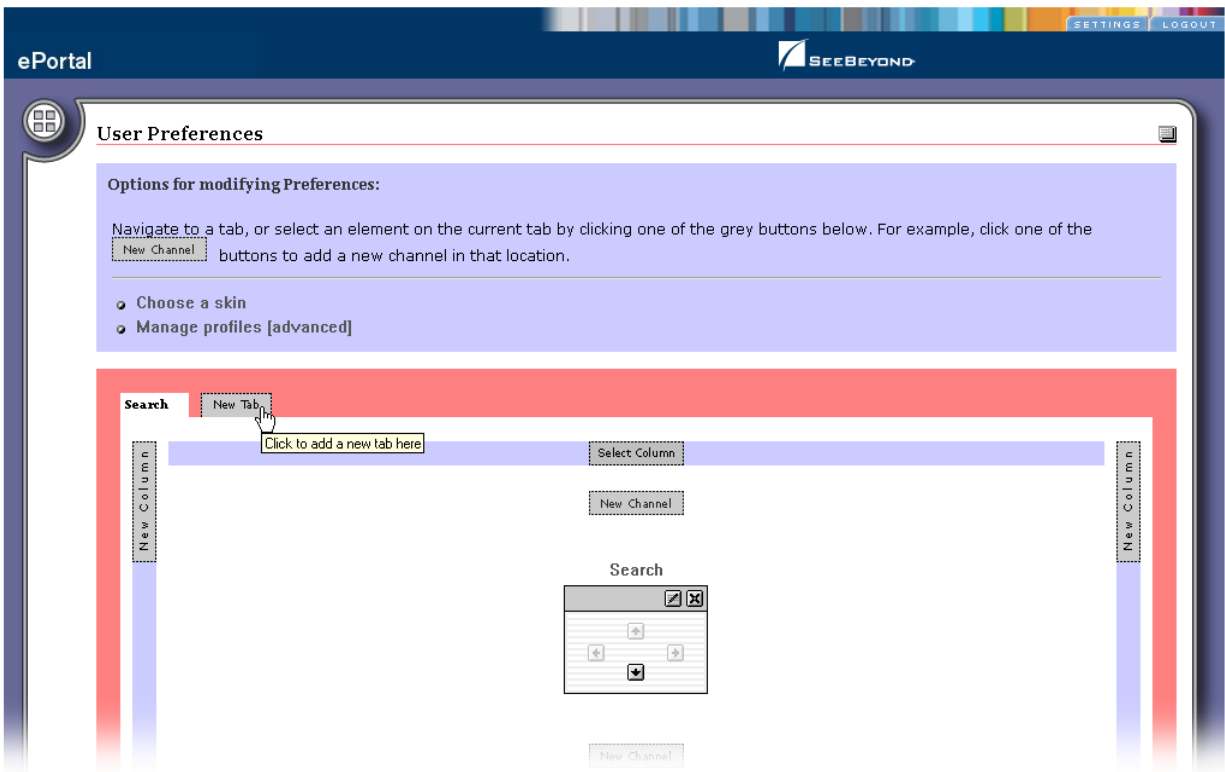
- 8 On the **User Preferences** page, set the frame height in pixels, and then click **Finished**. See Figure 39.

**Figure 39** User Preferences: Setting the Frame Height



On the **User Preferences Options** page, select **New Tab**. See [Figure 40 on page 56](#).

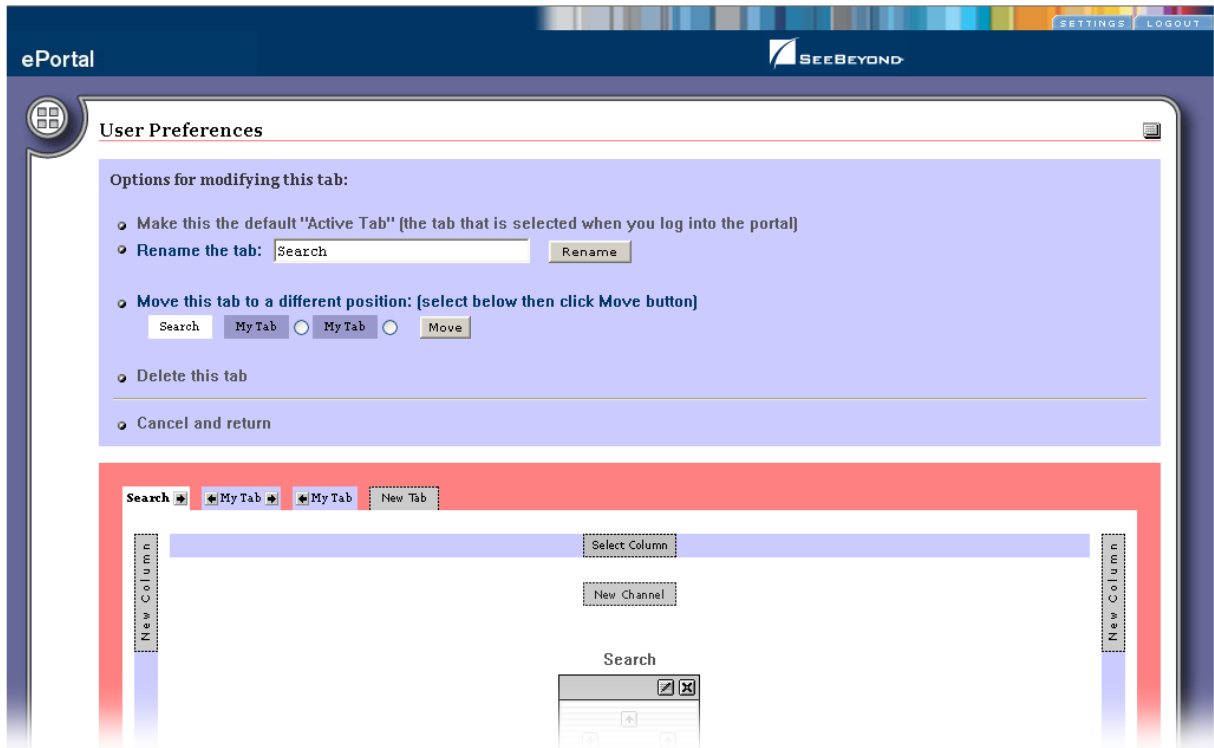
**Figure 40** User Preferences: Adding a New Tab



- 9 Using the radio buttons on the **Options** page, select a position for the new tab. See [Figure 43 on page 59](#).

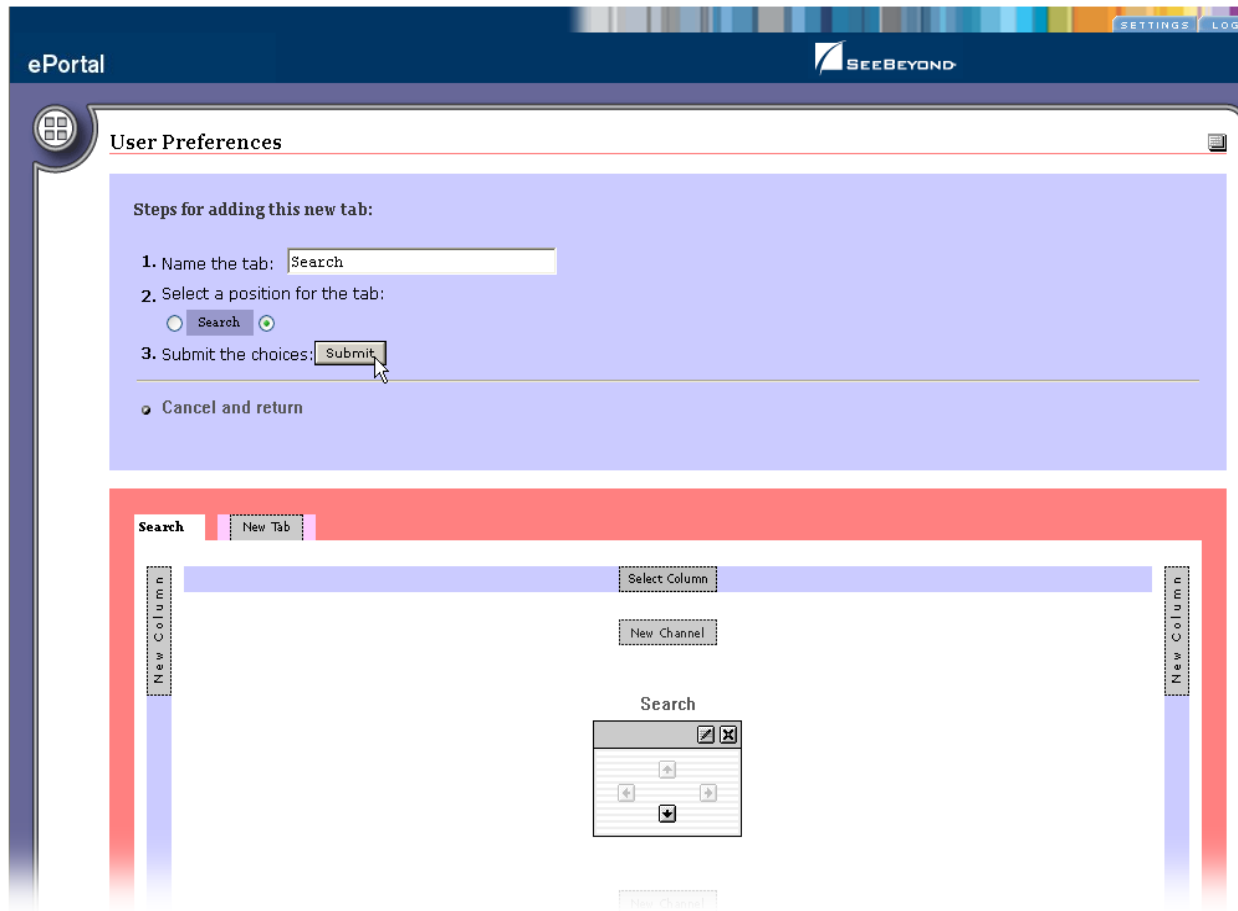


**Figure 41** User Preferences: Naming the Search Tab



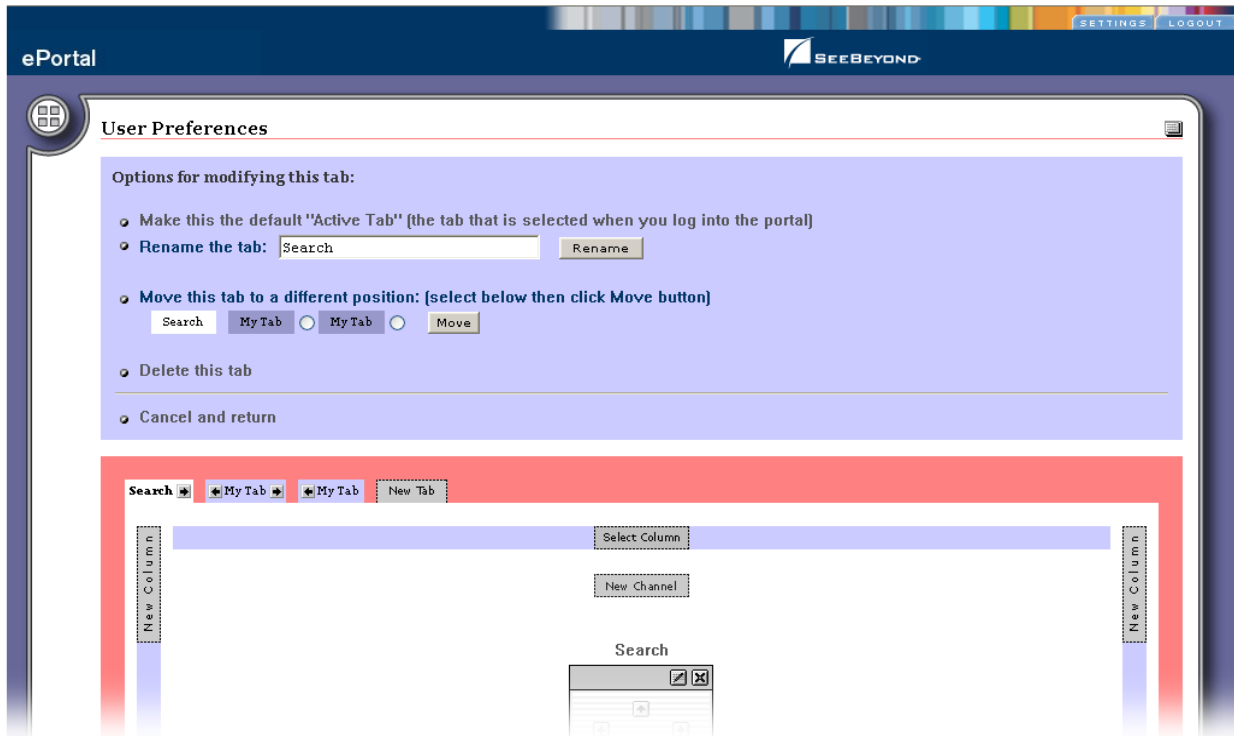
- 10 To submit the selections and generate the new tab, click **Submit**. See [Figure 42 on page 58](#).

**Figure 42** User Preferences: Submitting Choices



11 Specify the **Search** tab as the default at login. See [Figure 43 on page 59](#).

**Figure 43** User Preferences: Defining Search as the Default Tab

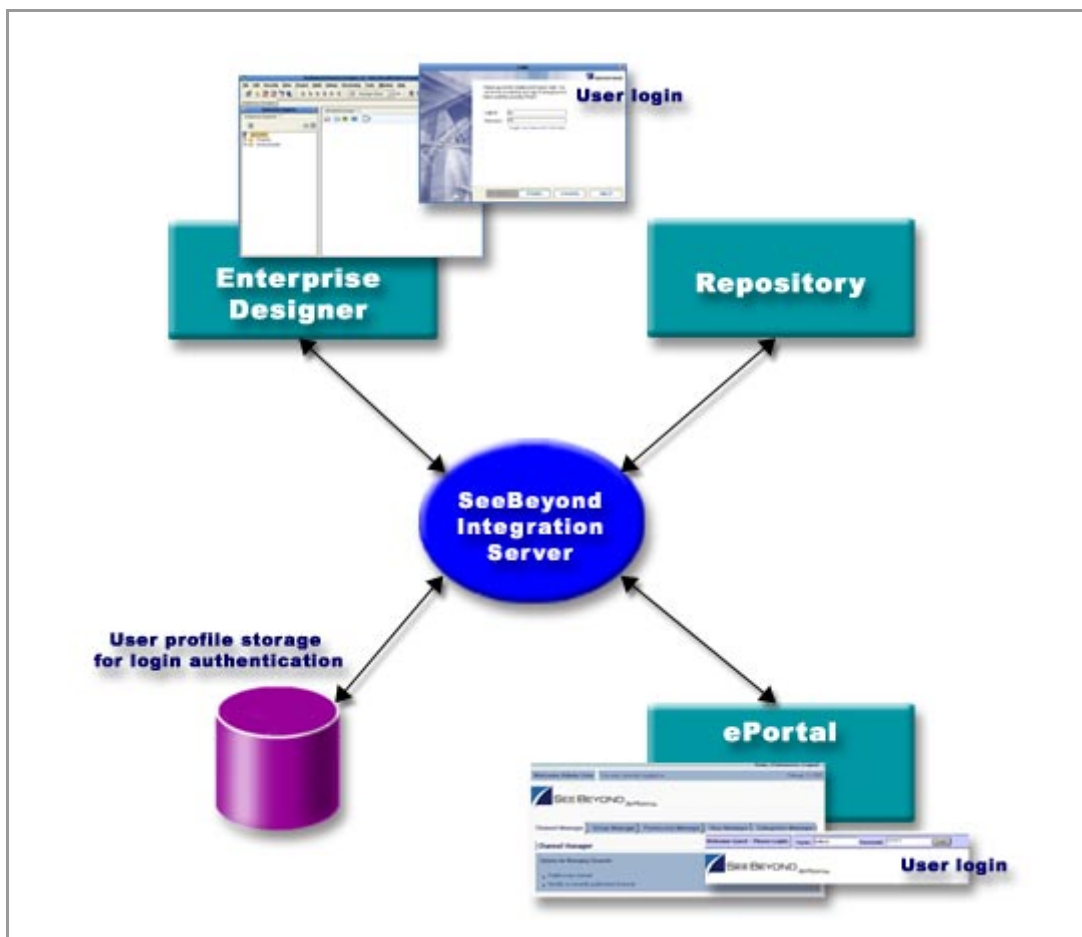


# User Login Authentication

ePortal Composer uses the embedded Web server's authentication mechanism to authenticate user IDs and passwords at login. User attributes such as login ID, password (credential), and properties such as first and last names, e-mail address, and other user profile information are then maintained in a persistent data storage area.

An example of the user login authentication process is illustrated in Figure 44.

**Figure 44** ePortal Composer Login Authentication



# Index

## A

- about events 35
- add a column to a channel view 44
- adding a new tab 56
- application architecture 9
- apply a skin 45
- assign channel access permissions 49
- assign channel to a category 36
- assign permission to a group 50
- assign permissions 50
- assign permissions to a group 49

## B

- bootstrap command 24
- browsing a category 54
- business processes 12

## C

- channel 9
- channel categories 41
- channel creation procedure 38
- channel description 34
- channel name 33
- channel options 39
- channel presentation 42
- channel time-out 34
- channel title 33
- channels 14
- choosing a skin 45
- command line arguments 23
- Command Prompt 24
- conventions
  - path name separator 10
  - Windows 10
- create a new group 49
- create a tab 43
- create and manage channels 32
- creating a channel for the search facility 54
- creating a Logical Host 19

## D

- delete a group 50
- document
  - conventions 10

## E

- edit a group's properties 48
- edit events 35
- Editable 35
- Enterprise Manager 17
- ePortal Composer Web console 10
- ePortal login screen 26
- ePortal Search Engine 52
- ePortal search facility 17
- eportal.properties file 17, 18, 29
- ePortal.sar 16, 18, 29, 30
- existing 44
- extraction 18

## G

- group hierarchy 46
- group listing 47
- guest ID 54

## H

- Has Help 35
- height constraint 34
- help events 35
- hostname 17

## I

- in 42
- inline frame 33
- inline frame parameters 34
- install ePortal Composer on the Window 17
- Installing ePortal Composer on UNIX 29

## L

- launching a query 52
- layouts 39
- license 16
- Logical Host
  - Starting Manually on Windows 23
- Login authentication 60
- login authentication process 60
- Login window 17

## M

manage a group 50  
master group 46  
milliseconds 34  
modify a column 44  
modify the current channel 41

## O

organize the channels 42

## P

permission 50  
persistent data storage 60  
personalize a portal 39  
portnumber 17  
ProductManifest.xml 18  
publish a new channel 32

## Q

query documents and files 52

## R

README.txt 18, 29  
remove a channel 41  
remove a channel from the category 36  
rename a group 50  
Repository 18

## S

scanning the Repository 52  
search facility query results 53  
search.war 18, 29, 30  
select a group 50  
setting the frame height in pixels 55  
SETTINGS tab 54  
start the Logical Host 30  
sub-group 47

## T

template Web page skins 44  
text editor 17

## U

Upload Component Manifest 18  
uploading files to the Repository 52

user attributes 60  
User Preferences 54  
User Preferences page 39  
user profile. 44

## V

Validate the Installation 26  
Validate the Installation of ePortal Compose 31  
view a group 50

## W

Web archive file 17  
Web channels 9  
WinZip 17  
writing conventions 10