

SeeBeyond ICAN Suite

DB2 Universal Database eWay Intelligent Adapter User's Guide

Release 5.0.2



The information contained in this document is subject to change and is updated periodically to reflect changes to the applicable software. Although every effort has been made to ensure the accuracy of this document, SeeBeyond Technology Corporation (SeeBeyond) assumes no responsibility for any errors that may appear herein. The software described in this document is furnished under a License Agreement and may be used or copied only in accordance with the terms of such License Agreement. Printing, copying, or reproducing this document in any fashion is prohibited except in accordance with the License Agreement. The contents of this document are designated as being confidential and proprietary; are considered to be trade secrets of SeeBeyond; and may be used only in accordance with the License Agreement, as protected and enforceable by law. SeeBeyond assumes no responsibility for the use or reliability of its software on platforms that are not supported by SeeBeyond.

SeeBeyond, e*Gate, and e*Way are the registered trademarks of SeeBeyond Technology Corporation in the United States and select foreign countries; the SeeBeyond logo, e*Insight, and e*Xchange are trademarks of SeeBeyond Technology Corporation. The absence of a trademark from this list does not constitute a waiver of SeeBeyond Technology Corporation's intellectual property rights concerning that trademark. This document may contain references to other company, brand, and product names. These company, brand, and product names are used herein for identification purposes only and may be the trademarks of their respective owners.

© 2003 by SeeBeyond Technology Corporation. All Rights Reserved. This work is protected as an unpublished work under the copyright laws.

This work is confidential and proprietary information of SeeBeyond and must be maintained in strict confidence.

Version 20031209162901.

Contents

Chapter 1

Introduction	6
Overview	6
Supported Operating Systems	6
System Requirements	7
External System Requirements	7

Chapter 2

Installation	8
Before Installing the eWay	8
Installing the DB2 eWay	8
After Installation	9

Chapter 3

Properties of the DB2 eWay	10
Properties of DB2 eWay on Windows or Unix Operating Systems	10
Setting the Properties of the Outbound DB2 eWay on Windows or Unix Operating Systems	10
ClassName	11
Description	11
InitialPoolSize	12
LoginTimeout	12
MaxIdleTime	12
MaxPoolSize	12
MaxStatements	12
MinPoolSize	13
NetworkProtocol	13
PropertyCycle	13
RoleName	13
Setting the Environment Properties of the Outbound DB2 eWay on Windows or Unix Operating Systems	13
DatabaseName	14
Delimiter	14
Description	14

Contents

DriverProperties	15
Password	15
PortNumber	15
ServerName	15
User	16
Properties of the DB2 eWay Connecting to z/OS or an AS/400 Operating System	16
Setting the Properties of the DB2 eWay Connecting to z/OS or an AS/400 Operating System	16
class	17
PortNumber	17
timeout	18
Setting the Environment Properties of the DB2 eWay Connecting to z/OS or an AS/400 Operating Systems	18
CollectionID	18
Delimiter	19
Description	19
DriverProperties	19
LocationName	19
Any valid string.	20
Password	20
PortNumber	20
ServerName	20
User	20

Chapter 4

Using the DB2 eWay Database Wizard	21
Using the Database OTD Wizard	21

Chapter 5

Building an eWay Project	32
eInsight Engine and eGate Components	32
Using the Sample Project in eInsight	32
The Business Process	34
SelectAll	35
SelectMultiple	37
SelectOne	38
Insert	39
Update	41
Delete	42
Using the Sample Project in eGate	44
Working with the Sample Project in eGate	44
Configuring the eWays	45
Creating an External Environment	46
Deploying a Project	46
Running the Sample	46
Common DataType Conversions	46

Using OTDs with Tables, Views, and Stored Procedures	48
The Table	48
The Query Operation	49
The Insert Operation	50
The Update Operation	50
The Delete Operation	51
The Stored Procedure	51
Executing Stored Procedures	52
Alerting and Logging	53

Introduction

This document describes how to install and configure the DB2 Universal Database eWay.

This Chapter Includes:

- [Overview](#) on page 6
- [Supported Operating Systems](#) on page 6
- [System Requirements](#) on page 7
- [External System Requirements](#) on page 7

1.1 Overview

The eWay enables eGate Integrator Projects to exchange data with external DB2 databases. This document describes how to install and configure the eWay.

1.2 Supported Operating Systems

The DB2 Universal eWay is available on the following operating systems:

- Windows Server 2003, Windows XP SP1a, and Windows 2000 SP3
- HP Tru64 V5.1A
- HP-UX 11.0 and 11i
- IBM AIX 5.1 and 5.2
- Sun Solaris 8 and 9

Although the DB2 Universal Database eWay, the Repository, and Logical Hosts run on the platforms listed above, the Enterprise Designer requires the Windows operating system. Enterprise Manager can run on any platform that supports Internet Explorer 6.0.

1.3 System Requirements

The system requirements for the DB2 eWay are the same as for eGate Integrator. For information, refer to the *ICAN Installation Guide*. It is also helpful to review the **Readme.txt** for any additional requirements prior to installation. The **Readme.txt** is located on the installation CD-ROM.

Note: *To enable Web Services, you must install and configure the SeeBeyond ICAN Suite eInsight Business Process Manager.*

1.4 External System Requirements

The DB2 eWay supports the following software on external systems:

- DB2 Universal Database (UDB) version 8.1.
- DB2 Universal Database (UDB) version 7.1 when connecting to DB2 running on an OS/390 operating system when using DataDirect drivers.
- DB2 Universal Database (UDB) version V5R1 when connecting to DB2 running on an AS/400 operating system.

Installation

This chapter describes how to install the DB2 Universal Database eWay.

This Chapter Includes:

- **Before Installing the eWay** on page 8
- **Installing the DB2 eWay** on page 8
- **After Installation** on page 9

2.1 Before Installing the eWay

Open and review the **Readme.txt** for the DB2 eWay for any additional information or requirements, prior to installation. The **Readme.txt** is located on the installation CD-ROM.

2.2 Installing the DB2 eWay

During the eGate Integrator installation process, the Enterprise Manager, a web-based application, is used to select and upload eWays (eWay.sar files) from the eGate installation CD-ROM to the Repository.

The installation process includes installing the following components:

- Installing the Repository
- Uploading products to the Repository
- Downloading components (such as Enterprise Designer and Logical Host)
- Viewing product information home pages

Follow the instructions for installing the eGate Integrator in the *ICAN Installation Guide*, and include the following steps:

- On the Enterprise Manager, select the **DB2eWay.sar** (to install the DB2 eWay) file to upload.
- On the Enterprise Manager, select the **FileeWay.sar** (to install the File eWay, used in the sample Project) file to upload.

- On the Enterprise Manager, install the **DB2eWayDocs.sar** (to install the documentation and the sample) file to upload.
- On the Enterprise Manager under the Documentation tab, click on the document link or the sample file link. For the sample project, it is recommended that you extract the file to another file location prior to importing it using the Enterprise Explorer's Import Project tool.
- For additional information on how to use eGate, please see the *eGate Tutorial*.

Continue installing the eGate Enterprise Designer as instructed.

2.3 After Installation

Once the eWay is installed and configured it must then be incorporated into a Project before it can perform its intended functions. See the *eGate Integrator User's Guide* for more information on incorporating the eWay into an eGate Project.

Properties of the DB2 eWay

This chapter describes how to set the properties of the DB2 eWay.

This Chapter Includes:

- [Setting the Properties of the Outbound DB2 eWay on Windows or Unix Operating Systems](#) on page 10
- [Setting the Environment Properties of the Outbound DB2 eWay on Windows or Unix Operating Systems](#) on page 13
- [Setting the Properties of the DB2 eWay Connecting to z/OS or an AS/400 Operating System](#) on page 16
- [Setting the Environment Properties of the DB2 eWay Connecting to z/OS or an AS/400 Operating Systems](#) on page 18

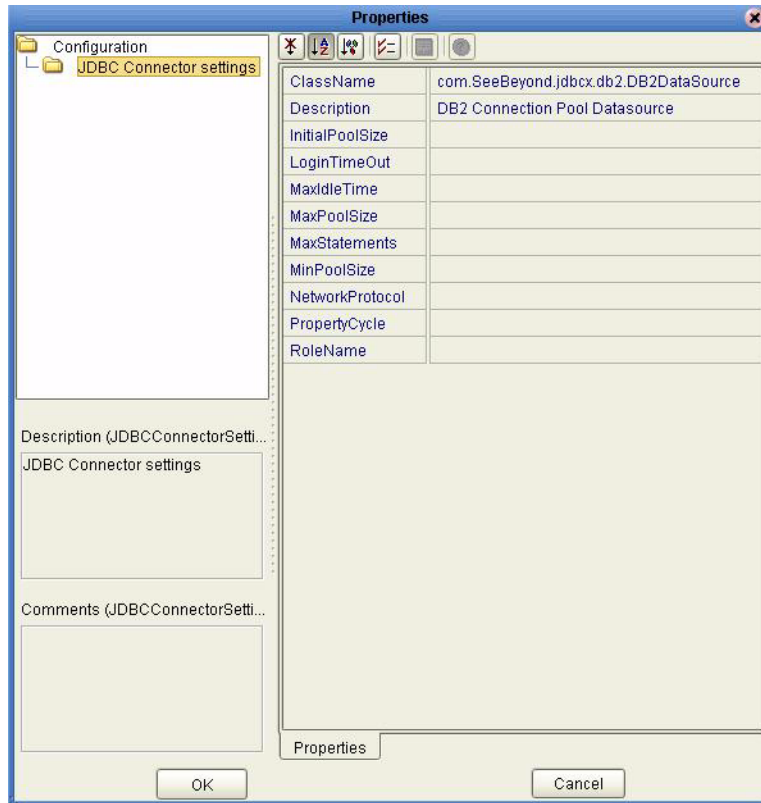
3.1 Properties of DB2 eWay on Windows or Unix Operating Systems

On the Properties sheet window and using the descriptions below, enter the information necessary for the eWay to establish a connection to the external application.

3.1.1. Setting the Properties of the Outbound DB2 eWay on Windows or Unix Operating Systems

The Property sheet settings define the properties used to interact with the external database.

Figure 1 The eWay Properties



ClassName

Description

Specifies the Java class in the JDBC driver that is used to implement the ConnectionPoolDataSource interface.

Required Values

A valid class name.

The default is **com.SeeBeyond.jdbcx.db2.DB2DataSource**.

Description

Description

Enter a description for the database.

Required Value

A valid string.

InitialPoolSize

Description

Enter a number for the physical connections the pool should contain when it is created.

Required Value

A valid numeric value.

LoginTimeOut

Description

The number of seconds driver will wait before attempting to log in to the database before timing out.

Required Value

A valid numeric value.

MaxIdleTime

Description

The maximum number of seconds that a physical connection may remain unused before it is closed. 0 (zero) indicates that there is no limit.

Required Value

A valid numeric value.

MaxPoolSize

Description

The maximum number of physical connections the pool should keep available at all times. 0 (zero) indicates that there is no maximum.

Required Value

A valid numeric value.

MaxStatements

Description

The maximum total number of statements that the pool should keep open. 0 (zero) indicates that the caching of statements is disabled.

Required Value

A valid numeric value.

MinPoolSize

The minimum number of physical connections the pool should keep available at all times. 0 (zero) indicates that there should be no physical connections in the pool and the new connections should be created as needed.

Required Value

A valid numeric value.

NetworkProtocol

Description

The network protocol used to communicate with the server.

Required Values

Any valid string.

PropertyCycle

Description

The interval, in seconds, that the pool should wait before enforcing the current policy defined by the values of the other connection pool properties in this deployment descriptor.

Required Values

A valid numeric value.

RoleName

Description

An initial SQL role name.

Required Values

Any valid string.

3.1.2 Setting the Environment Properties of the Outbound DB2 eWay on Windows or Unix Operating Systems

Before deploying your eWay, you will need to set the properties of the eWay environment using the following descriptions.

Figure 2 Environment Settings of the Outbound DB2 eWay on Windows and Unix



DatabaseName

Description

Specifies the name of the database instance.

Required Values

Any valid string.

Delimiter

Description

This is the delimiter character to be used in the DriverProperties prompt.

Required Value

The default is #

Description

Description

Enter a description for the database.

Required Value

A valid string.

DriverProperties

Description

If you choose to not to use the JDBC driver that is shipped with this eWay, you will need to add the drivers properties to the eWay. Often times the DataSource implementation will need to execute additional methods to assure a connection. The additional methods will need to be identified in the Driver Properties.

Required Value

Any valid delimiter.

Valid delimiters are: "`<method-name-1>#<param-1>#<param-2>##.....<param-n>##<method-name-2>#<param-1>#<param-2>#.....<param-n>##.....##`".

For example: to execute the method `setURL`, give the method a String for the URL "`setURL#<url>##`".

If you are using Spy Log. Optional:

`setURL#jdbc:Seebeyond:db2://<server>:50000;DatabaseName=<database>##setSpyAttributes#log=(file)c:/temp/spy.log;logTName=yes##`".

Password

Description

Specifies the password used to access the database.

Required Values

Any valid string.

PortNumber

Description

Specifies the I/O port number on which the server is listening for connection requests.

Required Values

A valid port number. The default is 50000.

ServerName

Description

Specifies the host name of the external database server.

Required Values

Any valid string.

User

Description

Specifies the user name the eWay uses to connect to the database.

Required Values

Any valid string.

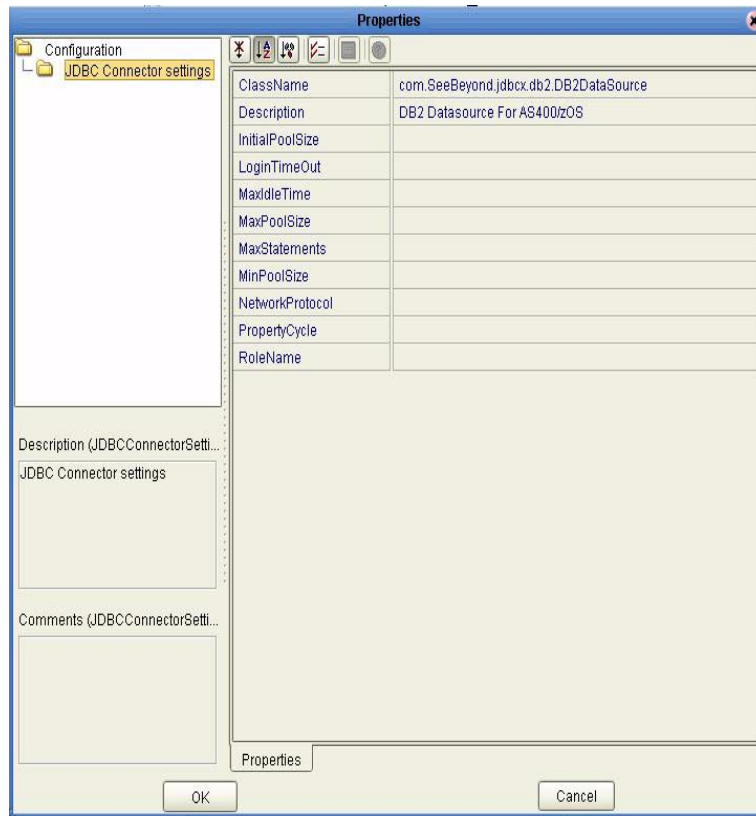
3.2 Properties of the DB2 eWay Connecting to z/OS or an AS/400 Operating System

On the Properties sheet window and using the descriptions below, enter the information necessary for the eWay to establish a connection to the external application.

3.2.1 Setting the Properties of the DB2 eWay Connecting to z/OS or an AS/400 Operating System

To connect to z/OS or an AS/400 operating system, use the properties defined in [“Properties of DB2 eWay on Windows or Unix Operating Systems” on page 10](#) substituting the following properties:

Figure 3 Outbound DB2 eWay Connecting to an AS400



class

Description

Specifies the Java class in the JDBC driver that is used to implement the ConnectionPoolDataSource interface.

Required Values

A valid class name.

The default is **com.SeeBeyond.jdbc.db2.DB2DataSource**.

PortNumber

Description

The TCP port number. PortNumber is used for DataSource connections only.

Required Values

Any valid string. The default port number is 446.

timeout

Description

Specifies the login time-out in seconds.

Required Values

Any valid string. The default is 300 seconds. Delete this parameter from within the eWay Connection's Properties Window. Select the eWay Connection Type. From the eWay Connection Configuration File dialog box, click **New**. Delete the TimeOut parameter by clicking the **Delete** button.

3.2.2 Setting the Environment Properties of the DB2 eWay Connecting to z/OS or an AS/400 Operating Systems

Before deploying your eWay, you will need to set the properties of the eWay environment using the following descriptions.

Figure 4 Properties of the DB2 eWay Connecting to z/OS or an AS/400 Operating System



CollectionID

Description

The collection or group of packages to which a package is bound.

Required Values

Any valid string.

Delimiter

Description

This is the delimiter character to be used in the DriverProperties prompt.

Required Value

The default is #

Description

Description

Enter a description for the database.

Required Value

A valid string.

DriverProperties

Description

If you choose to not to use the JDBC driver that is shipped with this eWay, you will need to add the drivers properties to the eWay. Often times the DataSource implementation will need to execute additional methods to assure a connection. The additional methods will need to be identified in the Driver Properties.

Required Value

Any valid delimiter.

Valid delimiters are: "`<method-name-1>#<param-1>#<param-2>##.....<param-n>##<method-name-2>#<param-1>#<param-2>#.....<param-n>##.....##`".

For example: to execute the method `setURL`, give the method a String for the URL "`setURL#<url>##`".

If you are using Spy Log. Optional:

```
"setURL#jdbc:SeeBeyond:db2://<server>:446;locationName=<location>;collectionId=
<collection>##setLocationName#<location>##setCollectionID#<collection>##setSpyAt
tributes#log=(file)c:/temp/spy.log;logTName=yes###"
```

LocationName

Description

The name of the DB2 location that you want to access.

Required Values

Any valid string.

Password

Description

Specifies the password used to access the database.

Required Values

Any valid string.

PortNumber

Description

Specifies the I/O port number on which the server is listening for connection requests.

Required Values

A valid port number. The default is 446.

ServerName

Description

Specifies the host name of the external database server.

Required Values

Any valid string.

User

Description

Specifies the user name the eWay uses to connect to the database.

Required Values

Any valid string.

Using the DB2 eWay Database Wizard

This chapter describes how to use the DB2 eWay Database Wizard to build OTD's.

This Chapter Includes:

- [Select Wizard Type](#) on page 21
- [Connect to Database](#) on page 22
- [Select Database Objects](#) on page 22
- [Select Table/Views](#) on page 23
- [Select Procedures](#) on page 27
- [Add Prepared Statements](#) on page 28
- [Specify the OTD Name](#) on page 30

4.1 Using the Database OTD Wizard

The Database OTD Wizard generates OTDs by connecting to external data sources and creating corresponding Object Type Definitions. The OTD Wizard can create OTDs based on any combination of Tables and Stored Procedures or Prepared SQL Statements.

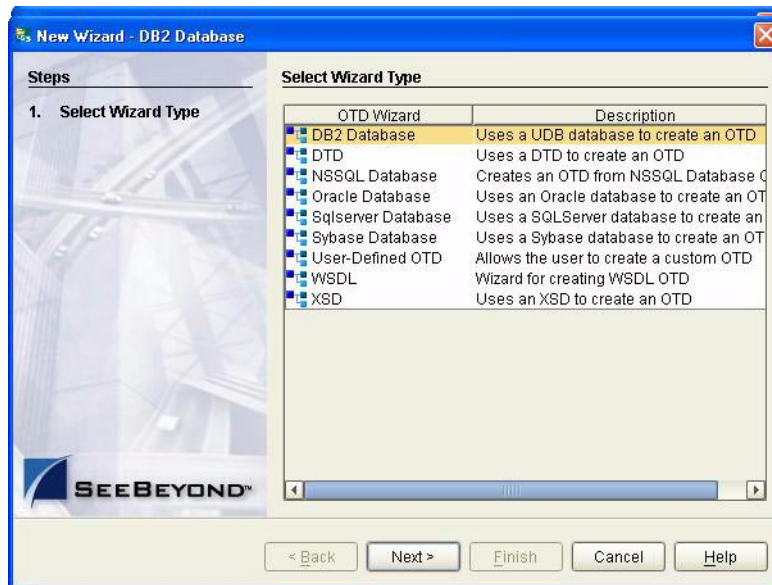
Field nodes are added to the OTD based on the Tables in the external data source. Java method and parameter nodes are added to provide the appropriate JDBC functionality. For more information about the Java methods, refer to your JDBC developer's reference.

Note: *Database OTDs are not messagable. For more information on messagable OTDs, see the eGate Integrator User's Guide.*

Select Wizard Type

- 1 On the Enterprise Explorer, right click on the project and select **Create an Object Type Definition** from the shortcut menu.
- 2 From the OTD Wizard Selection window, select the **DB2 Database** and click **Next**. See [Figure 5](#).

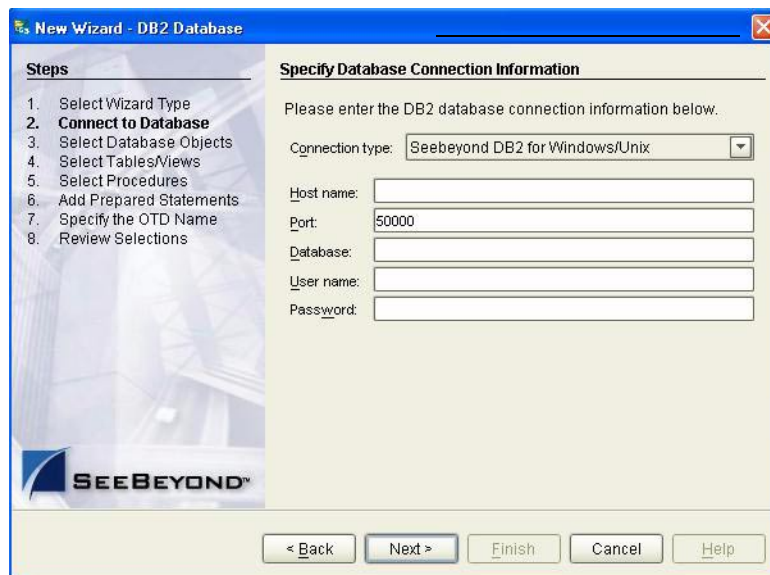
Figure 5 OTD Wizard Selection



Connect to Database

- 3 Specify the **Connection Type** and the general connection information for your database including your **UserName** and **Password** and click **Next**. See [Figure 6](#).

Figure 6 Database Connection Information

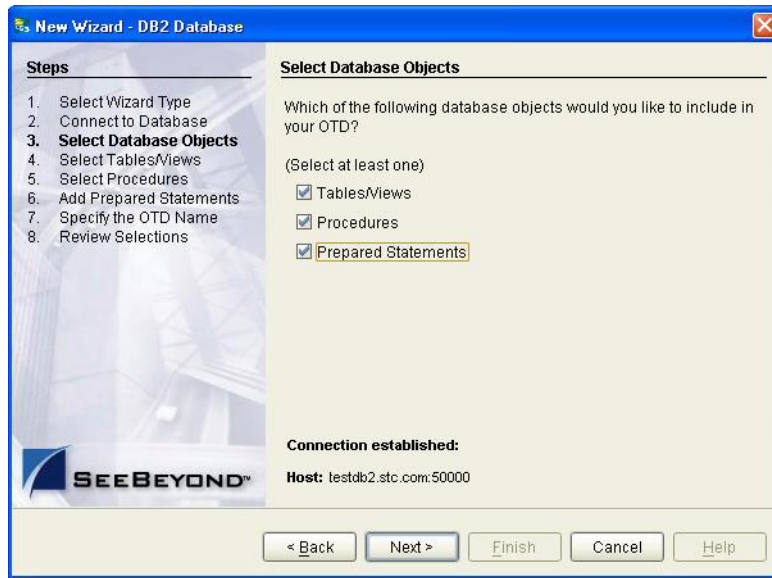


Select Database Objects

- 1 When selecting Database Objects, you can select any combination of **Tables**, **Views**, **Procedures**, or **Prepared Statements** you would like to include in the .otd file. Click **Next** to continue. See [Figure 7](#).

Note: Views are read-only and are for informational purposes only.

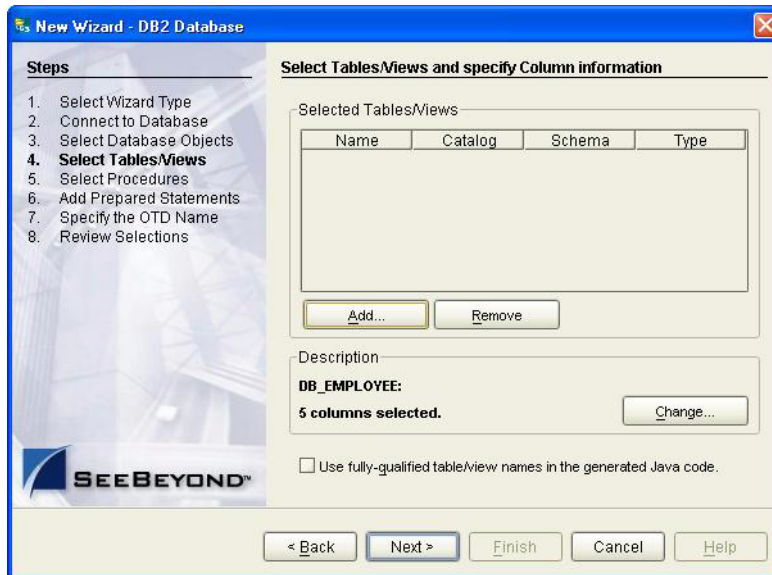
Figure 7 Select Database Objects



Select Table/Views

- 1 In the **Select Tables/Views** window, click **Add**. See [Figure 8](#).

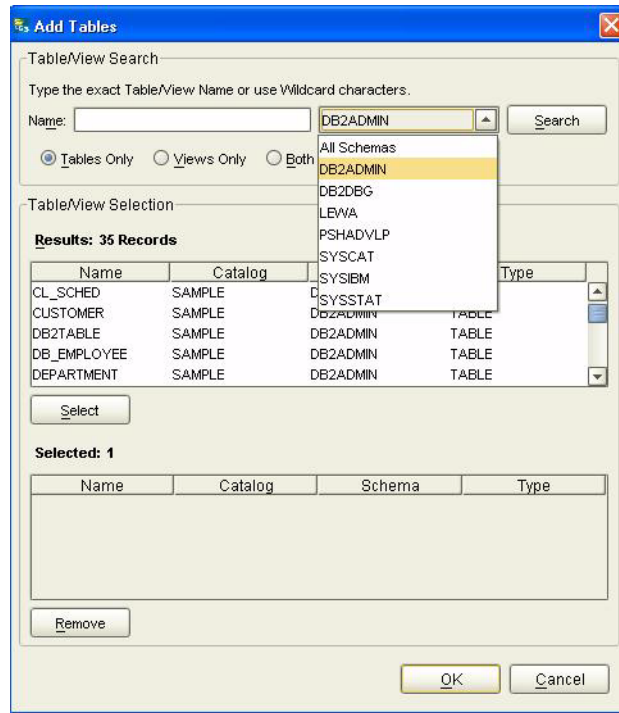
Figure 8 Select Tables/Views



- 2 In the **Add Tables** window, select if your selection criteria will include table data, view only data, both, and/or system tables.

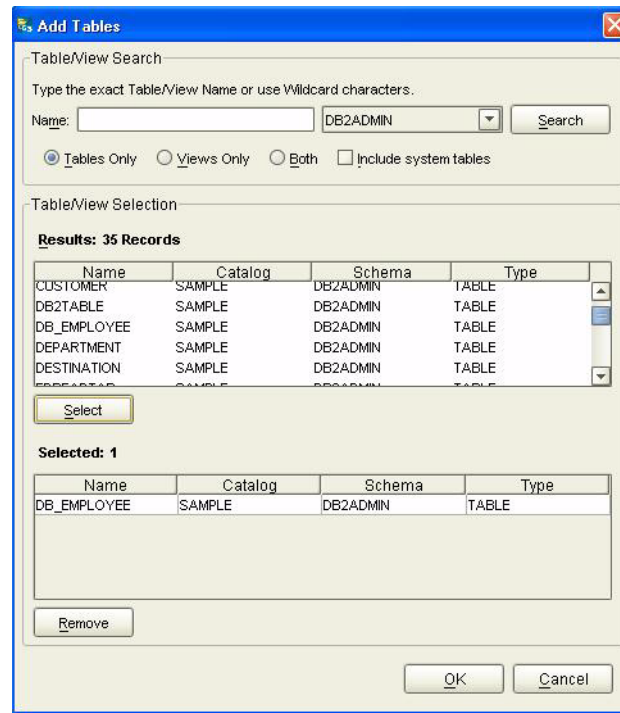
- From the **Table/View Name** drop down list, select the location of your database table and click **Search**. See **Figure 9**. You can search for **Table/View Names** by entering a table name. The use of wildcard characters of '?', and '*' as part of your Table/View name search allow for greater search capabilities. For example, "AB?CD" or "AB*CD".

Figure 9 Database Wizard - All Schemes



- Select the table of choice and click **OK**.
The table selected is added to the **Selected** window. See **Figure 10**.

Figure 10 Selected Tables/Views window with a table selected



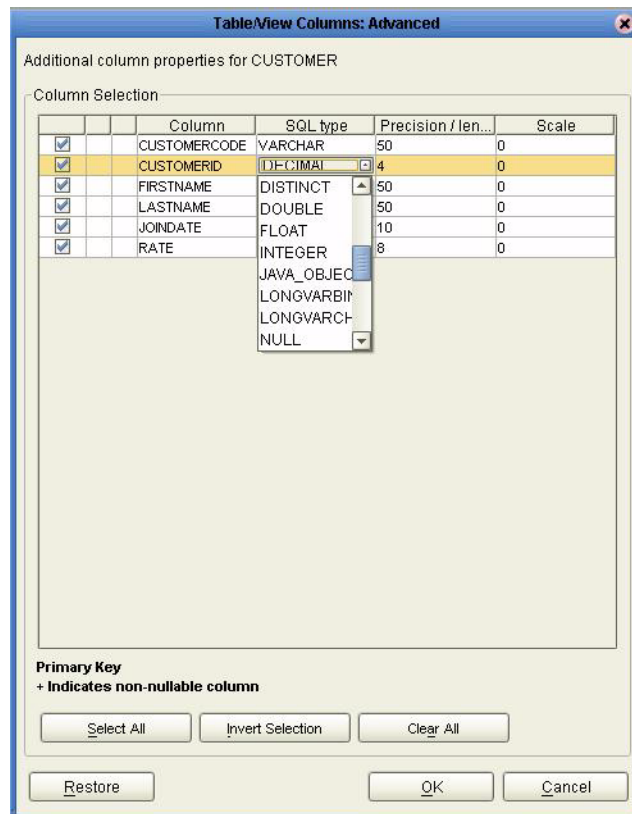
- 5 On the **Selected Tables/Views** window, review the table(s) you have selected. To make changes to the selected Table or View, click **Change**. If you do not wish to make any additional changes, click **Next** to continue.
- 6 If you clicked **Change** on the Selected Tables/Views window, you can select or deselect your table columns on the **Table/View Columns** window. You can also change the data type for each table by highlighting the data type and selecting a different one from the drop down. See [Figure 11](#).

Figure 11 Table/View Columns



- 7 Click **Advanced** to change the data type, precision/length, or scale. In general, do not change the precision/length or the scale. Once you have finished your table choices, click **OK**. See [Figure 12](#).

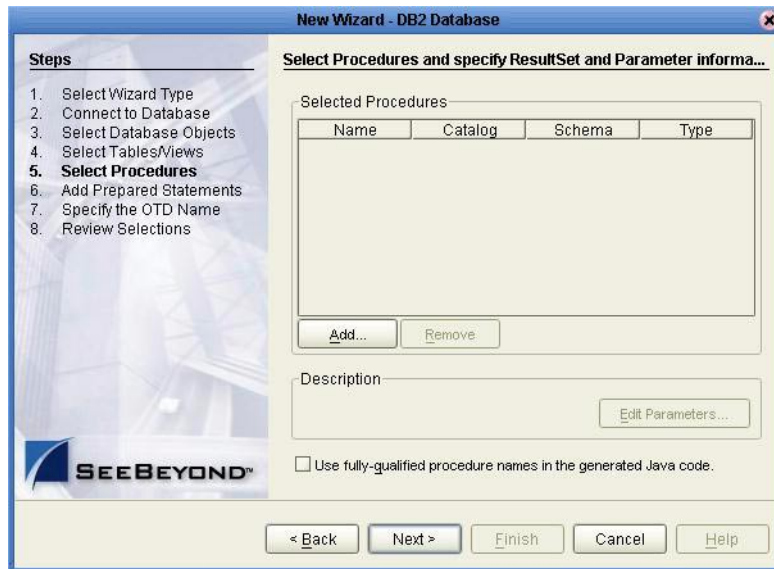
Figure 12 Table/View Columns – Advanced



Select Procedures

- 1 On the **Select Procedures and specify Resultset and Parameter Information** window, click **Add**.

Figure 13 Select Procedures and specify Resultset and Parameter Information



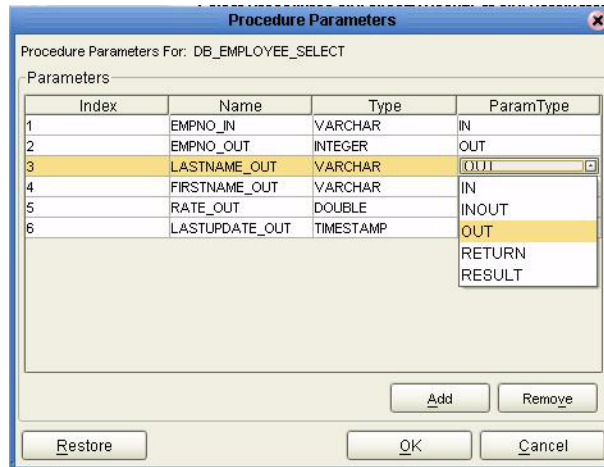
- 2 On the **Select Procedures** window, enter the name of a Procedure or select a table from the drop down list. Click **Search**. Wildcard characters can also be used.
- 3 In the resulting **Procedure Selection** list box, select a Procedure. Click **OK**.

Figure 14 Add Procedures



- 4 On the **Select Procedures and specify Resultset and Parameter Information** window click **Edit Parameters** to make any changes to the selected Procedure. See **Figure 15**.

Figure 15 Procedure Parameters

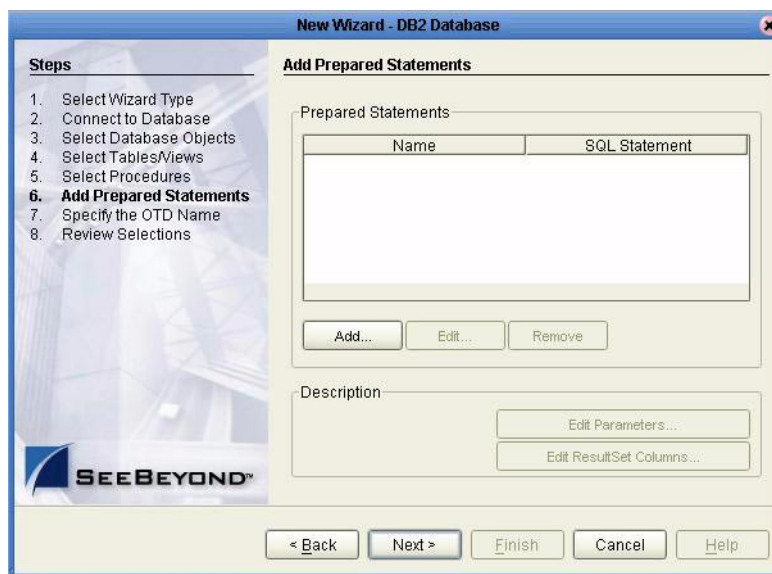


- 5 To restore the data type, click **Restore**. When finished, click **OK**.
- 6 On the **Select Procedures and specify Resultset and Parameter Information** window click **Next** to continue.

Add Prepared Statements

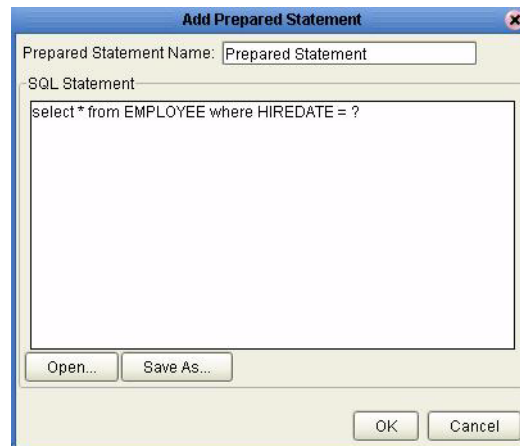
- 1 On the **Add Prepared Statements** window, click **Add**.

Figure 16 Prepared Statement



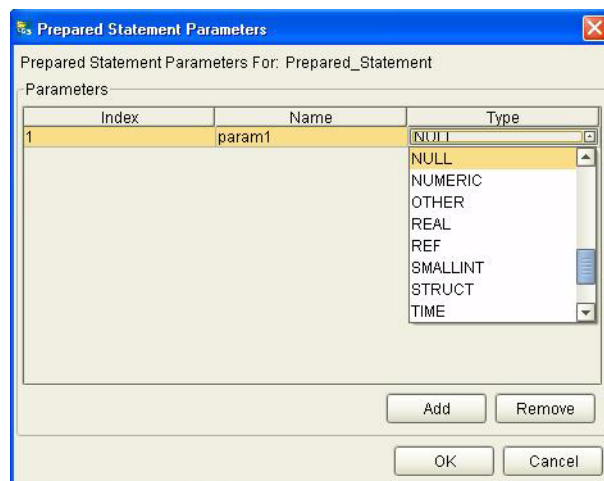
- 2 Enter the name of a Prepared Statement or create a SQL statement by clicking in the SQL Statement window. When finished creating the statement, click **Save As** giving the statement a name. This name will appear as a node in the OTD. Click **OK**. See [Figure 17](#).

Figure 17 Prepared SQL Statement



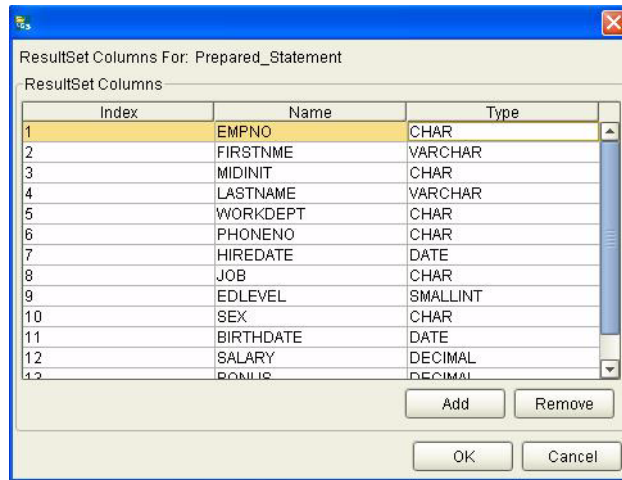
- 3 On the **Add Prepared Statement** window, the name you assigned to the Prepared Statement appears. To edit the parameters, click **Edit Parameters**. You can change the datatype by clicking in the **Type** field and selecting a different type from the list.
- 4 Click **Add** if you want to add additional parameters to the Statement or highlight a row and click **Remove** to remove it. Click **OK**. See [Figure 18](#).

Figure 18 Edit the Prepared Statement Parameters



- 5 To edit the Resultset Columns, click **Edit Resultset Columns**. Both the Name and Type are editable but it is recommend you do not changed the Name. Doing so will cause a loss of inegraty between the Resultset and the Database. Click **OK**. See [Figure 19](#).

Figure 19 ResultSet Columns



- 6 On the Add Prepared Statements window, click **OK**.

Specify the OTD Name

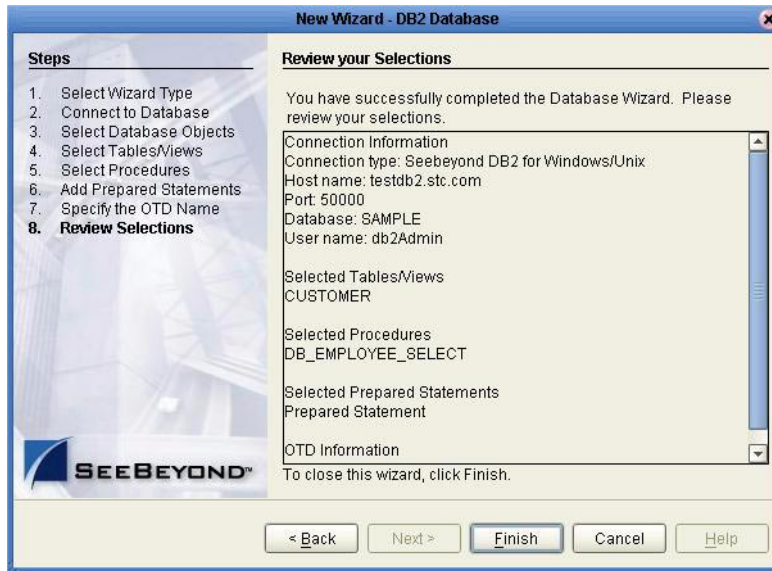
- 1 Enter a name for the OTD. The OTD contains the selected tables and the package name of the generated classes. See [Figure 20](#).

Figure 20 Naming an OTD



- 2 View the summary of the OTD. If you find you have made a mistake, click **Back** and correct the information. If you are satisfied with the OTD information, click **Finish** to begin generating the OTD. See [Figure 21](#).

Figure 21 Database Wizard - Summary



The resulting OTD will appear on the Enterprise Designer's canvas.

Building an eWay Project

This chapter discusses how to build a DB2 eWay project in a production environment.

This Chapter Includes:

- [eInsight Engine and eGate Components](#) on page 32
- [Using the Sample Project in eInsight](#) on page 32
- [Using the Sample Project in eGate](#) on page 44
- [Common DataType Conversions](#) on page 46
- [Using OTDs with Tables, Views, and Stored Procedures](#) on page 48
- [Alerting and Logging](#) on page 53

5.1 eInsight Engine and eGate Components

You can deploy an eGate component as an Activity in an eInsight Business Process. Once you have associated the desired component with an Activity, the eInsight engine can invoke it using a Web Services interface. Examples of eGate components that can interface with eInsight in this way are:

- Java Messaging Service (JMS)
- Object Type Definitions (OTDs)
- An eWay
- Collaborations

Using the eGate Enterprise Designer and eInsight, you can add an Activity to a Business Process, then associate that Activity with an eGate component, for example, an eWay. When eInsight runs the Business Process, it automatically invokes that component via its Web Services interface.

5.2 Using the Sample Project in eInsight

To begin using the sample eInsight Business Process project, you will need to import the project and view it from within the Enterprise Designer using the Enterprise

Designer Project Import utility. Import the **DB2_sampleBPEL.zip** file contained in the eWay sample folder on the installation CD-ROM.

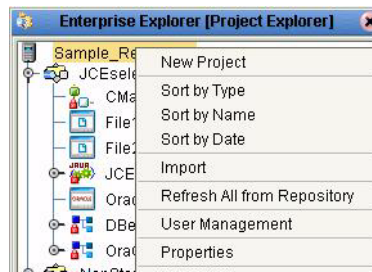
Note: *eInsight is a Business Process modeling tool. If you have not purchased eInsight, contact your sales representative for information on how to do so.*

Before recreating the sample Business Process, review the *eInsight Business Process Manager User's Guide* and the *eGate Tutorial*.

Importing the Sample Project

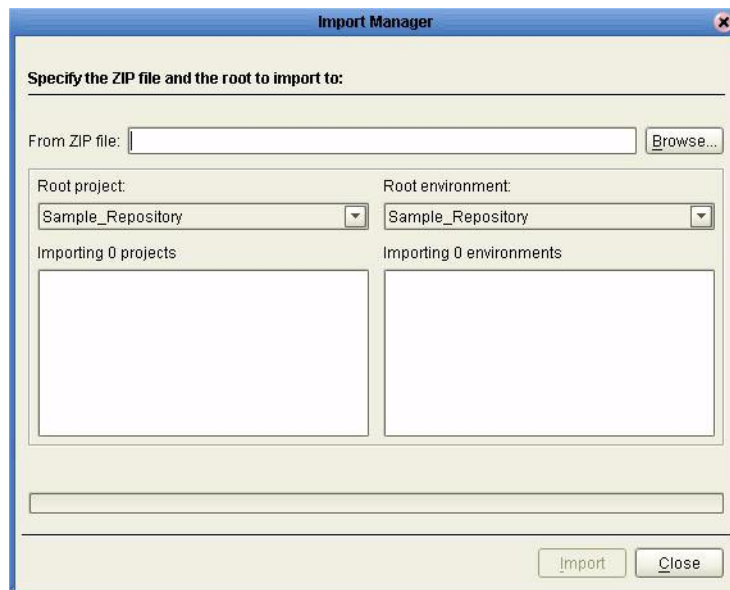
- 1 On the Enterprise Explorer highlight the repository and right click. Select **Import Project**. See [Figure 22](#).

Figure 22 Importing the sample project



- 2 In the **Import Manager** window, **From ZIP file** browse to the location of the sample folder and select the following .zip file **DB2_sampleBPEL.zip** and click **Import**. See [Figure 23](#).

Figure 23 Select the project file destination



- 3 Click the **Refresh All From Repository** icon located on the **Enterprise Explorer** toolbar.

The Business Process

The data used for this sample project is contained within a table called DBEmployee. The table has the following columns:

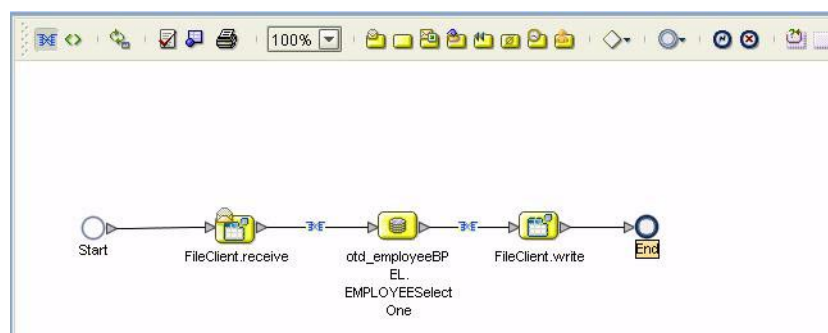
Table 1 Sample Project Data

Column Name	Mapping	Data Type	Data Length
EMPNO	EMPNO	char	6
FIRSTNME	FIRSTNME	varchar	12
MIDINIT	MIDINIT	char	1
LASTNAME	LASTNAME	varchar	15
WORKDEPT	WORKDEPT	char	3
PHONENO	PHONENO	char	4
HIREDATE	HIREDATE	date	4
JOB	JOB	char	8
EDLEVEL	EDLEVEL	smallint	2
SEX	SEX	char	1
BIRTHDATE	BIRTHDATE	date	4
SALARY	SALARY	decimal	9
BONUS	BONUS	decimal	9
COMM	COMM	decimal	9

The sample project consists of an input file containing data that is passed into a database collaboration, and then written out to an output file

- 4 Refer to the *eInsight Business Process Manager User's Guide* for specific information on how to create and use a Business Process.

Figure 24 Sample Project Business Process



You can associate an eInsight Business Process Activity with the eWay, both during the system design phase and during run time. To make this association, select the desired **receive** or **write** operation under the eWay in the Enterprise Explorer and drag it onto the eInsight Business Process canvas. The following operations are available:

- SelectAll
- SelectMultiple
- SelectOne
- Insert
- Update
- Delete

The operation automatically changes to an Activity with an icon identifying the component that is the basis for the Activity.

At run time, the eInsight engine invokes each step in the order that you defined in the Business Process. Using the engine's Web Services interface, the Activity in turn invokes the DB2 eWay. You can open a file specified in the eWay and view its contents before and after the Business Process is executed.

The table below shows the inputs and outputs to each of these eInsight operations:

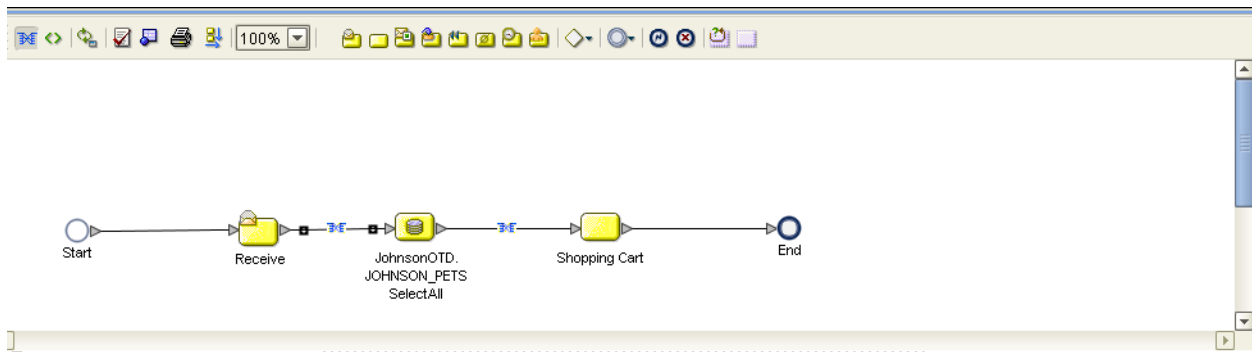
eInsight Operation	Input	Output
SelectAll	where() clause (optional)	Returns all rows that fit the condition of the where() clause
SelectMultiple	number of rows where() clause. Optional	Returns the number of rows specified that fit the condition of the where() clause
SelectOne	number of rows where() clause. Optional	Returns the first row that fits the condition of the where() clause
Insert	definition of new item to be inserted	Returns status.
Update	where() clause	Returns status.
Delete	where() clause	Returns status.

5.2.1 SelectAll

The input to a SelectAll operation is an optional where() clause. The where() clause defines to which criteria rows must adhere to be returned. In the SelectAll operation, all items that fit the criteria are returned. If the where() clause is not specified, all rows are returned.

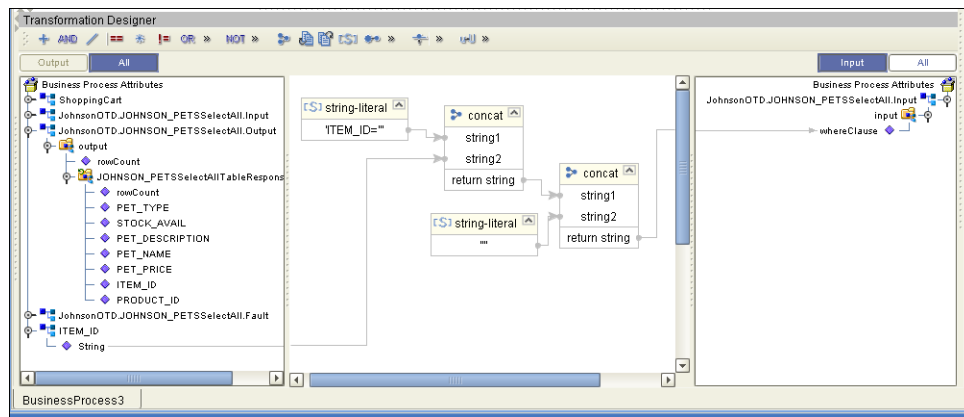
The figure below shows a sample eInsight Business Process using the SelectAll operation. In this process, the SelectAll operation returns all rows where the ITEM_ID matches the selected ITEM_ID to the shopping cart.

Figure 25 SelectAll Sample Business Process



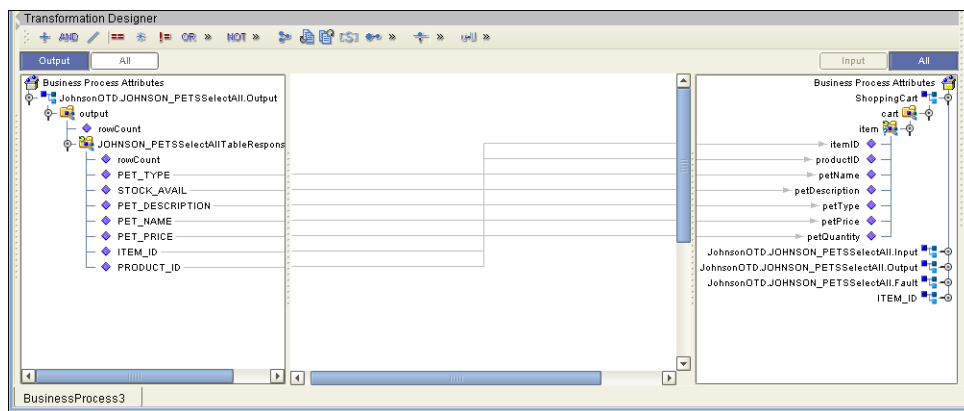
The figure below shows the definition of the where() clause for the SelectAll operation.

Figure 26 SelectAll Input



The figure below shows the definition of the output for the SelectAll operation. For each row selected during the operation, the shopping cart shows the columns of those rows as defined here.

Figure 27 SelectAll Output

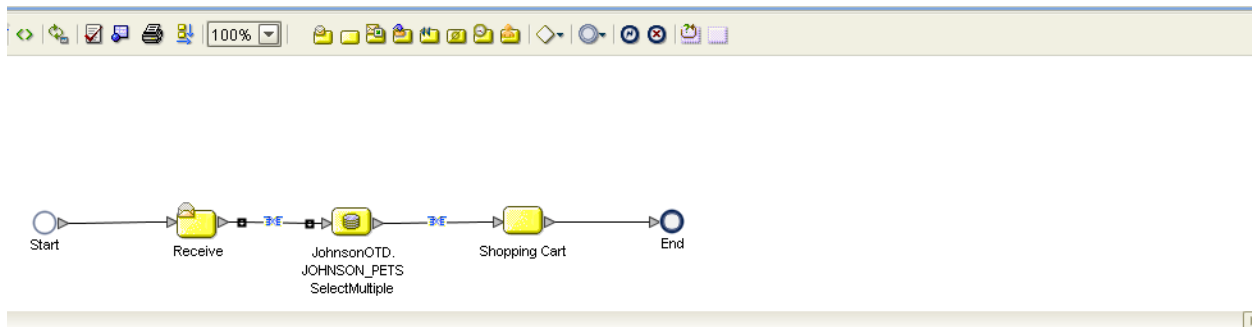


5.2.2 SelectMultiple

The input to a SelectMultiple operation is the number of rows to be selected and a where() clause. The number of rows indicates how many rows the SelectMultiple operation returns. The where() clause defines to which criteria rows must adhere to be returned.

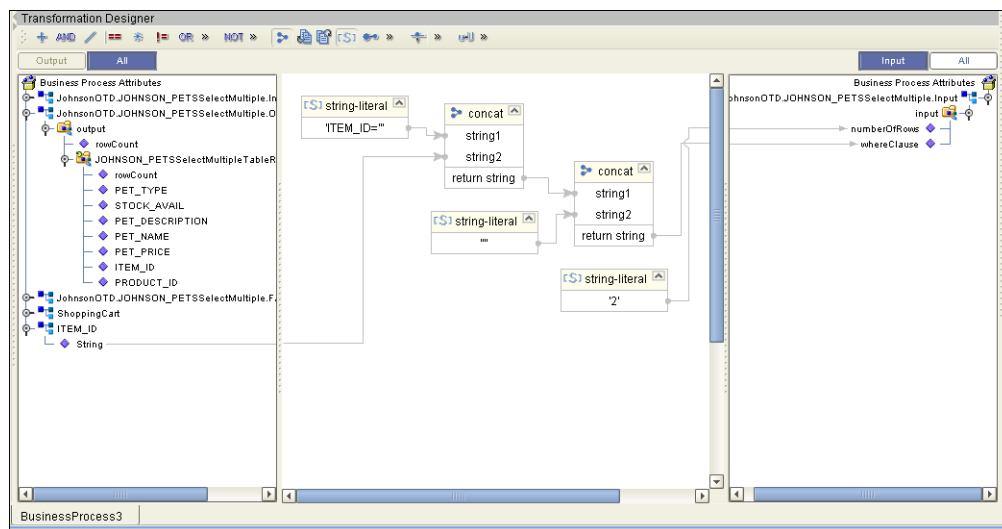
The figure below shows a sample eInsight Business Process using the SelectMultiple operation. In this process, the SelectMultiple operation returns the first two rows where the ITEM_ID matches the selected ITEM_ID to the shopping cart.

Figure 28 SelectMultiple Sample Business Process



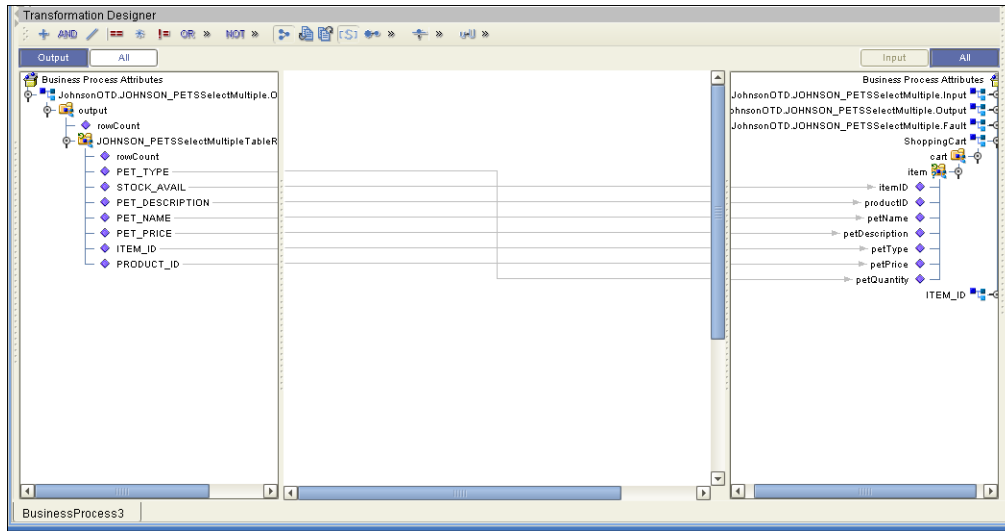
The figure below shows the definition of the number of rows and where() clause into the input for the SelectMultiple operation. You could also use an empty string or Item_ID='123'.

Figure 29 SelectMultiple Input



The figure below shows the definition of the output for the SelectMultiple operation. For each row selected during the operation, the shopping cart shows the columns of those rows as defined here.

Figure 30 SelectMultiple Output

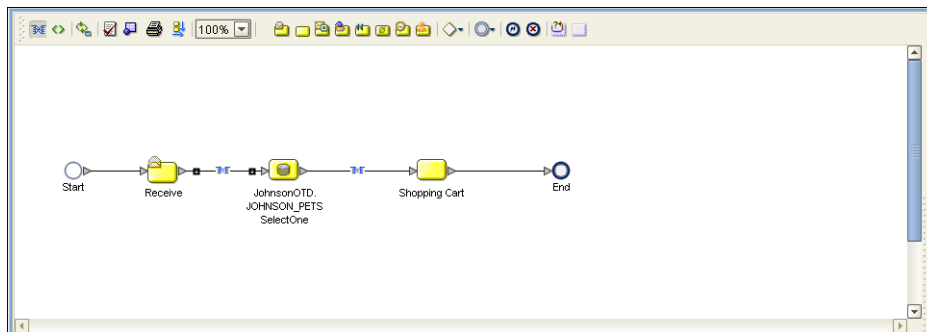


5.2.3 SelectOne

The input to a SelectOne operation is a where() clause. The where() clause defines to which criteria rows must adhere to be selected for the operation. In the SelectOne operation, the first row that fits the criteria is returned.

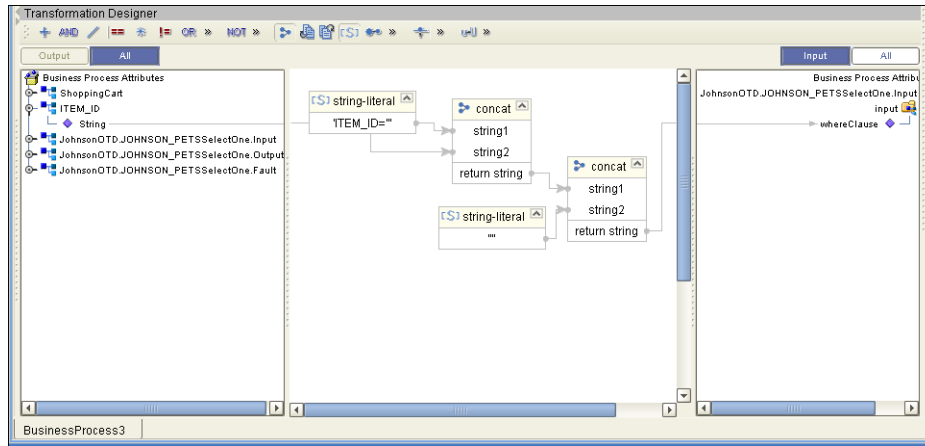
The figure below shows a sample eInsight Business Process using the SelectOne operation. In this process, the SelectOne operation returns the first row where the ITEM_ID matches the specified ITEM_ID to the shopping cart.

Figure 31 SelectOne Sample Business Process



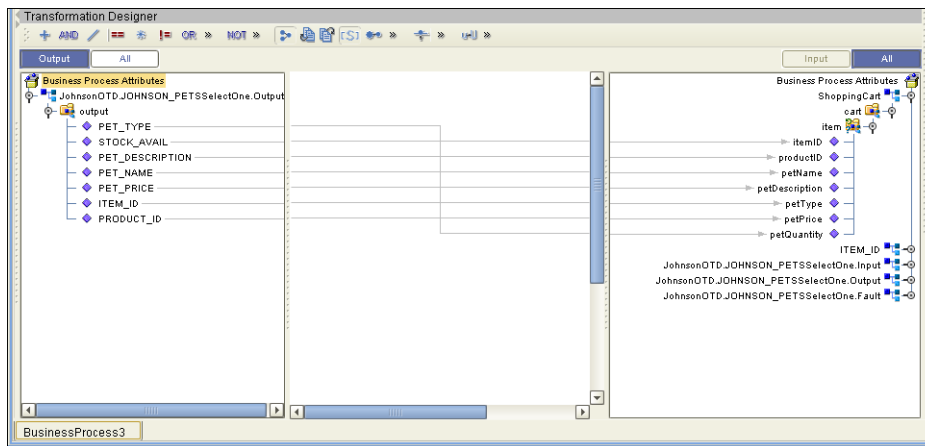
The figure below shows the definition of the where() clause for the SelectOne operation.

Figure 32 SelectOne Input



The figure below shows the definition of the output for the SelectOne operation. For the first row selected during the operation, the shopping cart shows the columns of that row as defined here.

Figure 33 SelectOne Output

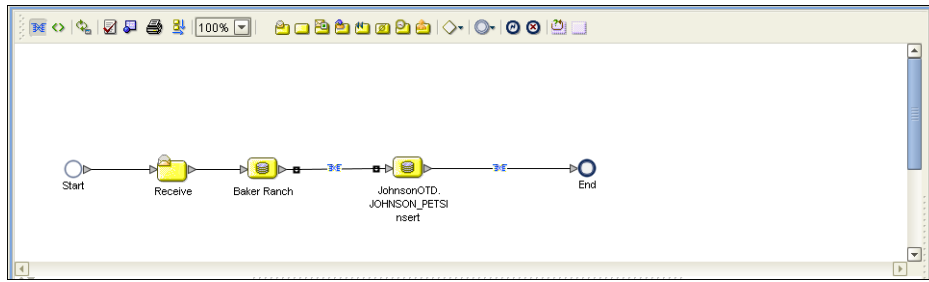


5.2.4 Insert

The Insert operation inserts a row. The input to an Insert operation is a where() clause. The where() clause defines to which criteria rows must adhere to be selected for the operation. In the Insert operation, the first row that fits the criteria is returned.

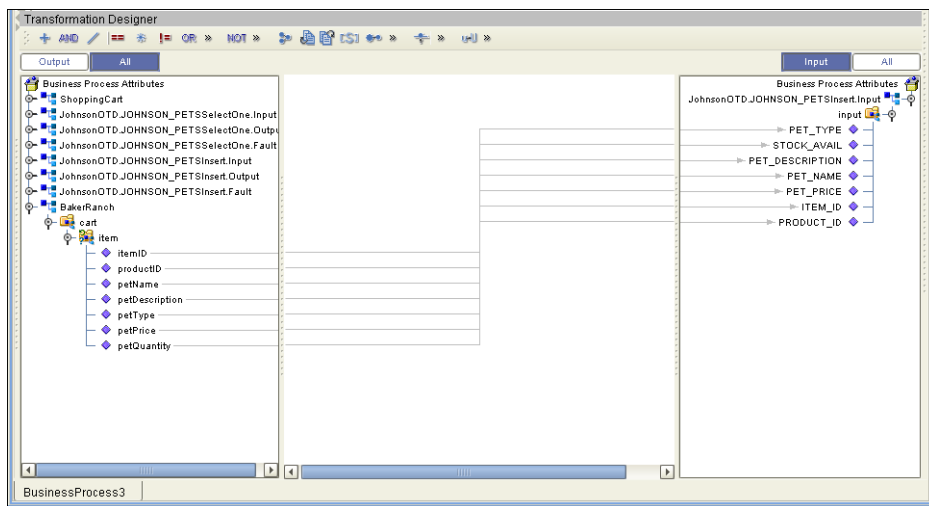
The figure below shows a sample eInsight Business Process using the Insert operation. In this process, the operation inserts a new row into the database to accommodate a new item provided by a vendor.

Figure 34 Insert Sample Business Process



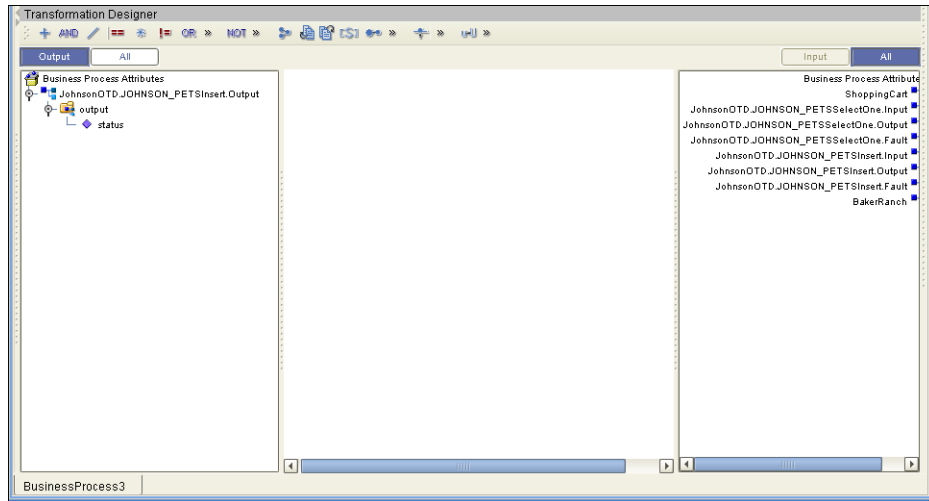
The figure below shows the definition of the input for the Insert operation.

Figure 35 Insert Input



The figure below shows the output of the Insert operation, which is a status indicating the number of rows created.

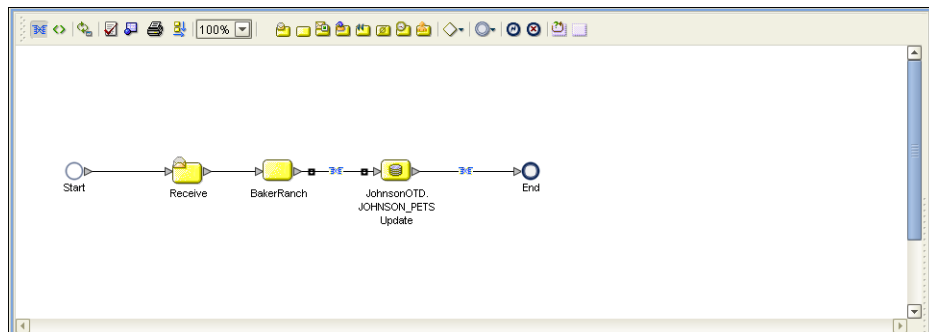
Figure 36 Insert Output



5.2.5 Update

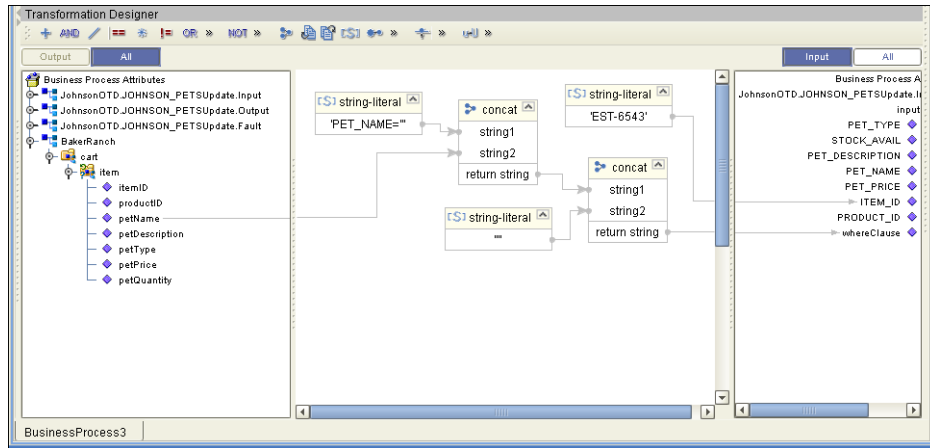
The Update operation updates rows that fit certain criteria defined in a where() clause. The figure below shows a sample eInsight Business Process using the Update operation. In this process, the operation updates the ITEM_ID for all items with a certain name to ESR_6543.

Figure 37 Update Sample Business Process



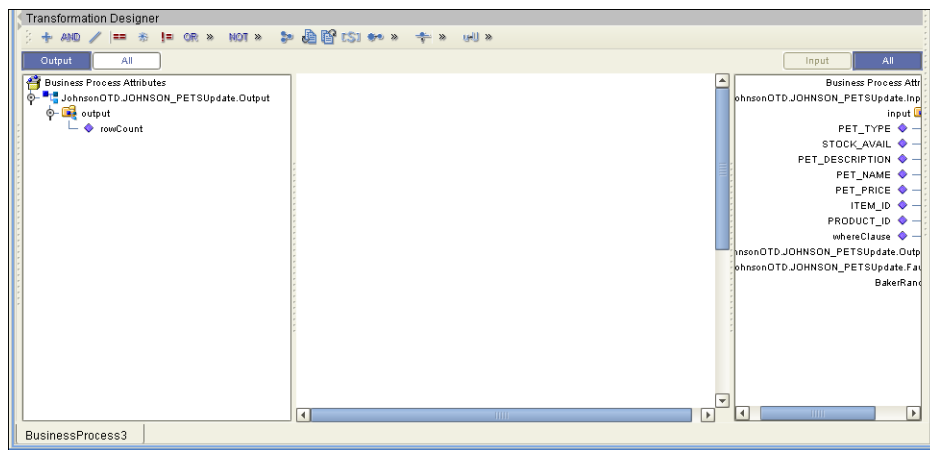
The figure below shows the definition of the where() clause for the Update operation.

Figure 38 Update Input



The figure below shows the output of the Update operation, which is a status indicating the number of rows updated.

Figure 39 Update Output



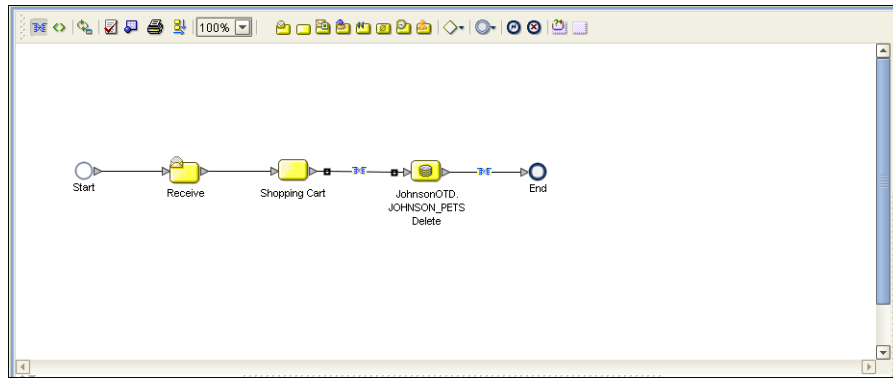
5.2.6 Delete

The Delete operation deletes rows that match the criteria defined in a where() clause. The output is a status of how many rows were deleted.

The figure below shows a sample eInsight Business Process using the Delete operation. In this process, the operation deletes rows with a certain product ID from the shopping cart.

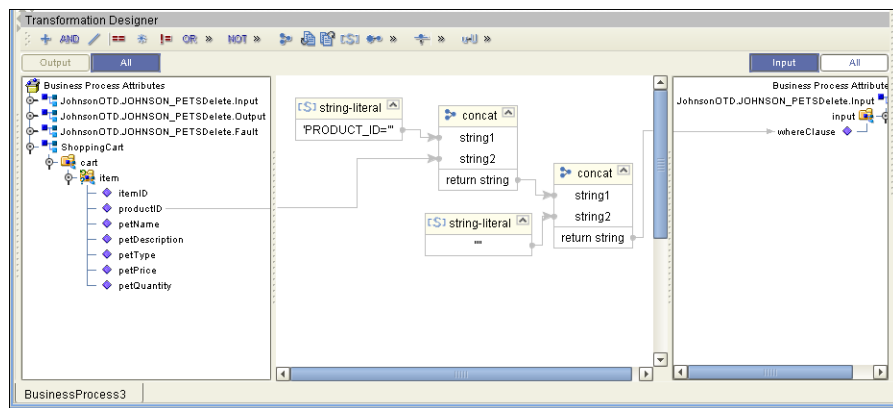
Note: If a where() clause is not defined, all rows will be deleted.

Figure 40 Delete Sample Business Process



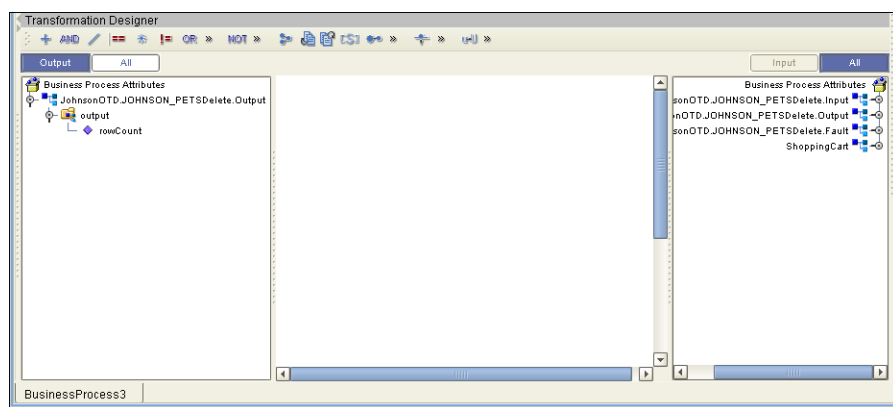
The figure below shows the definition of the where() clause for the Delete operation.

Figure 41 Delete Input



The figure below shows the output of the Delete operation, which is a status indicating the number of rows deleted.

Figure 42 Delete Output



5.3 Using the Sample Project in eGate

To import the sample project **DB_sampleJCE.zip** follow the instructions given in [Importing the Sample Project](#) on page 33.

5.3.1. Working with the Sample Project in eGate

This sample project selects columns from the table DBEmployee and publishes the record to an output file.

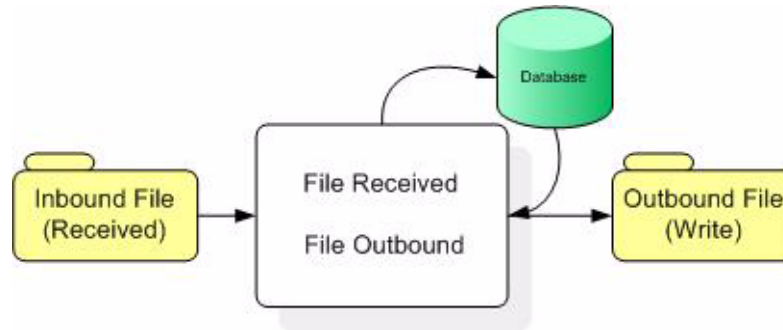
The data used for this projects is within a table called DBEmployee. The table contains the following columns:

Table 2 Sample Project Data

Column Name	Mapping	Data Type	Data Length
EMPNO	EMPNO	char	6
FIRSTNME	FIRSTNME	varchar	12
MIDINIT	MIDINIT	char	1
LASTNAME	LASTNAME	varchar	15
WORKDEPT	WORKDEPT	char	3
PHONENO	PHONENO	char	4
HIREDATE	HIREDATE	date	4
JOB	JOB	char	8
EDLEVEL	EDLEVEL	smallint	2
SEX	SEX	char	1
BIRTHDATE	BIRTHDATE	date	4
SALARY	SALARY	decimal	9
BONUS	BONUS	decimal	9
COMM	COMM	decimal	9

The sample project consists of an input file containing data that is passed into a collaboration and out to the database from which data is retrieved and passed back into the collaboration and then to an output file.

Figure 43 Database project flow



To work with the sample project, follow the instructions given in the *eGate Tutorial*.

5.3.2. Configuring the eWays

The sample uses an inbound and an outbound File eWay as well as an outbound DB2 eWay. To configure the sample projects eWays, use the following information. For additional information on the DB2 properties, see [Properties of DB2 eWay on Windows or Unix Operating Systems](#) on page 10.

To configure the Inbound File eWay:

- 1 On the Connectivity Map canvas, double click the eWay icon located between the **File1** and **Service1**.
- 2 On the resulting **Templates** window, select **Inbound File eWay** and click **OK**.
- 3 On the **Properties** window, enter the appropriate configurations for the Inbound File eWay. See the *File eWay User's Guide* for information on how to specifically configure the File eWay. For this sample, the default settings are used.
- 4 When you have completed your selections, click **OK**.

To configure the Outbound DB2 eWay:

- 1 On the Connectivity Map canvas, double click the eWay icon located between the **Service1** and **DB2** database.
- 2 On the resulting **Templates** window, select **Outbound DB2** and click **OK**.
- 3 On the **Properties** window, enter the appropriate configurations for the Outbound DB2 eWay and click **OK**. See [Properties of DB2 eWay on Windows or Unix Operating Systems](#) on page 10. For this sample, the default settings are used.
- 4 When you have completed your selections, click **OK**.

To configure the Outbound File eWay:

- 1 On the Connectivity Map canvas, double click the eWay icon located between **Service1** and **File2** eWay.
- 2 On the resulting **Templates** window, select **Outbound File eWay** and click **OK**.
- 3 On the **Properties** window, enter the appropriate configurations for the Outbound File eWay. See the *File eWay User's Guide* for information on how to specifically

configure the File eWay. For this sample, change the Directory field to **<valid path to the directory where the output file will be stored>**. The Output File Name to **Output1.dat**. For the remaining parameters, the default settings are used.

- 4 When you have completed your selections, click **OK**.

5.3.3. Creating an External Environment

To review the components of the Sample project, there is an Inbound and an Outbound File eWay, an eWay, and a Service.

To create the external environment for the Sample project:

- 5 On the Environment Explorer, highlight and right-click the DB2 profile. Select **Properties**. Enter the configuration information required for your Outbound DB2 eWay. See [Properties of DB2 eWay on Windows or Unix Operating Systems](#) on page 10.

5.3.4 Deploying a Project

To deploy a project, please see the “*eGate Integrators User’s Guide*”.

5.3.5. Running the Sample

For instruction on how to run the Sample project, see the *eGate Tutorial*.

Once the process has completed, the Output file in the target directory configured in the Outbound File eWay will contain all records retrieved from the database.

5.4 Common DataType Conversions

Table 3 The DB2 eWay Insert or Update Operations for Text/String Input Data

DB2 Data Type	OTD/Java Data Type	Java Method or New Constructor to Use (Default: Java Method)	Sample Data
Int	Int	Integer java.lang.Integer.parseInt(String)	123
Smallint	BigDecimal	Call a New Constructor BigDecimal: java.math.BigDecimal(String)	123
Number	BigDecimal	Call a New Constructor BigDecimal: java.math.BigDecimal(String)	123
Decimal	BigDecimal	Call a New Constructor BigDecimal: java.math.BigDecimal(String)	123

DB2 Data Type	OTD/Java Data Type	Java Method or New Constructor to Use (Default: Java Method)	Sample Data
BigInteger	Long	Long: java.lang.Long.parseLong(String)	123
Short	Short	Short: java.lang.Short.parseShort(String)	123
Real	Float	Float: java.lang.Float.parseFloat(String)	2454.56
Float	Double	Double: java.sql.Double.parseDouble(String)	2454.56
Double	Double	Double: java.sql.Double.parseDouble(String)	2454.56
Timestamp	Timestamp	TimeStamp: java.sql.TimeStamp.valueOf(String)	2003-09-04 23:55:59
Time	Time	Time: java.sql.Time.valueOf(String)	11:15:33
Date	Date	Date: java.sql.Date.valueOf(String)	2003-09-04
Varchar2	String	Direct Assign	Any character
Char	String	Direct Assign	Any character

Table 4 The DB2 eWay Insert or Update Operations for Text/String Output Data

DB2 Data Type	OTD/Java Data Type	Java Method or New Constructor to Use (Default: Java Method)	Sample Data
Int	Integer	Integer java.lang.Integer.toString(Int)	123
Smallint	BigDecimal	BigDecimal: java.math.BigDecimal.toString()	123
Number	BigDecimal	BigDecimal: java.math.BigDecimal.toString()	123
Decimal	BigDecimal	BigDecimal: java.math.BigDecimal.toString()	123
Short	Short	Short: java.lang.Short.toString(short)	123

DB2 Data Type	OTD/Java Data Type	Java Method or New Constructor to Use (Default: Java Method)	Sample Data
Real	Float	Float: java.lang.Float.toString(Float)	2454.56
Float	Double	Double: java.sql.Double.parseDouble(String)	2454.56
Double	Double	Double: java.sql.Double.parseDouble(String)	2454.56
Timestamp	Timestamp	TimeStamp: java.sql.TimeStamp.toString()	2003-09-04 23:55:59
Time	Time	Time: java.sql.Time.toString()	11:15:33
Date	TimeStamp	Date: java.sql.Date.toString()	2003-09-04
Varchar2	String	Direct Assign	Any character
Char	String	Direct Assign	Any character

5.5 Using OTDs with Tables, Views, and Stored Procedures

Tables, Views, and Stored Procedures are manipulated through OTDs. Common operations include insert, delete, update, and query.

5.5.1 The Table

A table OTD represents a database table. It consists of fields and methods. Fields correspond to the columns of a table while methods are the operations that you can apply to the OTD. This allows you to perform query, update, insert, and delete SQL operations in a table.

By default, the Table OTD has `UpdatableConcurrency` and `ScrollTypeForwardOnly`. The type of result returned by the `select()` method can be specified using:

- `SetConcurrencytoUpdatable`
- `SetConcurrencytoReadOnly`
- `SetScrollTypetoForwardOnly`
- `SetScrollTypetoScrollSensitive`
- `SetScrollTypetoInsensitive`

The methods should be called before executing the `select()` method. For example,


```
getDBEmp().setConcurToUpdateable();  
getDBEmp().setScroll_TypeToScrollSensitive();  
getDBEmp().getDB_EMPLOYEE().select("");
```

The Query Operation

To perform a query operation on a table

- 1 Execute the **select()** method with the “**where**” clause specified if necessary.
- 2 Loop through the **ResultSet** using the **next()** method.
- 3 Process the return record within a **while()** loop.

For example:

```
package SelectSales;  
  
public class Select  
{  
  
    public com.stc.codegen.logger.Logger logger;  
  
    public com.stc.codegen.alerter.Alerter alerter;  
  
    public void receive(  
com.stc.connector.appconn.file.FileTextMessage  
input, com.stc.connector.appconn.file.FileApplication  
FileClient_1, db_employee.Db_employeeOTD  
db_employee_1, employeeDb.Db_employee employeeDb_db_employee_1 )  
    throws Throwable  
    {  
        //@map:Db_employee.select(Text)  
        db_employee_1.getDb_employee().select( input.getText() );  
  
        //while  
        while (db_employee_1.getDb_employee().next()) {  
            //@map:Copy EMP_NO to Employee_no  
            employeeDb_db_employee_1.setEmployee_no(  
java.lang.Integer.toString(  
db_employee_1.getDb_employee().getEMP_NO() ) );  
  
            //@map:Copy LAST_NAME to Employee_lname  
            employeeDb_db_employee_1.setEmployee_lname(  
db_employee_1.getDb_employee().getLAST_NAME() );  
  
            //@map:Copy FIRST_NAME to Employee_fname  
            employeeDb_db_employee_1.setEmployee_fname(  
db_employee_1.getDb_employee().getFIRST_NAME() );  
  
            //@map:Copy RATE to Rate  
            employeeDb_db_employee_1.setRate(  
java.lang.Double.toString(  
db_employee_1.getDb_employee().getRATE() ) );  
  
            //@map:Copy LAST_UPDATE to Update_date  
            employeeDb_db_employee_1.setUpdate_date(  
db_employee_1.getDb_employee().getLAST_UPDATE().toString() );  
        }  
  
        //@map:Copy employeeDb_db_employee_1.marshallToString to  
Text  
        FileClient_1.setText(  
employeeDb_db_employee_1.marshallToString() );  
    }  
}
```

```
        //@map:FileClient_1.write
        FileClient_1.write();
    }
}
```

The Insert Operation

To perform an insert operation on a table

- 1 Execute the **insert()** method. Assign a field.
- 2 Insert the row by calling **insertRow()**

This example inserts an employee record.

```
//DB_EMPLOYEE.insert
Table_OTD_1.getDB_EMPLOYEE().insert();

//Copy EMP_NO to EMP_NO
insert_DB_1.getInsert_new_employee().setEmployee_no(
    java.lang.Integer.parseInt(
        employeedb_with_top_db_employee_1.getEmployee_no() ) );

//@map:Copy Employee_lname to Employee_Lname
insert_DB_1.getInsert_new_employee().setEmployee_Lname(
    employeedb_with_top_db_employee_1.getEmployee_lname() );

//@map:Copy Employee_fname to Employee_Fname
insert_DB_1.getInsert_new_employee().setEmployee_Fname(
    employeedb_with_top_db_employee_1.getEmployee_fname() );

//@map:Copy java.lang.Float.parseFloat(Rate) to Rate
insert_DB_1.getInsert_new_employee().setRate(
    java.lang.Float.parseFloat(
        employeedb_with_top_db_employee_1.getRate() ) );

//@map:Copy java.sql.Timestamp.valueOf(Update_date) to Update_date
insert_DB_1.getInsert_new_employee().setUpdate_date(
    java.sql.Timestamp.valueOf(
        employeedb_with_top_db_employee_1.getUpdate_date() ) );
Table_OTD_1.getDB_EMPLOYEE().insertRow();

//Table_OTD_1.commit
Table_OTD_1.commit();
}
```

The Update Operation

To perform an update operation on a table

- 1 Execute the **update()** method.
- 2 Using a while loop together with **next()**, move to the row that you want to update.
- 3 Assign updating value(s) to the fields of the table OTD
- 4 Update the row by calling **updateRow()**.

```
//SalesOrders_with_top_SalesOrders_1.unmarshalFromString(Text)
SalesOrders_with_top_SalesOrders_1.unmarshalFromString(
    input.getText() );
```

```
//SALES_ORDERS.update("SO_num =99")
  DB_sales_orders_1.getSALES_ORDERS().update( "SO_num ='01' " );

//while
  while (DB_sales_orders_1.getSALES_ORDERS().next()) {

//Copy SalesOrderNum to SO_num
  DB_sales_orders_1.getSALES_ORDERS().setSO_num(
  SalesOrders_with_top_SalesOrders_1.getSalesOrderNum() );

//Copy CustomerName to Cust_name
  DB_sales_orders_1.getSALES_ORDERS().setCust_name(
  SalesOrders_with_top_SalesOrders_1.getCustomerName() );

//Copy CustomerPhone to Cust_phone
  DB_sales_orders_1.getSALES_ORDERS().setCust_phone(
  SalesOrders_with_top_SalesOrders_1.getCustomerPhone() );

//SALES_ORDERS.updateRow
  DB_sales_orders_1.getSALES_ORDERS().updateRow();
}
//DB_sales_orders_1.commit
  DB_sales_orders_1.commit();

//Copy "Update completed" to Text
  FileClient_1.setText( "Update completed" );

//FileClient_1.write
  FileClient_1.write();
}
```

The Delete Operation

To perform a delete operation on a table

- 1 Execute the **delete()** method.
- 2 Move to the row that you want to delete.
- 3 Delete the row by calling **deleteRow()**.

In this example DELETE an employee.

```
//DB_EMPLOYEE.delete("EMP_NO = '".concat(EMP_NO).concat("'"))
  Table_OTD_1.getDB_EMPLOYEE().delete( "EMP_NO = '".concat(
  employeedb_with_top_db_employee_1.getEMP_NO() ).concat( "' " ) );
}
```

5.5.2 The Stored Procedure

A Stored Procedure OTD represents a database stored procedure. Fields correspond to the arguments of a stored procedure while methods are the operations that you can apply to the OTD. It allows you to execute a stored procedure. Remember that while in the Collaboration Editor you can drag and drop nodes from the OTD into the Collaboration Editor.

Executing Stored Procedures

The OTD represents the Stored Procedure “LookUpGlobal” with two parameters, an inbound parameter (INLOCALID) and an outbound parameter (OUTGLOBALPRODUCTID). These inbound and outbound parameters are generated by the DataBase Wizard and are represented in the resulting OTD as nodes. Within the Transformation Designer, you can drag values from the input parameters, execute the call, collect data, and drag the values to the output parameters.

Below are the steps for executing the Stored Procedure:

- 1 Specify the input values.
- 2 Execute the Stored Procedure.
- 3 Retrieve the output parameters if any.

For example:

```
package Storedprocedure;

public class sp_jce
{
    public com.stc.codegen.logger.Logger logger;

    public com.stc.codegen.alerter.Alerter alerter;

    public void receive(
com.stc.connector.appconn.file.FileTextMessage
input, com.stc.connector.appconn.file.FileApplication
FileClient_1, employeedb.Db_employee
employeedb_with_top_db_employee_1, insert_DB.Insert_DBOTD insert_DB_1
)
    throws Throwable
    {
        //@map:employeedb_with_top_db_employee_1.unmarshalFromString(Text)
        employeedb_with_top_db_employee_1.unmarshalFromString(
input.getText() );

        //@map:Copy java.lang.Integer.parseInt(Employee_no) to
Employee_no
        insert_DB_1.getInsert_new_employee().setEmployee_no(
java.lang.Integer.parseInt(
employeedb_with_top_db_employee_1.getEmployee_no() ) );

        //@map:Copy Employee_lname to Employee_Lname
        insert_DB_1.getInsert_new_employee().setEmployee_Lname(
employeedb_with_top_db_employee_1.getEmployee_lname() );

        //@map:Copy Employee_fname to Employee_Fname
        insert_DB_1.getInsert_new_employee().setEmployee_Fname(
employeedb_with_top_db_employee_1.getEmployee_fname() );

        //@map:Copy java.lang.Float.parseFloat(Rate) to Rate
        insert_DB_1.getInsert_new_employee().setRate(
java.lang.Float.parseFloat(
employeedb_with_top_db_employee_1.getRate() ) );

        //@map:Copy java.sql.Timestamp.valueOf(Update_date) to
Update_date
```

```
        insert_DB_1.getInsert_new_employee().setUpdate_date(  
java.sql.Timestamp.valueOf(  
employeeedb_with_top_db_employee_1.getUpdate_date() ) );  
  
        //@map:Insert_new_employee.execute  
insert_DB_1.getInsert_new_employee().execute();  
  
        //@map:insert_DB_1.commit  
insert_DB_1.commit();  
  
        //@map:Copy "procedure executed" to Text  
FileClient_1.setText( "procedure executed" );  
  
        //@map:FileClient_1.write  
FileClient_1.write();  
    }  
}
```

5.6 Alerting and Logging

eGate provides an alerting and logging feature. This allows monitoring of messages and captures any adverse messages in order of severity based on configured severity level and higher. To enable Logging, please see the *eGate Integrator User's Guide*.

Index

A

Add Prepared Statements 28

C

class parameter

 Data Source settings 17

ClassName 11

configuration parameters

 class 17

configuring e*Way connections 10

Configuring the e*Way

 creating 10

Connect to Database 22

D

DatabaseName 14

Delimiter 14, 19

Description 11, 14, 19

driver class, JDBC 11, 17

DriverProperties 15, 19

E

Environment Properties

 DatabaseName 14

 Delimiter 14, 19

 Description 14, 19

 DriverProperties 15, 19

 Password 15, 20

 PortNumber 15, 20

 ServerName 15, 20

 User 16, 20

eWay Database Wizard 21

I

InitialPoolSize 12

J

JDBC

 driver class 11, 17

L

LoginTimeout 12

M

MaxIdleTime 12

MaxPoolSize 12

MaxStatements 12

MinPoolSize 13

N

NetworkProtocol 13

O

Outbound Properties

 ClassName 11

 Description 11

 InitialPoolSize 12

 LoginTimeout 12

 MaxIdleTime 12

 MaxPoolSize 12

 MaxStatements 12

 MinPoolSize 13

 NetworkProtocol 13

 PropertyCycle 13

 RoleName 13

P

Password 15, 20

PortNumber 15, 20

Property settings, Environment

 DatabaseName 14

 Delimiter 14, 19

 Description 14, 19

 DriverProperties 15, 19

 Password 15, 20

 PortNumber 15, 20

 ServerName 15, 20

 User 16, 20

Property settings, Outbound

 ClassName 11

 Description 11

 InitialPoolSize 12

 LoginTimeout 12

 MaxIdleTime 12

 MaxPoolSize 12

 MaxStatements 12

 MinPoolSize 13

 NetworkProtocol 13

 PropertyCycle 13

Index

RoleName 13
PropertyCycle 13

R

RoleName 13

S

Select Database Objects 22
Select Procedures 27
Select Table/Views 23
Select Wizard Type 21
ServerName 15, 20
Specify the OTD Name 30
System Requirements 7

U

User 16, 20