

SeeBeyond ICAN Suite

VSAM eWay Intelligent Adapter User's Guide

Release 5.0.3



The information contained in this document is subject to change and is updated periodically to reflect changes to the applicable software. Although every effort has been made to ensure the accuracy of this document, SeeBeyond Technology Corporation (SeeBeyond) assumes no responsibility for any errors that may appear herein. The software described in this document is furnished under a License Agreement and may be used or copied only in accordance with the terms of such License Agreement. Printing, copying, or reproducing this document in any fashion is prohibited except in accordance with the License Agreement. The contents of this document are designated as being confidential and proprietary; are considered to be trade secrets of SeeBeyond; and may be used only in accordance with the License Agreement, as protected and enforceable by law. SeeBeyond assumes no responsibility for the use or reliability of its software on platforms that are not supported by SeeBeyond.

SeeBeyond, e*Gate, and e*Way are the registered trademarks of SeeBeyond Technology Corporation in the United States and select foreign countries; the SeeBeyond logo, e*Insight, and e*Xchange are trademarks of SeeBeyond Technology Corporation. The absence of a trademark from this list does not constitute a waiver of SeeBeyond Technology Corporation's intellectual property rights concerning that trademark. This document may contain references to other company, brand, and product names. These company, brand, and product names are used herein for identification purposes only and may be the trademarks of their respective owners.

© 2003-2004 by SeeBeyond Technology Corporation. All Rights Reserved. This work is protected as an unpublished work under the copyright laws.

This work is confidential and proprietary information of SeeBeyond and must be maintained in strict confidence.

Version 20040429151156.

Contents

Chapter 1

Introducing the VSAM eWay	6
Overview	6
VSAM System	6
VSAM eWay	7
Supported Operating Systems	7
System Requirements	7
External System Requirements	8

Chapter 2

Installing the VSAM eWay	9
Complete Installation: Overview	9
Installing eXadas DataMapper	10
eWay Installation Procedures	11
Before installing the eWay	11
Installing the VSAM eWay on an eGate-supported system	11
After Installation	12

Chapter 3

Setting VSAM eWay Properties	13
VSAM eWay Properties Sheet	13
Setting eWay Properties on the Connectivity Map	15
Setting the Properties in the CP (Outbound) eWay	15
ClassName	16
Description	17
InitialPoolSize	17
LoginTimeout	17
MaxIdleTime	17
MaxPoolSize	17
MaxStatements	18
MinPoolSize	18
NetworkProtocol	18

PropertyCycle	18
RoleName	18
Setting the Properties in the Inbound eWay	19
Pollmilliseconds	19
PreparedStatement	20
Setting Properties on the Project Environment	20
Setting the Properties in the CP (Outbound) eWay	20
DatabaseName	21
DataSourceName	21
Delimiter	22
Description	22
DriverProperties	22
Password	22
PortNumber	23
ServerName	23
User	23
Setting the Properties in the Inbound eWay	23
DatabaseName	24
Password	24
PortNumber	25
ServerName	25
User	25

Chapter 4

Using the VSAM Database Wizard	26
Overview	26
Wizard Procedures	26
Generated OTDs	27
Creating a VSAM OTD	27
Resulting OTD	41

Chapter 5

Reviewing the Sample Projects	43
eGate Project Description	43
Projects and the Enterprise Designer	44
Importing Sample Projects	44
Basic eWay Components	45
VSAM eWay Properties	45
VSAM OTDs	45
Overview: Sample Projects	46
Project Components	46
Project Operation	47
Input and Output Data	47
Summary: Sample Business Process Project	47
Using the eWay With eInsight	47

Using eInsight With eGate Components	48
VSAM eWay With eInsight	48
Using a Business Process	49
Configuring the Modeling Elements	50
Copying the Output File	50
Returning the Value	51
Completing the Project	52
Summary: Sample Collaboration (Java) Project	52
Creating Collaboration Definitions	52
Using the Collaboration Editor (Java)	52
Completing the Project	53
Creating the Project's Environment	54
Setting eWay Properties	54
Deploying a Project	55
Basic Steps	55
Alerting and Logging	56

Chapter 6

Using VSAM OTDs	57
Overview	57
Using Tables	57
Using the select Method	58
Select Operations	60
Insert Operations	62
Update Operations	65
Delete Operations	67
Using Views	68
Using Prepared Statements	69

Chapter 7

Using eWay Java Methods	74
VSAM eWay Methods and Classes: Overview	74
Relation to eWay Properties	74
VSAM eWay Javadoc	74
eWay Java Classes/Interfaces	75

Index	76
--------------	-----------

Introducing the VSAM eWay

This guide explains how to use and operate the SeeBeyond Technology Corporation's (SeeBeyond) VSAM eWay Intelligent Adapter (VSAM eWay).

This chapter provides a brief overview of operations, components, general features, and system requirements of the VSAM eWay.

Chapter Topics

- ["Overview" on page 6](#)
- ["Supported Operating Systems" on page 7](#)
- ["System Requirements" on page 7](#)
- ["External System Requirements" on page 8](#)

1.1 Overview

The VSAM eWay enables eGate Integrator to exchange data with an external IBM Virtual Storage Access Method (VSAM) mainframe file system. IBM uses a collection of three data-set organizations: sequential, indexed, and direct-access, together with the access methods and utilities used on mainframe operating systems. This collection of data-set organizations is called VSAM.

1.1.1 VSAM System

VSAM is one of several access methods that defines the technique by which data is stored and retrieved. It is a GET/PUT interface used to transfer data from a direct-access storage device (DASD) to an application program. VSAM does not support data stored on tape.

VSAM data sets must be cataloged in an integrated catalog facility (ICF) structure. Records are arranged by an index key or by relative byte addressing. VSAM uses direct or sequential processing of fixed and variable-length records stored on a DASD.

VSAM also provides the following features:

- Allows you to organize and access data (record management).
- Maintains information about this data, which is stored or referenced in a catalog (catalog management).
- Supports Entry-sequenced Data Set (ESDS) and Key-sequenced Data Set (KSDS) files.

The VSAM eWay allows you to utilize and extend all of these features. For more information on VSAM, see IBM's Web site.

1.1.2 VSAM eWay

This eWay is similar to other database eWays, such as IAM, ADABAS, and IDMS. The eWay uses its own properties settings and eGate components to enable VSAM data integration.

This eWay enables eGate to communicate with VSAM files on a mainframe host system via TCP/IP. The eWay utilizes a CrossAccess Corp. software component that allows you to view and access VSAM in the same way as a standard relational database system.

For details on operating and using eGate and its user interface, the Enterprise Designer, see the *eGate Integrator User's Guide*.

The VSAM eWay's properties settings provide the necessary parameters for the operation of the VSAM eWay. See [Chapter 3](#) for details on how to set the VSAM eWay properties.

1.2 Supported Operating Systems

The VSAM eWay is available for the following operating systems:

- Windows XP, Windows 2000, and Windows Server 2003
- HP-UX 11.0 and 11i (PA-RISC)
- IBM AIX 5.1L and 5.2
- Red Hat Linux 8 (Intel) and Linux Advanced Server 2.1 (Intel)
- Sun Solaris 8 and 9

1.3 System Requirements

To use the VSAM eWay, you need:

- eGate Logical Host.
- TCP/IP network connection.

Logical Host Requirements

The VSAM eWay Installation program installs the CrossAccess JDBC driver, version 3.0.

The eWay must have its properties set and be administered using the Enterprise Designer. For complete information on the Enterprise Designer system requirements, see the *SeeBeyond ICAN Suite Installation Guide*.

eInsight Interface

To enable the eWay's eInsight interface (see [Chapter 5](#) for details), you must also install and set properties for SeeBeyond's eInsight Business Process Manager. See the *eInsight Business Process Manager User's Guide* for details.

1.4 External System Requirements

This section lists the eWay's external system requirements.

Additional Windows Requirements

To enable eGate Enterprise Designer's editors to communicate with the VSAM file system, the following CrossAccess items must be installed on any host machines running the editors:

- CrossAccess version 3.0, including:
 - ♦ eXadas DataMapper
 - ♦ JDBC driver (installed with the eWay)

Note: *The eXadas Data Mapper is shipped with the eWay, but you must install it separately.*

For more information, including installation procedure and serial numbers, see [Chapter 2](#).

Additional UNIX Requirements

If you are installing the VSAM eWay on a UNIX system, you need:

- CrossAccess JDBC driver, version 3.0 (installed with the eWay)

z/OS External Requirements

- CrossAccess eXadas Data Integrator, version 3.0, installed via a 3480 cartridge tape
- The serial number for the installation, shipped with the tape

Note: *The eXadas Data Integrator is shipped with the eWay, but you must install it separately.*

All of these eXadas software products are also available from the CrossAccess Corp. For more information, you can visit the company's Web site at:

www.crossaccess.com

Installing the VSAM eWay

This chapter explains how to install the VSAM eWay.

Chapter Topics

- “Complete Installation: Overview” on page 9
- “Installing eXadas DataMapper” on page 10
- “eWay Installation Procedures” on page 11
- “After Installation” on page 12

Note: See the *SeeBeyond ICAN Suite Installation Guide* for complete eGate installation instructions.

2.1 Complete Installation: Overview

This section provides a brief overview of the eWay’s installation components and the order of their installation.

Note: *The CrossAccess eXadas Data Integrator and eXadas DataMapper are shipped with the eWay, but you must install them separately.*

You must install the VSAM eWay and its components in the following order:

- 1 eXadas Data Integrator
- 2 eXadas DataMapper
- 3 VSAM eWay

Note: *Once the installation operation is complete, you may want to pass a small amount of data to ensure you have a working connection.*

Installing eXadas Data Integrator

For complete details on how to install eXadas Data Integrator on the mainframe, see the *CrossAccess eXadas Data Integrator Getting Started* manual, the chapter that details mainframe installation. All eXadas software products, as well as additional information on each product, are available from the CrossAccess Corp.

For more information on CrossAccess, you can visit their Web site.

Important: When you install eXadas Data Integrator, be sure to set properties for it for VSAM. See the appropriate CrossAccess documentation for details.

2.2 Installing eXadas DataMapper

This section describes installing eXadas DataMapper for Windows systems.

To install eXadas DataMapper

- 1 After you have installed the eWay, as explained under **“eWay Installation Procedures” on page 11**, insert the CD-ROM provided for installing the eXadas DataMapper.

The installation process automatically begins, and the **Welcome** dialog box appears.

- 2 Click **Next**.

The **eXadas DataMapper Registration** dialog box appears.

- 3 Using this dialog box, register the eXadas DataMapper. In the appropriate text box, you must enter the following serial number:

ex58dw43

- 4 Click **Next**.

- 5 A dialog box appears asking you to confirm the information you just entered. Click **Yes**.

- 6 Follow the instructions on each wizard dialog box to complete the installation. When you are done with the final wizard, click **Finish** to complete the installation.

The installation program returns you to the process explained under **“eWay Installation Procedures” on page 11**.

The eXadas DataMapper installation has the following optional sets of files:

- **Program Files:** The executable files and run-time system for running DataMapper.
- **Help Files:** Make up the online Help system for DataMapper.
- **Sample Files:** Including sample COBOL Copybooks and IMS/DL/I DBDs and IDMS schemes and sub-schemas for testing DataMapper’s features. CrossAccess recommends installing all three sets of files. The minimum requirement is installing the program files in option 1.

When installation is complete, a program group named eXadas is created in Windows. The group contains the program items for DataMapper, the DataMapper Help system, and the DataMapper **Readme.txt** file. To start DataMapper, double-click the mouse on the DataMapper icon in the eXadas program group.

Refer to the eXadas DataMapper documentation located on the eGate installation CD-ROM for further instructions.

2.3 eWay Installation Procedures

During the ICAN Suite installation process, the Enterprise Manager, a Web-based application, is used to select and upload eWay and add-on files (.sar files) from the ICAN installation CD-ROM to the Repository.

When the Repository is running on a UNIX operating system, eWays are loaded using the Enterprise Manager on a Windows computer connected to the Repository server, using Internet Explorer.

Before installing the eWay

Open and review the **Readme.txt** file (located in the root directory of the ICAN installation's Repository CD-ROM) for the latest information, before installing the eWay.

Installing the VSAM eWay on an eGate-supported system

The VSAM eWay can be installed during the installation of eGate. The eGate installation process includes the following operations:

- Installing the eGate Repository
- Uploading products to the Repository
- Downloading the components (including the eGate Enterprise Designer and the Logical Host)
- Viewing the product information home pages

Follow the instructions for installing the ICAN Suite found in the *SeeBeyond ICAN Suite Installation Guide*, and include the following steps:

- 1 After the eGate or eInsight core products are uploaded to the Repository using the Enterprise Manager, select and upload the **FileeWay.sar**. The File eWay is used by the eWay's Project sample. You must upload the File eWay (**FileeWay.sar**) before uploading the VSAM eWay (**VSAMeWay.sar**).
- 2 After the File eWay is uploaded, upload **VSAMeWay.sar** to install the VSAM eWay.
- 3 Next, upload the **VSAMeWayDocs.sar**. This file contains the eWay user's guide, **Javadoc**, and sample Project file.
To obtain these files, follow the instructions provided by the user interface.
- 4 If needed, continue installing eGate as instructed in the *SeeBeyond ICAN Suite Installation Guide*.

2.4 After Installation

Once the eWay is installed and configured, it must then be incorporated into a Project before it can perform its intended functions. See the *eGate Integrator User's Guide* for more information on incorporating the eWay into an eGate Project.

Setting VSAM eWay Properties

This chapter explains how to set the properties for the VSAM eWay.

Chapter Topics

- “VSAM eWay Properties Sheet” on page 13
- “Setting eWay Properties on the Connectivity Map” on page 15
- “Setting Properties on the Project Environment” on page 20

3.1 VSAM eWay Properties Sheet

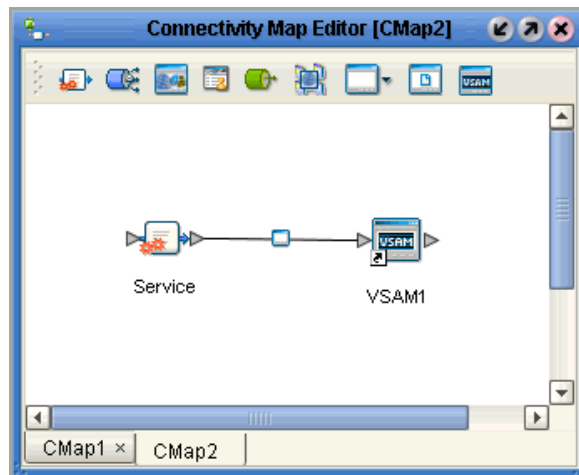
When you install the VSAM eWay, a default properties template for the eWay is also installed. These default settings apply to all VSAM eWays you use within your current Project or Business Process.

You can set properties for each individual eWay using the Enterprise Designer’s eWay **Properties** sheet. This section describes general procedures on how to change the default properties for the eWay. For details on these steps, see the *eGate Integrator User’s Guide*.

To set properties for the VSAM eWay on the Connectivity Map

- 1 From the eGate Enterprise Designer’s **Project Explorer** create at least one Connectivity Map.
- 2 Create the desired external systems for your one or more Connectivity Maps.
- 3 Select the external application whose default eWay properties you want to change by clicking the **eWay** icon. This icon is located on the link between an **External Application** icon and a **Service** icon on the Connectivity Map canvas. See **Figure 1 on page 14**.

Figure 1 eWay Icon



- 4 Select whether you want the Inbound or Connection Point (CP) eWay properties on the pop-up dialog box.

The eWay **Properties** sheet appears. [Figure 2 on page 16](#) shows the CP (outbound) eWay's default properties available on the **Project Explorer** and Connectivity Map. You can use this window to modify the current eWay's properties settings.

[Figure 3 on page 19](#) shows the Inbound eWay's default properties.

- 5 Click **OK** then **Save All** to save your changes.

To set properties for the VSAM eWay on the Project Environment

- 1 From the Enterprise Designer, create your external systems.
- 2 Click the **Environment Explorer** tab (at the bottom of the left pane).
- 3 Create an environment for your project, then create external systems on the Environment canvas to correspond to the systems you created using the **Project Explorer**.
- 4 Enter a name for the new external system and select whether you want the Inbound or Connection Point (CP) eWay properties on the dialog box.
- 5 Select the external system whose default eWay properties you want to change by right-clicking the desired system's icon in the **Environment Explorer**.

The eWay **Properties** sheet appears. [Figure 4 on page 21](#) shows the CP (outbound) eWay's default properties available on the **Environment Explorer**. You can use this dialog box to modify the eWay properties associated with the current external system.

[Figure 5 on page 24](#) shows the Inbound eWay's default properties.

- 6 Click **OK** then **Save All** to save your changes.

To use the eWay Properties sheet

- The default properties are automatically provided. You can change the defaults, as desired.
- Clicking the **Configuration** (Connectivity Map) or **Environment Configuration** folder in the left pane displays the properties group subfolder in the right pane. Click any subfolder to display the eWay's editable properties.
- Many of the entries allow you to enter text. Click the desired text box, then click the ellipsis (...) that appears, to open a dialog box for this purpose.

Note: *Even if you do not change the eWay's properties, you must open the **Properties** sheet for the eWay and click **OK** to activate the eWay.*

The rest of this chapter explains all of the eWay's properties in detail, under the following sections:

- ["Setting eWay Properties on the Connectivity Map" on page 15](#)
- ["Setting Properties on the Project Environment" on page 20](#)

3.2 Setting eWay Properties on the Connectivity Map

This section explains in detail the eWay's editable properties accessible on the Connectivity Map via the eGate Enterprise Designer's **Project Explorer**. You can set these properties using the eWay **Properties** sheet.

3.2.1. Setting the Properties in the CP (Outbound) eWay

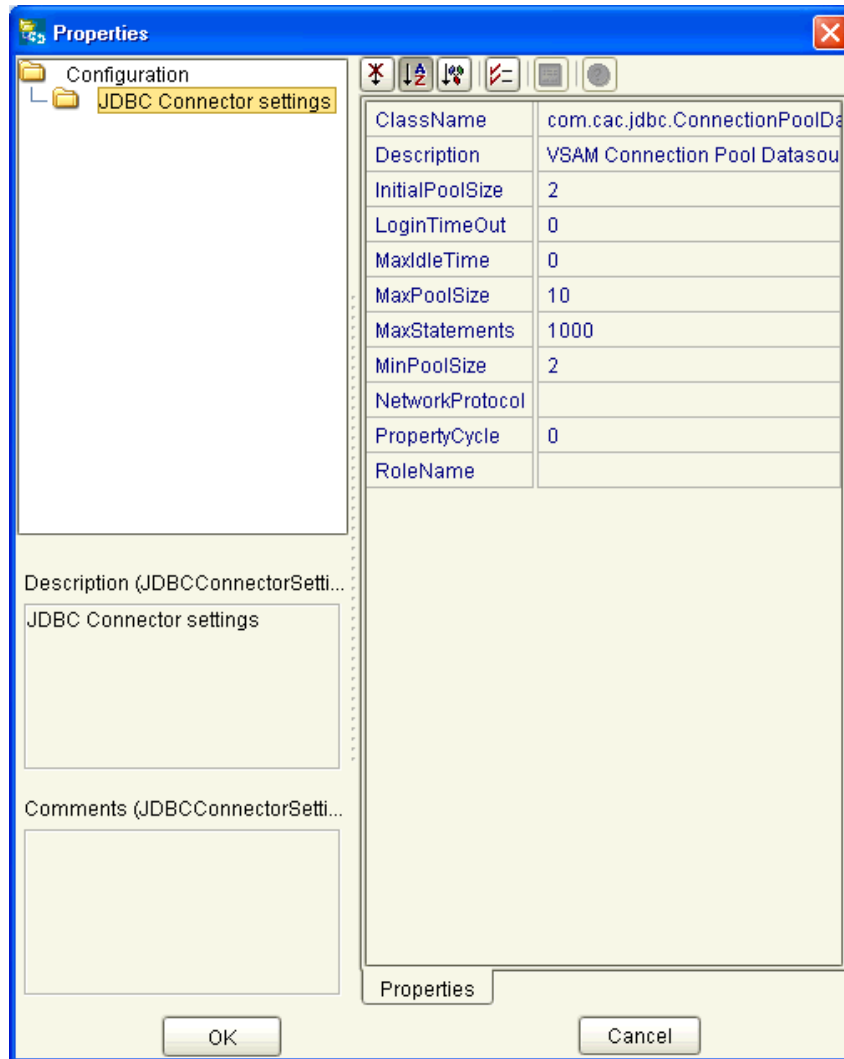
These settings define the properties used to interact with the external database. See [Figure 2 on page 16](#).

The eWay's properties settings define the properties used to interact with the external database, under the **JDBC Connector settings** folder. These settings are:

- ["ClassName" on page 16](#)
- ["Description" on page 17](#)
- ["InitialPoolSize" on page 17](#)
- ["LoginTimeOut" on page 17](#)
- ["MaxIdleTime" on page 17](#)
- ["MaxPoolSize" on page 17](#)
- ["MaxStatements" on page 18](#)

- “MinPoolSize” on page 18
- “NetworkProtocol” on page 18
- “PropertyCycle” on page 18
- “RoleName” on page 18

Figure 2 eWay Properties Sheet: CP (Outbound) Settings on the Connectivity Map



ClassName

Description

Specifies the Java class in the JDBC driver, which is used to implement the **ConnectionPoolDataSource** interface.

Required Values

A valid class name.

The default is **VSAM.jdbc.pool.VSAMConnectionPoolDataSource**.

Description

Description

Enter a description for the current database.

Required Values

A valid string. The default is **VSAM Connection Pool Datasource**.

InitialPoolSize

Description

Enter a number for the physical connections the pool must contain when it is created.

Required Values

A valid numeric value.

LoginTimeout

Description

Specifies the number of seconds the driver waits before attempting to log on to the database before timing out.

Required Values

A valid numeric value.

MaxIdleTime

Description

Specifies the maximum number of seconds that a physical connection can remain unused before it is closed. A 0 (zero) indicates there is no limit.

Required Values

A valid numeric value.

MaxPoolSize

Description

Specifies the maximum number of physical connections the pool must keep available at all times. A 0 (zero) indicates there is no maximum.

Required Values

A valid numeric value.

MaxStatements

Description

Specifies the maximum total number of statements the pool must keep open. A 0 (zero) indicates the caching of statements is disabled.

Required Values

A valid numeric value.

MinPoolSize

Description

Specifies the minimum number of physical connections the pool must keep available at all times. A 0 (zero) indicates there are no physical connections in the pool, and the new connections are created as needed.

Required Values

A valid numeric value.

NetworkProtocol

Description

Specifies the network protocol used to communicate with the server.

Required Values

Any valid string.

PropertyCycle

Description

Specifies the interval, in seconds, which the pool waits before enforcing the current policy defined by the values of the other connection pool properties specified in the eWay's properties.

Required Values

A valid numeric value.

RoleName

Description

Enter an initial SQL role name.

Required Values

Any valid string.

3.2.2. Setting the Properties in the Inbound eWay

This section explains how to set properties for the inbound VSAM eWay. See Figure 3.

These settings under the **Configuration** folder are:

- “Pollmilliseconds” on page 19
- “PreparedStatement” on page 20

Figure 3 eWay Properties Sheet: Inbound Settings on the Connectivity Map



Pollmilliseconds

Description

Polling interval in milliseconds.

Required Values

A valid numeric value. The default is **5000**.

PreparedStatement

Description

The PreparedStatement used for polling against the database.

Required Values

The PreparedStatement must be the same PreparedStatement you created using the Database OTD Wizard. Only a SELECT Statement is allowed. Additionally, no place holders can be specified. Do not use “?” in the Prepared Query.

3.3 Setting Properties on the Project Environment

This section explains in detail the eWay’s editable properties accessible via the eGate Enterprise Designer’s **Environment Explorer**.

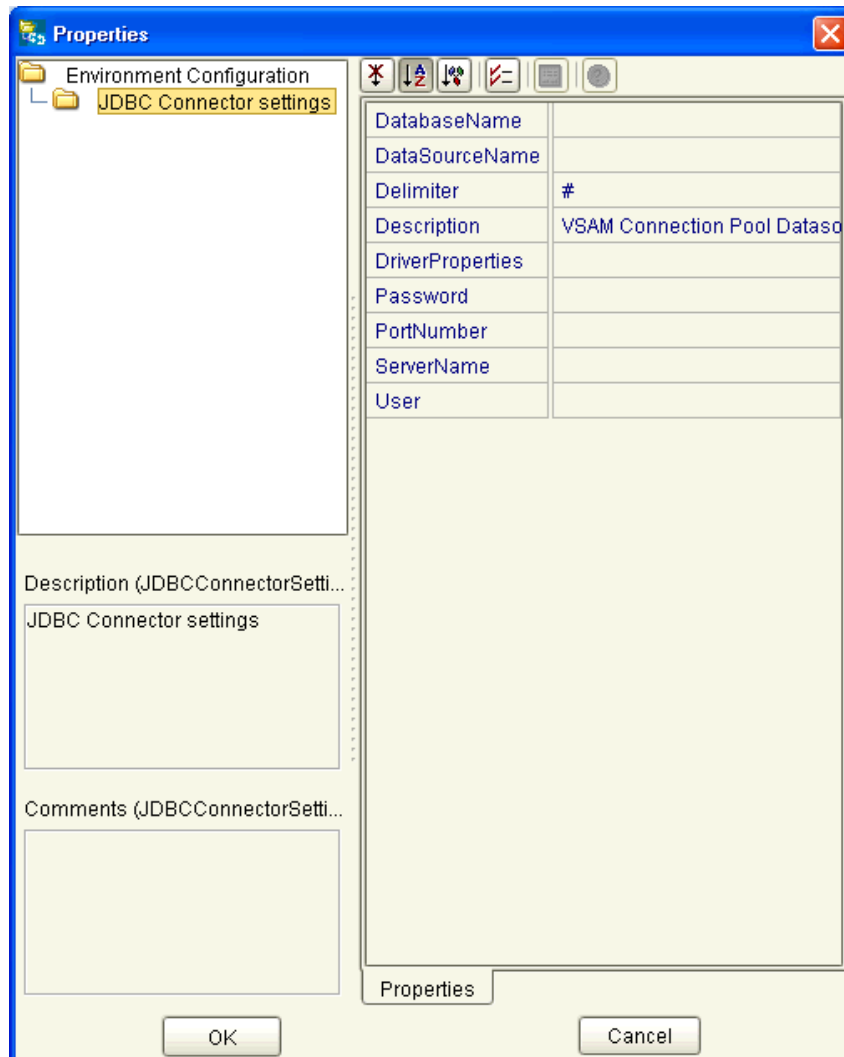
3.3.1. Setting the Properties in the CP (Outbound) eWay

You can set these properties using the eWay **Properties** sheet. See [Figure 4 on page 21](#).

The eWay’s properties, under the **JDBC Connector settings** folder, in the **Environment Explorer** are:

- [“DatabaseName” on page 21](#)
- [“DataSourceName” on page 21](#)
- [“Delimiter” on page 22](#)
- [“Description” on page 22](#)
- [“Password” on page 22](#)
- [“PortNumber” on page 23](#)
- [“ServerName” on page 23](#)
- [“User” on page 23](#)

Figure 4 eWay Properties Sheet: CP (Outbound) Settings on the Project Environment



DatabaseName

Description

Specifies the name of the database instance.

Required Values

Any valid string.

DataSourceName

Description

Provide the name of the **ConnectionPoolDataSource** object that the **DataSource** object delegates behind the scenes when connection pooling or distributed transaction management is being done.

Required Values

Optional. In most cases, leave this box empty.

Delimiter

Description

Specifies the delimiter character to be used in the **DriverProperties** prompt.

Required Value

The default is #.

Description

Description

Enter a description for the current database.

Required Values

A valid string. The default is **VSAM Connection Pool Datasource**.

DriverProperties

Description

Allows you to enter the properties of the driver you are using; this property is optional. You can also use this property to change some driver parameters “on the fly” such as turning on a driver trace (a description box that identifies a driver).

Required Values

Any valid delimiter and/or method as follows:

- **Delimiter:** Valid delimiters are:

```
"<method-name-1>#<param-1>#<param-2>##.....<param-n>##<method-name-2>#<param-1>#<param-2>#.....<param-n>##.....##"
```

- **Method:** For example: to execute the method **setURL()**, give the following method a string for the URL:

```
"setURL#<url>##"
```

Password

Description

Specifies the password the eWay must use to access the database.

Required Values

Any valid string.

PortNumber

Description

Specifies the input-output port number on which the server is listening for connection requests.

Required Values

A valid port number; there is no default.

ServerName

Description

Specifies the host name of the external database server.

Required Values

Any valid string.

User

Description

Specifies the user name the eWay must use to access the database.

Required Values

Any valid string.

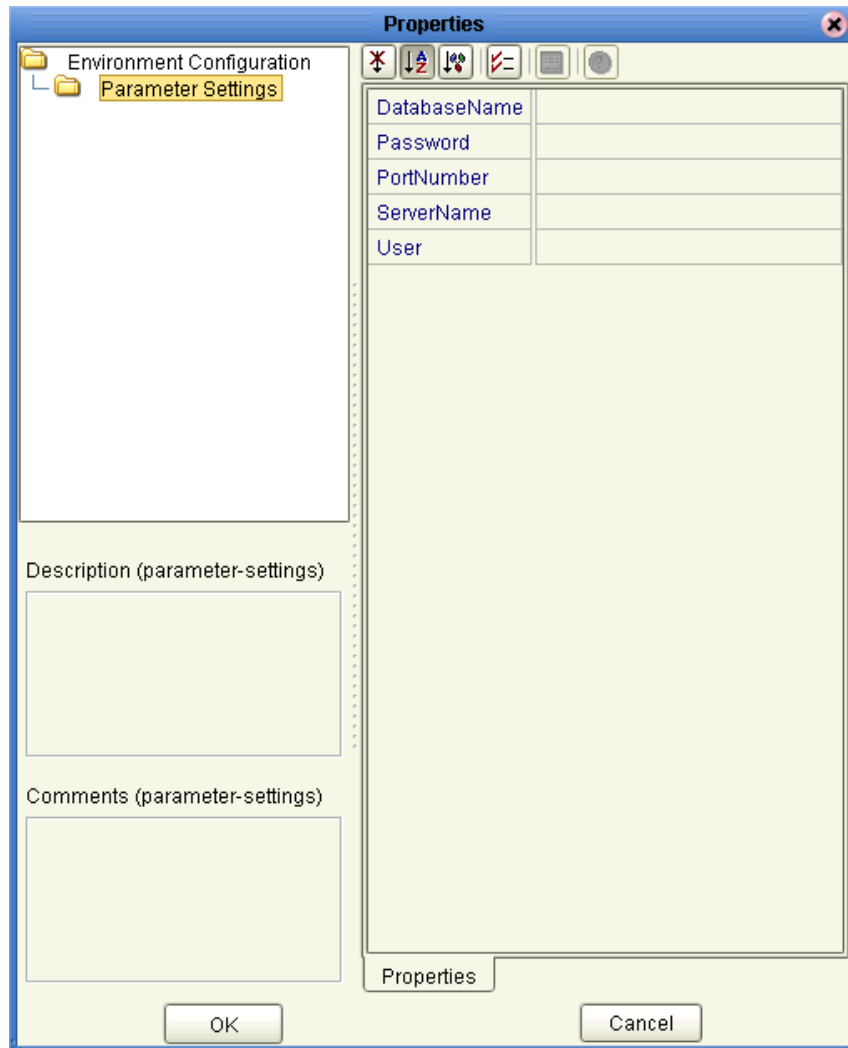
3.3.2. Setting the Properties in the Inbound eWay

You can set these properties using the eWay **Properties** sheet. See [Figure 5 on page 24](#).

The eWay's properties, under the **Environment Configuration** folder, in the **Environment Explorer** are:

- ["DatabaseName" on page 24](#)
- ["Password" on page 24](#)
- ["PortNumber" on page 25](#)
- ["ServerName" on page 25](#)
- ["User" on page 25](#)

Figure 5 eWay Properties Sheet: Inbound Settings on the Project Environment



DatabaseName

Description

Specifies the name of the database instance.

Required Values

Any valid string.

Password

Description

Specifies the password used to access the database.

Required Values

Any valid string.

PortNumber

Description

Specifies the input-output port number on which the server is listening for connection requests.

Required Values

A valid port number. The default is **1433**.

ServerName

Description

Specifies the host name of the external database server.

Required Values

Any valid string.

User

Description

Specifies the user name the eWay uses to connect to the database.

Required Values

Any valid string.

Using the VSAM Database Wizard

This chapter describes how to use the VSAM Database wizard to create VSAM Object Type Definitions (OTDs) in eGate.

Chapter Topics

- [“Overview” on page 26](#)
- [“Wizard Procedures” on page 26](#)
- [“Resulting OTD” on page 41](#)

4.1 Overview

You can use the eGate Enterprise Designer’s VSAM Database wizard to generate an eGate OTD. For more information on Enterprise Designer features, see the *eGate Integrator User’s Guide*.

The VSAM Database wizard generates OTDs by connecting to an external VSAM file system as if it were connecting to a database and creating corresponding OTDs. The OTD builder can then create corresponding OTDs based on any combination of tables.

Field nodes are added to the OTD based on the tables in the external data source. Java method and property nodes are added to provide the appropriate JDBC functionality. For more information on these Java methods, refer to your JDBC developer’s reference.

4.2 Wizard Procedures

This section explains how to use the VSAM Database wizard to create VSAM OTDs.

4.2.1 Generated OTDs

The VSAM Database wizard can create OTDs for the VSAM eWay. These types of OTDs can also be combined with each other. The types of OTDs are:

- **Table:** Contains fields for each of the columns in the selected table, as well as the methods required to exchange data with an external data source.
- **View:** The same as a table, except for read-only purposes.
- **Prepared Statements:** Allow you to add prepared SQL statements to an OTD.

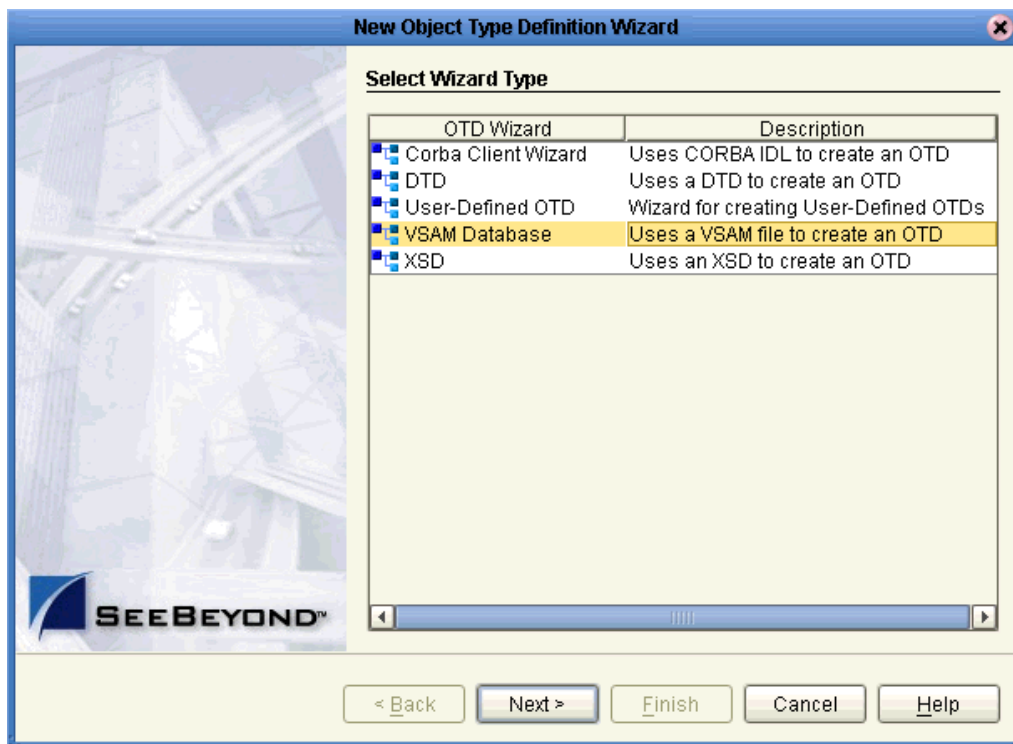
For more information on these types, see [Chapter 6](#).

4.2.2 Creating a VSAM OTD

To create a VSAM OTD using the wizard

- 1 From the eGate Enterprise Designer's **Enterprise Explorer** pane (**Project** tab), right-click on the desired **Project** folder and select **New** then **Create an Object Type Definition** from the pop-up menu.
- 2 The **OTD Wizard Selection** window appears, displaying all installed OTD wizards as shown in Figure 6.

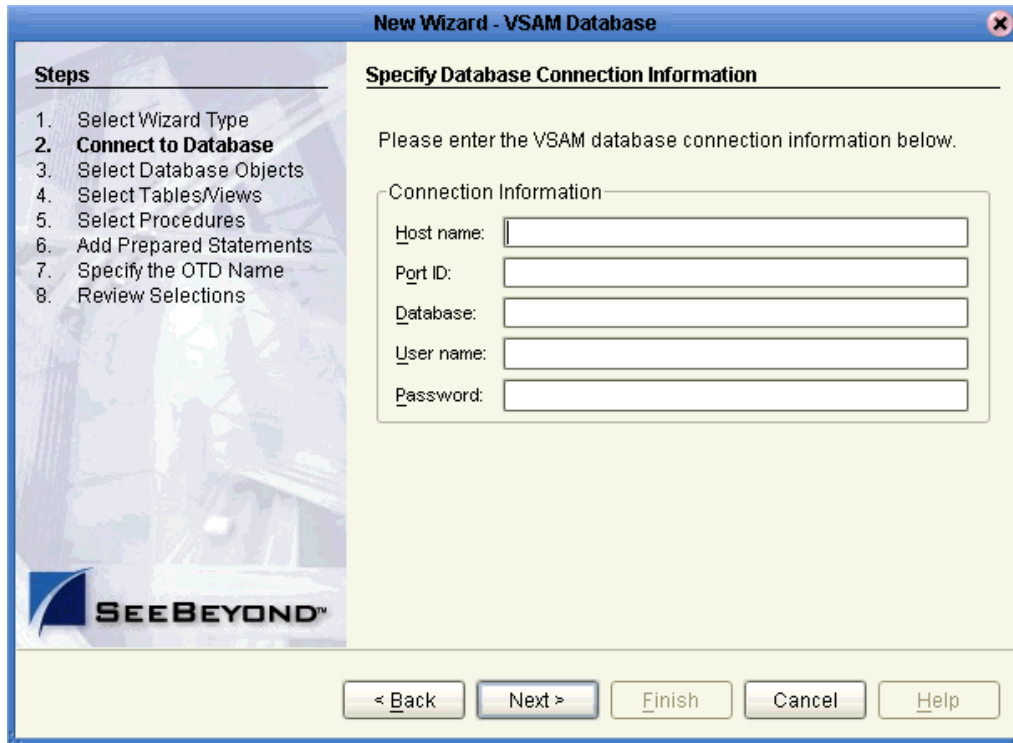
Figure 6 OTD Wizard Selection Window



- 3 From the list, select the **VSAM Database** OTD. Click **Next**.

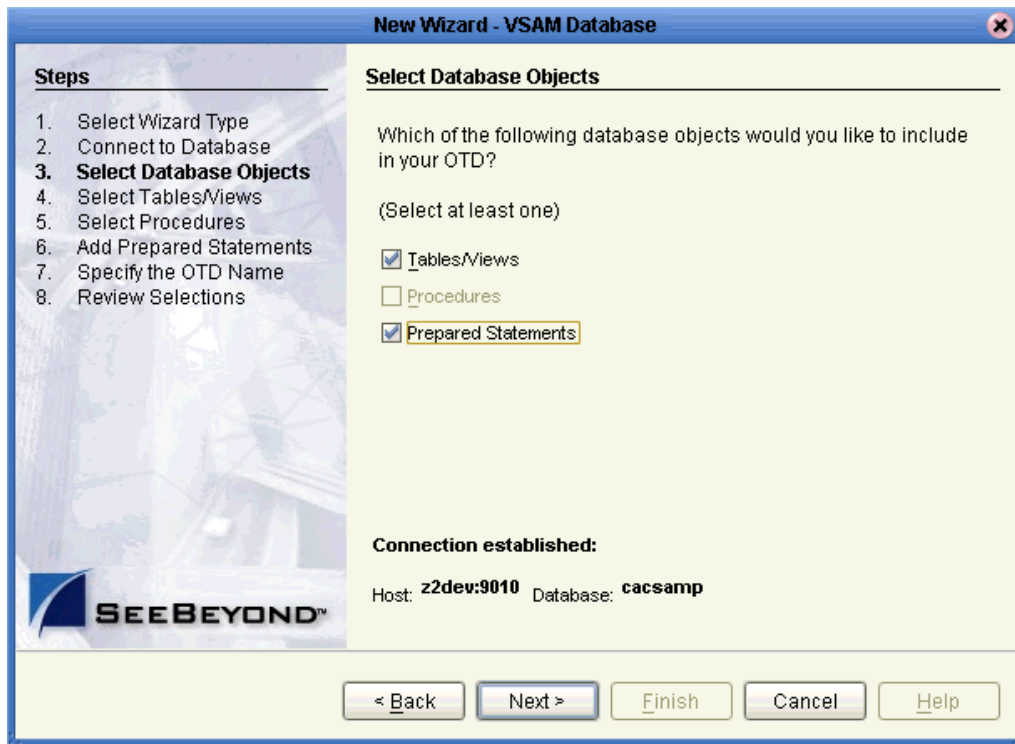
The **Specify Database Connection Information** window appears. See [Figure 7 on page 28](#).

Figure 7 Specify Database Connection Information Window



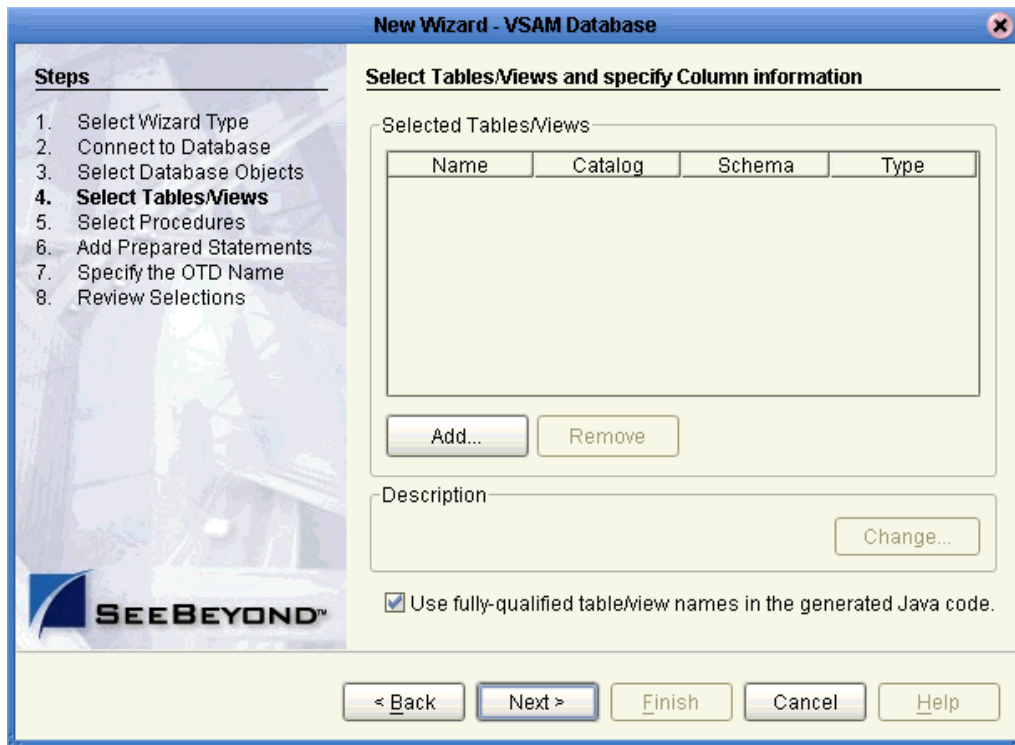
- 4 Specify the connection information for the current database as follows:
 - ◆ **Host name:** The name of the host you are connecting to.
 - ◆ **Port ID:** The host port number.
 - ◆ **Database:** The name of the database you are connecting to.
 - ◆ **User name:** Your user ID.
 - ◆ **Password:** Your password.
- 5 Click **Next**.
- 6 When the **Connection Status** line says you are connected to the database, click **Next** to continue.
- 7 In the **Select Database Objects** window, select **Tables/Views**. Click **Next** to continue. See Figure 8.

Figure 8 Select Database Objects Window



The Select Tables/Views window appears. See [Figure 9 on page 30](#).

Figure 9 Select Tables/Views Window



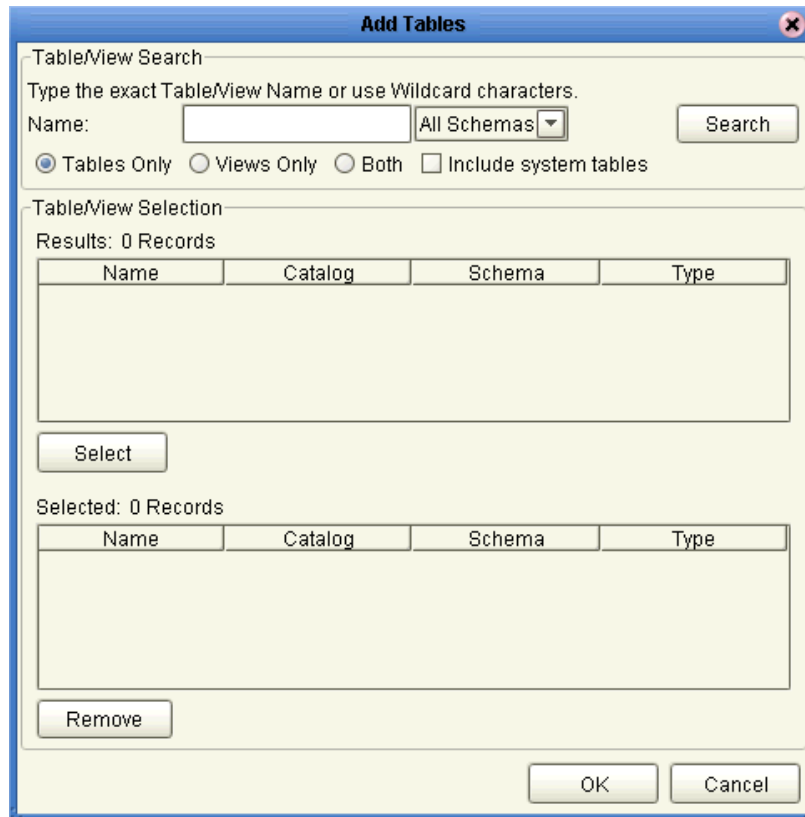
Note: You must select the *Use fully-qualified table/view names in the generated Java code* check box.

To select tables and views

- 1 Click **Add**.

The **Add Tables** window appears. See [Figure 10 on page 31](#).

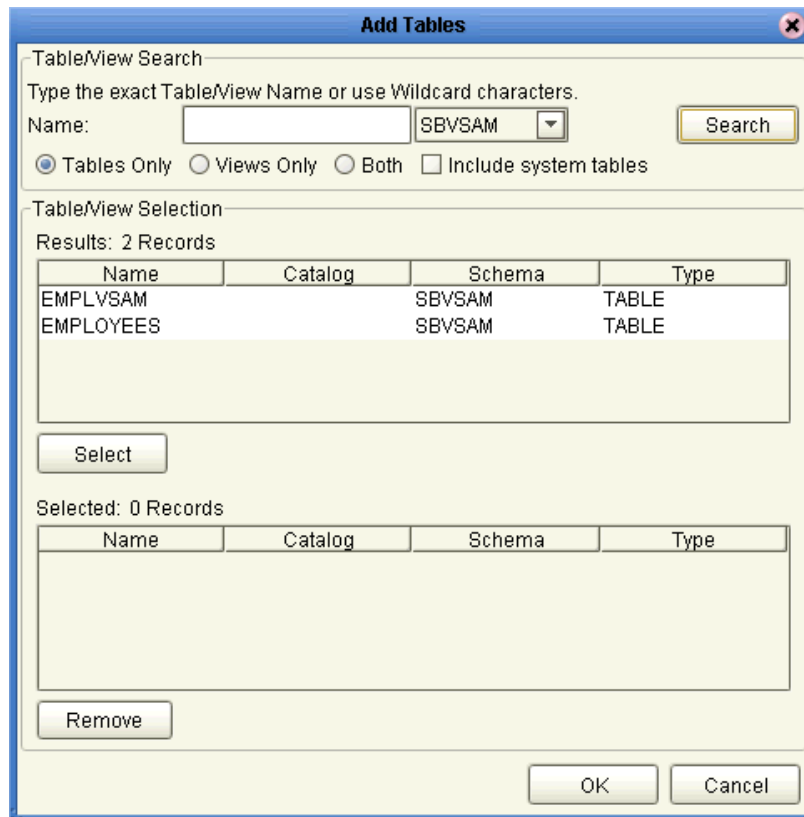
Figure 10 Add Tables Window: Beginning



Note: Views are read-only and for informational purposes only.

- 2 Select the schema you want to search in the **All Schemas** drop-down list and click **Search**. See [Figure 11 on page 32](#).

Figure 11 Add Tables Window: With Schemas



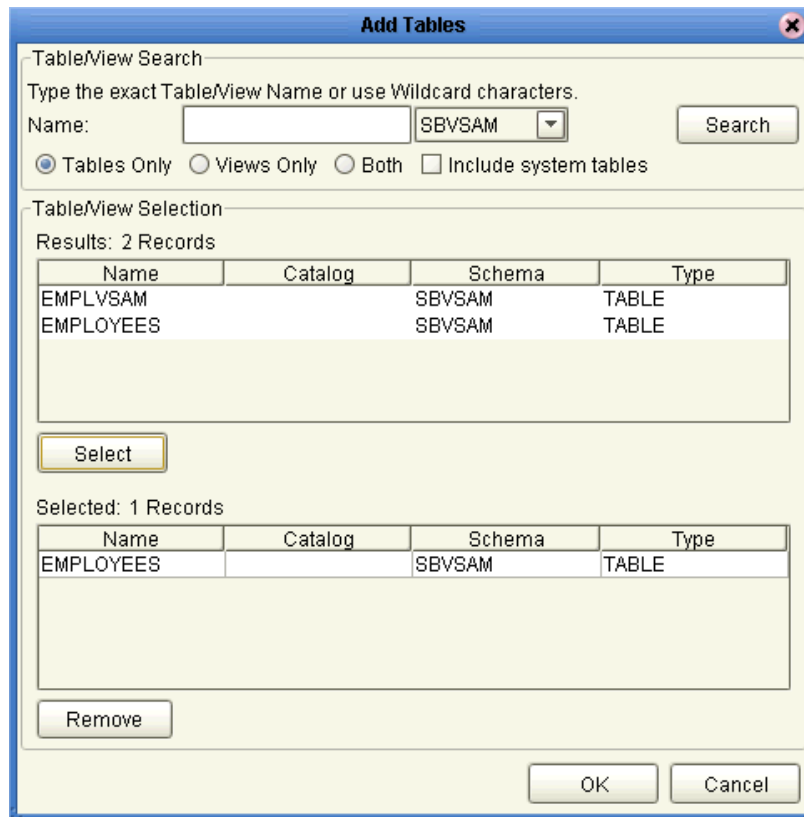
- 3 Select the desired table and click **Select**. You can also use adjacent or nonadjacent selections to select multiple table names.

Every name of the table or tables you have selected appear in the lower pane. See [Figure 12 on page 33](#).

You can click **Search** to find the desired table or tables.

You can use wildcard characters to search for a table or view. If desired, use the eWay wildcard characters “?”, “_”, and “*”. For example, you can use “AB?CD”, “AB_CD,” or “AB*CD”. However, do not use “%”. Using this character results in nothing being returned.

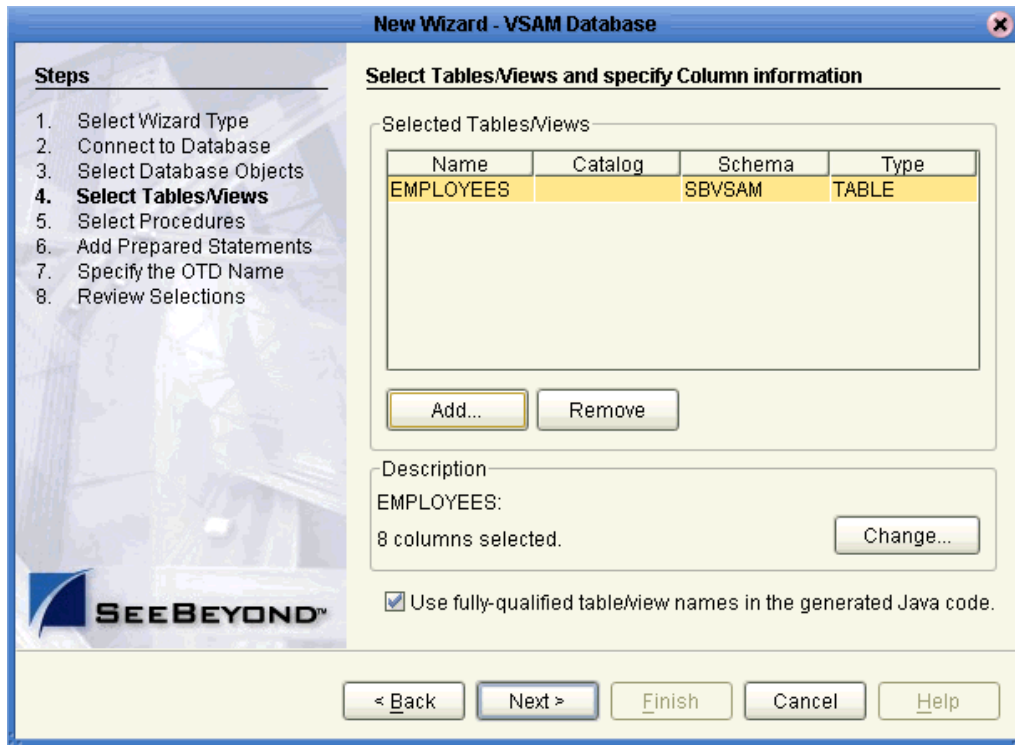
Figure 12 Add Tables Window: With Added Table



- 4 When you are finished, click **OK**.

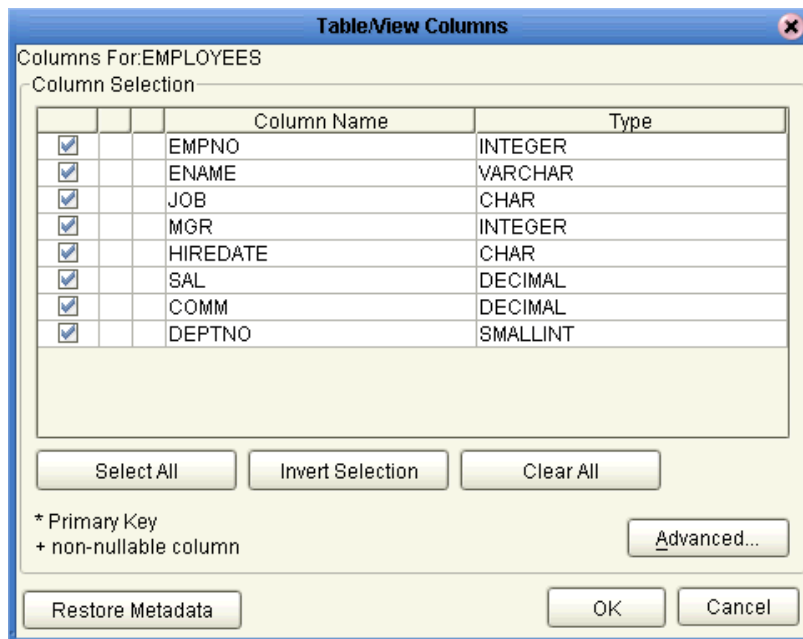
The **Select Tables/Views** window appears again, showing your one or more selected tables. See [Figure 13 on page 34](#). The figure shows one table selected, **EMPLOYEES**.

Figure 13 Select Tables/Views Window With Table



- 5 In the **Select Tables/Views** window, review the table or tables you have selected. You can make changes to the table columns, if desired, by clicking **Change** to open the **Table/View Columns** window.
See ["Using Tables" on page 57](#) for more information on how to use tables with the OTD.
- 6 If you click **Change** on the **Select Tables/Views** window, the **Table/View Columns** window appears. See [Figure 14 on page 35](#).

Figure 14 Table/View Columns Window



- 7 In the **Table/View Columns** window, you can select or deselect any table columns. You can also change the data type for each column by highlighting the data type and selecting a different data type from the drop-down list.

The buttons in this window operate as follows:

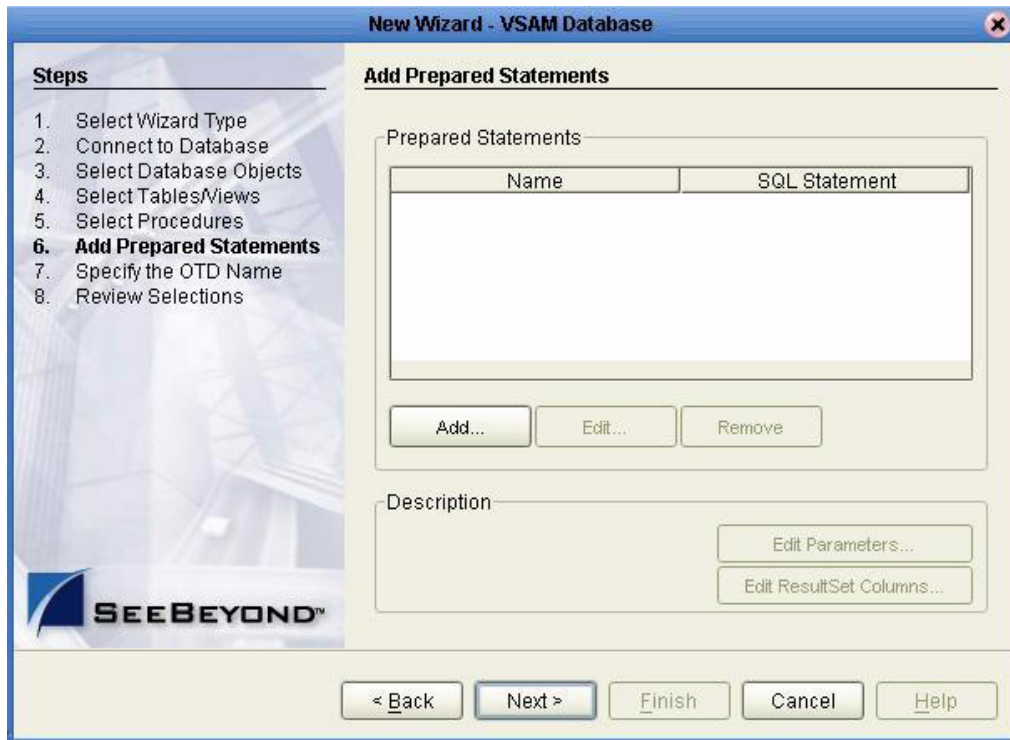
- ♦ **Select All:** Allows you to select all columns for inclusion in the OTD.
- ♦ **Invert Selection:** Allows you to invert the order of the selected columns.
- ♦ **Clear All:** Allows you to de-select all columns.
- ♦ **Advanced:** Opens a dialog box allowing you to change the current column properties of every column. You can edit the column's **SQL Type**, **Precision** or **Length**, and **Scale**.
- ♦ **Restore Metadata:** Allows you to restore the data to its original database state before you made any changes via the wizard.

When you are finished using this window, click **OK** to save your changes and return to the **Select Tables/Views** window.

- 8 When you are finished with the **Select Tables/Views** window (see [Figure 13 on page 34](#)), click **Next** to continue.

The **Add Prepared Statements** window appears. See [Figure 15 on page 36](#).

Figure 15 Add Prepared Statements Window



If you do not want to add any prepared statements, click **Next** to go to the next window in the wizard.

To add prepared statements

- 1 If you do want to add a prepared statement, click **Add** on the **Add Prepared Statements** window.

The **Add Prepared Statement** dialog box appears. See Figure 16.

Figure 16 Add Prepared Statement Dialog Box



- 2 Enter a name for your prepared statement.
- 3 Create an SQL statement by clicking in the **SQL Statement** pane and entering your statement, for example:

```
Select * from EMPLOYEES where ENAME like ?
```

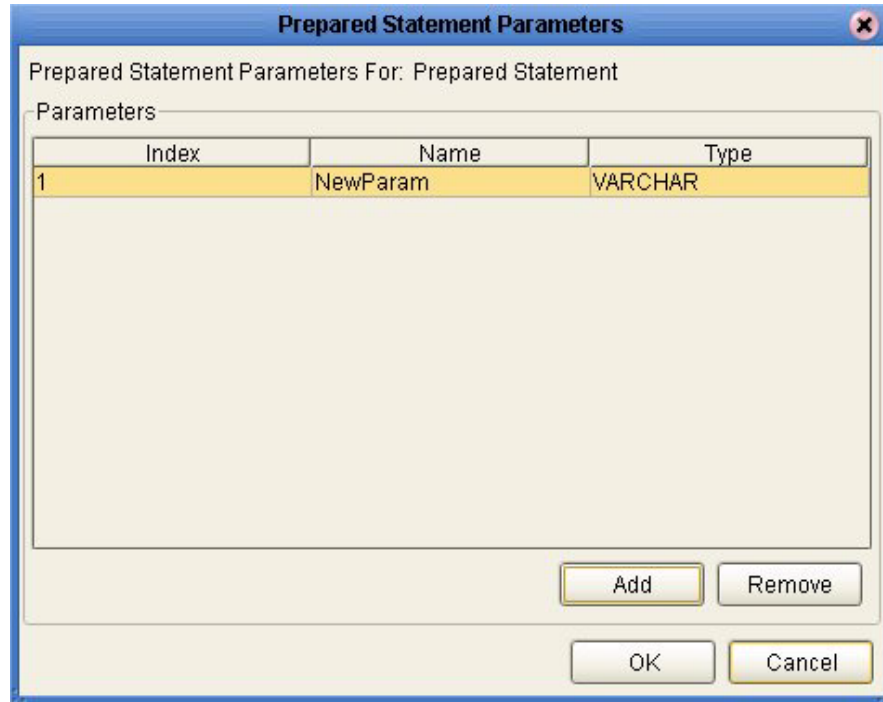
- 4 If desired, when you are finished creating the statement, click **Save As** and give the statement a name. You can also click **Open** to access an existing prepared statement.
- 5 When you are finished, click **OK**.

The **Add Prepared Statements** window displays the name of your new prepared statement in the list pane.

- 6 To edit the parameters, click **Edit Parameters**. Using the resulting dialog box, you can change the data type by clicking the **Type** field and selecting a different type from the list.

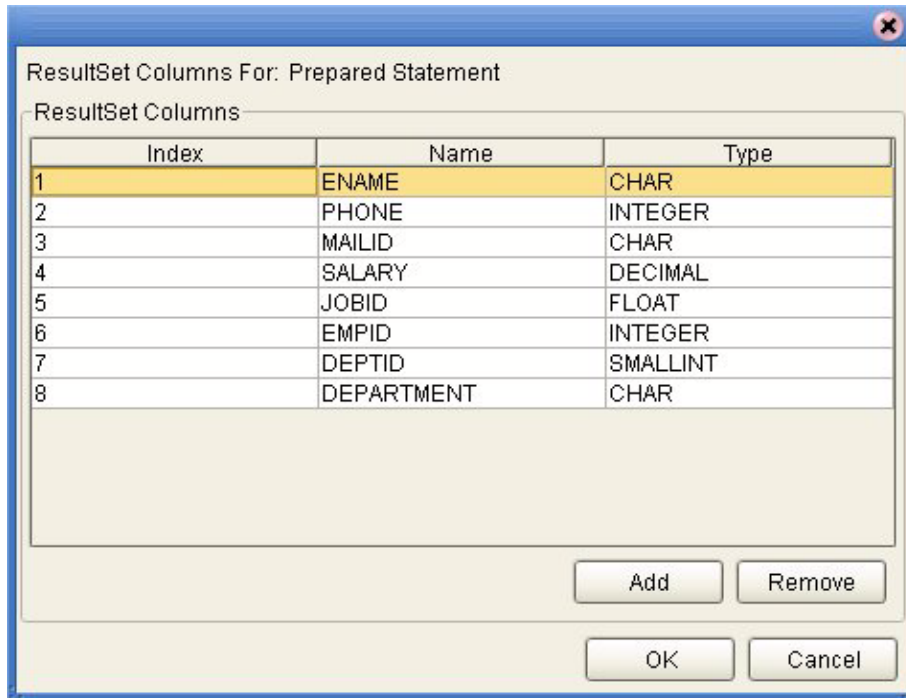
- 7 Click **Add** if you want to add additional parameters to the statement, or highlight a row and click **Remove** to remove it then click **OK**. See Figure 17.

Figure 17 Edit Prepared Statement Parameters



- To edit the result set columns, click **Edit ResultSet Columns**. In the resulting dialog box, both the **Name** and **Type** are editable, but it is recommend that you do not change the name. Doing so can cause a loss of integrity between the result set and the database. See Figure 18.

Figure 18 ResultSet Columns



- When you are finished with the dialog box, click **OK**.
- On the **Add Prepared Statements** window, click **OK**.
- When you are finished with the **Add Prepared Statements** window (see [Figure 15 on page 36](#)), click **Next** to continue.

The **Specify the OTD Name** window appears. See [Figure 19 on page 40](#).

Figure 19 Specify the OTD Name Window

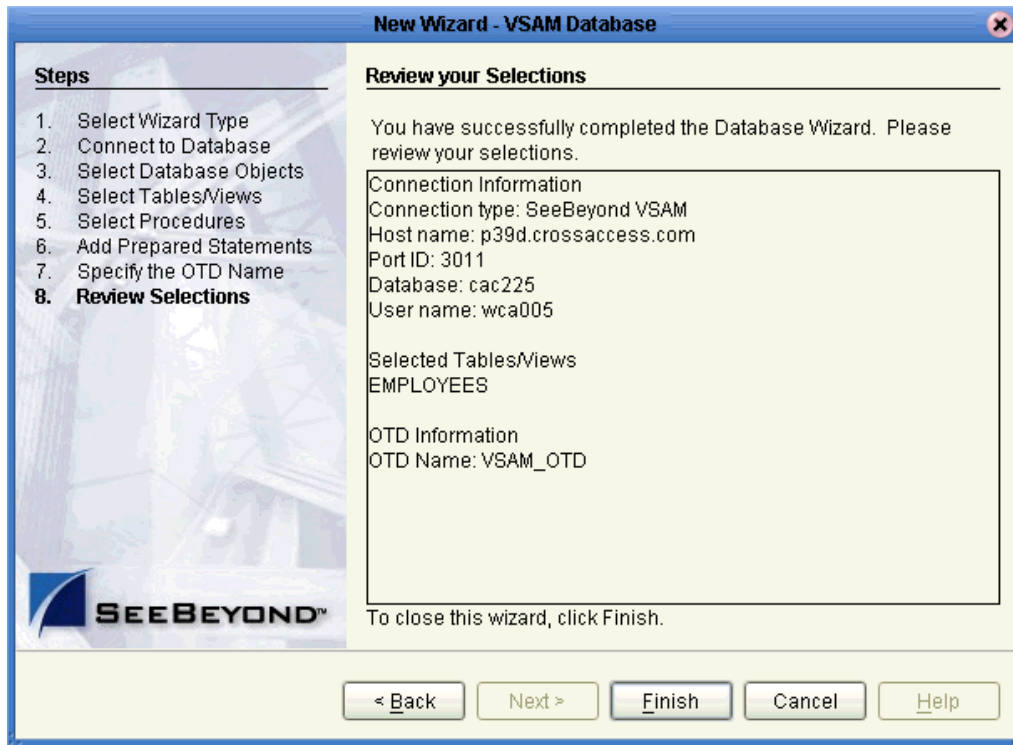


To create the OTD

- 1 Enter a name you want to specify for the current OTD, for example, `VSAM_OTD`, and click **Next**.

The **Review your Selections** window appears. See [Figure 20 on page 41](#).

Figure 20 Review Your Selections Window



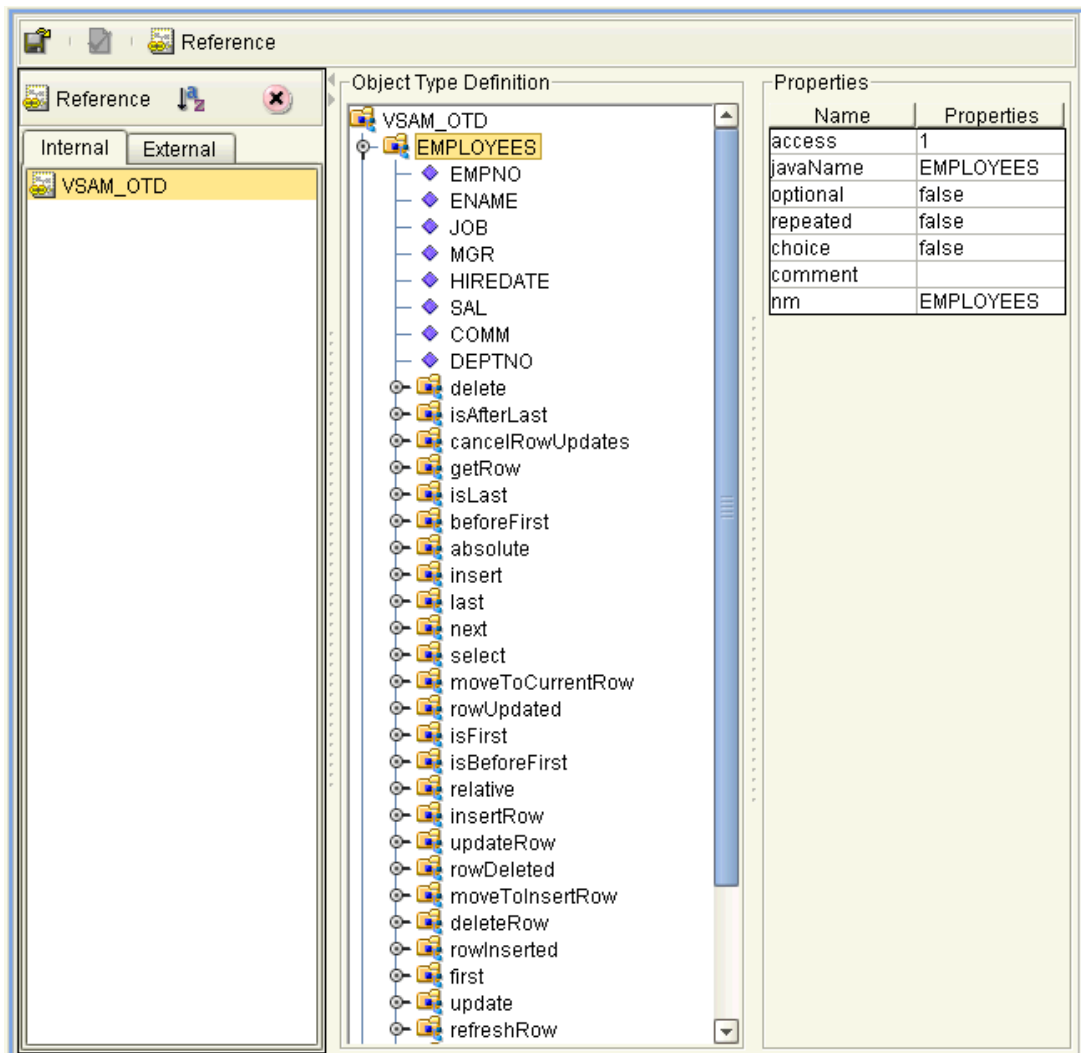
- 2 Review the information you have entered (see Figure 20). If any information is incorrect, click **Back** to return to the desired window and correct it. If all the information is correct, click **Finish** to create your OTD.

4.3 Resulting OTD

The resulting VSAM OTD appears on the eGate Enterprise Designer’s canvas, in the OTD Editor window. See [Figure 21 on page 42](#).

In the example, a node in the OTD has been expanded, allowing you to view some of its structure.

Figure 21 OTD Editor in Enterprise Designer



Reviewing the Sample Projects

This chapter describes how to implement the VSAM eWay via a review of the sample Projects included with the eWay. The following Projects are included:

- Sample that employs SeeBeyond ICAN Suite's eInsight Business Process Manager and operates using eInsight Business Processes
- Sample that operates using Collaborations (Java) in eGate

This chapter assumes that you are already familiar with eGate and eInsight concepts and that you understand the basics of creating a Project using the eGate Enterprise Designer.

For a complete explanation how to use eInsight, see the *eInsight Business Process Manager User's Guide*. For a complete explanation of how to use the eGate Enterprise Designer to create and set properties for the components of an eGate Project, see the *eGate Integrator User's Guide*.

Chapter Topics

- ["eGate Project Description" on page 43](#)
- ["Using the eWay With eInsight" on page 47](#)
- ["Summary: Sample Business Process Project" on page 47](#)
- ["Creating Collaboration Definitions" on page 52](#)
- ["Summary: Sample Collaboration \(Java\) Project" on page 52](#)
- ["Creating the Project's Environment" on page 54](#)
- ["Setting eWay Properties" on page 54](#)
- ["Deploying a Project" on page 55](#)

5.1 eGate Project Description

This section provides an overview of the eGate sample Projects for the VSAM eWay and how to import and use them.

5.1.1 Projects and the Enterprise Designer

A Project contains all of the eGate components you designate to perform one or more desired processes in eGate. Each eGate Project is created using the Enterprise Designer's Project canvas.

The Project canvas contains windows that represent the various stages of your Project. The types of windows in your Project canvas area include:

- **Connectivity Map Canvas:** Contains the eGate business logic components, such as Collaborations, Topics, Queues, and eWays, that you include in the structure of the Project.
- **OTD Editor:** Contains the source files used to create Object Type Definitions (OTDs) to use with a Project.
- **Business Process Canvas:** Allows you to use eInsight's Business Process management features.
- **Collaboration Editor (Java):** Allows you to create and/or modify Business Rules to implement the business logic of a Project's Java-enabled Collaboration Definition.

5.1.2 Importing Sample Projects

Before you can view or work with a sample Project, you must first import it into eGate, using the Enterprise Designer.

***Note:** The sample .zip file you first download may contain more than one Project and/or additional files. If this is the case, you must unzip this file first, find the desired Project file, then import the Project file. For details on how to download this file, see the SeeBeyond ICAN Suite Installation Guide.*

The container file you are looking for is **VSAM_eWay_Sample.zip**. The Project file names are:

- **VSAM_Project_BPEL.zip:** eInsight Project
- **VSAM_Project_JCE.zip:** Collaboration (Java) Project

You can name the imported Projects as desired.

To import a sample Project

- 1 From the Enterprise Designer's **Project Explorer** pane, right-click the desired Repository and select **Import**.
- 2 On the **Import Manager** window, browse to the directory that contains the sample Project .zip file.
- 3 Select the sample Project file and click **Open**.
- 4 Click **Import**. If the import was successful, click **OK** on the **Import Status** dialog box.
- 5 Close the **Import Manager** window and select **Refresh All from Repository** from the shortcut menu.

Important: *An imported Project does not contain an environment or a deployment profile. After importing a Project, you must use the Enterprise Designer to create these functions for the Project. See “[Creating the Project’s Environment](#)” on page 54 and “[Deploying a Project](#)” on page 55. For additional information, see the *eGate Integrator User’s Guide* and *SeeBeyond ICAN Suite Deployment Guide*.*

You must check out the major eGate components before you can change them.

5.1.3 Basic eWay Components

Each Project allows you to set up eWays to perform the necessary operations. To use the VSAM eWay in a Project, you must:

- Set the desired properties settings.
- Create one or more VSAM OTDs.

The sections in this chapter, which describe the Project, explain more about how to do these operations.

VSAM eWay Properties

The properties for the VSAM eWay contains the settings used to connect with a specific external system. You can change these settings using the eGate eWay **Properties** sheet. For more information about VSAM eWay properties and this dialog box, see [Chapter 3](#).

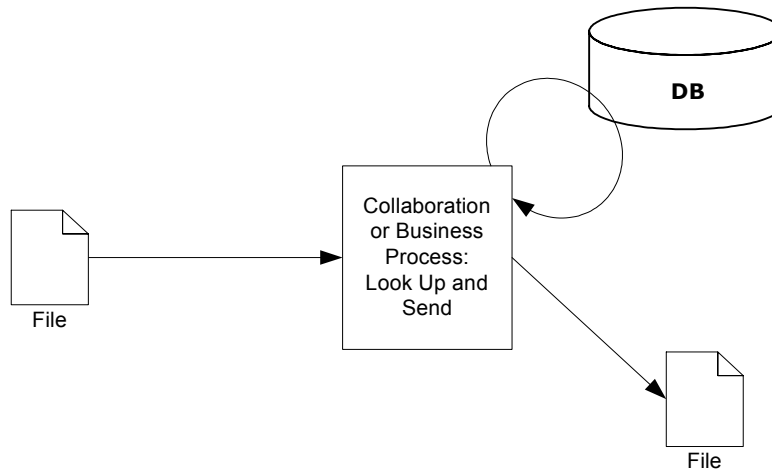
VSAM OTDs

You create the VSAM OTD using the VSAM OTD wizard feature. See [Chapter 4](#) for details on how to use this wizard.

5.1.4 Overview: Sample Projects

The VSAM eWay sample Projects demonstrate how the VSAM eWay processes information from a VSAM system. The resulting information is then written to a text file. Figure 22 shows a general diagram of how this scenario operates.

Figure 22 Sample Project Scenario



Project Components

Each Project has the following components:

- File external application (inbound): **File1**
- Inbound File eWay
- Business logic implementation employs one of the following components:
 - ♦ eInsight Business Process for processing data: **BusinessProcessService**
 - ♦ Collaboration (Java) for processing data: **collabVSAM1**
- VSAM eWay
- External VSAM database: **VSAM1**
- Outbound File eWay
- File external application (outbound): **File2**

Project Operation

Each Project operates as follows:

- **File1:** The external file system that provides query and selection instructions to the inbound File eWay; this eWay gets a text file containing the instructions and passes them to a Business Process, **BusinessProcessService**.
- Business logic implementation employs one of the following components:
 - ♦ **BusinessProcessService:** Sends instructions, using a **SelectOne** Business Process operation, to the desired VSAM database via the VSAM eWay. **BusinessProcessService** also receives the information looked up, via the VSAM eWay, then sends it to a File eWay, **FileOut**.
 - ♦ **collabVSAM1:** Sends instructions, using a **select** method, to the desired VSAM database via the VSAM eWay. **collabVSAM1** also receives the information looked up, via the VSAM eWay then sends it to a File eWay, **FileOut**.
- **VSAM1:** The VSAM database system; the VSAM eWay handles inbound and outbound communication with this database.
- **File2:** The external file system that receives the query information; another File eWay writes the database information to a text file on this system.

Input and Output Data

The sample Project has the following input and output:

- **Input:** Use the file, **inputvsam.txt**, provided with the sample.
- **Output:** The information, in a text file, selected from the database.

5.2 Summary: Sample Business Process Project

This section explains how to implement the VSAM eWay using the eGate Project sample with an eInsight Business Process. This sample is included on your installation CD-ROM. The sample is named **VSAM_Project_BPEL**. It allows you to observe an end-to-end data-exchange scenario involving eGate and the VSAM eWay.

This section also explains how to implement this sample Project, including the VSAM eWay. You can use the procedures given in this section- to create your own Projects based on the sample provided.

5.2.1 Using the eWay With eInsight

You can set up and deploy an eGate component using eInsight. Once you have associated the desired component with a Business Process, the eInsight engine can automatically invoke that component during run time, using a Business Process Execution Language (BPEL) interface.

Note: You must have the *eInsight.sar* file installed to use the features explained in this section. See the *SeeBeyond ICAN Suite Installation Guide* for complete installation procedures.

Using eInsight With eGate Components

Examples of eGate components that can interface with eInsight in this way are:

- Java Messaging Service (JMS)
- Object Type Definitions (OTDs)
- An eWay
- eGate Services

Using the eGate Enterprise Designer and its eInsight canvas, you can add a desired operation to a Business Process, then associate that process with an eGate component, for example, a Service. In the Enterprise Designer, associate the Business Process and Service icons using drag-and-drop operations.

See the *eInsight Business Process Manager User's Guide* for details.

VSAM eWay With eInsight

You can add VSAM eWay objects to an eInsight Business Process during the system design phase. To make this association, select the desired operation, for example **Insert** or **Update**, under the eWay in the Enterprise Explorer and drag it onto the eInsight Business Process canvas. In turn, you can activate a Business Process in eGate by dragging it onto a Service or onto the Business Process canvas.

At run time, the eInsight Engine is able to invoke each of the steps in order as set up in the Business Process. Using the engine's BPEL interface, eInsight in turn invokes the VSAM eWay operations, as well as any other eWays in the current Project.

Table 1 shows the eInsight Business Process operations available to the VSAM eWay, as well as the inputs and outputs to each of these operations.

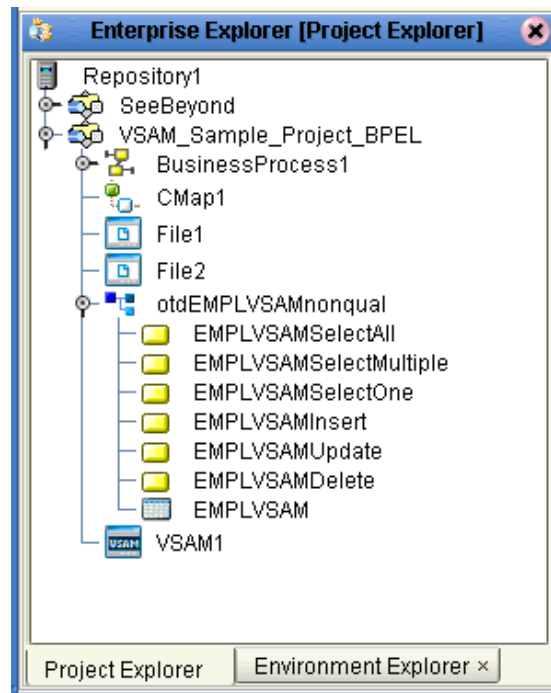
Table 1 Available eInsight VSAM Business Process Operations

eInsight Business Process Operation	Input	Output
SelectAll	where() clause (optional)	Returns all rows that fit the condition of the where() clause.
SelectMultiple	Number of rows where() clause (optional)	Returns the number of rows specified that fit the condition of the where() clause.
SelectOne	where() clause (optional)	Returns the first row that fits the condition of the where() clause.
Insert	Definition of new item to be inserted	Returns status of the insert operation.
Update	where() clause	Returns status of the update operation.
Delete	where() clause	Returns status of the delete operation.

Note: The *where* clause can be left blank for *SelectAll*, *SelectMultiple*, and *SelectOne*. If this clause is imbedded in an input file, the file can contain nothing (empty). If the clause is imbedded in a **Literal**, it can be a blank **Literal**.

Figure 23 shows the Enterprise Designer’s **Project Explorer** with all the VSAM eWay Business Process operations exposed under the OTD icon.

Figure 23 Project Explorer With Business Process Operations



Before you can make these Business Process operations available, you must first create a VSAM OTD using the Database wizard. See [Chapter 4](#) for details on this operation.

5.2.2 Using a Business Process

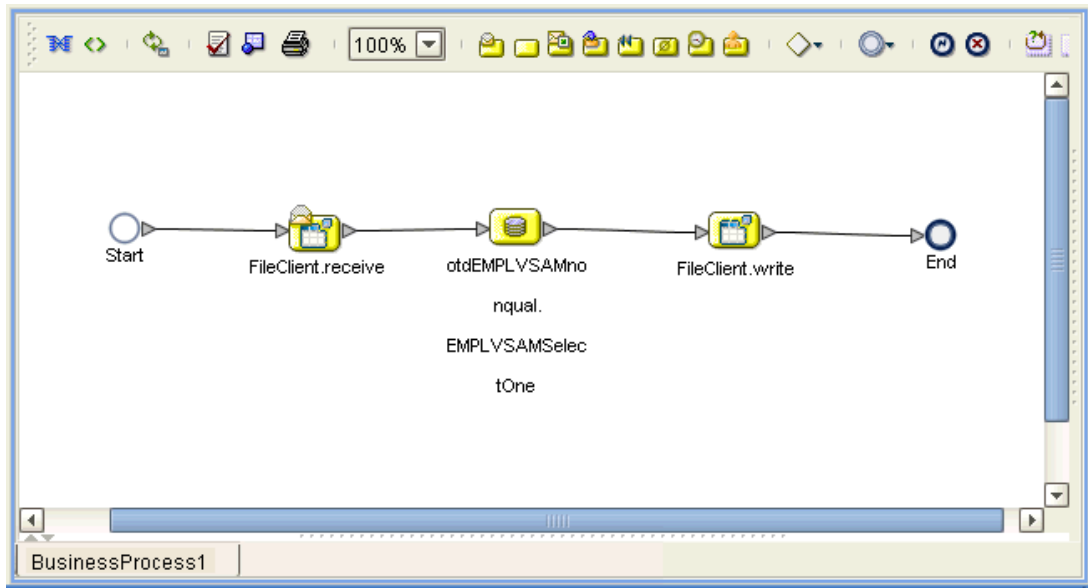
Once you have designed your Business Process for this sample, you can use the eGate Enterprise Designer to create it. See [“Overview: Sample Projects” on page 46](#) for a description of the sample’s Business Process.

The eInsight sample Project Business Process includes the following steps:

- 1 An inbound File eWay subscribes to an external directory, and picks up a text request for specific data. The sample Project uses the text request **EMPID=1** to acquire data from a VSAM database.
- 2 The File eWay sends the data to an eInsight Activity, which then sends a request to the VSAM eWay to get and return the requested data from the VSAM database.
- 3 The eInsight Activity converts the related data received from the VSAM database to a text file and then uses an outbound File eWay to publish this information an external file.

Figure 24 on page 50 demonstrates how these operations appear on the sample Project's Business Process canvas.

Figure 24 Sample Project Business Process



5.2.3 Configuring the Modeling Elements

Business Rules are defined and configured between the Business Process Activities located on the modeling canvas. The sample Project contains the Business Rules that govern each of the Activities listed in a Business Process flow.

Business Rules found in the sample Project include:

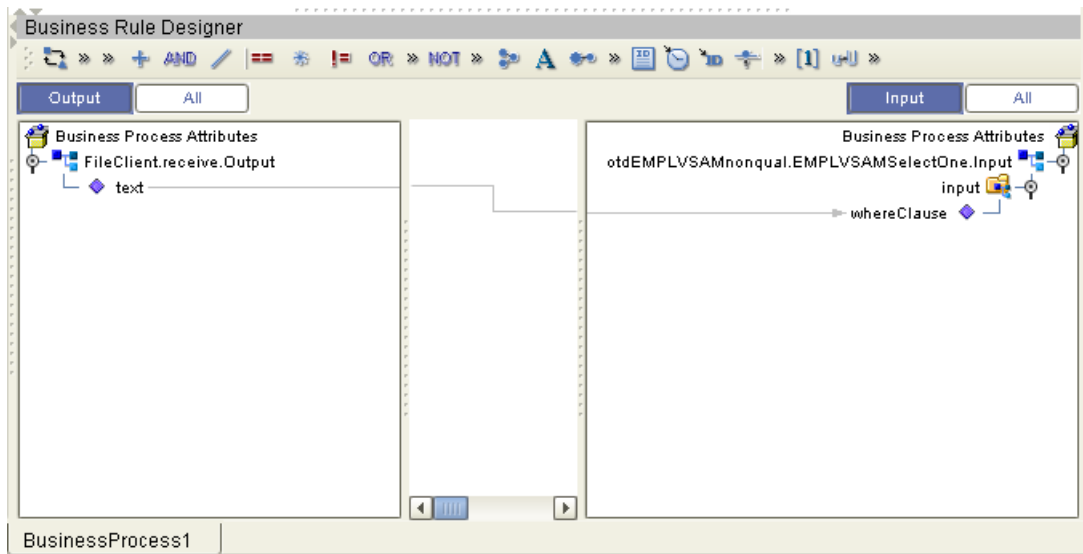
- "Copying the Output File" on page 50
- "Returning the Value" on page 51

Note: A detailed description of the steps required to configure modeling elements is found in the *eInsight Business Process Manager User's Guide*.

Copying the Output File

The **FileClient.receive.Output** container copies the output file containing the text request **EMPID=1**, and queries a **whereClause** in the **OTD** input container. See [Figure 25 on page 51](#).

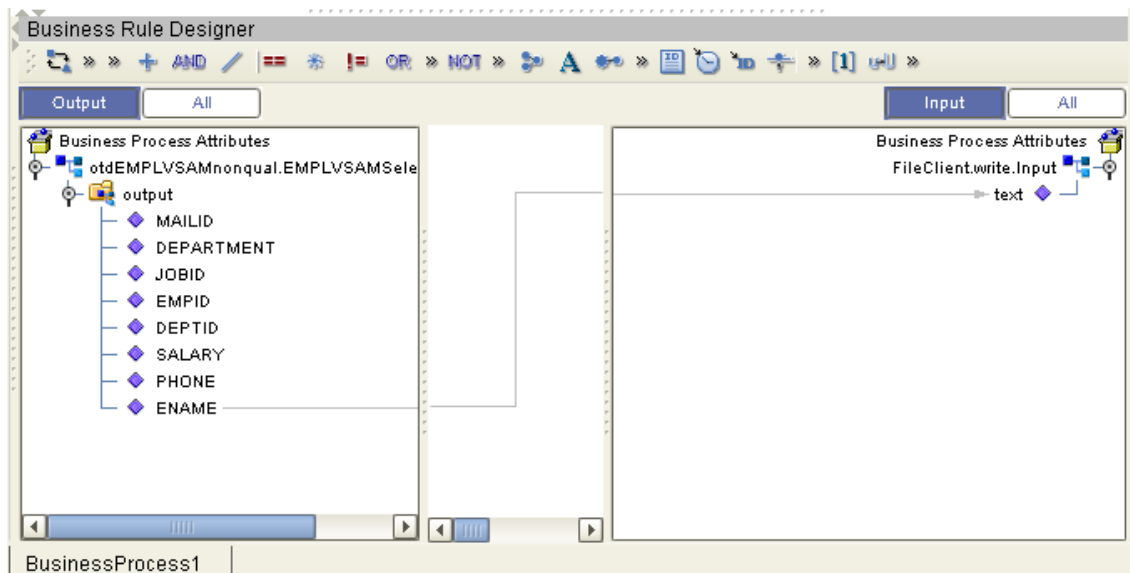
Figure 25 Copying the Output File



Returning the Value

The OTD output container queries the VSAM database for all text values of the type **ENAME** that have employee IDs that fit the condition (**EMPID=1**), then writes the resulting value to a text file using the **FileClient.write.Input** container. See Figure 26.

Figure 26 Returning the Requested Value



5.2.4 Completing the Project

For instructions on how to finish implementing your Project, see the following sections:

- [“Creating the Project’s Environment” on page 54](#)
- [“Setting eWay Properties” on page 54](#)
- [“Deploying a Project” on page 55](#)

5.3 Summary: Sample Collaboration (Java) Project

This section explains generally how to implement the VSAM eWay using the eGate Project sample with Java-based Collaborations. This sample is included on your installation CD-ROM. The sample is named **VSAM__Project_JCE**. It allows you to observe an end-to-end data-exchange scenario involving eGate and the VSAM eWay.

For instructions on how to import the sample Project, see the [procedure on page 44](#). For an overview of the sample Project and what it does, see [“Overview: Sample Projects” on page 46](#).

5.3.1 Creating Collaboration Definitions

The eGate Enterprise Designer contains a Collaboration Definition wizard (Java) that allows you to create Java-based Collaborations. You must use the wizard to create a Collaboration Definition before implementing the Collaboration.

5.3.2 Using the Collaboration Editor (Java)

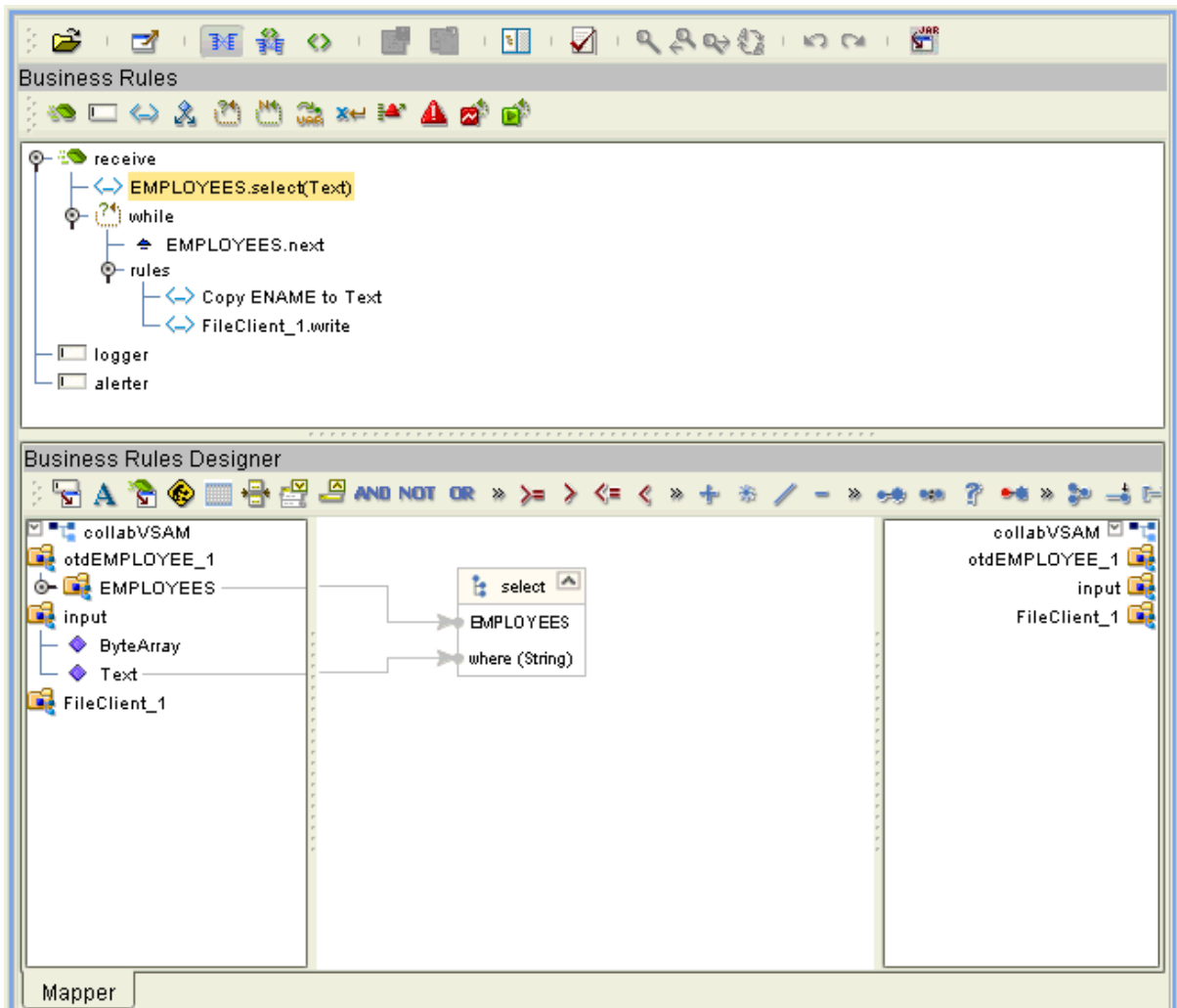
The Collaboration Editor (Java) window displays in the Enterprise Designer after you create a Collaboration Definition (Java). You can also open this Editor by right-clicking on the name of the desired Collaboration Definition in the **Project Explorer** and choosing **Open** from the pop-up menu.

This user interface allows you to create the Business Rules that implement your business logic for a Java-enabled Collaboration. You can create the desired Business Rules for your Project by dragging and dropping values from a source OTD onto the nodes of a destination VSAM OTD and other OTDs. VSAM OTD nodes represent VSAM functions, which are in turn able to call VSAM methods.

See the *eGate Integrator User’s Guide* for complete information on how to use the Collaboration Editor (Java).

See Figure 27 for an example of the Collaboration Editor (Java).

Figure 27 Collaboration Editor (Java) and Business Rules



5.3.3 Completing the Project

For instructions on how to finish implementing your Project, see the following sections:

- [“Creating the Project’s Environment” on page 54](#)
- [“Setting eWay Properties” on page 54](#)
- [“Deploying a Project” on page 55](#)

5.4 Creating the Project's Environment

This section provides general procedures for creating an Environment for your Project. For a complete explanation, see the *eGate Integrator User's Guide*.

To create an Environment

- 1 From the Enterprise Designer, click the **Environment Explorer** tab on the Enterprise Explorer.
- 2 Under the current **Repository** icon in the **Environment Explorer**, create a new environment for your Project and name it as desired.
- 3 In the **Environment Explorer**, right-click the **Environment** icon and select the desired external systems from the pop-up menu. Include external systems for the VSAM eWay and the File eWays (inbound and outbound). Give them the same names as you did the corresponding external applications on the Connectivity Map.
- 4 Use the same pop-up menu to create a Logical Host for your Project, and name it as desired.
- 5 Click **Save** and return to the **Project Explorer** tab.

5.5 Setting eWay Properties

You must set the eWay properties for your specific system and for the current Project, using the eGate Enterprise Designer. For directions on accessing and using the eWay **Properties** sheet, as well as a complete explanation of the VSAM eWay properties, see [Chapter 3](#).

To set properties for the File eWays

- 1 From the **Project Explorer**, open the **CMap_VSAMSelect** Connectivity Map for the sample Project.
- 2 To change the default properties for the inbound File eWay, double-click the **FileIn** external system's eWay icon. For this eWay, select the **Inbound** properties.

The eWay **Properties** sheet appears. This eWay can use the current default properties settings for the sample Project. However, if you are using different file names and/or folders than the defaults, you must enter the names of the files/folders you are using.

Note: *Even if you do not change the eWay's properties, you must open each **Properties** sheet for every eWay and click **OK** to activate the eWay.*

- 3 For this sample, use the **C:\temp** as the property for **Directory**, and for **Input file name**, enter ***.txt**.
- 4 Click **OK** to save the settings and close the eWay **Properties** sheet.

- 5 To change the default properties for the outbound File eWay, double-click the **FileOut** external system's eWay icon. For this eWay, select the **Outbound** properties.

Use your file and folder names if they differ from the defaults. For all other properties, you can use the defaults.

- 6 Click **OK** to close the dialog box and save.

To set properties for the VSAM eWays

- 1 To begin changing the default properties for the VSAM eWay, double-click the **VSAM1** external system's eWay icon.

The eWay **Properties** sheet appears.

- 2 The properties settings appear in the **Properties** pane on the left.
- 3 Set the properties as desired then click **OK** to close the dialog box and save.
- 4 From the Enterprise Designer, click the **Environment Explorer** tab.
- 5 In the **Environment Explorer**, right-click the new Environment you created for your Project, and select **New VSAM External System**. Give this system the same name as you gave the corresponding external application (**VSAM1**) created on the Connectivity Map in the **Project Explorer**.

For details on how to do these operations, see the *eGate Integrator User's Guide*.

- 6 In the left pane, right-click the **VSAM1** external system icon and select **Properties** from the pop-up menu.

The eWay **Properties** sheet appears. Use this dialog box to set additional properties settings.

- 7 The properties settings appear in the **Properties** pane on the left.
- 8 For the settings, enter the information appropriate to your system.
- 9 Click **OK** to close the dialog box and save.

5.6 Deploying a Project

This section provides general procedures for Project deployment.

5.6.1 Basic Steps

For a complete explanation of how to deploy and run an eGate Project, see the *eGate Integrator User's Guide* and *SeeBeyond ICAN Suite Deployment Guide*.

To deploy the Project

- 1 From the **Project Explorer**, select the current Project and right-click, choosing **New > Deployment Profile** from the pop-up menus.

- 2 From the **Create a Deployment Profile** dialog box, enter the name of the current Project and select the Environment you created for this Project.
- 3 Click **OK**.

The Deployment Profile canvas appears as follows:

- ♦ The Project's external applications and Services show up as icons on the left side of the canvas.
 - ♦ The external systems and Logical Host you created under "**Creating the Project's Environment**" on page 54 show up as windows on the right side of the canvas.
- 4 Set up your Deployment Profile by dragging the icons on the left into the corresponding window on the right.
 - 5 Click **Save All** then **Activate**.

When the Project has been activated, a pop-up message appears stating the activation was successful.

To run the Project

For instructions on how to run a Project, see the *eGate Integrator User's Guide*.

5.6.2 Alerting and Logging

eGate provides an alerting and logging feature. This feature allows the monitoring of messages and captures any adverse messages in the order of severity, based on a configured severity level and higher. See the *eGate Integrator User's Guide* for an explanation of how to enable the Logging feature.

Using VSAM OTDs

This chapter describes operations you can perform using VSAM Object Type Definitions (OTDs) in eGate.

Chapter Topics

- [“Overview” on page 57](#)
- [“Using Tables” on page 57](#)
- [“Using Views” on page 68](#)
- [“Using Prepared Statements” on page 69](#)

6.1 Overview

This section explains the types of VSAM OTDs used with the eWay within the Collaboration Editor (Java), including the OTD’s methods.

You can use VSAM OTD methods with:

- Tables (table OTD)
- Views (view OTD)
- Prepared statements (prepared statement OTD)

Views are read-only and for informational purposes only. Use the OTD wizard (see [Chapter 4](#)) to create the VSAM Database OTDs.

User-defined OTD

You can use the OTD wizard to create an eGate User-defined OTD. See the *eGate Integrator User’s Guide* for a complete explanation of how to create a User-defined OTD.

6.2 Using Tables

A table OTD represents a database table. It consists of fields and methods. Fields correspond to the columns of a table, while methods are the operations that you can apply to the OTD. This setup allows you to perform select, update, insert, and delete SQL operations in a table.

6.2.1 Using the select Method

The **select** method returns result sets according to a group of predefined defaults. However, you can change these defaults, if desired. In using the **select** method, you can specify the following types of result sets:

- TYPE_FORWARD_ONLY
- TYPE_SCROLL_INSENSITIVE
- TYPE_SCROLL_SENSITIVE

You can also specify the following result sets with a type of concurrency:

- CONCUR_READ_ONLY
- CONCUR_UPDATABLE

To perform an update, insert or delete operation, the type of the result set returned by the **select** method must be CONCUR_UPDATABLE.

Instead of specifying the type of result set and concurrency in the **select** method, you can also use the following methods:

- **setConcurrencytoUpdatable**
- **setConcurrentlytoReadOnly**
- **setScrollTypetoForwardOnly**
- **setScrollTypetoScrollSensitive**
- **setScrollTypetoInsensitive**

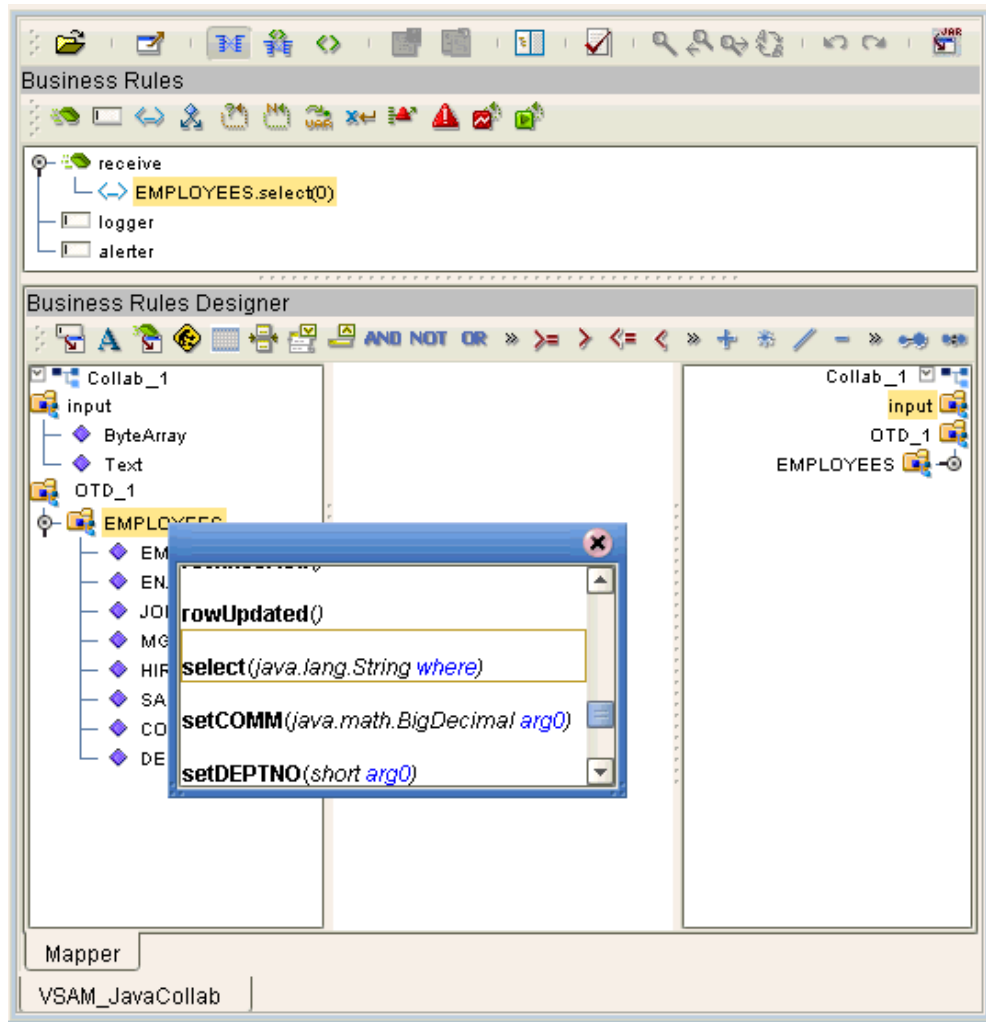
Note: *Because of driver limitations, before you can do any modifications (insert, update, or delete) to a table, the table must be under CICS control on the mainframe.*

To call a method in the Collaboration Editor (Java)

- 1 Open the eGate Enterprise Designer's Collaboration Editor (Java) for the desired Collaboration Definition.
- 2 In the editor, navigate to the Business Rules Designer.
- 3 Right-click on the desired node (right or left pane) where you want to call the method.

A pop-up **Method** selection menu appears, showing the methods available for the node. See Figure 28.

Figure 28 Method Selection Menu for the select Method



- 4 Select the desired method.

A **Method** box appears in the center pane of the Business Rules Designer. This box represents the chosen method.

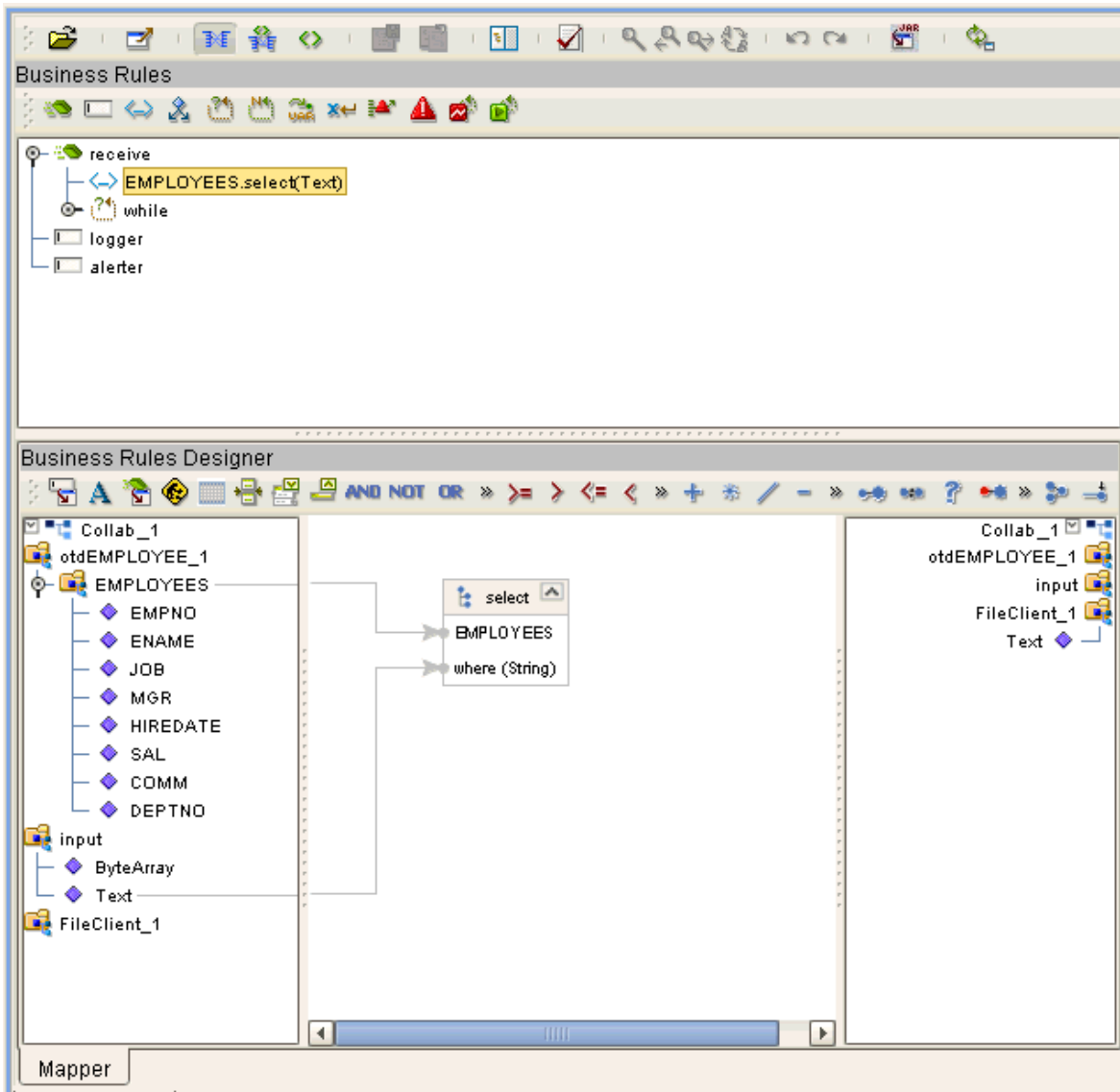
Note: Using the *commit* method is optional for all update operations because the Collaboration automatically commits the current transaction when it is done.

6.2.2 Select Operations

To perform a select operation on a table

- 1 Call the **select** method with the **where** clause specified, if necessary. See Figure 29.

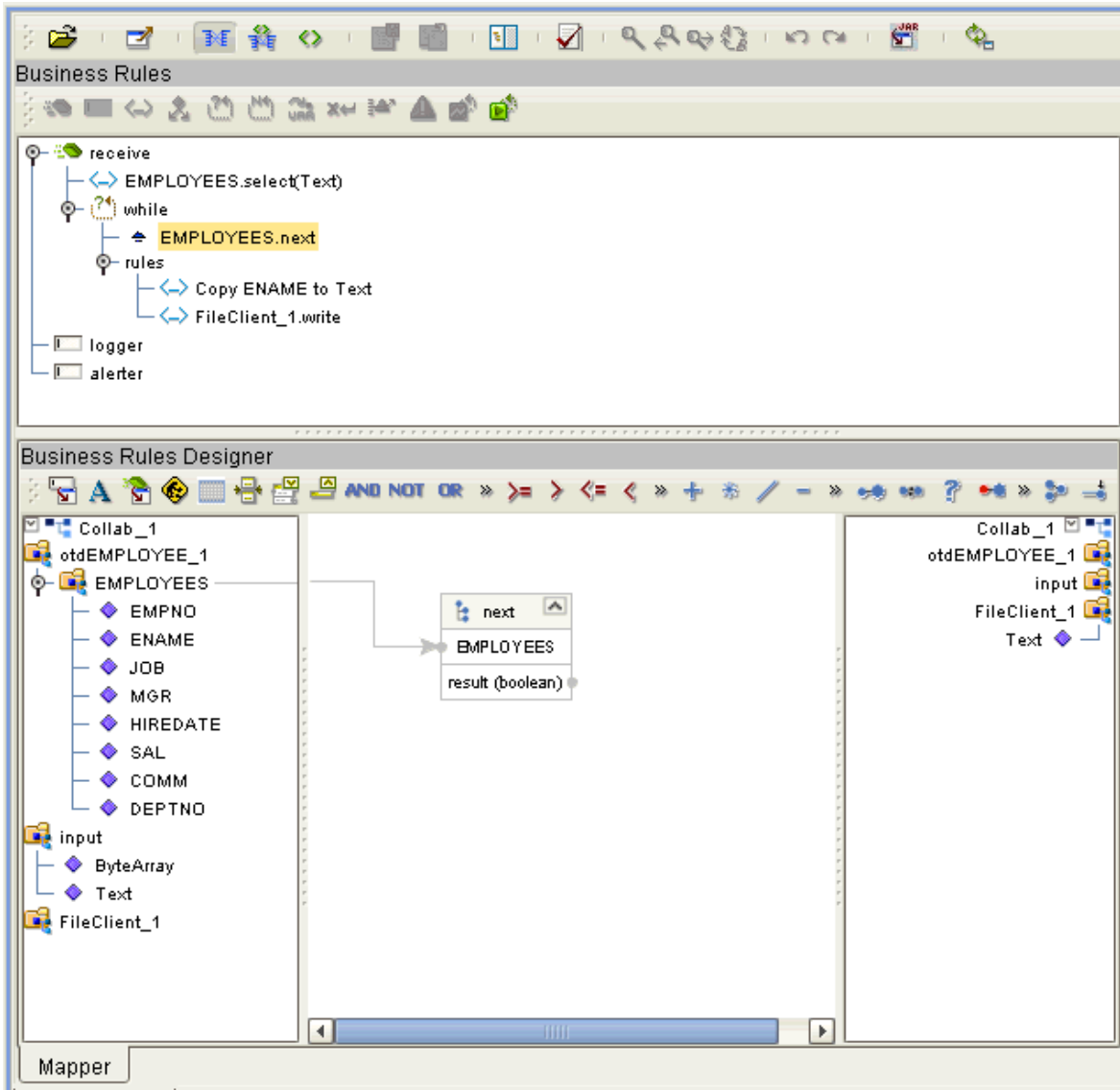
Figure 29 Select Operation: select Method



The text from the **Text** node instructs the Business Process exactly which data needs to be selected. For example, the content of the input text could be **EMPNO>100**.

- 2 Loop through the result set using the **next** method. See Figure 30.

Figure 30 Select Operation: next Method



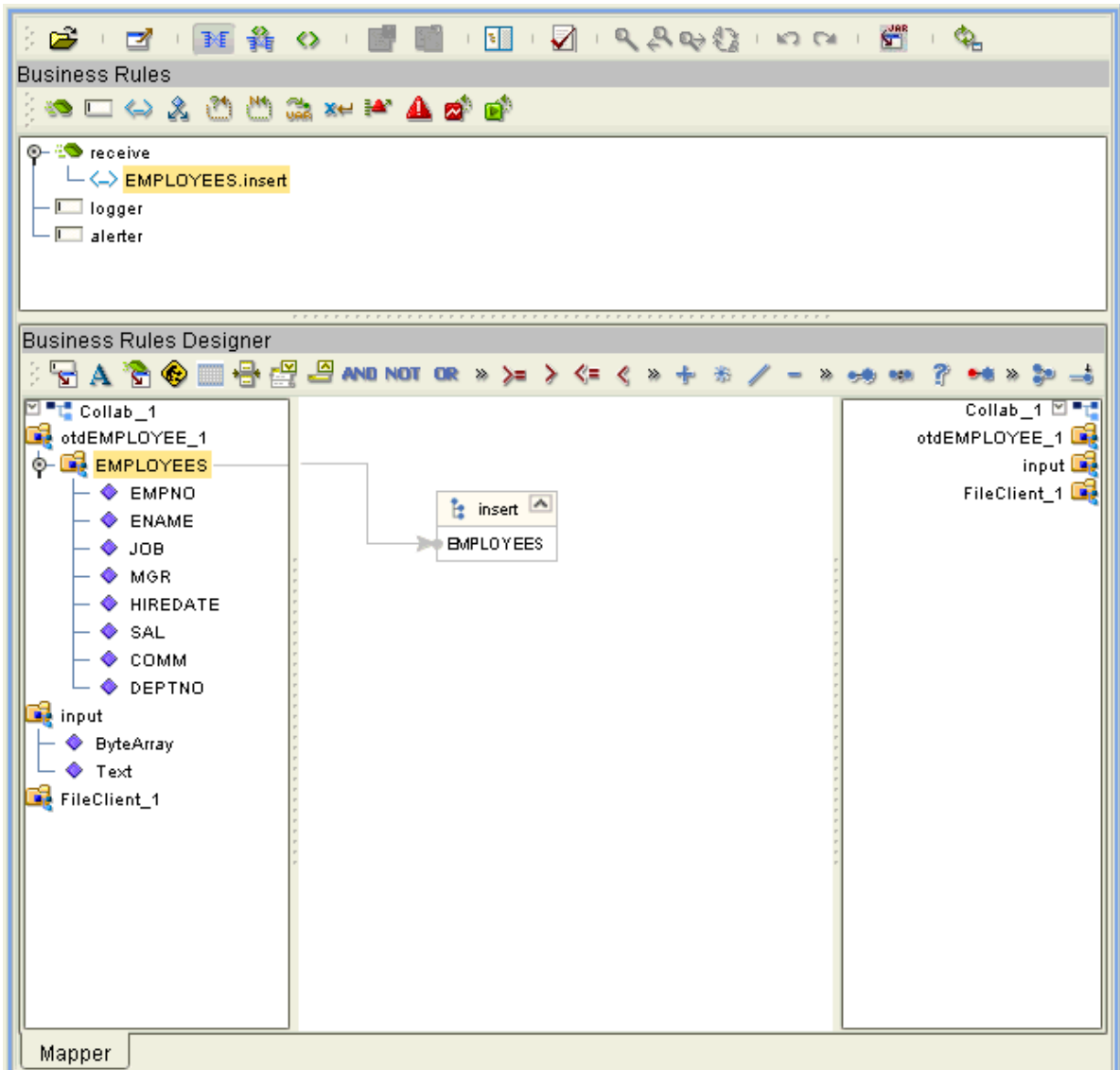
- 3 For each loop, process the return record.

6.2.3 Insert Operations

To perform an insert operation on a table

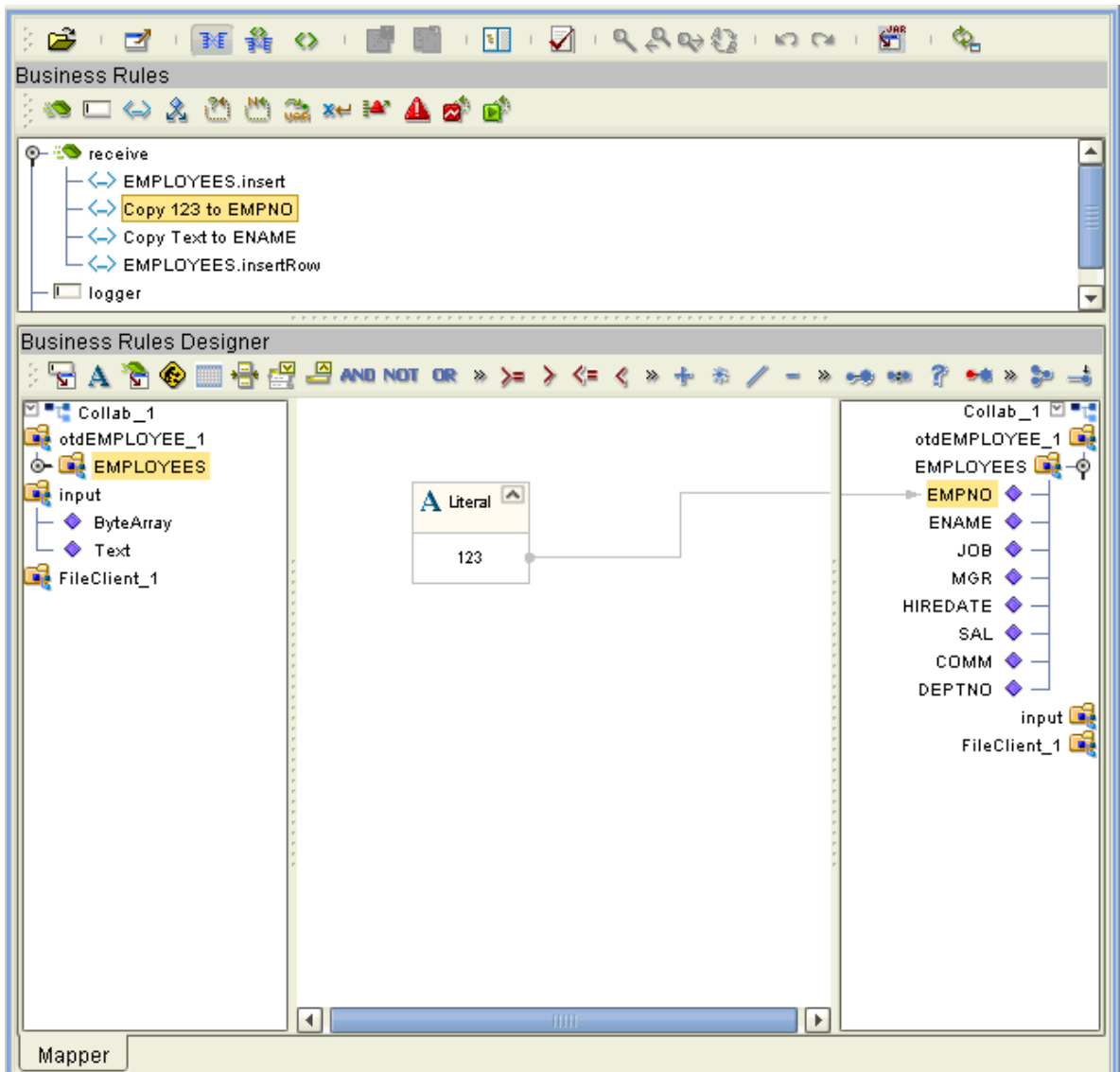
- 1 Call the `insert` method. See Figure 31.

Figure 31 Insert Operation: insert Method



- 2 Set the fields of the table OTD where you want to do the insertion and insert the row using a **Literal**. See Figure 32.

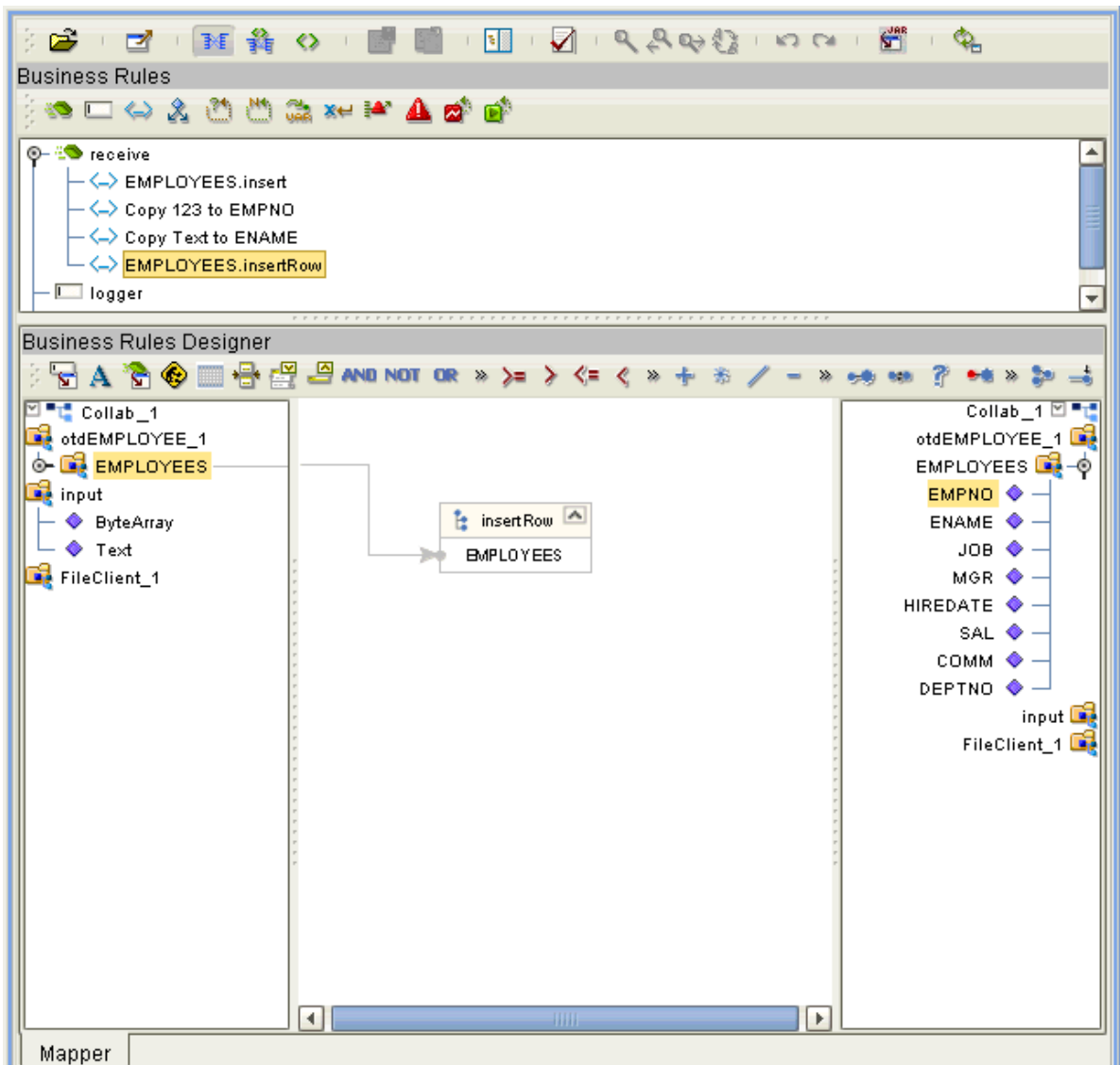
Figure 32 Insert Operation: Literal Indicates the Value Inserted



If you want to update multiple columns, you can repeat the **Copy** rule, as desired.

- 3 Activate the insertion by calling the `insertRow` method. See Figure 33.

Figure 33 Insert Operation: insertRow Method



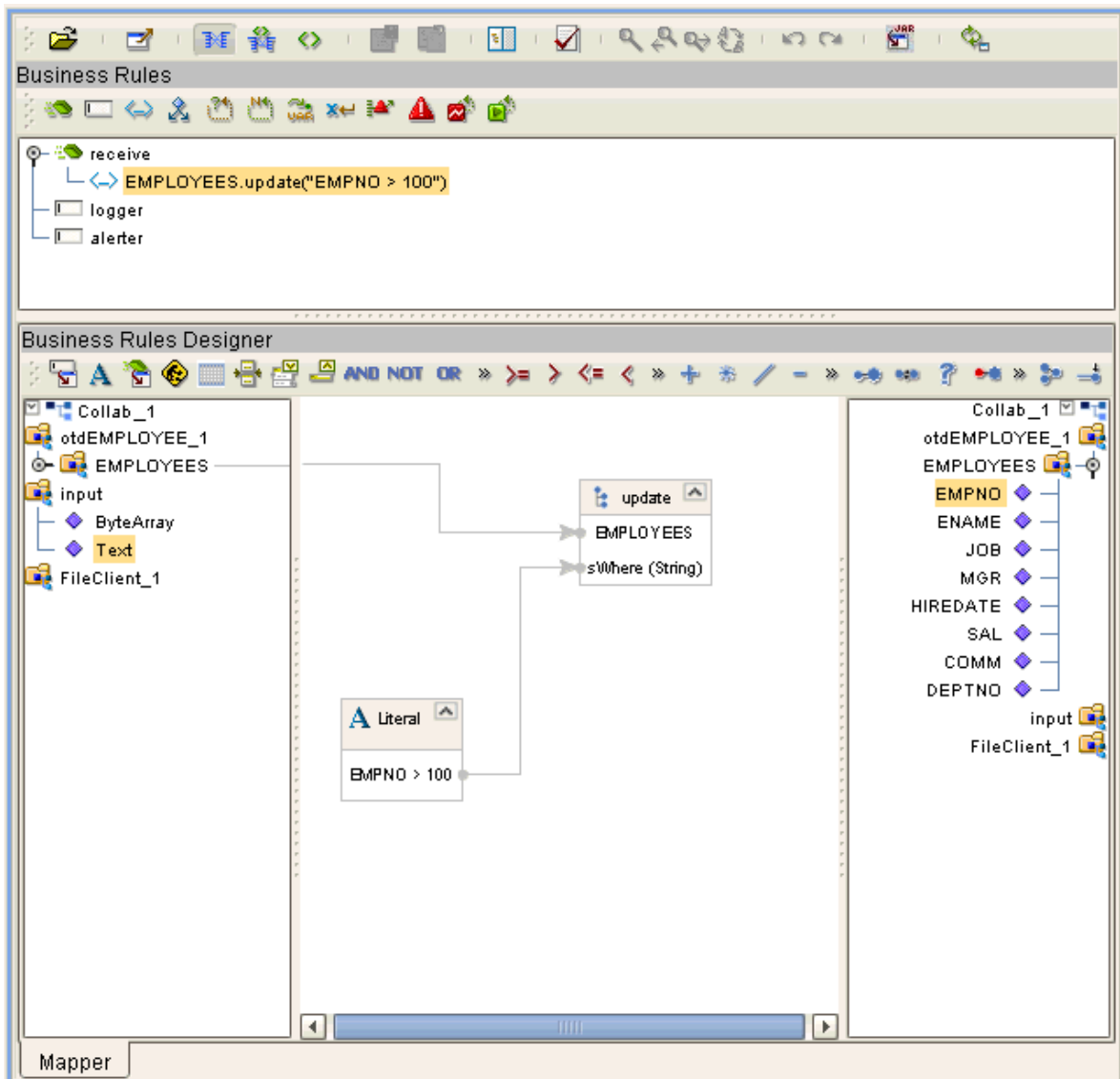
For multiple insert operations, you can use a **while** rule.

6.2.4 Update Operations

To perform an update operation on a table

- 1 Call the **update** method with the **where** clause specified, if necessary. See Figure 34.

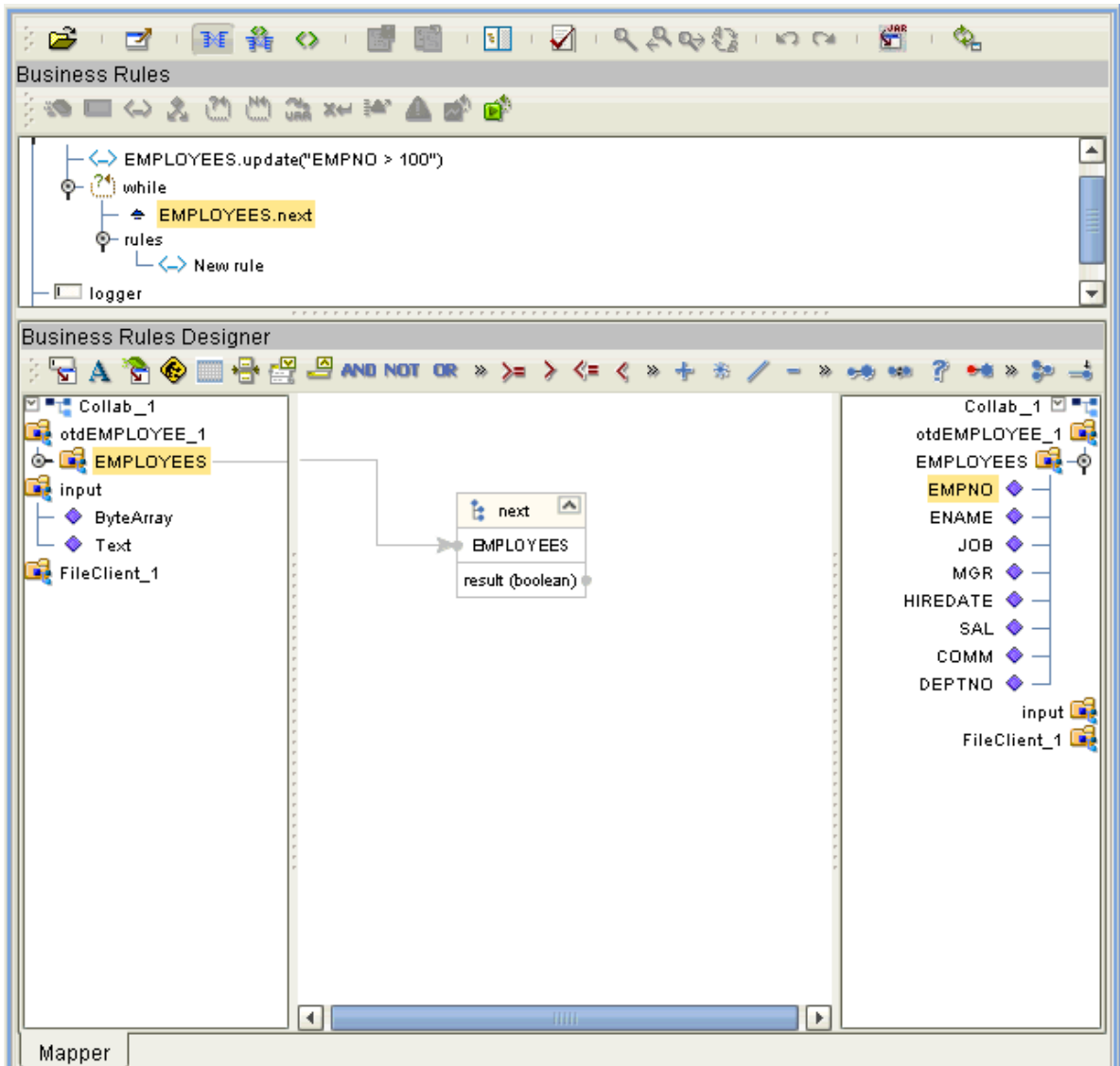
Figure 34 Update Operation: select Method With Literal



In this case, a **Literal** is used instead of the text node as shown in [Figure 31 on page 62](#). Either way of specifying the **where** clause is acceptable.

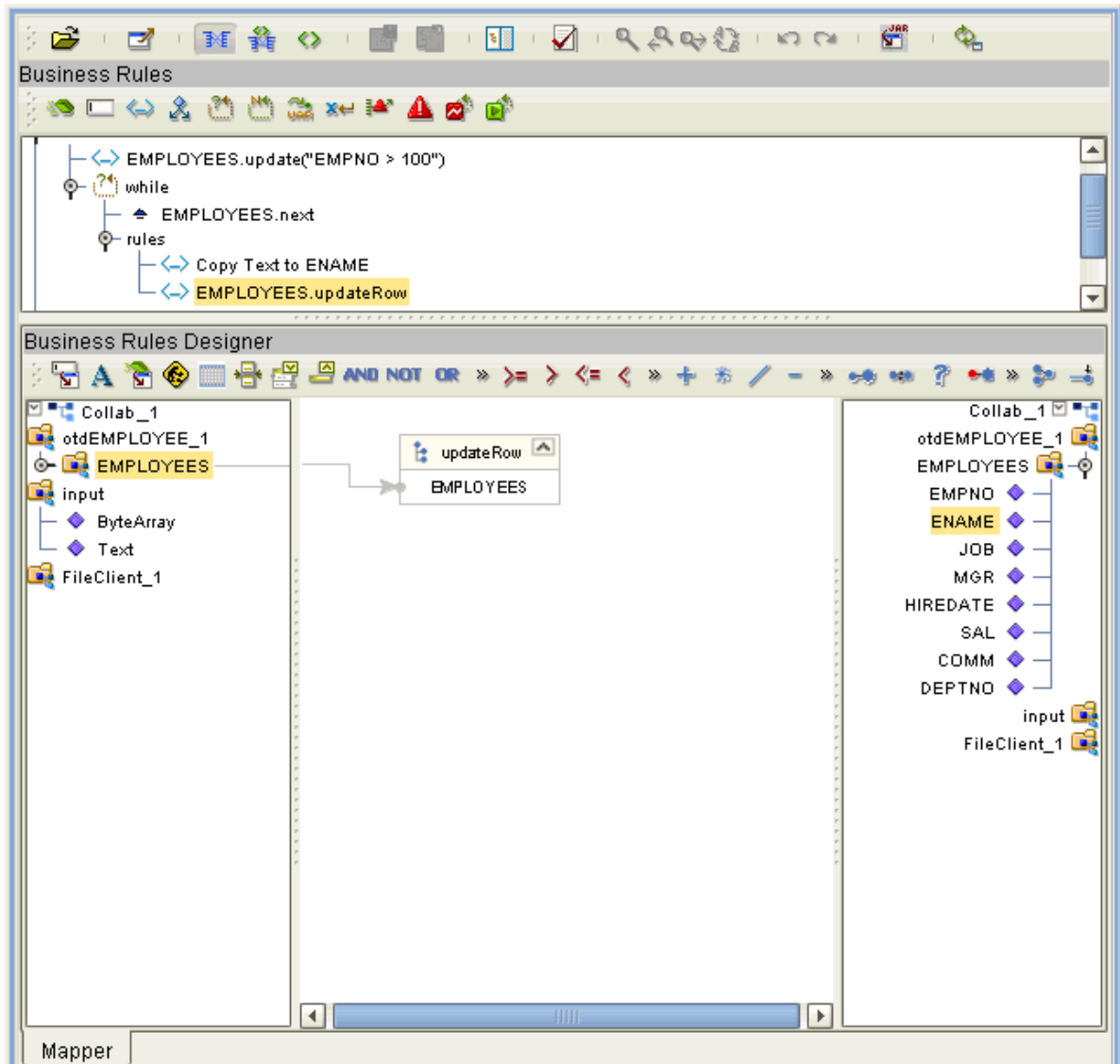
- 2 Call the **next** method. See Figure 35.

Figure 35 Update Operation: next Method



- 3 Update the row by calling **updateRow**. See Figure 36.

Figure 36 Update Operation: updateRow Method



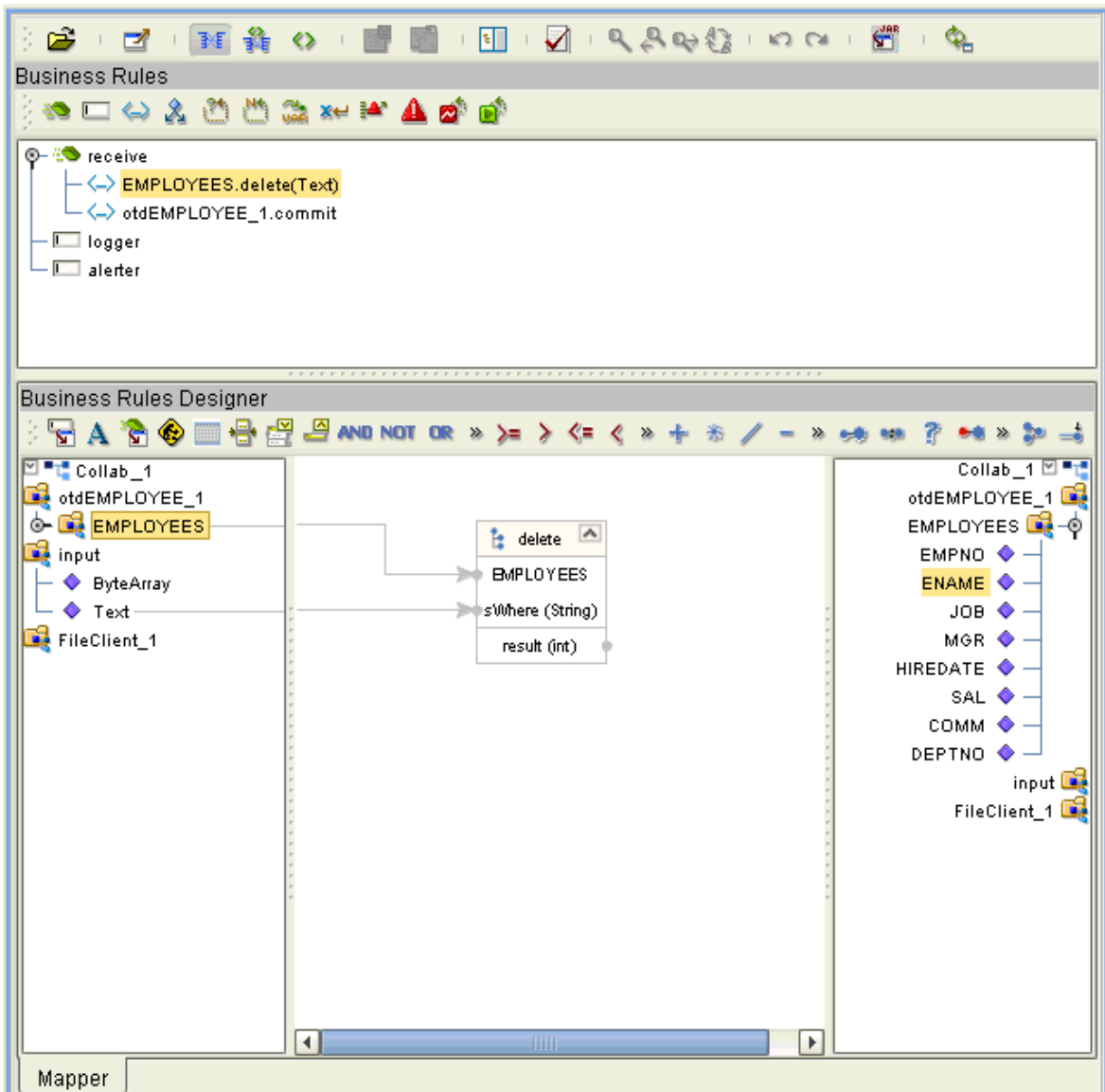
To update more than one column, you can repeat the **Copy** rule, as desired.

6.2.5 Delete Operations

To perform a delete operation on a table

- Call the **delete** method with the **where** clause specified, if necessary. See [Figure 37 on page 68](#).

Figure 37 Delete Operation: delete Method



6.3 Using Views

Views are used to look at data from selected columns within selected tables. View OTDs are read-only.

For select operations, see [“Select Operations” on page 60](#).

6.4 Using Prepared Statements

You can perform table operations with prepared statements with the same method nodes you use for the regular table operations, that is, select, update, insert, and delete SQL operations.

Prepared statements allow you to create any valid SQL statements that comply with ANSI standards. Using this feature, you can execute **select** statements such as **joins** and **union**, **insert**, **update** and **delete** operations. You can also include database operations such as **to_date**, to manipulate input or output values. Parameter markers are also supported.

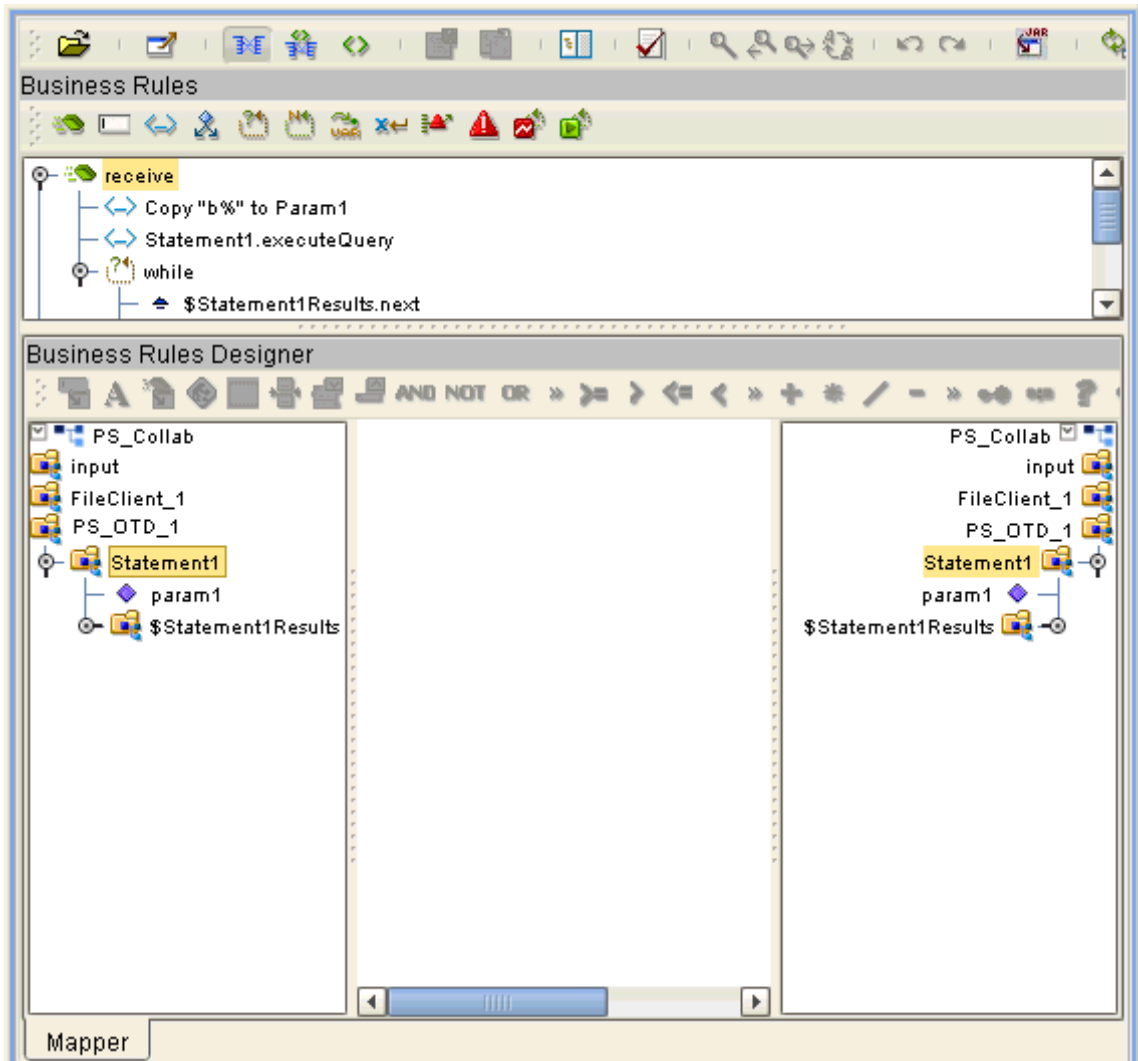
Any prepared statement you create shows up in the Collaboration Editor (Java) on the OTD where it was created, as a node with the name you assigned to it. You can implement the statement by dragging its node onto the method box for the action (the desired select, update, insert, or delete operation) in which you want the statement to be used.

To use a prepared statement in a Collaboration (Java)

- 1 Using the Enterprise Designer and VSAM OTD wizard, create an OTD that contains a prepared statement. See the [procedure on page 36](#) for details.
- 2 Create the desired Collaboration Definition (Java) using this OTD.

The Collaboration Editor (Java) displays the OTD with a **Prepared Statement** node as shown in [Figure 38 on page 70](#).

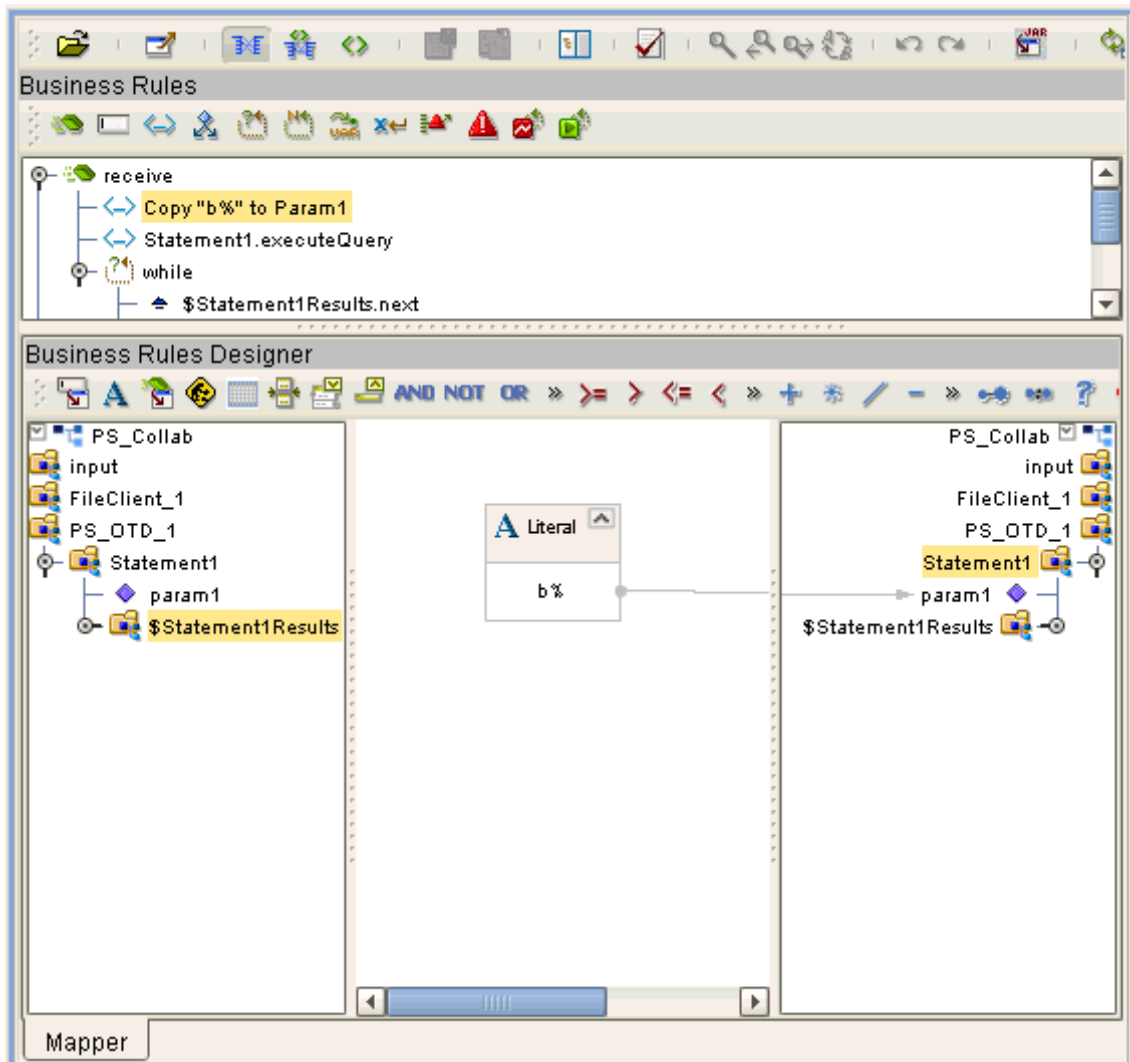
Figure 38 Prepared Statement Collaboration



In the OTD structure, you can see both the input parameter and the result set represented as nodes.

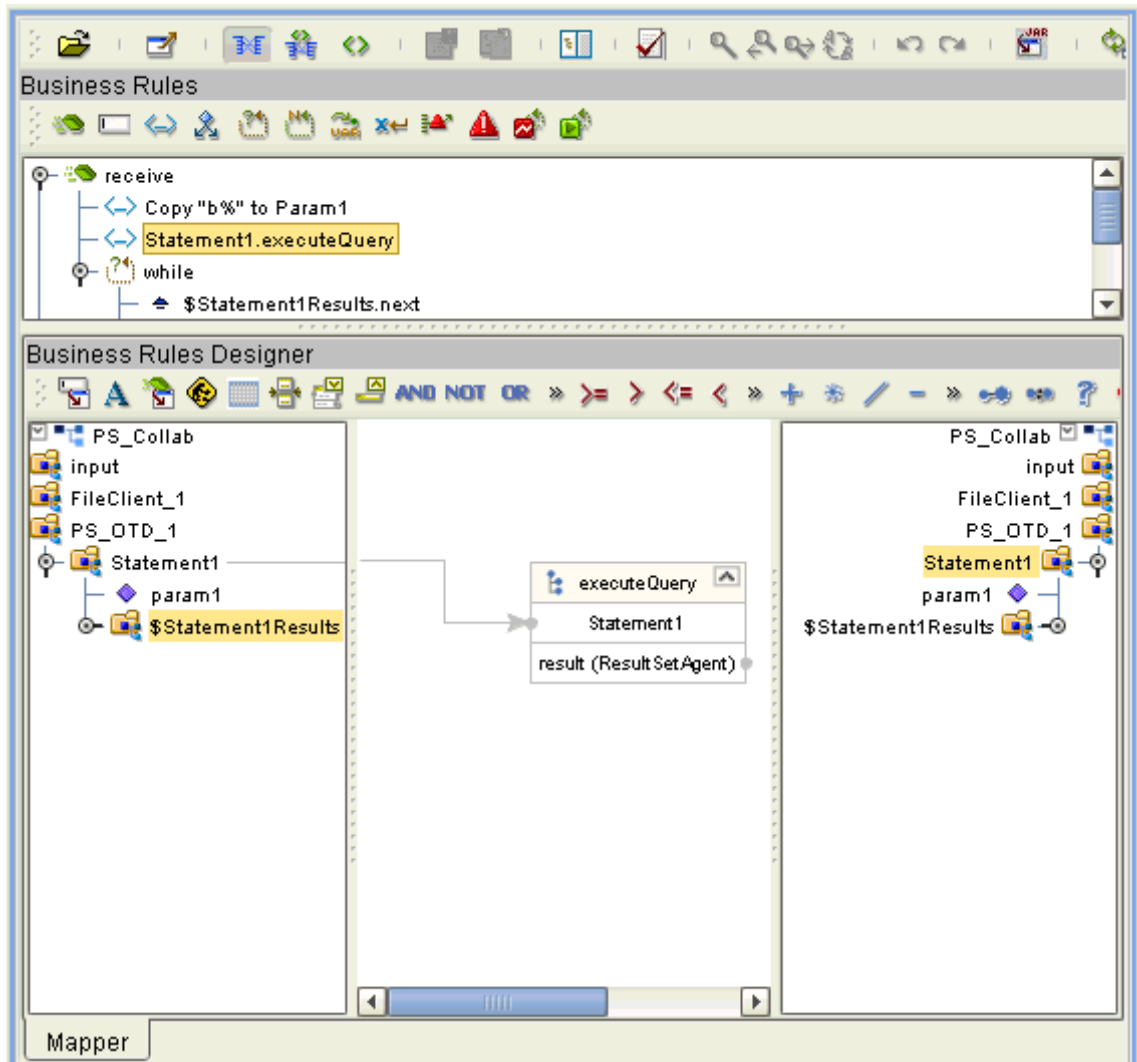
- 3 You can assign a **Literal** value or the input from another OTD to the parameter. In the example shown in Figure 39, the **Literal** value assigned to the parameter is **b%**.

Figure 39 Prepared Statement Collaboration: Assigning a Literal Value



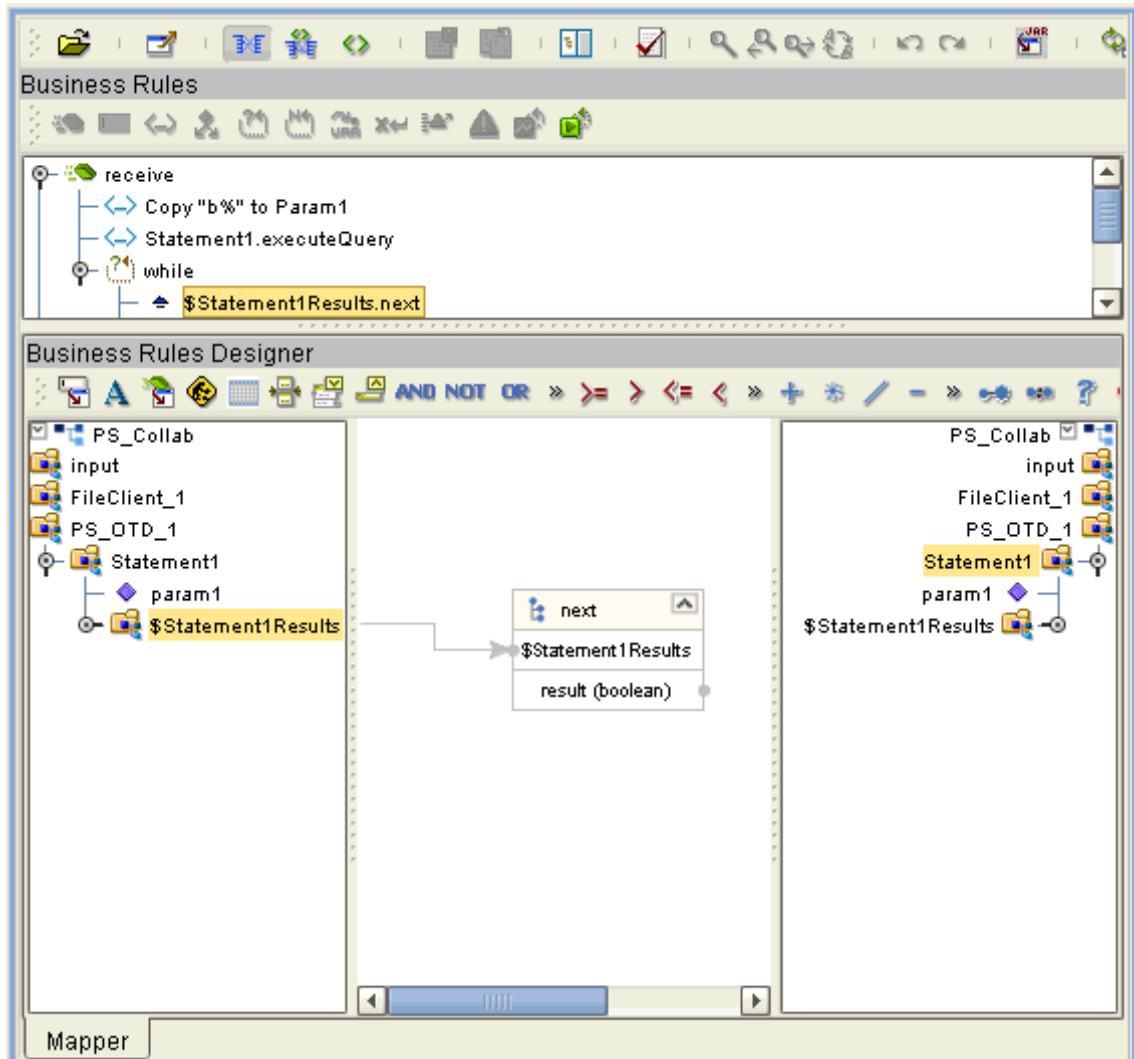
- 4 To run the prepared statement, select the **executeQuery** method from the **Prepared Statement** node. See Figure 40.

Figure 40 Prepared Statement Collaboration: Running the Statement



- 5 To view the result set after the query is finished, create a **while** rule. For the condition, create a **next** method from the result set node (**\$Statement1Results** in the example). See Figure 41.

Figure 41 Prepared Statement Collaboration: Viewing Results



You can continue creating your business logic by adding more Business Rules, if desired.

Using eWay Java Methods

This chapter provides an overview of the Java classes/interfaces and methods contained in the VSAM eWay. These methods are used to extend the functionality of the eWay.

Chapter Topics

- [“VSAM eWay Methods and Classes: Overview” on page 74](#)
- [“eWay Java Classes/Interfaces” on page 75](#)

7.1 VSAM eWay Methods and Classes: Overview

The VSAM eWay exposes various Java methods to add extra functionality to the eWay. These methods make it easier to set information in the VSAM eWay Object Type Definitions (OTDs), as well as get information from them.

7.1.1 Relation to eWay Properties

The nature of this data transfer depends on the properties you set for the eWay in the eGate Enterprise Designer. For more information on the eWay’s properties, see [Chapter 3](#).

7.1.2 VSAM eWay Javadoc

For a complete list of the Java methods within the classes listed in this chapter, refer to the **Javadoc**. You can download the Javadoc while you are installing the eWay. For complete instructions, see the *SeeBeyond ICAN Suite Installation Guide*.

7.2 eWay Java Classes/Interfaces

The VSAM eWay provides the following Java classes/interfaces:

- **VSAMApplicationConnection**: The class that implements the **ApplicationConnection** interface for the database application connection.
- **VSAMApplicationConnectionFactory**: A factory class for creating the VSAM application connection.
- **VSAMCallableStatementAgent**: The agent that hosts a VSAM callable statement.
- **VSAMConnector**: The connector class for the VSAM database eWay.
- **VSAMCPManagedConnectionFactoryExt**: The factory for the VSAM connection pool managed connection.
- **VSAMSession**: The session that hosts a connection interface.
- **VSAMTableResultSet**: The result set to map selected records of a table in VSAM.
- **VSAMXAManagedConnectionFactoryExt**: The factory for VSAM's XA-managed connection.

Index

A

Add Prepared Statements 36

B

Business Process Canvas 44
Business Process Execution Language (BPEL) 47

C

ClassName property 16
Collaboration Editor (Java) 44
Connectivity Map Canvas 44

D

DatabaseName 24
DatabaseName property 21
DataSourceName property 21
Delimiter property 22
Description property 17, 22
driver class, JDBC 16
DriverProperties property 22

E

eInsight Engine and components 47
eInsight interface 8
eInsight with VSAM eWay
 overview 48
 using Business Process canvas 49
eWay components, basic 45
eWay operation, general 6
eWay Properties sheet, using 15
eWay properties, overview 7
eWay with Java Collaborations, overview 52

H

host system requirements 8

I

import sample Project 44

Inbound Environment Properties

Database 24
Password 24
PortNumber 25
ServerName 25
User 25

InitialPoolSize property 17
installation 11
 eXadas DataMapper 10
 overview 9
 sample projects 11
 sar files 11

J

Java methods and classes
 overview 74
Javadoc 11, 74
Javadoc, obtaining 74
JDBC 26
 driver class 16
JDBC connector settings 15, 20

L

Logical Host requirements 8
LoginTimeout property 17

M

MaxIdleTime property 17
MaxPoolSize property 17
MaxStatements property 18
MinPoolSize property 18

N

NetworkProtocol property 18

O

operating systems
 supported 7
OTD Editor 44
OTD wizard, procedures 27
OTD wizard, VSAM 26

P

Participating Host requirements 8
Password 24
Password property 22
PortNumber 25

Index

- PortNumber property 23
- prepared statements, using 69
- Project
 - canvas 44
 - deploying 55
 - External Environment 54
- Project sample
 - components 46
 - importing 44
 - overview 46
- Project sample, BPEL
 - overview 47
- Project sample, Collaboration (Java)
 - overview 52
- properties template 13
- properties, eWay
 - Environment Explorer 20
 - Project Explorer 15
- property
 - ClassName 16
 - DatabaseName 21
 - DataSourceName 21
 - Delimiter 22
 - Description 17, 22
 - DriverProperties 22
 - InitialPoolSize 17
 - LoginTimeOut 17
 - MaxIdleTime 17
 - MaxPoolSize 17
 - MaxStatements 18
 - MinPoolSize 18
 - NetworkProtocol 18
 - Password 22
 - PortNumber 23
 - PropertyCycle 18
 - RoleName 18
 - ServerName 23
 - User 23
- Property settings, Inbound Environment
 - Database 24
 - Password 24
 - PortNumber 25
 - ServerName 25
 - User 25
- PropertyCycle property 18

R

- requirements
 - host system 8
- RoleName property 18

S

- scenarios
 - database look-up 46
- ServerName 25
- ServerName property 23
- setting eWay properties
 - Environment Explorer 14
 - overview 13
 - Project Explorer 13
- supported operating systems 7
- system requirements 7
- system requirements, external 8

U

- User 25
- User property 23
- using VSAM OTDs, overview 57

V

- VSAM eWay overview 7
- VSAM system overview 6