

Oracle Insurance

**Insbridge Rating and
Underwriting
ESI for Java User Guide**

Release 4.1

December 2010

Copyright © 2005, 2010, Oracle and/or its affiliates. All rights reserved.

Oracle Insurance Insbridge Rating and Underwriting ESI for Java User Guide

Release 4.1

Part # E18925-01

Library # E18900-01

December 2010

Primary Authors: Aidi Nui, Mary Elizabeth Wiger

This software and related documentation are provided under a license agreement containing restrictions on use and disclosure and are protected by intellectual property laws. Except as expressly permitted in your license agreement or allowed by law, you may not use, copy, reproduce, translate, broadcast, modify, license, transmit, distribute, exhibit, perform, publish, or display any part, in any form, or by any means. Reverse engineering, disassembly, or decompilation of this software, unless required by law for interoperability, is prohibited.

The information contained herein is subject to change without notice and is not warranted to be error-free. If you find any errors, please report them to us in writing.

If this software or related documentation is delivered to the U.S. Government or anyone licensing it on behalf of the U.S. Government, the following notice is applicable:

U.S. GOVERNMENT RIGHTS

Programs, software, databases, and related documentation and technical data delivered to U.S. Government customers are "commercial computer software" or "commercial technical data" pursuant to the applicable Federal Acquisition Regulation and agency-specific supplemental regulations. As such, the use, duplication, disclosure, modification, and adaptation shall be subject to the restrictions and license terms set forth in the applicable Government contract, and, to the extent applicable by the terms of the Government contract, the additional rights set forth in FAR 52.227-19, Commercial Computer Software License (December 2007). Oracle USA, Inc., 500 Oracle Parkway, Redwood City, CA 94065.

This software is developed for general use in a variety of information management applications. It is not developed or intended for use in any inherently dangerous applications, including applications which may create a risk of personal injury. If you use this software in dangerous applications, then you shall be responsible to take all appropriate fail-safe, backup, redundancy, and other measures to ensure the safe use of this software. Oracle Corporation and its affiliates disclaim any liability for any damages caused by use of this software in dangerous applications.

Oracle is a registered trademark of Oracle Corporation and/or its affiliates. Other names may be trademarks of their respective owners.

This software and documentation may provide access to or information on content, products, and services from third parties. Oracle Corporation and its affiliates are not responsible for and expressly disclaim all warranties of any kind with respect to third-party content, products, and services. Oracle Corporation and its affiliates will not be responsible for any loss, costs, or damages incurred due to your access to or use of third-party content, products, or services.

Where an Oracle offering includes third party content or software, we may be required to include related notices. For information on third party notices and the software and related documentation in connection with which they need to be included, please contact the attorney from the Development and Strategic Initiatives Legal Group that supports the development team for the Oracle offering. Contact information can be found on the Attorney Contact Chart.

The information contained in this document is for informational sharing purposes only and should be considered in your capacity as a customer advisory board member or pursuant to your beta trial agreement only. It is not a commitment to deliver any material, code, or functionality, and should not be relied upon in making purchasing decisions. The development, release, and timing of any features or functionality described in this document remains at the sole discretion of Oracle.

This document in any form, software or printed matter, contains proprietary information that is the exclusive property of Oracle. Your access to and use of this confidential material is subject to the terms and conditions of your Oracle Software License and Service Agreement, which has been executed and with which you agree to comply. This document and information contained herein may not be disclosed, copied, reproduced, or distributed to anyone outside Oracle without prior written consent of Oracle. This document is not part of your license agreement nor can it be incorporated into any contractual agreement with Oracle or its subsidiaries or affiliates.

CONTENTS

	PREFACE	VI
	Audience	vi
	Related Documents	vi
	Conventions	vi
	System Requirements.....	vii
	Manual History	vii
CHAPTER 1		
	INTRODUCTION TO INSBRIDGE EXTENDED SERVICES INTERFACE	8
CHAPTER 2		
	BASE DOMAIN TYPES	10
	Use Case Summary.....	11
CHAPTER 3		
	RATEMANAGER INTERFACE.....	15
	EsiRateManager	15
	EsiRateManager	15
	Environment Items – getAvailableEnvironments, All Non-Secured.....	15
	Environment Items – getAvailableEnvironments, Secured.....	16
	General – createLauchDefinition (Selected Version, Network Login)	16
	General – createLauchDefinition (First Version, Network Login)	16
	General – createLauchDefinition (Selected Version, RateManager Login).....	16
	General – createLauchDefinition (First Version, RateManager Login).....	17
	Global Items – createInput.....	17
	Global Items – updateInput.....	17
	Global Items – deleteInput	17
	Global Items – getInputsArray	18
	Global Items – createCategory	18
	Global Items – createCategory with Inputs.....	18
	Global Items – getCategoryXML.....	18
	Global Items – updateCategory	18
	Global Items – deleteCategory	19
	Program Items – createLine.....	19
	Program Items – updateLine.....	19
	Program Items – deleteLine.....	19
	Program Items – createFolder	19
	Program Items – updateFolder	20
	Program Items – deleteFolder	20
	Program Items – getFoldersXML.....	20

Program Items – createProgram.....	20
Program Items – updateProgram.....	21
Program Items – deleteProgram.....	21
Program Items – createProgramVersion	21
Program Items – copyProgram	21
Program Items – updateProgramVersionLock.....	22
Releases Items – createRelease	22
Releases Items – deleteRelease	22
Releases Items – addReleaseProgram	22
Releases Items – removeReleaseProgram	22
Releases Items – getReleasePrograms	23
Security Items – login.....	23
Security Items – networkLogin.....	23
Security Items – logout	23
Security Items – createUser.....	24
Security Items – updateUser.....	24
Security Items – getUsers	24
Security Items – getUserGroups.....	24
SRP Items – createSRP	24

CHAPTER 4

FRAMEWORK ADMINISTRATOR INTERFACE.....	26
EsiFrameworkAdministrator.....	26
EsiFrameworkAdministrator.....	26
SRP Items – copySRP.....	26
SRP Items – deleteSRP.....	27
SRP Items – exportSRP	27
SRP Items – getSRPList.....	27
SRP Items – getBytesFromFile.....	27
SRP Items – importSRP	28
SRP Items – loadSRP.....	28
SRP Items – moveSRP.....	28
SRP Items – saveFile	28
SRP Items – unloadSRP.....	29

CHAPTER 5

ESI USER SETUP AND AUTHENTICATION.....	30
Adding a User	30

CHAPTER 6

ESI SYSTEM CONFIGURATION	32
--------------------------------	----

SUPPORT

CONTACTING SUPPORT	33
TTY Access to Oracle Support Services	33

INDEX

INDEX 34

LIST OF FIGURES

FIGURE 1 ADDING A NEW USER..... 30
FIGURE 2 USER MANAGEMENT SCREEN..... 31
FIGURE 3 ALLOWING EXTERNAL API ACCESS..... 32

PREFACE

Welcome to the *Oracle Insurance Insbridge Rating and Underwriting ESI for Java Guide*. This guide describes how you can configure and use the Insbridge Extended Services Interface (ESI).

AUDIENCE

This guide is intended for application developers, programmers and others tasked with configuring the ESI interface. Users should be familiar with Java IDE.

RELATED DOCUMENTS

For more information, refer to the following Oracle resources:

- The Oracle Insurance Insbridge Rating and Underwriting RateManager User Guide.
- The Oracle Insurance Insbridge Rating and Underwriting Javadoc File.
- The Oracle Insurance Insbridge Rating and Underwriting Framework Administrator User Guide.
- You can view these guides in-line at this address:

<http://www.oracle.com/technology/documentation/insurance.html>

CONVENTIONS

The following text conventions are used in this document:

Convention	Description
bold	Boldface type indicates graphical user interface elements associated with an action.
<i>italic</i>	Italic type indicates book titles, emphasis, or placeholder variables for which you supply particular values.
<code>monospace</code>	Monospace type indicates commands within a paragraph, URLs, code in examples, text that appears on the screen, or text that you enter.

SYSTEM REQUIREMENTS

For minimum operating system and hardware requirements, please see the Hardware Software requirements guide.

Oracle Insurance recommends the following system requirements for client workstations for optimal performance. Currently, Insbridge ESI only supports US English.

Insbridge ESI Clients:

- Operating System – Windows XP Professional (with service pack 1a or later), or Windows 7
- JDK 6

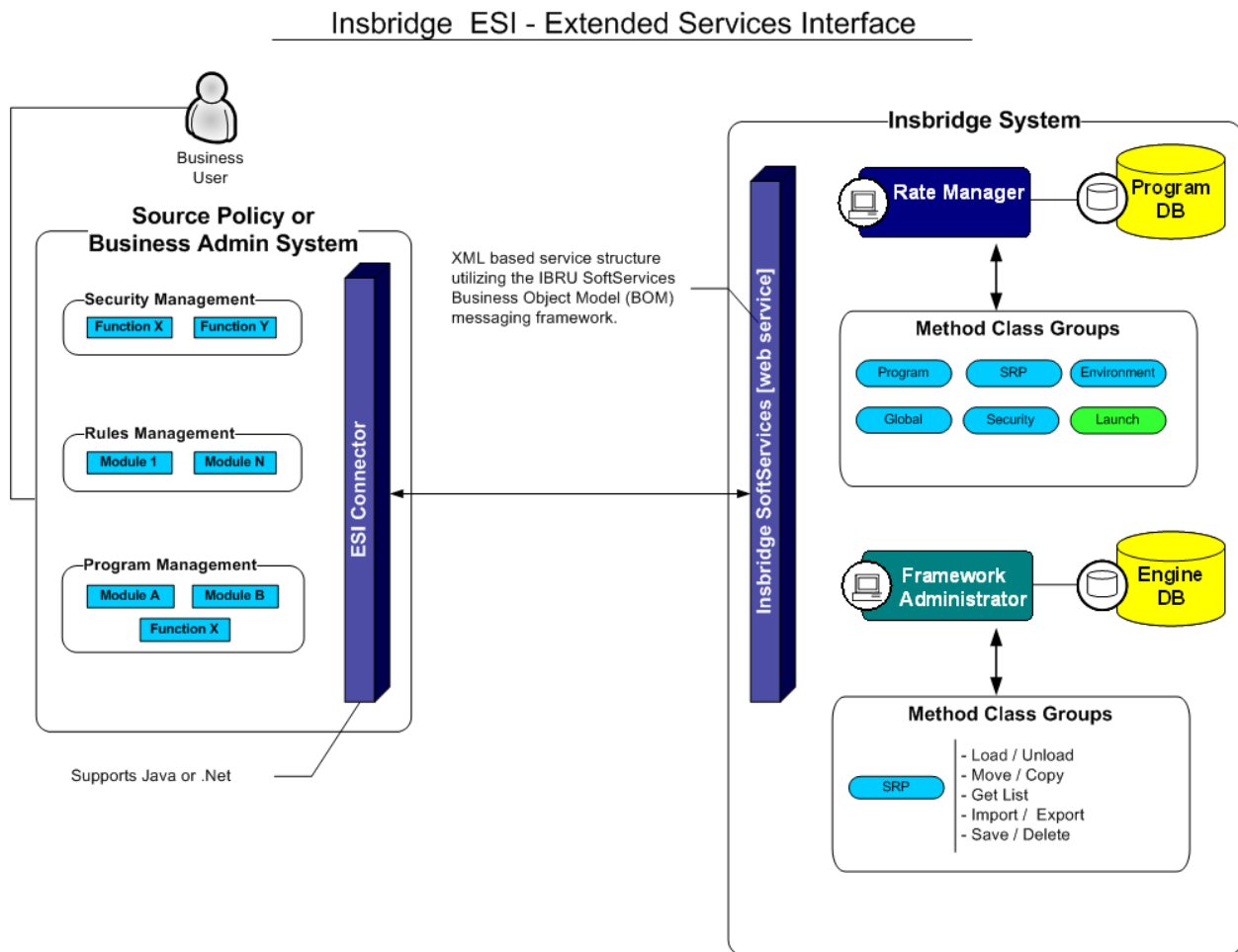
Manual History

New editions incorporate any updates issued since the previous edition.

Edition	Publication Number	Product Version	Publication Date	Comment
1 st Edition	P01-783-01	R 4.1	December 2010	Initial release

INTRODUCTION TO INSBRIDGE EXTENDED SERVICES INTERFACE

Oracle Insurance Insbridge Rating and Underwriting Extended Services Interface (ESI) is a library module designed to provide remote services to the Insbridge Rating and Underwriting (IBRU) business services without directly utilizing the system User Interfaces (UI).



ESI allows users to pass information between a user's source policy or business admin system and the RateManager system or the Insbridge Framework Administrator (IBFA) without using either the RateManager or IBFA UI. ESI itself is not a web service. You will reference it in your applications and **consume it natively**. ESI then calls the web services in RateManager or IBFA. Both RateManager and IBFA have a web service interface that ESI can call.

ESI is designed to operate on Insbridge version 4.01.0 or higher and will connect with:

- Oracle Insurance IBRU RateManager Interface
- Oracle Insurance Framework Administrator Interface

For example, if you had a vendor Policy Administration system and wanted to provide integrated product management through your custom solution; ESI would allow you to model and use the workflow of the IBRU business services and functions but control all the user presentation aspects through your custom product interface.

Rule and Functionality Highlights

- ESI is available on Insbridge Rating and Underwriting version 4.01.0 or higher.
- ESI will be shipped with the IBFA installation. To locate ESI, look under the Insbridge directory for the SDK/ESI/Java file; [INSTALL_DIR]\Insbridge\SDK\ESI\Java. This file will contain two items:
 - InsbridgeEsiServices.jar
 - EsiSwingTester.cmd
 - EsiSwingTester.jar
 - EsiSwingTester Source Code.zip
 - Javadoc.zip
- ESI entries are immediate. There is no lag time or system sync required.
- An ESI cannot be recalled or undone. If an ESI needs to be edited, for example a folder has an incorrect name; you must enter RateManager or IBFA and make the changes there.
- ESI works with the default subline in the folder of your choice for any line of business.
- Unless specifically stated as Optional, all Inputs are **Required**.

NOTE: *For further details, please see the Javadoc file.*

BASE DOMAIN TYPES

Base ESI domain types represent the business nouns with in the Insbridge system. These data structures represent the majority of the business payload.

Please see the Javadoc for details.

USE CASE SUMMARY

The following table is a quick guide to the function available for ESI.

Business Use Case	Methods to Use	Result
General – Open URL		
Create Launch Definition – using a Network login	General – createLauchDefinition (Selected Version, Network Login)	Method will return a URL for a selected program version using a network login.
Create Launch Definition – using a Network login	<u>General – createLauchDefinition (First Version, Network Login)</u>	Method will return a URL for the first program version using a network login.
Create Launch Definition – using a RateManager login	General – createLauchDefinition (Selected Version, RateManager Login)	Method will return a URL for a selected program version using a RateManager login.
Create Launch Definition – using a RateManager login	<u>General – createLauchDefinition (First Version, RateManager Login)</u>	Method will return a URL for the first program version using a RateManager login.
Programs		
Add	Program Items – createProgram	Create a new program.
Add New Version	Program Items – createProgramVersion	Creates a new version of an existing program.
Copy a Program	Program Items – copyProgram	Copies an existing Insbridge program.
Delete	<u>Program Items – deleteProgram</u>	Removes a program.
Update	<u>Program Items – updateProgram</u>	Updates a program.
Update	<u>Program Items – updateProgramVersionLock</u>	Updates a program version lock.

Folder Groups		
Add	<u>Program Items – createFolder</u>	Creates a new folder.
Delete	<u>Program Items – deleteFolder</u>	Removes a folder.
List Folders	<u>Program Items – getFoldersXML</u>	Returns an XML string of all available folders in an LOB.
Update	<u>Program Items – updateFolder</u>	Updates the name or location of a folder.
Line of Business		
Add	<u>Program Items – createLine</u>	Creates a new Line.
Delete	<u>Program Items – deleteLine</u>	Removes an Line.
Update	<u>Program Items – updateLine</u>	Updates an Line.
SRP – RateManager		
Add	SRP Items – createSRP	Creates an SRP and returns the SRP object.
Global Items		
Add	<u>Global Items – createInput</u>	Creates a new input.
Add	<u>Global Items – createCategory</u>	Creates a new category.
Add	<u>Global Items – createCategory with Inputs</u>	Creates a new category with inputs.
Delete	<u>Global Items – deleteInput</u>	Removes an input.
Delete	<u>Global Items – deleteCategory</u>	Removes a category.
Updates	<u>Global Items – updateInput</u>	Updates a category.
Updates	<u>Global Items – updateCategory</u>	Updates an input.
List Inputs	<u>Global Items – getInputsArray</u>	Returns an array of all inputs in a Line.
List Inputs	<u>Global Items – getCategoryXML</u>	Returns an XML string of all categories in a Line.
Security Items		
Add	<u>Security Items – createUser</u>	Creates a new user.
List	<u>Security Items – getUsers</u>	Returns a list of all available users for the subscriber.
List	<u>Security Items – getUserGroups</u>	Returns a list of all available user groups.
Login	<u>Security Items – login</u>	Logs in the user.

Login	<u>Security Items – networkLogin</u>	Logs in the user with network login.
Logout	<u>Security Items – logout</u>	Logs out the user.
Update	<u>Security Items – updateUser</u>	Updates a user's information.
Environment Items		
List	<u>Environment Items – getAvailableEnvironments, All Non-Secured</u>	Returns a list of all available non-secured environments.
List	<u>Environment Items – getAvailableEnvironments, Secured</u>	Returns a list of all available environments within a selected environment type.
Releases		
Add	<u>Releases Items – createRelease</u>	Creates a new release.
Delete	<u>Releases Items – deleteRelease</u>	Removes a release.
List	<u>Releases Items – getReleasePrograms</u>	Returns a list of all programs in release.
Update	<u>Releases Items – addReleaseProgram</u>	Add a program version to a release.
Delete	<u>Releases Items – removeReleaseProgram</u>	Removes a program from the release.

Business Use Case	Methods to Use	Result
SRP– IBFA		
Copy	<u>SRP Items – copySRP</u>	Copies an SRP from the current environment into a selected environment.
Delete	<u>SRP Items – deleteSRP</u>	Deletes an SRP from the disk.
Export	<u>SRP Items – exportSRP</u>	Exports an SRP from IBFA and converts it to bytes.
Import	<u>SRP Items – importSRP</u>	Imports SRP bytes into an IBFA environment.
List	<u>SRP Items – getSRPList</u>	Returns a list of all SRPs in a select environment.
List	<u>SRP Items – getBytesFromFile</u>	Returns the bytes from a file.
Load	<u>SRP Items – loadSRP</u>	Loads an SRP into an IBFA environment.
Move	<u>SRP Items – moveSRP</u>	Moves an SRP from the current environment to the passed environment
Save	<u>SRP Items – saveFile</u>	Saves the bytes you pass into a physical file.
Unload	<u>SRP Items – unloadSRP</u>	Unloads an SRP from a selected environment.

RATEMANAGER INTERFACE

Constructor Detail

EsiRateManager

```
public EsiRateManager(int aSubscriber)
    throws java.lang.Exception
```

Constructor for EsiRateManager using LOCALHOST as the target server

Parameters:

aSubscriber - the licensed subscriber ID

Throws:

java.lang.Exception

EsiRateManager

```
public EsiRateManager(int aSubscriber,
    java.lang.String aTargetServer)
    throws java.lang.Exception
```

Constructor for EsiRateManager

Parameters:

aSubscriber - the licensed subscriber ID

aTargetServer - target server name or IP address

Throws:

java.lang.Exception

Environment Items – getAvailableEnvironments, All Non-Secured

Business Functionality

- Gets all the available non-secured environments.
- This ESI interfaces provides the ability for an external system to programmatically retrieve meta-data about all the available non-secured Environments in order for the system to programmatically invoke the other ESI deployment related API's.

Inputs

- No inputs

Outputs

- List of all non-secured EsiEnvironment objects.

Environment Items – getAvailableEnvironments, Secured

Business Functionality

- Gets all the available environments for a particular environment type.
- This ESI interfaces provides the ability for an external system to programmatically retrieve meta-data about the available Environments in order for the system to programmatically invoke the other ESI deployment related API's and pass in the correct environment data object.

Inputs

- aType – the environment type
- isIncludeSecure – Include Secured or Not

Outputs

- List of ESISEnvironment objects.

General – createLauchDefinition (Selected Version, Network Login)

Business Functionality

- Method creates a URL of an existing program version. This method uses the Network login for authentication. Requires custom authentication setup in RateManager Security. See Authentication.

Inputs

- aLine – Line ID
- aProgram – Program ID
- aProgramVersion – Program Version

Outputs

- Returns a URL string to launch a Program.

General – createLauchDefinition (First Version, Network Login)

Business Functionality

- Method creates a URL of the first program version. This method uses the Network login for authentication. Requires custom authentication setup in RateManager Security. See Authentication.

Inputs

- aLine – Line ID
- aProgram – Program ID

Outputs

- Returns a URL string to launch a Program.

General – createLauchDefinition (Selected Version, RateManager Login)

Business Functionality

- Method creates a URL of an existing program version. This method uses the standard RateManager login for authentication.

Inputs

- aUser – non-network user ID
- aLine – Line ID

- aProgram – Program ID
- aProgramVersion – Program Version

Outputs

- Returns a URL string to launch a Program.

General – createLaunchDefinition (First Version, RateManager Login)

Business Functionality

- Method creates a URL of the first program version. This method uses the standard RateManager login for authentication.

Inputs

- aUser – non-network user ID
- aLine – Line ID
- aProgram – Program ID

Outputs

- Returns a URL string to launch a Program.

Global Items – createInput

Business Functionality

- Creates a new global level input in a particular Line.

Inputs

- EsilInput

Outputs

- Returns the ID of the newly created Input if succeeded or exception if failed.

Global Items – updateInput

Business Functionality

- Updates a global level input in a particular Line.

Inputs

- EsilInput

Outputs

- True if successful or false if failed.

Global Items – deleteInput

Business Functionality

- Deletes a global level input in a particular Line.

Inputs

- EsilInput

Outputs

- True if successful or false if failed.

Global Items – getInputsArray

Business Functionality

- Lists all the inputs of a particular Line.

Inputs

- EsiInput

Outputs

- Returns an array of EsiInputs that includes all the inputs of that Line.

Global Items – createCategory

Business Functionality

- Creates a category in a particular Line.

Inputs

- EsiCreateCategory

Outputs

- Returns the ID of the newly created Category if succeeded or exception if failed.

Global Items – createCategory with Inputs

Business Functionality

- Creates a category with inputs in a particular Line.

Inputs

- EsiCategory
- List of EsiInput objects

Outputs

- No outputs.

Global Items – getCategoryXML

Business Functionality

- Gets an XML string of all the categories in a particular Line.

Inputs

- getCategoryXML

Outputs

- Return an XML string.

Global Items – updateCategory

Business Functionality

- Updates a category in a particular Line.

Inputs

- EsiCategory

Outputs

- True if successful exception if failed.

Global Items – deleteCategory

Business Functionality

- Deletes a category in a particular Line.

Inputs

- EsiCategory

Outputs

- True if successful exception if failed.

Program Items – createLine

Business Functionality

- Creates a new line of business. The line of business, if activated, will be displayed on the RateManager navigation bar immediately. In order for any users to use the new line, groups must have access privileges granted.

Inputs

- EsiLine

Outputs

- Returns the ID of the newly created Line if succeeded or -1 if failed.

Program Items – updateLine

Business Functionality

- Updates a line of business.

Inputs

- EsiLine

Outputs

- True if successful or exception if failed.

Program Items – deleteLine

Business Functionality

- Deletes a line of business.

Inputs

- EsiLine

Outputs

- True if successful or exception if failed.

Program Items – createFolder

Business Functionality

- Creates a new folder in a particular Line.

Inputs

- EsiFolder

Outputs

- Returns an EsiFolder object.

Program Items – updateFolder

Business Functionality

- Updates the name or parent of an existing program folder. When you change the parent of any folder, the folders underneath will be changed as well.

Inputs

- EsiFolder

Outputs

- Returns the updated Folder ID if succeeded or exception if failed.

Program Items – deleteFolder

Business Functionality

- Deletes an existing program folder. Make absolutely sure that the programs for the folder are no longer needed. Deleting a folder deletes all programs under that folder only. Subfolders and any programs in the subfolders will not be deleted but will now be unlinked.

Inputs

- EsiFolder

Outputs

- Returns True if succeeded or exception if failed.

Program Items – getFoldersXML

Business Functionality

- Gets an XML string of available Folders of a particular Line.

Inputs

- getFoldersXML

Outputs

- Returns an XML string of available Folders of a specific Line.

Program Items – createProgram

Business Functionality

- Creates a new Insbridge Program in the folder of your choosing.

Inputs

- EsiProgram

Outputs

- EsiProgram object.

Program Items – updateProgram

Business Functionality

- Updates a Program in the folder of your choosing.

Inputs

- EsiProgram

Outputs

- True if successful or exception if failed.

Program Items – deleteProgram

Business Functionality

- Deletes an existing Insbridge Program. When a program is deleted, all data (variables, algorithms, sequencing, result groups and, if an auto program, driver assignment scenarios) and versions are deleted. Make sure this is the action you want to take. Locked programs cannot be deleted and will return a fail.

Inputs

- EsiProgram

Outputs

- True if successful or exception if failed.

Program Items – createProgramVersion

Business Functionality

- Creates a new version of an existing program.

Inputs

- EsiProgramVersion

Outputs

- Returns an EsiProgramVersion object.

Program Items – copyProgram

Business Functionality

- Copies an existing Insbridge program version to a new specified program version with the option to copy the definition only or copy the definition and all data.
 - **Copy Definitions Only:** This option will copy all elements of the program with the exception of the data contained in mapped variables.
 - **Copy Definitions & All Data:** This option will copy all elements of the program, including the data contained in mapped variables.

Inputs

- New Program Version
- Source Program Version
- Copy Option

Outputs

- Returns an EsiProgram object.

Program Items – updateProgramVersionLock

Business Functionality

- Locks or unlocks a program version.

Inputs

- EsiProgramVersion
- aLockOption

Outputs

- True if successful or exception if failed.

Releases Items – createRelease

Business Functionality

- Creates a new Release.

Inputs

- aReleaseName – the release name
- aReleaseDescription – the release description
- aReleaseNotes – The release notes
- aAdminEmail – the release admin email
- aTargetEnvironment – the environment

Outputs

- EsiRelease object.

Releases Items – deleteRelease

Business Functionality

- Deletes an existing release.

Inputs

- aTargetRelease – the release being deleted

Outputs

- True if successful or exception if failed.

Releases Items – addReleaseProgram

Business Functionality

- Add a program version to a Release.

Inputs

- aTargetRelease – the release the program version is being added to
- aTargetProgramVersion – the program version that is being added

Outputs

- True if successful or exception if failed.

Releases Items – removeReleaseProgram

Business Functionality

- Removes a program version from a Release.

Inputs

- aTargetRelease – the release the program version is being removed from
- aTargetProgramVersion – the program version that is being removed

Outputs

- True if successful or exception if failed.

Releases Items – getReleasePrograms

Business Functionality

- Lists the programs in a Release.

Inputs

- aTargetRelease – the EsiRelease object being retrieved

Outputs

- The EsiRelease object including the programs contained.

Security Items – login

Business Functionality

- Logs a User in to the RateManager System.

Inputs

- none

Outputs

- none

Security Items – networkLogin

Business Functionality

- Logs a User in to the RateManager System using a Windows login.

Inputs

- none

Outputs

- none

Security Items – logout

Business Functionality

- Logs a User out of the RateManager System.

Inputs

- none

Outputs

- none

Security Items – createUser

Business Functionality

- Creates a new User.

Inputs

- EsiUser

Outputs

- Returns new user ID if successful or exception if failed.

Security Items – updateUser

Business Functionality

- Updates an existing User. Password Reset must be done inside RM.

Inputs

- EsiUse

Outputs

- Returns True if succeeded or False if failed.

Security Items – getUsers

Business Functionality

- Gets a list of all the available users for the subscriber.

Inputs

- No inputs

Outputs

- Returns a list of EsiUsers.

Security Items – getUserGroups

Business Functionality

- Gets all the available user groups.

Inputs

- No inputs

Outputs

- Returns a list of EsiUserGroup.

SRP Items – createSRP

Business Functionality

- Creates a SoftRater Package (SRP) in a particular environment.
- ESI created SRP will have an identifier “API” in the filename and will show an icon on IBFA SRP list.

Inputs

- aTargetProgram – the program the SRP to be created on
- aProgram Version – the program version the SRP to be created on

- aTargetEnvironmnet – the environment the SRP to be created on

Outputs

- Returns the newly created EsiSRP object.

FRAMEWORK ADMINISTRATOR INTERFACE

Constructor Detail

EsiFrameworkAdministrator

```
public EsiFrameworkAdministrator(java.lang.String aApplicationTokenKey,  
                                int aSubscriber)  
    throws java.lang.Exception
```

Constructor for FrameworkAdministrator using LOCALHOST as the target server

Parameters:

aApplicationTokenKey - the Secure token to validate ESI session
aSubscriber - the Licenced Subscriber ID

Throws:

java.lang.Exception

EsiFrameworkAdministrator

```
public EsiFrameworkAdministrator(java.lang.String aApplicationTokenKey,  
                                int aSubscriber,  
                                java.lang.String aTargetServer)  
    throws java.lang.Exception
```

FrameworkAdministrator Constructor

Parameters:

aApplicationTokenKey - the Secure token to validate ESI session
aSubscriber - the Licenced Subscriber ID
aTargetServer - the Target server name or IP address

Throws:

java.lang.Exception

SRP Items – copySRP

Business Functionality

- o Copies an SRP from the current environment to the selected environment. To determine the current environment, run the GetSRPList. This will return a list of Esi_SRP's. Every Esi_SRP has the environment and other information. CopySRP will get the current environment from the Esi_SRP object that you pass in.

Inputs

- aTargetEnvironment – The environment the SRP to be copied to.
- aTargetSRP – The SRP to be copied.

Outputs

- True if succeeded or exception if failed.

SRP Items – deleteSRP

Business Functionality

- Deletes an SRP from disk. To determine (or control) the environment that the SRP is deleted from, run the GetSRPList to get the Esi_SRP's. Every Esi_SRP has the environment and other information. This will tell you which environment the SRP is currently in.
- Once deleted, this package cannot be reloaded.

Inputs

- aTargetSRP – The SRP to be deleted

Outputs

- True if succeeded or exception if failed

SRP Items – exportSRP

Business Functionality

- Exports an SRP from an IBFA environment and converts it to bytes.
- You can use the bytes directly or save them to a physical file by using SaveFile() method.
- To use the SRP bytes, use a straight binary read into a byte array.

```
FileStream fs = File.OpenRead(@"C:\TEMP\abc.srp");  
byte[] srpBytes = new byte[fs.Length];  
fs.Read(srpBytes, 0, srpBytes.Length);
```

Inputs

- aTargetSRP – The SRP to be exported

Outputs

- The bytes of the SRP

SRP Items – getSRPList

Business Functionality

- Gets a list of all SRPs in a particular environment.

Inputs

- aTargetEnvironment – The environment from where the SRPs are to be retrieved.
- aSRPType – theSRP type, 0=all SRPs; 1=ESI created SRPs

Outputs

- A list of EsiSRP objects.

SRP Items – getBytesFromFile

Business Functionality

- Gets the bytes from the file you pass in.

Inputs

- aFile – the file to get bytes from.

Outputs

- The bytes of the file.

SRP Items – importSRP

Business Functionality

- Imports SRP bytes into an IBFA environment.

Inputs

- aTargetEnvironment – The environment the SRP is to be imported into
- aSRPBytes – The SRP bytes to be imported

Outputs

- True if succeeded or exception if failed

SRP Items – loadSRP

Business Functionality

- Loads an SRP into an IBFA environment so that the rating algorithms can be executed against it.
- Loading a package takes the logic stored in the package and places it in the database so it can be executed.
- Packages should be able to be loaded within an ESI Environment.

Inputs

- aTargetEnvironment – The environment the SRP is to be loaded in.
- aTargetSRP – The SRP to be loaded.

Outputs

- True if succeeded or exception if failed.

SRP Items – moveSRP

Business Functionality

- Given an Esi_SRP object as well as an ESI Environment, the API moves the SRP from the current environment to the passed-in environment.

Inputs

- aTargetEnvironment – The environment the SRP is to be moved to.
- aTargetSRP – The SRP to be moved.

Outputs

- True if succeeded or exception if failed.

SRP Items – saveFile

Business Functionality

- Saves the bytes you pass in to a physical file.

Inputs

- aData – The bytes to be saved
- aPath – The location and name the bytes are to be saved

Outputs

- True if succeeded or exception if failed

SRP Items – unloadSRP

Business Functionality

- Unloads an SRP from a particular Environment. To determine (or control) the environment that the SRP is unloaded from, run the GetSRPList to get the Esi_SRP's. Every Esi_SRP has the environment and other information. This will tell you which environment the SRP is currently in.
- The package itself remains on disk until deleted. It is not necessary to unload a package before loading another package for the same program and version.
- If a package is loaded for a program and version that already has a package loaded, the old package will be unloaded before the new package is loaded.

Inputs

- aTargetSRP – The SRP to be unloaded.

Outputs

- True if succeed or exception if failed.

ESI USER SETUP AND AUTHENTICATION

There are two types of authentication in ESI RateManager Interface:

- **Regular login** – users will send down a valid RateManager username and ESI will log the user in with that.
- **Network login** – ESI will get your windows credentials and log you in with the same username and password as the user you login to windows

You will need to set up a network user account if you want to use windows integrated login in RateManager.

Adding a User

New users can be added from the User Management screen. All new users will be assigned the default password, password. New users should log in as soon as possible and change their password.

To Add a New User

1. In RateManager, Tools→Security→**User Management**.

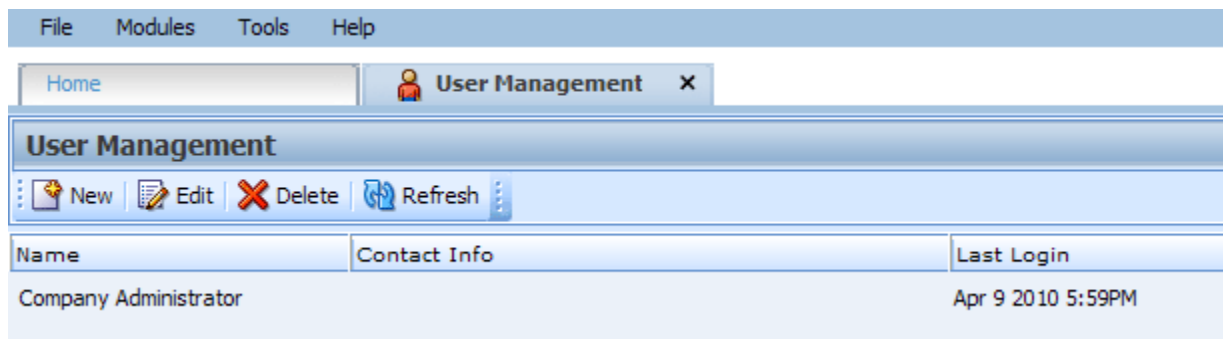


Figure 1 Adding a New User

2. Click **NEW** to open the Add User screen.

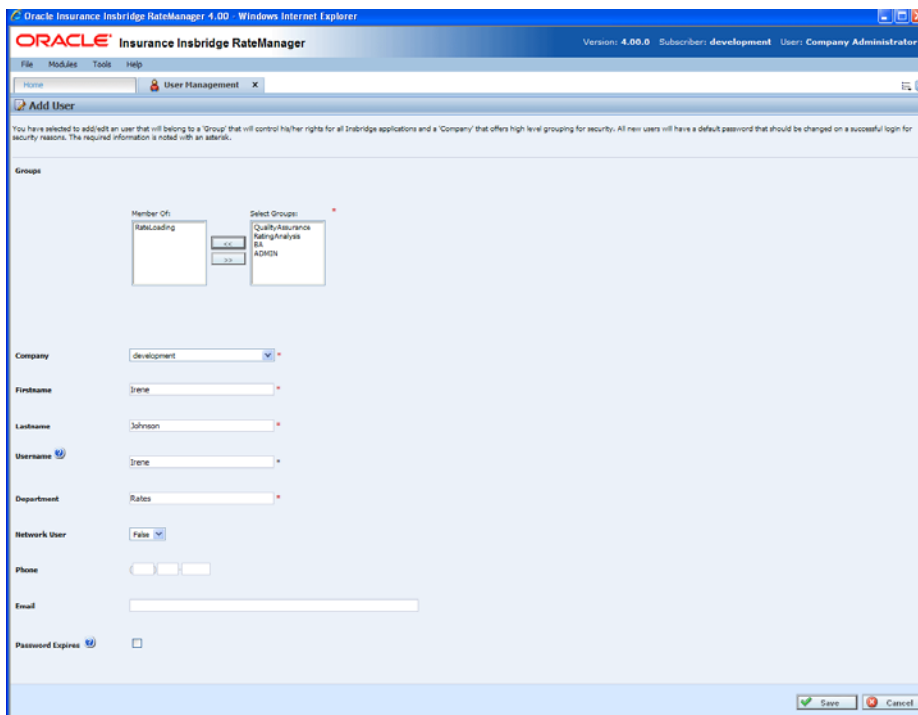
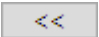


Figure 2 User Management Screen

3. Select the **Group(s)** the new user will belong to by selecting a group or groups from the Select Groups list and then clicking the  button.
4. Select the **Company** the user will belong to from the drop down listing.
5. Enter a **First** and **Last** name for the user in the appropriate text boxes.
6. Enter a **Username** for the new user. The username must be at least six, but fewer than twelve, alphanumeric characters and can include an underscore (–) or period (.).
7. Enter a **Department** for the user.
8. Select whether the new user is a **Network User** by selecting **True** or **False** from the drop down. If you select **True**, the user's credentials (username and password) will be validated using Windows Authentication Tokens. The username must match the network user ID. If you select **False**, the user must enter a valid username and password via the RateManager login screen.
9. Optionally, enter a **Phone Number** and **Email Address** for the new user.
10. If you want the user's password to expire, click the box next to **Password Expires**. The Preferences screen will contain the number of days required for a password change.
11. When you are finished, click **SAVE**. The user will be added to the system and the user list will be updated. The new user can now log in using the username you assigned them and the default password, **password**.
12. The user should change their password the first time they log in. See Changing Your Password for more information.

ESI SYSTEM CONFIGURATION

To use ESI's IBFA Framework functionality, you need to send down the API key when you do the ESI API call.

When IBFA is installed, a default API key will be generated and saved in IBFA. You can find it in *IBFA* → *Insbridge* → *Security* → *External API Access*. You can disable ESI's IBFA functionality by setting it to "Disabled". For security purpose, you may want to change the key once in a while. To change the key, click on "Generate Key" and then click on "Update". Every key generated will be unique.

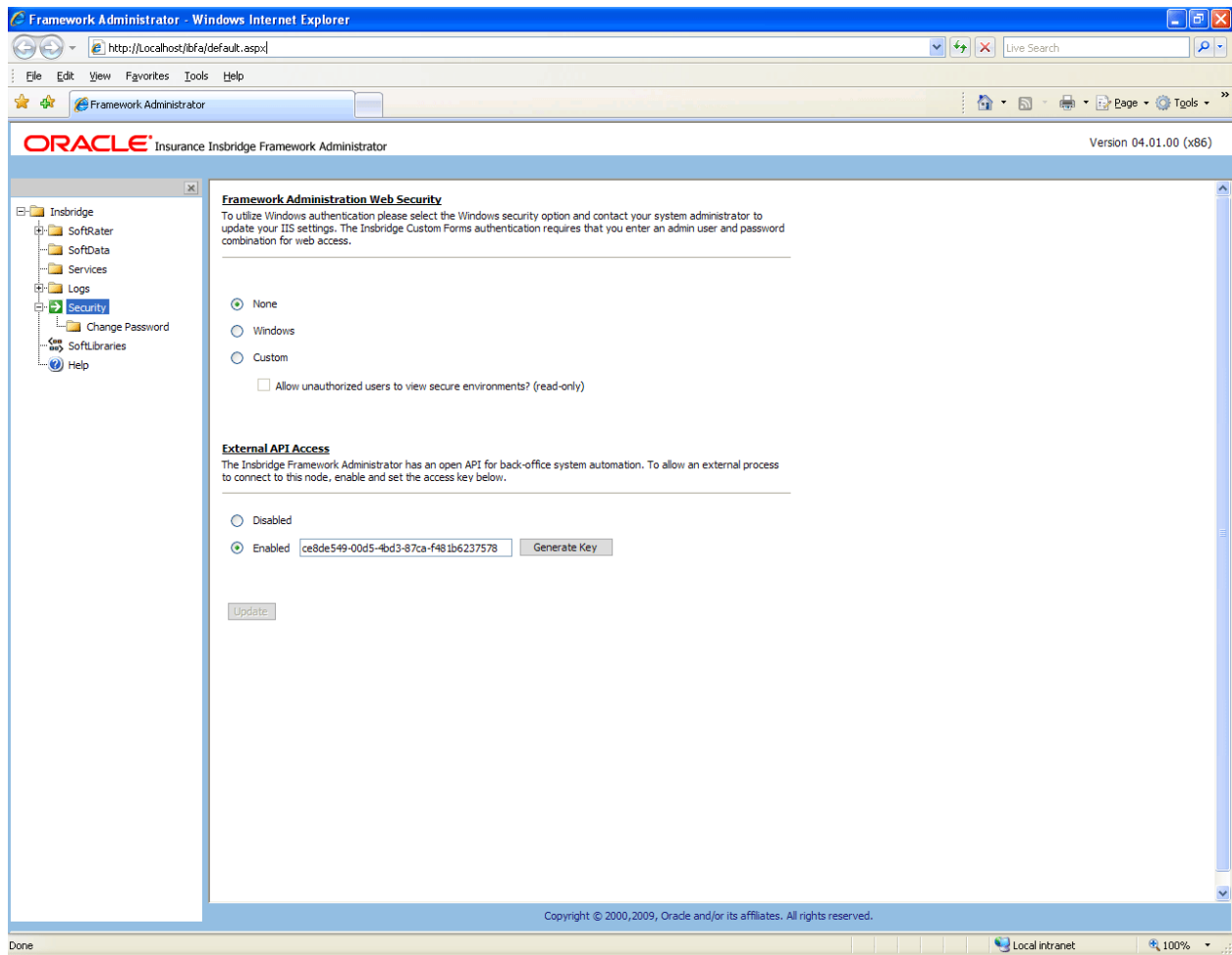


Figure 3 Allowing External API Access

CONTACTING SUPPORT

If you need assistance with an Oracle Insurance Insbridge Rating and Underwriting System product, please log a Service Request using My Oracle Support at <https://support.oracle.com/>.

Address any additional inquiries to:

Oracle Corporation
World Headquarters
500 Oracle Parkway
Redwood Shores, CA 94065
U.S.A.

Worldwide Inquiries:
Phone: +1.650.506.7000
Fax: +1.650.506.7200
oracle.com

TTY ACCESS TO ORACLE SUPPORT SERVICES

Oracle provides dedicated Text Telephone (TTY) access to Oracle Support Services within the United States of America 24 hours a day, seven days a week. For TTY support, call 800.446.2398.

INDEX

A

- Adding
 - New User in User Management, 30
- API Key, 32
- Authentication
 - ESI User, 30

B

- Base ESI Domain Types, 10
- Business Use Case, 11

C

- Category
 - Create, 18
 - Create with Inputs, 18
 - Delete, 19
 - Get, XML, 18
 - Update, 18
- Class Definition
 - IBFA, 26
 - RateManager Interface, 15
- Company
 - Selecting for New User, 31
- Copy Definitions & All Data
 - Copying Programs, 21
- Copy Definitions Only
 - Copying Programs, 21
- Copy Program, 21
- Copy SRP, 26
- Create
 - Network Login, 30
- Create Category, 18
 - With Inputs, 18
- Create Folders, 19
- Create Input, 17
- Create Line, 19
- Create New User, 24
- Create Program, 20
- Create Program Version, 21
- Create Release, 22
- Create SRP, 24

D

- Default
 - API Key, 32
- Delete Category, 19
- Delete Folder, 20
- Delete Line, 19
- Delete Program, 21
- Delete Release, 22

- Delete SRP, 27
- Deletes Input, 17

E

- Edition Notice, 2
- Environments
 - Get Available, Non-Secured, 15
 - Get Available, Secured, 16
- ESI
 - Overview, 8
 - Rules, 9
- ESI Domain Types, 10
- Example
 - Business Use Case, 11
- Export SRP, 27

F

- False
 - New Users, 31
- Folder
 - Create, 19
 - Delete, 20
 - Get XML, 20
 - Update, 20

G

- Get
 - User Groups, 24
- Get Available
 - Environments, Non-Secured, 15
 - Environments, Secured, 16
 - User Groups, 24
- Get Bytes From File, 27
- Get Category XML, 18
- Get Folders XML, 20
- Get Inputs Array, 18
- Get SRP List, 27
- Group
 - Selecting for New User, 31

I

- IBFA
 - Class Definition, 26
 - System Configuration, 32
- Import SRP, 28
- Inputs
 - Create New, 17
 - Delete, 17
 - Get, Array, 18
 - Update, 17

L

Launch Definition
 First Version, 16, 17
 Selected Version, 16

Line

 Create, 19
 Delete, 19
 Program, 21
 Update, 19

List Release, 23

Load SRP, 28

login, 23

logout, 23

M

Move SRP, 28

N

Network Login
 ESI Authentication, 30

Network User
 Selecting for New User, 31

networkLogin, 23

New User in User Management
 Adding, 30

O

Overview
 ESI, 8

P

Password
 Default, 30

Password Expires
 Web Config File, 31

Program

 Copy, 21
 Copy Definitions & All Data, 21
 Copy Definitions Only, 21
 Create, 20
 Create New Version, 21
 Update, 21
 Update Version Lock, 22

R

RateManager Login
 Create Launch First Version, 16, 17
 Create Launch Selected Version, 16
 ESI Authentication, 30

Release

 Create, 22
 Delete, 22
 Delete Program, 22
 List Program, 23
 Update, 22

Rules

 ESI, 9
 Username, 31

S

Save File SRP, 28

SRP

 Copy, 26
 Create, 24
 Delete, 27
 Export, 27
 Get Bytes from File, 27
 Get List, 27
 Import, 28
 Load, 28
 Move, 28
 Save File, 28
 Unload, 29

System Configuration

 IBFA, 32

System Requirements, vii

T

True

 New Users, 31

U

Unload SRP, 29

Update Category, 18

Update Folder, 20

Update Input, 17

Update Line, 19

Update Program, 21

Update Program Version Lock, 22

Update Release, 22

Update User, 24

User

 Create New, 24
 Login, 23
 Logout, 23
 Network Login, 23
 Selecting Company for New, 31
 Selecting Group for New, 31
 Selecting Network User for New, 31
 Selecting Username for New, 31
 Update, 24

User Authentication, 31

User Groups

 Get, 24
 Get Available, 24

Username

 Rules, 31
 Selecting for New User, 31

W

Web Config File

 Password Expires, 31