



Sun™ Management Center 3.0 Software Supplement for Netra™ Servers

Sun Microsystems, Inc.
4150 Network Circle
Santa Clara, CA 95054 U.S.A.
650-960-1300

Part No. 817-0012-10
October 2002, [Revision A](#)

Send comments about this document to: docfeedback@sun.com

Copyright 2002 Sun Microsystems, Inc., 4150 Network Circle, Santa Clara, California 95054, U.S.A. All rights reserved.

Sun Microsystems, Inc. has intellectual property rights relating to technology embodied in the product that is described in this document. In particular, and without limitation, these intellectual property rights may include one or more of the U.S. patents listed at <http://www.sun.com/patents> and one or more additional patents or pending patent applications in the U.S. and in other countries.

This document and the product to which it pertains are distributed under licenses restricting their use, copying, distribution, and decompilation. No part of the product or of this document may be reproduced in any form by any means without prior written authorization of Sun and its licensors, if any.

Third-party software, including font technology, is copyrighted and licensed from Sun suppliers.

Parts of the product may be derived from Berkeley BSD systems, licensed from the University of California. UNIX is a registered trademark in the U.S. and in other countries, exclusively licensed through X/Open Company, Ltd.

Sun, Sun Microsystems, the Sun logo, AnswerBook2, docs.sun.com, and Solaris are trademarks or registered trademarks of Sun Microsystems, Inc. in the U.S. and in other countries.

All SPARC trademarks are used under license and are trademarks or registered trademarks of SPARC International, Inc. in the U.S. and in other countries. Products bearing SPARC trademarks are based upon an architecture developed by Sun Microsystems, Inc.

The OPEN LOOK and Sun™ Graphical User Interface was developed by Sun Microsystems, Inc. for its users and licensees. Sun acknowledges the pioneering efforts of Xerox in researching and developing the concept of visual or graphical user interfaces for the computer industry. Sun holds a non-exclusive license from Xerox to the Xerox Graphical User Interface, which license also covers Sun's licensees who implement OPEN LOOK GUIs and otherwise comply with Sun's written license agreements.

Use, duplication, or disclosure by the U.S. Government is subject to restrictions set forth in the Sun Microsystems, Inc. license agreements and as provided in DFARS 227.7202-1(a) and 227.7202-3(a) (1995), DFARS 252.227-7013(c)(1)(ii) (Oct. 1998), FAR 12.212(a) (1995), FAR 52.227-19, or FAR 52.227-14 (ALT III), as applicable.

DOCUMENTATION IS PROVIDED "AS IS" AND ALL EXPRESS OR IMPLIED CONDITIONS, REPRESENTATIONS AND WARRANTIES, INCLUDING ANY IMPLIED WARRANTY OF MERCHANTABILITY, FITNESS FOR A PARTICULAR PURPOSE OR NON-INFRINGEMENT, ARE DISCLAIMED, EXCEPT TO THE EXTENT THAT SUCH DISCLAIMERS ARE HELD TO BE LEGALLY INVALID.

Copyright 2002 Sun Microsystems, Inc., 4150 Network Circle, Santa Clara, California 95054, Etats-Unis. Tous droits réservés.

Sun Microsystems, Inc. a les droits de propriété intellectuelle relatant à la technologie incorporée dans le produit qui est décrit dans ce document. En particulier, et sans la limitation, ces droits de propriété intellectuelle peuvent inclure un ou plus des brevets américains énumérés à <http://www.sun.com/patents> et un ou les brevets plus supplémentaires ou les applications de brevet en attente dans les Etats-Unis et dans les autres pays.

Ce produit ou document est protégé par un copyright et distribué avec des licences qui en restreignent l'utilisation, la copie, la distribution, et la décompilation. Aucune partie de ce produit ou document ne peut être reproduite sous aucune forme, par quelque moyen que ce soit, sans l'autorisation préalable et écrite de Sun et de ses bailleurs de licence, s'il y en a.

Le logiciel détenu par des tiers, et qui comprend la technologie relative aux polices de caractères, est protégé par un copyright et licencié par des fournisseurs de Sun.

Des parties de ce produit pourront être dérivées des systèmes Berkeley BSD licenciés par l'Université de Californie. UNIX est une marque déposée aux Etats-Unis et dans d'autres pays et licenciée exclusivement par X/Open Company, Ltd.

Sun, Sun Microsystems, le logo Sun, AnswerBook2, docs.sun.com, et Solaris sont des marques de fabrique ou des marques déposées de Sun Microsystems, Inc. aux Etats-Unis et dans d'autres pays.

Toutes les marques SPARC sont utilisées sous licence et sont des marques de fabrique ou des marques déposées de SPARC International, Inc. aux Etats-Unis et dans d'autres pays. Les produits portant les marques SPARC sont basés sur une architecture développée par Sun Microsystems, Inc.

L'interface d'utilisation graphique OPEN LOOK et Sun™ a été développée par Sun Microsystems, Inc. pour ses utilisateurs et licenciés. Sun reconnaît les efforts de pionniers de Xerox pour la recherche et le développement du concept des interfaces d'utilisation visuelle ou graphique pour l'industrie de l'informatique. Sun détient une licence non exclusive de Xerox sur l'interface d'utilisation graphique Xerox, cette licence couvrant également les licenciées de Sun qui mettent en place l'interface d'utilisation graphique OPEN LOOK et qui en outre se conforment aux licences écrites de Sun.

LA DOCUMENTATION EST FOURNIE "EN L'ÉTAT" ET TOUTES AUTRES CONDITIONS, DECLARATIONS ET GARANTIES EXPRESSES OU TACITES SONT FORMELLEMENT EXCLUES, DANS LA MESURE AUTORISEE PAR LA LOI APPLICABLE, Y COMPRIS NOTAMMENT TOUTE GARANTIE IMPLICITE RELATIVE A LA QUALITE MARCHANDE, A L'APTITUDE A UNE UTILISATION PARTICULIERE OU A L'ABSENCE DE CONTREFAÇON.



Contents

- 1. Before You Start 1**
 - Supported Systems 2
 - Preparing for Installation 2
 - Unsupported Modules 3
 - Known Limitations 3
 - Outstanding Bugs 3
- 2. Platform-Specific Considerations 5**
 - Alarms Notifications 5
 - Known Limitations 7
 - Lights Out Management (LOM) Reporting 7
 - Power Supply Reporting 7
 - Netra t 1120/1125 7
 - Checking the OpenBoot PROM 7
 - ▼ To Check the OpenBoot PROM 7
 - Known Limitations 8
 - PSU Fan Status Reporting 8
- 3. Installing and Setting Up the Software 11**
 - Installing the Software 11

▼ To Remove an Existing Netra Supplement	12
Installing From CD	12
Installing From a Web Download	12
▼ To Install the Netra Servers Extension Into an Existing Sun Management Center Installation	12
Localization Issues for Non-English Environments	14
▼ To Remove Localization Packages	14
Installing the Localized Version of the Supplement Software	15
▼ To Install Localized Packages	15
Using the Setup Program	15
▼ To Set Up Sun Management Center on a Netra Server	16

Tables

TABLE 1-1	Netra Servers and Solaris Operating Environments Supported in This Release	2
TABLE 1-2	Approximate Disk Space Requirements	3
TABLE 1-3	Outstanding Bugs	3
TABLE 3-1	Localization Packages To Be Removed	14

Preface

This manual contains supplemental information about Sun™ Management Center for Netra Servers, which is an extension to Sun Management Center software. This extension enables customers to manage supported Netra server systems.

How This Book Is Organized

Chapter 1 explains what you need to know before installing and using Sun Management Center on your Netra server.

Chapter 2 explains specific system considerations when installing and using Sun Management Center on Netra systems.

Chapter 3 describes how to install and set up Sun Management Center on a Netra server.

Related Documentation

TABLE P-1 Related Documentation

Application	Title	Part Number
Netra t 1120/1125 servers	<i>Netra t 1120/1125 Installation and Basic Maintenance Guide</i>	805-6803
	<i>LOMlite User's Guide</i>	806-2038
Netra t1 Model 100/105 servers	<i>Netra t1 User and Administration Guide</i>	806-4707
	<i>LOMlite User's Guide</i>	806-2038
Netra t 1400/1405 servers	<i>Netra t 1400/1405 Installation and User's Guide</i>	806-0575
	<i>LOMlite User's Guide</i>	806-2038
Netra T1 AC200 and DC200 servers	<i>Netra T1 AC200 and DC200 User's Guide</i>	806-5978
Netra X1 servers	<i>Netra X1 User's Guide</i>	806-5980
Netra 20 servers	<i>Netra 20 Installation and User's Guide</i>	806-7334
Sun Fire V100 servers	<i>Sun Fire V100 Server User's Guide</i>	816-2756
Sun Fire V120 and Netra 120 servers	<i>Sun Fire V120 and Netra 120 Server User's Guide</i>	816-2090
Sun Fire V1280 Servers	<i>Sun Fire V1280 System Administration Guide</i>	816-0204

Typographic Conventions

Typeface	Meaning	Examples
AaBbCc123	The names of commands, files, and directories; on-screen computer output	Edit your <code>.login</code> file. Use <code>ls -a</code> to list all files. <code>% You have mail.</code>

Typeface	Meaning	Examples
AaBbCc123	What you type, when contrasted with on-screen computer output	% su Password:
<i>AaBbCc123</i>	Book titles, new words or terms, words to be emphasized	Read Chapter 6 in the <i>User's Guide</i> . These are called <i>class</i> options. You <i>must</i> be superuser to do this.
	Command-line variable; replace with a real name or value	To delete a file, type <code>rm filename</code> .

Shell Prompts

Shell	Prompt
C shell	<i>machine_name%</i>
C shell superuser	<i>machine_name#</i>
Bourne shell and Korn shell	\$
Bourne shell and Korn shell superuser	#

Accessing Sun Documentation

You can view and print a broad selection of Sun™ documentation, including localized versions, at:

<http://www.sun.com/documentation>

You can also purchase printed copies of select Sun documentation from iUniverse, the Sun documentation provider, at:

<http://corppub.iuniverse.com/marketplace/sun/>

Sun Welcomes Your Comments

Sun is interested in improving its documentation and welcomes your comments and suggestions. You can email your comments to Sun at:

`docfeedback@sun.com`

Please include the part number (817-0012-10) of your document in the subject line of your email.

Before You Start

The Sun Management Center for Netra Servers modules correspond to the architectural layers of Sun Management Center. The following is an overview of these modules:

- `SUNWesnts` – Netra server module: Provides libraries and other files needed by the Sun Management Center server to monitor supported Netra systems. This software must be installed on all Sun Management Center server systems in addition to the base Sun Management Center server software.
- `SUNWesnta` – Netra agent module: Provides libraries and other files needed by the Sun Management Center agent to monitor supported Netra systems. This software must be installed on all Sun Management Center-monitored Netra systems in addition to the base Sun Management Center agent software.

Supported Systems

The Netra systems and operating environments supported in this release are shown in TABLE 1-1.

TABLE 1-1 Netra Servers and Solaris Operating Environments Supported in This Release

Server	Solaris™ 2.6	Solaris 7 (32- bit and 64-bit versions)	Solaris 8	Solaris 9
Sun Netra t 112x server*	✓	✓	✓	
Sun Netra t 140x server	✓	✓	✓	✓
Sun Netra t1 Model 10x server	✓	✓	✓	
Sun Netra T1 server			✓	✓
Sun Netra X1 server			✓	✓
Sun Fire V100 server			✓	✓
Sun Netra 20 server			✓	✓
Sun Fire V120 and Netra 120 server			✓	✓
Sun Fire V1280 server			✓	✓

* Note the considerations described in Chapter 2.

Preparing for Installation

There are two methods of installation, depending on whether you have received the software on a CD or have downloaded from the Sun Management Center web site.

The Netra server system packages are installed as part of the Sun Management Center installation procedures. Before beginning the installation process, you should know which Netra server systems in your network will function as servers and consoles, and which systems will be monitored by the servers and consoles.

For Sun Management Center software installation instructions, please refer to the *Sun Management Center Software User's Guide* and the *Sun Management Center Software Release Notes*, or consult the Sun Management Center web site, www.sun.com/sunmanagementcenter, for instructions.

Before installing the Sun Management Center modules, make sure that the system where the module is being installed has sufficient disk space. The table below shows the disk space requirements for the Netra and Sun Fire-specific packages.

TABLE 1-2 Approximate Disk Space Requirements

Component	Netra Module
Agent module	5 Mbytes
Server module	4 Mbytes

Unsupported Modules

The Dynamic Reconfiguration (DR) module included in the Sun Management Center product is not functional on Netra server systems. Therefore, do not load the Dynamic Reconfiguration (DR) module on Netra and Sun Fire agents.

Known Limitations

Outstanding Bugs

TABLE 1-3 Outstanding Bugs

Bug ID.	Description
4400246	The Netra t 1120/1125 PSU fan statuses are shown as OK even when they are not monitored.

Platform-Specific Considerations

Note – There are additional specific considerations for the Netra t 1120 and Netra t 1125. Refer to “Netra t 1120/1125” on page 7.

Alarms Notifications

The Netra-specific alarms software and other platform-specific packages should be installed to ensure that the complete functionality of the Sun Management Center Supplement for Netra Servers is available. If this software is not installed, rule rcr4u228 will trigger a critical alarm, and the Netra-specific alarms will not be available.

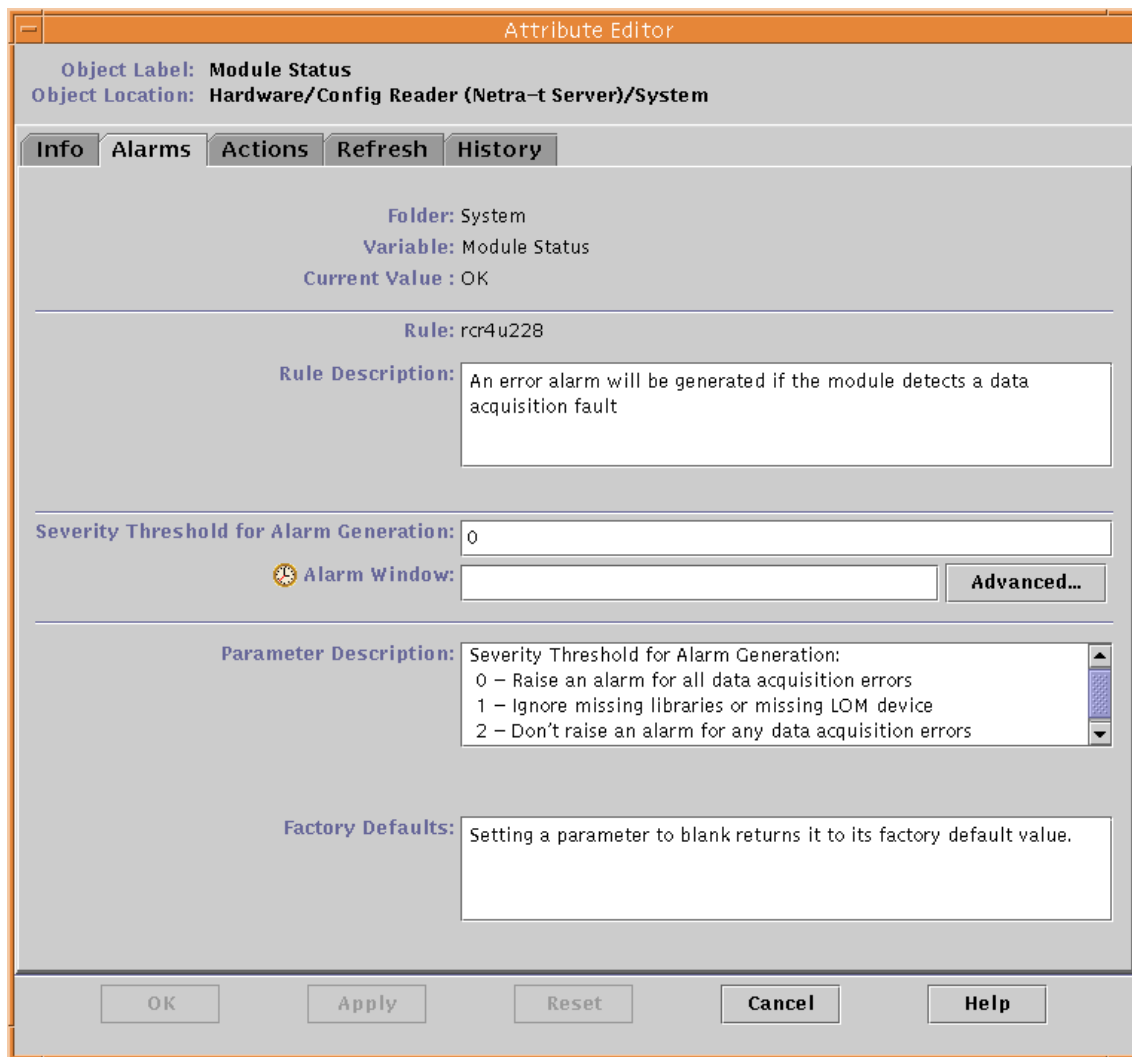
Rule rcr4u228 supports a single parameter which allows you to specify whether or not an alarm should be raised when this software has not been installed. Refer to FIGURE 2-1.

If this alarm is triggered, you must re-install the alarms or other prerequisite software as described in the appropriate *Installation Guide* as listed in TABLE P-1.

Note – The tsalarms software (Netra t 1120/1125) is referred to within Sun Management Center as LOM.

This rule supports a single parameter which allows you to specify whether or not you want an alarm to be raised on missing alarms and other platform-specific packages.

You can set the parameter using the Alarm tab of the Attribute Editor. Launch this by right-clicking on the Module Status property in the System table (refer to FIGURE 2-1), as described in chapter 9 of the *Sun Management Center 3.0 Users Guide*.



Screenshot of the Attribute Editor showing how to set the Rule rcr4u228 parameter.

FIGURE 2-1 Setting the Rule rcr4u228 Parameter

Known Limitations

Lights Out Management (LOM) Reporting

The LOM event log lists the oldest event as `event (0)`.

Power Supply Reporting

On Netra servers, power supplies (PSUs) are checked only internally for integrity. A loss of input power is reported as such, but the PSUs are flagged as OK because they do not actually have a fault themselves. There is no differentiation between AC and DC power supplies.

Netra t 1120/1125

Checking the OpenBoot PROM

Some Netra t 1120 and Netra t 1125 systems will require an upgrade to the OpenBoot PROM. If the Sun Management Center extension for Netra servers is installed on a system which requires such an upgrade, significant functionality will be unavailable, including the physical and logical hardware views, or the platform will be misidentified as an Ultra 60 workstation. If the physical and logical hardware views are not available on a Netra t 1120 or 1125, or the platform is misidentified as an Ultra 60 workstation, you should check the OpenBoot PROM as described below to ensure that the correct version is used and that it is configured correctly.

▼ To Check the OpenBoot PROM

- As root, type:

```
# eeprom banner-name
```

- If the result is:

```
banner-name=Netra t 1120/1125
```

you need take no further action and can proceed directly to the installation process as described in Chapter 3.

- If the result is:

```
banner-name=<message>
```

where <message> may be anything else, including nothing at all, type:

```
# eeprom banner-name='Netra t 1120/1125'  
# reboot
```

You must restart the system as shown before installing Sun Management Center as described in Chapter .

- If the result is:

```
banner-name: data not available
```

you must upgrade the PROM. Refer to the documentation accompanying the system for instructions, or contact your local Sun representative.

Known Limitations

PSU Fan Status Reporting

The status of the PSU fans is reported as OK when the tsalarms software has been configured to ignore the status of the PSU fans.

You should check the file `/kernel/drv/tsalarm.conf`. If there is a line in this file reading `monvalidmask=255`, the PSU fans will be monitored correctly. If there is no such line in the file, or the line exists but the number is different, change the line to read `monvalidmask=255`. A reboot or `modunload(1M)` and then `modload(1M)` is required for the change to become effective. See `tsalarm(7D)`.

Note – On early Netra t 1120/1125s, the PSU fan status is not monitored. For these systems, setting `tsalarm.conf` as described above may cause the PSU fans to be reported as faulty. If, on setting `tsalarm.conf` as described above, both PSU fans are reported as faulty and the fans are visibly spinning, it is likely that you have an older Netra t 1120/1125. You should set `tsalarm.conf` back to its previous settings. In this case, the PSU fans will always be reported by Sun Management Center as OK.

Installing and Setting Up the Software

The installation procedure from a CD is different from that for a web download.

The configuration procedure is identical.

Installing the Software

Note – If you are upgrading an existing Sun Management Center installation to provide support for a newly released Netra platform it is not necessary to re-install the core Sun Management Center packages. Instead, follow the instructions described in “To Install the Netra Servers Extension Into an Existing Sun Management Center Installation” on page 12.

Note – If you a previous version of the Netra Supplement already installed, you must remove the existing packages before installing the new versions.

▼ To Remove an Existing Netra Supplement

1. Check which Netra Supplement packages are already installed.

For instance:

```
# pkginfo -l SUNWesnta SUNWesnts | grep VERSION
VERSION:  2.1.1_Build_5.1,REV=2.7.2001.02.09
VERSION:  2.1.1_Build_5.1,REV=2.7.2001.02.09
```

2. To remove the currently-installed packages, use the `pkgrm` command.

For instance:

```
# pkgrm SUNWesnta SUNWesnts
```

Installing From CD

Refer to the *Sun Management Center Software User's Guide* and the *Sun Management Center Software Release Notes*, or consult the Sun Management Center web site, www.sun.com/sunmanagementcenter, for instructions.

Installing From a Web Download

Before installing the packages you must download them from the Sun Management Center website at www.sun.com/sunmanagementcenter. These files are in compressed tar format. Note that some of the filenames may vary depending on which version of Solaris you are using and the version of Sun Management Center you have downloaded.

▼ To Install the Netra Servers Extension Into an Existing Sun Management Center Installation

1. Log on as root.
2. If the server is running, stop it by typing:

```
# es-stop -S
```

3. Create a temporary directory and move to it, for instance:

```
# mkdir /var/tmp/symon
# cd /var/tmp/symon
```

4. Download the appropriate file into the directory you have created.

5. Uncompress and untar the file, for instance:

```
# uncompress symon-supply.Netra_2.7.bld7.1a_110n.tar.Z
# tar -xvf symon-supply.Netra_2.7.bld7.1a_110n.tar
```

The exact filenames will vary depending on the Solaris version you are using and the software release you have downloaded.

6. Move to the appropriate directory according to the version of Solaris in which you are installing the software, then give the `pkgadd` command to start the installation process.

For instance, for Solaris 7 type:

```
# cd /var/tmp/Solaris_7/Netra
# pkgadd -d .
```

The following packages are available:

- 1 SUNWesnta Sun Management Center Configd Agent For Netra t Platforms
 (sparc) 3.0_Build_7.1,REV=2.7.2002.03.25
- 2 SUNWesnts Sun Management Center Server Images For Netra t Platforms
 (sparc) 3.0_Build_7.1,REV=2.7.2002.03.25

Select package(s) you wish to process (or 'all' to process all packages). (default: all) [?,??,q]:

Type the number(s) for the package(s) you want to install.

The package names may vary slightly from those shown above.

7. When the installation is complete, delete the downloaded file from the temporary directory you created at Step 3, then delete the directory itself.

8. Run Setup as described in “To Set Up Sun Management Center on a Netra Server” on page 16.

9. Restart the server by typing:

```
# es-start -S
```

Localization Issues for Non-English Environments

If you have previously installed localization packages for this add-on (see TABLE 3-1), you should remove those packages manually by following the steps described in “To Remove Localization Packages” on page 14.

TABLE 3-1 Localization Packages To Be Removed

Package Name	Description
SUNWcesns	Simplified Chinese Sun Management Center Server Images For Netra Servers
SUNWdesns	German Sun Management Center Server Images For Netra Servers
SUNWeesns	Spanish Sun Management Center Server Images For Netra Servers
SUNWfesns	French Sun Management Center Server Images For Netra Servers
SUNWhesns	Traditional Chinese Sun Management Center Server Images For Netra Servers
SUNWiesns	Italian Sun Management Center Server Images For Netra Servers
SUNWjesns	Japanese Sun Management Center Server Images For Netra Servers
SUNWkesns	Korean Sun Management Center Server Images For Netra Servers

▼ To Remove Localization Packages

1. **Check whether you have any localization packages listed in TABLE 3-1 already installed:**

```
# pkginfo <package_name> <package_name> ...
```


2. If `pkginfo` displays information of any localization package without an error message, become superuser with the `su -` command, then remove the package(s):

```
# pkgrm <package_name> <package_name> ...
```

Installing the Localized Version of the Supplement Software

To install the localized packages, perform the following steps after the installation of the English Sun Management Center 3.0 software and Netra supplement packages is completed. The localized packages only need to be installed on the server.

▼ To Install Localized Packages

1. The localized packages will have been extracted from the tar file you downloaded and uncompressed in “Installing From a Web Download” on page 12.
2. Use the `pkgadd` command to install the localized packages.

```
# pkgadd -d . SUNWcesns SUNWhesns SUNWjesns SUNWkesns
```

Using the Setup Program

After the Sun Management Center and Netra packages are successfully installed, the installation script will ask if you want to run the setup script. You can do so by typing Yes [y] at the prompt. If you answer No [n] you can run the setup program later on.

The setup script prompts you for a license key and asks questions about the Config-Reader you wish to set up. For the license key and other basic information, refer to the sections on setting up Sun Management Center in the *Sun Management Center User's Guide*.

The remainder of this section explains how to respond to the prompts for setting up a Config-Reader for Netra servers.

▼ To Set Up Sun Management Center on a Netra Server

1. If you need to, start the setup program:

a. Log on as root.

b. Type:

```
# /opt/SUNWsymon/sbin/es-setup
```

2. Respond to the prompts and questions as documented in the *Sun Management Center User's Guide*.

3. Eventually you will see a prompt similar to:

```
-----  
Starting Sun Management Center Netra t Setup  
-----  
---> Platform Found: Netra t 1400/1405  
---> Netra t add-on Agent package found! <---  
Do you want to setup Netra t Config Reader for this platform? [y|n|q] y
```

The log file name and platform name will vary according to the type of server on which you are performing the setup:

- Netra t1 Model 100/105
- Netra T1 AC200 and DC200
- Netra t 1120/1125/1400/1405
- Netra X1
- Netra 20 AC100/DC100
- Sun Fire V120/Netra 120
- Sun Fire V100
- Sun Fire V1280

4. Answer *y* to confirm that you wish to perform the setup.

5. When the setup has been completed, you will see a message similar to:

```
Sun Management Center setup complete.
```