

The StarOffice™ 6.0 Suite

New Features Guide



Sun Microsystems
901 San Antonio Road
Palo Alto, CA 94303
1 (800) 786.7638
1.512.434.1511

v. 1.1

July 2002

Copyright 2002 Sun Microsystems, Inc., 901 San Antonio Road, Palo Alto, California 94303 U.S.A. All rights reserved. Printed in the United States of America.

RESTRICTED RIGHTS LEGEND: Use, duplication, or disclosure by the government is subject to restrictions as set forth in subparagraph [c](1)(ii) of the Rights in Technical Data and Computer Software clause at DFARS 252.227-7013 and FAR 52.227-19.

The product described in this manual may be protected by one or more U.S. patents, foreign patents, or pending applications.

Sun, Sun Microsystems, the Sun logo, StarOffice, Java, and Solaris are trademarks or registered trademarks of Sun Microsystems, Inc. in the United States and other countries. All SPARC trademarks are used under license and are trademarks or registered trademarks of SPARC International, Inc. in the United States and other countries. Products bearing SPARC trademarks are based upon an architecture developed by Sun Microsystems, Inc. UNIX is a registered trademark in the United States and other countries, exclusively licensed through X/Open Company, Ltd. Netscape is a trademark of Netscape Corporation in the United States and other countries. PostScript is a trademark of Adobe Corporation in the United States and other countries.

THIS PUBLICATION IS PROVIDED "AS IS" WITHOUT WARRANTY OF ANY KIND, EITHER EXPRESS OR IMPLIED, INCLUDING BUT NOT LIMITED TO THE IMPLIED WARRANTY OF MERCHANTABILITY, FITNESS FOR A PARTICULAR PURPOSE, OR NON-INFRINGEMENT.

THIS PUBLICATION COULD INCLUDE TECHNICAL INACCURACIES OR TYPOGRAPHICAL ERRORS. CHANGES ARE PERIODICALLY ADDED TO THE INFORMATION HEREIN; THESE CHANGES WILL BE INCORPORATED IN NEW EDITIONS OF THE PUBLICATION. SUN MICROSYSTEMS, INC. MAY MAKE IMPROVEMENTS AND/OR CHANGES IN THE PRODUCTS) AND/OR THE PROGRAMS DESCRIBED IN THIS PUBLICATION AT ANY TIME.



Please
Recycle



Table of Contents

Welcome to StarOffice™ 6.0.....	1
Key Benefits.....	1
Seamless Integration with the Microsoft Windows and UNIX Platforms.....	1
Tighter Integration of Creativity and Productivity Tools.....	2
Exciting New Clip Art, Templates, and Fonts.....	5
Improved International and Unicode Support.....	6
New Support for Open Standards.....	10
Improved Microsoft Office Interoperability	11
Enhanced Help System.....	15
Improved User Interface.....	16
New Features at a Glance.....	17
What's New in StarOffice 6.0.....	17
What's New in StarOffice Writer 6.0.....	20
What's New in StarOffice Calc 6.0.....	23
What's New in StarOffice Impress 6.0 / Draw 6.0.....	25
What's New in StarOffice Base 6.0.....	26
What's Different in StarOffice 6.0.....	28
Other changes.....	29
For More Information.....	33
System Requirements and Availability.....	34
The StarOffice 6.0 Suite.....	34
Solaris Operating Environment (SPARC Platform Edition).....	34
Solaris Operating Environment (Intel Platform Edition).....	34
Linux Platform.....	34
Microsoft Windows.....	35

Welcome to StarOffice™ 6.0

This document provides an overview of the new and improved features and key changes introduced in StarOffice™ 6.0 software. When designing this new version, the team paid close attention to the demands of existing StarOffice software users from around the globe to deliver a complete, cost-effective, world-class office productivity suite.

Enterprise users will benefit from the seamless cross-platform compatibility, enhanced Microsoft Office interoperability, and new XML and Asian language support. Small business owners and professionals will enjoy the ease of working with powerful productivity tools in a fully integrated, intuitive environment and the ability to jump-start their projects with professionally designed templates. Educators and students will appreciate the multilingual writing aids and online help, advanced graphics capabilities, colorful new clip art, and value of this award-winning office suite.

Key Benefits

The key benefits of StarOffice 6.0 software include:

- Seamless integration with the Microsoft Windows and UNIX® operating systems to deliver top performance for users of the Solaris™ Operating Environment, Linux, and Microsoft Windows.
- Tighter integration of creativity and productivity tools to maximize efficiency and output.
- Exciting new clip art, templates, and fonts to jump-start projects and add color, fun, and style to documents, reports, and presentations.
- Improved international and Unicode support to facilitate the creation of multilingual documents.
- New support for open standards to ensure your investment in StarOffice software is safe for years to come.
- Improved Microsoft Office interoperability to facilitate the exchange of documents with Microsoft Office users.
- Enhanced Help system to help both newcomers and seasoned StarOffice software users make the most of StarOffice 6.0.
- Improved user interface to help you more easily navigate the StarOffice 6.0 menus, toolbars, and dialog boxes.

Seamless Integration with the Microsoft Windows and UNIX Platforms

The StarOffice 6.0 productivity suite offers exceptional cross-platform compatibility with enhanced support for users of the Solaris Operating Environment, Linux, and Microsoft Windows.

New Quick Launch option (Microsoft Windows only). Get to work in a jiffy. The new Quick Launch option enables you to launch new StarOffice documents or open existing ones at the click of a mouse. Simply right-click the Quick Launch icon in the Microsoft Windows system tray and select the type of document you want to create from the context menu. Double-

clicking the icon launches the Templates and Documents dialog box. To toggle this option on or off, select Load StarOffice at system start-up from the Quick Launch context menu or in the Tools > Options > General dialog box.

New Open and Save As dialog boxes (Microsoft Windows only). By default, StarOffice 6.0 software uses the standard Microsoft Windows dialog boxes, which have been enhanced to include some StarOffice software-specific features that make it easier to open and save files. If you want to use the StarOffice Open and Save As dialog boxes, choose Tools > Options > StarOffice > General from the Tools menu and then select the Use StarOffice dialogs check box.

Improved font rendering and printing solutions for the UNIX platform. StarOffice 6.0 software introduces new solutions for rendering and printing TrueType fonts for Solaris and Linux software.

- **Enhanced font handling and rendering** StarOffice 6.0 software introduces FreeType technology and TrueType support to enhance the text display quality for Solaris and Linux software users. Other enhancements include support for text rotation and kerning, embedded bitmapped graphics, vertical glyph substitution, and antialiasing, which works with 24-bit and 32-bit video adapters as well as with 8-bit grayscale visuals. A display render extension is supported, but not required.
- **Improved SPAdmin utility** The SPAdmin printer administration utility has been redesigned with an eye toward ease of use and functionality. Solaris and Linux software users will appreciate the new simplified main dialog box; the new Connect tab page, located below the Properties tab; the new Font Substitution tab page in the Configuration dialog box; the ability to rename fonts using the font dialog box; and the new Add printer button, which starts a utility that steps users through the task of adding a new printer.
- **New Adobe PDF support** Enhancements to the SPAdmin tool also enable users of Solaris and Linux software to configure an Adobe PDF printer driver that converts Adobe PostScript output into a PDF document, provided Ghostscript or Adobe Acrobat Distiller is installed. Using the Add Printer button makes it easy to configure the command line that should be executed to process the Postscript output. If Ghostscript or Adobe Acrobat Distiller is installed, StarOffice 6.0 software provides preconfigured command lines.

New e-mail support for sending documents You can send any text, spreadsheet, drawing, or presentation document as e-mail by selecting File > Send > Document As E-mail. The respective StarOffice module will send the document as an attachment using the default e-mail client (Microsoft Windows only) or Netscape 6.x Messenger (Solaris and Linux). You can specify an alternate e-mail client by selecting Tools > Options > StarOffice > External Programs.

Tighter Integration of Creativity and Productivity Tools

Using StarOffice software, you don't have to spend a lot of time trying to figure out the shortest distance between any two components; nor do you have to understand the relationships that exist between them. All StarOffice modules share the same basic menu commands, toolbars, and function keys, and the program's IntuitiveUse technology automatically provides the tools you need for the task at hand. StarOffice 6.0 maximizes your productivity by introducing the following improvements:

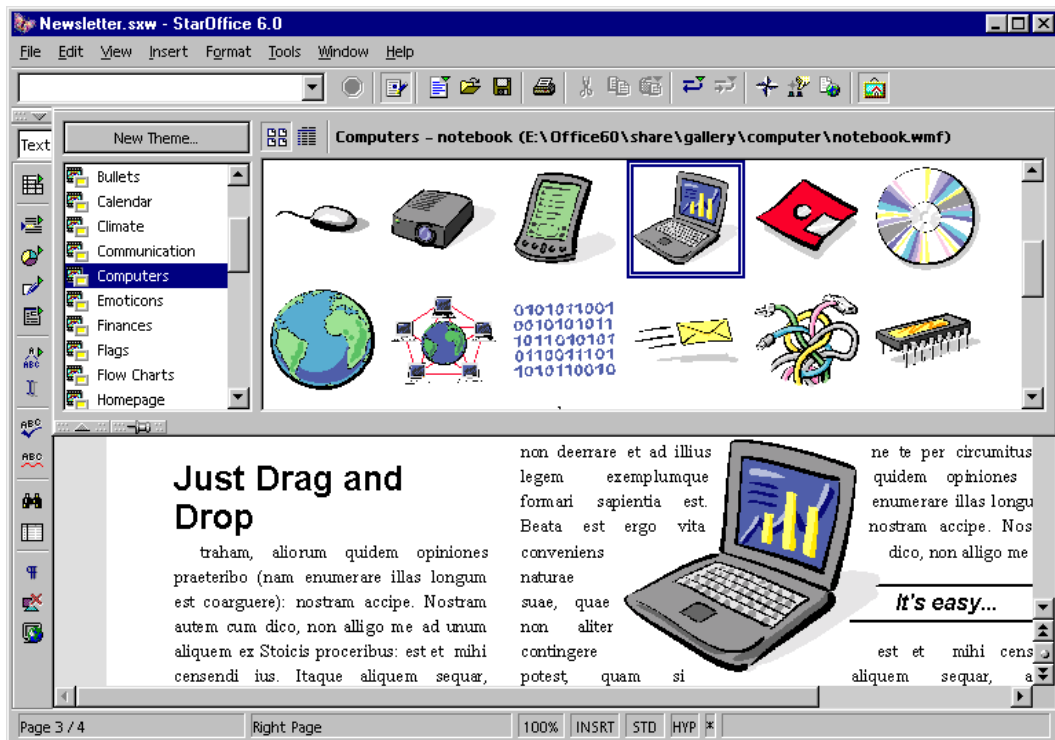


FIGURE1: Add fun and color to your documents with graphics and clip art from the new StarOffice Gallery.

Improved StarOffice Gallery Add color, fun, and style to your projects and reports — drag and drop graphics from the newly designed StarOffice Gallery into your documents or presentations. The StarOffice Gallery contains a variety of high-quality clip art, pictures, shapes, and sounds, organized by themes. Browse through and select clips in thumbnail or list views, or add your own themes and clips to this handy media organizer tool. Whether you're working on a text document, spreadsheet, presentation, or drawing, you can quickly access the new StarOffice Gallery by clicking the Gallery icon on the function bar or by selecting Gallery from the Tools menu.

New graphics tools Generate pixel-perfect images across all StarOffice modules. The functionality of StarOffice Writer, Calc, Draw, and Impress has been enhanced with a new set of graphics tools that was previously available only in StarOffice Image. These new tools can be accessed from the Graphics object bar, which becomes available as soon as you insert or select a bitmap graphic into a text document, spreadsheet, or presentation.

- **New Graphics object bar** Using the Graphics object bar, you can set the attributes of a selected bitmap graphic, including Filter effects, Graphics mode (Default, Grayscale, White/Black, and Watermark), Alpha channels (for the colors red, green, and blue), Brightness, Contrast, Gamma value, and Transparency. Clicking the arrow on the right of the Graphics object bar replaces the Graphics object bar with the enhanced Frame object bar (StarOffice Writer 6.0 only).
- **Enhanced Frame object bar (StarOffice Writer only)** The Frame object bar enables you to modify the frame attributes of selected bitmap graphics, including alignment, anchor positions, borders, and background color, which is useful for cropped graphics or if there is space between a border and its contents.

New chart handling StarOffice 6.0 software provides integrated charting functionality across all StarOffice modules. As a result, it is no longer necessary to save StarOffice charts as individual files. However, you can still load standalone charts that were created with the StarOf-

Office Chart 5.2 module or earlier, and insert them in your StarOffice 6.0 documents as OLE objects.

- **New Edit option (standalone charts only)** To edit a standalone chart, select Chart Data from the Edit menu or the Chart context menu.
- **New Source format option (embedded charts only)** The Axis dialog boxes include a new option that enables you to assign the source format of the cells on which your chart is based for the first and second X axis (XY charts only) and Y axis (all charts). To use this option, select Format > Axis > X Axis (or Y Axis) and go to the Numbers tab. If you select the Source format option, the X and Y axes will adopt the number format of the selected data range on which the chart is based. For example, if all cells in a column have the same number format, then this format is used for the Y axis as well.

New Data Source Administration dialog box Integrate data sources quickly and easily. StarOffice 6.0 software introduces a new dialog box for administering office-wide access to data sources. Using this dialog box, you can build connections to existing data sources, specify StarOffice Calc, Microsoft Excel, and other supported spreadsheet documents as data sources, design and edit database tables, define new queries or edit existing ones, and create links to remote data sources, including forms and text documents. When specifying a data source, the program automatically enters the corresponding protocol scheme in the Data source URL text box (for example, `sdbc:dbase:`), facilitating the task of establishing a connection to a desired data source. The connected data sources appear in the list box on the left of the Data Source Administration dialog box.

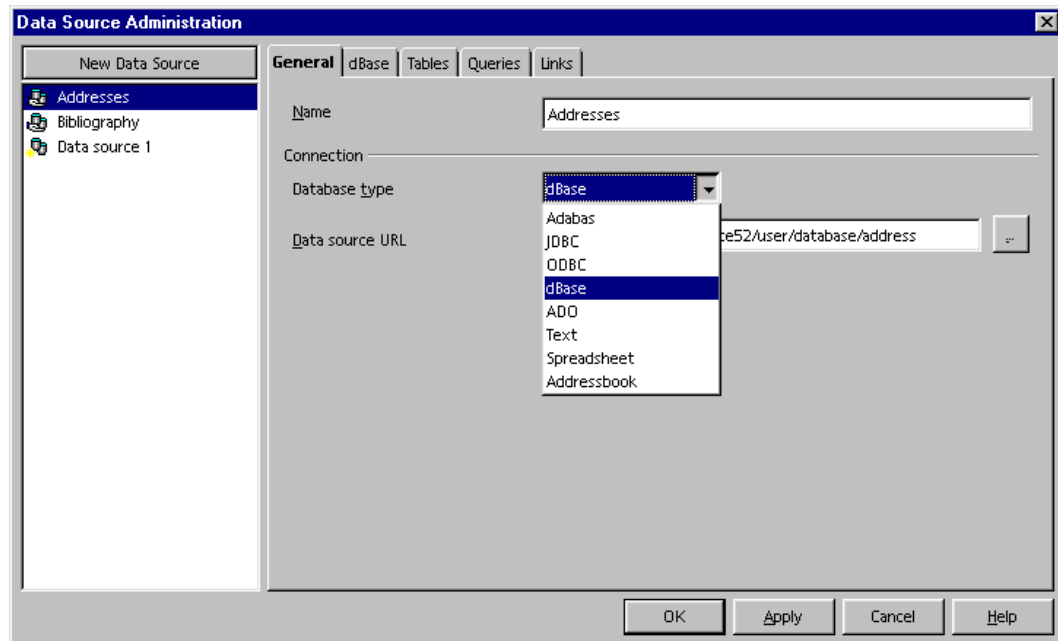


FIGURE 2: The new Data Source Administration dialog box makes it a snap to manage your data sources.

New Address Book utility Manage your contacts with ease. The StarOffice 6.0 suite comes with a new Address Book dialog box that enables you to continue to use your existing StarOffice address books or integrate internal ones. A new database driver called Addressbook supports access to the LDAP, Mozilla, Netscape 6.x, Microsoft Outlook, and Microsoft Windows address book sources. To access the new Address Book dialog box, select File > Templates > Address Book Source. If you want to manage your address book source, click the Administrate button in the Address Book dialog box, and the new Data Source Administration dialog box opens.

New Address Data Source AutoPilot Streamline the import of your existing contacts from Netscape 6.x, Mozilla, LDAP, Microsoft Outlook, Microsoft Windows Address Book, or other data sources. The new AutoPilot for Address Data automatically starts the very first time you launch a StarOffice 6.0 task. The AutoPilot steps you through the process of selecting your external address book source, specifying any relevant type-specific data source settings or address book field mappings for custom address sources, and assigning a name to the new address book.

New Page Preview feature Check the text flow and page breaks of your documents before printing them. The new Page Preview feature enables you to see what your text document or spreadsheet will look like on paper before you actually print it. Unlike earlier StarOffice versions, the new Page Preview feature uses the current task window (instead of a new one) for displaying the current document in print layout. To use this feature, select Page Preview from the File menu. To return to the original document, click the Page Preview button on the Preview object bar or deselect the Page Preview item in the File menu.

Exciting New Clip Art, Templates, and Fonts

Jump-start your projects with professionally designed templates and enrich your work with graphics, sounds, and animations that you can drag and drop from the new StarOffice Gallery into your text, spreadsheet, drawing, and presentation documents.

New Gallery themes and clip art Enrich your projects with new graphics and sounds. The revamped StarOffice Gallery contains an extensive collection of useful, professionally designed clip art, animations, pictures, shapes, and sounds, organized by themes to help you find what you want, quickly and easily. Screen Beans clip art helps illustrate your ideas with just the right touch of insight and humor. Other StarOffice Gallery features include the ability to create and organize your own themes, preview sounds and images, and import additional items.

New Templates and Documents dialog box Streamline your work with new templates and sample files. Using the new Templates and Documents dialog box, you can browse and organize the contents of the Templates, My Documents, and Samples directories, edit your templates, and preview templates and documents before opening them.

- **New and updated templates** Using the Templates and Documents dialog box, you can choose from a new collection of professionally designed StarOffice 6.0 templates. Use and modify at will, including templates that track the results of your favorite sports events or the price history and current value of your stock portfolio (with live Internet updates).
- **New and updated sample files** StarOffice 6.0 software includes a new set of sample files that highlight the strengths of the various StarOffice applications while giving you a hand with everyday work.

All templates and sample files can be accessed by selecting File > New > Templates and Documents. Microsoft Windows users can also double-click the the Quick Launch icon in the system tray (if enabled).

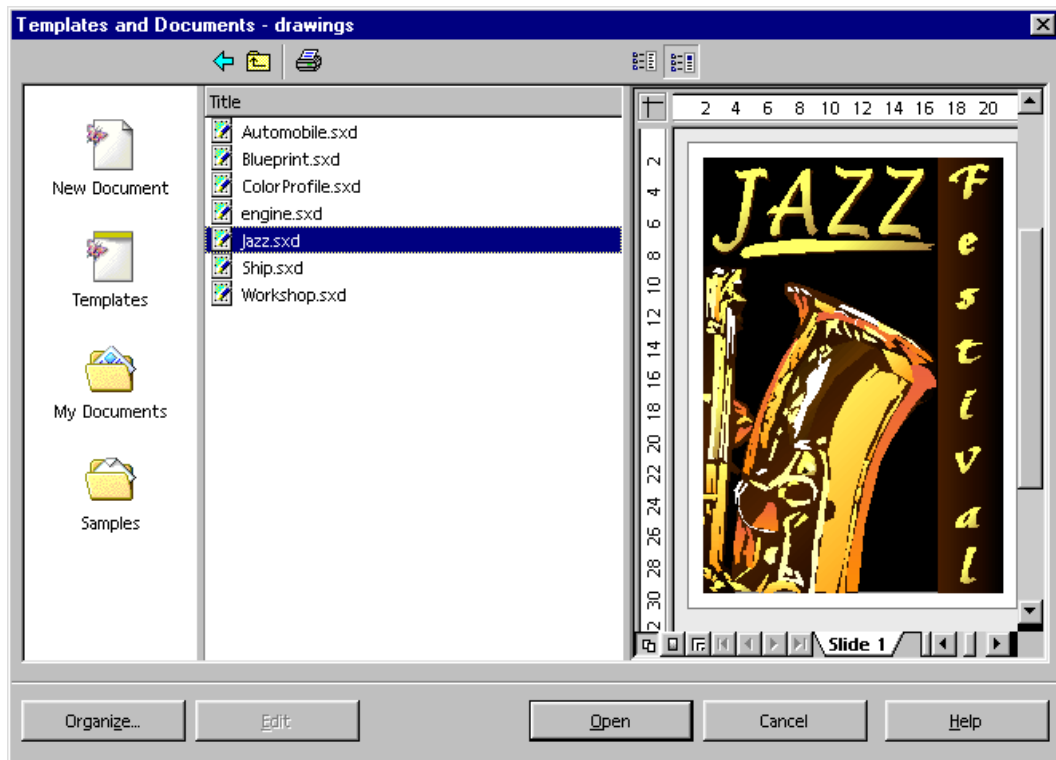


FIGURE3: The new Templates and Documents dialog box makes it easy to organize, edit, and preview your documents and templates.

New fonts and font effects StarOffice 6.0 comes with a new set of TrueType fonts, including fonts and font effects that support Chinese, Japanese, and Korean character sets.

Improved International and Unicode Support

Check spelling and hyphenation in multilingual documents and create Japanese, Chinese, and Korean documents.

New Unicode support StarOffice 6.0 software supports the Unicode character standard, which represents the principal written languages of the world, using a single character set. Unicode support enables you to insert any combination of letters and diacritical marks into your documents, as well as use special characters from non-Western languages. You can access the complete Unicode character set by selecting Special Character from the Insert menu. Using the Subset drop-down list, you can then quickly zoom in on the character set of the alphabet you want.

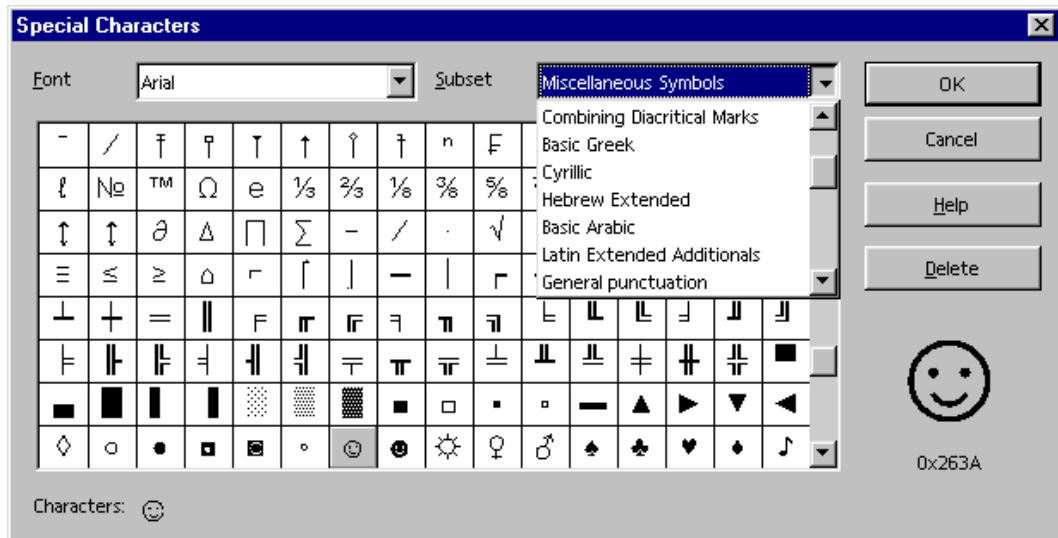


FIGURE4: The Special Characters dialog box makes it easy to insert the complete Unicode character set.

New support for Asian languages StarOffice 6.0 software provides double-byte support for Japanese, Chinese, and Korean, enabling you to create multilingual documents.

StarSuite 6.0 supports GB18030 encoding. The character encoding length can be one, two or four bytes.

NOTE: To enable StarOffice support for Asian languages, you must choose **Tools > Options > Language Settings > Languages** and select the (Asian languages support) Enabled check box. Otherwise, you will not be able to see or access the following new Asian language features included in StarOffice 6.0 software.

Feature	Enables You To ...	How to Access
Vertical character position	Specify the writing direction from bottom to top or top to bottom by rotating text by 90 or 270 degrees. The rotated text can be scaled in width or made to fit the current line.	Select Format > Character. The Rotation/scaling options are located on the Position tab of the Character dialog box.
Vertical text alignment	Align rotated text vertically. You can choose one of five options for vertical text alignment: Automatic, Baseline, Top, Middle, or Bottom.	Select Format > Paragraph. The Vertical text alignment options are located on the Alignment tab of the Paragraph dialog box.
Ruby text	Add brief explanations or pronunciation aids that appear above (or below) the selected baseline text. Ruby text is used in most East Asian languages to add information to written text.	Select Format > Ruby. Using the Ruby dialog box, you can manage the list of applied Ruby text entries, set the alignment of the base text in relation to the Ruby text, change the position of the Ruby text entry, and modify the character style for the Ruby text.
Different fonts for Asian and Western text	Specify different fonts for Western and Asian language text in multilingual documents.	Select Format > Character. The font options for Western and Asian text can be specified on the Font tab.
Double-lined character attribute	Insert snippets of Latin-based text within Asian character-based documents.	Select Format > Character. The Double-lined option can be activated on the Asian Layout tab.

Feature	Enables You To ...	How to Access
Emphasis mark character attribute	Stress text in layout. The Emphasis Mark character attribute provides a common way for emphasizing text in Asian layouts. Using StarOffice 6.0 software, you can choose from four attribute styles (Dot, Circle, Disc, and Accent), which may be placed above or below the selected text.	Select Format > Character. The Emphasis Mark attribute can be specified on the Font Effects tab.
Asian Layout options	Specify the global settings for handling Asian character kerning and spacing across your documents.	Select Tools > Options > Language Settings > Asian Layout.
Case/Characters text properties	Assign Asian language case attributes to selected Asian language text and characters, including the Japanese case options Hiragana and Katakana.	Select Format > Case/Characters.
Combine characters field type	Define up to six consecutive characters which will be handled as one character using the new Combine characters field type.	Select Insert > Fields > Other. The Combine characters field type is located on the Functions tab.
Line change formatting options	Apply a list of forbidden characters to the beginning and end of lines, permit hanging punctuation, and use spacing between Asian, Latin, and complex text.	Select Format > Paragraph. The line change options are located on the new Asian Typography tab.
Sounds like (Japanese) search option	Specify which characters or syllables to treat as equal and which to ignore during a find-and-replace operation. To define the global settings for this feature, select Tools > Options > Language Settings > Searching in Japanese.	Select Edit > Find & Replace.
Sort order options	Use language-specific sort order options for both text documents and spreadsheets. The Sort dialog box in StarOffice Writer enables users to select a language for the sort operation, and then specify language-dependent sort criteria. The Sort dialog box in StarOffice Calc contains the Language and Options list boxes, which enable users to specify Asian language-specific sort criteria.	In StarOffice Writer: Select Tools > Sort. In StarOffice Calc: Select Data > Sort. The language and language-specific options can be set on the Options tab.
AutoLayout designs for vertical text in presentations	Support vertical text in presentations. StarOffice Impress includes four new AutoLayout designs.	Start a new presentation document and choose the AutoLayout from the Modify Slide dialog box, or select Modify Layout from the Format menu.
Encoded text filter	Include the new Chinese, Korean and Japanese character sets, as well as a new Unicode set, which enables the creation of Unicode text files that contain 16-bit instead of 8-bit characters.	In the Save As dialog box, select Text (encoded) from the Save as type drop-down list.
Hancom Hangul Word Processor import filter	Open Hancom Hangul Word Processor files, the most popular word processor software in Korea.	Select File > Open. Select Hangul WP 97 from the Files of type drop-down list.
WPS 2000/Office 1.0 import filter	Opens WPS 2000 and WPS Office 1.0 text documents. WPS is the most popular word processor in the People's Republic of China (PRC).	Select File > Open. Select WPS 2000/Office 1.0 from the Files of type drop-down list.
Ichitaro 8,9,10, and 11 import filter	Opens Ichitaro document files and template files.	Select File > Open. Select Ichitaro 8/9/10/11 or Ichitaro 8/9/10/11 Template from the Files of type drop-down list.

Feature	Enables You To ...	How to Access
Full-width Katakana user interface	Use full-width Katakana in the StarOffice user interface. After changing all Japanese resource strings from half width to full width with 641w the 641x update will be almost always capable of showing these relatively long strings in all dialogs without clipping. Exceptions (that are not yet changed) are: <ul style="list-style-type: none"> • Writer/Insert table - Button AutoFormat • Writer/Insert indexes/Page Entries - Buttons EntryText and Hyperlink • Writer/Insert Frame/Wrap - One ImageRadioButton is slightly clipped. 	Run StarOffice.
Additional CJK templates	More easily use simplified and traditional Chinese fonts. Japanese expense statement, estimate statement, order statement, delivery statement, map of Japan, Japan-centered map of the world, and résumé.	File > New > Templates and Documents or File > Templates > Organize or File > Templates > Edit
Manuscript / grid layout	Enables easier editing of CJK characters.	Format > Page > Grid (line and character) on.

New international number formats StarOffice 6.0 comes with a newly designed dialog box for assigning number formats to support the international formats for date, time, and currencies.

- **More language choices** To specify a number format for a specific locale, StarOffice software users can choose from more than 90 locales. The program automatically provides the corresponding time and calendar settings. To specify a locale, select Tools > Options > Language Settings > Languages.
- **New date and time formats** To support the Gregorian, Japanese Gengou, and the Traditional Chinese ROC calendars, StarOffice 6.0 software introduces new date and time formats in the Document and DocInformation tabs of the Fields dialog box. To define and insert a date or time format, select Insert > Fields > Other.
- **New currency formats** StarOffice 6.0 software comes with a detailed list of locales and their currencies. Users can specify a locale by selecting Options > Language Settings > Languages from the Tools menu; StarOffice software automatically sets the default currency for the selected region.
- **New default currency option** The default currency is used in currency number formats, currency fields, and the Number Format: Currency button on the StarOffice Calc object bar. Users can set the default currency by selecting Tools > Options > Language Settings > Languages. (Note: The Euro is default currency for all countries within the European Monetary Union.)

New options for configuring writing aids The Options dialog box contains a new tab page for configuring writing aids. Using this new option, users can choose any major Western and Asian language module, and specify up to three dictionaries (Spelling, Hyphenation, and Thesaurus) for each language. To access this option, select Tools > Options > Language Settings > Writing Aids.

New Support for Open Standards

StarOffice 6.0 software supports open standards and programming interfaces, including HTML, ODBC, Java, and XML. By supporting open standards, the StarOffice product delivers

quality and performance for users that seek an affordable and reliable alternative to today's costly, proprietary office productivity offerings.

New language-independent API Expand the StarOffice functionality and link to other applications with an open, language-independent, and component-oriented API. The new StarOffice API supports the C++ and Java™ languages. Other programming languages are supported as well, but programmers must provide their own language bindings. Developers who want to write additional components, modify the StarOffice UI, or otherwise extend the StarOffice 6.0 functionality can download the Office Development Kit (ODK) at http://udk.openoffice.org/udk_package.html. The ODK sources are readily available at OpenOffice.org, www.openoffice.org.

New XML file format and saving options In response to customer demand for content-stability, performance, and flexibility to create, manage and access complex documents and Web pages for years to come, the StarOffice team has replaced the previous binary file format with a new, XML-based file format. XML provides a standards-based, platform- and application-independent environment for defining document markup. The new file name extensions are:

Module	Extension
Writer	sxw
Writer Master Document	sxg
Calc	sxc
Draw	sxd
Impress	sxi
Math	sxm (fully compliant with mml standards)

- **Enhanced file format compatibility** StarOffice 6.0 is backward compatible, allowing you to load and edit documents created in StarOffice 5.2 or earlier. When saving StarOffice documents, you can choose between saving files in the old binary format or the new XML format. When saving files to XML, the XML filters of the various StarOffice modules store packages instead of plain XML files. To validate the contents of an XML file, you must unzip the package. The plain XML file is contained within the package's "Content" entry.
- **New file format saving preferences** Don't want to save your documents in the new StarOffice 6.0 default file format? You can set a default standard file format for your text, spreadsheet, presentation, and drawing documents and formulas. To set file format saving preferences for individual StarOffice 6.0 modules, select Tools > Options > Load/Save > General and go to the Standard file format list box.
- **New Document Converter** StarOffice 6.0 software includes a new Document Converter that steps you through the process of converting binary StarOffice and Microsoft Office documents to the new StarOffice XML format in batches. The Document Converter also includes an option for writing its actions to a log file that will be stored in the StarOffice 6.0 work folder. To use this tool, select File > AutoPilot > Document Converter.

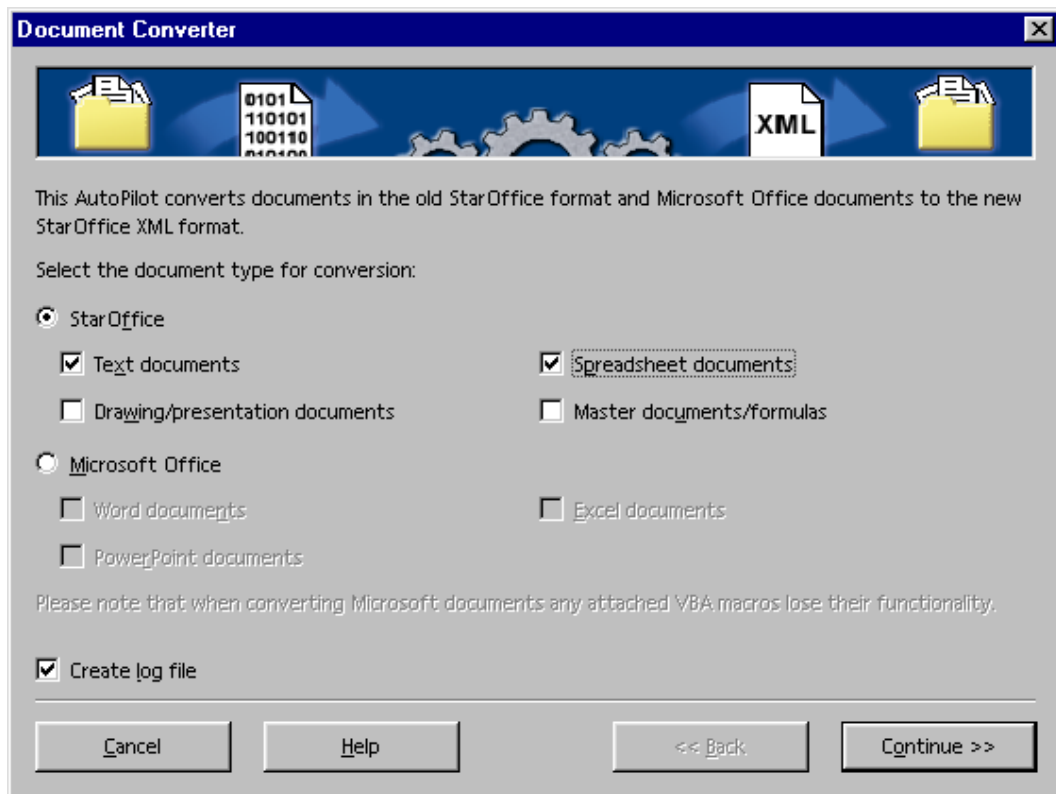


FIGURE 5: Use the new Document Converter to convert binary StarOffice and Microsoft Office files to the new StarOffice XML file format.

Improved Microsoft Office Interoperability

Collaborate across computing platforms. StarOffice software's filter architecture provides consistent, reliable text and graphics import and export across platforms, and the best Microsoft Office import and export filters available today.

Improved import and export of objects The Microsoft Office import and export filters have been enhanced to facilitate the exchange of complex documents between StarOffice and Microsoft office users.

- **New filter options for OLE objects** The Options dialog box contains new filter options for the import and export of Microsoft Office documents. Using these options, you can specify whether Microsoft Office OLE objects should be converted into StarOffice objects and vice versa. Using these new filter options is of special interest for users of the Solaris and Linux operating environments who work on platforms that don't support either the Microsoft OLE technology or the StarOffice OLE technology. To use these options, select Tools > Options > Load/Save > Microsoft Office.
- **Improved export of hatches** Hatches are background attributes for StarOffice drawing objects that are not supported by Microsoft Office. To ensure the seamless export of StarOffice drawing objects to Microsoft Word, Excel, or PowerPoint documents, StarOffice 6.0 introduces enhanced export filters that convert the vector-oriented hatches into bitmap graphics.
- **Improved import of Microsoft AutoShapes** The StarOffice filter architecture has been enhanced to ensure the import and export of all available Auto-Shapes in Microsoft Office.
- **Improved import of Microsoft PowerPoint content** Microsoft Office and StarOffice use different algorithms to calculate the spacing between paragraphs in presentation docu-

ments. To account for this difference, StarOffice 6.0 software introduces enhancements to the Microsoft PowerPoint import filter.

- **Improved import and export of frames** StarOffice 6.0 supports the new anchor and alignment settings for frames used in Microsoft Word 2000, including horizontal and vertical alignment as well as anchor definitions.
- **Improved import and export of form controls** The Office 97/2000 import and export filters also support the conversion of Microsoft Office controls to StarOffice controls, and vice versa.
- **Improved import and export of charts** The Office 97/2000 import and export filters have been greatly enhanced to facilitate the import and export of charts from Excel to StarOffice Calc 6.0 and vice versa. This includes the content of charts, the format of 2-D and 3-D charts, and the settings for x-, y-, and z-axes and gridlines.

New and enhanced text attributes To further ensure a trouble-free document exchange with Microsoft Office users, StarOffice 6.0 introduces the following new character and paragraph attributes, which are fully supported by the Microsoft import and export filters.

- **Relief** The Relief character attribute has been added to the Font Effects tab of the Character dialog box, enabling users to choose from two Relief options, Embossed and Engraved. These options correspond to the Character Embossed and Character Engraved attributes available in Microsoft Office.
- **Enhanced Underlining** You can now assign character-independent color attributes to the Underlining and Strikethrough font effects.
- **Negative indents** Set negative indents for paragraphs and tables, and specify the first line indent independently from the left indent of a paragraph. In the case of tables, you can specify negative values for the From left alignment option.

New MathType Filter This filter ensures that formulas embedded in a Microsoft Word document are converted from and to MathType when importing from or exporting to a Microsoft Office file format.

Enhanced StarOffice Calc functionality To support the document exchange with Excel users, StarOffice 6.0 introduces the following changes:

- **Percent sign operator in formulas** StarOffice 6.0 software recognizes the percent sign operator in formulas, and formats results as percent values if appropriate. For example,

=1%	= 1%	== 0.01
=(1+2)%	= 3%	== 0.03
=1+16%	= 116%	== 1.16
=1+(2+3)%	= 105%	== 1.05
=1%%	= 0.01	== 0.0001
- **New functions** StarOffice Calc 6.0 includes a wealth of new functions that have been introduced to increase productivity and facilitate the exchange with Excel users. All functions are organized alphabetically by category and can be accessed by selecting Insert > Function or clicking the AutoPilot Function button on the Function bar. The following table summarizes and describes the new functions.

Function	What It Does
ACCRINT	Returns the accrued interest for a security that pays periodic interest.
ACCRINTM	Returns the accrued interest for a security that pays interest at maturity.
AMORDEGRC	Returns the prorated linear depreciation of an asset for each accounting period.
AMORLINC	Returns the prorated linear depreciation of an asset for each accounting period.
BESSELI	Returns the modified Bessel function $I_n(x)$.
BESSELJ	Returns the Bessel function $J_n(x)$.

Function	What It Does
BESSELK	Returns the Bessel function $K_n(x)$.
BESSELY	Returns the Bessel function $Y_n(x)$.
BIN2DEC	Converts a binary number to decimal.
BIN2HEX	Converts a binary number to hexadecimal.
BIN2OCT	Converts a binary number to octal.
COMPLEX	Converts real and imaginary coefficients into a complex number.
CONVERT_ADD	Converts a number from one measurement system to another.
COUPDAYBS	Returns the number of days from the beginning of the coupon period to the settlement date.
COUPDAYS	Returns the number of days in the coupon period that contains the settlement date.
COUPDAYSNC	Returns the number of days from the settlement date to the next coupon date.
COUPNCD	Returns the next coupon date after the settlement date.
COUPNUM	Returns the number of coupons payable between the settlement date and maturity date.
COUPPCD	Returns the previous coupon date before the settlement date
CUMIPMT_ADD	Returns the cumulative interest paid between two periods
CUMPRINC_ADD	Returns the cumulative principal paid between two periods.
DEC2BIN	Converts a decimal number to binary.
DEC2HEX	Converts a decimal number to hexadecimal.
DEC2OCT	Converts a decimal number to octal.
DELTA	Tests whether two numbers are equal.
DISC	Returns the discount rate for a security.
DOLLARDE	Converts a dollar price, expressed as a fraction, into a dollar price, expressed as a decimal number.
DOLLARFR	Converts a dollar price, expressed as a decimal number, into a dollar price, expressed as a fraction.
DURATION_ADD	Returns the annual duration of a security with periodic interest payments.
EDATE	Returns the serial number of the date that is the indicated number of months before or after the start date.
EFFECT_ADD	Returns the effective annual interest rate.
EOMONTH	Returns the serial number of the last day of the month before or after a specified number of months.
ERF	Returns the error function.
ERFC	Returns the complementary error function.
FACTDOUBLE	Returns the double factorial of a number.
FVSCHEDULE	Returns the future value of an initial principal after applying a series of compound interest rates.
GCD_ADD	Returns the greatest common divisor.
GESTEP	Tests whether a number is greater than a threshold value.
HEX2BIN	Converts a hexadecimal number to binary.
HEX2DEC	Converts a hexadecimal number to decimal.
HEX2OCT	Converts a hexadecimal number to octal.
IMABS	Returns the absolute value (modulus) of a complex number.
IMAGINARY	Returns the imaginary coefficient of a complex number.
IMARGUMENT	Returns the argument q , an angle expressed in radians.
IMCONJUGATE	Returns the complex conjugate of a complex number.
IMCOS	Returns the cosine of a complex number.
IMDIV	Returns the quotient of two complex numbers.

Function	What It Does
IMEXP	Returns the exponential of a complex number.
IMLN	Returns the natural logarithm of a complex number.
IMLOG10	Returns the base-10 logarithm of a complex number.
IMLOG2	Returns the base-2 logarithm of a complex number.
IMPOWER	Returns a complex number raised by a real number.
IMPRODUCT	Returns the product of complex numbers.
IMREAL	Returns the real coefficient of a complex number.
IMSIN	Returns the sine of a complex number.
IMSQRT	Returns the square root of a complex number.
IMSUB	Returns the difference of two complex numbers.
IMSUM	Returns the sum of complex numbers.
INTRATE	Returns the interest rate for a fully invested security.
ISEVEN_ADD	Returns true if the number is even.
ISODD_ADD	Returns true if the number is odd.
LCM_ADD	Returns the least common multiple.
MDURATION	Returns the Macauley modified duration for a security with an assumed par.
MROUND	Returns a number rounded to the desired multiple.
MULTINOMIAL	Returns the multinomial of a set of numbers.
NETWORKDAYS	Returns the number of workdays between two dates.
NOMINAL_ADD	Returns the annual nominal interest rate.
OCT2BIN	Converts an octal number to binary.
OCT2DEC	Converts an octal number to decimal.
OCT2HEX	Converts an octal number to hexadecimal.
ODDFPRICE	Returns the price per \$100 face value of a security with an odd last period
ODDFYIELD	Returns the yield of a security with an odd first period
ODDLPRICE	Returns the price per \$100 face value of a security with an odd last period.
ODDLYIELD	Returns the yield of a security with an odd first period.
PRICE	Returns the price per \$100 face value of a security that pays periodic interest.
PRICEDISC	Returns the price per \$100 face value of a discounted security.
PRICEMAT	Returns the price per \$100 face value of a security that pays interest at maturity.
QUOTIENT	Returns the integer portion of a division.
RANDBETWEEN	Returns a random integer number between the numbers you specify.
RECEIVED	Returns the prorated linear depreciation of an asset for each accounting period.
SERIESSUM	Returns the sum of a power series based on the formula.
SQRTPI	Returns the square root of (number * pi).
TBILLEQ	Returns the bond-equivalent yield for a treasury bill.
TBILLPRICE	Returns the price per \$100 face value for a treasury bill.
TBILLYIELD	Returns the yield for a treasury bill.
WEEKNUM_ADD	Returns the week number in year.
WORKDAY	Returns the serial number of the date before or after a specified number of workdays.
XIRR	Returns the yield for a treasury bill.

Function	What It Does
XNPV	Returns the net present value for a schedule of cash flows
YEARFRAC	Returns the year fraction representing the number of whole days between start_date and end_date.
YIELD	Returns the yield on a security that pays periodic interest.
YIELDDISC	Returns the annual yield for a discounted security (for example, a treasury bill)
YIELDMAT	Returns the annual yield of a security that pays interest at maturity

Enhanced Help System

Both newcomers and seasoned StarOffice users will appreciate the ease-of-use of the redesigned StarOffice Help system.

New StarOffice Help window The StarOffice Help system has been completely redesigned with an eye toward providing easier navigation and useful how-to information. The new Help window opens as a separate task, which means you don't lose your digitally earmarked spot when you return to or close documents. The window is divided into a searchable index pane and a viewing pane that displays the contents of the selected index entries.

The index pane features the Index, Find, and Bookmarks tabs. The Index tab lists the active subset of all available help indexes. The Find tab enables users to search for terms that are not individually indexed. The Bookmarks tab enables users to collect and organize a custom set of frequently used help topics.

The viewing pane displays the contents of the selected index entries and provides a toolbar for browsing the help topics you have accessed during the current help session, and printing or bookmarking the topics that are of special interest.



FIGURE 6: Use the new StarOffice Help window to find the answers you need, when you need them

New Help contents Need to learn more about a particular StarOffice module? The index pane features a drop-down list with help topics categorized by StarOffice modules. The contents are

displayed in the viewing area of the StarOffice Help window, and consist of hypertext manuals that provide useful how-to information about the tools and functions of the individual StarOffice modules.

You can access StarOffice Help by pressing the F1 key, or by selecting Contents from the Help menu.

Improved User Interface

The StarOffice 6.0 user interface has been given a face lift. Dialog boxes, tab pages, and menus are redesigned to improve readability and make the application more intuitive to use.

Enhanced menus The StarOffice menus have been enhanced with icons that help you quickly associate menu commands with icons and their corresponding use on toolbar buttons.

New layout To make StarOffice software more intuitive, menus have been updated with new or renamed commands, and dialog boxes are redesigned and resized.

Enhanced dialog boxes StarOffice 6.0 treats all dialog boxes as system windows, which means you can move them outside the current task window to clear the workspace. Furthermore, the size of the standard dialog boxes is increased to facilitate readability and navigation between tab pages.

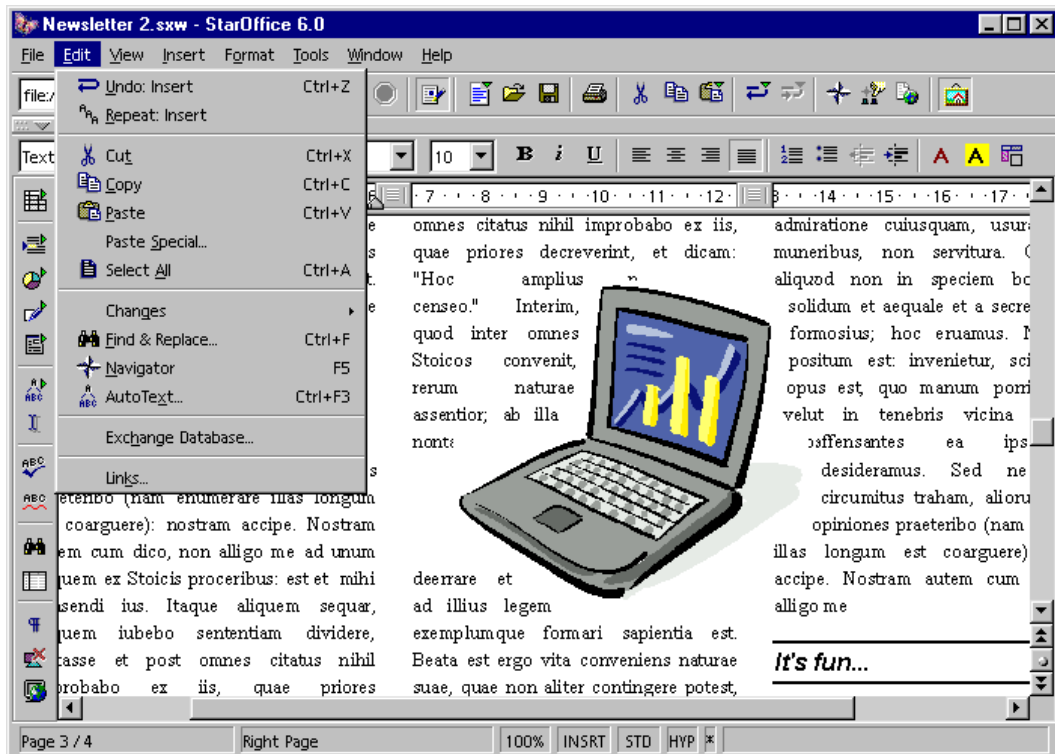


FIGURE 7: StarOffice 6.0 sports a new look, with enhanced dialog boxes and menus.

New Features at a Glance

This section provides an overview of the new features in StarOffice 6.0, categorized by module.

What's New in StarOffice 6.0

Feature	Enables You To...	How to Access
Quick Launch (Microsoft Windows only) New	Easily launch new documents or open existing ones.	Be sure to select the Quick Launch option during setup. Right-click the Quick Launch icon in the Microsoft Windows system tray to launch new documents. Double-click the icon to open the New from Template dialog box.
Dialog boxes as system windows Improved	Enjoy greater freedom when working with StarOffice by moving dialog boxes outside the current StarOffice 6.0 task window.	–
Address Book Source utility New	Integrate LDAP, Mozilla, Netscape 6.x, Microsoft Outlook, and Microsoft Windows system address book sources to facilitate mail merge operations and label creation.	File > Templates > Address Book.
Address Data Source AutoPilot New	Import your existing contacts from Netscape 6.x/Mozilla, LDAP, Microsoft Outlook, Microsoft Windows Address Book, or other data sources. The AutoPilot steps you through the process of selecting an external address book source, specifying relevant type-specific data source settings or address book field mappings for custom address sources, and assigning a name to the new address book.	Opens automatically the first time you launch a StarOffice 6.0 task. File > AutoPilot > Address Data Source.
Send Document as E-mail New	Send any document from within StarOffice as an e-mail attachment using your default e-mail client. You can set your default e-mail client by selecting Tools > Options > StarOffice > External Programs.	File > Send > Document as E-mail.
XML-based file format New	Maintain long-term file format compatibility. Note: Binary StarOffice file formats are still supported.	When saving files, select the Writer 6.0, Calc 6.0, Draw 6.0, Impress 6.0, or Math 6.0 file types, respectively.
Password Encryption New	Protect sensitive information. The new XML-based file format also supports password encryption for text documents and spreadsheets. Passwords are stored as encrypted hash values. When saving files to the old binary format, passwords are not encrypted. However, when loading a document from a former version, the password will be encrypted again.	In Writer 6.0: Insert > Section. In Calc 6.0: Tools > Protect Document.
Document Converter New	Convert binary Microsoft Office and StarOffice documents into the new StarOffice XML file format.	File > AutoPilot > Document Converter.
Advanced HTML export New	Define the text encoding for the HTML export choosing from a variety of character sets, including Unicode, using the new Character Set dialog box in the HTML Compatibility dialog box. Note: When saving a document that contains characters that are not supported by the current character set, the program alerts you to the characters that could not be stored. These characters are then stored as 16-bit Unicode character surrogates in the format <code>&#1234</code> (for example, the Euro symbol in <code>iso-8859-1</code> is stored as <code>&#8364</code>).	Tools > Options > Load/Save > HTML Compatibility.

Feature	Enables You To...	How to Access
MathType filter (Formula Editor only) New	Ensures that formulas embedded in a Microsoft Word document are converted to and from MathType when importing from or exporting to the Microsoft Office file format.	File > Open or File > Save As. Select the filter from the type drop-down list.
MathML filter (Formula Editor) New	Supports import and export for MathML files, the standardized W3 XML file format for equation exchange.	File > Open or File > Save As. Select the filter from the type drop-down list.
Unicode support New	Insert any combination of letters and diacritical marks, as well as special characters from non-Western languages. Note: StarBats and StarMath fonts have been replaced with corresponding characters in the new Unicode character set. Font mapping ensures compatibility with documents that contain StarBats and StarMath fonts.	Insert > Special Character.
Support for Asian languages New	Create multilingual documents using Japanese, Chinese, and Korean language features. For details refer to the section "Improved International and Unicode Support."	Tools > Options > Language Settings > Languages; select the Enabled check box.
International number formats New	Use currency, date, and time formats for a specific locale. For details refer to the section "Improved International and Unicode Support."	To set the default currency: Tools > Options > Language Settings > Languages. To specify date and time formats: Insert > Fields > Other > Document or DocInformation.
Mapping Algorithm for Fonts New	Accurately substitute fonts in documents that are not installed on the system. These fonts are now mapped with a newly implemented algorithm that uses hard-coded internal tables, font family comparison, font metrics, and internal name conventions. This results in better font matching, even across platforms.	Tools > Options > Font Replacement.
Advanced Font Effects New	Apply underlining and strikethrough to strings, not just words. In previous StarOffice versions, these effects could only be applied to alphanumeric characters (for example, <u>e-mail</u>). Now every character (with the exception of spaces) is taken into account when using these effects (for example, <u>e-mail</u>).	Format > Character > Font Effects.
StarOffice Gallery Improved	Drag and drop colorful new clip art, pictures, shapes, and sounds from the StarOffice Gallery into your documents, reports, presentations, and drawings. Toggle between a thumbnail view or list view (complete with path and file names) of the StarOffice Gallery's professionally designed contents. Create your own themes and add contents to this easy-to-use media organizer.	Select Tools > Gallery or click the Gallery button on the Function bar. To toggle Gallery views, use the Detailed View and Icon View buttons on the Gallery toolbar. To add themes, click the New Theme button.
Help New	Search for specific terms and phrases, bookmark frequently accessed information, and quickly get help about every StarOffice function and module using the newly designed Help tool and user interface.	Press F1 key or select Help > Contents.

Feature	Enables You To...	How to Access
Templates and Documents dialog box Improved	Jump-start your projects with professionally designed templates and sample files, including: <ul style="list-style-type: none"> • New templates for business cards as well as business and personal correspondence. • New templates for tracking stocks and sports results. • Enhanced sample files highlight the strengths of StarOffice 6.0. Toggle between a thumbnail preview of the currently selected file and its properties. Organize and manage your templates with ease.	File > New > Templates and Documents. Double-click the Quick Launch icon in the system tray (Microsoft Windows only). To toggle between views, select the Document Properties and Preview buttons on the dialog box's toolbar. To organize templates, click the Organize button.
Page Preview Improved	Preview the layout of your document using the current document window (previously, a new window was opened). (StarOffice Writer 6.0 and Calc 6.0 only.)	File > Page Preview
Paste button (Function bar) Enhanced	Streamline your copy, cut, and paste operations. The Paste button, located on the Function bar, now includes a drop-down menu. Using it, you can choose whether you want to paste the selected text or object in its original format or in a special format. The options correspond to the same Paste Special options that are available when you select Edit > Paste Special.	Select and copy or cut the object you want to paste, and place the insertion point at the new location. Long-click the Paste button on the Function bar.
Undo and Redo buttons (Function bar) Enhanced	Repeat or cancel a specific step. The Undo and Redo buttons, located on the Function bar, now include drop-down menus that enable you to choose from a range of previous undo and redo steps. You can set the number of Undo steps by selecting Tools > Options > StarOffice > General.	Long-click the Undo or Redo button on the Function bar.
Version info for DLLs New	Verify the version of StarOffice DLLs under Microsoft Windows.	Right-click the DLL and select Properties from the context menu.
Automated Proxy settings (Microsoft Windows only) New	Streamline the configuration of StarOffice 6.0 software. When installing StarOffice for Microsoft Windows, the setup routine automatically determines the system's proxy settings and uses them as default.	Automated during the installation of the StarOffice suite.
Quickstarter stops at Setup New	Setup more easily. If a quickstarter is running and the setup is started in maintenance mode to remove, restore or modify the office installation, the quickstarter will be killed without any message.	
New paper sizes New	Use Japanese paper sizes There are three new paper sizes on the tabpage "Format - Page - Page": <ul style="list-style-type: none"> • B4 (JIS) 257 x 364 mm • B5 (JIS) 182 x 257 mm • B6 (JIS) 128 x 182 mm These are Japanese paper sizes for printing.	Format > Page > Page
Avery label support New	Print to industry standard Avery labels.	File > Print > Properties

Feature	Enables You To...	How to Access
New icons New	Identify the functions you need more quickly during installation. The "All selected" and "Partial selected" icons have been modified for easier differentiation.	-
Tools/Options/General New	Reach the option you need quicker. The page Tools/Options/General is split up in two pages as follows: <ul style="list-style-type: none"> • The page "General" contains the settings for "Year (two digits)", "Help Agent", "Open/Save dialogs". • The page "Memory" contains the settings "Undo", "Graphics cache", "Cache for embedded objects" and "Quickstart". 	Tools > Options > General
Language preselection New	Save time upon startup. The Language ListBox now preselects the language the user has selected under Tools/Options/Languages/Languages/Language of Locale settings. This is done each time the application is started. It remembers the selection and the dialog reopens with the last selected language.	Tools > Options > Languages > Asian layout

What's New in StarOffice Writer 6.0

Feature	Enables You To...	How to Access
Encoded Text filter Enhanced	Save Asian language text files. The encoded text filter has been enhanced to include the Chinese, Korean, and Japanese character sets, as well as the Unicode (UTF-8) set. For details on Asian language support refer to the "Improved International and Unicode Support" section.	File > Save As. Select Text (encoded) from the Save as type drop-down list.
Graphics object bar New	Set the graphic attributes (such as graphics mode, RGB, contrast, and so on) of selected graphics from within text, spreadsheet, drawing, and presentation documents. Previously, this feature was available only in StarOffice Image.	Insert or select a bitmap graphic.
Protect Record New	Add password protection to the Record feature. The Record feature is used to make changes visible when two or more people collaborate on the same document.	Edit > Changes > Protect Records.
Section Protection Enhanced	Assign different passwords to individual sections. In previous StarOffice versions, you could use just one password for all sections.	Insert > Section. Format > Section.
AutoFormat functionality Enhanced	Specify whether you want the program to delete blanks and tabs at the beginning or at the end of a paragraph or a line when using the AutoCorrect feature.	Tools > AutoCorrect/ AutoFormat > Options.
Line Numbering Enhanced	Restart the numbering of lines with every new page.	Tools > Line Numbering.
Automatic font color attribute New	Set the font color to your operating system's default font color. If you change the font's background to a dark color, the font will automatically change to white.	Click the Font Color button on the Format object bar and select Automatic. Format > Character > Font > Font Color.
Relief character attribute New	Add 3-D effects to selected text elements. This feature also facilitates the import and export of Microsoft Word documents that contain the Character Embossed and Character Engraved character attributes.	Format > Character > Font Effects.
Underlining Color character attribute New	Specify a color for underlining and strike-through formatting independently from the font color. This feature also facilitates the import and export of Microsoft Word documents.	Format > Character > Font Effects.
Negative indents for paragraphs and tables New	Set negative (left or right) indents to paragraphs and tables, and specify the first line indent independently from the left indent of a paragraph. For tables, you can also set negative values for the left alignment. This enables you to align tables independently of the page setup margins. This feature also facilitates the import and export of Microsoft Word documents.	For paragraphs: Format > Paragraph > Indents & Spacing. For tables: Format > Table > Table.
Border settings for paragraphs and tables New	Set the spacing between a border and its content to zero (0). In former StarOffice versions, there was a restriction for a minimal distance.	For paragraphs: Format > Paragraph > Borders. For tables: Format > Table > Borders.

Feature	Enables You To...	How to Access
Smart URL attributes New	Streamline the process of changing a hyperlink in a document. In StarOffice 6.0, the corresponding URL attribute adapts the new settings automatically. For example, if you change an e-mail address or a URL in a document, the program changes the corresponding mailto-address or the URL target, too. In former versions, these attributes had to be changed manually.	-
Alternate cursor New	More easily recognize when the Overwrite mode is selected. When typing in Overwrite mode, the cursor automatically selects the character that will be overwritten next.	Press Insert on your keyboard or click the INSRT field on the status bar.
Hyphenation rules Enhanced	Define the minimal number of characters for hyphenation.	Tools > Options > Language Settings > Writing Aids.
More flexibility when creating labels New	Modify existing label brands and types, and save them as your own label format.	File > New > Labels > Format.
HTML 4 entities New	Import HTML4 entities. The HTML import of Writer and Calc now supports all HTML4 character entities (like €).	Tools > Option > Load/Save > HTML compatibility
Language support in HTML filter New	Save and Writer's HTML filter now saves and loads language information with the HTML filter.	
Textfilter Improved	<p>More easily access text filters. Because the configuration can't handle any system dependent entries, the concept of StarOffice Writer Text filter has been changed. The specific text filters for MAC, DOS and UNIX are removed; but the functionality can now be reached with the "Text (encoded)" filter.</p> <p>The text filter remains in the filter list and has the old functionality - use the system character set and system line end value, where the Office is installed.</p>	

Feature	Enables You To...	How to Access
Asian text font attributes Improved	<p>Set font attributes for Asian text.</p> <p>The HTML filter now supports the Asian text font attributes, i.e. the Asian font name, size and typeface (bold/italic).</p> <p>If these attributes are contained in styles, and the export settings allow it to make use of CSS, the Asian font attributes are exported as additional CSS rules. Two cases must be differentiated here: Styles that directly correspond to an HTML tag (like 'Heading 1' that corresponds to <H1>) and styles that are derived from such styles.</p> <p>In the first case, a single rule that has a tag (like H1) as selector was exported before this feature change. Now, up to three additional CSS rules are exported. These rules all have the tag (like H1) and one of the classes "western", "cjk" and "ctl" as selector.</p> <p>They contain the font attributes that are specific to western, Asian and complex text. And they are only exported if the attribute settings for western, asian and complex text differ. If they are the same, they remain part of the rule that has a tag as selector only.</p> <p>An example might be</p> <ul style="list-style-type: none"> • H1 { color: #ffff00 } • H1.western { font-family: "Arial" } • H1.cjk { font-family: "HG Mincho" } <p>On import, these rules are merged into the "Heading 1" style again.</p>	-
Smooth underlining New	Underline adjacent portions of text which may have different font sizes or text attributes, i.e. Asian characters next to Western spaces.	New default behavior

What's New in StarOffice Calc 6.0

Feature	Enables You To...	How to Access
ROMAN function New	<p>Convert a value between 0 and 3999 to a Roman style. The function format is =ROMAN(value; mode). "Mode" is an optional parameter to specify the accuracy of the Roman value.</p> <p>For example: ROMAN(999; 0) and ROMAN(999) returns CMXCIX ROMAN(999; 1) returns LMVLIV ROMAN(999; 2) returns XMIX ROMAN(999; 3) returns VMIV ROMAN(999; 4) returns IM</p>	Insert > Function. Enter the function in the Formula bar.
ARABIC function New	<p>Convert a text that represents a Roman number into a value (between 0 and 3999). The function format is =ARABIC(text).</p>	Insert > Function. Enter the function in the Formula bar.
MIRR function New	<p>Calculate the modified internal rate of return for a series of cash flows with interest rates for investments and reinvestments. The function format is =MIRR(values; rate_investment; rate_reinvestment).</p>	Insert > Function. Enter the function in the Formula bar.

Feature	Enables You To...	How to Access
CELL function New	Provide information about content, formatting, or location of a specific cell. The function format is =CELL(info_type; reference). "Info_type" specifies the type of information that should be returned. "Reference" is optional, and determines the cell or cell range to be examined.	Insert > Function Enter the function in the Formula bar.
ISPMT function New	Calculate the interest of a credit or investment with constant redemption rates: =ISPMT(rate; amortization_periods; total_periods; investment).	Insert > Function. Enter the function in the Formula bar.
Analysis Addin New	Provide new analysis functionality and facilitate document exchange with Microsoft Excel users. For more details on these new functions see the "Improved Microsoft Office Interoperability" section.	Insert > Function.
External Data dialog box New	Insert data from external sources (such as linked areas or WebQueries). Using this dialog box, you can specify a file or URL and select one or more of that file's named ranges. If the source is an HTML file loaded with the new WebQuery HTML filter, the names represent the tables in the HTML file. In addition, you can specify an interval for automatic link refresh. To change the settings for a linked area, use the Modify button of the Edit Links dialog box (Edit > Links).	Insert > External Data.
Sort options New	Specify language- and locale-dependent sort options. The default sort option depends on the system language setting and locale.	Data > Sort > Options.
Protect Record New	Add password protection to the Record feature. The Record feature is used to make changes visible when two or more people collaborate on the same document.	Edit > Changes > Protect Records.
Matrix Arrays Improved	Perform complex scientific calculations. The number of elements that can be used in a matrix arra, has been increased. In former versions, this number was limited to 16,384 elements per matrix, while the new limit is 512,000 elements.	--
Print options New	Print spreadsheet documents with two additional options: <ul style="list-style-type: none"> • Suppress output of empty pages: If this option is active, pages that don't contain cell contents or drawing objects are not printed. Cell attributes (such as borders or background color) are an exception to the rule, and don't count as content. • Print only selected sheets: If this option is active, choosing "All" in the print dialog doesn't print the whole document, but only the selected sheets. Similarly, a specified range of pages is counted only within the selected sheets. To specify the default print options, select Tools > Options > Spreadsheet > Print.	File > Print > Options.
Extended String length Improved	Reduce calculation time and use less memory. The maximum string length in formulas has been increased from 255 bytes to 64 kilobytes. This enables the program to handle concatenating strings, where the sum of all lengths is greater than 255 characters. However, literal strings entered directly in a formula (= "hello world") are still limited to 255 characters, including the quotes.	--

Feature	Enables You To...	How to Access
Multiple Operations Improved	Perform multiple operations with greater flexibility. This feature now extends to formulas that contain references to other formulas. Unlike previous StarOffice versions, a multiple operation isn't restricted to acting only on the formula selected in the dialog box. Instead, cell addresses that are indirectly referred to are replaced in every formula encountered during the calculation of a multiple operation.	Data > Multiple Operations.
Percent Sign Operator in formulas Improved	Calculate percentages of results with ease. The percent sign operator is recognized in formulas, and if appropriate, the result is displayed formatted as a percent value. The percent sign operator divides the preceding subexpression by 100. This feature also facilitates collaboration with Microsoft Excel users.	Use in formulas or the Formula bar.
ASCII Import Improved	Recognize English date formats, in addition to the default formats set by the system language, when importing a text file into StarOffice Calc. This enables you to import formats such as 12-Mar-01, independent of the format used by the system language.	File > Open.
Text filter Improved	Import and export 16-bit Unicode text files.	File > Open or File > Save As. Select Text – txt - csv from the file type drop-down list.
Printer Metrics for text formatting New	Solve the problem of different line breaks on print and screen by selecting the line break alignment option for cells. This option shows line breaks as they appear in print on-screen. Note: This option is global to the application, not saved with documents.	Tools > Options > Spreadsheet > General.
Automatic Hyphenation New	Hyphenate text in cells. Note: This option is available only in combination with the Line break option.	Format > Cells > Alignment.
Copy filtering Improved	Use filtering when copying cells. When a cell range containing rows which were filtered out (AutoFilter, Standard filter, Advanced filter) is copied and pasted, only the cells from rows that were not filtered out are used. The same is true for Drag&Copy, pasting from the primary selection, and the API copyRange call (XcellRangeMovement interface). Cut&Paste, Drag&Drop (moving) and the API moveRange method are not affected. Columns or rows that were hidden manually are also not affected.	Tools > Filter > Auto/Standard/Advanced

What's New in StarOffice Impress 6.0 / Draw 6.0

Feature	Enables You To...	How to Access
Crop button New	Access the Crop dialog box with a click of the mouse. This new button is located on the Graphics object bar, which becomes available when you insert or select a bitmap (pixel) graphic.	Click the Crop button on the Graphics object bar.
Rotate option for meta files New	Rotate meta files just like ordinary bitmap graphics.	Format > Position and Size > Rotation.

Feature	Enables You To...	How to Access
Cache buffering New	Set an upper limit (in kilobytes) for the total graphics cache size, as well as cache a single graphic object. If the size of one object exceeds this predefined size, the graphics output is not cached. This means that the graphic is rendered directly on-screen every time you move or access the graphic.	Tools > Options > StarOffice > General.
Print options Enhanced	Access new printing options for graphics that contain transparencies. These include: <ul style="list-style-type: none"> • Reduced Transparency Enables you to treat all transparent objects as nontransparent. If used in combination with the Automatic option, transparency is reduced only if the covered area of replacement is more than 1/4 of the whole page. The No transparency option always reduces transparency completely. • Reduce gradients Decreases the number of gradient steps to the real number set when the gradient was defined. • Reduce bitmaps Prints transparent bitmaps at the maximum resolution (in dpi). • Convert colors to grayscale Renders output in grayscale. 	Tools > Options > StarOffice > Print.
AutoLayout designs (Impress only) New	Create slides for Asian audiences. StarOffice Impress 6.0 includes four new AutoLayouts that support vertical text to complement the new StarOffice 6.0 Asian language features. For details on Asian language support refer to the "Improved International and Unicode Support" section.	Start a new presentation; select design in the Modify Slide dialog box. Format > Modify Layout.
EPS export Enhanced	Export text as glyph outlines. This enables you to export text that contains Chinese, Japanese, Korean, or other double-byte characters to Encapsulated PostScript (EPS).	File > Export. Select EPS from the Save as type drop-down list.
Command Line options (Impress Player) New	Control the StarOffice Impress Player more easily with new command line options: <ul style="list-style-type: none"> • [A a]: Enable/disable automatic slide transition • [L l]: Enable/disable presentation looping • [F f]: Enable/disable full-screen presentation window • K: Enable kiosk mode, which includes -A, -L and -F, as well as forcing the presentation window into the foreground. 	Enter at the command prompt.

What's New in StarOffice Base 6.0

Feature	Enables You To...	How to Access
Database Source Concept New	Manage data sources with ease. Instead of creating and maintaining a proprietary StarOffice database format (.sdb), StarOffice Base 6.0 works only with data sources. StarOffice Base 6.0 connects and administers a wide variety of data sources, and provides data access to all StarOffice components	--

Feature	Enables You To...	How to Access
Data Source Administration dialog box New	Administer the office-wide registered data sources from one location. Using this dialog box, you can build connections to existing data sources, specify (StarOffice Calc or Microsoft Excel) spreadsheet documents as data sources, design and edit database tables, define new queries or edit existing ones and create links to remote data sources.	Tools > Data sources.
Database Table Administration Enhanced	Select individual database tables as well as an entire table container (All tables). If you select a container, all future database tables that are created as part of this source will be automatically available when reconnecting to the data source. Note: When using databases that support version fields, you can indicate the version of data records by selecting the new Display version columns (when available) check box.	Tools > Data sources > Tables.
Data Source Browser New	View the available tables and queries of the connected data sources in a Microsoft Explorer-like tree view. Switching between data sources is as easy as selecting the data source you want in the tree view — the program automatically loads the data in the table grid. Depending on the current selection, the Table view context menu offers commands for editing, copying, and deleting database objects or creating new tables or queries in the design mode. You can toggle the tree view on or off by clicking the Explorer button on the Data Source browser toolbar.	Press the F4 key, or select View > Database.
Database Driver New	Supports access to the operating system's address book, including Microsoft Outlook Express, Microsoft Outlook, Mozilla, and LDAP-compatible address books. You can select the new Addressbook driver from the Database type drop-down list in the Data Source Administration dialog box. To specify the data source, click the Browse button next to the Data source URL text box. Note: Using the Database type drop-down list, you may also specify a spreadsheet as a data source.	Tools > Data Sources.
Database Import AutoPilot New	Import StarOffice 5.2 (or earlier) databases. The Database Import AutoPilot will store your existing StarOffice queries, forms, and reports in the new DataAccess.xml configuration file. Form documents are stored as regular documents. In addition, the Database Import AutoPilot enables you to: <ul style="list-style-type: none"> • Select an individual StarOffice database (sdb) file. • Create a new data source with the settings extracted from the file, so applications can access the data. • Extract the queries from the file and store it in the configuration file or another file you have specified. • Extract the form documents in the file and store them in a directory of your choice. • Substitute StarOffice 5.2 variables for fixed paths. In StarOffice 5.2, you could use the following variables instead of path names when pointing to a data source: <ul style="list-style-type: none"> • \$(USER) • \$(USERURL) • \$(INST) • \$(INSTURL) Note: Reports are not extracted.	File > AutoPilot > StarOffice 5.2 Database Import.

Feature	Enables You To...	How to Access
AutoPilot for Combo and List Boxes Improved	Assign a database table to a combo or list box, in case the form that the control belongs to is not bound to a data source.	Form Functions (on the Main toolbar) > List Box or Combo Box.
AutoFocus for Form Layers New	Set the focus for controls automatically when toggling Design mode on or off. If the automatic control focus is active, the first control of the first logical form element in the document will get the focus. This is useful for forms in a StarOffice document that is used for data entry only (for example, a text document).	Click the Automatic control focus button on the Form Functions toolbar.
Form Events New	Bind macros with ease, using these two new form events: <ul style="list-style-type: none"> • Before reloading: Called before a reload on the form is executed. • Before unloading: Called before the form is unloaded. Previously, these events could be used only with a scripting language.	Form Functions (on the Main toolbar) > Form Properties > Events.
Index Design for Tables New	Edit the indexes of tables. This component has been completely rewritten. A new Index Design button on the Table Design toolbar provides one-click access to Indexes dialog box.	Right-click a table in the Data Sources browser and select Edit Table from the context. Click the Index Design button on the Table Design toolbar.
Use catalog for file-based databases option New	Toggle the catalogs used in file-based ODBC data source on or off. By default, this option is not selected.	Tools > Data Sources > ODBC.
UTF-8 Support New	Use the UTF-8 character set. Note: This support does not extend to ADO (which do not have a character set) or dBase data sources.	Tools > Data Sources.
IBM866 support New	Use the IBM866 character set, also known as cp866 or csIBM866, with dBase and text data sources. This is a Cyrillic character set which had been requested by a number of users.	Tools > Data Sources > dbase > IBM866

What's Different in StarOffice 6.0

If you've used a previous version of StarOffice, you may wonder what happened to some StarOffice features, such as the StarOffice Integrated Desktop or the StarOffice Mail, Image, Chart, and Schedule modules. Customer research indicated that most users of StarOffice software were not taking advantage of certain features. In response to requests, the StarOffice 6.0 suite has been redesigned with a focus on improving the performance of the core module, while giving you the freedom to supplement discontinued StarOffice features with their preferred alternatives.

Module	Previously	What Has Changed
StarOffice Integrated Desktop (including Beamer and Explorer)	Providing a unified desktop work environment, including file and folder management.	StarOffice 6.0 software is seamlessly integrated with supported operating systems, making the integrated desktop superfluous.
StarOffice Chart	Creating and inserting standalone charts.	The charting functionality is fully integrated with all StarOffice modules. As a result, you no longer need a separate charting application. However, you can still load standalone charts created with StarOffice 5.2 or earlier, and insert them into documents as OLE objects. To edit a standalone chart, select Edit > Chart Data.

Module	Previously	What Has Changed
StarOffice Image	Editing and creating bitmap graphics	<p>The StarOffice Image functionality has been merged with StarOffice Writer, Calc, Draw, and Impress.</p> <p>Tiling is no longer available as a single filter. Instead, a check box in the Options dialog enables you to choose if edges should be enhanced (old Mosaic functionality) or not (old Tiling functionality).</p> <p>When loading documents created with StarOffice 5.2 or earlier that contain Image OLE objects, StarOffice 6.0 automatically converts the OLE object into a graphic object. The graphic is extracted based on the data included in the corresponding Image OLE storage.</p>
StarOffice Mail and StarOffice News	Sending and receiving e-mail and reading newsgroups	The StarOffice Mail and News modules have been removed because the majority of StarOffice users were not using these applications frequently. StarOffice 6.0 now uses the default e-mail client (Microsoft Windows) or Netscape™ Messenger (Solaris and Linux) for sending documents as attachments.
StarOffice Schedule	Managing tasks and schedules	An improved tool is being developed and will be available soon. In the meantime, you can continue to use StarOffice 5.2 Schedule.
StarOffice API	Providing third-party tools and building macros	StarOffice 6.0 introduces a new API, which is fully documented in the ODK, available at www.openoffice.org .
StarOffice Writer	Form letter as email	The mail merge function (File > Form Letter) no longer supports email.
StarOffice Writer	--	If the current task window contains an unnamed, unmodified document and a new document is loaded, the new document replaces the unnamed one.
StarOffice Writer	--	StarOffice exits when the last document is closed. To keep StarOffice running, open a new document before closing the last document on which you are working.
StarOffice	Pack n Go functionality removed	Pack n Go functionality has been removed. StarOffice documents are now stored in a compressed industry-standard XML format.
StarOffice (Setup)	--	MS Office file types and HTML editor are registered upon setup.

For More Information

For more product information and to see how large enterprises, small businesses, educators, and individuals are using the StarOffice 6.0 suite of productivity tools, please refer to the *StarOffice 6.0 Product Guide* available at www.sun.com/staroffice.

System Requirements and Availability

The StarOffice 6.0 Suite

To use the StarOffice 6.0 suite, your system must meet the following minimum requirements.

Solaris Operating Environment (SPARC Platform Edition)

- Solaris 7 Operating Environment (SPARC Platform Edition) or higher (Solaris 8 recommended)
- 128-Mbytes RAM
- 250-Mbytes available hard disk space
- X Server with 800 x 600 or higher resolution, with 256 colors

Patches

For patches, go to <http://sunsolve.sun.com>.

- Required for Solaris 7: 106327-08, 106300-09 (64-bit only)
- Required for Solaris 8: 108434-01, 108773-12, 108435-01 (64-bit only)

Solaris Operating Environment (Intel Platform Edition)

- Solaris 7 Operating Environment (Intel Platform Edition) or higher
- Intel Pentium-compatible PC
- 64-Mbytes RAM
- 250-Mbytes available hard disk space
- X Server with 800 x 600 or higher resolution, with 256 colors

Patches

For patches, go to <http://sunsolve.sun.com>

- Required for Solaris 7: 106328-08
- Required for Solaris 8: 108436-01

Linux Platform

- Linux Kernel version 2.2.13 or higher
- glibc2 version 2.1.2 or higher
- Intel Pentium-compatible PC
- 64-Mbytes RAM
- 250-Mbytes available hard disk space
- X Server with 800 x 600 or higher resolution, with 256 colors

Microsoft Windows

- Microsoft Windows 95, 98, ME, NT, 2000, or XP
- Intel Pentium-compatible PC
- 64-Mbytes RAM
- 250-Mbytes available hard disk space
- 800 x 600 or higher resolution graphic device, with 256 colors

To obtain a copy of the StarOffice 6.0 suite, go to www.sun.com/staroffice/.



Sun Microsystems
901 San Antonio Road
Palo Alto, CA 94303

1 (800) 786.7638
1.512.434.1511

www.sun.com/staroffice/