

Sun™ Modular Datacenter S20 Fiber Cable Connector Options Guide

The Sun™ Modular Datacenter S20 (Sun MD) has two data panels for network connections; one on the left side and one on the right side of the Sun MD. Two of the four possible configurations for these data panels use fiber cable connectors. When using fiber cable connectors, you can choose singlemode or multimode connectors. If your data panel was ordered with multimode fiber connectors and you want to switch to singlemode, order the singlemode fiber connector option kit. To switch from singlemode to multimode, order the multimode option kit.

Option Kit Contents

Each fiber connector option kit includes a connector receptacle (assembly, panel gasket, and panel nut) and a weatherproof cap (see [FIGURE 1](#)). You can use either of the following fiber connector options with your Sun MD:

- Singlemode fiber connector option kit (part number X5308A-Z)
- Multimode fiber connector option kit (part number X5309A-Z)

FIGURE 1 Fiber Connector Option Kit Components

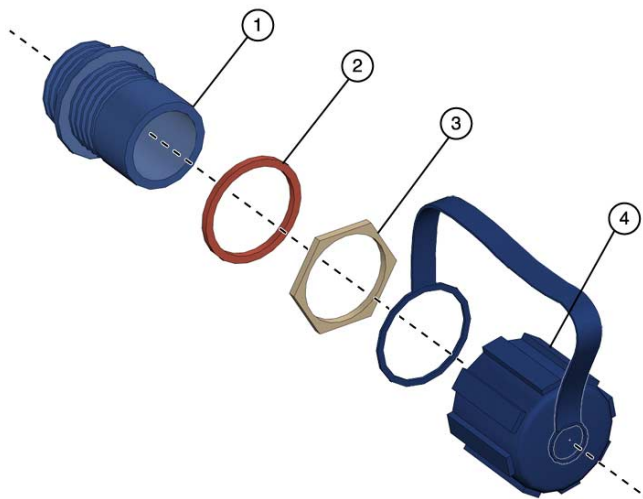


Figure Legend Components illustrated in [FIGURE 1](#)

1	Receptacle assembly	3	Panel nut
2	Panel gasket	4	Weatherproof cap

Removing the Existing Receptacle

Note – Removing a receptacle requires two people; one on the inside of the Sun MD and one on the outside.

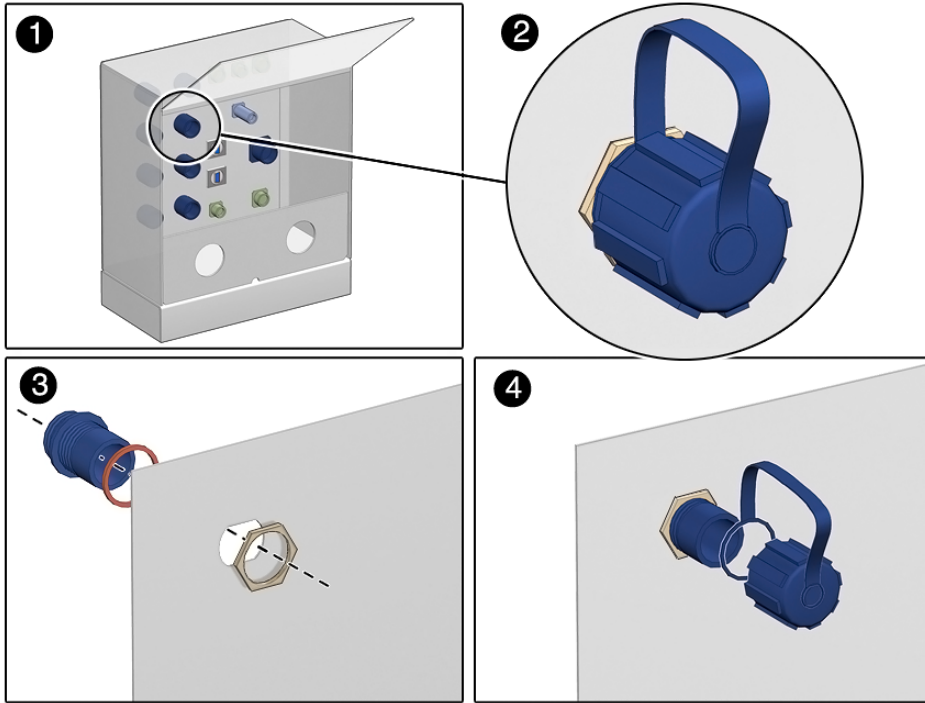
1. Ensure that all appropriate network traffic has been stopped.
2. From the outside of the Sun MD:
 - a. Unlock the data box and lift the data box door.
 - b. Unplug any external cabling from the receptacle that is going to be removed.
 - c. Slide the weatherproof cap over the receptacle.
 - d. Turn the panel nut counter clockwise to unscrew it from the receptacle.
3. From the inside of the Sun MD:
 - a. Use a wrench to loosen the cable fitting from the receptacle, and remove the cable.
 - b. Slowly pull the connector out of the data panel.

Installing the Receptacle

1. From the inside of the Sun MD:
 - a. Slide the panel gasket over the receptacle.
 - b. Slide the receptacle into the opening in the data panel.
2. From the outside of the Sun MD, slide the panel nut over the receptacle, and turn the nut clockwise to tighten it.
3. From the inside of the Sun MD:
 - a. Attach the cable fitting and tighten it with a wrench.
 - b. Connect any cabling that was removed.
4. From the outside of the Sun MD:
 - a. Slide the weatherproof cap over the receptacle.
 - b. Connect any cabling that was removed.
 - c. Close the door to the data box and lock the door.
5. Reset any network traffic that was stopped for this procedure.

FIGURE 2 illustrates the process for installing the receptacle option.

FIGURE 2 Installing the Option Kit



Note – The documents for the Sun MD are available online through a password-protected web site. Contact your Sun Sales Representative for information about accessing the Sun MD product documentation.

Accessing Sun Documentation

You can view, print, or purchase a broad selection of Sun documentation, including localized versions, at:

<http://www.sun.com/documentation>

Third-Party Web Sites

Sun is not responsible for the availability of third-party web sites mentioned in this document. Sun does not endorse and is not responsible or liable for any content, advertising, products, or other materials that are available on or through such sites or resources. Sun will not be responsible or liable for any actual or alleged damage or loss caused by or in connection with the use of or reliance on any such content, goods, or services that are available on or through such sites or resources.

Contacting Sun Technical Support

If you have technical questions about this product that are not answered in this document, go to:

<http://www.sun.com/service/contacting>

Sun Welcomes Your Comments

Sun is interested in improving its documentation and welcomes your comments and suggestions. You can submit your comments by going to:

<http://www.sun.com/hwdocs/feedback>

Please include the title and part number of your document with your feedback:

Sun Modular Datacenter S20 Fibre Channel Connector Options Guide, part number 820-3744-10

Copyright 2008 Sun Microsystems, Inc. All rights reserved.

Copyright 2008 Sun Microsystems, Inc. Tous droits réservés.



Sun Microsystems, Inc.
www.sun.com

Part No. 820-3744-10, Rev. A
January 2008