

Oracle® Integrated Lights Out Manager (ILOM) 3.0

Feature Updates and Release Notes



Copyright © 2009, 2010, Oracle and/or its affiliates. All rights reserved.

This software and related documentation are provided under a license agreement containing restrictions on use and disclosure and are protected by intellectual property laws. Except as expressly permitted in your license agreement or allowed by law, you may not use, copy, reproduce, translate, broadcast, modify, license, transmit, distribute, exhibit, perform, publish, or display any part, in any form, or by any means. Reverse engineering, disassembly, or decompilation of this software, unless required by law for interoperability, is prohibited.

The information contained herein is subject to change without notice and is not warranted to be error-free. If you find any errors, please report them to us in writing.

If this is software or related software documentation that is delivered to the U.S. Government or anyone licensing it on behalf of the U.S. Government, the following notice is applicable:

U.S. GOVERNMENT RIGHTS. Programs, software, databases, and related documentation and technical data delivered to U.S. Government customers are "commercial computer software" or "commercial technical data" pursuant to the applicable Federal Acquisition Regulation and agency-specific supplemental regulations. As such, the use, duplication, disclosure, modification, and adaptation shall be subject to the restrictions and license terms set forth in the applicable Government contract, and, to the extent applicable by the terms of the Government contract, the additional rights set forth in FAR 52.227-19, Commercial Computer Software License (December 2007). Oracle USA, Inc., 500 Oracle Parkway, Redwood City, CA 94065.

This software or hardware is developed for general use in a variety of information management applications. It is not developed or intended for use in any inherently dangerous applications, including applications which may create a risk of personal injury. If you use this software or hardware in dangerous applications, then you shall be responsible to take all appropriate fail-safe, backup, redundancy, and other measures to ensure the safe use. Oracle Corporation and its affiliates disclaim any liability for any damages caused by use of this software or hardware in dangerous applications.

Oracle and Java are registered trademarks of Oracle and/or its affiliates. Other names may be trademarks of their respective owners.

AMD, Opteron, the AMD logo, and the AMD Opteron logo are trademarks or registered trademarks of Advanced Micro Devices. Intel and Intel Xeon are trademarks or registered trademarks of Intel Corporation. All SPARC trademarks are used under license and are trademarks or registered trademarks of SPARC International, Inc. UNIX is a registered trademark licensed through X/Open Company, Ltd.

This software or hardware and documentation may provide access to or information on content, products, and services from third parties. Oracle Corporation and its affiliates are not responsible for and expressly disclaim all warranties of any kind with respect to third-party content, products, and services. Oracle Corporation and its affiliates will not be responsible for any loss, costs, or damages incurred due to your access to or use of third-party content, products, or services.

Copyright © 2009, 2010, Oracle et/ou ses affiliés. Tous droits réservés.

Ce logiciel et la documentation qui l'accompagne sont protégés par les lois sur la propriété intellectuelle. Ils sont concédés sous licence et soumis à des restrictions d'utilisation et de divulgation. Sauf disposition de votre contrat de licence ou de la loi, vous ne pouvez pas copier, reproduire, traduire, diffuser, modifier, breveter, transmettre, distribuer, exposer, exécuter, publier ou afficher le logiciel, même partiellement, sous quelque forme et par quel que procédé que ce soit. Par ailleurs, il est interdit de procéder à toute ingénierie inverse du logiciel, de le désassembler ou de le décompiler, excepté à des fins d'interopérabilité avec des logiciels tiers ou tel que prescrit par la loi.

Les informations fournies dans ce document sont susceptibles de modification sans préavis. Par ailleurs, Oracle Corporation ne garantit pas qu'elles soient exemptes d'erreurs et vous invite, le cas échéant, à lui en faire part par écrit.

Si ce logiciel, ou la documentation qui l'accompagne, est concédé sous licence au Gouvernement des Etats-Unis, ou à toute entité qui délivre la licence de ce logiciel ou l'utilise pour le compte du Gouvernement des Etats-Unis, la notice suivante s'applique :

U.S. GOVERNMENT RIGHTS. Programs, software, databases, and related documentation and technical data delivered to U.S. Government customers are "commercial computer software" or "commercial technical data" pursuant to the applicable Federal Acquisition Regulation and agency-specific supplemental regulations. As such, the use, duplication, disclosure, modification, and adaptation shall be subject to the restrictions and license terms set forth in the applicable Government contract, and, to the extent applicable by the terms of the Government contract, the additional rights set forth in FAR 52.227-19, Commercial Computer Software License (December 2007). Oracle America, Inc., 500 Oracle Parkway, Redwood City, CA 94065.

Ce logiciel ou matériel a été développé pour un usage général dans le cadre d'applications de gestion des informations. Ce logiciel ou matériel n'est pas conçu ni n'est destiné à être utilisé dans des applications à risque, notamment dans des applications pouvant causer des dommages corporels. Si vous utilisez ce logiciel ou matériel dans le cadre d'applications dangereuses, il est de votre responsabilité de prendre toutes les mesures de secours, de sauvegarde, de redondance et autres mesures nécessaires à son utilisation dans des conditions optimales de sécurité. Oracle Corporation et ses affiliés déclinent toute responsabilité quant aux dommages causés par l'utilisation de ce logiciel ou matériel pour ce type d'applications.

Oracle et Java sont des marques déposées d'Oracle Corporation et/ou de ses affiliés. Tout autre nom mentionné peut correspondre à des marques appartenant à d'autres propriétaires qu'Oracle.

AMD, Opteron, le logo AMD et le logo AMD Opteron sont des marques ou des marques déposées d'Advanced Micro Devices. Intel et Intel Xeon sont des marques ou des marques déposées d'Intel Corporation. Toutes les marques SPARC sont utilisées sous licence et sont des marques ou des marques déposées de SPARC International, Inc. UNIX est une marque déposée concédée sous licence par X/Open Company, Ltd.



Contents

Using This Documentation ix

1. ILOM 3.0 Feature Set 1

ILOM 3.0 Feature Set Overview 1

Server-Specific ILOM Features 2

CMM-Specific Features 2

CMM Chassis-Level Management 2

Related ILOM 3.0 Documentation 3

2. Updates to the ILOM 3.0.3 Firmware 5

New Features for ILOM 3.0.3 6

Resolved Issues as of ILOM 3.0.3 7

Alt-Graph Key Functionality on International Keyboards 8

Web Interface Does Not Display the Browse Button When Uploading Files 9

Newly Generated SSH Keys Require SSH Server Restart 9

Loading SSH Host Key Results in Error Message 10

Email Address Using IP Address Is Accepted in Alert Management
Rule Query 10

When Using the CLI to Set the Time Zone, Certain Time Zones Do Not
Recalculate the Clock Correctly (SPARC Servers) 10

Known Issues as of ILOM 3.0.3 11

BIOS Upgrade Is Delayed After SP Reboot	11
External Serial Port Settings Do Not Reset to Default Value	12
Hourly Power Average Timestamp Does Not Account for Increments of Less Than One Hour	13
SSH Keys Fail to Restore After a Backup/Restore	13
3. Updates to the ILOM 3.0.4 Firmware	15
New Features for ILOM 3.0.4	16
Resolved Issues as of ILOM 3.0.4	18
LDAP or RADIUS Commands Do Not Work When Default Role Is Set to none	18
Difficulty Removing dnslocatorquery Records From Active Directory Configuration	19
When Using the CLI to Set the Time Zone, Certain Time Zones Do Not Recalculate the Clock Correctly (x86 Servers)	19
Snapshot Utility Missing Log Files for Debugging	20
ILOM CLI for set / {target} / config dump_uri Does Not Provide Confirmation Message	20
Role Help Text for Read-Only /SYS Properties Is Incorrect	20
Help Text for Power Management Properties Is Incorrect	21
Help Output Results for <TARGET> <property> <property> Is Confusing	21
Inaccurate Help Text Values for /SP/users/root/ssh/key/1-5	22
ILOM External Serial Port Flow Control Is Implemented Incorrectly	23
CLI Auto Completion for Read-Only Properties Does Not Work on Sun Fire X4140, X4240, and X4440 Servers	23
Known Issues as of ILOM 3.0.4	24
ILOM Remote Console Might Hang on Windows Client When Redirecting a CD-ROM Image or Floppy Image	24
Unrecoverable ILOM Remote Console Sessions	25

- 4. Updates to the ILOM 3.0.6 Firmware 27**
 - New Features for ILOM 3.0.6 28
 - Resolved Issues as of ILOM 3.0.6 28
 - Inability to Send SMTP Test Alert Email Notification 29
 - Inability to Navigate From CMM to Server Module After Disabling SSH 29
 - Power Management Events Are Not Recorded in Log File 29
 - Known Issues as of ILOM 3.0.6 30
 - Unable to Retrieve Host Power State After Upgrading ILOM Firmware From 2.0 to 3.0 30
 - Access Page Error Appears After Configuring Unknown Sensor LED Status When Monitoring System From IPMITool 31
 - Console Error Appears After Performing Backup and Restore 31
 - Windows Server 2008 R2 Generates System Event Log Warning Messages When Power Is Being Limited by ILOM Power Management 31
- 5. Updates to ILOM 3.0.8 Firmware 33**
 - New Features for ILOM 3.0.8 34
 - Resolved Issues as of ILOM 3.0.8 35
 - Invalid Time Zone Settings in ILOM CLI 35
 - Snapshot Properties Are Not Persistent After a Reset 36
 - Known Issues as of ILOM 3.0.8 36
 - Storage Redirection Not Supported With 64-bit JRE 37
 - 5-Minute Delay to View Storage Monitoring Information 37
 - ILOM Version Not Shown When Using HIA to Upgrade ILOM From an Inband Management Interface 38
- 6. Updates to ILOM 3.0.9 Firmware 39**
 - New Features for ILOM 3.0.9 40
 - Resolved Issues as of ILOM 3.0.9 41
 - Unrecoverable ILOM Remote Console Sessions 41
 - Known Issues as of ILOM 3.0.9 43

	DIMM FRU Data Fields Are Null After Downgrading or Upgrading SP Firmware Between 3.0.3 and 3.0.9	43
	Invalid Help Command (<code>help /SP system_contact=test</code>) Results in Unusable Output	44
	Service Snapshot Utility Unable to Collect SP Data When IE Web Browser Security Option Is Enabled	44
7.	Updates to ILOM 3.0.10 Firmware	45
	New Features for ILOM 3.0.10	46
	Resolved Issues as of ILOM 3.0.10	47
	Invalid Help Command (<code>help /SP system_contact=test</code>) Results in Unusable Output	47
	IPMItool <code>sunoem</code> CLI Might Be Denied If All Session Slots Are Busy	48
	Known Issues as of ILOM 3.0.10	48
	DVD Redirection From Solaris Client to RHEL Host Requires Manual Mount	49
	Storage Redirection CLI Service Requires 32-bit JDK to Successfully Start	50
	ILOM Remote Console Requires 32-bit JDK to Successfully Launch	52
	ILOM Web Interface Unable to Connect to SP When Using Internet Explorer 6	54
8.	Updates to ILOM 3.0.12 and ILOM 3.0.14 Firmware	55
	New Features for ILOM 3.0.12 and ILOM 3.0.14	56
	Resolved Issues as of ILOM 3.0.14	57
	BIOS Upgrade Is Delayed After SP Reboot	58
	External Serial Port Settings Do Not Reset to Default Value	58
	Hourly Power Average Timestamp Does Not Account for Increments of Less Than One Hour	59
	ILOM Remote Console Might Hang on Windows Client When Redirecting a CD-ROM Image or Floppy Image	59
	Unable to Retrieve Host Power State After Upgrading ILOM Firmware From 2.0 to 3.0	59

Access Page Error Appears After Configuring Unknown Sensor LED Status When Monitoring System From IPMITool	60
Console Error Appears After Performing Backup and Restore	60
Windows Server 2008 R2 Generates System Event Log Warning Messages When Power Is Being Limited by ILOM Power Management	60
5-Minute Delay to View Storage Monitoring Information	61
ILOM Version Not Shown When Using HIA to Upgrade ILOM From an Inband Management Interface	61
DIMM FRU Data Fields Are Null After Downgrading or Upgrading SP Firmware Between 3.0.3 and 3.0.9	61
Service Snapshot Utility Unable to Collect SP Data When IE Web Browser Security Option Is Enabled	62
Updated Documentation Describing Storage Redirection 32-bit JDK Requirement	62
Updated Documentation Describing ILOM Remote Console 32-bit JDK Requirement	62
DVD Redirection From Solaris Client to RHEL Host Requires Manual Mount	63
ILOM Web Interface Unable to Connect to SP When Using Internet Explorer 6	63
Known Issues as of ILOM 3.0.14	64

Using This Documentation

This Feature Updates and Release Notes guide describes enhancements that have been made to Oracle Integrated Lights Out Manager (ILOM) firmware since the ILOM 3.0 release.

ILOM updated versions are typically released every two to three months. New ILOM 3.0.x features that are common to all rackmount servers and server modules (blades) are described in this guide. Specifically, each chapter in the guide documents the new ILOM features and issues for each new ILOM 3.0.x release.

This document is written for system administrators who are familiar with networking concepts and basic system management protocols.

Related Documentation

To fully understand the information that is presented in this guide, use this document in conjunction with the documents listed in the following table. These documents are available online at:

<http://docs.sun.com/app/docs/prod/int.lights.mgr30#hic>

The following table lists the ILOM 3.0 Documentation Collection

Title	Content	Part Number	Format
<i>Oracle Integrated Lights Out Manager (ILOM) 3.0 Concepts Guide</i>	Information that describes ILOM features and functionality	820-6410	PDF HTML
<i>Oracle Integrated Lights Out Manager (ILOM) 3.0 Getting Started Guide</i>	Information and procedures for network connection, logging in to ILOM for the first time, and configuring a user account or a directory service	820-5523	PDF HTML
<i>Oracle Integrated Lights Out Manager (ILOM) 3.0 Web Interface Procedures Guide</i>	Information and procedures for accessing ILOM functions using the ILOM web interface	820-6411	PDF HTML
<i>Oracle Integrated Lights Out Manager (ILOM) 3.0 CLI Procedures Guide</i>	Information and procedures for accessing ILOM functions using the ILOM CLI	820-6412	PDF HTML
<i>Oracle Integrated Lights Out Manager (ILOM) 3.0 Management Protocols Reference Guide*</i>	Information and procedures for accessing ILOM functions using SNMP, IPMI, or WS-Man and CIM	820-6413	PDF HTML
<i>Oracle Integrated Lights Out Manager (ILOM) CMM Administration Guide for Sun Blade 6000 and Sun Blade 6048 Modular Systems</i>	Information and procedures for accessing CMM-specific ILOM functions	820-0052	PDF HTML
<i>Oracle Integrated Lights Out (ILOM) 3.0 Manager Supplement</i>	Platform-specific ILOM supplement document that identifies the support for common or platform-specific features in ILOM 3.0	<i>See the platform documentation collection for your server</i>	PDF HTML

* As of ILOM 3.0.8, the procedures guide for SNMP and IPMI was renamed to *Oracle Integrated Lights Out Manager (ILOM) 3.0 Management Protocols Reference Guide*.

In addition to the ILOM 3.0 Documentation Collection, an associated ILOM Supplement guide or Administration guide presents ILOM features and tasks that are specific to the server platform you are using. Use the ILOM 3.0 Documentation Collection in conjunction with the ILOM Supplement or platform Administration guide that comes with your server platform.

Translated versions of some of the ILOM documents are available at the web site listed above this table. English documentation is revised more frequently and might be more up to date than the translated documentation.

Documentation, Support, and Training

These sites provide additional resources:

- Documentation: <http://docs.sun.com/>
- Support: <http://www.sun.com/support/>
- Training: <http://www.sun.com/training/>

Documentation Comments

Submit comments about this document by clicking the Feedback[+] link at:

<http://docs.sun.com>

Please include the title and part number of your document with your feedback:

Oracle Integrated Lights Out Manager (ILOM) 3.0 Feature Updates and Release Notes,
part number 820-7329-17

ILOM 3.0 Feature Set

This chapter includes the following information about the Oracle ILOM 3.0 feature set:

- [“ILOM 3.0 Feature Set Overview” on page 1](#)
 - [“Server-Specific ILOM Features” on page 2](#)
 - [“CMM-Specific Features” on page 2](#)
 - [“CMM Chassis-Level Management” on page 2](#)
- [“Related ILOM 3.0 Documentation” on page 3](#)

ILOM 3.0 Feature Set Overview

The Oracle ILOM 3.0 feature set provides common ILOM functionality that applies to all Oracle Sun Blade Modular Systems, server modules (blades), and rackmount servers. These features are built into the ILOM 3.0.x firmware that is installed on the server service processor (SP) and, if applicable, on the chassis monitoring module (CMM).

Note – CMMs are applicable to Oracle Sun Blade Modular Systems. CMMs are not applicable to Oracle rackmount servers.

Server-Specific ILOM Features

The ILOM 3.0.x SP firmware operates on many Oracle server platforms, supporting features that are common to all platforms, as well as other features that are specific to an Oracle server. For additional information about the ILOM 3.0.x features that are supported specifically for your server, see the ILOM Supplement guide or Administration guide that is provided for your server.

CMM-Specific Features

The ILOM 3.0 firmware on the chassis monitoring module (CMM) is configured with an individual IP address assigned either statically or dynamically using DHCP. The CMM acts as a conduit to the server module ILOM configuration, enabling settings such as network addresses and administrative user accounts to be configured or viewed.

In addition, the CMM supports HTTP and CLI "pass-through" interfaces that provide access to all chassis features through a direct serial port connection or a 10/100/1000-BASE-T network management port connection on the CMM.

CMM Chassis-Level Management

ILOM on the CMM offers a tiered management architecture that enables system management of individual components or aggregated management of components at the chassis level.

A summary of the CMM's management functions include:

- Implementation of an IPMI satellite controller, making the chassis environmental sensors visible to the server module's BMC functions
- Direct environmental and inventory management using CLI, web, SNMP, and IPMI interfaces
- Firmware management of CMM, network express module (NEM), and server module SPs
- Pass-through management of server modules and HTTP links along with CLI SSH contexts
- Chassis power control
- Access to the following components:
 - Chassis
 - Power supplies
 - Fans
 - Network express modules (NEMs)
 - Server module SPs

Related ILOM 3.0 Documentation

This guide describes new features and issues that are part of a new ILOM 3.0.x release. Each chapter in this guide provides cross-references to the documents in the ILOM 3.0 Documentation Collection in which the ILOM features associated with new ILOM firmware updates are described in detail.

To fully understand the information that is presented in this guide, use this document in conjunction with the documents listed in “[Related Documentation](#)” on [page ix](#). These documents are available online at:

<http://docs.sun.com/app/docs/prod/int.lights.mgr30#hic>

First read the ILOM 3.0 Concepts Guide to learn about ILOM’s features and functionality. To set up a new system supported by ILOM, refer to the ILOM 3.0 Getting Started Guide, where you will find the procedures for connecting to the network, logging in to ILOM for the first time, and configuring a user account or directory service. Then, decide which ILOM interface you want to use to perform other ILOM tasks. You can now refer to the appropriate ILOM 3.0 Procedures Guide for your selected interface.

For platform-specific ILOM updates, refer to your ILOM Supplement guide or Administration guide, which presents ILOM features and tasks that are specific to the server platform you are using. The ILOM Supplement guide or Administration guide is part of the documentation set for your server.

Updates to the ILOM 3.0.3 Firmware

This chapter describes the new features and functionality that have been added to the Oracle ILOM 3.0.3 firmware release. Procedures to implement the new functionality are explained. Resolved issues and known issues are also described. In addition, references to the ILOM 3.0 documents in which the new features are described in detail are provided.

Topics in the chapter include:

- [“New Features for ILOM 3.0.3” on page 6](#)
- [“Resolved Issues as of ILOM 3.0.3” on page 7](#)
- [“Known Issues as of ILOM 3.0.3” on page 11](#)

New Features for ILOM 3.0.3

The following table identifies new features available in the ILOM 3.0.3 release. References to the appropriate guides in the ILOM 3.0 Documentation Collection that describe the features are also provided.

Topics	
Description	Refer To:
Updated CMM chassis management view and documentation	<ul style="list-style-type: none">• <i>Oracle Integrated Lights Out Manager (ILOM) 3.0 Web Interface Procedures Guide</i>, Web Interface Overview
Enhanced CMM power management metrics	<ul style="list-style-type: none">• <i>Oracle Integrated Lights Out Manager (ILOM) 3.0 Concepts Guide</i>, Power Monitoring and Management of Hardware Interfaces
Enhanced feature for displaying the history of platform-specific power consumption	<ul style="list-style-type: none">• <i>Oracle Integrated Lights Out Manager (ILOM) 3.0 CLI Procedures Guide</i>, Power Monitoring and Management of Hardware Interfaces• <i>Oracle Integrated Lights Out Manager (ILOM) 3.0 Web Interface Procedures Guide</i>, Power Monitoring and Management of Hardware Interfaces
Enhanced feature to override the boot device settings in BIOS using the ILOM CLI or web interface	<ul style="list-style-type: none">• <i>Oracle Integrated Lights Out Manager (ILOM) 3.0 Concepts Guide</i>, Remote Host Management Options• <i>Oracle Integrated Lights Out Manager (ILOM) 3.0 CLI Procedures Guide</i>, Managing Remote Hosts Power States• <i>Oracle Integrated Lights Out Manager (ILOM) 3.0 Web Interface Procedures Guide</i>, Managing Remote Hosts Power States

Topics

Description	Refer To:
Updated information for clearing faults from the event log after fixing a faulted component	<ul style="list-style-type: none">• <i>Oracle Integrated Lights Out Manager (ILOM) 3.0 Concepts Guide, System Monitoring and Alert Management</i>• <i>Oracle Integrated Lights Out Manager (ILOM) 3.0 CLI Procedures Guide, Monitoring System Components</i>• <i>Oracle Integrated Lights Out Manager (ILOM) 3.0 Web Interface Procedures Guide, Monitoring System Components</i>
Enhanced web pages with jump links	<ul style="list-style-type: none">• <i>Oracle Integrated Lights Out Manager (ILOM) 3.0 Web Interface Procedures Guide, Web Interface Overview</i>
New data collection options for Snapshot Utility	<ul style="list-style-type: none">• <i>Oracle Integrated Lights Out Manager (ILOM) 3.0 Concepts Guide, Remote Hosts Diagnostics for x86 and SPARC Systems</i>• <i>Oracle Integrated Lights Out Manager (ILOM) 3.0 CLI Procedures Guide, Performing Remote Host System Diagnostics</i>• <i>Oracle Integrated Lights Out Manager (ILOM) 3.0 Web Interface Procedures Guide, Performing Remote Host System Diagnostics</i>

Resolved Issues as of ILOM 3.0.3

This section describes the issues that have been resolved as of ILOM 3.0.3. Specific change request (CR) identification numbers and workarounds for the issues are provided, where available.

Topics

Description	Links
ILOM Remote Console resolved issue	<ul style="list-style-type: none">• “Alt-Graph Key Functionality on International Keyboards” on page 8
User management resolved issue	<ul style="list-style-type: none">• “Web Interface Does Not Display the Browse Button When Uploading Files” on page 9

Topics

Description	Links
SSH host keys resolved issues	<ul style="list-style-type: none">• “Newly Generated SSH Keys Require SSH Server Restart” on page 9• “Loading SSH Host Key Results in Error Message” on page 10
Alert management known issue	<ul style="list-style-type: none">• “Email Address Using IP Address Is Accepted in Alert Management Rule Query” on page 10
System clock setting resolved issue for SPARC servers	<ul style="list-style-type: none">• “When Using the CLI to Set the Time Zone, Certain Time Zones Do Not Recalculate the Clock Correctly (SPARC Servers)” on page 10

Alt-Graph Key Functionality on International Keyboards

When running certain versions of the ILOM Remote Console on a client, the Alt-Graph key works incorrectly on international keyboards.

This problem was addressed in two phases:

1. **Workaround:** A Workaround is provided that adds a short-cut key combination (`ALT-z`) for toggling on or off the "Right Alt" Keyboard menu item in ILOM Remote Console. This Workaround does not depend on a specific version of the Java Development Kit (JDK). However, this Workaround is limited in that it is not possible to send the `ALT-GR` key directly. To use the Workaround, you must be running a version of ILOM Remote Console that contains the supported short-cut key (`ALT-z`).
2. **Complete Solution:** This solution sends the `ALT-GR` key directly without any special Remote Console menu options or intervention. However, it requires using a more recent version of the JDK. To use the Complete Solution, you must be running a version of ILOM Remote Console that sends the `ALT-GR` key directly. The following JDK requirements also apply to the Complete Solution:
 - For Windows, use JDK 1.5 or higher.
 - For Solaris and Linux, use JDK 1.6 update 10 or higher.

You can use the `ILOM version` command to determine which version of ILOM is running on a platform.

Note – Linux and Solaris versions of ILOM 3.0.x contain both the Workaround and Complete Solution. Windows versions of ILOM 3.0.x contain the functionality as described for the Complete Solution, but not the Workaround.

Web Interface Does Not Display the Browse Button When Uploading Files

CR 6787083

Issue: In earlier versions of ILOM, a configuration page did not display the Browse option to upload an SSL certificate in the following situations:

- When uploading a different SSL certificate and key for HTTPS access
- When configuring an optional certificate for LDAP/SSL
- When configuring an optional certificate for Active Directory
- When configuring user SSH keys
- When configuring backup and restore operations

Clicking the Upload button to obtain an SSL certificate prompted a new window to appear; however, you were unable to select and upload a file.

Update: This issue is fixed in the ILOM 3.0.3 release. The Browse option to upload an SSL certificate is now available.

Newly Generated SSH Keys Require SSH Server Restart

CR 6781487

Issue: When you are generating a new SSH key, you do not need to restart the SSH server for the new key to take effect. The new SSH key will become immediately available for new connections.

Update: SSH keys are now available for new connections immediately without a server restart as a ILOM 3.0.3.

Loading SSH Host Key Results in Error Message

CR 6776200

Issue: In earlier versions of ILOM, using the `load` command to upload an SSH host key might result in a `set: Command Failed` error message, even when the SSH host key was uploaded successfully. This error message no longer appears in ILOM 3.0.3 and later versions.

Update: This issue is fixed in the ILOM 3.0.3 release.

Email Address Using IP Address Is Accepted in Alert Management Rule Query

CR 6776214

Issue: When using ILOM's alert management feature, previous versions of ILOM required you to use a host name-based email address. You can now send an email alert using an IP address.

Update: A separate check for IP-based email addresses has been added to the ILOM 3.0.3 release so that if the original validation fails, the system will then check specifically for an email with an IP address.

When Using the CLI to Set the Time Zone, Certain Time Zones Do Not Recalculate the Clock Correctly (SPARC Servers)

CR 6798875

Issue: When using the CLI to set the time zone, some time zones either do not recalculate the clock correctly or update the time zone setting on the clock.

Update: As of ILOM 3.0.3.20b this issue has been fixed for SPARC servers.

You must use valid global time zone nomenclature to set the time zone to recalculate the clock correctly. You can find a list of the valid global time zone nomenclature on the Internet, for example, at:

http://en.wikipedia.org/wiki/List_of_zoneinfo_time_zones

Examples:

- To set the SP clock time zone property value to the US standard eastern zone, you would type:

```
-> set /SP/clock/ timezone=America/New_York
```

or

- To set the SP clock time zone property value to the US central time zone, you would type:

```
-> set /SP/clock/ timezone=America/Chicago
```

Known Issues as of ILOM 3.0.3

This section describes the known issues as of ILOM 3.0.3. The following table identifies the known issues and points you to the sections that describe the issues. Specific change request (CR) numbers and workarounds or updates for the issues are provided, where available.

Topics

Description	Links
Unexpected BIOS behavior	<ul style="list-style-type: none">• “BIOS Upgrade Is Delayed After SP Reboot” on page 11
Unexpected behavior when resetting to defaults	<ul style="list-style-type: none">• “External Serial Port Settings Do Not Reset to Default Value” on page 12
Hourly timestamp behavior	<ul style="list-style-type: none">• “Hourly Power Average Timestamp Does Not Account for Increments of Less Than One Hour” on page 13
SSH keys are not loaded	<ul style="list-style-type: none">• “SSH Keys Fail to Restore After a Backup/Restore” on page 13

BIOS Upgrade Is Delayed After SP Reboot

CR 6813514

Issue: When you upgrade the SP firmware, you can choose to upgrade the BIOS firmware immediately or to delay the BIOS upgrade until a later time. If you choose to immediately upgrade the BIOS, the SP firmware is upgraded, the host is forced to power off, and the SP reboots. If you choose to delay the BIOS upgrade, the SP firmware is upgraded and the SP reboots.

Regardless of your choice, the BIOS is not programmed immediately. Instead, the SP reboots the new 3.0.x image and waits for the host to power off. The host will be powered off if you chose the immediate BIOS upgrade option and will begin to program the host BIOS. This process can take two to five minutes to complete.

However, two issues can occur:

- **Issue 1:** If you chose the immediate BIOS upgrade option, while the host BIOS is being programmed, there is no indication that the BIOS upgrade is being programmed. If you power on the host while the BIOS is being programmed, the BIOS will become garbled and the host will not boot. The solution is to power off the host, wait two to five minutes for the SP to program the BIOS, then power on the host.
- **Issue 2:** If you chose the delayed BIOS option and do not power off the host, the BIOS will not be upgraded. The host must be powered off for the SP to program the BIOS. If you simply reboot the host, the old BIOS will still be present. Mismatched BIOS and SP firmware might result in incorrect system behavior.

Workaround: It is strongly recommended that you power off the host as soon as possible following an SP firmware upgrade, and wait at least five minutes before rebooting the system.

External Serial Port Settings Do Not Reset to Default Value

CR 6676339

Issue: The `reset_to_defaults` command enables a user to reset the ILOM configuration back to the default values. However, external serial port settings are not reset when `reset_to_defaults` action is performed.

Workaround: Use the CLI or web interface to set the external port settings to the desired values before rebooting ILOM. The external serial port settings can be accessed by typing `/SP/serial/external` in the CLI or by selecting Configuration --> Serial Port in the web interface.

Hourly Power Average Timestamp Does Not Account for Increments of Less Than One Hour

CR 6803961

Issue: When logging in to a CMM using the CLI, the hourly power history includes an entry with a timestamp one hour into the future. This entry shows the average power from the prior timestamp to the current moment.

Workaround: None.

The power average timestamp is not a "rolling average" of the last minute or hour. Instead, ILOM selects a starting point in time (call it time 0). At 60 seconds, ILOM records the first minute average. For the next 59 seconds there would be no change, then at time 120, ILOM records the second minute average. The last minute average is the average of the most recent minute, and not the average of the last minute the sensor was readable.

For the hour average, no samples are taken until time 3600 when the first one-hour average is recorded. ILOM records the second hour average at time 7200.

The last 60 one-minute averages will not equal the last one-hour average, unless you compare it with the exact correct time when the most recent hourly average was stored.

Note that the hourly minimum and maximum average can have a later timestamp than the minute averages. This occurs when ILOM does not record data, which only happens if the sensor is no longer readable (power has been turned off, or has dropped too low to measure). In this instance, ILOM records "no data" while the sensor is unreadable to ensure that the historical data is not lost.

SSH Keys Fail to Restore After a Backup/Restore

CR 6808138

Issue: When backing up and restoring an ILOM configuration, RSA and DSA private keys that exist under `/SP/services/ssh/keys` or `/CMM/services/ssh/keys` fail to restore.

Workaround: When a new key is generated on the SP, this message appears:

```
Warning: the RSA host key for 'xxx.xxx.xxx.xxx' differs
from the key for the IP address 'xxx.xxx.xxx.xxx'
Offending key for IP in ~/.ssh/known_hosts:216
Matching host key in ~/.ssh/known_hosts:189
```

```
Are you sure you want to continue connecting (yes/no)?
```

Type **yes** or edit the `known_hosts` file.

Updates to the ILOM 3.0.4 Firmware

This chapter describes the new features and functionality that have been added to the Oracle ILOM 3.0.4 firmware release. Procedures to implement the new functionality are explained. Resolved issues and known issues are also described. In addition, references to the ILOM 3.0 documents in which the new features are described in detail are provided.

Topics in the chapter include:

- [“New Features for ILOM 3.0.4” on page 16](#)
- [“Resolved Issues as of ILOM 3.0.4” on page 18](#)
- [“Known Issues as of ILOM 3.0.4” on page 24](#)

New Features for ILOM 3.0.4

The following table identifies new features available in the ILOM 3.0.4 release. References to the appropriate guides in the ILOM 3.0 Documentation Collection that describe the features are also provided.

Topics

Description	Refer To:
New power management layout and threshold control	<ul style="list-style-type: none">• <i>Oracle Integrated Lights Out Manager (ILOM) 3.0 CLI Procedures Guide, Power Monitoring and Management of Hardware Interfaces</i>• <i>Oracle Integrated Lights Out Manager (ILOM) 3.0 Web Interface Procedures Guide, Power Monitoring and Management of Hardware Interfaces</i>
Updated idle time setting for a CLI session	<ul style="list-style-type: none">• <i>Oracle Integrated Lights Out Manager (ILOM) 3.0 CLI Procedures Guide, Logging In to and Out of ILOM</i>
New target added for LDAP/SSL authentication attributes	<ul style="list-style-type: none">• <i>Oracle Integrated Lights Out Manager (ILOM) 3.0 CLI Procedures Guide, Managing User Accounts</i>• <i>Oracle Integrated Lights Out Manager (ILOM) 3.0 Web Interface Procedures Guide, Managing User Accounts</i>
New ability to download SNMP MIBs from ILOM	<ul style="list-style-type: none">• <i>Oracle Integrated Lights Out Manager (ILOM) 3.0 CLI Procedures Guide, Managing System Alerts</i>• <i>Oracle Integrated Lights Out Manager (ILOM) 3.0 Web Interface Procedures Guide, Managing System Alerts</i>• <i>Oracle Integrated Lights Out Manager (ILOM) 3.0 Management Protocols Reference Guide, SNMP Overview</i>
New ability to display user roles that are assigned to a user session	<ul style="list-style-type: none">• <i>Oracle Integrated Lights Out Manager (ILOM) 3.0 CLI Procedures Guide, Managing User Accounts</i>• <i>Oracle Integrated Lights Out Manager (ILOM) 3.0 Web Interface Procedures Guide, Managing User Accounts</i>
Enhanced expanded search mode in Active Directory	<ul style="list-style-type: none">• <i>Oracle Integrated Lights Out Manager (ILOM) 3.0 CLI Procedures Guide, Managing User Accounts</i>• <i>Oracle Integrated Lights Out Manager (ILOM) 3.0 Web Interface Procedures Guide, Managing User Accounts</i>

Topics

Description	Refer To:
Enhanced test alert when setting IPMI traps, Email alerts, or SNMP traps	<ul style="list-style-type: none">• <i>Oracle Integrated Lights Out Manager (ILOM) 3.0 CLI Procedures Guide, Managing System Alerts</i>• <i>Oracle Integrated Lights Out Manager (ILOM) 3.0 Web Interface Procedures Guide, Managing System Alerts</i>
New locking ability for the ILOM Remote Console	<ul style="list-style-type: none">• <i>Oracle Integrated Lights Out Manager (ILOM) 3.0 Concepts Guide, ILOM Network Configurations</i>• <i>Oracle Integrated Lights Out Manager (ILOM) 3.0 CLI Procedures Guide, Managing Remote Hosts Storage Redirection and Securing the ILOM Remote Console</i>• <i>Oracle Integrated Lights Out Manager (ILOM) 3.0 Web Interface Procedures Guide, Managing Remote Hosts Redirection and Securing the ILOM Remote Console</i>
New ILOM SP network ports	<ul style="list-style-type: none">• <i>Oracle Integrated Lights Out Manager (ILOM) 3.0 Concepts Guide, ILOM Network Configurations</i>
Updated mouse mode setting for remote host KVMS	<ul style="list-style-type: none">• <i>Oracle Integrated Lights Out Manager (ILOM) 3.0 CLI Procedures Guide, CLI Command Reference</i>• <i>Oracle Integrated Lights Out Manager (ILOM) 3.0 Web Interface Procedures Guide, Managing Remote Hosts Redirection and Securing the ILOM Remote Console</i>

Resolved Issues as of ILOM 3.0.4

This section describes the issues that have been resolved in the ILOM 3.0.4 release. Specific change request (CR) identification numbers and workarounds for the issues are provided, where available.

Topics

Description	Links
User management resolved issues	<ul style="list-style-type: none">• “LDAP or RADIUS Commands Do Not Work When Default Role Is Set to none” on page 19• “Difficulty Removing dnslocatorquery Records From Active Directory Configuration” on page 19
System clock setting resolved issue	<ul style="list-style-type: none">• “When Using the CLI to Set the Time Zone, Certain Time Zones Do Not Recalculate the Clock Correctly (x86 Servers)” on page 19
Power management resolved issue	<ul style="list-style-type: none">• “Help Text for Power Management Properties Is Incorrect” on page 21
Snapshot SP data resolved issue	<ul style="list-style-type: none">• “Snapshot Utility Missing Log Files for Debugging” on page 20
ILOM backup CLI feature resolved issue	<ul style="list-style-type: none">• “ILOM CLI for set /{target}/config dump_uri Does Not Provide Confirmation Message” on page 20
CLI Help text function resolved issues	<ul style="list-style-type: none">• “Role Help Text for Read-Only /SYS Properties Is Incorrect” on page 20• “Help Output Results for <TARGET> <property> <property> Is Confusing” on page 21• “Inaccurate Help Text Values for /SP/users/root/ssh/key/1-5” on page 22
Serial port setting in CLI resolved issue	<ul style="list-style-type: none">• “ILOM External Serial Port Flow Control Is Implemented Incorrectly” on page 23
CLI read-only properties resolved issue	<ul style="list-style-type: none">• “CLI Auto Completion for Read-Only Properties Does Not Work on Sun Fire X4140, X4240, and X4440 Servers” on page 23

LDAP or RADIUS Commands Do Not Work When Default Role Is Set to none

CR 6804986

Issue: When you set the LDAP or RADIUS default role to none, the Read Only (o) role is not automatically assigned as it should be.

Update: This issue is fixed in the ILOM 3.0.4 release. Now when you set the LDAP or RADIUS default role to none and log in as an LDAP or RADIUS user, the Read Only (o) role is assigned.

Difficulty Removing dnslocatorquery Records From Active Directory Configuration

CR 6797346

Issue: dnslocatorquery records cannot be removed during configuration of Active Directory.

Update: This issue is fixed in the ILOM 3.0.4 release. The content and range rules for the dnslocatorquery records have been relaxed to allow for the clearing or removal of the entries. This allows an empty string value to be accepted to completely remove the entry.

When Using the CLI to Set the Time Zone, Certain Time Zones Do Not Recalculate the Clock Correctly (x86 Servers)

CR 6798875

Issue: When using the CLI to set the time zone, some time zones either do not recalculate the clock correctly or update the time zone setting on the clock.

Update: As of ILOM 3.0.4 this issue has been fixed for x86 servers.

You must use valid global time zone nomenclature to set the time zone to recalculate the clock correctly. You can find a list of the valid global time zone nomenclature on the Internet, for example, at:

http://en.wikipedia.org/wiki/List_of_zoneinfo_time_zones

Examples:

- To set the SP clock time zone property value to the US standard eastern zone, you would type:

```
-> set /SP/clock/ timezone=America/New_York
```

or

- To set the SP clock time zone property value to the US central time zone, you would type:

```
-> set /SP/clock/ timezone=America/Chicago
```

Snapshot Utility Missing Log Files for Debugging

CR 6811375

Issue: Missing files from `/var/log` impairs debug process when collecting data for Service personnel using the Snapshot Utility.

Update: The missing Snapshot Utility `/var/log` files have been restored in the ILOM 3.0.4 release.

ILOM CLI for `set /{target}/config dump_uri` Does Not Provide Confirmation Message

CR 6804202

Issue: When you set the `dump_uri` on `/{target}/config`, the ILOM CLI does not display a confirmation message to indicate whether the command was successful.

Update: The print confirmation message for `set /{target}/config dump_uri` has been corrected in the ILOM 3.0.4 release.

Role Help Text for Read-Only `/SYS` Properties Is Incorrect

CR 6764923, CR 6770180

Issue: The ILOM CLI Help provides misleading user role information for read-only `/SYS` properties. For example:


```
-> help /SYS fru_part_number
```

```
Properties:
```

```
fru_part_number : FRU part number
```

```
fru_part_number : User role required for set = r
```

User role information provided by the Help text for read-only properties is misleading since the read-only properties cannot be configured regardless of user role.

Update: As of ILOM 3.0.4, the ILOM Help function was updated to remove the required user role value for read-only /SYS properties.

Help Text for Power Management Properties Is Incorrect

CR 6770180

Issue: The following properties are read-only and are not configurable; therefore, the role required to view these properties is Read Only (o):

```
-> help /SP/powermmgmt
```

```
Properties:
```

```
actual_power : Actual power consumed by the system
```

```
actual_power : User role required for set = o
```

```
permitted_power : Total power permitted for the system
```

```
permitted_power : User role required for set = o
```

```
available_power : Available power for the system
```

```
available_power : User role required for set = o
```

Update: This issue is fixed in the ILOM 3.0.4 release. The Help text associated with the properties now correctly specifies that the required role to view the properties is Read Only (o).

Help Output Results for <TARGET> <property> <property> Is Confusing

CR 6770069

Issue: Help function displays confusing text when listing values for multiple properties, for example:

Help output prints:

```
-> help /HOST send_break_action boottimeout status
Properties:
  send_break_action : Send Break Action to Host
  send_break_action : Possible values = break, dumpcore
  send_break_action : User role required for set = c
  boottimeout       : Boot time out
  send_break_action : Possible values = break, dumpcore
  boottimeout       : User role required for set = r
  status            : Host Status
  send_break_action : Possible values = break, dumpcore
  boottimeout       : User role required for set = r
```

Help output should print:

```
-> help /HOST send_break_action boottimeout status
Properties:
  send_break_action : Send Break Action to Host
  send_break_action : Possible values = break, dumpcore
  send_break_action : User role required for set = c
  boottimeout       : Boot time out
  boottimeout       : User role required for set = r
  status            : Host Status
```

Update: The Help function was updated in the ILOM 3.0.4 release to remove property values that were not applicable.

Inaccurate Help Text Values for /SP/users/root/ssh/key/1-5

CR 6783032

Issue: The Help text has several inaccuracies for the different properties under /SP/users/root/ssh/key/.

Update: The Help function for /SP/users/root/ssh/key has been corrected in the ILOM 3.0.4 release.

ILOM External Serial Port Flow Control Is Implemented Incorrectly

CR 6822067

Issue: Writable support (using the `set` command) for ILOM's external serial port flow control is supported only on Oracle's AST2000 server-based platforms.

Update: As of ILOM 3.0.4, writable support for ILOM's external serial port flow control is supported on all Oracle platforms.

CLI Auto Completion for Read-Only Properties Does Not Work on Sun Fire X4140, X4240, and X4440 Servers

CR 6729108

Issue: CLI does not recognize read-only properties when using the `show` command.

Update: Support was added to the ILOM 3.0.4 release to recognize read-only properties while using the `show` command.

Known Issues as of ILOM 3.0.4

This section describes known issues and workarounds as of ILOM 3.0.4. Specific change request (CR) identification numbers and workarounds for these issues are provided, where available.

Topics

Description	Links
ILOM Remote Console known issues	<ul style="list-style-type: none">• “ILOM Remote Console Might Hang on Windows Client When Redirecting a CD-ROM Image or Floppy Image” on page 24• “Unrecoverable ILOM Remote Console Sessions” on page 25

ILOM Remote Console Might Hang on Windows Client When Redirecting a CD-ROM Image or Floppy Image

CR 6806444

Issue: When using a Windows client to redirect a CD-ROM image or floppy image from the ILOM Remote Console, the ILOM Remote Console might not respond.

Affected Software:

- ILOM 2.0 or later and ILOM 3.0 or later
- ILOM Remote Console
- JDK 1.6
- Windows operating system installed on client system.

Workaround:

- **Close the ILOM Remote Console window on the Windows client, then perform one of the following workarounds:**
 - Using a Linux or Solaris client, launch the ILOM Remote Console to redirect the CD-ROM image or floppy image.or
 - Using a Windows, Solaris, or Linux client, launch the Storage Redirection Utility in ILOM 3.0 to redirect the CD-ROM image or floppy image.

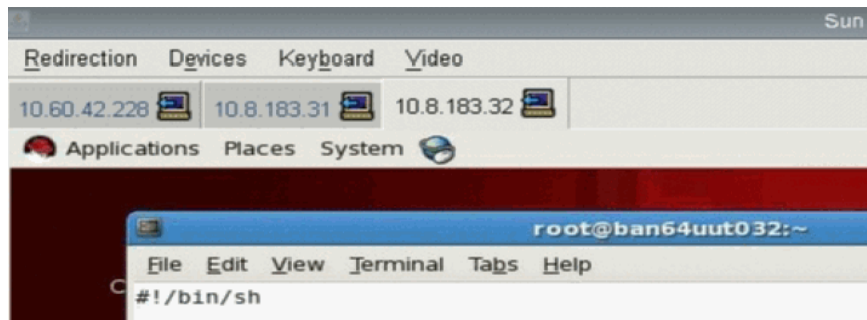
Note – The Storage Redirection Utility feature is a command-line utility that is only available in ILOM 3.0. For instructions about how to use the Storage Redirection Utility, see the Oracle ILOM 3.0 Documentation Collection.

Unrecoverable ILOM Remote Console Sessions

CR 6867870

Issue: Unrecoverable ILOM Remote Console sessions can occur when:

- The ILOM Remote Console client has multiple tabs showing connections to three different hosts while the state of the ILOM Remote Console client is in sleep mode (or network cable is disconnected).



- A second and third ILOM Remote Console client have the same connections established to the same three hosts while the state of these Remote Console clients are also in sleep mode (or network cable is disconnected).

When one (or more) of the ILOM Remote Console clients returns from sleep mode (or the network cable is reconnected) and is unable to restart an inactive session, the following occurs:

- A system dialog appears stating the “Connection with SP is down, try redirection later.” Click OK to dismiss the dialog.
- A second dialog appears stating “The maximum number of connections have been reached.” Click OK to dismiss the dialog.

Workaround: To recover the inactive ILOM Remote Console sessions on the first two hosts, you must reset the SP (`reset /SP`) on both systems. For the third host, the inactive ILOM Remote Console sessions typically recover within five minutes after resetting the SPs on the first two hosts. However, if the state of the third ILOM Remote Console client is in hibernation mode or screen saver mode, the inactive Remote Console sessions on the third host might not recover. Should this occur, you will need to reset the SP on the third host to recover the inactive ILOM Remote Console sessions. ILOM Remote Console supports up to three user session connections to a host system.

Updates to the ILOM 3.0.6 Firmware

This chapter describes the new features and functionality that have been added to the Oracle ILOM 3.0.6 firmware release. Procedures to implement the new functionality are explained. Resolved issues and known issues are also described. In addition, references to the ILOM 3.0 documents in which the new features are described in detail are provided.

Topics in the chapter include:

- [“New Features for ILOM 3.0.6” on page 28](#)
- [“Resolved Issues as of ILOM 3.0.6” on page 28](#)
- [“Known Issues as of ILOM 3.0.6” on page 30](#)

New Features for ILOM 3.0.6

The following table identifies new features available in the ILOM 3.0.6 release. References to the appropriate guides in the ILOM 3.0 Documentation Collection that describe the features are also provided.

Topics

Description	Refer To:
New storage monitoring properties for HDDs and RAID configurations	<ul style="list-style-type: none">• <i>Oracle Integrated Lights Out Manager (ILOM) 3.0 Concepts Guide, Storage Monitoring and Zone Management</i>• <i>Oracle Integrated Lights Out Manager (ILOM) 3.0 CLI Procedures Guide, Monitoring Storage Components and Zone Manager</i>
Enhancements to power management	<ul style="list-style-type: none">• <i>Oracle Integrated Lights Out Manager (ILOM) 3.0 Concepts Guide, Power Monitoring and Management of Hardware Interfaces</i>• <i>Oracle Integrated Lights Out Manager (ILOM) 3.0 CLI Procedures Guide, Power Monitoring and Management of Hardware Interfaces</i>• <i>Oracle Integrated Lights Out Manager (ILOM) 3.0 Web Interface Procedures Guide, Power Monitoring and Management of Hardware Interfaces</i>
New root password warning message	<ul style="list-style-type: none">• <i>Oracle Integrated Lights Out Manager (ILOM) 3.0 Concepts Guide, ILOM Overview</i>
Updated list of network ports used by ILOM	<ul style="list-style-type: none">• <i>Oracle Integrated Lights Out Manager (ILOM) 3.0 Concepts Guide, ILOM Network Configurations</i>

Resolved Issues as of ILOM 3.0.6

This section describes the issues that have been resolved as of the ILOM 3.0.6. Specific change request (CR) identification numbers for these fixed issues are provided, where available.

Topics

Description	Links
Unexpected SMTP test email notification behavior	<ul style="list-style-type: none">• “Inability to Send SMTP Test Alert Email Notification” on page 29
Unexpected behavior drill-down behavior from CMM to blade	<ul style="list-style-type: none">• “Inability to Navigate From CMM to Server Module After Disabling SSH” on page 29
Unexpected power management event behavior	<ul style="list-style-type: none">• “Power Management Events Are Not Recorded in Log File” on page 29

Inability to Send SMTP Test Alert Email Notification

CR 6850298

Issue: After pressing Test (on SMTP page) the test email notification was not sent and there was no entry found in event log for this event.

Update: This issue has been resolved as of ILOM 3.0.6.

Inability to Navigate From CMM to Server Module After Disabling SSH

CR 6837359

Issue: After disabling SSH on a server module it was impossible to navigate to the server module from the CMM.

Update: This issue has been resolved as of ILOM 3.0.6.

Power Management Events Are Not Recorded in Log File

CR 6831492

Issue: Power management was not triggering an event after crossing a threshold.

Update: This issue has been resolved as of ILOM 3.0.6.

Known Issues as of ILOM 3.0.6

This section describes known issues and workarounds as of ILOM 3.0.6. Specific change request (CR) identification numbers and workarounds for these issues are provided, where available.

Topics

Description	Links
ILOM web interface known issues	<ul style="list-style-type: none">• “Unable to Retrieve Host Power State After Upgrading ILOM Firmware From 2.0 to 3.0” on page 30• “Access Page Error Appears After Configuring Unknown Sensor LED Status When Monitoring System From IPMItool” on page 31
IPMI interface known issue	<ul style="list-style-type: none">• “Access Page Error Appears After Configuring Unknown Sensor LED Status When Monitoring System From IPMItool” on page 31
Back up and restore known issue	<ul style="list-style-type: none">• “Console Error Appears After Performing Backup and Restore” on page 31

Unable to Retrieve Host Power State After Upgrading ILOM Firmware From 2.0 to 3.0

CR 6858008

Issue: When the SP firmware is updated from ILOM 2.0 to 3.0, the ILOM web interface might not be able to retrieve the remote host power state after the upgrade completes. If this occurs, a blank page appears on the Remote Power Control tab.

Workaround: Perform one of the following actions:

- Clear your browser cache and refresh your browser after completing the upgrade.

or

- In the header area of the ILOM web page, click the Refresh button (on the ILOM web interface page) to correct the browser caching issue.

Access Page Error Appears After Configuring Unknown Sensor LED Status When Monitoring System From IPMItool

CR 6848980

Issue: Unknown sensor LED statuses are shown in the ILOM web interface when using IPMItool to monitor Oracle servers. This issue is likely to occur when concurrently running the SP and the IPMI KCS interface from the operating system (OS). As a result of this configuration, the IPMI messages are overloaded to the SP.

Workaround: To enable the ILOM web interface sufficient time to read the IPMI sensors, you should limit the rate of KCS message responses to the host OS by inserting the command `sleep 1` between commands in your host IPMItool script.

Console Error Appears After Performing Backup and Restore

CR 6847309

Issue: The following console error message might appear after backing up and restoring the ILOM configuration.

```
bind (udp): Address already in use
```

Workaround: None. This is a benign error message.

Windows Server 2008 R2 Generates System Event Log Warning Messages When Power Is Being Limited by ILOM Power Management

CR 6881284

Issue: When power is being limited by the ILOM Power Management feature, the Windows Server 2008 R2 operating system will generate warning messages in the System Event Log informing the user that the processor(s) are being restricted.

Example Event:

```
The Speed of Processor xx in group x is being limited by system firmware. The processor has been in this reduced performance state for xxxx seconds since last report.
```

Workaround. None needed. These are expected events and are not indicative of a problem.

Updates to ILOM 3.0.8 Firmware

This chapter describes the new features and functionality that have been added to the Oracle ILOM 3.0.8 firmware release. Procedures to implement the new functionality are explained. Resolved issues and known issues are also described. In addition, references to the ILOM 3.0 documents in which the new features are described in detail are provided.

Topics in the chapter include:

- [“New Features for ILOM 3.0.8” on page 34](#)
- [“Resolved Issues as of ILOM 3.0.8” on page 35](#)
- [“Known Issues as of ILOM 3.0.8” on page 36](#)

New Features for ILOM 3.0.8

The following table identifies new features available in the ILOM 3.0.8 release. References to the appropriate guides in the ILOM 3.0 Documentation Collection that describe the features are also provided.

Topics

Description	Refer To:
Enhanced web interface page that enables you to view and manage system summary information and power-on settings from one page	<ul style="list-style-type: none">• <i>Oracle Integrated Lights Out Manager (ILOM) 3.0 Web Interface Procedures Guide</i>, Web Interface Overview
New power management terminology and web layout for SP	<ul style="list-style-type: none">• <i>Oracle Integrated Lights Out Manager (ILOM) 3.0 Concepts Guide</i>, Power Monitoring and Management of Hardware Interfaces• <i>Oracle Integrated Lights Out Manager (ILOM) 3.0 Web Interface Procedures Guide</i>, Power Monitoring and Management of Hardware Interfaces
New IPMI power capping (Power Limit) capability and new IPMI procedures for: <ul style="list-style-type: none">• Set Power-Limit Budget Activation State• Get Power-Limit Budget Wattage• Set Power Limit Budget Wattage	<ul style="list-style-type: none">• <i>Oracle Integrated Lights Out Manager (ILOM) 3.0 Management Protocols Reference Guide</i>, IPMI Overview
New power capping (Power Limit) capability for SNMP implementations For more information, see the Hardware Control MIB for power management data objects	<ul style="list-style-type: none">• <i>Oracle Integrated Lights Out Manager (ILOM) 3.0 Management Protocols Reference Guide</i>, IPMI Overview
New functionality added in ILOM for system banner messages	<ul style="list-style-type: none">• <i>Oracle Integrated Lights Out Manager (ILOM) 3.0 Concepts Guide</i>, ILOM Overview• <i>Oracle Integrated Lights Out Manager (ILOM) 3.0 CLI Procedures Guide</i>, Logging In to and Out of ILOM• <i>Oracle Integrated Lights Out Manager (ILOM) 3.0 Web Interface Procedures Guide</i>, Logging In to and Out of ILOM
New ILOM web interface support for Storage Monitoring	<ul style="list-style-type: none">• <i>Oracle Integrated Lights Out Manager (ILOM) 3.0 Web Interface Procedures Guide</i>, Monitoring Storage Components and Zone Manager

Topics

Description	Refer To:
New functionality added in ILOM to support WS-Management and CIM as a standard management interface	<ul style="list-style-type: none">• <i>Oracle Integrated Lights Out Manager (ILOM) 3.0 Concepts Guide</i>, ILOM Overview• <i>Oracle Integrated Lights Out Manager (ILOM) 3.0 Management Protocols Reference Guide</i>, Server Management Using WS-Management and CIM
New SP History Log functionality added in ILOM for Oracle x86 servers Note - This content is applicable to Oracle SPARC servers as well.	<ul style="list-style-type: none">• <i>Oracle Integrated Lights Out Manager (ILOM) 3.0 CLI Procedures Guide</i>, Monitoring System Components
New TPM management for SPARC servers	<ul style="list-style-type: none">• <i>Oracle Integrated Lights Out Manager (ILOM) 3.0 CLI Procedures Guide</i>, Managing TPM and LDom States on SPARC Servers• <i>Oracle Integrated Lights Out Manager (ILOM) 3.0 Web Interface Procedures Guide</i>, Managing TPM and LDom States on SPARC Servers

Resolved Issues as of ILOM 3.0.8

This section describes the issues that have been resolved in the ILOM 3.0.8 release. Specific change request (CR) identification numbers and workarounds for the issues are provided, where available.

Topics

Description	Links
Time zone CLI setting issue resolved	<ul style="list-style-type: none">• “Invalid Time Zone Settings in ILOM CLI” on page 35
Snapshot properties are not persistent after resetting the SP	<ul style="list-style-type: none">• “Snapshot Properties Are Not Persistent After a Reset” on page 36

Invalid Time Zone Settings in ILOM CLI

CR 6871128

Issue: Incomplete time zone names were accepted by ILOM for the CLI target: `SP/clock/timezone`. An incomplete time zone name could cause the system to use the time zone for Greenwich Mean Time (GMT).

Update: This issue is fixed in the ILOM 3.0.8 release. The ILOM CLI only accepts and validates complete time zone names.

Snapshot Properties Are Not Persistent After a Reset

Issue: If you use the CLI to change the Snapshot property values and then reset the SP, the Snapshot property values revert to their default property values.

Update: The Snapshot feature in ILOM is working as designed. The Snapshot properties are not persistent after resetting the SP.

Known Issues as of ILOM 3.0.8

This section describes known issues and workarounds as of ILOM 3.0.8. Specific change request (CR) identification numbers and workarounds for these issues are provided, where available.

Topics

Description	Links
The 64-bit JRE is not supported for Storage Redirection	<ul style="list-style-type: none">• “Storage Redirection Not Supported With 64-bit JRE” on page 37
Long delay populating storage monitoring devices after performing upgrade	<ul style="list-style-type: none">• “5-Minute Delay to View Storage Monitoring Information” on page 37
ILOM version not shown when upgrading ILOM using Oracle Hardware Installation Assistant and an inband management interface	<ul style="list-style-type: none">• “ILOM Version Not Shown When Using HIA to Upgrade ILOM From an Inband Management Interface” on page 38

Storage Redirection Not Supported With 64-bit JRE

CR 6800702 and CR 6805732

Issue: An attempt to start Storage Redirection might fail when using a 64-bit Java runtime environment (JRE). Since the 64-bit JRE is the default on a 64-bit system, you will need to have the 32-bit JRE installed as well. When using a 64-bit JRE to start Storage Redirection, the following error message appears:

```
"Unsupported platform"
```

Workaround: Install a 32-bit JRE on the 64-bit system. JREs can be downloaded from this site: <http://java.com/en/download/index.jsp>

5-Minute Delay to View Storage Monitoring Information

CR 6870530

Issue: You might experience up to a 5-minute delay before storage monitoring information is present or up to date in the ILOM CLI or the web interface. This delay typically occurs after:

- Upgrading to ILOM 3.0.6 (or later) and installing the required System Management Pack.

or

- Querying the system after updates were made to the RAID or disk information.

Note – The Storage Monitoring feature is not available on all Oracle servers. To determine whether your server is enabled to support this feature, refer to the ILOM Supplement guide or Administration guide for your server.

Note – If the Storage Monitoring feature is available on your server, a System Management Pack is required to be installed prior to using the Storage Monitoring feature. For more information about the System Management pack required for your server, refer to the ILOM Supplement guide or Administration guide for your server.

Workaround: There is no workaround. This 5-minute delay only occurs after installation of the required System Management Pack or after RAID or disk updates have been made to the system.

ILOM Version Not Shown When Using HIA to Upgrade ILOM From an Inband Management Interface

CR 6867109

Issue: When upgrading ILOM from the Oracle Hardware Installation Assistant (HIA) using the inband interface, HIA might not (on some Oracle servers) display the running version of ILOM.

Workaround: Use the ILOM web interface to determine the running version of ILOM.

Updates to ILOM 3.0.9 Firmware

This chapter describes the new features and functionality that have been added to the Oracle ILOM 3.0.9 firmware release. Procedures to implement the new functionality are explained. Resolved issues and known issues are also described. In addition, references to the ILOM 3.0 documents in which the new features are described in detail are provided.

Topics in the chapter include:

- [“New Features for ILOM 3.0.9” on page 40](#)
- [“Resolved Issues as of ILOM 3.0.9” on page 41](#)
- [“Known Issues as of ILOM 3.0.9” on page 43](#)

New Features for ILOM 3.0.9

The following table identifies new features available in the ILOM 3.0.9 release. References to the appropriate guides in the ILOM 3.0 Documentation Collection that describe the features are also provided.

Topics	
Description	Refer To:
New component firmware update capability for modular chassis systems	<ul style="list-style-type: none">• <i>Oracle Integrated Lights Out Manager (ILOM) CMM Administration Guide for Sun Blade 6000 and Sun Blade 6048 Modular Systems, Firmware Update Procedures</i>
New component firmware management capability for Sun Fire X4800 Systems	<ul style="list-style-type: none">• <i>Oracle Integrated Lights Out Manager (ILOM) 3.0 CLI Procedures Guide, Updating ILOM Firmware</i>• <i>Oracle Integrated Lights Out Manager (ILOM) 3.0 Web Interface Procedures Guide, Updating ILOM Firmware</i>
New international keyboard support for ILOM Remote Console	<ul style="list-style-type: none">• <i>Oracle Integrated Lights Out Manager (ILOM) 3.0 Concepts Guide, Remote Host Management Options</i>
New system uptime display available in ILOM CLI and web interface	<ul style="list-style-type: none">• <i>Oracle Integrated Lights Out Manager (ILOM) 3.0 CLI Procedures Guide, CLI Command Reference</i>• <i>Oracle Integrated Lights Out Manager (ILOM) 3.0 Web Interface Procedures Guide, Web Interface Overview</i>
Support for Microsoft Windows 7 and Internet Explorer 8 Clients	<ul style="list-style-type: none">• <i>Oracle Integrated Lights Out Manager (ILOM) 3.0 Web Interface Procedures Guide, Managing Remote Hosts Redirection and Securing the ILOM Remote Console</i>

Resolved Issues as of ILOM 3.0.9

This section describes the issues that have been resolved in the ILOM 3.0.9 release. Specific change request (CR) identification number and workaround for the issues are provided, where available.

Topics

Description	Links
Remote Console resolved issue	<ul style="list-style-type: none">• “Unrecoverable ILOM Remote Console Sessions” on page 41

Unrecoverable ILOM Remote Console Sessions

CR 6867870

Issue: Prior to ILOM 3.0.6, some users experienced problems when recovering an inactive ILOM Remote Console session to a host and were required, as a workaround, to reboot the host server SP to recover the session. For further details about this problem and the workaround, see [“Unrecoverable ILOM Remote Console Sessions” on page 25](#) in the Known Issues section of [Chapter 3](#).

Update: A fix that no longer requires the rebooting of the SP to recover an inactive Remote Console session is available for all Oracle server systems shipping with (or supporting) one of the following ILOM firmware releases:

- ILOM 3.0.6
- ILOM 3.0.8
- ILOM 3.0.9

If your server has ILOM 3.0.6 or later installed, the ILOM Remote Console could take up to five minutes to release and recover an inactive session. However, if the host server is powered off, the recovery time for the ILOM Remote Console session can take approximately 15 minutes. Note that the recovery time for the ILOM Remote Console session is dependent on the amount of video traffic that is present. The following table provides a guideline for how long the ILOM Remote Console might take to release and recover a session.

Video Screen Traffic	Estimated Recovery Time for Remote Console Session	Console or Host Scenario
Extremely High (>30 KB per second of video traffic between host system and SP)	Approximately 10 seconds	Remote Console has an xterm window running "ls -R /"
High (1 KB per second between host system and SP)	Approximately 3 minutes	Remote Console display is dynamic. For example: blinking mouse cursor
Regular (500 bytes per second between host system and SP)	Approximately 5 minutes	Remote Console display is static. For example, it has no keyboard, mouse activity or any real-time graphical display.
Low (100 bytes per second between host system and SP)	Approximately 11 minutes	Remote Console has a black or blank display.
Very Low (7 bytes per second between host system and SP)	Approximately 15 minutes	Host is powered off.
None (0 bytes between host system and SP)	Approximately 6 minutes	Remote Console session is in suspend mode (inactive tab).

Known Issues as of ILOM 3.0.9

This section describes known issues and workarounds as of ILOM 3.0.9. Specific change request (CR) identification numbers and workarounds for these issues are provided, where available.

Topics

Description	Links
ILOM displays null FRU data fields	<ul style="list-style-type: none">• “DIMM FRU Data Fields Are Null After Downgrading or Upgrading SP Firmware Between 3.0.3 and 3.0.9” on page 43
Usable output appears for invalid Help command syntax	<ul style="list-style-type: none">• “Invalid Help Command (help /SP system_contact=test) Results in Unusable Output” on page 44
Unable to collect SP data with Snapshot Utility when web browser security setting is enabled	<ul style="list-style-type: none">• “Service Snapshot Utility Unable to Collect SP Data When IE Web Browser Security Option Is Enabled” on page 44

DIMM FRU Data Fields Are Null After Downgrading or Upgrading SP Firmware Between 3.0.3 and 3.0.9

CR 6913593, 6850456, and 6916007

Issue: On some platform servers, ILOM displays null DIMM FRU data fields after upgrading or downgrading the ILOM SP firmware (between 3.0.3 and 3.0.9) with the `Delay BIOS Update` option enabled.

Workaround: Perform the following steps:

1. **Power off the host before downgrading or upgrading the firmware between ILOM 3.0.3 and 3.0.9.**
2. **Do not enable the firmware option to `Delay BIOS Update` when downgrading or updating the ILOM firmware.**

Invalid Help Command (help /SP system_contact=test) Results in Unusable Output

CR 6884556 and **6923383**

Issue: Using an invalid help command such as `help /SP system_contact=test` results in unusable output displayed.

Workaround: Use the correct syntax for `help /SP system_contact`.

Service Snapshot Utility Unable to Collect SP Data When IE Web Browser Security Option Is Enabled

CR 6877868

Issue: If the Internet Explorer (IE) web browser Security option for Save Encrypted Pages To Disk is enabled, the following error message appears when attempting to collect SP data using the Service Snapshot Utility:

```
Internet Explorer cannot download mdccvm02i -  
spanshot.cgi?dataset=ioh. Internet Explorer was not able to  
open this Internet site. The requested site is either  
unavailable or cannot be found. Please try again later.
```

Workaround: Prior to using the Service Snapshot Utility to collect SP data, disable the Internet Explorer web browser Security option for Save Encrypted Pages To Disk (Tools -->Internet Options-->Advanced tab).

Updates to ILOM 3.0.10 Firmware

This chapter describes the new features and functionality that have been added to the Oracle ILOM 3.0.10 firmware release. Procedures to implement the new functionality are explained. Resolved issues and known issues are also described. In addition, references to the ILOM 3.0 documents in which the new features are described in detail are provided.

Topics in the chapter include:

- [“New Features for ILOM 3.0.10” on page 46](#)
- [“Resolved Issues as of ILOM 3.0.10” on page 47](#)
- [“Known Issues as of ILOM 3.0.10” on page 48](#)

New Features for ILOM 3.0.10

The following table identifies new features available in the ILOM 3.0.10 release. References to the appropriate guides in the ILOM 3.0 Documentation Collection that describe the features are also provided.

Topics

Description	Refer To:
Updates made to Power Management CMM terminology, web layout, and CLI properties	<ul style="list-style-type: none">• <i>Oracle Integrated Lights Out Manager (ILOM) 3.0 Concepts Guide, Power Monitoring and Management of Hardware Interfaces</i>• <i>Oracle Integrated Lights Out Manager (ILOM) 3.0 CLI Procedures Guide, Power Monitoring and Management of Hardware Interfaces</i>• <i>Oracle Integrated Lights Out Manager (ILOM) 3.0 Web Interface Procedures Guide, Power Monitoring and Management of Hardware Interfaces</i>
New centralized interface for managing chassis component firmware	<ul style="list-style-type: none">• <i>Oracle Integrated Lights Out Manager (ILOM) 3.0 Concepts Guide, ILOM Configuration Management and Firmware Update Operations</i>• <i>Oracle Integrated Lights Out Manager (ILOM) 3.0 CLI Procedures Guide, Updating ILOM Firmware</i>• <i>Oracle Integrated Lights Out Manager (ILOM) 3.0 Web Interface Procedures Guide, Updating ILOM Firmware</i>
New SAS-2 zoning management feature available for ILOM CMM 3.0.10	<ul style="list-style-type: none">• <i>Oracle Integrated Lights Out Manager (ILOM) 3.0 Concepts Guide, Storage Monitoring and Zone Management</i>• <i>Oracle Integrated Lights Out Manager (ILOM) 3.0 CLI Procedures Guide, Monitoring Storage Components and Zone Manager</i>• <i>Oracle Integrated Lights Out Manager (ILOM) 3.0 Web Interface Procedures Guide, Monitoring Storage Components and Zone Manager</i>
Ability to make CMM CLI prompt specific to CMM or blade	<ul style="list-style-type: none">• <i>Oracle Integrated Lights Out Manager (ILOM) 3.0 CLI Procedures Guide, CLI Overview</i>

Resolved Issues as of ILOM 3.0.10

This section describes the issues that have been resolved in the ILOM 3.0.10 release. Specific change request (CR) identification numbers and workarounds for the issues are provided, where available.

Topics

Description	Links
Display output for invalid CLI help command syntax fixed	<ul style="list-style-type: none">• “Invalid Help Command (help /SP system_contact=test) Results in Unusable Output” on page 47
Force option made available for IPMItool sunoem CLI	<ul style="list-style-type: none">• “IPMItool sunoem CLI Might Be Denied If All Session Slots Are Busy” on page 48

Invalid Help Command (help /SP system_contact=test) Results in Unusable Output

CR 6884556

Issue: Using an invalid CLI help command such as `help /SP system_contact=test` results in unusable output displayed.

Update: The CLI help feature in ILOM 3.0.10 has been updated. When invalid syntax for the help command is entered in the CLI, the following message and usage information appears.

```
help: Invalid command syntax
Usage: help [-o|-output terse|verbose]
[<command>|legal|targets|<target>|<target> <property>]
```

IPMItool sunoem CLI Might Be Denied If All Session Slots Are Busy

CR 6884556

Issue: IPMItool sunoem CLI could be denied because all session slots appear to be busy.

Update: The IPMItool sunoem CLI has been updated as of ILOM 3.0.10 to offer a `force` command that closes any currently running IPMI sunoem CLI session in favor of the new one that is being invoked. You can invoke the `force` command by including the word `force` as part of the argument to invoke the CLI. For example:

```
ipmitool -I open sunoem cli force version
```

Known Issues as of ILOM 3.0.10

This section describes the known issues and workarounds as of ILOM 3.0.10. Specific change request (CR) identification numbers and workarounds for these issues are provided, where available.

Topics

Description	Links
Unable to view DVD content from Solaris client redirection	<ul style="list-style-type: none">• “DVD Redirection From Solaris Client to RHEL Host Requires Manual Mount” on page 49
ILOM CLI Storage Redirection fails to launch with 64-bit JDK	<ul style="list-style-type: none">• “Storage Redirection CLI Service Requires 32-bit JDK to Successfully Start” on page 50
ILOM Remote Console fails to launch with 64-bit JDK	<ul style="list-style-type: none">• “ILOM Remote Console Requires 32-bit JDK to Successfully Launch” on page 52
Internet Explorer 6 unable to launch ILOM 3.0 web interface	<ul style="list-style-type: none">• “ILOM Web Interface Unable to Connect to SP When Using Internet Explorer 6” on page 54

DVD Redirection From Solaris Client to RHEL Host Requires Manual Mount

CR 6876387

Issue: When you redirect a DVD (physical driver or image file) from Oracle Solaris to Red Hat Enterprise Linux (RHEL), the floppy and CD-ROM icon will appear in RHEL, but when you click the CD-ROM icon you are unable to see the content of the DVD.

Update: You need to manually mount the DVD device to see the content of the DVD. To manually mount the DVD device, follow these steps:

1. Use the `lsscsi` command to check the device name of DVD.

For example, the `lsscsi` output might look like:

```
[5:0:0:0] cd/dvd AMI      Virtual CDROM    1.00  /dev/scd1
```

Where the device name is: `/dev/scd1`

2. Create a new directory as the mount point or use the existing directory.

For example:

```
/mnt
```

3. Mount the DVD device.

For example:

```
# mount /dev/scd1 /mnt
```

```
mount: block device /dev/scd1 is write-protected, mounting  
read-only
```

The contents the DVD appears under `/mnt`.

Storage Redirection CLI Service Requires 32-bit JDK to Successfully Start

CR 6938720

Issue: The service for the Storage Redirection CLI feature in ILOM fails to start if the 64-bit JDK file type is specified to start the service.

Workaround: Specify the 32-bit JDK file type to start the Storage Redirection Service. Instructions for specifying the 32-bit JDK file type when using either the FireFox web browser or Internet Explorer web browser follow:

- **FireFox web browser.** Perform these steps to specify the 32-bit JDK when starting the service for the Storage Redirection CLI feature in ILOM.

a. In the ILOM web browser, start the service for Storage Redirection.

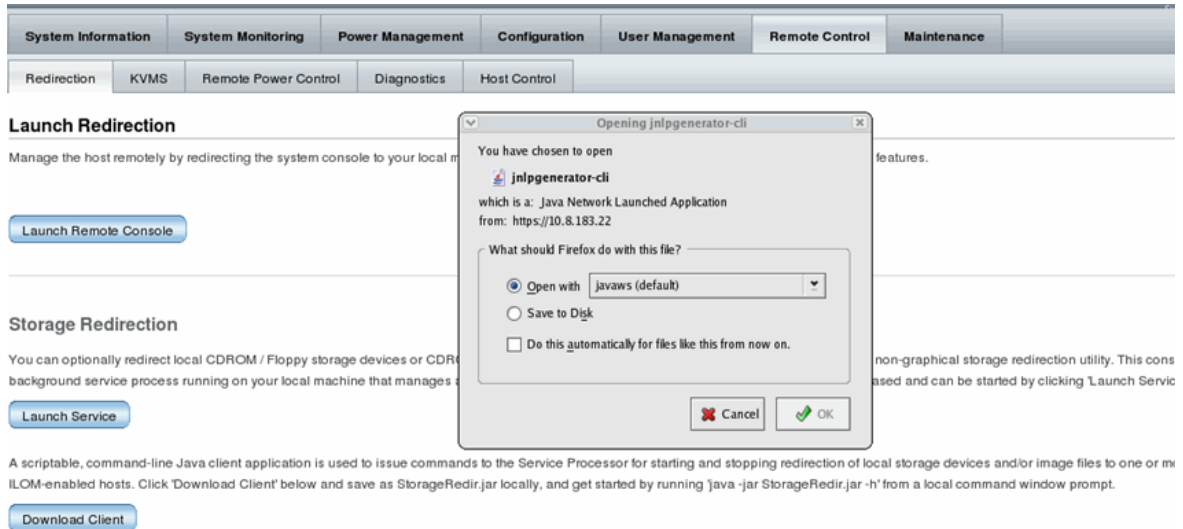
For example, click `Remote Console --> Redirection` then in the `Launch Redirection` page, click `Launch Service`.

Note – For details about how to start the Storage Redirection Service, see the procedure “Start Storage Redirection Service” in the *Oracle Integrated Lights Out Manager (ILOM) 3.0 CLI Procedures Guide* (820-6412).

A dialog appears indicating the file type chosen to start the service.

b. In the dialog (see example dialog below), do the following:

- i. **Click `Open with...` to specify the 32-bit JDK file.**
- ii. **Select the check box for `Do this automatically for files like this from now on`.**



- **Internet Explorer (IE) web browser.** Perform the following steps **prior to starting the service for the Storage Redirection CLI** feature in ILOM. These steps describe how to register the 32-bit JDK file type for the Storage Redirection Service in ILOM using Windows Explorer.
 - a. **On the Windows client, open Windows Explorer (not Internet Explorer).**
 - b. **In the Windows Explorer dialog, select Tools --> Folder Options then select the Files Types tab.**
 - c. **In the Files Types tab, do the following:**
 - i. **In the registered file type list, select the JNLP file type and click Change.**
 - ii. **In the Open With... dialog, click Browse to select the 32-bit JDK file.**
 - iii. **Select the check box for Always use the selected program to open this kind of file.**
 - iv. **Click OK, then start the service for Storage Redirection in the ILOM web interface.**

For details, see the procedure “Start Storage Redirection Service” in the *Oracle Integrated Lights Out Manager (ILOM) 3.0 CLI Procedures Guide* (820-6412).

ILOM Remote Console Requires 32-bit JDK to Successfully Launch

CR 6938720

Issue: The ILOM Remote Console feature fails to launch if the 64-bit JDK file type is specified by the web browser.

Workaround: Specify the 32-bit JDK file type to launch the ILOM Remote Console. Instructions for specifying the 32-bit JDK file type when using either the FireFox web browser or Internet Explorer web browser follow:

- **FireFox web browser.** Perform these steps to specify the 32-bit JDK when launching the ILOM Remote Console feature in ILOM.

a. In the ILOM web browser, launch the ILOM Remote Console.

For example, click Remote Console --> Redirection then in the Launch Redirection page, click Launch Remote Console.

Note – For details about how to launch the ILOM Remote Console, see the procedure “Launch the ILOM Remote Console” in the *Oracle Integrated Lights Out Manager (ILOM) 3.0 Web Interface Procedures Guide (820-6410)*.

A dialog appears indicating the file type chosen to launch the program.

b. In the dialog (see example dialog below), do the following:

i. Click Open with... to specify the 32-bit JDK file.

ii. Select the check box for Do this automatically for files like this from now on.

The screenshot shows the ILOM web interface with the following navigation tabs: System Information, System Monitoring, Power Management, Configuration, User Management, Remote Control, and Maintenance. Below these are sub-tabs: Redirection, KVMS, Remote Power Control, Diagnostics, and Host Control. The main content area is divided into sections:

- Launch Redirection:** Includes a description and a 'Launch Remote Console' button.
- Storage Redirection:** Includes a description, a 'Launch Service' button, and a 'Download Client' button.

 A dialog box titled 'Opening jnlpgenerator-16' is overlaid on the interface. It contains the text: 'You have chosen to open jnlpgenerator-16 which is a: Java Network Launched Application from: https://10.8.183.22'. Below this, it asks 'What should Firefox do with this file?' with three options:

- Open with javaws (default)
- Save to Disk
- Do this automatically for files like this from now on.

 The dialog has 'Cancel' and 'OK' buttons at the bottom right.

- **Internet Explorer (IE) web browser.** Perform the following steps **prior to launching the ILOM Remote Console** feature in ILOM. These steps describe how to register the 32-bit JDK file type for the ILOM Remote Console feature in ILOM using Windows Explorer.
 - a. **On the Windows client, open Windows Explorer (not Internet Explorer).**
 - b. **In the Windows Explorer dialog, select Tools --> Folder Options then select the Files Types tab.**
 - c. **In the Files Types tab, do the following:**
 - i. **In the registered file type list, select the JNLP file type and click Change.**
 - ii. **In the Open With... dialog, click Browse to select the 32-bit JDK file.**
 - iii. **Select the check box for Always use the selected program to open this kind of file.**
 - iv. **Click OK, then start the service for Storage Redirection in the ILOM web interface.**

For details, see the procedure “Launch the ILOM Remote Console” in the *Oracle Integrated Lights Out Manager (ILOM) 3.0 Web Interface Procedures Guide* (820-6410).

ILOM Web Interface Unable to Connect to SP When Using Internet Explorer 6

CR 6934155

Issue. Due to increased SSL security in ILOM, Internet Explorer (IE) 6 is unable to launch the ILOM SP web interface over HTTPS.

Workarounds: Perform any of the following workarounds:

- Upgrade Internet Explorer to a later version and launch the ILOM SP web interface.
- Use a different web browser such as FireFox 2.0 to launch the ILOM SP web interface.
- Enable the `weak_ciphers` setting in the ILOM SP CLI, then launch the ILOM SP web interface using IE 6.

To enable the setting for `weak_ciphers` in the ILOM CLI, type:

```
-> set /SP/services/https weak_ciphers=enabled
```

- Launch the ILOM SP web interface over HTTP from IE 6.

To launch the ILOM SP web interface over HTTP from IE 6, you must first in the ILOM SP CLI enable HTTP and disable redirection.

To enable HTTP and disable redirection in the ILOM SP CLI, type:

```
-> set /SP/services/http secureredirect=disabled servicestate=enabled
```

Updates to ILOM 3.0.12 and ILOM 3.0.14 Firmware

This chapter describes the new features and functionality that have been added to the Oracle ILOM 3.0.12 and ILOM 3.0.14 firmware releases. Procedures to implement the new functionality are explained. Resolved issues and known issues are also described. In addition, references to the ILOM 3.0 documents in which the new features are described in detail are provided.

Topics in the chapter include:

- [“New Features for ILOM 3.0.12 and ILOM 3.0.14” on page 56](#)
- [“Resolved Issues as of ILOM 3.0.14” on page 57](#)
- [“Known Issues as of ILOM 3.0.14” on page 64](#)

New Features for ILOM 3.0.12 and ILOM 3.0.14

The following table identifies new features available in the ILOM 3.0.12 and ILOM 3.0.14 releases. References to the appropriate guides in the ILOM 3.0 Documentation Collection that describe the features are also provided.

Topics

Description	Refer To:
As of ILOM 3.0.12, new dual-stack IPv4 and IPv6 settings are provided that enable ILOM to fully operate in IPv4 and IPv6 network environments	<ul style="list-style-type: none">• <i>Oracle Integrated Lights Out Manager (ILOM) 3.0 Concepts Guide</i>, ILOM Network Configurations• <i>Oracle Integrated Lights Out Manager (ILOM) 3.0 CLI Procedures Guide</i>, Configuring ILOM Communication Settings• <i>Oracle Integrated Lights Out Manager (ILOM) 3.0 Web Interface Procedures Guide</i>, Configuring ILOM Communication Settings
As of ILOM 3.0.14, new ILOM CLI and web interfaces are provided for viewing and managing LDom configurations for SPARC servers	<ul style="list-style-type: none">• <i>Oracle Integrated Lights Out Manager (ILOM) 3.0 Concepts Guide</i>, Remote Host Management Options• <i>Oracle Integrated Lights Out Manager (ILOM) 3.0 CLI Procedures Guide</i>, Managing TPM and LDom States on SPARC Servers• <i>Oracle Integrated Lights Out Manager (ILOM) 3.0 Web Interface Procedures Guide</i>, Managing TPM and LDom States on SPARC Servers
As of ILOM 3.0.12, a new communication channel known as the Local Interconnect Interface is provided that enables you to locally communicate with ILOM from the host OS without the use of a network management (NET MGT) connection to the server	<ul style="list-style-type: none">• <i>Oracle Integrated Lights Out Manager (ILOM) 3.0 Concepts Guide</i>, ILOM Network Configurations• <i>Oracle Integrated Lights Out Manager (ILOM) 3.0 CLI Procedures Guide</i>, Configuring ILOM Communication Settings• <i>Oracle Integrated Lights Out Manager (ILOM) 3.0 Web Interface Procedures Guide</i>, Configuring ILOM Communication Settings
As of ILOM 3.0.14, Oracle Sun supported CIM classes have been renamed from Sun_xxx to Oracle_xxx	<ul style="list-style-type: none">• <i>Oracle Integrated Lights Out Manager (ILOM) 3.0 Management Protocols Reference Guide</i>, Oracle's Sun-Supported CIM Classes

Resolved Issues as of ILOM 3.0.14

This section describes the issues that have been resolved as of the ILOM 3.0.14 release. Specific change request (CR) identification numbers and workarounds for the issues are provided, where available.

Topics

Description	Links
BIOS upgrade is delayed	<ul style="list-style-type: none">• “BIOS Upgrade Is Delayed After SP Reboot” on page 58
External serial port settings do not reset	<ul style="list-style-type: none">• “External Serial Port Settings Do Not Reset to Default Value” on page 58
Hourly power average does not account for increments of less than one hour	<ul style="list-style-type: none">• “Hourly Power Average Timestamp Does Not Account for Increments of Less Than One Hour” on page 59
ILOM Remote Console might hang on a Windows client	<ul style="list-style-type: none">• “ILOM Remote Console Might Hang on Windows Client When Redirecting a CD-ROM Image or Floppy Image” on page 59
Unable to retrieve host power state after upgrading ILOM firmware	<ul style="list-style-type: none">• “Unable to Retrieve Host Power State After Upgrading ILOM Firmware From 2.0 to 3.0” on page 59
Access page error appears after configuring unknown sensor LED status	<ul style="list-style-type: none">• “Access Page Error Appears After Configuring Unknown Sensor LED Status When Monitoring System From IPMITool” on page 60
Console error appears after backup and restore	<ul style="list-style-type: none">• “Console Error Appears After Performing Backup and Restore” on page 60
Windows Server 2008 R2 generates system event log warning messages	<ul style="list-style-type: none">• “Windows Server 2008 R2 Generates System Event Log Warning Messages When Power Is Being Limited by ILOM Power Management” on page 60
A 5-minute delay might occur when viewing storage monitoring information	<ul style="list-style-type: none">• “5-Minute Delay to View Storage Monitoring Information” on page 61
ILOM version not shown when using HIA to upgrade ILOM	<ul style="list-style-type: none">• “ILOM Version Not Shown When Using HIA to Upgrade ILOM From an Inband Management Interface” on page 61
DIMM FRU data fields are Null after downgrading or upgrading SP firmware	<ul style="list-style-type: none">• “DIMM FRU Data Fields Are Null After Downgrading or Upgrading SP Firmware Between 3.0.3 and 3.0.9” on page 61

Topics

Description	Links
Service Snapshot Utility is unable to collect SP data using the IE web browser	<ul style="list-style-type: none">• “Service Snapshot Utility Unable to Collect SP Data When IE Web Browser Security Option Is Enabled” on page 62
ILOM CLI Storage Redirection fails to launch with 64-bit JDK	<ul style="list-style-type: none">• “Updated Documentation Describing Storage Redirection 32-bit JDK Requirement” on page 62
ILOM Remote Console fails to launch with 64-bit JDK	<ul style="list-style-type: none">• “Updated Documentation Describing ILOM Remote Console 32-bit JDK Requirement” on page 62
DVD redirection requires a manual mount	<ul style="list-style-type: none">• “DVD Redirection From Solaris Client to RHEL Host Requires Manual Mount” on page 63
ILOM web interface is unable to connect to the SP when using IE 6	<ul style="list-style-type: none">• “ILOM Web Interface Unable to Connect to SP When Using Internet Explorer 6” on page 63

BIOS Upgrade Is Delayed After SP Reboot

CR 6813514

Issue: When you upgrade the SP firmware, you can choose to upgrade the BIOS firmware immediately or to delay the BIOS upgrade until a later time. If you choose to immediately upgrade the BIOS, the SP firmware is upgraded, the host is forced to power off, and the SP reboots. If you choose to delay the BIOS upgrade, the SP firmware is upgraded and the SP reboots.

Update: This issue is expected system behavior and will not be fixed. For workaround instructions, see [“BIOS Upgrade Is Delayed After SP Reboot”](#) on page 11.

External Serial Port Settings Do Not Reset to Default Value

CR 6676339

Issue: The `reset_to_defaults` command enables a user to reset the ILOM configuration back to the default values. However, external serial port settings are not reset when `reset_to_defaults` action is performed.

Update: The serial port settings are now set back to the factory default 9600 baud rate when the `reset_to_defaults` action is performed.

Hourly Power Average Timestamp Does Not Account for Increments of Less Than One Hour

CR 6803961

Issue: When logging in to a CMM using the CLI, the hourly power history includes an entry with a timestamp one hour into the future. This entry shows the average power from the prior timestamp to the current moment.

Update: This issue is expected system behavior and will not be fixed. No workaround exists for this issue.

ILOM Remote Console Might Hang on Windows Client When Redirecting a CD-ROM Image or Floppy Image

CR 6806444

Issue: When using a Windows client to redirect a CD-ROM image or floppy image from the ILOM Remote Console, the ILOM Remote Console might not respond.

Update: This issue has been fixed.

Unable to Retrieve Host Power State After Upgrading ILOM Firmware From 2.0 to 3.0

CR 6858008

Issue: When the SP firmware is updated from ILOM 2.0 to 3.0, the ILOM web interface might not be able to retrieve the remote host power state after the upgrade completes. If this occurs, a blank page appears on the Remote Power Control tab.

Update: This issue is expected system behavior and will not be fixed. For workaround instructions, see [“Unable to Retrieve Host Power State After Upgrading ILOM Firmware From 2.0 to 3.0” on page 30](#).

Access Page Error Appears After Configuring Unknown Sensor LED Status When Monitoring System From IPMItool

CR 6848980

Issue: Unknown sensor LED statuses are shown in the ILOM web interface when using IPMItool to monitor Oracle servers. This issue is likely to occur when concurrently running the SP and the IPMI KCS interface from the operating system (OS). As a result of this configuration, the IPMI messages are overloaded to the SP.

Update: This was reported and fixed in ILOM 3.0.6.

Console Error Appears After Performing Backup and Restore

CR 6847309

Issue: The following console error message might appear after backing up and restoring the ILOM configuration.

```
bind (udp): Address already in use
```

Update: This was reported as a known issue in ILOM 3.0.6. This is a benign error message and is no longer reproducible as of ILOM 3.0.10.

Windows Server 2008 R2 Generates System Event Log Warning Messages When Power Is Being Limited by ILOM Power Management

CR 6881284

Issue: When power is being limited by the ILOM Power Management feature, the Windows Server 2008 R2 operating system will generate warning messages in the System Event Log informing the user that the processor(s) are being restricted.

Update: This issue is expected system behavior and will not be fixed. No workaround exists for this issue.

5-Minute Delay to View Storage Monitoring Information

CR 6870530

Issue: You might experience up to a 5-minute delay before storage monitoring information is present or up to date in the ILOM CLI or the web interface. This delay typically occurs after:

- Upgrading to ILOM 3.0.6 (or later) and installing the required System Management Pack.

or

- Querying the system after updates were made to the RAID or disk information.

Update: This issue is expected system behavior and will not be fixed. This 5-minute delay only occurs after installation of the required System Management Pack or after RAID or disk updates have been made to the system.

ILOM Version Not Shown When Using HIA to Upgrade ILOM From an Inband Management Interface

CR 6867109

Issue: When upgrading ILOM from the Oracle Hardware Installation Assistant (HIA) using the inband interface, HIA might not (on some Oracle servers) display the running version of ILOM.

Update: This issue is expected system behavior and will not be fixed. Use the ILOM web interface to determine the running version of ILOM.

DIMM FRU Data Fields Are Null After Downgrading or Upgrading SP Firmware Between 3.0.3 and 3.0.9

CR 6913593, 6850456, and 6916007

Issue: On some platform servers, ILOM displays null DIMM FRU data fields after upgrading or downgrading the ILOM SP firmware (between 3.0.3 and 3.0.9) with the Delay BIOS Update option enabled.

Update: This was reported as a known issue in ILOM 3.0.9. This issue was fixed as of ILOM 3.0.9 by adding workaround instructions to the *Oracle ILOM 3.0 Feature Updates and Release Notes*. For workaround instructions, see [“DIMM FRU Data Fields Are Null After Downgrading or Upgrading SP Firmware Between 3.0.3 and 3.0.9”](#) on page 43.

Service Snapshot Utility Unable to Collect SP Data When IE Web Browser Security Option Is Enabled

CR 6877868

Issue: If the Internet Explorer (IE) web browser `Security` option for `Save Encrypted Pages To Disk` is enabled, an error message appears when attempting to collect SP data using the Service Snapshot Utility.

Update: This was reported as a known issue in ILOM 3.0.9. This issue was fixed as of ILOM 3.0.9 by adding workaround instructions to the *Oracle ILOM 3.0 Feature Updates and Release Notes*. For workaround instructions, see [“Service Snapshot Utility Unable to Collect SP Data When IE Web Browser Security Option Is Enabled”](#) on page 44.

Updated Documentation Describing Storage Redirection 32-bit JDK Requirement

CR 6938720

Issue: The service for the Storage Redirection CLI feature in ILOM fails to start if the 64-bit JDK file type is specified to start the service.

Update: Procedures have been added to the *Oracle Integrated Lights Out Manager (ILOM) 3.0 CLI Procedures Guide* (820-6412) instructing users to specify the 32-bit JDK file when using either the FireFox web browser or Internet Explorer web browser.

Updated Documentation Describing ILOM Remote Console 32-bit JDK Requirement

CR 6938720

Issue: The ILOM Remote Console feature fails to launch if the 64-bit JDK file type is specified by the web browser.

Update: Procedures have been added to the *Oracle Integrated Lights Out Manager (ILOM) 3.0 Web Interface Procedures Guide (820-6410)* instructing users to specify the 32-bit JDK file when using either the FireFox web browser or Internet Explorer web browser.

DVD Redirection From Solaris Client to RHEL Host Requires Manual Mount

CR 6876387

Issue: When you redirect a DVD (physical driver or image file) from Oracle Solaris to Red Hat Enterprise Linux (RHEL), the floppy and CD-ROM icon will appear in RHEL, but when you click the CD-ROM icon you are unable to see the content of the DVD.

Update: This was reported as a known issue in ILOM 3.0.10. This issue was fixed as of ILOM 3.0.10 by adding workaround instructions to the *Oracle ILOM 3.0 Feature Updates and Release Notes*. For workaround instructions, see [“DVD Redirection From Solaris Client to RHEL Host Requires Manual Mount”](#) on page 49.

ILOM Web Interface Unable to Connect to SP When Using Internet Explorer 6

CR 6934155

Issue. Due to increased SSL security in ILOM, Internet Explorer (IE) 6 is unable to launch the ILOM SP web interface over HTTPS.

Update: This was reported as a known issue in ILOM 3.0.10. This issue was fixed as of ILOM 3.0.10 by adding workaround instructions to the *Oracle ILOM 3.0 Feature Updates and Release Notes*. For workaround instructions, see [“ILOM Web Interface Unable to Connect to SP When Using Internet Explorer 6”](#) on page 54.

Known Issues as of ILOM 3.0.14

Topics

No known issues reported
