

# SPARC Enterprise M8000/M9000 Servers

## Fan Tray Retention Kit

This document describes how to replace an existing FAN Unit fixing bracket with a new more secure FAN Unit fixing bracket. The new bracket restricts the FAN Unit movement to less than 3.2 mm to prevent accidental unseating and loss of cooling.

The FAN Unit fixing bracket is located vertically between the FAN Units. The brackets have a hinge on the bottom and a screw on the top and secure the fans in place. The retention kit includes a fixing bracket tool (345-1443-01) to simplify the loosening of the hinge pin.

This is a hot-swap procedure that can be implemented while the system is running.

## Locating the FAN Unit Fixing Bracket

Compare the part number of the bracket with the location of the bracket being replaced using the tables below.

**TABLE 1** SPARC Enterprise M8000 Server

Bracket Part Number	Bracket location	Number of Brackets
541-3413-01	System Rear	2
541-3420-01	System Front (Left)	1
541-3407-01	System Front (Right)	1

**TABLE 2** SPARC Enterprise M9000 Server

Bracket Part Number	Bracket location	Number of Brackets
541-3407-01	System Front	1
541-3410-01	System Rear	2

---

## Replacing the FAN Unit Fixing Bracket

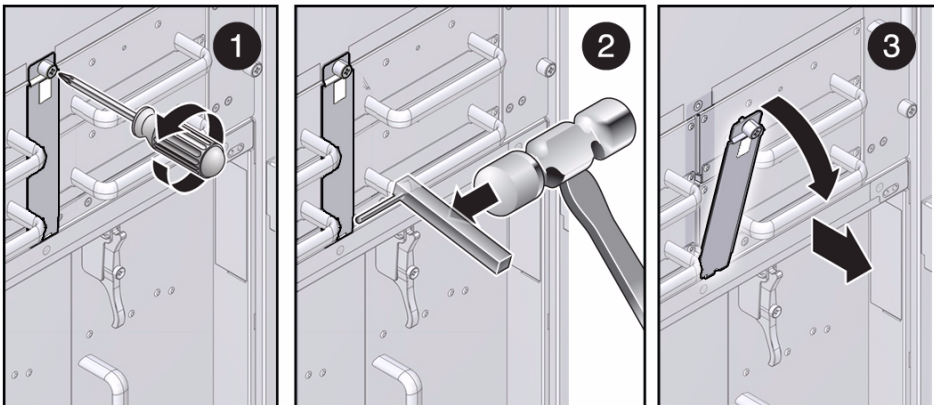
1. Unlock and open the server doors.
2. Use a Phillips No. 2 screwdriver to loosen the screw at the top of the fixing bracket.  
Leave the screw attached until after the pin is removed to prevent the fixing bracket from falling.
3. Place the fixing bracket tool so that it is flush to the chassis and use a nylon tipped hammer or mallet to tap the hinge pin out of the old fixing bracket (the hinge pin should remain in the hinge).  
To avoid bending the fixing bracket tool, orient the tool handle horizontally so that the pin on the tool aligns with the hinge pin.

---

**Note** – On the M8000 server, the hinge pin of the fixing bracket at the bottom right of the front of the M8000 server will hit the fan tray cage handle as it is tapped out of the bracket. When this happens, gently bend the hinge pin downward, as it is being pushed out of the old fixing bracket. (The pin can not be removed from the hinge until the bracket is removed.) A replacement pin is included in the kit.

---

4. Use a Phillips No. 2 screwdriver to remove the screw at the top of the fixing bracket and remove the bracket.



---

**Note** – Discard the bent hinge pin. Use a new hinge pin in [Step 6](#) below.

---

5. Place the new bracket in position, and align the parts of hinge.

The bracket can be held vertically or horizontally during the alignment.

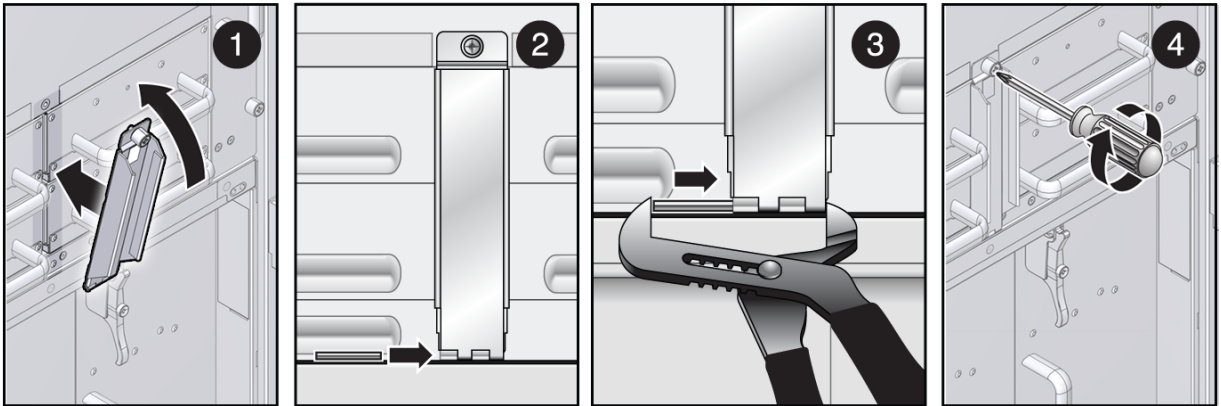
6. Use a slip groove plier to carefully push the hinge pin into the hinge.



**Caution** – The pin bends easily. Alternately, you can use the back end of the fixing bracket tool and the nylon hammer to tap the pin into the hinge.

7. Use a Phillips No. 2 screwdriver to secure the screw at the top of the fixing bracket.

8. Repeat Step 1 through Step 7 for each FAN Unit fixing bracket to be replaced.



---

## Product Documentation

You can view, print, or purchase a broad selection of documentation, including localized versions, at:  
<http://www.oracle.com/technetwork/indexes/documentation/index.html>

## Technical Support

If you have technical questions about this product that are not answered in this document, go to:  
<https://support.oracle.com>

Copyright © 2009, 2011, Oracle and/or its affiliates. All rights reserved.  
Copyright © 2009, 2011, Oracle et/ou ses affiliés. Tous droits réservés.



Part No.: E22107-01  
Mfg No.: 820-5635-12  
March 2011