

# Sun Java Enterprise System Roadmap

Sun Java™ Enterprise System is a software system that supports a wide range of enterprise computing needs, such as creating a secure intranet portal to provide the employees of an enterprise with secure access to email and in-house business applications.

Java Enterprise System is composed of software components, such as Sun™ ONE Directory Server and Sun ONE Identity Server. To meet the computing needs of different enterprises, Java Enterprise System components can be installed and configured in many different ways.

Each enterprise assesses its own needs and plans its own deployment of Java Enterprise System. The optimal deployment for each enterprise depends on the types of applications that Java Enterprise System is supporting, the number of users, the kind of hardware that is available, and similar considerations.

This document summarizes the information that is available to help your enterprise plan a Java Enterprise System deployment, install the software, and administer the installed Java Enterprise System. The information is presented in two sections:

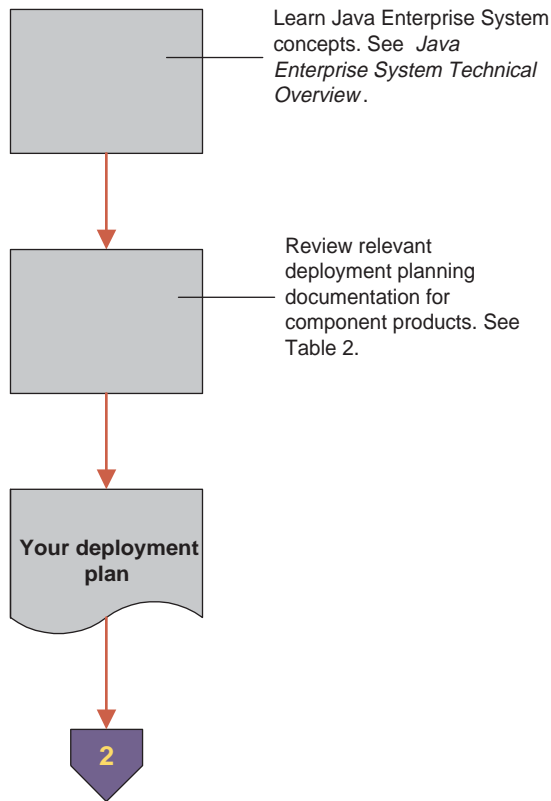
- [“Java Enterprise System Task Flow” on page 2](#) identifies the tasks that you perform to plan a Java Enterprise System deployment, install the deployment you plan, and administer your installed Java Enterprise System. These tasks are identified graphically in a series of flow diagrams.
- [“Java Enterprise System Documentation” on page 6](#) identifies documentation that covers the tasks that are identified in the task flow. This section contains tables that match tasks to documentation resources. You can look up a task and find a list of documents that support the task.ueee

# Java Enterprise System Task Flow

This section uses a set of flow diagrams to show the major tasks that you perform to plan a Java Enterprise System deployment, install the components in your planned deployment, and administer the installed Java Enterprise System.

[Figure 1](#) shows the flow of tasks for learning about Java Enterprise System and planning a deployment that meets your enterprise computing needs. For more information about these tasks, see [Table 2](#).

**Figure 1** Designing a Java Enterprise System Deployment



[Figure 2](#) shows the flow of tasks you perform to plan an installation of Java Enterprise System components that implements your deployment plan. For more information about these tasks, see [Table 3](#).

**Figure 2** Preinstallation Planning for Java Enterprise System

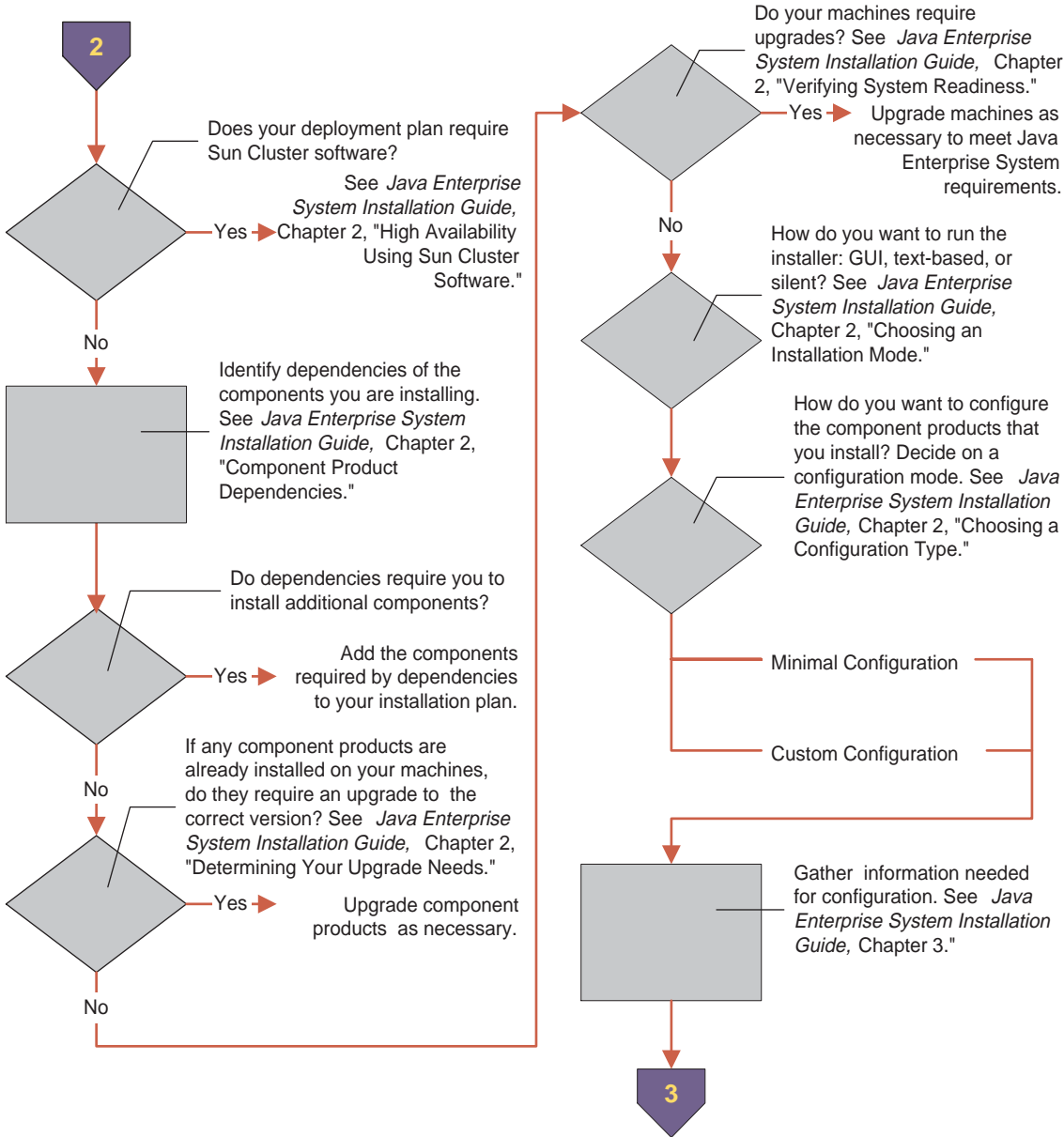


Figure 3 shows the flow of tasks you perform to run the Java Enterprise System installer. For more information about these tasks, see Table 3.

**Figure 3** Installing Java Enterprise System

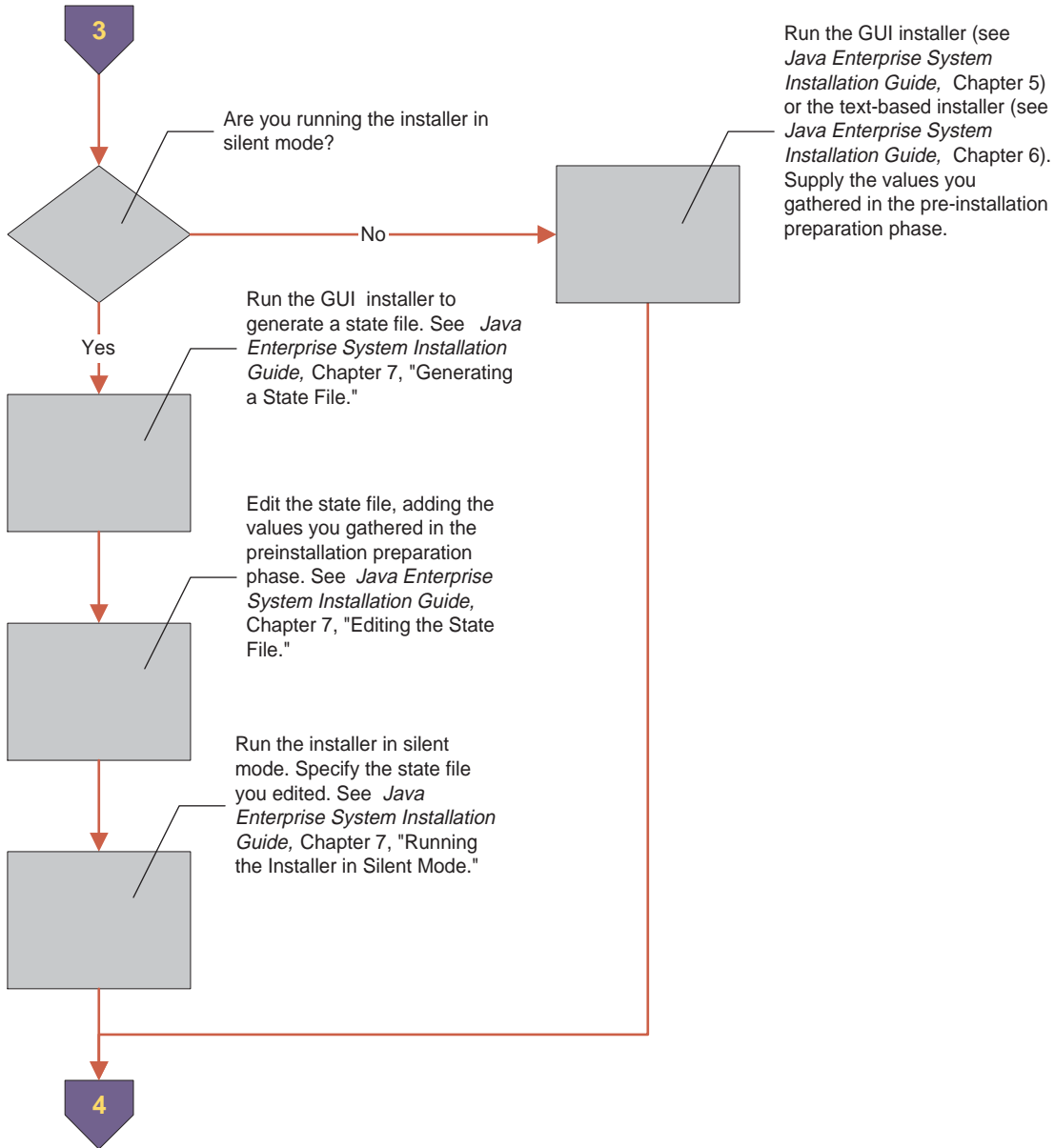


Figure 4 shows the flow of tasks you perform immediately after you install Java Enterprise System to complete the configuration of the components. For more information about these tasks, see Table 3.

**Figure 4** Postinstallation Configuration of Java Enterprise System Components

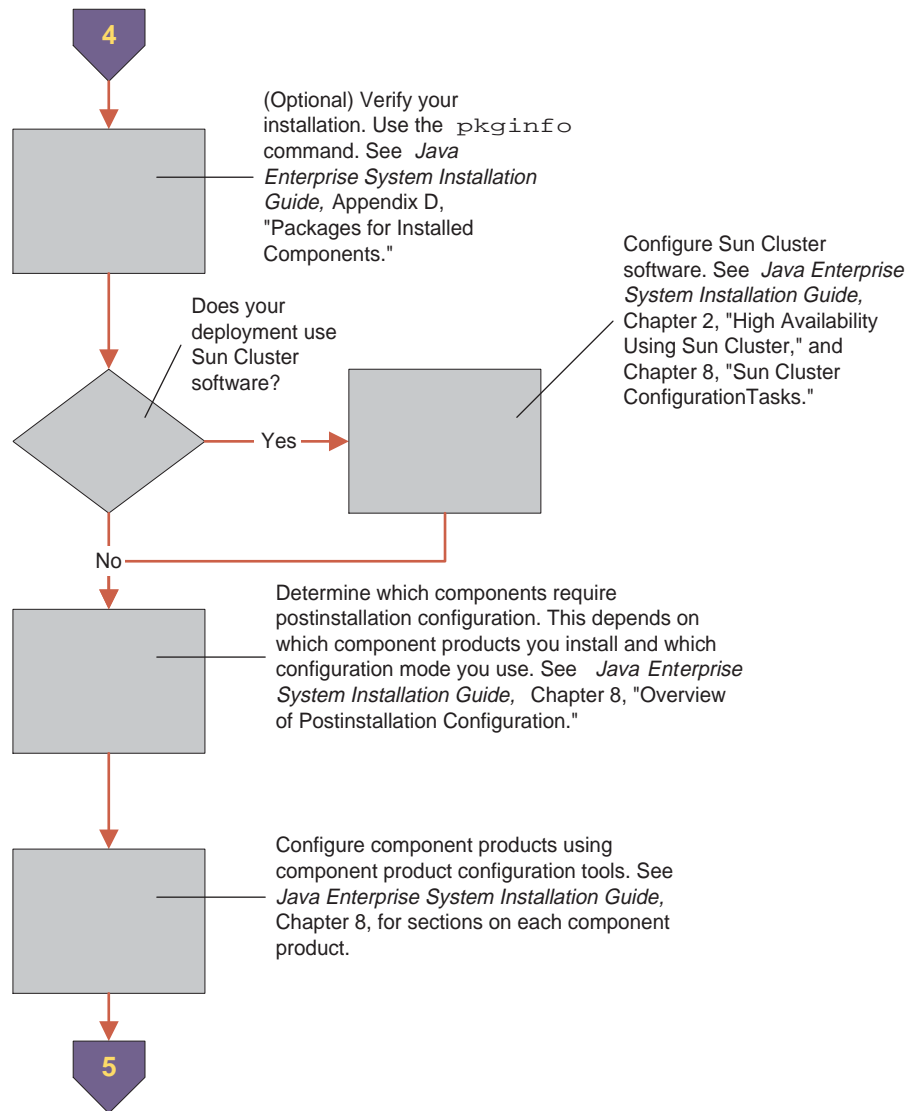
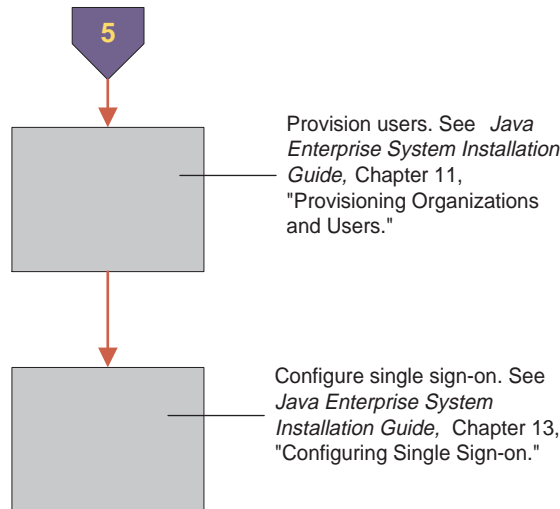


Figure 5 shows the flow of tasks you perform to administer your Java Enterprise System. For more information about these tasks see Table 4.

**Figure 5** Administering Java Enterprise System



## Java Enterprise System Documentation

Documentation for Java Enterprise System includes the Java Enterprise System collection, which covers the system as a whole, and component product collections, which cover the system components in detail. This section contains tables that help you find useful documentation from all of these collections.

- [Table 1](#) lists documentation by product. The first product is Java Enterprise System, and all documents in the Java Enterprise System collection are listed. After Java Enterprise System, component products are listed in alphabetical order, and the most relevant documents for each product are listed.
- [Table 2](#), [Table 3](#), and [Table 4](#) are organized by task. Each table covers a set of related tasks. For each task, relevant documents in the Java Enterprise System collection and the component product collections are listed. To use these tables, locate a task in the first column ("For Information About...") and move to the second and third columns to see relevant documents.

Documents listed in the tables are available at <http://docs.sun.com/prod/entsys.03q4>. You can read these documents online or download them for printing.

**Table 1** Java Enterprise System Documentation

Product	Documentation Collection	Relevant Documents
Java Enterprise System	Sun Java Enterprise System 2003Q4	<ul style="list-style-type: none"> <li>• <i>Java Enterprise System Release Notes</i> Contains the latest information about Java Enterprise System, including known issues. In addition, component products have their own release notes.</li> <li>• <i>Java Enterprise System Technical Overview</i> Introduction to concepts and terminology of the Java Enterprise System. Describes system components and provides an overview of system deployment.</li> <li>• <i>Java Enterprise System Installation Guide</i> Guides you through the process of installing your Java Enterprise System deployment. Shows you how to select the component products that you want to install, how to configure the component products that you install, and how to verify that the software you install functions properly. Describes how to perform basic administration tasks, including provisioning users and setting up single sign-on.</li> <li>• <i>Java Enterprise System Glossary</i> Defines terms that are used in the Java Enterprise System documentation.</li> </ul>
Sun Cluster 3.1 and Sun ONE Agents for Sun Cluster	Sun Cluster 3.1 Software Collection	<ul style="list-style-type: none"> <li>• <i>Sun Cluster 3.1 Release Notes</i></li> <li>• <i>Sun Cluster 3.1 Concepts Guide</i></li> <li>• <i>Sun Cluster 3.1 Software Installation Guide</i></li> <li>• <i>Sun Cluster 3.1 System Administration Guide</i></li> </ul>
	Sun Cluster 3.1 Data Services 10/03 Collection	<i>Sun Cluster 3.1 Data Service Planning and Administration Guide</i>
Sun ONE Administration Server 5.2	Sun ONE Directory Server 5.2 (Multi-Platform Edition) Collection	<i>Sun ONE Server Console 5.2 Server Management Guide</i>
Sun ONE Application Server 7, Update 1	Sun ONE Application Server 7 Update 1 Collection	<ul style="list-style-type: none"> <li>• <i>Sun ONE Application Server 7 Release Notes</i></li> <li>• <i>Sun ONE Application Server 7 Product Introduction</i></li> <li>• <i>Sun ONE Application Server 7 Getting Started Guide</i></li> <li>• <i>Sun ONE Application Server 7 Administrator's Guide</i></li> </ul>
Sun ONE Calendar Server 6.0	Sun ONE Calendar Server 6.0 Collection	<ul style="list-style-type: none"> <li>• <i>Sun ONE Calendar Server 6.0 Release Notes</i></li> <li>• <i>Sun ONE Calendar Server 6.0 Installation Guide</i></li> <li>• <i>Sun ONE Calendar Server 6.0 Administrator's Guide</i></li> <li>• <i>Sun ONE Messaging and Collaboration 6.0 Schema Reference Manual</i></li> </ul>

**Table 1** Java Enterprise System Documentation (*Continued*)

<b>Product</b>	<b>Documentation Collection</b>	<b>Relevant Documents</b>
Sun ONE Directory Server 5.2	Sun ONE Directory Server 5.2 Collection	<ul style="list-style-type: none"> <li>• <i>Sun ONE Directory Server 5.2 Release Notes</i></li> <li>• <i>Sun ONE Directory Server 5.2 Product Brief</i></li> <li>• <i>Sun ONE Directory Server 5.2 Installation and Tuning Guide</i></li> <li>• <i>Sun ONE Directory Server 5.2 Deployment Guide</i></li> <li>• <i>Sun ONE Directory Server 5.2 Administration Guide</i></li> </ul>
Sun ONE Directory Proxy Server 5.2	Sun ONE Directory Proxy Server 5.2 Collection	<ul style="list-style-type: none"> <li>• <i>Sun ONE Directory Proxy Server 5.2 Release Notes</i></li> <li>• <i>Sun ONE Directory Proxy Server 5.2 Installation Guide</i></li> <li>• <i>Sun ONE Directory Proxy Server 5.2 Administrator's Guide</i></li> </ul>
Sun ONE Identity Server 6.1	Sun ONE Identity Server Collection	<ul style="list-style-type: none"> <li>• <i>Sun ONE Identity Server 6.1 Product Brief</i></li> <li>• <i>Sun ONE Identity Server 6.1 Deployment Guide</i></li> <li>• <i>Sun ONE Identity Server 6.1 Administration Guide</i></li> </ul>
Sun ONE Instant Messaging 6.1	Sun ONE Instant Messaging 6.1 Collection	<ul style="list-style-type: none"> <li>• <i>Sun ONE Instant Messaging 6.1 Release Notes</i></li> <li>• <i>Sun ONE Instant Messaging 6.1 Deployment Guide</i></li> <li>• <i>Sun ONE Instant Messaging 6.1 Administrator's Guide</i></li> <li>• <i>Sun ONE Instant Messaging 6.1 Installation Guide</i></li> </ul>
Sun ONE Message Queue 3.0.1 Service Pack 2	Sun ONE Message Queue 3.0.1 Service Pack 2 Collection	<ul style="list-style-type: none"> <li>• <i>Sun ONE Message Queue 3.0.1 Service Pack 2, Release Notes</i></li> <li>• <i>Sun ONE Message Queue 3.0.1 Service Pack 2 Installation Guide</i></li> <li>• <i>Sun ONE Message Queue Administrator's Guide 3.0.1</i></li> </ul>
Sun ONE Messaging Server 6.0	Sun ONE Messaging Server 6.0 Collection	<ul style="list-style-type: none"> <li>• <i>Sun ONE Messaging Server 6.0 Release Notes</i></li> <li>• <i>Sun ONE Messaging Server 6.0 Installation Guide for Solaris OS</i></li> <li>• <i>Sun ONE Messaging Server 6.0 Administrator's Guide</i></li> <li>• <i>Sun ONE Messaging and Collaboration User Management Utility 1.0 Installation and Reference Guide</i></li> </ul>
Sun ONE Portal Server 6.2	Sun ONE Portal Server 6.2 Collection	<ul style="list-style-type: none"> <li>• <i>Sun ONE Portal Server 6.2 Release Notes</i></li> <li>• <i>Sun ONE Portal Server 6.2 Deployment Guide</i></li> <li>• <i>Sun ONE Portal Server 6.2 Installation Guide</i></li> </ul>
Sun ONE Portal Server, Secure Remote Access 6.2	Sun ONE Portal Server 6.2 Collection	<ul style="list-style-type: none"> <li>• <i>Sun ONE Portal Server, Secure Remote Access 6.2 Administrator's Guide</i></li> </ul>



**Table 1** Java Enterprise System Documentation (*Continued*)

Product	Documentation Collection	Relevant Documents
Sun ONE Web Server 6.1	Sun ONE Web Server 6.1 Collection	<ul style="list-style-type: none"> <li>• <i>Release Notes for Sun ONE Web Server 6.1</i></li> <li>• <i>Sun ONE Web Server 6.1 Getting Started Guide</i></li> <li>• <i>Sun ONE Web Server 6.1 Administrator's Guide</i></li> </ul>

[Table 2](#) lists documents that help you plan a Java Enterprise System deployment. For a flow diagram of these tasks, see [Figure 1](#).

**Table 2** Planning a Java Enterprise System Deployment

For Information About...	See These Documents	See These Chapters
The concepts behind the Java Enterprise System	<i>Java Enterprise System Technical Overview</i>	Explains how the Java Enterprise System supports enterprise applications.
	<i>Java Enterprise System Installation Guide</i>	Chapter 1 introduces Java Enterprise System and the component products.
The concepts behind individual Java Enterprise System components	<i>Sun Cluster 3.1 Concepts Guide</i>	Covers the basic concepts of Sun Cluster 3.1 software.
	<i>Sun ONE Server Console 5.2 Server Management Guide</i>	Introduces the basic features of Sun ONE Administration Server 5.2.
	<i>Sun ONE Application Server 7 Product Introduction</i>	Introduces the basic features of Sun ONE Application Server 7.
	<i>Sun ONE Calendar Server 6.0 Administrator's Guide</i>	Chapter 1 introduces the basic features of Sun ONE Calendar Server 6.0.
	<i>Sun ONE Directory Server 5.2 Product Brief</i>	Introduces the basic features of the Sun ONE Directory Server 5.2.
	<i>Sun ONE Directory Server 5.2 Getting Started Guide</i>	Chapter 2, "Introduction to the Sun ONE Directory Server."
	<i>Sun ONE Directory Proxy Server 5.2 Administrator's Guide</i>	Chapter 1, "Overview of the Sun ONE Directory Proxy Server."
	<i>Sun ONE Identity Server 6.1 Product Brief</i>	Entire manual introduces the basic features of Sun ONE Identity Server 6.1.
<i>Sun ONE Message Queue Administrator's Guide 3.0.1</i>	Chapter 1, "Overview."	
<i>Sun ONE Web Server 6.1 Getting Started Guide</i>	Introduces the basic features of Sun ONE Web Server 6.1.	

**Table 2** Planning a Java Enterprise System Deployment (*Continued*)

<b>For Information About...</b>	<b>See These Documents</b>	<b>See These Chapters</b>
Planning a Java Enterprise System deployment	<i>Java Enterprise System Technical Overview</i>	Entire manual.
	<i>Sun Cluster 3.1 Software Installation Guide</i>	Chapter 1, "Planning the Sun Cluster Configuration," and Appendix A, "Sun Cluster Installation and Configuration Worksheets."
	<i>Sun ONE Calendar Server 6.0 Administrator's Guide</i>	Chapter 1 includes the section "Calendar Server Configurations."
	<i>Sun ONE Directory Server 5.2 Deployment Guide</i>	Chapter 1, "Directory Server Design and Deployment Overview."
	<i>Sun ONE Directory Proxy Server 5.2 Installation Guide</i>	Chapter 1, "Preparing for Installation."
	<i>Sun ONE Directory Proxy Server 5.2 Administrator's Guide</i>	Chapter 2, "Sun ONE Directory Proxy Server Deployment Scenarios."
	<i>Sun ONE Identity Server 6.1 Deployment Guide</i>	Chapter 3, "Planning the Deployment" and Chapter 5, "Deployment Scenarios."
	<i>Sun ONE Messaging and Collaboration 6.0 Schema Reference Manual</i>	Chapter 1, "Overview," contains descriptions of Sun ONE LDAP schema v.1 and Sun ONE LDAP schema v.2 and their uses.
<i>Sun ONE Portal Server 6.2 Deployment Guide</i>	Chapter 4, "Analyzing Your Portal Requirement," Chapter 5, "Sizing Your Portal," and Chapter 6, "Understanding the Portal Deployment Process."	

Table 3 lists documents that help you install Java Enterprise System. For a flow diagram of these tasks, see [Figure 2](#), [Figure 3](#), and [Figure 4](#).

**Table 3** Installing Java Enterprise System

<b>For Information About...</b>	<b>See These Documents</b>	<b>See These Chapters</b>
Preinstallation planning for a Java Enterprise System Installation	<i>Java Enterprise System Installation Guide</i>	Chapters 1,2, 3, and the worksheets in Appendix A.
	<i>Sun Cluster 3.1 Software Installation Guide</i>	Chapter 1, "Planning the Sun Cluster Configuration."
Running the Java Enterprise System installer	<i>Java Enterprise System Installation Guide</i>	Chapter 5, or 6, or 7, depending on the installer mode you choose.
Postinstallation configuration of Java Enterprise System components	<i>Java Enterprise System Installation Guide</i>	Chapters 8 and 9.
	<i>Sun Cluster 3.1 Software Installation Guide</i>	Chapter 2, "Installing and Configuring the Sun Cluster Software."
	<i>Sun Cluster 3.1 System Administration Guide</i>	Chapter 1, "Introduction to Administering Sun Cluster."
	<i>Sun ONE Application Server Administrator's Guide</i>	Part 1, "Server Basics and Administering Global Settings."
	<i>Sun ONE Calendar Server 6.0 Administrator's Guide</i>	Chapter 1 has the section "Calendar Server Installation and Configuration."
	<i>Sun ONE Directory Server 5.2 Getting Started Guide</i>	Entire manual introduces Sun ONE Directory Server 5.2 features and administration tools.
	<i>Sun ONE Identity Server 6.1 Administration Guide</i>	Chapter 1, "Product Overview," introduces administering Sun ONE Identity Server 6.1.

**Table 4** lists documents that help you administer Java Enterprise System. For a flow diagram of these tasks, see [Figure 5](#).

**Table 4** Administering a Java Enterprise System Deployment

<b>For Information About...</b>	<b>See These Documents</b>	<b>See These Chapters</b>
Configuring single sign-on	<i>Java Enterprise System Installation Guide</i>	Chapter 13, "Configuring Single Sign-on."
Provisioning users and organizations	<i>Java Enterprise System Installation Guide</i>	Chapter 11, "Provisioning Organizations and Users," explains the concept of Sun Java Enterprise System users, who can use all of the Sun ONE products. Also Chapter 12, "Provisioning and Schema Concepts for Messaging Server 6.0," and Appendix G, "User Provisioning with Identity Server."
	<i>Sun ONE Messaging and Collaboration 6.0 User Management Utility Installation and Reference Guide</i>	This guide explains how to install and configure the Sun ONE User Management Utility. The guide also describes the User Management Utility commands, including syntax and examples.
	<i>Sun ONE Calendar Server 6.0 Administrator's Guide</i>	Chapter 2, "Managing Calendar Server Users and Calendars," contains a section on provisioning new calendar users.
Administering Sun Cluster software	<i>Sun Cluster 3.1 System Administration Guide</i>	Entire manual.
Administering Sun ONE Application Server	<i>Sun ONE Application Server 7 Administrator's Guide</i>	Part 1, "Server Basics and Administering Global Settings," contains information that applies to most deployments of Java Enterprise System.
Administering Sun ONE Calendar Server	<i>Sun ONE Calendar Server 6.0 Administrator's Guide</i>	Chapter 1, "Introduction to Sun ONE Calendar Server," and Chapter 3, "Managing Calendar Server," contain information that applies to most deployments of Java Enterprise System.
Administering Sun ONE Directory Server 5.2	<i>Sun ONE Directory Server 5.2 Administration Guide</i>	Entire manual; covers topics such as directory tree structure, populating the directory, managing user accounts.
Administering Sun ONE Identity Server 6.1	<i>Sun ONE Identity Server 6.1 Administration Guide</i>	Entire manual.
Administering Sun ONE Message Queue 3.0.1, Service Pack 2	<i>Sun ONE Message Queue Administrator's Guide 3.0.1</i>	Entire manual.

# Sun Welcomes Your Comments

Sun is interested in improving its documentation and welcomes your comments and suggestions. Use the web-based form to provide feedback to Sun:

<http://www.sun.com/hwdocs/feedback/>

Please provide the full document title and part number in the appropriate fields. The part number can be found on the title page of the book or at the top of the document, and is usually a seven or nine digit number. For example, the part number of this document is 817-4715-10. The full title is Sun Java Enterprise System 2003Q4 Roadmap.

---

Copyright © 2003 Sun Microsystems, Inc. All rights reserved.

Sun Microsystems, Inc. has intellectual property rights relating to technology embodied in the product that is described in this document. In particular, and without limitation, these intellectual property rights may include one or more of the U.S. patents listed at <http://www.sun.com/patents> and one or more additional patents or pending patent applications in the U.S. and in other countries.

SUN PROPRIETARY/CONFIDENTIAL.

U.S. Government Rights - Commercial software. Government users are subject to the Sun Microsystems, Inc. standard license agreement and applicable provisions of the FAR and its supplements.

Use is subject to license terms.

This distribution may include materials developed by third parties.

Portions may be derived from Berkeley BSD systems, licensed from U. of CA.

Sun, Sun Microsystems, the Sun logo, Java and Solaris are trademarks or registered trademarks of Sun Microsystems, Inc. in the U.S. and other countries. All SPARC trademarks are used under license and are trademarks or registered trademarks of SPARC International, Inc. in the U.S. and other countries.

---

Copyright © 2003 Sun Microsystems, Inc. Tous droits réservés.

Sun Microsystems, Inc. détient les droits de propriété intellectuelle relatifs à la technologie incorporée dans le produit qui est décrit dans ce document. En particulier, et ce sans limitation, ces droits de propriété intellectuelle peuvent inclure un ou plus des brevets américains listés à l'adresse <http://www.sun.com/patents> et un ou les brevets supplémentaires ou les applications de brevet en attente aux Etats - Unis et dans les autres pays.

Propriété de SUN/CONFIDENTIEL.

L'utilisation est soumise aux termes du contrat de licence.

Cette distribution peut comprendre des composants développés par des tierces parties.

Des parties de ce produit pourront être dérivées des systèmes Berkeley BSD licenciés par l'Université de Californie.

Sun, Sun Microsystems, le logo Sun, Java et Solaris sont des marques de fabrique ou des marques déposées de Sun Microsystems, Inc. aux Etats-Unis et dans d'autres pays.

Toutes les marques SPARC sont utilisées sous licence et sont des marques de fabrique ou des marques déposées de SPARC International, Inc. aux Etats-Unis et dans d'autres pays.