



Sun Java™ System

# Connector for Microsoft Outlook 7 Administration Guide

---

2005Q1

Sun Microsystems, Inc.  
4150 Network Circle  
Santa Clara, CA 95054  
U.S.A.

Part No: 819-0027-10

Copyright © 2005 Sun Microsystems, Inc., 4150 Network Circle, Santa Clara, California 95054, U.S.A. All rights reserved.

Sun Microsystems, Inc. has intellectual property rights relating to technology embodied in the product that is described in this document. In particular, and without limitation, these intellectual property rights may include one or more of the U.S. patents listed at <http://www.sun.com/patents> and one or more additional patents or pending patent applications in the U.S. and in other countries.

THIS PRODUCT CONTAINS CONFIDENTIAL INFORMATION AND TRADE SECRETS OF SUN MICROSYSTEMS, INC. USE, DISCLOSURE OR REPRODUCTION IS PROHIBITED WITHOUT THE PRIOR EXPRESS WRITTEN PERMISSION OF SUN MICROSYSTEMS, INC.

U.S. Government Rights - Commercial software. Government users are subject to the Sun Microsystems, Inc. standard license agreement and applicable provisions of the FAR and its supplements.

This distribution may include materials developed by third parties.

Parts of the product may be derived from Berkeley BSD systems, licensed from the University of California. UNIX is a registered trademark in the U.S. and in other countries, exclusively licensed through X/Open Company, Ltd.

Sun, Sun Microsystems, the Sun logo, Java, Solaris, JDK, Java Naming and Directory Interface, JavaMail, JavaHelp, J2SE, iPlanet, the Duke logo, the Java Coffee Cup logo, the Solaris logo, the SunTone Certified logo and the Sun ONE logo are trademarks or registered trademarks of Sun Microsystems, Inc. in the U.S. and other countries.

All SPARC trademarks are used under license and are trademarks or registered trademarks of SPARC International, Inc. in the U.S. and other countries. Products bearing SPARC trademarks are based upon architecture developed by Sun Microsystems, Inc.

Legato and the Legato logo are registered trademarks, and Legato NetWorker, are trademarks or registered trademarks of Legato Systems, Inc. The Netscape Communications Corp logo is a trademark or registered trademark of Netscape Communications Corporation.

The OPEN LOOK and Sun(TM) Graphical User Interface was developed by Sun Microsystems, Inc. for its users and licensees. Sun acknowledges the pioneering efforts of Xerox in researching and developing the concept of visual or graphical user interfaces for the computer industry. Sun holds a non-exclusive license from Xerox to the Xerox Graphical User Interface, which license also covers Sun's licensees who implement OPEN LOOK GUIs and otherwise comply with Sun's written license agreements.

This product includes software developed by Computing Services at Carnegie Mellon University (<http://www.cmu.edu/computing/>).

Products covered by and information contained in this service manual are controlled by U.S. Export Control laws and may be subject to the export or import laws in other countries. Nuclear, missile, chemical biological weapons or nuclear maritime end uses or end users, whether direct or indirect, are strictly prohibited. Export or reexport to countries subject to U.S. embargo or to entities identified on U.S. export exclusion lists, including, but not limited to, the denied persons and specially designated nationals lists is strictly prohibited.

DOCUMENTATION IS PROVIDED "AS IS" AND ALL EXPRESS OR IMPLIED CONDITIONS, REPRESENTATIONS AND WARRANTIES, INCLUDING ANY IMPLIED WARRANTY OF MERCHANTABILITY, FITNESS FOR A PARTICULAR PURPOSE OR NON-INFRINGEMENT, ARE DISCLAIMED, EXCEPT TO THE EXTENT THAT SUCH DISCLAIMERS ARE HELD TO BE LEGALLY INVALID.

---

Copyright © 2005 Sun Microsystems, Inc., 4150 Network Circle, Santa Clara, California 95054, Etats-Unis. Tous droits réservés.

Sun Microsystems, Inc. détient les droits de propriété intellectuelle relatifs à la technologie incorporée dans le produit qui est décrit dans ce document. En particulier, et ce sans limitation, ces droits de propriété intellectuelle peuvent inclure un ou plusieurs des brevets américains listés à l'adresse <http://www.sun.com/patents> et un ou des brevets supplémentaires ou des applications de brevet en attente aux Etats - Unis et dans les autres pays.

CE PRODUIT CONTIENT DES INFORMATIONS CONFIDENTIELLES ET DES SECRETS COMMERCIAUX DE SUN MICROSYSTEMS, INC. SON UTILISATION, SA DIVULGATION ET SA REPRODUCTION SONT INTERDITES SANS L'AUTORISATION EXPRESSE, ECRITE ET PREALABLE DE SUN MICROSYSTEMS, INC.

Cette distribution peut comprendre des composants développés par des tierces parties.

Des parties de ce produit peuvent être dérivées des systèmes Berkeley BSD licenciés par l'Université de Californie. UNIX est une marque déposée aux Etats-Unis et dans d'autres pays et licenciée exclusivement par X/Open Company, Ltd.

Sun, Sun Microsystems, le logo Sun, Java, Solaris, JDK, Java Naming and Directory Interface, JavaMail, JavaHelp, J2SE, iPlanet, le logo Duke, le logo Java Coffee Cup, le logo Solaris, le logo SunTone Certified et le logo Sun[tm] ONE sont des marques de fabrique ou des marques déposées de Sun Microsystems, Inc. aux Etats-Unis et dans d'autres pays.

Toutes les marques SPARC sont utilisées sous licence et sont des marques de fabrique ou des marques déposées de SPARC International, Inc. aux Etats-Unis et dans d'autres pays. Les produits portant les marques SPARC sont basés sur une architecture développée par Sun Microsystems, Inc.

Legato, le logo Legato, et Legato NetWorker sont des marques de fabrique ou des marques déposées de Legato Systems, Inc. Le logo Netscape Communications Corp est une marque de fabrique ou une marque déposée de Netscape Communications Corporation.

L'interface d'utilisation graphique OPEN LOOK et Sun(TM) a été développée par Sun Microsystems, Inc. pour ses utilisateurs et licenciés. Sun reconnaît les efforts de pionniers de Xerox pour la recherche et le développement du concept des interfaces d'utilisation visuelle ou graphique pour l'industrie de l'informatique. Sun détient une licence non exclusive de Xerox sur l'interface d'utilisation graphique Xerox, cette licence couvrant également les licenciés de Sun qui mettent en place l'interface d'utilisation graphique OPEN LOOK et qui, en outre, se conforment aux licences écrites de Sun.

Ce produit comprend du logiciel développé par Computing Services à Carnegie Mellon University (<http://www.cmu.edu/computing/>).

Les produits qui font l'objet de ce manuel d'entretien et les informations qu'il contient sont régis par la législation américaine en matière de contrôle des exportations et peuvent être soumis au droit d'autres pays dans le domaine des exportations et importations. Les utilisations finales, ou utilisateurs finaux, pour des armes nucléaires, des missiles, des armes biologiques et chimiques ou du nucléaire maritime, directement ou indirectement, sont strictement interdites. Les exportations ou réexportations vers des pays sous embargo de Etats-Unis, ou vers des entités figurant sur les listes d'exclusion d'exportation américaines, y compris, mais de manière non exclusive, la liste de personnes qui font objet d'un ordre de ne pas participer, d'une façon directe ou indirecte, aux exportations des produits ou des services qui sont régi par la législation américaine en matière de contrôle des exportations et la liste de ressortissants spécifiquement désignés, sont rigoureusement interdites.

LA DOCUMENTATION EST FOURNIE "EN L'ETAT" ET TOUTES AUTRES CONDITIONS, DECLARATIONS ET GARANTIES EXPRESSES OU TACITES SONT FORMELLEMENT EXCLUES, DANS LA MESURE AUTORISEE PAR LA LOI APPLICABLE, Y COMPRIS NOTAMMENT TOUTE GARANTIE IMPLICITE RELATIVE A LA QUALITE MARCHANDE, A L'APTITUDE A UNE UTILISATION PARTICULIERE OU A L'ABSENCE DE CONTREFACON.

# Contents

<b>List of Figures</b> .....	<b>5</b>
<b>Preface</b> .....	<b>7</b>
Who Should Use This Book .....	7
Before You Read This Book .....	7
How This Book Is Organized .....	7
Conventions Used in This Book .....	8
Typographic Conventions .....	8
Symbols .....	9
Related Documentation .....	10
Books in This Documentation Set .....	10
Other Server Documentation .....	10
Accessing Sun Resources Online .....	11
Contacting Sun Technical Support .....	11
Related Third-Party Web Site References .....	11
Sun Welcomes Your Comments .....	11
<b>Chapter 1 Getting Started</b> .....	<b>13</b>
Introduction and Orientation .....	13
Administrator's Process Overview .....	14
<b>Chapter 2 Configuring End-User Packages</b> .....	<b>17</b>
Processes Tab .....	19
User mode .....	20
Processes to include in this configuration .....	20
Log file settings .....	22
Status file settings .....	23
Notes (optional) .....	23
User Profiles Tab .....	23
User profile settings .....	24
Converted/upgraded Profile Settings .....	26
Created Profile Settings .....	27
Option to save profile user password during configuration .....	27

User .psts Tab .....	27
General Settings for Personal Folder (.pst) Files .....	28
Exchange Profile Settings for .psts .....	29
IMAP/POP Profile Settings for .psts .....	29
Servers Tab .....	30
Settings .....	31
Mail Tab .....	31
Incoming Mail (IMAP) .....	31
Outgoing Mail (SMTP) .....	33
LDAP Tab .....	33
Calendar Tab .....	34
Settings .....	35
Address Book Tab .....	35
Single User Tab .....	36
<b>Chapter 3 Application Notes</b>	
<b>for Special Circumstances .....</b>	<b>37</b>
“Push” Method Deployment, If End Users Lack Installation Privileges .....	37
Step 1: Prepare the Necessary Shared Folders .....	38
Step 2: Prepare a Connector for Microsoft Outlook Installation Package to Install the Necessary Software .....	39
Step 3: Push the First Sun Java System Installation Package to User Desktops via an SMS Installation Package .....	40
Step 4: Prepare a Second Sun Java System Installation Package to Convert Existing Outlook Profiles and Data Files .....	43
Step 5: Push the Second Sun Java System Installation Package to User Desktops via an SMS Installation Package .....	43
Command-Line Switches for the User Installation Package .....	44
Migrating Terminal Service Users from Exchange to the Sun Java System .....	46
Step 1: Prepare the Server .....	46
Step 2: Create an Appropriate Desktop Installation Package .....	46
Step 3: Update the User’s Desktop .....	46
To Designate Microsoft Outlook as a User’s Default E-mail Client .....	47
To Remove a Sun Synchronization Program from a User’s Workstation .....	47
Undoing (Reversing) a User’s Migration .....	48
Recovering from a User’s Removal of LDAP Services from Outlook .....	49
<b>Glossary .....</b>	<b>51</b>
<b>Index .....</b>	<b>53</b>

# List of Figures

Figure 2-1	Deployment Configuration Program: Configuration Window	17
Figure 2-2	Deployment Configuration Program: Processes Tab	19
Figure 2-3	Deployment Configuration Program: User Profiles Tab	24
Figure 2-4	Deployment Configuration Program: User .psts Tab	28
Figure 2-5	Deployment Configuration Program: Servers Tab	30
Figure 2-6	Deployment Configuration Program: Mail Tab	32
Figure 2-7	Deployment Configuration Program: LDAP Tab	33
Figure 2-8	Deployment Configuration Program: Calendar Tab	34
Figure 2-9	Deployment Configuration Program: Address Book Tab	35
Figure 2-10	Deployment Configuration Program: Single User Tab	36
Figure 3-1	Permission Settings (left) and Properties (right) for the LOGS Shared Folder	39
Figure 3-2	SMS Distribute Software Wizard: Package Identification	40
Figure 3-3	SMS Distribute Software Wizard: Source Directory Screen	41
Figure 3-4	A User's Advertised Programs Monitor	42
Figure 3-5	A User's Countdown Dialog Box	42



# Preface

This guide describes the Deployment Configuration Program for the Sun Java™ System Connector for Microsoft Outlook.

## Who Should Use This Book

You should read this book if you are responsible for administering and deploying Sun Java System Connector for Microsoft Outlook at your site.

## Before You Read This Book

This book assumes that you are responsible for administering and deploying the Connector for Microsoft Outlook software and that you have a general understanding of the following:

- The Internet and the World Wide Web
- Messaging Server and Calendar Server protocols
- System Administration and Networking on the following platforms:
  - Microsoft Windows 2000
  - Microsoft Windows XP
- Microsoft Outlook
- General Deployment Architectures

## How This Book Is Organized

The following table summarizes the content of this book.

**Table 1** How This Book Is Organized

Chapter	Description
Chapter 1, “Getting Started”	Explains what the Sun Java System Connector software is designed to do, how it is typically used within the broader context of an overall migration scenario, and what an administrator should do to get started with the software — plus instructions for installing the administrator’s software on the administrator’s own computer.
Chapter 2, “Configuring End-User Packages”	Describes how to use the Deployment Configuration Program to create customized packages for Outlook end users. These packages can be configured to install the necessary software, or to convert existing Outlook and Exchange data files for use with the new Connector for Microsoft Outlook, or both—depending on your circumstances.
Chapter 3, “Application Notes for Special Circumstances”	Explains how to deploy the Sun Java System Connector for Microsoft Outlook under certain special circumstances or network configurations

## Conventions Used in This Book

The tables in this section describe the conventions used in this book.

### Typographic Conventions

The following table describes the typographic changes used in this book.

**Table 2** Typographic Conventions

Typeface	Meaning	Examples
AaBbCc123 (Monospace)	Any text that appears on the computer screen or text that you should type. Can be API and language elements, HTML tags, web site URLs, command names, file names, directory path names, onscreen computer output, sample code.	<p>Edit your <code>.login</code> file.</p> <p>Use <code>ls -a</code> to list all files.</p> <p>% You have mail.</p>



**Table 2** Typographic Conventions (*Continued*)

Typeface	Meaning	Examples
<b>AaBbCc123</b> (Monospace bold)	Text that you should type when it appears within a code example or other onscreen computer output.	% <b>su</b> Password:
<i>AaBbCc123</i> (Italic)	A placeholder in a command or path name that you should replace with a real name or value (for example, a variable).  Also can be a book title, new term, or word to be emphasized.	The file is located in the <i>install-dir/bin</i> directory.  Read Chapter 6 in the <i>User's Guide</i> .  These are called <i>class</i> options.  Do <i>not</i> save the file.

## Symbols

The following table describes the symbol conventions used in this book.

**Table 3** Symbol Conventions

Symbol	Description	Example	Meaning
[ ]	Contains optional command options.	ls [-l]	The -l option is not required.
{   }	Contains a set of choices for a required command option.	-d {y n}	The -d option requires that you use either the y argument or the n argument.
-	Joins simultaneous multiple keystrokes.	Control-A	Press the Control key while you press the A key.
+	Joins consecutive multiple keystrokes.	Ctrl+A+N	Press the Control key, release it, and then press the subsequent keys.
>	Indicates menu item selection in a graphical user interface.	File > New > Templates	From the File menu, choose New. From the New submenu, choose Templates.

## Related Documentation

The <http://docs.sun.com><sup>SM</sup> web site enables you to access Sun technical documentation online. You can browse the archive or search for a specific book title or subject.

## Books in This Documentation Set

The following table summarizes the books included in the Connector for Microsoft Outlook core documentation set.

**Table 4** Books in This Documentation Set

Book Title	Description
<i>Connector for Microsoft Outlook Deployment Planning Guide</i> ( <a href="http://docs.sun.com/doc/819-0028">http://docs.sun.com/doc/819-0028</a> )	Describes the administrator's process and strategies for deploying Connector for Microsoft Outlook to user desktops.
<i>Connector for Microsoft Outlook Installation Guide</i> ( <a href="http://docs.sun.com/doc/819-0029">http://docs.sun.com/doc/819-0029</a> )	Describes how to install the administration software that helps an administrator deploy Connector for Microsoft Outlook to user desktops.
<i>Connector for Microsoft Outlook Administration Guide</i> ( <a href="http://docs.sun.com/doc/819-0027">http://docs.sun.com/doc/819-0027</a> )	(This guide.) Describes the administrator's deployment configuration program for the Connector for Microsoft Outlook.
<i>Connector for Microsoft Outlook User's Guide</i> ( <a href="http://docs.sun.com/doc/819-0030">http://docs.sun.com/doc/819-0030</a> )	Explains how to install, use and configure the Connector for Microsoft Outlook on your desktop. This guide also describes the user interface.
<i>Connector for Microsoft Outlook Release Notes</i> ( <a href="http://docs.sun.com/doc/819-0031">http://docs.sun.com/doc/819-0031</a> )	Contains last-minute information, including a description of what is new in this current release, known problems and limitations, installation notes, and how to report issues with the software or the documentation.

## Other Server Documentation

For other server documentation, go to the following:

- **Messaging Server documentation**  
[http://docs.sun.com/coll/MessagingServer\\_05q1](http://docs.sun.com/coll/MessagingServer_05q1)
- **Calendar Server documentation**  
[http://docs.sun.com/coll/CalendarServer\\_05q1](http://docs.sun.com/coll/CalendarServer_05q1)

# Accessing Sun Resources Online

For product downloads, professional services, patches and support, and additional developer information, go to the following:

- Download Center  
<http://www.sun.com/software/download/>
- Professional Services  
<http://www.sun.com/service/sunps/sunone/index.html>
- Sun Enterprise Services, Solaris Patches, and Support  
<http://sunsolve.sun.com/>
- Developer Information  
<http://developers.sun.com/prodtech/index.html>

## Contacting Sun Technical Support

If you have technical questions about this product that are not answered in the product documentation, go to <http://www.sun.com/service/contacting>.

## Related Third-Party Web Site References

Sun is not responsible for the availability of third-party web sites mentioned in this document. Sun does not endorse and is not responsible or liable for any content, advertising, products, or other materials that are available on or through such sites or resources. Sun will not be responsible or liable for any actual or alleged damage or loss caused or alleged to be caused by or in connection with use of or reliance on any such content, goods, or services that are available on or through such sites or resources.

## Sun Welcomes Your Comments

Sun is interested in improving its documentation and welcomes your comments and suggestions.

To share your comments, go to <http://docs.sun.com> and click Send Comments. In the online form, provide the document title and part number. The part number is a seven-digit or nine-digit number that can be found on the title page of the book or at the top of the document. For example, the title of this book is *Sun Java System Connector for Microsoft Outlook 2005Q1 Administration Guide*, and the part number is 819-0027-10.

# Getting Started

## Introduction and Orientation

Your organization will use the Sun Java System Connector for Microsoft Outlook so that your users can use Microsoft Outlook as their e-mail and calendar client while connected to Sun Java System servers. This Connector software must be installed and configured on each user desktop to facilitate the necessary ongoing communications between Outlook and the Sun Java System server. The Connector for Microsoft Outlook software is installed one desktop at a time by a Setup Wizard that can also convert any existing Outlook data files to a format that the new software can read and use.

To simplify both the administrator's work associated with deployment and the user's tasks in actually installing and configuring the new software, Sun provides a Deployment Configuration Program. This tool lets the administrator create customized end-user installation packages for the software, with pre-set configuration parameters to simplify and streamline the user's process, and to enforce any configuration settings the administrator deems necessary or desirable for a particular user or group of users. The Deployment Configuration Program saves those pre-set configuration parameters in an `.ini` text file, and then bundles the `.ini` file with an installation program—the Setup Wizard—for end users. When an end user activates the package, the Setup Wizard reads the `.ini` file to install and configure the Connector software on the user's desktop according to the administrator's specifications.

A system administrator may create different installation packages for different individual users, or for different groups of end users—for example, to enforce different configuration schemes for users in the Sales department vs. the Engineering department and so forth, or to offer configuration options to some groups of users while setting fixed parameters (eliminating the choices) for others.

# Administrator's Process Overview

In a typical deployment scenario, an administrator will perform these four primary tasks to deploy the Sun Java System Connector for Microsoft Outlook:

- 1. Prepare a comprehensive Deployment Plan.** Planning and foresight are critical to a smooth deployment. The process of developing a comprehensive Deployment Plan is a valuable exercise that will lead you to consider and accommodate all of the factors likely to influence your organization's migration. The *Sun Java System Connector for Microsoft Outlook Deployment Planning Guide* explains important migration concepts, prerequisites, and strategic choices, and explains how to develop a Deployment Plan that will guide you through your migration. Every administrator should therefore read the *Deployment Planning Guide* and prepare a comprehensive Deployment Plan.
- 2. Install the Sun Java System Connector for Microsoft Outlook software.** Sun's administrative software obviously must reside on the administrator's computer before it can be used to create end-user installation packages. The installation instructions can be found in the *Sun Java System Connector for Microsoft Outlook Installation Guide*.
- 3. Configure end-user package.** [Chapter 2, "Configuring End-User Packages"](#) explains how to use the Deployment Configuration Program to create customized packages for Outlook end users. These packages can be configured to install the necessary software on user desktops, or to convert users' existing Outlook and Exchange data files for use with the new software—or both, depending on your circumstances.
- 4. Deploy each end-user package.** Once you have created an installation package for your users, you must tell them where to find it and how to use it. Many administrators simply copy the package and the associated *Sun Java System Connector for Microsoft Outlook User's Guide* to a shared folder, and then provide links to the installation package and documentation in an announcement e-mail to users.

[Step 1](#) and [Step 2](#) of this process overview are a good place to start regardless of your unique configuration and preferences. If your migration strategy calls for two or more different installation packages for different users or user groups, simply repeat [Step 3](#) and [Step 4](#) for each package until all users have been migrated.

The deployment process can proceed along different paths depending on your original and destination network configurations, the administrative structure of your organization, and your own informed sense of the extent to which your users should be involved in the process of installing and configuring their own desktop

software. Moreover, your network configuration or preferences may dictate some variation to the standard scenario described above. [Chapter 3, “Application Notes for Special Circumstances”](#) provides application notes for the most common of these variations.





# Configuring End-User Packages

If the most recent version of the Administrator's software is not yet installed on your computer, see the *Sun Java System Connector for Microsoft Outlook Installation Guide*. The Administrator's software must be properly installed on your computer before you can run the Deployment Configuration Program.

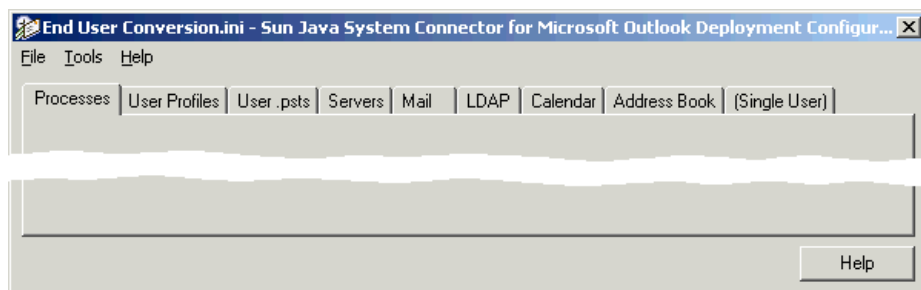
Follow these instructions to create a single desktop installation package for a single user, or for a particular group of users who will all install and configure the Connector for Microsoft Outlook in the same way. To create multiple desktop installation packages with a variety of configuration settings for different groups of users, simply repeat this procedure for each package you want to create.

To create an end-user desktop installation package:

1. Locate and launch (double-click) the file `Admin.exe`, in `C:\Program Files\Sun\Deployment Configuration Program\`, or from a desktop shortcut icon or from the **Start** program menu.

The Deployment Configuration Program then opens its Configuration Window on your desktop, as shown in [Figure 2-1](#).

**Figure 2-1** Deployment Configuration Program: Configuration Window



The Configuration Window contains:

- nine tabbed panels where you will enter the information to characterize an end user's configuration of the Sun Java System Connector (described separately below).
- a **Help** button, which opens a separate window of information about the entry options available on the currently displayed panel.
- three menus: File, Tools and Help.

The **File Menu** offers several standard, familiar Windows features for file management: New, Open..., Save, Save As..., Print Setup..., Print..., and Exit.

The **Help Menu** offers context-sensitive access to the online Help system that accompanies this Deployment Configuration Program.

The **Tools Menu** offers a **Create Package** feature that lets you create a new installation package for an existing `.ini` configuration file that has been opened into this Configuration Window. You may use **File > Open...** to locate and open an existing `.ini` file.

2. Complete the information in the nine tabbed panels, as described separately (per tab) below. Click on each tab to display the associated panel.

If you begin creating an installation package but then decide to finish it at a later time, you may **File > Save** a partially completed package, and then **File > Open...** it later to resume and complete your work.

3. When you have entered all of the information requested in all nine tabbed panels, select **File > Save** to save your configuration choices in an `.ini` file and create a new installation package. Your **Save** command activates a standard, familiar Windows Save dialog box.
4. In the dialog box: Enter an appropriate path and filename for the `.ini` file and `.exe` file, and click the **Save** button.

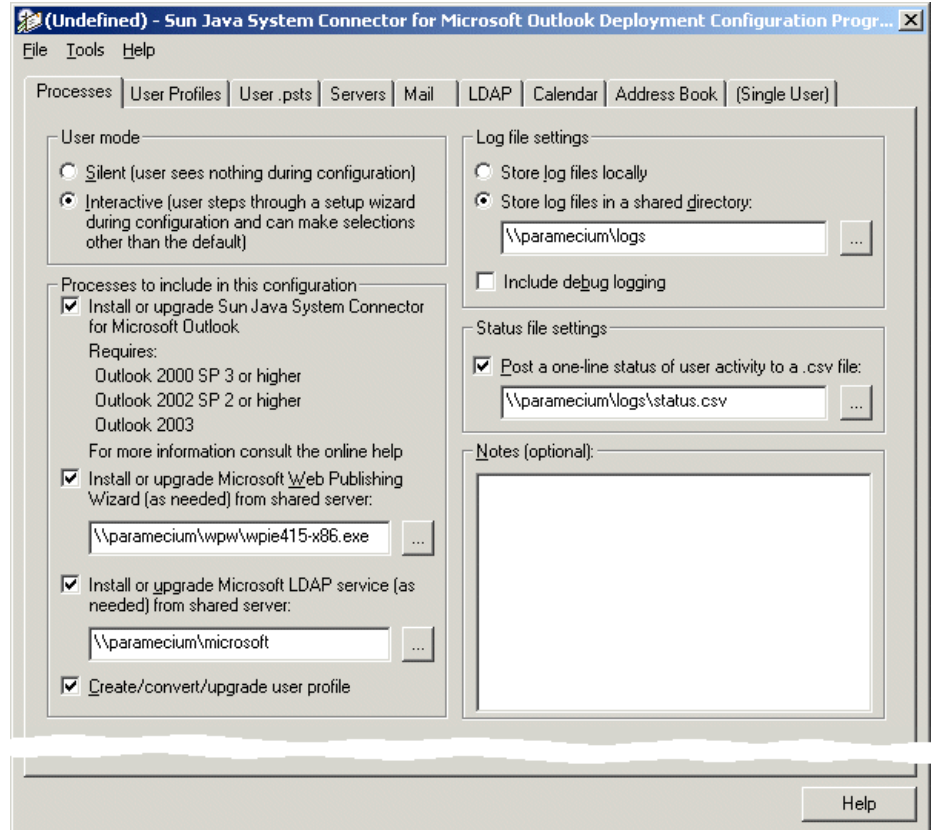
The **Save** command actually creates two new files: the `.ini` file, which is saved to whatever folder you designate in the Save dialog box, and an `.exe` file (the bundled installation package, including a copy of the `.ini` file), which is saved by default to `C:\Program Files\Sun\Deployment Configuration Program\Packages`. Both the `.ini` and `.exe` files carry whatever filename you designate in the Save dialog box.

**If the program reports a Logon failure or “Could not locate...” a necessary resource while it is running.** If you know that the resource exists in the location you have specified, then the administrator account you are using to run this Deployment Configuration Program is not authenticated to the file server where the resource resides. Make sure that you are logged in to the locations of all such resources and then run the Deployment Configuration Program again.

## Processes Tab

The Processes tabbed panel is shown in [Figure 2-2](#).

**Figure 2-2** Deployment Configuration Program: Processes Tab



## User mode

These two options, **Silent** installation vs. **Interactive**, are mutually exclusive:

**Silent:** The user program will install and configure the user's software, and convert the existing default Exchange user profile and existing Personal Folders (.pst) files, without any user involvement whatsoever, according to the administrator's pre-set parameters for this process (as set in this and the other tabs in this Deployment Configuration Program).

**Interactive:** The user program will present the user with at least some choices for the installation, configuration and conversion processes. The extent of user involvement will be as determined by the administrator (as set in this and the other tabs in this Deployment Configuration Program).

## Processes to include in this configuration

The installation of these software components to user desktops will require access privileges that often are disallowed to many or most end users. If your network serves "locked-down" Windows environments where end users cannot install software, we strongly recommend a "push" method for software distribution from the system administrator to user desktops that bypasses the requirement for user access privileges. This "push" method of distribution is explained in [Chapter 3 "Push" Method Deployment, If End Users Lack Installation Privileges.](#)

For a full explanation of any or all of the processes offered in this panel, and the implications of installing or not installing them, please see "Deployment Toolkit Components" in chapter 1 of the *Deployment Planning Guide*.

**Install or upgrade Sun Java System Connector for Microsoft Outlook.** Tells the program to install the software that facilitates the necessary ongoing communications between the user's Outlook client application and the Sun Java System server. If Sun Java System Connector for Microsoft Outlook is already installed, the user program will check the installed version and, if appropriate, upgrade to the newer version.

System requirements for the Sun Java System Connector for Microsoft Outlook include:

- Operating System Windows 2000 (Service Pack 3 or higher) or Windows XP (Service Pack 1 or higher).
- Outlook 2003, or Outlook 2002 with Office XP Service Pack 2 or higher, or Outlook 2000 with Office 2000 Service Pack 3 or higher

- Microsoft Outlook must be designated as the user's default e-mail client. If Outlook is not set as a user's default e-mail client, see [“To Designate Microsoft Outlook as a User's Default E-mail Client”](#) in [Chapter 3](#) for instructions to resolve this problem.
- The software cannot be installed to any workstation that also contains the Sun Java System Synchronization program (previously known as the Sun ONE Sync program), which is incompatible with Connector for Microsoft Outlook. If the Sun synchronization program has been installed on a particular user's desktop, it must be removed (see [“To Remove a Sun Synchronization Program from a User's Workstation”](#), in [Chapter 3](#) for instructions).

The Sun Java System Connector for Microsoft Outlook Setup Wizard will detect any discrepancy between these requirements and the actual installation environment, and in that case will not install Sun Java System Connector for Microsoft Outlook.

**Install or upgrade Microsoft Web Publishing Wizard.** Tells the user program to install Microsoft's Web Publishing Wizard (WPW), which makes the user's Free/Busy information available to the Sun Java System Calendar Server. If WPW is already installed, the user program will check the installed version and, if appropriate, upgrade to the newer version. If you mark this checkbox, you must also specify the network location of the installation kit for the Web Publishing Wizard.

**Install or upgrade Microsoft LDAP Service.** Tells the user program to install the LDAP component of Outlook 2000, which will facilitate communications between Connector for Microsoft Outlook and the Sun Java System directory. If the LDAP component is already installed, the user program will check the installed version and, if appropriate, upgrade to the newer version. If you mark this checkbox, you must also specify the network location of the installation files for the version of Outlook 2000 used by these users.

Installation of the LDAP component here will be necessary *only* if some of your users are using Outlook 2000, and *not* if all users are running Outlook 2002 or Outlook 2003. Connector for Microsoft Outlook uses LDAP services to communicate with the Sun Java System directory, and the LDAP protocol is a standard feature of Outlook 2002 and Outlook 2003. The LDAP protocol is only an optional feature in Outlook 2000, not a part of a “standard” Microsoft Office installation. If *any* of your users are using Outlook 2000 you will need the corresponding original Microsoft installation CD(s) or files to install the LDAP component. These kits are *not* included in the Desktop Deployment Toolkit package because they are Microsoft products. For more information, see “Deployment Toolkit Components” in the *Deployment Planning Guide*.

---

**NOTE** If the Browse feature for LDAP does not display the location you need to specify (but you know that it exists), chances are you simply are not authenticated in the domain to which you have browsed. To correct this problem, right-click the target computer and select Explore, and then enter your administrator userID and password at the prompt. You may then return to the Browse feature and select the computer you need to browse.

---

**Create/convert/upgrade user profile.** Activates the User Profiles tabbed panel, so the user program can convert an existing eligible Outlook user profile or create a new profile for use with the new Sun Java System Connector. The user program will convert only an “eligible” profile, meaning that the profile must:

- include message services of at least one type designated in the User Profiles tabbed panel (in the Converted/upgraded Profile Settings section), and
- not have been fully converted (all of its .pst files converted) by a previous run of the user program (although the remaining, unconverted .pst files of a partially converted profile can be converted).

If this box is *not* marked, the entire User Profiles tabbed panel will be grayed out and unavailable, and no user profile will be converted or created. For example, you may want to create a user installation package to simply install or update MAPI services without converting or creating any profiles.

## Log file settings

These settings pertain to the directory where the user program will write its log files for the user’s migration session. The first two radio-button options are mutually exclusive:

- **Store log files locally:** Tells the user program to write its log files to the user’s local “temp” directory.
- **Store log files in a shared directory:** Tells the user program to write its log files to a particular shared directory, which you must specify in the accompanying text box. Use the Browse (“...”) button to locate and specify the path, or just type it into the text box. You can enter a drive letter or a UNC path.

*If the Browse feature for Log files does not display the location you need to specify (but you know that it exists):* This is an unlikely scenario, but chances are you simply are not authenticated in the domain to which you have browsed. To correct this problem, right-click the target computer and select Explore, and then enter your administrator userID and password at the prompt. You may then return to the Browse feature and select the computer you need to browse.

- **Include debug logging:** Tells the user program to log its activities in the more verbose, more explicit “debug” style. If a user encounters a problem with the installation package and you can’t diagnose the problem by reviewing the default-style log entries, the more verbose debug-style logging may provide enough additional information to help you or your associates solve the problem. This option is off by default.

## Status file settings

**Post a one-line status of user activity to a .csv file:** Adds a one-line summary of user activity to the .csv file you specify in the accompanying text box (below). Each line represents one run of the desktop tool by one user. A single user who runs the tool multiple times should generate multiple lines in the .csv file.

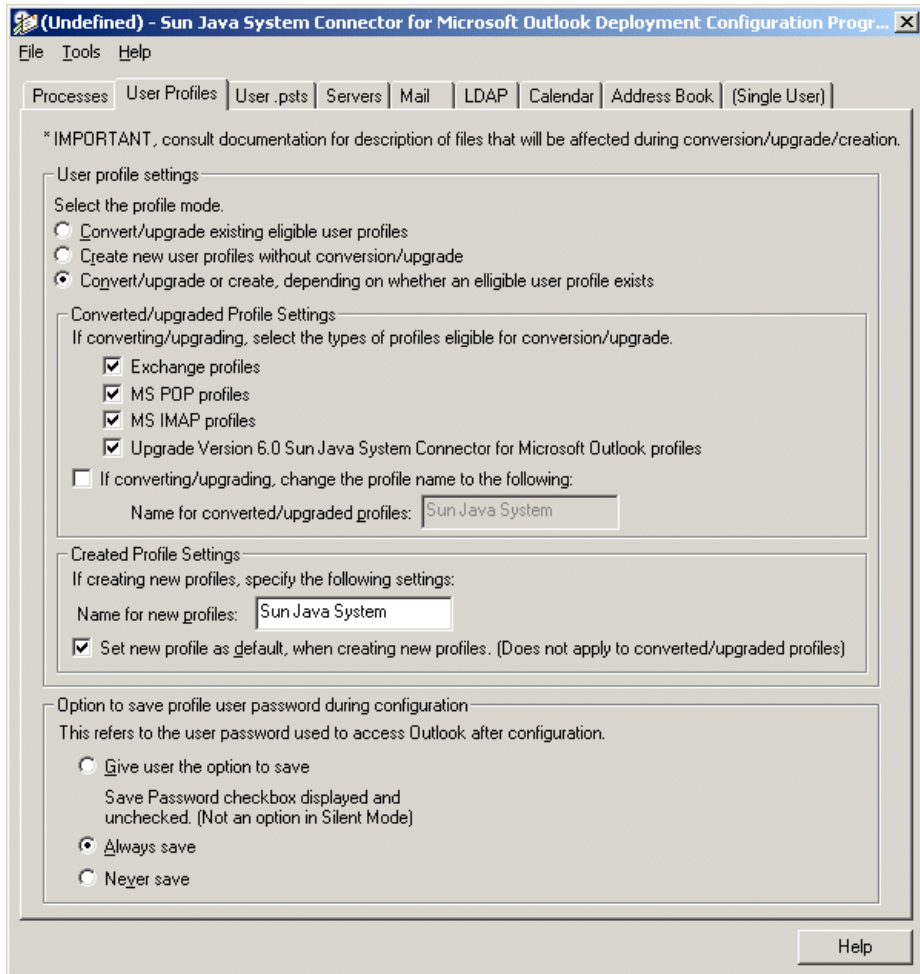
If you mark this checkbox, you must also specify the shared file to which the status lines will be written. Use the Browse (“...”) button to locate and specify the path, or just type it into the text box. If the file already exists, it will be updated each time the installation kit is run.

## Notes (optional)

Any notes or comments you care to include about this configuration can be entered into this field.

# User Profiles Tab

The settings in this User Profiles panel, shown in [Figure 2-3](#), apply only if this package will create or convert user profiles. Therefore, the features in this panel are available only if the **Create/convert user profile** option is checked on the Processes tabbed panel. This entire User Profiles panel will be grayed out if the **Create/convert/upgrade user profile** option is unmarked.

**Figure 2-3** Deployment Configuration Program: User Profiles Tab

The settings in this panel determine how Exchange users' Contacts, Journal and Notes data will be converted to local (desktop) Sun Java System Connector Personal Folders (.pst) files.

## User profile settings

Mark options in this section to specify whether and how user profiles will be converted and created:



- **Convert/upgrade existing eligible user profiles:** Tells the user program to convert an existing Outlook profile, as follows:
  - **In Silent Mode:** Converts the user's default profile if it can be found, or does nothing if a default profile cannot be found.
  - **In Interactive Mode:** Prompts the user to select a single profile to convert if it finds two or more eligible profiles connecting to Exchange server(s), or finds only one eligible profile that is not set as the user's default. If the program finds only one eligible profile, and it is set as the user's default, the program automatically converts that profile without any user interaction. If the program finds no eligible profiles, it does nothing — neither converts nor creates any user profile.

Remember that the user program will convert only an “eligible” profile, meaning that the profile:

- must include message services of at least one type designated in the Converted/upgraded Profile Settings section of this screen (below), and
  - must not have been fully converted (all of its .pst files converted) by a previous run of the user program (although the remaining, unconverted .pst files of a partially converted profile can be converted).
- **Create new user profiles without conversion/upgrade:** Tells the user program to create a new Outlook user profile, ignoring any existing profiles that may already exist for the user. It will create only one new profile for a given user, even if the user runs the installation two or more times.
  - **Convert/upgrade or create:** Tells the user program to convert an existing Outlook user profile if it can find one, or create a new profile if it cannot find an existing one:
    - **In Silent Mode:** Converts the user's default Outlook profile if it can be found, or creates a new profile if a default profile cannot be found.
    - **In Interactive Mode:** Prompts the user to select a single profile to convert if it finds two or more eligible profiles connecting to Exchange server(s), or finds only one eligible profile that is not set as the user's default. If the program finds only one eligible profile, and it is set as the user's default, the program automatically converts that profile without any user interaction. If the program finds no eligible profiles, it creates a new one.

## Converted/upgraded Profile Settings

**Special Note for Version Upgrade:** For any users running this package who are upgrading from Sun Java System Connector version 6 to version 7, the user program will ignore any server-parameter changes that may be entered on the Servers panel — except for the Address Book Server, since it is new in version 7. The program will, however, apply any server-parameter changes to any of the other types of converted profiles. If you want to change any server parameters for users who are upgrading, you should create a separate package for those users and set it to **Create new user profiles ...** (under **User profile settings** above).

- **If converting/upgrading, select the types of profiles eligible for conversion/upgrade:** Checkmark the box(es) that correspond to the profile type(s) that the user program should consider “eligible” for conversion. Remember that an “eligible” profile:
  - must include message services of at least one type designated here, and
  - must not have been fully converted (all of its .pst files converted) by a previous run of the user program (although the remaining, unconverted .pst files of a partially converted profile can be converted).

Note that different types of data associated with different profile types are migrated differently, as shown in [Table 2-1](#) below.

**Table 2-1** Destinations of Migrated Data from Various Sources

— Migrating From —

	Exchange	MS POP	MS IMAP	SJSC 6
Mail	Not Migrated (server data)	SJOC-local.pst	SJOC-local.pst	Not Migrated (server data)
Contacts	Addr Bk Server	Addr Bk Server	Addr Bk Server	Addr Bk Server
Calendar	Not Migrated (server data)	Calendar Server	Calendar Server	Not Migrated (server data)
Tasks	Not Migrated (server data)	Calendar Server	Calendar Server	Not Migrated (server data)
Sticky Notes	SJOC.pst	SJOC.pst	SJOC.pst	SJOC.pst
Journals	SJOC.pst	SJOC.pst	SJOC.pst	SJOC.pst

- **If converting/upgrading, change the profile name to the following:** The name by which the converted profile will be identified in the drop-down list box that appears on Outlook’s user logon screen.

## Created Profile Settings

These options apply *only* to new profiles that the user program will create, and not to converted or upgraded profiles.

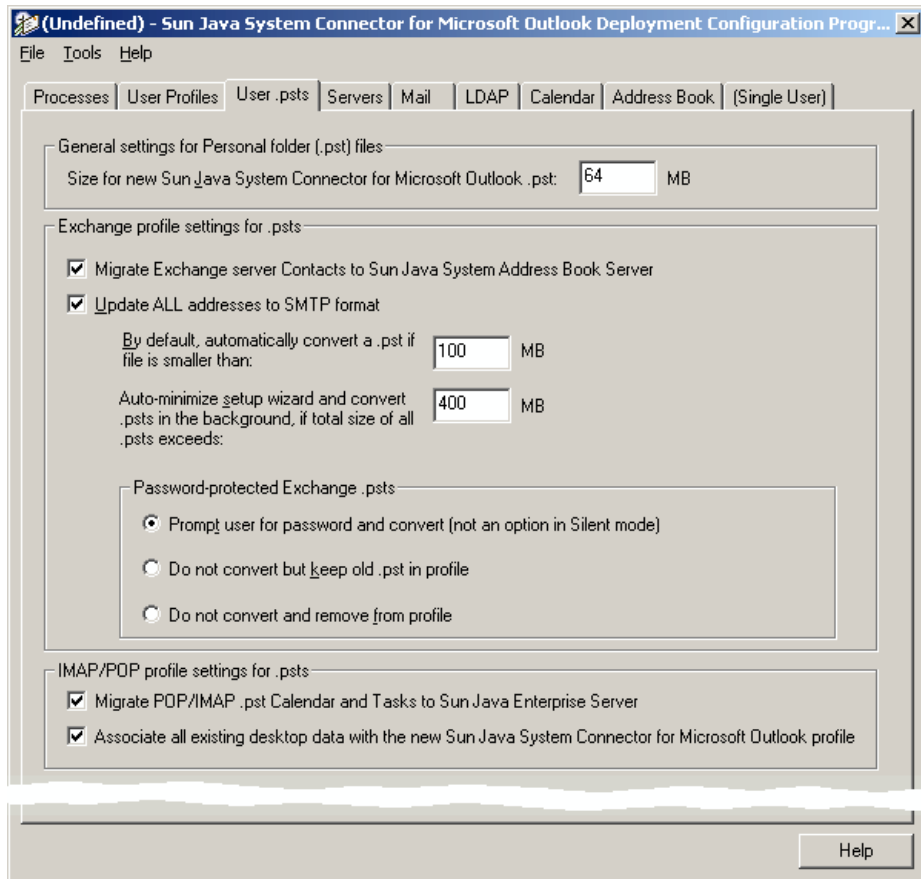
- **Name for new profiles:** The name by which the new profile will be identified in the drop-down list box that appears on Outlook’s user logon screen.
- **Set new profile as default:** If this box is checked, the new profile will be set as the user’s default Outlook profile.

## Option to save profile user password during configuration

- **Give user the option to save:** Tells the user program to display a checkbox that lets the user choose whether Outlook should prompt the user for a password upon each login, or save (“remember”) the password so the user can skip that login step. Within the user program, the instructions displayed with the checkbox explain: “If checked, you will not need to enter your information each time you launch Outlook.” This option is not available in any user package configured to run in *Silent* mode.
- **Always save:** Tells the user program to *not* offer the user the choice described above (for **Give user the option...**). Instead, the screen will display this message: “Your password will be saved. You will not need to enter your password each time you launch Outlook.”
- **Never save:** Tells the user program to *not* offer the password choice, and to configure Outlook to always prompt for the user’s password, by default. The user program will display no checkbox or related explanatory text.

## User .psts Tab

The settings in this User .psts panel, shown in [Figure 2-4](#), define how the program will save users’ Personal Folders (.pst) files. Depending on your choices in other panels in this program, certain sections of this screen may not apply and may appear grayed-out (unavailable) in the display.

**Figure 2-4** Deployment Configuration Program: User .psts Tab

## General Settings for Personal Folder (.pst) Files

**Size for new Sun Java System Connector ... .pst: \_\_\_\_ MB:** The expected amount of disk space required for the new .pst file into which selected items from the old Exchange server are copied. The user program aborts the conversion if a user does not have this much disk space available. Leave this value set at its default unless you have some particular reason to expect that your .psts will be larger.

## Exchange Profile Settings for .psts

**Migrate Exchange server Contacts to Sun Java System Address Book Server:** Tells the user program to migrate the user's Exchange Contacts and copy them to the Sun Java System Address Book Server. If this option is unmarked, no Exchange Contacts will be migrated.

**Update ALL addresses to SMTP format:** Tells the user program to convert all addresses that occur within Personal Folders (.pst) files to SMTP (Internet standard) format.

**By default, automatically convert a .pst if file is smaller than: \_\_\_\_ MB:** In *Silent* mode: The user program will ignore (not convert) any .pst files larger than or equal to the size specified here. In *Interactive* mode: If any existing .pst files are larger than or equal to the specified size, the program will prompt the user to specify which (if any) of the large files to convert.

**Auto-minimize setup wizard and convert .psts in the background, if total size of all .psts exceeds: \_\_\_\_ MB:** This setting is irrelevant in *Silent* mode. In the *Interactive* mode, if the total size of all .pst files to be converted exceeds the size specified here, the user program will convert the profiles first, and then automatically minimize itself to the user's Task Bar to convert the .pst files as a background process. Once the profile has been converted, the user can run Outlook and access the converted profile.

**Password-protected Exchange .psts:** Choose one of these mutually exclusive options for converting password-protected .pst files:

- **Prompt user for password and convert (not an option in Silent mode):** Tells the user program to prompt the user for the password to open each .pst file and convert it.
- **Do not convert but keep old .pst in profile:** Tells the user program to *not* convert the .pst file, but to keep the unconverted .pst file in the profile.
- **Do not convert and remove from profile:** Tells the user program to *not* convert the .pst file, and to remove the unconverted .pst file from the profile. (The old .pst file is not, however, physically deleted from the user's hard drive.)

## IMAP/POP Profile Settings for .psts

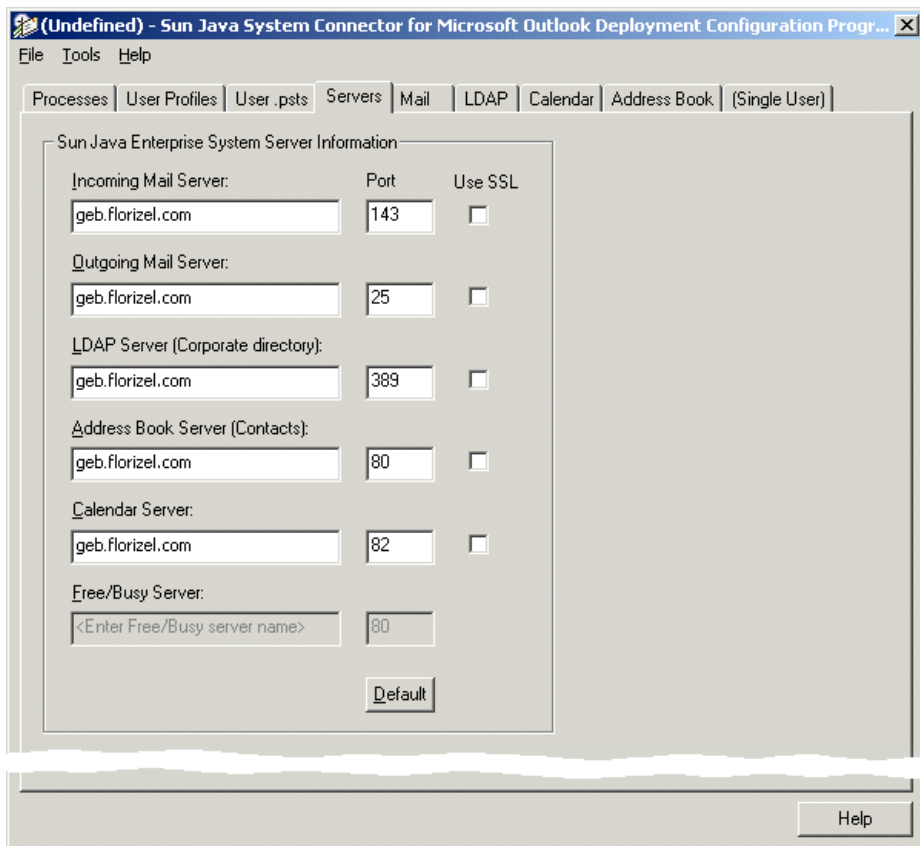
**Migrate POP/IMAP .pst Calendar and Tasks to Sun Java Enterprise Server:** Tells the user program to migrate the user's POP/IMAP calendar data and tasks to the Sun Java Enterprise Server. If this option is unmarked, no calendar data or tasks will be migrated.

**Associate all existing desktop data with the new Sun Java System Connector for Microsoft Outlook profile:** Tells the user program to associate the user's existing POP/IMAP desktop data with the new Sun Java System profile.

## Servers Tab

The Servers tabbed panel is shown in [Figure 2-5](#).

**Figure 2-5** Deployment Configuration Program: Servers Tab



## Settings

**Server Name:** The host name for each Sun Java System server: Incoming Mail, Outgoing Mail, LDAP, Address Book, Calendar, and Free/Busy.

**Port:** The default port number for each server. The default changes if you use SSL to connect to the server.

**Use SSL:** Mark this box to require an SSL to connect to the associated server.

---

**NOTE** If the **Use SSL** box is not marked for the Calendar server, the Free/Busy server values will be the same as for the Calendar, and the Free/Busy line will therefore be grayed out in this panel. But if **Use SSL** is marked for the Calendar, then you must specify a different port for Free/Busy.

---

**Default:** Restores all Port numbers back to their original default values (if you have changed the values but now want to restore the defaults). The default values for SSL vs. non-SSL are different, and this feature will restore the appropriate default for any given server depending on whether the **Use SSL** box is marked.

## Mail Tab

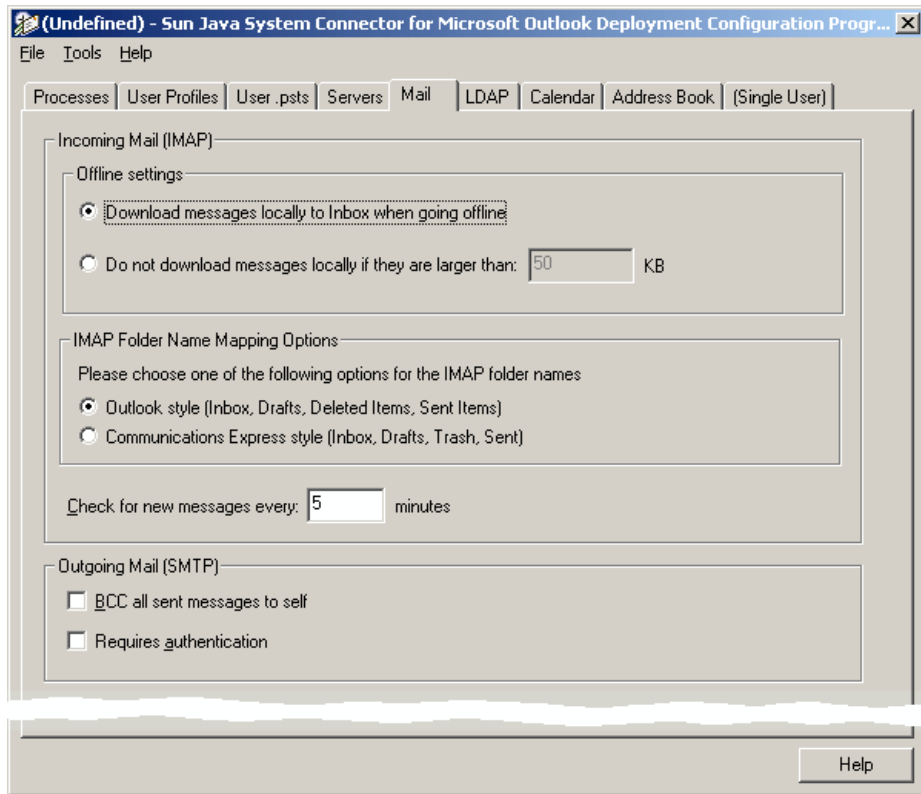
The Mail tabbed panel is shown in [Figure 2-6](#).

### Incoming Mail (IMAP)

**Offline settings** (two options, mutually exclusive):

- **Download messages locally to Inbox when going offline:** Configures IMAPSP to download messages to the user's Inbox when the user goes offline. Alternatively, the user can set the caching status of a given mailbox by highlighting the folder entry in Outlook, then executing the Properties menu, pressing the IMAPSP tab, and turning on the **Cache all message parts (attachments) for this folder** option.

**Figure 2-6** Deployment Configuration Program: Mail Tab



- Do not download messages locally if they are larger than: \_\_\_ KB:** The per-message size limit for the IMAPSP local message cache. This option is intended primarily to reduce download times when the user goes into offline operations. This value, however, will also affect re-display times in online mode, because the message will have to be re-retrieved if it hasn't been cached.

**Check for new messages every: \_\_\_ minutes:** This is the interval, in minutes, after which a server mailbox will be polled for newly arrived messages. If any new messages have arrived, the mailbox is refreshed and redisplayed in Outlook. If this field is cleared or set to zero, no polling will be done for this server connection.

**IMAP Folder Name Mapping Options:** Select either **Outlook style** or **Communications Express style** to indicate which of these two standards the user program should use to name users' IMAP folders. Your selection here determines which of two map files, `outlook_folders.map` or `uwc_folders.map`, will be used to



map users' IMAP folder names. An administrator may, before running this program, edit these files to suit local requirements, as long as the original filenames remain the same.

## Outgoing Mail (SMTP)

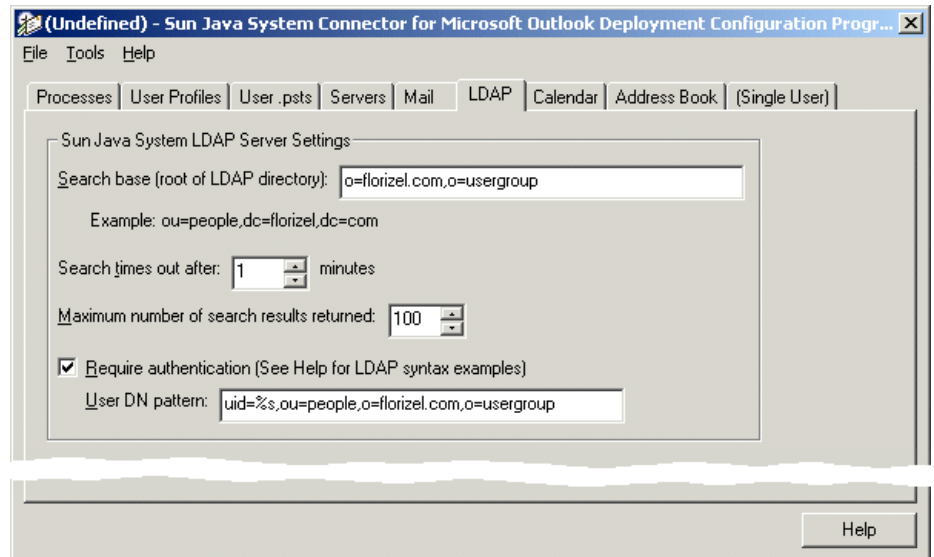
**BCC all sent messages to self:** Configures the user software to automatically insert the user's e-mail address into the BCC field of every outbound message (effectively lets a sender file a copy of every message sent). The messages are filed within a sender's server INBOX, and subsequently will be affected by any server-based message filtering rules.

**Requires authentication:** Tells the user software to configure the SMTP Service so as to require user authentication for outbound SMTP mail.

## LDAP Tab

This LDAP tabbed panel, shown in [Figure 2-7](#), lets you specify the settings for the Sun Java System LDAP Directory Service.

**Figure 2-7** Deployment Configuration Program: LDAP Tab



**Search base (root of LDAP directory):** The LDAP distinguished name of the root of your LDAP directory.

**Search times out after: \_\_\_ minutes:** Limits directory search times to the designated number of minutes.

**Maximum number of search results returned:** Limits the number of entries returned by a search to the number specified here.

**Require authentication:** Tells the user program to configure the LDAP Directory Service so as to require user authentication in the form of a user Distinguished Name (DN) for each directory query.

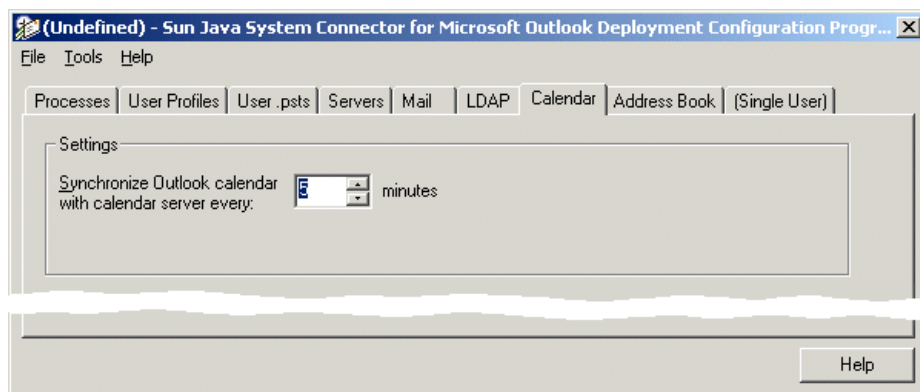
- **User DN pattern:** The elements of the user's Distinguished Name that, when assembled, will form the complete DN to authenticate the user's identity to the LDAP Directory Service (if authentication is required). For example, to define a DN consisting of a user ID (uid), an organization unit (ou) and an organization (o): `uid=%S,ou=people,o=florizel.com`.

Similarly, to define a DN consisting of a common name, an organization and a country: `cn=Fred Smith,o=florizel.com,c=US`.

## Calendar Tab

The Calendar panel is shown in [Figure 2-8](#).

**Figure 2-8** Deployment Configuration Program: Calendar Tab



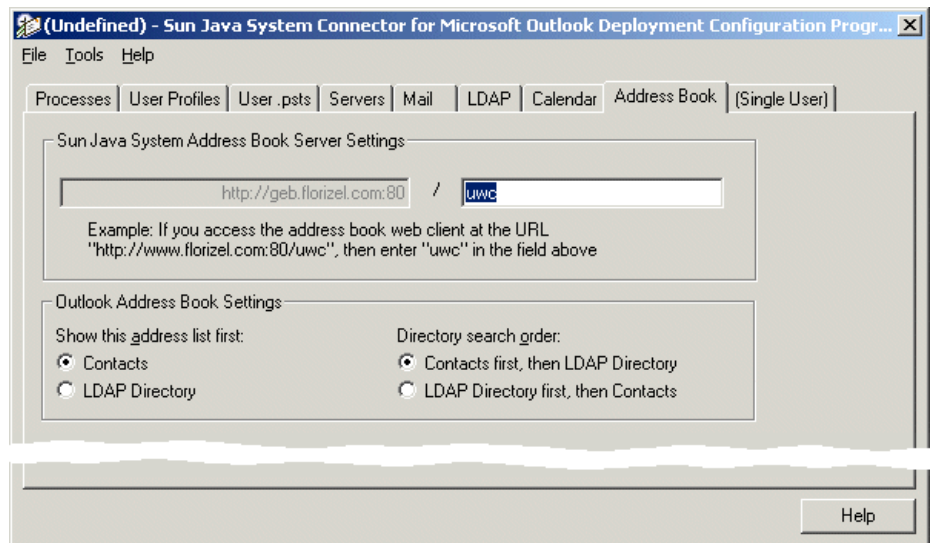
## Settings

**Synchronize Outlook calendar with calendar server every: \_\_\_ minutes:** Specifies how often the Outlook calendar will synchronize with the calendar server.

## Address Book Tab

The Address Book panel is shown in [Figure 2-9](#).

**Figure 2-9** Deployment Configuration Program: Address Book Tab



**Sun Java System Address Book Server Settings:** Enter the portion of the address book web client URL that follows the domain root and a delimiting slash character. The root value appears in the grayed-out text box to the left of this value, drawn from your **Calendar Server** entry on the Servers panel.

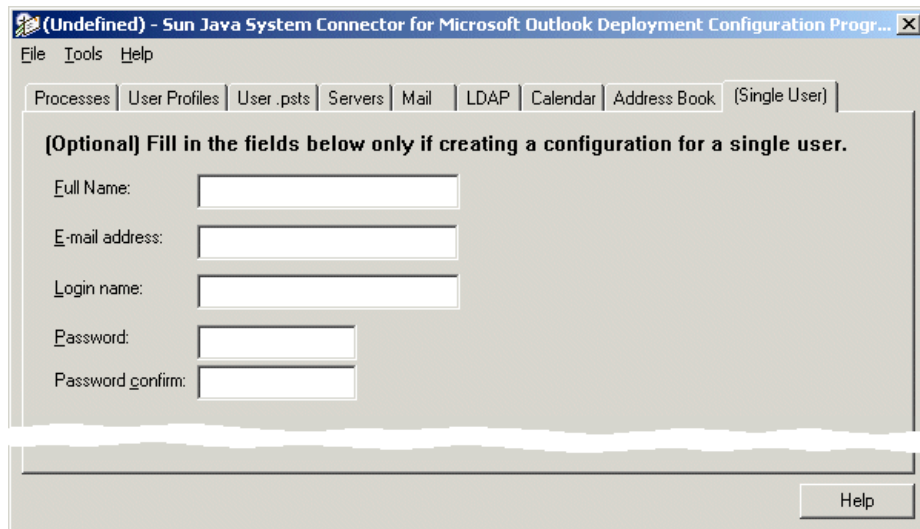
### Outlook Address Book Settings:

- **Show this address list first:** Select **Contacts** or **LDAP Directory** (mutually exclusive) to indicate which of these two should appear first in the user's Outlook Address Book.
- **Directory search order:** Select **Contacts first ...** or **LDAP Directory first ...** (mutually exclusive) to indicate how Directory searches should proceed.

# Single User Tab

The Single User tabbed panel, shown in [Figure 2-10](#), lets you specify and authenticate the identity of a single specific user. This panel applies *only* if you are creating an installation kit for one particular user — e.g., for your CEO, or for some other user whose unique circumstances warrant a more customized configuration.

**Figure 2-10** Deployment Configuration Program: Single User Tab



**Full name:** The “friendly” name associated with the user's e-mail address. When sending messages, this name appears in the From box of the user's outgoing messages.

**E-mail address:** Specifies the e-mail address that people should use when sending mail to the user at this account — must be in the format `name@florizel.com`.

**Login name:** Specifies the user's account name, which must be the same value for both the IMAP and calendar servers. This is often the same as the part of the user's e-mail address to the left of the “at” sign (@).

**Password:** The user's account password, which must be a single shared password used for both the IMAP and calendar servers.

**Password confirm:** A duplicate field for the user's account password, required as a precaution against typographical errors. (This value must match the **Password** value above.)

## Application Notes for Special Circumstances

### “Push” Method Deployment, If End Users Lack Installation Privileges

The Deployment Configuration Program lets an administrator create installation packages that end users can run to install and configure their own local desktop copies of the Connector for Microsoft Outlook software. Software installation, however, requires access privileges that often are disallowed to many or most end users. Most enterprises therefore implement a “push” method for software distribution from the system administrator to user desktops that bypasses the requirement for user access privileges. If your network serves “locked-down” Windows environments where end users cannot install software, we strongly recommend this sort of automated configuration management as a way to avoid many individual desktop visits.

This section describes a “push” method for distributing the Sun Java System Connector for Microsoft Outlook to user desktops using Microsoft’s SMS administration tools. Remember that the Deployment Configuration program can prepare desktop installation packages that both install the Connector for Microsoft Outlook software and convert existing Outlook profiles and data files for use with the new software. If your users had sufficient administrator privileges to install new software on their own desktops, you could prepare a single installation package that would perform both the installation and conversion functions in a single pass. But if the user who runs the installation package lacks the administrator privileges to install software, then the installation portion of the package would be unable to run and the conversion would fail.

When users cannot install their own software, we have to separate those two tasks so that the installation function can be facilitated separately by an SMS installation package. The SMS installation package can then be run on each user desktop by a local SMS account that has full administrator rights, and is therefore authorized to

install new software on the local desktop. After the necessary software for the Connector for Microsoft Outlook has been installed, we use the Deployment Configuration Program to prepare a second installation package to convert any existing Outlook profiles and data files for use with the new Connector for Microsoft Outlook.

The conversion functions will convert any existing Outlook profiles and data files associated with the specific user who is running the desktop installation program. But the SMS account that will run the first installation package is a generic account, with administrator privileges so that it can install software, but not associated with any particular user. The installation tasks and conversion tasks must therefore be performed by two separate installation packages, because the generic SMS account necessary to physically install the software lacks the user specificity necessary to convert a user's existing profile and data files.

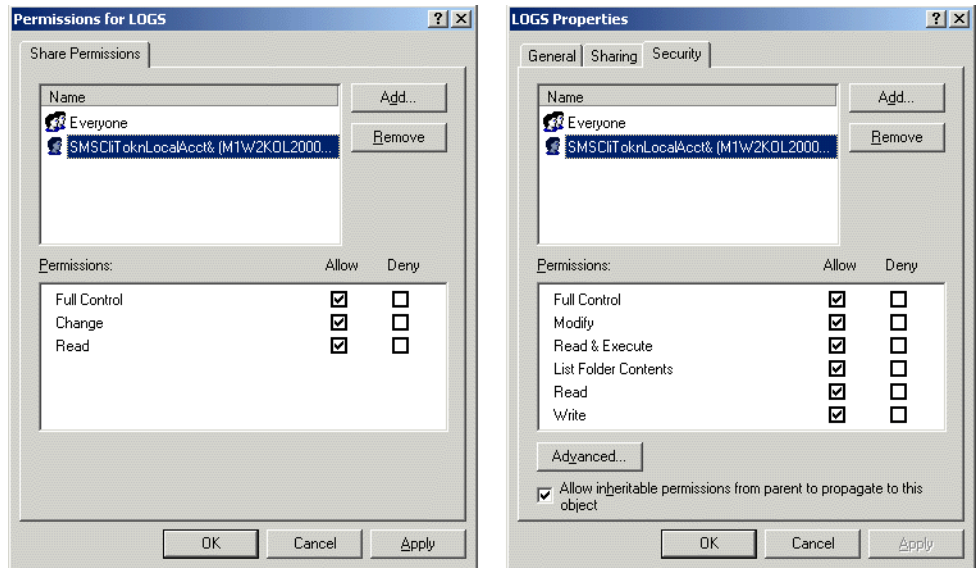
A typical SMS "push" scenario consists of the five steps detailed below:

## Step 1: Prepare the Necessary Shared Folders

Create four new shared directories, named LDAP, LOGS, SJSC, and WPW, on a computer that is part of the same SMS site as the end-user desktops. The nature of Windows NT local accounts requires that you assign full control share permissions for all four folders for the SMScliToknLocalAcct\$ account, as shown in the Permissions window (left) in [Figure 3-1](#) below.

These assignments will provide the necessary read/write access to these directories for the SMS local account (which requires a password), and lets you avoid having to open the system to guest access. Also, assign full control permissions for all four of the NTFS folders to SMScliToknLocalAcct\$, as shown for the LOGS folder in the Properties window (right) in [Figure 3-1](#).

**Figure 3-1** Permission Settings (left) and Properties (right) for the LOGS Shared Folder



## Step 2: Prepare a Connector for Microsoft Outlook Installation Package to Install the Necessary Software

Use the Sun Java System Connector Deployment Configuration program (`Admin.exe`) to create an installation package that will *only* install the necessary software to each user's desktop, but *not* convert existing Outlook profiles and data files. The `Admin.exe` program is described in [Chapter 2](#) ("Configuring End-User Packages") above, but note these special requirements, on the Processes tab, for preparing this package for SMS distribution:

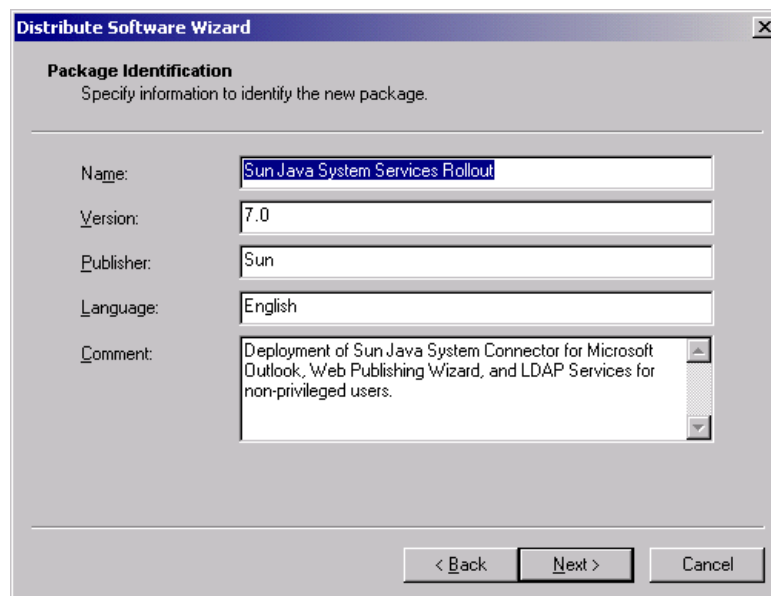
- Be sure the **User mode** is set to **Silent**.
- Be sure to *uncheck* the option to **Create/convert/upgrade user profile**.
- Use UNC paths (`\\servername\sharename`) for all four of the path fields.

## Step 3: Push the First Sun Java System Installation Package to User Desktops via an SMS Installation Package

Use Microsoft's SMS Packaging Wizard to prepare an installation package that will contain the Sun Java System Connector installation package you created in step 2, and then "push" the package to run automatically on user desktops — without any user initiative or interaction.

1. Launch the SMS 2.0 Management console. Right-click on the collection to which you want to push the Connector for Microsoft Outlook, and click **Distribute Software**. SMS then launches its Distribute Software Wizard.
2. On the Distribute Software Wizard's Welcome screen: Click **Next** to begin.
3. On the Package screen: Click the option to **Create a new package and program**, and click **Next**.
4. On the Package Identification screen: Enter the appropriate values as shown in [Figure 3-2](#), and click **Next**.

**Figure 3-2** SMS Distribute Software Wizard: Package Identification

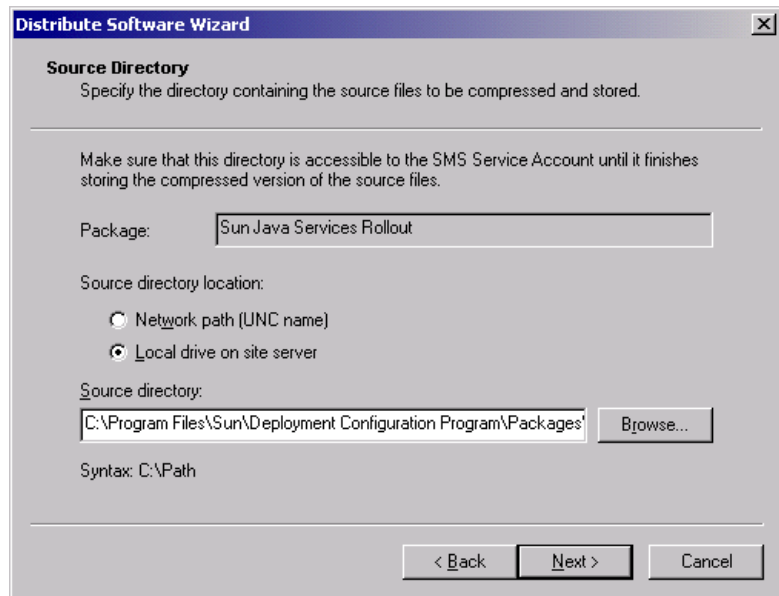


The screenshot shows the 'Distribute Software Wizard' dialog box, specifically the 'Package Identification' step. The title bar reads 'Distribute Software Wizard' with a close button. Below the title bar, the text 'Package Identification' is displayed, followed by the instruction 'Specify information to identify the new package.' The form contains five input fields: 'Name' with the value 'Sun Java System Services Rollout', 'Version' with '7.0', 'Publisher' with 'Sun', 'Language' with 'English', and 'Comment' with a multi-line text area containing 'Deployment of Sun Java System Connector for Microsoft Outlook, Web Publishing Wizard, and LDAP Services for non-privileged users.' At the bottom of the dialog are three buttons: '< Back', 'Next >', and 'Cancel'.



5. On the Source Files screen: Select **Create a compressed version of this source**, and click **Next**.
6. On the Source Directory screen: Click the **Browse** button to locate and specify the directory where the Connector for Microsoft Outlook installation package was created, as shown in [Figure 3-3](#). The path specification can be either local or UNC. When you have specified the correct path, click **Next**.

**Figure 3-3** SMS Distribute Software Wizard: Source Directory Screen

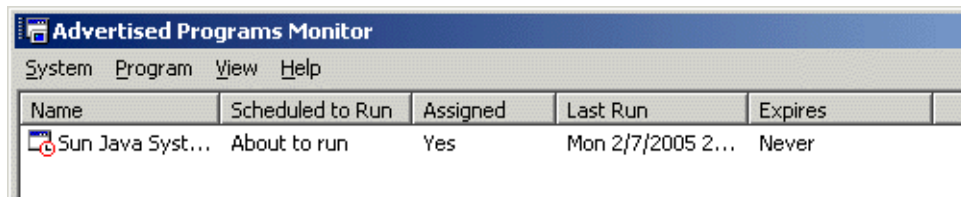


7. On the Program Identification screen: Click the **Browse** button to locate and specify the name of the program .exe file for the **Command line**, and click **Next**.
8. On the Program Properties screen: Make sure the program will **Run with administrative rights**, and click **Next**.
9. Specify whether and how you want to advertise the program on the next five screens, titled: Advertise a Program, Advertisement Target, Advertisement Name, Advertise to Sub collections, and Advertisement Schedule. As you enter your choices, click **Next** to advance to each next screen.
10. On the Assign Program screen: Select **Yes** to assign the program, specify the date and time of assignment, and click **Next**.

11. On the Completing... screen: Review your settings for the creation of this installation package. You may use the **Back** button to go back and change any settings now, before you actually create the package. When the settings appear as you want them, click **Finish** to create the package, which will then be pushed to user desktops according to the Assignment and other parameters you have specified in this Wizard.

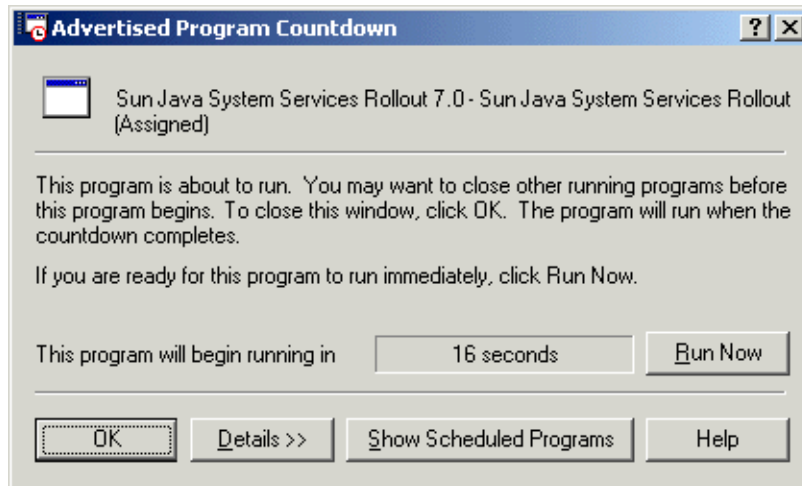
A user's Advertised Programs Monitor will report the package as shown in [Figure 3-4](#).

**Figure 3-4** A User's Advertised Programs Monitor



In any case, every user will be alerted to the imminent run of the package by a Countdown dialog box, as shown in [Figure 3-5](#).

**Figure 3-5** A User's Countdown Dialog Box



Because the desktop installation program (`desktop.exe`) will be run by the SMS administrator program, as a local user, access to network shares will require a password, even if the shares are made available to the group "everyone." If the network denies access to log directories and install directories during a user run of the installation package, enable guest access on the computer hosting the log files and installation media, to allow the local account from one system to access the data from another system.

## Step 4: Prepare a Second Sun Java System Installation Package to Convert Existing Outlook Profiles and Data Files

Use the Sun Java System Deployment Configuration program (`Admin.exe`) to create a second installation package for the Connector for Microsoft Outlook — this time to *only* convert any existing Outlook profiles and data files for use with the new Connector for Microsoft Outlook software. The `Admin.exe` program is described in [Chapter 2](#) ("[Configuring End-User Packages](#)") above, but note these special requirements in the Processes tab for preparing this package:

- Set the **User mode** to **Interactive**.
- Under **Processes to include in this configuration**:
  - Be sure that *none* of the **Install or upgrade...** options is marked.
  - Mark the **Create/convert/upgrade user profile** option.

## Step 5: Push the Second Sun Java System Installation Package to User Desktops via an SMS Installation Package

Use Microsoft's SMS Packaging Wizard to prepare another SMS installation package—this one to contain the Sun Java System installation package you created in step 4. Use the same settings you used in step 3 above to prepare the first SMS installation package, except for these differences on the Program Properties screen:

- **Program can run**: Select the option **Only when a user is logged on**.
- Mark the **User input required** option, and be sure that **Run with administrative rights** is *unmarked*.

This final SMS package will require some user interaction, to reply to password prompts, but will not require administrator privileges since this package does not install any new software to the desktop. The passwords will authorize the conversion program's access to password-protected Outlook Personal Folders (.pst) files.

Alternatively, this step 5 can be accomplished by running the installation package from the command line, with an SMS script, as explained below under [“Command-Line Switches for the User Installation Package.”](#)

## Command-Line Switches for the User Installation Package

Step 5 of the “push” method described above (see [““Push” Method Deployment, If End Users Lack Installation Privileges”](#)) can also be accomplished by running the installation package from an SMS script, with command-line switches to pass the necessary user passwords to the conversion program as it runs. This would make possible a truly silent installation and configuration, requiring no user interaction whatsoever.

For example, you might create an SMS package that runs a conversion package, and have the SMS services issue the following commands when it is run:

```
DT_Package.exe
  /USERNAME=bcarpenter
  /PASSWORD=password
  /FULLNAME="Burns Carpenter"
  /EMAILADDRESS="burns.carpenter@florizel.com"
  /DN="uid=bcarpenter,ou=people,o=florizel.com,o=florizel.com"
```

---

**NOTE** This and other command-line samples are formatted here for ease of reading, but all of the switches must be typed in one continuous string — which is likely to wrap to multiple lines of its own accord.

---

You could then substitute environment variables for the users (assuming that the NT usernames and the iPlanet usernames match):

```
DT_Package.exe
  /USERNAME=%username%
  /PASSWORD=password
  /FULLNAME="Change This"
  /EMAILADDRESS=%username%@florizel.com
  /DN=uid=%username%,ou=people,o=florizel.com,o=florizel.com
```

This command-line approach would permit a silent (or minimally interactive) installation from SMS, which would probably generate far fewer Help desk calls than asking users to click a link in an e-mail and requiring users to enter data.

The installation package will support these command-line switches:

- /USERNAME=**xxx**, where **xxx** is the username on the Sun servers.
- /PASSWORD=**xxx**, where **xxx** is the password on the Sun servers.
- /FULLNAME=**xxx**, where **xxx** is the display name of the user.
- /EMAILADDRESS=**xxx**, where **xxx** is the email address of the user.
- /DN=**xxx**, where **xxx** is the user DN on the Sun servers.
- /NEWPROFILENAME=**xxx**, where **xxx** is the name of the created profile.
- /SAVEPASSWORD=**n**, where **n** = 1 (save) or 0 (don't save).

These switches will be useful if you are converting an Exchange profile:

- /OLDDOMAIN=**xxx**, where **xxx** is the Exchange domain
- /OLDUSERNAME=**xxx**, where **xxx** is the Exchange user name
- /OLDPASSWORD=**xxx**, where **xxx** is the Exchange password

# Migrating Terminal Service Users from Exchange to the Sun Java System

The Connector for Microsoft Outlook administrator's tools can also be used to migrate existing Outlook users of Windows terminal service from Exchange to a Sun Java System server. The method described below assumes the following environment:

- Windows 2000 Server with Terminal Services.
- Office 2000 installed with Terminal Services install file from Office 2000 Resource Kit CD (ORK) onto the Windows server.
- Outlook 2000 configured as the default mail client.

## Step 1: Prepare the Server

Log onto the server's local console as an administrator, and configure Outlook to be the default mail client (if it is not already). Then install Web Publishing Wizard and the Connector for Microsoft Outlook. You will not need to install the LDAP services, because they are installed by default when using the Office 2000 Resource Kit install file.

## Step 2: Create an Appropriate Desktop Installation Package

Use the Deployment Configuration Program to create a desktop package that does *not* install any services, but simply converts profiles from Exchange to Sun Java System services. (If the user has been in a non-Exchange environment, there will be no profile to convert, so you must configure the desktop package to create a new Sun Java System profile instead.)

## Step 3: Update the User's Desktop

Log on to a terminal session as a regular user, and run the desktop installation package that you created in step 2 above — that only converts or creates a user profile, but does not attempt to install or update any services. Then open Outlook and verify that the conversion is complete.

## To Designate Microsoft Outlook as a User's Default E-mail Client

Sun Java System Connector for Microsoft Outlook can be installed only at workstations where Microsoft Outlook is set to be the default e-mail client. If Outlook is *not* set as a user's default e-mail client, the Setup Wizard will not install the software, and will prompt the user to correct the problem and run the Setup Wizard again.

To designate Microsoft Outlook as a user's default e-mail client (when logged in as the user, at his or her desktop):

1. Open the Windows Control Panel. If you are running Windows XP (only): Select "Switch to Classic View."
2. Double-click on Internet Options.
3. Select the Programs tab from the Internet Properties window.
4. Select Microsoft Outlook from the E-mail pull-down menu.
5. Click OK.

## To Remove a Sun Synchronization Program from a User's Workstation

The MAPI services for the Connector for Microsoft Outlook are a required component of the Connector installation, but cannot coexist with the Sun Java System Synchronization program (previously known as the Sun ONE Sync program). If one of these Sun synchronization programs is installed on a user's workstation, the Setup Wizard will notify the user of the problem (in an error message after the Welcome screen), and prompt him or her to acknowledge the notice and exit the program. The user may then rerun the Setup Wizard after the synchronization program has been removed.

To remove the synchronization program from a user's workstation (when logged in as the user, at his or her desktop):

1. From the Start menu: Select the **Uninstall...** option for the program you want to uninstall — either:
  - o **Programs > Sun Java System Synchronization > Uninstall Sun Java System Synchronization**, or

- **Programs > Sun ONE Synchronization > Uninstall Sun ONE Synchronization.**
2. In the Uninstallation window: Follow the prompts to uninstall the software.
  3. Click Finish to complete the uninstallation process.

To synchronize a Palm device, WinCE device or Pocket PC device with Outlook, we strongly recommend that users use the sync software distributed with their devices, rather than the Sun synchronization software. Changing to the sync software distributed with a device may require uninstalling and reinstalling the Palm Desktop software.

If a user wants to continue using the Sun synchronization software to sync to the data of the other device, he or she can reinstall the software, but *not* select the checkbox for the Microsoft Outlook 98/2000 translator during the installation.

## Undoing (Reversing) a User's Migration

To abandon a user's connection to the new Sun Java System server and restore the user's mailbox to service with the old Exchange server:

1. Delete the profile "Xxx (old)."
2. Copy the profile "Xxx" to "Xxx Sun"— or some other name, like "Xxx (new)," etc.
3. Delete the profile "Xxx."
4. Copy the profile "Xxx (Backup)" to "Xxx."
5. Delete the profile "Xxx (Backup)."
6. Determine where the .pst's are located by viewing Properties on the profile.

There is no standard location for .pst files, so the only reliable way to find them is to open the profile (now named "Xxx") and, for each .pst service, click on Properties and note the path.

7. For each pst file: Rename Yyy.pst to Yyy.new, and rename Yyy.bak to Yyy.pst.
8. Determine where the .pab's are located by viewing Properties on the profile.

There is no standard location for .pab files, so the only reliable way to find them is to open the profile (now named "Xxx") and, for each .pab service, click on Properties and note the path.



9. For each `pab` file: Rename `Zzz.pab` to `Zzz.new`, and rename `Zzz.bak` to `Zzz.pab`.

The `Yyy.bak` and `Zzz.bak` files will be in the same directory.

To remove the Sun Java System profile and leave the Exchange profile resident on the system, skip step 2 (and combine steps 1 and 3).

## Recovering from a User's Removal of LDAP Services from Outlook

If an end user manually removes LDAP services from Outlook 2000, the removal process deletes and alters critical DLL and configuration files in ways that cannot be "repaired" by simply reinstalling Outlook in its Repair mode. The *only* way to restore LDAP services in such a case is to completely uninstall Outlook, and then reinstall Outlook from scratch.



# Glossary

Refer to the Java Enterprise System Glossary (<http://docs.sun.com/doc/816-6873>) for a complete list of terms that are used in this documentation set.



# Index

## A

Address Book tab [35](#)  
administrator role in deployment [14](#)  
administrator's software [13, 17](#)  
administrator's software, installing [14](#)

## C

Calendar tab [34](#)  
command-line switches for user installation program [44](#)  
Configuration Window (of Deployment Configuration Program) [17](#)  
conversion of user data [13, 20, 22, 25, 37](#)  
Create/convert user profile [23](#)  
Create/convert/upgrade user profile [22](#)

## D

Deployment Configuration Program [8, 13, 14, 17, 37](#)  
Deployment Plan, developing [14](#)  
Deployment Planning Guide [14, 20, 21](#)  
documentation [7](#)  
    overview [10](#)

## E

Exchange Contacts, converting [24](#)  
Exchange Journal, converting [24](#)  
Exchange Notes, converting [24](#)  
exe file, in desktop installation package [18](#)

## F

File menu [18](#)  
free/busy schedule [21](#)

## H

Help menu [18](#)

## I

ini file, in desktop installation package [13, 18](#)  
Install or Upgrade various services [20](#)  
installation of admin software [8](#)  
Interactive mode installation [20](#)

## L

LDAP services [21, 33](#)  
LDAP tab [33](#)  
log files [22](#)

## M

Mail Tab [31](#)  
Microsoft Web Publishing Wizard [21](#)

## O

Outlook user password [27](#)  
Outlook user profiles, converting [22, 25](#)

## P

Personal Folders (.pst) files [24, 27](#)  
Personal Folders (.pst) files, "large" vs. "small" [29](#)  
Personal Folders (.pst) files, passwords for [29](#)  
port numbers, server [31](#)  
Processes tab [19, 39](#)  
Processes to include in this configuration [20](#)  
push method of software deployment [20, 37](#)

## S

Servers tab [30](#)  
Setup Wizard [13, 21](#)  
Silent mode installation [20](#)  
Single User tab [36](#)  
software for end users [13, 20](#)  
Solaris  
    patches [11](#)  
    support [11](#)

SSL [31](#)  
status .csv file (status of user activity) [23](#)  
Sun Java System Synchronization program,  
    incompatibility with software [21, 47](#)  
support  
    Solaris [11](#)  
system requirements [20](#)

## T

tabbed panels (in Configuration Window) [18](#)  
terminal service users, migrating [46](#)  
Tools menu [18](#)

## U

user installation package [13, 18, 20, 37](#)  
user installation package, creating [17](#)  
user installation package, deploying [14](#)  
user installation package, opening previously  
    saved [18](#)  
user installation package, running [23](#)  
user installation package, saving [18](#)  
user installation privileges [20, 37](#)  
User Profiles tab [22, 23](#)  
User's Guide [14](#)