



Solaris 8 User Supplement

Sun Microsystems, Inc.
901 San Antonio Road
Palo Alto, CA 94303-4900
U.S.A.

Part Number 806-5181-10
October 2000

Copyright 2000 Sun Microsystems, Inc. 901 San Antonio Road, Palo Alto, California 94303-4900 U.S.A. All rights reserved.

This product or document is protected by copyright and distributed under licenses restricting its use, copying, distribution, and decompilation. No part of this product or document may be reproduced in any form by any means without prior written authorization of Sun and its licensors, if any. Third-party software, including font technology, is copyrighted and licensed from Sun suppliers.

Parts of the product may be derived from Berkeley BSD systems, licensed from the University of California. UNIX is a registered trademark in the U.S. and other countries, exclusively licensed through X/Open Company, Ltd.

Sun, Sun Microsystems, the Sun logo, docs.sun.com, AnswerBook, AnswerBook2, and Solaris are trademarks, registered trademarks, or service marks of Sun Microsystems, Inc. in the U.S. and other countries. All SPARC trademarks are used under license and are trademarks or registered trademarks of SPARC International, Inc. in the U.S. and other countries. Products bearing SPARC trademarks are based upon an architecture developed by Sun Microsystems, Inc.

The OPEN LOOK and Sun™ Graphical User Interface was developed by Sun Microsystems, Inc. for its users and licensees. Sun acknowledges the pioneering efforts of Xerox in researching and developing the concept of visual or graphical user interfaces for the computer industry. Sun holds a non-exclusive license from Xerox to the Xerox Graphical User Interface, which license also covers Sun's licensees who implement OPEN LOOK GUIs and otherwise comply with Sun's written license agreements.

Federal Acquisitions: Commercial Software—Government Users Subject to Standard License Terms and Conditions.

DOCUMENTATION IS PROVIDED "AS IS" AND ALL EXPRESS OR IMPLIED CONDITIONS, REPRESENTATIONS AND WARRANTIES, INCLUDING ANY IMPLIED WARRANTY OF MERCHANTABILITY, FITNESS FOR A PARTICULAR PURPOSE OR NON-INFRINGEMENT, ARE DISCLAIMED, EXCEPT TO THE EXTENT THAT SUCH DISCLAIMERS ARE HELD TO BE LEGALLY INVALID.

Copyright 2000 Sun Microsystems, Inc. 901 San Antonio Road, Palo Alto, Californie 94303-4900 Etats-Unis. Tous droits réservés.

Ce produit ou document est protégé par un copyright et distribué avec des licences qui en restreignent l'utilisation, la copie, la distribution, et la décompilation. Aucune partie de ce produit ou document ne peut être reproduite sous aucune forme, par quelque moyen que ce soit, sans l'autorisation préalable et écrite de Sun et de ses bailleurs de licence, s'il y en a. Le logiciel détenu par des tiers, et qui comprend la technologie relative aux polices de caractères, est protégé par un copyright et licencié par des fournisseurs de Sun.

Des parties de ce produit pourront être dérivées du système Berkeley BSD licenciés par l'Université de Californie. UNIX est une marque déposée aux Etats-Unis et dans d'autres pays et licenciée exclusivement par X/Open Company, Ltd.

Sun, Sun Microsystems, le logo Sun, docs.sun.com, AnswerBook, AnswerBook2, et Solaris sont des marques de fabrique ou des marques déposées, ou marques de service, de Sun Microsystems, Inc. aux Etats-Unis et dans d'autres pays. Toutes les marques SPARC sont utilisées sous licence et sont des marques de fabrique ou des marques déposées de SPARC International, Inc. aux Etats-Unis et dans d'autres pays. Les produits portant les marques SPARC sont basés sur une architecture développée par Sun Microsystems, Inc.

L'interface d'utilisation graphique OPEN LOOK et Sun™ a été développée par Sun Microsystems, Inc. pour ses utilisateurs et licenciés. Sun reconnaît les efforts de pionniers de Xerox pour la recherche et le développement du concept des interfaces d'utilisation visuelle ou graphique pour l'industrie de l'informatique. Sun détient une licence non exclusive de Xerox sur l'interface d'utilisation graphique Xerox, cette licence couvrant également les licenciés de Sun qui mettent en place l'interface d'utilisation graphique OPEN LOOK et qui en outre se conforment aux licences écrites de Sun.

CETTE PUBLICATION EST FOURNIE "EN L'ETAT" ET AUCUNE GARANTIE, EXPRESSE OU IMPLICITE, N'EST ACCORDEE, Y COMPRIS DES GARANTIES CONCERNANT LA VALEUR MARCHANDE, L'APTITUDE DE LA PUBLICATION A REpondre A UNE UTILISATION PARTICULIERE, OU LE FAIT QU'ELLE NE SOIT PAS CONTREFAISANTE DE PRODUIT DE TIERS. CE DENI DE GARANTIE NE S'APPLIQUERAIT PAS, DANS LA MESURE OU IL SERAIT TENU JURIDIQUEMENT NUL ET NON AVENU.



Contents

- Preface 5**
- 1. What's New at a Glance 9**
- 2. Removable Media 11**
 - Using Removable Media Manager 11
 - Starting Removable Media Manager 11
 - Supported Media Classes 12
 - Viewing Additional Information About a Device 12
 - ▼ To Change the Viewing Option 12
 - Properties 13
 - ▼ To View the Properties of a Device 13
 - Formatting and Slicing Devices 14
 - ▼ To Format a Device 14
 - Creating Solaris Slices 15
 - ▼ To Use AutoSlice 15
 - ▼ To Use Slice Details 15
 - Protecting a Device 16
 - ▼ To View a Device's Protection 16
 - ▼ To Disable Protection 16
 - ▼ To Enable Write Protection Without a Password 17

▼ To Enable Write Protection With a Password 17

▼ To Read-Write Protect With a Password 17

Changing Your Password 18

▼ To Change Your Password 18

3. Managing Windows 19

Graphical Workspace Manager 19

Window List 22

Preface

The *Solaris 8 User Supplement* describes new or changed functionality in Solaris™ Update releases. The information here supplements or supersedes information in the previous releases of Solaris 8 documentation sets. Solaris documentation is available on the Solaris 8 Documentation CD included in this release.

Note - The Solaris operating environment runs on two types of hardware, or platforms - SPARC™ and IA (Intel Architecture). The Solaris operating environment also runs on both 64-bit and 32-bit address spaces. The information in this document pertains to both platforms and address spaces unless called out in a special chapter, section, note, bullet, figure, table, example, or code example.

Ordering Sun Documents

Fatbrain.com, an Internet professional bookstore, stocks select product documentation from Sun Microsystems, Inc.

For a list of documents and how to order them, visit the Sun Documentation Center on Fatbrain.com at <http://www1.fatbrain.com/documentation/sun>.

Accessing Sun Documentation Online

The docs.sun.comSM Web site enables you to access Sun technical documentation online. You can browse the docs.sun.com archive or search for a specific book title or subject. The URL is <http://docs.sun.com>.

Typographic Conventions

The following table describes the typographic changes used in this book.

TABLE P-1 Typographic Conventions

Typeface or Symbol	Meaning	Example
AaBbCc123	The names of commands, files, and directories; on-screen computer output	Edit your <code>.login</code> file. Use <code>ls -a</code> to list all files. <code>machine_name% you have mail.</code>
AaBbCc123	What you type, contrasted with on-screen computer output	<code>machine_name% su</code> <code>Password:</code>
<i>AaBbCc123</i>	Command-line placeholder: replace with a real name or value	To delete a file, type <code>rm filename</code> .
<i>AaBbCc123</i>	Book titles, new words, or terms, or words to be emphasized.	Read Chapter 6 in <i>User's Guide</i> . These are called <i>class</i> options. You must be <i>root</i> to do this.

Shell Prompts in Command Examples

The following table shows the default system prompt and superuser prompt for the C shell, Bourne shell, and Korn shell.

TABLE P-2 Shell Prompts

Shell	Prompt
C shell prompt	machine_name%
C shell superuser prompt	machine_name#
Bourne shell and Korn shell prompt	\$
Bourne shell and Korn shell superuser prompt	#

What's New at a Glance

This chapter highlights new features added to the Solaris 8 operating environment for the Update release.

TABLE 1-1 Solaris 8 Features

Feature Description	First Released in . . .
Removable Media	
Removable Media Manager centralizes access to removable devices in one window. Users can format, query properties, view directory structures, and where applicable, protect and slice media.	6/00 and updated 10/00
Window Management	
Graphical Workspace Manager provides a graphical representation of all workspaces, the ability to navigate across different workspaces with the press of a button, and the ability to drag and drop applications across different workspaces.	6/00
Window List GUI provides a list of all current running GUI applications. The Window List GUI enables the user, with the click of a mouse button, to locate any GUI application, even those in workspaces other than the current workspace. It also provides the ability to perform window actions on a selected group of applications.	6/00
Energy Star Standards	
X11R6.4 standards have been enhanced with Frame Buffer Power Management (FBPM), an extension to the Display Power Management System (DPMS). This enhancement is added to fulfill the U.S. government's Energy Star program requirements and only works on Energy Star compliant hardware.	6/00

TABLE 1-1 Solaris 8 Features *(continued)*

Feature Description	First Released in . . .
Early Access	
This release includes an Early Access (EA) directory with EA software. For more information, see the Readme on the Solaris Software CD 2 of 2.	6/00

Removable Media

Using Removable Media Manager

This functionality was updated in the Solaris 8 6/00 and updated again in the 10/00 software release.

Use Removable Media Manager to format, protect, and view data on removable media devices such as diskettes, CD-ROM, DVD-ROM, Iomega Zip, and Iomega Jaz devices.

Starting Removable Media Manager

To open the Removable Media Manager:

- In File Manager, choose Removable Media Manager from the File menu.
- From the Front Panel, click the Removable Media Manager icon in the Files subpanel.
- From the Workspace menu, choose Removable Media Manager in the Folders menu.

When Removable Media Manager starts, it displays all media currently loaded into the drives. The different forms of devices are represented by icons and is unlimited. For example, if a machine has three drives loaded with diskettes, three diskette icons are displayed. The icon view updates each time a device is inserted or ejected. Each class of media is represented by a different icon.

You can select one or more devices and perform operations on them. A device is displayed with a nickname (`cdrom0`), an optional volume name (`ssa_2_1_sparc`), and an optional partition or slice number (`s1`).

Note - In order to have the Removable Media Manager recognize a diskette, you must choose Open Floppy from one of the following:

- File subpanel of the Front Panel
 - File menu of the File Manager
 - Folders menu of the Workspace Menu
-

Supported Media Classes

Removable Media Manager supports the following devices:

- Diskette
- CD-ROM
- DVD-ROM
- Iomega Zip drive
- Iomega Jaz drive
- Rmdisk (generic call includes Syquest devices)

Viewing Additional Information About a Device

To display additional information about a device, you must change the viewing option.

▼ To Change the Viewing Option

1. **In the Removable Media Manager window, click a device icon.**
2. **From the View menu, choose Set View Options.**
3. **In the Representation section, select By Name, date, size....**
4. **Click Apply to view the effect of the selection.**
5. **Click OK.**

Note - If the device has no name, it is shown as . . unnamed.

In verbose mode, Removable Media Manager shows the following for each media object:

- Volume name
- Media nickname or alias
- Media partition or slice number
- Total storage capacity
- Mount point UNIX® permissions
- Mount point owner name
- Mount point group name
- Mount point path
- Mount point date

Properties

The Properties dialog box displays the properties and capacity capabilities of a device. You can display two property categories using the Properties dialog box:

- Information – Shows the alias, product ID, write protect, and password protection status. Also displayed are the file system, mount point, and total capacity.
- Floating Capacities – Shows the used and available capacities for a device.

▼ To View the Properties of a Device

1. In the Removable Media Manager window, click a device icon.
2. From the Selected menu, choose Properties.
3. Click Close.

Note - To view properties using the command line, type:

```
% sdtmedia_prop -u k /vol/dev/rdisk/...
```

where *k* is b, k, m, or g to show capacities in bytes, kilobytes, megabytes, or gigabytes.

Formatting and Slicing Devices

You can format, name, and create file systems in a single operation on all types of removable devices using the format option in the Removable Media Manager window.

When the formatting process begins, two separate actions are launched. The first is a low-level format of the device, which utilizes a status bar to update you on the percentage completed. When the format is complete, the second action is launched, which applies the file system and optional name and slices to the device.

▼ To Format a Device

Formatting is done on all re-writable devices, including diskettes, Iomega Zip, and Iomega Jaz drives.

- 1. Click on a device icon.**
- 2. In the Removable Media Manager window, choose Format from the Selected menu.**

The Media Format window appears with appropriate selections.
- 3. Select either Quick Format or Long Format.**
- 4. Choose a type from the File System Type menu.**
- 5. (Optional) Under Volume Label, type a name for the formatted device.**

If no name is specified, the device is not named. If the device has already been formatted and has a volume name, the volume name is not shown.

If UFS was selected as the file system, the Solaris Slice Editor button appears in the dialog box.
- 6. Click Format.**

“Long Format” ignores password protection on the device. If the media is read-write protected, you are prompted for the password. “Long Format” is the default value for previously sliced media, write-protected media, or write-protected with password media.

Note - To format, name, and create file systems on all types of removable devices using the command line, type:

```
%sdtmedia_format -d volume_device_name
```

Creating Solaris Slices

Use the Media Slice Editor to create Solaris slices on a device. You can only create slices in a UFS file system. If you select a PCFS or UDFS file system, you will not have the option of creating Solaris slices.

After slices are created, you can use the Media Slice Editor to write UFS or UDFS file systems onto the slices. Where possible, the Media Slice Editor checks the slice values supplied by the user as well as the overall integrity of the slice information. For example, the editor reports errors for overlapping slices.

You can create slices by using AutoSlice or entering slice values into the Slice Details section manually.

▼ To Use AutoSlice

1. In the Media Format window, click Solaris Slice Editor.
2. In the Slice Editor window, click AutoSlice.
3. Use the spin box to increase or decrease the number of slices to be created in the Number of slices numerical text field.
4. Click OK in the AutoSlice window.
5. Click OK in the Slice Editor window.
6. Click Format in the Media Format window.

▼ To Use Slice Details

1. Select B, K, M, or C for the slice unit in byte, kilobyte, megabyte, or cylinder.
2. Enter the slice size in the Size field.

3. **Click New.**
4. **Repeat steps 2 and 3 for each new slice. The slice number and size appears in the left side of the window.**
5. **Click OK in the Slice Editor window.**
6. **Click Format in the Media Format window.**

Protecting a Device

Device protection enables you to view the software protection for a selected device and to either write protect, read-write protect, or disable protection. The device protection options are:

- Disable protection
- Write protect without password
- Write protect with password
- Read-write protect with password

▼ To View a Device's Protection

1. **In the Removable Media Manager window, click a device icon.**
2. **From the Selected menu, choose Properties.**

▼ To Disable Protection

This option allows the user to disable software protection if the device has been previously write or read-write protected.

1. **In the Removable Media Manager window, click the device icon.**
2. **From the Selected menu, choose Disable Protection.**
3. **If the media has been write or read-write protected with a password, type the password into the Password dialog box.**
4. **Click Apply.**

Note - To disable protection using the command line, type:

```
% sdtmedia_prot -d /vol/dev/rdisk/...
```

If the device is password protected, you are prompted for the password.

▼ To Enable Write Protection Without a Password

This option allows the user to enable software protection without password protection.

1. In the Removable Media Manager window, click the device icon.
2. From the Selected menu, choose Write Protect.

▼ To Enable Write Protection With a Password

This option allows the user to enable software protection with password protection.

1. In the Removable Media Manager window, click the device icon.
2. From the Selected menu, choose Read-Write Protect.
3. Click Write Protect with Password.
4. Click OK.
5. Type the password in the Enter Password field.
6. Type the password in the Verify Password field.
7. Click Apply.

▼ To Read-Write Protect With a Password

1. In the Removable Media Manager window, click the drive icon.

2. From the Selected menu, choose Read-Write Protect.
3. Click Read-Write Protect With Password.
4. Click OK.
5. Type the password in the Enter Password field.
6. Type the password in the Verify Password field.
7. Click Apply.

Note - To write protect using the command line, type:

```
% sdtmedia_prot -w /vol/dev/rdisk/...
```

If the device is not protected, the `-w` option write protects the device without a password, and does not display any dialogs. If the device is already protected, the Password dialog box appears.

Changing Your Password

To change your password, you must first disable the existing password protection and then apply the new password protection to the device.

▼ To Change Your Password

To change a password requires the following two procedures:

1. **“To Disable Protection” on page 16**
2. **“To Enable Write Protection With a Password” on page 17 or “To Read-Write Protect With a Password” on page 17**

Managing Windows

The following functionality is updated in the Solaris 8 6/00 software release.

This chapter explains how to use Graphical Workspace Manager and the Window List GUI.

Graphical Workspace Manager

Graphical Workspace Manager enables you to operate a workspace control panel. This panel displays a window containing a miniaturized picture of each workspace on the desktop. Workspaces may be created, deleted, renamed, tiled, or cascaded. Application windows may be moved (within or between workspaces), terminated, reduced to an icon, or maximized.

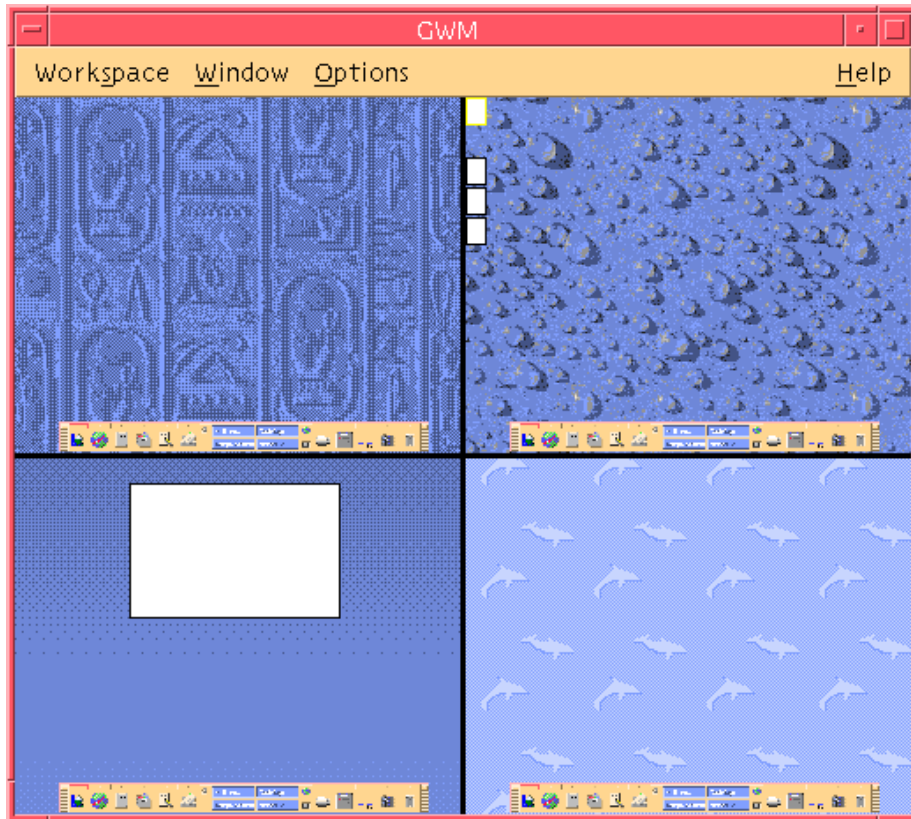


Figure 3-1 Graphical Workspace Manager Main Screen

When you click on Workspace, the menu shown in Figure 3-2 appears.

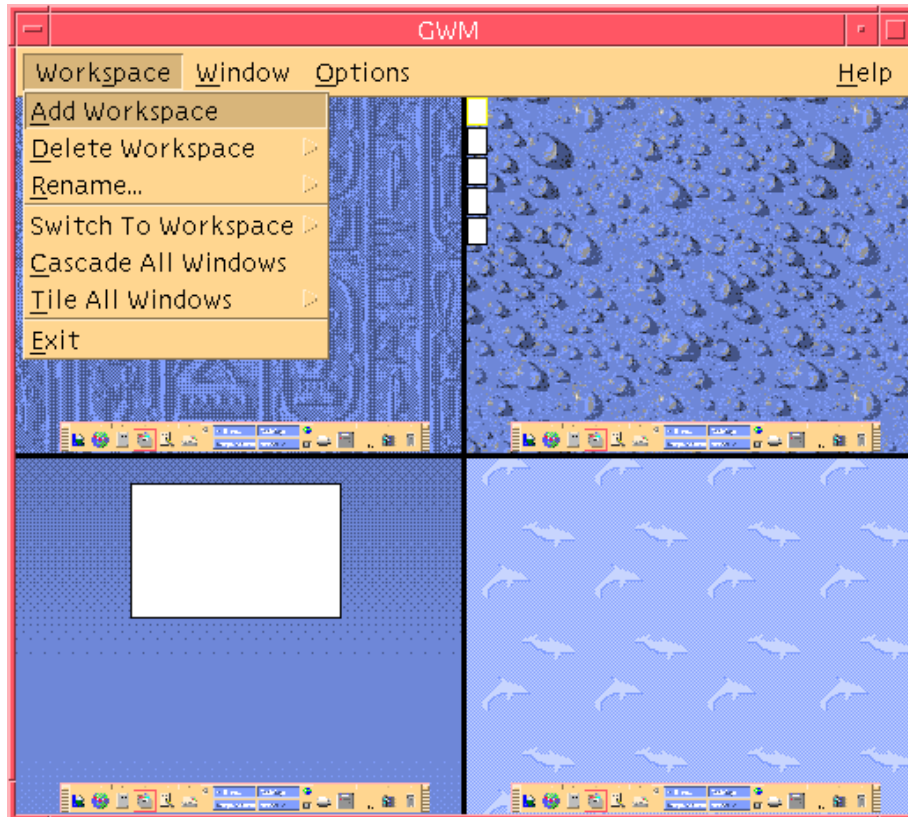


Figure 3-2 Workspace Menu

- **Add Workspace** – Adds a new workspace. Select Add Workspace and type a name for your new workspace in the Enter new workspace name field. Click OK.
- **Delete Workspace** – Removes a workspace.
- **Rename** – Renames an existing workspace. Type the new name into the dialog box.
- **Switch To Workspace** – Moves you to the workspace you want.
- **Cascade All Windows** – All top-level windows in the workspace are layered in a downward fan-style for easier viewing.
- **Tile All Windows** – All top-level windows are displayed in one workspace next to each other either vertically or horizontally.

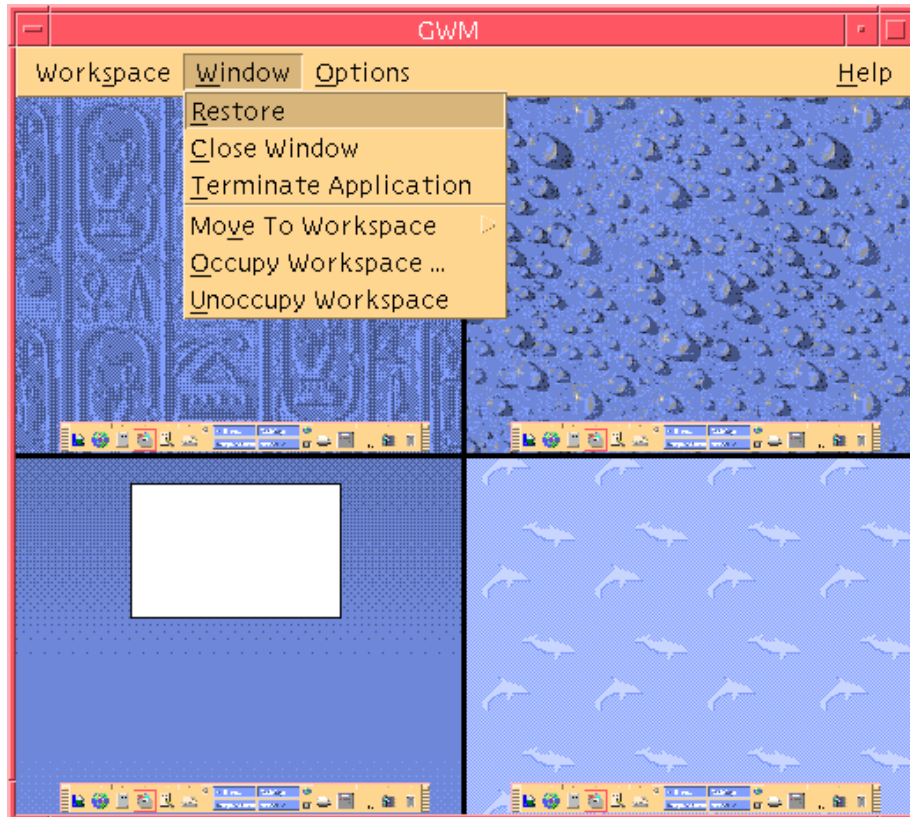


Figure 3-3 Window Menu

- Restore – Restores an iconized window to full-size proportion.
- Close Window – Click on the window you want to close.
- Terminate Application – Click on the Application that you want to discontinue use.
- Move to Workspace – Moves a window to a different workspace.
- Occupy Workspace – Adds a window to a workspace.
- Unoccupy a Workspace – Removes a window from a workspace.
- Show Workspaces – Displays all the workspaces in one workspace.

Window List

The Window List application displays a list of windows of all top-level windows on your desktop.

The screenshot shows a window titled "Window List" with a table of window information. The table has four columns: "Workspace", "State", "Application", and "Window Title". The data rows are as follows:

Workspace	State	Application	Window Title
CodeMgr	Minimized	Dtfile	File Manager - sandreas
CodeMgr	Minimized	SDtgwm	GWM
CodeMgr	Minimized	Dtterm	Run
Adept/ActionPla	Open	Dtterm	Terminal
CodeMgr	Minimized	Dtterm	Terminal
CodeMgr	Minimized	Dtmail	ha3mpk:INBOX

Figure 3-4 Window List GUI Main Screen

The Window List provides various information for all top-level windows that are displayed in a list format.

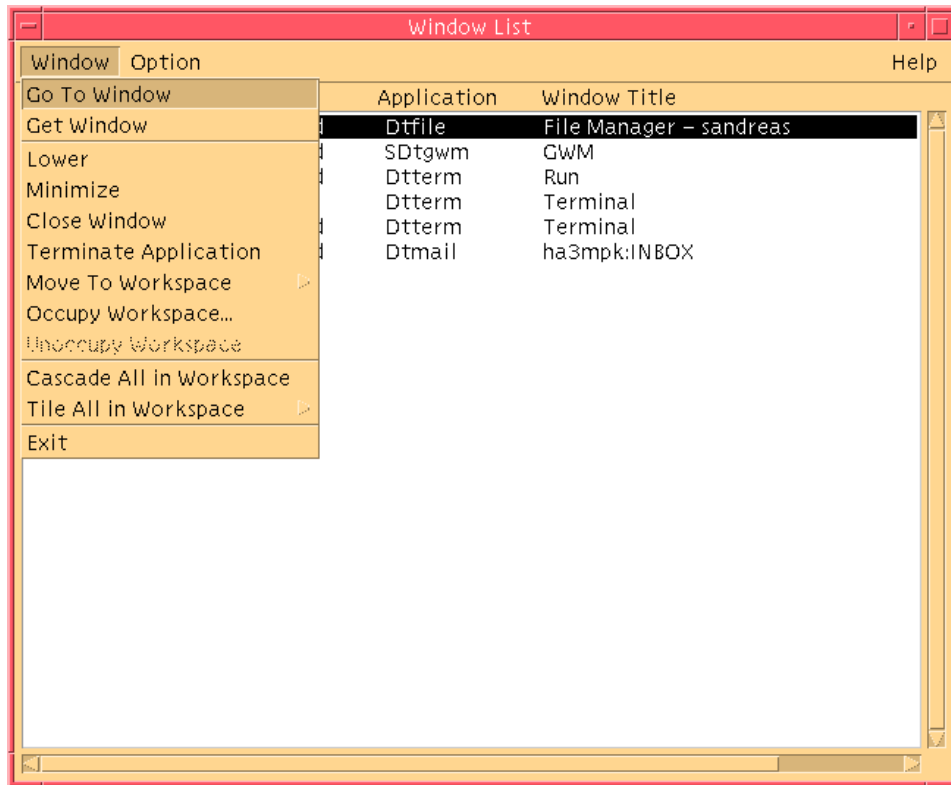


Figure 3-5 Window List GUI Tasks

- Go To Window – Transfers you to the workspace that you have selected.
- Get Window – Moves the window you have selected to the current workspace.
- Lower – Lowers the selected window to the bottom of the window stack.
- Minimize – Minimizes the selected window.
- Move To Workspace – Moves all selected windows from their current workspace to the selected workspace.
- Occupy Workspace – Enables you to specify the workspace you want a selected window to occupy.
- Unoccupy Workspace – Only available on windows that are currently occupying more than one workspace. Removes the window from the workspace.
- Cascade All in Workspace – Cascades all non-minimized windows in the current workspace in a layered fan effect.
- Tile All in Workspace – Tiles all non-minimized windows in the current workspace. Tiling can be done either horizontally or vertically. Windows are resized and next to each other so that they are all visible on the screen.

- **Sort Windows** – Enables you to select one of the following ways to sort windows for display on your screen: Workspace Name, Window Title, Application Type, or Window Class.
- **Display Options** – Displays the Options Dialog where you can set which columns to view. It also displays the default action performed when double-clicking a selected Window List item. See Figure 3-6.

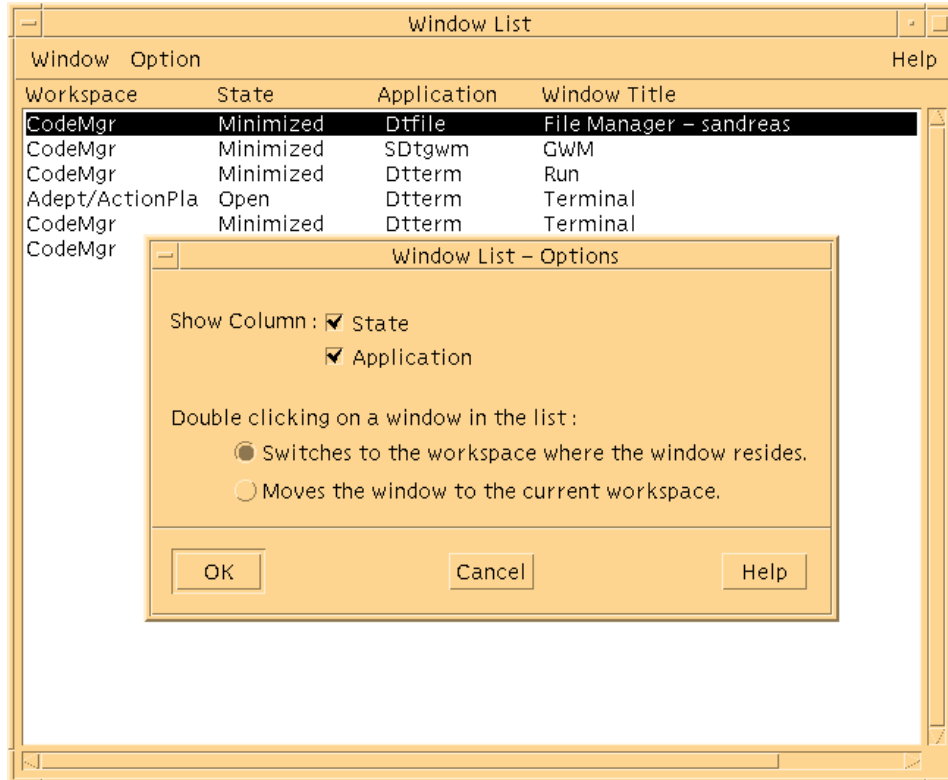


Figure 3-6 Window List GUI Display Options