



SunVTS Quick Reference Card

Sun Microsystems, Inc.
901 San Antonio Road
Palo Alto, CA 94303-4900
U.S.A. 650-960-1300

Part No. 806-6519-10
January 2001, Revision A

Send comments about this document to: docfeedback@sun.com

Copyright 2001 Sun Microsystems, Inc., 901 San Antonio Road, Palo Alto, California 94303-4900 U.S.A. All rights reserved.

This product or document is protected by copyright and distributed under licenses restricting its use, copying, distribution, and decompilation. No part of this product or document may be reproduced in any form by any means without prior written authorization of Sun and its licensors, if any. Third-party software, including font technology, is copyrighted and licensed from Sun suppliers.

Parts of the product may be derived from Berkeley BSD systems, licensed from the University of California. UNIX is a registered trademark in the U.S. and other countries, exclusively licensed through X/Open Company, Ltd. For Netscape Communicator™, the following notice applies: (c) Copyright 1995 Netscape Communications Corporation. All rights reserved.

Sun, Sun Microsystems, the Sun logo, AnswerBook2, docs.sun.com, SunVTS, and Solaris are trademarks, registered trademarks, or service marks of Sun Microsystems, Inc. in the U.S. and other countries. All SPARC trademarks are used under license and are trademarks or registered trademarks of SPARC International, Inc. in the U.S. and other countries. Products bearing SPARC trademarks are based upon an architecture developed by Sun Microsystems, Inc.

The OPEN LOOK and Sun™ Graphical User Interface was developed by Sun Microsystems, Inc. for its users and licensees. Sun acknowledges the pioneering efforts of Xerox in researching and developing the concept of visual or graphical user interfaces for the computer industry. Sun holds a non-exclusive license from Xerox to the Xerox Graphical User Interface, which license also covers Sun's licensees who implement OPEN LOOK GUIs and otherwise comply with Sun's written license agreements.

RESTRICTED RIGHTS: Use, duplication, or disclosure by the U.S. Government is subject to restrictions of FAR 52.227-14(g)(2)(6/87) and FAR 52.227-19(6/87), or DFAR 252.227-7015(b)(6/95) and DFAR 227.7202-3(a).

DOCUMENTATION IS PROVIDED "AS IS" AND ALL EXPRESS OR IMPLIED CONDITIONS, REPRESENTATIONS AND WARRANTIES, INCLUDING ANY IMPLIED WARRANTY OF MERCHANTABILITY, FITNESS FOR A PARTICULAR PURPOSE OR NON-INFRINGEMENT, ARE DISCLAIMED, EXCEPT TO THE EXTENT THAT SUCH DISCLAIMERS ARE HELD TO BE LEGALLY INVALID.

Copyright 2001 Sun Microsystems, Inc., 901 San Antonio Road, Palo Alto, California 94303 Etats-Unis. Tous droits réservés.

Ce produit ou document est protégé par un copyright et distribué avec des licences qui en restreignent l'utilisation, la copie, la distribution, et la décompilation. Aucune partie de ce produit ou document ne peut être reproduite sous aucune forme, par quelque moyen que ce soit, sans l'autorisation préalable et écrite de Sun et de ses bailleurs de licence, s'il y en a. Le logiciel détenu par des tiers, et qui comprend la technologie relative aux polices de caractères, est protégé par un copyright et licencié par des fournisseurs de Sun.

Des parties de ce produit pourront être dérivées des systèmes Berkeley BSD licenciés par l'Université de Californie. UNIX est une marque déposée aux Etats-Unis et dans d'autres pays et licenciée exclusivement par X/Open Company, Ltd. La notice suivante est applicable à Netscape Communicator™: (c) Copyright 1995 Netscape Communications Corporation. Tous droits réservés.

Sun, Sun Microsystems, le logo Sun, AnswerBook2, docs.sun.com, SunVTS, et Solaris sont des marques de fabrique ou des marques déposées, ou marques de service, de Sun Microsystems, Inc. aux Etats-Unis et dans d'autres pays. Toutes les marques SPARC sont utilisées sous licence et sont des marques de fabrique ou des marques déposées de SPARC International, Inc. aux Etats-Unis et dans d'autres pays. Les produits portant les marques SPARC sont basés sur une architecture développée par Sun Microsystems, Inc.

L'interface d'utilisation graphique OPEN LOOK et Sun™ a été développée par Sun Microsystems, Inc. pour ses utilisateurs et licenciés. Sun reconnaît les efforts de pionniers de Xerox pour la recherche et le développement du concept des interfaces d'utilisation visuelle ou graphique pour l'industrie de l'informatique. Sun détient une licence non exclusive de Xerox sur l'interface d'utilisation graphique Xerox, cette licence couvrant également les licenciés de Sun qui mettent en place l'interface d'utilisation graphique OPEN LOOK et qui en outre se conforment aux licences écrites de Sun.

CETTE PUBLICATION EST FOURNIE "EN L'ETAT" ET AUCUNE GARANTIE, EXPRESSE OU IMPLICITE, N'EST ACCORDEE, Y COMPRIS DES GARANTIES CONCERNANT LA VALEUR MARCHANDE, L'APTITUDE DE LA PUBLICATION A REPENDRE A UNE UTILISATION PARTICULIERE, OU LE FAIT QU'ELLE NE SOIT PAS CONTREFAISANTE DE PRODUIT DE TIERS. CE DENI DE GARANTIE NE S'APPLIQUERAIT PAS, DANS LA MESURE OU IL SERAIT TENU JURIDIQUEMENT NUL ET NON AVENU.



SunVTS Quick Reference

Starting the SunVTS Software

Follow these steps to start SunVTS.

▼ To Start SunVTS

- 1. Become superuser (root) and change directories to the SunVTS bin directory (/opt/SUNWvts/bin by default).**
- 2. If you are testing a local system type the following:**

```
# ./sunvts
```

- 3. If you are testing a remote machine that is running the SunVTS kernel, type the following:**

```
# ./sunvts -h remote_hostname
```

Replace *remote_hostname* with the hostname of the remote machine.

▼ To Start SunVTS Using OpenWindows™

1. Type the following:

```
# ./sunvts -l
```

▼ To Start SunVTS Using the SunVTS TTY Interface

1. Type the following:

```
# ./sunvts -t
```

TABLE 1-1 describes the common TTY interface command keys.

TABLE 1-1 Common TTY Interface Command Keys

Key	Description
Tab	Selects another panel; the selected panel is surrounded by asterisks (*)
Return	Selects an option or displays a menu
Space bar	Toggles (enables/disables) a choice
Arrow Keys	Moves the cursor in a selected panel
Escape	Discards a pop-up menu or window
Control-F	Scrolls forward in option windows
Control-B	Scrolls backward in option windows
Control-X	Quits the TTY Interface, but leaves the SunVTS kernel running on the test machine

SunVTS CDE Main Window

FIGURE 1-1 shows the SunVTS CDE main window.

Note – See the SunVTS User’s Guide for information about using the OPEN LOOK interface.

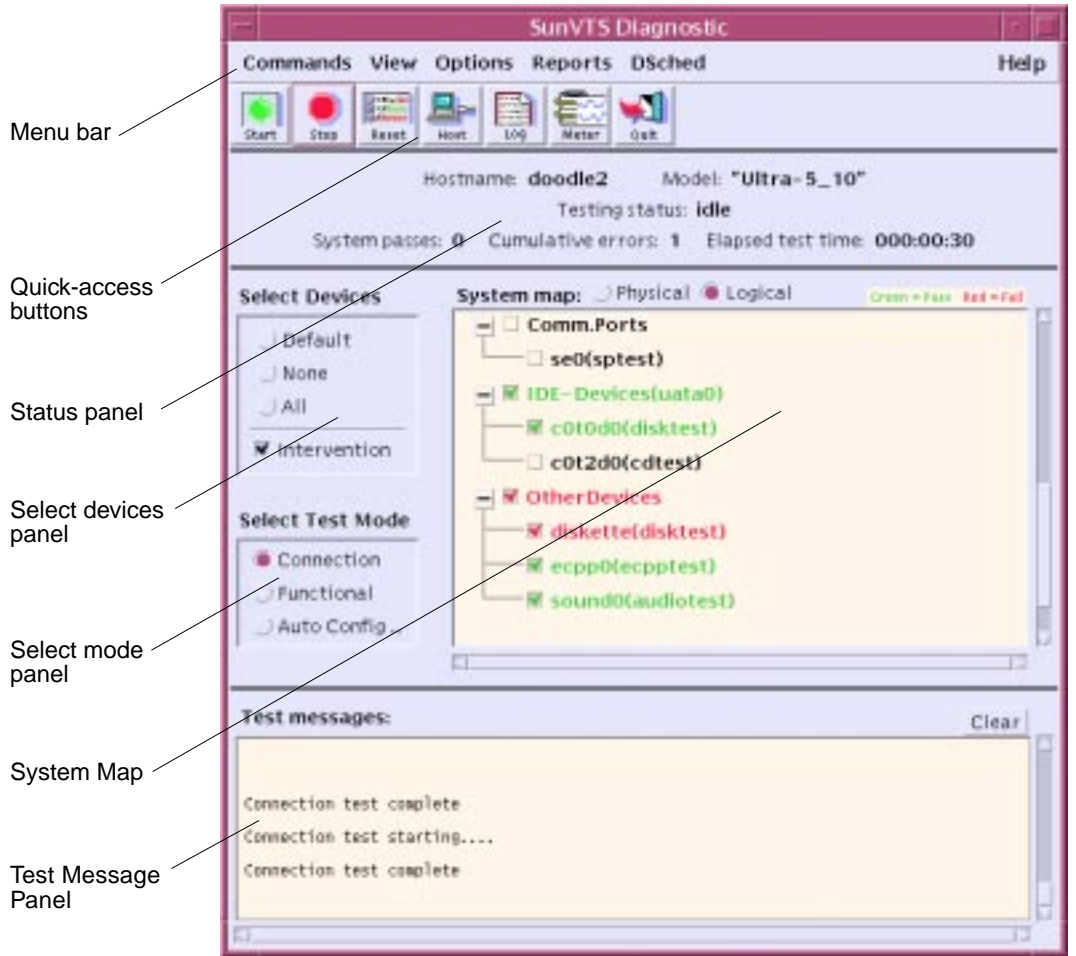


FIGURE 1-1 SunVTS CDE Main Window

FIGURE 1-2 describes the SunVTS menu bar:

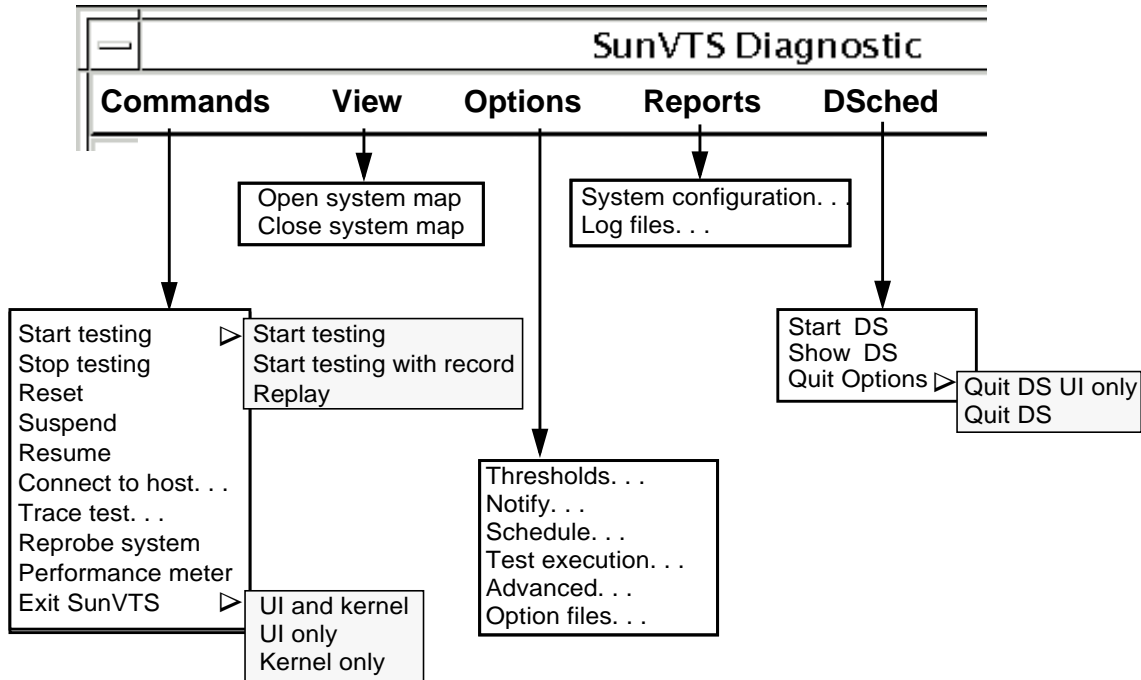


FIGURE 1-2 SunVTS Menus From the Menu Bar

Commands Menu

The Commands menu has the following functions.

- Start testing
 - Starts enabled tests
 - Starts enabled tests; records testing session
 - Replays a recorded testing session
- Stop: Stops testing
- Reset: Sets pass/error count to zero; pauses
- Suspend: Pauses active tests
- Resume: Resumes testing
- Connect to Host: Connects to another machine running SunVTS kernel
- Trace test: Traces enabled tests
- Reprobe system: Probes system again
- Quit SunVTS: Quits the following: UI and Kernel, UI only, Kernel only

View Menu

The view menu has the following options:

- Open System map
- Close System map

Options Menu

The Options menu has the following options:

- Thresholds
- Notify
- Schedule
- Test execution
- Advanced
- Option files

Reports Menu

The Reports menu contains the System Configuration menu which displays or prints System Configuration. It displays, prints, or removes log file information.

DSched Menu

The DSched menu provides access to the SunVTS Deterministic Scheduler as follows:

- Start DS—starts the Deterministic Scheduler feature and displays the Deterministic Scheduler dialog box.
- Show DS—displays the Deterministic Scheduler dialog box after you quit the DS UI.
- Quit Options—provides access to the following quit options:
 - Quit DS UI only—quits the Deterministic Scheduler dialog box and leaves the Deterministic Scheduler running.
 - Quit DS—quits the Deterministic Scheduler dialog box and stops the Deterministic Scheduler.

Help Menu

The Help menu provides access to the SunVTS version that is running and to a table that lists which versions of SunVTS run on the Solaris operating environment releases.

Quick Access Buttons

- Start: Starts enabled tests
- Stop: Stops active tests
- Reset: Resets pass and error counts to zero; pauses tests
- Host: Connects to a machine running SunVTS
- Log: Displays or prints log files
- Meter: Displays system performance meter
- Quit: Quits only the SunVTS user interface

Status Panel

The system status panel displays the following:

- Host name being tested
- Model being tested
- Testing status
- System passes
- Cumulative errors
- Elapsed test time

System Map

You can view devices in the System map as follows:

- Logical Mapping—organizes the devices, according to function, into groups.
- Physical Mapping—organizes the devices according to their exact location on the system.

Note – Use the View-->Open System Map command to expand collapsed groups in the system map.

The system map also provides access to the test options for each group and device, and displays the results of device testing:

- Asterisk—indicates a device is currently being tested.
- Black—indicates the device is not tested, or the first pass is not complete.
- Green—indicates at least one test completed with no errors detected.
- Red—indicates at least one error was detected.

Select Devices

With the Select Devices menu you can select the following:

- Default—selects the SunVTS default set of devices
- None—deselects all devices
- All—selects all devices
- Intervention—required before you can select tests that require special device preparation.

Select Test Mode

With the Select Mode option you can select the following:

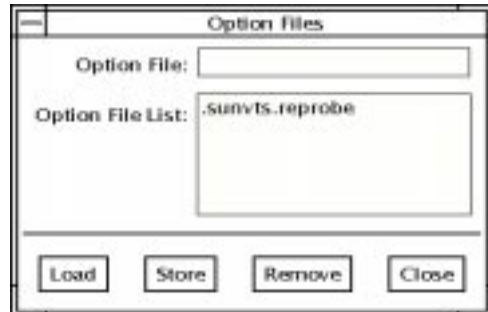
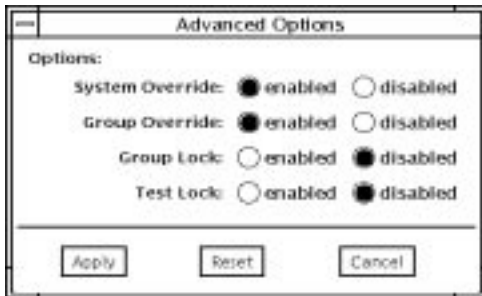
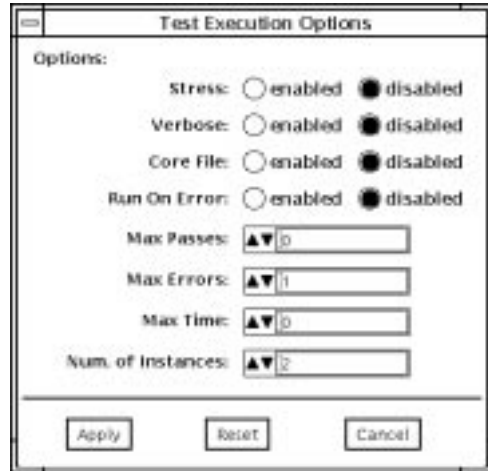
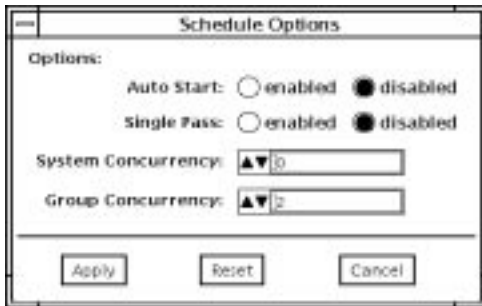
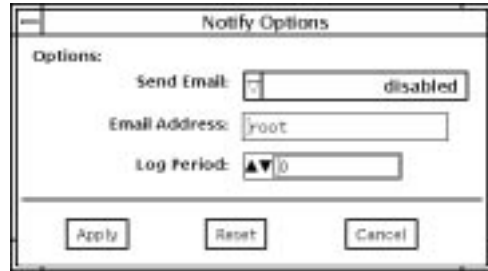
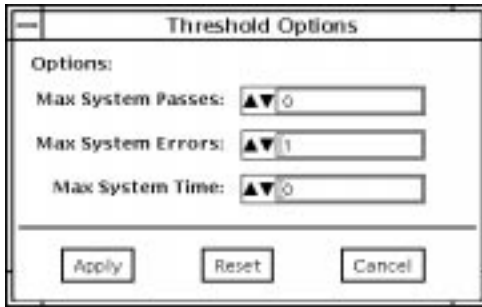
- Connection test mode—provides a low-stress, quick testing of the availability and connectivity of selected devices.
- Functional test mode—provides more robust testing of your system and devices as compared with connection test mode.
- Auto Config test mode—opens the Automatic Configuration dialog box which provides access to the Auto Config feature. This feature automatically assigns test options.

Test Message Panel

Test messages are displayed in the SunVTS console window, which displays errors and status.

SunVTS CDE Option Menu Dialog Boxes

These dialog boxes are displayed from the selections available in the Options Menu



Note—Use arrows to increase or decrease dialog box values.

FIGURE 1-3 SunVTS CDE Option Menus

SunVTS CDE Option Menu Dialog Box Descriptions

Threshold Options

- **Max System Passes**—States maximum number of system passes before stopping all tests (0 means infinite passes)
- **Max System Errors**—Indicates maximum number of errors before stopping all tests (default is 1)
- **Max System Time**—Indicates maximum number of minutes to run all tests (0 means infinite)

Notify Options

- **Send Email**—When selected, sends testing status messages to you through email
- **Email Address**—Establishes an email address where testing status messages are sent
- **Log Period**—Indicates time, in minutes, between testing status email messages

Schedule Options

- **Auto Start**—Begins testing when SunVTS is started; used with the Options Files option
- **Single Pass**—Runs only one pass of each selected test
- **System Concurrency**—Specifies the number of tests you want to run concurrently
- **Group Concurrency**—Specifies the number of test groups you want to run concurrently

Test Execution Options

- **Stress**—Increases test performance; only available for some tests
- **Verbose**—Displays verbose test messages in the SunVTS Console window
- **Core File**—When disabled, SunVTS sends messages instead of creating a core file
- **Run On Error**—Continues testing until the maximum error number is reached for the system; each test can report up to three error messages per failure

- Max Passes—Specifies maximum number of passes a test can be run
- Max Errors—Sets maximum number of errors a test will allow before stopping (0 means infinite)
- Max Time—Defines a time limit, in minutes, a test can run (0 means infinite)
- Number of Instances—Sets number of instances for each scalable test

Advanced Options

- System Override—Changes all test and group system options to match the options on this window (enabled by default)
- Group Override—Overrides any test system options in favor of the group options on this window, unless System Override is enabled
- Group Lock—Protects test group options from being changed
- Test Lock—Protects the test system options from being changed in this window, unless Group Override or System Override is enabled

Option Files

- Options File Load/Store/Remove—Displays file name field where you can enter a file name to load, store, or remove