



Sun HL7 Message Library User's Guide



Sun Microsystems, Inc.
4150 Network Circle
Santa Clara, CA 95054
U.S.A.

Part No: 820-2613-10
October 2009

Copyright 2009 Sun Microsystems, Inc. 4150 Network Circle, Santa Clara, CA 95054 U.S.A. All rights reserved.

Sun Microsystems, Inc. has intellectual property rights relating to technology embodied in the product that is described in this document. In particular, and without limitation, these intellectual property rights may include one or more U.S. patents or pending patent applications in the U.S. and in other countries.

U.S. Government Rights – Commercial software. Government users are subject to the Sun Microsystems, Inc. standard license agreement and applicable provisions of the FAR and its supplements.

This distribution may include materials developed by third parties.

Parts of the product may be derived from Berkeley BSD systems, licensed from the University of California. UNIX is a registered trademark in the U.S. and other countries, exclusively licensed through X/Open Company, Ltd.

Sun, Sun Microsystems, the Sun logo, the Solaris logo, the Java Coffee Cup logo, docs.sun.com, Java, and Solaris are trademarks or registered trademarks of Sun Microsystems, Inc. or its subsidiaries in the U.S. and other countries. All SPARC trademarks are used under license and are trademarks or registered trademarks of SPARC International, Inc. in the U.S. and other countries. Products bearing SPARC trademarks are based upon an architecture developed by Sun Microsystems, Inc.

The OPEN LOOK and Sun™ Graphical User Interface was developed by Sun Microsystems, Inc. for its users and licensees. Sun acknowledges the pioneering efforts of Xerox in researching and developing the concept of visual or graphical user interfaces for the computer industry. Sun holds a non-exclusive license from Xerox to the Xerox Graphical User Interface, which license also covers Sun's licensees who implement OPEN LOOK GUIs and otherwise comply with Sun's written license agreements.

Products covered by and information contained in this publication are controlled by U.S. Export Control laws and may be subject to the export or import laws in other countries. Nuclear, missile, chemical or biological weapons or nuclear maritime end uses or end users, whether direct or indirect, are strictly prohibited. Export or reexport to countries subject to U.S. embargo or to entities identified on U.S. export exclusion lists, including, but not limited to, the denied persons and specially designated nationals lists is strictly prohibited.

DOCUMENTATION IS PROVIDED "AS IS" AND ALL EXPRESS OR IMPLIED CONDITIONS, REPRESENTATIONS AND WARRANTIES, INCLUDING ANY IMPLIED WARRANTY OF MERCHANTABILITY, FITNESS FOR A PARTICULAR PURPOSE OR NON-INFRINGEMENT, ARE DISCLAIMED, EXCEPT TO THE EXTENT THAT SUCH DISCLAIMERS ARE HELD TO BE LEGALLY INVALID.

Contents

Working With the Message Library for HL7	5
Overview of HL7 and the Message Library for HL7	6
About HL7	6
The HL7 Standard	7
Components of the HL7 Message	7
HL7 Message Sets	8
Working With HL7 Message Libraries	11
Viewing a Message Library Using the Message Library Editor	11
Copying a Message Library to a Project	12
Modifying a Message Library Using the Message Library Editor	13
Using the Message Library Tester	30
HL7 Message Library Methods	32
HL7 Version 2.6 Message Library Structure	32
HL7 Version 2.5.1 Message Library Structure	46
HL7 Version 2.5 Message Library Structure	65
HL7 Version 2.4 Message Library Structure	84
HL7 Version 2.3.1 Message Library Structure	102
HL7 Version 2.3 Message Library Structure	115
HL7 Version 2.2 Message Library Structure	127
HL7 Version 2.1 Message Library Structure	132

Working With the Message Library for HL7

The topics listed on this page provide conceptual information and instructions for using the Message Library for HL7 to communicate with HL7 applications.

What You Need To Know

These links provide information you should know before using the Message Library for HL7:

- [“Overview of HL7 and the Message Library for HL7”](#) on page 6
- [“HL7 Message Library Methods”](#) on page 32
- [“HL7 Version 2.6 Message Library Structure”](#) on page 32
- [“HL7 Version 2.5.1 Message Library Structure”](#) on page 46
- [“HL7 Version 2.5 Message Library Structure”](#) on page 65
- [“HL7 Version 2.4 Message Library Structure”](#) on page 84
- [“HL7 Version 2.3.1 Message Library Structure”](#) on page 102
- [“HL7 Version 2.3 Message Library Structure”](#) on page 115
- [“HL7 Version 2.2 Message Library Structure”](#) on page 127
- [“HL7 Version 2.1 Message Library Structure”](#) on page 132

What You Need To Do

These links provide instructions on how to use and customize the Message Library for HL7:

- [“Viewing a Message Library Using the Message Library Editor”](#) on page 11
- [“Copying a Message Library to a Project”](#) on page 12
- [“Message Library Check Out and Check In”](#) on page 14
- [“Adding and Replacing Message Library Segments”](#) on page 14
- [“Managing Message Library Nodes, Elements, and Fields”](#) on page 18
- [“Specifying the Node Type”](#) on page 23
- [“Editing the Message Library Delimiters”](#) on page 24
- [“Changing HL7 Standard Encoding Characters”](#) on page 26
- [“Specifying Delimiters”](#) on page 26
- [“Using the Message Library Tester”](#) on page 30

More Information

This link provides additional information related to the Message Library for HL7:

- [“Node Properties” on page 19](#)
- [“Element Properties” on page 20](#)
- [“Field Properties” on page 22](#)
- [Sun Adapter for TCP/IP HL7 User's Guide](#)

Overview of HL7 and the Message Library for HL7

The Message Library for HL7 provides HL7 files formatted in Java™ syntax for use with Java CAPS applications. A Message Library, also known as an Object Type Definition (OTD) Library, is a compilation of pre-built message structures for industry-standard formats. The HL7 Message Library is designed to work in conjunction with the Sun Adapter for TCP/IP HL7 to help you establish and maintain an efficient and reliable HL7 messaging system.

The HL7 Message Library supports the following versions of HL7:

- [HL7 Version 2.1](#)
- [HL7 Version 2.2](#)
- [HL7 Version 2.3](#)
- [HL7 Version 2.3.1](#)
- [HL7 Version 2.4](#)
- [HL7 Version 2.5](#)
- [HL7 Version 2.5.1](#)
- [HL7 Version 2.6](#)
- [HL7 Version 3](#)

The HL7 Message Library files can be copied and modified using the Message Library Editor. The editor also allows you to test libraries and verify that all data elements are available and data formats are correct before runtime. The editor executes a trace of parsing during the unmarshal process to assist with troubleshooting.

About HL7

HL7 is a standard for electronic data exchange in healthcare environments. It standardizes the format and protocol for the exchange of certain key data sets among healthcare computer application systems. HL7 is designed to be flexible, allowing the various systems that send or receive patient information to share and apply data as needed. Because of this diversity in systems (data models, operating systems, communication environments, and so on), HL7 cannot be a plug and play interface standard.

HL7, or Health Level Seven, is also the name of an organization consisting of technical committees and special interest groups whose goal is to provide standards for the exchange,

management, and integration of data that support clinical patient care and the management, transfer, and assessment of healthcare services. More specifically, the goal is to create flexible, cost effective approaches, standards, guidelines, methodologies, and related services for interoperability between healthcare information systems.

The HL7 Standard

The HL7 standard addresses the interfaces among various systems that send or receive healthcare focused information, such as patient admissions, registration, discharge or transfer (ADT) data, queries, resource and patient scheduling, orders, results, clinical observations, billing, master file update information, medical records, patient referral, and patient care. It does not try to assume a particular architecture with respect to the placement of data within applications but is designed to support a central patient care system as well as a more distributed environment where data resides in departmental systems. Instead, HL7 serves as a way for dissimilar applications and data architectures operating in a heterogeneous system environment to communicate with each other.

Components of the HL7 Message

An HL7 transaction or message is comprised of a number of components in a defined sequence. This section defines the components of the HL7 transaction. The HL7 message is a unit of data transferred between systems. It consist of a group of segments in a defined sequence. Each message has a message type that defines its purpose. For example an ADT Message type is used to transmit portions of a patient's Patient Administration (ADT) data from one system to another. A three-character code contained within each message identifies its type. A trigger event, a real-world event such as a patient being admitted, initiates the exchange of messages.

Segments

A segment is a logical grouping of data fields. Segments may occur only once or repeat in a message and may be required or optional. Each segment is given a name. For example, the ADT message may include the following segments: Message Header (MSH), Event Type (EVN), Patient ID (PID), and Patient Visit (PV1). Segments are identified by unique three-character codes known as the Segment IDs.

Fields

A field is a string of characters. HL7 is not concerned with how a system actually stores data within an application. When fields are transmitted, they are sent as character strings. Except where noted, HL7 data fields may take on the null value. Sending the null value, which is transmitted as two double quote marks (""), is different from omitting an optional data field. The difference appears when the contents of a message is used to update a record in a database rather than create a new one. If no value is sent, (that is, it is omitted) the old value should remain unchanged. If the null value is sent, the old value should be changed to null.

Data field characteristics are as follows:

- **Position:** The ordinal position or sequence of the data field within the segment.
- **Maximum Length:** Maximum number of characters that one occurrence of the data field may occupy.
- **Type of Data:** Restrictions on the contents of the data field. There are a number of data types defined by HL7, for example TX (text data), SN (structured numeric), PT (processing time), DT (date), and so on.
- **Optionality:** Whether the field is required, optional, or conditional in a segment.
- **Repetition:** Whether the field may or may not repeat, or the number of times the field may repeat.
- **Table:** The manner in which HL7 defines the valid values for tables varies depending on institution, data type, reference, and so forth.
- **ID Number:** Small integer that uniquely identifies the data field throughout the Standard.
- **Name :** Descriptive name for the field.

Message Delimiters

Message delimiters are the specific predefined characters that are used to define the beginning and end of a message component. They are the segment terminator, the field separator, the component separator, subcomponent separator, repetition separator, and escape character.

Escape Sequences in Text

Fields Escape sequences vary depending on the type of field.

HL7 Message Sets

HL7 messages are grouped by type or purpose into transaction sets. For example, a Patient Administration (ADT) message is used to transmit patient admittance, transfer, demographic and discharge information. The Patient Administration transaction set includes messages that transmit portions, instances, or updates of this data necessary to the participating healthcare system.

Control

Control defines the general rules that apply to all messages, including the form used to describe messages, encoding rules for converting abstract messages to string characters, programming procedures for exchanging messages, relationship with lower level protocols, common message segments, and the acknowledgment message that can be used as-is in multiple applications.

Patient Administration

The Patient Administration transaction set (HL7 Standard, chapter 3), one of the most commonly used, provides demographic and visit information about patients. The event is transmitted as an unsolicited update or as a response to a record-oriented query.

Order Entry

The Order Entry transaction set provides for the transmission of orders for materials or services, and information regarding orders, for specific patients or departments. Order Entry messages include components that specify quantity, timing, billing, start and end date, priority, and so on.

Query

The Query transaction set provides requests for specific information with either an immediate or deferred response, depending on the type of query. Newer versions of HL7 include many of the most common queries that are likely to occur in a hospital.

Financial Management

The Financial Management transaction set provides for the entry and manipulation of information pertaining to billing accounts, adjustments, payments, charges, insurance, and other related patient billing and A/R information.

Observation Reporting

The Observation Reporting message set provides for the transmission of structured patient-oriented clinical information. This includes clinical observations such as clinical laboratory results, the results of imaging studies (excluding images), EKG pulmonary function studies, vital signs, intake and output, measures of patient status and condition, severity and/or frequency of symptoms, drug allergies, diagnostic lists, physician and nursing history, physicals, progress notes, operative notes and so on. Message information is reported in text, numeric or categorical values.

Master File

A master file is a common reference file containing more or less permanent descriptive information about a principal subject. In the healthcare environment, some common master files are doctor, location, system user, patient status, patient type, lab test definition, exam code definition, and charge master files. The Master Files Notification messages support the distribution of changes to various master files between systems, by either providing changes to the files or making data available for review and possible inclusion.

Medical Records/Information Management

The Medical Document Management (MDM) transaction set provides for the transmission of new or updated documents. MDM messages may contain a description of the status of a document (for example, the document has been dictated and is awaiting transcription) or both the status description and the document itself. A medical document or record is a legal document that serves as an accurate and comprehensive account of healthcare services provided to a patient.

Scheduling

The Scheduling transaction set supports the communication of various events in relation to schedules, appointments, services and resources. A schedule controls the dates and times available for the performance of a service or the use of a resource. The scheduling set contains three basic types of messages:

- The Request transaction, used to request an appointment for services or the use of resources.
- The Query transaction, which actively solicits scheduling information between systems.
- The Unsolicited transaction, which passively gathers and provides scheduling information between systems.

Scheduling messages may also contain other supporting information, including the reason for the appointment, patient information, person initiating the appointment, and location.

Patient Referral

The Patient Referral transaction set provides for patient referral communications between separate healthcare related entities. This includes primary healthcare providers, hospitals, labs, specialists, government agencies, and other healthcare entities. The receiving entity may require billing information, test results, provider information, patient demographics and so forth, calling for multiple inquiries and responses. For this reason, the referral set includes the referral, requests for information, and returned patient information.

Patient Care

The Patient Care transaction set supports the communication of problem-oriented records which include clinical problems, goals, and clinical pathway information. The problem in this case may be a diagnosis or other professional description of healthcare issues affecting a specific patient. Goals are objectives to be attained as the result of healthcare intervention applied to an individual. A pathway refers to a standardized plan of care by which progress toward an expected outcome is measured.

Laboratory Automation

The Laboratory Automation transaction set supports the communication of equipment information, including status, inventory, logs and service, test code settings, response, notification, and comment, as well as specimen status.

Application Management

The Application Management transaction set supports the transmission of application management information and application control-level requests.

Personnel Management

The Personnel Management transaction set supports the transmission of details regarding education, language, practitioner, and professional affiliations, as well as information on practitioner organization unit, and staff identification.

Working With HL7 Message Libraries

The Message Library Editor displays the structure of a selected Message Library and allows you to verify its operation with a built-in tester. You can also use the editor to create and modify Message Libraries.

The following topics provide information specific to using Message Libraries with the Message Library Editor. These Message Libraries are templates that correspond to message types used by industry-specific data exchange systems and open-source standards. The templates are predefined and can be used as-is.

- [“Viewing a Message Library Using the Message Library Editor” on page 11](#)
- [“Copying a Message Library to a Project” on page 12](#)
- [“Modifying a Message Library Using the Message Library Editor” on page 13](#)
- [“Using the Message Library Tester” on page 30](#)

Note – Only the base and generic 2.6 libraries are installed by default. You need to install the Message Libraries for the versions of HL7 you are using separately. For more information, see [“Installing Additional Repository-Based Java CAPS Components” in *Installing Additional Components for Java CAPS 6*](#).

Viewing a Message Library Using the Message Library Editor

The Message Library Editor displays the structure of a selected Message Library and allows you to verify its operation with a built-in tester. You can also use the editor to create and modify User-Defined Message Libraries.

▼ To View a Message Library

- 1 In the NetBeans IDE, make sure you are connected to the CAPS Repository.
- 2 In the Projects window, expand CAPS Components Library > Message Library > HL7.
- 3 Under HL7, expand the appropriate HL7 Library version.

Note – The Message Libraries available under Message Library in the Projects window are protected (read-only).

- 4 Double-click the Message Library in the Projects window to view the Message Library in read-only mode.

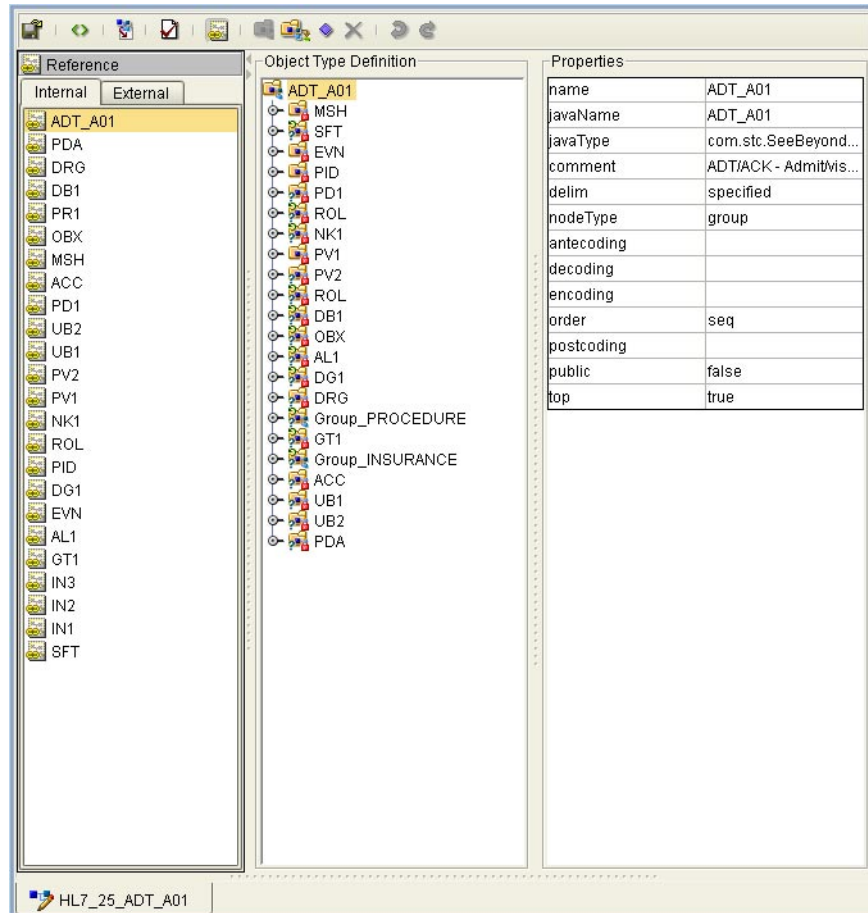
Copying a Message Library to a Project

You can copy and paste a Message Library to your Project to view the Message Library in an editable mode.

▼ To Copy a Message Library to the Project

- 1 In the NetBeans IDE, make sure you are connected to the CAPS Repository.
- 2 In the Projects window, expand CAPS Components Library > Message Library > HL7.
- 3 Under HL7, expand the appropriate HL7 Library version.
- 4 Select the Message Library you want to copy, and then select Edit > Copy from the NetBeans toolbar.
- 5 Right-click the Project to which you want to paste the Message Library, and then select Paste. The Message Library is added to your Project on the Projects window.
- 6 Double-click the copied Message Library to view it in the Message Library Editor.

The editable Message Library appears in the Message Library Editor. Notice that for the Message Libraries, the Message Library segments are still write protected. The Message Libraries properties can only be modified from the Root node at this point.



- 7 Select any of the Message Library's nodes or sub-nodes in the Object Type Definition pane to see the nodes properties displayed in the editor's Properties pane.

Modifying a Message Library Using the Message Library Editor

- “Message Library Check Out and Check In” on page 14
- “Adding and Replacing Message Library Segments” on page 14
- “Managing Message Library Nodes, Elements, and Fields” on page 18
- “Message Library Properties” on page 18
- “Specifying the Node Type” on page 23
- “Editing the Message Library Delimiters” on page 24
- “Changing HL7 Standard Encoding Characters” on page 26

- “Specifying Delimiters” on page 26

Message Library Check Out and Check In

The Message Libraries installed for the Message Library for HL7 are located in the Project window in the CAPS Components Library > Message Library > HL7 tree. These Message Libraries are protected and cannot be checked out or modified. This assures that the original Message Libraries are always available in their original form.

If you copy and paste an HL7 Message Library to a Project, version control is available for that Message Library. To check in or check out a Message Library, right-click the Message Library from the Project Explorer tree, and select Version Control > Check Out or Check In from the shortcut menu. When a Message Library has been checked in, the Message Library file icon appears in the Projects window as locked (the icon includes a red padlock).

Adding and Replacing Message Library Segments

HL7 Message Libraries are made up of various segment Message Libraries that correspond to the HL7 message segments. The main HL7 Message Libraries contain references to the segment Message Libraries, which are located in the same HL7 directory.

▼ To Replace a Message Library Segment

The following example uses the HL7_25_ADT_A02 Message Library segment to illustrate removing a segment Message Library and replacing it with a different segment. For example, if you are working with a V2.6 library and want to use the V2.5 version for one or more segments, you can replace those segments in your Message Library. It is important to retain the original Message Library structure. If you will be doing any cutting, pasting, or deleting of segments, make a note of the Message Library segment order in the Editor’s Object Type Definition pane.

The following steps illustrate deleting a Message Library segment from this list, so it is important to make a note of the original segment location so that you can relocate the edited segment to its original position in the Message Library structure as illustrated in the figure.

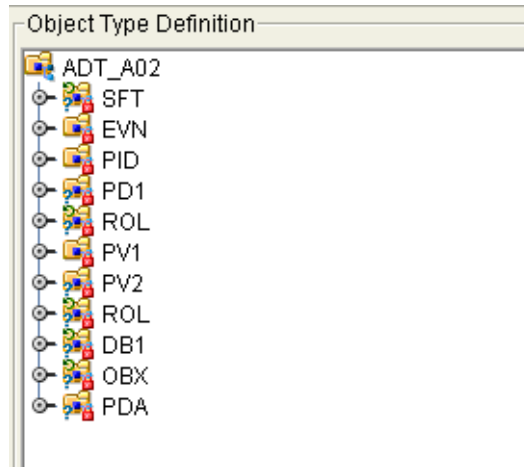
- 1 **On the Projects window, copy the Message Library you want to use for your Project from CAPS Components Library > Message Library > HL7 and paste it into the Project.**

Tip – To copy the Message Library segment, use the copy command from the Tools menu.

- 2 **Repeat the above step for any Message Libraries that contain segments you want to use in the above Message Library.**
- 3 **Double-click the pasted Message Library from step 1 above to display it in the Message Library Editor.**

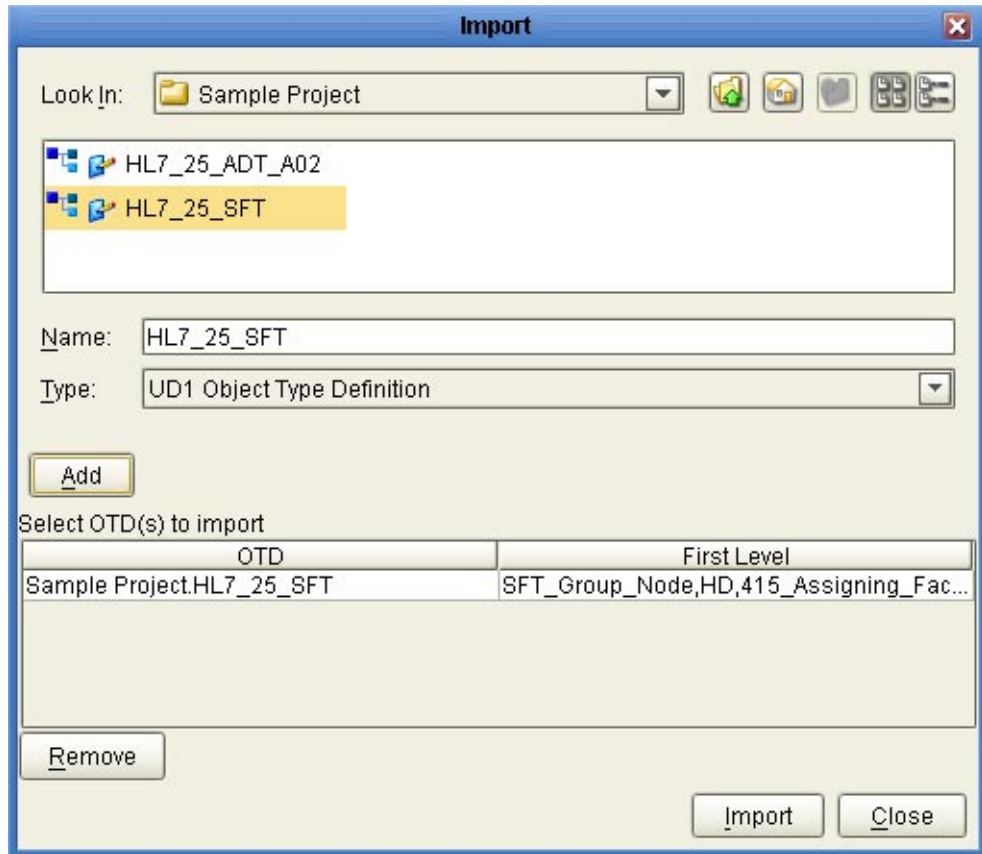
4 Make note of the Message Library segment order so you can maintain the structure.

The figure below shows the structure of the HL7_26_ADT_A02 segment.



- 5 Click the Internal tab in the Reference pane, right-click the segment you want to replace, and then click Delete.**
- 6 In the Internal tab, select the top-level node to display all segments in the Object Type Definition pane.**
- 7 In the Object Type Definition pane, right-click the same segment you deleted above, and click Delete again.**
- 8 In the Reference pane, click External, right-click any of the references to the segment you just removed, and then click Delete.**
This removes all other references to the segment Message Library.
- 9 On the Message Library Editor toolbar, click Import OTD From External Template.**
The Import dialog box appears.
- 10 In the Look In field, navigate to the location of the Message Library that contains the segment that will replace the one you just deleted.**
This is one of the Message Libraries you pasted into a Project in step 2 above.
- 11 Locate and select the Message Library you want to import to your Project file.**

- 12 Click Add to add the Message Library to the Select OTD(s) to Import section. Click Import.**
The Message Library is added to the External tab of the Reference pane.



- 13 Drag the imported segment reference from the External tab and drop it onto the root node of the Object Type Definition pane.**
The segment is added to the Object Type Definition tree.
- 14 Right-click the segment and click Level Up to move the segment up the tree from the Object Type Definition tree.**
Repeat this step until the new segment is in the same position as that of the segment being replaced.
- 15 Repeat this procedure for any additional segments you want to replace.**

16 Save the changes to the Repository.

You can now open the segment Message Library and edit the properties.

▼ **To Add a Segment Message Library to a Message Library**

You can also modify a Message Library by adding additional segment Message Libraries to your Message Library's external template.

- 1 On the Projects window, copy the Message Library you want to use for your Project from CAPS Components Library > Message Library > HL7 and paste it into the Project.**

Tip – To copy the Message Library segment, use the copy command from the Tools menu.

- 2 Repeat the above step to copy any segment Message Libraries you want to import to your Project.**

This opens the Message Library in the Message Library Editor.

- 3 Double-click the Message Library to which you want to add the segment.**

The Message Library Editor appears.

- 4 On the Message Library Editor toolbar, click Import OTD From External Template.**

The Import dialog box appears.

- 5 In the Look In field, navigate to the location of the Message Library that contains the segment that will replace the one you just deleted.**

This is one of the Message Libraries you pasted into a Project in step 2 above.

- 6 Locate and select the Message Library you want to import to your Project file.**

- 7 Click Add button to add the Message Library to the Select OTD(s) to Import section.**

- 8 Click Import.**

The Message Library is added to the External tab of the Reference pane.

- 9 Drag the imported segment reference from the External tab and drop it onto the root node of the Object Type Definition pane.**

The segment is added to the Object Type Definition tree.

- 10 Right-click the segment and click Level Up to move the segment up the tree from the Object Type Definition tree.**

Repeat this step until the new segment is in the location you want it.

11 Save the changes to the Repository.

Managing Message Library Nodes, Elements, and Fields

The HL7 Message Library copied to your Project can only be edited from the root node. Each of the Message Library's segments are write protected. The Message Library segments are visible from the Reference pane of the Message Library Editor. This Reference pane contains internal and external templates for the Message Library file. To edit specific segments of a Message Library, see [“Editing the Message Library Delimiters” on page 24](#). For more information regarding Message Library properties, see [“Message Library Properties” on page 18](#).

The Message Library Editor allows you to add and delete nodes, elements, and fields in a Message Library. You can also prune nodes, which deletes only the children associated with the node while the node itself is preserved. Pruning can only be performed on nodes. When you delete a node, all associated children are deleted. When you delete an element, all associated fields are deleted.

▼ To Manage Message Library Nodes, Elements, and Fields

- 1 To add a node, element, or field to the Message Library structure, right-click the
 - a. Right-click the node to which you want to add the node, element, or field.
 - b. Click Add, and then select the type of object to add.
 - c. In the Properties pane, customize the properties for your data requirements.
See [“Message Library Properties” on page 18](#) for more information about properties.
- 2 To remove a node, element, or field, right-click the object to remove and then click Delete.
- 3 To prune a node, right-click the node and then click Prune.

Message Library Properties

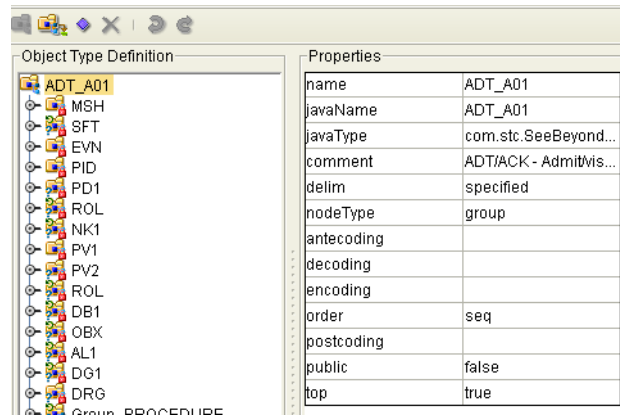
The Object Type Definition pane of the Message Library Editor displays the nodes, elements, and fields of the Message Library. When any of these are selected, the item's properties are displayed in the Properties pane.

The following topics list and describe each property:

- [“Node Properties” on page 19](#)
- [“Element Properties” on page 20](#)
- [“Field Properties” on page 22](#)

Node Properties

When an HL7 Message Library is opened in the Message Library Editor, the properties of the root node are displayed in the Properties pane. The configurable node properties are shown in the following figure and described in the table below.



Property	Description
name	The node display name. This can be any string.
javaName	The property accessor basename. This is normally derived from the display name, modified to suit the restrictions on Java identifiers, and supplied automatically by the Sun Enterprise Service Bus. Do not modify this property.
javaType	The Java type. This is automatically assigned, and not is editable.
comment	Free-form text (no runtime effect).
delim	The specified delimiter. See “Specifying Delimiters” on page 26.
nodeType	Governs the marshal/unmarshal format. See “Specifying the Node Type” on page 23.
antecoding	The input data coding. See “Changing HL7 Standard Encoding Characters” on page 26. If this property is not specified, the value specified for the <code>decoding</code> property will be used for the input data. This property is displayed only when the <code>top</code> property is set to true .

Property	Description
decoding	The unmarshal coding. See “Changing HL7 Standard Encoding Characters” on page 26. It is recommended to use UTF-8 for DBCS data, since the hex value of some ASCII delimiter may coincide with a hex value contained within a double-byte character. This property is displayed only when the top property is set to true .
encoding	The marshal coding. This property is displayed only when the top property is set to true .
order	Specifies the ordering of the root node’s children: <ul style="list-style-type: none"> ■ seq: Specifies that the child nodes must appear in sequence. ■ any: Specifies that the child nodes can appear in any order. ■ mix:
postcoding	Specifies the output data coding (see Specifying Data Encoding on page 219). If this property is not specified, the value specified for the encoding property will be used for the output data. This property is displayed only when the top property is set to true .
public	Reserved for future development
rootClassName	The Java class name corresponding to the root node.
top	An indicator of whether the root node supports marshal/unmarshal (T/F).

Element Properties

The set of properties associated with the element level is shown in the following figure and is described in the table below.

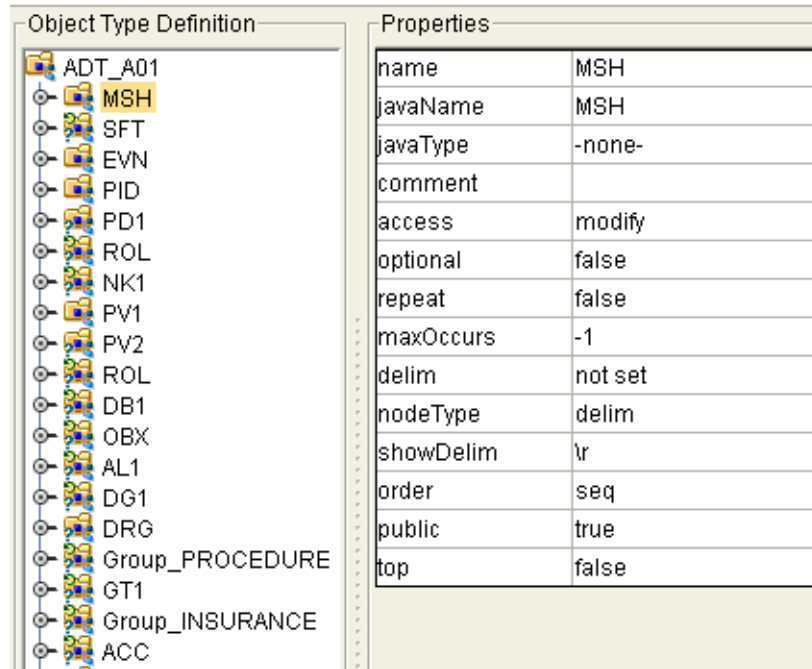


FIGURE 1 Message Library Editor - Message Library Element Properties

Property	Descriptions
name	The element display name.
javaName	Property accessor basenane. Do not modify this property; it is assigned by the Sun Enterprise Service Bus.
javaType	The Java type. This is automatically assigned, and is not editable.
comment	Free-form text (no runtime effect).
access	The access specification.
optional	An indicator of whether the element is required or optional. Specify true if the element is optional; otherwise specify false . This is not applicable to the root or to a child of a choice node.
repeat	An indicator of whether the element can have multiple instances. Specify true if the element can appear multiple times; otherwise specify false . This is not applicable to the root or to a child of a choice node.
maxOccurs	The maximum number of occurrences of the node if the node is repeating. This property has no effect if node is non-repeating, but might show an error during validation if set to a value greater than 1.

Property	Descriptions
delim	The delimiter specification (see “ Specifying Delimiters ” on page 26).
nodeType	Governs the marshal/unmarshal format. See “ Specifying the Node Type ” on page 23.
showDelim	If the nodeType property is delimited, the delimiter appears here. This field is not editable.
public	For future use, not currently active.
top	An indicator or whether marshal/unmarshal is supported. Specify true if it is supported; otherwise specify false .

Field Properties

The set of properties associated with the field level is shown in the following figure and is described in the table below.

The screenshot shows the Message Library Editor interface. On the left, the 'Object Type Definition' tree is expanded to show the 'MSH' segment, with the 'MSH_segment_ID' field selected. On the right, the 'Properties' table lists the following attributes for this field:

Property	Value
name	MSH_segment_ID
javaName	MSH_segment_ID
javaType	java.lang.String
comment	
access	modify
optional	false
repeat	false
maxOccurs	-1
delim	not set
initial	MSH
match	MSH
nodeType	fixed
align	blind
decoding	
encoding	
length	3

FIGURE 2 Message Library Editor - Message Library Field Properties

Property	Descriptions
name	The field display name.
javaName	The property accessor basename. Do not modify this property; it is assigned by the Sun Enterprise Service Bus.
javaType	The Java type. This can be either java.lang.String or byte array (byte[]).
comment	Free-form text (no runtime effect).
access	The access specification.
optional	An indicator of whether the field can be absent from an instance. Clicking the Value field toggles between true and false. Not applicable if the field is the child of a choice element node.
repeat	Specifies whether or not the node can appear multiple times. Specify true if the node is optional; specify false if it is required. Click in the field to toggle between true and false. This is not applicable if the field is the child of a choice element node.
maxOccurs	The maximum number of occurrences of the node if the node is repeating. This property has no effect if the node is non-repeating, but it might show an error during validation if set to a value greater than 1.
delim	The delimiter specification (see “Specifying Delimiters” on page 26).
initial	The initial field value, which is set when the parent node is created or reset. When provided, it is assigned to the node before the node is populated with any data.
match	If nodeType is delimited, performs an exact match to the data.
nodeType	Governs the marshal/unmarshal format. See “Specifying the Node Type” on page 23 .
align	Specifies the byte alignment criteria for the match property.
decoding	The unmarshal coding. This is displayed only if the nodeType property is set to fixed. It is recommended to use UTF-8 for DBCS data, since the hex value of some ASCII delimiter may coincide with a hex value contained within a doublebyte character.
encoding	The marshal coding. This property is displayed only if the nodeType property is set to fixed.
length	The length of the field. This property is displayed only if the nodeType property is set to fixed.

Specifying the Node Type

Note – If you move a Message Library node, you must reset the nodeType for that node.

▼ To Specify a Node Type

- 1 In the Message Library Editor, expand the Message Library until the field you want to edit appears in the Object Type Definition pane.
- 2 Select the field to edit.
- 3 Click in the `nodeType` field, and then click the arrow to display the options.
- 4 Select the option you want, and then save the Message Library.

The following table describes the `nodeType` options.

Option	Description	Element	Field	Internal
array	Array is a delimited structure. If repeated, occurrences are separated by the repeat delimiter. The last occurrence may be terminated by a normal delimiter.	Yes	Yes	simple or group
delim	Delim (delimited) structure. If repeated, occurrences are separated by a normal delimiter.	Yes	Yes	simple or group
fixed	Fixed indicates a fixed length, which is specified by non-negative integer (or zero to indicate end of parent node data).	Yes	Yes	simple or group
group	Group provides organizational grouping for purposes such as repetition. Applies only to elements.	Yes	No	group
trans	Trans (transient) appears only in an internal tree as a scratch pad field. It does not appear in external data representation, and can only have trans nodeTypes as children.	Yes	Yes	choice, simple, or group

Editing the Message Library Delimiters

Delimiters for all node levels are set and modified from the root node. Be aware that the default level 1 delimiter character is a non-ASCII character. Once it has been changed it cannot be typed back in as a character, but it can be pasted. For information about editing a specific segment of the Message Library, see [“Managing Message Library Nodes, Elements, and Fields” on page 18](#).

▼ To Edit the Delimiters From the Root Node

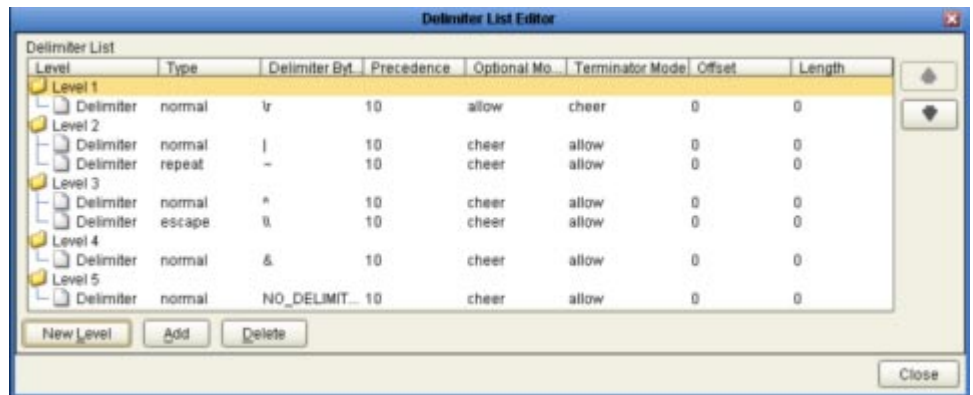
1 Select the root node in the Object Type Definition pane of the Message Library Editor.

2 Double-click the `delim` properties field in the Properties pane.

An ellipsis (...) button appears in the field.

3 Click the ellipsis button.

The Delimiter List Editor appears.



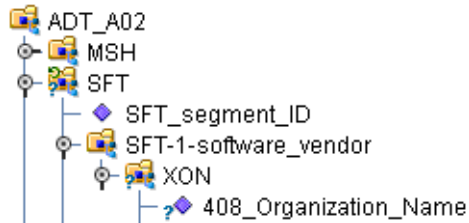
4 Double-click any field in the Delimiter List Editor on any level to make the field editable or to display a list of options.

5 For Level 3, do the following:

a. Double-click the Delimiter Bytes field for level 3.

b. Change the current delimiter character to a pound sign (#), Tab to the next field, and then click OK.

The delimiter for all level 3 nodes in the Message Library is now a pound sign (#), unless it is specified differently for a specific segment. The figure displays an example of various levels in the Object Type Definition tree, from the Root node.



Changing HL7 Standard Encoding Characters

All HL7 Message Libraries have a predefined list of delimiters, per the definition in the HL7 Standard. If you elect to change the delimiter encoding characters in your HL7 messages, you must change the delimiter in the Message Library from the root node using the Message Library Editor to match the delimiters used in the HL7 message.

The delimiter encoding character field is a fixed-length field of four encoding characters plus the field separator. The fifth (extra) character is necessary for the segment field separator.

If you wish to validate against the encoding characters, modify the prebuilt Collaboration rules as follows:

```

// first unmarshal the HL7 OTD payload

// then get the encoding character field:

String encodingChars = otdHL7_GENERIC_EVT_1.getMSH().getMsh2EncodingCharacters();

if (!encodingChars.equals("<customer_encoding_characters>")) {

validated = false;

ErrorMessage = "Validation Failure: Receiving Facility";

log( LOG_LEVEL_ERROR, "Validate HL7 Message failed: Encoding character field" );

}

```

Specifying Delimiters

A node defines a set of delimiters to be used in the external data representation for itself and its descendents in the hierarchical data structure. If a node defines a delimiter list, this negates any effect of any ancestor's delimiter list on itself and its descendents. The delimiter list is typically specified on the Root node.

For example, if you want to parse the following data:

```
a^b|c^d|e
```

you might define a Message Library as follows:

- demo-otd
 - element1
 - field1
 - field2
 - element2
 - field3
 - field4
 - field5

The delimiter list for this Message Library will be specified on the demo-otd element, so that it applies to the entire Message Library, and will have two levels:

Level 1

- Delimiter |

Level 2

- Delimiter ^

The Level 1 delimiter applies to the two elements and field 5, and the Level 2 delimiter applies to fields 1 through 4.

Delimiter lists can be much more complex than this very simple example. For instance, you can create multiple delimiters of different types at any given level, and you can specify a delimiter list on any node within the Message Library—not only the Root node as shown in the example. See [“Modifying a Message Library Using the Message Library Editor” on page 13](#) for a description of the procedure for creating a Delimiter List.

Delimiter Properties

Delimiters are defined using the Delimiter List Editor. The Delimiter properties and values are displayed in the following.

TABLE 1 Delimiter Properties

Delimiter Properties and Value Options		
Property	Option	Description
Level		Child level beneath defining node.
Type	escape	Escape sequence.
	repeat	Array delimiter/separator.

TABLE 1 Delimiter Properties (Continued)

Delimiter Properties and Value Options		
Property	Option	Description
	normal	Terminator.
Delimiter Bytes		Delimiter (single or multiple characters).
Precedence		See Precedence.
Optional Mode	never	Do not allow on input, do not emit on output (empty field between delimiters implies zero length data field).
	allow	Skip empty field if present; if absent, do not delimit on output.
	cheer	Skip empty field if present; if absent, do delimit on output.
	force	Require empty, delimited field on input; always delimit on output.
Terminator Mode	never	Do not allow on input, do not emit on output (pure separator).
	allow	Allow on input, do not emit on output.
	cheer	Allow on input, always emit on output.
	force	Require on input, always emit on output (pure terminator).

Type Property - Escape Option

An escape delimiter is simply a sequence that will be recognized and ignored during parsing. Its purpose is to allow the use of escape sequences to embed byte sequences in data that would otherwise be seen as delimiter occurrences.

For example, if there is a normal delimiter “+” at a given level, and we define an escape delimiter “\+”, then **aaa+b\+c+ddd** will parse as three fields: **aaa**, **b\+c**, and **ddd**. If the escape delimiter were not defined, the sequence would then parse as four fields: **aaa**, **b**, **c**, and **ddd**.

If there is only an escape delimiter on a given level, however, it presents a no delimiter defined situation for `delim` and `array` nodes.

Delimiter Bytes

There is essentially no limitation on what characters you can use as delimiters; however, you obviously want to avoid characters that can be confused with data or interfere with escape sequences. The backslash (\) is normally used as an escape character. The HL7 protocol uses a double backslash as part of an escape sequence that provides special text formatting instructions.

Note – You should avoid using a colon (:) as a delimiter character, since it is used as a literal in system-generated time strings. This can interfere with recovery procedures, for example following a Domain shutdown.

Terminator Mode Property

Consider the tree structure shown in the previous example, where the node **a** has a pipe (|) as its delimiter, the sub-node **b** has a tilde (~) as its delimiter, and sub-node **c** has an asterisk (*) as its delimiter.

Option	Input	Output
never	c	c
allow	c or c*	c
cheer	c or c*	c*
force	c*	c*

Optional Mode Property

Consider the tree structures shown in the figures, where the node **a** has a pipe (|) as its delimiter, and the sub-nodes **b**, **c**, and **d** all have asterisks (*) as their delimiters.

- **Example 1:** Sub-node **c** is optional. Sub-node **c** and sub-node **d** must have different values for the match parameter.

Option	Input	Output
never	b*d	b*d
allow	b**d	b*d
cheer	b**d	b**d
force	b**d	b**d

- **Example 2:** Both sub-node **c** and sub-node **d** are optional.

Option	Input	Output
never	b	b
allow	b , b* , or b**	b

Option	Input	Output
cheer	b , b* , or b**	b**
force	b**	b**

Precedence

Precedence indicates the priority of a certain delimiter, relative to the other delimiters. By default, all delimiters are at precedence 10, which means they are all considered the same; fixed fields are hard-coded at precedence 10. Delimiters on parent nodes are not considered when parsing the child fields; only the child's delimiter (or if it is a fixed field, its length).

Changing the precedence of a delimiter will cause them to be applied to the input data-stream in different ways. For example:

- Root node
 - element (type delim, delimiter = “^”, repeat)
 - field1 (type fixed, length = 5)
 - field2 (type fixed, length = 8, optional)

Although this will parse **”abcde12345678^zyxvuABCDEFGH’**, it will not parse the text **”abcde^zyxvuABCDEFGH’** even though the second fixed field is optional. The reason is that the element's delimiter is ignored within the fixed field because they have the same precedence. If you want the element's delimiter to be examined within the fixed field data, you must change its precedence, for example:

- Root node
 - element (type delim, delimiter = “^”, repeat, precedence = 11)
 - field1 (type fixed, length = 5)
 - field2 (type fixed, length = 8, optional)

This will successfully parse the text **”abcde^zyxvuABCDEFGH’**.

Using the Message Library Tester

The Message Library Tester allows you to simulate the operation of a Collaboration containing a specific Message Library, thereby checking the correctness of the library during the design phase. You can enter input data values, perform the unmarshal and marshal operations, and also manipulate the tree structure as a Collaboration might do by using the Add Instance and Delete Instance functions. By using these latter features, you can prepare an output data file that can then be used as an input data file for testing purposes.

Note – For selected Message Libraries, the Verbose option provides a trace of parsing actions during the unmarshal process to aid in debugging the library structure. Selecting the Verbose check box causes parsing information to appear on the Verbose panel. The format and content of the data display are library-specific.

▼ To use the Message Library Tester

- 1 Open a Message Library in the editor.
- 2 From the Message Library Editor toolbar, click Run Test.
This saves the currently displayed Message Library to the Repository and displays the Message Library Tester at the bottom of the Message Library Editor. The data display panel offers four different data display modes. The Input mode is selected by default.
- 3 You can provide the input test data either by clicking the Open File icon and selecting a data file, or by copying and pasting the data to the Message Library Tester data panel.
- 4 Perform any of the following test:
 - [“To Test Unmarshal Functionality” on page 31.](#)
 - [“To Test Data Marshal Functionality” on page 32.](#)

▼ To Test Unmarshal Functionality

- 1 Click the desired unmarshal command to unmarshal the data from the Input panel to the OTD tree.
The unmarshal options are:
 - Unmarshal
 - Unmarshal from Bytes
 - Unmarshal from String
- 2 To verify the unmarshal process, check the values of each element for correctness.
- 3 Save your input test data to a file for reuse by selecting the Input panel and clicking the Save icon.
- 4 If there are errors in your input data, the Status panel appears, displaying the appropriate error messages. Confirmation of correct operation is also reported.

▼ To Test Data Marshal Functionality

- 1 From the Message Library Tester, enter or change data values for each node in the Value column of the node table.

Use the Add/Delete Instance (+/-) buttons to add or remove instances where needed.

- 2 In the Input View Encoding field, select the output character encoding.

- 3 Click the desired marshal button to marshal (serialize) the data.

The output is displayed in the Output panel

The marshal options are:

- Marshal
- Marshal to Bytes
- Marshal to String

HL7 Message Library Methods

The HL7 Message Library provides an API that is available for you to use with your HL7 applications. The `HL7UtilityFunctions` class contains a number of Java methods that have been exposed to extend the functionality of the libraries. The utility functions are documented in the complete Javadocs for the HL7 Message Library. You can access the Javadocs in both HTML format and a downloadable ZIP file from <http://developers.sun.com/docs/javacaps/api/javadocs/index.jsp>.

HL7 Version 2.6 Message Library Structure

The following table describes the HL7 Version 2.6 Message Library.

HL7 2.6 Segment	HL7 Description
HL7_26_ADT_A03	ADT/ACK - Discharge/end visit
HL7_26_SIU_S13	SIU/ACK - Notification of appointment rescheduling
HL7_26_QBP_Z81	Dispense History
HL7_26_OMN_O07	OMN - Non-stock requisition order
HL7_26_RRE_O26	RRE - Pharmacy/Treatment Refill Authorization Acknowledgement
HL7_26_ADT_A01	ADT/ACK - Admit/visit notification

HL7 2.6 Segment	HL7 Description
HL7_26_QSX_J02	QX/ACK - Cancel subscription/acknowledge message
HL7_26_SRM_S05	SRM/SRR - Request appointment discontinuation
HL7_26_EHC_E21	Cancel Authorization Request
HL7_26_RSP_K25	RSP - Personnel Information by Segment Response
HL7_26_DFT_P03	DFT/ACK - Post detail financial transaction
HL7_26_PEX_P07	PEX - Unsolicited initial individual product experience report
HL7_26_MDM_T03	MDM/ACK - Document status change notification
HL7_26_RQA_I09	RQA/RPA - Request for modification to an authorization
HL7_26_SRR_S08	SRM/SRR - Request modification of service/resource on appointment
HL7_26_ADT_A37	ADT/ACK - Unlink patient information
HL7_26_ADT_A52	ADT/ACK - Cancel leave of absence for a patient
HL7_26_ADT_A22	ADT/ACK - Patient returns from a "leave of absence"
HL7_26_SIU_S24	SIU/ACK - Notification of opened ("unblocked") schedule time slot(s)
HL7_26_MFN_M14	MFN/MFK - Master file notification - site defined
HL7_26_ADT_A12	ADT/ACK - Cancel transfer
HL7_26_RRD_O14	RRD - Pharmacy/treatment dispense acknowledgment
HL7_26_PMU_B02	PMU/ACK - Update personnel record
HL7_26_RSP_E03	HealthCare Services Invoice Status
HL7_26_QBP_E03	HealthCare Services Invoice Status
HL7_26_MFN_M05	MFN/MFK - Patient location master file
HL7_26_ADT_A42	ADT/ACK - Merge visit - visit number
HL7_26_RSP_Z82	Dispense History (Response)
HL7_26_RCL_I06	RQC/RCL - Request/receipt of clinical data listing
HL7_26_PEX_P08	PEX - Unsolicited update individual product experience report
HL7_26_ADT_A39	ADT/ACK - Merge person - patient ID (for backward compatibility only)
HL7_26_ADT_A55	ADT/ACK - Cancel change attending doctor
HL7_26_ADT_A38	ADT/ACK - Cancel pre-admit

HL7 2.6 Segment	HL7 Description
HL7_26_OPU_R25	OPU - Unsolicited Population/Location-Based Laboratory Observation Message
HL7_26_SRM_S06	SRM/SRR - Request appointment deletion
HL7_26_ADT_A54	ADT/ACK - Change attending doctor
HL7_26_EAN_U09	EAN/ACK - Automated equipment notification
HL7_26_ADT_A06	ADT/ACK - Change an outpatient to an inpatient
HL7_26_SIU_S17	SIU/ACK - Notification of appointment deletion
HL7_26_ADT_A35	ADT/ACK - Merge patient information - account number only (for backward compatibility)
HL7_26_ACK	Version 2.6 HL7 Acknowledgment
HL7_26_PMU_B08	PMU/ACK - Revoke Certificate/Permission
HL7_26_MFN_M11	MFN/MFK - Test/calculated observations master file
HL7_26_RDY_Z80	Dispense Information (Response)
HL7_26_QBP_Q15	QBP - Query by parameter requesting an RDY display response
HL7_26_SRR_S03	SRM/SRR - Request appointment modification
HL7_26_QRY_Q26	ROR - Pharmacy/treatment order response
HL7_26_QBP_Q24	QBP - Allocate identifiers
HL7_26_MFK_M10	MFN/MFK - Test /observation batteries master file
HL7_26_ADT_A46	ADT/ACK - Change patient ID (for backward compatibility only)
HL7_26_ADT_A45	ADT/ACK - Move visit information - visit number
HL7_26_OUL_R23	OUL - Unsolicited Specimen Container Oriented Observation Message
HL7_26_SRR_S10	SRM/SRR - Request discontinuation of service/resource on appointment
HL7_26_MFN_M01	MFN/MFK - Master file not otherwise specified (for backward compatibility only)
HL7_26_RQA_I10	RQA/RPA - Request for re-submission of an authorization
HL7_26_SCN_S37	SCN/ACK - Notification of anti-microbial device cycle data
HL7_26_QBP_E22	Authorization Request Status
HL7_26_MFK_M07	MFN/MFK - Clinical study without phases but with schedules master file
HL7_26_RTБ_Z94	Tabular Dispense History (Response)

HL7 2.6 Segment	HL7 Description
HL7_26_ADT_A48	ADT/ACK - Change alternate patient ID (for backward compatibility only)
HL7_26_MDM_T06	MDM/ACK - Document addendum notification and content
HL7_26_MDM_T10	MDM/ACK - Document replacement notification and content
HL7_26_NMQ_N01	NMQ/NMR - Application management query message
HL7_26_INR_U06	INR/ACK - Automated equipment inventory request
HL7_26_RSP_K22	RSP - Find candidates response
HL7_26_MDM_T09	MDM/ACK - Document replacement notification
HL7_26_RSP_K24	RSP - Allocate identifiers response
HL7_26_SRM_S04	SRM/SRR - Request appointment cancellation
HL7_26_PMU_B03	PMU/ACK - Delete personnel record
HL7_26_ADT_A23	ADT/ACK - Delete a patient record
HL7_26_MFN_M05	MFN/MFK - Patient location master file
HL7_26_RTB_Z92	Who Am I (Response)
HL7_26_ADT_A30	ADT/ACK - Merge person information (for backward compatibility only)
HL7_26_CSU_C11	CSU - Patient completes a phase of the clinical trial
HL7_26_TCR_U11	TCR/ACK - Automated equipment test code settings request
HL7_26_ADT_A04	ADT/ACK - Register a patient
HL7_26_ADT_A26	ADT/ACK - Cancel pending transfer
HL7_26_ACK_var	null
HL7_26_ORU_R01	ORU/ACK - Unsolicited transmission of an observation message
HL7_26_OMI_O23	OMI - Imaging order
HL7_26_MFK_M17	DRG Master File Message
HL7_26_OML_O33	OML - Laboratory order for multiple orders related to a single specimen
HL7_26_PMU_B04	PMU/ACK - Active practicing person
HL7_26_CRM_C02	CRM - Cancel a patient registration on clinical trial (for clerical mistakes only)
HL7_26_RGR_RGR	Pharmacy/Treatment Dose Information
HL7_26_OMB_O27	OMB - Blood product order

HL7 2.6 Segment	HL7 Description
HL7_26_RQP_I04	RQD/RPI - Request for patient demographic data
HL7_26_ADT_A15	ADT/ACK - Pending transfer
HL7_26_BAR_P01	BAR/ACK - Add patient accounts
HL7_26_CRM_C03	CRM - Correct/update registration information
HL7_26_ORL_O34	ORL - Laboratory order response message to a multiple order related to single specification
HL7_26_DFT_P11	DFT/ACK - Post Detail Financial Transactions - New
HL7_26_INU_U05	INU/ACK - Automated equipment inventory update
HL7_26_QBP_Z93	Tabular Dispense History
HL7_26_PPT_PCL	PPT - PC/ pathway (goal-oriented) query response
HL7_26_RSP_K31	RSP - Dispense History Response
HL7_26_RPL_I02	RQI/RPL - Request/receipt of patient selection display list
HL7_26_RSP_E22	Authorization Request Status
HL7_26_MFN_M02	MFN/MFK - Master file - staff practitioner
HL7_26_VXR_V03	VXR - Vaccination record response
HL7_26_RSP_Z86	Pharmacy Information Comprehensive (Response)
HL7_26_RTB_Z76	Tabular Patient List (Response)
HL7_26_RPA_I09	RQA/RPA - Request for modification to an authorization
HL7_26_ADT_A05	ADT/ACK - Pre-admit a patient
HL7_26_ADT_A53	ADT/ACK - Cancel patient returns from a leave of absence
HL7_26_SIU_S22	SIU/ACK - Notification of deletion of service/resource on appointment
HL7_26_RSP_Z88	Dispense Information (Response)
HL7_26_RTB_K13	RTB - Tabular response in response to QBP^Q13
HL7_26_MDM_T08	MDM/ACK - Document edit notification and content
HL7_26_BPS_O29	BPS - Blood product dispense status
HL7_26_MFK_M12	MFN/MFK - Master file notification message
HL7_26_ROR_ROR	ROR - Pharmacy prescription order query response
HL7_26_RDS_O13	RDS - Pharmacy/treatment dispense

HL7 2.6 Segment	HL7 Description
HL7_26_EHC_E20	Submit Authorization Request
HL7_26_PIN_I07	PIN/ACK - Unsolicited insurance information
HL7_26_SIU_S18	SIU/ACK - Notification of addition of service/resource on appointment
HL7_26_ADT_A43	ADT/ACK - Move patient information - patient identifier list
HL7_26_ADT_A41	ADT/ACK - Merge account - patient account number
HL7_26_QBP_Q21	QBP - Get person demographics
HL7_26_ADT_A60	ADT/ACK - Update allergy information
HL7_26_MFN_M15	MFN/MFK - Inventory item master file notification
HL7_26_RAR_RAR	Pharmacy/Treatment Administration Information
HL7_26_OUL_R24	OUL - Unsolicited Order Oriented Observation Message
HL7_26_RPI_I04	RQD/RPI - Request for patient demographic data
HL7_26_ADT_A08	ADT/ACK - Update patient information
HL7_26_RSP_K21	RSP - Get person demographics response
HL7_26_MDM_T04	MDM/ACK - Document status change notification and content
HL7_26_EHC_E15	Payment/Remittance Advice
HL7_26_CRM_C05	CRM - Patient enters phase of clinical trial
HL7_26_EHC_E13	Additional Information Response
HL7_26_SRR_S07	SRM/SRR - Request addition of service/resource on appointment
HL7_26_RDE_O11	RDE - Pharmacy/treatment encoded order
HL7_26_MFN_M13	MFN/MFK - Master file notification - general
HL7_26_ORN_O08	ORN - Non-stock requisition acknowledgment
HL7_26_SSR_U04	SSR/ACK - specimen status request
HL7_26_ADT_A16	ADT/ACK - Pending discharge
HL7_26_OML_O21	OML - Laboratory order
HL7_26_MFN_M14	MFN/MFK - Master file notification - site defined
HL7_26_QBP_Q13	QBP - Query by parameter requesting an RTB - tabular response
HL7_26_OPR_O38	OPR - Population/Location-Based Laboratory Order Acknowledgment Message

HL7 2.6 Segment	HL7 Description
HL7_26_MFN_M06	MFN/MFK - Clinical study with phases and schedules master file
HL7_26_ORI_O24	ORI - Imaging order response message to any OMI
HL7_26_ORU_R32	ORU - Unsolicited Pre-Ordered Point-Of-Care Observation
HL7_26_ADT_A34	ADT/ACK - Merge patient information - patient ID only (for backward compatibility)
HL7_26_VXU_V04	VXU - Unsolicited vaccination record update
HL7_26_RRA_O18	RRA - Pharmacy/treatment administration acknowledgment
HL7_26_BAR_P10	BAR/ACK - Transmit Ambulatory Payment Classification (APC)
HL7_26_EAC_U07	EAC/ACK - Automated equipment command
HL7_26_RRE_O12	RRE - Pharmacy/treatment encoded order acknowledgment
HL7_26_BRT_O32	BRT - Blood product transfusion/disposition acknowledgment
HL7_26_PMU_B07	PMU/ACK - Grant Certificate/Permission
HL7_26_SRR_S05	SRM/SRR - Request appointment discontinuation
HL7_26_RQA_I11	RQA/RPA - Request for cancellation of an authorization
HL7_26_QRY_Q29	RER - Pharmacy/treatment encoded order information
HL7_26_PRR_PC5	PRR - PC/ problem response
HL7_26_ADT_A50	ADT/ACK - Change visit number
HL7_26_RPR_I03	RQI/RPR - Request/receipt of patient selection list
HL7_26_EAR_U08	EAR/ACK - Automated equipment response
HL7_26_PPR_PC2	PPR - PC/ problem update
HL7_26_PMU_B05	PMU/ACK - Deactivate practicing person
HL7_26_RGV_O15	RGV - Pharmacy/treatment given
HL7_26_CSU_C12	CSU - Update/correction of patient order/result information
HL7_26_ORL_O36	ORL - Laboratory order response message to a single container of a specimen OML
HL7_26_CRM_C08	CRM - Patient has gone off phase of clinical trial
HL7_26_MFN_M13	MFN/MFK - Master file notification - general
HL7_26_ADT_A24	ADT/ACK - Link patient information
HL7_26_SLN_S35	SLN/ACK - Notification of sterilization lot deletion

HL7 2.6 Segment	HL7 Description
HL7_26_ESR_U02	ESR/ACK - Automated equipment status request
HL7_26_MFK_M04	MFN/MFK - Master files charge description
HL7_26_RDE_O25	RDE - Pharmacy/treatment refill authorization request
HL7_26_RPA_I11	RQA/RPA - Request for cancellation of an authorization
HL7_26_RTB_Z78	Tabular Patient List (Response)
HL7_26_MFK_M08	MFN/MFK - Test/observation (numeric) master file
HL7_26_ORU_R30	ORU - Unsolicited Point-Of-Care Observation Message Without Existing Order - Placed
HL7_26_SRR_S04	SRM/SRR - Request appointment cancellation
HL7_26_SSU_U03	SSU/ACK - Specimen status update
HL7_26_SIU_S14	SIU/ACK - Notification of appointment modification
HL7_26_PGL_PC8	PGL - PC/ goal delete
HL7_26_VXX_V02	VXX - Response to vaccination query returning multiple PID matches
HL7_26_MFN_M04	MFN/MFK - Master files charge description
HL7_26_RSP_Znn	null
HL7_26_SIU_S15	SIU/ACK - Notification of appointment cancellation
HL7_26_PPP_PCB	PPP - PC/ pathway (problem-oriented) add
HL7_26_QBP_Z91	Who Am I
HL7_26_MDM_T11	MDM/ACK - Document cancel notification
HL7_26_OMS_O05	OMS - Stock requisition order
HL7_26_MFN_M10	MFN/MFK - Test /observation batteries master file
HL7_26_PPG_PCH	PPG - PC/ pathway (goal-oriented) update
HL7_26_QBP_Z97	Dispense History
HL7_26_NMD_N02	NMD/ACK - Application management data message (unsolicited)
HL7_26_SIU_S16	SIU/ACK - Notification of appointment discontinuation
HL7_26_QBP_Q25	QBP - Personnel Information by Segment Query
HL7_26_QBP_Z95	Tabular Dispense History
HL7_26_SRR_S11	SRM/SRR - Request deletion of service/resource on appointment

HL7 2.6 Segment	HL7 Description
HL7_26_MFN_M08	MFN/MFK - Test/observation (numeric) master file
HL7_26_QRY_Q27	RAR - Pharmacy/treatment administration information
HL7_26_QBP_Znn	null
HL7_26_ADT_A14	ADT/ACK - Pending admit
HL7_26_MFK_M02	MFN/MFK - Master file - staff practitioner
HL7_26_MFN_M17	DRG Master File Message
HL7_26_MFK_M09	MFN/MFK - Test/observation (categorical) master file
HL7_26_LSU_U12	LSU/ACK - Automated equipment log/service update
HL7_26_QRY_Q28	RDR - Pharmacy/treatment dispense information
HL7_26_RSP_Z90	Lab Results History (Response)
HL7_26_CSU_C09	CSU - Automated time intervals for reporting, like monthly
HL7_26_BTS_O31	BTS - Blood product transfusion/disposition
HL7_26_RQI_I01	RQI/RPI - Request for insurance information
HL7_26_VXQ_V01	VXQ - Query for vaccination record
HL7_26_ADT_A40	ADT/ACK - Merge patient - patient identifier list
HL7_26_DOC_T12	QRY/DOC - Document query
HL7_26_BAR_P06	BAR/ACK - End account
HL7_26_EHC_E02	Cancel HealthCare Services Invoice
HL7_26_RQI_I03	RQI/RPR - Request/receipt of patient selection list
HL7_26_ADT_A13	ADT/ACK - Cancel discharge/end visit
HL7_26_STI_S30	STI/STS - Request item
HL7_26_OML_O35	OML - Laboratory order for multiple orders related to a single container
HL7_26_PGL_PC7	PGL - PC/ goal update
HL7_26_ESU_U01	ESU/ACK - Automated equipment status update
HL7_26_PPR_PC3	PPR - PC/ problem delete
HL7_26_RPA_I08	RQA/RPA - Request for treatment authorization information
HL7_26_QCN_J01	QCN/ACK - Cancel query/acknowledge message
HL7_26_SQR_S25	SQM/SQR - Schedule query message and response

HL7 2.6 Segment	HL7 Description
HL7_26_SIU_S21	SIU/ACK - Notification of discontinuation of service/resource on appointment
HL7_26_ADT_A62	ADT/ACK - Cancel change consulting doctor
HL7_26_OUL_R22	OUL - Unsolicited Specimen Oriented Observation Message
HL7_26_SLR_S28	SLR/SLS - Request new sterilization lot
HL7_26_ADT_A18	ADT/ACK - Merge patient information (for backward compatibility only)
HL7_26_QBP_Z87	Dispense Information
HL7_26_ORU_R31	ORU - Unsolicited New Point-Of-Care Observation Message - Search For An Order
HL7_26_QBP_Z85	Pharmacy Information Comprehensive
HL7_26_SRM_S01	SRM/SRR - Request new appointment booking
HL7_26_SRM_S08	SRM/SRR - Request modification of service/resource on appointment
HL7_26_RTB_Z96	Tabular Dispense History (Response)
HL7_26_QRY_PCK	QRY - PC/ pathway (goal-oriented) query
HL7_26_SLR_S29	SLR/SLS - Request Sterilization lot deletion
HL7_26_RQA_I08	RQA/RPA - Request for treatment authorization information
HL7_26_OMP_O09	OMP - Pharmacy/treatment order
HL7_26_ORL_O22	ORL - General laboratory order response message to any OML
HL7_26_MFN_M15	MFN/MFK - Inventory item master file notification
HL7_26_SRM_S10	SRM/SRR - Request discontinuation of service/resource on appointment
HL7_26_PPP_PCC	PPP - PC/ pathway (problem-oriented) update
HL7_26_EHC_E01	Submit HealthCare Services Invoice
HL7_26_RQI_I02	RQI/RPL - Request/receipt of patient selection display list
HL7_26_CSU_C10	CSU - Patient completes the clinical trial
HL7_26_QBP_Z99	Who Am I
HL7_26_TCU_U10	TCU/ACK - Automated equipment test code settings update
HL7_26_RPA_I10	RQA/RPA - Request for re-submission of an authorization
HL7_26_PMU_B01	PMU/ACK - Add personnel record
HL7_26_RQC_I06	RQC/RCL - Request/receipt of clinical data listing

HL7 2.6 Segment	HL7 Description
HL7_26_SRR_S09	SRM/SRR - Request cancellation of service/resource on appointment
HL7_26_QRY_T12	QRY/DOC - Document query
HL7_26_SDR_S31	SDR/SDS - Request anti-microbial device data
HL7_26_MFK_M06	MFN/MFK - Clinical study with phases and schedules master file
HL7_26_SRM_S02	SRM/SRR - Request appointment rescheduling
HL7_26_SQM_S25	SQM/SQR - Schedule query message and response
HL7_26_PPV_PCA	PPV - PC/ goal response
HL7_26_ADT_A27	ADT/ACK - Cancel pending admit
HL7_26_RRI_I12	REF/RRI - Patient referral
HL7_26_RDY_K15	RDY - Display response in response to QBP^Q15
HL7_26_ADT_A33	ADT/ACK - Cancel patient departing - tracking
HL7_26_RQC_I05	RQC/RCI - Request for patient clinical information
HL7_26_ADT_A51	ADT/ACK - Change alternate visit ID
HL7_26_STC_S33	STC/ACK - Notification of sterilization configuration
HL7_26_MDM_T01	MDM/ACK - Original document notification
HL7_26_QSB_Q16	QSB - Create subscription
HL7_26_BRP_O30	BRP - Blood product dispense status acknowledgment
HL7_26_LSR_U13	LSR/ACK - Automated equipment log/service request
HL7_26_CRM_C04	CRM - Patient has gone off a clinical trial
HL7_26_RDY_Z98	Dispense History (Response)
HL7_26_OMG_O19	OMG - General clinical order
HL7_26_ADT_A29	ADT/ACK - Delete person information
HL7_26_ADT_A32	ADT/ACK - Cancel patient arriving - tracking
HL7_26_QBP_Z73	Information about Phone Calls
HL7_26_PMU_B06	PMU/ACK - Terminate practicing person
HL7_26_MFN_M03	MFN/MFK - Master file - test/observation (for backward compatibility only)
HL7_26_ORM_O01	ORM - Order message (also RDE, RDS, RGV, RAS)

HL7 2.6 Segment	HL7 Description
HL7_26_RTБ_Z74	Information about Phone Calls (Response)
HL7_26_QRY_Q30	RGR - Pharmacy/treatment dose information
HL7_26_PGL_PC6	PGL - PC/ goal add
HL7_26_OMD_O03	OMD - Diet order
HL7_26_ADT_A17	ADT/ACK - Swap patients
HL7_26_BAR_P02	BAR/ACK - Purge patient accounts
HL7_26_MFK_M16	MFN/MFK - Master File Notification Inventory Item Enhanced
HL7_26_ADT_A28	ADT/ACK - Add person information
HL7_26_ADT_A02	ADT/ACK - Transfer a patient
HL7_26_MDM_T07	MDM/ACK - Document edit notification
HL7_26_ADT_A47	ADT/ACK - Change patient identifier list
HL7_26_QBP_Z75	Tabular Patient List
HL7_26_NMR_N01	NMQ/NMR - Application management query message
HL7_26_SRM_S11	SRM/SRR - Request deletion of service/resource on appointment
HL7_26_QBP_Z77	Tabular Patient List
HL7_26_SIU_S26	SIU/ACK Notification that patient did not show up for schedule appointment
HL7_26_MFK_M01	MFN/MFK - Master file not otherwise specified (for backward compatibility only)
HL7_26_ADT_A10	ADT/ACK - Patient arriving - tracking
HL7_26_PPG_PCG	PPG - PC/ pathway (goal-oriented) add
HL7_26_ADT_A44	ADT/ACK - Move account information - patient account number
HL7_26_QRY_PC4	QRY - PC/ problem query
HL7_26_SMD_S32	SMD/SMS - Request anti-microbial device cycle data
HL7_26_ADT_A11	ADT/ACK - Cancel admit/visit notification
HL7_26_ADT_A20	ADT/ACK - Bed status update
HL7_26_CRM_C06	CRM - Cancel patient entering a phase (clerical mistake)
HL7_26_SRR_S01	SRM/SRR - Request new appointment booking
HL7_26_ORP_O10	ORP - Pharmacy/treatment order acknowledgment

HL7 2.6 Segment	HL7 Description
HL7_26_ORF_R04	ORF - Response to query; transmission of requested observation
HL7_26_QSB_Z83	ORU Subscription
HL7_26_RPI_I01	RQI/RPI - Request for insurance information
HL7_26_SIU_S19	SIU/ACK - Notification of modification of service/resource on appointment
HL7_26_ORO_O06	ORS - Stock requisition acknowledgment
HL7_26_QBP_Z79	Dispense Information
HL7_26_ADT_A25	ADT/ACK - Cancel pending discharge
HL7_26_MDM_T02	MDM/ACK - Original document notification and content
HL7_26_QVR_Q17	QVR - Query for previous events
HL7_26_RSP_K11	RSP - Segment pattern response in response to QBP^Q11
HL7_26_OPL_O37	OPL - Population/Location-Based Laboratory Order Message
HL7_26_QBP_Q31	QBP Query Dispense history
HL7_26_SIU_S20	SIU/ACK - Notification of cancellation of service/resource on appointment
HL7_26_MFK_M03	MFN/MFK - Master file - test/observation (for backward compatibility only)
HL7_26_QRY_PC9	QRY - PC/ goal query
HL7_26_SIU_S23	SIU/ACK - Notification of blocked schedule time slot(s)
HL7_26_PPP_PCD	PPP - PC/ pathway (problem-oriented) delete
HL7_26_PPR_PC1	PPR - PC/ problem add
HL7_26_QBP_Q23	QBP - Get corresponding identifiers
HL7_26_RRG_O16	RRG - Pharmacy/treatment give acknowledgment
HL7_26_RCI_I05	RQC/RCI - Request for patient clinical information
HL7_26_EHC_E04	Re-Assess HealthCare Services Invoice Request
HL7_26_ADR_A19	QRY/ADR - Patient query
HL7_26_SUR_P09	SUR - Summary product experience report
HL7_26_QBP_Q22	QBP - Find candidates
HL7_26_SRM_S03	SRM/SRR - Request appointment modification

HL7 2.6 Segment	HL7 Description
HL7_26_CRM_C01	CRM - Register a patient on a clinical trial
HL7_26_MFK_M11	MFN/MFK - Test/calculated observations master file
HL7_26_SRR_S06	SRM/SRR - Request appointment deletion
HL7_26_ADT_A31	ADT/ACK - Update person information
HL7_26_QBP_Q11	QBP - Query by parameter requesting an RSP segment pattern response
HL7_26_CRM_C07	CRM - Correct/update phase information
HL7_26_ORB_O28	ORB - Blood product order acknowledgment
HL7_26_SRR_S02	SRM/SRR - Request appointment rescheduling
HL7_26_PPG_PCJ	PPG - PC/ pathway (goal-oriented) delete
HL7_26_ADT_A61	ADT/ACK - Change consulting doctor
HL7_26_SLN_S34	SLN/ACK - Notification of sterilization lot
HL7_26_OSR_Q06	OSQ/OSR - Query for order status
HL7_26_MFN_M09	MFN/MFK - Test/observation (categorical) master file
HL7_26_MDM_T05	MDM/ACK - Document addendum notification
HL7_26_OSQ_Q06	OSQ/OSR - Query for order status
HL7_26_ADT_A36	ADT/ACK - Merge patient information - patient ID and account number (for backwards)
HL7_26_MFN_M12	MFN/MFK - Master file notification message
HL7_26_RER_RER	Pharmacy/Treatment Encoded Order Information
HL7_26_SDN_S36	SDN/ACK - Notification of anti-microbial device data
HL7_26_PTR_PCF	PTR - PC/ pathway (problem-oriented) query response
HL7_26_QRY_R02	QRY - Query for results of observation
HL7_26_ORD_O04	ORD - Diet order acknowledgment
HL7_26_ORG_O20	ORG/ORL - General clinical order response
HL7_26_MFN_M07	MFN/MFK - Clinical study without phases but with schedules master file
HL7_26_RSP_K23	RSP - Get corresponding identifiers response
HL7_26_ADT_A09	ADT/ACK - Patient departing - tracking
HL7_26_EHC_E10	Edit/Adjudication Results

HL7 2.6 Segment	HL7 Description
HL7_26_RAS_O17	RAS - Pharmacy/treatment administration
HL7_26_ADT_A49	ADT/ACK - Change patient account number
HL7_26_EHC_E24	Authorization Response
HL7_26_RSP_Z84	Who Am I (Response)
HL7_26_ADT_A07	ADT/ACK - Change an inpatient to an outpatient
HL7_26_OUL_R21	OUL - Unsolicited laboratory observation
HL7_26_QRY_PCE	QRY - PC/ pathway (problem-oriented) query
HL7_26_REF_I12	REF/RRI - Patient referral
HL7_26_SRM_S09	SRM/SRR - Request cancellation of service/resource on appointment
HL7_26_EHC_E12	Request Additional Information
HL7_26_SRM_S07	SRM/SRR - Request addition of service/resource on appointment
HL7_26_BAR_P05	BAR/ACK - Update account
HL7_26_SIU_S12	SIU/ACK - Notification of new appointment booking
HL7_26_BAR_P12	BAR/ACK - Update Diagnosis/Procedure
HL7_26_MFN_M16	MFN/MFK - Master File Notification Inventory Item Enhanced
HL7_26_QBP_Z89	Lab Results History
HL7_26_QRY_A19	QRY/ADR - Patient query
HL7_26_ORR_O02	ORR - Order response (also RRE, RRD, RRG, RRA)
HL7_26_ADT_A21	ADT/ACK - Patient goes on a "leave of absence"

HL7 Version 2.5.1 Message Library Structure

The following table describes the HL7 Version 2.5.1 Message Library.

HL7 2.5.1. Segment	HL7 Description
HL7_251_ABS	Abstract
HL7_251_ACC	Accident
HL7_251_ACK	General Acknowledgment Message
HL7_251_ADR_A19	QRY/ADR - Patient query

HL7 2.5.1. Segment	HL7 Description
HL7_251_ADT_A01	ADT/ACK - Admit/visit notification
HL7_251_ADT_A02	ADT/ACK - Transfer a patient
HL7_251_ADT_A03	ADT/ACK - Discharge/end visit
HL7_251_ADT_A04	ADT/ACK - Register a patient
HL7_251_ADT_A05	ADT/ACK - Pre-admit a patient
HL7_251_ADT_A06	ADT/ACK - Change an outpatient to an inpatient
HL7_251_ADT_A07	ADT/ACK - Change an inpatient to an outpatient
HL7_251_ADT_A08	ADT/ACK - Update patient information
HL7_251_ADT_A09	ADT/ACK - Patient departing - tracking
HL7_251_ADT_A10	ADT/ACK - Patient arriving - tracking
HL7_251_ADT_A11	ADT/ACK - Cancel admit/visit notification
HL7_251_ADT_A12	ADT/ACK - Cancel transfer
HL7_251_ADT_A13	ADT/ACK - Cancel discharge/end visit
HL7_251_ADT_A14	ADT/ACK - Pending admit
HL7_251_ADT_A15	ADT/ACK - Pending transfer
HL7_251_ADT_A16	ADT/ACK - Pending discharge
HL7_251_ADT_A17	ADT/ACK - Swap patients
HL7_251_ADT_A18	ADT/ACK - Merge patient information (for backward compatibility only)
HL7_251_ADT_A20	ADT/ACK - Bed status update
HL7_251_ADT_A21	ADT/ACK - Patient goes on a leave of absence
HL7_251_ADT_A22	ADT/ACK - Patient returns from a leave of absence
HL7_251_ADT_A23	ADT/ACK - Delete a patient record
HL7_251_ADT_A24	ADT/ACK - Link patient information
HL7_251_ADT_A25	ADT/ACK - Cancel pending discharge
HL7_251_ADT_A26	ADT/ACK - Cancel pending transfer
HL7_251_ADT_A27	ADT/ACK - Cancel pending admit
HL7_251_ADT_A28	ADT/ACK - Add person information
HL7_251_ADT_A29	ADT/ACK - Delete person information

HL7 2.5.1. Segment	HL7 Description
HL7_251_ADT_A30	ADT/ACK - Merge person information (for backward compatibility only)
HL7_251_ADT_A31	ADT/ACK - Update person information
HL7_251_ADT_A32	ADT/ACK - Cancel patient arriving - tracking
HL7_251_ADT_A33	ADT/ACK - Cancel patient departing - tracking
HL7_251_ADT_A34	ADT/ACK - Merge patient information - patient ID only (for backward compatibility)
HL7_251_ADT_A35	ADT/ACK - Merge patient information - account number only (for backward compatibility)
HL7_251_ADT_A36	ADT/ACK - Merge patient information - patient ID and account number (for backwards)
HL7_251_ADT_A37	ADT/ACK - Unlink patient information
HL7_251_ADT_A38	ADT/ACK - Cancel pre-admit
HL7_251_ADT_A39	ADT/ACK - Merge person - patient ID (for backward compatibility only)
HL7_251_ADT_A40	ADT/ACK - Merge patient - patient identifier list
HL7_251_ADT_A41	ADT/ACK - Merge account - patient account number
HL7_251_ADT_A42	ADT/ACK - Merge visit - visit number
HL7_251_ADT_A43	ADT/ACK - Move patient information - patient identifier list
HL7_251_ADT_A44	ADT/ACK - Move account information - patient account number
HL7_251_ADT_A45	ADT/ACK - Move visit information - visit number
HL7_251_ADT_A46	ADT/ACK - Change patient ID (for backward compatibility only)
HL7_251_ADT_A47	ADT/ACK - Change patient identifier list
HL7_251_ADT_A48	ADT/ACK - Change alternate patient ID (for backward compatibility only)
HL7_251_ADT_A49	ADT/ACK - Change patient account number
HL7_251_ADT_A50	ADT/ACK - Change visit number
HL7_251_ADT_A51	ADT/ACK - Change alternate visit ID
HL7_251_ADT_A52	ADT/ACK - Cancel leave of absence for a patient
HL7_251_ADT_A53	ADT/ACK - Cancel patient returns from a leave of absence
HL7_251_ADT_A54	ADT/ACK - Change attending doctor
HL7_251_ADT_A55	ADT/ACK - Cancel change attending doctor

HL7 2.5.1. Segment	HL7 Description
HL7_251_ADT_A60	ADT/ACK - Update allergy information
HL7_251_ADT_A61	ADT/ACK - Change consulting doctor
HL7_251_ADT_A62	ADT/ACK - Cancel change consulting doctor
HL7_251_AFF	Professional Affiliation
HL7_251_AIG	Appointment Information_General Resource
HL7_251_AIL	Appointment Information_Location Resource
HL7_251_AIP	Appointment Information_Personnel Resource
HL7_251_AIS	Appointment Information
HL7_251_AL1	Patient Allergy Information
HL7_251_APR	Appointment Preferences
HL7_251_ARQ	Appointment Request
HL7_251_AUT	Authorization Information
HL7_251_BAR_P01	BAR/ACK - Add patient accounts
HL7_251_BAR_P02	BAR/ACK - Purge patient accounts
HL7_251_BAR_P05	BAR/ACK - Update account
HL7_251_BAR_P06	BAR/ACK - End account
HL7_251_BAR_P10	BAR/ACK - Transmit Ambulatory Payment Classification (APC)
HL7_251_BAR_P12	BAR/ACK - Update Diagnosis/Procedure
HL7_251_BLC	Blood Code
HL7_251_BLG	Billing
HL7_251_BPO	Blood product order
HL7_251_BPS_O29	BPS - Blood product dispense status
HL7_251_BPX	Blood Product Dispense Status
HL7_251_BRP_O30	BRP - Blood product dispense status acknowledgment
HL7_251_BRT_O32	BRT - Blood product transfusion/disposition acknowledgment
HL7_251_BTS_O31	BTS - Blood product transfusion/disposition
HL7_251_BTX	Batch Trailer
HL7_251_CDM	Charge Description Master

HL7 2.5.1. Segment	HL7 Description
HL7_251_CER	Certificate Detail
HL7_251_CM0	Clinical Study Master
HL7_251_CM1	Clinical Study Phase Master
HL7_251_CM2	Clinical Study Schedule Master
HL7_251_CNS	Clear Notification
HL7_251_CRM_C01	CRM - Register a patient on a clinical trial
HL7_251_CRM_C02	CRM - Cancel a patient registration on clinical trial (for clerical mistakes online)
HL7_251_CRM_C03	CRM - Correct/update registration information
HL7_251_CRM_C04	CRM - Patient has gone off a clinical trial
HL7_251_CRM_C05	CRM - Patient enters phase of clinical trial
HL7_251_CRM_C06	CRM - Cancel patient entering a phase (clerical mistake)
HL7_251_CRM_C07	CRM - Correct/update phase information
HL7_251_CRM_C08	CRM - Patient has gone off phase of clinical trial
HL7_251_CSP	Clinical Study Phase
HL7_251_CSR	Clinical Study Registration
HL7_251_CSS	Clinical Study Data Schedule Segment
HL7_251_CSU_C09	CSU - Automated time intervals for reporting, like monthly
HL7_251_CSU_C10	CSU - Patient completes the clinical trial
HL7_251_CSU_C11	CSU - Patient completes a phase of the clinical trial
HL7_251_CSU_C12	CSU - Update/correction of patient order/result information
HL7_251_CTD	Contact Data
HL7_251_CTI	Clinical Trial Identification
HL7_251_DB1	Disability
HL7_251_DFT_P03	DFT/ACK - Post detail financial transaction
HL7_251_DFT_P11	DFT/ACK - Post Detail Financial Transactions - New
HL7_251_DG1	Diagnosis
HL7_251_DOC_T12	QRY/DOC - Document query

HL7 2.5.1. Segment	HL7 Description
HL7_251_DRG	Diagnosis Related Group
HL7_251_DSC	Continuation Pointer
HL7_251_DSP	Display Data
HL7_251_EAC_U07	EAC/ACK - Automated equipment command
HL7_251_EAN_U09	EAN/ACK - Automated equipment notification
HL7_251_EAR_U08	EAR/ACK - Automated equipment response
HL7_251_ECD	Equipment Command
HL7_251_ECR	Equipment Command Response
HL7_251_EDU	Educational Detail
HL7_251_EQP	Equipment/log Service
HL7_251_EQU	Equipment Detail
HL7_251_ERR	Error
HL7_251_ESR_U02	ESR/ACK - Automated equipment status request
HL7_251_ESU_U01	ESU/ACK - Automated equipment status update
HL7_251_EVN	Event Type
HL7_251_FAC	-
HL7_251_FT1	Financial Transaction
HL7_251_GOL	Goal Detail
HL7_251_GP1	Grouping/Reimbursement - Visit
HL7_251_GP2	Grouping/Reimbursement - Procedure Line Item
HL7_251_GT1	Guarantor
HL7_251_IAM	Patient Adverse Reaction Information
HL7_251_IIM	Inventory Item Master
HL7_251_IN1	Insurance
HL7_251_IN2	Insurance Additional Information
HL7_251_IN3	Insurance Additional Information, Certification
HL7_251_INR_U06	INR/ACK - Automated equipment inventory request
HL7_251_INU_U05	INU/ACK - Automated equipment inventory update

HL7 2.5.1. Segment	HL7 Description
HL7_251_INV	Inventory Detail
HL7_251_IPC	Imaging Procedure Control Segment
HL7_251_ISD	Interaction Status Detail
HL7_251_LAN	Language Detail
HL7_251_LCC	Location Charge Code
HL7_251_LCH	Location Characteristic
HL7_251_LDP	Location Department
HL7_251_LOC	Location Identification
HL7_251_LRL	Location Relationship
HL7_251_LSR_U13	LSR/ACK - Automated equipment log/service request
HL7_251_LSU_U12	LSU/ACK - Automated equipment log/service update
HL7_251_MDM_T01	MDM/ACK - Original document notification
HL7_251_MDM_T02	MDM/ACK - Original document notification and content
HL7_251_MDM_T03	MDM/ACK - Document status change notification
HL7_251_MDM_T04	MDM/ACK - Document status change notification and content
HL7_251_MDM_T05	MDM/ACK - Document addendum notification
HL7_251_MDM_T06	MDM/ACK - Document addendum notification and content
HL7_251_MDM_T07	MDM/ACK - Document edit notification
HL7_251_MDM_T08	MDM/ACK - Document edit notification and content
HL7_251_MDM_T09	MDM/ACK - Document replacement notification
HL7_251_MDM_T10	MDM/ACK - Document replacement notification and content
HL7_251_MDM_T11	MDM/ACK - Document cancel notification
HL7_251_MFA	Master File Acknowledgment
HL7_251_MFE	Master File Entry
HL7_251_MFI	Master File Identification
HL7_251_MFK_M01	MFN/MFK - Master file not otherwise specified (for backward compatibility only)
HL7_251_MFK_M02	MFN/MFK - Master file - staff practitioner

HL7 2.5.1. Segment	HL7 Description
HL7_251_MFK_M03	MFN/MFK - Master file - test/observation (for backward compatibility only)
HL7_251_MFK_M04	MFN/MFK - Master files charge description
HL7_251_MFK_M05	MFN/MFK - Patient location master file
HL7_251_MFK_M06	MFN/MFK - Clinical study with phases and schedules master file
HL7_251_MFK_M07	MFN/MFK - Clinical study without phases but with schedules master file
HL7_251_MFK_M08	MFN/MFK - Test/observation (numeric) master file
HL7_251_MFK_M09	MFN/MFK - Test/observation (categorical) master file
HL7_251_MFK_M10	MFN/MFK - Test /observation batteries master file
HL7_251_MFK_M11	MFN/MFK - Test/calculated observations master file
HL7_251_MFK_M12	MFN/MFK - Master file notification message
HL7_251_MFK_M13	MFN/MFK - Master file notification - general
HL7_251_MFK_M14	MFN/MFK - Master file notification - site defined
HL7_251_MFK_M15	MFN/MFK - Inventory item master file notification
HL7_251_MFN_M01	MFN/MFK - Master file not otherwise specified (for backward compatibility only)
HL7_251_MFN_M02	MFN/MFK - Master file - staff practitioner
HL7_251_MFN_M03	MFN/MFK - Master file - test/observation (for backward compatibility only)
HL7_251_MFN_M04	MFN/MFK - Master files charge description
HL7_251_MFN_M05	MFN/MFK - Patient location master file
HL7_251_MFN_M06	MFN/MFK - Clinical study with phases and schedules master file
HL7_251_MFN_M07	MFN/MFK - Clinical study without phases but with schedules master file
HL7_251_MFN_M08	MFN/MFK - Test/observation (numeric) master file
HL7_251_MFN_M09	MFN/MFK - Test/observation (categorical) master file
HL7_251_MFN_M10	MFN/MFK - Test /observation batteries master file
HL7_251_MFN_M11	MFN/MFK - Test/calculated observations master file
HL7_251_MFN_M12	MFN/MFK - Master file notification message
HL7_251_MFN_M13	MFN/MFK - Master file notification - general

HL7 2.5.1. Segment	HL7 Description
HL7_251_MFN_M14	MFN/MFK - Master file notification - site defined
HL7_251_MFN_M15	MFN/MFK - Inventory item master file notification
HL7_251_MFQ_M01	MFN/MFK - Master file not otherwise specified (for backward compatibility only)
HL7_251_MFQ_M02	MFN/MFK - Master file - staff practitioner
HL7_251_MFQ_M03	MFN/MFK - Master file - test/observation (for backward compatibility only)
HL7_251_MFQ_M04	MFN/MFK - Master files charge description
HL7_251_MFQ_M05	MFN/MFK - Patient location master file
HL7_251_MFQ_M06	MFN/MFK - Clinical study with phases and schedules master file
HL7_251_MFQ_M07	MFN/MFK - Clinical study without phases but with schedules master file
HL7_251_MFQ_M08	MFN/MFK - Test/observation (numeric) master file
HL7_251_MFQ_M09	MFN/MFK - Test/observation (categorical) master file
HL7_251_MFQ_M10	MFN/MFK - Test /observation batteries master file
HL7_251_MFQ_M11	MFN/MFK - Test/calculated observations master file
HL7_251_MFQ_M12	MFN/MFK - Master file notification message
HL7_251_MFQ_M13	MFN/MFK - Master file notification - general
HL7_251_MFQ_M14	MFN/MFK - Master file notification - site defined
HL7_251_MFR_M01	MFN/MFK - Master file not otherwise specified (for backward compatibility only)
HL7_251_MFR_M02	MFN/MFK - Master file - staff practitioner
HL7_251_MFR_M03	MFN/MFK - Master file - test/observation (for backward compatibility only)
HL7_251_MFR_M04	MFN/MFK - Master files charge description
HL7_251_MFR_M05	MFN/MFK - Patient location master file
HL7_251_MFR_M06	MFN/MFK - Clinical study with phases and schedules master file
HL7_251_MFR_M07	MFN/MFK - Clinical study without phases but with schedules master file
HL7_251_MFR_M08	MFN/MFK - Test/observation (numeric) master file
HL7_251_MFR_M09	MFN/MFK - Test/observation (categorical) master file
HL7_251_MFR_M10	MFN/MFK - Test /observation batteries master file

HL7 2.5.1. Segment	HL7 Description
HL7_251_MFR_M11	MFN/MFK - Test/calculated observations master file
HL7_251_MFR_M12	MFN/MFK - Master file notification message
HL7_251_MFR_M13	MFN/MFK - Master file notification - general
HL7_251_MFR_M14	MFN/MFK - Master file notification - site defined
HL7_251_MRG	Merge Patient Information
HL7_251_MSA	Message Acknowledgment
HL7_251_MSH	Message Header
HL7_251_NCK	System Clock
HL7_251_NDS	Notification Detail
HL7_251_NK1	Next of Kin/Associated Parties
HL7_251_NMD_N02	NMD/ACK - Application management data message (unsolicited)
HL7_251_NMQ_N01	NMQ/NMR - Application management query message
HL7_251_NMR_N01	NMQ/NMR - Application management query message
HL7_251_NPU	Bed Status Update
HL7_251_NSC	Application Status Update
HL7_251_NST	Application Control Level Statistics
HL7_251_NTE	Notes and Comments
HL7_251_OBR	Observation Request
HL7_251_OBX	Observation Result
HL7_251_ODS	Dietary Orders, Supplements, and Preferences
HL7_251_ODT	Diet Tray Instructions
HL7_251_OM1	General Segment
HL7_251_OM2	Numeric Observation
HL7_251_OM3	Categorical Service/Test/Observation
HL7_251_OM4	Observations that Require Specimens
HL7_251_OM5	Observation Batteries (Sets)
HL7_251_OM6	Observations that are Calculated from Other Observations
HL7_251_OM7	Additional Basic Attributes

HL7 2.5.1. Segment	HL7 Description
HL7_251_OMB_O27	OMB - Blood product order
HL7_251_OMD_O03	OMD - Diet order
HL7_251_OMG_O19	OMG - General clinical order
HL7_251_OMI_O23	OMI - Imaging order
HL7_251_OML_O21	OML - Laboratory order
HL7_251_OML_O33	OML - Laboratory order for multiple orders related to a single specimen
HL7_251_OML_O35	OML - Laboratory order for multiple orders related to a single container of a species
HL7_251_OMN_O07	OMN - Non-stock requisition order
HL7_251_OMP_O09	OMP - Pharmacy/treatment order
HL7_251_OMS_O05	OMS - Stock requisition order
HL7_251_ORB_O28	ORB - Blood product order acknowledgment
HL7_251_ORC	Common Order
HL7_251_ORD_O04	ORD - Diet order acknowledgment
HL7_251_ORF_R04	ORF - Response to query; transmission of requested observation
HL7_251_ORG	General Clinical Order Acknowledgment Message
HL7_251_ORG_O20	ORG/ORL - General clinical order response
HL7_251_ORI_O24	ORI - Imaging order response message to any OMI
HL7_251_ORL_O22	ORL - General laboratory order response message to any OML
HL7_251_ORL_O34	ORL - Laboratory order response message to a multiple order related to single species
HL7_251_ORL_O36	ORL - Laboratory order response message to a single container of a specimen OML
HL7_251_ORM_O01	ORM - Order message (also RDE, RDS, RGV, RAS)
HL7_251_ORN_O08	ORN - Non-stock requisition acknowledgment
HL7_251_ORP_O10	ORP - Pharmacy/treatment order acknowledgment
HL7_251_ORR_O02	ORR - Order response (also RRE, RRD, RRG, RRA)
HL7_251_ORS_O06	ORS - Stock requisition acknowledgment
HL7_251_ORU_R01	ORU/ACK - Unsolicited transmission of an observation message

HL7 2.5.1. Segment	HL7 Description
HL7_251_ORU_R30	ORU - Unsolicited Point-Of-Care Observation Message Without Existing Order
HL7_251_ORU_R31	ORU - Unsolicited New Point-Of-Care Observation Message - Search For An Order
HL7_251_ORU_R32	ORU - Unsolicited Pre-Ordered Point-Of-Care Observation
HL7_251_OSQ_Q06	OSQ/OSR - Query for order status
HL7_251_OSR_Q06	OSQ/OSR - Query for order status
HL7_251_OUL_R21	OUL - Unsolicited laboratory observation
HL7_251_OUL_R22	OUL - Unsolicited Specimen Oriented Observation Message
HL7_251_OUL_R23	OUL - Unsolicited Specimen Container Oriented Observation Message
HL7_251_OUL_R24	OUL - Unsolicited Order Oriented Observation Message
HL7_251_PCR	Possible Causal Relationship
HL7_251_PD1	Patient Additional Demographic
HL7_251_PDA	Patient Death and Autopsy
HL7_251_PDC	-
HL7_251_PEO	Product Experience Observation
HL7_251_PES	Product Experience Sender
HL7_251_PEX_P07	PEX - Unsolicited initial individual product experience report
HL7_251_PEX_P08	PEX - Unsolicited update individual product experience report
HL7_251_PGL_PC6	PGL - PC/ goal address
HL7_251_PGL_PC7	PGL - PC/ goal update
HL7_251_PGL_PC8	PGL - PC/ goal delete
HL7_251_PID	Patient Identification
HL7_251_PIN_I07	PIN/ACK - Unsolicited insurance information
HL7_251_PMU_B01	PMU/ACK - Add personnel record
HL7_251_PMU_B02	PMU/ACK - Update personnel record
HL7_251_PMU_B03	PMU/ACK - Delete personnel record
HL7_251_PMU_B04	PMU/ACK - Active practicing person
HL7_251_PMU_B05	PMU/ACK - Deactivate practicing person

HL7 2.5.1. Segment	HL7 Description
HL7_251_PMU_B06	PMU/ACK - Terminate practicing person
HL7_251_PMU_B07	PMU/ACK - Grant Certificate/Permission
HL7_251_PMU_B08	PMU/ACK - Revoke Certificate/Permission
HL7_251_PPG_PCG	PPG - PC/ pathway (goal-oriented) address
HL7_251_PPG_PCH	PPG - PC/ pathway (goal-oriented) update
HL7_251_PPG_PCJ	PPG - PC/ pathway (goal-oriented) delete
HL7_251_PPP_PCB	PPP - PC/ pathway (problem-oriented) address
HL7_251_PPP_PCC	PPP - PC/ pathway (problem-oriented) update
HL7_251_PPP_PCD	PPP - PC/ pathway (problem-oriented) delete
HL7_251_PPR_PC1	PPR - PC/ problem address
HL7_251_PPR_PC2	PPR - PC/ problem update
HL7_251_PPR_PC3	PPR - PC/ problem delete
HL7_251_PPT_PCL	PPT - PC/ pathway (goal-oriented) query response
HL7_251_PPV_PCA	PPV - PC/ goal response
HL7_251_PR1	Procedures
HL7_251_PRA	Practitioner Detail
HL7_251_PRB	Problem Details
HL7_251_PRC	Pricing
HL7_251_PRD	Provider Data
HL7_251_PRR_PC5	PRR - PC/ problem response
HL7_251_PTH	Pathway
HL7_251_PTR_PCF	PTR - PC/ pathway (problem-oriented) query response
HL7_251_PV1	Patient Visit
HL7_251_PV2	Patient Visit - Additional Information
HL7_251_QAK	Query Acknowledgment
HL7_251_QBP_Q11	QBP - Query by parameter requesting an RSP segment pattern response
HL7_251_QBP_Q13	QBP - Query by parameter requesting an RTB - tabular response
HL7_251_QBP_Q15	QBP - Query by parameter requesting an RDY display response

HL7 2.5.1. Segment	HL7 Description
HL7_251_QBP_Q21	QBP - Get person demographics
HL7_251_QBP_Q22	QBP - Find candidates
HL7_251_QBP_Q23	QBP - Get corresponding identifiers
HL7_251_QBP_Q24	QBP - Allocate identifiers
HL7_251_QBP_Q25	QBP - Personnel Information by Segment Query
HL7_251_QBP_Q31	DBP - Dispense History
HL7_251_QBP_Z73	Information about Phone Calls
HL7_251_QBP_Z75	Tabular Patient List
HL7_251_QBP_Z77	Tabular Patient List
HL7_251_QBP_Z79	Dispense Information
HL7_251_QBP_Z81	Dispense History
HL7_251_QBP_Z85	Pharmacy Information Comprehensive
HL7_251_QBP_Z87	Dispense Information
HL7_251_QBP_Z89	Lab Results History
HL7_251_QBP_Z91	Who Am I
HL7_251_QBP_Z93	Tabular Dispense History
HL7_251_QBP_Z95	Tabular Dispense History
HL7_251_QBP_Z97	Dispense History
HL7_251_QBP_Z99	Who Am I
HL7_251_QCN_J01	QCN/ACK - Cancel query/acknowledge message
HL7_251_QID	Query Identification
HL7_251_QPD	Query Parameter Definition
HL7_251_QRD	Original-Style Query Definition
HL7_251_QRF	Original style query filter
HL7_251_QRI	Query Response Instance
HL7_251_QRY_A19	QRY/ADR - Patient query
HL7_251_QRY_PC4	QRY - PC/ problem query
HL7_251_QRY_PC9	QRY - PC/ goal query

HL7 2.5.1. Segment	HL7 Description
HL7_251_QRY_PCE	QRY - PC/ pathway (problem-oriented) query
HL7_251_QRY_PCK	QRY - PC/ pathway (goal-oriented) query
HL7_251_QRY_Q26	ROR - Pharmacy/treatment order response
HL7_251_QRY_Q27	RAR - Pharmacy/treatment administration information
HL7_251_QRY_Q28	RDR - Pharmacy/treatment dispense information
HL7_251_QRY_Q29	RER - Pharmacy/treatment encoded order information
HL7_251_QRY_Q30	RGR - Pharmacy/treatment dose information
HL7_251_QRY_R02	QRY - Query for results of observation
HL7_251_QRY_T12	QRY/DOC - Document query
HL7_251_QSB_Q16	QSB - Create subscription
HL7_251_QSB_Z83	ORU Subscription
HL7_251_QSX_J02	QSX/ACK - Cancel subscription/acknowledge message
HL7_251_QVR_Q17	QVR - Query for previous events
HL7_251_RAR_RAR	Pharmacy/Treatment Administration Information
HL7_251_RAS_O17	RAS - Pharmacy/treatment administration
HL7_251_RCI_I05	RQC/RCI - Request for patient clinical information
HL7_251_RCL_I06	RQC/RCL - Request/receipt of clinical data listing
HL7_251_RCP	Response Control Parameter
HL7_251_RDE_O11	RDE - Pharmacy/treatment encoded order
HL7_251_RDE_O25	RDE - Pharmacy/treatment refill authorization request
HL7_251_RDF	Table Row Definition
HL7_251_RDR_RDR	Pharmacy/treatment Dispense Information
HL7_251_RDS_O13	RDS - Pharmacy/treatment dispense
HL7_251_RDT	Table Row Data
HL7_251_RDY_K15	RDY - Display response in response to QBP^Q15
HL7_251_RDY_Z80	Dispense Information (Response)
HL7_251_RDY_Z98	Dispense History (Response)
HL7_251_REF_I12	REF/RRI - Patient referral

HL7 2.5.1. Segment	HL7 Description
HL7_251_REF_I13	REF/RRI - Modify patient referral
HL7_251_REF_I14	REF/RRI - Cancel patient referral
HL7_251_REF_I15	REF/RRI - Request patient referral status
HL7_251_RER_RER	Pharmacy/Treatment Encoded Order Information
HL7_251_RF1	Referral Information
HL7_251_RGR_RGR	Pharmacy/Treatment Dose Information
HL7_251_RGS	Resource Group
HL7_251_RGV_O15	RGV - Pharmacy/treatment given
HL7_251_RMI	Risk Management Incident
HL7_251_ROL	Role
HL7_251_ROR_ROR	ROR - Pharmacy prescription order query response
HL7_251_RPA_I08	RQA/RPA - Request for treatment authorization information
HL7_251_RPA_I09	RQA/RPA - Request for modification to an authorization
HL7_251_RPA_I10	RQA/RPA - Request for re-submission of an authorization
HL7_251_RPA_I11	RQA/RPA - Request for cancellation of an authorization
HL7_251_RPI_I01	RQI/RPI - Request for insurance information
HL7_251_RPI_I04	RQD/RPI - Request for patient demographic data
HL7_251_RPL_I02	RQI/RPL - Request/receipt of patient selection display list
HL7_251_RPR_I03	RQI/RPR - Request/receipt of patient selection list
HL7_251_RQ1	Requisition Detail-1
HL7_251_RQA_I08	RQA/RPA - Request for treatment authorization information
HL7_251_RQA_I09	RQA/RPA - Request for modification to an authorization
HL7_251_RQA_I10	RQA/RPA - Request for re-submission of an authorization
HL7_251_RQA_I11	RQA/RPA - Request for cancellation of an authorization
HL7_251_RQC_I05	RQC/RCI - Request for patient clinical information
HL7_251_RQC_I06	RQC/RCL - Request/receipt of clinical data listing
HL7_251_RQD	Requisition Detail
HL7_251_RQI_I01	RQI/RPI - Request for insurance information

HL7 2.5.1. Segment	HL7 Description
HL7_251_RQI_I02	RQI/RPL - Request/receipt of patient selection display list
HL7_251_RQI_I03	RQI/RPR - Request/receipt of patient selection list
HL7_251_RQP_I04	RQD/RPI - Request for patient demographic data
HL7_251_RRA_O18	RRA - Pharmacy/treatment administration acknowledgment
HL7_251_RRD_O14	RRD - Pharmacy/treatment dispense acknowledgment
HL7_251_RRE_O12	RRE - Pharmacy/treatment encoded order acknowledgment
HL7_251_RRE_O26	RRE - Pharmacy/Treatment Refill Authorization Acknowledgement
HL7_251_RRG_O16	RRG - Pharmacy/treatment give acknowledgment
HL7_251_RRI_I12	REF/RRI - Patient referral
HL7_251_RRI_I13	REF/RRI - Modify patient referral
HL7_251_RRI_I14	REF/RRI - Cancel patient referral
HL7_251_RRI_I15	REF/RRI - Request patient referral status
HL7_251_RSP_K11	RSP - Segment pattern response in response to QBP^Q11
HL7_251_RSP_K21	RSP - Get person demographics response
HL7_251_RSP_K22	RSP - Find candidates response
HL7_251_RSP_K23	RSP - Get corresponding identifiers response
HL7_251_RSP_K24	RSP - Allocate identifiers response
HL7_251_RSP_K25	RSP - Personnel Information by Segment Response
HL7_251_RSP_K31	RSP - Dispense History
HL7_251_RSP_Z82	Dispense History (Response)
HL7_251_RSP_Z84	Who Am I (Response)
HL7_251_RSP_Z86	Pharmacy Information Comprehensive (Response)
HL7_251_RSP_Z88	Dispense Information (Response)
HL7_251_RSP_Z90	Lab Results History (Response)
HL7_251_RTb_K13	RTB - Tabular response in response to QBP^Q13
HL7_251_RTb_Z74	Information about Phone Calls (Response)
HL7_251_RTb_Z76	Tabular Patient List (Response)
HL7_251_RTb_Z78	Tabular Patient List (Response)

HL7 2.5.1. Segment	HL7 Description
HL7_251_RTБ_Z92	Who Am I (Response)
HL7_251_RTБ_Z94	Tabular Dispense History (Response)
HL7_251_RTБ_Z96	Tabular Dispense History (Response)
HL7_251_RXA	Pharmacy/Treatment Administration
HL7_251_RXC	Pharmacy/Treatment Component Order
HL7_251_RXD	Pharmacy/Treatment Dispense
HL7_251_RXE	Pharmacy/Treatment Encoded Order
HL7_251_RXG	Pharmacy/Treatment Give
HL7_251_RXO	Pharmacy/Treatment Order
HL7_251_RXR	Pharmacy/Treatment Route
HL7_251_SAC	Specimen Container detail
HL7_251_SCH	Scheduling Activity Information
HL7_251_SFT	Software Segment
HL7_251_SID	Substance Identifier
HL7_251_SIU_S12	SIU/ACK - Notification of new appointment booking
HL7_251_SIU_S13	SIU/ACK - Notification of appointment rescheduling
HL7_251_SIU_S14	SIU/ACK - Notification of appointment modification
HL7_251_SIU_S15	SIU/ACK - Notification of appointment cancellation
HL7_251_SIU_S16	SIU/ACK - Notification of appointment discontinuation
HL7_251_SIU_S17	SIU/ACK - Notification of appointment deletion
HL7_251_SIU_S18	SIU/ACK - Notification of addition of service/resource on appointment
HL7_251_SIU_S19	SIU/ACK - Notification of modification of service/resource on appointment
HL7_251_SIU_S20	SIU/ACK - Notification of cancellation of service/resource on appointment
HL7_251_SIU_S21	SIU/ACK - Notification of discontinuation of service/resource on appointment
HL7_251_SIU_S22	SIU/ACK - Notification of deletion of service/resource on appointment
HL7_251_SIU_S23	SIU/ACK - Notification of blocked schedule time slot(s)

HL7 2.5.1. Segment	HL7 Description
HL7_251_SIU_S24	SIU/ACK - Notification of opened (“unblocked”) schedule time slot(s)
HL7_251_SIU_S26	SIU/ACK Notification that patient did not show up for schedule appointment
HL7_251_SPM	Specimen
HL7_251_SQM_S25	SQM/SQR - Schedule query message and response
HL7_251_SQR_S25	SQM/SQR - Schedule query message and response
HL7_251_SRM_S01	SRM/SRR - Request new appointment booking
HL7_251_SRM_S02	SRM/SRR - Request appointment rescheduling
HL7_251_SRM_S03	SRM/SRR - Request appointment modification
HL7_251_SRM_S04	SRM/SRR - Request appointment cancellation
HL7_251_SRM_S05	SRM/SRR - Request appointment discontinuation
HL7_251_SRM_S06	SRM/SRR - Request appointment deletion
HL7_251_SRM_S07	SRM/SRR - Request addition of service/resource on appointment
HL7_251_SRM_S08	SRM/SRR - Request modification of service/resource on appointment
HL7_251_SRM_S09	SRM/SRR - Request cancellation of service/resource on appointment
HL7_251_SRM_S10	SRM/SRR - Request discontinuation of service/resource on appointment
HL7_251_SRM_S11	SRM/SRR - Request deletion of service/resource on appointment
HL7_251_SRR_S01	SRM/SRR - Request new appointment booking
HL7_251_SRR_S02	SRM/SRR - Request appointment rescheduling
HL7_251_SRR_S03	SRM/SRR - Request appointment modification
HL7_251_SRR_S04	SRM/SRR - Request appointment cancellation
HL7_251_SRR_S05	SRM/SRR - Request appointment discontinuation
HL7_251_SRR_S06	SRM/SRR - Request appointment deletion
HL7_251_SRR_S07	SRM/SRR - Request addition of service/resource on appointment
HL7_251_SRR_S08	SRM/SRR - Request modification of service/resource on appointment
HL7_251_SRR_S09	SRM/SRR - Request cancellation of service/resource on appointment
HL7_251_SRR_S10	SRM/SRR - Request discontinuation of service/resource on appointment
HL7_251_SRR_S11	SRM/SRR - Request deletion of service/resource on appointment

HL7 2.5.1. Segment	HL7 Description
HL7_251_SSR_U04	SSR/ACK - specimen status request
HL7_251_SSU_U03	SSU/ACK - Specimen status update
HL7_251_STF	Staff Identification - Segment
HL7_251_SUR_P09	SUR - Summary product experience report
HL7_251_TCC	Test Code Configuration - Segment
HL7_251_TCD	Test Code Detail
HL7_251_TCR_U11	TCR/ACK - Automated equipment test code settings request
HL7_251_TCU_U10	TCU/ACK - Automated equipment test code settings update
HL7_251_TQ1	-
HL7_251_TQ2	Timing/Quantity Relationship
HL7_251_TXA	Transcription Document Header
HL7_251_UB1	UB82
HL7_251_UB2	UB92 Data
HL7_251_VAR	Unknown/Variance
HL7_251_VXQ_V01	VXQ - Query for vaccination record
HL7_251_VXR_V03	VXR - Vaccination record response
HL7_251_VXU_V04	VXU - Unsolicited vaccination record update
HL7_251_VXX_V02	VXX - Response to vaccination query returning multiple PID matches

HL7 Version 2.5 Message Library Structure

The following table describes the HL7 Version 2.5 Message Library.

HL7 2.5 Segment	HL7 Description
HL7_25_ABS	Abstract
HL7_25_ACC	Accident
HL7_25_ACK	General Acknowledgment Message
HL7_25_ADR_A19	ADT Response
HL7_25_ADT_A01	Admit/Visit Notification

HL7 2.5 Segment	HL7 Description
HL7_25_ADT_A02	Transfer a Patient
HL7_25_ADT_A03	Discharge/End Visit
HL7_25_ADT_A04	Register a Patient
HL7_25_ADT_A05	Pre- Admit a Patient
HL7_25_ADT_A06	Change an Outpatient to an Inpatient
HL7_25_ADT_A07	Change an Inpatient to an Outpatient
HL7_25_ADT_A08	Update Patient Information
HL7_25_ADT_A09	Patient Departing - Tracking
HL7_25_ADT_A10	Patient Arriving - Tracking
HL7_25_ADT_A11	Cancel Admit/Visit Notification
HL7_25_ADT_A12	Cancel Transfer
HL7_25_ADT_A13	Cancel Discharge/end visit
HL7_25_ADT_A14	Pending Admit
HL7_25_ADT_A15	Pending Transfer
HL7_25_ADT_A16	Pending Discharge
HL7_25_ADT_A17	Swap Patients
HL7_25_ADT_A18	Merge Patient Information
HL7_25_ADT_A20	Bed Status Update
HL7_25_ADT_A21	Patient Goes on a Leave of Absence
HL7_25_ADT_A22	Patient Returns from a Leave of Absence
HL7_25_ADT_A23	Delete a Patient Record
HL7_25_ADT_A24	Link Patient Information
HL7_25_ADT_A25	Cancel Pending Discharge
HL7_25_ADT_A26	Cancel Pending Transfer
HL7_25_ADT_A27	Cancel Pending Admit
HL7_25_ADT_A28	Add Person or Patient Information
HL7_25_ADT_A29	Delete Person Information
HL7_25_ADT_A30	Merge Person Information

HL7 2.5 Segment	HL7 Description
HL7_25_ADT_A31	Update Person Information
HL7_25_ADT_A32	Cancel Patient Arriving - Tracking
HL7_25_ADT_A33	Cancel Patient Departing - Tracking
HL7_25_ADT_A34	Merge Patient Information - Patient ID Only
HL7_25_ADT_A35	Merge Patient Information - Account Number Only
HL7_25_ADT_A36	Merge Patient Information - Patient ID & Account Number
HL7_25_ADT_A37	Unlink Patient Information
HL7_25_ADT_A38	Cancel Pre-Admit
HL7_25_ADT_A39	Merge Patient - Patient ID
HL7_25_ADT_A40	Merge Patient - Patient Identifier List
HL7_25_ADT_A41	Merge Account - Patient Account Number
HL7_25_ADT_A42	Merge Visit - Visit Number
HL7_25_ADT_A43	Move Patient Information - Patient Identifier List
HL7_25_ADT_A44	Move Account Information - Patient Account Number
HL7_25_ADT_A45	Move Visit Information - Visit Number
HL7_25_ADT_A46	Change Patient ID
HL7_25_ADT_A47	Change Patient Identifier List
HL7_25_ADT_A48	Change Alternate
HL7_25_ADT_A49	Change Patient Account Number
HL7_25_ADT_A50	Change Visit Number
HL7_25_ADT_A51	Change Alternate Visit ID
HL7_25_ADT_A52	Cancel Leave of Absence for a Patient
HL7_25_ADT_A53	Cancel Patient Returns from a Leave of Absence
HL7_25_ADT_A54	Change Attending Doctor
HL7_25_ADT_A55	Cancel Change Attending Doctor
HL7_25_ADT_A60	Update Adverse Reaction Information
HL7_25_ADT_A61	Change Consulting Doctor
HL7_25_ADT_A62	Cancel Change Consulting Doctor

HL7 2.5 Segment	HL7 Description
HL7_25_AFF	Professional Affiliation
HL7_25_AIG	Appointment Information_General Resource
HL7_25_AIL	Appointment Information_Location Resource
HL7_25_AIP	Appointment Information_Personnel Resource
HL7_25_AIS	Appointment Information
HL7_25_AL1	Patient Allergy Information
HL7_25_APR	Appointment Preferences
HL7_25_ARQ	Appointment Request
HL7_25_AUT	Authorization Information
HL7_25_BAR_P01	Add Patient Account
HL7_25_BAR_P02	Purge Patient Accounts
HL7_25_BAR_P05	Update Account
HL7_25_BAR_P06	End Account
HL7_25_BAR_P10	Transmit Ambulatory Payment Classification (APC) Groups
HL7_25_BAR_P12	Update Diagnosis Procedure
HL7_25_BLC	Blood Code
HL7_25_BLG	Billing
HL7_25_BPO	Blood product order
HL7_25_BPS_O29	Blood Product Dispense Status Message
HL7_25_BPX	Blood Product Dispense Status
HL7_25_BRP_O30	Blood Product Dispense Status Acknowledgment
HL7_25_BRT_O32	Blood Product Transfusion/Disposition Acknowledgement
HL7_25_BTS_O31	Blood Product Transfusion/Disposition Message
HL7_25_BTX	Batch Trailer
HL7_25_CDM	Charge Description Master
HL7_25_CER	Certificate Detail
HL7_25_CMO	Clinical Study Master
HL7_25_CM1	Clinical Study Phase Master

HL7 2.5 Segment	HL7 Description
HL7_25_CM2	Clinical Study Schedule Master
HL7_25_CNS	Clear Notification
HL7_25_CRM_C01	Register a Patient on a Clinical Trial
HL7_25_CRM_C02	Cancel a Patient Registration on Clinical Trial
HL7_25_CRM_C03	Correct/Update Registration Information
HL7_25_CRM_C04	Patient has Gone Off a Clinical Trial
HL7_25_CRM_C05	Patient Enters Phase of Clinical Trial
HL7_25_CRM_C06	Cancel Patient Entering a Phase
HL7_25_CRM_C07	Correct/Update Phase Information
HL7_25_CRM_C08	Patient has Gone Off Phase of Clinical Trial
HL7_25_CSP	Clinical Study Phase
HL7_25_CSR	Clinical Study Registration
HL7_25_CSS	Clinical Study Data Schedule Segment
HL7_25_CSU_C09	Automated Time Intervals for Reporting, Like Monthly
HL7_25_CSU_C10	Patient Completes the Clinical Trial
HL7_25_CSU_C11	Patient Completes a Phase of the Clinical Trial
HL7_25_CSU_C12	Update/Correction of Patient Order/Result Information
HL7_25_CTD	Contact Data
HL7_25_CTI	Clinical Trial Identification
HL7_25_DB1	Disability
HL7_25_DFT_P03	Post Detail Financial Transactions
HL7_25_DFT_P11	Post Detail Financial Transactions - Expanded
HL7_25_DG1	Diagnosis
HL7_25_DOC_T12	Document Query
HL7_25_DRG	Diagnosis Related Group
HL7_25_DSC	Continuation Pointer
HL7_25_DSP	Display Data
HL7_25_EAC_U07	Automated Equipment Command

HL7 2.5 Segment	HL7 Description
HL7_25_EAN_U09	Automated Equipment Notification
HL7_25_EAR_U08	Automated Equipment Response
HL7_25_ECD	Equipment Command
HL7_25_ECR	Equipment Command Response
HL7_25_EDU	Educational Detail
HL7_25_EQP	Equipment/log Service
HL7_25_EQU	Equipment Detail
HL7_25_ERR	Error
HL7_25_ESR_U02	Automated Equipment Status Request
HL7_25_ESU_U01	Automated Equipment Status Update
HL7_25_EVN	Event Type
HL7_25_FT1	Financial Transaction
HL7_25_GOL	Goal Detail
HL7_25_GP1	Grouping/Reimbursement - Visit
HL7_25_GP2	Grouping/Reimbursement - Procedure Line Item
HL7_25_GT1	Guarantor
HL7_25_IAM	Patient Adverse Reaction Information
HL7_25_IIM	Inventory Item Master
HL7_25_IN1	Insurance
HL7_25_IN2	Insurance Additional Information
HL7_25_IN3	Insurance Additional Information, Certification
HL7_25_INR_U06	Automated Equipment Inventory Request
HL7_25_INU_U05	Automated Equipment Inventory Update
HL7_25_INV	Inventory Detail
HL7_25_IPC	Imaging Procedure Control Segment
HL7_25_ISD	Interaction Status Detail
HL7_25_LAN	Language Detail
HL7_25_LCC	Location Charge Code

HL7 2.5 Segment	HL7 Description
HL7_25_LCH	Location Characteristic
HL7_25_LDP	Location Department
HL7_25_LOC	Location Identification
HL7_25_LRL	Location Relationship
HL7_25_LSR_U13	Automated Equipment Log/Service Request
HL7_25_LSU_U12	Automated Equipment Log Service Update
HL7_25_MDM_T01	Original Document Notification
HL7_25_MDM_T02	Original Document Notification and Content
HL7_25_MDM_T03	Document Status Change Notification
HL7_25_MDM_T04	Document Status Change Notification and Content
HL7_25_MDM_T05	Document Addendum Notification
HL7_25_MDM_T06	Document Addendum Notification and Content
HL7_25_MDM_T07	Document Edit Notification
HL7_25_MDM_T08	Document Edit Notification and Content
HL7_25_MDM_T09	Document Replacement Notification
HL7_25_MDM_T10	Document Replacement Notification and Content
HL7_25_MDM_T11	Document Cancel Notification
HL7_25_MFA	Master File Acknowledgment
HL7_25_MFE	Master File Entry
HL7_25_MFI	Master File Identification
HL7_25_MFK_M01	Master FFile Not Otherwise Specified
HL7_25_MFK_M02	Master File - Staff Practitioner
HL7_25_MFK_M03	Master File - Test/Observation (Backward Compatibility)
HL7_25_MFK_M04	Master Files Charge Description
HL7_25_MFK_M05	Patient Location Master File
HL7_25_MFK_M06	Clinical Study with Phases and Schedules Master File
HL7_25_MFK_M07	Clinical Study without Phases but with Schedules Master File
HL7_25_MFK_M08	Test/Observation (Numeric) Master File

HL7 2.5 Segment	HL7 Description
HL7_25_MFK_M09	Test/Observation (Categorical) Master File
HL7_25_MFK_M10	Test /Observation Batteries Master File
HL7_25_MFK_M11	Test/Calculated Observations Master File
HL7_25_MFK_M12	Master File Notification Message
HL7_25_MFK_M13	Master File Notification - General
HL7_25_MFK_M14	Master File Notification_Site Defined
HL7_25_MFK_M15	Inventory Item Master File Notification
HL7_25_MFN_M01	Master File Notification - Not Otherwise Specified (for backward compatibility only)
HL7_25_MFN_M02	Master File Notification - Staff/Practitioner
HL7_25_MFN_M03	Master File Notification - Test/Observation (for backward compatibility only)
HL7_25_MFN_M04	Master File Notification - Charge Description
HL7_25_MFN_M05	Master File Notification - Patient Location
HL7_25_MFN_M06	Master File Notification - Clinical Study with Phases and Schedules
HL7_25_MFN_M07	Master File Notification - Clinical Study Without Phases but with Schedules
HL7_25_MFN_M08	Master File Notification - Test/Observation (Numeric)
HL7_25_MFN_M09	Master File Notification - Test/Observation (Categorical)
HL7_25_MFN_M10	Master File Notification - Test/Observation Batteries
HL7_25_MFN_M11	Master File Notification - Test/Calculated Observations
HL7_25_MFN_M12	Master File Notification - Additional Basic Observation/Service Attributes
HL7_25_MFN_M13	Master File Notification - General
HL7_25_MFN_M14	Master File Notification - Site Defined
HL7_25_MFN_M15	Master File Notification- Inventory Item
HL7_25_MFQ_M01	Master Files Query - Not Otherwise Specified (for backward compatibility only)
HL7_25_MFQ_M02	Master Files Query - Staff/Practitioner
HL7_25_MFQ_M03	Master Files Query - Test/Observation (backward compatibility)
HL7_25_MFQ_M04	Master Files Query - Charge Description

HL7 2.5 Segment	HL7 Description
HL7_25_MFQ_M05	Master Files Query - Patient Location
HL7_25_MFQ_M06	Master Files Query - Clinical Study with Phases and Schedules
HL7_25_MFQ_M07	Master Files Query - Clinical study without phases but with schedules
HL7_25_MFQ_M08	Master Files Query - Test/Observation (Numeric)
HL7_25_MFQ_M09	Master Files Query - Test/Observation (Categorical)
HL7_25_MFQ_M10	Master Files Query - Test/Observation Batteries
HL7_25_MFQ_M11	Master Files Query - Test/Calculated Observations
HL7_25_MFQ_M12	Master Files Query - Additional Basic Observation/Service Attributes
HL7_25_MFQ_M13	Master Files Query - General
HL7_25_MFQ_M14	Master Files Query - Site Defined
HL7_25_MFR_M01	Master Files Response - Not Otherwise Specified (Backward Compatibility)
HL7_25_MFR_M02	Master Files Response - Staff Practitioner
HL7_25_MFR_M03	Master Files Response - Test/Observation (Backward Compatibility)
HL7_25_MFR_M04	Master Files Response - Charge Description
HL7_25_MFR_M05	Master Files Response - Patient Location
HL7_25_MFR_M06	Master Files Response - Clinical Study with Phases and Schedules
HL7_25_MFR_M07	Master Files Response - Clinical Study without Phases but with Schedules
HL7_25_MFR_M08	Master Files Response - Test/Observation (Numeric)
HL7_25_MFR_M09	Master Files Response - Test/Observation (Categorical) Master File
HL7_25_MFR_M10	Master Files Response - Test /Observation Batteries Master File
HL7_25_MFR_M11	Master Files Response - Test/Calculated Observations Master File
HL7_25_MFR_M12	Master Files Response - Master File Notification Message
HL7_25_MFR_M13	Master Files Response - Master File Notification - General
HL7_25_MFR_M14	Master Files Response - Master File Notification - Site Defined
HL7_25_MRG	Merge Patient Information
HL7_25_MSA	Message Acknowledgment
HL7_25_MSH	Message Header

HL7 2.5 Segment	HL7 Description
HL7_25_NCK	System Clock
HL7_25_NDS	Notification Detail
HL7_25_NK1	Next of Kin/Associated Parties
HL7_25_NMD_N02	Application Management Data Message
HL7_25_NMQ_N01	Application Management Query Message
HL7_25_NMR_N01	Application management response message
HL7_25_NPU	Bed Status Update
HL7_25_NSC	Application Status Update
HL7_25_NST	Application Control Level Statistics
HL7_25_NTE	Notes and Comments
HL7_25_OBR	Observation Request
HL7_25_OBX	Observation Result
HL7_25_ODS	Dietary Orders, Supplements, and Preferences
HL7_25_ODT	Diet Tray Instructions
HL7_25_OM1	General Segment
HL7_25_OM2	Numeric Observation
HL7_25_OM3	Categorical Service/Test/Observation
HL7_25_OM4	Observations that Require Specimens
HL7_25_OM5	Observation Batteries (Sets)
HL7_25_OM6	Observations that are Calculated from Other Observations
HL7_25_OM7	Additional Basic Attributes
HL7_25_OMB_O27	Blood Product Order Message
HL7_25_OMB_O03	Dietary Order
HL7_25_OMG_O19	General Clinical Order Message
HL7_25_OMI_O23	Imaging Order Message
HL7_25_OML_O21	Laboratory Order
HL7_25_OML_O33	Laboratory Order for Multiple Orders Related to a Single Specimen

HL7 2.5 Segment	HL7 Description
HL7_25_OML_O35	Laboratory Order for Multiple Orders Related to a Single Container of a Specimen
HL7_25_OMN_O07	Non-Stock Requisition Order
HL7_25_OMP_O09	Pharmacy/Treatment Order
HL7_25_OMS_O05	Stock Requisition Order
HL7_25_ORB_O28	Blood Product Order Acknowledgment
HL7_25_ORC	Common Order
HL7_25_ORD_O04	Diet Order Acknowledgment
HL7_25_ORF_R04	Response to Query; Transmission of Requested Observation
HL7_25_ORG	General Clinical Order Acknowledgment Message
HL7_25_ORG_O20	General Clinical Order Response
HL7_25_ORI_O24	Imaging Order Response Message To Any OMI
HL7_25_ORL_O22	General Laboratory Order Response Message to any OML
HL7_25_ORL_O34	Laboratory Order Response Message to a Multiple Order Related to Single Specimen OML
HL7_25_ORL_O36	Laboratory Order Response Message to a Single Container of a Specimen OML
HL7_25_ORM_O01	Pharmacy/Treatment Order Message
HL7_25_ORN_O08	Non-Stock Requisition Acknowledgment
HL7_25_ORP_O10	Pharmacy/Treatment Order Acknowledgment
HL7_25_ORR_O02	General Order Response Message Response to any ORM
HL7_25_ORS_O06	Stock Requisition Acknowledgment
HL7_25_ORU_R01	Unsolicited Transmission of an Observation Message
HL7_25_ORU_R30	Unsolicited Point-Of-Care Observation Message Without Existing Order _ Place An Order
HL7_25_ORU_R31	Unsolicited New Point-Of-Care Observation Message _ Search For An Order
HL7_25_ORU_R32	Unsolicited Pre-Ordered Point-Of-Care Observation
HL7_25_OSQ_Q06	Query for Order Status
HL7_25_OSR_Q06	Query Response for Order Status

HL7 2.5 Segment	HL7 Description
HL7_25_OUL_R21	Unsolicited Laboratory Observation
HL7_25_OUL_R22	Unsolicited Specimen Oriented Observation Message
HL7_25_OUL_R23	Unsolicited Specimen Container Oriented Observation Message
HL7_25_OUL_R24	Unsolicited Order Oriented Observation Message
HL7_25_PCR	Possible Causal Relationship
HL7_25_PD1	Patient Additional Demographic
HL7_25_PDA	Patient Death and Autopsy
HL7_25_PEO	Product Experience Observation
HL7_25_PES	Product Experience Sender
HL7_25_PEX_P07	Unsolicited Initial Individual Product Experience Report
HL7_25_PEX_P08	Unsolicited Update Individual Product Experience Report
HL7_25_PGL_PC6	Patient Goal Message - Goal Add
HL7_25_PGL_PC7	Patient Goal Message - Goal Update
HL7_25_PGL_PC8	Patient Goal Message - Goal Delete
HL7_25_PID	Patient Identification
HL7_25_PIN_I07	Patient Insurance Information - Unsolicited
HL7_25_PMU_B01	Add Personnel Record
HL7_25_PMU_B02	Update Personnel Record
HL7_25_PMU_B03	Delete Personnel Record
HL7_25_PMU_B04	Active Practicing Person
HL7_25_PMU_B05	Deactivate Practicing Person
HL7_25_PMU_B06	Terminate Practicing Person
HL7_25_PMU_B07	Grant Certificate/Permission
HL7_25_PMU_B08	Add Personnel Record - Revoke Certificate/Permission
HL7_25_PPG_PCG	Patient Pathway Message - Pathway (Goal-Oriented) Add
HL7_25_PPG_PCH	Patient Pathway Message - Pathway (Goal-Oriented) Update
HL7_25_PPG_PCJ	Patient Pathway Message - Pathway (Goal-Oriented) Delete
HL7_25_PPP_PCB	Patient Problem Message - Pathway (Problem-Oriented) Add

HL7 2.5 Segment	HL7 Description
HL7_25_PPP_PCC	Patient Problem Message - Pathway (Problem-Oriented) Update
HL7_25_PPP_PCD	Patient Problem Message - Pathway (Problem-Oriented) Delete
HL7_25_PPR_PC1	Patient Problem Message - Problem Add
HL7_25_PPR_PC2	Patient Problem Message - Problem Update
HL7_25_PPR_PC3	Patient Problem Message - Problem Delete
HL7_25_PPT_PCL	Patient Pathway Goal - Oriented Query Response
HL7_25_PPV_PCA	Patient Goal Response
HL7_25_PRI	Procedures
HL7_25_PRA	Practitioner Detail
HL7_25_PRB	Problem Details
HL7_25_PRC	Pricing
HL7_25_PRD	Provider Data
HL7_25_PRR_PC5	Patient Problem Response
HL7_25_PTH	Pathway
HL7_25_PTR_PCF	Patient Pathway Problem - Oriented Response
HL7_25_PV1	Patient Visit
HL7_25_PV2	Patient Visit - Additional Information
HL7_25_QAK	Query Acknowledgment
HL7_25_QBP_Q11	Query by Parameter - Requesting an RSP segment pattern response
HL7_25_QBP_Q13	Query by Parameter - Requesting an RTB - Tabular Response
HL7_25_QBP_Q15	Query by Parameter - Requesting an RDY Display Response
HL7_25_QBP_Q21	Query by Parameter - Get Person Demographics
HL7_25_QBP_Q22	Query by Parameter - Find Candidates
HL7_25_QBP_Q23	Query by Parameter - Get Corresponding Identifiers
HL7_25_QBP_Q24	Query by Parameter - Allocate Identifiers
HL7_25_QBP_Q25	Query by Parameter - Personnel Information by Segment Query
HL7_25_QBP_Q31	Query by Parameter - Dispense History
HL7_25_QBP_Z73	Query by Parameter - Information about Phone Calls

HL7 2.5 Segment	HL7 Description
HL7_25_QBP_Z75	Query by Parameter - Tabular Patient List
HL7_25_QBP_Z77	Query by Parameter - Tabular Patient List
HL7_25_QBP_Z79	Query by Parameter - Dispense Information
HL7_25_QBP_Z81	Query by Parameter - Dispense History
HL7_25_QBP_Z85	Query by Parameter - Pharmacy Information Comprehensive
HL7_25_QBP_Z87	Query by Parameter - Dispense Information
HL7_25_QBP_Z89	Query by Parameter - Lab Results History
HL7_25_QBP_Z91	Query by Parameter - Who am I
HL7_25_QBP_Z93	Query by Parameter - Tabular Dispense History
HL7_25_QBP_Z95	Query by Parameter - Tabular Dispense History
HL7_25_QBP_Z97	Query by Parameter - Dispense History
HL7_25_QBP_Z99	Query by Parameter - Who Am I
HL7_25_QCN_J01	Cancel Query/Acknowledge Message
HL7_25_QID	Query Identification
HL7_25_QPD	Query Parameter Definition
HL7_25_QRD	Original-Style Query Definition
HL7_25_QRF	Original style query filter
HL7_25_QRI	Query Response Instance
HL7_25_QRY_A19	Patient Query
HL7_25_QRY_PC4	Problem Query
HL7_25_QRY_PC9	Goal Query
HL7_25_QRY_PCE	Pathway (Problem-Oriented) Query
HL7_25_QRY_PCK	Pathway (Goal-Oriented) Query
HL7_25_QRY_Q26	Pharmacy/Treatment Order Response
HL7_25_QRY_Q27	Pharmacy/Treatment Administration Information
HL7_25_QRY_Q28	Pharmacy/Treatment Dispense Information
HL7_25_QRY_Q29	Pharmacy/Treatment Encoded Order Information
HL7_25_QRY_Q30	Pharmacy/Treatment Dose Information

HL7 2.5 Segment	HL7 Description
HL7_25_QRY_R02	Query for Results of Observation
HL7_25_QRY_T12	Document Query
HL7_25_QSB_Q16	Create Subscription
HL7_25_QSB_Z83	ORU Subscription
HL7_25_QSX_J02	Cancel Subscription/Acknowledge Message
HL7_25_QVR_Q17	Query for Previous Events
HL7_25_RAR_RAR	Pharmacy/treatment administration information
HL7_25_RAS_O17	Pharmacy/Treatment Administration
HL7_25_RCI_I05	Return Clinical Information
HL7_25_RCL_I06	Return Clinical List
HL7_25_RCP	Response Control Parameter
HL7_25_RDE_O11	Pharmacy/Treatment Encoded Order
HL7_25_RDE_O25	Pharmacy/Treatment Refill Authorization Request
HL7_25_RDF	Table Row Definition
HL7_25_RDR_RDR	Pharmacy/treatment dispense information
HL7_25_RDS_O13	Pharmacy/Treatment Dispense
HL7_25_RDT	Table Row Data
HL7_25_RDY_K15	Display Response in Response to QBP^Q15
HL7_25_RDY_Z80	Retrieve Patient Pharmacy Dispense History Information (Patient, Order Control Code, Medication, Date Range, Quantity Dispensed, and Ordering Provider)
HL7_25_RDY_Z98	Retrieve Patient Pharmacy Dispense History Information (Patient, Medication, Date Range, and How to Sort Response)
HL7_25_REF_I12	Patient Referral
HL7_25_REF_I13	Modify Patient Referral
HL7_25_REF_I14	Cancel Patient Referral
HL7_25_REF_I15	Request Patient Referral Status
HL7_25_RER_RER	Pharmacy/treatment encoded order information
HL7_25_RF1	Referral Information

HL7 2.5 Segment	HL7 Description
HL7_25_RGR_RGR	Pharmacy/treatment dose information
HL7_25_RGS	Resource Group
HL7_25_RGV_O15	Pharmacy/Treatment Give
HL7_25_RMI	Risk Management Incident
HL7_25_ROL	Role
HL7_25_ROR_ROR	Pharmacy prescription order query response
HL7_25_RPA_I08	Request for treatment authorization
HL7_25_RPA_I10	Request for resubmission of an authorization
HL7_25_RPA_I11	Request for cancellation of an authorization
HL7_25_RPI_I01	Request for insurance information
HL7_25_RPI_I04	Request for patient demographic data
HL7_25_RPL_I02	Request/receipt of patient selection display list
HL7_25_RPR_I03	Request/receipt of patient selection list
HL7_25_RQ1	Requisition Detail-1
HL7_25_RQA_I08	Request for Treatment Authorization Information
HL7_25_RPA_I09	Request for Modification to an Authorization
HL7_25_RQA_I10	Request for Re-submission of an Authorization
HL7_25_RQA_I11	Request for Cancellation of an Authorization
HL7_25_RQC_I05	Request for Patient Clinical Information
HL7_25_RQC_I06	Request/Receipt of Clinical Data Listing
HL7_25_RQD	Requisition Detail
HL7_25_RQI_I01	Request for Insurance Information
HL7_25_RQI_I02	Request/Receipt of Patient Selection Display List
HL7_25_RQI_I03	Request/Receipt of Patient Selection List
HL7_25_RQP_I04	Request for Patient Demographic Data
HL7_25_RRA_O18	Pharmacy/Treatment Administration Acknowledgment
HL7_25_RRD_O14	Pharmacy/Treatment Dispense Acknowledgment
HL7_25_RRE_O12	Pharmacy/Treatment Encoded Order Acknowledgment

HL7 2.5 Segment	HL7 Description
HL7_25_RRE_O26	Pharmacy/Treatment Refill Authorization Acknowledgement
HL7_25_RRG_O16	Pharmacy/Treatment Give Acknowledgment
HL7_25_RRI_I12	Patient referral
HL7_25_RRI_I13	Modify patient referral
HL7_25_RRI_I14	Cancel patient referral
HL7_25_RRI_I15	Request patient referral status
HL7_25_RSP_K11	Segment Pattern Response in Response to QBP^Q11
HL7_25_RSP_K21	Get Person Demographics Response
HL7_25_RSP_K22	Find Candidates Response
HL7_25_RSP_K23	Get Corresponding Identifiers Response
HL7_25_RSP_K24	Allocate Identifiers Response
HL7_25_RSP_K25	Personnel Information by Segment
HL7_25_RSP_K31	Segment Pattern Response - Pharmacy Dispense Message
HL7_25_RSP_Z82	Segment Pattern Response - Dispense History
HL7_25_RSP_Z84	Segment Pattern Response - Who Am I
HL7_25_RSP_Z86	Segment Pattern Response - Pharmacy Information Comprehensive
HL7_25_RSP_Z88	Segment Pattern Response - Dispense Information
HL7_25_RSP_Z90	Segment Pattern Response - Lab Results History
HL7_25_RTБ_K13	Tabular Response - RTB - Tabular response in response to QBP^Q13
HL7_25_RTБ_Z74	Tabular Response - Information about Phone Calls
HL7_25_RTБ_Z76	Tabular Response - Patient List
HL7_25_RTБ_Z78	Tabular Response - Patient List
HL7_25_RTБ_Z92	Tabular response
HL7_25_RTБ_Z94	Tabular Response - Dispense History
HL7_25_RTБ_Z96	Tabular Response - Dispense History
HL7_25_RXA	Pharmacy/Treatment Administration
HL7_25_RXC	Pharmacy/Treatment Component Order
HL7_25_RXD	Pharmacy/Treatment Dispense

HL7 2.5 Segment	HL7 Description
HL7_25_RXE	Pharmacy/Treatment Encoded Order
HL7_25_RXG	Pharmacy/Treatment Give
HL7_25_RXO	Pharmacy/Treatment Order
HL7_25_RXR	Pharmacy/Treatment Route
HL7_25_SAC	Specimen Container detail
HL7_25_SCH	Scheduling Activity Information
HL7_25_SFT	Software Segment
HL7_25_SID	Substance Identifier
HL7_25_SIU_S12	Schedule Information Unsolicited - Notification of new appointment booking
HL7_25_SIU_S13	Schedule Information Unsolicited - Notification of Appointment Rescheduling
HL7_25_SIU_S14	Schedule Information Unsolicited - Notification of Appointment Modification
HL7_25_SIU_S15	Schedule Information Unsolicited - Notification of Appointment Cancellation
HL7_25_SIU_S16	Schedule Information Unsolicited - Notification of Appointment Discontinuation
HL7_25_SIU_S17	Schedule Information Unsolicited - Notification of Appointment Deletion
HL7_25_SIU_S18	Schedule Information Unsolicited - Notification of Addition of Service/Resource on Appointment
HL7_25_SIU_S19	Schedule Information Unsolicited - Notification of Modification of Service/Resource on Appointment
HL7_25_SIU_S20	Schedule Information Unsolicited - Notification of Cancellation of Service/Resource on Appointment
HL7_25_SIU_S21	Schedule Information Unsolicited - Notification of Discontinuation of Service/Resource on Appointment
HL7_25_SIU_S22	Schedule Information Unsolicited - Notification of Deletion of Service/Resource on Appointment
HL7_25_SIU_S23	Schedule Information Unsolicited - Notification of Blocked Schedule Time Slot(s)
HL7_25_SIU_S24	Schedule Information Unsolicited - Notification of Opened (_unblocked_) Schedule Time Slot(s)

HL7 2.5 Segment	HL7 Description
HL7_25_SIU_S26	Schedule Information Unsolicited - Notification that Patient did Not Show Up for Schedule Appointment
HL7_25_SPM	Specimen
HL7_25_SQM_S25	Schedule Query Message - Schedule Query Message and Response
HL7_25_SQR_S25	Schedule Query Message and Response
HL7_25_SRM_S01	Schedule Request Message - Request New Appointment Booking
HL7_25_SRM_S02	Schedule Request Message - Request Appointment Rescheduling
HL7_25_SRM_S03	Schedule Request Message - Request Appointment Modification
HL7_25_SRM_S04	Schedule Request Message - Request Appointment Cancellation
HL7_25_SRM_S05	Schedule Request Message - Request Appointment Discontinuation
HL7_25_SRM_S06	Schedule Request Message - Request Appointment Deletion
HL7_25_SRM_S07	Schedule Request Message - Request Addition of Service/Resource on Appointment
HL7_25_SRM_S08	Schedule Request Message - Request Modification of Service/ Resource on Appointment
HL7_25_SRM_S09	Schedule Request Message - Request Cancellation of Service/ Resource on Appointment
HL7_25_SRM_S10	Schedule Request Message - Request Discontinuation of Service/ Resource on Appointment
HL7_25_SRM_S11	Schedule Request Message - Request Deletion of Service/Resource on Appointment
HL7_25_SRR_S01	Request New Appointment Response
HL7_25_SRR_S02	Request Appointment Rescheduling Response
HL7_25_SRR_S03	Request Appointment Modification Response
HL7_25_SRR_S04	Request Appointment Cancellation Response
HL7_25_SRR_S05	Request Appointment Discontinuation Response
HL7_25_SRR_S06	Request Appointment Deletion Response
HL7_25_SRR_S07	Request Addition of Service/resource on Appointment Response
HL7_25_SRR_S08	Request Modification of Service/resource on Appointment Response
HL7_25_SRR_S09	Request Cancellation of Service/resource on Appointment Response
HL7_25_SRR_S10	Request Discontinuation of Service/Resource on Appointment Response

HL7 2.5 Segment	HL7 Description
HL7_25_SRR_S11	Request Deletion of Service/Resource on Appointment Response
HL7_25_SSR_U04	Specimen Status Request Message
HL7_25_SSU_U03	Specimen Status Update Message
HL7_25_STF	Staff Identification - Segment
HL7_25_TCC	Test Code Configuration - Segment
HL7_25_TCD	Test Code Detail
HL7_25_TCR_U11	Automated Equipment Test Code Settings Request
HL7_25_TCU_U10	Automated Equipment Test Code Settings Update
HL7_25_TQ2	Timing/Quantity Relationship
HL7_25_TXA	Transcription Document Header
HL7_25_UB1	UB82
HL7_25_UB2	UB92 Data
HL7_25_VAR	Unknown/Variance
HL7_25_VXQ_V01	Query for Vaccination Record
HL7_25_VXR_V03	Vaccination Record Response
HL7_25_VXU_V04	Unsolicited Vaccination Record Update
HL7_25_VXX_V02	Response to Vaccination Query Returning Multiple PID Matches

HL7 Version 2.4 Message Library Structure

The following table describes the HL7 Version 2.4 Message Library.

HL7 2.4 Segment	HL7 Description
HL7_24_ABS	Segment Message Library
HL7_24_ACC	Segment Message Library
HL7_24_ACK	Segment Message Library
HL7_24_ADR_A19	Segment Message Library
HL7_24_ADT_A01	Admit/Visit Notification
HL7_24_ADT_A02	Transfer a Patient

HL7 2.4 Segment	HL7 Description
HL7_24_ADT_A03	Discharge/End Visit
HL7_24_ADT_A04	Register a Patient
HL7_24_ADT_A05	Pre- Admit a Patient
HL7_24_ADT_A06	Change an Outpatient to an Inpatient
HL7_24_ADT_A07	Change an Inpatient to an Outpatient
HL7_24_ADT_A08	Update Patient Information
HL7_24_ADT_A09	Patient Departing - Tracking
HL7_24_ADT_A10	Patient Arriving - Tracking
HL7_24_ADT_A11	Cancel Admit/Visit Notification
HL7_24_ADT_A12	Cancel Transfer
HL7_24_ADT_A13	Cancel Discharge/End Visit
HL7_24_ADT_A14	Pending Admit
HL7_24_ADT_A15	Pending Transfer
HL7_24_ADT_A16	Pending Discharge
HL7_24_ADT_A17	Swap Patients
HL7_24_ADT_A18	Merge Patient Information
HL7_24_ADT_A20	Bed Status Update
HL7_24_ADT_A21	Patient Goes on a Leave of Absence
HL7_24_ADT_A22	Patient Returns from a Leave of Absence
HL7_24_ADT_A23	Delete a Patient Record
HL7_24_ADT_A24	Link Patient Information
HL7_24_ADT_A25	Cancel Pending Discharge
HL7_24_ADT_A26	Cancel Pending Transfer
HL7_24_ADT_A27	Cancel Pending Admit
HL7_24_ADT_A28	Add Person or Patient Information
HL7_24_ADT_A29	Delete Person Information
HL7_24_ADT_A30	Merge Person Information
HL7_24_ADT_A31	Update Person Information

HL7 2.4 Segment	HL7 Description
HL7_24_ADT_A32	Cancel Patient Arriving - Tracking
HL7_24_ADT_A33	Cancel Patient Departing - Tracking
HL7_24_ADT_A34	Merge Patient Information - Patient ID Only
HL7_24_ADT_A35	Merge Patient Information - Account Number Only
HL7_24_ADT_A36	Merge Patient Information - Patient ID & Account Number
HL7_24_ADT_A37	Unlink Patient Information
HL7_24_ADT_A38	Cancel Pre-Admit
HL7_24_ADT_A39	Merge Patient - Patient ID
HL7_24_ADT_A40	Merge Patient - Patient Identifier List
HL7_24_ADT_A41	Merge Account - Patient Account Number
HL7_24_ADT_A42	Merge Visit - Visit Number
HL7_24_ADT_A43	Move Patient Information - Patient Identifier List
HL7_24_ADT_A44	Move Account Information - Patient Account Number
HL7_24_ADT_A45	Move Visit Information - Visit Number
HL7_24_ADT_A46	Change Patient ID
HL7_24_ADT_A47	Change Patient Identifier List
HL7_24_ADT_A48	Change Alternate
HL7_24_ADT_A49	Change Patient Account Number
HL7_24_ADT_A50	Change Visit Number
HL7_24_ADT_A51	Change Alternate Visit ID
HL7_24_ADT_A52	Cancel Leave of Absence for a Patient
HL7_24_ADT_A53	Cancel Patient Returns from a Leave of Absence
HL7_24_ADT_A54	Change Attending Doctor
HL7_24_ADT_A55	Cancel Change Attending Doctor
HL7_24_ADT_A60	Update Adverse Reaction Information
HL7_24_ADT_A61	Change Consulting Doctor
HL7_24_ADT_A62	Cancel Change Consulting Doctor
HL7_24_AFF	Professional Affiliation Additional Information

HL7 2.4 Segment	HL7 Description
HL7_24_AIG	Appointment Information _General Resource
HL7_24_AIL	Appointment Information _Location Resource
HL7_24_AIP	Appointment Information _Personnel Resource
HL7_24_AIS	Appointment Information
HL7_24_AL1	Patient Allergy Information
HL7_24_APR	Appointment Preferences
HL7_24_ARQ	Appointment Request
HL7_24_AUT	Authorization Information
HL7_24_BAR_P01	Add Patient Account
HL7_24_BAR_P02	Purge Patient Accounts
HL7_24_BAR_P05	Update Account
HL7_24_BAR_P06	End Account
HL7_24_BAR_P10	Transmit Ambulatory Payment Classification (APC) Groups
HL7_24_BLC	Blood Code HL7_24_BLG Billing
HL7_24_CDM	Charge Description Master
HL7_24_CM0	Clinical Study Master
HL7_24_CM1	Clinical Study Phase Master
HL7_24_CM2	Clinical Study Schedule Master
HL7_24_CNS	Clear Notification
HL7_24_CRM_C01	Register a Patient on a Clinical Trial
HL7_24_CRM_C02	Cancel a Patient Registration on Clinical Trial
HL7_24_CRM_C03	Correct/Update Registration Information
HL7_24_CRM_C04	Patient has Gone Off a Clinical Trial
HL7_24_CRM_C05	Patient Enters Phase of Clinical Trial
HL7_24_CRM_C06	Cancel Patient Entering a Phase
HL7_24_CRM_C07	Correct/Update Phase Information
HL7_24_CRM_C08	Patient has Gone Off Phase of Clinical Trial
HL7_24_CSP	Clinical Study Phase

HL7 2.4 Segment	HL7 Description
HL7_24_CSR	Clinical Study Registration
HL7_24_CSS	Clinical Study Data Schedule Segment
HL7_24_CSU_C09	Automated Time Intervals for Reporting, Like Monthly
HL7_24_CSU_C10	Patient Completes the Clinical Trial
HL7_24_CSU_C11	Patient Completes a Phase of the Clinical Trial
HL7_24_CSU_C12	Update/Correction of Patient Order/Result Information
HL7_24_CTD	Contact Data
HL7_24_CTI	Clinical Trial Identification
HL7_24_DB1	Disability
HL7_24_DFT_P03	Post Detail Financial Transactions
HL7_24_DFT_P11	Post Detail Financial Transactions - Expanded
HL7_24_DG1	Diagnosis
HL7_24_DOC	Document response
HL7_24_DRG	Diagnosis Related Group
HL7_24_DSC	Continuation Pointer
HL7_24_DSP	Display Data
HL7_24_DSR_Q01	Segment
HL7_24_DSR_Q03	Deferred Response to a Query
HL7_24_EAC_U07	Automated Equipment Command
HL7_24_EAN_U09	Automated Equipment Notification
HL7_24_EAR_U08	Automated Equipment Response
HL7_24_ECD	Equipment Command
HL7_24_ECR	Equipment Command Response
HL7_24_EDR	Enhanced display response
HL7_24_EDU	Educational Detail
HL7_24_EQL	Embedded Query Language
HL7_24_EQP	Equipment/log Service
HL7_24_EQQ_Q04	Embedded query language query

HL7 2.4 Segment	HL7 Description
HL7_24_EQU	Equipment Detail
HL7_24_ERP	Event Replay Response
HL7_24_ERQ	Event replay query
HL7_24_ERR	Error
HL7_24_ESR_U02	Automated Equipment Status Request
HL7_24_ESU_U01	Automated Equipment Status Update
HL7_24_EVN	Event Type
HL7_24_FAC	Facility
HL7_24_FTI	Financial Transaction
HL7_24_GOL	Goal Detail
HL7_24_GP1	Grouping/Reimbursement - Visit
HL7_24_GP2	Grouping/Reimbursement - Procedure Line ItemSegment
HL7_24_GT1	Guarantor
HL7_24_IAM	Patient Adverse Reaction Information
HL7_24_IN1	Insurance
HL7_24_IN2	Insurance Additional Information
HL7_24_IN3	Insurance Additional Information, Certification
HL7_24_INR_U06	Automated Equipment Inventory Request
HL7_24_INU_U05	Automated Equipment Inventory Update
HL7_24_INV	Inventory Detail
HL7_24_ISD	Interaction Status Detail
HL7_24_LAN	Language Detail
HL7_24_LCC	Location Charge Code
HL7_24_LCH	Location Characteristic
HL7_24_LDP	Location Department
HL7_24_LOC	Location Identification
HL7_24_LRL	Location Relationship
HL7_24_LSR_U13	Automated Equipment Log Service Request

HL7 2.4 Segment	HL7 Description
HL7_24_LSU_U12	Automated Equipment Log Service Update
HL7_24_MDM_T01	Original Document Notification
HL7_24_MDM_T02	Original Document Notification and Content
HL7_24_MDM_T03	Document Status Change Notification
HL7_24_MDM_T04	Document Status Change Notification and Content
HL7_24_MDM_T05	Document Addendum Notification
HL7_24_MDM_T06	Document Addendum Notification and Content
HL7_24_MDM_T07	Document Edit Notification
HL7_24_MDM_T08	Document Edit Notification and Content
HL7_24_MDM_T09	Document Replacement Notification
HL7_24_MDM_T10	Document Replacement Notification and Content
HL7_24_MDM_T11	Document Cancel Notification
HL7_24_MFA	Master File Acknowledgment
HL7_24_MFE	Master File Entry
HL7_24_MFI	Master File Identification
HL7_24_MFK_M01	Master files application acknowledgment - Not Otherwise Specified (Backward Compatibility)
HL7_24_MFK_M02	Master files Application Acknowledgment - Staff Practitioner
HL7_24_MFK_M03	Master files Application Acknowledgment - Test/Observation (Backward Compatibility)
HL7_24_MFK_M04	Master files Application Acknowledgment - Charge Description
HL7_24_MFK_M05	Master files Application Acknowledgment - Patient Location Master File
HL7_24_MFK_M06	Master files Application Acknowledgment - Clinical Study with Phases and Schedules
HL7_24_MFK_M07	Master files Application Acknowledgment - Clinical Study without Phases but with Schedules
HL7_24_MFN_M01	Master File Notification - Not Otherwise Specified (Backward Compatibility)
HL7_24_MFN_M02	Master File Notification - Staff/Practitioner
HL7_24_MFN_M03	Master File Notification - Test/Observation

HL7 2.4 Segment	HL7 Description
HL7_24_MFN_M04	Master File Notification - Charge Description
HL7_24_MFN_M05	Master File Notification - Patient Location
HL7_24_MFN_M06	Master File Notification - Clinical Study with Phases and Schedules
HL7_24_MFN_M07	Master File Notification - Clinical Study without Phases but with Schedules
HL7_24_MFN_M08	Master File Notification - Test/Observation (Numeric)
HL7_24_MFN_M09	Master File Notification - Test/Observation (Categorical)
HL7_24_MFN_M10	Master File Notification - Test/Observation Batteries
HL7_24_MFN_M11	Master File Notification - Test/Calculated Observations
HL7_24_MFN_M12	Master File Notification - Additional Basic Observation/Service Attributes
HL7_24_MFQ_M01	Master Files Query - Not Otherwise Specified (Backward Compatibility)
HL7_24_MFQ_M02	Master Files Query - Staff/Practitioner
HL7_24_MFQ_M03	Master Files Query - Test/Observation (for backward compatibility only)
HL7_24_MFQ_M04	Master Files Query - Charge Description
HL7_24_MFQ_M05	Master Files Query - Patient Location
HL7_24_MFQ_M06	Master Files Query - Clinical Study with Phases and Schedules
HL7_24_MFR_M01	Master File Response - Not Otherwise Specified (Backward Compatibility)
HL7_24_MFR_M02	Master File Response - Staff/Practitioner
HL7_24_MFR_M03	Master File Response - Test/Observation
HL7_24_MFR_M04	Master File Response - Charge Description
HL7_24_MFR_M05	Master File Response - Patient Location
HL7_24_MFR_M06	Master File Response - Clinical Study with Phases and Schedules
HL7_24_MRG	Merge Patient Information
HL7_24_MSA	Message Acknowledgment
HL7_24_MSH	Message Header
HL7_24_NCK	System Clock
HL7_24_NDS	Notification Detail
HL7_24_NK1	Next of Kin / Associated Parties
HL7_24_NMD_N02	Application Management Data Message (unsolicited)

HL7 2.4 Segment	HL7 Description
HL7_24_NMQ_N01	Application Management Query Message
HL7_24_NMR_N01	Application management response message
HL7_24_NPU	Bed Status Update
HL7_24_NSC	Application Status Change
HL7_24_NST	Application control level statistics
HL7_24_NTE	Notes and Comments
HL7_24_OBR	Observation Request
HL7_24_OBX	Observation/Result
HL7_24_ODS	Dietary Orders, Supplements, and Preferences
HL7_24_ODT	Diet Tray Instructions
HL7_24_OM1	General Segment
HL7_24_OM2	Numeric Observation
HL7_24_OM3	Categorical Service/Test/Observation
HL7_24_OM4	Observations that Require Specimens
HL7_24_OM5	Observation Batteries (Sets)
HL7_24_OM6	Observations that are Calculated from Other Observations
HL7_24_OM7	Additional Basic Attributes
HL7_24_OMD_O03	Diet Order
HL7_24_OMG_O19	General Clinical Order
HL7_24_OML_O21	Laboratory Order
HL7_24_OMN_O07	Non-Stock Requisition Order
HL7_24_OMP_O09	Pharmacy/Treatment Order
HL7_24_OMS_O05	Stock Requisition Order
HL7_24_ORC	Common Order
HL7_24_ORD_O05	Dietary order acknowledgment message
HL7_24_ORF_R04	Response to query; transmission of requested observation
HL7_24_ORG	General clinical order acknowledgment message
HL7_24_ORG_O20	General clinical order response

HL7 2.4 Segment	HL7 Description
HL7_24_ORL_O02	General laboratory order response
HL7_24_ORM_O01	Pharmacy/Treatment Order Message
HL7_24_ORN-O08	Non-Stock Requisition Acknowledgment
HL7_24_ORP_O10	Pharmacy/treatment order acknowledgment
HL7_24_ORR_O02	Pharmacy/Treatment Order Message - Order Response
HL7_24_OR_S_O06	Stock requisition acknowledgment
HL7_24_ORU_R01	Unsolicited Transmission of an Observation Message
HL7_24_OSQ_Q06	Query for Order Status
HL7_24_OSR_Q06	Query for Order Status Response
HL7_24_OUL_R21	Unsolicited Laboratory Observation
HL7_24_PCR	Possible Causal Relationship
HL7_24_PD1	Patient Additional Demographic
HL7_24_PDA	Patient Death and Autopsy
HL7_24_PDC	Product Detail Country
HL7_24_PEO	Product Experience Observation
HL7_24_PES	Product Experience Sender
HL7_24_PEX_P07	Unsolicited Initial Individual Product Experience Report
HL7_24_PEX_P08	Unsolicited Update Individual Product Experience Report
HL7_24_PGL_PC6	Goal Add
HL7_24_PGL_PC7	Goal Update
HL7_24_PGL_PC8	Goal Delete
HL7_24_PID	Patient Identification
HL7_24_PIN_I07	Unsolicited Insurance Information
HL7_24_PMU_B01	Add Personnel Record
HL7_24_PMU_B02	Update Personnel Record
HL7_24_PMU_B03	Delete Personnel Record
HL7_24_PMU_B04	Active Practicing Person
HL7_24_PMU_B05	Deactivate Practicing Person

HL7 2.4 Segment	HL7 Description
HL7_24_PMU_B06	Terminate Practicing Person
HL7_24_PPG_PCG	Pathway (Goal-Oriented) Add
HL7_24_PPG_PCH	Pathway (Goal-Oriented) Update
HL7_24_PPG_PCJ	Pathway (Goal-Oriented) Delete
HL7_24_PPP_PCB	Pathway (Problem-Oriented) Add
HL7_24_PPP_PCC	Pathway (Problem-Oriented) Update
HL7_24_PPP_PCD	Pathway (Problem-Oriented) Delete
HL7_24_PPR_PC1	Problem Add
HL7_24_PPR_PC2	Problem Update
HL7_24_PPR_PC3	Problem Delete
HL7_24_PPT_PC3	Segment Message Library
HL7_24_PPT_PCL	Segment Message Library
HL7_24_PPV_PCA	Segment Message Library
HL7_24_PR1	Segment Message Library
HL7_24_PRA	Segment Message Library
HL7_24_PRB	Segment Message Library
HL7_24_PRC	Segment Message Library
HL7_24_PRD	Segment Message Library
HL7_24_PRR_PC5	Segment Message Library
HL7_24_PSH	Segment Message Library
HL7_24_PTH	Segment Message Library
HL7_24_PTR_PCF	Segment Message Library
HL7_24_PV1	Segment Message Library
HL7_24_PV2	Segment Message Library
HL7_24_QAK	Segment Message Library
HL7_24_QBP_Q11	Query by Parameter Requesting an RSP Segment Pattern Response
HL7_24_QBP_Q13	Query by Parameter Requesting an RTB - Tabular Response
HL7_24_QBP_Q15	Query by Parameter Requesting an RDY Display Response

HL7 2.4 Segment	HL7 Description
HL7_24_QBP_Q21	Get Person Demographics
HL7_24_QBP_Q22	Find Candidates
HL7_24_QBP_Q23	Get Corresponding Identifiers
HL7_24_QBP_Q24	Allocate Identifiers
HL7_24_QBP_Q25	Personnel Information by Segment Query
HL7_24_QBP_Z73	Query by Parameter - Information about Phone Calls
HL7_24_QBP_Z75	Query by Parameter - Tabular Patient List
HL7_24_QBP_Z77	Query by Parameter - Tabular Patient List
HL7_24_QBP_Z79	Query by Parameter - Dispense Information
HL7_24_QBP_Z81	Query by Parameter - Dispense History
HL7_24_QBP_Z85	Query by Parameter - Pharmacy Information Comprehensive
HL7_24_QBP_Z87	Query by Parameter - Dispense Information
HL7_24_QBP_Z89	Query by Parameter - Lab Results History
HL7_24_QBP_Z91	Query by Parameter - Who am I
HL7_24_QBP_Z93	Query by Parameter - Tabular Dispense History
HL7_24_QBP_Z95	Query by Parameter - Tabular Dispense History
HL7_24_QBP_Z97	Query by Parameter - Dispense History
HL7_24_QBP_Z99	Query by Parameter - Who Am I
HL7_24_QCK_Q02	Segment
HL7_24_QCN_J01	Cancel Query/Acknowledge Message
HL7_24_QID	Segment Message Library
HL7_24_QPD	Segment Message Library
HL7_24_QRD	Segment Message Library
HL7_24_QRF	Segment Message Library
HL7_24_QRI	Segment Message Library
HL7_24_QRY_A19	Patient Query
HL7_24_QRY_PC4	Problem Query
HL7_24_QRY_PC9	Goal Query

HL7 2.4 Segment	HL7 Description
HL7_24_QRY_PCE	Pathway (Problem-Oriented) Query
HL7_24_QRY_PCK	Pathway (Goal-Oriented) Query
HL7_24_QRY_Q01	Query Sent for Immediate Response
HL7_24_QRY_Q02	Query Sent for Deferred Response
HL7_24_QRY_Q26	Pharmacy/Treatment Order Response
HL7_24_QRY_Q27	Pharmacy/Treatment Administration Information
HL7_24_QRY_Q28	Pharmacy/Treatment Dispense Information
HL7_24_QRY_Q29	Pharmacy/Treatment Encoded Order Information
HL7_24_QRY_Q30	Pharmacy/Treatment Dose Information
HL7_24_QRY_R02	Unsolicited Transmission of an Observation Message
HL7_24_QRY_T12	Document Query
HL7_24_QSB_Q16	Create Subscription
HL7_24_QSB_Z83	Create subscription - ORU
HL7_24_QSX_J02	Cancel Subscription/Acknowledge Message
HL7_24_QVR_Q17	Query for Previous Events
HL7_24_RAR_RAR	Segment Message Library
HL7_24_RAS_O17	Pharmacy/Treatment Administration
HL7_24_RCI_I05	Segment Message Library
HL7_24_RCI_I06	Segment Message Library
HL7_24_RCP	Segment Message Library
HL7_24_RDE_O11	Pharmacy/Treatment Encoded Order
HL7_24_RDF	Segment Message Library
HL7_24_RDR_RDR	Segment Message Library
HL7_24_RDS_O13	Pharmacy/Treatment Dispense
HL7_24_RDT	Segment Message Library
HL7_24_RDY_K15	Segment Message Library
HL7_24_RDY_Z80	Segment Message Library
HL7_24_RDY_Z98	Segment Message Library

HL7 2.4 Segment	HL7 Description
HL7_24_REF_I12	Patient Referral
HL7_24_REF_I13	Modify Patient Referral
HL7_24_REF_I14	Cancel Patient Referral
HL7_24_REF_I15	Request Patient Referral Status
HL7_24_RER_RER	Segment Message Library
HL7_24_RF1	Segment Message Library
HL7_24_RGR_RGR	Segment Message Library
HL7_24_RGS	Segment Message Library
HL7_24_RGV_O15	Pharmacy/Treatment Give
HL7_24_RMI	Segment Message Library
HL7_24_ROL	Segment Message Library
HL7_24_ROR_ROR	Segment Message Library
HL7_24_RPA_I08	Segment Message Library
HL7_24_RPA_I09	Segment Message Library
HL7_24_RPA_I10	Segment Message Library
HL7_24_RPA_I11	Segment Message Library
HL7_24_RPI_I01	Segment Message Library
HL7_24_RPI_I04	Segment Message Library
HL7_24_RPL_I02	Segment Message Library
HL7_24_RPR_I03	Segment Message Library
HL7_24_RQ1	Segment Message Library
HL7_24_RQA_I08	Request for Treatment Authorization Information
HL7_24_RQA_I09	Request for Modification to an Authorization
HL7_24_RQA_I10	Request for Re-submission of an Authorization
HL7_24_RQA_I11	Request for Cancellation of an Authorization
HL7_24_RQC_I05	Request for Patient Clinical Information
HL7_24_RQC_I06	Request/receipt of Clinical Data Listing
HL7_24_RQD	Segment

HL7 2.4 Segment	HL7 Description
HL7_24_RQI_I01	Request for Insurance Information
HL7_24_RQI_I02	Request/Receipt of Patient Selection Display List
HL7_24_RQI_I03	Request/Receipt of Patient Selection List
HL7_24_RQP_I04	Request for Patient Demographic Data
HL7_24_RQQ_Q09	Event Replay Query
HL7_24_RRA_O18	Segment Message Library
HL7_24_RRD_O14	Segment Message Library
HL7_24_RRE_O12	Segment Message Library
HL7_24_RRG_O16	Segment Message Library
HL7_24_RRI_I12	Segment Message Library
HL7_24_RRI_I13	Segment Message Library
HL7_24_RRI_I14	Segment Message Library
HL7_24_RRI_I15	Segment Message Library
HL7_24_RSP_K11	Segment Message Library
HL7_24_RSP_K21	Segment Message Library
HL7_24_RSP_K22	Segment Message Library
HL7_24_RSP_K23	Segment Message Library
HL7_24_RSP_K24	Segment Message Library
HL7_24_RSP_K25	Segment Message Library
HL7_24_RSP_Z82	Segment Message Library
HL7_24_RSP_Z84	Segment Message Library
HL7_24_RSP_Z86	Segment Message Library
HL7_24_RSP_Z88	Segment Message Library
HL7_24_RSP_Z90	Segment Message Library
HL7_24_RTБ_K13	Segment Message Library
HL7_24_RTБ_Z74	Segment Message Library
HL7_24_RTБ_Z76	Segment Message Library
HL7_24_RTБ_Z78	Segment Message Library

HL7 2.4 Segment	HL7 Description
HL7_24_RTB_Z92	Segment Message Library
HL7_24_RTB_Z94	Segment Message Library
HL7_24_RTB_Z96	Segment Message Library
HL7_24_RXA	Segment Message Library
HL7_24_RXC	Segment Message Library
HL7_24_RXD	Segment Message Library
HL7_24_RXE	Segment Message Library
HL7_24_RXG	Segment Message Library
HL7_24_RXO	Segment Message Library
HL7_24_RXR	Segment Message Library
HL7_24_SAC	Segment Message Library
HL7_24_SCH	Segment Message Library
HL7_24_SID	Segment Message Library
HL7_24_SIU_S12	Schedule Information Unsolicited - Notification of new appointment booking
HL7_24_SIU_S13	Schedule Information Unsolicited - Notification of Appointment Rescheduling
HL7_24_SIU_S14	Schedule Information Unsolicited - Notification of Appointment Modification
HL7_24_SIU_S15	Schedule Information Unsolicited - Notification of Appointment Cancellation
HL7_24_SIU_S16	Schedule Information Unsolicited - Notification of Appointment Discontinuation
HL7_24_SIU_S17	Schedule Information Unsolicited - Notification of Appointment Deletion
HL7_24_SIU_S18	Schedule Information Unsolicited - Notification of Addition of Service/Resource on Appointment
HL7_24_SIU_S19	Schedule Information Unsolicited - Notification of Modification of Service/Resource on Appointment
HL7_24_SIU_S20	Schedule Information Unsolicited - Notification of Cancellation of Service/Resource on Appointment
HL7_24_SIU_S21	Schedule Information Unsolicited - Notification of Discontinuation of Service/Resource on Appointment

HL7 2.4 Segment	HL7 Description
HL7_24_SIU_S22	Schedule Information Unsolicited - Notification of Deletion of Service/Resource on Appointment
HL7_24_SIU_S23	Schedule Information Unsolicited - Notification of Blocked Schedule Time Slot(s)
HL7_24_SIU_S24	Schedule Information Unsolicited - Notification of Opened (_unblocked_) Schedule Time Slot(s)
HL7_24_SIU_S26	Schedule Information Unsolicited - Notification that Patient did Not Show Up for Schedule Appointment
HL7_24_SPQ_Q08	Stored Procedure Request
HL7_24_SPR	Segment Message Library
HL7_24_SQM_S25	Schedule Query Message and Response
HL7_24_SQR_S25	Segment Message Library
HL7_24_SRM_S01	Schedule Request Message - Request New Appointment Booking
HL7_24_SRM_S02	Schedule Request Message - Request Appointment Rescheduling
HL7_24_SRM_S03	Schedule Request Message - Request Appointment Modification
HL7_24_SRM_S04	Schedule Request Message - Request Appointment Cancellation
HL7_24_SRM_S05	Schedule Request Message - Request Appointment Discontinuation
HL7_24_SRM_S06	Schedule Request Message - Request Appointment Deletion
HL7_24_SRM_S07	Schedule Request Message - Request Addition of Service/Resource on Appointment
HL7_24_SRM_S08	Schedule Request Message - Request Modification of Service/ Resource on Appointment
HL7_24_SRM_S09	Schedule Request Message - Request Cancellation of Service/ Resource on Appointment
HL7_24_SRM_S10	Schedule Request Message - Request Discontinuation of Service/ Resource on Appointment
HL7_24_SRM_S11	Schedule Request Message - Request Deletion of Service/Resource on Appointment
HL7_24_SRR_S01	Request New Appointment Response
HL7_24_SRR_S02	Request Appointment Rescheduling Response
HL7_24_SRR_S03	Request Appointment Modification Response
HL7_24_SRR_S04	Request Appointment Cancellation Response

HL7 2.4 Segment	HL7 Description
HL7_24_SRR_S05	Request Appointment Discontinuation Response
HL7_24_SRR_S06	Request Appointment Deletion Response
HL7_24_SRR_S07	Request Addition of Service/resource on Appointment Response
HL7_24_SRR_S08	Request Modification of Service/resource on Appointment Response
HL7_24_SRR_S09	Request Cancellation of Service/resource on Appointment Response
HL7_24_SRR_S10	Request Discontinuation of Service/Resource on Appointment Response
HL7_24_SRR_S11	Request Deletion of Service/Resource on Appointment Response
HL7_24_SSR_U04	Specimen Status Request
HL7_24_SSU_U03	Specimen Status Update
HL7_24_STF	Staff Identification
HL7_24_SUR_P09	Summary Product Experience Report
HL7_24_TBR_R08	Tabular Data Response
HL7_24_TCC	Test Code Configuration
HL7_24_TCD	Test Code Detail
HL7_24_TCR_U11	Automated Equipment Test Code Settings Request
HL7_24_TCU_U10	Automated Equipment Test Code Settings Update
HL7_24_TXA	Transcription Document Header
HL7_24_UB1	UB82
HL7_24_UB2	UB92 Data
HL7_24_UDM_Q05	Unsolicited Display Update Message
HL7_24_URD	Results/update Definition
HL7_24_URS	Unsolicited Selection
HL7_24_VAR	Variance
HL7_24_VQQ_Q07	Virtual Table Query
HL7_24_VTQ	Virtual Table Query Request
HL7_24_VXQ_V01	Query for Vaccination Record
HL7_24_VXR_V03	Vaccination Record Response
HL7_24_VXU_V04	Unsolicited Vaccination Record Update

HL7 2.4 Segment	HL7 Description
HL7_24_VXX_V02	Response to Vaccination Query Returning Multiple PID Matches

HL7 Version 2.3.1 Message Library Structure

The following table describes the HL7 Version 2.3.1 Message Library.

HL7 2.3.1 Segment	HL7 Description
HL7_231_ACC	Segment Message Library
HL7_231_ACK	Segment Message Library
HL7_231_ADR_A19	Segment Message Library
HL7_231_ADT_A01	Admit/Visit Notification
HL7_231_ADT_A02	Transfer a Patient
HL7_231_ADT_A03	Discharge/End Visit
HL7_231_ADT_A04	Register a Patient
HL7_231_ADT_A05	Pre-Admit a Patient
HL7_231_ADT_A06	Change an Outpatient to an Inpatient
HL7_231_ADT_A07	Change an Inpatient to an Outpatient
HL7_231_ADT_A08	Update Patient Information
HL7_231_ADT_A09	Patient Departing - Tracking
HL7_231_ADT_A10	Patient Arriving - Tracking
HL7_231_ADT_A11	Cancel Admit/Visit Notification
HL7_231_ADT_A12	Cancel Transfer
HL7_231_ADT_A13	Cancel Discharge/End Visit
HL7_231_ADT_A14	Pending Admit
HL7_231_ADT_A15	Pending Transfer
HL7_231_ADT_A16	Pending Discharge
HL7_231_ADT_A17	Swap Patients
HL7_231_ADT_A18	Merge Patient Information
HL7_231_ADT_A20	Bed Status Update

HL7 2.3.1 Segment	HL7 Description
HL7_231_ADT_A21	Patient Goes on a Leave of Absence
HL7_231_ADT_A22	Patient Returns from a Leave of Absence
HL7_231_ADT_A23	Delete a Patient Record
HL7_231_ADT_A24	Link Patient Information
HL7_231_ADT_A25	Cancel Pending Discharge
HL7_231_ADT_A26	Cancel Pending Transfer
HL7_231_ADT_A27	Cancel Pending Admit
HL7_231_ADT_A28	Add Person or Patient Information
HL7_231_ADT_A29	Delete Person Information
HL7_231_ADT_A30	Merge Person Information
HL7_231_ADT_A31	Update Person Information
HL7_231_ADT_A32	Cancel Patient Arriving - Tracking
HL7_231_ADT_A33	Cancel Patient Departing - Tracking
HL7_231_ADT_A34	Merge Patient Information - Patient ID Only
HL7_231_ADT_A35	Merge Patient Information - Account Number Only
HL7_231_ADT_A36	Merge Patient Information - Patient ID & Account Number
HL7_231_ADT_A37	Unlink Patient Information
HL7_231_ADT_A38	Cancel Pre-Admit
HL7_231_ADT_A39	Merge Patient - Patient ID
HL7_231_ADT_A40	Merge Patient - Patient Identifier List
HL7_231_ADT_A41	Merge Account - Patient Account Number
HL7_231_ADT_A42	Merge Visit - Visit Number
HL7_231_ADT_A43	Move Patient Information - Patient Identifier List
HL7_231_ADT_A44	Move Account Information - Patient Account Number
HL7_231_ADT_A45	Move Visit Information - Visit Number
HL7_231_ADT_A46	Change Patient ID
HL7_231_ADT_A47	Change Patient Identifier List
HL7_231_ADT_A48	Change Alternate

HL7 2.3.1 Segment	HL7 Description
HL7_231_ADT_A49	Change Patient Account Number
HL7_231_ADT_A50	Change Visit Number
HL7_231_ADT_A51	Change Alternate Visit ID
HL7_231_AIG	Segment Message Library
HL7_231_AIL	Segment Message Library
HL7_231_AIP	Segment Message Library
HL7_231_AIS	Segment Message Library
HL7_231_AL1	Segment Message Library
HL7_231_APR	Segment Message Library
HL7_231_AQR	Segment Message Library
HL7_231_AUT	Segment Message Library
HL7_231_BAR_P01	Add Patient Account
HL7_231_BAR_P02	Purge Patient Accounts
HL7_231_BAR_P05	Update Account
HL7_231_BAR_P06	End Account
HL7_231_BLG	Segment Message Library
HL7_231_CRM_C01	Register a Patient on a Clinical Trial
HL7_231_CRM_C02	Cancel a Patient Registration on Clinical Trial
HL7_231_CRM_C03	Correct/Update Registration Information
HL7_231_CRM_C04	Patient has Gone Off a Clinical Trial
HL7_231_CRM_C05	Patient Enters Phase of Clinical Trial
HL7_231_CRM_C06	Cancel Patient Entering a Phase
HL7_231_CRM_C07	Correct/Update Phase Information
HL7_231_CRM_C08	Patient has Gone Off Phase of Clinical Trial
HL7_231_CSP	Segment Message Library
HL7_231_CSR	Segment Message Library
HL7_231_CSS	Segment Message Library
HL7_231_CSU_C09	Automated Time Intervals for Reporting, Like Monthly

HL7 2.3.1 Segment	HL7 Description
HL7_231_CSU_C10	Patient Completes the Clinical Trial
HL7_231_CSU_C11	Patient Completes a Phase of the Clinical Trial
HL7_231_CSU_C12	Update/Correction of Patient Order/Result Information
HL7_231_CTD	Segment Message Library
HL7_231_CTI	Segment Message Library
HL7_231_DB1	Segment Message Library
HL7_231_DFT_P03	Post Detail Financial Transactions
HL7_231_DG1	Segment Message Library
HL7_231_DOC_T12	Segment Message Library
HL7_231_DRG	Segment Message Library
HL7_231_DSC	Segment Message Library
HL7_231_DSP	Segment Message Library
HL7_231_DSR_Q01	Segment Message Library
HL7_231_DSR_Q03	Post Detail Financial Transactions - Expanded
HL7_231_EDR_R07	Enhanced Display Response
HL7_231_EQL	Segment Message Library
HL7_231_EQQ_Q04	Embedded Query Language Query
HL7_231_ERP_R09	Event Replay Response
HL7_231_ERQ	Segment Message Library
HL7_231_ERR	Segment Message Library
HL7_231_EVN	Segment Message Library
HL7_231_FAC	Segment Message Library
HL7_231_FT1	Segment Message Library
HL7_231_GOL	Segment Message Library
HL7_231_GT1	Segment Message Library
HL7_231_IN1	Segment Message Library
HL7_231_IN2	Segment Message Library
HL7_231_IN3	Segment Message Library

HL7 2.3.1 Segment	HL7 Description
HL7_231_MDM_T01	Original Document Notification
HL7_231_MDM_T02	Original Document Notification and Content
HL7_231_MDM_T03	Document Status Change Notification
HL7_231_MDM_T04	Document Status Change Notification and Content
HL7_231_MDM_T05	Document Addendum Notification
HL7_231_MDM_T06	Document Addendum Notification and Content
HL7_231_MDM_T07	Document Edit Notification
HL7_231_MDM_T08	Document Edit Notification and Content
HL7_231_MDM_T09	Document Replacement Notification
HL7_231_MDM_T10	Document Replacement Notification and Content
HL7_231_MDM_T11	Document Cancel Notification
HL7_231_MFA	Segment Message Library
HL7_231_MFE	Segment Message Library
HL7_231_MFI	Segment Message Library
HL7_231_MFK_M01	Segment Message Library
HL7_231_MFK_M02	Segment Message Library
HL7_231_MFK_M03	Segment Message Library
HL7_231_MFK_M04	Segment Message Library
HL7_231_MFK_M05	Segment Message Library
HL7_231_MFK_M06	Segment Message Library
HL7_231_MFK_M07	Segment Message Library
HL7_231_MFK_M08	Segment Message Library
HL7_231_MFK_M09	Segment Message Library
HL7_231_MFK_M010	Segment Message Library
HL7_231_MFK_M11	Segment Message Library
HL7_231_MFN_M01	Master File Notification
HL7_231_MFN_M02	Staff/Practitioner Master File Message
HL7_231_MFN_M03	Master File Notification - Test/Observation

HL7 2.3.1 Segment	HL7 Description
HL7_231_MFN_M04	Charge Description Master File Message
HL7_231_MFN_M05	Patient Location Master File Message
HL7_231_MFN_M06	Clinical Trials Master File Message (Identifier Code CMA)
HL7_231_MFN_M08	Master File Notification - Test/Observation (Numeric)
HL7_231_MFN_M09	Master File Notification - Test/Observation (Categorical)
HL7_231_MFN_M10	Master File Notification - Test/Observation Batteries
HL7_231_MFN_M11	Master File Notification - Test/Calculated Observations
HL7_231_MFQ_M01	Master Files Query - Not Otherwise Specified (for backward compatibility only)
HL7_231_MFQ_M02	Master Files Query - Staff/Practitioner
HL7_231_MFQ_M03	Master Files Query - Test/Observation (for backward compatibility only)
HL7_231_MFQ_M04	Master Files Query - Charge Description
HL7_231_MFQ_M05	Master Files Query - Patient Location
HL7_231_MFQ_M06	Master Files Query - Clinical Study with Phases and Schedules
HL7_231_MFR_M01	Segment Message Library
HL7_231_MFR_M02	Segment Message Library
HL7_231_MFR_M03	Segment Message Library
HL7_231_MFR_M04	Segment Message Library
HL7_231_MFR_M05	Segment Message Library
HL7_231_MFR_M06	Segment Message Library
HL7_231_MRG	Segment Message Library
HL7_231_MSA	Segment Message Library
HL7_231_MSH	Segment Message Library
HL7_231_NCK	Segment Message Library
HL7_231_NK1	Segment Message Library
HL7_231_NMD_N02	Application Management Data Message
HL7_231_NMQ_N01	Application Management Query Message
HL7_231_NMR_N01	Segment Message Library

HL7 2.3.1 Segment	HL7 Description
HL7_231_NPU	Segment Message Library
HL7_231_NSC	Segment Message Library
HL7_231_NST	Segment Message Library
HL7_231_NTE	Segment Message Library
HL7_231_OBR	Segment Message Library
HL7_231_OBX	Segment Message Library
HL7_231_ODS	Segment Message Library
HL7_231_ODT	Segment Message Library
HL7_231_OM1	Segment Message Library
HL7_231_OM2	Segment Message Library
HL7_231_OM3	Segment Message Library
HL7_231_OM4	Segment Message Library
HL7_231_OM5	Segment Message Library
HL7_231_OM6	Segment Message Library
HL7_231_OMD_O01	Dietary Order
HL7_231_OMN_O01	Non-Stock Requisition Order Message
HL7_231_OMS_O01	Stock Requisition Order Message
HL7_231_ORC	Segment
HL7_231_ORD_O02	Dietary Order Acknowledgment Message
HL7_231_ORF_R04	Segment
HL7_231_ORM_O01	Pharmacy/Treatment Order Message
HL7_231_ORN_O02	General Order Acknowledgment Message
HL7_231_ORR_O02	General Order Response Message Response to any ORM
HL7_231_ORS_O02	Stock Requisition Acknowledgment
HL7_231_ORU_R01	Unsolicited Transmission of an Observation Message
HL7_231_OSQ_Q06	Query for Order Status
HL7_231_OSR_Q06	Segment Message Library
HL7_231_PCR	Segment Message Library

HL7 2.3.1 Segment	HL7 Description
HL7_231_PD1	Segment Message Library
HL7_231_PDC	Segment Message Library
HL7_231_PEO	Segment Message Library
HL7_231_PES	Segment Message Library
HL7_231_PEX_P07	Unsolicited Initial Individual Product Experience Report
HL7_231_PEX_P08	Unsolicited Update Individual Product Experience Report
HL7_231_PGL_PC6	Patient Goal Message - Goal Add
HL7_231_PGL_PC7	Patient Goal Message - Goal Update
HL7_231_PGL_PC8	Patient Goal Message - Goal Delete
HL7_231_PID	Segment Message Library
HL7_231_PIN_I07	Patient Insurance Information - Unsolicited
HL7_231_PPG_PCG	Pathway (Goal-Oriented) Add
HL7_231_PPG_PCH	Pathway (Goal-Oriented) Update
HL7_231_PPG_PCJ	Pathway (Goal-Oriented) Delete
HL7_231_PPP_PCB	Pathway (Problem-Oriented) Add
HL7_231_PPP_PCC	Pathway (Problem-Oriented) Update
HL7_231_PPP_PCD	Pathway (Problem-Oriented) Delete
HL7_231_PPR_PC1	Problem Add
HL7_231_PPR_PC2	Problem Update
HL7_231_PPR_PC3	Problem Delete
HL7_231_PPT_PCL	Pathway (Goal-Oriented) Query Response
HL7_231_PPV_PCA	Goal Response
HL7_231_PRI	Segment Message Library
HL7_231_PRA	Segment Message Library
HL7_231_PRB	Segment Message Library
HL7_231_PRD	Segment Message Library
HL7_231_PRR_PC5	Problem Response
HL7_231_PSH	Segment Message Library

HL7 2.3.1 Segment	HL7 Description
HL7_231_PTH	Segment Message Library
HL7_231_PTR_PCF	Pathway (Problem-Oriented) Query Response
HL7_231_PV1	Segment Message Library
HL7_231_PV2	Segment Message Library
HL7_231_QAK	Segment Message Library
HL7_231_QCK_Q02	Segment Message Library
HL7_231_QRD	Segment Message Library
HL7_231_QRF	Segment Message Library
HL7_231_QRY_A19	Patient Query
HL7_231_QRY_PC4	Problem Query
HL7_231_QRY_PC9	Goal Query
HL7_231_QRY_PCE	Pathway (Problem-Oriented) Query
HL7_231_QRY_PCK	Pathway (Goal-Oriented) Query
HL7_231_QRY_Q01	Query Sent for Immediate Response
HL7_231_QRY_Q02	Query Sent for Deferred Response
HL7_231_QRY_R02	Query for Results of Observation
HL7_231_QRY_T12	Document Query
HL7_231_RAR_RAR	Pharmacy Administration Information
HL7_231_RAS_O01	Pharmacy/Treatment Administration Order Message
HL7_231_RCI_I05	Segment Message Library
HL7_231_RCL_I06	Segment Message Library
HL7_231_RDE_O01	Pharmacy/Treatment Encoded Order Message
HL7_231_RDF	Segment Message Library
HL7_231_RDO_O01	Pharmacy/Treatment Order Message
HL7_231_RDR_RDR	Pharmacy/Treatment Dispense Information
HL7_231_RDS_O01	Pharmacy/Treatment Dispense Order Message
HL7_231_RDT	Segment Message Library
HL7_231_REF_I12	Patient Referral

HL7 2.3.1 Segment	HL7 Description
HL7_231_REF_I13	Modify Patient Referral
HL7_231_REF_I14	Cancel Patient Referral
HL7_231_REF_I15	Request Patient Referral Status
HL7_231_RER_RER	Pharmacy/Treatment Encoded Order Information
HL7_231_RF1	Segment Message Library
HL7_231_RGR_RGR	Pharmacy/Treatment Dose Information
HL7_231_RGS	Segment Message Library
HL7_231_RGV_O01	Pharmacy/Treatment Give - Order Message
HL7_231_ROL	Segment Message Library
HL7_231_ROR_R0R	Pharmacy/Treatment Order Response
HL7_231_RPA_I08	Segment Message Library
HL7_231_RPA_I09	Segment Message Library
HL7_231_RPA_I10	Segment Message Library
HL7_231_RPA_I11	Segment Message Library
HL7_231_RPI_I01	Segment Message Library
HL7_231_RPI_I04	Segment Message Library
HL7_231_RPL_I02	Segment Message Library
HL7_231_RPR_I03	Segment Message Library
HL7_231_RQ1	Segment Message Library
HL7_231_RQA_I08	Request for Treatment Authorization Information
HL7_231_RQA_I09	Request for Modification to an Authorization
HL7_231_RQA_I10	Request for Re-submission of an Authorization
HL7_231_RQA_I11	Request for Cancellation of an Authorization
HL7_231_RQC_I05	Request for Patient Clinical Information
HL7_231_RQC_I06	Request/Receipt of Clinical Data Listing
HL7_231_RQD	Segment Message Library
HL7_231_RQI_I01	Request for Insurance Information
HL7_231_RQI_I02	Request/Receipt of Patient Selection Display List

HL7 2.3.1 Segment	HL7 Description
HL7_231_RQI_I03	Request/Receipt of Patient Selection List
HL7_231_RQP_I04	Request for Patient Demographic Data
HL7_231_RQQ_Q09	Event Replay Query
HL7_231_RRA_O02	Pharmacy/Treatment Administration Acknowledgment Message
HL7_231_RRD_O02	Pharmacy/Treatment Dispense Acknowledgment Message
HL7_231_RRE_O02	Pharmacy/Treatment Encoded Order Acknowledgment Message
HL7_231_RRG_O02	Pharmacy/Treatment Give Acknowledgment Message
HL7_231_RRI_I12	Segment Message Library
HL7_231_RRI_I13	Segment Message Library
HL7_231_RRI_I14	Segment Message Library
HL7_231_RRI_I15	Segment Message Library
HL7_231_RRO_O02	ORR Message for Pharmacy/Treatment - Order Response
HL7_231_RXA	Segment Message Library
HL7_231_RXC	Segment Message Library
HL7_231_RXD	Segment Message Library
HL7_231_RXE	Segment Message Library
HL7_231_RXG	Segment Message Library
HL7_231_RXO	Segment Message Library
HL7_231_RXR	Segment Message Library
HL7_231_SCH	Segment Message Library
HL7_231_SIU_S12	Schedule Information Unsolicited - Notification of new appointment booking
HL7_231_SIU_S13	Schedule Information Unsolicited - Notification of Appointment Rescheduling
HL7_231_SIU_S14	Schedule Information Unsolicited - Notification of Appointment Modification
HL7_231_SIU_S15	Schedule Information Unsolicited - Notification of Appointment Cancellation
HL7_231_SIU_S16	Schedule Information Unsolicited - Notification of Appointment Discontinuation

HL7 2.3.1 Segment	HL7 Description
HL7_231_SIU_S17	Schedule Information Unsolicited - Notification of Appointment Deletion
HL7_231_SIU_S18	Schedule Information Unsolicited - Notification of Addition of Service/Resource on Appointment
HL7_231_SIU_S19	Schedule Information Unsolicited - Notification of Modification of Service/Resource on Appointment
HL7_231_SIU_S20	Schedule Information Unsolicited - Notification of Cancellation of Service/Resource on Appointment
HL7_231_SIU_S21	Schedule Information Unsolicited - Notification of Discontinuation of Service/Resource on Appointment
HL7_231_SIU_S22	Schedule Information Unsolicited - Notification of Deletion of Service/Resource on Appointment
HL7_231_SIU_S23	Schedule Information Unsolicited - Notification of Blocked Schedule Time Slot(s)
HL7_231_SIU_S24	Schedule Information Unsolicited - Notification of Opened (_unblocked_) Schedule Time Slot(s)
HL7_231_SIU_S26	Schedule Information Unsolicited - Notification that Patient did Not Show Up for Schedule Appointment
HL7_231_SPQ_Q08	Stored Procedure Request
HL7_231_SPR	Segment Message Library
HL7_231_SQM_S25	Schedule Query Message and Response
HL7_231_SRM_S01	Schedule Request Message - Request New Appointment Booking
HL7_231_SRM_S02	Schedule Request Message - Request Appointment Rescheduling
HL7_231_SRM_S03	Schedule Request Message - Request Appointment Modification
HL7_231_SRM_S04	Schedule Request Message - Request Appointment Cancellation
HL7_231_SRM_S05	Schedule Request Message - Request Appointment Discontinuation
HL7_231_SRM_S06	Schedule Request Message - Request Appointment Deletion
HL7_231_SRM_S07	Schedule Request Message - Request Addition of Service/Resource on Appointment
HL7_231_SRM_S08	Schedule Request Message - Request Modification of Service/ Resource on Appointment
HL7_231_SRM_S09	Schedule Request Message - Request Cancellation of Service/ Resource on Appointment

HL7 2.3.1 Segment	HL7 Description
HL7_231_SRM_S10	Schedule Request Message - Request Discontinuation of Service/ Resource on Appointment
HL7_231_SRM_S11	Schedule Request Message - Request Deletion of Service/Resource on Appointment
HL7_231_SRR_S01	Segment Message Library
HL7_231_SRR_S02	Segment Message Library
HL7_231_SRR_S03	Segment Message Library
HL7_231_SRR_S04	Segment Message Library
HL7_231_SRR_S05	Segment Message Library
HL7_231_SRR_S06	Segment Message Library
HL7_231_SRR_S07	Segment Message Library
HL7_231_SRR_S08	Segment Message Library
HL7_231_SRR_S09	Segment Message Library
HL7_231_SRR_S10	Segment Message Library
HL7_231_SRR_S11	Segment Message Library
HL7_231_STF	Segment Message Library
HL7_231_SUR_P09	Summary Product Experience Report
HL7_231_TBR_R08	Tabular Data Response
HL7_231_TXA	Segment Message Library
HL7_231_UB1	Segment Message Library
HL7_231_UB2	Segment Message Library
HL7_231_UDM_Q05	Unsolicited Display Update Message
HL7_231_URD	Segment Message Library
HL7_231_URS	Segment Message Library
HL7_231_VAR	Segment Message Library
HL7_231_VQQ_Q07	Virtual Table Query
HL7_231_VTQ	Segment Message Library
HL7_231_VXQ_V01	Query for Vaccination Record
HL7_231_VXR_V03	Vaccination Record Response

HL7 2.3.1 Segment	HL7 Description
HL7_231_VXU_V04	Unsolicited Vaccination Record Update
HL7_231_VXX_V02	Response to Vaccination Query Returning Multiple PID Matches

HL7 Version 2.3 Message Library Structure

The following table describes the HL7 Version 2.3 Message Library.

HL7 2.3 Segment	HL7 Description
HL7_23_ACC	Segment Message Library
HL7_23_ACK	Segment Message Library
HL7_23_ADR_A19	Segment Message Library
HL7_23_ADT_A01	Admit/Visit Notification
HL7_23_ADT_A02	Transfer a Patient
HL7_23_ADT_A03	Discharge/End Visit
HL7_23_ADT_A04	Register a Patient
HL7_23_ADT_A05	Pre-Admit a Patient
HL7_23_ADT_A06	Change an Outpatient to an Inpatient
HL7_23_ADT_A07	Change an Inpatient to an Outpatient
HL7_23_ADT_A08	Update Patient Information
HL7_23_ADT_A09	Patient Departing - Tracking
HL7_23_ADT_A10	Patient Arriving - Tracking
HL7_23_ADT_A11	Cancel Admit/Visit Notification
HL7_23_ADT_A12	Cancel Transfer
HL7_23_ADT_A13	Cancel Discharge/End Visit
HL7_23_ADT_A14	Pending Admit
HL7_23_ADT_A15	Pending Transfer
HL7_23_ADT_A16	Pending Discharge
HL7_23_ADT_A17	Swap Patients
HL7_23_ADT_A18	Merge Patient Information

HL7 2.3 Segment	HL7 Description
HL7_23_ADT_A20	Bed Status Update
HL7_23_ADT_A21	Patient Goes on a Leave of Absence
HL7_23_ADT_A22	Patient Returns from a Leave of Absence
HL7_23_ADT_A23	Delete a Patient Record
HL7_23_ADT_A24	Link Patient Information
HL7_23_ADT_A25	Cancel Pending Discharge
HL7_23_ADT_A26	Cancel Pending Transfer
HL7_23_ADT_A27	Cancel Pending Admit
HL7_23_ADT_A28	Add Person or Patient Information
HL7_23_ADT_A29	Delete Person Information
HL7_23_ADT_A30	Merge Person Information
HL7_23_ADT_A31	Update Person Information
HL7_23_ADT_A32	Cancel Patient Arriving - Tracking
HL7_23_ADT_A33	Cancel Patient Departing - Tracking
HL7_23_ADT_A34	Merge Patient Information - Patient ID Only
HL7_23_ADT_A35	Merge Patient Information - Account Number Only
HL7_23_ADT_A36	Merge Patient Information - Patient ID & Account Number
HL7_23_ADT_A37	Unlink Patient Information
HL7_23_ADT_A38	Cancel Pre-Admit
HL7_23_ADT_A39	Merge Patient - Patient ID
HL7_23_ADT_A40	Merge Patient - Patient Identifier List
HL7_23_ADT_A41	Merge Account - Patient Account Number
HL7_23_ADT_A42	Merge Visit - Visit Number
HL7_23_ADT_A43	Move Patient Information - Patient Identifier List
HL7_23_ADT_A44	Move Account Information - Patient Account Number
HL7_23_ADT_A45	Move Visit Information - Visit Number
HL7_23_ADT_A46	Change Patient ID
HL7_23_ADT_A47	Change Patient Identifier List

HL7 2.3 Segment	HL7 Description
HL7_23_ADT_A48	Change Alternate
HL7_23_ADT_A49	Change Patient Account Number
HL7_23_ADT_A50	Change Visit Number
HL7_23_ADT_A51	Change Alternate Visit ID
HL7_23_AIG	Segment Message Library
HL7_23_AIL	Segment Message Library
HL7_23_AIP	Segment Message Library
HL7_23_AIS	Segment Message Library
HL7_23_AL1	Segment Message Library
HL7_23_APR	Segment Message Library
HL7_23_ARQ	Segment Message Library
HL7_23_AUT	Segment Message Library
HL7_23_BAR_P01	Add Patient Account
HL7_23_BAR_P02	Purge Patient Accounts
HL7_23_BAR_P05	Update Account
HL7_23_BAR_P06	End Account
HL7_23_BLG	Segment Message Library
HL7_23_CDM	Segment Message Library
HL7_23_CM0	Segment Message Library
HL7_23_CM1	Segment Message Library
HL7_23_CM2	Segment Message Library
HL7_23_CRM_C01	Register a Patient on a Clinical Trial
HL7_23_CRM_C02	Cancel a Patient Registration on Clinical Trial
HL7_23_CRM_C03	Correct/Update Registration Information
HL7_23_CRM_C04	Patient has Gone Off a Clinical Trial
HL7_23_CRM_C05	Patient Enters Phase of Clinical Trial
HL7_23_CRM_C06	Cancel Patient Entering a Phase
HL7_23_CRM_C07	Correct/Update Phase Information

HL7 2.3 Segment	HL7 Description
HL7_23_CRM_C08	Patient has Gone Off Phase of Clinical Trial
HL7_23_CSP	Segment Message Library
HL7_23_CSR	Segment Message Library
HL7_23_CSS	Segment Message Library
HL7_23_CSU_C09	Automated Time Intervals for Reporting, Like Monthly
HL7_23_CSU_C10	Patient Completes the Clinical Trial
HL7_23_CSU_C11	Patient Completes a Phase of the Clinical Trial
HL7_23_CSU_C12	Update/Correction of Patient Order/Result Information
HL7_23_CTD	Segment Message Library
HL7_23_CTI	Segment Message Library
HL7_23_DB1	Segment Message Library
HL7_23_DFT_P03	Post Detail Financial Transactions
HL7_23_DG1	Segment Message Library
HL7_23_DOC_T12	Segment Message Library
HL7_23_DRG	Segment Message Library
HL7_23_DSC	Segment Message Library
HL7_23_DSP	Segment Message Library
HL7_23_DSR_Q01	Segment Message Library
HL7_23_DSR_Q03	Deferred Response to a Query
HL7_23_EDR_Q01	Enhanced Display Response
HL7_23_EQL	Segment Message Library
HL7_23_EQQ_Q01	Embedded Query Language Query
HL7_23_ERP_Q01	Event Replay Response
HL7_23_EQR	Segment Message Library
HL7_23_ERR	Segment Message Library
HL7_23_EVN	Segment Message Library
HL7_23_FAC	Segment Message Library
HL7_23_FT1	Segment Message Library

HL7 2.3 Segment	HL7 Description
HL7_23_GOL	Segment Message Library
HL7_23_GT1	Segment Message Library
HL7_23_IN1	Segment Message Library
HL7_23_IN2	Segment Message Library
HL7_23_IN3	Segment Message Library
HL7_23_LCC	Segment Message Library
HL7_23_LCH	Segment Message Library
HL7_23_LDP	Segment Message Library
HL7_23_LOC	Segment Message Library
HL7_23_LRL	Segment Message Library
HL7_23_MDM_T01	Original Document Notification
HL7_23_MDM_T02	Original Document Notification and Content
HL7_23_MDM_T03	Document Status Change Notification
HL7_23_MDM_T04	Document Status Change Notification and Content
HL7_23_MDM_T05	Document Addendum Notification
HL7_23_MDM_T06	Document Addendum Notification and Content
HL7_23_MDM_T07	Document Edit Notification
HL7_23_MDM_T08	Document Edit Notification and Content
HL7_23_MDM_T09	Document Replacement Notification
HL7_23_MDM_T10	Document Replacement Notification and Content
HL7_23_MDM_T11	Document Cancel Notification
HL7_23_MFA	Segment Message Library HL7_23_MFE Segment
HL7_23_MFI	Segment Message Library
HL7_23_MFK_M01	Segment Message Library
HL7_23_MFK_M02	Segment Message Library
HL7_23_MFK_M03	Segment Message Library
HL7_23_MFK_M04	Segment Message Library
HL7_23_MFK_M05	Segment Message Library

HL7 2.3 Segment	HL7 Description
HL7_23_MFK_M06	Segment Message Library
HL7_23_MFK_M07	Segment Message Library
HL7_23_MFK_M08	Segment Message Library
HL7_23_MFK_M09	Segment Message Library
HL7_23_MFK_M10	Segment Message Library
HL7_23_MFK_M11	Segment Message Library
HL7_23_MFN_M01	Master File Notification
HL7_23_MFN_M02	Staff/Practitioner Master File Message
HL7_23_MFN_M03	Master File Notification - Test/Observation
HL7_23_MFN_M04	Charge Description Master File Message
HL7_23_MFN_M05	Patient Location Master File Message
HL7_23_MFN_M06	Clinical Trials Master File Message (Identifier Code CMA)
HL7_23_MFN_M07	Clinical Trials Master File Message (Identifier Code CMB)
HL7_23_MFN_M08	Master File Notification - Test/Observation (Numeric)
HL7_23_MFN_M09	Master File Notification - Test/Observation (Categorical)
HL7_23_MFN_M10	Master File Notification - Test/Observation Batteries
HL7_23_MFN_M11	Master File Notification - Test/Calculated Observations
HL7_23_MRG	Segment Message Library
HL7_23_MSA	Segment Message Library
HL7_23_MSH	Segment Message Library
HL7_23_NK1	Segment Message Library
HL7_23_NPU	Segment Message Library
HL7_23_NTE	Segment Message Library
HL7_23_OBR	Segment Message Library
HL7_23_OBX	Segment Message Library
HL7_23_ODS	Segment Message Library
HL7_23_ODT	Segment Message Library
HL7_23_OM1	Segment Message Library

HL7 2.3 Segment	HL7 Description
HL7_23_OM2	Segment Message Library
HL7_23_OM3	Segment Message Library
HL7_23_OM4	Segment Message Library
HL7_23_OM5	Segment Message Library
HL7_23_OM6	Segment Message Library
HL7_23_OMD_O01	Dietary Order
HL7_23_OMN_O01	Non-Stock Requisition Order Message
HL7_23_OMS_O01	Stock Requisition Order Message
HL7_23_ORC	Segment Message Library
HL7_23_ORD_O02	Dietary Order Acknowledgment Message
HL7_23_ORF_R04	Segment Message Library
HL7_23_ORM_O01	Pharmacy/Treatment Order Message
HL7_23_ORN_O02	General Order Acknowledgment Message
HL7_23_ORR_O02	General Order Response Message Response to any ORM
HL7_23_ORU_R01	Unsolicited Transmission of an Observation Message
HL7_23_OSQ_Q06	Query Response for Order Status
HL7_23_OSR_Q06	Segment Message Library
HL7_23_PCR	Segment Message Library
HL7_23_PD1	Segment Message Library
HL7_23_PDC	Segment Message Library
HL7_23_PEO	Segment Message Library
HL7_23_PES	Segment Message Library
HL7_23_PEX_P07	Unsolicited Initial Individual Product Experience Report
HL7_23_PEX_P08	Unsolicited Update Individual Product Experience Report
HL7_23_PGL_PC6	Patient Goal Message - Goal Add
HL7_23_PGL_PC7	Patient Goal Message - Goal Update
HL7_23_PGL_PC8	Patient Goal Message - Goal Delete
HL7_23_PID	Segment Message Library

HL7 2.3 Segment	HL7 Description
HL7_23_PIN_I07	Patient Insurance Information - Unsolicited
HL7_23_PPG_PCG	Pathway (Goal-Oriented) Add
HL7_23_PPG_PCH	Pathway (Goal-Oriented) Update
HL7_23_PPG_PCJ	Pathway (Goal-Oriented) Delete
HL7_23_PPP_PCB	Pathway (Problem-Oriented) Add
HL7_23_PPP_PCC	Pathway (Problem-Oriented) Update
HL7_23_PPP_PCD	Pathway (Problem-Oriented) Delete
HL7_23_PPR_PC1	Problem Add
HL7_23_PPR_PC2	Problem Update
HL7_23_PPR_PC3	Problem Delete
HL7_23_PPT_PCL	Pathway (Goal-Oriented) Query Response
HL7_23_PPV_PCA	Goal Response
HL7_23_PR1	Segment Message Library
HL7_23_PRA	Segment Message Library
HL7_23_PRB	Segment Message Library
HL7_23_PRC	Segment Message Library
HL7_23_PRD	Segment Message Library
HL7_23_PRR_PC5	Problem Response
HL7_23_PSH	Segment Message Library
HL7_23_PTH	Segment Message Library
HL7_23_PTR_PCF	Pathway (Problem-Oriented) Query Response
HL7_23_PV1	Segment Message Library
HL7_23_PV2	Segment Message Library
HL7_23_QAK	Segment Message Library
HL7_23_QCK_Q02	Segment Message Library
HL7_23_QRD	Segment Message Library
HL7_23_QRF	Segment Message Library
HL7_23_QRY_A19	Patient Query

HL7 2.3 Segment	HL7 Description
HL7_23_QRY_PC4	Problem Query
HL7_23_QRY_PC9	Goal Query
HL7_23_QRY_PCE	Pathway (Problem-Oriented) Query
HL7_23_QRY_PCK	Pathway (Goal-Oriented) Query
HL7_23_QRY_Q01	Query Sent for Immediate Response
HL7_23_QRY_Q02	Query Sent for Deferred Response
HL7_23_QRY_R02	Query for Results of Observation
HL7_23_QRY_T12	Document Query
HL7_23_RAR_RAR	Pharmacy Administration Information
HL7_23_RAS_O01	Pharmacy/Treatment Administration Order Message
HL7_23_RCI_I05	Segment Message Library
HL7_23_RCL_I06	Segment Message Library
HL7_23_RDE_O01	Pharmacy/Treatment Encoded Order Message
HL7_23_RDF	Segment Message Library
HL7_23_RDO_O01	Pharmacy/Treatment Order Message
HL7_23_RDR_RDR	Pharmacy/Treatment Dispense Information
HL7_23_RDS_O01	Pharmacy/Treatment Dispense Order Message
HL7_23_RDT	Segment Message Library
HL7_23_REF_I12	Patient Referral
HL7_23_REF_I13	Modify Patient Referral
HL7_23_REF_I14	Cancel Patient Referral
HL7_23_REF_I15	Request Patient Referral Status
HL7_23_RER_RER	Pharmacy/Treatment Encoded Order Information
HL7_23_RF1	Segment Message Library
HL7_23_RGR_RGR	Pharmacy/Treatment Dose Information
HL7_23_RGS	Segment Message Library
HL7_23_RGV_O01	Pharmacy/Treatment Give - Order Message
HL7_23_ROL	Segment Message Library

HL7 2.3 Segment	HL7 Description
HL7_23_ROR_ROR	Pharmacy/Treatment Order Response
HL7_23_RPA_I08	Segment Message Library
HL7_23_RPA_I09	Segment Message Library
HL7_23_RPA_I10	Segment Message Library
HL7_23_RPA_I11	Segment Message Library
HL7_23_RPI_I01	Segment Message Library
HL7_23_RPI_I04	Segment Message Library
HL7_23_RPL_I02	Segment Message Library
HL7_23_RPR_I03	Segment Message Library
HL7_23_RQ1_I	Segment Message Library
HL7_23_RQA_I08	Request for Treatment Authorization Information
HL7_23_RQA_I09	Request for Modification to an Authorization
HL7_23_RQA_I10	Request for Re-submission of an Authorization
HL7_23_RQA_I11	Request for Cancellation of an Authorization
HL7_23_RQC_I05	Request for Patient Clinical Information
HL7_23_RQC_I06	Request/Receipt of Clinical Data Listing
HL7_23_RQD	Segment Message Library
HL7_23_RQI_I01	Request for Insurance Information
HL7_23_RQI_I02	Request/Receipt of Patient Selection Display List
HL7_23_RQI_I03	Request/Receipt of Patient Selection List
HL7_23_RQP_I04	Request for Patient Demographic Data
HL7_23_RQQ_Q01	Event replay query - Sent for Immediate Response
HL7_23_RRA_O02	Pharmacy/Treatment Administration Acknowledgment Message
HL7_23_RRD_O02	Pharmacy/Treatment Dispense Acknowledgment Message
HL7_23_RRG_O02	Pharmacy/Treatment Give Acknowledgment Message
HL7_23_RRI_I12	Segment Message Library
HL7_23_RRI_I13	Segment Message Library
HL7_23_RRI_I14	Segment Message Library

HL7 2.3 Segment	HL7 Description
HL7_23_RRI_I15	Segment Message Library
HL7_23_RRO_O02	ORR Message for Pharmacy/Treatment - Order Response
HL7_23_RXA	Segment Message Library
HL7_23_RXC	Segment Message Library
HL7_23_RXD	Segment Message Library
HL7_23_RXE	Segment Message Library
HL7_23_RXG	Segment Message Library
HL7_23_RXO	Segment Message Library
HL7_23_RXR	Segment Message Library
HL7_23_SCH	Segment Message Library
HL7_23_SIU_S12	Schedule Information Unsolicited - Notification of new appointment booking
HL7_23_SIU_S13	Schedule Information Unsolicited - Notification of Appointment Rescheduling
HL7_23_SIU_S14	Schedule Information Unsolicited - Notification of Appointment Modification
HL7_23_SIU_S15	Schedule Information Unsolicited - Notification of Appointment Cancellation
HL7_23_SIU_S16	Schedule Information Unsolicited - Notification of Appointment Discontinuation
HL7_23_SIU_S17	Schedule Information Unsolicited - Notification of Appointment Deletion
HL7_23_SIU_S18	Schedule Information Unsolicited - Notification of Addition of Service/Resource on Appointment
HL7_23_SIU_S19	Schedule Information Unsolicited - Notification of Modification of Service/Resource on Appointment
HL7_23_SIU_S20	Schedule Information Unsolicited - Notification of Cancellation of Service/Resource on Appointment
HL7_23_SIU_S21	Schedule Information Unsolicited - Notification of Discontinuation of Service/Resource on Appointment
HL7_23_SIU_S22	Schedule Information Unsolicited - Notification of Deletion of Service/Resource on Appointment
HL7_23_SIU_S23	Schedule Information Unsolicited - Notification of Blocked Schedule Time Slot(s)

HL7 2.3 Segment	HL7 Description
HL7_23_SIU_S24	Schedule Information Unsolicited - Notification of Opened (_unblocked_) Schedule Time Slot(s)
HL7_23_SIU_S26	Schedule Information Unsolicited - Notification that Patient did Not Show Up for Schedule Appointment
HL7_23_SPQ_Q01	Stored Procedure Request HL7_23_SPR Segment Message Library
HL7_23_SQM_S25	Schedule Query Message and Response
HL7_23_SQR_S25	Segment Message Library
HL7_23_SRM_S01	Schedule Request Message - Request New Appointment Booking
HL7_23_SRM_S02	Schedule Request Message - Request Appointment Rescheduling
HL7_23_SRM_S03	Schedule Request Message - Request Appointment Modification
HL7_23_SRM_S04	Schedule Request Message - Request Appointment Cancellation
HL7_23_SRM_S05	Schedule Request Message - Request Appointment Discontinuation
HL7_23_SRM_S06	Schedule Request Message - Request Appointment Deletion
HL7_23_SRM_S07	Schedule Request Message - Request Addition of Service/Resource on Appointment
HL7_23_SRM_S08	Schedule Request Message - Request Modification of Service/ Resource on Appointment
HL7_23_SRM_S09	Schedule Request Message - Request Cancellation of Service/ Resource on Appointment
HL7_23_SRM_S10	Schedule Request Message - Request Discontinuation of Service/ Resource on Appointment
HL7_23_SRM_S11	Schedule Request Message - Request Deletion of Service/Resource on Appointment
HL7_23_SRR_S01	Segment Message Library
HL7_23_SRR_S02	Segment Message Library
HL7_23_SRR_S03	Segment Message Library
HL7_23_SRR_S04	Segment Message Library
HL7_23_SRR_S05	Segment Message Library
HL7_23_SRR_S06	Segment Message Library
HL7_23_SRR_S07	Segment Message Library
HL7_23_SRR_S08	Segment Message Library

HL7 2.3 Segment	HL7 Description
HL7_23_SRR_S09	Segment Message Library
HL7_23_SRR_S10	Segment Message Library
HL7_23_SRR_S11	Segment Message Library
HL7_23_STF	Segment Message Library
HL7_23_SUR_P09	Summary Product Experience Report
HL7_23_TBR_Q01	Tabular Data Response
HL7_23_TXA	Segment Message Library
HL7_23_UB1	Segment Message Library
HL7_23_UB2	Segment Message Library
HL7_23_UDM_Q05	Unsolicited Display Update Message
HL7_23_URD	Segment Message Library
HL7_23_URS	Segment Message Library
HL7_23_VAR	Segment Message Library
HL7_23_VQQ_Q01	Virtual Table Query
HL7_23_VTQ_H	Segment Message Library
L7_23_VXQ_V01	Query for Vaccination Record
HL7_23_VXR_V03	Vaccination Record Response
HL7_23_VXU_V04	Unsolicited Vaccination Record Update
HL7_23_VXX_V02	Response to Vaccination Query Returning Multiple PID Matches

HL7 Version 2.2 Message Library Structure

The following table describes the HL7 Version 2.2 Message Library.

HL7 2.2 Segment	HL7 Description
HL7_22_ACC	Segment Message Library
HL7_22_ACK	Segment Message Library
HL7_22_ADR_A19	Segment Message Library
HL7_22_ADT_A01	Admit/Visit Notification

HL7 2.2 Segment	HL7 Description
HL7_22_ADT_A02	Transfer a Patient
HL7_22_ADT_A03	Discharge/End Visit
HL7_22_ADT_A04	Register a Patient
HL7_22_ADT_A05	Pre- Admit a Patient
HL7_22_ADT_A06	Change an Outpatient to an Inpatient
HL7_22_ADT_A07	Change an Inpatient to an Outpatient
HL7_22_ADT_A08	Update Patient Information
HL7_22_ADT_A09	Patient Departing - Tracking
HL7_22_ADT_A10	Patient Arriving - Tracking
HL7_22_ADT_A11	Cancel Admit/Visit Notification
HL7_22_ADT_A12	Cancel Transfer
HL7_22_ADT_A13	Cancel Discharge/End Visit
HL7_22_ADT_A14	Pending Admit
HL7_22_ADT_A15	Pending Transfer
HL7_22_ADT_A16	Pending Discharge
HL7_22_ADT_A17	Swap Patients
HL7_22_ADT_A18	Merge Patient Information
HL7_22_ADT_A20	Bed Status Update
HL7_22_ADT_A21	Patient Goes on a Leave of Absence
HL7_22_ADT_A22	Patient Returns from a Leave of Absence
HL7_22_ADT_A23	Delete a Patient Record
HL7_22_ADT_A24	Link Patient Information
HL7_22_ADT_A25	Cancel Pending Discharge
HL7_22_ADT_A26	Cancel Pending Transfer
HL7_22_ADT_A27	Cancel Pending Admit
HL7_22_ADT_A28	Add Person or Patient Information
HL7_22_ADT_A29	Delete Person Information
HL7_22_ADT_A30	Merge Person Information

HL7 2.2 Segment	HL7 Description
HL7_22_ADT_A31	Update Person Information
HL7_22_ADT_A32	Cancel Patient Arriving - Tracking
HL7_22_ADT_A33	Cancel Patient Departing - Tracking
HL7_22_ADT_A34	Merge Patient Information - Patient ID Only
HL7_22_ADT_A35	Merge Patient Information - Account Number Only
HL7_22_ADT_A36	Merge Patient Information - Patient ID & Account Number
HL7_22_ADT_A37	Unlink Patient Information
HL7_22_AL1	Segment Message Library
HL7_22_BAR_P01	Add Patient Account
HL7_22_BAR_P02	Purge Patient Accounts
HL7_22_BLG	Segment Message Library
HL7_22_DFT_P03	Post Detail Financial Transactions
HL7_22_DG1	Segment Message Library
HL7_22_DSC	Segment Message Library
HL7_22_DSP	Segment Message Library
HL7_22_DSR_P04	Segment Message Library
HL7_22_DSR_Q01	Segment Message Library
HL7_22_DSR_Q03	Deferred Response to a Query
HL7_22_DSR_R03	Display-Oriented Results, Query/Unsol. Update (for Backward Compatibility Only)
HL7_22_ERR	Segment Message Library
HL7_22_EVN	Segment Message Library
HL7_22_FT1	Segment Message Library
HL7_22_GT1	Segment Message Library
HL7_22_IN1	Segment Message Library
HL7_22_IN2	Segment Message Library
HL7_22_IN3	Segment Message Library
HL7_22_MFA	Segment Message Library

HL7 2.2 Segment	HL7 Description
HL7_22_MFD_M01	Master Files Delayed Application Acknowledgment - Not Otherwise Specified (for Backward Compatibility Only)
HL7_22_MFD_M02	Master Files Delayed Application Acknowledgment - Staff Practitioner
HL7_22_MFD_M03	Master Files Delayed Application Acknowledgment - Test/ Observation (for Backward Compatibility Only)
HL7_22_MFE	Segment Message Library
HL7_22_MFI	Segment Message Library
HL7_22_MFK_M01	Segment Message Library
HL7_22_MFK_M02	Segment Message Library
HL7_22_MFK_M03	Segment Message Library
HL7_22_MFN_M01	Master File Notification - Master File Not Otherwise Specified
HL7_22_MFN_M02	Staff/Practitioner Master File Message
HL7_22_MFN_M03	Master File Notification - Test/Observation
HL7_22_MFQ_M01	Master Files Query - Not Otherwise Specified (for backward compatibility only)
HL7_22_MFQ_M02	Master Files Query - Staff/Practitioner
HL7_22_MFQ_M03	Master Files Query - Test/Observation (for backward compatibility only)
HL7_22_MFR_M01	Segment Message Library
HL7_22_MFR_M02	Segment Message Library
HL7_22_MFR_M03	Segment Message Library
HL7_22_MRG	Segment Message Library
HL7_22_MSA	Segment Message Library
HL7_22_MSH	Segment Message Library
HL7_22_NCK	Segment Message Library
HL7_22_NK1	Segment Message Library
HL7_22_NMD_N01	Application Management Data Message
HL7_22_NMQ_N02	Application Management Query Message
HL7_22_NMR_N02	Segment Message Library
HL7_22_NPU	Segment Message Library

HL7 2.2 Segment	HL7 Description
HL7_22_NSC	Segment Message Library
HL7_22_NST	Segment Message Library
HL7_22_NTE	Segment Message Library
HL7_22_OBR	Segment Message Library
HL7_22_OBX	Segment Message Library
HL7_22_ODS	Segment Message Library
HL7_22_ODT	Segment Message Library
HL7_22_ORC	Segment Message Library
HL7_22_ORF_R04	Response to Query; Transmission of Requested Observation
HL7_22_ORM_O01	Pharmacy/Treatment - Order Message
HL7_22_ORR_O02	Pharmacy/Treatment - Order Response
HL7_22_ORU_R01	Unsolicited Transmission of an Observation Message
HL7_22_PID	Segment Message Library
HL7_22_PR1	Segment Message Library
HL7_22_PV1	Segment Message Library
HL7_22_PV2	Segment Message Library
HL7_22_QRD	Segment Message Library
HL7_22_QRF	Segment Message Library
HL7_22_QRY_A19	Patient Query
HL7_22_QRY_P04	Generate Bill and A/R Statements
HL7_22_QRY_Q01	Query Sent for Immediate Response
HL7_22_QRY_Q02	Query Sent for Deferred Response
HL7_22_QRY_R02	Unsolicited Transmission of an Observation Message
HL7_22_RQ1	Segment Message Library
HL7_22_RQD	Segment Message Library
HL7_22_RXO	Segment Message Library
HL7_22_UB1	Segment Message Library
HL7_22_UB2	Segment Message Library

HL7 2.2 Segment	HL7 Description
HL7_22_UDM_Q05	Unsolicited Display Update Message
HL7_22_URD	Segment Message Library
HL7_22_URS	Segment Message Library

HL7 Version 2.1 Message Library Structure

The following table describes the HL7 Version 2.1 Message Library.

HL7 2.1 Segment	HL7 Description
HL7_21_ADT_A01	Admit/Visit Notification
HL7_21_ADT_A02	Transfer a Patient
HL7_21_ADT_A03	Discharge/End Visit
HL7_21_ADT_A04	Register a Patient
HL7_21_ADT_A05	Pre-Admit a Patient
HL7_21_ADT_A06	Change an Outpatient to an Inpatient
HL7_21_ADT_A07	Change an Inpatient to an Outpatient
HL7_21_ADT_A08	Update Patient Information
HL7_21_ADT_A09	Patient Departing - Tracking
HL7_21_ADT_A10	Patient Arriving - Tracking
HL7_21_ADT_A11	Cancel Admit/Visit Notification
HL7_21_ADT_A12	Cancel Transfer
HL7_21_ADT_A13	Cancel Discharge/End Visit
HL7_21_ADT_A14	Pending Admit
HL7_21_ADT_A15	Pending Transfer
HL7_21_ADT_A16	Pending Discharge
HL7_21_ADT_A17	Swap Patients
HL7_21_ADT_A18	Merge Patient Information
HL7_21_ADT_A20	Bed Status Update
HL7_21_ADT_A21	Patient Goes on a Leave of Absence

HL7 2.1 Segment	HL7 Description
HL7_21_ADT_A22	Patient Returns from a Leave of Absence
HL7_21_ADT_A23	Delete a Patient Record
HL7_21_ADT_A24	Link Patient Information
HL7_21_BAR_P01	Add Patient Account
HL7_21_BAR_P02	Purge Patient Accounts
HL7_21_BLG	Segment Message Library
HL7_21_DFT_P03	Post Detail Financial Transactions
HL7_21_DG1	Segment Message Library
HL7_21_DSC	Segment Message Library
HL7_21_DSP	Segment Message Library
HL7_21_DSR_Q01	Segment Message Library
HL7_21_DSR_Q03	Deferred Response to a Query
HL7_21_ERR	Segment Message Library
HL7_21_EVN	Segment Message Library
HL7_21_FT1	Segment Message Library
HL7_21_GT1	Segment Message Library
HL7_21_IN1	Segment Message Library
HL7_21_MCF	Segment Message Library
HL7_21_MRG	Segment Message Library
HL7_21_MSA	Segment Message Library
HL7_21_MSH	Segment Message Library
HL7_21_NK1	Segment Message Library
HL7_21_NPU	Segment Message Library
HL7_21_NTE	Segment Message Library
HL7_21_OBR	Segment Message Library
HL7_21_OBX	Segment Message Library
HL7_21_ORC	Segment Message Library
HL7_21_ORM_O01	Pharmacy/Treatment Order Message

HL7 2.1 Segment	HL7 Description
HL7_21_ORO	Segment Message Library
HL7_21_ORR_O02	General Order Response Message Response to any ORM HL7_21_ORU_R01 Unsolicited Transmission of an Observation Message
HL7_21_ORU_R03	Unsolicited Transmission of an Observation Message
HL7_21_PID	Segment Message Library
HL7_21_PRI	Segment Message Library
HL7_21_PV1	Segment Message Library
HL7_21_QRD	Segment Message Library
HL7_21_QRF	Segment Message Library
HL7_21_QRY_A19	Patient Query
HL7_21_QRY_Q01	Query Sent for Immediate Response
HL7_21_QRY_Q02	Query Sent for Deferred Response
HL7_21_RX1	Segment Message Library
HL7_21_UB1	Segment Message Library
HL7_21_UDM_Q05	Unsolicited Display Update Message
HL7_21_URD	Segment Message Library
HL7_21_URS	Segment Message Library