



Using Enterprise Manager Management Application in Java CAPS



Sun Microsystems, Inc.
4150 Network Circle
Santa Clara, CA 95054
U.S.A.

Part No: 820-3395
June 2008

Copyright 2008 Sun Microsystems, Inc. 4150 Network Circle, Santa Clara, CA 95054 U.S.A. All rights reserved.

Sun Microsystems, Inc. has intellectual property rights relating to technology embodied in the product that is described in this document. In particular, and without limitation, these intellectual property rights may include one or more U.S. patents or pending patent applications in the U.S. and in other countries.

U.S. Government Rights – Commercial software. Government users are subject to the Sun Microsystems, Inc. standard license agreement and applicable provisions of the FAR and its supplements.

This distribution may include materials developed by third parties.

Parts of the product may be derived from Berkeley BSD systems, licensed from the University of California. UNIX is a registered trademark in the U.S. and other countries, exclusively licensed through X/Open Company, Ltd.

Sun, Sun Microsystems, the Sun logo, the Solaris logo, the Java Coffee Cup logo, docs.sun.com, Java, and Solaris are trademarks or registered trademarks of Sun Microsystems, Inc. or its subsidiaries in the U.S. and other countries. All SPARC trademarks are used under license and are trademarks or registered trademarks of SPARC International, Inc. in the U.S. and other countries. Products bearing SPARC trademarks are based upon an architecture developed by Sun Microsystems, Inc.

The OPEN LOOK and SunTM Graphical User Interface was developed by Sun Microsystems, Inc. for its users and licensees. Sun acknowledges the pioneering efforts of Xerox in researching and developing the concept of visual or graphical user interfaces for the computer industry. Sun holds a non-exclusive license from Xerox to the Xerox Graphical User Interface, which license also covers Sun's licensees who implement OPEN LOOK GUIs and otherwise comply with Sun's written license agreements.

Products covered by and information contained in this publication are controlled by U.S. Export Control laws and may be subject to the export or import laws in other countries. Nuclear, missile, chemical or biological weapons or nuclear maritime end uses or end users, whether direct or indirect, are strictly prohibited. Export or reexport to countries subject to U.S. embargo or to entities identified on U.S. export exclusion lists, including, but not limited to, the denied persons and specially designated nationals lists is strictly prohibited.

DOCUMENTATION IS PROVIDED "AS IS" AND ALL EXPRESS OR IMPLIED CONDITIONS, REPRESENTATIONS AND WARRANTIES, INCLUDING ANY IMPLIED WARRANTY OF MERCHANTABILITY, FITNESS FOR A PARTICULAR PURPOSE OR NON-INFRINGEMENT, ARE DISCLAIMED, EXCEPT TO THE EXTENT THAT SUCH DISCLAIMERS ARE HELD TO BE LEGALLY INVALID.

Contents

1	Using Enterprise Manager Management Applications in Java CAPS	5
	Management Applications Overview	5
	Management Applications Task Overview	5
	Displaying Management Application Tabs	6
	▼ To Start the Enterprise Manager Security Gateway	6
	▼ To Display the Configuration Tabs	6
	Setting Up the User Preferences	7
	▼ To Set Up the User Preferences	7
	Displaying Web Routing Manager	8
	▼ To Display the Web Routing Information	8
	▼ To Change the Management Application for an Object Type	9
	Displaying Web Applications Manager	10
	Automatically Install From the Repository	10
	Managing Applications	13
	Managing the Existing Management Applications	14
	Deploying New Management Applications	14
	▼ To Deploy a New Management Application	15
	Managing Alert Codes	15
	Properties File Format	16
	Uploading the Properties File	16
	Removing Alert Codes	17

Using Enterprise Manager Management Applications in Java CAPS

The following sections provide instructions on how to Use Enterprise Manager Management Applications in Java CAPS. If you have any questions or problems, see the Java CAPS web site at <http://goldstar.stc.com/support>.

This chapter covers the following topics

- “Management Applications Overview” on page 5
- “Management Applications Task Overview” on page 5
- “Displaying Management Application Tabs” on page 6
- “Setting Up the User Preferences” on page 7
- “Displaying Web Routing Manager” on page 8
- “Displaying Web Applications Manager” on page 10
- “Managing Applications” on page 13
- “Managing Alert Codes” on page 15

Management Applications Overview

Management Application is composed of various management applications. Management Application enables you to manage these applications and to deploy new ones.

Management Applications Task Overview

The task included in this section allows you to perform the following,

- “To Start the Enterprise Manager Security Gateway” on page 6
- “To Change the Management Application for an Object Type” on page 9
- “To Start a Management Application” on page 14
- “To Stop a Management Application” on page 14
- “To Reload a Management Application” on page 14
- “To Undeploy a Management Application” on page 14

- “To Deploy a New Management Application” on page 15
- “To Upload the Properties File” on page 16
- “To Remove Alert Codes” on page 17

Displaying Management Application Tabs

The procedures must be performed by an Enterprise Manager user who has been assigned the role of a Manager.

▼ To Start the Enterprise Manager Security Gateway

- 1 Start the Enterprise Manager.
- 2 Open a supported web browser and type the following URL
`http://hostname:port`
- 3 When the login page appears, enter the User ID and the Password.

Note – The default User ID is *admin* and the default Password is *adminadmin*.

- 4 Click Login to work with the Enterprise Manager Security Gateway.

▼ To Display the Configuration Tabs

- 1 In the Explorer panel of Java CAPS Enterprise Manager, click the Configuration icon.

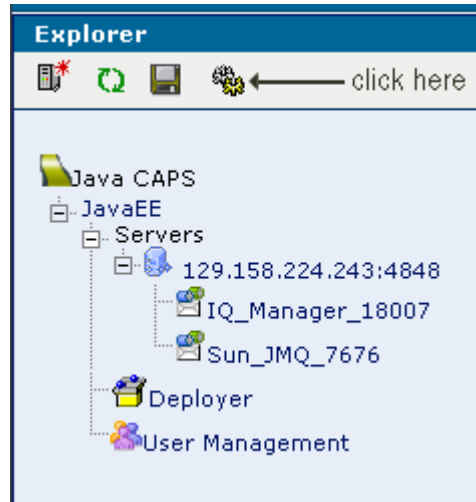


FIGURE 1-1 Configuration Icon

The following tabs are displayed,

- User Preferences
- Web Routing Manager
- Web Applications Manager

- 2 Click each one of the tabs to perform a task related operation.

Setting Up the User Preferences

Browsers usually allow you to specify preferences, for example, browser refresh rate. The User Preferences page is a special page, comprising of options, which allow a user to personalize the settings.

▼ To Set Up the User Preferences

Perform the following to set up the preferences,

- 1 **Browser Refresh Rate (in seconds)**
Set the browser to refresh the current web page contents, so that it stays up-to-date.
 - a. Enter the time (in seconds).

b. Click Submit.

The page is refreshed as per the specified time.

2 Choose any one or both of the following preferences,

a. Disable Browser Auto Refresh

Choose this option to disable the browser from automatically refreshing the current web page contents.

b. Keep Enterprise Manager Alive (No Timeout)

The security feature of the Enterprise Manager ensures that the browser periodically times out after a certain period of inactivity.

Checking this option keeps the connection to the Enterprise Manager alive for as long as the user is logged on.

Note – Choosing both the options, will enable only the first option, by default.

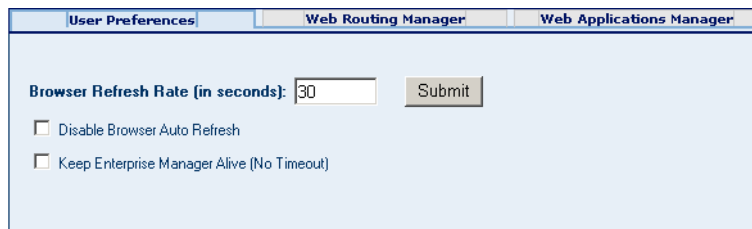


FIGURE 1-2 User Preferences Tab

Displaying Web Routing Manager

You can view and change the management applications that handle various object types. You can use this feature as a diagnostic tool to display the web routing information.

▼ To Display the Web Routing Information

● **Click the Web Routing Manager tab.**

The routing information appears in the Details panel.

Type *

Location *

Type	Location
jms50x	/jmsMonitor/MessagesNext.do
png	/graphicsRenderer
is51x	/rtcMonitor/RTCMonitor.do
svg	/graphicsRenderer
jpg	/graphicsRenderer
alertProvider51x	/alerts/AlertsDisplay.do
deployment51x	http://s0034108893:15000/depolyer/depolyer.do
management51x	http://s0034108893:15000/management/AutoInstall.do
collab51x	/rtcMonitor/RTCMonitor.do
sj51x	http://s0034108893:15000/rtcMonitor/RTCMonitor.do
jboss51x	/rtcMonitor/RTCMonitor.do
cm51x	/cm/CM.do
jce.JavaCollaborationDefinition	/rtcMonitor/RTCMonitor.do
SCHEDULEROTDADAPTER.EXTERNALAPPLICATION.LINK	/rtcMonitor/RTCMonitor.do
loggable45x	/logging/LogDisplay.do
messageService.Queue	/jmsMonitor/MessagesNext.do
SCHEDULEROTDADAPTER.ExternalApplication.LINK	/rtcMonitor/RTCMonitor.do
wf51x	/rtcMonitor/RTCMonitor.do
file51xEWay	/rtcMonitor/RTCMonitor.do
alertProvider50x	/alerts/AlertsDisplay.do
genericTreeManager	http://s0034108893:15000/treeManager/TreeManager.do
SCHEDULEROTDADAPTER.ExternalApplication	/rtcMonitor/RTCMonitor.do

FIGURE 1-3 Web Routing Information

Figure 1-3 contains the following fields.

- a. The Type column lists the object types.
- b. The Location column lists the URL of the management application that handles the corresponding object types.

▼ To Change the Management Application for an Object Type

- 1 In the Type field, enter the object type.

Note – This field is mandatory.

- 2 In the Location field, enter the URL of the management application that you want to handle the corresponding object type.

Note – This field is mandatory.

3 Click Insert.

Displaying Web Applications Manager

The following tabs appear below the Web Applications Manager tab.

1. Auto-Install from Repository
2. Manage Applications
3. Manage Alert Codes

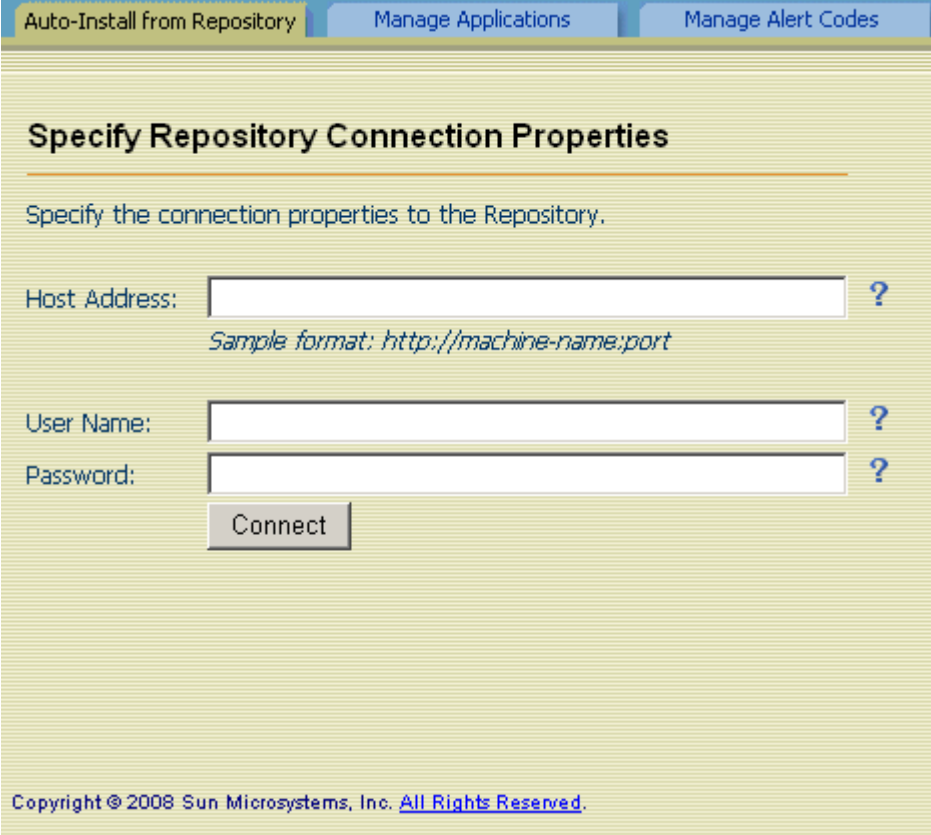
Automatically Install From the Repository

Perform the following steps.

1. From Enterprise Manager, navigate to the Auto-Install from Repository tab.
2. Connect to the Repository, select the application, and deploy it.

The Auto-Install from Repository tab enables you to install components that are available from the Repository. Typically, the components are the Enterprise Manager plug-ins for various Java CAPS products. You should first connect to the Repository, and then specify, which components to install.

Note – This page allows you to specify the connection properties to the Repository.



Auto-Install from Repository Manage Applications Manage Alert Codes

Specify Repository Connection Properties

Specify the connection properties to the Repository.

Host Address: ?
Sample format: http://machine-name:port

User Name: ?

Password: ?

Copyright © 2008 Sun Microsystems, Inc. [All Rights Reserved.](#)

FIGURE 1-4 Auto-Install From Repository Tab

▼ To Automatically Install Components From the Repository

- 1 In the Host Address field, enter the URL that is used to connect to the Repository.

Note – For example, `http://machine-name:port`

- 2 In the User Name field, enter the Repository user name.

Note – The default User Name is *admin*

- 3 In the Password field, enter the corresponding password.

Note – The default Password is *adminadmin*

4 Click Connect.

The available management applications are displayed.

Note – The list includes any management applications that are already installed.



FIGURE 1-5 Available Management Applications

5 In the row that lists the application, select the check box.

Note – You can select more than one check box. This enables you to install more than one application.

6 Click Install.

After the installation process is complete, the Results area indicates whether the installation is successful.

Managing Applications

The Manage Applications tab displays the management applications that are deployed in Enterprise Manager.

Perform the following steps.

1. From the Installer, click the application and save it to a temporary directory.
2. From Enterprise Manager, navigate to Manage Applications tab.
3. Click Browse to select the application file and click Deploy.

An additional component called Base Enterprise Manager Plug-In appears in the Downloads page of the Installer. If you install any of the Adapter Management Applications, then you must also install this component.

Note – You need to install the component only once.

The screenshot shows the 'Manage Applications' tab in Enterprise Manager. It features a 'Deploy New Management Application' dialog with an 'Application File' field, a 'Browse...' button, and a 'Deploy' button. Below the dialog is a 'Results' section showing 'None.' and a table titled 'Management Applications deployed on this Enterprise Manager Server'.

Applications	Physical Location on Server	Sessions	Status	Available Actions
/	D:\JavaCAPS6\emanager\server\webapps\ROOT	2	running	Stop Reload Undeploy
/EMServices	d:\JavaCAPS6\emanager\server\webapps\EMServices	0	running	Stop Reload Undeploy
/aaamanagementagent	aaamanagementagent	0	running	Stop Reload Undeploy
/admin	D:\JavaCAPS6\emanager\server\server\webapps\admin	0	running	Stop Reload Undeploy
/alerts	d:\JavaCAPS6\emanager\server\webapps/alerts	0	running	Stop Reload Undeploy
/balancer	balancer	0	running	Stop Reload Undeploy

FIGURE 1-6 Manage Applications Tab

The table contains the following columns,

- The **Applications** column lists the name of each application.
- The **Physical Location on Server** column lists the directory where each application is installed.
- The **Sessions** column lists how many browser sessions are currently running for each application.

- The **Status** column indicates whether each application is running or stopped.
- The **Available Actions** column enables you to start, stop, reload, and undeploy each application.

Managing the Existing Management Applications

You can start, stop, reload, and undeploy the management applications that are currently deployed.

▼ To Start a Management Application

- In the row that lists the application, click **Start**.

Under the Results heading, a message indicates that the application is started.

▼ To Stop a Management Application

- In the row that lists the application, click **Stop**.

Under the Results heading, a message indicates that the application is stopped.

▼ To Reload a Management Application

- In the row that lists the application, click **Reload**.

Under the Results heading, a message indicates that the application is reloaded.

▼ To Undeploy a Management Application

- In the row that lists the application, click **Undeploy**.

Under the Results heading, a message indicates that the application is undeployed.

Deploying New Management Applications

If a management application is available in the Repository, you can download the application by using the Suite Installer and then deploy the application by using Enterprise Manager.

The file name of the application has an extension of EMR or WAR.

▼ To Deploy a New Management Application

- 1 Download the Management Application from the Repository using the Installer. Save the file in a temporary directory.
- 2 Go to Enterprise Manager.
- 3 Navigate to Manage Applications tab.
- 4 Click Browse.
- 5 Select the EMR or WAR file and click Open.
- 6 Click Deploy.

The new management application is displayed. Enterprise Manager users can use the application immediately.

Managing Alert Codes

The Manage Alert Codes tab displays the alert codes that are currently deployed. You can install new alert codes from this tab. To install new alert codes, create a properties file and then upload the file.

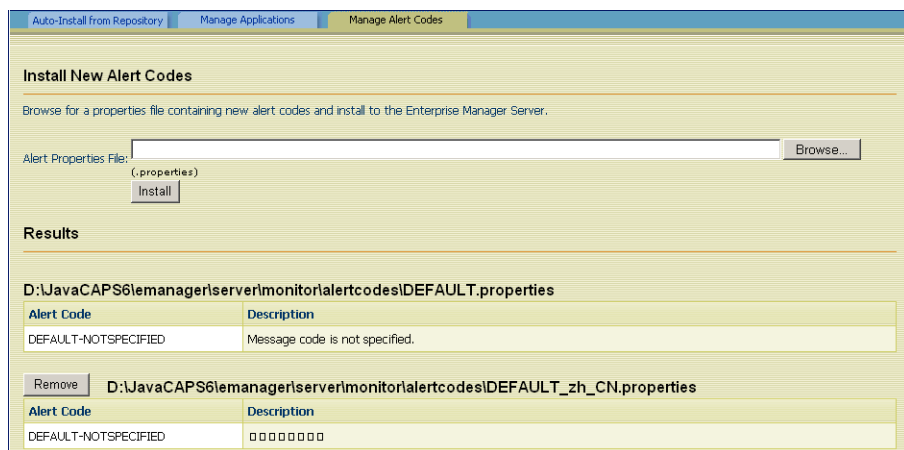


FIGURE 1-7 Manage Alert Codes Tab

Properties File Format

Java CAPS enables you to generate custom alerts in a Java-based Collaboration. Use the custom method of the alerter node. The first argument of the custom method is the new alert code. For detailed instructions, see the document at the following URL

<http://dlc.sun.com/pdf/820-0952/820-0952.pdf>.

Create a text file that includes one entry for each new alert code that you specify. The entry contains three parts

- The alert code
- An equal sign (=)
- The alert message

To enter a comment line, start the line with a pound sign (#).

When you are done, save the file with the **.properties** file extension.

Here is a sample properties file:

```
# This file contains new alert codes.
```

```
MY-00001=alert message 1
MY-00002=alert message 2
MY-00003=alert message 3
MY-00004=alert message 4
```

Uploading the Properties File

After you create the properties file, upload the file to Enterprise Manager.

▼ To Upload the Properties File

- 1 Go to Enterprise Manager.
- 2 Navigate to Manage Alert Codes tab.
- 3 Click Browse.
- 4 Select the properties file and click Open.
- 5 Click Install.

The new alert codes are displayed.

Removing Alert Codes

You can remove a set of alert codes.

▼ To Remove Alert Codes

- 1 Go to Enterprise Manager.
- 2 Navigate to Manage Alert Codes tab.
- 3 Click Remove next to the set of alert codes that you want to remove.
- 4 When prompted to confirm the removal, click OK.

