



Configuring Java CAPS Environment Components for Web Server Adapters



Sun Microsystems, Inc.
4150 Network Circle
Santa Clara, CA 95054
U.S.A.

Part No: 820-4389-10
June 2008

Copyright 2008 Sun Microsystems, Inc. 4150 Network Circle, Santa Clara, CA 95054 U.S.A. All rights reserved.

Sun Microsystems, Inc. has intellectual property rights relating to technology embodied in the product that is described in this document. In particular, and without limitation, these intellectual property rights may include one or more U.S. patents or pending patent applications in the U.S. and in other countries.

U.S. Government Rights – Commercial software. Government users are subject to the Sun Microsystems, Inc. standard license agreement and applicable provisions of the FAR and its supplements.

This distribution may include materials developed by third parties.

Parts of the product may be derived from Berkeley BSD systems, licensed from the University of California. UNIX is a registered trademark in the U.S. and other countries, exclusively licensed through X/Open Company, Ltd.

Sun, Sun Microsystems, the Sun logo, the Solaris logo, the Java Coffee Cup logo, docs.sun.com, Java, and Solaris are trademarks or registered trademarks of Sun Microsystems, Inc. in the U.S. and other countries. All SPARC trademarks are used under license and are trademarks or registered trademarks of SPARC International, Inc. in the U.S. and other countries. Products bearing SPARC trademarks are based upon an architecture developed by Sun Microsystems, Inc.

The OPEN LOOK and Sun[™] Graphical User Interface was developed by Sun Microsystems, Inc. for its users and licensees. Sun acknowledges the pioneering efforts of Xerox in researching and developing the concept of visual or graphical user interfaces for the computer industry. Sun holds a non-exclusive license from Xerox to the Xerox Graphical User Interface, which license also covers Sun's licensees who implement OPEN LOOK GUIs and otherwise comply with Sun's written license agreements.

Products covered by and information contained in this publication are controlled by U.S. Export Control laws and may be subject to the export or import laws in other countries. Nuclear, missile, chemical or biological weapons or nuclear maritime end uses or end users, whether direct or indirect, are strictly prohibited. Export or reexport to countries subject to U.S. embargo or to entities identified on U.S. export exclusion lists, including, but not limited to, the denied persons and specially designated nationals lists is strictly prohibited.

DOCUMENTATION IS PROVIDED "AS IS" AND ALL EXPRESS OR IMPLIED CONDITIONS, REPRESENTATIONS AND WARRANTIES, INCLUDING ANY IMPLIED WARRANTY OF MERCHANTABILITY, FITNESS FOR A PARTICULAR PURPOSE OR NON-INFRINGEMENT, ARE DISCLAIMED, EXCEPT TO THE EXTENT THAT SUCH DISCLAIMERS ARE HELD TO BE LEGALLY INVALID.

Contents

Configuring Java CAPS Environment Components for Web Server Adapters	5
Using the Environment Properties Editor	5
▼ To Configure the Environment Properties	5
Configuring Sun Application Server Adapter Environment Properties	6
parameter-settings (Environment)	7
Configuring WebLogic Adapter Environment Properties	7
parameter-settings (Environment)	7

Configuring Java CAPS Environment Components for Web Server Adapters

The adapter environment configuration properties contain parameters that define how the adapter connects to and interacts with other Java CAPS components within the environment. The environment properties are accessed from the NetBeans IDE Services window. The following sections provide instructions on how to configure Java CAPS component environment properties and lists the environment properties for the various web server adapters.

What You Need to Know

This topic provides information you should know to start configuring the environment properties.

- [“Using the Environment Properties Editor” on page 5](#)

What You Need to Do

These topics provide configuration information used to set the web server adapter environment properties.

- [“Configuring Sun Application Server Adapter Environment Properties” on page 6](#)
- [“Configuring WebLogic Adapter Environment Properties” on page 7](#)

Using the Environment Properties Editor

The Adapter Environment Configuration properties contain parameters that define how the adapter connects to and interacts with other Java CAPS components within the Environment. The Environment properties are accessed from the NetBeans IDE Services window.

▼ To Configure the Environment Properties

- 1 From the NetBeans Services window, expand the CAPS Environment node.

- 2 Expand the Environment created for your project and locate the External System for your specific adapter.
- 3 Right-click the External System and select Properties from the popup menu. The Environment Configuration Properties window appears.

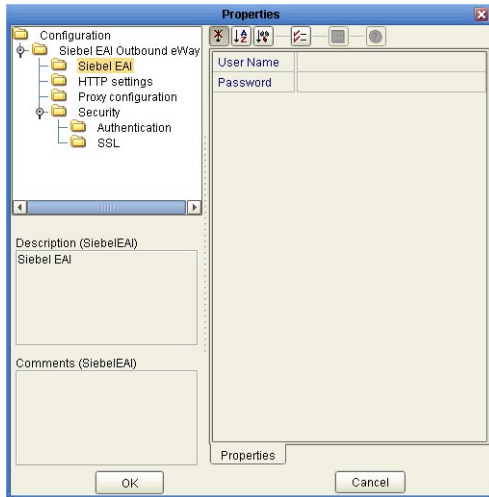


FIGURE 1 Adapter Environment Configuration Properties Editor

- 4 From the Properties Editor, click on any folder to display the default configuration properties for that section.
- 5 Click on any property field to make it editable.
- 6 Once you have finished modifying the properties, click OK to save your changes and close the editor.

Configuring Sun Application Server Adapter Environment Properties

The adapter properties, accessed from the Environment Explorer tree, are organized into the following sections:

[“parameter-settings \(Environment\)” on page 7](#)

parameter-settings (Environment)

The parameter-settings section of the Environment properties contains the top level parameters displayed in the following table.

TABLE 1 Environment - parameter-settings

Name	Description	
ServerName	Specifies the name of the other application server. If a qualified JNDI name is specified in the Connectivity Map property, EjbJndiName, that value supersedes any values specified in the Environment properties: ServerName and Port	A na The
Port	Specifies the Corba Port of the other application server.	An i The

Configuring WebLogic Adapter Environment Properties

The adapter properties, accessed from the Environment Explorer tree, are organized into the following sections:

[“parameter-settings \(Environment\)” on page 7](#)

parameter-settings (Environment)

The parameter-settings section of the Environment properties contains the top level parameters displayed in the following table.

TABLE 2 Environment - parameter-settings

Name	Description	
ServerName	Specifies the name of the other application server. If a qualified JNDI name is specified in the Connectivity Map property, EjbJndiName, that value supersedes values specified in the Environment properties: ServerName and Port	
Port	Specifies the Corba Port of the other application server.	

