

Sun Java System Connector for Microsoft Outlook 7.2 Installation Guide



Sun Microsystems, Inc.
4150 Network Circle
Santa Clara, CA 95054
U.S.A.

Part No: 819-4409-10
March 2007

Copyright 2007 Sun Microsystems, Inc. 4150 Network Circle, Santa Clara, CA 95054 U.S.A. All rights reserved.

Sun Microsystems, Inc. has intellectual property rights relating to technology embodied in the product that is described in this document. In particular, and without limitation, these intellectual property rights may include one or more U.S. patents or pending patent applications in the U.S. and in other countries.

U.S. Government Rights – Commercial software. Government users are subject to the Sun Microsystems, Inc. standard license agreement and applicable provisions of the FAR and its supplements.

This distribution may include materials developed by third parties.

Parts of the product may be derived from Berkeley BSD systems, licensed from the University of California. UNIX is a registered trademark in the U.S. and other countries, exclusively licensed through X/Open Company, Ltd.

Sun, Sun Microsystems, the Sun logo, the Solaris logo, the Java Coffee Cup logo, docs.sun.com, Java, and Solaris are trademarks or registered trademarks of Sun Microsystems, Inc. in the U.S. and other countries. All SPARC trademarks are used under license and are trademarks or registered trademarks of SPARC International, Inc. in the U.S. and other countries. Products bearing SPARC trademarks are based upon an architecture developed by Sun Microsystems, Inc.

The OPEN LOOK and Sun™ Graphical User Interface was developed by Sun Microsystems, Inc. for its users and licensees. Sun acknowledges the pioneering efforts of Xerox in researching and developing the concept of visual or graphical user interfaces for the computer industry. Sun holds a non-exclusive license from Xerox to the Xerox Graphical User Interface, which license also covers Sun's licensees who implement OPEN LOOK GUIs and otherwise comply with Sun's written license agreements.

Products covered by and information contained in this publication are controlled by U.S. Export Control laws and may be subject to the export or import laws in other countries. Nuclear, missile, chemical or biological weapons or nuclear maritime end uses or end users, whether direct or indirect, are strictly prohibited. Export or reexport to countries subject to U.S. embargo or to entities identified on U.S. export exclusion lists, including, but not limited to, the denied persons and specially designated nationals lists is strictly prohibited.

DOCUMENTATION IS PROVIDED "AS IS" AND ALL EXPRESS OR IMPLIED CONDITIONS, REPRESENTATIONS AND WARRANTIES, INCLUDING ANY IMPLIED WARRANTY OF MERCHANTABILITY, FITNESS FOR A PARTICULAR PURPOSE OR NON-INFRINGEMENT, ARE DISCLAIMED, EXCEPT TO THE EXTENT THAT SUCH DISCLAIMERS ARE HELD TO BE LEGALLY INVALID.

Copyright 2007 Sun Microsystems, Inc. 4150 Network Circle, Santa Clara, CA 95054 U.S.A. Tous droits réservés.

Sun Microsystems, Inc. détient les droits de propriété intellectuelle relatifs à la technologie incorporée dans le produit qui est décrit dans ce document. En particulier, et ce sans limitation, ces droits de propriété intellectuelle peuvent inclure un ou plusieurs brevets américains ou des applications de brevet en attente aux États-Unis et dans d'autres pays.

Cette distribution peut comprendre des composants développés par des tierces personnes.

Certains composants de ce produit peuvent être dérivés du logiciel Berkeley BSD, licenciés par l'Université de Californie. UNIX est une marque déposée aux États-Unis et dans d'autres pays; elle est licenciée exclusivement par X/Open Company, Ltd.

Sun, Sun Microsystems, le logo Sun, le logo Solaris, le logo Java Coffee Cup, docs.sun.com, Java et Solaris sont des marques de fabrique ou des marques déposées de Sun Microsystems, Inc. aux États-Unis et dans d'autres pays. Toutes les marques SPARC sont utilisées sous licence et sont des marques de fabrique ou des marques déposées de SPARC International, Inc. aux États-Unis et dans d'autres pays. Les produits portant les marques SPARC sont basés sur une architecture développée par Sun Microsystems, Inc.

L'interface d'utilisation graphique OPEN LOOK et Sun a été développée par Sun Microsystems, Inc. pour ses utilisateurs et licenciés. Sun reconnaît les efforts de pionniers de Xerox pour la recherche et le développement du concept des interfaces d'utilisation visuelle ou graphique pour l'industrie de l'informatique. Sun détient une licence non exclusive de Xerox sur l'interface d'utilisation graphique Xerox, cette licence couvrant également les licenciés de Sun qui mettent en place l'interface d'utilisation graphique OPEN LOOK et qui, en outre, se conforment aux licences écrites de Sun.

Les produits qui font l'objet de cette publication et les informations qu'il contient sont régis par la législation américaine en matière de contrôle des exportations et peuvent être soumis au droit d'autres pays dans le domaine des exportations et importations. Les utilisations finales, ou utilisateurs finaux, pour des armes nucléaires, des missiles, des armes chimiques ou biologiques ou pour le nucléaire maritime, directement ou indirectement, sont strictement interdites. Les exportations ou réexportations vers des pays sous embargo des États-Unis, ou vers des entités figurant sur les listes d'exclusion d'exportation américaines, y compris, mais de manière non exclusive, la liste de personnes qui font objet d'un ordre de ne pas participer, d'une façon directe ou indirecte, aux exportations des produits ou des services qui sont régis par la législation américaine en matière de contrôle des exportations et la liste de ressortissants spécifiquement désignés, sont rigoureusement interdites.

LA DOCUMENTATION EST FOURNIE "EN L'ETAT" ET TOUTES AUTRES CONDITIONS, DECLARATIONS ET GARANTIES EXPRESSES OU TACITES SONT FORMELLEMENT EXCLUES, DANS LA MESURE AUTORISEE PAR LA LOI APPLICABLE, Y COMPRIS NOTAMMENT TOUTE GARANTIE IMPLICITE RELATIVE A LA QUALITE MARCHANDE, A L'APTITUDE A UNE UTILISATION PARTICULIERE OU A L'ABSENCE DE CONTREFACON.

Contents

Preface	7
1 Installing the Desktop Deployment Toolkit	13
Installation Overview	14
Installing the Administrator's Software	14
▼ To Install the Desktop Deployment Toolkit	14
What's Next?	18
Index	21

Figures

FIGURE 1-1	The InstallShield Wizard Welcome Screen	15
FIGURE 1-2	InstallShield Wizard: License Agreement	15
FIGURE 1-3	InstallShield Wizard: Customer Information	16
FIGURE 1-4	InstallShield Wizard: Destination Folder	17
FIGURE 1-5	InstallShield Wizard: Change Current Destination Folder	17

Preface

This guide describes installing the administrator's software for the Sun Java™ System Connector for Microsoft Outlook. It also describes upgrading from a previous version and provides some installation troubleshooting.

Who Should Use This Book

You should read this book if you are responsible for installing Sun Java System Connector for Microsoft Outlook at your site.

Before You Read This Book

This book assumes that you are responsible for installing the Connector for Microsoft Outlook software and that you have a general understanding of the following:

- The Internet and the World Wide Web
- Messaging Server and Calendar Server protocols
- System Administration and Networking on the following platforms:
 - Microsoft Windows 2000
 - Microsoft Windows XP
- Microsoft Outlook
- General Deployment Architectures

How This Book Is Organized

This book contains the following chapter:

[Chapter 1](#) describes the installation process of the Connector for Microsoft Outlook

Connector for Microsoft Outlook Documentation Set

The following table summarizes the books included in the Connector for Microsoft Outlook core documentation set.

TABLE P-1 Books in This Documentation Set

Book Title	Description
Part VI, “Deploying Connector for Microsoft Outlook,” in <i>Sun Java Communications Suite 5 Deployment Planning Guide</i>	Describes the administrator’s process and strategies for deploying Connector for Microsoft Outlook to user desktops.
<i>Sun Java System Connector for Microsoft Outlook 7.2 Installation Guide</i>	(This guide) Describes how to install the administration software that helps an administrator deploy Connector for Microsoft Outlook to user desktops.
<i>Sun Java System Connector for Microsoft Outlook 7.2 Administration Guide</i>	Describes the administrator’s deployment configuration program for the Connector for Microsoft Outlook.
<i>Sun Java System Connector for Microsoft Outlook 7.2 User’s Guide</i>	Explains how to install, use and configure the Connector for Microsoft Outlook on your desktop. This guide also describes the user interface.
<i>Sun Java Communications Suite 5 Release Notes</i>	Contains last-minute information, including a description of what is new in this current release, known problems and limitations, installation notes, and how to report issues with the software or the documentation.

The Connector for Microsoft Outlook documentation collection can be found at <http://docs.sun.com/coll/1630.1>.

Related Books

For other server documentation, go to the following:

- [Sun Java System Messaging Server documentation \(http://docs.sun.com/coll/1312.2\)](http://docs.sun.com/coll/1312.2)
- [Sun Java System Calendar Server documentation \(http://docs.sun.com/coll/1313.2\)](http://docs.sun.com/coll/1313.2)

Typographic Conventions

The following table describes the typographic changes that are used in this book.

TABLE P-2 Typographic Conventions

Typeface	Meaning	Example
AaBbCc123	The names of commands, files, and directories, and onscreen computer output	Edit your <code>.login</code> file. Use <code>ls -a</code> to list all files. <code>machine_name% you have mail.</code>
AaBbCc123	What you type, contrasted with onscreen computer output	<code>machine_name% su</code> Password:
<i>AaBbCc123</i>	A placeholder to be replaced with a real name or value	The command to remove a file is <code>rm filename</code> .
<i>AaBbCc123</i>	Book titles, new terms, and terms to be emphasized (note that some emphasized items appear bold online)	Read Chapter 6 in the <i>User's Guide</i> . <i>A cache</i> is a copy that is stored locally. Do <i>not</i> save the file.

Shell Prompts in Command Examples

The following table shows default system prompts and superuser prompts.

TABLE P-3 Shell Prompts

Shell	Prompt
C shell on UNIX and Linux systems	<code>machine_name%</code>
C shell superuser on UNIX and Linux systems	<code>machine_name#</code>
Bourne shell and Korn shell on UNIX and Linux systems	<code>\$</code>
Bourne shell and Korn shell superuser on UNIX and Linux systems	<code>#</code>
Microsoft Windows command line	<code>C:\</code>

Symbol Conventions

The following table explains symbols that might be used in this book.

TABLE P-4 Symbol Conventions

Symbol	Description	Example	Meaning
[]	Contains optional arguments and command options.	ls [-l]	The -l option is not required.
{ }	Contains a set of choices for a required command option.	-d {y n}	The -d option requires that you use either the y argument or the n argument.
\${ }	Indicates a variable reference.	\${com.sun.javaRoot}	References the value of the com.sun.javaRoot variable.
-	Joins simultaneous multiple keystrokes.	Control-A	Press the Control key while you press the A key.
+	Joins consecutive multiple keystrokes.	Ctrl+A+N	Press the Control key, release it, and then press the subsequent keys.
→	Indicates menu item selection in a graphical user interface.	File → New → Templates	From the File menu, choose New. From the New submenu, choose Templates.

Documentation, Support, and Training

The Sun web site provides information about the following additional resources:

- Documentation (<http://www.sun.com/documentation/>)
- Support (<http://www.sun.com/support/>)
- Training (<http://www.sun.com/training/>)

Third-Party Web Site References

Third-party URLs are referenced in this document and provide additional, related information.

Note – Sun is not responsible for the availability of third-party web sites mentioned in this document. Sun does not endorse and is not responsible or liable for any content, advertising, products, or other materials that are available on or through such sites or resources. Sun will not be responsible or liable for any actual or alleged damage or loss caused or alleged to be caused by or in connection with use of or reliance on any such content, goods, or services that are available on or through such sites or resources.

Sun Welcomes Your Comments

Sun is interested in improving its documentation and welcomes your comments and suggestions. To share your comments, go to <http://docs.sun.com> and click Send Comments. In the online form, provide the full document title and part number. The part number is a 7-digit or 9-digit number that can be found on the book's title page or in the document's URL. For example, the part number of this book is 819-4409.

Installing the Desktop Deployment Toolkit

This book describes installing and upgrading the administrator's Desktop Deployment Toolkit for the Sun Java System Connector for Microsoft Outlook. The InstallShield Wizard installs all of the components of Sun's Deployment Toolkit:

- **Deployment Configuration Program:** Sun's tool that lets system administrators create bundled, customized installation packages for end users.
- **Sun Java System Connector Setup Wizard:** Sun's tool that lets end users install the Sun Java System Connector software, configure its operations and features, and convert existing Outlook data files (.pst files) associated with Exchange into a form that the Sun Java System Connector can use.
- **Sun's Install kit (MSI) for the Sun Java System Connector:** Sun's installation utility for the per-desktop software that facilitates ongoing, permanent communications between Microsoft Outlook and the Sun Java System server.
- **Special Kits for using Microsoft System Management Services (SMS) to install the Sun Java System Connector:** Sun utilities that support the "push" functionality of Microsoft's SMS to let a system administrator distribute and install the Sun Java System Connector desktop components to user desktops with minimal or no user involvement.

These components are described in more detail in Part VI, "Deploying Connector for Microsoft Outlook," in *Sun Java Communications Suite 5 Deployment Planning Guide* and the *Sun Java System Connector for Microsoft Outlook 7.2 Administration Guide*. This *Installation Guide* describes only the installation of this Deployment Toolkit, and is organized into the following sections:

- "Installation Overview" on page 14
- "Installing the Administrator's Software" on page 14
- "What's Next?" on page 18

Installation Overview

If the most recent version of the administrator's Deployment Toolkit for the Sun Java System Connector for Microsoft Outlook is not already installed on your computer, you must install it before you can create end-user installation packages.

Before you install, you should verify that the systems on which you plan to install the software meet the minimum product requirements. It is also a good idea to plan how you want to deploy and configure the software components before you begin the installation process. See "Desktop Deployment Process Tasks" in *Sun Java Communications Suite 5 Deployment Planning Guide* for information about deploying Connector for Microsoft Outlook to user desktops. And see the *Sun Java Communications Suite 5 Release Notes* for hardware and software requirements and supported versions.

Note – If you are upgrading from an earlier version of the Desktop Deployment Toolkit: This InstallShield Wizard will simply overwrite the earlier version with this new version, and leave only a single program entry in the Add/Remove Programs applet in Windows' Control Panel. There is no separate procedure or special accommodation for a version upgrade versus a first-time installation.

Installing the Administrator's Software

Follow the steps below to install the administrator's Desktop Deployment Toolkit.

▼ To Install the Desktop Deployment Toolkit

- 1 **Locate the Sun Java System Connector for Microsoft Outlook setup file, Setup.exe, that you have downloaded or otherwise copied to your computer.**

Double-click the filename to start the program. You are prompted to select your preferred language.

The InstallShield Wizard then welcomes you to the process and prompts you to click **Next** to continue, as shown in [Figure 1-1](#).

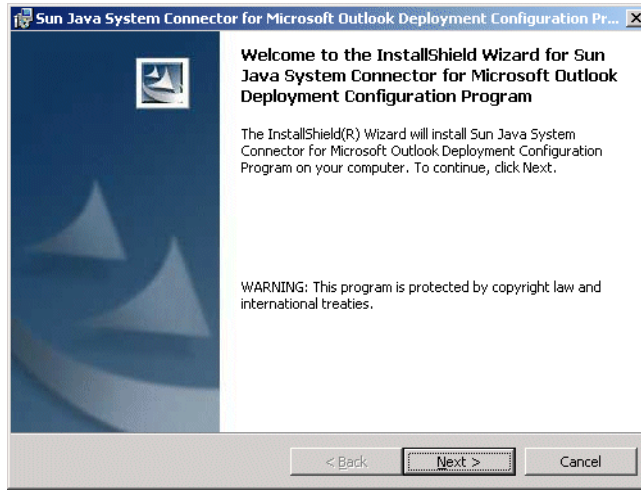


FIGURE 1-1 The InstallShield Wizard Welcome Screen

2 Accept the license agreement.

Read the license agreement for Connector for Microsoft Outlook, as shown in [Figure 1-2](#) and select the option to accept the license agreement terms.

Click **Next** to continue.

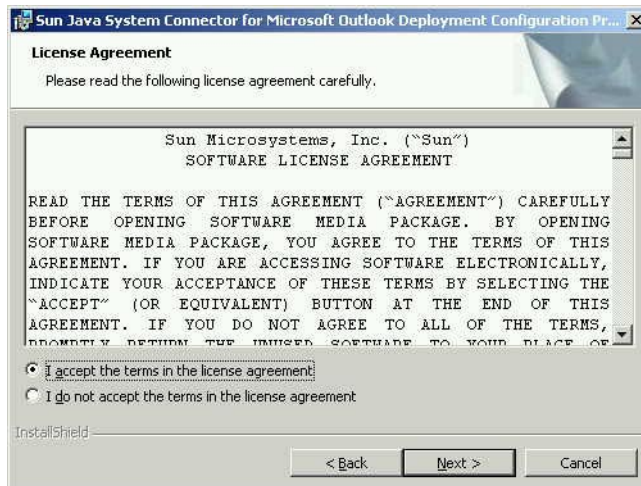


FIGURE 1-2 InstallShield Wizard: License Agreement

3 Enter your customer information.

Enter your user name and organization, as shown in [Figure 1-3](#), and choose whether you want the Deployment Configuration Program software to be available to all users of this computer, or only to your user name.

Click **Next** to continue.

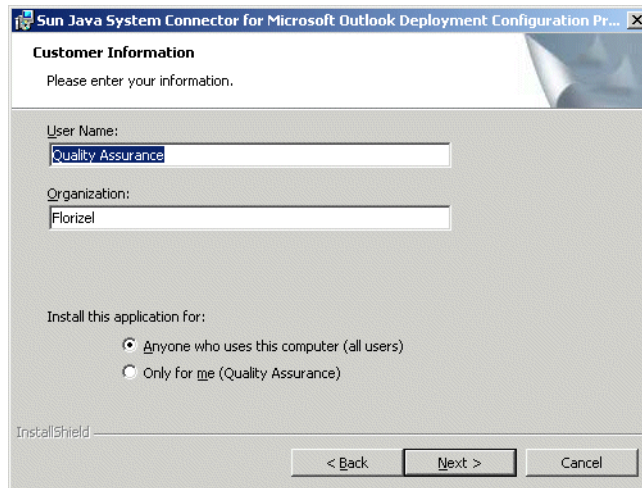


FIGURE 1-3 InstallShield Wizard: Customer Information

4 Select or confirm the destination folder where the Deployment Configuration Program is installed.

The Destination Folder window, as shown in [Figure 1-4](#), prompts you to confirm or change the location where the Deployment Configuration Program is installed.

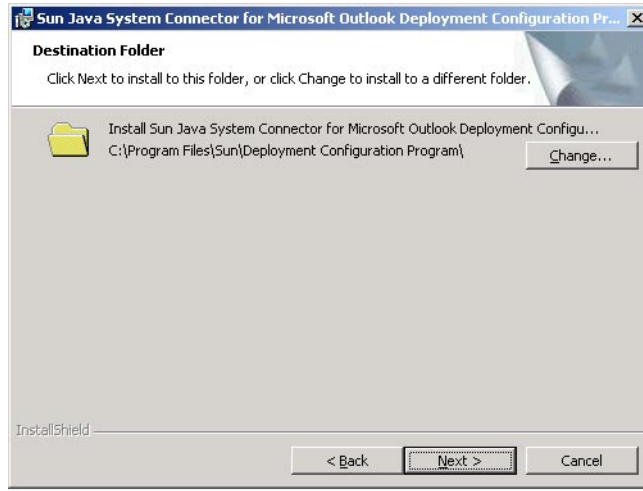


FIGURE 1-4 InstallShield Wizard: Destination Folder

To change the location, click Change. In the Change Current Destination Folder window, set the desired folder, as shown in Figure 1-5.

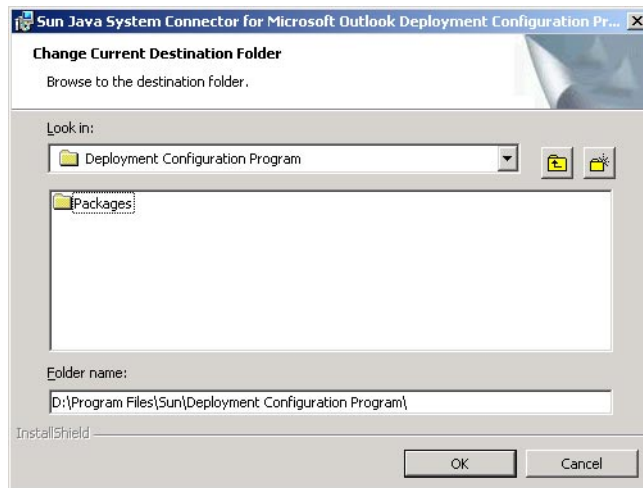


FIGURE 1-5 InstallShield Wizard: Change Current Destination Folder

Once the destination folder is set, click **Next** in the Destination Folder window.

5 Install the software.

The InstallShield Wizard then announces that it is ready to begin the actual installation, and prompts you to click **Next** to begin.

6 Wait for the installation to proceed and conclude.

A progress meter appears in the window while you are waiting. The InstallShield Wizard notifies you when the process is complete, and prompts you to click **Finish**.

7 Click Finish.

As the InstallShield Wizard exits, it opens a browser window with links to the Sun web site where you can download the documentation's PDF and HTML files.

The Desktop Deployment Toolkit has now been installed to the location you specified in the Destination Folder window. The default folder is:

```
C:\Program Files\Sun\Deployment Configuration Program\
```

A new shortcut icon for the administrator's Deployment Configuration program (Admin.exe) appears on your desktop.

What's Next?

Planning and foresight are critical to a smooth deployment, so you should have already prepared a comprehensive Deployment Plan before installing the administrator software as described in this chapter. If you haven't yet prepared a Deployment Plan, do it now, before you attempt to create your first desktop deployment kit. The process of developing a comprehensive Deployment Plan is a valuable exercise that will lead you to consider and accommodate all of the factors likely to influence your organization's migration. Part VI, "Deploying Connector for Microsoft Outlook," in *Sun Java Communications Suite 5 Deployment Planning Guide* explains important migration concepts, prerequisites, and strategic choices, and explains how to develop a Deployment Plan that will guide you through your migration. Every administrator should therefore read Part VI, "Deploying Connector for Microsoft Outlook," in *Sun Java Communications Suite 5 Deployment Planning Guide* and prepare a comprehensive Deployment Plan.

After you have prepared your Deployment Plan and installed the administrator software, you can:

1. **Configure an end-user package.** The *Sun Java System Connector for Microsoft Outlook 7.2 Administration Guide* explains how to use the Deployment Configuration Program to create customized packages for Outlook end users. These packages can be configured to install the necessary software on user desktops, or to convert users' existing Outlook and Exchange data files for use with the new software, or both, depending on your circumstances.

2. **Deploy each end-user package.** Once you have created an installation package for your users, you must tell them where to find it and how to use it. Many administrators simply copy the package and the *Sun Java System Connector for Microsoft Outlook 7.2 User's Guide* to a shared folder, and then provide links to the installation package and documentation in an announcement email to users.

If your migration strategy calls for two or more different installation packages for different users or user groups, simply repeat these two steps for each package until all users have been migrated.

Index

A

administrator's software, 14

D

Deployment Configuration Program, 13

documentation, 18

I

installation to user desktop, 13

P

push method of software deployment, 13

S

Setup Wizard, 13

U

upgrading from an earlier version, 14

user installation package, 13

