



Sun Cluster Data Service for Oracle Guide for Solaris OS



Sun Microsystems, Inc.
4150 Network Circle
Santa Clara, CA 95054
U.S.A.

Part No: 821-0274-10
November 2009, Revision A

Copyright 2009 Sun Microsystems, Inc. 4150 Network Circle, Santa Clara, CA 95054 U.S.A. All rights reserved.

Sun Microsystems, Inc. has intellectual property rights relating to technology embodied in the product that is described in this document. In particular, and without limitation, these intellectual property rights may include one or more U.S. patents or pending patent applications in the U.S. and in other countries.

U.S. Government Rights – Commercial software. Government users are subject to the Sun Microsystems, Inc. standard license agreement and applicable provisions of the FAR and its supplements.

This distribution may include materials developed by third parties.

Parts of the product may be derived from Berkeley BSD systems, licensed from the University of California. UNIX is a registered trademark in the U.S. and other countries, exclusively licensed through X/Open Company, Ltd.

Sun, Sun Microsystems, the Sun logo, the Solaris logo, the Java Coffee Cup logo, docs.sun.com, Java, and Solaris are trademarks or registered trademarks of Sun Microsystems, Inc. or its subsidiaries in the U.S. and other countries. All SPARC trademarks are used under license and are trademarks or registered trademarks of SPARC International, Inc. in the U.S. and other countries. Products bearing SPARC trademarks are based upon an architecture developed by Sun Microsystems, Inc.

The OPEN LOOK and Sun Graphical User Interface was developed by Sun Microsystems, Inc. for its users and licensees. Sun acknowledges the pioneering efforts of Xerox in researching and developing the concept of visual or graphical user interfaces for the computer industry. Sun holds a non-exclusive license from Xerox to the Xerox Graphical User Interface, which license also covers Sun's licensees who implement OPEN LOOK GUIs and otherwise comply with Sun's written license agreements.

Products covered by and information contained in this publication are controlled by U.S. Export Control laws and may be subject to the export or import laws in other countries. Nuclear, missile, chemical or biological weapons or nuclear maritime end uses or end users, whether direct or indirect, are strictly prohibited. Export or reexport to countries subject to U.S. embargo or to entities identified on U.S. export exclusion lists, including, but not limited to, the denied persons and specially designated nationals lists is strictly prohibited.

DOCUMENTATION IS PROVIDED "AS IS" AND ALL EXPRESS OR IMPLIED CONDITIONS, REPRESENTATIONS AND WARRANTIES, INCLUDING ANY IMPLIED WARRANTY OF MERCHANTABILITY, FITNESS FOR A PARTICULAR PURPOSE OR NON-INFRINGEMENT, ARE DISCLAIMED, EXCEPT TO THE EXTENT THAT SUCH DISCLAIMERS ARE HELD TO BE LEGALLY INVALID.

Copyright 2009 Sun Microsystems, Inc. 4150 Network Circle, Santa Clara, CA 95054 U.S.A. Tous droits réservés.

Sun Microsystems, Inc. détient les droits de propriété intellectuelle relatifs à la technologie incorporée dans le produit qui est décrit dans ce document. En particulier, et ce sans limitation, ces droits de propriété intellectuelle peuvent inclure un ou plusieurs brevets américains ou des applications de brevet en attente aux Etats-Unis et dans d'autres pays.

Cette distribution peut comprendre des composants développés par des tierces personnes.

Certains composants de ce produit peuvent être dérivés du logiciel Berkeley BSD, licenciés par l'Université de Californie. UNIX est une marque déposée aux Etats-Unis et dans d'autres pays; elle est licenciée exclusivement par X/Open Company, Ltd.

Sun, Sun Microsystems, le logo Sun, le logo Solaris, le logo Java Coffee Cup, docs.sun.com, Java et Solaris sont des marques de fabrique ou des marques déposées de Sun Microsystems, Inc., ou ses filiales, aux Etats-Unis et dans d'autres pays. Toutes les marques SPARC sont utilisées sous licence et sont des marques de fabrique ou des marques déposées de SPARC International, Inc. aux Etats-Unis et dans d'autres pays. Les produits portant les marques SPARC sont basés sur une architecture développée par Sun Microsystems, Inc.

L'interface d'utilisation graphique OPEN LOOK et Sun a été développée par Sun Microsystems, Inc. pour ses utilisateurs et licenciés. Sun reconnaît les efforts de pionniers de Xerox pour la recherche et le développement du concept des interfaces d'utilisation visuelle ou graphique pour l'industrie de l'informatique. Sun détient une licence non exclusive de Xerox sur l'interface d'utilisation graphique Xerox, cette licence couvrant également les licenciés de Sun qui mettent en place l'interface d'utilisation graphique OPEN LOOK et qui, en outre, se conforment aux licences écrites de Sun.

Les produits qui font l'objet de cette publication et les informations qu'il contient sont régis par la législation américaine en matière de contrôle des exportations et peuvent être soumis au droit d'autres pays dans le domaine des exportations et importations. Les utilisations finales, ou utilisateurs finaux, pour des armes nucléaires, des missiles, des armes chimiques ou biologiques ou pour le nucléaire maritime, directement ou indirectement, sont strictement interdites. Les exportations ou réexportations vers des pays sous embargo des Etats-Unis, ou vers des entités figurant sur les listes d'exclusion d'exportation américaines, y compris, mais de manière non exclusive, la liste de personnes qui font objet d'un ordre de ne pas participer, d'une façon directe ou indirecte, aux exportations des produits ou des services qui sont régis par la législation américaine en matière de contrôle des exportations et la liste de ressortissants spécifiquement désignés, sont rigoureusement interdites.

LA DOCUMENTATION EST FOURNIE "EN L'ETAT" ET TOUTES AUTRES CONDITIONS, DECLARATIONS ET GARANTIES EXPRESSES OU TACITES SONT FORMELLEMENT EXCLUES, DANS LA MESURE AUTORISEE PAR LA LOI APPLICABLE, Y COMPRIS NOTAMMENT TOUTE GARANTIE IMPLICITE RELATIVE A LA QUALITE MARCHANDE, A L'APTITUDE A UNE UTILISATION PARTICULIERE OU A L'ABSENCE DE CONTREFACON.

Contents

Preface	9
Installing and Configuring Sun Cluster HA for Oracle	13
Overview of the Installation and Configuration Process for Sun Cluster HA for Oracle	14
Planning the Sun Cluster HA for Oracle Installation and Configuration	16
Configuration Requirements	16
Configuration Planning Questions	18
Preparing the Nodes and Disks	19
▼ How to Prepare the Nodes	19
▼ How to Configure the Oracle Database Access Using Solaris Volume Manager	21
▼ How to Configure the Oracle Database Access Using Veritas Volume Manager	21
▼ How to Configure the Oracle Database Access Using ASM	22
How to Install the ASM Software	23
How to Verify the ASM Software Installation	23
Installing the Oracle Software	24
▼ How to Install the Oracle Software	24
▼ How to Set the Oracle Kernel Parameters	25
Verifying the Oracle Installation and Configuration	26
▼ How to Verify the Oracle Installation	26
Creating an Oracle Database	27
▼ How to Create a Primary Oracle Database	27
Setting Up Oracle Database Permissions	28
▼ How to Set Up Oracle Database Permissions	28
Installing the Sun Cluster HA for Oracle Packages	32
▼ How to Install the Sun Cluster HA for Oracle Packages	32
Registering and Configuring Sun Cluster HA for Oracle	34
Tools for Registering and Configuring Sun Cluster HA for Oracle	34
Setting Sun Cluster HA for Oracle Extension Properties	34

▼ How to Register and Configure Sun Cluster HA for Oracle by Using the <code>clsetup</code> Utility	35
▼ How to Register and Configure Sun Cluster HA for Oracle by Using Sun Cluster Maintenance commands Without Using ASM	40
▼ How to Register and Configure Sun Cluster HA for Oracle with Single Instance ASM Using Sun Cluster Maintenance Commands	47
▼ How to Register and Configure Sun Cluster HA for Oracle with Clustered ASM Instance Using Sun Cluster Maintenance Commands	50
Where to Go From Here	57
Verifying the Sun Cluster HA for Oracle Installation	57
▼ How to Verify the Sun Cluster HA for Oracle Installation	58
Oracle Clients	59
Location of Sun Cluster HA for Oracle Log Files	59
Tuning the Sun Cluster HA for Oracle Fault Monitors	59
Operation of the Oracle Server Fault Monitor	60
Operation of the Oracle Listener Fault Monitor	63
Obtaining Core Files for Troubleshooting DBMS Timeouts	63
Customizing the Sun Cluster HA for Oracle Server Fault Monitor	64
Defining Custom Behavior for Errors	64
Propagating a Custom Action File to All Nodes in a Cluster	73
Specifying the Custom Action File That a Server Fault Monitor Should Use	73
Upgrading Sun Cluster HA for Oracle Resource Types	74
Upgrading the <code>SUNW.oracle_listener</code> Resource Type	74
Upgrading the <code>SUNW.oracle_server</code> Resource Type	76
Changing the Role of a DataGuard Instance	78
▼ How to Change the Role of a DataGuard Instance	78
A Sun Cluster HA for Oracle Extension Properties	81
<code>SUNW.oracle_server</code> Extension Properties	81
<code>SUNW.oracle_listener</code> Extension Properties	85
B Preset Actions for DBMS Errors and Logged Alerts	87
C Sample Configurations for ASM with Sun Cluster HA for Oracle	95
Choosing the Appropriate ASM Instance	95
Single Instance ASM with Separate Disk Groups	96

Clustered ASM with Clustered Diskgroups 99

Single Instance ASM with Separate Disk Groups in a Non-Global Zone 103

Index 107

Tables

TABLE 1	Task Map: Installing and Configuring HA for Oracle	14
TABLE 2	Task Map: Installing and Configuring HA for Oracle with Single Instance ASM	15
TABLE 3	Task Map: Installing and Configuring HA for Oracle with Clustered ASM	15
TABLE 4	Resource Types for Sun Cluster HA for Oracle Fault Monitors	60
TABLE 1	Preset Actions for DBMS Errors	87
TABLE 2	Preset Actions for Logged Alerts	94

Preface

Sun Cluster Data Service for Oracle Guide for Solaris OS explains how to install and configure Sun™ Cluster HA for Oracle.

Note – This Sun Cluster release supports systems that use the SPARC and x86 families of processor architectures: UltraSPARC, SPARC64, AMD64, and Intel 64. In this document, x86 refers to the larger family of 64-bit x86 compatible products. Information in this document pertains to all platforms unless otherwise specified.

This document is intended for system administrators with extensive knowledge of Sun software and hardware. Do not use this document as a planning or presales guide. Before reading this document, you should have already determined your system requirements and purchased the appropriate equipment and software.

The instructions in this book assume knowledge of the Solaris™ Operating System (Solaris OS) and expertise with the volume-manager software that is used with Sun Cluster software.

Using UNIX Commands

This document contains information about commands that are specific to installing and configuring Sun Cluster data services. The document does *not* contain comprehensive information about basic UNIX® commands and procedures, such as shutting down the system, booting the system, and configuring devices. Information about basic UNIX commands and procedures is available from the following sources:

- Online documentation for the Solaris Operating System
- Solaris Operating System man pages
- Other software documentation that you received with your system

Typographic Conventions

The following table describes the typographic conventions that are used in this book.

TABLE P-1 Typographic Conventions

Typeface	Meaning	Example
AaBbCc123	The names of commands, files, and directories, and onscreen computer output	Edit your <code>.login</code> file. Use <code>ls -a</code> to list all files. <code>machine_name%</code> you have mail.
AaBbCc123	What you type, contrasted with onscreen computer output	<code>machine_name%</code> su Password:
<i>aabbcc123</i>	Placeholder: replace with a real name or value	The command to remove a file is <i>rm filename</i> .
<i>AaBbCc123</i>	Book titles, new terms, and terms to be emphasized	Read Chapter 6 in the <i>User's Guide</i> . <i>A cache</i> is a copy that is stored locally. Do <i>not</i> save the file. Note: Some emphasized items appear bold online.

Shell Prompts in Command Examples

The following table shows the default UNIX system prompt and superuser prompt for the C shell, Bourne shell, and Korn shell.

TABLE P-2 Shell Prompts

Shell	Prompt
C shell	<code>machine_name%</code>
C shell for superuser	<code>machine_name#</code>
Bourne shell and Korn shell	<code>\$</code>
Bourne shell and Korn shell for superuser	<code>#</code>

Related Documentation

Information about related Sun Cluster topics is available in the documentation that is listed in the following table. All Sun Cluster documentation is available at <http://docs.sun.com>.

Topic	Documentation
Data service administration	<i>Sun Cluster Data Services Planning and Administration Guide for Solaris OS</i> Individual data service guides
Concepts	<i>Sun Cluster Concepts Guide for Solaris OS</i>
Overview	<i>Sun Cluster Overview for Solaris OS</i>
Software installation	<i>Sun Cluster Software Installation Guide for Solaris OS</i>
System administration	<i>Sun Cluster System Administration Guide for Solaris OS</i>
Hardware administration	<i>Sun Cluster 3.1 - 3.2 Hardware Administration Manual for Solaris OS</i> Individual hardware administration guides
Data service development	<i>Sun Cluster Data Services Developer's Guide for Solaris OS</i>
Error messages	<i>Sun Cluster Error Messages Guide for Solaris OS</i>
Command and function reference	<i>Sun Cluster Reference Manual for Solaris OS</i>

For a complete list of Sun Cluster documentation, see the release notes for your release of Sun Cluster at <http://docs.sun.com>.

Related Third-Party Web Site References

Third-party URLs that are referenced in this document provide additional related information.

Note – Sun is not responsible for the availability of third-party web sites mentioned in this document. Sun does not endorse and is not responsible or liable for any content, advertising, products, or other materials that are available on or through such sites or resources. Sun will not be responsible or liable for any actual or alleged damage or loss caused or alleged to be caused by or in connection with use of or reliance on any such content, goods, or services that are available on or through such sites or resources.

Documentation, Support, and Training

The Sun web site provides information about the following additional resources:

- [Documentation](http://www.sun.com/documentation/) (<http://www.sun.com/documentation/>)
- [Support](http://www.sun.com/support/) (<http://www.sun.com/support/>)
- [Training](http://www.sun.com/training/) (<http://www.sun.com/training/>)

Sun Welcomes Your Comments

Sun is interested in improving its documentation and welcomes your comments and suggestions. To share your comments, go to <http://docs.sun.com> and click Feedback.

Getting Help

If you have problems installing or using Sun Cluster, contact your service provider and provide the following information:

- Your name and email address (if available)
- Your company name, address, and phone number
- The model number and serial number of your systems
- The release number of the Solaris Operating System (for example, Solaris 10)
- The release number of Sun Cluster (for example, Sun Cluster 3.2)

Use the following commands to gather information about each node on your system for your service provider.

Command	Function
<code>prtconf -v</code>	Displays the size of the system memory and reports information about peripheral devices
<code>psrinfo -v</code>	Displays information about processors
<code>showrev -p</code>	Reports which patches are installed
<code>prtdiag -v</code>	Displays system diagnostic information
<code>/usr/cluster/bin/clnode show-rev</code>	Displays Sun Cluster release and package version information

Also have available the contents of the `/var/adm/messages` file.

Installing and Configuring Sun Cluster HA for Oracle

This chapter explains how to install and configure Sun Cluster HA for Oracle.

This chapter contains the following sections.

- “Overview of the Installation and Configuration Process for Sun Cluster HA for Oracle” on page 14
- “Planning the Sun Cluster HA for Oracle Installation and Configuration” on page 16
- “Preparing the Nodes and Disks” on page 19
- “Installing the Oracle Software” on page 24
- “Verifying the Oracle Installation and Configuration” on page 26
- “Creating an Oracle Database” on page 27
- “Setting Up Oracle Database Permissions” on page 28
- “Installing the Sun Cluster HA for Oracle Packages” on page 32
- “Registering and Configuring Sun Cluster HA for Oracle” on page 34
- “Verifying the Sun Cluster HA for Oracle Installation” on page 57
- “Tuning the Sun Cluster HA for Oracle Fault Monitors” on page 59
- “Customizing the Sun Cluster HA for Oracle Server Fault Monitor” on page 64
- “Upgrading Sun Cluster HA for Oracle Resource Types” on page 74
- “Changing the Role of a DataGuard Instance” on page 78

Note – You can use Sun Cluster Manager to configure this data service. See the Sun Cluster Manager online help for details.

Overview of the Installation and Configuration Process for Sun Cluster HA for Oracle

The following tables summarize the tasks for installing and configuring Sun Cluster HA for Oracle. The first table summarizes the tasks for installing and configuring Sun Cluster HA for Oracle without ASM. The subsequent tables summarize the tasks for installing and configuring Sun Cluster HA for Oracle with ASM. The tables also provide cross-references to detailed instructions for performing the tasks. Perform these tasks in the order that they are listed. If you are using Sun Cluster HA for Oracle with Oracle DataGuard, perform these tasks on each cluster where your Oracle database instances are running.

TABLE 1 Task Map: Installing and Configuring HA for Oracle

Task	Cross-Reference
Plan the Sun Cluster HA for Oracle installation and configuration	"Planning the Sun Cluster HA for Oracle Installation and Configuration" on page 16
Prepare the nodes and disks	"Preparing the Nodes and Disks" on page 19
Install the Oracle software	"How to Install the Oracle Software" on page 24
Verify the Oracle installation	"How to Verify the Oracle Installation" on page 26
Create an Oracle database	"How to Create a Primary Oracle Database" on page 27
Set up Oracle database permissions	"How to Set Up Oracle Database Permissions" on page 28
Install the Sun Cluster HA for Oracle packages	"Installing the Sun Cluster HA for Oracle Packages" on page 32
Register and configure Sun Cluster HA for Oracle	"How to Register and Configure Sun Cluster HA for Oracle by Using Sun Cluster Maintenance commands Without Using ASM" on page 40
Verify the Sun Cluster HA for Oracle installation	"Verifying the Sun Cluster HA for Oracle Installation" on page 57
Tune the Sun Cluster HA for Oracle fault monitor	"Tuning the Sun Cluster HA for Oracle Fault Monitors" on page 59
(Optional) Customize the Sun Cluster HA for Oracle server fault monitor	"Customizing the Sun Cluster HA for Oracle Server Fault Monitor" on page 64
(Optional) Upgrade Sun Cluster HA for Oracle resource types	"Upgrading Sun Cluster HA for Oracle Resource Types" on page 74
(Optional) Change the role of a DataGuard instance	"Changing the Role of a DataGuard Instance" on page 78

TABLE 2 Task Map: Installing and Configuring HA for Oracle with Single Instance ASM

Task	Cross-Reference
Plan the Sun Cluster HA for Oracle installation and configuration	“Planning the Sun Cluster HA for Oracle Installation and Configuration” on page 16
Prepare the nodes and disks	“Preparing the Nodes and Disks” on page 19
Install the ASM software	“How to Install the ASM Software” on page 23
Install the Oracle software	“How to Install the Oracle Software” on page 24
Verify the Oracle installation	“How to Verify the Oracle Installation” on page 26
Create an Oracle database	“How to Create a Primary Oracle Database” on page 27
Set up Oracle database permissions	“How to Set Up Oracle Database Permissions” on page 28
Install the Sun Cluster HA for Oracle packages	“Installing the Sun Cluster HA for Oracle Packages” on page 32
Register and configure Sun Cluster HA for Oracle	“How to Register and Configure Sun Cluster HA for Oracle with Single Instance ASM Using Sun Cluster Maintenance Commands” on page 47
Verify the Sun Cluster HA for Oracle installation	“Verifying the Sun Cluster HA for Oracle Installation” on page 57
Tune the Sun Cluster HA for Oracle fault monitor	“Tuning the Sun Cluster HA for Oracle Fault Monitors” on page 59
(Optional) Customize the Sun Cluster HA for Oracle server fault monitor	“Customizing the Sun Cluster HA for Oracle Server Fault Monitor” on page 64
(Optional) Upgrade Sun Cluster HA for Oracle resource types	“Upgrading Sun Cluster HA for Oracle Resource Types” on page 74
(Optional) Change the role of a DataGuard instance	“Changing the Role of a DataGuard Instance” on page 78

TABLE 3 Task Map: Installing and Configuring HA for Oracle with Clustered ASM

Task	Cross-Reference
Plan the Sun Cluster HA for Oracle installation and configuration	“Planning the Sun Cluster HA for Oracle Installation and Configuration” on page 16
Prepare the nodes and disks	“Preparing the Nodes and Disks” on page 19
Install the ASM software	“How to Install the ASM Software” on page 23
Install the Oracle software	“How to Install the Oracle Software” on page 24
Verify the Oracle installation	“How to Verify the Oracle Installation” on page 26

TABLE 3 Task Map: Installing and Configuring HA for Oracle with Clustered ASM (Continued)

Task	Cross-Reference
Create an Oracle database	“How to Create a Primary Oracle Database” on page 27
Set up Oracle database permissions	“How to Set Up Oracle Database Permissions” on page 28
Install the Sun Cluster HA for Oracle packages	“Installing the Sun Cluster HA for Oracle Packages” on page 32
Register and configure Sun Cluster HA for Oracle	“How to Register and Configure Sun Cluster HA for Oracle with Clustered ASM Instance Using Sun Cluster Maintenance Commands” on page 50
Verify the Sun Cluster HA for Oracle installation	“Verifying the Sun Cluster HA for Oracle Installation” on page 57
Tune the Sun Cluster HA for Oracle fault monitor	“Tuning the Sun Cluster HA for Oracle Fault Monitors” on page 59
(Optional) Customize the Sun Cluster HA for Oracle server fault monitor	“Customizing the Sun Cluster HA for Oracle Server Fault Monitor” on page 64
(Optional) Upgrade Sun Cluster HA for Oracle resource types	“Upgrading Sun Cluster HA for Oracle Resource Types” on page 74
(Optional) Change the role of a DataGuard instance	“Changing the Role of a DataGuard Instance” on page 78

Planning the Sun Cluster HA for Oracle Installation and Configuration

This section contains the information that you need to plan your Sun Cluster HA for Oracle installation and configuration.

Configuration Requirements



Caution – Your data service configuration might not be supported if you do not adhere to these requirements.

Use the requirements in this section to plan the installation and configuration of Sun Cluster HA for Oracle. These requirements apply to Sun Cluster HA for Oracle only. You must meet these requirements before you proceed with your Sun Cluster HA for Oracle installation and configuration. Sun Cluster HA for Oracle can be configured to run in non-global zones if

required. If you are configuring Sun Cluster HA for Oracle to run in a non-global zone, you must use a highly available local file system. You can also configure the Sun Cluster HA for Oracle in a zone cluster.



Caution – Raw devices from Sun Cluster device groups are not supported in non-global zones.

For requirements that apply to all data services, see “[Configuration Guidelines for Sun Cluster Data Services](#)” in *Sun Cluster Data Services Planning and Administration Guide for Solaris OS*.

- **Oracle application files** – These files include Oracle binaries, configuration files, and parameter files. You can install these files either on the local file system, the highly available local file system, or on the cluster file system.

See “[Configuration Guidelines for Sun Cluster Data Services](#)” in *Sun Cluster Data Services Planning and Administration Guide for Solaris OS* for the advantages and disadvantages of placing the Oracle binaries on the local file system, highly available local file system, and the cluster file system.

- **Database related files**– These files include the control file, redo logs, and data files. You must install these files on either raw devices or as regular files on the highly available local or cluster file system. Raw devices from Sun Cluster device groups are not supported in non-global zones.
- **ASM configuration** – Automatic Storage Management (ASM) is a new storage option introduced with Oracle database 10g that provides the services of a file system, logical volume manager, and software redundant array of independent disks (RAID) in a platform independent manner. If you are planning to install ASM, you should choose the appropriate ASM instance and disk group for your Oracle database installation. There are two types of ASM instances, single ASM instance and clustered ASM instance. See “[Choosing the Appropriate ASM Instance](#)” on page 95 for information on choosing the appropriate ASM instance. For more information on ASM, see the Oracle documentation corresponding to the Oracle database version you are using.

If the single instance Oracle database is installed on a node using an ASM disk group, then certain files are not included with in the ASM disk group and they are resided locally. You should ensure that these files are copied to the other cluster nodes from the node where the single instance Oracle database is created.

If you are using Oracle 11g database, you should copy the following directories to other cluster nodes:

- `${ORACLE_BASE}/diag/rdbms/sid`
- `${ORACLE_BASE}/admin`
- `${ORACLE_HOME}/dbs/pfile.ora`

If you are using Oracle 10g database, you should copy the following directories to other cluster nodes:

- `${ORACLE_HOME}/admin`
- `${ORACLE_HOME}/dbs/initsid.org`

In the following example, you use the `/usr/sfw/sbin/wget` command from the target cluster node to recursively copy the `${ORACLE_HOME}/admin` directory in Oracle 10g.

```
# su dbuser
cd ORACLE_HOME
/usr/sfw/bin/wget -r -nH --Cut-dirs=n ftp://user:password@host:ORACLE_HOME/admin
```

In the `/usr/sfw/sbin/wget` command, the `-r` option is for recursive copy and `-nH` option is for disabling prefixing of host directories. Specify the `--Cut-dirs` option to ignore directory components. For the detailed description of options for `/usr/sfw/sbin/wget`, see `wget` man page.

Configuration Planning Questions

Use the questions in this section to plan the installation and configuration of Sun Cluster HA for Oracle. Write the answers to these questions in the space that is provided on the data service worksheets in “[Configuration Worksheets](#)” in *Sun Cluster Data Services Planning and Administration Guide for Solaris OS*.

- What resource groups will you use for network addresses and application resources and the dependencies between them?
- What is the logical hostname (for failover services) or shared address (for scalable services) for clients that will access the data service?
- Where will the system configuration files reside?

See “[Configuration Guidelines for Sun Cluster Data Services](#)” in *Sun Cluster Data Services Planning and Administration Guide for Solaris OS* for the advantages and disadvantages of placing the Oracle binaries on the local file system rather than the cluster file system.

- Does your database setup require standby instances?

If you use the `clsetup` utility to register and configure Sun Cluster HA for Oracle, some of these questions are answered automatically by the utility.

For information about standby databases, see your Oracle documentation.

- Are you planning to use ASM storage?

If you are planning to use ASM storage, you should decide if you require single instance or clustered instance ASM. See “[Choosing the Appropriate ASM Instance](#)” on page 95 for information on how to choose the appropriate ASM installation.

For information about standby databases, see your Oracle documentation.

Preparing the Nodes and Disks

This section contains the procedures that you need to prepare the nodes and disks.

▼ How to Prepare the Nodes

Use this procedure to prepare for the installation and configuration of Oracle software.



Caution – Perform all of the steps in this section on all the nodes. If you do not perform all of the steps on all of the nodes, the Oracle installation is incomplete. An incomplete Oracle installation causes Sun Cluster HA for Oracle to fail during startup.

Note – Consult the Oracle documentation before you perform this procedure.

The following steps prepare your nodes and install the Oracle software.

- 1 **Become superuser on all of the cluster members.**
- 2 **Configure the cluster file system for Sun Cluster HA for Oracle.**



Caution – Raw devices from Sun Cluster device groups are not supported in non-global zones.

If raw devices contain the databases, configure the global devices for raw device access. See the *Sun Cluster Software Installation Guide for Solaris OS* for information about how to configure global devices.

If you use the Solaris Volume Manager software, configure the Oracle software to use UNIX file system (UFS) logging on mirrored metadevices or raw-mirrored metadevices. See the Solaris Volume Manager documentation for more information about how to configure raw-mirrored metadevices.

If you use the Solaris Zettabyte File System (ZFS) for Oracle files, configure a highly available local ZFS. For more information, see “How to Set Up the HAStoragePlus Resource Type to Make a Local Solaris ZFS Highly Available” in *Sun Cluster Data Services Planning and Administration Guide for Solaris OS*.

If you use the Sun QFS file system, configure the Sun QFS file system for using with Oracle. For more information on configuring the Sun QFS file system, see “Using the Sun QFS Shared File System” in *Sun Cluster Data Service for Oracle RAC Guide for Solaris OS*.

- 3 **Prepare the \$ORACLE_HOME directory on a local or multihost disk.**

Note – If you install the Oracle binaries on a local disk, use a separate disk if possible. Installing the Oracle binaries on a separate disk prevents the binaries from overwrites during operating environment reinstallation. When you use ASM you should create two \$ORACLE_HOME directories, one \$ORACLE_HOME directory for the Oracle database and the additional \$ORACLE_HOME directory for ASM.

4 On each node or zone, create an entry for the database administrator (DBA) group in the /etc/group file, and add potential users to the group.

You typically name the DBA group dba. Verify that the oracle users are members of the dba group, and add entries as necessary for other DBA users. Ensure that the group IDs are the same on all of the nodes or zones that run Sun Cluster HA for Oracle, as the following example illustrates.

```
dba:*:520:root,oracle
```

If you use ASM, you should add an additional entry for the DBA group in the /etc/group file for ASM.

```
dba:*:520:root,oracle,oraasm
```

You can create group entries in a network name service (for example, NIS or NIS+). If you create group entries in this way, add your entries to the local /etc/inet/hosts file to eliminate dependency on the network name service.

5 On each node or zone, create an entry for the Oracle user ID (oracle).

You typically name the Oracle user ID oracle. The following command updates the /etc/passwd and /etc/shadow files with an entry for the Oracle user ID.

```
# useradd -u 120 -g dba -d /Oracle-home oracle
```

Ensure that the oracle user entry is the same on all the nodes or zones that run Sun Cluster HA for Oracle.

If you use ASM, you should create an additional Oracle user ID for ASM.

```
# useradd -u 121 -g dba -d /asm-home oraasm
```

6 If you are using Oracle database 10.2.0.3 or higher, you should perform the following steps on each Solaris zone.

Note – You must perform these steps while creating a zone. If you fail to perform these steps, it results in an error. To resolve the error, you should set the necessary privileges and then run `ORACLE_HOME/bin/localconfig reset ORACLE_HOME`.

```
# zoneadm -Z zcname halt
zonecfg -Z zcname info limitpriv
```

```
zoneadm -Z zcname set limitpriv=default,proc_priocntl
zoneadm -Z zcname info limitpriv
zoneadm -Z zcname boot
```

▼ How to Configure the Oracle Database Access Using Solaris Volume Manager

Use this procedure to configure the Oracle database using Solaris Volume Manager.

Note – You can run this procedure only in the global zone.

1 Configure the disk devices for the Solaris Volume Manager software to use.

See the *Sun Cluster Software Installation Guide for Solaris OS* for information about how to configure the Solaris Volume Manager software.

2 If you use raw devices to contain the databases, run the following commands to change each raw-mirrored metadevice's owner, group, and mode.

If you do not use raw devices, do not perform this step.

a. If you create raw devices, run the following commands for each device on each node that can master the Oracle resource group.

```
# chown oracle /dev/md/metaset/rdisk/dn
# chgrp dba /dev/md/metaset/rdisk/dn
# chmod 600 /dev/md/metaset/rdisk/dn
```

metaset Specifies the name of the diskset

/rdisk/dn Specifies the name of the raw disk device within the *metaset* diskset

b. Verify that the changes are effective.

```
# ls -lL /dev/md/metaset/rdisk/dn
```

▼ How to Configure the Oracle Database Access Using Veritas Volume Manager

Use this procedure to configure the Oracle database using Veritas Volume Manager software.

Note – You can run this procedure only in the global zone.

- 1 **Configure the disk devices for the VxVM software to use.**
See the *Sun Cluster Software Installation Guide for Solaris OS* for information about how to configure Veritas Volume Manager.
- 2 **If you use raw devices to contain the databases, run the following commands on the current disk-group primary to change each device's owner, group, and mode.**
If you do not use raw devices, do not perform this step.
 - a. **If you create raw devices, run the following command for each raw device.**

```
# vxedit -g diskgroup set user=oracle group=dba mode=600 volume
```

diskgroup Specifies the name of the disk group

volume Specifies the name of the raw device within the disk group
 - b. **Verify that the changes are effective.**

```
# ls -lL /dev/vx/rdisk/diskgroup/volume
```
 - c. **Synchronize the device group with the cluster to keep the VxVM namespace consistent throughout the cluster.**

```
# cldevicegroup sync diskgroup
```

▼ How to Configure the Oracle Database Access Using ASM

Use this procedure to configure the Oracle database access using ASM. You can use ASM on the top of VxVM or SVM.

- 1 **Configure the disk devices for the ASM software to use.**
See the “Using ASM” in *Sun Cluster Data Service for Oracle RAC Guide for Solaris OS* for information about how to configure ASM.
- 2 **Setup the permissions for the Oracle ASM disks to be used by Oracle ASM disk groups.**
 - a. **Run the following commands for each device on each node that can master the Oracle resource group.**

```
# chown oraasm:dba /dev/did/rdisk/dn
```

```
# chmod 660 /dev/did/rdisk/dn
```
 - b. **Verify that the changes are effective.**

```
# ls -lhL /dev/did/rdisk/dn
```

How to Install the ASM Software

ASM installation consists of installing and creating an ASM instance and configuring the required ASM disk groups. An ASM disk group is a collection of disk devices to store data files that ASM instances manage as a unit. ASM instances mount disk groups to make ASM files available to database instances.

You should decide the type of ASM instance you want to use. You can use ASM instance as single instance ASM or clustered ASM using Oracle Clusterware instances. For information on how to choose the appropriate ASM instance, see [“Choosing the Appropriate ASM Instance” on page 95](#).

If you are using clustered ASM, you should first install the Oracle CRS software and then install ASM. If you are using clustered ASM on SPARC, you should also install the ORCLud1m package before installing ASM.

When you run Oracle Universal Installer, you have the option to configure and install ASM and create disk groups. For detailed information on installing and configuring ASM, see the Oracle documentation corresponding to the Oracle database version you are using.

When you create the same disk group with ASM on different cluster nodes, you must create the disk group one node at a time and dismount the disk group before creating the same disk group on another cluster node.

Note – You should setup and configure the file system, where the ASM ORACLE_HOME reside before performing the ASM installation.

How to Verify the ASM Software Installation

After installing ASM software, you can verify that ASM software is installed and ASM disk group is mounted on a cluster node by performing the following steps.

```
# sqlplus "/ as sysdba"
sql> select * from v$sga;
sql> select name,state from v$asm_diskgroup;
sql> exit;
#
```

Note – If you are using Oracle database 11g, you should use `sqlplus "/ as sysasm"` instead of `sqlplus "/ as sysdba"`.

Installing the Oracle Software

This section contains the procedure that you need to install Oracle software.

▼ How to Install the Oracle Software

1 Become superuser on a cluster member.

2 If you plan to install the Oracle software on a cluster file system, start the Sun Cluster software and become the owner of the device group.

If you plan to install the Oracle software at another location, omit this step.

For more information about installation locations, see [“Preparing the Nodes and Disks” on page 19](#).

3 Install the Oracle software.

Before you start the Oracle installation, ensure that the system resources required for Oracle have been configured. Log in as `oracle` to ensure ownership of the entire directory before you perform this step. See the appropriate Oracle installation and configuration guides for instructions about how to install Oracle software.

- If you are using the Solaris 9 OS, modify `/etc/system` file of each node as you would in standard Oracle installation procedures. Reboot each node so that the changes are effective.
- If you are using the Solaris 10 OS, you could use Solaris Resource Management (SRM) to ensure that the kernel parameters are set to at least the minimum values that Oracle requires. For more information about setting the Oracle kernel parameters, see [“How to Set the Oracle Kernel Parameters” on page 25](#). After the system resources have been configured for Oracle you can start the installation itself.

4 (Optional) If you are using Sun Cluster HA for Oracle with Oracle 10g R1, prevent the Oracle `cssd` daemon from being started. If you are using Sun Cluster HA for Oracle with Oracle 10g R2, omit this step.

Remove the entry for the Oracle `cssd` daemon from the `/etc/inittab` file on the node where the Oracle software is installed. To remove this entry, remove the following line from the `/etc/inittab` file:

```
h1:23:respawn:/etc/init.d/init.cssd run >/dev/null 2>&1 > </dev/null
```

Sun Cluster HA for Oracle does not require the Oracle `cssd` daemon. Therefore, removal of this entry does *not* affect the operation of Oracle 10g R1 with Sun Cluster HA for Oracle. If your Oracle installation changes so that the Oracle `cssd` daemon is required, restore the entry for this daemon to the `/etc/inittab` file.



Caution – If you are using Oracle 10g R1 Real Application Clusters, do *not* remove the entry for the `cssd` daemon from the `/etc/inittab` file.

If you remove the entry for the Oracle `cssd` daemon from the `/etc/inittab` file, you prevent unnecessary error messages from being displayed. Otherwise, an attempt by the `init(1M)` command to start the Oracle `cssd` daemon might cause such error messages to be displayed. These error messages are displayed if the Oracle binary files are installed on a highly available local file system or on the cluster file system. The messages are displayed repeatedly until the file system where the Oracle binary files are installed is mounted.

These error messages are as follows:

```
INIT: Command is respawning too rapidly. Check for possible errors.
id: h1 "/etc/init.d/init.cssd run >/dev/null 2>&1 >/dev/null"
```

```
Waiting for filesystem containing $CRSCTL.
```

If you are using Sun Cluster HA for Oracle on the x86 platform, unnecessary error messages about the unavailability of the UNIX Distributed Lock Manager (Oracle UDLM) might also be displayed.

These messages are displayed if the following events occur:

- A node is running in noncluster mode. In this situation, file systems that Sun Cluster controls are never mounted.
- A node is booting. In this situation, the messages are displayed repeatedly until Sun Cluster mounts the file system where the Oracle binary files are installed.
- Oracle is started on or fails over to a node or zone where the Oracle installation was *not* originally run. In such a configuration, the Oracle binary files are installed on a highly available local file system. In this situation, the messages are displayed on the console of the node or zone where the Oracle installation was run.

▼ How to Set the Oracle Kernel Parameters

The default project is modified to contain the resources required for Oracle as the RGM uses the default project for running the data service. If you want to use a specific SRM project for running Oracle, you must create that project and configure the system resources in that project using the same procedure. Specify the project name instead of default. When you configure the resource group or resource for the Oracle server, specify that project name in the corresponding property of the resource group or resource.

1 Display the settings for the default project.

```
phys-X# prctl -i project default
```

2 If no kernel parameters are set, or if any kernel parameters are not set to the minimum required value for Oracle as shown in the following table, set the parameter.

```
phys-X# projmod -s -K "parameter=(priv,value,deny)" default
```

Oracle Kernel Parameter	Minimum Required Value
process.max-sem-nsems	256
project.max-sem-ids	100
project.max-shm-ids	100
project.max-shm-memory	4294967295

See the *Oracle10g Installation Guide* for more information about these parameters.

3 Verify the new settings.

```
phys-X# prctl -i project default
```

Verifying the Oracle Installation and Configuration

This section contains the procedure that you need to verify the Oracle installation and configuration.

▼ How to Verify the Oracle Installation

This procedure does not verify that your application is highly available because you have not yet installed your data service.

1 Confirm that the owner, group, and mode of the \$ORACLE_HOME/bin/oracle file are as follows:

- Owner: oracle
- Group: dba
- Mode: -rwsr-s--x

```
# ls -l $ORACLE_HOME/bin/oracle
```

2 Verify that the listener binaries exist in the \$ORACLE_HOME/bin directory.

Next Steps When you have completed the work in this section, go to [“Creating an Oracle Database” on page 27](#).

Creating an Oracle Database

After verifying the Oracle installation and configuration, create the Oracle databases that you require. If you are using Oracle *without* standby databases, perform the procedure “[How to Create a Primary Oracle Database](#)” on page 27. This procedure is not required for any additional databases that you might create and configure. If you are using Oracle DataGuard, create the following database instances:

- **Primary database instance.** For instructions for creating a primary database, see “[How to Create a Primary Oracle Database](#)” on page 27.
- **Standby database instances.** A standby database instance can be either a physical standby database instance or a logical standby database instance. For instructions for creating standby database instances, see your Oracle documentation.

▼ How to Create a Primary Oracle Database

1 Prepare database configuration files.

Place all of the database-related files (data files, redo log files, and control files) on either shared raw global devices or on the cluster file system. See “[Preparing the Nodes and Disks](#)” on page 19 for information about installation locations.

Note – If the database exists in the non-global zone, do not place the database-related files on the shared raw devices.

Within the `init$ORACLE_SID.ora` or `config$ORACLE_SID.ora` file, you might need to modify the assignments for `control_files` and `background_dump_dest` to specify the locations of the control files and alert files.

Note – If you use Solaris authentication for database logins, set the `remote_os_authent` variable in the `init$ORACLE_SID.ora` file to `True`.

2 Start the creation of the database by using one utility from the following list:

- The Oracle installer
- The Oracle `sqlplus(1M)` command
- The Oracle Database Configuration Assistant

During creation, ensure that all the database-related files are placed in the appropriate location, either on shared global devices, on the cluster file system, or on a highly available local file system.

3 Verify that the file names of your control files match the file names in your configuration files.

4 Create the v\$sysstat view.

Run the catalog scripts that create the v\$sysstat view. The Sun Cluster HA for Oracle fault monitor uses this view.

Next Steps When you have completed the work in this section, go to [“Setting Up Oracle Database Permissions” on page 28.](#)

Setting Up Oracle Database Permissions



Caution – Do not perform the steps in this section for an Oracle physical standby database.

Perform the procedure in this section to set up database permissions for an Oracle primary database or an Oracle logical standby database.

▼ How to Set Up Oracle Database Permissions

1 Enable access for the user and password to be used for fault monitoring.

- To use the Oracle authentication method, grant to this user authority on the v_\$sysstat view and the v_\$archive_dest view.

```
# sqlplus "/ as sysdba"
```

```
sql> create user user identified by passwd;
sql> alter user user default tablespace system quota 1m on system;
sql> grant select on v_$sysstat to user;
sql> grant select on v_$archive_dest to user;
sql> grant select on v_$database to user;
sql> grant create session to user;
sql> grant create table to user;
```

```
sql> exit;
#
```

You can use this method for all the supported Oracle releases.

- To use the Solaris authentication method, perform the following steps:

a. Confirm that the remote_os_authent parameter is set to TRUE.

```
# sqlplus "/ as sysdba"
sql> show parameter remote_os_authent
```

NAME	TYPE	VALUE
remote_os_authent	boolean	TRUE

b. Determine the setting of the `os_authent_prefix` parameter.

```
# sql> show parameter os_authent_prefix
```

NAME	TYPE	VALUE
os_authent_prefix	string	ops\$

c. Grant permission for the database to use Solaris authentication.

```
sql> create user prefix user identified by externally default
tablespace system quota 1m on system;
sql> grant connect, resource to prefix user;
sql> grant select on v_$sysstat to prefix user;
sql> grant select on v_$archive_dest to prefix user;
sql> grant create session to prefix user;
sql> grant create table to prefix user;
sql> exit;
```

#

The replaceable items in these commands are as follows:

- *prefix* is the setting of the `os_authent_prefix` parameter. The default setting of this parameter is `ops$`.
- *user* is the user for whom you are enabling Solaris authentication. Ensure that this user owns the files under the `$ORACLE_HOME` directory.

Note – Do not type a space between *prefix* and *user*.

2 Configure NET8 for the Sun Cluster software.

The `listener.ora` file must be accessible from all the nodes or zones that are in the cluster. Place these files either under the cluster file system or in the local file system of each node or zone that can potentially run the Oracle resources.

Note – If you place the `listener.ora` file in a location other than the `/var/opt/oracle` directory or the `$ORACLE_HOME/network/admin` directory, you must specify the `TNS_ADMIN` variable or an equivalent Oracle variable in a user-environment file. For information about Oracle variables, see the Oracle documentation. You must also run the `clresource(1CL)` command to set the resource extension parameter `User_env`, which sources the user-environment file. See “[SUNW.oracle_listener Extension Properties](#)” on page 85 or “[SUNW.oracle_server Extension Properties](#)” on page 81 for format details.

Sun Cluster HA for Oracle imposes no restrictions on the listener name—it can be any valid Oracle listener name.

The following code sample identifies the lines in `listener.ora` that are updated.

```

LISTENER =
  (ADDRESS_LIST =
    (ADDRESS =
      (PROTOCOL = TCP)
        (HOST = logical-hostname) <- use logical hostname
        (PORT = 1527)
      )
    )
  .
  .
SID_LIST_LISTENER =
  .
  .
      (SID_NAME = SID) <- Database name,
default is ORCL

```

The following code sample identifies the lines in `tnsnames.ora` that are updated on client machines.

```

service_name =
  .
  .
      (ADDRESS =
        (PROTOCOL = TCP)
        (HOST = logicalhostname) <- logical hostname
        (PORT = 1527) <- must match port in LISTENER.ORA
      )
    )
  (CONNECT_DATA =
    (SID = <SID>)) <- database name, default is ORCL

```

The following example shows how to update the `listener.ora` and `tnsnames.ora` files for the following Oracle instances.

Instance	Logical Host	Listener
ora8	hadbms3	LISTENER-ora8
ora9	hadbms4	LISTENER-ora9

The corresponding listener.ora entries are the following entries.

```

LISTENER-ora9 =
  (ADDRESS_LIST =
    (ADDRESS =
      (PROTOCOL = TCP)
      (HOST = hadbms4)
      (PORT = 1530)
    )
  )
SID_LIST_LISTENER-ora9 =
  (SID_LIST =
    (SID_DESC =
      (SID_NAME = ora9)
    )
  )
LISTENER-ora8 =
  (ADDRESS_LIST =
    (ADDRESS= (PROTOCOL=TCP) (HOST=hadbms3) (PORT=1806))
  )
SID_LIST_LISTENER-ora8 =
  (SID_LIST =
    (SID_DESC =
      (SID_NAME = ora8)
    )
  )

```

The corresponding tnsnames.ora entries are the following entries.

```

ora8 =
  (DESCRIPTION =
    (ADDRESS_LIST =
      (ADDRESS = (PROTOCOL = TCP)
        (HOST = hadbms3)
        (PORT = 1806))
    )
    (CONNECT_DATA = (SID = ora8))
  )
ora9 =
  (DESCRIPTION =
    (ADDRESS_LIST =
      (ADDRESS =
        (PROTOCOL = TCP)

```

```
(HOST = hadbms4)
(PORT = 1530)
)
(CONNECT_DATA = (SID = ora9))
)
```

3 Verify that the Sun Cluster software is installed and running on all the nodes.

```
# cluster status +
```

Next Steps Go to [“Installing the Sun Cluster HA for Oracle Packages” on page 32](#) to install the Sun Cluster HA for Oracle packages.

Installing the Sun Cluster HA for Oracle Packages

If you did not install the Sun Cluster HA for Oracle packages during your initial Sun Cluster installation, perform this procedure to install the packages. To install the packages, use the Sun Java Enterprise System Common Installer.

Note – You need to install the Sun Cluster HA for Oracle packages in the global cluster and not in the zone cluster.

▼ How to Install the Sun Cluster HA for Oracle Packages

Perform this procedure on each cluster node where you are installing the Sun Cluster HA for Oracle packages.

You can run the Sun Java Enterprise System Common Installer with a command-line interface (CLI) or with a graphical user interface (GUI). The content and sequence of instructions in the CLI and the GUI are similar.

Note – Even if you plan to configure this data service to run in non-global zones, install the packages for this data service in the global zone. The packages are propagated to any existing non-global zones and to any non-global zones that are created after you install the packages.

Before You Begin Ensure that you have the Sun Java™ Availability Suite DVD-ROM.

If you intend to run the Sun Java Enterprise System Common Installer with a GUI, ensure that your DISPLAY environment variable is set.

1 On the cluster node where you are installing the data service packages, become superuser.

2 Load the Sun Java Availability Suite DVD-ROM into the DVD-ROM drive.

If the Volume Management daemon `vol1d(1M)` is running and configured to manage DVD-ROM devices, the daemon automatically mounts the DVD-ROM on the `/cdrom` directory.

3 Change to the Sun Java Enterprise System Common Installer directory of the DVD-ROM.

- **If you are installing the data service packages on the SPARC® platform, type the following command:**

```
# cd /cdrom/cdrom0/Solaris_sparc
```

- **If you are installing the data service packages on the x86 platform, type the following command:**

```
# cd /cdrom/cdrom0/Solaris_x86
```

4 Start the Sun Java Enterprise System Common Installer.

```
# ./installer
```

5 When you are prompted, accept the license agreement.

If any Sun Java Enterprise System components are installed, you are prompted to select whether to upgrade the components or install new software.

6 From the list of Sun Cluster agents under Availability Services, select the data service for Oracle.**7 If you require support for languages other than English, select the option to install multilingual packages.**

English language support is always installed.

8 When prompted whether to configure the data service now or later, choose Configure Later.

Choose Configure Later to perform the configuration after the installation.

9 Follow the instructions on the screen to install the data service packages on the node.

The Sun Java Enterprise System Common Installer displays the status of the installation. When the installation is complete, the wizard displays an installation summary and the installation logs.

10 (GUI only) If you do not want to register the product and receive product updates, deselect the Product Registration option.

The Product Registration option is not available with the CLI. If you are running the Sun Java Enterprise System Common Installer with the CLI, omit this step.

11 Exit the Sun Java Enterprise System Common Installer.

- 12 Unload the Sun Java Availability Suite DVD-ROM from the DVD-ROM drive.
 - a. To ensure that the DVD-ROM is not being used, change to a directory that does *not* reside on the DVD-ROM.
 - b. Eject the DVD-ROM.

```
# eject cdrom
```

Next Steps See “[Registering and Configuring Sun Cluster HA for Oracle](#)” on page 34 to register Sun Cluster HA for Oracle and to configure the cluster for the data service.

Registering and Configuring Sun Cluster HA for Oracle

Tools for Registering and Configuring Sun Cluster HA for Oracle

Sun Cluster provides the following tools for registering and configuring Sun Cluster HA for Oracle:

- **The `clsetup(1CL)` utility.** For more information, see “[How to Register and Configure Sun Cluster HA for Oracle by Using the `clsetup` Utility](#)” on page 35.
- **Sun Cluster Manager.** For more information, see the Sun Cluster Manager online help.
- **Sun Cluster maintenance commands.** For more information, see “[How to Register and Configure Sun Cluster HA for Oracle by Using Sun Cluster Maintenance commands Without Using ASM](#)” on page 40.

The `clsetup` utility and Sun Cluster Manager each provide a wizard for configuring Sun Cluster HA for Oracle. The wizards reduce the possibility for configuration errors that might result from command syntax errors or omissions. These wizards also ensure that all required resources are created and that all required dependencies between resources are set.

Setting Sun Cluster HA for Oracle Extension Properties

Use the extension properties in [Sun Cluster HA for Oracle Extension Properties](#) to create your resources. To set an extension property of a resource, include the option `-p property=value` in the `clresource(1CL)` command that creates or modifies the resource. Use the procedure in [Chapter 2, “Administering Data Service Resources,” in *Sun Cluster Data Services Planning and Administration Guide for Solaris OS*](#) to configure the extension properties if you have already created your resources. You can update some extension properties dynamically. You can

update others, however, only when you create or disable a resource. The Tunable entries indicate when you can update each property. See [Appendix B, “Standard Properties,” in *Sun Cluster Data Services Planning and Administration Guide for Solaris OS*](#) for details about all Sun Cluster properties.

“[SUNW.oracle_server Extension Properties](#)” on [page 81](#) describes the extension properties that you can set for the Oracle server. For the Oracle server, you are required to set only the following extension properties:

- ORACLE_HOME
- ORACLE_SID
- Alert_log_file
- Connect_string

▼ How to Register and Configure Sun Cluster HA for Oracle by Using the `clsetup` Utility

This procedure provides the long forms of the Sun Cluster maintenance commands. Most commands also have short forms. Except for the forms of the command names, the commands are identical. For a list of the commands and their short forms, see [Appendix A, “Sun Cluster Object-Oriented Commands,” in *Sun Cluster 3.1 - 3.2 Hardware Administration Manual for Solaris OS*](#)

Note – The `clsetup` utility does not support configuration of Sun Cluster HA for Oracle with ZFS.

Before You Begin Ensure that the following prerequisites are met:

- The volume manager of the cluster is configured to provide volumes on shared storage that are accessible from any node where Oracle could potentially run.
- Raw devices and file systems on the storage volumes that Oracle will use for its database are created.
- The Oracle software is installed to be accessible from all nodes or zones where Oracle could potentially run.
- Kernel variables for the UNIX operating system are configured for Oracle.
- The Oracle software is configured for all nodes or zones that could potentially run Oracle.
- The data service packages are installed.

Ensure that you have the following information:

- The names of the cluster nodes or zones that master the data service.
- The logical hostname that clients use to access the data service. Normally, you set up this IP address when you install the cluster. See the *Sun Cluster Concepts Guide for Solaris OS* for details about network resources.
- The path to the Oracle application binaries for the resources that you plan to configure.
- The database type.

1 Become superuser on any cluster node.

2 Start the `clsetup` utility.

```
# clsetup
```

The `clsetup` main menu is displayed.

3 Type the number that corresponds to the option for data services and press Return.

The Data Services menu is displayed.

4 Type the number that corresponds to the option for configuring Sun Cluster HA for Oracle and press Return.

The `clsetup` utility displays the list of prerequisites for performing this task.

5 Verify that the prerequisites are met, and press Return.

The `clsetup` utility displays a list of the cluster nodes.

6 Select the nodes or zones where you require Oracle to run.

- **To accept the default selection of all listed nodes or zones in an arbitrary order, press Return.**

- **To select a subset of the listed nodes or zones, type a comma-separated or space-separated list of the numbers that correspond to the nodes or zones. Then press Return.**

Ensure that the nodes or zones are listed in the order in which the nodes or zones are to appear in the node list of the resource group in which the Oracle resource is to be placed. The first node or zone in the list is the primary node or zone of this resource group.

- **To select all nodes or zones in a particular order, type a comma-separated or space-separated ordered list of the numbers that correspond to the nodes or zones and press Return.**

Ensure that the nodes or zones are listed in the order in which the nodes or zones are to appear in the node list of the resource group in which the Oracle resource is to be placed. The first node or zone in the list is the primary node or zone of this resource group.

7 To confirm your selection of nodes or zones, type d and press Return.

The `clsetup` utility displays the types of Oracle components that are to be configured.

8 Type the numbers of the Oracle components you want to configure and press Return.

The `clsetup` utility lists the Oracle home directory.

9 Specify the Oracle home directory for your installation of the Oracle software.**▪ If the directory is listed, select the directory as follows:****a. Type the number that corresponds the directory that you are selecting.**

The `clsetup` utility displays a list of Oracle system identifiers that are configured on the cluster. The utility also prompts you to specify the system identifier for your installation of Oracle.

▪ If the directory is not listed, specify the directory explicitly.**a. Type e and press Return.**

The `clsetup` utility prompts you for the Oracle home directory.

b. Type the full path to the Oracle home directory and press Return.

The `clsetup` utility displays a list of Oracle system identifiers that are configured on the cluster. The utility also prompts you to specify the system identifier for your installation of Oracle.

10 Specify the Oracle SID of the Oracle database that you are configuring.**▪ If the SID is listed, select the SID as follows:****a. Type the number that corresponds the SID that you are selecting.**

The `clsetup` utility displays the properties of the Sun Cluster resources that the utility will create.

▪ If the SID is not listed, specify the SID explicitly.**a. Type e and press Return.**

The `clsetup` utility prompts you for the SID.

b. Type the SID and press Return.

The `clsetup` utility displays the properties of the Sun Cluster resources that the utility will create.

The `clsetup` utility displays the properties of the Sun Cluster resources that the utility will create.

11 If you require a different name for any Sun Cluster resources properties, change each name as follows.

a. Type the number that corresponds to the name that you are changing and press Return.

The `clsetup` utility displays a screen where you can specify the new name.

b. At the New Value prompt, type the new name and press Return.

The `clsetup` utility returns you to the list of the properties of the Sun Cluster resource that the utility will create.

12 To confirm your selection of Sun Cluster resource properties, type `d` and press Return.

The `clsetup` utility displays a list of existing storage resources. If no storage resources are available, the `clsetup` utility displays a list of shared storage types where data is to be stored.

13 Type the numbers that correspond to type of shared storage that you are using for storing the data and press Return.

The `clsetup` utility displays the file-system mount points that are configured in the cluster.

14 Select the file system mount points as follows.

- **To accept the default selection of all listed file-system mount points in an arbitrary order, type `a`. Then press Return.**
- **To select a subset of the listed file system mount points, type a comma-separated or space-separated list of the numbers that correspond to the file-system mount points. Then press Return.**

The `clsetup` utility displays the global disk sets and device groups that are configured in the cluster.

15 Select the device groups as follows.

- **To accept the default selection of all listed device groups in an arbitrary order, type `a` and press Return.**
- **To select a subset of the listed device groups, type a comma-separated or space-separated list of the numbers that correspond to the device groups and press Return.**

The `clsetup` utility returns to you the list of highly available storage resources.

- 16 Type a comma-separated or space-separated list of the numbers that correspond to the storage resources that your data service requires, and press Return.**
- 17 To confirm your selection of Sun Cluster storage resources, type `d` and press Return.**

The `clsetup` utility displays all the existing logical hostname resources in the cluster. If there are no logical hostname resources available, the `clsetup` utility prompts for the logical hostname that the resource is to make highly available.
- 18 Specify the logical hostname and press Return.**

The `clsetup` utility returns to you the list of available logical hostname resources.
- 19 Type a comma-separated or space-separated list of the numbers that correspond to the logical hostname resources that your data service requires, and press Return.**
- 20 To confirm your selection of Sun Cluster logical hostname resources, type `d` and press Return.**

The `clsetup` utility displays the names of the Sun Cluster objects that the utility will create.
- 21 If you require a different name for any Sun Cluster objects, change each name as follows.**
 - **Type the number that corresponds to the name that you are changing and press Return.**

The `clsetup` utility displays a screen where you can specify the new name.
 - **At the New Value prompt, type the new name and press Return.**

The `clsetup` utility returns you to the list of the names of the Sun Cluster objects that the utility will create.
- 22 To confirm your selection of Sun Cluster object names, type `d` and press Return.**
- 23 To create the configuration, type `c` and Press Return.**

The `clsetup` utility displays a progress message to indicate that the utility is running commands to create the configuration. When configuration is complete, the `clsetup` utility displays the commands that the utility ran to create the configuration.
- 24 Press Return to continue.**
- 25 (Optional) Type `q` and press Return repeatedly until you quit the `clsetup` utility.**

If you prefer, you can leave the `clsetup` utility running while you perform other required tasks before using the utility again.

▼ How to Register and Configure Sun Cluster HA for Oracle by Using Sun Cluster Maintenance commands Without Using ASM

This procedure provides the long forms of the Sun Cluster maintenance commands. Most commands also have short forms. Except for the forms of the command names, the commands are identical. For a list of the commands and their short forms, see [Appendix A, “Sun Cluster Object-Oriented Commands,”](#) in *Sun Cluster 3.1 - 3.2 Hardware Administration Manual for Solaris OS*

Before You Begin Ensure that the following prerequisites are met:

- The volume manager of the cluster is configured to provide volumes on shared storage that are accessible from any node where Oracle could potentially run.
- Raw devices and file systems on the storage volumes that Oracle will use for its database are created.
- The Oracle software is installed to be accessible from all nodes or zones where Oracle could potentially run.
- Kernel variables for the UNIX operating system are configured for Oracle.
- The Oracle software is configured for all nodes or zones that could potentially run Oracle.
- The data service packages are installed.

Ensure that you have the following information:

- The names of the cluster nodes or zones that master the data service.
- The logical hostname that clients use to access the data service. Normally, you set up this IP address when you install the cluster. See the *Sun Cluster Concepts Guide for Solaris OS* for details about network resources.
- The path to the Oracle application binaries for the resources that you plan to configure.
- The database type.

1 On a cluster member, become superuser or assume a role that provides `solaris.cluster.modify` and `solaris.cluster.admin` RBAC authorizations.

2 Register the resource types for the data service.

For Sun Cluster HA for Oracle, you register two resource types, `SUNW.oracle_server` and `SUNW.oracle_listener`, as follows.

```
# clresourcetype register SUNW.oracle_server
# clresourcetype register SUNW.oracle_listener
```


3 Create a failover resource group to hold the network and application resources.

This step is not required if you use the Solaris ZFS, because the resource group was created when the highly available local ZFS was configured. The resources that are created in other steps in this procedure are to be added to this resource group.

You can optionally select the set of nodes or zones on which the data service can run with the `-n` option, as follows.

```
# clresourcegroup create [-n node-zone-list] resource-group
```

`-n node-zone-list` Specifies a comma-separated, ordered list of zones that can master this resource group. The format of each entry in the list is `node:zone`. In this format, `node` specifies the name or ID of a node and `zone` specifies the name of a non-global Solaris zone. To specify the global zone, or to specify a node without non-global zones, specify only `node`.

The order in this list determines the order in which the nodes or zones are considered primary during failover. This list is optional. If you omit this list, the global zone of each cluster node can master the resource group.

`resource-group` Specifies the name of the resource group. This name can be your choice but must be unique for resource groups within the cluster.

4 Verify that all of the network resources that you use have been added to your name service database.

You should have performed this verification during the Sun Cluster installation.

Note – Ensure that all of the network resources are present in the server's and client's `/etc/inet/hosts` file to avoid any failures because of name service lookup.

5 Add a logical hostname resource to the failover resource group.

```
# clreslogicalhostname create -g resource-group [-h logicalhostname] \
logicalhostname-rs
```

`logicalhostname` Specifies a logical hostname. This logical hostname must present in your name service database. If `logicalhostname` and `logicalhostname-rs` are identical, `logicalhostname` is optional.

`logicalhostname-rs` Specifies the name that you are assigning to the logical hostname resource that you are creating.

6 Register the SUNW.HASStoragePlus resource type with the cluster.

```
# clresourcetype register SUNW.HASStoragePlus
```

7 Add a resource of type SUNW.HASStoragePlus to the failover resource group.



Caution – Raw devices from Sun Cluster device groups are not supported in non-global zones.

Note – The SUNW.HASStoragePlus resource type must be version 4 if it is to be supported in non-global zones.

Note – If you use the Solaris ZFS for Oracle files, omit this step. The SUNW.HASStoragePlus resource was created when the highly available local ZFS was configured. For more information, see [“How to Prepare the Nodes” on page 19](#).

```
# clresource create -g resource-group -t SUNW.HASStoragePlus \
-p GlobalDevicePaths=device-path \
-p FilesystemMountPoints=mount-point-list \
-p AffinityOn=TRUE hastp-rs
```

You must set either the GlobalDevicePaths extension property or the FilesystemMountPoints extension property:

- If your database is on a raw device, set the GlobalDevicePaths extension property to the global device path.
- If your database is on the cluster file system, specify mount points of the cluster file system and the local file system.

Note – AffinityOn must be set to TRUE and the local file system must reside on global disk groups to be failover.

The resource is created in the enabled state.

8 Bring online the failover resource group in a managed state on a cluster node or zone.

```
# clresourcegroup online -M resource-group
```

-M Places the resource group that is brought online in a managed state.

9 Create Oracle application resources in the failover resource group.

- Oracle server resource:

```
# clresource create -g resourcegroup \
-t SUNW.oracle_server \
-p Connect_string=user/passwd \
-p ORACLE_SID=instance \
```

```
-p ORACLE_HOME=Oracle-home \
-p Alert_log_file=path-to-log \
-p Restart_type=entity-to-restart \
[-p Dataguard_role=role] \
[-p Standby_mode=mode] \-p resource_dependencies=storageplus-resource \
resource
```

- Oracle listener resource:

```
# clresource create -g resource-group \
-t SUNW.oracle_listener \
-p LISTENER_NAME=listener \
-p ORACLE_HOME=Oracle-home \
-p resource_dependencies=storageplus-resource resource
```

-g *resource-group*

Specifies the name of the resource group into which the resources are to be placed.

-t SUNW.oracle_server/listener

Specifies the type of the resource to add.

-p Alert_log_file=*path-to-log*

Sets the path under \$ORACLE_HOME for the server message log.

-p Connect_string=*user/passwd*

Specifies the user and password that the fault monitor uses to connect to the database. These settings must agree with the permissions that you set up in [“How to Set Up Oracle Database Permissions” on page 28](#). If you use Solaris authorization, type a slash (/) instead of the user name and password.

-p ORACLE_SID=*instance*

Sets the Oracle system identifier.

-p LISTENER_NAME=*listener*

Sets the name of the Oracle listener instance. This name must match the corresponding entry in `listener.ora`.

-p ORACLE_HOME=*Oracle-home*

Sets the path to the Oracle home directory.

-p Restart_type=*entity-to-restart*

Specifies the entity that the server fault monitor restarts when the response to a fault is restart. Set *entity-to-restart* as follows:

- To specify that only this resource is restarted, set *entity-to-restart* to RESOURCE_RESTART. By default, only this resource is restarted.
- To specify that all resources in the resource group that contains this resource are restarted, set *entity-to-restart* to RESOURCE_GROUP_RESTART.

If you set *entity-to-restart* to RESOURCE_GROUP_RESTART, all other resources (such as Apache or DNS) in the resource group are restarted, even if they are not faulty.

Therefore, include in the resource group only the resources that you require to be restarted when the Oracle server resource is restarted.

-p `Dataguard_role=role`

Specifies the role of the database instance. Change *role* as follows:

- To create a resource for a primary database instance that does not have standby instances configured, change *role* to NONE. This value is the default value.
- To create a resource for a primary database instance that has standby database instances configured, change *role* to PRIMARY.
- To create a resource for a standby database instance, change *role* to STANDBY.

-p `Standby_mode=mode`

Specifies the mode for the standby database instance. If you change `Dataguard_role` to NONE or PRIMARY, the value of the `Standby_mode` is ignored.

- To specify a logical standby database, change *mode* to LOGICAL. This value is the default value.
- To specify a physical standby database, change *mode* to PHYSICAL.

resource

Specifies the name of the resource that you are creating.

Note – Optionally, you can set additional extension properties that belong to the Oracle data service to override their default values. See [“Setting Sun Cluster HA for Oracle Extension Properties” on page 34](#) for a list of extension properties.

The resources are created in the enabled state.

Example 1 Registering Sun Cluster HA for Oracle to Run in the Global Zone

The following example shows how to register Sun Cluster HA for Oracle on a two-node cluster.

Cluster Information

```
Node names: phys-schost-1, phys-schost-2
Logical Hostname: schost-1
Resource group: resource-group-1 (failover resource group)
HAStoragePlus Resource: hastp-rs
Oracle Resources: oracle-server-1, oracle-listener-1
Oracle Instances: ora-lsnr (listener), ora-srvr (server)
```

(Create the failover resource group to contain all of the resources.)

```
# clresourcegroup create resource-group-1
```

(Add the logical hostname resource to the resource group.)

```
# clreslogicalhostname create -g resource-group-1 schost-1
```

```

(Register the SUNW.HASStoragePlus resource type.)
# clresourcetype register SUNW.HASStoragePlus

(Add a resource of type SUNW.HASStoragePlus to the resource group.)
# clresource create -g resource-group-1 -t SUNW.HASStoragePlus \
-p FileSystemMountPoints=/global/oracle,/global/ora-data/logs,local/ora-data \
-p AffinityOn=TRUE hastp-rs
(Bring the resource group online in a managed state)
# clresourcegroup online -M resource-group-1

(Register the Oracle resource types.)
# clresourcetype register SUNW.oracle_server
# clresourcetype register SUNW.oracle_listener

(Add the Oracle application resources to the resource group.)
# clresource create -g resource-group-1 \
-t SUNW.oracle_server -p ORACLE_HOME=/global/oracle \
-p Alert_log_file=/global/oracle/message-log \
-p ORACLE_SID=ora-srvr -p Connect_string=scott/tiger \
-p Dataguard_role=STANDBY -p Standby_mode=PHYSICAL oracle-server-1

# clresource create -g resource-group-1 \
-t SUNW.oracle_listener -p ORACLE_HOME=/global/oracle \
-p LISTENER_NAME=ora-lsnr oracle-listener-1

```

Example 2 Registering Sun Cluster HA for Oracle to Run in the Non-Global Zone

The following example shows how to register Sun Cluster HA for Oracle on a two-node cluster.

Cluster Information

```

Node names: phys-schost-1, phys-schost-2
Non-global zone names: sc1zone1, sc2zone1
Logical Hostname: schost-1
Resource group: resource-group-1 (failover resource group)
HASStoragePlus Resource: hastp-rs
Oracle Resources: oracle-server-1, oracle-listener-1
Oracle Instances: ora-lsnr (listener), ora-srvr (server)

```

```

(Create the failover resource group to contain all of the resources.)
# clresourcegroup create phys-schost-1:sc1zone1,phys-schost-2:sc2zone1 \
resource-group-1

(Add the logical hostname resource to the resource group.)
# clreslogicalhostname create -g resource-group-1 schost-1

(Register the SUNW.HASStoragePlus resource type.)
# clresourcetype register SUNW.HASStoragePlus

```

```

(Add a resource of type SUNW.HASStoragePlus to the resource group.)
# clresource create -g resource-group-1 -t SUNW.HASStoragePlus \
-p FileSystemMountPoints=/global/oracle,/global/ora-data/logs,local/ora-data \
-p AffinityOn=TRUE hastp-rs

(Bring the resource group online in a managed state)
# clresourcegroup online -M resource-group-1

(Register the Oracle resource types.)
# clresourcetype register SUNW.oracle_server
# clresourcetype register SUNW.oracle_listener

(Add the Oracle application resources to the resource group.)
# clresource create -g resource-group-1 \
-t SUNW.oracle_server -p ORACLE_HOME=/global/oracle \
-p Alert_log_file=/global/oracle/message-log \
-p ORACLE_SID=ora-srvr -p Connect_string=scott/tiger \
-p Dataguard_role=STANDBY -p Standby_mode=PHYSICAL oracle-server-1

# clresource create -g resource-group-1 \
-t SUNW.oracle_listener -p ORACLE_HOME=/global/oracle \
-p LISTENER_NAME=ora-lsnr oracle-listener-1
    
```

Example 3 Registering Sun Cluster HA for Oracle to Run in a Zone Cluster

The following example shows how to register Sun Cluster HA for Oracle in a zone cluster.

Cluster Information

```

Node names: phys-schost-1, phys-schost-2
zone cluster names: zonecluster1, zonecluster2
Logical Hostname: zchost-1
Resource group: resource-group-1 (failover resource group)
HASStoragePlus Resource: hastp-rs
Oracle Resources: oracle-server-1, oracle-listener-1
Oracle Instances: ora-lsnr (listener), ora-srvr (server)
    
```

(Create the failover resource group to contain all of the resources.)

```
# clresourcegroup create -Z zonecluster1 resource-group-1
```

(Add the logical hostname resource to the resource group.)

```
# clreslogicalhostname create -Z zonecluster1 -g resource-group-1 zchost-1
```

(Register the SUNW.HASStoragePlus resource type.)

```
# clresourcetype register -Z zonecluster1 SUNW.HASStoragePlus
```

(Add a resource of type SUNW.HASStoragePlus to the resource group.)

```
# clresource create -Z zonecluster1 -g resource-group-1 -t SUNW.HASStoragePlus \
-p FileSystemMountPoints=/global/oracle,/global/ora-data/logs,local/ora-data \
```

```

-p AffinityOn=TRUE hastp-rs

(Bring the resource group online in a managed state
# clresourcegroup online -Z zonecluster1 -M resource-group-1

(Register the Oracle resource types.)
# clresourcetype register -Z zonecluster1 SUNW.oracle_server
# clresourcetype register -Z zonecluster1 SUNW.oracle_listener

(Add the Oracle application resources to the resource group.)
# clresource create -Z zonecluster1 -g resource-group-1 \
-t SUNW.oracle_server -p ORACLE_HOME=/global/oracle \
-p Alert_log_file=/global/oracle/message-log \
-p ORACLE_SID=ora-srvr -p Connect_string=scott/tiger \
-p Dataguard_role=STANDBY -p Standby_mode=PHYSICAL oracle-server-1

# clresource create -Z zonecluster1 -g resource-group-1 \
-t SUNW.oracle_listener -p ORACLE_HOME=/global/oracle \
-p LISTENER_NAME=ora-lsnr oracle-listener-1

```

▼ How to Register and Configure Sun Cluster HA for Oracle with Single Instance ASM Using Sun Cluster Maintenance Commands

This procedure explains the steps to register and configure single instance ASM using Sun Cluster maintenance commands where Oracle_Home for ASM is on a local file system.

Note – ASM disk group and Oracle database can be configured in different resource groups. If the ASM disk group and Oracle database are configured in different resource groups, you should set a strong positive affinity(+++) between the ASM disk group resource group and Oracle database resource group.

1 On a cluster member, become superuser or assume a role that provides `solaris.cluster.modify` and `solaris.cluster.admin` RBAC authorizations.

2 Register the ASM resource types for the data service.

```

# clresourcetype register SUNW.scalable_asm_instance
# clresourcetype register SUNW.asm_diskgroup

```

3 Create a scalable resource group `asm-inst-rg` for the ASM instance.

```

# clresourcegroup create -S asm-inst-rg

```

-S `asm-inst-rg` Specifies the name of the scalable resource group for the ASM instance.

4 Add a logical hostname resource to the `asm-dg-rg` resource group.

```
# clreslogicalhostname create -g asm-dg-rg [-h logicalhostname] \
logicalhostname-rs
```

`-h logicalhostname` Specifies a logical hostname. This logical hostname must present in your name service database. If `logicalhostname` and `logicalhostname-rs` are identical, `logicalhostname` is optional.

`logicalhostname-rs` Specifies the name that you are assigning to the logical hostname resource that you are creating.

5 Add a resource of type `SUNW.scalable_asm_instance` to the `asm-inst-rg` resource group.

```
# clresource create -g asm-inst-rg -t SUNW.scalable_asm_instance
-p ORACLE_HOME=oracle-home \
-d asm-inst-rs
```

`-g asm-inst-rg`
Specifies the name of the resource group for the ASM instance.

`-p ORACLE_HOME=oracle-home`
Sets the path to the Oracle home directory.

`-d asm-inst-rs`
Specifies the name of the ASM instance resource that you are creating.

6 Bring online the scalable resource group in a managed state on a cluster node.

```
# clresourcegroup online -eM asm-inst-rg
```

7 Create an ASM disk resource group `asm-dg-rg`.

```
# clresourcegroup create asm-dg-rg
```

8 Set a strong positive affinity on ASM disk group by the resource group `asm-dg-rg`.

```
# clresourcegroup set -p rg_affinities=++asm-inst-rg asm-dg-rg
```

9 Add a resource of type `SUNW.asm_diskgroup` to the `asm-dg-rg` resource group.

```
# clresource create -g asm-dg-rg -t SUNW.asm_diskgroup -p asm_diskgroups=dg \
-p resource_dependencies_offline_restart=asm-inst-rs -d asm-dg-rs
```

10 Bring online the ASM disk resource group in a managed state.

```
# clresource online -eM asm-dg-rg
```

11 Verify the Oracle ASM installation by issuing the status command.

```
# clresource status +
```


12 Register the resource types for the Sun Cluster HA for Oracle data service.

For Sun Cluster HA for Oracle, you register the resource types `SUNW.oracle_server` and `SUNW.oracle_listener` as follows.

```
# clresourcetype register SUNW.oracle_server
# clresourcetype register SUNW.oracle_listener
```

13 Create Oracle application resources in the failover resource group.

- Oracle server resource:

```
# clresource create -g asm-dg-rg \
-t SUNW.oracle_server \
-p Connect_string=user/passwd \
-p ORACLE_SID=instance \
-p ORACLE_HOME=Oracle-home \
-p Alert_log_file=path-to-log \
-p Restart_type=entity-to-restart \
-p Resource_dependencies_offline_restart=asm-dg-rs \
-d ora-db-rs
```

- Oracle listener resource:

```
# clresource create -g asm-dg-rg \
-t SUNW.oracle_listener \
-p LISTENER_NAME=listener \
-p ORACLE_HOME=Oracle-home \
-p resource_dependencies_offline_restart=asm-dg-rs logicalhostname-rs \
-d ora-lsr-rs
```

-g *asm-dg-rg*

Specifies the name of the ASM disk resource group into which the resources are to be placed.

-t *SUNW.oracle_server/listener*

Specifies the type of the resource to add.

-p *Alert_log_file=path-to-log*

Sets the path under `$ORACLE_HOME` for the server message log.

-p *Connect_string=user/passwd*

Specifies the user and password that the fault monitor uses to connect to the database. These settings must agree with the permissions that you set up in [“How to Set Up Oracle Database Permissions” on page 28](#). If you use Solaris authorization, type a slash (/) instead of the user name and password.

-p *ORACLE_SID=instance*

Sets the Oracle system identifier.

-p *LISTENER_NAME=listener*

Sets the name of the Oracle listener instance. This name must match the corresponding entry in `listener.ora`.

-p ORACLE_HOME=*Oracle-home*
Sets the path to the Oracle home directory.

Note – Optionally, you can set additional extension properties that belong to the Oracle data service to override their default values. See “[Setting Sun Cluster HA for Oracle Extension Properties](#)” on page 34 for a list of extension properties.

14 Bring online the Oracle server resource.

```
# clresource enable ora-db-rs
```

15 Bring online the Oracle listener resource.

```
# clresource enable ora-lsr-rs
```

▼ How to Register and Configure Sun Cluster HA for Oracle with Clustered ASM Instance Using Sun Cluster Maintenance Commands

This procedure explains the steps to register and configure Sun Cluster HA for Oracle with clustered ASM instance using Sun Cluster maintenance commands.

Note – You should install the Oracle CRS software before performing the steps in this procedure.

- 1 On a cluster member, become superuser or assume a role that provides `solaris.cluster.modify` and `solaris.cluster.admin` RBAC authorizations.**

Note – You can also use the `clsetup` utility to perform the steps 1 to 6 in the procedure.

- 2 Register the resource types for Oracle RAC framework and CRS framework.**

```
# clresourcetype register SUNW.rac_framework  
# clresourcetype register SUNW.crs_framework
```

- 3 Create a scalable resource group `rac-fmwk-rg`.**

```
# clresourcegroup create -S rac-fmwk-rg
```

- 4 Add a resource of type `SUNW.rac_f_framework` to the `rac-fmwk-rg` resource group.**

```
# clresource create -g rac-fmwk-rg -t SUNW.rac_framework rac-fmwk-rs
```

5 Add a resource of type SUNW.crs_framework to the rac-fmwk-rg resource group.

```
# clresource create -g rac-fmwk-rg -t SUNW.crs_framework \
-p resource_dependencies=rac-fmwk-rs \
-d crs-fmwk-rs
```

6 Create a failover resource group ora-db-rg for the Oracle database.

```
# clresourcegroup create ora-db-rg
```

7 SPARC: If you are using SPARC, perform the following steps. Other wise go to [Step 8](#).

Note – You can perform this step only if you have installed the ORCLudlm package before performing the ASM software installation.

a. Register the resource type for Oracle UDLM.

```
# clresourcetype register SUNW.rac_udlm
```

b. Add a resource of type SUNW.rac_udlm to the rac-fmwk-rg resource group.

```
# clresource create -g rac-fmwk-rg -t SUNW.rac_udlm \
-p resource_dependencies=rac-fmwk-rs rac-udlm-rs
```

8 Register the appropriate resource type for the file system you are using and create a resource group.

Note – You should decide the file system you are going to use for Oracle_Home and set up the file system before performing this step. For information on how to setup a file system, see “Preparing the Nodes and Disks” on page 19.

If you are using a QFS shared file system, perform the following steps to register the QFS shared file system resource type and create the resource groups. Otherwise, you should use the SUNW.HASStoragePlus resource type.

- **If you are using QFS shared file system, perform the following steps to register the QFS shared file system resource type and create the resource groups. Otherwise, you should use the SUNW.HASStoragePlus resource type.**

a. Register the resource type for QFS shared file system.

```
# clresourcetype register SUNW.qfs
```

b. Create a resource group qfs-rg.

```
# clresourcegroup create qfs-rg
```

c. Add a resource of type SUNW.qfs to the qfs-rg resource group.

```
# clresource create -g qfs-rg -t SUNW.qfs -p QFSFileSystem=qfs-mp qfs-rs
```

<code>-g qfs-rg</code>	Specifies the name of the resource group.
<code>-t SUNW.qfs</code>	Specifies the type of the resource to add.
<code>-p QFSFileSystem=qfs-mp</code>	Specifies the QFS shared file system mount point.
<code>qfs-rs</code>	Specifies the name of the QFS shared file system resource that you are creating.

d. Bring online the *qfs-rg* resource group in a managed state on a cluster node.

```
# clresourcegroup online -eM qfs-rg
```

e. Register the resource type for `SUNW.ScalMountPoint`.

```
# clresourcetype register SUNW.ScalMountPoint
```

f. Create a scalable resource group *scal-mp-rg*.

```
# clresourcegroup create -S scal-mp-rg
```

g. Add a resource of type `SUNW.ScalMountPoint` to the *scal-mp-rg* resource group.

```
# clresource create -g scal-mp-rg -t SUNW.ScalMountPoint \
-p mountpointdir=mount-point \
-p filesystemtype=s-qfs \
-p targetfilesystem=qfs-name \
-p resource_dependencies=qfs-rs \
-d scal-mp-rs
```

```
-g scal-mp-rg
    Specifies the name of the scalable resource group.
```

```
-t SUNW.ScalMountPoint
    Specifies the type of the resource to add.
```

```
-p mountpointdir=mount-point
    Specifies the directory to which the file system is mounted.
```

```
-p filesystemtype=s-qfs
    Specifies the file system type you are using.
```

```
-p targetfilesystem=qfs-name
    Specifies the file system name that is mounted on this mount point.
```

```
-d scal-mp-rs
    Specifies the name of the scalable mount point resource that you are creating.
```

h. Bring online the *scal-mp-rg* resource group in a managed state on a cluster node.

```
# clresourcegroup online -eM scal-mp-rg
```

- If you are using file systems other than QFS shared file system, perform the following steps to register the `SUNW.HASStoragePlus` resource type and create the resource groups.

- a. Register the resource type for `SUNW.HASStoragePlus` resource type.

```
# clresourcetype register SUNW.HASStoragePlus
```

- b. Add a resource of type `SUNW.HASStoragePlus` to the `ora-db-rg` resource group.

```
# clresource create -g ora-db-rg -t SUNW.HASStoragePlus \
-p filesystemmountpoints=mount-point-list -d hastp-rs
```

- c. Bring online the `ora-db-rg` resource group in a managed state on a cluster node.

```
# clresourcegroup online -eM ora-db-rg
```

- 9 Register the ASM resource types for the data service.

```
# clresourcetype register SUNW.scalable_asm_instance_proxy
# clresourcetype register SUNW.asm_diskgroup
```

- 10 Create resource groups `asm-inst-rg` and `asm-dg-rg`.

```
# clresourcegroup create -S asm-inst-rg asm-dg-rg
```

- 11 Set a strong positive affinity on `rac-fmwk-rg` by `asm-inst-rg`.

```
# clresourcegroup set -p rg_affinities=++rac-fmwk-rg asm-inst-rg
```

- 12 Set a strong positive affinity on `asm-inst-rg` by `asm-dg-rg`.

```
# clresourcegroup set -p rg_affinities=++asm-inst-rg asm-dg-rg
```

- 13 Add a resource of type `SUNW.crs_framework` to the `rac-fmwk-rg` resource group.

```
# clresource create -g rac-fmwk-rg -t SUNW.crs_framework \
-p resource_dependencies=rac-fmwk-rs \
-d crs-fmwk-rs
```

- 14 Add a resource of type `SUNW.scalable_asm_instance_proxy` to the `asm-inst-rg` resource group.

```
# clresource create -g asm-inst-rg -t SUNW.asm_instance_proxy \
-p ORACLE_HOME=oracle-home \
-p crs_home=crs-home \
-p "oracle_sid{node1}"=instance \
-p "oracle_sid{node2}"=instance \
-p resource_dependencies_offline_restart=crs-fmwk-rs,qfs-mp-rs \
-d asm-inst-rs
```

```
-g asm-inst-rg
```

Specifies the name of the resource group into which the resources are to be placed.

- t SUNW.asm_inst_proxy
Specifies the type of the resource to add.
- p ORACLE_SID=*instance*
Sets the Oracle system identifier.
- p ORACLE_HOME=*Oracle-home*
Sets the path to the Oracle home directory.
- d *asm-inst-rs*
Specifies the name of the resource that you are creating.

15 Add a resource of type SUNW.asm_diskgroup to the *asm-dg-rg* resource group.

- ```
clresource create -g asm-dg-rg -t SUNW.asm_diskgroup \
-p asm_diskgroups=dg \
-p resource_dependencies_offline_restart=asm-inst-rs,qfs-mp-rs \
-d asm-dg-rs
```
- g *asm-dg-rg*  
Specifies the name of the resource group into which the resources are to be placed.
  - t SUNW.asm\_diskgroup  
Specifies the type of the resource to add.
  - p *asm\_diskgroups=dg*  
Specifies the ASM disk group.
  - d *asm-dg-rs*  
Specifies the name of the resource that you are creating.

**16 Bring online the *asm-inst-rg* resource group in a managed state on a cluster node.**

```
clresourcegroup online -eM asm-inst-rg
```

**17 Bring online the *asm-dg-rg* resource group in a managed state on a cluster node.**

```
clresourcegroup online -eM asm-dg-rg
```

**18 Verify the Oracle ASM installation by issuing the status command.**

```
clresource status +
```

**19 Register the resource types for the Sun Cluster HA for Oracle data service.**

For Sun Cluster HA for Oracle, you register two resource types, SUNW.oracle\_server and SUNW.oracle\_listener, as follows.

```
clresourcetype register SUNW.oracle_server
clresourcetype register SUNW.oracle_listener
```

**20 Add a logical hostname resource to the failover resource group for Oracle database.**

```
clreslogicalhostname create -g ora-db-rg [-h logicalhostname] \
logicalhostname-rs
```

*logicalhostname* Specifies a logical hostname. This logical hostname must present in your name service database. If *logicalhostname* and *logicalhostname-rs* are identical, *logicalhostname* is optional.

*logicalhostname-rs* Specifies the name that you are assigning to the logical hostname resource that you are creating.

**21 Bring online the failover resource group in a managed state on a cluster node.**

```
clresourcegroup online -eM ora-db-rg
```

**22 Create Oracle application resources in the failover resource group.**

- Oracle server resource:

```
clresource create -g ora-db-rg \
-t SUNW.oracle_server \
-p Connect_string=user/passwd \
-p ORACLE_SID=instance \
-p ORACLE_HOME=Oracle-home \
-p Alert_log_file=path-to-log \
-p Resource_dependencies_offline_restart=asm-dg-rs \
-d ora-db-rs
```

- Oracle listener resource:

```
clresource create -g ora-db-rg \
-t SUNW.oracle_listener \
-p ORACLE_HOME=Oracle-home \
-p listener_name=listener \
-p resource_dependencies_offline_restart=asm-dg-rs,logicalhostname-rs \
-d ora-ls-rs
```

```
-g ora-db-rg
```

Specifies the name of the resource group into which the resources are to be placed.

```
-t SUNW.oracle_server/listener
```

Specifies the type of the resource to add.

```
-p Alert_log_file=path-to-log
```

Sets the path under \$ORACLE\_HOME for the server message log.

```
-p Connect_string=user/passwd
```

Specifies the user and password that the fault monitor uses to connect to the database. These settings must agree with the permissions that you set up in [“How to Set Up Oracle Database Permissions” on page 28](#). If you use Solaris authorization, type a slash (/) instead of the user name and password.

- p ORACLE\_SID=*instance*  
Sets the Oracle system identifier.
- p ORACLE\_HOME=*Oracle-home*  
Sets the path to the Oracle home directory.
- p listener\_name=*listener*  
Sets the name of the Oracle listener instance. This name must match the corresponding entry in `listener.ora`.
- d *ora-ls-rs*  
Specifies the name of the resource that you are creating.

---

**Note** – Optionally, you can set additional extension properties that belong to the Oracle data service to override their default values. See [“Setting Sun Cluster HA for Oracle Extension Properties” on page 34](#) for a list of extension properties.

---

**23 Bring online the Oracle server resource.**

```
clresource enable ora-db-rs
```

**24 Bring online the Oracle listener resource.**

```
clresource enable ora-ls-rs
```



---

**More Information** Cluster File System

---

**Note** – You can also install Oracle\_Home for ASM on a cluster file system. If you are using a cluster file system, you should create the resources SUNW.HASStoragePlus and SUNW.scalable\_asm\_instance and set the appropriate dependencies between these two resources.

Sample commands to create the SUNW.HASStoragePlus resource and SUNW.scalable\_asm\_instance resource is given as follows:

```
clresource create -g asm-inst-rg -t SUNW.HASStoragePlus \
-p FilesystemMountPoints=cluster-file-system \
hastp-rs

clresource create -g asm-inst-rg -t SUNW.scalable_asm_instance \
-p ORACLE_HOME=oracle-home \
-p "oracle_sid{node1}"=instance \
-p "oracle_sid{node2}"=instance \
-p resource_dependencies_restart=hastp-rs \
-p resource_dependencies_offline_restart=crs-fmwk-rs \
asm-inst-rs
```

---

## Where to Go From Here

Go to [“Verifying the Sun Cluster HA for Oracle Installation”](#) on page 57 after you register and configure Sun Cluster HA for Oracle.

## Verifying the Sun Cluster HA for Oracle Installation

Perform the following verification tests to make sure that you have correctly installed Sun Cluster HA for Oracle.

These sanity checks ensure that all the nodes or zones that run Sun Cluster HA for Oracle can start the Oracle instance and that the other nodes or zones in the configuration can access the Oracle instance. Perform these sanity checks to isolate any problems in starting the Oracle software from Sun Cluster HA for Oracle.

## ▼ How to Verify the Sun Cluster HA for Oracle Installation

**1 Log in as `oracle` to the node or zone that currently masters the Oracle resource group.**

**2 Set the environment variables `ORACLE_SID` and `ORACLE_HOME`.**

**3 Confirm that you can start the Oracle instance from this node or zone.**

**4 Confirm that you can connect to the Oracle instance.**

Use the `sqlplus` command with the `user/password` variable that is defined in the `connect_string` property.

```
sqlplus user/password@tns_service
```

**5 Shut down the Oracle instance.**

The Sun Cluster software restarts the Oracle instance because the Oracle instance is under Sun Cluster control.

**6 Switch the resource group that contains the Oracle database resource to another cluster member.**

```
clresourcegroup switch -n node-zone-list resource-group
```

`-n node-zone-list` Specifies a comma-separated, ordered list of zones that can master this resource group. The format of each entry in the list is `node:zone`. In this format, `node` specifies the name or ID of a node and `zone` specifies the name of a non-global Solaris zone. To specify the global zone, or to specify a node without non-global zones, specify only `node`.

The order in this list determines the order in which the nodes or zones are considered primary during failover. This list is optional. If you omit this list, the global zone of each cluster node can master the resource group.

`resource-group` Specifies the name of the resource group that you are switching.

**7 Log in as `oracle` to the node or zone that now contains the resource group.**

**8 Repeat [Step 3](#) and [Step 4](#) to confirm interactions with the Oracle instance.**

## Oracle Clients

Clients must always refer to the database by using the network resource, not the physical hostname. The network resource is an IP address that can move between physical nodes during failover. The physical hostname is a machine name.

For example, in the `tnsnames.ora` file, you must specify the network resource as the host on which the database instance is running. The network resource is a logical hostname or a shared address. See “[How to Set Up Oracle Database Permissions](#)” on page 28.

---

**Note** – Oracle client-server connections cannot survive a Sun Cluster HA for Oracle switchover. The client application must be prepared to handle disconnection and reconnection or recovery as appropriate. A transaction monitor might simplify the application. Further, Sun Cluster HA for Oracle node recovery time is application dependent.

---

## Location of Sun Cluster HA for Oracle Log Files

Each instance of the Sun Cluster HA for Oracle data service maintains log files in subdirectories of the `/var/opt/SUNWscor` directory.

- The `/var/opt/SUNWscor/oracle_server` directory contains log files for the Oracle server.
- The `/var/opt/SUNWscor/oracle_listener` directory contains log files for the Oracle listener.

These files contain information about actions that the Sun Cluster HA for Oracle data service performs. Refer to these files to obtain diagnostic information for troubleshooting your configuration or to monitor the behavior of the Sun Cluster HA for Oracle data service.

## Tuning the Sun Cluster HA for Oracle Fault Monitors

Fault monitoring for the Sun Cluster HA for Oracle data service is provided by the following fault monitors:

- The Oracle server fault monitor
- The Oracle listener fault monitor

Each fault monitor is contained in a resource whose resource type is shown in the following table.

TABLE 4 Resource Types for Sun Cluster HA for Oracle Fault Monitors

| Fault Monitor   | Resource Type        |
|-----------------|----------------------|
| Oracle server   | SUNW.oracle_server   |
| Oracle listener | SUNW.oracle_listener |

System properties and extension properties of these resources control the behavior of the fault monitors. The default values of these properties determine the preset behavior of the fault monitors. The preset behavior should be suitable for most Sun Cluster installations. Therefore, you should tune the Sun Cluster HA for Oracle fault monitors *only* if you need to modify this preset behavior.

Tuning the Sun Cluster HA for Oracle fault monitors involves the following tasks:

- Setting the interval between fault monitor probes
- Setting the timeout for fault monitor probes
- Defining the criteria for persistent faults
- Specifying the failover behavior of a resource

For more information, see “[Tuning Fault Monitors for Sun Cluster Data Services](#)” in *Sun Cluster Data Services Planning and Administration Guide for Solaris OS*. Information about the Sun Cluster HA for Oracle fault monitors that you need to perform these tasks is provided in the subsections that follow.

Tune the Sun Cluster HA for Oracle fault monitors when you register and configure Sun Cluster HA for Oracle. For more information, see “[Registering and Configuring Sun Cluster HA for Oracle](#)” on page 34.

## Operation of the Oracle Server Fault Monitor

The fault monitor for the Oracle server uses a request to the server to query the health of the server.

The server fault monitor is started through `pmfadm` to make the monitor highly available. If the monitor is killed for any reason, the Process Monitor Facility (PMF) automatically restarts the monitor.

The server fault monitor consists of the following processes.

- A main fault monitor process
- A database client fault probe

This section contains the following information about the server fault monitor:

- “[Operation of the Main Fault Monitor](#)” on page 61

- “Operation of the Database Client Fault Probe” on page 61
- “Actions by the Server Fault Monitor in Response to a Database Transaction Failure” on page 62
- “Scanning of Logged Alerts by the Server Fault Monitor” on page 62

## Operation of the Main Fault Monitor

The main fault monitor determines that an operation is successful if the database is online and no errors are returned during the transaction.

## Operation of the Database Client Fault Probe

The database client fault probe performs the following operations:

1. Monitoring the partition for archived redo logs. See “Operations to Monitor the Partition for Archived Redo Logs” on page 61.
2. If the partition is healthy, determining whether the database is operational. See “Operations to Determine Whether the Database is Operational” on page 61.

The probe uses the timeout value that is set in the resource property `Probe_timeout` to determine how much time to allocate to successfully probe Oracle.

## Operations to Monitor the Partition for Archived Redo Logs

The database client fault probe queries the dynamic performance view `v$aarchive_dest` to determine all possible destinations for archived redo logs. For every active destination, the probe determines whether the destination is healthy and has sufficient free space for storing archived redo logs.

- If the destination is healthy, the probe determines the amount of free space in the destination's file system. If the amount of free space is less than 10% of the file system's capacity and is less than 20 Mbytes, the probe prints a message to `syslog`.
- If the destination is in `ERROR` status, the probe prints a message to `syslog` and disables operations to determine whether the database is operational. The operations remain disabled until the error condition is cleared.

## Operations to Determine Whether the Database is Operational

If the partition for archived redo logs is healthy, the database client fault probe queries the dynamic performance view `v$sysstat` to obtain database performance statistics. Changes to these statistics indicate that the database is operational. If these statistics remain unchanged between consecutive queries, the fault probe performs database transactions to determine if the database is operational. These transactions involve the creation, updating, and dropping of a table in the user table space.

The database client fault probe performs all its transactions as the Oracle user. The ID of this user is specified during the preparation of the nodes or zones as explained in [“How to Prepare the Nodes”](#) on page 19.

## Actions by the Server Fault Monitor in Response to a Database Transaction Failure

If a database transaction fails, the server fault monitor performs an action that is determined by the error that caused the failure. To change the action that the server fault monitor performs, customize the server fault monitor as explained in [“Customizing the Sun Cluster HA for Oracle Server Fault Monitor”](#) on page 64.

If the action requires an external program to be run, the program is run as a separate process in the background.

Possible actions are as follows:

- **Ignore.** The server fault monitor ignores the error.
- **Stop monitoring.** The server fault monitor is stopped without shutting down the database.
- **Restart.** The server fault monitor stops and restarts the entity that is specified by the value of the `Restart_type` extension property:
  - If the `Restart_type` extension property is set to `RESOURCE_RESTART`, the server fault monitor restarts the database server resource. By default, the server fault monitor restarts the database server resource.
  - If the `Restart_type` extension property is set to `RESOURCE_GROUP_RESTART`, the server fault monitor restarts the database server resource group.

---

**Note** – The number of attempts to restart might exceed the value of the `Retry_count` resource property within the time that the `Retry_interval` resource property specifies. If this situation occurs, the server fault monitor attempts to switch over the resource group to another node or zone.

---

- **Switch over.** The server fault monitor switches over the database server resource group to another node or zone. If no nodes or zones are available, the attempt to switch over the resource group fails. If the attempt to switch over the resource group fails, the database server is restarted.

## Scanning of Logged Alerts by the Server Fault Monitor

The Oracle software logs alerts in an alert log file. The absolute path of this file is specified by the `alert_log_file` extension property of the `SUNW.oracle_server` resource. The server fault monitor scans the alert log file for new alerts at the following times:

- When the server fault monitor is started

- Each time that the server fault monitor queries the health of the server

If an action is defined for a logged alert that the server fault monitor detects, the server fault monitor performs the action in response to the alert.

Preset actions for logged alerts are listed in [Table 2](#). To change the action that the server fault monitor performs, customize the server fault monitor as explained in “[Customizing the Sun Cluster HA for Oracle Server Fault Monitor](#)” on page 64.

## Operation of the Oracle Listener Fault Monitor

The Oracle listener fault monitor checks the status of an Oracle listener.

If the listener is running, the Oracle listener fault monitor considers a probe successful. If the fault monitor detects an error, the listener is restarted.

---

**Note** – The listener resource does not provide a mechanism for setting the listener password. If Oracle listener security is enabled, a probe by the listener fault monitor might return Oracle error TNS-01169. Because the listener is able to respond, the listener fault monitor treats the probe as a success. This action does not cause a failure of the listener to remain undetected. A failure of the listener returns a different error, or causes the probe to time out.

---

The listener probe is started through `pmfadm` to make the probe highly available. If the probe is killed, PMF automatically restarts the probe.

If a problem occurs with the listener during a probe, the probe tries to restart the listener. The value that is set for the resource property `retry_count` determines the maximum number of times that the probe attempts the restart. If, after trying for the maximum number of times, the probe is still unsuccessful, the probe stops the fault monitor and does not switch over the resource group.

## Obtaining Core Files for Troubleshooting DBMS Timeouts

To facilitate troubleshooting of unexplained DBMS timeouts, you can enable the fault monitor to create a core file when a probe timeout occurs. The contents of the core file relate to the fault monitor process. The fault monitor creates the core file in the `/` directory. To enable the fault monitor to create a core file, use the `coreadm` command to enable set-id core dumps. For more information, see the `coreadm(1M)` man page.

# Customizing the Sun Cluster HA for Oracle Server Fault Monitor

Customizing the Sun Cluster HA for Oracle server fault monitor enables you to modify the behavior of the server fault monitor as follows:

- Overriding the preset action for an error
- Specifying an action for an error for which no action is preset



---

**Caution** – Before you customize the Sun Cluster HA for Oracle server fault monitor, consider the effects of your customizations, especially if you change an action from restart or switch over to ignore or stop monitoring. If errors remain uncorrected for long periods, the errors might cause problems with the database. If you encounter problems with the database after customizing the Sun Cluster HA for Oracle server fault monitor, revert to using the preset actions. Reverting to the preset actions enables you to determine if the problem is caused by your customizations.

---

Customizing the Sun Cluster HA for Oracle server fault monitor involves the following activities:

1. [Defining custom behavior for errors](#)
2. [Propagating a custom action file to all nodes or zones in a cluster](#)
3. [Specifying the custom action file that a server fault monitor should use](#)

## Defining Custom Behavior for Errors

The Sun Cluster HA for Oracle server fault monitor detects the following types of errors:

- DBMS errors that occur during a probe of the database by the server fault monitor
- Alerts that Oracle logs in the alert log file
- Timeouts that result from a failure to receive a response within the time that is set by the `Probe_timeout` extension property

To define custom behavior for these types of errors, create a custom action file. This section contains the following information about custom action files:

- [“Custom Action File Format” on page 65](#)
- [“Changing the Response to a DBMS Error” on page 67](#)
- [“Changing the Response to Logged Alerts” on page 69](#)
- [“Changing the Maximum Number of Consecutive Timed-Out Probes” on page 70](#)



## Custom Action File Format

A custom action file is a plain text file. The file contains one or more entries that define the custom behavior of the Sun Cluster HA for Oracle server fault monitor. Each entry defines the custom behavior for a single DBMS error, a single timeout error, or several logged alerts. A maximum of 1024 entries is allowed in a custom action file.

---

**Note** – Each entry in a custom action file overrides the preset action for an error, or specifies an action for an error for which no action is preset. Create entries in a custom action file *only* for the preset actions that you are overriding or for errors for which no action is preset. Do *not* create entries for actions that you are not changing.

---

An entry in a custom action file consists of a sequence of keyword-value pairs that are separated by semicolons. Each entry is enclosed in braces.

The format of an entry in a custom action file is as follows:

```
{
[ERROR_TYPE=DBMS_ERROR|SCAN_LOG|TIMEOUT_ERROR;]
ERROR=error-spec;
[ACTION=SWITCH|RESTART|STOP|NONE;]
[CONNECTION_STATE=co|di|on|*;]
[NEW_STATE=co|di|on|*;]
[MESSAGE="message-string"]
}
```

White space may be used between separated keyword-value pairs and between entries to format the file.

The meaning and permitted values of the keywords in a custom action file are as follows:

### ERROR\_TYPE

Indicates the type of the error that the server fault monitor has detected. The following values are permitted for this keyword:

|               |                                                                            |
|---------------|----------------------------------------------------------------------------|
| DBMS_ERROR    | Specifies that the error is a DBMS error.                                  |
| SCAN_LOG      | Specifies that the error is an alert that is logged in the alert log file. |
| TIMEOUT_ERROR | Specifies that the error is a timeout.                                     |

The ERROR\_TYPE keyword is optional. If you omit this keyword, the error is assumed to be a DBMS error.

### ERROR

Identifies the error. The data type and the meaning of *error-spec* are determined by the value of the ERROR\_TYPE keyword as shown in the following table.

| ERROR_TYPE    | Data Type                 | Meaning                                                                                                 |
|---------------|---------------------------|---------------------------------------------------------------------------------------------------------|
| DBMS_ERROR    | Integer                   | The error number of a DBMS error that is generated by Oracle                                            |
| SCAN_LOG      | Quoted regular expression | A string in an error message that Oracle has logged to the Oracle alert log file                        |
| TIMEOUT_ERROR | Integer                   | The number of consecutive timed-out probes since the server fault monitor was last started or restarted |

You must specify the **ERROR** keyword. If you omit this keyword, the entry in the custom action file is ignored.

#### ACTION

Specifies the action that the server fault monitor is to perform in response to the error. The following values are permitted for this keyword:

- NONE** Specifies that the server fault monitor ignores the error.
- STOP** Specifies that the server fault monitor is stopped.
- RESTART** Specifies that the server fault monitor stops and restarts the entity that is specified by the value of the `Restart_type` extension property of the `SUNW.oracle_server` resource.
- SWITCH** Specifies that the server fault monitor switches over the database server resource group to another node or zone.

The **ACTION** keyword is optional. If you omit this keyword, the server fault monitor ignores the error.

#### CONNECTION\_STATE

Specifies the required state of the connection between the database and the server fault monitor when the error is detected. The entry applies only if the connection is in the required state when the error is detected. The following values are permitted for this keyword:

- \*** Specifies that the entry always applies, regardless of the state of the connection.
- co** Specifies that the entry applies only if the server fault monitor is attempting to connect to the database.
- on** Specifies that the entry applies only if the server fault monitor is online. The server fault monitor is online if it is connected to the database.
- di** Specifies that the entry applies only if the server fault monitor is disconnecting from the database.

The **CONNECTION\_STATE** keyword is optional. If you omit this keyword, the entry always applies, regardless of the state of the connection.

**NEW\_STATE**

Specifies the state of the connection between the database and the server fault monitor that the server fault monitor must attain after the error is detected. The following values are permitted for this keyword:

- \* Specifies that the state of the connection must remain unchanged.
- co Specifies that the server fault monitor must disconnect from the database and reconnect immediately to the database.
- di Specifies that the server fault monitor must disconnect from the database. The server fault monitor reconnects when it next probes the database.

The **NEW\_STATE** keyword is optional. If you omit this keyword, the state of the database connection remains unchanged after the error is detected.

**MESSAGE**

Specifies an additional message that is printed to the resource's log file when this error is detected. The message must be enclosed in double quotes. This message is additional to the standard message that is defined for the error.

The **MESSAGE** keyword is optional. If you omit this keyword, no additional message is printed to the resource's log file when this error is detected.

## Changing the Response to a DBMS Error

The action that the server fault monitor performs in response to each DBMS error is preset as listed in [Table 1](#). To determine whether you need to change the response to a DBMS error, consider the effect of DBMS errors on your database to determine if the preset actions are appropriate. For examples, see the subsections that follow:

- “[Responding to an Error Whose Effects Are Major](#)” on page 67
- “[Ignoring an Error Whose Effects Are Minor](#)” on page 68

To change the response to a DBMS error, create an entry in a custom action file in which the keywords are set as follows:

- **ERROR\_TYPE** is set to **DBMS\_ERROR**.
- **ERROR** is set to the error number of the DBMS error.
- **ACTION** is set to the action that you require.

### Responding to an Error Whose Effects Are Major

If an error that the server fault monitor ignores affects more than one session, action by the server fault monitor might be required to prevent a loss of service.

For example, no action is preset for Oracle error 4031: unable to allocate *num-bytes* bytes of shared memory. However, this Oracle error indicates that the shared global area (SGA) has

insufficient memory, is badly fragmented, or both states apply. If this error affects only a single session, ignoring the error might be appropriate. However, if this error affects more than one session, consider specifying that the server fault monitor restart the database.

The following example shows an entry in a custom action file for changing the response to a DBMS error to restart.

**EXAMPLE 4** Changing the Response to a DBMS Error to Restart

```
{
ERROR_TYPE=DBMS_ERROR;
ERROR=4031;
ACTION=restart;
CONNECTION_STATE=*;
NEW_STATE=*;
MESSAGE="Insufficient memory in shared pool.";
}
```

This example shows an entry in a custom action file that overrides the preset action for DBMS error 4031. This entry specifies the following behavior:

- In response to DBMS error 4031, the action that the server fault monitor performs is restart.
- This entry applies regardless of the state of the connection between the database and the server fault monitor when the error is detected.
- The state of the connection between the database and the server fault monitor must remain unchanged after the error is detected.
- The following message is printed to the resource's log file when this error is detected:

```
Insufficient memory in shared pool.
```

## Ignoring an Error Whose Effects Are Minor

If the effects of an error to which the server fault monitor responds are minor, ignoring the error might be less disruptive than responding to the error.

For example, the preset action for Oracle error 4030: out of process memory when trying to allocate *num-bytes* bytes is restart. This Oracle error indicates that the server fault monitor could not allocate private heap memory. One possible cause of this error is that insufficient memory is available to the operating system. If this error affects more than one session, restarting the database might be appropriate. However, this error might not affect other sessions because these sessions do not require further private memory. In this situation, consider specifying that the server fault monitor ignore the error.

The following example shows an entry in a custom action file for ignoring a DBMS error.

**EXAMPLE 5** Ignoring a DBMS Error

```

{
ERROR_TYPE=DBMS_ERROR;
ERROR=4030;
ACTION=none;
CONNECTION_STATE=*;
NEW_STATE=*;
MESSAGE="";
}

```

This example shows an entry in a custom action file that overrides the preset action for DBMS error 4030. This entry specifies the following behavior:

- The server fault monitor ignores DBMS error 4030.
- This entry applies regardless of the state of the connection between the database and the server fault monitor when the error is detected.
- The state of the connection between the database and the server fault monitor must remain unchanged after the error is detected.
- No additional message is printed to the resource's log file when this error is detected.

## Changing the Response to Logged Alerts

The Oracle software logs alerts in a file that is identified by the `alert_log_file` extension property. The server fault monitor scans this file and performs actions in response to alerts for which an action is defined.

Logged alerts for which an action is preset are listed in [Table 2](#). Change the response to logged alerts to change the preset action, or to define new alerts to which the server fault monitor responds.

To change the response to logged alerts, create an entry in a custom action file in which the keywords are set as follows:

- `ERROR_TYPE` is set to `SCAN_LOG`.
- `ERROR` is set to a quoted regular expression that identifies a string in an error message that Oracle has logged to the Oracle alert log file.
- `ACTION` is set to the action that you require.

The server fault monitor processes the entries in a custom action file in the order in which the entries occur. Only the first entry that matches a logged alert is processed. Later entries that match are ignored. If you are using regular expressions to specify actions for several logged alerts, ensure that more specific entries occur before more general entries. Specific entries that occur after general entries might be ignored.

For example, a custom action file might define different actions for errors that are identified by the regular expressions `ORA-65` and `ORA-6`. To ensure that the entry that contains the regular expression `ORA-65` is not ignored, ensure that this entry occurs before the entry that contains the regular expression `ORA-6`.

The following example shows an entry in a custom action file for changing the response to a logged alert.

**EXAMPLE 6** Changing the Response to a Logged Alert

```
{
ERROR_TYPE=SCAN_LOG;
ERROR="ORA-00600: internal error";
ACTION=RESTART;
}
```

This example shows an entry in a custom action file that overrides the preset action for logged alerts about internal errors. This entry specifies the following behavior:

- In response to logged alerts that contain the text `ORA-00600: internal error`, the action that the server fault monitor performs is restart.
- This entry applies regardless of the state of the connection between the database and the server fault monitor when the error is detected.
- The state of the connection between the database and the server fault monitor must remain unchanged after the error is detected.
- No additional message is printed to the resource's log file when this error is detected.

## Changing the Maximum Number of Consecutive Timed-Out Probes

By default, the server fault monitor restarts the database after the second consecutive timed-out probe. If the database is lightly loaded, two consecutive timed-out probes should be sufficient to indicate that the database is hanging. However, during periods of heavy load, a server fault monitor probe might time out even if the database is functioning correctly. To prevent the server fault monitor from restarting the database unnecessarily, increase the maximum number of consecutive timed-out probes.



**Caution** – Increasing the maximum number of consecutive timed-out probes increases the time that is required to detect that the database is hanging.

---

To change the maximum number of consecutive timed-out probes allowed, create one entry in a custom action file for each consecutive timed-out probe that is allowed *except* the first timed-out probe.

---

**Note** – You are not required to create an entry for the first timed-out probe. The action that the server fault monitor performs in response to the first timed-out probe is preset.

---

For the last allowed timed-out probe, create an entry in which the keywords are set as follows:

- `ERROR_TYPE` is set to `TIMEOUT_ERROR`.
- `ERROR` is set to the maximum number of consecutive timed-out probes that are allowed.
- `ACTION` is set to `RESTART`.

For each remaining consecutive timed-out probe except the first timed-out probe, create an entry in which the keywords are set as follows:

- `ERROR_TYPE` is set to `TIMEOUT_ERROR`.
- `ERROR` is set to the sequence number of the timed-out probe. For example, for the second consecutive timed-out probe, set this keyword to 2. For the third consecutive timed-out probe, set this keyword to 3.
- `ACTION` is set to `NONE`.

---

**Tip** – To facilitate debugging, specify a message that indicates the sequence number of the timed-out probe.

---

The following example shows the entries in a custom action file for increasing the maximum number of consecutive timed-out probes to five.

**EXAMPLE 7** Changing the Maximum Number of Consecutive Timed-Out Probes

```
{
ERROR_TYPE=TIMEOUT;
ERROR=2;
ACTION=NONE;
CONNECTION_STATE=*;
NEW_STATE=*;
MESSAGE="Timeout #2 has occurred.";
}

{
ERROR_TYPE=TIMEOUT;
ERROR=3;
ACTION=NONE;
CONNECTION_STATE=*;
NEW_STATE=*;
MESSAGE="Timeout #3 has occurred.";
}
```

**EXAMPLE 7** Changing the Maximum Number of Consecutive Timed-Out Probes (Continued)

```
{
ERROR_TYPE=TIMEOUT;
ERROR=4;
ACTION=NONE;
CONNECTION_STATE=*;
NEW_STATE=*;
MESSAGE="Timeout #4 has occurred.";
}

{
ERROR_TYPE=TIMEOUT;
ERROR=5;
ACTION=RESTART;
CONNECTION_STATE=*;
NEW_STATE=*;
MESSAGE="Timeout #5 has occurred. Restarting.";
}
```

This example shows the entries in a custom action file for increasing the maximum number of consecutive timed-out probes to five. These entries specify the following behavior:

- The server fault monitor ignores the second consecutive timed-out probe through the fourth consecutive timed-out probe.
- In response to the fifth consecutive timed-out probe, the action that the server fault monitor performs is restart.
- The entries apply regardless of the state of the connection between the database and the server fault monitor when the timeout occurs.
- The state of the connection between the database and the server fault monitor must remain unchanged after the timeout occurs.
- When the second consecutive timed-out probe through the fourth consecutive timed-out probe occurs, a message of the following form is printed to the resource's log file:  
`Timeout #number has occurred.`
- When the fifth consecutive timed-out probe occurs, the following message is printed to the resource's log file:  
`Timeout #5 has occurred. Restarting.`



## Propagating a Custom Action File to All Nodes in a Cluster

A server fault monitor must behave consistently on all cluster nodes or zones. Therefore, the custom action file that the server fault monitor uses must be identical on all cluster nodes or zones. After creating or modifying a custom action file, ensure that this file is identical on all cluster nodes or zones by propagating the file to all cluster nodes or zones. To propagate the file to all cluster nodes or zones, use the method that is most appropriate for your cluster configuration:

- Locating the file on a file system that all nodes or zones share
- Locating the file on a highly available local file system
- Copying the file to the local file system of each cluster node or zone by using operating system commands such as the `rcp(1)` command or the `rdist(1)` command

## Specifying the Custom Action File That a Server Fault Monitor Should Use

To apply customized actions to a server fault monitor, you must specify the custom action file that the fault monitor should use. Customized actions are applied to a server fault monitor when the server fault monitor reads a custom action file. A server fault monitor reads a custom action file when the you specify the file.

Specifying a custom action file also validates the file. If the file contains syntax errors, an error message is displayed. Therefore, after modifying a custom action file, specify the file again to validate the file.




---

**Caution** – If syntax errors in a modified custom action file are detected, correct the errors before the fault monitor is restarted. If the syntax errors remain uncorrected when the fault monitor is restarted, the fault monitor reads the erroneous file, ignoring entries that occur after the first syntax error.

---

### ▼ How to Specify the Custom Action File That a Server Fault Monitor Should Use

- 1 **On a cluster node, become superuser or assume a role that provides `solaris.cluster.modify` RBAC authorization.**
- 2 **Set the `Custom_action_file` extension property of the `SUNW.oracle_server` resource.**

Set this property to the absolute path of the custom action file.

```
clresource set -p custom_action_file=filepath server-resource
```

-p custom\_action\_file=*filepath*  
Specifies the absolute path of the custom action file.

*server-resource*  
Specifies the SUNW.oracle\_server resource.

## Upgrading Sun Cluster HA for Oracle Resource Types

The existing resource types for the Sun Cluster HA for Oracle data service are as follows:

- SUNW.oracle\_listener, which represents an Oracle listener
- SUNW.oracle\_server, which represents an Oracle server

In addition to the existing resource types, there are three additional resource types included in Sun Cluster HA for Oracle data service for ASM. These resource types are as follows:

- SUNW.asm\_diskgroup, which represents the single or clustered instance ASM disk group in a Sun Cluster configuration. For more information about the resource type, see [asm\\_diskgroup\(5\)](#)
- SUNW.scalable\_asm\_instance, which represents the single instance ASM in a Sun Cluster configuration. For more information about the resource type, see [SUNW.scalable\\_asm\\_instance\(5\)](#).
- SUNW.scalable\_asm\_instance\_proxy, which represents a proxy for the clustered ASM instance in a Sun Cluster configuration. For more information about the resource type, see [SUNW.scalable\\_asm\\_instance\\_proxy\(5\)](#).

Upgrade the existing resource types if you are upgrading from an earlier version of Sun Cluster HA for Oracle.

For general instructions that explain how to upgrade a resource type, see “[Upgrading a Resource Type](#)” in *Sun Cluster Data Services Planning and Administration Guide for Solaris OS*.

## Upgrading the SUNW.oracle\_listener Resource Type

The information that you require to complete the upgrade of the SUNW.oracle\_listener resource type is provided in the subsections that follow.

### Information for Registering the New Resource Type Version

The relationship between the version of the SUNW.oracle\_listener resource type and the release of Sun Cluster data services is shown in the following table. The release of Sun Cluster data services indicates the release in which the version of the resource type was introduced. The table also summarizes the changes that were introduced in each new version.

| SUNW.oracle_listener<br>Resource Type Version | Sun Cluster Data Services<br>Release | Summary of Changes                                                             |
|-----------------------------------------------|--------------------------------------|--------------------------------------------------------------------------------|
| 1                                             | 1.0                                  | Not applicable                                                                 |
| 3.1                                           | 3.1 5/03                             | Directives to enable upgrades of this resource type introduced                 |
| 4                                             | 3.1 4/04                             | Probe_timeout extension property introduced                                    |
| 5                                             | 3.1 8/05                             | Default value of the Probe_timeout extension property increased to 180 seconds |

To determine the version of the resource type that is registered, use one command from the following list:

- `clresourcetype list`
- `clresourcetype show`

The resource type registration (RTR) file for this resource type is `/opt/SUNWscor/oracle_listener/etc/SUNW.oracle_listener`.

## Information for Migrating Existing Instances of the Resource Type

The information that you require to edit each instance of the `SUNW.oracle_listener` resource type is as follows:

- You can perform the migration at any time.
- If you need to use the features of the `SUNW.oracle_listener` resource type that were introduced in version 3.1 4/04, the required value of the `Type_version` property is 4.
- If you need to use the features of the `SUNW.oracle_listener` resource type that were introduced in version 3.1 8/05, the required value of the `Type_version` property is 5.
- If you need to specify the timeout value in seconds that the fault monitor uses to probe an Oracle listener, set the `Probe_timeout` extension property. For more information, see [“SUNW.oracle\\_listener Extension Properties” on page 85](#).

---

**Note** – If you are using version 4 of the `SUNW.oracle_listener` resource type, upgrade to version 4 *only* if you require the new default values. If the default values in version 4 are satisfactory, you do not need to upgrade.

---

The following example shows a command for editing an instance of the `SUNW.oracle_listener` resource type.

**EXAMPLE 8** Editing an Instance of the `SUNW.oracle_listener` Resource Type

```
clresource set -p Type_version=4 \
-p probe_timeout=60 oracle-lrs
```

This command edits a `SUNW.oracle_listener` resource as follows:

- The `SUNW.oracle_listener` resource is named `oracle-lrs`.
- The `Type_version` property of this resource is set to 4.
- The timeout value in seconds that the fault monitor uses to probe an Oracle listener is set to 60 seconds.

## Upgrading the `SUNW.oracle_server` Resource Type

The information that you require to complete the upgrade of the `SUNW.oracle_server` resource type is provided in the subsections that follow.

### Information for Registering the New Resource Type Version

The relationship between the version of the `SUNW.oracle_server` resource type and the release of Sun Cluster data services is shown in the following table. The release of Sun Cluster data services indicates the release in which the version of the resource type was introduced. The table also summarizes the changes that were introduced in each new version.

| <code>SUNW.oracle_server</code><br>Resource Type Version | Sun Cluster Data<br>Services Release | Summary of Changes                                                                                                                                                                                                                                                                |
|----------------------------------------------------------|--------------------------------------|-----------------------------------------------------------------------------------------------------------------------------------------------------------------------------------------------------------------------------------------------------------------------------------|
| 1                                                        | 1.0                                  | Not applicable                                                                                                                                                                                                                                                                    |
| 1.1                                                      | 3.0 5/02<br>asynchronous<br>release  | Directives to enable upgrades of this resource type introduced<br><br>Auto_End_Bkp extension property introduced                                                                                                                                                                  |
| 3.1                                                      | 3.1 5/03                             | Restart_type extension property introduced                                                                                                                                                                                                                                        |
| 4                                                        | 3.1 10/03                            | Custom_action_file extension property introduced                                                                                                                                                                                                                                  |
| 5                                                        | 3.1 8/05                             | Default values of extension properties changed as follows: <ul style="list-style-type: none"> <li>▪ Default value of Probe_timeout extension property increased to 300 seconds</li> <li>▪ Default value of Restart_type extension property changed to RESOURCE_RESTART</li> </ul> |

| SUNW.oracle_server Resource Type Version | Sun Cluster Data Services Release | Summary of Changes                                                                                                                                                                                                                                                                                                                                                                                                           |
|------------------------------------------|-----------------------------------|------------------------------------------------------------------------------------------------------------------------------------------------------------------------------------------------------------------------------------------------------------------------------------------------------------------------------------------------------------------------------------------------------------------------------|
| 6                                        | 3.2                               | <p>Support for standby instances</p> <p>Dataguard_role extension property introduced. The possible values are as follows:</p> <ul style="list-style-type: none"> <li>■ NONE</li> <li>■ PRIMARY</li> <li>■ STANDBY</li> <li>■ IN_TRANSITION</li> </ul> <p>Standby_mode extension property introduced. The possible values are as follows:</p> <ul style="list-style-type: none"> <li>■ LOGICAL</li> <li>■ PHYSICAL</li> </ul> |

To determine the version of the resource type that is registered, use one command from the following list:

- `clresourcetype list`
- `clresourcetype show`

The resource type registration (RTR) file for this resource type is `/opt/SUNWscor/oracle_server/etc/SUNW.oracle_server`.

## Information for Migrating Existing Instances of the Resource Type

The information that you require to edit each instance of the `SUNW.oracle_server` resource type is as follows:

- You can perform the migration at any time.
- If you need to use the features of the `SUNW.oracle_server` resource type that were introduced in version 3.1 10/03, the required value of the `Type_version` property is 4.
- If you need to use the features of the `SUNW.oracle_server` resource type that were introduced in version 3.1 8/05, the required value of the `Type_version` property is 5.
- If you customized the behavior of the server fault monitor, set the `Custom_action_file` extension property. For more information, see [“Customizing the Sun Cluster HA for Oracle Server Fault Monitor” on page 64](#).

**Note** – If you are using version 4 of the `SUNW.oracle_server` resource type, upgrade to version 4 *only* if you require the new default values. If the default values in version 4 are satisfactory, you do not need to upgrade.

The following example shows a command for editing an instance of the `SUNW.oracle_server` resource type.

**EXAMPLE 9** Editing an Instance of the SUNW.oracle\_server Resource Type

```
clresource set -p Type_version=4 \
 -p custom_action_file=/opt/SUNWscor/oracle_server/etc/srv_mon_cust_actions \
oracle-srs
```

This command edits a SUNW.oracle\_server resource as follows:

- The SUNW.oracle\_server resource is named oracle-srs.
- The Type\_version property of this resource is set to 4.
- Custom behavior for the fault monitor of this resource is specified in the file /opt/SUNWscor/oracle\_server/etc/srv\_mon\_cust\_actions.

## Changing the Role of a DataGuard Instance

Database role failover or switchover is possible between an Oracle primary database and an Oracle standby database. When you use Oracle commands to change the role of DataGuard instances, the changes are not propagated to the Sun Cluster resources that represent these instances. Therefore, you must also use Sun Cluster commands to change extension properties of these resources to ensure that database instances are started in the correct role.

### ▼ How to Change the Role of a DataGuard Instance

#### 1 Prevent Sun Cluster from starting the instance in an incorrect role.

If a node or zone fails while you are changing the role of a DataGuard instance, Sun Cluster might restart the instance in an incorrect role. To prevent this possibility, change the Dataguard\_role extension property of the Oracle server resource that represents the instance to IN\_TRANSITION.

```
clresource set -p Dataguard_role=IN_TRANSITION server-rs
```

#### 2 Perform the required operations on the Oracle database to convert the database to a new role.

#### 3 Change the following extension properties of the Oracle server resource that represents the instance to reflect the new role of the instance:

- Dataguard\_role
- Standby\_mode

The required combination of `Dataguard_role` and `Standby_mode` depends on the change of role, as follows:

- **To change from a primary database to a physical standby database, run the following command:**  

```
clresource set -p Dataguard_role=STANDBY -p Standby_mode=PHYSICAL server-rs
```
- **To change from a primary database to a logical standby database, run the following command:**  

```
clresource set -p Dataguard_role=STANDBY \
-p Standby_mode=LOGICAL server-rs
```
- **To change from a standby database to a primary database, run the following command:**  

```
clresource set -p Dataguard_role=PRIMARY server-rs
```







# Sun Cluster HA for Oracle Extension Properties

---

The extension properties that you can set for each Sun Cluster HA for Oracle resource type are listed in the following sections:

- “[SUNW.oracle\\_server Extension Properties](#)” on page 81
- “[SUNW.oracle\\_listener Extension Properties](#)” on page 85

See the [r\\_properties\(5\)](#) man page and the [rg\\_properties\(5\)](#) man page for details about all of the system-defined properties.

## SUNW.oracle\_server **Extension Properties**

**Alert\_log\_file** (string)

Specifies the absolute path of the Oracle alert log file. The Oracle software logs alerts in this file. The Oracle server fault monitor scans the alert log file for new alerts at the following times:

- When the server fault monitor is started
- Each time that the server fault monitor queries the health of the server

If an action is defined for a logged alert that the server fault monitor detects, the server fault monitor performs the action in response to the alert.

Preset actions for logged alerts are listed in [Preset Actions for DBMS Errors and Logged Alerts](#). To change the action that the server fault monitor performs, customize the server fault monitor as explained in “[Customizing the Sun Cluster HA for Oracle Server Fault Monitor](#)” on page 64.

**Default:** None

**Range:** Minimum = 1

**Tunable:** Any time

**Auto\_End\_Bkp** (Boolean)

Specifies whether the following recovery actions are performed if an Oracle relational database management system (RDBMS) hot backup is interrupted.

- Recognizing when a database fails to open because of files that remain in hot backup mode. This verification process occurs when Sun Cluster HA for Oracle starts.
- Identifying and releasing all files that remain in hot backup mode.
- Opening the database for use.

The permitted values for this property are as follows:

- `False` – Specifies that the recovery actions are *not* performed. This value is the default.
- `True` – Specifies that the recovery actions are performed.

**Default:** `False`

**Range:** `None`

**Tunable:** Any time

**Connect\_cycle** (integer)

The number of probe cycles that the server fault monitor performs before disconnecting from the database.

**Default:** `5`

**Range:** `0 – 99,999`

**Tunable:** Any time

**Connect\_string** (string)

The Oracle database user ID and password that the server fault monitor uses to connect to the database.

Specify this property as follows:

*userid/password*

As part of the setup of Sun Cluster HA for Oracle, you must define the database user ID and password before enabling the server resource and its fault monitor. To use Solaris authentication, type a slash (/) instead of a user ID and password.

**Default:** `None`

**Range:** `Minimum = 1`

**Tunable:** Any time

**Custom\_action\_file** (string)

The absolute path of the file that defines the custom behavior of the Sun Cluster HA for Oracle server fault monitor.

**Default:** ""

**Range:** None

**Tunable:** Any time

**Introduced in release:** 3.1 10/03

Dataguard\_role (string)

The role of the database. The permitted values for this property are as follows:

|               |                                                                                                                |
|---------------|----------------------------------------------------------------------------------------------------------------|
| NONE          | Specifies that no standby database instances configured for the database instance                              |
| PRIMARY       | Specifies that the database is a primary database instance for which standby database instances are configured |
| STANDBY       | Specifies that the database role is standby                                                                    |
| IN_TRANSITION | Specifies that the database is undergoing a role reversal process                                              |

**Default:** NONE

**Range:** None

**Tunable:** Any time

Debug\_level (integer)

The level to which debug messages from the Oracle server component are logged. When the debug level is increased, more debug messages are written to the log files. These messages are logged to the file `/var/opt/SUNWscor/oracle_server/message_log.rs`, where *rs* is the name of the resource that represents the Oracle server component.

**Default:** 1, which logs sys log messages

**Range:** 0– 100

**Tunable:** Any time

ORACLE\_HOME (string)

The path to the Oracle home directory.

**Default:** None

**Range:** Minimum = 1

**Tunable:** When disabled

ORACLE\_SID (string)

The Oracle system identifier.

**Default:** None

**Range:** Minimum = 1

**Tunable:** When disabled

Parameter\_file (string)

The Oracle parameter file. If the Oracle parameter file is not specified, this property defaults to Oracle's default.

**Default:** ""

**Range:** Minimum = 0

**Tunable:** Any time

Probe\_timeout (integer)

The timeout value (in seconds) that the server fault monitor uses to probe an Oracle server instance.

**Default:** 300

**Range:** 0– 99,999

**Tunable:** Any time

Restart\_type (string)

Specifies the entity that the server fault monitor restarts when the response to a fault is restart. The permitted values for this property are as follows:

RESOURCE\_RESTART                      Specifies that only this resource is restarted

RESOURCE\_GROUP\_RESTART              Specifies that all resources in the resource group that contains this resource are restarted

**Default:** RESOURCE\_RESTART

**Range:** None

**Tunable:** Any time

Standby\_mode (string)

The mode of the standby database. The permitted values for this property are as follows:

LOGICAL                      Specifies a logical standby database

PHYSICAL                      Specifies a physical standby database

**Default:** LOGICAL

**Range:** None

**Tunable:** Any time

**User\_env** (string)

A file that contains environment variables to be set before server startup and shutdown. Those environment variables that have values that differ from Oracle defaults must be defined in this file.

For example, a user's `listener.ora` file might not reside under the `/var/opt/oracle` directory or the `$ORACLE_HOME/network/admin.` directory. In this situation, the `TNS_ADMIN` environment variable should be defined.

The definition of each environment variable that is defined must follow the format `VARIABLE_NAME=VARIABLE_VALUE`. Each of these environment variables must be specified, one per line in the environment file.

**Default:** NULL

**Range:** None

**Tunable:** Any time

**wait\_for\_online** (Boolean)

Wait in the `START` method until the database is online.

**Default:** True

**Range:** None

**Tunable:** Any time

## SUNW.oracle\_listener **Extension Properties**

**LISTENER\_NAME** (string)

The name of the Oracle listener. This name must match the corresponding entry in the `listener.ora` configuration file.

**Default:** LISTENER

**Range:** Not applicable

**Tunable:** When disabled

**ORACLE\_HOME** (string)

The path to the Oracle home directory.

**Default:** No default defined

**Range:** Not applicable

**Tunable:** When disabled

**Probe\_timeout** (integer)

The timeout value in seconds that the fault monitor uses to probe an Oracle listener.

**Default:** 180

**Range:** 1– 99,999

**Tunable:** Any time

**Introduced in release:** 3.1 4/04

**User\_env** (string)

A file that contains environment variables to be set before listener startup and shutdown. Those environment variables that have values that differ from Oracle defaults must be defined in this file.

For example, a user's `listener.ora` file might not reside under the `/var/opt/oracle` directory or the `$ORACLE_HOME/network/admin.` directory. In this situation, the `TNS_ADMIN` environment variable should be defined.

The definition of each environment variable that is defined must follow the format `VARIABLE_NAME=VARIABLE_VALUE`. Each of these environment variables must be specified, one per line in the environment file.

**Default:** ""

**Range:** Not applicable

**Tunable:** Any time



# Preset Actions for DBMS Errors and Logged Alerts

---

Preset actions for DBMS errors and logged alerts are listed as follows:

- DBMS errors for which an action is preset are listed in [Table 1](#).
- Logged alerts for which an action is preset are listed in [Table 2](#).

TABLE 1 Preset Actions for DBMS Errors

| Error Number | Action  | Connection State | New State | Message                                                       |
|--------------|---------|------------------|-----------|---------------------------------------------------------------|
| 18           | NONE    | co               | di        | Max. number of DBMS sessions exceeded                         |
| 20           | NONE    | co               | di        | Max. number of DBMS processes exceeded                        |
| 28           | NONE    | on               | di        | Session killed by DBA, will reconnect                         |
| 50           | SWITCH  | *                | di        | O/S error occurred while obtaining an enqueue. See o/s error. |
| 51           | NONE    | *                | di        | timeout occurred while waiting for resource                   |
| 55           | NONE    | *                | *         | maximum number of DML locks in DBMS exceeded                  |
| 62           | STOP    | *                | di        | Need to set DML_LOCKS in init.ora file to value other than 0  |
| 107          | RESTART | *                | di        | failed to connect to ORACLE listener process                  |
| 257          | NONE    | *                | di        | archiver error. Connect internal only, until freed.           |
| 290          | SWITCH  | *                | di        | Operating system archival error occurred. Check alert log.    |
| 447          | SWITCH  | *                | di        | fatal error in background process                             |
| 448          | RESTART | *                | di        | normal completion of background process                       |
| 449          | RESTART | *                | di        | background process '%s' unexpectedly terminated with error %s |
| 470          | SWITCH  | *                | di        | Oracle background process died                                |
| 471          | SWITCH  | *                | di        | Oracle background process died                                |

TABLE 1 Preset Actions for DBMS Errors (Continued)

| Error Number | Action  | Connection State | New State | Message                                                                           |
|--------------|---------|------------------|-----------|-----------------------------------------------------------------------------------|
| 472          | SWITCH  | *                | di        | Oracle background process died                                                    |
| 473          | SWITCH  | *                | di        | Oracle background process died                                                    |
| 474          | RESTART | *                | di        | SMON died, warm start required                                                    |
| 475          | SWITCH  | *                | di        | Oracle background process died                                                    |
| 476          | SWITCH  | *                | di        | Oracle background process died                                                    |
| 477          | SWITCH  | *                | di        | Oracle background process died                                                    |
| 480          | RESTART | *                | di        | LCK* process terminated with error                                                |
| 481          | RESTART | *                | di        | LMON process terminated with error                                                |
| 482          | RESTART | *                | di        | LMD* process terminated with error                                                |
| 602          | SWITCH  | *                | di        | internal programming exception                                                    |
| 604          | NONE    | on               | di        | Recursive error                                                                   |
| 705          | RESTART | *                | di        | inconsistent state during start up                                                |
| 942          | NONE    | on               | *         | Warning - V\$SYSSTAT not accessible - check grant on V_\$SYSSTAT                  |
| 1001         | NONE    | on               | di        | Lost connection to database                                                       |
| 1002         | NONE    | on               | *         | Internal error in HA-DBMS Oracle                                                  |
| 1003         | NONE    | on               | di        | Resetting database connection                                                     |
| 1012         | NONE    | on               | di        | Not logged on                                                                     |
| 1012         | RESTART | di               | co        | Not logged on                                                                     |
| 1014         | NONE    | *                | *         | ORACLE shutdown in progress                                                       |
| 1017         | STOP    | *                | *         | Please correct login information in HA-DBMS Oracle database configuration         |
| 1031         | NONE    | on               | *         | Insufficient privileges to perform DBMS operations - check Oracle user privileges |
| 1033         | NONE    | co               | co        | Oracle is in the shutdown or initialization process                               |
| 1033         | NONE    | *                | di        | Oracle is in the shutdown or initialization process                               |
| 1034         | RESTART | co               | co        | Oracle is not available                                                           |
| 1034         | RESTART | di               | co        | Oracle is not available                                                           |
| 1034         | NONE    | on               | di        | Oracle is not available                                                           |



TABLE 1 Preset Actions for DBMS Errors (Continued)

| Error Number | Action  | Connection State | New State | Message                                                                           |
|--------------|---------|------------------|-----------|-----------------------------------------------------------------------------------|
| 1035         | RESTART | co               | co        | Access restricted - restarting database to reset                                  |
| 1041         | NONE    | on               | di        |                                                                                   |
| 1041         | NONE    | di               | co        |                                                                                   |
| 1045         | NONE    | co               | *         | Fault monitor user lacks CREATE SESSION privilege logon denied.                   |
| 1046         | RESTART | *                | di        | cannot acquire space to extend context area                                       |
| 1050         | RESTART | *                | di        | cannot acquire space to open context area                                         |
| 1053         | SWITCH  | *                | *         | user storage address cannot be read or written                                    |
| 1054         | SWITCH  | *                | *         | user storage address cannot be read or written                                    |
| 1075         | NONE    | co               | on        | Already logged on                                                                 |
| 1089         | NONE    | on               | di        | immediate shutdown in progress                                                    |
| 1089         | NONE    | *                | *         | Investigate! Could be hanging!                                                    |
| 1090         | NONE    | *                | di        | shutdown in progress - connection is not permitted                                |
| 1092         | NONE    | *                | di        | ORACLE instance terminated. Disconnection forced                                  |
| 1513         | SWITCH  | *                | *         | invalid current time returned by operating system                                 |
| 1542         | NONE    | on               | *         | table space is off-line - please correct!                                         |
| 1552         | NONE    | on               | *         | rollback segment is off-line - please correct!                                    |
| 1950         | NONE    | on               | *         | Insufficient privileges to perform DBMS operations - check Oracle user privileges |
| 2701         | STOP    | *                | *         | HA-DBMS Oracle error - ORACLE_HOME did not get set!                               |
| 2703         | RESTART | *                | di        |                                                                                   |
| 2704         | RESTART | *                | di        |                                                                                   |
| 2709         | RESTART | *                | di        |                                                                                   |
| 2710         | RESTART | *                | di        |                                                                                   |
| 2719         | RESTART | *                | di        |                                                                                   |
| 2721         | RESTART | *                | *         |                                                                                   |
| 2726         | STOP    | *                | *         | Could not locate ORACLE executables - check ORACLE_HOME setting                   |
| 2735         | RESTART | *                | *         | osnfpmp: cannot create shared memory segment                                      |
| 2811         | SWITCH  | *                | *         | Unable to attach shared memory segment                                            |

TABLE 1 Preset Actions for DBMS Errors (Continued)

| Error Number | Action  | Connection State | New State | Message                                                           |
|--------------|---------|------------------|-----------|-------------------------------------------------------------------|
| 2839         | SWITCH  | *                | *         | Sync of blocks to disk failed.                                    |
| 2840         | SWITCH  | *                | *         |                                                                   |
| 2846         | SWITCH  | *                | *         |                                                                   |
| 2847         | SWITCH  | *                | *         |                                                                   |
| 2849         | SWITCH  | *                | *         |                                                                   |
| 2842         | RESTART | *                | *         | Client unable to fork a server - Out of memory                    |
| 3113         | RESTART | co               | di        | lost connection                                                   |
| 3113         | NONE    | on               | di        | lost connection                                                   |
| 3113         | NONE    | di               | di        | lost connection                                                   |
| 3114         | NONE    | *                | co        | Not connected?                                                    |
| 4030         | RESTART | *                | *         |                                                                   |
| 4032         | RESTART | *                | *         |                                                                   |
| 4100         | RESTART | *                | *         | communication area cannot be allocated insufficient memory        |
| 6108         | STOP    | co               | *         | Can't connect to remote database - make sure SQL*Net server is up |
| 6114         | STOP    | co               | *         | Can't connect to remote database - check SQL*Net configuration    |
| 7205         | SWITCH  | *                | di        |                                                                   |
| 7206         | SWITCH  | *                | di        |                                                                   |
| 7208         | SWITCH  | *                | di        |                                                                   |
| 7210         | SWITCH  | *                | di        |                                                                   |
| 7211         | SWITCH  | *                | di        |                                                                   |
| 7212         | SWITCH  | *                | di        |                                                                   |
| 7213         | SWITCH  | *                | di        |                                                                   |
| 7214         | SWITCH  | *                | di        |                                                                   |
| 7215         | SWITCH  | *                | di        |                                                                   |
| 7216         | SWITCH  | *                | di        |                                                                   |
| 7218         | SWITCH  | *                | di        |                                                                   |
| 7219         | RESTART | *                | *         | slspool: unable to allocate spooler argument buffer.              |

TABLE 1 Preset Actions for DBMS Errors (Continued)

| Error Number | Action  | Connection State | New State | Message                                                                      |
|--------------|---------|------------------|-----------|------------------------------------------------------------------------------|
| 7223         | RESTART | *                | *         | slspool: fork error, unable to spawn spool process. - Resource limit reached |
| 7224         | SWITCH  | *                | *         |                                                                              |
| 7229         | SWITCH  | *                | *         |                                                                              |
| 7232         | SWITCH  | *                | *         |                                                                              |
| 7234         | SWITCH  | *                | *         |                                                                              |
| 7238         | SWITCH  | *                | *         | slemcl: close error.                                                         |
| 7250         | RESTART | *                | *         |                                                                              |
| 7251         | RESTART | *                | *         |                                                                              |
| 7252         | RESTART | *                | *         |                                                                              |
| 7253         | RESTART | *                | *         |                                                                              |
| 7258         | RESTART | *                | *         |                                                                              |
| 7259         | RESTART | *                | *         |                                                                              |
| 7263         | SWITCH  | *                | *         |                                                                              |
| 7269         | SWITCH  | *                | *         |                                                                              |
| 7279         | SWITCH  | *                | *         |                                                                              |
| 7280         | RESTART | *                | *         |                                                                              |
| 7296         | SWITCH  | *                | *         |                                                                              |
| 7297         | SWITCH  | *                | *         |                                                                              |
| 7306         | RESTART | *                | *         |                                                                              |
| 7310         | SWITCH  | *                | *         |                                                                              |
| 7315         | SWITCH  | *                | *         |                                                                              |
| 7321         | SWITCH  | *                | *         |                                                                              |
| 7322         | SWITCH  | *                | *         |                                                                              |
| 7324         | RESTART | *                | *         |                                                                              |
| 7325         | RESTART | *                | *         |                                                                              |
| 7351         | SWITCH  | *                | *         |                                                                              |
| 7361         | RESTART | *                | *         |                                                                              |

**TABLE 1** Preset Actions for DBMS Errors (Continued)

| Error Number | Action  | Connection State | New State | Message |
|--------------|---------|------------------|-----------|---------|
| 7404         | SWITCH  | *                | *         |         |
| 7414         | RESTART | *                | *         |         |
| 7415         | RESTART | *                | *         |         |
| 7417         | SWITCH  | *                | *         |         |
| 7418         | SWITCH  | *                | *         |         |
| 7419         | SWITCH  | *                | *         |         |
| 7430         | SWITCH  | *                | *         |         |
| 7455         | SWITCH  | *                | *         |         |
| 7456         | SWITCH  | *                | *         |         |
| 7466         | SWITCH  | *                | *         |         |
| 7470         | SWITCH  | *                | *         |         |
| 7475         | SWITCH  | *                | *         |         |
| 7476         | SWITCH  | *                | *         |         |
| 7477         | SWITCH  | *                | *         |         |
| 7478         | SWITCH  | *                | *         |         |
| 7479         | SWITCH  | *                | *         |         |
| 7481         | SWITCH  | *                | *         |         |
| 9706         | SWITCH  | *                | *         |         |
| 9716         | SWITCH  | *                | *         |         |
| 9718         | RESTART | *                | *         |         |
| 9740         | SWITCH  | *                | *         |         |
| 9748         | SWITCH  | *                | *         |         |
| 9747         | RESTART | *                | *         |         |
| 9749         | RESTART | *                | *         |         |
| 9751         | RESTART | *                | *         |         |
| 9755         | RESTART | *                | *         |         |
| 9757         | RESTART | *                | *         |         |

TABLE 1 Preset Actions for DBMS Errors (Continued)

| Error Number | Action  | Connection State | New State | Message |
|--------------|---------|------------------|-----------|---------|
| 9756         | SWITCH  | *                | *         |         |
| 9758         | SWITCH  | *                | *         |         |
| 9761         | RESTART | *                | *         |         |
| 9765         | RESTART | *                | *         |         |
| 9779         | RESTART | *                | *         |         |
| 9829         | RESTART | *                | *         |         |
| 9831         | SWITCH  | *                | *         |         |
| 9834         | SWITCH  | *                | *         |         |
| 9836         | SWITCH  | *                | *         |         |
| 9838         | SWITCH  | *                | *         |         |
| 9837         | RESTART | *                | *         |         |
| 9844         | RESTART | *                | *         |         |
| 9845         | RESTART | *                | *         |         |
| 9846         | RESTART | *                | *         |         |
| 9847         | RESTART | *                | *         |         |
| 9853         | SWITCH  | *                | *         |         |
| 9854         | SWITCH  | *                | *         |         |
| 9856         | RESTART | *                | *         |         |
| 9874         | SWITCH  | *                | *         |         |
| 9876         | SWITCH  | *                | *         |         |
| 9877         | RESTART | *                | *         |         |
| 9878         | RESTART | *                | *         |         |
| 9879         | RESTART | *                | *         |         |
| 9885         | RESTART | *                | *         |         |
| 9888         | RESTART | *                | *         |         |
| 9894         | RESTART | *                | *         |         |
| 9909         | RESTART | *                | *         |         |

TABLE 1 Preset Actions for DBMS Errors (Continued)

| Error Number | Action  | Connection State | New State | Message                                                                                                     |
|--------------|---------|------------------|-----------|-------------------------------------------------------------------------------------------------------------|
| 9912         | RESTART | *                | *         |                                                                                                             |
| 9913         | RESTART | *                | *         |                                                                                                             |
| 9919         | SWITCH  | *                | *         |                                                                                                             |
| 9943         | RESTART | *                | *         |                                                                                                             |
| 9947         | RESTART | *                | *         |                                                                                                             |
| 9948         | SWITCH  | *                | *         |                                                                                                             |
| 9949         | SWITCH  | *                | *         |                                                                                                             |
| 9950         | SWITCH  | *                | *         |                                                                                                             |
| 12505        | STOP    | *                | *         | TNS:listener could not resolve SID given in connect descriptor.Check listener configuration file.           |
| 12541        | STOP    | *                | *         | TNS:no listener. Please verify connect_string property, listener and TNSconfiguration.                      |
| 12545        | SWITCH  | *                | *         | Please check HA-Oracle parameters. Connect failed because target host or object does not exist              |
| 27100        | STOP    | *                | *         | Shared memory realm already exists                                                                          |
| 98765        | STOP    | *                | *         | Database role queried from database does not match the Sun Cluster resource's dataguard role configuration. |
| 99999        | RESTART | *                | di        | Monitor detected death of Oracle background processes.                                                      |

TABLE 2 Preset Actions for Logged Alerts

| Alert String                     | Action | Connection State | New State | Message                                                                      |
|----------------------------------|--------|------------------|-----------|------------------------------------------------------------------------------|
| ORA-07265                        | SWITCH | *                | di        | Semaphore access problem                                                     |
| found dead multi-threaded server | NONE   | *                | *         | Warning: Multi-threaded Oracle server process died (restarted automatically) |
| found dead dispatcher            | NONE   | *                | *         | Warning: Oracle dispatcher process died (restarted automatically)            |



## Sample Configurations for ASM with Sun Cluster HA for Oracle

---

This appendix contains diagrams that explain various sample configurations of ASM with Sun Cluster HA for Oracle. The diagrams in this section help you to choose the appropriate ASM instance and provides information about the dependencies between Sun Cluster HA for Oracle resources and new ASM services.

### **Choosing the Appropriate ASM Instance**

Once you decide to use ASM with Oracle, you should choose the appropriate ASM instance. You can use the following diagram to find out if you require single instance ASM or clustered instance ASM.

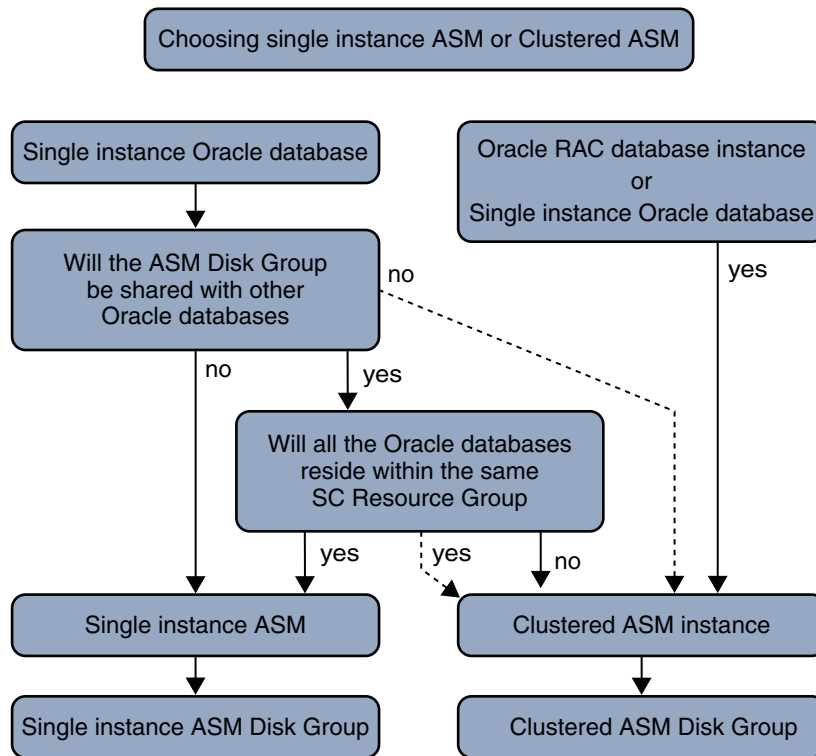


FIGURE 1 Choosing the Appropriate ASM Instance

## Single Instance ASM with Separate Disk Groups

This section contains two sample configuration diagrams for single instance Oracle databases with single instance ASM and single instance ASM disk groups. The second diagram is a continuation of the first diagram.

The following diagram represents a single instance ASM that serves two single instance Oracle databases DB1 and DB2 on a node Node1. The database DB1 exclusively uses an ASM disk group DG1 and the database DB2 exclusively uses an ASM disk group DG2. The upper part of the diagram shows the relationships that the Oracle database instances with the single ASM instances on Node1 and Node2. The single instance ASM manages two ASM disk groups DG1 and DG2 on Node1. The lower part of the diagram represents the existing Sun Cluster resource group and resources for single instance Oracle databases and their functional requirements for single instance ASM services.

In the diagram the dotted boxes represent existing Sun Cluster HA for Oracle resources with new ASM services. Inside the nodes, new dependencies between Sun Cluster HA for Oracle resources and single instance ASM services are represented using arrows.



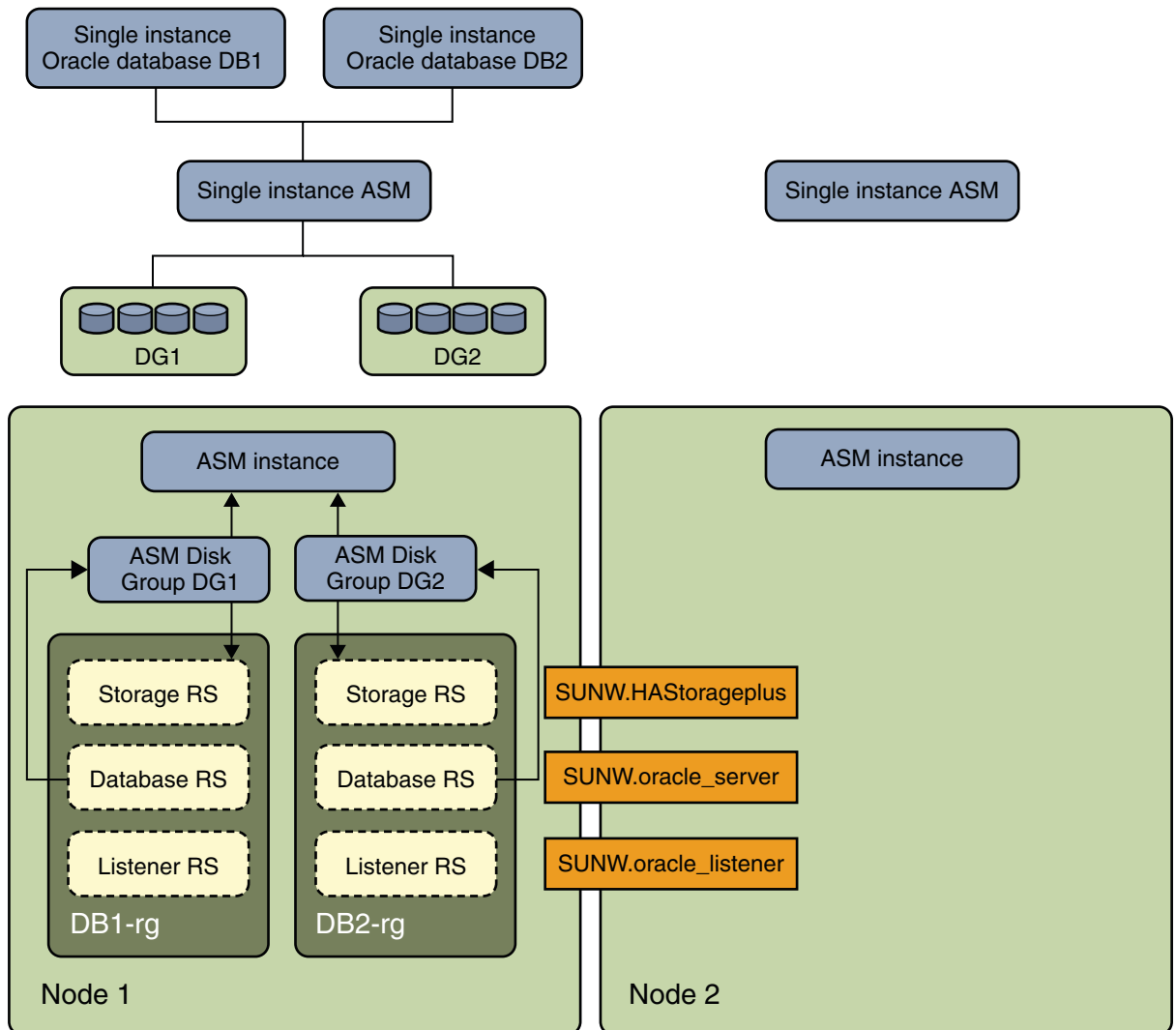


FIGURE 2 Single Instance ASM with Separate Disk Groups [1]

The following diagram is a continuation of the previous diagram in this section. In this diagram, the single instance Oracle database DB2 that exclusively uses ASM disk group DG2 is running on Node2 after a failover of resource group DB2-rg to Node2. The upper part of the diagram shows the relationships of the Oracle database instances with the single ASM instances on Node1 and Node2. The ASM disk group DG2 is now served from the single instance ASM on Node2 while ASM disk group DG1 is served by the single instance ASM on Node1.

The lower part of the diagram represents the existing Sun Cluster resource groups and resources for single instance Oracle databases and their requirement for single instance ASM services.

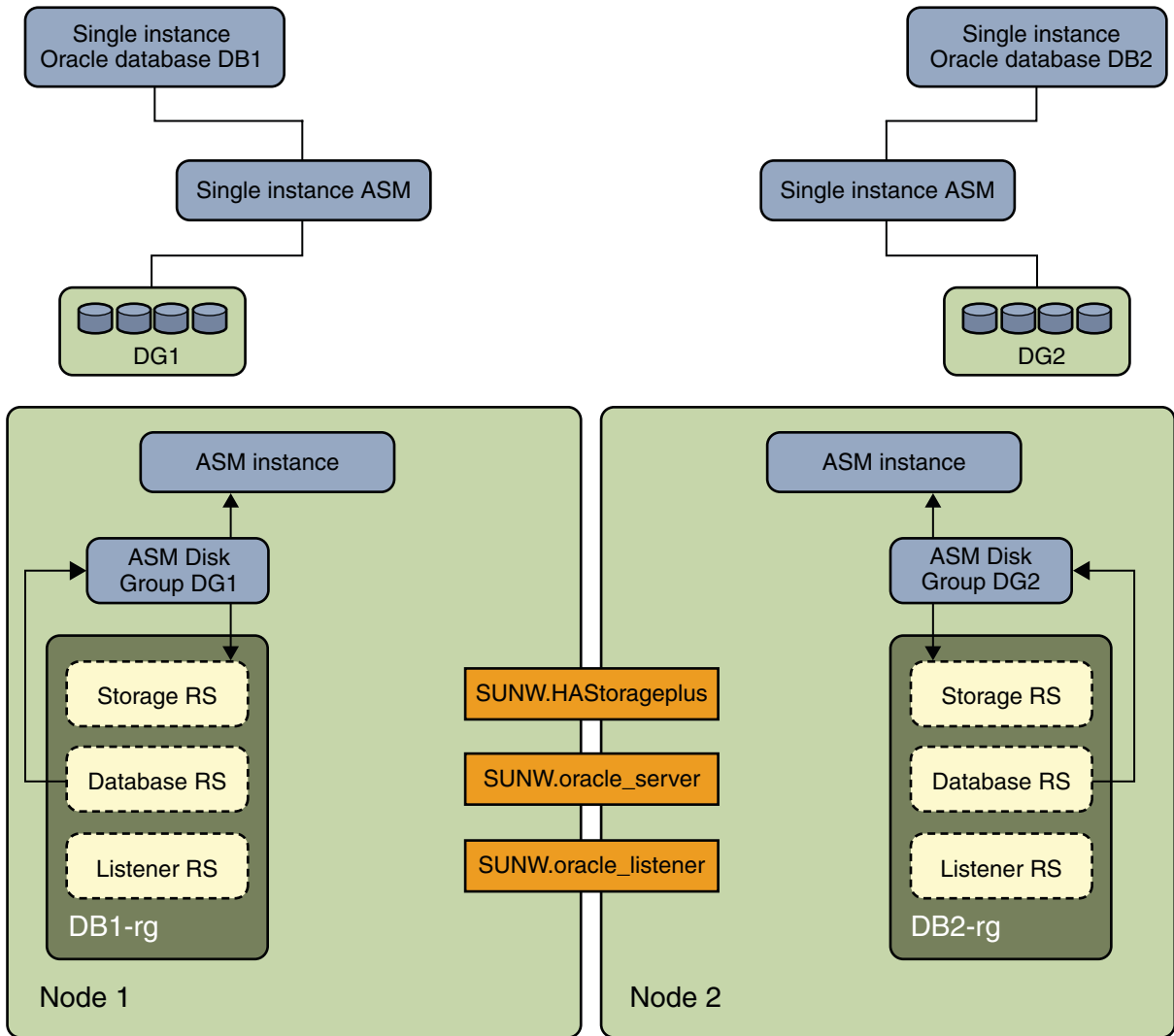


FIGURE 3 Single Instance ASM with Separate Disk Groups[2]

## Clustered ASM with Clustered Diskgroups

This section contains sample configurations of single instance Oracle databases with clustered ASM instances and clustered ASM disk groups. There are two diagrams and the second diagram is a continuation of the first diagram.

The following diagram represents clustered ASM instances that serves two single instance Oracle databases, DB1 and DB2 on Node1. The databases DB1 or DB2 can use either one of the ASM disk groups DG1 and DG2 or both the disk groups as these are clustered ASM disk groups. The upper part of the diagram shows the relationships of the Oracle database instances with the clustered ASM instances on Node1 and Node2. The clustered ASM instances manage two ASM disk groups on both nodes at the same time. The lower part of the diagram represents the existing Sun Cluster resource group and resources for single instance Oracle databases and their requirement for clustered ASM services.

The dotted box represents existing Sun Cluster HA for Oracle resources with the new ASM resources. The arrows represent new dependencies between Sun Cluster HA for Oracle and clustered ASM services.

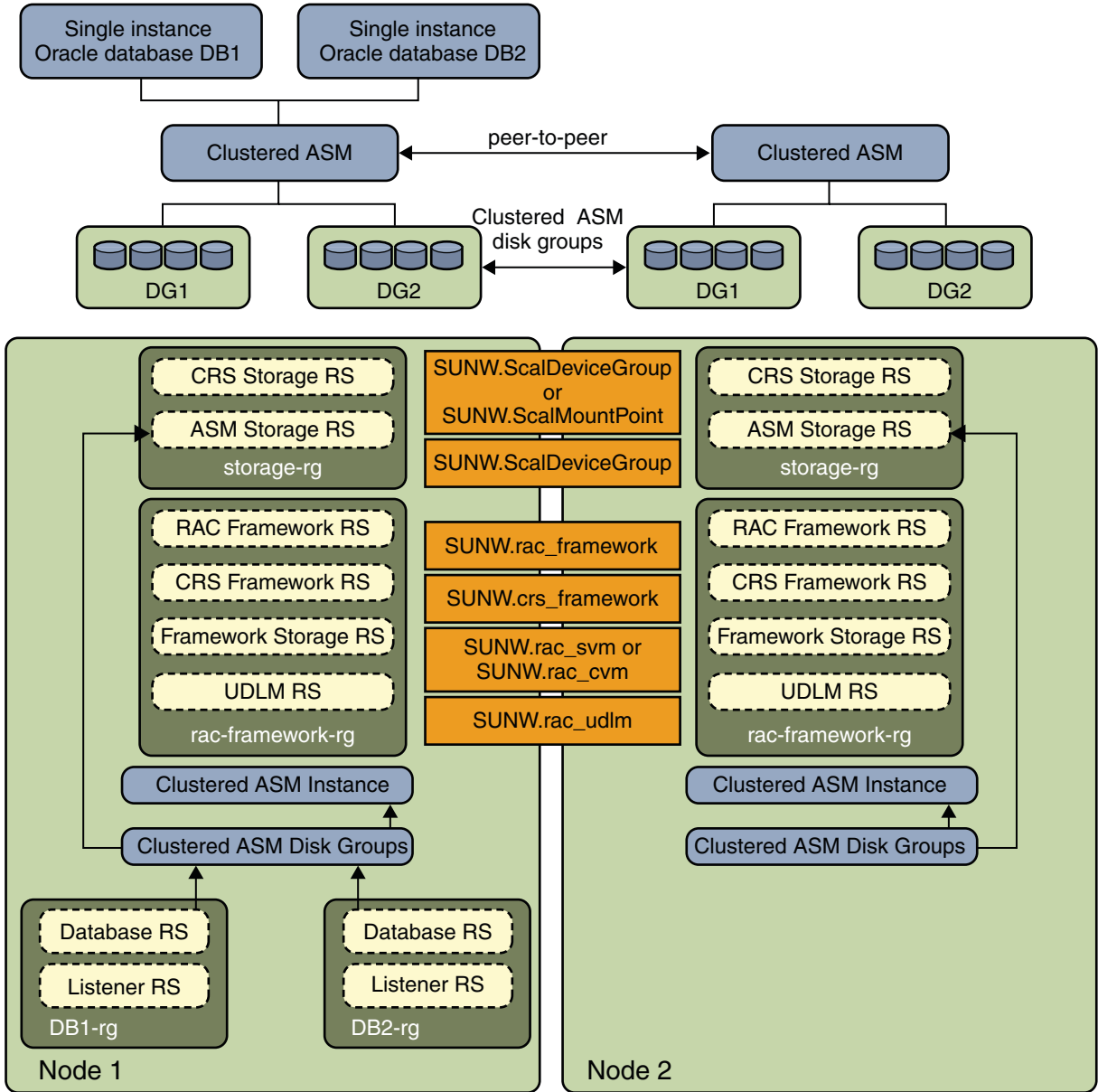


FIGURE 4 Clustered ASM with Clustered Disk Groups[1]

In the following diagram, a single instance Oracle database DB2 that shares ASM disk groups DG1 and DG2 is now running on Node2 after a failover of resource groups DB2- rg to Node2. The upper part of the diagram shows the relationships of the Oracle database instances with the

clustered ASM instances on Node1 and Node2. The clustered ASM instances manage two ASM disk groups on both nodes at the same time. The lower part of the diagram represents the existing Sun Cluster resource group and resources for single instance Oracle databases and their requirement for clustered ASM services. If the storage type is hardware RAID, the resource types `SUNW.ScaleDeviceGroup`, `SUNW.rac_svm` and `SUNW.rac_cvm` is not required.

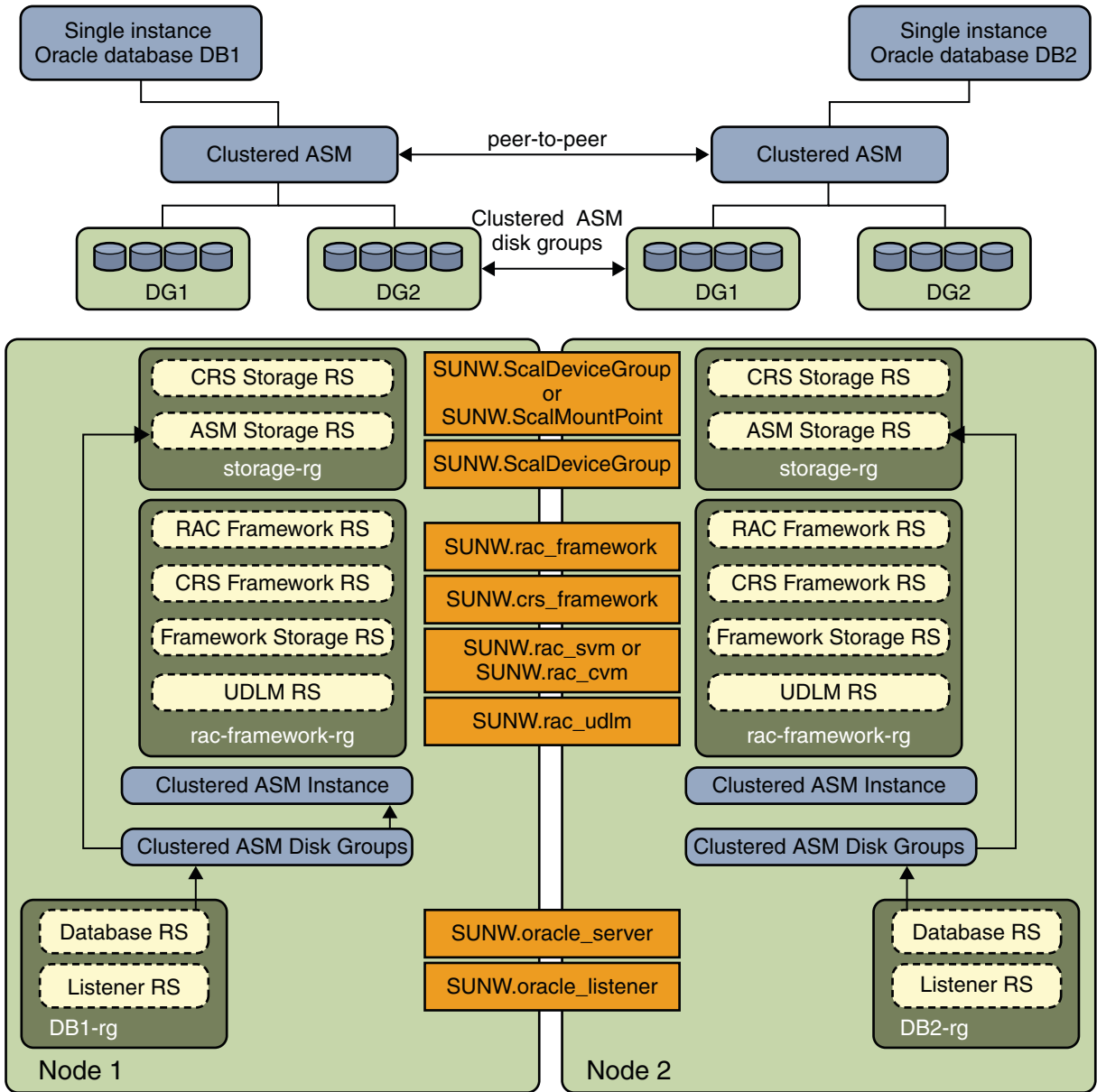


FIGURE 5 Clustered ASM with Clustered Disk Groups [2]

## Single Instance ASM with Separate Disk Groups in a Non-Global Zone

This section provides information on the dependency requirements for single instance ASM with single instance Oracle databases and single instance ASM disk groups in non-global zones. There are two diagrams, where the second diagram is a continuation of the first diagram.

The following diagram represents a single instance ASM that serves two single instance Oracle databases DB1 and DB2 running within a non-global zone ZoneA on Node1. The database DB1 exclusively uses ASM disk group DG1 and database DB2 exclusively uses ASM disk group DG2.

The upper part of the diagram shows the relationships of the Oracle database instances with the clustered ASM instances on Node1 and Node2. The single instance ASM manages two disk groups DG1 and DG2 on Node1. The lower part of the diagram represents the existing Sun Cluster resource groups and resources to independently failover DB1, DG1 or DB2, DG2 to ZoneA on Node2.

In the diagram the dotted boxes represent existing Sun Cluster HA for Oracle resources with new ASM resources. Inside the nodes, new dependencies between Sun Cluster HA for Oracle resources and single instance ASM resources are represented using arrows.

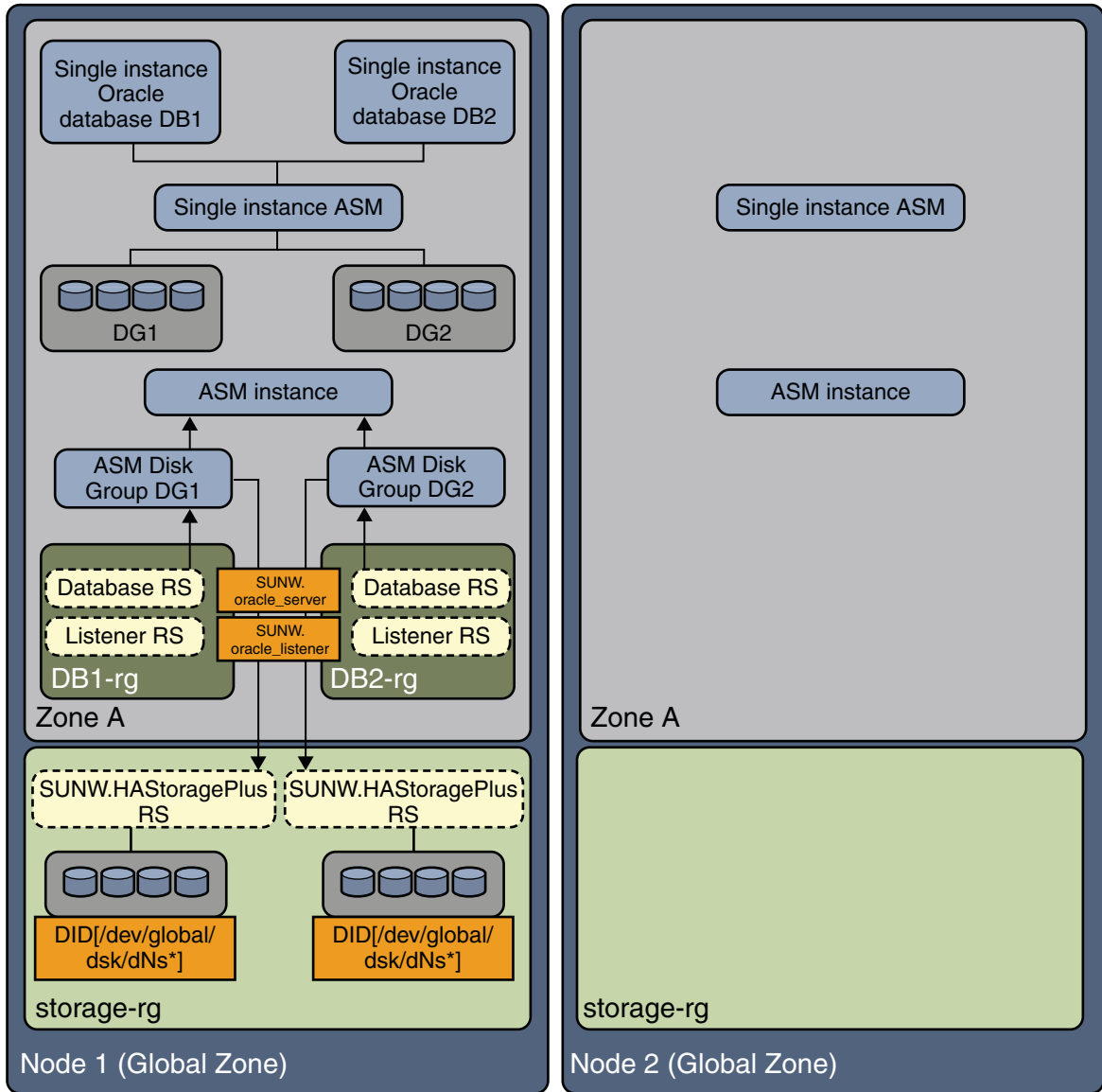


FIGURE 6 Single Instance ASM with Separate Disk Groups in a Non-Global Zone [1]

The following diagram is a continuation of the previous diagram. In this diagram, the single instance Oracle database DB2 that exclusively uses ASM disk group DG2 is running on Node2 after a failover of resource group DB2-rg to Node2. The upper part of the diagram within the non-global zone shows the relationships of the Oracle database instances with the single



instance ASM instances on Node1 and Node2. The ASM disk group DG2 is now served from the single instance ASM in ZoneA on Node2 while ASM disk group DG1 is served by the single instance ASM in ZoneA on Node1.

The lower part of the diagram represents the existing Sun Cluster resource groups and resources to independently failover DB1, DG1 or DB2, DG2 to ZoneA on Node2.

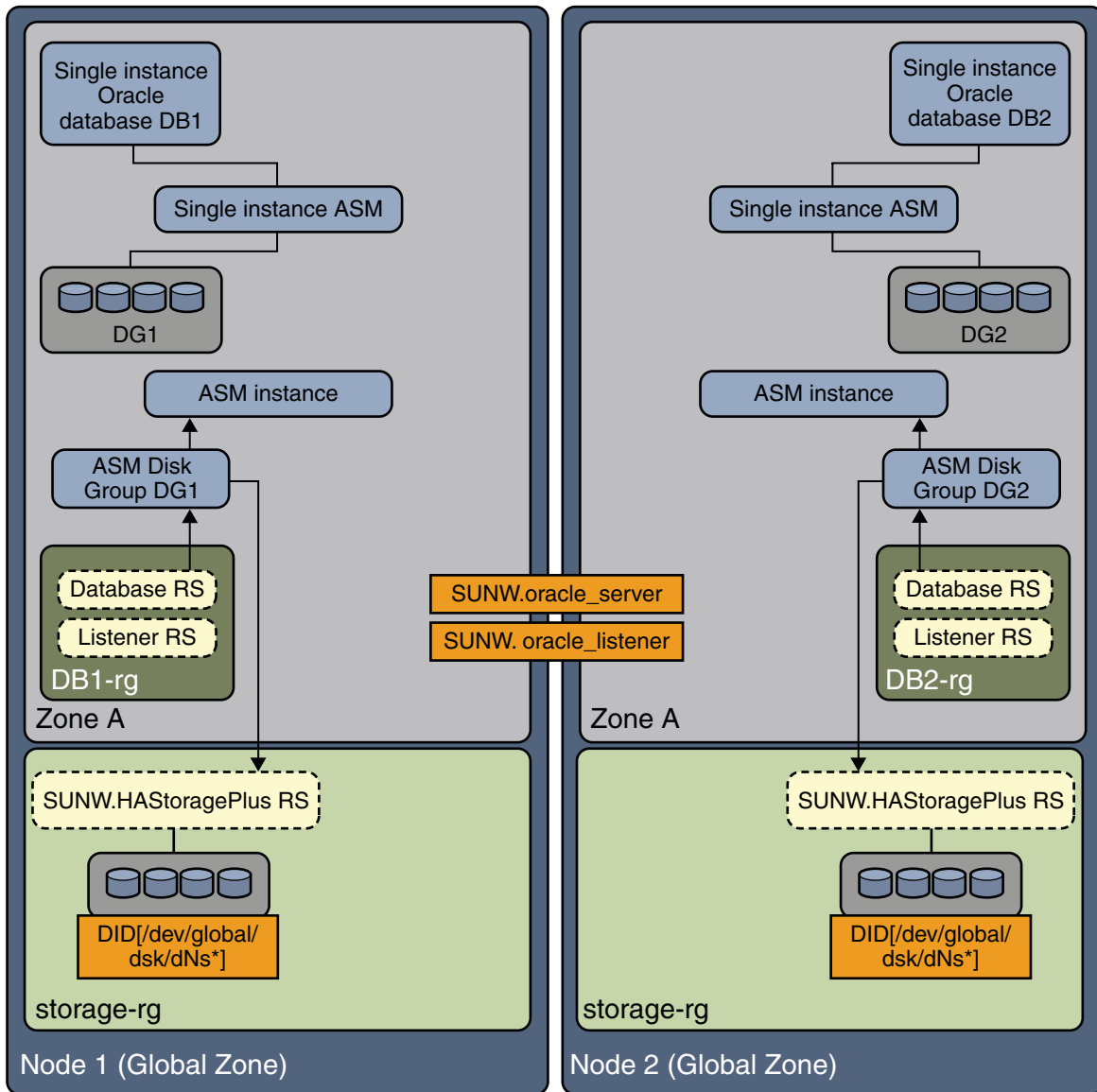


FIGURE 7 Single Instance ASM with Separate Disk Groups in a Non-Global Zone [2]

# Index

---

## A

action file, *See* custom action file

ACTION keyword, 66

actions

- listener fault monitor, 63

- preset for fault monitor, 87-94

- server fault monitor

  - definition, 62

  - modifying, 66

adding, messages to log files, 67

Alert\_log\_file extension property, 81

alert logs

- modifying response to errors, 69-70

- use of by fault monitor, 62-63

ASM

- configuration requirements, 17

- installing, 23

Auto\_End\_Bkp extension property, 81

## C

caution notice, server fault monitor customizations, 64

changing, *See* modifying

clnode command, 12

commands, node information, 12

configuring

- Oracle database using ASM, 22

- Oracle database using Solaris Volume Manager, 21

- Sun Cluster HA for Oracle

  - performing, 34-57

  - planning, 16-18

Connect\_cycle extension property, 82

Connect\_string extension property, 82

CONNECTION\_STATE keyword, 66

core files, fault monitors, 63

custom action file

- format, 65-67

- maximum number of entries in, 65

- order of entries in, 69

- propagating to cluster nodes, 73

- specifying, 73-74

- validating, 73

Custom\_action\_file extension property, 82

customizing, server fault monitor, 64-74

## D

database management system (DBMS)

- errors

  - modifying response to, 67-69

  - preset actions, 87-94

- timeouts, 63

database-related files, configuration requirements, 17

databases, Oracle, 27-28

DataGuard instance, modifying role, 78-79

DBMS (database management system)

- errors

  - modifying response to, 67-69

  - preset actions, 87-94

- timeouts, 63

Debug\_level extension property, server, 83

**E**

## editing

- listener resource type instances, 75-76

- server resource type instances, 77-78

ERROR keyword, 65

ERROR\_TYPE keyword, 65

## errors

- in custom action file, 73

## DBMS

- modifying response to, 67-69

- preset actions for, 87-94

- ignoring, 68-69

- responding to, 67-68

SGA, 67

## timeouts

- core-file creation, 63

- modifying maximum allowed, 70-72

- types detected by fault monitor, 64

## extension properties

- SUNW.oracle\_listener resource type, 85-86

- SUNW.oracle\_server resource type, 81-85

**F**

## fault monitors

## actions

- listener fault monitor, 63

- modifying, 66

- server fault monitor, 62

alert logs, 62-63

caution notice, 64

core-file creation, 63

customizing, 64-74

error types detected by, 64

## Oracle listener

- resource type for, 59

## Oracle server

- resource type for, 59

preset actions, 87-94

tuning, 59-63

## files

## alert log

- modifying response to errors in, 69-70

- use of by fault monitor, 62-63

files (*Continued*)

## core

- fault monitors, 63

## custom action

- format, 65-67

- order of entries in, 69

- propagating to cluster nodes, 73

- specifying, 73-74

- validating, 73

database, 17

Oracle application, 17

## RTR

- listener, 75

- server, 77

Sun Cluster HA for Oracle logs

- additional messages in, 67

- location, 59

fragmentation, of memory, 67

**G**

global zone, 32

**H**

heap memory, 68

help, 12

hot backup mode, 82

**I**

ignoring, minor errors, 68-69

## installing

- ASM software, 23

- Oracle software, 21-22

- Sun Cluster HA for Oracle, 32-34

- planning, 16-18

insufficient memory errors, 67, 68

**K**

keywords, custom action file, 65

**L**

listener, extension properties, 85-86  
 listener fault monitor, 63  
 LISTENER\_NAME extension property, 85  
 local zones, *See* non-global zones  
 log files  
     Sun Cluster HA for Oracle  
         additional messages in, 67  
         location, 59  
 logged alerts  
     modifying response to, 69-70  
     use of by fault monitor, 62-63

**M**

maximum values  
     entries in custom action file, 65  
     number of allowed timeouts, 70-72  
 memory  
     shortage of, 67, 68  
 MESSAGE keyword, 67  
 messages file, 12  
 migrating  
     listener resource type instances, 75-76  
     server resource type instances, 77-78  
 modifying  
     DataGuard instance role, 78-79  
     number of allowed timeouts, 70-72  
     response to DBMS errors, 67-69  
     response to logged alerts, 69-70  
     server fault monitor actions, 66

**N**

NEW\_STATE keyword, 66  
 non-global zones, 32

**O**

Oracle  
     *See also* Sun Cluster HA for Oracle  
     application files, 17  
     clients, 59  
     database  
         configuring using ASM, 22  
         configuring using Solaris Volume Manager, 21  
         creating, 27-28  
         setting permissions, 28-32  
     error numbers, 87-94  
     installing, 21-22  
     preparing nodes for installation of, 19-21  
     verifying installation, 26  
 Oracle DataGuard, 27-28  
 ORACLE\_HOME extension property  
     listener, 85  
     server, 83  
 oracle\_listener resource type, extension  
     properties, 85-86  
 oracle\_server resource type, extension  
     properties, 81-85  
 ORACLE\_SID extension property, 83  
 order, entries in custom action file, 69  
 overriding, server fault monitor presets, 64-74

**P**

packages, 32-34  
 Parameter\_file extension property, 84  
 planning, Sun Cluster HA for Oracle  
     configuration, 16-18  
 preset actions, fault monitor, 87-94  
 preventing  
     unnecessary restarts  
         for DBMS errors, 68-69  
         for timeouts, 70-72  
 primary database instances, 27-28  
 Probe\_timeout extension property  
     listener, 85  
     server, 84  
 properties  
     *See also* extension properties

properties (*Continued*)

- Type\_version
  - listener, 75
  - server, 77

- prtcnf -v command, 12
- prtdiag -v command, 12
- psrinfo -v command, 12

**R**

## registering

- Sun Cluster HA for Oracle
  - generally, 34-57
  - clustered ASM, 50-57
  - during listener upgrade, 74-75
  - during server upgrade, 76-77
  - single instance ASM, 47-50

## resource type registration (RTR) file

- listener, 75
- server, 77

## resource types

- fault monitors, 59
- migrating instances of
  - listener, 75-76
  - server, 77-78

## SUNW.oracle\_listener

- extension properties, 85-86

## SUNW.oracle\_server

- extension properties, 81-85

## responding, to major errors, 67-68

## Restart\_type extension property, 84

## restarts

- preventing
  - for DBMS errors, 68-69
  - for timeouts, 70-72

## restrictions, zones, 32

## RTR (resource type registration) file

- listener, 75
- server, 77

**S**

## server, extension properties, 81-85

## server fault monitor

- actions
  - definition, 62
  - modifying, 66
- alert logs, 62-63
- caution notice, 64
- customizing, 64-74
- error types detected by, 64
- overview, 60-63
- preset actions, 87-94

## sessions

- effect of errors on, 67, 68

## SGA (shared global area), errors, 67

## shared global area (SGA), errors, 67

## show-rev subcommand, 12

## showrev -p command, 12

## software packages, 32-34

## sqlplus command, 27

## standby database instances, 27-28

## Sun Cluster HA for Oracle

*See also* Oracle

## configuration

- clustered ASM, 50-57
- performing, 34-57
- planning, 16-18
- single instance ASM, 47-50

## fault monitors, 59-63

## installing, 32-34

- overview of process, 14-16

- planning, 16-18

## log files

- additional messages in, 67
- location, 59

## registering, 34-57

## resource type versions

- listener, 74
- server, 76

## software packages, installing, 32-34

## SUNW.HAStoragePlus resource type, 41

## upgrading, 74-78

## verifying installation, 58

## SUNW.HAStoragePlus resource type, 41

## SUNW.oracle\_listener resource type, extension properties, 85-86

---

SUNW.oracle\_server resource type, extension  
  properties, 81-85  
syntax errors, custom action file, 73  
system properties, effect on fault monitors, 60

## T

technical support, 12  
timeouts  
  core-file creation, 63  
  modifying maximum allowed, 70-72  
tuning, fault monitors, 59-63  
Type\_version property  
  listener, 75  
  server, 77

## U

upgrading, Sun Cluster HA for Oracle, 74-78  
User\_env extension property  
  listener, 86  
  server, 84

## V

validating, custom action file, 73  
/var/adm/messages file, 12  
verifying  
  Oracle installation, 26  
  Sun Cluster HA for Oracle installation, 58  
versions  
  listener resource types, 74  
  server resource types, 76

## W

Wait\_for\_online extension property, 85

## Z

zones, 32

