

# *Java™ Message Service*

*JMS is an API for accessing enterprise messaging systems from Java programs.*

*Version 1.0.2 November 9, 1999*

*Please send technical comments on this specification to:  
jets-jms@eng.sun.com*

*Please send product and business questions to:  
jets-jms-business@eng.sun.com*

*Mark Hapner, Senior Staff Engineer  
Rich Burrige, Staff Engineer  
Rahul Sharma, Staff Engineer  
Sun Microsystems, JavaSoft ware*





Java™ Message Service Specification ("Specification")  
Version: 1.0.2  
Status: Final Release  
Release: 12/17/99

Copyright 1999 Sun Microsystems, Inc.  
901 San Antonio Road, Palo Alto, CA 94303, U.S.A.  
All rights reserved.

#### NOTICE.

This Specification is protected by copyright and the information described herein may be protected by one or more U.S. patents, foreign patents, or pending applications. Except as provided under the following license, no part of this Specification may be reproduced in any form by any means without the prior written authorization of Sun Microsystems, Inc. ("Sun") and its licensors, if any. Any use of this Specification and the information described herein will be governed by these terms and conditions and the Export Control and General Terms as set forth in Sun's website Legal Terms. By viewing, downloading or otherwise copying this Specification, you agree that you have read, understood, and will comply with all the terms and conditions set forth herein.

Sun hereby grants you a fully-paid, non-exclusive, non-transferable, worldwide, limited license (without the right to sublicense), under Sun's intellectual property rights that are essential to practice this Specification, to internally practice this Specification solely for the purpose of creating a clean room implementation of this Specification that: (i) includes a complete implementation of the current version of this Specification, without subsetting or supersetting; (ii) implements all of the interfaces and functionality of this Specification, as defined by Sun, without subsetting or supersetting; (iii) includes a complete implementation of any optional components (as defined by Sun in this Specification) which you choose to implement, without subsetting or supersetting; (iv) implements all of the interfaces and functionality of such optional components, without subsetting or supersetting; (v) does not add any additional packages, classes or interfaces to the "java.\*" or "javax.\*" packages or subpackages (or other packages defined by Sun); (vi) satisfies all testing requirements available from Sun relating to the most recently published version of this Specification six (6) months prior to any release of the clean room implementation or upgrade thereto; (vii) does not derive from any Sun source code or binary code materials; and (viii) does not include any Sun source code or binary code materials without an appropriate and separate license from Sun. This Specification contains the proprietary information of Sun and may only be used in accordance with the license terms set forth herein. This license will terminate immediately without notice from Sun if you fail to comply with any provision of this license. Sun may, at its sole option, terminate this license without cause upon ten (10) days notice to you. Upon termination of this license, you must cease use of or destroy this Specification.

#### TRADEMARKS.

No right, title, or interest in or to any trademarks, service marks, or trade names of Sun or Sun's licensors is granted hereunder. Sun, Sun Microsystems, the Sun logo, Java, Enterprise JavaBeans, Java Compatible, JDK, JDBC, JavaBeans, JavaMail, Write Once, Run Anywhere, and Java Naming and Directory Interface are trademarks or registered trademarks of Sun Microsystems, Inc. in the U.S. and other countries.

#### DISCLAIMER OF WARRANTIES.

THIS SPECIFICATION IS PROVIDED "AS IS". SUN MAKES NO REPRESENTATIONS OR WARRANTIES, EITHER EXPRESS OR IMPLIED, INCLUDING BUT NOT LIMITED TO, WARRANTIES OF MERCHANTABILITY, FITNESS FOR A PARTICULAR PURPOSE, OR NON-INFRINGEMENT THAT THE CONTENTS OF THE SPECIFICATION ARE SUITABLE FOR ANY PURPOSE OR THAT ANY PRACTICE OR IMPLEMENTATION OF SUCH CONTENTS WILL NOT INFRINGE ANY THIRD PARTY PATENTS, COPYRIGHTS, TRADE SECRETS OR OTHER RIGHTS. This document does not represent any commitment to release or implement any portion of this Specification in any product.

THIS SPECIFICATION COULD INCLUDE TECHNICAL INACCURACIES OR TYPOGRAPHICAL ERRORS. CHANGES ARE PERIODICALLY ADDED TO THE INFORMATION HEREIN; THESE CHANGES WILL BE INCORPORATED INTO NEW VERSIONS OF THE SPECIFICATION, IF ANY. SUN MAY MAKE IMPROVEMENTS AND/OR CHANGES TO THE PRODUCT(S) AND/OR THE PROGRAM(S) DESCRIBED IN THIS SPECIFICATION AT ANY TIME. Any use of such changes in the Specification will be governed by the then-current license for the applicable version of the Specification.

#### LIMITATION OF LIABILITY.

TO THE EXTENT NOT PROHIBITED BY LAW, IN NO EVENT WILL SUN OR ITS LICENSORS BE LIABLE FOR ANY DAMAGES, INCLUDING WITHOUT LIMITATION, LOST REVENUE, PROFITS OR DATA, OR FOR SPECIAL, INDIRECT, CONSEQUENTIAL, INCIDENTAL OR PUNITIVE DAMAGES, HOWEVER CAUSED AND REGARDLESS OF THE THEORY OF LIABILITY, ARISING OUT OF OR RELATED TO ANY FURNISHING, PRACTICING, MODIFYING OR ANY USE OF THE SPECIFICATION, EVEN IF SUN AND/OR ITS LICENSORS HAVE BEEN ADVISED OF THE POSSIBILITY OF SUCH DAMAGES.

You will indemnify, hold harmless, and defend Sun and its licensors from any claims arising or resulting from: (i) your use of the Specification; (ii) the use or distribution of your Java application, applet and/or clean room implementation; and/or (iii) any claims that later versions or releases of any Specification furnished to you are incompatible with the Specification provided to you under this license.



Please  
Recycle

**RESTRICTED RIGHTS LEGEND.**

Use, duplication, or disclosure by the U.S. Government is subject to the restrictions set forth in this license and as provided in DFARS 227.7202-1(a) and 227.7202-3(a) (1995), DFARS 252.227-7013(c)(1)(ii)(Oct 1988), FAR 12.212(a) (1995), FAR 52.227-19 (June 1987), or FAR 52.227-14(ALT III) (June 1987), as applicable.

**REPORT.**

You may wish to report any ambiguities, inconsistencies, or inaccuracies you may find in connection with your use of the Specification ("Feedback"). To the extent that you provide Sun with any Feedback, you hereby: (i) agree that such Feedback is provided on a non-proprietary and non-confidential basis and (ii) grant Sun a perpetual, non-exclusive, worldwide, fully paid-up, irrevocable license, with the right to sublicense through multiple levels of sublicensees, to incorporate, disclose, and use without limitation the Feedback for any purpose related to the Specification and future versions, implementations, and test suites thereof.



Please  
Recycle

# Contents

---

<b>1. Introduction</b> .....	<b>14</b>
1.1 Abstract .....	14
1.2 Overview .....	14
1.2.1 Is This a Mail API? .....	15
1.2.2 Existing Messaging Systems .....	15
1.2.3 JMS Objectives .....	16
1.2.3.1 JMS Provider .....	16
1.2.3.2 JMS Messages .....	16
1.2.3.3 JMS Domains .....	16
1.2.3.4 Portability .....	17
1.2.4 What JMS Does Not Include .....	17
1.3 What Is Required by JMS .....	18
1.4 Relationship to Other JavaSoft Enterprise APIs .....	18
1.4.1 JDBC .....	18
1.4.2 JavaBeans .....	18
1.4.3 Enterprise Java Beans .....	18
1.4.4 Java Transaction (JTA) .....	19
1.4.5 Java Transaction Service (JTS) .....	19
1.4.6 Java Naming and Directory Service (JNDI) .....	19
<b>2. Architecture</b> .....	<b>20</b>
2.1 Overview .....	20
2.2 What is a JMS Application? .....	20
2.3 Administration .....	21

2.4	Two Messaging Styles .....	21
2.5	JMS Interfaces .....	21
2.6	Developing a JMS Application .....	23
2.6.1	Developing a JMS Client .....	23
2.7	Security .....	23
2.8	Multi-Threading .....	24
2.9	Triggering Clients .....	25
2.10	Request/Reply .....	25
<b>3.</b>	<b>JMS Message Model .....</b>	<b>26</b>
3.1	Background.....	26
3.2	Goals .....	26
3.3	JMS Messages .....	27
3.4	Message Header Fields .....	27
3.4.1	JMSDestination.....	27
3.4.2	JMSDeliveryMode .....	28
3.4.3	JMSMessageID .....	28
3.4.4	JMSTimestamp .....	28
3.4.5	JMSCorrelationID.....	29
3.4.6	JMSReplyTo.....	30
3.4.7	JMSRedelivered .....	30
3.4.8	JMSType.....	30
3.4.9	JMSExpiration.....	31
3.4.10	JMSPriority .....	31
3.4.11	How Message Header Values Are Set.....	32
3.4.12	Overriding Message Header Fields.....	32
3.5	Message Properties .....	32
3.5.1	Property Names .....	33
3.5.2	Property Values .....	33
3.5.3	Using Properties.....	33
3.5.4	Property Value Conversion.....	33
3.5.5	Property Values as Objects .....	34
3.5.6	Property Iteration.....	34
3.5.7	Clearing a Message's Property Values.....	35
3.5.8	Non-existent Properties.....	35
3.5.9	JMS Defined Properties .....	35
3.5.10	Provider-Specific Properties .....	37
3.6	Message Acknowledgment .....	37

3.7	The Message Interface .....	37
3.8	Message Selection .....	38
3.8.1	Message Selector .....	38
3.8.1.1	Message Selector Syntax .....	39
3.8.1.2	Null Values .....	42
3.8.1.3	Special Notes .....	43
3.9	Access to Sent Messages .....	43
3.10	Changing the Value of a Received Message .....	44
3.11	JMS Message Body .....	44
3.11.1	Clearing a Message Body .....	45
3.11.2	Read-Only Message Body .....	45
3.11.3	Conversions Provided by StreamMessage and MapMes- sage .....	45
3.11.4	Messages for Non-JMS Clients .....	46
3.12	Provider Implementations of JMS Message Interfaces	47
<b>4.</b>	<b>JMS Common Facilities .....</b>	<b>48</b>
4.1	Overview .....	48
4.2	Administered Objects .....	48
4.2.1	Destination .....	49
4.2.2	ConnectionFactory .....	49
4.3	Connection .....	50
4.3.1	Authentication .....	50
4.3.2	Client Identifier .....	50
4.3.3	Connection Setup .....	51
4.3.4	Pausing Delivery of Incoming Messages .....	52
4.3.5	Closing a Connection .....	52
4.3.6	Sessions .....	53
4.3.7	ConnectionMetaData .....	54
4.3.8	ExceptionListener .....	54
4.4	Session .....	54
4.4.1	Closing a Session .....	55
4.4.2	MessageProducer and MessageConsumer Creation .	56
4.4.3	Creating TemporaryDestinations .....	56
4.4.4	Creating Destinations .....	56
4.4.5	Optimized Message Implementations .....	57
4.4.6	Conventions for Using a Session .....	57
4.4.7	Transactions .....	58



4.4.8	Distributed Transactions . . . . .	59
4.4.9	Multiple Sessions . . . . .	59
4.4.10	Message Order . . . . .	60
4.4.10.1	Order of Message Receipt . . . . .	60
4.4.10.2	Order of Message Sends . . . . .	60
4.4.11	Message Acknowledgment . . . . .	61
4.4.12	Duplicate Delivery of Messages . . . . .	62
4.4.13	Duplicate Production of Messages . . . . .	62
4.4.14	Serial Execution of Client Code . . . . .	62
4.4.15	Concurrent Message Delivery . . . . .	63
4.5	MessageConsumer . . . . .	63
4.5.1	Synchronous Delivery . . . . .	63
4.5.2	Asynchronous Delivery . . . . .	64
4.6	MessageProducer . . . . .	64
4.7	Message Delivery Mode . . . . .	65
4.8	Message Time-To-Live . . . . .	65
4.9	Exceptions . . . . .	66
4.10	Reliability . . . . .	66
<b>5.</b>	<b>JMS Point-to-Point Model . . . . .</b>	<b>68</b>
5.1	Overview . . . . .	68
5.2	Queue Management . . . . .	68
5.3	Queue . . . . .	69
5.4	TemporaryQueue . . . . .	69
5.5	QueueConnectionFactory . . . . .	69
5.6	QueueConnection . . . . .	69
5.7	QueueSession . . . . .	69
5.8	QueueReceiver . . . . .	70
5.9	QueueSender . . . . .	70
5.10	QueueBrowser . . . . .	70
5.11	QueueRequestor . . . . .	71
5.12	Reliability . . . . .	71
<b>6.</b>	<b>JMS Publish/Subscribe Model . . . . .</b>	<b>72</b>
6.1	Overview . . . . .	72
6.2	Pub/Sub Latency . . . . .	72
6.3	Durable Subscription . . . . .	73
6.4	Topic Management . . . . .	73

6.5	Topic .....	74
6.6	TemporaryTopic .....	74
6.7	TopicConnectionFactory .....	74
6.8	TopicConnection .....	75
6.9	TopicSession .....	75
6.10	TopicPublisher .....	75
6.11	TopicSubscriber .....	75
6.11.1	Durable TopicSubscriber .....	76
6.12	Recovery and Redelivery .....	76
6.13	Administering Subscriptions .....	77
6.14	TopicRequestor .....	77
6.15	Reliability .....	77
<b>7.</b>	<b>JMS Exceptions.....</b>	<b>78</b>
7.1	Overview.....	78
7.2	The JMSException .....	78
7.3	Standard Exceptions .....	79
<b>8.</b>	<b>JMS Application Server Facilities.....</b>	<b>82</b>
8.1	Overview.....	82
8.2	Concurrent Processing of a Subscription's Messages	82
8.2.1	Session .....	83
8.2.2	ServerSession .....	83
8.2.3	ServerSessionPool .....	83
8.2.4	ConnectionConsumer .....	84
8.2.5	How a ConnectionConsumer Uses a ServerSession .	84
8.2.6	How an App Server Implements a ServerSession ...	85
8.2.7	The Result .....	85
8.3	XAConnectionFactory .....	88
8.4	XAConnection .....	88
8.5	XASession .....	88
8.6	JMS Application Server Interfaces .....	89
<b>9.</b>	<b>JMS Sample Code .....</b>	<b>90</b>
9.1	Sample JMS Code .....	90
9.1.1	Background.....	90
9.1.2	Point-to-Point Setup.....	90
9.1.2.1	Getting a QueueConnectionFactory .....	91

9.1.2.2	Getting a Message Queue . . . . .	91
9.1.2.3	Getting a QueueConnection . . . . .	91
9.1.2.4	Getting a QueueSession . . . . .	91
9.1.2.5	Getting a QueueSender . . . . .	92
9.1.2.6	Getting a QueueReceiver . . . . .	92
9.1.2.7	Start Delivery of Messages . . . . .	92
9.1.3	Publish/Subscribe Messaging Domain Setup . . . . .	92
9.1.3.1	Getting a TopicConnectionFactory . . . . .	93
9.1.3.2	Getting a Message Topic . . . . .	93
9.1.3.3	Getting a TopicConnection . . . . .	93
9.1.3.4	Getting a TopicSession . . . . .	93
9.1.3.5	Getting a TopicSubscriber . . . . .	94
9.1.3.6	Getting a TopicPublisher . . . . .	94
9.1.3.7	Start Delivery of Messages . . . . .	95
9.1.4	JMS Message Types . . . . .	95
9.1.4.1	Using a BytesMessage . . . . .	95
9.1.4.2	Using a TextMessage . . . . .	95
9.1.4.3	Using a MapMessage . . . . .	96
9.1.4.4	Using a StreamMessage . . . . .	97
9.1.4.5	Using an ObjectMessage . . . . .	97
9.1.5	Point-to-Point Sending and Receiving. . . . .	98
9.1.5.1	Sending a Message . . . . .	98
9.1.5.2	Receiving a Message . . . . .	98
9.1.6	Publish/Subscribe Sending and Receiving. . . . .	98
9.1.6.1	Sending a Message . . . . .	99
9.1.6.2	Receiving a Message . . . . .	99
9.1.7	Unpacking messages . . . . .	99
9.1.7.1	Unpacking a BytesMessage . . . . .	99
9.1.7.2	Unpacking a TextMessage . . . . .	99
9.1.7.3	Unpacking a MapMessage . . . . .	99
9.1.7.4	Unpacking a StreamMessage . . . . .	100
9.1.7.5	Unpacking an ObjectMessage . . . . .	100
9.1.8	Message Selection. . . . .	101
9.1.8.1	Point-To-Point QueueReceiver Setup . . . . .	101
9.1.8.2	Publish/Subscribe TopicSubscriber Setup . . . . .	101
<b>10.</b>	<b>Issues . . . . .</b>	<b>102</b>
10.1	Resolved Issues. . . . .	102

10.1.1	JDK 1.1.x Compatibility . . . . .	102
10.1.2	Distributed Java Event Model . . . . .	102
10.1.3	Should the Two JMS Domains, PTP and Pub/Sub, be merged? . . . . .	102
10.1.4	Should JMS Specify a Set of JMS Java Beans? . . . . .	103
10.1.5	Alignment with the CORBA Notification Service . . . . .	103
10.1.6	Should JMS Provide End-to-end Synchronous Message Delivery and Notification of Delivery? . . . . .	103
10.1.7	Should JMS Provide a Send-to-List Mechanism? . . . . .	104
10.1.8	Should JMS Provide Subscription Notification? . . . . .	104
<b>11.</b>	<b>Change History . . . . .</b>	<b>106</b>
11.1	Version 1.0.1 . . . . .	106
11.1.1	JMS Exceptions . . . . .	106
11.2	Version 1.0.2 . . . . .	106
11.2.1	The Multiple Topic Subscriber Special Case . . . . .	106
11.2.2	Message Selector Comparison of Exact and Inexact Numeric Values . . . . .	107
11.2.3	Connection and Session Close . . . . .	107
11.2.4	Creating a Session on an Active Connection . . . . .	107
11.2.5	Delivery Mode and Message Retention. . . . .	107
11.2.6	The 'single thread' Use of Sessions . . . . .	107
11.2.7	Clearing a Message's Properties and Body . . . . .	108
11.2.8	Message Selector Numeric Literal Syntax . . . . .	108
11.2.9	Comparison of Boolean Values in Message Selectors . . . . .	108
11.2.10	Order of Messages Read from a Queue . . . . .	108
11.2.11	Null Values in Messages . . . . .	108
11.2.12	Closing Constituents of Closed Connections and Sessions . . . . .	108
11.2.13	The Termination of a Pending Receive on Close . . . . .	108
11.2.14	Incorrect Entry in Stream and Map Message Conversion Table . . . . .	109
11.2.15	Inactive Durable Subscription . . . . .	109
11.2.16	Read-Only Message Body . . . . .	109
11.2.17	Changing Header Fields of a Received Message . . . . .	109
11.2.18	Null/Missing Message Properties and Message Fields . . . . .	109
11.2.19	JMS Source Errata . . . . .	109
11.2.20	JMS Source JavaDoc Errata . . . . .	110

---

11.2.21	JMS Source JavaDoc Clarifications. . . . .	110
---------	--	-----

# *Introduction*

---



## *1.1 Abstract*

This specification describes the objectives and functionality of the Java Message Service (JMS).

JMS provides a common way for Java programs to create, send, receive and read an enterprise messaging system's messages.

## *1.2 Overview*

Enterprise messaging products (or as they are sometimes called, Message Oriented Middleware products) are becoming an essential component for integrating intra-company operations. They allow separate business components to be combined into a reliable, yet flexible, system.

In addition to the traditional MOM vendors, enterprise messaging products are also provided by several database vendors and a number of internet related companies.

Java language clients and Java language middle tier services must be capable of using these messaging systems. JMS provides a common way for Java language programs to access these systems.

JMS is a set of interfaces and associated semantics that define how a JMS client accesses the facilities of an enterprise messaging product.

Since messaging is peer-to-peer, all users of JMS are referred to generically as *clients*. A JMS *application* is made up of a set of application defined messages and a set of clients that exchange them.

Products that implement JMS do this by supplying a *provider* that implements the JMS interfaces.

### 1.2.1 *Is This a Mail API?*

The term *messaging* is quite broadly defined in computing. It is used for describing various operating system concepts; it is used to describe email and fax systems; and here, it is used to describe asynchronous communication between enterprise applications.

Messages, as described here, are asynchronous requests, reports or events that are consumed by enterprise applications, not humans. They contain vital information needed to coordinate these systems. They contain precisely formatted data that describe specific business actions. Through the exchange of these messages each application tracks the progress of the enterprise.

### 1.2.2 *Existing Messaging Systems*

Messaging systems are peer-to-peer facilities. In general, each client can send messages to, and receive messages from any client. Each client connects to a messaging agent which provides facilities for creating, sending and receiving messages.

Each system provides a way of addressing messages. Each provides a way to create a message and fill it with data.

Some systems are capable of broadcasting a message to many destinations. Others only support sending a message to a single destination.

Some systems provide facilities for asynchronous receipt of messages (messages are delivered to a client as they arrive). Others support only synchronous receipt (a client must request each message).

Each messaging system typically provides a range of service that can be selected on a per message basis. One important attribute is the lengths to which the system will go to insure delivery. This varies from simple best effort to guaranteed, only once delivery. Other important attributes are message time-to-live, priority and whether a response is required.

### 1.2.3 *JMS Objectives*

If JMS provided a union of all the existing features of messaging systems it would be much too complicated for its intended users. On the other hand, JMS is more than an intersection of the messaging features common to all products. It is crucial that JMS include the functionality needed to implement sophisticated enterprise applications.

JMS defines a common set of enterprise messaging concepts and facilities. It attempts to minimize the set of concepts a Java language programmer must learn to use enterprise messaging products. It strives to maximize the portability of messaging applications.

### 1.2.4 *JMS Provider*

As noted earlier, a JMS provider is the entity which implements JMS for a messaging product.

Ideally, JMS providers will be written in 100% Pure Java so they can run in applets; simplify installation; and, work across architectures and OS's.

An important goal of JMS is to minimize the work needed to implement a provider.

### 1.2.5 *JMS Messages*

JMS defines a set of message interfaces.

Clients use the message implementations supplied by their JMS provider.

A major goal of JMS is that clients have a consistent API for creating and working with messages which is independent of JMS provider.

### 1.2.6 *JMS Domains*

Messaging products can be broadly classified as either *point-to-point* or *publish-subscribe* systems.

Point-to-point (PTP) products are built around the concept of message queues. Each message is addressed to a specific queue; clients extract messages from the queue(s) established to hold their messages.



Publish and subscribe (Pub/Sub) clients address messages to some node in a content hierarchy. Publishers and subscribers are generally anonymous and may dynamically publish or subscribe to the content hierarchy. The system takes care of distributing the messages arriving from a node's multiple publishers to its multiple subscribers.

JMS provides client interfaces tailored for each domain.

### 1.2.7 *Portability*

The primary portability objective is that new, JMS only, applications are portable across products within the same messaging domain.

This is in addition to the expected portability of a JMS client across machine architectures and operating systems (when using the same JMS provider).

Although JMS is designed to allow clients to work with existing message formats used in a mixed language application, portability of such clients is not generally achievable (porting a mixed language application from one product to another is beyond the scope of JMS).

### 1.2.8 *What JMS Does Not Include*

JMS does not address the following functionality:

- Load Balancing/Fault Tolerance - Many products provide support for multiple, cooperating clients implementing a critical service. The JMS API does not specify how such clients cooperate to appear to be a single, unified service.
- Error/Advisory Notification - Most messaging products define system messages that provide asynchronous notification of problems or system events to clients. JMS does not attempt to standardize these messages. By following the guidelines defined by JMS, clients can avoid using these messages and thus prevent the portability problems their use introduces.
- Administration - JMS does not define an API for administering messaging products.
- Security - JMS does not specify an API for controlling the privacy and integrity of messages. It also does not specify how digital signatures or keys are distributed to clients. Security is considered to be a JMS provider-specific feature that is configured by an administrator rather than controlled via the JMS API by clients.

- Wire Protocol - JMS does not define a wire protocol for messaging.
- Message Type Repository - JMS does not define a repository for storing message type definitions and it does not define a language for creating message type definitions.

### *1.3 What Is Required by JMS*

The functionality discussed in the specification is required of all JMS providers unless it is explicitly noted otherwise.

Providers of JMS point-to-point functionality are not required to provide publish/subscribe functionality and vice versa.

### *1.4 Relationship to Other JavaSoft Enterprise APIs*

#### *1.4.1 JDBC*

JMS clients may also use JDBC. They may desire to include the use of both JDBC and JMS in the same transaction. In most cases, this will be achieved automatically by implementing these clients as Enterprise JavaBeans. It will also be possible to do this directly with JTA.

#### *1.4.2 JavaBeans*

JavaBeans can use a JMS session to send/receive messages. JMS itself is an API and the interfaces it defines are not designed to be used directly as Java beans.

#### *1.4.3 Enterprise Java Beans*

JMS will be an important resource available to EJB component developers. It can be used in conjunction with other resources like JDBC to implement enterprise services.

The current EJB specification defines beans that are invoked synchronously via method calls from EJB clients. A future release of EJB will add a form of asynchronous bean that is invoked when a JMS client sends it a message.

#### 1.4.4 *Java Transaction (JTA)*

The java transaction package provides a client API for delimiting distributed transactions and an API for accessing a resource's ability to participate in a distributed transaction.

A JMS client may use JTA to delimit distributed transactions; however, this is a function of the transaction environment the client is running in. It is not a feature of JMS per se.

A JMS provider can optionally support distributed transactions via JTA.

#### 1.4.5 *Java Transaction Service (JTS)*

JMS can be used in conjunction with JTS to form distributed transactions that combine message sends and receives with database updates and other JTS aware services. This should be handled automatically when a JMS client is run from within an application server such as an Enterprise JavaBeans server; however, it is also possible for JMS clients to program this explicitly.

#### 1.4.6 *Java Naming and Directory Service (JNDI)*

JMS clients look up configured JMS objects using JNDI. JMS administrators use provider specific facilities for creating and configuring these objects.

This division of work maximizes the portability of clients by delegating provider specific work to the administrator. It also leads to more administrable applications because clients do not need to embed administrative values in their code.

## 2.1 Overview

This chapter describes the environment of message based applications and the role JMS plays in this environment.

## 2.2 What is a JMS Application?

A JMS application is composed of the following parts:

- JMS Clients - These are the Java language programs that send and receive messages.
- Non-JMS Clients - These are clients that use a message systems native client API instead of JMS. If the application predated the availability of JMS it is likely that it will include both JMS and non-JMS clients.
- Messages - Each application defines a set of messages that are used to communicate information between its clients.
- JMS Provider - This is a messaging system that implements JMS in addition to the other administrative and control functionality required of a full featured messaging product.
- Administered Objects - Administered objects are preconfigured JMS objects created by an administrator for the use of clients.

## 2.3 Administration

It is expected that each JMS provider will differ significantly in their underlying messaging technology. It is also expected there will be major differences in how a provider's system is installed and administered.

If JMS clients are to be portable, they must be isolated from these proprietary aspects of a provider. This is done by defining JMS administered objects that are created and customized by a provider's administrator and later used by clients. The client uses them through JMS interfaces that are portable. The administrator creates them using provider-specific facilities.

There are two types of JMS administered objects:

- **ConnectionFactory** - This is the object a client uses to create a connection with a provider.
- **Destination** - This is the object a client uses to specify the destination of messages it is sending and the source of messages it receives.

Administered objects are placed in a JNDI namespace by an administrator. A JMS client typically notes in its documentation the JMS administered objects it requires and how the JNDI names of these objects should be provided to it.

## 2.4 Two Messaging Styles

A JMS application either uses the point-to-point (PTP) or publish-and-subscribe (Pub/Sub) style of messaging. Nothing prevents these styles from being combined in a single application; however, JMS focuses on applications that use one or the other.

JMS defines these two styles because they represent the two dominant approaches to messaging currently in use. Since many messaging systems only support one of these styles, JMS provides a separate domain for each and defines compliance for each domain.

## 2.5 JMS Interfaces

JMS is based on a set of common messaging concepts. Each JMS messaging domain - PTP and Pub/Sub - define their customized set of interfaces for these concepts.

*Table 0-1* Relationship of PTP and Pub/Sub interfaces

JMS Parent	PTP Domain	Pub/Sub Domain
ConnectionFactory	QueueConnectionFactory	TopicConnectionFactory
Connection	QueueConnection	TopicConnection
Destination	Queue	Topic
Session	QueueSession	TopicSession
MessageProducer	QueueSender	TopicPublisher
MessageConsumer	QueueReceiver, QueueBrowser	TopicSubscriber

The following provides a brief definition of these JMS concepts. See the PTP and Pub/Sub chapters for more information.

- ConnectionFactory - an administered object used by a client to create a Connection
- Connection - An active connection to a JMS provider
- Destination - encapsulates the identity of a message destination
- Session - a single threaded context for sending and receiving messages
- MessageProducer - an object created by a Session that is used for sending messages to a destination
- MessageConsumer - an object created by a Session that is used for receiving messages sent to a destination

The term *consume* is used in this document to mean the receipt of a message by a JMS client, i.e. a JMS provider has received a message and has given it to its client. Since JMS supports both synchronous and asynchronous receipt of messages, the term *consume* is used when there is no need to make a distinction between them.

The term *produce* is used as the most general term for sending a message. It means giving a message to a JMS provider for delivery to a destination.

## 2.6 *Developing a JMS Application*

Broadly speaking, a JMS application is one or more JMS clients that exchange messages. The application may also involve non-JMS clients; however, these clients use the JMS provider's native API in place of JMS.

A JMS application can be architected and deployed as a unit. In many cases, JMS clients are added incrementally to an existing application.

The message definitions used by an application may originate with JMS or they may have been defined by the non-JMS part of the application.

### 2.6.1 *Developing a JMS Client*

A typical JMS client executes the following JMS setup procedure:

- Use JNDI to find a `ConnectionFactory` object
- Use JNDI to find one or more `Destination` objects
- Use the `ConnectionFactory` to create a JMS `Connection` with message delivery inhibited
- Use the `Connection` to create one or more JMS `Sessions`
- Use a `Session` and the `Destinations` to create the `MessageProducers` and `MessageConsumers` needed
- Tell the `Connection` to start delivery of messages

At this point a client has the basic JMS setup needed to produce and consume messages.

## 2.7 *Security*

JMS does not provide features for controlling or configuring message integrity or message privacy.

It is expected that many JMS providers will provide such features. It is also expected that configuration of these services will be handled by provider-specific administration tools. Clients will get the proper security configuration as part of the administered objects they use.

## 2.8 Multi-Threading

JMS could have required that all its objects support concurrent use. Since support for concurrent access typically adds some overhead and complexity, the JMS design restricts its requirement for concurrent access to those objects that would naturally be shared by a multi-threaded client. The remainder are designed to be accessed by one logical thread of control at a time.

Table 0-2 JMS objects that support concurrent use

JMS Object	Supports Concurrent Use
Destination	YES
ConnectionFactory	YES
Connection	YES
Session	NO
MessageProducer	NO
MessageConsumer	NO

JMS defines some specific rules that restrict the concurrent use of Sessions. Since they require more knowledge of JMS specifics than we have presented at this point, they will be described later. Here we will describe the rationale for imposing them.

There are two reasons for restricting concurrent access to Sessions. First, Sessions are the JMS entity that supports transactions. It is very difficult to implement transactions that are multi-threaded. Second, Sessions support asynchronous message consumption. It is important that JMS *not* require that client code used for asynchronous message consumption be capable of handling multiple, concurrent messages. In addition, if a Session has been set up with multiple, asynchronous consumers, it is important that the client is not forced to handle the case where these separate consumers are concurrently executing. These restrictions make JMS easier to use for typical clients. More sophisticated clients can get the concurrency they desire by using multiple sessions.



## 2.9 *Triggering Clients*

Some clients are designed to periodically wake up and process messages waiting for them. A message-based application triggering mechanism is often used with this style of client. The trigger is typically a threshold of waiting messages, etc.

JMS does not provide a mechanism for triggering the execution of a client. Some providers may supply such a triggering mechanism via their administrative facilities.

## 2.10 *Request/Reply*

JMS provides the *JMSReplyTo* message header field for specifying the Destination where a reply to a message should be sent. The *JMSCorrelationID* header field of the reply can be used to reference the original request. See Section 3.4, “Message Header Fields” for more information.

In addition, JMS provides a facility for creating temporary queues and topics that can be used as a unique destination for replies.

There are many styles of request/reply supported by enterprise messaging products. From simple ‘one message request yields a one message reply’ to ‘one message request yields streams of messages from multiple respondents’. Rather than architect a specific JMS request/reply abstraction, JMS provides the basic facilities on which many can be built.

For convenience, JMS defines request/reply helper classes (classes written using JMS) for both the PTP and Pub/Sub domains that implement a basic form of request/reply. JMS providers and clients may provide more specialized implementations.

### *3.1 Background*

Enterprise messaging products treat messages as lightweight entities that consist of a header and a body. The header contains fields used for message routing and identification; the body contains the application data being sent.

Within this general form, the definition of a message varies significantly across products. There are major differences in the content and semantics of headers. Some products use a self describing, canonical encoding of message data; others treat data as completely opaque. Some products provide a repository for storing message descriptions that can be used to identify and interpret message content; others don't.

It would be quite difficult for JMS to capture the breadth of this, sometimes conflicting, union of message models.

### *3.2 Goals*

The JMS message model has the following goals:

- Provide a single, unified message API
- Provide an API suitable for creating messages that match the format used by existing, non-JMS applications
- Support the development of heterogeneous applications that span operating systems, machine architectures, and computer languages
- Support messages containing Java objects

- Support messages containing Extensible Markup Language pages (see <http://www.w3.org/XML>).

### 3.3 *JMS Messages*

JMS messages are composed of the following parts:

- Header - All messages support the same set of header fields. Header fields contain values used by both clients and providers to identify and route messages.
- Properties - In addition to the standard header fields, messages provide a built-in facility for adding optional header fields to a message.
  - Application-specific properties - In effect, this provides a mechanism for adding application specific header fields to a message.
  - Standard properties - JMS defines some standard properties that are, in effect, optional header fields.
  - Provider-specific properties - Integrating a JMS client with a JMS provider native client may require the use of provider-specific properties. JMS defines a naming convention for these.
- Body - JMS defines several types of message body which cover the majority of messaging styles currently in use.

### 3.4 *Message Header Fields*

The following subsections describe each JMS message header field. A message's complete header is transmitted to all JMS clients that receive the message. JMS does not define the header fields transmitted to non-JMS clients.

#### 3.4.1 *JMSDestination*

The *JMSDestination* header field contains the destination to which the message is being sent.

When a message is sent this value is ignored. After completion of the send it holds the destination object specified by the sending method.

When a message is received, its destination value must be equivalent to the value assigned when it was sent.

### 3.4.2 *JMSDeliveryMode*

The *JMSDeliveryMode* header field contains the delivery mode specified when the message was sent.

When a message is sent this value is ignored. After completion of the send it holds the delivery mode specified by the sending method.

See Section 4.7, "Message Delivery Mode" for more information.

### 3.4.3 *JMSMessageID*

The *JMSMessageID* header field contains a value that uniquely identifies each message sent by a provider.

When a message is sent, *JMSMessageID* is ignored. When the send method returns it contains a provider-assigned value.

A *JMSMessageID* is a *String* value which should function as a unique key for identifying messages in a historical repository. The exact scope of uniqueness is provider defined. It should at least cover all messages for a specific installation of a provider where an installation is some connected set of message routers.

All *JMSMessageID* values must start with the prefix 'ID:'. Uniqueness of message ID values across different providers is not required.

Since message ID's take some effort to create and increase a message's size, some JMS providers may be able to optimize message overhead if they are given a hint that message ID is not used by an application. *JMS MessageProducer* provides a hint to disable message ID. When a client sets a producer to disable message ID it is saying that it does not depend on the value of message ID for the messages it produces. These messages must either have message ID set to null or, if the hint is ignored, message ID must be set to its normal unique value.

### 3.4.4 *JMSTimestamp*

The *JMSTimestamp* header field contains the time a message was handed off to a provider to be sent. It is not the time the message was actually transmitted because the actual send may occur later due to transactions or other client side queueing of messages.

When a message is sent, *JMSTimestamp* is ignored. When the send method returns it contains a time value somewhere in the interval between the call and the return. It is in the format of a normal Java millis time value.

Since timestamps take some effort to create and increase a message's size, some JMS providers may be able to optimize message overhead if they are given a hint that timestamp is not used by an application. JMS *MessageProducer* provides a hint to disable timestamps. When a client sets a producer to disable timestamps it is saying that it does not depend on the value of timestamp for the messages it produces. These messages must either have timestamp set to zero or, if the hint is ignored, timestamp must be set to its normal value.

### 3.4.5 *JMSCorrelationID*

A client can use the *JMSCorrelationID* header field to link one message with another. A typically use is to link a response message with its request message.

*JMSCorrelationID* can hold one of the following:

- A provider-specific message ID
- An application-specific *String*
- A provider-native *byte[]* value.

Since each message sent by a JMS provider is assigned a message ID value it is convenient to link messages via message ID. All message ID values must start with the 'ID:' prefix.

In some cases, an application (made up of several clients) needs to use an application specific value for linking messages. For instance, an application may use *JMSCorrelationID* to hold a value referencing some external information. Application specified values must not start with the 'ID:' prefix; this is reserved for provider-generated message ID values.

If a provider supports the native concept of correlation ID, a JMS client may need to assign specific *JMSCorrelationID* values to match those expected by non-JMS clients. A *byte[]* value is used for this purpose. JMS providers without native correlation ID values are not required to support *byte[]* values\*. The use of a *byte[]* value for *JMSCorrelationID* is non-portable.

---

\* Their implementation of *setJMSCorrelationIDAsBytes()* and *getJMSCorrelationIDAsBytes()* may throw *java.lang.UnsupportedOperationException*.

### 3.4.6 *JMSReplyTo*

The *JMSReplyTo* header field contains a Destination supplied by a client when a message is sent. It is the destination where a reply to the message should be sent.

Messages sent with a null *JMSReplyTo* value may be a notification of some event or they may just be some data the sender thinks is of interest.

Messages sent with a *JMSReplyTo* value are typically expecting a response. A response may be optional, it is up to the client to decide.

### 3.4.7 *JMSRedelivered*

If a client receives a message with the *JMSRedelivered* indicator set, it is likely, but not guaranteed, that this message was delivered to the client earlier but the client did not acknowledge its receipt at that earlier time. See Section 4.4.13, "Message Acknowledgment" for more information.

This header field has no meaning on send and is left unassigned by the sending method.

### 3.4.8 *JMSType*

The *JMSType* header field contains a message type identifier supplied by a client when a message is sent.

Some JMS providers use a message repository that contains the definition of messages sent by applications. The *type* header field may reference a message's definition in the provider's repository.

JMS does not define a standard message definition repository nor does it define a naming policy for the definitions it contains.

Some messaging systems require that a message type definition for each application message be created and that each message specify its type. In order to work with such JMS providers, JMS clients should assign a value to *JMSType* whether the application makes use of it or not. This insures that it is properly set for those providers that require it.

To insure portability, JMS clients should use symbolic values for *JMSType* that can be configured at installation time to the values defined in the current

providers message repository. If string literals are use they may not be valid type names for some JMS providers.

### 3.4.9 *JMSExpiration*

When a message is sent, its expiration time is calculated as the sum of the time-to-live value specified on the send method and the current GMT. On return from the send method, the message's *JMSExpiration* header field contains this value. When a message is received its *JMSExpiration* header field contains this same value.

If the time-to-live is specified as zero, expiration is set to zero which indicates the message does not expire.

When GMT is later than an undelivered message's expiration time, the message should be destroyed. JMS does not define a notification of message expiration.

Clients should not receive messages that have expired; however, JMS does not guarantee that this will not happen.

### 3.4.10 *JMSPriority*

The *JMSPriority* header field contains the message's priority.

When a message is sent this value is ignored. After completion of the send it holds the value specified by the method sending the message.

JMS defines a ten level priority value with 0 as the lowest priority and 9 as the highest. In addition, clients should consider priorities 0-4 as gradations of *normal* priority and priorities 5-9 as gradations of *expedited* priority.

JMS does not require that a provider strictly implement priority ordering of messages; however, it should do its best to deliver expedited messages ahead of normal messages.

### 3.4.11 How Message Header Values Are Set

Table 0-3 Message Header Field Value Sent

Header Fields	Set By
JMSDestination	Send Method
JMSDeliveryMode	Send Method
JMSExpiration	Send Method
JMSPriority	Send Method
JMSMessageID	Send Method
JMSTimestamp	Send Method
JMSCorrelationID	Client
JMSReplyTo	Client
JMSType	Client
JMSRedelivered	Provider

### 3.4.12 Overriding Message Header Fields

JMS permits an administrator to configure JMS to override the client specified values for *JMSDeliveryMode*, *JMSExpiration* and *JMSPriority*. If this is done, the header field value must reflect the administratively specified value.

JMS does not define specifically how an administrator overrides these header field values. A JMS provider is not required to support this administrative option.

## 3.5 Message Properties

In addition to the header fields defined here, *Message* contains a built-in facility for supporting property values. In effect, this provides a mechanism for adding optional header fields to a message.

Properties allow a client, via message selectors (see Section 3.8, "Message Selection"), to have a JMS provider select messages on its behalf using application-specific criteria.



### 3.5.1 *Property Names*

Property names must obey the rules for a message selector identifier. See Section 3.8.1.1, “Message Selector Syntax” for more information.

### 3.5.2 *Property Values*

Property values can be *boolean*, *byte*, *short*, *int*, *long*, *float*, *double*, and *String*.

### 3.5.3 *Using Properties*

Property values are set prior to sending a message. When a client receives a message, its properties are in read-only mode. If a client attempts to set properties at this point, a *MessageNotWriteableException* is thrown.

A property value may duplicate a value in a message’s body or it may not. Although JMS does not define a policy for what should or should not be made a property, application developers should note that JMS providers will likely handle data in a message’s body more efficiently than data in a message’s properties. For best performance, applications should only use message properties when they need to customize a message’s header. The primary reason for doing this is to support customized message selection.

See Section 3.8, “Message Selection” for more information about JMS message properties.

### 3.5.4 *Property Value Conversion*

Properties support the following conversion table. The marked cases must be supported. The unmarked cases must throw the JMS *MessageFormatException*. The *String* to numeric conversions must throw the *java.lang.NumberFormatException* if the numeric’s *valueOf()* method does not accept the *String* value as a valid representation. Attempting to read a null value as a Java primitive type must be treated as calling the primitive’s corresponding *valueOf(String)* conversion method with a null value.

Table 0-4 A value set as the row type can be read as the column type

	boolean	byte	short	int	long	float	double	String
boolean	X							X
byte		X	X	X	X			X
short			X	X	X			X
int				X	X			X
long					X			X
float						X	X	X
double							X	X
String	X	X	X	X	X	X	X	X

### 3.5.5 Property Values as Objects

In addition to the type-specific set/get methods for properties, JMS provides the *setObjectProperty/getObjectProperty* methods. These support the same set of property types using the objectified primitive values. Their purpose is to allow the decision of property type to be made at execution time rather than at compile time. They support the same property value conversions.

The *setObjectProperty* method accepts values of *Boolean*, *Byte*, *Short*, *Integer*, *Long*, *Float*, *Double* and *String*. An attempt to use any other class must throw a *JMS MessageFormatException*.

The *getObjectProperty* method only returns values of *null*, *Boolean*, *Byte*, *Short*, *Integer*, *Long*, *Float*, *Double* and *String*. A *null* value is returned if a property by the specified name does not exist.

### 3.5.6 Property Iteration

The order of property values is not defined. To iterate through a message's property values, use *getPropertyNames* to retrieve a property name enumeration and then use the various property get methods to retrieve their values.

The *getPropertyNames* method does not return the names of the JMS standard header fields.

### 3.5.7 *Clearing a Message's Property Values*

A message's properties are deleted by the *clearProperties* method. This leaves the message with an empty set of properties. New property entries can then be both created and read.

Clearing a message's property entries does not clear the value of its body.

JMS does not provide a way to remove an individual property entry once it has been added to a message.

### 3.5.8 *Non-existent Properties*

Getting a property value for a name which has not been set is handled as if the property exists with a null value.

### 3.5.9 *JMS Defined Properties*

JMS reserves the 'JMSX' property name prefix for JMS defined properties. The full set of these properties is provided below. New JMS defined properties may be added in later versions of JMS.

Unless noted otherwise, support for these properties is optional. The *String[] ConnectionMetaData.getJMSXPropertyNames()* method returns the names of the JMSX properties supported by a connection.

JMSX properties may be referenced in message selectors whether or not they are supported by a connection. If they are not present in a message, they are treated like any other absent property.

The existence, in a particular message, of JMS defined properties that are set by a JMS Provider depends on how a particular provider controls use of the

property. It may choose to include them in some messages and omit them in others depending on administrative or other criteria.

Table 0-5

Name	Type	Set By	Use
JMSXUserID	String	Provider on Send	The identity of the user sending the message
JMSXAppID	String	Provider on Send	The identity of the application sending the message
JMSXDeliveryCount	int	Provider on Receive	The number of message delivery attempts; the first is 1, the second 2,...
JMSXGroupID	String	Client	The identity of the message group this message is part of
JMSXGroupSeq	int	Client	The sequence number of this message within the group; the first message is 1, the second 2,...
JMSXProducerTXID	String	Provider on Send	The transaction identifier of the transaction within which this message was produced
JMSXConsumerTXID	String	Provider on Receive	The transaction identifier of the transaction within which this message was consumed
JMSXRcvTimestamp	long	Provider on Receive	The time JMS delivered the message to the consumer
JMSXState	int	Provider	Assume there exists a message warehouse that contains a separate copy of each message sent to each consumer and that these copies exist from the time the original message was sent. Each copy's state is one of: 1(waiting), 2(ready), 3(expired) or 4(retained) Since state is of no interest to producers and consumers it is not provided to either. It is only of relevance to messages looked up in a warehouse and JMS provides no API for this.

JMSX properties ‘set by provider on send’ are available to both the producer and the consumers of the message. JSMX properties ‘set by provider on receive’ are only available to the consumers.

*JMSXGroupID* and *JMSXGroupSeq* are standard properties clients should use if they want to group messages. All providers must support them.

The case of these JMSX property names must be as defined in the table above.

Unless specifically noted, the values and semantics of the JMSX properties are undefined.

### 3.5.10 *Provider-Specific Properties*

JMS reserves the ‘JMS\_<vendor\_name>’ property name prefix for provider-specific properties. Each provider defines their own value of <vendor\_name>. This is the mechanism a JMS provider uses to make its special per message services available to a JMS client.

*The purpose of provider-specific properties is to provide special features needed to support JMS use with provider-native clients. They should not be used for JMS to JMS messaging.*

## 3.6 *Message Acknowledgment*

All JMS messages support the *acknowledge* method for use when a client has specified that a JMS consumer’s messages are to be explicitly acknowledged.

If a client uses automatic acknowledgment, calls to *acknowledge* are ignored.

See Section 4.4.13, “Message Acknowledgment” for more information.

## 3.7 *The Message Interface*

The *Message* interface is the root interface for all JMS messages. It defines the JMS message header fields, property facility and the *acknowledge* method used for all messages.

## 3.8 Message Selection

Many messaging applications need to filter and categorize the messages they produce.

In the case where a message is sent to a single receiver, this can be done with reasonable efficiency by putting the criteria in the message and having the receiving client discard the ones it's not interested in.

When a message is broadcast to many clients, it becomes useful to place the criteria into the message header so that it is visible to the JMS provider. This allows the provider to handle much of the filtering and routing work that would otherwise need to be done by the application.

JMS provides a facility that allows clients to delegate message selection to their JMS provider. This simplifies the work of the client and allows JMS providers to eliminate the time and bandwidth they would otherwise waste sending messages to clients that don't need them.

Clients attach application-specific selection criteria to messages using message properties. Clients specify message selection criteria using JMS *message selector* expressions.

### 3.8.1 Message Selector

A JMS message selector allows a client to specify, by message header, the messages it's interested in. Only messages whose headers and properties match the selector are delivered. The semantics of *not delivered* differ a bit depending on the MessageConsumer being used. See Section 5.8, "QueueReceiver" and Section 6.11, "TopicSubscriber" for more details.

Message selectors cannot reference message body values.

A message selector matches a message when the selector evaluates to true when the message's header field and property values are substituted for their corresponding identifiers in the selector.

### 3.8.1.1 Message Selector Syntax

A message selector is a *String* whose syntax is based on a subset of the SQL92\* conditional expression syntax.

The order of evaluation of a message selector is from left to right within precedence level. Parentheses can be used to change this order.

Predefined selector literals and operator names are written here in upper case; however, they are case insensitive.

A selector can contain:

- Literals:
  - A string literal is enclosed in single quotes with an included single quote represented by doubled single quote such as 'literal' and 'literal''s'; like Java *String* literals these use the unicode character encoding.
  - An exact numeric literal is a numeric value without a decimal point such as 57, -957, +62; numbers in the range of Java *long* are supported. Exact numeric literals use the Java integer literal syntax.
  - An approximate numeric literal is a numeric value in scientific notation such as 7E3, -57.9E2 or a numeric value with a decimal such as 7., -95.7, +6.2; numbers in the range of Java *double* are supported. Approximate literals use the Java floating point literal syntax.
  - The boolean literals *TRUE* and *FALSE*.
- Identifiers:
  - An identifier is an unlimited length character sequence that must begin with a Java identifier start character and all following characters must be Java identifier part characters. An identifier start character is any character for which the method *Character.isJavaIdentifierStart* returns true. This includes '\_' and '\$'. An identifier part character is any character for which the method *Character.isJavaIdentifierPart* returns true.
  - Identifiers cannot be the names *NULL*, *TRUE*, or *FALSE*.
  - Identifiers cannot be *NOT*, *AND*, *OR*, *BETWEEN*, *LIKE*, *IN*, and *IS*.
  - Identifiers are either header field references or property references.

---

\* See X/Open CAE Specification Data Management: Structured Query Language (SQL), Version 2, ISBN: 1-85912-151-9 March 1996.

- Identifiers are case sensitive.
- Message header field references are restricted to *JMSDeliveryMode*, *JMSPriority*, *JMSMessageID*, *JMSTimestamp*, *JMSCorrelationID*, and *JMSType*. *JMSMessageID*, *JMSCorrelationID*, and *JMSType* values may be *null* and if so are treated as a NULL value.
- Any name beginning with 'JMSX' is a JMS defined property name.
- Any name beginning with 'JMS\_' is a provider-specific property name.
- Any name that does not begin with 'JMS' is an application-specific property name. If a property is referenced that does not exist in a message its value is NULL. If it does exist, its value is the corresponding property value.
- Whitespace is the same as that defined for Java: space, horizontal tab, form feed and line terminator.
- Expressions:
  - A selector is a conditional expression; a selector that evaluates to true matches; a selector that evaluates to false or unknown does not match.
  - Arithmetic expressions are composed of themselves, arithmetic operations, identifiers with numeric values and numeric literals.
  - Conditional expressions are composed of themselves, comparison operations, logical operations, identifiers with boolean values and boolean literals.
- Standard bracketing () for ordering expression evaluation is supported.
- Logical operators in precedence order: NOT, AND, OR
- Comparison operators: =, >, >=, <, <=, <> (not equal)
  - Only *like* type values can be compared. One exception is that it is valid to compare exact numeric values and approximate numeric values (the type conversion required is defined by the rules of Java numeric promotion). If the comparison of non-like type values is attempted, the selector is always false.
  - *String* and *Boolean* comparison is restricted to = and <>. Two strings are equal if and only if they contain the same sequence of characters.
- Arithmetic operators in precedence order:
  - +, - unary



- \*, / multiplication and division
- +, - addition and subtraction
- Arithmetic operations must use Java numeric promotion.
- *arithmetic-expr1* [NOT] BETWEEN *arithmetic-expr2* and *arithmetic-expr3* comparison operator
  - age BETWEEN 15 and 19 is equivalent to age >= 15 AND age <= 19
  - age NOT BETWEEN 15 and 19 is equivalent to age < 15 OR age > 19
- *identifier* [NOT] IN (*string-literal1*, *string-literal2*,...) comparison operator where *identifier* has a *String* or NULL value.
  - Country IN (' UK', 'US', 'France') is true for 'UK' and false for 'Peru' it is equivalent to the expression (Country = ' UK') OR (Country = ' US') OR (Country = ' France')
  - Country NOT IN (' UK', 'US', 'France') is false for 'UK' and true for 'Peru' it is equivalent to the expression NOT ((Country = ' UK') OR (Country = ' US') OR (Country = ' France'))
  - If *identifier* of an IN or NOT IN operation is NULL the value of the operation is unknown.
- *identifier* [NOT] LIKE *pattern-value* [ESCAPE *escape-character*] comparison operator, where *identifier* has a *String* value; *pattern-value* is a string literal where '\_' stands for any single character; '%' stands for any sequence of characters (including the empty sequence); and all other characters stand for themselves. The optional *escape-character* is a single character string literal whose character is used to escape the special meaning of the '\_' and '%' in *pattern-value*.
  - *phone* LIKE '12%3' is true for '123' '12993' and false for '1234'
  - *word* LIKE 'l\_se' is true for 'lose' and false for 'loose'
  - *underscored* LIKE '\\_%' ESCAPE '\' is true for '\_foo' and false for 'bar'
  - *phone* NOT LIKE '12%3' is false for '123' and '12993' and true for '1234'
  - If *identifier* of a LIKE or NOT LIKE operation is NULL the value of the operation is unknown.
- *identifier* IS NULL comparison operator tests for a null header field value, or a missing property value.
  - *prop\_name* IS NULL

- *identifier* IS NOT NULL comparison operator tests for the existence of a non null header field value or property value.
  - *prop\_name* IS NOT NULL

JMS providers are required to verify the syntactic correctness of a message selector at the time it is presented. A method providing a syntactically incorrect selector must result in a *JMS InvalidSelectorException*.

The following message selector selects messages with a message type of *car* and color of *blue* and weight greater than 2500 lbs:

```
"JMSType = 'car' AND color = 'blue' AND weight > 2500"
```

### 3.8.1.2 Null Values

As noted above, header fields and property values may be NULL. The evaluation of selector expressions containing NULL values is defined by SQL 92 NULL semantics. A brief description of these semantics is provided here.

SQL treats a NULL value as unknown. Comparison or arithmetic with an unknown value always yields an unknown value.

The IS NULL and IS NOT NULL operators convert an unknown header or property value into the respective TRUE and FALSE values.

The boolean operators use three valued logic as defined by the following tables:

*Table 0-6* The definition of the AND operator

AND	T	F	U
T	T	F	U
F	F	F	F
U	U	F	U

:

*Table 0-7* The definition of the OR operator

OR	T	F	U
T	T	T	T
F	T	F	U
U	T	U	U

:

*Table 0-8* The definition of the NOT operator

NOT	
T	F
F	T
U	U

### 3.8.1.3 *Special Notes*

When used in a message selector *JMSDeliveryMode* is treated as having the values 'PERSISTENT' and 'NON\_PERSISTENT'.

Date and time values should use the standard Java long millis value. When including a date or time literal in a message selector, it should be an integer literal for a millis value. The standard way to produce millis values is to use *java.util.Calendar*.

Although SQL supports fixed decimal comparison and arithmetic, JMS message selectors do not. This is the reason for restricting exact numeric literals to those without a decimal (and the addition of numerics with a decimal as an alternate representation for an approximate numeric values).

SQL comments are not supported.

## 3.9 *Access to Sent Messages*

After sending a message, a client may retain and modify it without affecting the message that has been sent. The same message object may be sent multiple times.

During the execution of its sending method, the message must not be changed by the client. If it is modified, the result of the send is undefined.

### 3.10 *Changing the Value of a Received Message*

When a message is received, its header field values can be changed; however, its property entries and its body are read-only as specified in this chapter.

The rationale for the read-only restriction is that it gives JMS Providers more freedom in how they implement the management of received messages. For instance, they may return a message object that references property entries and body values that reside in an internal message buffer rather than being forced to make a copy.

### 3.11 *JMS Message Body*

JMS provides five forms of message body. Each form is defined by a message interface:

- `StreamMessage` - a message whose body contains a stream of Java primitive values. It is filled and read sequentially.
- `MapMessage` - a message whose body contains a set of name-value pairs where names are *Strings* and values are Java primitive types. The entries can be accessed sequentially by enumerator or randomly by name. The order of the entries is undefined.
- `TextMessage` - a message whose body contains a *java.lang.String*. The inclusion of this message type is based on our presumption that *String* messages will be used extensively. One reason for this is that XML will likely become a popular mechanism for representing the content of JMS messages.
- `ObjectMessage` - a message that contains a `Serializable` Java object. If a collection of Java objects is needed, one of the collection classes provided in JDK 1.2 can be used.
- `BytesMessage` - a message that contains a stream of uninterpreted bytes. This message type is for literally encoding a body to match an existing message format. In many cases, it will be possible to use one of the other, self-defining, message types instead. *Although JMS allows the use of message*

*properties with byte messages it is typically not done since the inclusion of properties may affect the format.*

### 3.11.1 Clearing a Message Body

The *clearBody* method of *Message* resets the value of the message body to the 'empty' initial message value as set by the message type's *create* method provided by *Session*. Clearing a message's body does not clear its property entries.

### 3.11.2 Read-Only Message Body

When a message is received its body is read only. If an attempt is made to change the body a *MessageNotWritableException* must be thrown. If its body is subsequently cleared, the body is in the same state as an empty body in a newly created message.

### 3.11.3 Conversions Provided by *StreamMessage* and *MapMessage*

Both *StreamMessage* and *MapMessage* support the same set of primitive data types.

The types can be read or written explicitly using methods for each type. They may also be read or written generically as objects. For instance, a call to *MapMessage.setInt("foo", 6)* is equivalent to *MapMessage.setObject("foo", new Integer(6))*. Both forms are provided because the explicit form is convenient for static programming and the object form is needed when types are not known at compile time.

Both *StreamMessage* and *MapMessage* support the following conversion table. The marked cases must be supported. The unmarked cases must throw a *JMS MessageFormatException*. The *String* to numeric conversions must throw a *java.lang.NumberFormatException* if the numeric's *valueOf()* method does not accept the *String* value as a valid representation.

*StreamMessage* and *MapMessage* must implement the *String* to boolean conversion as specified by the *valueOf(String)* method of *Boolean* as defined by the Java language.

Attempting to read a null value as a Java primitive type must be treated as calling the primitive's corresponding *valueOf(String)* conversion method with a

null value. Since *char* does not support a *String* conversion, attempting to read a null value as a *char* must throw *NullPointerException*.

Getting a *MapMessage* field for a field name which has not been set is handled as if the field exists with a null value.

If a read method of *StreamMessage* or *BytesMessage* throws a *MessageFormatException* or *NumberFormatException* the current position of the read pointer must not be incremented. A subsequent read must be capable of recovering from the exception by rereading the data as a different type.

Table 0-9 A value written as the row type can be read as the column type

	boolean	byte	short	char	int	long	float	double	String	byte[]
boolean	X								X	
byte		X	X		X	X			X	
short			X		X	X			X	
char				X					X	
int					X	X			X	
long						X			X	
float							X	X	X	
double								X	X	
String	X	X	X		X	X	X	X	X	
byte[]										X

### 3.11.4 Messages for Non-JMS Clients

A number of enterprise messaging systems support some form of self-defining stream and/or map native message type. Although clients could use *BytesMessages* to construct native messages of this form, JMS provides the *StreamMessage* and *MapMessage* types as a more convenient API.

For instance, when a client is using a JMS provider that supports a native map message; and, it wishes to send a map message that can be read by both JMS and native clients, it uses a *MapMessage*. When the message is sent, the provider translates it into its native form. Native clients can then receive it. If a JMS provider receives it, the provider translates it back into a *MapMessage*.

Even when a new JMS application with newly defined messages is written, the application may choose to use *StreamMessage* and *MapMessage* to insure that later, non-JMS clients will be able to read them.

If a JMS client sends a *StreamMessage* or *MapMessage*, it must be translated by a receiving JMS provider into an equivalent *StreamMessage* or *MapMessage*. When passed between JMS clients, a message must always retain its full form. For instance, a message sent as *MapMessage* must not arrive at a JMS client as a *BytesMessage*.

If a JMS provider receives a message created by a native client, the provider should do its best to transform it into the ‘best’ JMS message type. For instance, if it is a native stream message it should be transformed into a *StreamMessage*. If this is not possible, the provider is always able to transform it into a *BytesMessage*.

### 3.12 Provider Implementations of JMS Message Interfaces

JMS provides a set of message interfaces that define the JMS message model. It does not provide implementations of these interfaces.

Each JMS provider provides its own implementation of its Session’s message creation methods. This allows a provider to use message implementations that are tailored to its needs.

A provider must be prepared to accept, from a client, a message whose implementation is *not* one of its own. A message with a ‘foreign’ implementation may not be handled as efficiently as a provider’s own implementation; however, they must be handled.

The JMS message interfaces provide write/set methods for setting object values in a message body and message properties. All of these methods must be implemented to copy their input objects into the message. The value of an input object is allowed to be null and will return null when accessed. One exception to this is that *BytesMessage* does not support the concept of a null stream and attempting to write a null into it must throw *java.lang.NullPointerException*.

The JMS message interfaces provide read/get methods for accessing objects in a message body and message properties. All of these methods must be implemented to return a copy of the accessed message objects.

### 4.1 Overview

This chapter describes the JMS facilities that are shared by both the PTP and Pub/Sub domains.

### 4.2 Administered Objects

JMS administered objects are objects containing JMS configuration information that are created by a JMS administrator and later used by JMS clients. They make it practical to administer JMS applications in the enterprise.

*Although the interfaces for administered objects do not explicitly depend on JNDI, JMS establishes the convention that JMS clients find them by looking them up in a namespace using JNDI.*

An administrator can place an administered object anywhere in a namespace. JMS does not define a naming policy.

This strategy of partitioning JMS and administration provides several benefits:

- It hides provider-specific configuration details from JMS clients.
- It abstracts JMS administrative information into Java objects that are easily organized and administered from a common management console.
- Since there will be JNDI providers for all popular naming services, this means JMS providers can deliver one implementation of administered objects that will run everywhere.



An administered object should not hold on to any remote resources. Its lookup should not use remote resources other than those used by JNDI itself.

Clients should think of administered objects as local Java objects. Looking them up should not have any hidden side effects or use surprising amounts of local resources.

JMS defines two administered objects, *Destination* and *ConnectionFactory*.

It is expected that JMS providers will provide the tools an administrator needs to create and configure administered objects in a JNDI namespace. JMS provider implementations of administered objects should be both *javax.naming.Referenceable* and *java.io.Serializable* so that they can be stored in all JNDI naming contexts. In addition, it is recommended that these implementations follow the JavaBeans™ design patterns.

### 4.2.1 *Destination*

JMS does not define a standard address syntax. Although this was considered, it was decided that the differences in address semantics between existing enterprise messaging products was too wide to bridge with a single syntax. Instead, JMS defines the *Destination* object which encapsulates provider-specific addresses.

Since *Destination* is an administered object it may also contain provider-specific configuration information in addition to its address.

JMS also supports a client's use of provider-specific address names. See Section 4.4.4, "Creating Destinations" for more information.

*Destination* objects support concurrent use.

### 4.2.2 *ConnectionFactory*

A *ConnectionFactory* encapsulates a set of connection configuration parameters that has been defined by an administrator. A client uses it to create a *Connection* with a JMS provider.

*ConnectionFactory* objects support concurrent use.

## 4.3 *Connection*

A *JMS Connection* is a client's active connection to its JMS provider. It will typically allocate provider resources outside the Java virtual machine.

*Connections* support concurrent use.

A *Connection* serves several purposes:

- It encapsulates an open connection with a JMS provider. It typically represents an open TCP/IP socket between a client and a provider's service daemon.
- Its creation is where client authenticating takes place.
- It can specify a unique client identifier.
- It creates *Sessions*.
- It provides *ConnectionMetaData*.
- It supports an optional *ExceptionListener*.

Due to the authentication and communication setup done when a *Connection* is created, a *Connection* is a relatively heavy-weight JMS object. Most clients will do all their messaging with a single *Connection*. Other more advanced applications may use several *Connections*. JMS does not architect a reason for using multiple connections (other than when a client acts as a gateway between two different providers); however, there may be operational reasons for doing so.

### 4.3.1 *Authentication*

When creating a connection, a client may specify their credentials as name/password.

If no credentials are specified, the current thread's credentials are used. At this point, the JDK does not define the concept of a thread's default credentials; however, it is likely this will be defined in the near future. For now, the identity of the user under which the JMS client is running should be used.

### 4.3.2 *Client Identifier*

The preferred way to assign a client's client identifier is for it to be configured in a client-specific *ConnectionFactory* and transparently assigned to the

connection it creates. Alternatively, a client can set a connection's client identifier using a provider-specific value. The facility to explicitly set a connection's client identifier is not a mechanism for overriding the identifier that has been administratively configured. It is provided for the case where no administratively specified identifier exists. If one does exist, an attempt to 'change' it by setting it must throw a *IllegalStateException*.

If a client explicitly does the set it must do this immediately after creating the connection and before any other action on the connection is taken. After this point, setting the client identifier is a programming error that should throw an *IllegalStateException*.

The purpose of client identifier is to associate a connection and its objects with a state maintained on behalf of the client by a provider. By definition, the client state identified by a client identifier can only be 'in use' by one client at a time. A JMS provider must prevent concurrently executing clients from using it.

This prevention may take the form of *JMSEExceptions* thrown when such use is attempted; it may result in the offending client being blocked; or some other solution. A JMS provider must insure that such attempted 'sharing' of an individual client state does not result in messages being lost or doubly processed.

The only individual client state identified by JMS is that required to support durable subscriptions, see Section 6.3, "Durable Subscription" for more information.

### 4.3.3 Connection Setup

A JMS client typically creates a *Connection*; one or more *Sessions*; and a number of *MessageProducers* and *MessageConsumers*. When a *Connection* is created it is in *stopped* mode. That means that no messages are being delivered to it.

It is typical to leave the *Connection* in stopped mode until setup is complete. At that point the *Connection's start()* method is called and messages begin arriving at the *Connection's* consumers. This setup convention minimizes any client confusion that may result from asynchronous message delivery while the client is still in the process of setting itself up.

A *Connection* can immediately be started and the setup can be done afterwards. Clients that do this must be prepared to handle asynchronous message delivery while they are still in the process of setting up.

A *MessageProducer* can send messages while a *Connection* is stopped.

It is important to note that clients rely on the fact that no messages are delivered by a connection until it has been started. JMS Providers must insure that this is the case.

#### 4.3.4 *Pausing Delivery of Incoming Messages*

A connection's delivery of incoming messages can be temporarily stopped using its *stop()* method. It can be restarted using its *start()* method. When stopped, delivery to all the connection's *MessageConsumers* is inhibited: synchronous receive's block and messages are not delivered to *MessageListeners*.

Stopping a connection has no affect on its ability to send messages. Stopping a stopped connection and starting a started connection is ignored.

A *stop* method call must not return until delivery of messages has paused. This means a client can rely on the fact that none of its message listeners will be called and all threads of control waiting for receive to return will not return with a message until the connection is restarted. The receive timers for a stopped connection continue to advance so receives may time out and return a null message while the connection is stopped.

If *MessageListeners* are running when *stop* is invoked, *stop* must wait until all of them have returned before it may return. While these *MessageListeners* are completing they must have the full services of the connection available to them.

#### 4.3.5 *Closing a Connection*

Since a provider typically allocates significant resources outside the JVM on behalf of a connection, clients should close them when they are not needed. Relying on garbage collection to eventually reclaim these resources may not be timely enough.

A close terminates all pending message receives on the connection's session's consumers. The receives may return with a message or null depending on whether there was a message or not available at the time of the close.

Note that in this case, the message consumer will likely get an exception if it is attempting to use the facilities of the now closed connection while processing its last message. A developer must take this 'last message' case into account

when writing a message consumer. It bears repeating that the message consumer cannot rely on a null return value to indicate this ‘last message’ case.

If one or more of the connection’s session’s message listeners is processing a message at the point connection close is invoked, all the facilities of the connection and it’s sessions must remain available to those listeners until they return control to the JMS provider.

When connection close is invoked it should not return until message processing has been orderly shut down. This means that all message listeners that may have been running have returned and that all pending receives have returned.

If a connection is closed, there is no need to close its constituent objects. The connection close is sufficient to signal the JMS provider that all resources for the connection should be released.

Closing a connection must rollback the transactions in progress on its transacted sessions\*. Closing a connection does NOT force an acknowledge of client acknowledged sessions. Invoking the *acknowledge* method of a received message from a closed connection’s sessions must throw an *IllegalStateException*. These semantics insure that closing a connection does not cause messages to be lost for queues and durable subscriptions which require reliable processing by a subsequent execution of their JMS client.

Once a connection has been closed an attempt to use it or its sessions or their message consumers and producers must throw an *IllegalStateException* (calls to the *close* method of these objects must be ignored). It is valid to continue to use message objects created or received via the connection with the exception of a received message’s *acknowledge* method.

Closing a closed connection must NOT throw an exception.

### 4.3.6 Sessions

A *Connection* is a factory for *Sessions* that use its underlying connection to a JMS provider for producing and consuming messages.

---

\* The term ‘transacted session’ refers to the case where a session’s commit and rollback methods are used to demarcate a transaction local to the session. In the case where a session’s work is coordinated by an external transaction manager, a session’s commit and rollback methods are not used and the result of a closed session’s work is determined later by the transaction manager.

### 4.3.7 *ConnectionMetaData*

A *Connection* provides a *ConnectionMetaData* object. This object provides the latest version of JMS supported by the provider as well as the providers product name and version.

It also provides a list of the JMS defined property names supported by the connection.

### 4.3.8 *ExceptionListener*

If a JMS provider detects a problem with a connection it will inform the connection's *ExceptionListener* if one has been registered. It does this by calling the listener's *onException()* method passing it a *JMSException* describing the problem.

This allows a client to be asynchronously notified of a problem. Some connections only consume messages so they would have no other way to learn their connection has failed.

A *Connection* serializes execution of its *ExceptionListener*.

A JMS provider should attempt to resolve connection problems itself prior to notifying the client of them.

The exceptions delivered to *ExceptionListener* are those which don't have any other place to be reported. If an exception is thrown on a JMS call it, by definition, must not be delivered to an *ExceptionListener* (i.e. *ExceptionListener* is not for the purpose of monitoring all exceptions thrown by a connection).

## 4.4 *Session*

A JMS *Session* is a single threaded context\* for producing and consuming messages. Although it may allocate provider resources outside the Java virtual machine, it is considered a light-weight JMS object.

A *Session* serves several purposes:

\* There are no restrictions on the number of threads that can use a *Session* object or those it creates. The restriction is that the resources of a *Session* should not be used concurrently by multiple threads. It is up to the user to insure that this concurrency restriction is met. The simplest way to do this is to use one thread. In the case of asynchronous delivery, use one thread for setup in stopped mode and then start asynchronous delivery. In more complex cases the user must provide explicit synchronization.

- It is a factory for its *MessageProducers* and *MessageConsumers*.
- It is a factory for temporary destinations.
- It provides a way to create *Destination* objects for those clients that need to dynamically manipulate provider-specific destination names.
- It supplies provider-optimized message factories.
- It supports a single series of transactions that combine work spanning this session's producers and consumers into atomic units.
- A *Session* defines a serial order for the messages it consumes and the messages it produces.
- A *Session* retains messages it consumes until they have been acknowledged.
- A *Session* serializes execution of *MessageListeners* registered with it.

#### 4.4.1 Closing a Session

Since a provider may allocate some resources on behalf of a session outside the JVM, clients should close them when they are not needed. Relying on garbage collection to eventually reclaim these resources may not be timely enough. The same is true for the *MessageProducers* and *MessageConsumers* created by a session.

Session close terminates all message processing on the session. It must handle the shutdown of pending receives by the session's consumers or a running message listener as described in Section 4.3.5, "Closing a Connection".

Session close is the only session method that may be invoked from a thread of control separate from the one which is currently controlling the session.

When session close is invoked it should not return until its message processing has been orderly shut down. This means that none of its message listeners are running and that if there is a pending receive it has returned with either null or a message.

When a session is closed there is no need to close its constituent message producers and consumers. The session close is sufficient to signal the JMS provider that all resources for the session should be released.

Closing a transacted session must rollback its transaction in progress. Closing a client acknowledged session does NOT force an acknowledge.

Once a session has been closed an attempt to use it or its message consumers and producers must throw an *IllegalStateException* (calls to the *close* method of these objects must be ignored). It is valid to continue to use message objects created or received via the session with the exception of a received message's *acknowledge* method.

Closing a closed session must NOT throw an exception.

#### 4.4.2 *MessageProducer and MessageConsumer Creation*

A session can create and service multiple *MessageProducers* and *MessageConsumers*. See Section 4.5, “*MessageConsumer*” and Section 4.6, “*MessageProducer*” for information on their creation and use.

Although a session may create multiple producers and consumers, they are restricted to serial use. In effect, only a single logical thread of control can use them. This is explained in more detail later.

#### 4.4.3 *Creating TemporaryDestinations*

Although sessions are used to create temporary destinations, this is only for convenience. Their scope is actually the entire connection. Their lifetime is that of their connection and any of the connection's sessions are allowed to create a *MessageConsumer* for them.

*TemporaryDestinations* are destinations that are system generated uniquely for their connection. Only their own connection is allowed to create *MessageConsumers* for them.

One typical use for a *TemporaryDestination* is as the *JMSReplyTo* destination for service requests.

Each *TemporaryDestination* object is unique. It cannot be copied.

Since *TemporaryDestinations* may allocate resources outside the JVM they should be deleted if they are no longer needed. They will be automatically deleted when they are garbage collected or when their connection is closed.

#### 4.4.4 *Creating Destinations*

Most clients will use *Destinations* that are JMS administered objects that they have looked up via JNDI. This is the most portable approach.



Some specialized clients may need to create *Destinations* by dynamically manufacturing one using a provider specific destination name. Sessions provide a JMS provider-specific method for doing this.

#### 4.4.5 *Optimized Message Implementations*

A session provides message create methods that use provider-optimized implementations. This allows a provider to minimize its overhead for handling messages.

Sessions must be capable of sending all JMS messages regardless of how they may be implemented.

#### 4.4.6 *Conventions for Using a Session*

Sessions are designed for serial use by one thread at a time. The only exception to this occurs during the orderly shutdown of the session or its connection. See Section 4.3.5, “Closing a Connection” and Section 4.4.1, “Closing a Session” for further details.

One typical use is to have a thread block on a synchronous *MessageConsumer* until a message arrives. The thread may then use one or more of the session’s *MessageProducers*.

It is erroneous for a client to use a thread of control to attempt to synchronously receive a message if there is already a client thread of control waiting to receive a message in the same session.

Another typical use is to have one thread set up a session by creating its producers and one or more asynchronous consumers. In this case, the message producers are exclusively for the use of the consumer’s message listeners. Since the session serializes execution of its consumer’s *MessageListeners*, they can safely share the resources of their session.

If a connection is left in stopped mode while its sessions are being set up, a client does not have to deal with messages arriving before the client is fully prepared to handle them. This is the preferred strategy because it eliminates the possibility of unanticipated conflicts between setup and message processing. It is possible to create and set up a session while a connection is receiving messages. In this case, more care is required to insure that a session’s *MessageProducers*, *MessageConsumers* and *MessageListeners* are created in the right order. For instance, a bad order may cause a *MessageListener* to use a

*MessageProducer* that has yet to be created; or, messages may arrive in the wrong order due to the order *MessageListeners* are registered.

If a client desires to have one thread producing messages while others consume them, the client should use a separate session for its producing thread.

Once a connection has been started, all its sessions with a registered message listener are dedicated to the thread of control that delivers messages to them. It is erroneous for client code to use such a session from another thread of control. The only exception to this is the use of the session or connection close method.

One consequence of the session's single-thread-of-control restriction is that a session with message listeners cannot also be used to synchronously receive messages. Either the session is dedicated to the thread of control used for delivery to message listeners or it is dedicated to a thread of control initiated by client code. It is erroneous to attempt to combine both in the same session.

Another consequence is that a connection must be in stopped mode to setup a session with more than one message listener. The reason is that when a connection is actively delivering messages, once the first message listener for a session has been registered, the session is now controlled by the thread of control that delivers messages to it. At this point a client thread of control cannot be used to further configure the session.

It should be natural for most clients to partition their work into sessions. This model allows clients to start simply and incrementally add message processing complexity as their need for concurrency grows.

#### 4.4.7 Transactions

A *Session* may be optionally specified as *transacted*. Each transacted session supports a single series of transactions. Each transaction groups a set of produced messages and a set of consumed messages into an atomic unit of work. In effect, transactions organize a session's input message stream and output message stream into series of atomic units. When a transaction commits, its atomic unit of input is acknowledged and its associated atomic unit of output is sent. If a transaction rollback is done, its produced messages are destroyed and its consumed messages are automatically recovered. For more information on session recovery see Section 4.4.13, "Message Acknowledgment"

A transaction is completed using either its session's *commit()* or *rollback()* method. The completion of a session's current transaction automatically begins the next. The result is that a transacted session always has a current transaction within which its work is done.

JTS or some other transaction monitor facility may be used to combine a session's transaction with transactions on other resources (databases, other JMS Sessions, etc.). Since Java distributed transactions are controlled via the JTA transaction demarcation API, use of the session's *commit* and *rollback* methods in this context throws a *JMS TransactionInProgressException*.

#### 4.4.8 *Distributed Transactions*

JMS does not require that a provider support distributed transactions; however, it does define that if a provider supplies this support it should be done via the JTA *XAResource* API.

A JMS provider may also be a distributed transaction monitor. If it is, it should provide control of the transaction via the JTA API.

Although it is possible for a JMS client to handle distributed transactions directly, it is unlikely that many JMS clients will do this. Support for JTA in JMS is targeted at systems vendors who will be integrating JMS into their application server products. See Chapter 8, "JMS Application Server Facilities" for more information.

#### 4.4.9 *Multiple Sessions*

A client may create multiple sessions. Each session is an independent producer and consumer of messages.

For Pub/Sub, if two sessions each have a subscriber that subscribes to the same Topic, each Subscriber is given each message. Delivery to one Subscriber does not block if the other gets behind.

For PTP, JMS does not specify the semantics of concurrent QueueReceivers for the same queue; however, JMS does not prohibit a provider from supporting this.

#### 4.4.10 *Message Order*

JMS clients need to understand when they can depend on message order and when they cannot.

#### 4.4.11 *Order of Message Receipt*

Messages consumed by a session define a serial order. This order is important because it defines the effect of message acknowledgment. See Section 4.4.13, “Message Acknowledgment” for more details. The messages for each of a session’s consumers are interleaved in a session’s input message stream.

JMS defines that messages sent by a session to a destination must be received in the order they were sent (see below for a few qualifications). This defines a partial ordering constraint on a session’s input message stream.

JMS does not define order of message receipt across destinations or across a destination’s messages sent from multiple sessions. This aspect of a session’s input message stream order is timing dependent. It is not under application control.

#### 4.4.12 *Order of Message Sends*

Although clients loosely view the messages they produce within a session as forming a serial stream of sent messages, the total ordering of this stream is not significant. The only ordering that is visible to receiving clients is the order of messages a session sends to a particular destination. Several things can affect this order:

- Messages of higher priority may jump ahead of prior, lower priority messages.
- There is also the possibility that a client may not receive a NON\_PERSISTENT message due to a JMS provider failure.
- If both PERSISTENT and NON\_PERSISTENT messages are sent to a destination, order is only guaranteed within delivery mode. That is, a later NON\_PERSISTENT message may arrive ahead of an earlier PERSISTENT message; however, it will never arrive ahead of an earlier NON\_PERSISTENT message with the same priority.
- A client may use a transacted session to group its sent messages into atomic units (the producer component of a JMS transaction). A transaction’s order of messages to a particular destination is significant. The order of sent

messages across destinations is not significant. See Section 4.4.7, “Transactions” for more information.

### 4.4.13 Message Acknowledgment

If a session is transacted, message acknowledgment is handled automatically by *commit* and recovery is handled automatically by *rollback*.

If a session is not transacted, there are three acknowledgment options and recovery is handled manually:

- **DUPS\_OK\_ACKNOWLEDGE** - This option instructs the session to lazily acknowledge the delivery of messages. This is likely to result in the delivery of some duplicate messages if JMS fails, it should only be used by consumers that are tolerant of duplicate messages. Its benefit is the reduction of session overhead achieved by minimizing the work the session does to prevent duplicates.
- **AUTO\_ACKNOWLEDGE** - With this option, the session automatically acknowledges a client's receipt of a message when it has either successfully returned from a call to receive or the *MessageListener* it has called to process the message successfully returns.
- **CLIENT\_ACKNOWLEDGE** - With this option, a client acknowledges a message by calling the message's *acknowledge* method. Acknowledging a consumed message automatically acknowledges the receipt of all messages that have been delivered by its session.

When **CLIENT\_ACKNOWLEDGE** mode is used, a client may build up a large number of unacknowledged messages while attempting to process them. A JMS provider should provide administrators with a way to limit client over-run so that clients are not driven to resource exhaustion and ensuing failure when some resource they are using is temporarily blocked.

A session's *recover* method is used to stop a session and restart it with its first unacknowledged message. In effect, the session's series of delivered messages is reset to the point after its last acknowledged message. The messages it now delivers may be different from that which were originally delivered due to message expiration and the arrival of higher priority messages.

A session must set the *redelivered* flag of messages it redelivers due to a recovery.

#### 4.4.14 *Duplicate Delivery of Messages*

A JMS provider must never deliver a second copy of an acknowledged message.

When a client uses the `AUTO_ACKNOWLEDGE` mode it is not in direct control of message acknowledgment. Since such clients cannot know for certain if a particular message has been acknowledged, they must be prepared for re-delivery of the last consumed message. This can be caused by the client completing its work just prior to a failure that prevents the message acknowledgment from occurring. Only a session's last consumed message is subject to this ambiguity.

#### 4.4.15 *Duplicate Production of Messages*

JMS providers must never produce duplicate messages. This means that a client that produces a message can rely on its JMS provider to insure the consumers of the message will only receive it once. No client error can cause a provider to duplicate a message.

If a failure occurs between the time a client commits its work on a Session and the commit method returns, the client cannot determine if the transaction was committed or rolled back. The same ambiguity exists when a failure occurs between the non-transactional send of a `PERSISTENT` message and the return from the sending method.

It is up to a JMS application to deal with this ambiguity. In some cases, this may cause a client to produce functionally duplicate messages.

A message that is redelivered due to session recovery is not considered a duplicate message.

#### 4.4.16 *Serial Execution of Client Code*

Even though the Java language provides built-in support for multi-threading, writing multi-threaded programs is still more difficult than writing single threaded ones.

For this reason, JMS does not cause concurrent execution of client code unless a client explicitly requests it. One way this is done is to define that a session serializes all asynchronous delivery of messages.

To receive messages asynchronously, a client registers an object that implements the JMS *MessageListener* interface with a *MessageConsumer*. In effect, a *Session* uses a single thread to run all its *MessageListeners*. While the thread is busy executing one listener, all other messages to be asynchronously delivered to the session must wait.

#### 4.4.17 Concurrent Message Delivery

Clients which desire concurrent delivery can use multiple sessions. In effect, each session's listener thread runs concurrently. While a listener on one session is executing, a listener on another session may also be executing.

Note that JMS itself does not provide the facilities for concurrently processing a topic's message set (the messages delivered to a single consumer). A client could use a single consumer and implement all the multi threading logic needed to concurrently process them; however, it is not possible to reliably do this because JMS does not have the transaction facilities needed to handle the concurrent transactions this would require.

### 4.5 MessageConsumer

A client uses a *MessageConsumer* to receive messages from a destination. It is created by passing a destination to a session's *createMessageConsumer* method.

A consumer can be created with a message selector. This allows the client to restrict the messages delivered to the consumer to those that match the selector. See Section 3.8.1, "Message Selector" for more information.

A client may either synchronously receive a consumer's messages or have the provider asynchronously deliver them as they arrive.

#### 4.5.1 Synchronous Delivery

A client can request the next message from a *MessageConsumer* using one of its *receive* methods. There are several variations of *receive* that allow a client to poll or wait for the next message.

## 4.5.2 Asynchronous Delivery

A client can register an object that implements the JMS *MessageListener* interface with a *MessageConsumer*. As messages arrive for the consumer, the provider delivers them by calling the listener's *onMessage* method.

It is possible for a listener to throw a *RuntimeException*; however, this is considered a client programming error. Well behaved listeners should catch such exceptions and attempt to divert messages causing them to some form of application-specific 'unprocessable message' destination.

The result of a listener throwing a *RuntimeException* depends on the session's acknowledgment mode.

- **AUTO\_ACKNOWLEDGE** - the message will be immediately redelivered. The number of times a JMS provider will redeliver the same message before giving up is provider dependent.
- **CLIENT\_ACKNOWLEDGE** - the next message for the listener is delivered. If a client wishes to have the previous unacknowledged message redelivered it must manually recover the session.
- **Transactional Session** - the next message for the listener is delivered. The client can either commit or rollback the Session (i.e. a *RuntimeException* does not automatically rollback the session).

JMS providers should flag clients with message listeners that are throwing *RuntimeExceptions* as possibly malfunctioning.

See Section 4.4.16, "Serial Execution of Client Code" for information about how *onMessage* calls are serialized by a session.

## 4.6 MessageProducer

A client uses a *MessageProducer* to send messages to a *Destination*. It is created by passing a destination to a session's *createMessageProducer* method.

A client also has the option of creating a producer without supplying a destination. In this case, a destination must be input on every send operation. A typical use for this style of producer is to send replies to requests using the request's *JMSReplyTo* destination.

A client can specify a default delivery mode, priority, and time-to-live for messages sent by a producer. It can also specify delivery mode, priority, and time-to-live per message.



Each time a client creates a *MessageProducer*, it defines a new sequence of messages that have no ordering relationship with the messages it has previously sent.

See Section 3.4.9, “JMSExpiration” for more information on time-to-live. See Section 3.4.10, “JMSPriority” for more information on priority.

## 4.7 Message Delivery Mode

JMS supports two modes of message delivery.

- The `NON_PERSISTENT` mode is the lowest overhead delivery mode because it does not require that the message be logged to stable storage. A JMS provider failure can cause a `NON_PERSISTENT` message to be lost.
- The `PERSISTENT` mode instructs the JMS provider to take extra care to insure the message is not lost in transit due to a JMS provider failure.

A JMS provider must deliver a `NON_PERSISTENT` message *at-most-once*. This means it may lose the message but it must not deliver it twice.

A JMS provider must deliver a `PERSISTENT` message *once-and-only-once*. This means a JMS provider failure must not cause it to be lost and it must not deliver it twice.

`PERSISTENT` (Once-and-only-once) and `NON_PERSISTENT` (at-most-once) message delivery are a way for a JMS client to select between message delivery techniques that may lose a messages if a JMS provider dies and those which take extra effort to insure that messages can survive such a failure. There is typically a performance/reliability trade-off implied by this choice. When a client selects the `NON_PERSISTENT` delivery mode it is indicating that it values performance over reliability; a selection of `PERSISTENT` reverses the requested trade-off.

*The use of `PERSISTENT` messages does not guarantee that all messages are always delivered to every eligible consumer.* See Section 4.10, “Reliability” for further discussion on this topic.

## 4.8 Message Time-To-Live

A client can specify a time-to-live value in milliseconds for each message it sends. This value defines a message expiration time which is the sum of the

message's time-to-live and the GMT it is sent (for transacted sends, this is the time the client sends the message, not the time the transaction is committed).

A JMS provider should do its best to accurately expire messages; however, JMS does not define the accuracy provided. It is not acceptable to simply ignore time-to-live.

For more information on message expiration, see Section 3.4.9, "JMSExpiration".

## 4.9 Exceptions

*JMSException* is the base class for all JMS exceptions. See Chapter 7, "JMS Exceptions" for more information.

## 4.10 Reliability

Most clients should use producers that produce PERSISTENT messages. This insures once-and-only-once message delivery.

In some cases, an application may only require at-most-once message delivery for some of its messages. This is accomplished by publishing NON\_PERSISTENT messages. These messages typically have lower overhead; however, they may be lost if a JMS provider fails. Both PERSISTENT and NON\_PERSISTENT messages can be published to the same destination.

Normally, a consumer fully processes each message before acknowledging its receipt to JMS. This insures that JMS does not discard a partially processed message due to machine failure, etc. A consumer accomplishes this by using either a transacted or CLIENT\_ACKNOWLEDGE'ed session.

*It is expected that important messages will be produced with a PERSISTENT delivery mode within a transaction; and, consumed within a transaction.*

When this is done, applications have the highest level of assurance that a message has been properly produced; reliably delivered; and, accurately consumed. Non-transactional production and consumption can also achieve the same level of assurance; however, this requires careful programming.

A JMS provider may have resource restrictions that limit the number of messages that can be held for high volume destinations or non-responsive clients. If messages are dropped due to resource limits this is usually a serious administrative issue that needs attention. Correct functioning of JMS requires

that clients are responsive and adequate resources to service them are available.

*Once-and-only-once message delivery as described in this specification has the important caveat that it does not cover message destruction due to message expiration or other administrative destruction criteria. It also does not cover loss due to resource restrictions. Configuration of adequate resources and processing power for JMS applications is the job of an administrator who must be aware of their JMS Provider's reliability features.*

### *5.1 Overview*

Point-to-point systems are about working with queues of messages. They are point-to-point in that a client sends a message to a specific queue. Some PTP systems blur the distinction between PTP and Pub/Sub by providing system clients that automatically distribute messages.

It is common for a client to have all its messages delivered to a single queue.

Like any generic mailbox, a queue can contain a mixture of messages. And, like real mailboxes, creating and maintaining each queue is somewhat costly. Most queues are created administratively and are treated as static resources by their clients.

The JMS PTP model defines how a client works with queues. How it finds them; how it sends messages to them; and, how it receives messages from them.

### *5.2 Queue Management*

JMS does not define facilities for creating, administering, or deleting long lived queues (it does provide such a mechanism for *TemporaryQueues*). Since most clients use statically defined queues this is not a problem.

### 5.3 *Queue*

A *Queue* object encapsulates a provider-specific queue name. It is the way a client specifies the identity of queue to JMS methods.

The actual length of time messages are held by a queue and the consequences of resource overflow are not defined by JMS.

See Section 4.2, “Administered Objects” for more information about JMS Destination objects.

### 5.4 *TemporaryQueue*

A *TemporaryQueue* is a unique *Queue* object created for the duration of a *QueueConnection*. It is a system defined queue that can only be consumed by the *QueueConnection* that created it.

See Section 4.4.3, “Creating TemporaryDestinations” for more information.

### 5.5 *QueueConnectionFactory*

A client uses a *QueueConnectionFactory* to create *QueueConnections* with a JMS PTP provider.

See Section 4.2, “Administered Objects” for more information about JMS *ConnectionFactory* objects.

### 5.6 *QueueConnection*

A *QueueConnection* is an active connection to a JMS PTP provider. A client uses a *QueueConnection* to create one or more *QueueSessions* for producing and consuming messages.

See Section 4.3, “Connection” for more information.

### 5.7 *QueueSession*

A *QueueSession* provides methods for creating *QueueReceiver*'s, *QueueSender*'s, *QueueBrowser*'s and *TemporaryQueues*.

If there are messages that have been received but not acknowledged when a *QueueSession* terminates, these messages must be retained and redelivered when a consumer next accesses the queue.

See Section 4.4, “Session“ for more information.

## 5.8 *QueueReceiver*

A client uses a *QueueReceiver* for receiving messages that have been delivered to a queue.

Although it is possible to have two sessions with a *QueueReceiver* for the same queue, JMS does not define how messages are distributed between the *QueueReceivers*.

If a *QueueReceiver* specifies a message selector, the messages that are not selected remain on the queue. By definition, a message selector allows a *QueueReceiver* to skip messages. This means that when the skipped messages are eventually read, the total ordering of the reads does not retain the partial order defined by each message producer. Only *QueueReceivers* without a message selector will read messages in message producer order.

For more information see Section 4.5, “MessageConsumer“.

## 5.9 *QueueSender*

A client uses a *QueueSender* to send messages to a queue.

For more information see Section 4.6, “MessageProducer“.

## 5.10 *QueueBrowser*

A client uses a *QueueBrowser* to look at messages on a queue without removing them.

The browse methods return a *java.util.Enumeration* that is used to scan the queue’s messages. It may be an enumeration of the entire content of a queue or it may only contain the messages matching a message selector.

Messages may be arriving and expiring while the scan is done. JMS does not require the content of an enumeration to be a static snapshot of queue content. Whether these changes are visible or not depends on the JMS provider.

## 5.11 *QueueRequestor*

JMS provides a *QueueRequestor* helper class to simplify making service requests.

The *QueueRequestor* constructor is given a *QueueSession* and a destination queue. It creates a *TemporaryQueue* for the responses and provides a *request* method that sends the request message and waits for its reply.

This is a basic request/reply abstraction that should be sufficient for most uses. JMS providers and clients can create more sophisticated versions.

## 5.12 *Reliability*

A queue is typically created by an administrator and exists for a long time. It is always available to hold messages sent to it whether or not the client that consumes its messages is active. For this reason, a client does not have to take any special precautions to insure it does not miss messages.

### 6.1 Overview

The JMS Pub/Sub model defines how JMS clients publish messages to, and subscribe to messages from a well known node in a content based hierarchy. JMS calls these nodes *topics*.

In this section, the terms *publish* and *subscribe* are used in place of the more generic terms *produce* and *consume* used previously.

A topic can be thought of as a mini message broker that gathers and distributes messages addressed to it. By relying on the topic as an intermediary, message publishers are kept independent of subscribers and vice versa. The topic automatically adapts as both publishers and subscribers come and go.

Publishers and subscribers are *active* when the Java objects that represent them exist. JMS also supports the optional *durability* of subscribers that ‘remembers’ the existence of them while they are inactive.

### 6.2 Pub/Sub Latency

Since there is typically some latency in all pub/sub systems, the exact messages seen by a subscriber may vary depending on how quickly a JMS provider propagates the existence of a new subscriber and the length of time a provider retains messages in transit.

For instance, some messages from a distant publisher may be missed because it may take a second for the existence of a new subscriber to be propagated



system wide. When a new subscriber is created, it may receive messages sent earlier because a provider may still have them available.

JMS does not define the exact semantics that apply during the interval when a pub/sub provider is adjusting to a new client. JMS semantics only apply once the provider has reached a ‘steady state’ with respect to a new client.

### 6.3 *Durable Subscription*

Non-durable subscriptions last for the lifetime of their subscriber object. This means that a client will only see the messages published on a topic while its subscriber is active. If the subscriber is not active, it is missing messages published on its topic.

At the cost of higher overhead, a subscriber can be made *durable*. A *durable subscriber* registers a *durable subscription* with a unique identity that is retained by JMS. Subsequent subscriber objects with the same identity resume the subscription in the state it was left by the prior subscriber. If there is no active subscriber for a durable subscription, JMS retains the subscription’s messages until they are received by the subscription or until they expire.

All JMS providers must be able to run JMS applications that dynamically create and delete durable subscriptions. Some JMS providers may, in addition, provide facilities to administratively configure durable subscriptions. If a durable subscription has been administratively configured it is valid for it to silently override the subscription specified by the client.

An *inactive* durable subscription is one that exists but does not currently have a message consumer subscribed to it.

### 6.4 *Topic Management*

Some products require that topics be statically defined with associated authorization control lists, etc.; others don’t even have the concept of topic administration.

JMS does not define facilities for creating, administering, or deleting topics.

A special type of topic called a *TemporaryTopic* is provided for creating a Topic that is unique to a TopicConnection. See Section 6.6, “TemporaryTopic” for more details.

## 6.5 *Topic*

A *Topic* object encapsulates a provider-specific topic name. It is the way a client specifies the identity of a topic to JMS methods.

Many Pub/Sub providers group topics into hierarchies and provide various options for subscribing to parts of the hierarchy. JMS places no restriction on what a *Topic* object represents. It might be a leaf in a topic hierarchy or it might be a larger part of the hierarchy (for subscribing to a general class of information).

The organization of topics and the granularity of subscriptions to them is an important part of a Pub/Sub application's architecture. JMS does not specify a policy for how this should be done. If an application takes advantage of a provider-specific topic grouping mechanism, it should document this. If the application is installed using a different provider, it is the job of the administrator to construct an equivalent topic architecture and create equivalent *Topic* objects.

## 6.6 *TemporaryTopic*

A *TemporaryTopic* is a unique *Topic* object created for the duration of a *TopicConnection*. It is a system defined *Topic* that can only be consumed by the *TopicConnection* that created it.

By definition, it does not make sense to create a durable subscription to a temporary topic. To do this is a programming error that may or may not be detected by a JMS Provider.

See Section 4.4.3, "Creating TemporaryDestinations" for more information.

## 6.7 *TopicConnectionFactory*

A client uses a *TopicConnectionFactory* to create *TopicConnections* with a JMS Pub/Sub provider.

See Section 4.2, "Administered Objects" for more information about JMS *ConnectionFactory*'s.

## 6.8 *TopicConnection*

A *TopicConnection* is an active connection to a JMS Pub/Sub provider. A client uses a *TopicConnection* to create one or more *TopicSessions* for producing and consuming messages.

See Section 4.3, “Connection” for more information.

## 6.9 *TopicSession*

A *TopicSession* provides methods for creating *TopicPublisher*'s, *TopicSubscriber*'s and *TemporaryTopics*. It also provides the *unsubscribe* method for deleting its client's durable subscriptions.

See Section 4.4, “Session” for more information.

## 6.10 *TopicPublisher*

A client uses a *TopicPublisher* for publishing messages on a topic. *TopicPublisher* is the Pub/Sub variant of a JMS *MessageProducer*. See Section 4.6, “MessageProducer” for a description of its common features.

## 6.11 *TopicSubscriber*

A client uses a *TopicSubscriber* for receiving messages that have been published to a topic. *TopicSubscriber* is the Pub/Sub variant of a JMS *MessageConsumer*. For more information see Section 4.5, “MessageConsumer”.

Regular *TopicSubscriber*'s are not durable. They only receive messages that are published while they are active.

Messages filtered out by a subscriber's message selector will never be delivered to the subscriber. From the subscriber's perspective they simply don't exist.

In some cases, a connection may both publish and subscribe to a topic. The subscriber *NoLocal* attribute allows a subscriber to inhibit the delivery of messages published by its own connection.

A *TopicSession* allows the creation of multiple *TopicSubscribers* per destination, it will deliver each message for a destination to each *TopicSubscriber* eligible to receive it. Each copy of the message is treated as a completely separate

message. Work done on one copy has no effect on the other; acknowledging one does not acknowledge the other; one message may be delivered immediately while another waits for its consumer to process messages ahead of it.

### 6.11.1 *Durable TopicSubscriber*

If a client needs to receive all the messages published on a topic including the ones published while the subscriber is inactive, it uses a durable *TopicSubscriber*. JMS retains a record of this durable subscription and insures that all messages from the topic's publishers are retained until they are either acknowledged by this durable subscriber or they have expired.

Sessions with durable subscribers must always provide the same client identifier. In addition, each client must specify a name which uniquely identifies (within client identifier) each durable subscription it creates. Only one session at a time can have a *TopicSubscriber* for a particular durable subscription. See Section 4.3.2, "Client Identifier" for more information.

A client can change an existing durable subscription by creating a durable *TopicSubscriber* with the same name and a new topic and/or message selector. Changing a durable subscription is equivalent to deleting and recreating it.

*TopicSessions* provide the *unsubscribe* method for deleting a durable subscription created by their client. This deletes the state being maintained on behalf of the subscriber by its provider. It is erroneous for a client to delete a durable subscription while it has an active *TopicSubscriber* for it or while a message received by it is part of a current transaction or has not been acknowledged in the session.

## 6.12 *Recovery and Redelivery*

Due to the temporary nature of non-durable subscriptions, attempting to recover one's unacknowledged messages may drop messages. When a non-durable subscriber terminates, messages waiting for it will likely be dropped whether or not they have been acknowledged.

Only durable subscriptions are reliably able to recover unacknowledged messages.

### 6.13 Administering Subscriptions

Ideally, publishers and subscribers are dynamically registered by a provider when they are created. From the client viewpoint this is always the case. From the administrators viewpoint, there may be other tasks need to support their creation.

The amount of resources allocated for message storage and the consequences of resource overflow are not defined by JMS.

### 6.14 TopicRequestor

JMS provides a *TopicRequestor* helper class to simplify making service requests.

The *TopicRequestor* constructor is given a *TopicSession* and a destination topic. It creates a *TemporaryTopic* for the responses and provides a *request()* method that sends the request message and waits for its reply.

This is a basic request/reply abstraction that should be sufficient for most uses. JMS providers and clients are free to create more sophisticated versions.

### 6.15 Reliability

When all messages for a topic must be received, a durable subscriber should be used. JMS insures that messages published while a durable subscriber is inactive are retained by JMS and delivered when the subscriber subsequently becomes active.

Non-durable subscribers should only be used when missed messages are tolerable.

Table 0-10 Pub/Sub Reliability

How Published	Non-Durable Subscriber	Durable Subscriber
NON_PERSISTENT	at-most-once (missed if inactive)	at-most-once
PERSISTENT	once-and-only-once (missed if inactive)	once-and-only-once

## 7.1 Overview

This chapter provides an overview of JMS exception handling and defines the standard JMS exceptions.

## 7.2 The *JMSException*

JMS defines *JMSException* as the root interface for exceptions thrown by JMS methods. *JMSException* is a checked exception and catching it provides a generic way of handling all JMS related exceptions. *JMSException* provides the following information:

- A provider-specific string describing the error - This string is the standard Java exception message, and is available via *getMessage()*.
- A provider-specific, string error code
- A reference to another exception - Often a JMS exception will be the result of a lower level problem. If appropriate, this lower level exception can be linked to the JMS exception.

JMS methods only include *JMSException* in their signatures. JMS methods can throw any JMS standard exception as well as any JMS provider specific exception. **The javadoc for JMS methods documents only the mandatory exception cases.**

## 7.3 Standard Exceptions

In addition to *JMSException*, JMS defines several additional exceptions that standardize the reporting of basic error conditions.

There are only a few cases where JMS mandates that a specific JMS exception must be thrown. These cases are indicated by the words **must be** in the exception description. **These cases are the only ones on which client logic should depend on a specific problem resulting in a specific JMS exception being thrown.**

In the remainder of cases, it is strongly suggested that JMS providers use one of the standard exceptions where possible. JMS providers may also derive provider specific exceptions from these if needed.

JMS defines the following standard exceptions:

- *IllegalStateException*: This exception is thrown when a method is invoked at an illegal or inappropriate time or if the provider is not in an appropriate state for the requested operation. For example, this exception should be thrown if *Session.commit()* is called on a non-transacted session.
- *JMSSecurityException*: This exception **must be** thrown when a provider rejects a user name/password submitted by a client. It may also be thrown for any case where a security restriction prevents a method from completing.
- *InvalidClientIDException*: This exception **must be** thrown when a client attempts to set a connection's client id to a value that is rejected by a provider.
- *InvalidDestinationException*: This exception **must be** thrown when a destination is either not understood by a provider or is no longer valid.
- *InvalidSelectorException*: This exception **must be** thrown when a JMS client attempts to give a provider a message selector with invalid syntax.
- *MessageEOFException*: This exception **must be** thrown when an unexpected end of stream has been reached when a *StreamMessage* or *BytesMessage* is being read.
- *MessageFormatException*: This exception **must be** thrown when a JMS client attempts to use a data type not supported by a message or attempts to read data in a message as the wrong type. It must also be thrown when equivalent type errors are made with message property values. For example, this exception must be thrown if *StreamMessage.setObject()* is given an

---

unsupported class or if *StreamMessage.getShort()* is used to read a boolean value. This exception also **must be** thrown if a provider is given a type of message it cannot accept. Note that the special case of a failure caused by attempting to read improperly formatted *String* data as numeric values should throw the *java.lang.NumberFormatException*.

- *MessageNotReadableException*: This exception **must be** thrown when a JMS client attempts to read a write-only message.
- *MessageNotWritableException*: This exception **must be** thrown when a JMS client attempts to write to a read-only message.
- *ResourceAllocationException*: This exception is thrown when a provider is unable to allocate the resources required by a method. For example, this exception should be throw when a call to *createTopicConnection* fails due to lack of JMS Provider resources.
- *TransactionInProgressException*: This exception is thrown when an operation is invalid because a transaction is in progress. For instance, attempting to call *Session.commit()* when a session is part of a distributed transaction should throw a *TransactionInProgressException*.
- *TransactionRolledBackException*: This exception **must be** thrown when a call to *Session.commit* results in a rollback of the current transaction.





## *8.1 Overview*

This chapter describes JMS facilities for concurrent processing of a subscription's messages. It also defines how a JMS provider supplies JTS aware sessions. These facilities can also be used by expert JMS clients.

These facilities are a special category of JMS. They will only be supported by the more sophisticated JMS providers.

## *8.2 Concurrent Processing of a Subscription's Messages*

JMS provides a special facility for creating a *MessageConsumer* that can concurrently consume messages.

This facility partitions the work into three roles:

- JMS provider - its role is to deliver the messages.
- Application Server - its role is to create the consumer and manage the threads used by the concurrent *MessageListener* objects.
- Application - its role is to define a subscription with a destination and optionally a message selector and provide a single threaded *MessageListener* class to consume its messages. An application server will construct multiple objects of this class to concurrently consume messages.

### 8.2.1 *Session*

Sessions provide three methods for use by application servers:

- *setMessageListener()* and *getMessageListener()* - a session's *MessageListener* consumes messages that have been assigned to the session by a *ConnectionConsumer*; see below.
- *run()* - causes the messages assigned to its session by a *ConnectionConsumer* to be serially processed by the session's *MessageListener*. When the listener returns from processing the last message, *run()* returns.

An application server would typically be given a *MessageListener* class which contains the single threaded code written by an application programmer to process messages. It would also be given the destination and message selector that specified the messages the listener was to consume.

An application server would take care of creating the JMS *Connection*, *ConnectionConsumer*, and *Sessions* it needs to handle message processing. It would create as many *MessageListener* instances as it needed and register each with its own session.

Since many listeners will need to use the services of its session, the listener is likely to require that its session be passed to it as a constructor parameter.

### 8.2.2 *ServerSession*

A *ServerSession* is an object implemented by an application server. It is used by an application server to associate a thread with a JMS session.

A *ServerSession* implements two methods:

- *getSession()* - returns the *ServerSession*'s JMS *Session*.
- *start()* - starts the execution of the *ServerSession* thread and results in the execution of the associated JMS *Session*'s *run* method.

### 8.2.3 *ServerSessionPool*

A *ServerSessionPool* is an object implemented by an application server to provide a pool of *ServerSessions* for processing the messages of a *ConnectionConsumer*.

Its only method is *getServerSession()*. This removes a *ServerSession* from the pool and gives it to the caller (which is assumed to be a *ConnectionConsumer*) to use for consuming one or more messages.

JMS does not architect how the pool is implemented. It could be a static pool of *ServerSessions* or it could use a sophisticated algorithm to dynamically create *ServerSessions* as needed.

If the *ServerSessionPool* is out of *ServerSessions*, the *getServerSession()* method may block. If a *ConnectionConsumer* is blocked, it cannot deliver new messages until a *ServerSession* is eventually returned.

### 8.2.4 *ConnectionConsumer*

For application servers, connections provide a special facility for creating a *ConnectionConsumer*. The messages it is to consume are specified by a destination and a message selector. In addition, a *ConnectionConsumer* must be given a *ServerSessionPool* to use for processing its messages. A *maxMessages* value is specified to limit the number of messages a *ConnectionConsumer* may load at one time into a *ServerSession*'s *Session*.

Normally, when traffic is light, a *ConnectionConsumer* gets a *ServerSession* from its pool; loads its *Session* with a single message; and, starts it. As traffic picks up, messages can back up. If this happens, a *ConnectionConsumer* can load each *Session* with more than one message. This reduces the thread context switches and minimizes resource use at the expense of some serialization of a message processing.

### 8.2.5 *How a ConnectionConsumer Uses a ServerSession*

A *ConnectionConsumer* implemented by a JMS provider uses a *ServerSession* to process one or more messages that have arrived. It does this as follows:

- It gets a *ServerSession* from the its *ServerSessionPool*
- It gets the *ServerSession*'s *Session*
- It loads the *Session* with one or more messages
- It then starts the *ServerSession* to consume these messages

A *ConnectionConsumer* for a *QueueConnection* will expect to load its messages into a *QueueSession*; as would one for a *TopicConnection* expect to load a *TopicSession*.

Note that JMS does not architect how the *ConnectionConsumer* loads the *Session* with messages. Since both the *ConnectionConsumer* and *Session* are implemented by the same JMS provider, they can accomplish the load using a private mechanism.

### 8.2.6 *How an App Server Implements a ServerSession*

JMS does not architect the implementation of a *ServerSession*. A typical implementation is presented here to illustrate the concept:

- An app server creates a *Thread* for a *ServerSession* registering the *ServerSession's runObject*. The implementation of this *runObject* is private to the app server.
- The *ServerSession's start* method calls its *Thread's start* method. Like all Java threads, a call to start initiates execution of the started thread and calls the thread's *runObject*. The caller to *ServerSession.start* (the *ConnectionConsumer*) and the *ServerSession runObject* are now running in different threads.
- The *runObject* will do some housekeeping and then call its *Session's run()* method. On return, the *runObject* puts its *ServerSession* back into its *ServerSessionPool* and returns. This terminates execution of the *ServerSession's* thread and the cycle starts again.

### 8.2.7 *The Result*

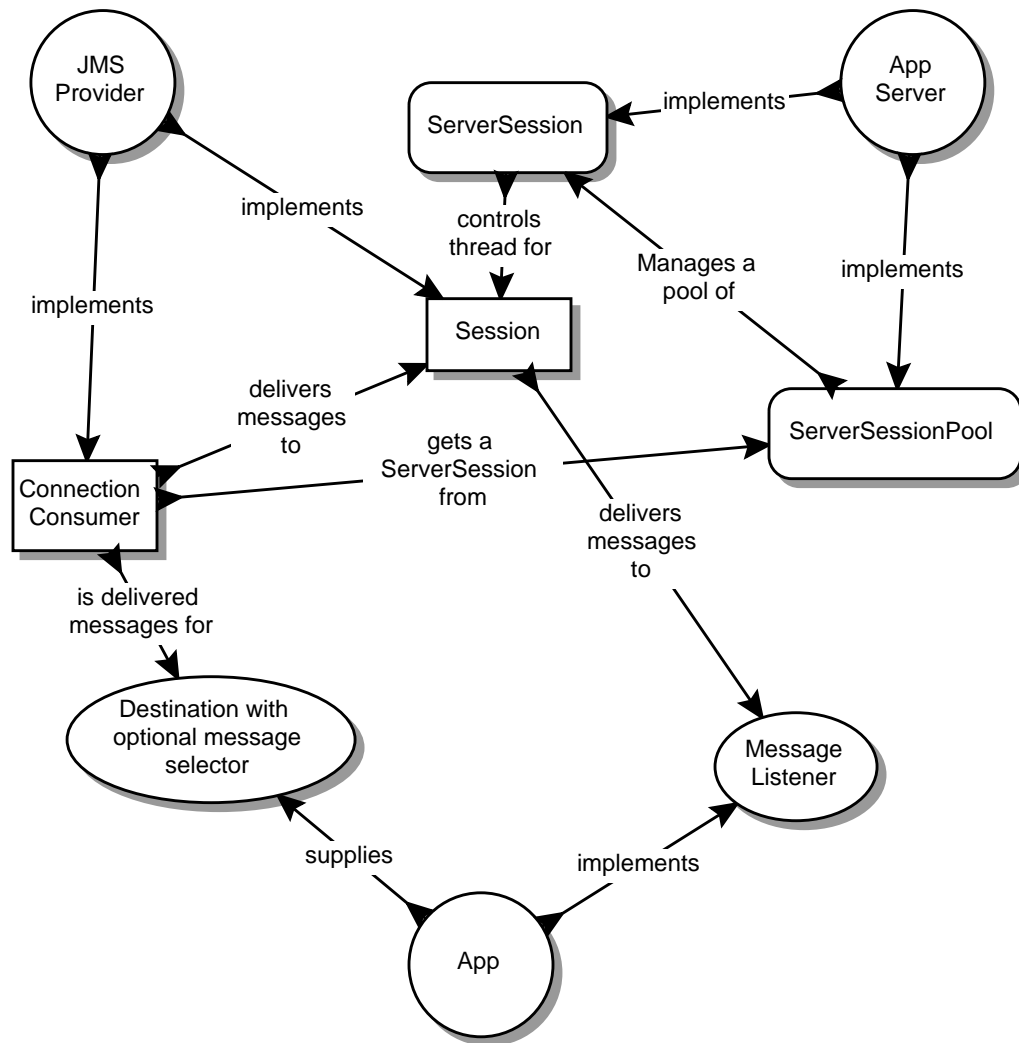
JMS has defined a flexible mechanism that partitions the job of concurrent message consumption into roles that are well suited for each participant.

The application programmer provides a simple to write, single threaded implementation of *MessageListener*.

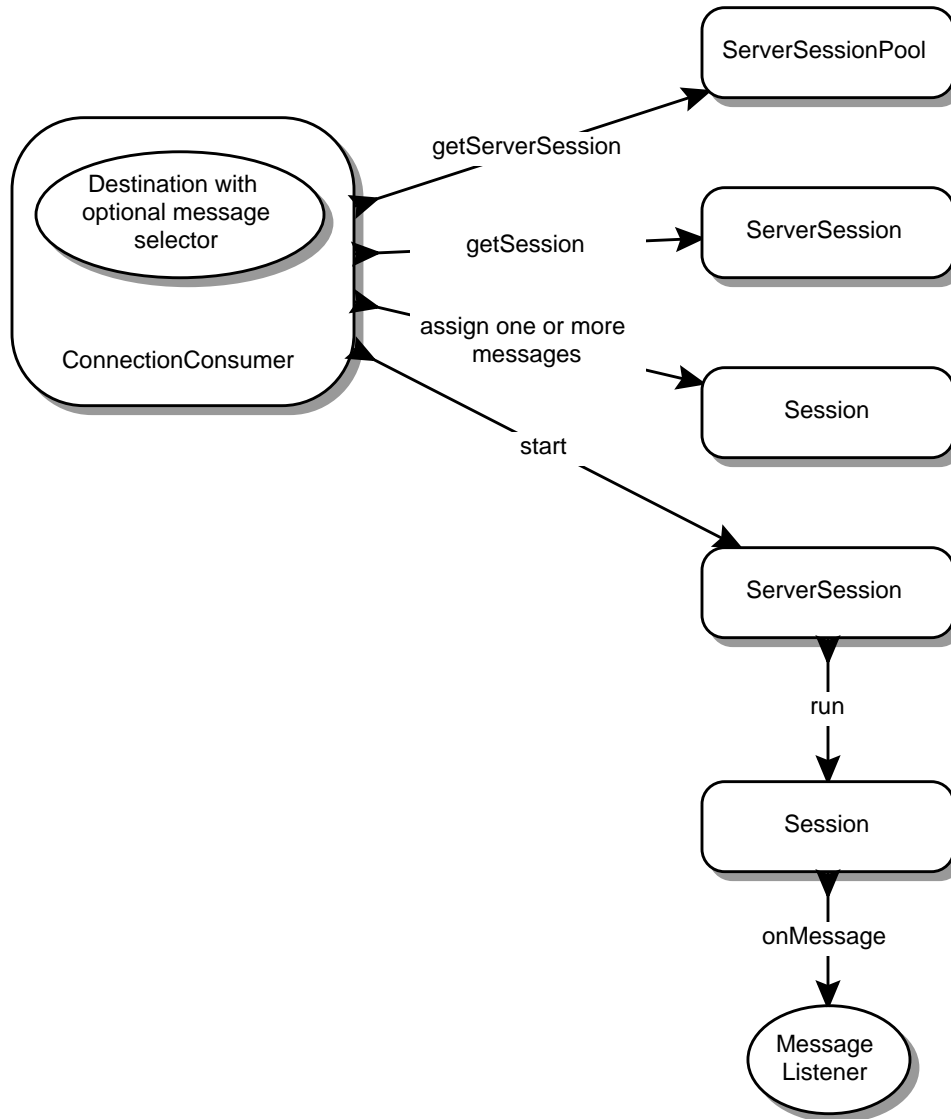
The JMS provider retains control of its messages until they are delivered to the *MessageListener*. This insures it is under direct control of message acknowledgment.

The application server is in control of setting up the *ConnectionConsumer* and managing all the threads used for executing its *MessageListeners*.

The following diagram illustrates the relationship between the three roles and the objects they implement.



The following diagram illustrates the process a ConnectionConsumer uses to deliver a message to a MessageListener.



### 8.3 *XAConnectionFactory*

Some application servers provide support for grouping resource use into a distributed transaction. To include JMS transactions in a distributed transaction, an application server requires a Java Transaction API (JTA) capable JMS provider. A JMS provider exposes its JTA support using a JMS *XAConnectionFactory* which an application server uses to create *XAConnections*.

*XAConnectionFactory* provides the same authentication options as *ConnectionFactory*.

*XAConnectionFactory*'s are JMS administered objects just like *ConnectionFactory*'s. It is expected that application servers will find them using JNDI.

### 8.4 *XAConnection*

*XAConnection* extends the capability of *Connection* by providing the ability to create *XASessions*.

### 8.5 *XASession*

*XASession* provides access to what looks like a normal *Session* object and a *javax.transaction.xa.XAResource* object which controls the session's transaction context. The functionality of *XAResource* closely resembles that defined by the standard X/Open XA Resource interface.

An application server controls the transactional assignment of an *XASession* by obtaining its *XAResource*. It uses the *XAResource* to assign the session to a distributed transaction; prepare and commit work on the transaction; etc.

An *XAResource* provides some fairly sophisticated facilities for interleaving work on multiple transactions; recovering a list of transactions in progress; etc. A JTA aware JMS provider must fully implement this functionality. This could be done by using the services of a database that supports XA or a JMS provider may choose to implement this functionality from scratch.

A client of the application server is given the *XASession*'s *Session*. Behind the scenes, the application server controls the transaction management of the underlying *XASession*.



It is important to note that a distributed transaction context does *not* flow with a message; and, the receipt of the message cannot be part of the same transaction that produced the message. This is the fundamental difference between messaging and synchronized processing. Message producers and consumers use an alternative approach to reliability that is built upon a JMS providers ability to supply a once-and-only-once message delivery guarantee.

To reiterate, the act of producing and/or consuming messages in a Session can be transactional. The act of producing and consuming a specific message across different sessions cannot.

## 8.6 JMS Application Server Interfaces

Both PTP and Pub/Sub domains provide their own versions of JTS aware JMS facilities.

*Table 0-11* Relationship of PTP and Pub/Sub expert interfaces

JMS Root	PTP Interface	Pub/Sub Interface
ServerSessionPool		
ServerSession		
ConnectionConsumer		
XAConnectionFactory	XAQueueConnectionFactory	XATopicConnectionFactory
XAConnection	XAQueueConnection	XATopicConnection
XASession	XAQueueSession	XATopicSession

### *9.1 Sample JMS Code*

#### *9.1.1 Background*

The following code examples show several ways a client could use the various JMS API message types with both the Point-to-Point and Publish/Subscribe messaging, to obtain stock quote information.

Note that no exception handling code is included. This makes it easier to see what's happening.

Lets assume that there is a stock quote service which sends out the stock quote messages. This could be done in many different ways, and as will be shown below, the construction of these messages is the same for both PTP and Pub/Sub messaging.

Before we can send and receive message, the client application needs to do some initial setup.

#### *9.1.2 Point-to-Point Setup*

Here is an example that shows how to send and receive messages using Point-to-Point messaging.

### 9.1.2.1 *Getting a QueueConnectionFactory*

Both the message sender and receiver need to get a queue connection factory and use it to setup both a queue connection and a queue session.

An administrator typically has created and configured a `QueueConnectionFactory` for our use. We typically get it by looking it up using JNDI.

```
QueueConnectionFactory queueConnectionFactory;  
Context messaging = new InitialContext();  
queueConnectionFactory = (QueueConnectionFactory)  
messaging.lookup("QueueConnectionFactory");
```

### 9.1.2.2 *Getting a Message Queue*

An administrator has created and configured "StockQueue" for our use. Again, we use JNDI to look it up.

```
Queue stockQueue;  
  
stockQueue = (Queue) messaging.lookup("StockQueue");
```

### 9.1.2.3 *Getting a QueueConnection*

Having obtained the `QueueConnectionFactory`, we use it to create a `QueueConnection`.

```
QueueConnection queueConnection;  
queueConnection = queueConnectionFactory.createQueueConnection();
```

### 9.1.2.4 *Getting a QueueSession*

Having obtained the `QueueConnection`, we use it to create a `QueueSession`. This will be used to create a `QueueSender` (if we want to send messages) or a `QueueReceiver` (if we want to receive messages).

We use the `QueueConnection.createQueueSession` method to do this, supplying two parameters:

- A boolean indicating whether this queue session will be transacted or not
- The mode of acknowledging message receipt

```
QueueSession session;
```

```
session = queueConnection.createQueueSession(false,  
Session.AUTO_ACKNOWLEDGE);
```

### 9.1.2.5 *Getting a QueueSender*

Having obtained the `QueueSession`, we use it to create a `QueueSender`, if we are going to be sending messages to the queue. This is achieved with the `QueueSession.createSender` method. We supply one parameter; the queue we are going to be sending messages to.

```
QueueSender sender;  
  
sender = session.createSender(queue);
```

### 9.1.2.6 *Getting a QueueReceiver*

In a similar fashion, we get a `QueueReceiver` if we are going to be receiving messages from the queue. This is achieved with the `QueueSession.createReceiver` method. We supply one parameter; the queue we are going to be receiving messages from.

```
QueueReceiver receiver;  
  
receiver = session.createReceiver(queue);
```

### 9.1.2.7 *Start Delivery of Messages*

Up until this point, delivery of messages has been inhibited so that the preceding setup could be done without being interrupted with asynchronously delivered messages. Now that the setup is complete, the connection is told to begin the delivery of messages to its message consumers.

```
queueConnection.start();
```

## 9.1.3 *Publish/Subscribe Messaging Domain Setup*

Here is an equivalent example that shows how to send and receive messages using Pub/Sub messaging:

### 9.1.3.1 *Getting a TopicConnectionFactory*

Both the message publisher and subscriber need to get a topic connection factory and use it to setup a connection and a topic session.

An administrator typically has created and configured a TopicConnectionFactory for our use. We typically get it by looking it up using JNDI.

```
TopicConnectionFactory topicConnectionFactory;  
Context messaging = new InitialContext();  
topicConnectionFactory = (TopicConnectionFactory)  
messaging.lookup("TopicConnectionFactory");
```

### 9.1.3.2 *Getting a Message Topic*

An administrator has created and configured "StockQueue" for our use. Again, we use JNDI to look it up.

```
Topic stockTopic;  
stockTopic = (Topic) messaging.lookup("StockTopic");
```

### 9.1.3.3 *Getting a TopicConnection*

Having obtained the TopicConnectionFactory, we use it to create a TopicConnection.

```
TopicConnection topicConnection;  
topicConnection = topicConnectionFactory.createTopicConnection();
```

### 9.1.3.4 *Getting a TopicSession*

Having obtained the TopicConnection, we use it to create a TopicSession. This will be used to create a TopicPublisher (if we want to publish messages) or a TopicSubscriber (if we want to receive messages).

We use the TopicConnection.createTopicSession method to do this, supplying two parameters:

- A boolean indicating whether this topic session will be transacted on not;
- The mode of acknowledging message receipt

```
TopicSession session;  
  
session = topicConnection.createTopicSession(false,  
Session.CLIENT_ACKNOWLEDGE);
```

### 9.1.3.5 *Getting a TopicSubscriber*

Having obtained the `TopicSession`, we use it to obtain a `TopicSubscriber` if we are going to subscribe to the topic in order to receive messages. This is achieved with the `TopicSession.createSubscriber` method. We supply the topic we wish to subscribe to.

First we create a topic subscriber:

```
TopicSubscriber subscriber;  
  
subscriber = session.createSubscriber(stockTopic);
```

In order to asynchronously receive messages as they are delivered to our subscriber, we need to create a message listener which implements the `javax.jms.MessageListener` interface.

Our listener class (lets call it `StockListener.java`) would look something like:

```
public class StockListener implements javax.jms.MessageListener {  
  
    void  
    onMessage(Message message) {  
  
        // unpack and handle the messages we receive.  
  
    }  
}
```

Next we register this message listener with our subscriber:

```
StockListener myListener;  
subscriber.setMessageListener(myListener);
```

### 9.1.3.6 *Getting a TopicPublisher*

Having obtained the `TopicSession`, we use it to create a `TopicPublisher` if we are going to be publishing messages to the topic. This is achieved with the

`TopicSession.createPublisher` method. We supply one parameter; the topic we are going to be publishing messages to.

```
TopicPublisher publisher;  
  
publisher = session.createPublisher(stockTopic);
```

### 9.1.3.7 *Start Delivery of Messages*

Up until this point, delivery of messages has been inhibited so that the preceding setup could be done without being interrupted with asynchronously delivered messages. Now that the setup is complete, the connection is told to begin the delivery of messages to its message consumers.

```
topicConnection.start();
```

## 9.1.4 *JMS Message Types*

We now need to put the stock information into one of the JMS message types. Our queue or topic session has all the methods needed for creating a message of the type we want.

### 9.1.4.1 *Using a BytesMessage*

The stock quote information could be in a binary format that the server knows how to construct, and the client knows how to interpret and display as a stock quote.

Such a message could be constructed with:

```
byte[] stockData;    // stock information as a byte array  
BytesMessage message;  
  
message = session.createBytesMessage();  
message.writeBytes(stockData);
```

### 9.1.4.2 *Using a TextMessage*

The stock quote information could be sent as a human-readable text string which is just read and displayed by the client.

We can create such a message with:

```
String stockData;    // stock information as a String
TextMessage message;

message = session.createTextMessage();
message.setText(stockData);
```

### 9.1.4.3 Using a MapMessage

Each stock message sent by the server could be a map of various stock quote name/value pairs. For example, it could contain entries for:

- stock quote name - String
- current value - double
- time of quote - long
- last change - double
- stock information - String

The client would receive the whole map message, but might only be interested in displaying part of this information. It could extract the required fields from the message, ignoring the rest.

Construction of a stock MapMessage would be something like:

```
String stockName;    // the name of the stock quote.
double stockValue;   // the current value of the stock.
long  stockTime;     // the time of the stock quote.
double stockDiff;    // the +/- change in the stock quote.
String stockInfo;    // information on this stock.
MapMessage message;

message = session.createMapMessage();
```

Note that the following can be set in any order.

```
message.setString("Name",  stockName);
message.setDouble("Value", stockValue);
message.setLong("Time",    stockTime);
message.setDouble("Diff",  stockDiff);
message.setString("Info",  stockInfo);
```



#### 9.1.4.4 *Using a StreamMessage*

In a similar fashion to the map message, the server could send out a message consisting of various fields written in sequence to the message, each in their own primitive type:

- stock quote name - String
- current value - double
- time of quote - long
- last change - double
- stock information - String.

The client might be only interested in some of the message field, but in the case of a stream message, it has to read (and potentially throw away) each field in turn.

The stock StreamMessage could be created with:

```
String stockName;    // the name of the stock quote.
double stockValue;  // the current value of the stock.
long  stockTime;    // the time of the stock quote.
double stockDiff;   // the +/- change in the stock quote.
String stockInfo;   // information on this stock.
StreamMessage message;

message = session.createStreamMessage();
```

Note that the following have to be written in the order they will be read.

```
message.writeString(stockName);
message.writeDouble(stockValue);
message.writeLong(stockTime);
message.writeDouble(stockDiff);
message.writeString(stockInfo);
```

#### 9.1.4.5 *Using an ObjectMessage*

The stock information could be sent in the form of a special Stock Java object, which the client extracts, then uses its methods to obtain the stock information it requires.

Construction of such an object message could look like:

```
String stockName;    // the name of the stock quote.
```

```
double stockValue;    // the current value of the stock.
long   stockTime;     // the time of the stock quote.
double stockDiff;     // the +/- change in the stock quote.
String stockInfo;     // information on this stock.
StockObject stockObject = new StockObject();
ObjectMessage message;
```

These values could have been passed in when the stock object was constructed.

```
stockObject.setName(stockName);
stockObject.setValue(stockValue);
stockObject.setTime(stockTime);
stockObject.setDiff(stockDiff);
stockObject.setInfo(stockInfo);

message = session.createObjectMessage();
message.setObject(stockObject);
```

## 9.1.5 *Point-to-Point Sending and Receiving*

Here's how to send and receive messages in the Point-To-Point messaging domain:

### 9.1.5.1 *Sending a Message*

Sending of all of these message types is done in the same way:

```
sender.send(message);
```

### 9.1.5.2 *Receiving a Message*

Receiving of all of these message types is done in the same way. Here is how to receive the next message in the queue. Note that this call will block indefinitely until a message arrives on the queue.

```
StreamMessage stockMessage;
stockMessage = (StreamMessage)receiver.receive();
```

## 9.1.6 *Publish/Subscribe Sending and Receiving*

Here's how to send and receive messages in the Publish/Subscribe messaging domain:

### 9.1.6.1 *Sending a Message*

Sending (publishing) of all of these message types is done in the same way:

```
publisher.publish(message);
```

### 9.1.6.2 *Receiving a Message*

Receiving of all of these message types is done in the same way. When the client subscribed to the topic, it registered a message listener. This listener will be asynchronously notified whenever a message has been published to the topic. This is done via the `onMessage()` method in that listener class. It is up to the client to process the message there.

```
void  
onMessage(Message message) {  
  
    // unpack and handle the messages we receive.  
  
}
```

## 9.1.7 *Unpacking messages*

Unpacking of a message is different for each message type, but works the same way in both the Point-To-Point and the Publish/Subscribe messaging domains.

### 9.1.7.1 *Unpacking a BytesMessage*

```
byte[]    stockData;    // stock information as a byte array  
int       length;  
  
length = message.readBytes(stockData);
```

### 9.1.7.2 *Unpacking a TextMessage*

```
String stockData;    // stock information as a String  
  
stockData = message.getText();
```

### 9.1.7.3 *Unpacking a MapMessage*

Note that the following can be gotten in any order.

```
String stockName;      // the name of the stock quote.
double stockValue;     // the current value of the stock.
long  stockTime;       // the time of the stock quote.
double stockDiff;      // the +/- change in the stock quote.
String stockInfo;      // information on this stock.

stockName = message.getString("Name");
stockValue = message.getDouble("Value");
stockTime = message.getLong("Time");
stockDiff = message.getDouble("Diff");
stockInfo = message.getString("Info");
```

### 9.1.7.4 *Unpacking a StreamMessage*

Note that the following have to be read in the order they were written.

```
String stockName;      // the name of the stock quote.
double stockValue;     // the current value of the stock.
long  stockTime;       // the time of the stock quote.
double stockDiff;      // the +/- change in the stock quote.
String stockInfo;      // information on this stock.

stockName = message.readString();
stockValue = message.readDouble();
stockTime = message.readLong();
stockDiff = message.readDouble();
stockInfo = message.readString();
```

### 9.1.7.5 *Unpacking an ObjectMessage*

```
String stockName;      // the name of the stock quote.
double stockValue;     // the current value of the stock.
long  stockTime;       // the time of the stock quote.
double stockDiff;      // the +/- change in the stock quote.
String stockInfo;      // information on this stock.
StockObject stockObject = new StockObject();

stockObject = message.getObject();
stockName = stockObject.getName();
stockValue = stockObject.getValue();
stockTime = stockObject.getTime();
stockDiff = stockObject.getDiff();
stockInfo = stockObject.getInfo();
```

## 9.1.8 Message Selection

We might be interested in only certain stock quotes. We can create a message selector to achieve this. For this example, we will assume that we only want to receive stock quotes for Sun Microsystems (SUNW) and IBM (IBM), and that the stock name has been set in a property called *name*.

Our message selector String would look like this:

```
String selector;  
  
selector = new String("(name = 'SUNW') OR (name = 'IBM')");
```

### 9.1.8.1 Point-To-Point QueueReceiver Setup

When we create our QueueReceiver, we pass in the message selector String:

```
QueueReceiver receiver;  
  
receiver = session.createReceiver(queue, selector);
```

### 9.1.8.2 Publish/Subscribe TopicSubscriber Setup

When we create our TopicSubscriber, we pass in the message selector String.

```
TopicSubscriber subscriber;  
  
subscriber = session.createSubscriber(topic, selector);
```

Now we will only receive the stock quotes we are interested in.

### *10.1 Resolved Issues*

#### *10.1.1 JDK 1.1.x Compatibility*

JMS is compatible with JDK 1.1.x.

#### *10.1.2 Distributed Java Event Model*

JMS can be used, in general, as a notification service; however, it does not define a distributed version of Java Events.

One alternative for implementing distributed Java Events would be as JavaBeans that transparently, to the event producer and listener beans, distribute the events via JMS.

#### *10.1.3 Should the Two JMS Domains, PTP and Pub/Sub, be merged?*

Even though there are many similarities, providing separate domains still seem to be important.

It means that vendors aren't forced to support facilities out of their domain and client code can be a bit more portable because products more fully support a domain (as opposed to supporting less defined subsets of a merged domain).

#### *10.1.4 Should JMS Specify a Set of JMS Java Beans?*

JMS is a low level API and like other Java low level API's it doesn't lend itself to direct representation as JavaBeans.

#### *10.1.5 Alignment with the CORBA Notification Service*

The Notification service adds filtering, delivery guarantee semantics, durable connections, and the assembly of event networks to the CORBA Event Service. It gets its delivery guarantee semantics from the CORBA Messaging Service (which defines asynchronous CORBA method invocation).

Java technology is well integrated with CORBA. It provides Java IDL and COS Naming. In addition, OMG has recently defined RMI over IIOP.

It is expected that most use of IIOP from Java will be via RMI. It is expected that most use of COS Naming from Java will be via JNDI (Java Naming and Directory Service). JMS is a Java specific API designed to be layered over a wide range of existing and future MOM systems (just like JNDI is layered over existing name and directory services).

#### *10.1.6 Should JMS Provide End-to-end Synchronous Message Delivery and Notification of Delivery?*

Some messaging systems provide synchronous delivery to destinations as a mechanism for implementing reliable applications. Some systems provide clients with various forms of delivery notification so that the clients can detect dropped or ignored messages. This is not the model defined by JMS.

JMS messaging provides guaranteed delivery via the once-and-only-once delivery semantics of PERSISTENT messages. In addition, message consumers can insure reliable processing of messages by using either CLIENT\_ACKNOWLEDGE mode or transactional Sessions.

This achieves reliable delivery with minimum synchronization and is the enterprise messaging model most vendors and developers prefer.

JMS does not define a schema of systems messages (such as delivery notifications). If an application requires acknowledgment of message receipt, it can define an application level acknowledgment message.

These issues are more clearly understood when they are examined in the context of Pub/Sub applications. In this context, synchronous delivery and/or system acknowledgment of receipt are not an effective mechanism for implementing reliable applications (because producers by definition are not, and don't want to be, responsible for end-to-end message delivery).

### *10.1.7 Should JMS Provide a Send-to-List Mechanism?*

Currently JMS provides a number of message send options; however, messages can only be sent to one Destination at a time.

The benefit of send-to-list is slightly less work for the programmer and the potential for the JMS provider to optimize the fact that several destinations are being sent the same message.

The down side of a send-to-list mechanism is that the list is, in effect, a group that is implemented and maintained by the client. This would complicate the administration of JMS clients.

Instead of JMS providing a send-to-list mechanism, it is recommended that providers support configuring destinations that represent a group. This allows a client to reach all consumers with a single send while insuring that groups are properly administrable.

### *10.1.8 Should JMS Provide Subscription Notification?*

If it were possible for a publisher to detect when subscribers for a topic existed, it could inhibit publication on unsubscribed topics.

Although there may be some benefit in providing publishers with a mechanism for inhibiting publication to unsubscribed topics, the complexity this would add to JMS and the additional provider overhead it would require is not justified by its potential benefits. Instead, JMS providers should insure that they minimize the overhead for handling messages published to an unsubscribed topic.





## 11.1 Version 1.0.1

### 11.1.1 JMS Exceptions

A new JMS Exception chapter was added and it contains the following new information:

- Two fields were added to *JMSException* - a vendor error code and an Exception reference.
- In version 1.0, *JMSException* was the only JMS exception specified. Version 1.0.1 adds a list of standard exceptions derived from *JMSException* and describes when each should be thrown by JMS providers.

## 11.2 Version 1.0.2

The objective of JMS 1.0.2 is to correct errata in the JMS 1.0.1 specification and code that have been uncovered by implementors and users. It also contains many clarifications that resolve ambiguities found in the previous versions.

### 11.2.1 The Multiple Topic Subscriber Special Case

JMS 1.0.1 specified that in the special case of two topic subscribers on a session with overlapping subscriptions, a message that was selected by both would only be delivered to one. Implementation experience revealed that this case

was better handled in the same way that overlapping subscriptions from different sessions are treated, so this special case has been removed.

### *11.2.2 Message Selector Comparison of Exact and Inexact Numeric Values*

JMS 1.0.1 specified that message selectors did not support the comparison of exact and inexact numeric values. This conflicted with the requirement to support numeric promotion. This has been changed to support exact and inexact comparison.

### *11.2.3 Connection and Session Close*

JMS 1.0.1 did not fully specify the sequence for closing a connection and its sessions. This sequence is now fully specified.

JMS 1.0.1 was ambiguous about whether or not calls to connection and session close returned immediately. Connection and session close now explicitly state that they block until message processing has been orderly shutdown.

### *11.2.4 Creating a Session on an Active Connection*

When a session is created on an active (as opposed to stopped) connection it is only possible to create at most a single asynchronous consumer for it. A more detail discussion of this case is provided.

### *11.2.5 Delivery Mode and Message Retention*

The effect that delivery mode has on message retention for a consumer has been clarified.

### *11.2.6 The 'single thread' Use of Sessions*

Sessions are designed to minimize the need to write for multi-threaded code in order to support the asynchronous consumption of messages. Clarification on the benefits and the programming model of this design have been added.

### *11.2.7 Clearing a Message's Properties and Body*

A clarification has been added that notes that clearing a message's properties and clearing its body are independent.

### *11.2.8 Message Selector Numeric Literal Syntax*

A note has been added that states that the numeric literal syntax is that specified by the Java language.

### *11.2.9 Comparison of Boolean Values in Message Selectors*

A note has been added that only equality and inequality comparisons are supported.

### *11.2.10 Order of Messages Read from a Queue*

A note has been added that explains that a client can read messages from a destination in an order different from the order they have been sent by using a selector that matches a later message and then using a selector that matches an earlier message.

### *11.2.11 Null Values in Messages*

A note has been added that message values are allowed to be null.

### *11.2.12 Closing Constituents of Closed Connections and Sessions*

There was some ambiguity about whether or not `close` needed to be called on all JMS objects. A note has been added that states that there is no need to close the sessions of a closed connection; and, there is no need to close the producers and consumers of a closed session.

### *11.2.13 The Termination of a Pending Receive on Close*

JMS 1.0.1 did not describe how a pending message receive is terminated if its session or connection is closed. It is now specified that in this case receive returns a null message.

### ***11.2.14 Incorrect Entry in Stream and Map Message Conversion Table***

This table erroneously included a required conversion between char and String. This has been removed.

### ***11.2.15 Inactive Durable Subscription***

A note explaining that an inactive durable subscription is one that exists but does not at the time have a TopicSubscriber created for it.

### ***11.2.16 Read-Only Message Body***

The read-only semantics of received message bodies was documented in the *Message* javadoc but was not included in the spec. It has been added.

### ***11.2.17 Changing Header Fields of a Received Message***

When a message is received, its header field values may be changed; however, its property entries and its body are read-only. A note clarifying this has been added.

### ***11.2.18 Null/Missing Message Properties and Message Fields***

The result of accessing a null/missing value as a Java primitive type was previously not fully specified. This has clarified.

### ***11.2.19 JMS Source Errata***

Two methods required by the spec were left out of the source, the `getJMSXPropertyNames` method of `ConnectionMetaData` and the `getExceptionListener` method of `Connection`. These have been added.

The type of the time-to-live parameter of `setTimeToLive` and `getTimeToLive` methods of `MessageProducer` and the type of the default time-to-live constant were `int` and have been changed to `long`.

The close sequence of `TopicRequestor` and `QueueRequestor` did not agree with the order specified in the specification and this has been corrected.

The type of the parameter of the `createTextMessage` method that takes an input value was changed from `StringBuffer` to `String`.

The subscription name parameter was missing from the `createDurableSubscription` method of `TopicConnection`. It has been added.

### 11.2.20 JMS Source JavaDoc Errata

The correct end-of-message indicator for the `readBytes` method of `BytesMessage` is a return value of `-1`.

The `setPriority` method of `MessageProducer` should have a parameter named 'priority' not 'deliveryMode'.

### 11.2.21 JMS Source JavaDoc Clarifications

Note that byte values are returned as `byte[]` not `Byte[]` by the `readObject` method of `StreamMessage` and the `getObject` method of `MapMessage`.

Note that the `acknowledge` method of `Message` acknowledges all messages received on that message's session.

Note that the `InvalidClientIDException` is used for any client id value that a JMS provider considers invalid. Since client id value is JMS provider specific the criteria for determining a valid value is provider specific.

A note has been added to the `readBytes` method of `StreamMessage` and `BytesMessage` to describe how values that overflow the size of the input buffer are handled.

A note has been added that clarifies when `setClientID` method of `Connection` should be used.

Note that calling the `setMessageListener` method of `MessageConsumer` with a null value is equivalent to unsetting the `MessageListener`.

Note that the `unsubscribe` method of `TopicSession` should not be called to delete a durable subscription if there is a `TopicConsumer` currently consuming it.

Note that result of calling the `setMessageListener` method of `MessageConsumer` while messages are being consumed by an existing listener or the consumer is being used to synchronously consume messages is undefined.

Note the *createTopic* method of *TopicSession* and the *createQueue* method of *QueueSession* are used for converting a JMS provider specific name into a *Topic* or *Queue* object that represents an existing topic or queue by that name. These methods are not for creating the physical topic or queue. The physical creation of topics and queues are administrative tasks and are not done by JMS. The one exception is the creation of temporary topics and queues which is done using the *createTemporaryTopic* and *createTemporaryQueue* methods.

Note that the *setObject* method of *ObjectMessage* places a copy of the input object in a message.

Note that a connection is created in stopped mode and, for incoming messages to be delivered to the message listeners of its sessions, its *start* method must be called.

Documentation of *Message* default constants has been added.

Note the result of *readBytes* method of *StreamMessage* when the callers *byte[]* buffer is smaller than the *byte[]* field value being read.

The documentation of *QueueRequestor* and *TopicRequestor* has been improved.

The *IllegalStateException* has been noted as a required exception for several more error conditions. they are acknowledging a message received from a closed session; attempting to call the *recover* method of a transacted session; attempting to call any method of a closed connection, session, consumer or producer (with the exception of the *close* method itself); attempting to set a connection's client identifier at the wrong time or when it has been administratively configured.



JavaSoft  
2550 Garcia Avenue  
Mountain View, CA 94043  
408-343-1400

For U.S. Sales Office locations, call:  
800 821-4643  
In California:  
800 821-4642

Australia: (02) 844 5000  
Belgium: 32 2 716 7911  
Canada: 416 477-6745  
Finland: +358-0-525561  
France: (1) 30 67 50 00  
Germany: (0) 89-46 00 8-0  
Hong Kong: 852 802 4188  
Italy: 039 60551  
Japan: (03) 5717-5000  
Korea: 822-563-8700  
Latin America: 415 688-9464  
The Netherlands: 033 501234  
New Zealand: (04) 499 2344  
Nordic Countries: +46 (0) 8 623 90 00  
PRC: 861-849 2828  
Singapore: 224 3388  
Spain: (91) 5551648  
Switzerland: (1) 825 71 11  
Taiwan: 2-514-0567  
UK: 0276 20444

Elsewhere in the world,  
call Corporate Headquarters:  
415 960-1300  
Intercontinental Sales: 415 688-9000