

What's New in Netscape 6.2

Netscape 6.2 builds on the successful release of Netscape 6.1 and allows you to do more online with power, efficiency and safety. New in this release are:

Support for the latest operating systems

- ◆ BETTER INTEGRATION WITH WINDOWS XP
 - Netscape 6.2 is now only one click away within the Windows XP Start menu if you choose Netscape as your default browser and mail applications. Also, you can view the number of incoming email messages you have from your Windows XP login screen.
- ◆ FULL SUPPORT FOR MACINTOSH OS X

Other enhancements

Netscape 6.2 offers a more seamless experience between Netscape Mail and other applications on the Windows platform. For example, you can now easily send documents from within Microsoft Word, Excel or Power Point without leaving that application. Simply choose File, "Send To" to invoke the Netscape Mail client to send the document.

What follows is a more comprehensive list of the enhancements delivered in Netscape 6.1

Netscape 6.1 Highlights



PR Contact: Catherine Corre – (650) 937-4046

CONFIDENTIAL UNTIL AUGUST 8, 2001

Netscape Communications Corporation ("Netscape") and its licensors retain all ownership rights to this document (the "Document"). Use of the Document is governed by applicable copyright law. Netscape may revise this Document from time to time without notice.

THIS DOCUMENT IS PROVIDED "AS IS" WITHOUT WARRANTY OF ANY KIND. IN NO EVENT SHALL NETSCAPE BE LIABLE FOR INDIRECT, SPECIAL, INCIDENTAL, OR CONSEQUENTIAL DAMAGES OF ANY KIND ARISING FROM ANY ERROR IN THIS DOCUMENT, INCLUDING WITHOUT LIMITATION ANY LOSS OR INTERRUPTION OF BUSINESS, PROFITS, USE OR DATA.

The Document is copyright © 2001 Netscape Communications Corporation. All rights reserved.

Netscape, Netscape Communicator, Netscape Navigator and the Netscape N and Ship's Wheel logos are registered trademarks of Netscape Communications Corporation in the United States and other countries. Netscape Gecko and other Netscape logos, product names and service names are also trademarks of Netscape Communications Corporation, which may be registered in some countries. Instant Messenger is a trademark of America Online, Inc. Other product and brand names are trademarks of their respective owners. The downloading, exporting or reexporting of Netscape software or any underlying information or technology must be in full compliance with all U. S. and other applicable laws and regulations. Any provision of Netscape software or documentation to the U.S. Government is with restricted rights as described in the license agreement accompanying Netscape software.

Highlights of Netscape 6.1


Netscape 6.1 lets you do more online with efficiency, power, and safety.

Netscape 6.1, the latest update to the Netscape browser suite, greatly enhances the performance and stability of Netscape 6 while improving functionality and adding a number of key features. Netscape 6.1 lets you accomplish more online with efficiency in completing tasks, power through more choice, and safety with more control over your online experience.

Download Netscape 6.1 today at <http://www.netscape.com/browsers>.

Netscape 6.1 is a robust suite of software that includes a browser, email, instant messaging, address book, web page editor and other tools and plug-ins that help you do more online.

There are many unique advantages that Netscape 6.1 offers over prior Netscape products and competitive products. Throughout this guide, we use icons to visually indicate these advantages; when Netscape 6.1 has a clear advantage compared to other products, you will see these icons:

- ◆  A reason for Netscape Communicator users to upgrade
- ◆  An example where Netscape 6.1 leads other browser software
- ◆  New since the release of Netscape 6

Efficiency in Completing Tasks

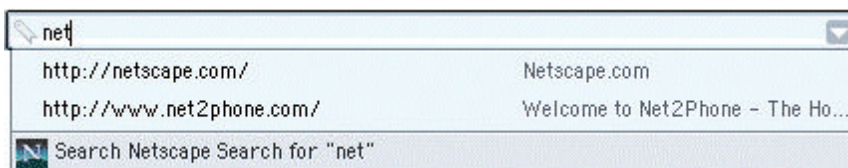
How much time does it take you to save a bookmark or find a web page you've already visited? How often have you searched your email inbox or trash to find an email address? How much quicker would it be to reply to an email message with an instant message, if only you knew the sender was online?

These are all common tasks that underscore the importance of efficiency. Netscape 6.1 has been designed with efficiency in mind, to reduce the number of steps – and time – it takes to get things done on the Web.

Here are some of the features in Netscape 6.1 that save you time so you can complete your tasks more quickly:

◆ SEARCH

- ❑ Multiple access points to initiate a search, including the URL bar and Search button in Navigator, the Search tab in My Sidebar, and the Search Menu in every component of Netscape 6.1. **WIN UPG**
- ❑ Auto complete in the URL bar initiates a search with one click. **NEW UPG**

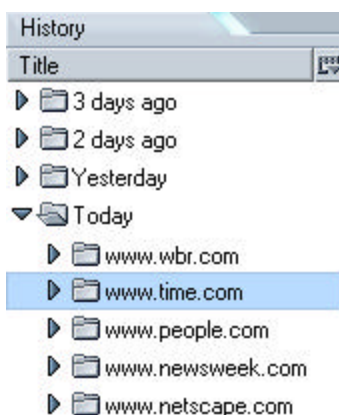


- ❑ Search results delivered simultaneously in the main browser window and in My Sidebar – a Netscape exclusive – give you complete information and one click access to alternative results even after visiting other web sites. **WIN UPG**
- ❑ The Search functionality of Netscape 6.1 defaults to the Netscape Search service, which is powered by the Netscape Open Directory Project – the #1 search directory – and Google – the #1 search engine. Users can, however, customize search with a choice of search services or by using several search engines at once. **WIN UPG**

◆ FASTER LAUNCH

- ❑ The Quick Launch feature¹ in Netscape 6.1 helps you get started faster by dramatically reducing the startup time of the browser. **NEW WIN UPG**

◆ HISTORY



- ❑ The History tab in My Sidebar lets you quickly find web pages you have previously visited. **NEW UPG**
- ❑ The History Management window helps you find previously visited web pages more quickly based on the web page name, URL, date visited, or other attributes. **WIN**

¹ To turn on Quick Launch, open your browser, go to Edit | Preferences | Advanced, and click on the "Enable Quick Launch" checkbox. Note that Quick Launch is designed for use with a single profile on Windows only.

◆ BOOKMARKS

- ❑ The Bookmark Management window helps you quickly find the web page you want based on the web page name, its URL, date last visited or other attributes. **WIN**
- ❑ One click “File Bookmark” makes it easy to save bookmarks directly into folders. **NEW UPG**

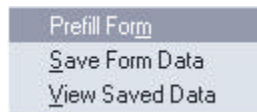
◆ ENHANCED USER INTERFACE

- ❑ A streamlined Navigator interface that has fewer main buttons and toolbars to reduce distractions and give you more space for your web page. **WIN UPG**
- ❑ New Mail interface includes a startup view that helps you get started in a particular email account more quickly by providing one click access to your inbox, account settings, email filters, and more. **NEW UPG**

◆ DOWNLOAD

- ❑ The new download interface lets you see, with just one click, where a file has been downloaded on your computer. You will never again have to manually search your hard drive for a file you just downloaded. **NEW UPG**

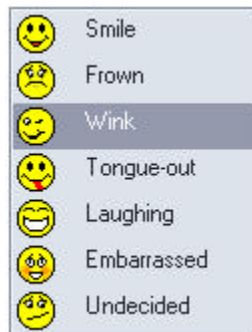
◆ FORM MANAGER



- ❑ Tired of typing the same information into every site before buying anything? Automatically fill an entire web form with key information like your name, address and more. Do this with one click rather than one field at a time. **WIN UPG**

◆ EMAIL

- ❑ Easy access to multiple email accounts allows you to switch smoothly from your business to your personal identity, and keep your correspondence separate. **UPG**
- ❑ When writing an email message, start typing a name, and Netscape automatically offers you a list of possible matches. Thanks to our Email Address Collection feature, that list includes addresses from emails you’ve received, even if you haven’t saved that person’s address in your personal address book. **WIN UPG**



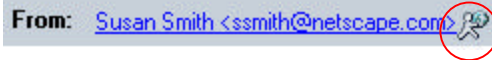
- ❑ Add extra flavor to your messages with Emoticons: fun “smiley-face” images to add to your email messages and instant messages. **NEW UPG**

◆ AUTOTRANSLATE

- When you run into a web page in a foreign language, use AutoTranslate to automatically translate the text into your native language. Languages supported include English, French, German, Russian, Japanese, Italian, Spanish, Portuguese, and Chinese. **WIN UPG**

◆ INSTANT MESSENGER

- Instant Messenger is integrated in all the components of Netscape 6.1 through the Buddy List tab in My Sidebar, so you always have access to your online buddies. **WIN UPG**
- Click a special Instant Messaging icon on a web page to launch an instant messaging session. **NEW WIN UPG**
- Within email messages, Netscape will indicate if the sender of the message is online and available for an instant message. Use one click to send your instant message. **WIN UPG**



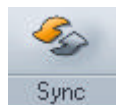
Power Through More Choice

With choice comes power. You can choose which search engine to use, which tabs to include in My Sidebar, and what Instant Messenger screen name to use. You can even control the overall appearance of the user interface, or determine what operating system you use. You also have the power of managing multiple email accounts in one convenient location.

Here are some of the features in Netscape 6.1 that give you power through choice in how you use the Internet:

◆ MAIL ACCOUNTS

- Enjoy easy access to your multiple email accounts, including Netscape WebMail, AOL Mail, as well as other IMAP and POP email accounts like Yahoo. **WIN UPG**
- Netscape 6.1 now provides synchronization with the AOL Address Book, providing convenience for AOL users. **NEW WIN UPG**



- You can manage your Netscape WebMail account while offline and synchronize your personal address book with your Netscape WebMail address book, giving you access to your key contacts from anywhere on the Web. **NEW WIN UPG**

◆ SEARCH AND NAVIGATION

- Netscape lets you integrate almost any search engine, giving you hundreds of choices. **WIN UPG**
- Keywords let you visit a site without knowing the complicated URL. For example, type "united airlines" in the search/URL field, press enter, and you go to <http://www.ual.com>. You can also create your own custom keywords that take you to web addresses you specify. For example, "mom" could take you to her personal web page. **WIN UPG**

◆ MY SIDEBAR

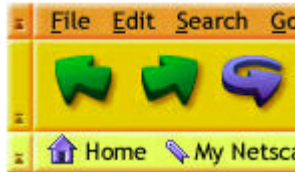
- Choose from hundreds of tabs from Netscape and third parties, including new tabs like History, Shopping and FedEx. **NEW WIN UPG**
- Easily open, close or resize My Widebar within Navigator, Mail, Address Book and Composer. **WIN UPG**



- Quickly add a tab from web sites by clicking on an “Add tab to Netscape 6” button. **WIN UPG**

◆ USER INTERFACE

- Switch between themes to change the look of all of the components and windows within Netscape 6.1. **WIN UPG**



- Try the updated Modern theme (the default for Netscape 6.1) or a brand new theme like Toy Factory (shown left) available on the Netscape Theme Park at <http://www.netscape.com/themes>. **NEW WIN UPG**

◆ INSTANT MESSAGING

- Sign up for multiple screen names and choose the one you want to use. **WIN UPG**

◆ LANGUAGES

- Simultaneous shipment of Windows for English-UK, German, and Japanese. Within 30 days, additional platforms and Windows versions of French, Spanish and Canadian will also ship. **WIN**
- Language packs let you switch your browser software to support the content and language of your choice without restarting or downloading new software. **NEW WIN**
- Netscape 6.1 now includes support for languages such as Hebrew and Arabic that read from right to left.² In addition, the browser can display text that runs in both directions on the same page. **NEW UPG**

◆ OPERATING SYSTEMS AND DEVICES

- Surf the Web and send email with whichever operating system you prefer, including Windows, MacOS and Linux, all of which ship simultaneously in the US. **WIN**
- Only Netscape delivers the same code base and therefore the same functionality across all supported platforms and devices, so you are not giving anything up by choosing your preferred environment. **WIN**

² Hebrew support is on Windows and Linux. Support for Arabic is currently for native Arabic Windows only.

Safety with More Control

Many Internet users are concerned about their privacy and security while online. People think a great deal about the safety of their online environment and want to know what they can do to enhance it. Netscape 6.1 delivers more control over the privacy and security of your Internet experience than any other browser.

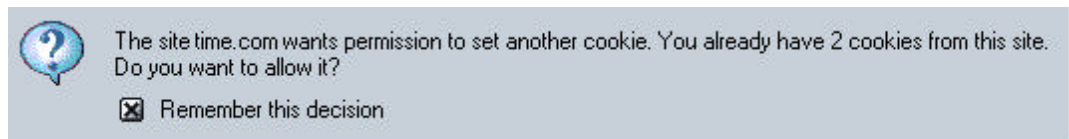
Some of the features in Netscape 6.1 that put you in control of your online privacy and security:

◆ COOKIE MANAGER

- Choose which sites can set cookies and which sites to block. **WIN UPG**



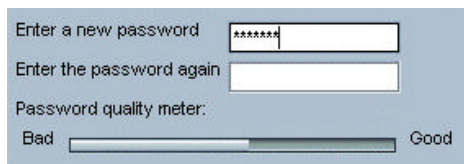
- Choose to get alerts for cookie requests without getting overwhelmed with pop-up dialogs. The first time a site attempts to set a cookie, choose within the dialog to accept or block cookies from that site and let Netscape 6.1 remember that decision for you. **WIN UPG**



- Easily view all current cookies. Delete any you wish, and at the same time block any new cookies from unwanted sites. **WIN UPG**

◆ PASSWORD MANAGER

- Save time and trouble by letting Netscape's Password Manager remember and automatically fill in your username and password for specific web sites. **UPG**
- Do you share your computer with family members or perhaps co-workers? Set a Master Password so other users cannot access your saved passwords or use them to access your personal information on a web site. **WIN UPG**



- The Set Master Password dialog includes a Password Quality Meter to help you select a particularly secure password. **NEW WIN UPG**

- The Master Password also encrypts local passwords and Form Manager data to offer additional privacy from family and co-workers who share your computer. **WIN UPG**

Top Features of Netscape 6.1 at a Glance

Top Features Introduced since Netscape 6:

Performance and Stability	Performance and stability enhancements in Navigator and Mail to speed you through online tasks.
User Interface	Improved user interface for Navigator, Mail, and Instant Messenger, and a clean, updated Modern theme.
History and Bookmark Management	More efficient Navigation through the new History tab and Bookmark Management features.
Search	Auto complete in the URL bar initiates a search with one click.
Download	New interface helps you easily find downloaded files on your computer.
Netscape WebMail	Read your Netscape WebMail and other IMAP email accounts even when you are not connected to the Internet.
Instant Messenger	Launch an instant message by clicking on a link within a web page.
Quick Launch	Turn on Quick Launch to get started faster than ever.

Top Features not found in Other Browsers:

Instant Messenger Integration	Netscape Instant Messenger integrated in all Netscape 6.1 components, plus presence of online buddies in email messages.
My Sidebar	Choose from among hundreds of Netscape and third party My Sidebar tabs to keep you connected to the content and tools that are most important to you.
Search	Search results delivered simultaneously in My Sidebar and main browser windows.
AOL Integration	For AOL users, integration of AOL Mail and AOL Address Book.
Safety	More powerful controls over your online privacy and security.
Quick Launch	Turn on Quick Launch to get started faster than ever.
Additional Efficiency Features	Additional efficiency features like Form Manager, Email Address Collection and AutoTranslate, so tasks take less time to complete.
Greater Flexibility and Choice	Greater flexibility and choice in search engines, My Sidebar tabs, and operating systems.

Top Features for Netscape Communicator 4.x Users:

Multiple email accounts, including AOL Mail and Netscape WebMail.
My Sidebar: Your personal space to stay connected to important information.
Search results presented in My Sidebar.
Fully integrated instant messaging.
Themes to completely customize your user interface.
Powerful safety features such as the Cookie Manager.
Time saving features such as Password Manager, Form Manager and Email Address Collection.
Quick Launch gets you started faster than ever.
International features such as AutoTranslate and support for Hebrew.
Smooth migration (bookmarks, email, and more) and a quick download make it easy to upgrade.

For Developers: Netscape DevEdge has new tools to make it easy to build and update web sites that work on all major browsers

At Netscape, we realize that it is expensive to maintain different web pages for different browsers. That's why Netscape DevEdge (<http://developer.netscape.com>) delivers tools, documentation and a community for building web content that works correctly in both Netscape and Microsoft browsers.

Update your site with the DevEdge Web Tune-Up tool: New with the launch of Netscape 6.1, Netscape DevEdge offers a simple tool to test and update your web site to make sure it works with Netscape 6.1 and other leading browsers. DevEdge offers the tools and materials for updating your site whether it's simple or highly complex.

Build with open web standards: DevEdge guides developers building web pages based on open standards. For many developers, that simply means using HTML and JavaScript. Other developers who want to more fully exploit Netscape 6.1 can spend 15 minutes creating a tab for My Sidebar.

DevEdge also includes robust documentation and tools for developing more sophisticated content and applications with open standards. That includes HTML 4.0, CSS 1, CSS 2, DOM 1 & DOM 2 (Core and HTML), RDF, XML 1.0, XML Namespaces 1.0, XML data exchange, transformation of XML documents with XSLT, XPath 1.0, XHTML 1.0, JavaScript 1.5 and more.

Develop for multiple browsers, multiple operating systems: Since Netscape 6.1 provides the same platform for Windows, MacOS and Linux, developers only have to create a page once and it should work the same on all these operating systems. For a multiple browser world, DevEdge also demonstrates how to use web standards to make your site work on different versions of Microsoft's Internet Explorer.

Join DevEdge: Developers can join DevEdge to get updated news and information on web development and to collaborate with industry experts and other developers. Subscription to a biweekly newsletter offers the latest information on tools and services of interest to developers.

Netscape 6.1

Reviewer's Guide



PR Contact: Catherine Corre – (650) 937-4046

Table of Contents

Introduction: Netscape 6.1 At a Glance	1
Netscape Navigator	4
My Sidebar	15
Netscape Mail	19
Netscape Instant Messenger	26
Netscape Composer	30
Safety	33
Netscape 6.1 Speaks Your Language	37
Extras	40
Installer	43
Netscape Client Customization Kit	45
The New Netscape DevEdge for Web Developers	47
Appendix A: Standards Support and New Technologies in Netscape Gecko and Netscape 6.1	50

Netscape Communications Corporation ("Netscape") and its licensors retain all ownership rights to this document (the "Document"). Use of the Document is governed by applicable copyright law. Netscape may revise this Document from time to time without notice.

THIS DOCUMENT IS PROVIDED "AS IS" WITHOUT WARRANTY OF ANY KIND. IN NO EVENT SHALL NETSCAPE BE LIABLE FOR INDIRECT, SPECIAL, INCIDENTAL, OR CONSEQUENTIAL DAMAGES OF ANY KIND ARISING FROM ANY ERROR IN THIS DOCUMENT, INCLUDING WITHOUT LIMITATION ANY LOSS OR INTERRUPTION OF BUSINESS, PROFITS, USE OR DATA.

The Document is copyright © 2001 Netscape Communications Corporation. All rights reserved. Netscape, Netscape Communicator, Netscape Navigator and the Netscape N and Ship's Wheel logos are registered trademarks of Netscape Communications Corporation in the United States and other countries. Netscape Gecko and other Netscape logos, product names and service names are also trademarks of Netscape Communications Corporation, which may be registered in some countries. Instant Messenger is a trademark of America Online, Inc. Other product and brand names are trademarks of their respective owners. The downloading, exporting or reexporting of Netscape software or any underlying information or technology must be in full compliance with all U. S. and other applicable laws and regulations. Any provision of Netscape software or documentation to the U.S. Government is with restricted rights as described in the license agreement accompanying Netscape software.

Introduction: Netscape 6.1 At a Glance

Do More Online with Netscape 6.1

Netscape 6.1, the latest update to the Netscape browser suite, greatly enhances the performance and stability of Netscape 6 while improving functionality and adding a number of key features. Netscape 6.1 lets you accomplish more online with efficiency in completing tasks, power through more choice and safety with more control.

Netscape 6.1 includes Netscape Navigator, Netscape Mail, Netscape Instant Messenger, Netscape Composer, Netscape Address Book and other tools and plug-ins that help you get more from the Internet. Explore the highlights of Netscape 6.1 below.

Efficiency in Completing Tasks

How much time does it take you to save a bookmark or find a Web page you have previously visited? How often have you searched your email inbox or trash to find an email address? How often would it be quicker to send an instant message instead of an email, if only you knew the recipient was online?

These are all common tasks that underscore the importance of efficiency. Netscape 6.1 has been designed with efficiency in mind, to reduce the number of steps -- and time -- it takes to get things done on the Web.

Here are some of the efficiency features in Netscape 6.1 that save you time so you can get your tasks done more quickly:

- **Search** - auto complete in the URL bar initiates a search with one click
- **Bookmarks** - one click "File Bookmark" interface makes it easier to save bookmarks directly into folders
- **History** - History tab in My Sidebar lets you quickly find web pages you have previously visited
- **Enhanced User Interface** - Mail interface includes a startup view that helps you get started in a particular email account more quickly, by providing one click access to your inbox, account settings, email filters, and more
- **Download** - Download interface lets you know where a file has been downloaded, and lets you launch the file directly from the download dialog box
- **Form Manager** - automatically fill an entire web form with your name, address and more, all in a single action, and not one field at a time

- **Email** - ability to use multiple email accounts to switch smoothly from your business to your personal identity while keeping your correspondences separate; add extra flavor to your messages with Emoticons: fun "smiley-face" images to add to your email and instant messages
- **Instant Messenger** - click a special Instant Messaging icon on a web page or in an email message to launch a chat session with a buddy or group

Power Through More Choice

One size does not fit all, so we've designed Netscape 6.1 so you can adapt it to your needs. You can choose which search engine to use, which tabs to include in My Sidebar, and what Instant Messenger screen name to use. You can even control the overall appearance of the user interface, or determine what operating system you use.

Here are some of the features in Netscape 6.1 that give you the flexibility to choose how you use the Internet:

- **Search** - integrate almost any search engine, giving you hundreds of choices
- **My Sidebar** - choose from hundreds of tabs from Netscape and third parties, including new tabs like History, Shopping and FedEx
- **Mail Accounts** - easy access to your multiple email accounts including Netscape WebMail, AOL Mail, as well as other IMAP and POP email accounts
- **Instant Messaging** - sign up for multiple screen names and choose which one to use anytime
- **Languages** - switch your browser software to support the content and language of your choice without restarting or downloading new software; now supports Hebrew
- **Operating Systems and Devices** - surf and send email with the operating system you prefer - Windows, MacOS or Linux

Safety With More Control

Many Internet users are concerned about their privacy and security online. Netscape 6.1 delivers more control over the privacy and security of your Internet experience than any other browser.

Some of the features in Netscape 6.1 that put you in control of your online privacy and security:

- **Cookie Manager** - choose which sites can set cookies and which sites to block through a dialog box on the site or within the Cookie Manager; easily view all cookies and selectively delete
- **Password Manager** - save time and trouble by letting Netscape's Password Manager remember and automatically fill in your username and password for specific web sites

- **Master Password** - set a Master Password so people who have access to your computer can not access your saved passwords or use them to access your personal information on the web

Supported Operating Systems and Minimum System Requirements

Windows	Macintosh	Linux
Windows 95, 98, 98SE, ME, NT 4.0, 2000	Mac OS 8.6 or later Mac OS 9	Red Hat Linux 6.0, 6.1, 6.2, 7.0 with X11 R6
Pentium 233 MHz 64 MB RAM 26 MB hard drive space	PowerPC 604e 266 MHz, G3, G4 64 MB RAM 36 MB hard drive space	Pentium 233 MHz 64 MB RAM 26 MB hard drive space

Netscape Navigator

The power of the Web working for you

Netscape Navigator, Netscape 6.1's web browser is now better than ever. Navigator enables you to get things done online more efficiently, provides you with more choice, and delivers greater safety with more control over your online experience.

Netscape Navigator provides you with a better web experience through improvements in Bookmark and History management as well as Search. In addition, the interface has been improved for better usability, can be customized to the way you use the Web, and can be given a look that suits your personality through the Themes feature.



A new and improved streamlined interface

The user interface of the browser has been updated and these improvements make the most important tasks easy to find, while at the same time freeing up more space for the

web page itself. The new design also provides a clear indication of which components you're using, enhancing overall usability.

Get things done faster on the Web

Netscape 6.1 loads web pages faster than before, but getting things done on the Web quickly isn't just about fast loading pages – it's about how efficient your browser is at completing the tasks you perform most often.

Whether you are adding a bookmark, looking for a previously visited page, or searching for something on the Internet, Netscape 6.1 helps you get things done faster.

Efficient Bookmark management

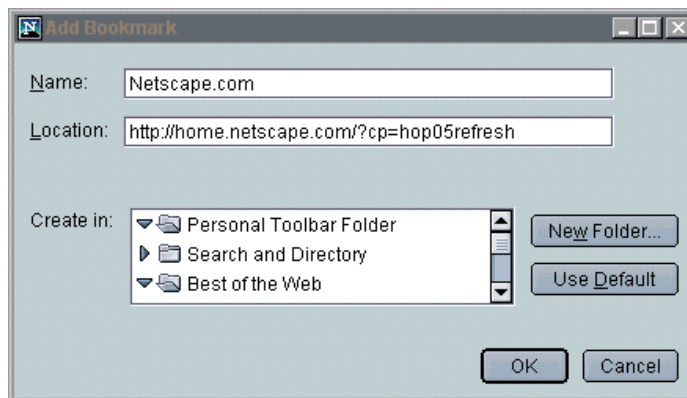
Navigator's improved bookmark management gives you more control and more choice than ever before.

You can easily add bookmarks in the Bookmarks Management window, Bookmarks My Sidebar tab, or Personal Toolbar. It's now simple to organize your bookmarks – file and edit them with ease.

Manage your Bookmarks the way that's best for you

Do you like to manage your bookmarks in a separate window that has in-depth functionality? Would you rather use bookmarks through a convenient My Sidebar tab? Or maybe you prefer the traditional bookmarks menu? Whatever you prefer, Netscape gives you more choice than any other browser when it comes to keeping track of the sites that matter most to you.

Bookmark management is fast and efficient as well. For instance, in Netscape 6.1 you will find the ability to drag and drop bookmarks exactly where you want them, including to the personal toolbar or directly from the URL field to the Bookmarks My Sidebar tab. The File Bookmark option is another easy way to add a bookmark in the location of your choice.



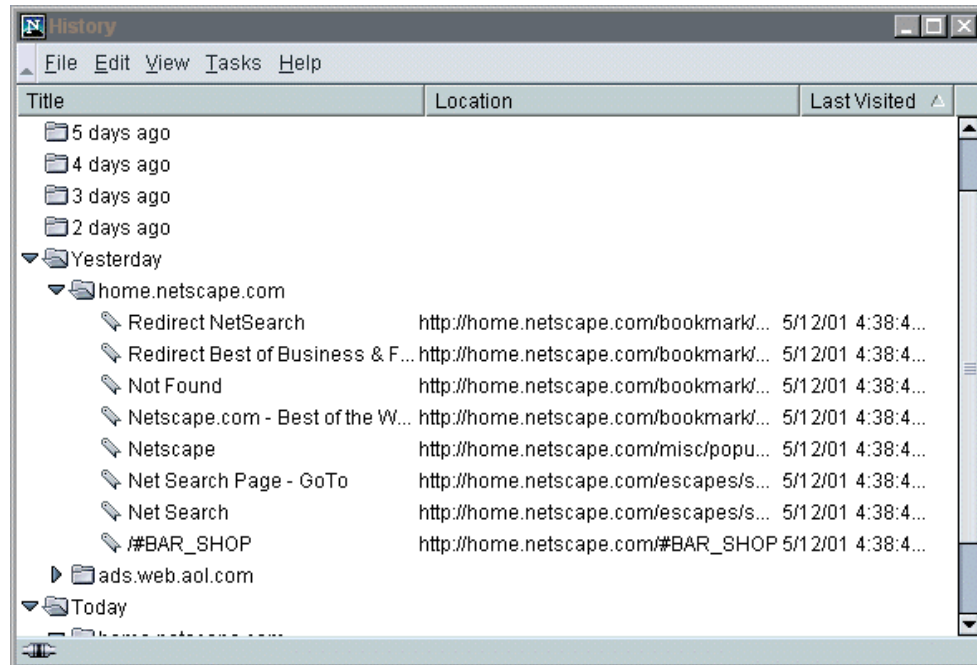
Netscape Bookmarks automatically use web page information to display the proper bookmark title, making this everyday process more efficient than ever.

Want to be extra-efficient? Try the Custom Keywords feature for bookmarks. From Manage Bookmarks, just select Properties and assign your own custom keyword to your bookmark. Then anytime you want to access that bookmarked page quickly, simply type your custom keyword in the browser's URL field.

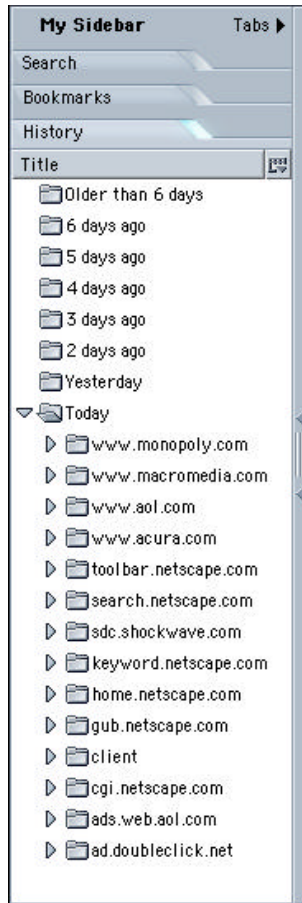
History management as a navigational tool

Netscape 6.1 provides you with full-featured history management, a great tool to assist you while navigating the Internet.

History keeps track of where you have been on the Web so that you can return to places of interest easily. You can sort your history in multiple ways, including by page title, web address, or when last visited, making it simple to find what you are looking for. In addition the "Search in History" option helps you locate particular entries quickly.



Just as with bookmarks, you have the choice between using this stand-alone history window with in-depth functionality or using the new History My Sidebar tab. The History My Sidebar tab gives you quick, convenient access to your history, allowing you to choose specific web sites from your history and see them displayed in the main window.



Remember that cool site you visited last week but can't seem to remember the web address? While you may not, Netscape Navigator history will. Simply open the history management window or My Sidebar tab and easily track down the site you're looking for. No need to 'temporarily' bookmark infrequently used sites anymore!

Powerful Search – fast and efficient

Searching is the number one activity while browsing the Web, and Netscape gives you the best tools to search faster.

The main toolbar URL field in Navigator can be used as a search field. That means that at any time, from anywhere on the Web, you can type what you want and click "Search" – you no longer have to take the time to load a search page. New for 6.1 is the ability to conduct searches from the drop-down autocomplete feature on the URL bar, making searching in Netscape 6.1 even more convenient and efficient.

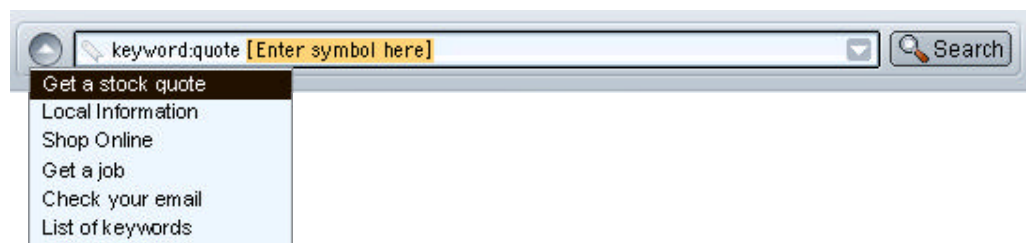
If you are looking for a specific type of information, such as an email address or business phone number and street address, use the Netscape Search menu. With just one click, you can access reference books (dictionary, thesaurus or encyclopedia), get directions, find a person or business, search for a product, or check a stock quote.

Your all-in-one entry field: Keywords, Type-in History, Autocomplete, and Search

This same field is your all-in-one entry field for browsing the Web. Not only does it support web addresses and searches, it also supports Internet Keywords. If it does not recognize what you type as a web address or keyword, it will automatically perform a search for you.

Internet Keywords help you get to the site you want quickly without having to remember complicated URLs. For example, simply type "Time" in the Search / URL field, press enter, and you are taken directly to <http://www.time.com>. You can also receive stock quotes, weather reports, movie listings and more, all by using a keyword.

The main toolbar field also offers instant access to some special keywords. Many keywords, such as "quote", "shop", and "zip" are really search shortcuts. Click the down-arrow button to the left of the URL field and select "Get a stock quote" or other phrase. Navigator will automatically type the correct keyword ("quote") and prompt you for any needed info ("enter stock symbol").



Of course, many of the web sites you visit are sites you have probably visited before. Not only does Navigator's history feature offer a listing of all the web pages you have visited, the URL bar also offers the convenience of Autocomplete and a list of what you have typed into the location bar.

When you type a web address manually, Navigator remembers that for you. To go back to that site quickly, click the type-in history button inside this main toolbar field and pick from the list. Since this list only contains what you have manually typed, it is short and very convenient to use.

Start typing a new web address, and Navigator will automatically complete it for you if it recognizes it. If you've already visited Netscape.com, for example, Navigator will fill in "netscape.com" for you when you begin typing "net". If there are other sites that you have already visited that also begin with "net" (like "net2phone"), Navigator brings up a list so you can choose one. Also included on this drop-down menu is the option of searching on the text you have entered.



Great search results

Search Results for 'geckos'

Partner Search Results

- [Bear Prints T-Shirts and Sweatshirts](#)
We carry a huge selection of designs on T-shirts and sweatshirts.

Web Site Categories 1 - 3 of 3
Groups of reviewed web sites related to your search term.

- [Geckos](#) - found in: Recreation > Pets > Herp > Reptiles > Lizards
- [Geckos](#) - found in: Science > Biology > Zoology > Chordates > Reptiles and Amphibians > Lizards
- [Breeders and Dealers](#) - found in: Shopping > Pets > Reptiles and Amphibians

Reviewed Web Sites 1 - 10 of 71
Web sites reviewed and categorized by a team of editors.

- [HeatherK's Gecko Page](#) **Editors' Choice**
Pictures, care sheets, books, and resources for the Gecko hobbyist. African fat tailed, Madagascar, and Leopard geckos are featured.
<http://www.geckopage.com/>

By default, Navigator uses Netscape Search, provided by Netscape.com. In a test by Search Engine Watch³, Netscape Search outperformed all other directory search offerings in delivering relevant results quickly and easily.

In general, people are not looking for more results but more relevant results. Netscape achieves this by using Netscape's Open Directory, the largest human edited directory on the Web. In addition, Netscape integrates its Smart Browsing service and its First Page Results system to deliver accurate and relevant search results on the first page.

My Sidebar Tabs ▶

Search

Search

using **Netscape Search** ▼

Search Results ▼

- [Bear Prints T-Shirts and Sweats...](#)
- [Geckos - found in: Recreation ...](#)
- [Geckos - found in: Science > Bi...](#)
- [Breeders and Dealers - found in...](#)
- [HeatherK's Gecko Page](#)
- [Dan's Leopard Gecko Info](#)
- [Lew's Leopard Geckos](#)
- [African Fat-tailed Geckos - The ...](#)
- [Gecko Inc.](#)
- [Lost World Reptiles](#)
- [Leopard Geckos Online](#)
- [Chameleons-N-Geckos](#)
- [Harford Reptile Breeding Center](#)
- [Leaping Lizards Day Geckos](#)

Bookmark this Search

Netscape's service also features next-generation search technology from Google Inc. While Netscape is ranked #1 for directory based searches, Google is ranked #1⁴ among search engines.

Netscape Navigator presents search results in multiple formats for maximum efficiency and usability. Netscape Search delivers its results in the main window of the browser. This enables you to immediately view details about each search result to help you quickly decide which to use.

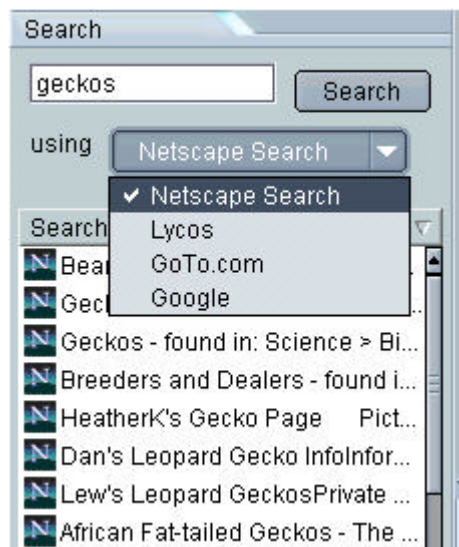
Simultaneously, the Search tab in My Sidebar automatically opens with a list of these same results so you can easily access them later. After perusing one site, you can try another result just by clicking it in the Search tab.

The search query also appears in the Search tab so you can edit it or repeat the search using a different search engine.

³ (September 1999, www.searchenginewatch.com)

⁴ Search Engine Watch, September 1999 ran its company name search test and ranked Netscape Search as the #1 directory and Google as the #1 search engine. More recently, in January, 2000, the Netscape Open Directory Project was named to the 1999 "Best of the Net" list by About.com's Guide to Web Search as one of top 10 tools, sites, books and other search related resources of the year.

Search using a variety of search engines



Netscape understands that sometimes people prefer a specific search engine. Navigator lets you pick from a variety of search engines, so that when you click the Search button, Navigator uses the engine you prefer. You can even search with multiple engines at one time!

My Sidebar in Navigator

Netscape Search is just one example of how My Sidebar keeps you connected to important information.

Another example of My Sidebar's value is the integration of your Netscape Instant Messenger Buddy List. You have instant access to your friends, family and co-workers online through the Buddy List without having to leave what you are doing.

You also have instant access to stock prices, news items and much more. My Sidebar is completely customizable, so you can add any of the hundreds of tabs offered from Netscape, or through the My Sidebar Network, or directly from other web sites such as CNN.

Improved download functionality

Netscape 6.1 makes downloading files of all types a snap. Improved download windows give you more information about the files you are downloading and give you the ability to choose how you handle the file. You can have all files of the same type open automatically or save to your hard drive.

Netscape also helps you find files on your machine after downloading. How many times have you downloaded a file and wondered where it landed on your computer? Navigator gives you the option after your download to show you where on your machine the file is located.

Faster Start Up with Quick Launch

The Quick Launch feature in Netscape 6.1 helps you get started faster by dramatically reducing the startup time of your browser. To turn on Quick Launch, open your browser, go to Edit | Preferences | Advanced, and click on the "Enable Quick Launch" checkbox. Note that Quick Launch is designed for use with a single profile on Windows only.

Navigator makes your privacy a priority

Password Manager, Cookie Manager, and Form Manager

Netscape 6.1 features a Password Manager that solves a problem everybody faces – how to keep track of all your login names and passwords for different web sites. The Password Manager addresses this problem by remembering login names and passwords for you and automatically filling them in on future visits to the sites.

Navigator can also automatically fill in lengthy online forms, saving you valuable time. For example, suppose you visit a web site and fill in a form that includes your name, address, city, state, zip, email address and more. You can ask Navigator to capture that information so the next time you run into a web page that asks for the same data, you can just click a button to automatically fill it in.

Cookie Manager in Netscape 6.1 is an easy-to-use, breakthrough feature that gives you more control over your privacy. It allows you to control how cookies are set and modified on a site-by-site and cookie-by-cookie basis. Only Netscape 6.1 gives you such easy and powerful control over cookies to better protect your privacy.

Check out the Safety section of this Reviewer's Guide for more details on these great privacy features!

Leading standards support for content and applications

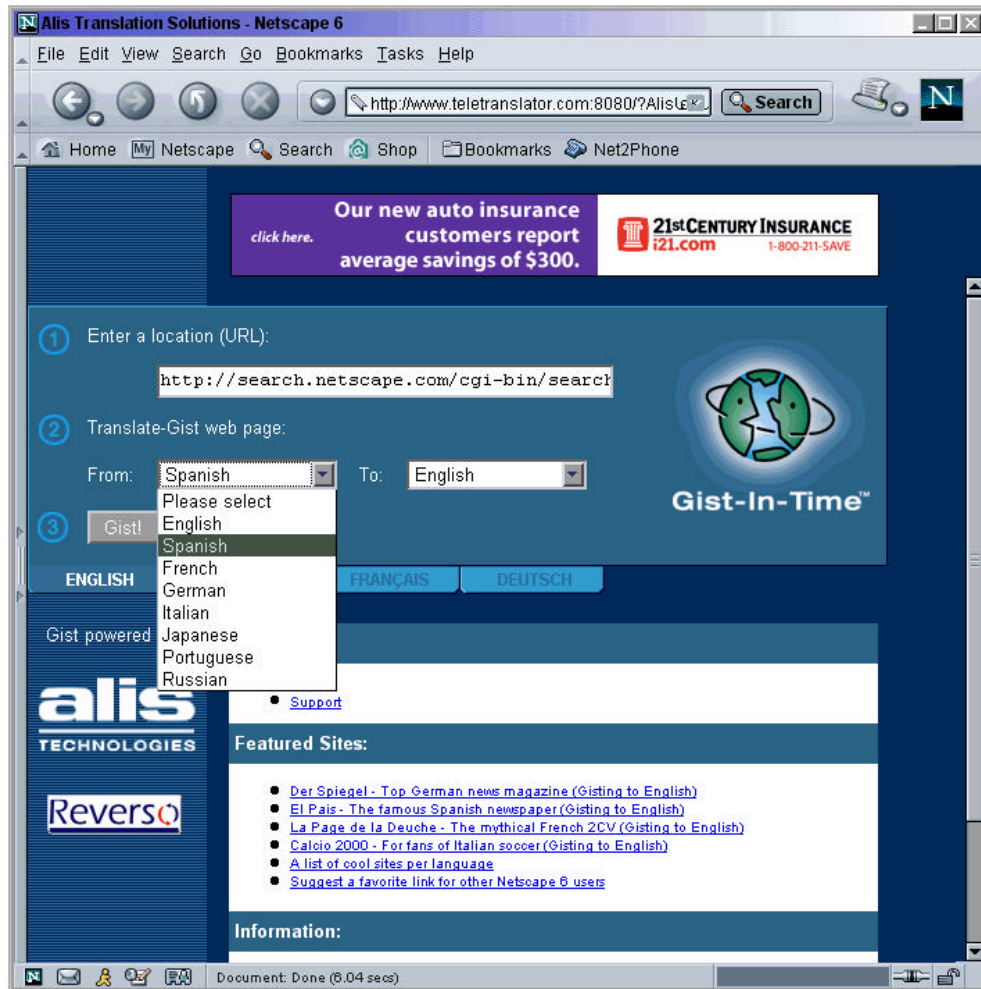
The most important task of a “browser” is just what the name says – to browse the Web. For this reason, Netscape has based Navigator on the innovative Netscape Gecko, its standards-compliant layout engine. For years, industry groups and content developers have been clamoring for a browser that adheres to currently accepted and approved standards for web content, and with Navigator, Netscape delivers on that request.

For web developers, Navigator simplifies the task of developing content by allowing them to adhere to a standardized set of rules, rather than learning a myriad of proprietary tags and implementations. For end users, Navigator offers a platform for the delivery of more powerful and interactive web content, services and applications.

With the new standards support provided by Netscape Navigator, the content, services and applications that the Web delivers can be far more powerful. Consistent, unsurpassed support for HTML 4, CSS, XML, RDF and the DOM means that richer and more compelling web applications can be developed. For the first time, web applications can have the kind of speed and functionality previously reserved only for client side applications. For more information, please refer to Appendix A: Standards Support and New Technologies in Netscape Gecko and Netscape 6.1.

Automatic translation of web pages for access to the global Internet

Translate web pages in a single click to your native language with the AutoTranslate feature in Navigator, based on Alis Technologies, Inc.'s Gist-In-Time service. Currently the majority of web content is in English, yet the non-English population on the Internet is increasing dramatically. This makes the translation functionality in Netscape 6.1 especially valuable to users in a global marketplace.



How AutoTranslate works

Simply browse to the web page that interests you. From the View menu, choose Translate. The language of the web page you were viewing will be automatically selected for you as the source language. Then choose the language you would like the web page to be translated into (the service remembers this for future translation requests). Click the Gist button to start AutoTranslate and in seconds the web page will appear with the text translated into the language you selected. Click any link in the translated page and the service will translate that page as well.

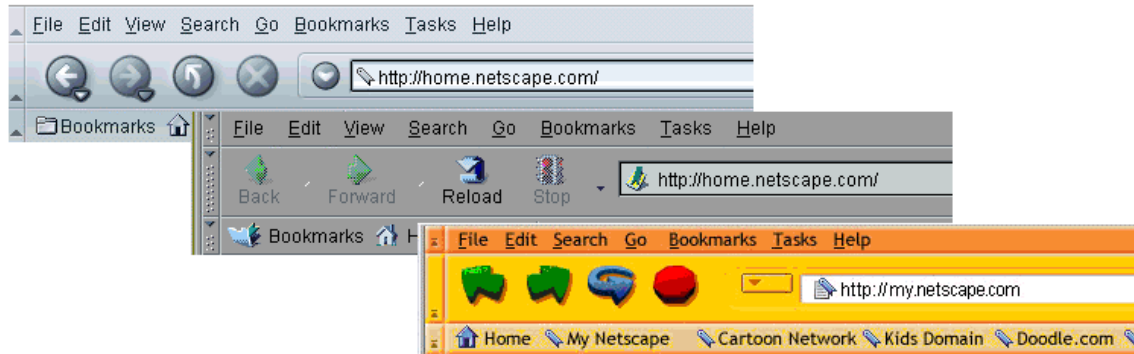
Languages supported by AutoTranslate

AutoTranslate offers you a wide selection of languages to choose from, and new languages will be added, as they become available. AutoTranslate currently translates:

TO English from Portuguese, Italian, German, Korean, Spanish,, French and Japanese.
FROM English to Russian, Portuguese, Italian, German, Spanish, French, Japanese, Traditional Chinese and Simplified Chinese.

Themes

Customize Netscape 6.1 to match your personality



The browser to fit your personality, not the other way around

Remember the old days when you had to adjust your style and life to fit in? You had to wear a suit to the office, start work at a precise hour and stare at a computer that had the exact same shape, color and content as every other computer. Now we wear casual clothes at the office, work flexible hours and have a variety of shapes and styles of computers to use for various professional and personal needs.

Netscape 6.1 can be as unique as you are. You can choose the "Classic" theme so the look of your browser is similar to the classic Netscape interface. With the click of a button, you can also switch back to the updated "Modern" theme which Netscape ships as the default look. Or install new themes from a web site or company that fits your style or mood.

Easy to switch themes

With Netscape 6.1, you don't have to download and reinstall a new browser or complicated application every time you want to switch the look. Install as many themes as you want, then use "Switch Theme" on the View menu to switch to that theme. It's that easy to switch back and forth from one theme to another. If you don't like one of the themes you downloaded, then remove the theme easily via the "Uninstall Theme" option in Themes Preferences.

Choose from a variety of themes

To demonstrate how easy it is to switch between themes, Netscape 6.1 ships with two pre-installed themes: Modern and Classic. Modern is the default look that ships with Netscape 6.1. Classic is a look reminiscent of earlier Netscape browsers.



Developers are also creating themes to fit their individual styles and brands. The next browser you get from your ISP, computer maker or IS department might already have a theme that matches their branding.

Check out the new “Toy Factory” theme, coming soon to the Netscape.com Theme Park, located at <http://www.netscape.com/themes>, a great example of how creative and different themes can be. You might also discover a theme at another web site – anyone can easily post their own theme for their customers or friends to install.

Easier to create themes with new tools and documentation

The Netscape Theme Park will have instructions for themes developers with updated documentation on how to create themes. There are also several new theme tools available to assist both designers and developers in the themes creation process.


Like the rest of Netscape 6.1, creating and changing themes is based on W3C open web standards. Developers can use web standards like XML and CSS to make changes or add functionality to their themes.

Themes are not just a feature for Navigator, the web browser. Themes can change the look of all the components in Netscape 6.1 including Mail, Composer and Instant Messenger. Themes also go deep into the look and feel of Netscape 6.1, changing the look of dialog boxes and menus, providing the freedom to totally customize the look of Netscape 6.1.

My Sidebar

Keeps you connected to what is important to you

Overview



The screenshot shows a web browser window with a sidebar titled "My Sidebar". The sidebar has a "Tabs" button with a right-pointing arrow. Below the title bar, there are two tabs: "Stocks" and "MapQuest". The "MapQuest" tab is active and displays the MapQuest logo and navigation buttons for "Driving Directions" and "Maps". Below the logo, there are two sections: "FROM" and "TO". Each section has a text input field for "Address or Intersection:", a text input field for "City:", a text input field for "State/Province:", and a dropdown menu for "Country:" with "United States" selected. At the bottom of the "FROM" section, there is a "Get Directions" button.

My Sidebar is *your* personal space to keep you connected to what is important to you.

Do you care about a particular stock price? Then customize your stocks tab so you can see how the price changes throughout the day. Perhaps you would prefer to track sports scores, check out your local weather or see which of your buddies is online to send an instant message.

My Sidebar belongs to you. you can customize the content and choose from hundreds of tabs by clicking on the Tabs button or add a tab directly from any web site or the My Sidebar Directory.

It is easy for site developers to create My Sidebar tabs because they are HTML pages. Like all web pages, anyone can create and host tabs and the architecture is completely open and built on accepted web standards.

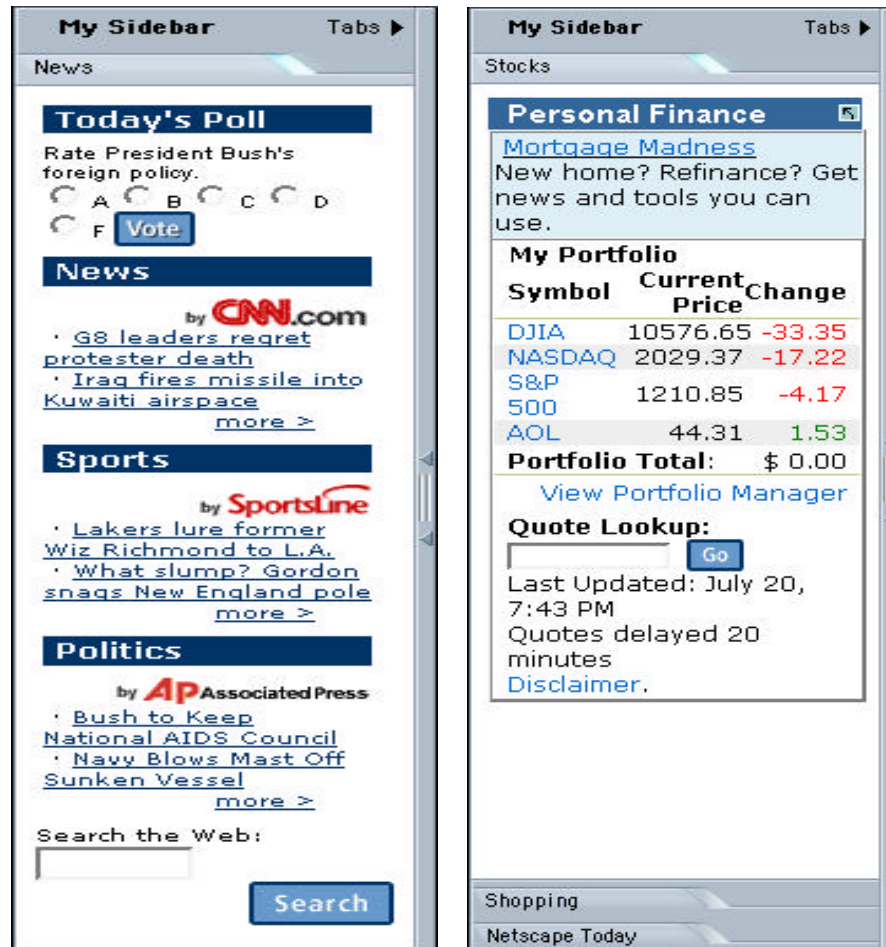
Not only do you get great content and tabs delivered by Netscape, but you can also get tabs from anywhere on the Web. CNN, FedEx, The Weather Channel, MapQuest, and hundreds of others from all around the world already have My Sidebar tabs that you can use today.

Check out the My Sidebar Directory for a list of hundreds of tabs you can use today plus the latest information on My Sidebar for users, web sites, and developers.

My Sidebar Directory: <http://home.netscape.com/sidebar>

It's yours, do what you want

Everyone is different, and everyone's My Sidebar can be different too. A student might listen to music while doing homework, a journalist might keep tabs on breaking news articles from various online sites, and an investor might track stock prices for a personal portfolio throughout the day.

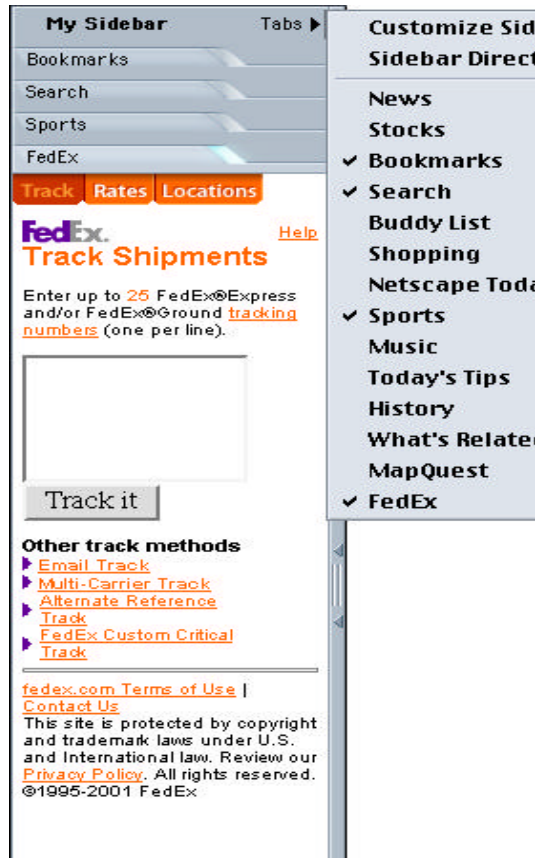


Easy to customize with hundreds of options

Just click the Tabs button in My Sidebar to choose from hundreds of tabs. Select from content that you may already be familiar with from My Netscape, such as stocks, news, horoscope, calendar and weather. Choose tabs that give you immediate access to features such as bookmarks, search results, browsing history and your Buddy List.

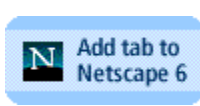
Include tabs from other companies such as FedEx, Real.com, and SlashDot. The list is still growing with tabs like local events, Sci-Fi News, JavaWorld, Delaware Fly Fishing, the ACLU and Freedom Network.

The tabs themselves can also be customized to fit your needs. For example, customize your stock portfolio tab in My Sidebar by clicking through a simple interface to list which stocks to track. Or customize your horoscope to your own birth date or the weather to your local area.



Because you can add as many tabs as you want, you might choose to hide some tabs to reduce clutter. Just click on the Tabs button, then uncheck any tabs that you want to hide, or simply right click on a tab header to hide a tab. The tab is still listed for you to view at any time, but it is hidden from My Sidebar to leave more space for your other tabs.

You can also choose to hide different tabs for each component, hiding some tabs in Navigator and exposing some in Mail. That gives even more flexibility for customizing My Sidebar.



You can also add tabs directly from web sites. Just look for the "Add tab to Netscape 6" button.

Always connected and up-to-date

My Sidebar tabs automatically update themselves throughout the day, so you know you are getting current news, weather, and stock information. Your Buddy List updates itself as your buddies go on and off line.

Fast and easy for content developers

Easy to create

Technically, My Sidebar tabs are just "skinny" web pages. And just like a web page, you can develop and host a My Sidebar tab yourself – there is no need for special instructions or permission to develop something for this entirely open platform*. Any web site content can be delivered as a tab, enabling content developers to leverage their existing web content.

To include an "Add Tab to Netscape 6" button for end users, the content developer can simply copy the JavaScript button available from Netscape. When the user clicks the button, the tab will be automatically added to My Sidebar.

* However, some copyrighted information may be subject to the restrictions of the original publishers. Please consult with the original publishers in these cases.

Very powerful

By using the new standards compliant platform in Netscape 6, a web page can also be extremely powerful. Via Netscape 6.1's open platform, developers can use XML, CSS, DOM, HTML 4 and RDF to develop powerful web applications for My Sidebar. And, since Netscape 6.1 supports the latest web standards, content developers have the power to include dynamic animation, graphics, and more.

These robust applications don't have to come from the Web, but can also run from the user's computer. For example, the Netscape Buddy List tab is actually delivered from the Netscape Instant Messenger application. Companies that create applications such as music players (RioPort and Winamp) can create them to work within My Sidebar.

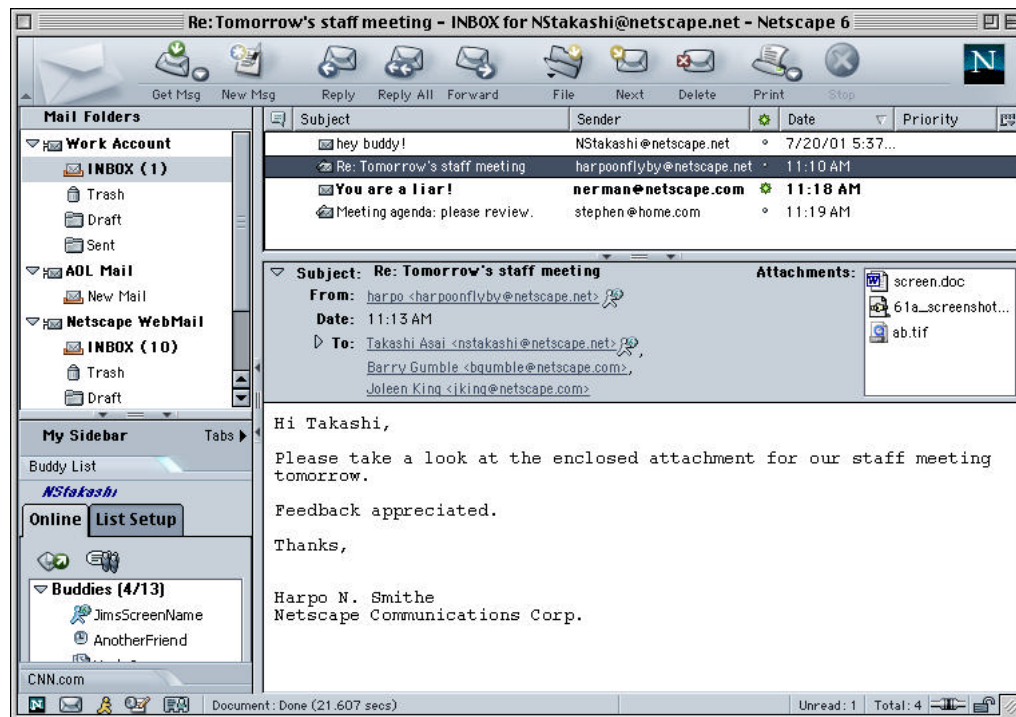
Accessible to users across the Web

Developers can submit their tabs to the My Sidebar Network and Netscape will include them in the My Sidebar Directory (<http://search.netscape.com/mysidebar.tmp>), the most comprehensive listing of My Sidebar tabs anywhere. It's open and free to all. Organized by subject categories and fully searchable by keyword, the My Sidebar Directory makes it easy for users everywhere to find and add tabs.

Netscape Mail

The best place to manage your Internet communications

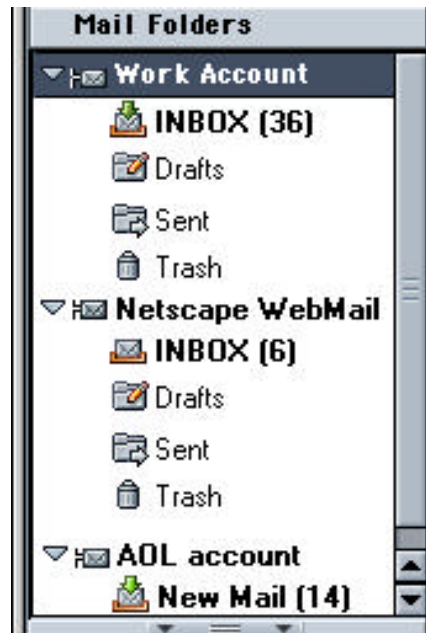
Overview



Netscape Mail lets you conveniently manage all of your Internet communications from one place. With support for multiple accounts – including AOL email and Netscape WebMail accounts – you can easily keep track of your business and personal email accounts and Internet newsgroups, all from one window. Integrated instant messaging lets you see when friends and colleagues are online and instantly communicate with them, and the new My Sidebar keeps you connected to the information that is most important to you while you're managing email. The redesigned Netscape Address Book keeps important contact information at your fingertips, and the new Email Address Collection feature automatically stores email addresses so you can more easily keep track of the people you communicate with. Netscape Address Book Sync allows you to access your contact information from any web browser. Netscape Mail is the best place to manage all your Internet communications.

Manage all your email accounts and newsgroups, including Netscape WebMail and AOL email accounts

More and more people have multiple email and news accounts, so Netscape Mail now provides support for multiple POP3, IMAP, and newsgroup accounts. You can access all of these accounts from the left-hand pane of Netscape Mail, without switching to a new profile.



Netscape WebMail users can now access their free email accounts directly from Netscape Mail. Setting up WebMail in Netscape 6.1 is easy. When you first launch Netscape 6.1, you will be asked to supply your Netscape.com user name. This process, called Activation, automatically configures Netscape WebMail for you. If you don't have a Netscape.com user name, signing up is simple and offers all the benefits of Netscape.com membership, including a free Netscape WebMail account.

You can even access your Netscape WebMail account when you go offline, so you can read your mail at your leisure.

In addition, millions of AOL users can now access their AOL email accounts from within Netscape Mail. Just type your AOL Screen Name into the Netscape Mail Account Setup wizard and Netscape Mail is automatically set up for you to send and receive email from your AOL account.

If you have multiple email accounts, you most likely want to keep your business and personal correspondence separated. Unlike other messaging products, Netscape Mail provides a separate Inbox and folders for each of your email accounts so that email from separate accounts stays separate. Netscape Mail also allows you to send email using any of your different "identities" making it easy to maintain this separation when sending email.

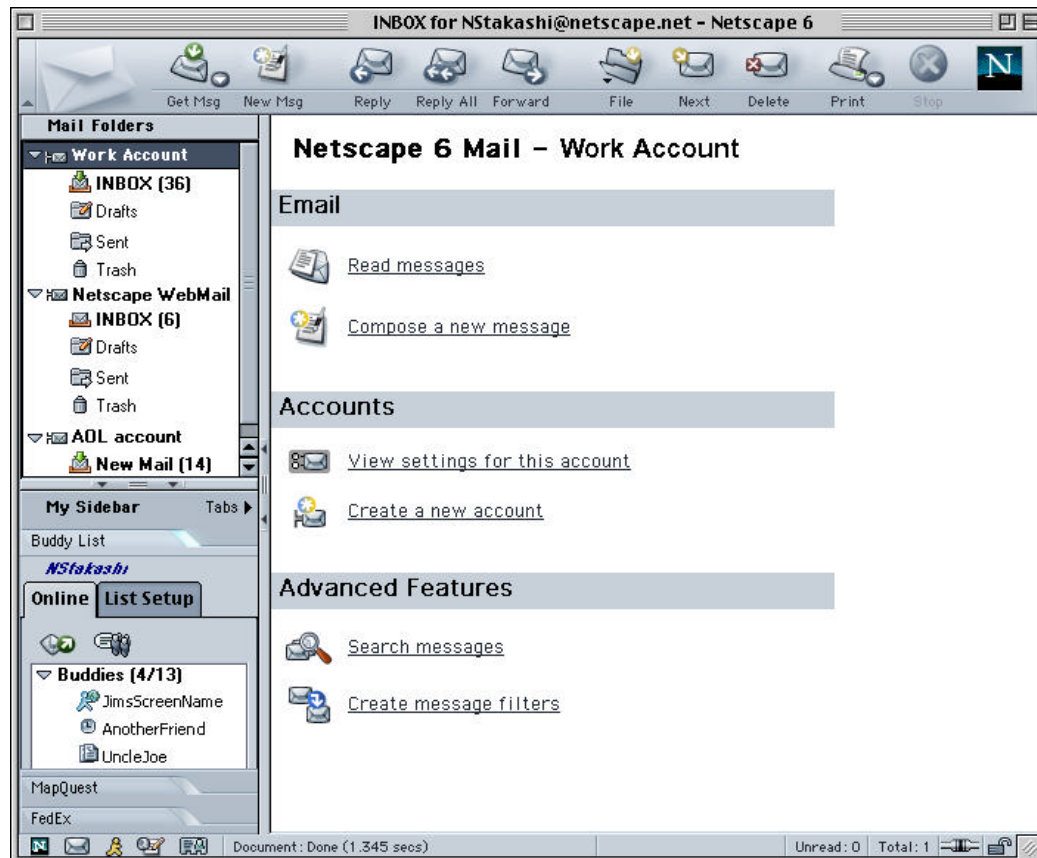
Managing email is easy with Netscape Mail

Creating a new email or newsgroup account in Netscape Mail is easy. The new Netscape Mail Account Setup wizard walks you through the process of adding additional Netscape WebMail, AOL, POP3, IMAP or newsgroup accounts to Netscape Mail.

With Netscape Mail you can manage a high volume of messages. We've fine-tuned the performance of Netscape Mail, so you'll never miss a beat, whether you've got 5 or 5000 messages.

Netscape Mail's three-pane interface makes managing email simple – all email accounts, email folders and newsgroups appear in a third pane on the left for convenient access and message management. Netscape Mail lets you create folders (and folders within folders) so you can store messages exactly the way that you want. You can easily collapse or expand any pane (including My Sidebar) to maximize screen space.

Netscape Mail can automatically move messages from any sender to a designated folder, or, in the case of unsolicited messages, to the trash! We've also made it easier than ever to navigate through Netscape Mail. We've made getting started with Netscape Mail easy. Simply click on the account level of any account, to see how easy it is to get started with Netscape Mail. You can perform many of the most popular functions within Mail: read your messages, write messages, set up filters, search your messages, and even check your account settings.



You can also manage your contacts directly from within an email message. Simply click on a recipient's name and:

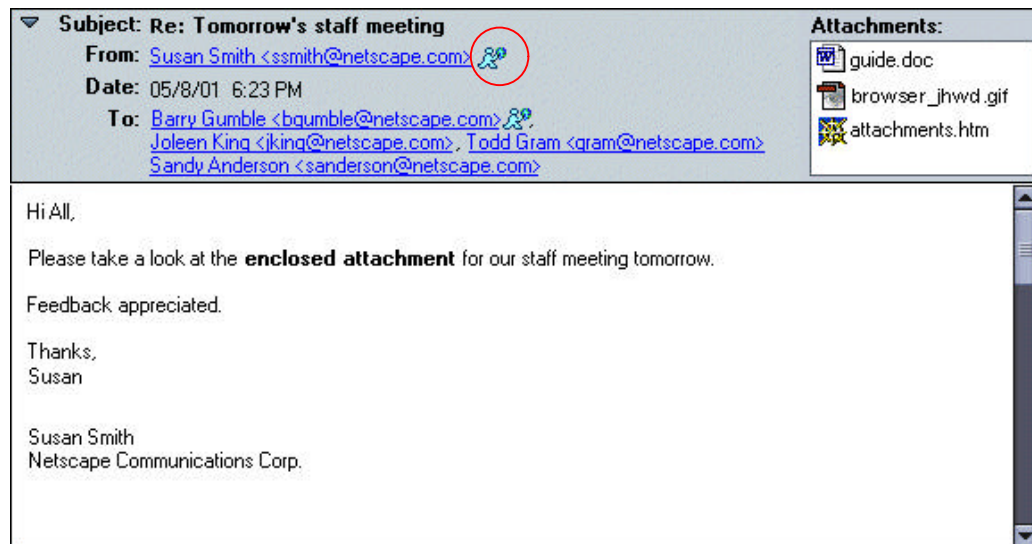
- ◆ Send them an email reply
- ◆ Send an Instant Message
- ◆ Add them to your Address Book or your Buddy List

Read IMAP mail messages while offline

Netscape Mail allows you to manage your email offline even if you are an IMAP user. (IMAP email is a server-based email protocol that traditionally requires a persistent connection to the Internet.) Now you can connect briefly, download your IMAP email messages, disconnect and read your messages while disconnected, including Netscape WebMail.

Integrated instant messaging

Netscape Instant Messenger, which lets you instantly communicate with your online friends and business associates, is tightly integrated with Netscape Mail. Netscape Instant Messenger is always available to you as a tab in My Sidebar, so you can keep track of online friends and colleagues while managing email. In addition, when reading a message in Netscape Mail, an instant messaging icon in the envelope of the message indicates whether the sender and other recipients are online (see *below*). Simply click the icon to begin sending and receiving instant messages.



Tired of playing email tag? How many times have you read an email, sent a message back asking for a clarification, waited for the reply, and finally responded. With the integration of Netscape Mail and Netscape Instant Messenger you don't have to wait any longer. Look in the message envelope or header to see if the sender (and other message recipients) are online and available for a quick chat. With integrated instant messaging, you can solve issues in seconds that would have taken more time and multiple emails.

My Sidebar and Netscape Address Book put information at your fingertips

My Sidebar



My Sidebar offers an ideal way to stay connected to the information that's important to you. Many users "live" inside their email application, so Netscape Mail provides My Sidebar tabs that make it easier for you to keep track of stocks, news, and other information, all while managing your communications.

My Sidebar is easy to customize, with hundreds of My Sidebar tabs to choose from that can be updated throughout the day.

Netscape Address Book

The Netscape Address Book has been redesigned to make it easier than ever to keep track of important contact information. The new three-pane design allows you to quickly view all your important contact information for a person by simply selecting an Address Book card.



Address Book Sync

Now it's easier than ever to access your important contact information from any computer connected to the Internet. With Netscape's Address Book Sync feature, you can synchronize your Netscape Personal Address Book with the Netscape WebMail Address Book or your AOL Address Book and access your contact information on the Web, using any web browser.

If you're on the road and need an important address or phone number, since you've synched your Netscape Address Book with your Netscape WebMail Address Book, your address book is available through your Netscape.com or AOL account. Simply log in to Netscape.com from a remote computer, and the information is at your fingertips.

Netscape Address Book automatically collects addresses

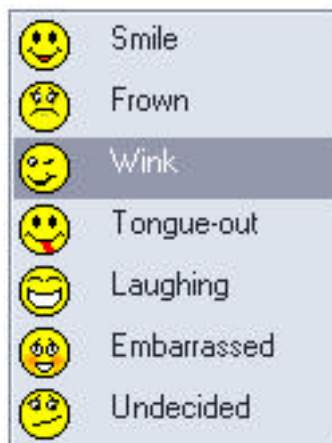
Netscape Mail's Email Address Collection feature automatically collects and stores the email addresses of the people you correspond with. Whenever you read an email message, the name of the sender is automatically stored in a "Collected Addresses" address book, separate from your personal address book. When writing an email message, simply begin typing the recipient's name to address the message. Netscape Mail automatically looks up the name in the "Collected Addresses" address book and fills in the recipient's email address for you.

How many times have you found yourself searching through your Inbox and email folders to find the address of someone you need to send a message to? With Email Address Collection, you don't need to do this – Netscape Mail has already done the work for you by storing the information you need. Easily find an email address by typing the recipient's name in the message compose window. Netscape Mail looks up the email address for you.

High performance Internet messaging

In addition to these features, Netscape Mail continues to deliver high performance Internet messaging, with full support for key Internet messaging standards such as POP3, IMAP, SMTP and NNTP. Netscape Mail is speedy too: it's built on the same high performance Gecko engine as Netscape Navigator. Also, Netscape Mail is small, adding only about 1.2 MB to the Netscape 6.1 download size on Windows machines. Yet even with this small size, Netscape Mail delivers all the features you need in an Internet messaging product, including richly formatted HTML message composition with improved attachment handling.

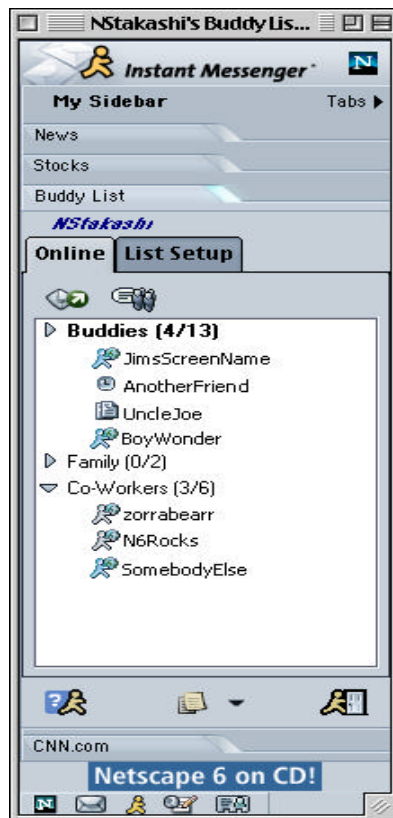
How are your "emoticons?" We've added a handy menu item in Netscape 6.1 Mail's compose window that allows you to point and click to choose cute little "emoticons" to include in your email messages, just like you would in your Instant Messenger.



Netscape Instant Messenger

Stay connected to the people who are important to you

Overview



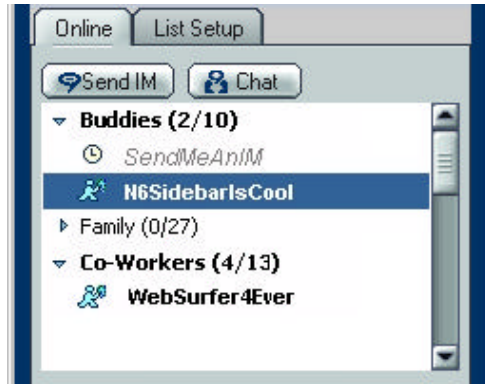
Netscape Instant Messenger lets you stay in touch and instantly communicate with your online friends and business associates. Instant messaging is integrated with mail and browsing, and is also available as a standalone component.

With Netscape Instant Messenger, you can instantly send private, one-to-one messages or chat with a group of people in the world's largest online community. You can also see when your friends and business associates are online using your personalized Buddy List, which provides you continuous updates of their online status. Using Netscape Instant Messenger, you can see if a colleague is online and, for example, send them an instant message to invite them to lunch. A window appears on your colleague's monitor and displays your lunch invitation.

Instant messaging is also becoming an important business tool for negotiations, real-time reminders, or any time email isn't fast enough.

Keep track of online friends with your Buddy List

Netscape Instant Messenger provides the Buddy List feature so you can see when your friends and business associates are online. Hover over the name of an online buddy to find out if they are "active" and how long they've been online.



Use the List Setup feature to personalize your Buddy List by adding, deleting, or modifying the group of online friends and colleagues you want to keep in touch with.

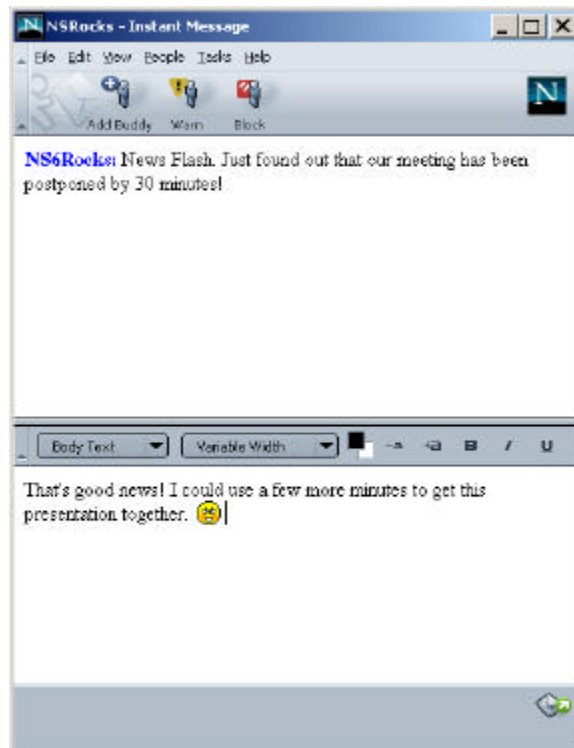
Customize your own Buddy List groups in addition to the default groups. Place buddies into groups, which can be expanded or collapsed for easier viewing.

Check Buddy List icons and highlighting to find out whether your buddies have logged into the Instant Messenger service, and if they are working at their computers.

Access the Buddy List from other Netscape 6.1 components, such as Netscape Navigator, by selecting Instant Messenger from the Tasks menu, or by clicking on the Instant Messenger icon in the Netscape 6.1 Task Bar. You can also access your Buddy List as a tab in My Sidebar from any other Netscape 6.1 component.

Send private instant messages in real time

Initiate an instant messaging session with an online buddy simply by clicking on the buddy's name in the Buddy List and entering your message. A window appears on your buddy's computer that contains your message. Your buddy can reply by typing in the message window, and can add you to his or her Buddy List with the click of a button. You and your buddy can continue to exchange private messages in this message window.

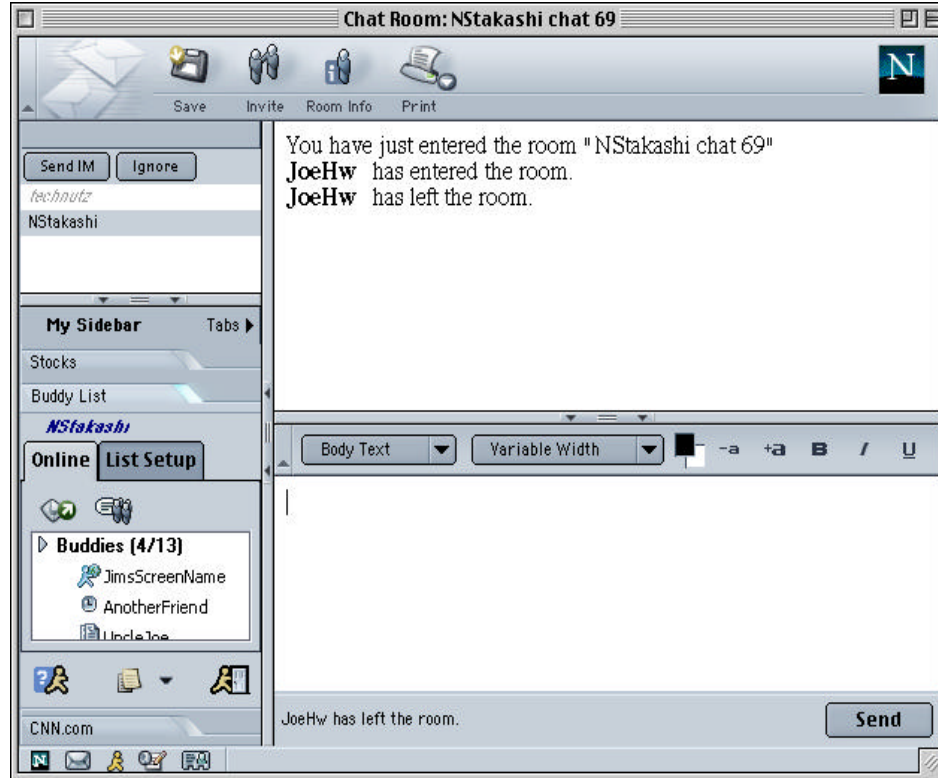


You can format text and paragraphs, and add color and web links in your messages.

Easily add a buddy to your Buddy List from the chat window or the message window by clicking the Add Buddy button.

View personalized information such as stocks, news, and sports with the integrated My Sidebar.

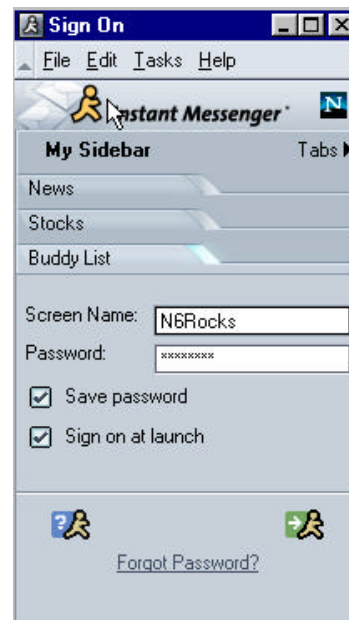
Chat with one or more buddies



Initiate a Buddy Chat session with one or more online buddies by clicking the Chat button. Invite more buddies to join your chat as you see them come online.

Support for multiple screen names

With Netscape Instant Messenger, you can switch screen names between sessions. If you work at home, you may have a work screen name to communicate with your business associates during the day and a home screen name to send instant messages to friends and family in the evenings.



Access your Buddy List from anywhere

Netscape Instant Messenger stores your Buddy List on a server, which means you can now access your Buddy List from a friend's computer using Netscape Instant Messenger, without retyping any of your buddies' screen names. Make a change to your Buddy List on your friend's computer and it also appears on your own computer.



Automatic importing of previous Buddy List

Netscape Instant Messenger initially displays a Migration Wizard to help set up your instant messaging account with information such as your screen name and password. In addition, you can choose to import your buddy list from any existing AOL Instant Messenger (AIM) software on your computer.

Change away message status dynamically

When you are away from your desk or just too busy to reply, you can easily inform your buddies. By clicking the Away button, you can change your online status to "Unavailable", "On the Phone", "Out to Lunch", "Meeting", or create a message yourself.

Buddy presence everywhere

Access your buddy list from other Netscape 6.1 components, including Navigator, Mail and Address Book by using the Buddy List tab in My Sidebar.

Chapter 6

Netscape Composer

The easiest way to create web documents

Overview



You don't have to know HTML to use Composer. Netscape Composer lets you easily and quickly create standards-compliant web documents. You can add lists, tables, images, links, and font styles to your document by clicking on toolbar buttons. Composer can be used to create common documents such as memos, resumes, and reports.

Standards-compliant WYSIWYG web document editing

Since Netscape Composer is built on top of the Netscape Gecko layout engine, you get the first standards-compliant WYSIWYG (what you see is what you get) HTML editor. There's no need to switch back and forth from Netscape Composer to Netscape Navigator to make sure the images, links and tables display correctly. As you type, you will see exactly what others will see when reading your document.

Create web documents as you would in a word processor



Composer provides a toolbar with quick and easy access to the most common editing features:

- Bolding, italicizing and underlining characters
- Changing font styles, color, and size
- Including links, images, and tables
- Inserting bullets and numbered lists
- Spell checking

You can create an HTML document as if you were using a word processor without knowing or writing a single line of HTML.

Easily share web documents with others

Web documents created with Netscape Composer are ideal for sharing.

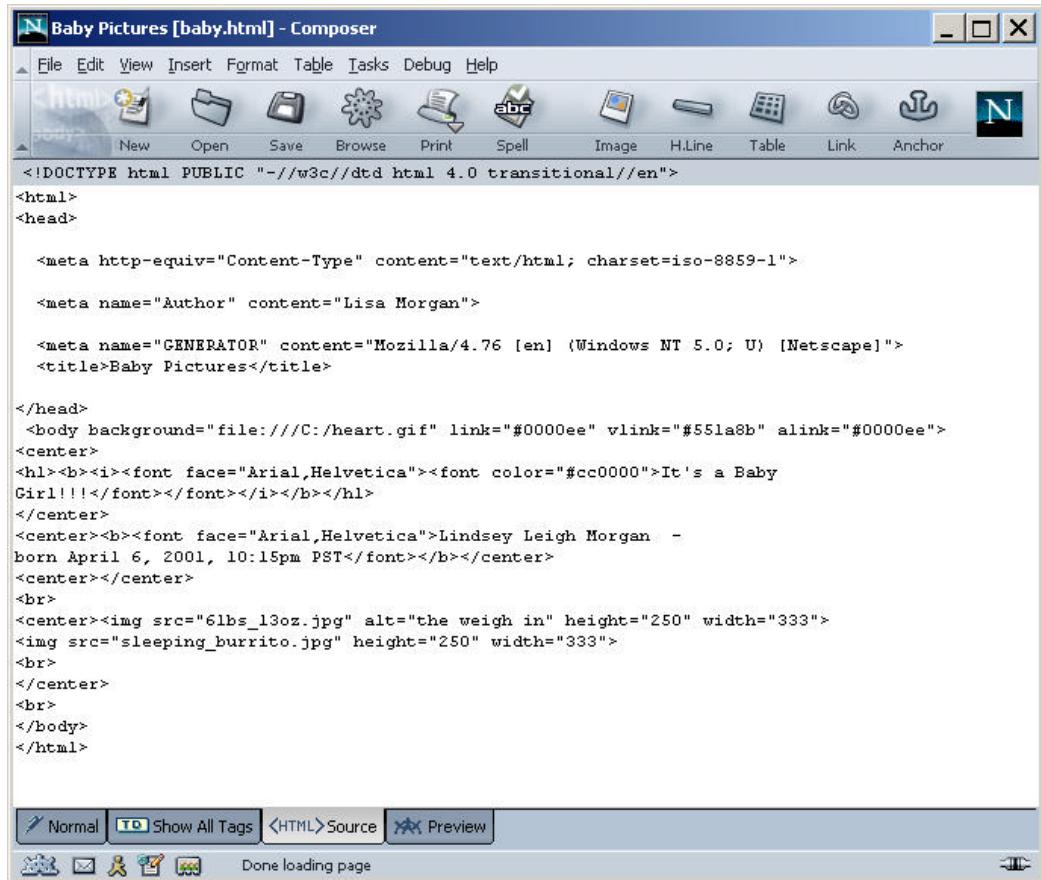
The file size for a web document is typically 90% smaller than a similar document created with a word processing application such as Microsoft Word® or WordPerfect®. Recipients who read email messages created with Composer don't have to waste time downloading large word processing file attachments anymore.

Recipients of an attached web document can read the document in their HTML capable email application (such as Netscape Mail). They do not need to save the file and launch a separate application.

Standards-based web documents created using Composer can be viewed in any standards-compliant browser (e.g., Netscape Navigator) across platforms including Windows, MacOS, and Linux.

Advanced HTML Editing Toolbar with HTML Source Tab

To use Netscape Composer, you do not need to know HTML. As you become more advanced, you may want to modify the HTML code directly. With the new HTML editing toolbar, advanced users can use the HTML Source tab to modify their HTML code.



Safety

Enhanced Security and Privacy

Overview

Many Internet users are concerned about their privacy and safety while online. People think a great deal about the safety of their online environment and want to know what they can do to maximize it.

At Netscape, our goal is to give you the tools you need to browse the Internet with confidence. Netscape browsers offer a robust and secure architecture to let you feel safe, combined with a host of features and useful tools to help give you the control you need to protect yourself online. With Netscape 6.1, we've added several features that enable you to better protect the information stored on your computer, both from those on the Internet and from co-workers and family members who may share your desktop computer with you. No other browser delivers the same level of control that Netscape offers with features like the Cookie Manager and Master Password.

A long history of security development

For years, Netscape has led the development of security standards used today by leading browser and server applications on the Internet. Netscape invented the Secure Sockets Layer (SSL) protocol for encryption and authentication, implemented the first widespread commercial use of X.509 v3 public key certificates, and has a long-standing commitment to the Public-Key Cryptography Standards (PKCS), published by RSA for object signing, smart cards, and a variety of other security features. The security features included in Netscape 6.1 are built on fully open-source Network Security Services (NSS) code. Over the course of the past six years this code has been enhanced and strengthened, and is now used in all Netscape client and server products.

In short, Netscape security is not thrown in as an afterthought, but is rather the result of years of research and development.

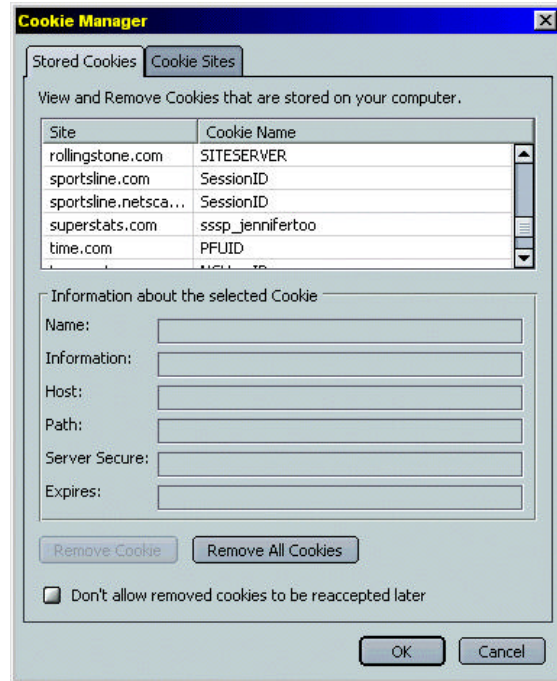
The control you need

Take advantage of features to help you protect your personal passwords, organize your security certificates, manage cookies, and restrict access to your personal information when others share your computer with you.

Cookie Manager

Cookie Manager in Netscape 6.1 is an easy-to-use feature that allows you to control how cookies are set and modified on a site-by-site and cookie-by-cookie basis. This control is important because you may want to permit the use of cookies from familiar and trusted sites, since cookies allow the site to provide you with custom, personalized content. On the other hand, you might want to disable cookies from sites with which you are not familiar or do not trust.

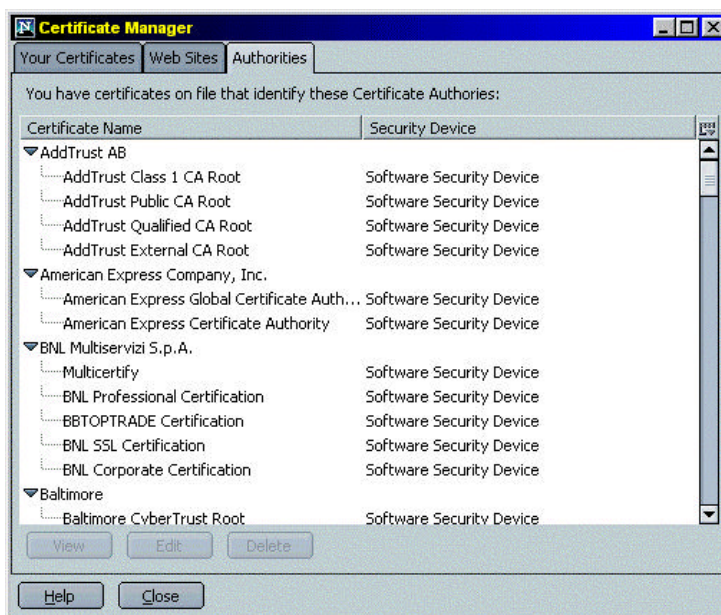
Only Netscape 6.1 gives you such easy and powerful control over cookies to better protect your privacy.



Netscape 6.1 offers various preference settings for additional cookie control. For example, like earlier versions of Netscape Navigator, one option is to “Accept cookies that get sent back to the originating server only”. This option allows you to block cookies that are dropped by a third party. You can also choose “Warn me before accepting a cookie”. You may not want repeated warnings interrupting your work and instead prefer the custom controls of the Cookie Manager.

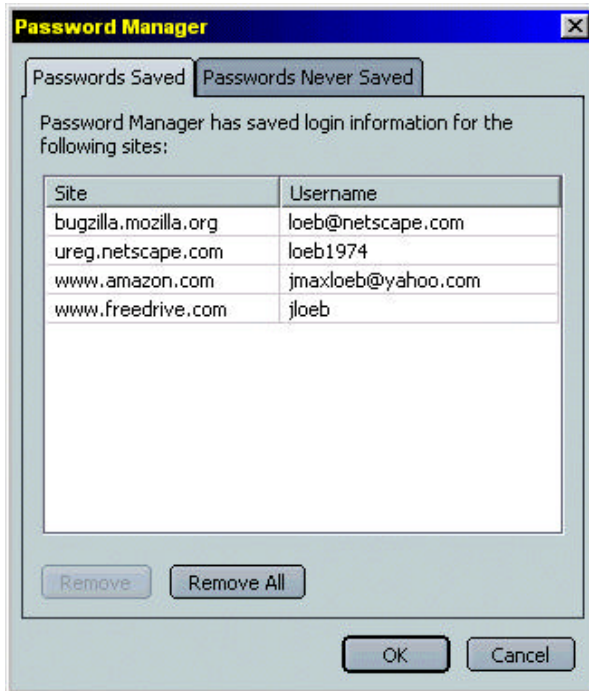
Certificate Manager

Much like a credit card or driver's license, a certificate is a form of identification you can use to identify yourself over the Internet. Similarly, secure web sites (such as those you would purchase goods from) use certificates to certify that they are the organization (Amazon, eBay) that they claim to be. Certificates are usually issued by organizations with recognized authority to issue such identification. Your Netscape browser will scrutinize a merchant's certificate so you can determine that the merchant is who he says he is, and, similarly, a merchant may scrutinize a user's certificate for the same reason. With a host of features and security advances, Netscape allows you to easily view and manage all the certificates you encounter on the Internet.



Password Manager

Netscape 6.1 features a Password Manager that solves an issue many users face – how to keep track of all login names and passwords for different sites. The Password Manager addresses this issue by remembering login names and passwords for you and automatically filling them in on future visits to the sites.



You have complete control over which login names and passwords you want the Password Manager to remember. You choose on which sites to use the Password Manager and on which sites not to use it. Do you have more than one account at a particular web site? Password Manager can remember multiple username/password combinations.

Master Password



Do other people have access to your computer? Encrypt the passwords stored on your computer with a Master Password, and prevent others from logging on to your password-protected sites. The Set Master Password dialog includes a Password Quality Meter ("bad" to "good") to help you select a particularly secure password.

Netscape 6.1 Speaks Your Language

Better support for international users; greater choice for experiencing a global Internet

In just a few short years, the Internet has seen explosive international growth, both in the number of users (non-US users of the Web are now the majority.⁵), and in the volume of web content created for other languages. Netscape recognizes this trend and has delivered a browser specially designed to meet the needs of a global community of users. Netscape 6.1 enables more than 99% of today's Internet users to more efficiently view and create content in their native language⁶.

Customize with language or regional content packs

Netscape has introduced a powerful and flexible new feature in Netscape 6.1 that allows you to customize the language of the browser interface, or even the content and services that are displayed. With Netscape 6.1, specify your preferred language and set it to your region of the world so the Web is easily accessible in whatever language you speak, and more importantly, specific to your chosen geography.

Because not all Spanish speakers live in Spain...

If you are a Spanish, German, Japanese or French speaker living and working in the United States you may want to use a browser that's in your native language. However, when you click "Search" or "Shop", you'll likely prefer a US Search engine, or US shopping service. With Netscape 6.1, you can switch to the Language or Region Pack of your choice. Choose from a variety of languages and regions of the world. From the "View" menu, select "Set Language/Region". If your desired Language Pack is not already installed, click "Download more" and choose a Language or Region Pack from those offered on Netscape.com. Then, restart Netscape 6.1 to see the changes.

Packs available for Netscape 6.1

Language Packs: English, Japanese, German, French and Spanish.

Region Packs: United States, France, Germany, Japan and Spanish/ Latin America.

Support for Hebrew

Netscape 6.1 expands you're the choice of web sites you can visit by introducing support for Hebrew. This language requires that text display from right to left, instead of left to

⁵ Source: eGlobal Report, eMarketer January 2001

⁶ Source: GlobalReach (www.euromktg.com/globstats)

right. Netscape 6.1 supports this in Composer, Mail, and Instant Messaging in addition to Navigator so users can not only browse a Hebrew site, but compose an email or engage in individual or group chat sessions in this language. In addition, Netscape 6.1 supports viewing Hebrew and English characters at the same time, selecting text between these writing systems, and viewing Arabic on native Arabic windows machines.



Multiple languages supported for browsing, mail and instant messaging

From Japanese to French to Russian to Greek, web pages in a variety of languages are at your fingertips with Netscape 6.1. Tell the browser which character sets you need most often, or set the Character Coding under the View menu to “Auto-detect All” to automatically display the correct international character sets. Netscape 6.1 will do the rest. For Windows users, Netscape will even find the right font for you from your hard drive or find it on the web to download.

In addition, thanks to its full support of Unicode 3.0, Netscape 6.1 allows users to view multiple languages and character sets at the same time while browsing or editing web pages and bookmarks. View mail titles and the names of senders even if they’ve been written in several different languages. You can even chat in Netscape Instant Messenger in a mixture of English and Japanese character sets at the same time.

Global IME (Input Method Editor) support

Netscape 6.1 takes advantage of the presence of a Global IME (also known as “Active IME”) to allow users of any Windows system to input Chinese, Japanese and Korean characters. For instance, users of English Windows can now input Japanese characters without installing a Japanese version of Windows on their computer. Additionally, Japanese Windows users can input Chinese and Korean characters and vice versa.

International versions and platforms of Netscape 6.1

- United Kingdom Windows
- Japanese Windows
- German Windows
- French Windows

Please note that French and Spanish Windows plus Macintosh and Linux versions of German, Japanese, UK and French browsers will be available within 30 days after final ship.

All versions offer the ability to add British, French, Japanese, German and other “My Sidebar” tabs using the Add Tab function and selecting the “International” folder.

An expanded list of languages and platform versions will be offered in partnership with vendors such as Sun Microsystems. In addition to the planned localization of the Netscape commercial product, there are more than 40 localization projects for the Mozilla browser underway at Mozilla.org (http://www.mozilla.org/projects/l10n/mlp_status.html).

Extras

Get even more out of the Internet with industry leading additions

Overview



Netscape 6.1 offers cutting-edge add-on applications that help you get more from the Internet. Offered with Netscape 6.1 are Java for running web applets, Nullsoft Winamp for audio playback, RealPlayer8 for streaming media, Macromedia Flash for high impact web content and Net2Phone for making inexpensive calls to anywhere from your PC.



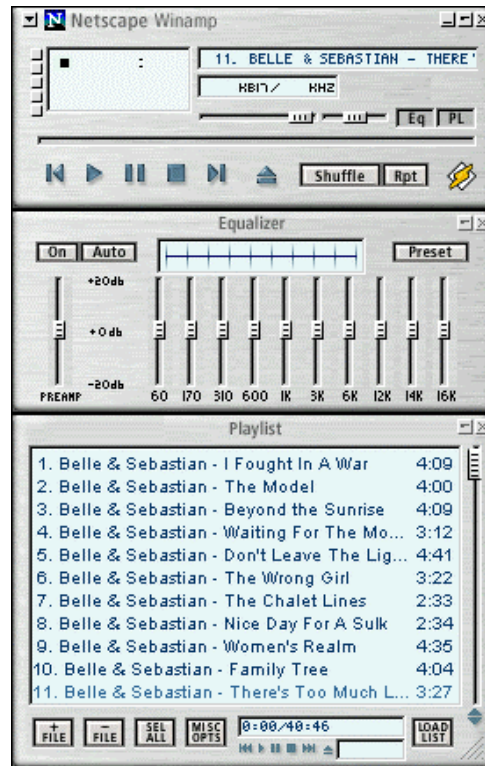
Industry leading Java from Sun integrated into Netscape 6.1

The Java plug-in from Sun Microsystems allows you to run applets on the Web, making your Internet experience richer and more powerful. Java is included automatically in the Full configuration of Netscape 6.1, and you can choose to install it in Custom configurations as well.

The Java plug-in is available for Windows, and features complete Java 2 support. On MacOS, Netscape 6.1 integrates with Apple's MRJ (MacOS Runtime Java).

Multimedia support from the names you know

Winamp Media Player



The original audio player, Winamp plays all kinds of audio files, including your MP3s. Play CDs, organize your music, create playlists, or even listen to SHOUTcast Internet radio.

Winamp is available for Windows and is included in both the Full and Custom installations of Netscape 6.1.

RealPlayer 8

With RealPlayer 8, the leader in streaming media, you can experience the broadest range of audio and video (A/V) content on the Web. New features make it easier than ever to quickly find the programming you want and deliver the highest-quality A/V.

RealPlayer8 is available for Windows and Mac OS and is included in both the Full and Custom installations of Netscape 6.1.

Macromedia Flash

Macromedia Flash is a browser plug-in that gives you a more engaging experience on the many sites that use Flash technology. Flash enables interactive content with integrated vector and bitmap graphics, motion and MP3 audio, even over low-bandwidth connections.

Every configuration of Netscape 6.1 contains a small Flash program that helps you easily install the full Flash plug-in the first time you need it. The latest version of Macromedia Flash, Flash 5, is available for Windows and MacOS.

Net2Phone saves you money on telephone calls

Net2Phone, by Net2Phone, Incorporated, allows you to use your computer to inexpensively place domestic and international calls to any telephone in the world. Using this application, you can save up to 95% of the cost of traditional long distance calls worldwide.

Net2Phone is integrated into the user interface of Netscape 6.1 for convenient access. The Complete configuration of Netscape 6.1 has the full Net2Phone application ready to run, and other configurations allow you to easily obtain the product.

This program is available for Windows.

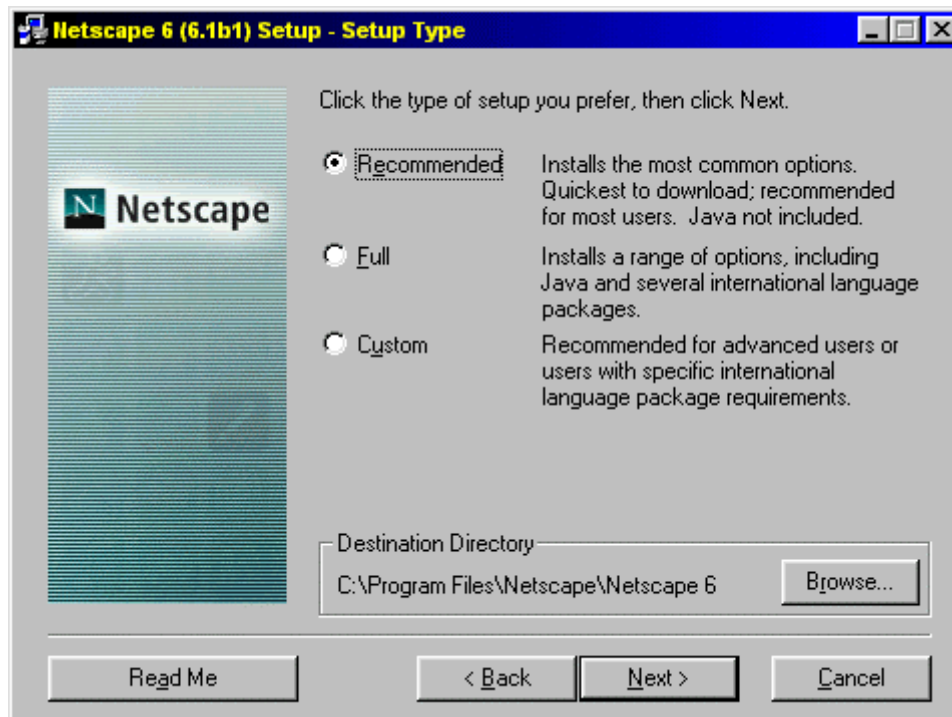
Print Plus for expanded printer services

The integrated Print Plus menu offers links to various printing services provided by Netscape and Hewlett Packard (HP). These services make it easier for you to order business cards, school supplies, special printing paper, printer cartridges, and other supplies online for your HP or non-HP printer.

Installer

Quickly and easily download and install the components you want

Overview



The Netscape 6.1 experience begins with an improved installation process. We've drastically reduced the size of our software to speed up the download experience. We've incorporated download pause and resume functionality and the ability for you to recover your download if you lose your Internet connection. We've also set up the installer so that only the portions of the product you choose to install are actually downloaded – you never download software you don't need. And finally, we've built installation capabilities right into Netscape 6.1, enabling users to install updates directly from the Web.

Small, fast installer with integrated download

Customers who download Netscape 6.1 will notice an immediate difference with a fast and intuitive download and installation process.

Small installer

Netscape 6.1 has an installer that is under 300k in size. It downloads quickly and provides immediate access to your installation choices. Netscape 6.1 also reduces the number of choices you must make before installation begins. Netscape will be offering one installer per language, which provides all installation options in a single package.

All of the required input in the installation process takes place up front. Once you make the choices presented to you in the installer, everything proceeds automatically, and you are left with Netscape 6.1 up and running, ready to use.

Download pause and resume

Have you ever needed to make a phone call in the middle of a download? With Netscape 6.1, you can pause your download, and then resume after you have finished your call. Netscape 6.1 also helps you recover your download if your Internet connection is dropped, without requiring you to restart the download from the beginning.

Only download what you need

Because the Netscape 6.1 installer presents you with installation choices up front, you will never download software you didn't choose. In the past, users downloaded an installer package that contained all the possible software choices. Only after the package was on their desktop would the user be given the choice of what options they wanted. With Netscape 6.1, you choose up front and get only what you need.

Installer "Engine" built into Netscape 6.1

Most installers are stand-alone applications that can perform a single installation and are then discarded. This can account for between 500K and 1MB of wasted space in a download. Netscape 6.1, on the other hand, has an installer engine built right into it, so there is no wasted space. In fact, after downloading the necessary software, the installer uses Netscape 6.1 to install itself.

The installer engine built into Netscape 6.1 has been updated from previous versions of Netscape software to make web-based installation services such as Netscape.com's SmartUpdate even more powerful and reliable. It enables Netscape.com to tailor software offerings to your specific machine and operating system environment.

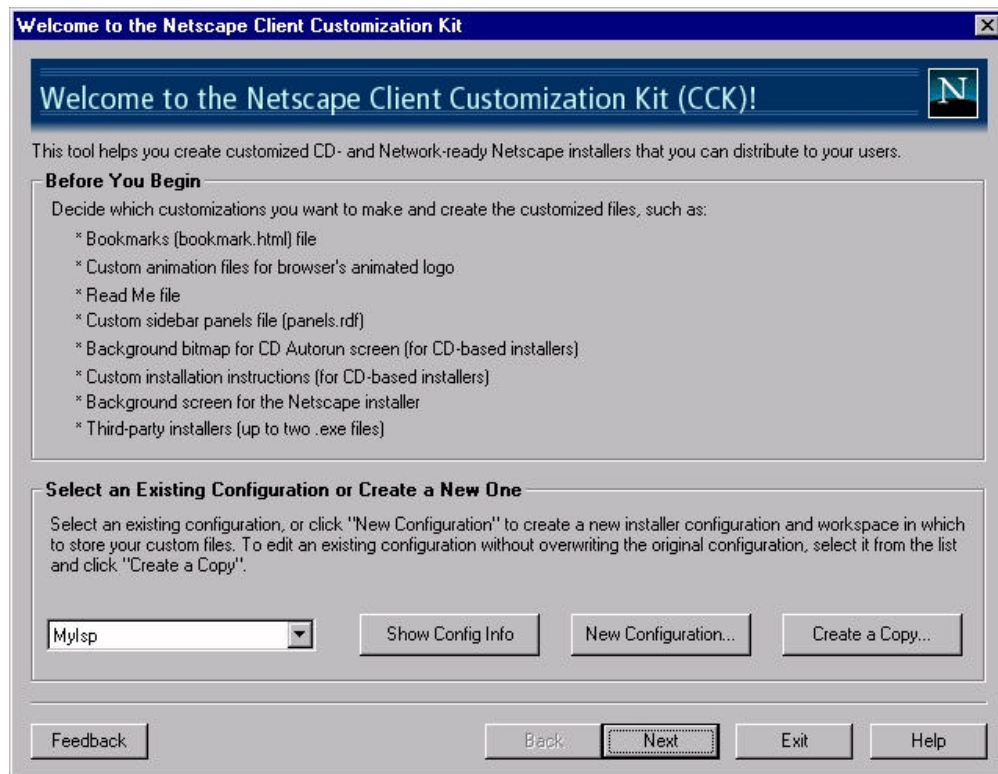
Total File Sizes per Setup Type

Setup Type	Total Size
Custom (Navigator Only)	8 MB
Recommended (Navigator, Mail, Instant Messenger, Quality Feedback Agent, Spell Checker, AOL Art Extensions, Macromedia Flash Player, HP Printer Identifier Plugin, Classic Skin)	11 MB
Full (Navigator, Mail, Instant Messenger, Sun Java2, Quality Feedback Agent, Spell Checker, Net2Phone, RealPlayer8, WinAmp, AOL Art Extensions, Macromedia Flash Player, HP Printer Identifier Plugin, Classic Skin)	25 MB

Netscape Client Customization Kit

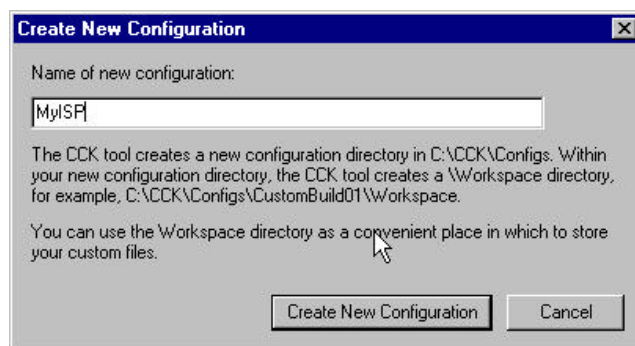
Create a custom branded Netscape browser for your customers in just 10 minutes

Overview



Designed for ISPs and others who want to distribute Internet software, the Netscape Client Customization Kit (CCK) lets you create a customized, branded version of the Netscape 6.1 client in less than 10 minutes. With the new wizard interface, you can easily configure popular customizations such as animated logos, default home page, bookmarks, and installer settings.

Create different customizations for different customers



You can create multiple configurations depending on your customer or business needs. Each configuration can have different settings for the various customizations in the CCK wizard.

As an ISP, you may want to distribute a different version of a customized Netscape 6.1 client to each of the small businesses or local communities you service. The Netscape Client Customization Kit allows you to create and save multiple client configurations. For example, your ISP service might have different technical support numbers and a different homepage depending on the local community being served.

It only takes 10 minutes to perform popular customizations

The Netscape Client Customization Kit contains a series of wizard screens that quickly guide you through the process of customizing the following options in less than 10 minutes:

- Creating a CD or downloadable version of the Netscape 6.1 client
- Customizing Netscape Navigator's default My Sidebar tabs, bookmarks, animated logo, title bar, and start menu
- Customizing the installer splash screen and installer text
- Customizing the screen that is automatically displayed when an end user inserts the customized Netscape 6.1 CD in the CD-ROM drive
- Selecting custom components, such as third party applications, to be included with the Netscape 6.1 client.

Themes allow new opportunities for customization

The new Themes feature allows developers to create an even more customized look for the browser. Based on web standards, this feature allows the browser to reflect company colors or to include custom toolbar buttons in the interface. For more information, visit <http://www.netscape.com/themes>.

Chapter 12 The New Netscape DevEdge

The easiest way to build web sites that work correctly on all major browsers



At Netscape, we realize that it can be expensive to maintain different web pages for different browsers, which is why we're offering Netscape DevEdge. The new DevEdge offers developers tools, documentation and a community for building web content and applications that works correctly in both Netscape and Microsoft browsers.

Visit Netscape DevEdge at <http://developer.netscape.com>.

The New DevEdge offers the best information, tools, and support for creating web pages on multiple browsers and multiple platforms

Build your web pages just once, knowing that these pages will be delivered correctly to Netscape browsers running on Windows, Mac or Linux, since Netscape offers a consistent web platform across operating systems.

Use the documentation and tools that are available at the new DevEdge site to get the best information on how to develop sites that work correctly on all major browsers. Some of the tools available from DevEdge include:

- DevEdge Web Tune-Up tool. Use this simple tool to test and update your web site to make sure it works for Netscape 6.1 and other leading browsers.
- DOM HTML Element cross-reference. This document provides a handy reference for the properties and methods defined for HTML 4.0, showing which attributes are supported by Netscape 6.1, Microsoft Internet Explorer, or both.
- CSS 2 Property cross-reference. CSS2 properties are presented in an easy to read table that helps developers determine the level of CSS support in the latest versions of Netscape 6.1 and Internet Explorer.
- Window Object cross-reference and Document Object cross-reference. Support for the attributes of Window objects and Document objects are presented in the same cross-browser look, allowing developers to quickly determine the best practice for creating sites that are compatible with both Netscape 6.1 and Microsoft Internet Explorer 5.5.
- Additional resources for developing with open web standards. Netscape 6.1 offers industry leading support of web standards, and DevEdge can help you take advantage of them. More information is being added all the time about using web standards including HTML 4.0, CSS 1, CSS 2, DOM 1 & DOM 2 (Core and HTML), RDF, XML 1.0, XML Namespaces 1.0, XML data exchange, transformation of XML documents with XSLT, XPath 1.0, XHTML 1.0, JavaScript 1.5 and more.

Developers can also join DevEdge to get updated news and information and to contact others who can help prepare web sites for Netscape 6.1. There is also a biweekly newsletter you can subscribe to that provide the very latest information and descriptions of new tools and items of interest to web developers.

Use the new DevEdge to learn how to develop dynamic pages, services and applications

With industry-leading support of W3C web standards like XML, CSS, DOM, JavaScript, and HTML 4, developers now have the tools to create more dynamic and robust web pages, services and applications. And DevEdge offers what you need to know to develop just once for multiple browsers (Netscape 6.1, Microsoft Internet Explorer) that run on various OS platforms (Windows, MacOS and Linux).

Learn how to get more traffic and increase the stickiness of your web site with a My Sidebar tab

If you can create a web page, you can create a My Sidebar tab. What you decide to create is limited only by your imagination. At the very least, a tab can have links that pull up your site in the main browser window. Because My Sidebar is compliant with the latest web standards, the tab itself can be a web application. A web-based calendar program might let users enter appointments or change from a daily view to a weekly view. Or users could play a game in their My Sidebar tab.

Because My Sidebar is always connected, information that is of continuous interest to the user is well suited to a tab. The more dynamic a tab's content, the more customers will want to view it throughout the day. Constantly updated news headlines, auction results, sports scores, and traffic reports are good examples of dynamic content. Also, a tab can rotate through static content in a database, so that it could feature a "recipe of the hour," for example.

If customers are given interesting, dynamic content that is relevant to them, they will keep coming back. And Netscape helps promote your new tabs in the My Sidebar Directory, located at <http://home.netscape.com/sidebar>.

Standards Support and New Technologies in Netscape Gecko and Netscape 6.1

The leader in Internet technology has built the foundation for the next Internet revolution

Overview

For years, developers of web content and web application have been demanding robust standards support from browser vendors. Today, developers of desktop applications and non-PC devices need the ability to build products supporting these standards. Netscape Gecko meets both needs. It provides the industry's best support for web standards such as HTML, XML, Cascading Style Sheets (CSS), and the Document Object Model (DOM). To ease the creation of desktop applications and devices that embed Netscape Gecko, it also features a cross-platform, cross-device architecture and powerful new technologies such as the XML-based User interface Language (XUL).

Netscape 6.1 uses Netscape Gecko to deliver the world's first fully standards-compliant browser across platforms, and the ease of embedding Netscape Gecko will bring the same power to desktop applications and devices as well.

What standards do Netscape Gecko and Netscape 6.1 support?

Netscape 6.1 supports more web standards, more deeply, more consistently across more platforms than any other browser. Aside from minor exceptions noted in the Gecko FAQ at <http://www.mozilla.org/newlayout/faq.html>, Netscape 6.1 features full support for HTML 4.0, XML 1.0, Resource Description Framework (RDF), Cascading Style Sheets level 1 (CSS1), and the W3C Document Object Model level 1 (DOM1). Netscape 6.1 also has the industry's best support for XML Namespaces, Cascading Style Sheets Level 2 (CSS2), and the Document Object Model Level 2 (DOM2). Standards support also includes XML data exchange, transformation of XML documents with XSLT, XPath 1.0, and XHTML 1.0. Finally, it features a solid foundation of support for data transport protocols (HTTP, FTP, and SSL), multilingual character data (Unicode), graphics (GIF, JPEG and PNG) and the latest version of the world's most popular scripting language, JavaScript 1.5.

Software and device vendors, content and web application developers, and consumers will all benefit from the arrival of this full-power platform for web standards.

Standards provide the power to build the 21st century web

- HTML 4.0 supports the creation of web forms that are easier to understand and tables that are easier to read.
- XML 1.0 enables the representation and exchange of structured documents and is the key to e-commerce over the Internet in the 21st century.
- Resource Description Framework (RDF) makes it possible to show the relationships between data and resources so you can index web sites and find better information with search engines.
- Cascading Style Sheets (CSS) make it possible to richly format web pages while simultaneously separating format and content for easy authoring and maintenance.
- The Document Object Model (DOM) makes objects on the page accessible to the JavaScript scripting language and allows scripts to edit or reformat the page and to respond to user events.

Together, these standards enable the creation of richer web content and higher-performance, more interactive, and more powerful web applications that are usable on any platform or device.

Content and web application developers will benefit from using the full power of web standards

Netscape 6 was the first browser to deliver the standards support that web developers had been demanding for years. The World Wide Web Consortium (W3C) standards at the core of the Netscape Gecko Technologies provide a robust foundation for cross-platform, cross-browser, cross-device web content and applications. Because standards are stable over time and under the control of neutral standards bodies, developers also gain investment protection for their work and products in the future.

- Developers can write content and web applications once, and they will run on any standards-compliant client applications or devices. In particular, they will run on all browsers and devices that embed Netscape Gecko, reaching a broad audience across browsers, platforms, and devices.
- Because Netscape Gecko has the industry's leading implementation of W3C standards, time and money won't be wasted on developing workarounds for holes in standards compliance.
- The power of a web content and application platform now rivals that of proprietary platform APIs (such as the UI and event handling supported by Windows), so that web applications can offer the richness and power once only possible for platform-specific client applications. In the long term, portals and startups will compete to create full-power web applications to replace traditional client-side desktop applications and will aggregate multiple web applications to create user environments matching the desktop in power and exceeding it in access to real time Internet data and in ease of use.

- Netscape Gecko's rich support for Cascading Style Sheets enables content developers to achieve formatting controls that approach those of traditional desktop publishing applications.
- By using Cascading Style Sheets formatting rules and positioning instead of elements and TABLEs, content developers can also slash the size of web pages by up to 95%, dramatically reducing page download times on their site.
- The clean separation of content and presentation enabled by Cascading Style Sheets makes it easier and cheaper to maintain and update a site's look and feel over time.
- By building DOM-based applications that do more processing on the user's computer, developers can reduce the number of server round-trips necessary per session. This provides better performance to the user while simultaneously reducing load on site servers and cost for the content provider.
- Within the My Sidebar tabs of Netscape 6.1, portals and content sites can immediately use the full power of Gecko to offer compelling My Sidebar tabs with timely information, links, services, and notifications. This will integrate the site more deeply and permanently into the user's browser and daily work, increasing user loyalty and return visits.

New technologies in Netscape 6.1

In addition to the industry's best standards support, Netscape 6.1 and the Netscape Gecko layout engine feature an architecture that is open, portable, extensible, and customizable. This new architecture makes it easy to support a wide variety of platforms and devices, add any functionality you wish, and integrate it all with the popular scripting language, JavaScript.

- Gecko's foundation is a set of **XPCOM** modules. XPCOM is a cross-platform implementation of the well-known Common Object Model (COM). Developers can easily extend the browser's core capabilities by adding their own XPCOM components.
- To make these binary components scriptable from JavaScript, Netscape Gecko supports **XPCConnect**. With XPCConnect, anyone who can write JavaScript can take full advantage and have full control of all the power that XPCOM binary components offer.
- To provide up-to-the-minute support for the latest Java Virtual Machines (JVMs), Gecko supports the **Open JVM Interface** (OJI). This clean plug-in based architecture decouples Gecko development from JVM development, allows Gecko users to upgrade to a new version of a JVM as soon as it is released, and gives them the freedom to choose any OJI-compliant JVM on their platform or device. It enables web content and applications to make full use of the vast and growing library of existing Java applets.
- **LiveConnect** makes it possible for JavaScript to control Java applets and smoothly integrate them into web content and applications.

- Netscape 6.1's entire user interface is implemented in **XUL**, the XML-Based User interface Language. XUL makes it easy to build a cross-platform software application user interface by leveraging all the power inherent in the web standards (HTML, XML, CSS, and DOM) and adding in common user interface metaphors such as boxes, springs, and other layout constructs.
- The **XP Widgets** are a pre-built library of user interface objects for use in XUL. These widgets include common user interface objects such as menu bars, toolbars, tree widgets, tab widgets, progress bars, and so on. They make it even easier to build a powerful cross-platform user interface.
- The **Mozilla Plug-in API** provides access to all the power of existing plug-ins already on the market today.

Software and device vendors gain a fast, powerful, standards-compliant layout engine with full access to the richness of the Web

More and more software applications need the ability to display web content for help, for the preview of output that has been formatted for the Web, or for other purposes. Also, the next few years will bring a proliferation of devices for browsing the Web. Vendors of both software and devices can build their products more quickly and easily by embedding Netscape Gecko and offer their customers full power web browsing at the same time.

Easy to embed

- Netscape Gecko's web shell embedding API and ActiveX controls make it easy to integrate into any application.
- Netscape Gecko is free, so application and device vendors can add support to their product for all these web standards with zero licensing or distribution overhead cost.
- Because of Netscape Gecko's cross-platform, cross-device architecture, vendors can easily use Netscape Gecko on a wide range of platforms or devices.

Rich functionality

- Netscape Gecko provides the industry's best compliance with web standards, so vendors can provide customers with full access to all the Internet's content and applications, offering a user experience that matches the leading browser vendors.
- As web applications proliferate, they will continuously increase the application power available to any application or device that embeds Netscape Gecko. This will provide a compelling upgrade incentive, increasing the uptake speed for applications and devices that embed Netscape Gecko.

Client application developers get a lightweight new development environment

XUL (pronounced 'zool') gives developers the power to create a cross-platform user interface with all the sophistication of a Windows, MacOS, or GTK UI. Because the entire user interface of Netscape 6.1 is specified from the ground up in XUL, the browser has become a software application development platform. If they wish, developers can write a locally installable XUL application that displays the user interface of an application (such as a spreadsheet) within the browser window. The user won't even be aware that the application has been built on a browser. They'll only be impressed by the speed and cross-platform support of the application.

Consumers will gain access to free, new, easy to use web applications they can access anytime, anywhere

- ◆ Netscape Gecko's robust content and application platform will give end users access to any kind of data (such as mutual fund information delivered as XML), visually rich web content, and better web application user interfaces that will make web applications (such as web mail) easier to use.
- ◆ These location and platform independent web applications will be accessible anytime, anywhere.
- ◆ An ever-increasing number of free web applications will offer increasingly rich application functionality via the browser at no cost. Just as consumers take the availability of free web mail for granted today, in the future they will take for granted the free availability of web application spreadsheets, retirement income calculators, tax preparation applications, and so on.
- ◆ Gecko-embedded devices will bring web browsing, web applications, and email to consumers who have been intimidated up to now by the complexity of PCs.

Developers can personalize the user interface

Thanks to XUL, developers with a text editor can modify the user interface to suit their own tastes or needs. Developers are already experimenting with providing pre-built, downloadable themes with distinctive user interface styles. For more information, please visit <http://www.netscape.com/themes>.