



StorageTek™ T9840 Tape Drive

User's Reference Manual

Part Number: 95739

Revision: Y



StorageTek™ T9840 Tape Drive

User's Reference Manual

Sun Microsystems, Inc.
www.sun.com

Part No. 95739
January 2008, Revision Y

Submit comments about this document at: SLSFS@Sun.com

Copyright 2008 Sun Microsystems, Inc., 4150 Network Circle, Santa Clara, California 95054, U.S.A. All rights reserved.

Sun Microsystems, Inc. has intellectual property rights relating to technology that is described in this document. In particular, and without limitation, these intellectual property rights might include one or more of the U.S. patents listed at <http://www.sun.com/patents> and one or more additional patents or pending patent applications in the U.S. and in other countries.

This document and the product to which it pertains are distributed under licenses restricting their use, copying, distribution, and decompilation. No part of the product or of this document might be reproduced in any form by any means without prior written authorization of Sun and its licensors, if any.

Third-party software, including font technology, is copyrighted and licensed from Sun suppliers.

Parts of the product might be derived from Berkeley BSD systems, licensed from the University of California. UNIX is a registered trademark in the U.S. and in other countries, exclusively licensed through X/Open Company, Ltd.

Sun, Sun Microsystems, the Sun logo, Java, StorageTek, StorageTek logo, L-Series, SL8500, PowderHorn, VolSafe, and Solaris are trademarks or registered trademarks of Sun Microsystems, Inc. in the U.S. and in other countries.

U.S. Government Rights—Commercial use. Government users are subject to the Sun Microsystems, Inc. standard license agreement and applicable provisions of the FAR and its supplements.

DOCUMENTATION IS PROVIDED "AS IS" AND ALL EXPRESS OR IMPLIED CONDITIONS, REPRESENTATIONS AND WARRANTIES, INCLUDING ANY IMPLIED WARRANTY OF MERCHANTABILITY, FITNESS FOR A PARTICULAR PURPOSE OR NON-INFRINGEMENT, ARE DISCLAIMED, EXCEPT TO THE EXTENT THAT SUCH DISCLAIMERS ARE HELD TO BE LEGALLY INVALID.

Copyright 2008 Sun Microsystems, Inc., 4150 Network Circle, Santa Clara, California 95054, Etats-Unis. Tous droits réservés.

Sun Microsystems, Inc. a les droits de propriété intellectuels relatants à la technologie qui est décrit dans ce document. En particulier, et sans la limitation, ces droits de propriété intellectuels peuvent inclure un ou plus des brevets américains énumérés à <http://www.sun.com/patents> et un ou les brevets plus supplémentaires ou les applications de brevet en attente dans les Etats-Unis et dans les autres pays.

Ce produit ou document est protégé par un copyright et distribué avec des licences qui en restreignent l'utilisation, la copie, la distribution, et la décompilation. Aucune partie de ce produit ou document ne peut être reproduite sous aucune forme, par quelque moyen que ce soit, sans l'autorisation préalable et écrite de Sun et de ses bailleurs de licence, s'il y en a.

Le logiciel détenu par des tiers, et qui comprend la technologie relative aux polices de caractères, est protégé par un copyright et licencié par des fournisseurs de Sun.

Des parties de ce produit pourront être dérivées des systèmes Berkeley BSD licenciés par l'Université de Californie. UNIX est une marque déposée aux Etats-Unis et dans d'autres pays et licenciée exclusivement par X/Open Company, Ltd.

Sun, Sun Microsystems, le logo Sun, Java, StorageTek, StorageTek logo, L-Series, SL8500, PowderHorn, VolSafe, et Solaris sont des marques de fabrique ou des marques déposées de Sun Microsystems, Inc. aux Etats-Unis et dans d'autres pays.

LA DOCUMENTATION EST FOURNIE "EN L'ÉTAT" ET TOUTES AUTRES CONDITIONS, DECLARATIONS ET GARANTIES EXPRESSES OU TACITES SONT FORMELLEMENT EXCLUES, DANS LA MESURE AUTORISEE PAR LA LOI APPLICABLE, Y COMPRIS NOTAMMENT TOUTE GARANTIE IMPLICITE RELATIVE A LA QUALITE MARCHANDE, A L'APTITUDE A UNE UTILISATION PARTICULIERE OU A L'ABSENCE DE CONTREFAÇON.

We welcome your feedback. Please contact the Sun Learning Solutions Feedback System at:

SLSFS@Sun.com

or

Sun Learning Services
Sun Microsystems, Inc.
500 Eldorado Blvd, 06-307
Broomfield, CO 80021
USA

Please include the publication name, part number, and edition number in your correspondence if they are available. This expedites our response.



Please
Recycle



Revision History

EC	Date	Revision	Description
112188	October 1998	A	Initial release
113499	February 1999	B	See this edition for a description of changes.
112275	April 1999	C	See this edition for a description of changes.
112388	September 1999	D	See this edition for a description of changes.
112350	November 1999	E	See this edition for a description of changes.
111457	March 2000	F	See this edition for a description of changes.
111488	May 2000	G	See this edition for a description of changes.
111523	August 2000	H	See this edition for a description of changes.
111542	August 2000	J	See this edition for a description of changes.
111643	May 2001	K	See this edition for a description of changes.
111692	November 2001	L	See this edition for a description of changes.
111768	November 2002	M	See this edition for a description of changes.
111823	March 2003	N	See this edition for a description of changes.
111841	May 2003	P	See this edition for a description of changes.
111850	July 2003	R	See this edition for a description of changes.
111864	September 2003	T	See this edition for a description of changes.
111872	September 2003	U	See this edition for a description of changes.
111895	May 2004	V	See this edition for a description of changes.
111407	May 2005	W	See this edition for a description of changes.
EC000238	January 2008	Y	Added content regarding the T9840D tape drive. Updated the document template. Removed the CSL operating instructions.

Contents

Revision History 3

Contents 5

Figures 9

Tables 11

Preface 13

Organization 13

Alert Messages 14

Mensajes de alerta 14

Typographical Conventions 15

Related Publications 15

Additional Information 16

 Sun's External Web Site 16

 Customer Resource Center 16

Customer-Initiated Maintenance 17

Notices 19

United States FCC Compliance Statement 19

Japanese Compliance Statement 20

Taiwan Warning Label Statement 20

Internal Code License Statement 21

1. Overview 23

Tape Drive 23

Encryption	24
Encryption Resources	24
Encryption Status LED	25
Configurations	26
Manual Load Drive Units	26
Library Attached Configurations	28
Cartridge Scratch Loader Drive Units	29
Interfaces	29
Cartridges	30
Mixed Media Management	31
Media Information Region	32
Normal MIR Processing	33
Cross-Density MIR Processing	33
T9840D Tape Drive Loaded With a Lower-Density Cartridge	33
T9840C tape Drive Loaded With a T9840D Data Cartridge	34
T9840C Tape Drive Loaded With a T9840A/B Data Cartridge	34
T9840A/B Tape Drives	35
Exceptional MIR Processing	36
Invalid MIR Correction	36
2. Operator Panel	39
Front Panel	39
Load/Unload Slot	40
Indicators	40
Switches	41
Manual Unload Device	41
Display	42
Tape Bar	42
Write Bar	42
Read Bar	43
SL8500 Library Controls/Indicators	44
SL8500/T9x40 Drive Tray	44
StorageTek Library Console	45
Drive Folder Top Level Display	45

Drive Specific Displays 46
Status 46
Properties 47

3. Menus 49

Menu Structure Overview 49
Menu Operations 50
Online Menu Operation 50
Offline Menus 61

4. Operator Tasks 63

Power-on the Drive 64
Power-off the Drive 64
Reset the Drive 65
Place the Drive Offline 65
Place the Drive Online 66
View Drive Configuration 67
View Firmware Release Level 68
Exit the Menu System 68
Write-protect/Enable a Data Cartridge 69
Load a Data Cartridge 70
Unload a Data Cartridge 71
Reformat a Cartridge 71
Build MIR 72
Clean the Drive 73
Cartridge Care 74
 Handling 74
 Storing 74
 Identify a Damaged Cartridge 74
 Cleaning 75
 Shipping 75

5. Indicators and Messages 77

Indicators 77
Messages 78
 Potential Operator Recovery Scenarios 82

Translated Messages 83

A. Specifications 85

Physical Specifications 85

Tape Drive Only 85

Desktop Configuration 86

Rack-Mount Configuration 86

Library-attached Configuration 86

Power Specifications 87

Environmental Requirements 88

Tape Drive and Power Supply 88

Tape Cartridge 89

Performance Specifications 90

Tape Drive 90

Tape Cartridge 91

Glossary 93

Index 101

Figures

FIGURE 1-1	T9840 Tape Drive Front Panel	23
FIGURE 1-2	Encryption Status LED (SL8500 Library Drive Tray)	25
FIGURE 1-3	T9840 Desktop and Rack-mount Units	27
FIGURE 1-4	RACK001 with Six T9840 Rack-mount Drive Trays	27
FIGURE 1-5	T9840 Tape Drive Library Attached Configurations	28
FIGURE 1-6	CSL Desktop and Rack-mount (T9840A)	29
FIGURE 1-7	9840 Tape Cartridge	30
FIGURE 2-1	T9840 Operator Panel	39
FIGURE 2-2	Tape Bar	43
FIGURE 2-3	SL8500/T9840 Drive Tray Rear Panel	44
FIGURE 2-4	SL8500 SLC Drive Folder Display	45
FIGURE 2-5	SL8500 SLC Drive Status Display	46
FIGURE 2-6	SL8500 SLC Drive Properties Display	47
FIGURE 3-1	Menu Tree Legend	50
FIGURE 3-2	Online Menus	51
FIGURE 3-3	View Fibre Channel Menu Tree(Part 1 of 3)	52
FIGURE 3-4	View Fibre Channel Menu Tree(Part 2 of 3)	53
FIGURE 3-5	View Fibre Channel Menu Tree(Part 3 of 3)	54
FIGURE 3-6	View SCSI Configuration Tree (Part 1 of 2)	55
FIGURE 3-7	View SCSI Configuration Tree (Part 2 of 2)	56
FIGURE 3-8	View ESCON Configuration Menu Tree	57
FIGURE 3-9	View FICON Configuration Menu Tree (Part 1 of 3)	58
FIGURE 3-10	View FICON Configuration Menu Tree (Part 2 of 3)	59
FIGURE 3-11	View FICON Configuration Menu Tree (Part 3 of 3)	60
FIGURE 3-12	Offline Menus	61

FIGURE 3-13	Drive Operations Menu Tree	62
FIGURE 4-1	T9840 Data Cartridge Write Protect Switch	69

Tables

TABLE 1-1	Encryption Status LED State Descriptions	26
TABLE 1-2	Cartridge Read/Write Compatibility	31
TABLE 2-1	Operator Panel Indicators	40
TABLE 2-2	Operator Panel Switches	41
TABLE 5-1	Operator Panel Indicators	77
TABLE 5-2	Operator Panel Display Messages	78
TABLE 5-3	Selected Check Message Meanings	82
TABLE 5-4	Translated Display Messages	83
TABLE A-1	T9840 Tape Drive Physical Specifications	85
TABLE A-2	T9840 Tape Drive Rack-mount Physical Specifications	86
TABLE A-3	T9840 Tape Drive Weights (Library-attached)	87
TABLE A-4	T9840 Tape Drive Power Specifications	87
TABLE A-5	T9840 Tape Drive and Power Supply Environmental Requirements	88
TABLE A-6	T9840 Tape Cartridge Environmental Requirements	89
TABLE A-7	T9840 Tape Drive Performance Specifications	90
TABLE A-8	T9840 Data Cartridge Physical and Performance Specifications	91

Preface

This manual contains information about the StorageTek T9840A, T9840B, T9840C, and T9840D tape drives. It is a guide for operating the drive and responding to operator panel messages that occur operating the drive. The specific model suffix will be used only as required for differentiation.

Organization

The organization of this guide is:

Chapter 1	“Overview” provides an overview of the T9840 tape drive and its data cartridges.
Chapter 2	“Operator Panel” describes the T9840 operator panel and its features.
Chapter 3	“Menus” describes use and navigation of the T9840 tape drive’s menu system.
Chapter 4	“Operator Tasks” describes in detail the tasks the operator can perform.
Chapter 5	“Indicators and Messages” describes the meaning and recommended action for the operator-panel indicators and messages.
Appendix A	“Specifications” lists the physical and environmental specifications for the tape drive.
Glossary	“Glossary” defines some terms and abbreviations used in this guide.
Index	The “Index” allows you to locate information in this manual.

Alert Messages

Alert messages call your attention to information that is especially important or that has a unique relationship to the main text or graphic.

Note – A note provides additional information that is of special interest. A note might point out exceptions to rules or procedures. A note usually, but not always, follows the information to which it pertains.



Caution – A caution informs you of conditions that might result in damage to hardware, corruption of data, or corruption of application software. A caution always precedes the information to which it pertains.



Warning – Possible Physical Injury. A warning alerts you to conditions that might result in long-term health problems, injury, or death. A warning always precedes the information to which it pertains.

Mensajes de alerta

Los mensajes de alerta llaman la atención hacia información de especial importancia o que tiene una relación específica con el texto principal o los gráficos.

Note – Una nota expone información adicional que es de interés especial. Una nota puede señalar excepciones a las normas o procedimientos. Por lo general, aunque no siempre, las notas van después de la información a la que hacen referencia.



Precaución: Una precaución informa sobre situaciones que podrían conllevar daños del hardware, de los datos o del software de aplicación. Las precauciones van siempre antes de la información a la que hacen referencia.



Warning – Possible Physical Injury. Una advertencia llama la atención sobre condiciones que podrían conllevar problemas de salud crónicos, lesiones o muerte. Las advertencias van siempre antes de la información a la que hacen referencia.

Typographical Conventions

Typographical conventions highlight special words, phrases, and actions in this publication.

Item	Example	Description of Convention
Commands	Mode Select	Initial cap
Document titles	<i>System Assurance Guide</i>	Italic font
Emphasis	<i>not or must</i>	Italic font
Menu options	Exit	Bold
Hypertext links	Figure 1 on page 25	Blue (prints black in hardcopy publications)
URLs	http://www.sun.com	Blue (prints black in hardcopy publications)

Related Publications

Publications relating to the tape drive:

Document Title	Part Number
<i>4410/11/20/30 and 9310/11/20 Automated Cartridge System Hardware Operator's Guide</i>	9206
<i>Nearline Enterprise 9310/4410/9360 LSM System Assurance Guide</i>	ML6500
<i>L700x/L1400x Tape Libraries and Pass-Thru Port Ordering and Configuration Guide</i>	MT9112
<i>L700x/L1400x Tape Libraries and Pass-Thru Port Operator Guide</i>	95845
<i>L5500 Automated Cartridge System System Assurance Guide</i>	MT9142
<i>L5500 Automated Cartridge System Operator's Guide</i>	96063
<i>StorageTek SL8500 Modular Library System, User's Guide</i>	96154
<i>TimberWolf 9740 Library Storage Module System Assurance Guide</i>	MT5001
<i>TimberWolf 9740 Library Storage Module Hardware Operator's Guide</i>	95693
<i>T9x40 Tape Drive Service Reference Manual</i>	95740
<i>Crypto Key Management Station Configuration and Startup Guide</i>	96261
<i>Crypto Key Management Station User's Guide</i>	96262
<i>Crypto Key Management Station Systems Assurance Guide</i>	TM0018

Publications regarding Sun Microsystems software products:

Sun Microsystems Software Products

A list of Sun Microsystems software products can be found online at:
<http://www.support.storagetek.com>

Additional Information

This section offers several methods to obtain additional information.

Sun's External Web Site

Sun's external Web site provides marketing, product, event, corporate, and service information. The external Web site is accessible to anyone with a Web browser and an Internet connection.

The URL for the external Web site is: <http://www.sun.com>

The URL for StorageTek™ brand-specific information is:
<http://www.sun.com/storagetek/>

Customer Resource Center

The Sun StorageTek product Customer Resource Center (CRC) is a Web site that enables members to resolve technical issues by searching code fixes and technical documentation for StorageTek brand products. CRC membership entitles you to other proactive services, such as HIPER subscriptions, technical tips, answers to frequently asked questions, addenda to product documentation books, and online product support contact information. Customers who have a current warranty or a current maintenance service agreement may apply for membership by clicking on the Request Password button on the CRC home page. Sun employees may enter the CRC through the SunWeb PowerPort.

The URL for the CRC is <http://www.support.storagetek.com>

Customer-Initiated Maintenance

Customer-initiated maintenance begins with a telephone call from you to Sun Microsystems StorageTek Support. You receive immediate attention from qualified personnel, who record problem information and respond with the appropriate level of support.

To contact Sun Microsystems StorageTek Support about a problem, telephone:

800.525.0369 (inside the United States)

303.673.4056 (outside the United States)

This section describes what to do if problems occur with the tape drive. In some cases, you might be able to correct the problem. In other cases, you must contact your service representative as described in this chapter.

If you have as much of the following information as possible when you place a service call, the process is much easier:

- Account name: _____
- Site location number: _____
- Contact name: _____
- Telephone number: _____
- Equipment model number: _____
- Tape drive address: _____
- Tape drive code level: _____
- Tape drive serial number: _____
- Urgency of the problem: _____
- Fault Symptom Code (FSC) from the tape drive's front panel display screen (rack mount) or as displayed on the host system display screen: _____
- Problem description: _____
- Is the tape drive in a library? ___ If so, which library? _____
- If the tape drive was running properly before this incident:
 - What changes has the site made recently? _____
 - What software application was running at the time of the failure? _____
 - Were any hardware configuration changes made recently? _____
 - Were any software configuration or upgrades done recently? _____
 - Were any additions or deletions to the hardware or software done at the site? _____
- If the drive was NOT running properly before this incident, what was the last problem? _____

Notices

Please read the following compliance and warning statements for this product.



Caution – Potential equipment damage: Cables that connect peripherals must be shielded and grounded; refer to descriptions in the cable instruction manuals. Operation of this equipment with cables that are not shielded and not correctly grounded might result in interference to radio and TV reception.

Changes or modifications to this equipment that are not expressly approved in advance by StorageTek voids the warranty. In addition, changes or modifications to this equipment might cause it to create harmful interference.

United States FCC Compliance Statement

The following compliance statement pertains to Federal Communications Commission Rules 47 CFR 15.105:

Note – This equipment has been tested and found to comply with the limits for a Class A digital device pursuant to part 15 of the FCC Rules. These limits are designed to provide reasonable protection against harmful interference when the equipment is operated in a commercial environment. This equipment generates, uses, and can radiate radio frequency energy and, if not installed and used in accordance with the instruction manual, may cause harmful interference to radio communications. Operation of this equipment in a residential area is likely to cause harmful interference in which case the user is required to correct the interference at his or her own expense.

Japanese Compliance Statement

The following compliance statement in Japanese pertains to VCCI EMI regulations:

この装置は、情報処理装置等電波障害自主規制協議会（VCCI）の基準に基づくクラスA情報技術装置です。この装置を家庭環境で使用すると電波妨害を引き起こすことがあります。この場合には使用者が適切な対策を講ずるよう要求されることがあります。

English translation: This is a Class A product based on the Technical Requirement of the Voluntary Control Council for Interference by Information Technology (VCCI). In a domestic environment, this product may cause radio interference, in which case the user may be required to take corrective actions.

Taiwan Warning Label Statement

The following warning label statement pertains to BSMI regulations in Taiwan, R.O.C.:

警告使用者：這是甲類的資訊產品，在居住的環境中使用時，可能會造成射頻干擾，在這種情況下，使用者會被要求採取某些適當的對策

English translation: This is a Class A product. In a domestic environment, this product may cause radio interference, in which case, the user may be required to take adequate measures.

Internal Code License Statement

The following is the Internal Code License Agreement from StorageTek:

NOTICE

INTERNAL CODE LICENSE

PLEASE READ THIS NOTICE CAREFULLY BEFORE INSTALLING AND OPERATING THIS EQUIPMENT. THIS NOTICE IS A LEGAL AGREEMENT BETWEEN YOU (EITHER AN INDIVIDUAL OR ENTITY), THE END USER, AND STORAGE TECHNOLOGY CORPORATION ("STORAGETEK"), THE MANUFACTURER OF THE EQUIPMENT. BY OPENING THE PACKAGE AND ACCEPTING AND USING ANY UNIT OF EQUIPMENT DESCRIBED IN THIS DOCUMENT, YOU AGREE TO BECOME BOUND BY THE TERMS OF THIS AGREEMENT. IF YOU DO NOT AGREE WITH THE TERMS OF THIS AGREEMENT, DO NOT OPEN THE PACKAGE AND USE THE EQUIPMENT. IF YOU DO NOT HAVE THE AUTHORITY TO BIND YOUR COMPANY, DO NOT OPEN THE PACKAGE AND USE THE EQUIPMENT. IF YOU HAVE ANY QUESTIONS, CONTACT THE AUTHORIZED STORAGETEK DISTRIBUTOR OR RESELLER FROM WHOM YOU ACQUIRED THIS EQUIPMENT. IF THE EQUIPMENT WAS OBTAINED BY YOU DIRECTLY FROM STORAGETEK, CONTACT YOUR STORAGETEK REPRESENTATIVE.

1. **Definitions:** The following terms are defined as follows:
 - a. "Derivative works" are defined as works based upon one or more preexisting works, such as a translation or a musical arrangement, or any other form in which a work might be recast, transformed, or adapted. A work consisting of editorial revision, annotations, elaboration, or other modifications which, as a whole, represent an original work of authorship, is a Derivative work.
 - b. "Internal Code" is Microcode that (i) is an integral part of Equipment, (ii) is required by such Equipment to perform its data storage and retrieval functions, and (iii) executes below the user interface of such Equipment. Internal code does not include other Microcode or software, including data files, which might reside or execute in or be used by or in connection with such Equipment, including, without limitation, Maintenance Code.
 - c. "Maintenance Code" is defined as Microcode and other software, including data files, which might reside or execute in or be used by or in connection with Equipment, and which detects, records, displays, and/or analyzes malfunctions in the Equipment.
 - d. "Microcode" is defined as a set of instructions (software) that is either imbedded into or is to be loaded into the Equipment and executes below the external user interface of such Equipment. Microcode includes both Internal Code and Maintenance Code, and might be in magnetic or other storage media, integrated circuitry, or other media.
2. The Equipment you have acquired by purchase or lease is manufactured by or for StorageTek and contains Microcode. By accepting and operating this Equipment, you acknowledge that StorageTek or its licensor(s) retain(s) ownership of all Microcode, as well as all copies thereof, that might execute in or be used in the operation or servicing of the Equipment and that such Microcode is copyrighted by StorageTek or its licensor(s).
3. StorageTek hereby grants you, the end user of the Equipment, a personal, nontransferable (except as permitted in the transfer terms below), nonexclusive license to use each copy of the Internal Code (or any replacement provided by StorageTek or your authorized StorageTek distributor or reseller) which license authorizes you, the end user, to execute the Internal Code solely to enable the specific unit of Equipment for which the copy of Internal Code is provided to perform its data storage and retrieval functions in accordance with StorageTek's (or its licensor's) official published specifications.
4. Your license is limited to the use of the Internal Code as set forth. You might not use the Internal Code for any other purpose. You might not, for example, do any of the following:
 - (i) access, copy, display, print, adapt, alter, modify, patch, prepare Derivative works of, transfer, or distribute (electronically or otherwise) or otherwise use the Internal Code;
 - (ii) reverse assemble, decode, translate, decompile, or otherwise reverse engineer the Internal Code (except as decompilation might be expressly permitted under applicable European law solely for the purpose of gaining information that allows interoperability when such information is not otherwise readily available); or

(iii) sublicense, assign, or lease the Internal Code or permit another person to use such Internal Code, or any copy of it.

5. Nothing in the license set forth above or in this entire Notice shall convey, in any manner, to you any license to or title to or other right to use any Maintenance code, or any copy of such Maintenance Code. Maintenance Code and StorageTek's service tools and manuals might be kept at your premises, or they might be supplied with a unit of Equipment sent to you and/or included on the same media as Internal Code, but they are to be used only by StorageTek's customer service personnel or those of an entity licensed by StorageTek, all rights in and to such Maintenance Code, service tools and manuals being reserved by StorageTek or its licensors. You agree that you shall not use or attempt to use the Maintenance Code or permit any other third party to use and access such Maintenance Code.
6. You, the end user, agree to take all appropriate steps to ensure that all of your obligations set forth in this Notice are extended to any third party having access to the Equipment.
7. You might transfer possession of the Internal Code to another party only with the transfer of the Equipment on which its use is authorized, and your license to use the Internal Code is discontinued when you are no longer an owner or a rightful possessor of the Equipment. You must give such transferee all copies of the Internal Code for the transferred Equipment that are in your possession, along with a copy of all provisions of this Notice.

Any such transfer by you is automatically (without further action on the part of either party) expressly subject to all the terms and conditions of this Notice passing in full to the party to whom such Equipment is transferred, and such transferee accepts the provisions of this license by initial use of the Internal Code. You cannot pass to the transferee of the Equipment any greater rights than granted under this Notice, and shall hold StorageTek harmless from any claim to the contrary by your transferee or its successors or assigns. In addition, the terms and conditions of this Notice apply to any copies of Internal Code now in your possession or use or which you hereafter acquire from either StorageTek or another party.

8. You acknowledge that copies of both Internal Code and Maintenance Code might be installed on the Equipment before shipment or included with the Equipment and other material shipped to you, all for the convenience of StorageTek's service personnel or service providers licensed by StorageTek, and that during the warranty period, if any, associated with the Equipment, and during periods in which the Equipment is covered under a maintenance contract with StorageTek or service providers licensed by StorageTek, both Internal Code and Maintenance Code might reside and be executed in or used in connection with such Equipment, and you agree that no rights to Maintenance Code are conferred upon you by such facts.

StorageTek or the licensed service provider might keep Maintenance Code and service tools and manuals on your premises but they are to be used only by StorageTek's customer service personnel or those of service providers licensed by StorageTek. You further agree that upon (i) any termination of such warranty period or maintenance contract period; or (ii) transfer of possession of the Equipment to another party, StorageTek and its authorized service providers shall have the right with respect to the affected Equipment to remove all service tools and manuals and to remove or disable all Maintenance Code and/or replace Microcode which includes both Internal Code and Maintenance Code with Microcode that consists only of Internal Code.

Overview

This chapter provides an overview of the T9840 Tape Drive family.

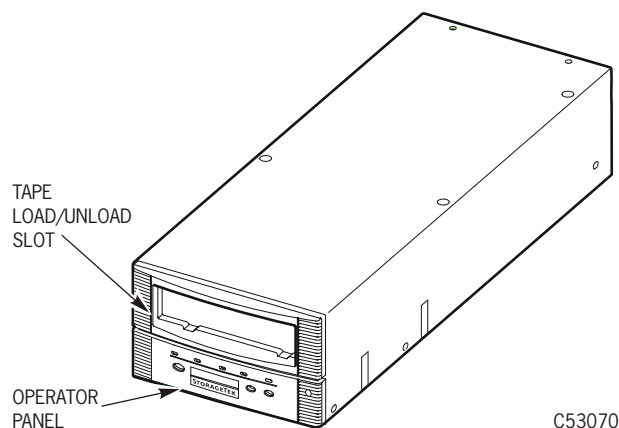
Tape Drive

The T9840 Tape Drive is designed for fast-access to data stored on a midpoint loading tape cartridge. Four drive models are available for the enterprise and client-server environments. The T9840A and T9840B have a 20 GB, uncompressed cartridge capacity. The T9840C has a cartridge capacity of 40 GB, uncompressed. The encryption-capable T9840D has a cartridge capacity of 75 GB, uncompressed. For more information about the tape cartridge, see [“Cartridges” on page 30](#).

The drive front panel ([FIGURE 1-1](#)) has a tape load/unload slot and an operator panel for manual control. See [Chapter 2, “Operator Panel”](#) for detailed information on operator panel controls and indicators.

The drive rear panel has connectors for power, host interface, library interface, and maintenance (not available on the T9840A). Use of the RJ45 maintenance port is restricted to Sun service personnel only, using proprietary software applications.

FIGURE 1-1 T9840 Tape Drive Front Panel



Note – Customer attachment to the maintenance port has caused drive problems. Sun neither supports nor assumes any responsibility for unauthorized use of the maintenance port by non-Sun personnel.

An encryption status LED is present on the rear panel of the T9840D.

Encryption

Encryption is based on the science of cryptography and is one of today's most effective ways to achieve data security. To read an encrypted file, you must have access to the key that enables the drive to decipher the data.

The T9840D tape drive employs a device-based (or data-at-rest) encryption solution. The drive is shipped from the factory encryption-capable, but not encryption-enabled. You must explicitly enable the drive for encryption.

Note – A tape drive that has not been enabled for encryption can neither read nor append to any encrypted data cartridge.

An encryption-enabled drive can:

- Write to the data cartridge in encrypted mode only (by using its assigned write key)
- Read an encrypted data cartridge, if it has the proper read key
- Read non-encrypted data cartridges
- Format tape cartridges
- Run all diagnostic tests (service representative function)

An encryption-enabled drive cannot:

- Append to a non-encrypted data cartridge
- Write to a non-encrypted data cartridge
- Mix encrypted and non-encrypted data on the same cartridge

Encryption Resources

For additional information on the encryption capabilities and features, refer to:

- *Crypto Key Management Station, User's Guide*, PN 96262
- *Crypto Key Management Station, Configuration and Startup Guide*, PN 96261
- *Crypto Key Management Station and Data-at-Rest Encryption, Technical Brief*, PN TT0018

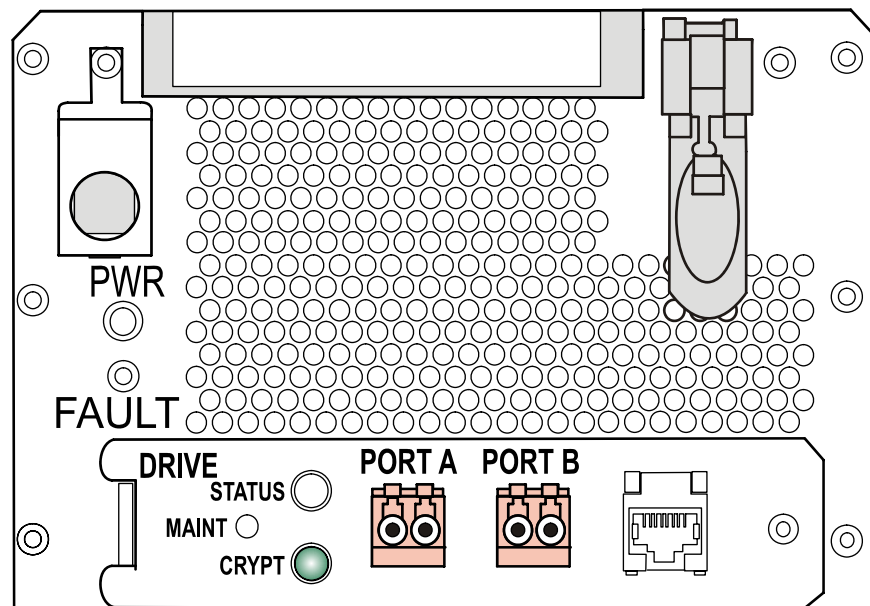
Encryption Status LED

Encryption-capable drives have a tri-color, encryption-status LED on the rear panel, see [TABLE 1-1 on page 26](#) for an explanation of the status indications. Drive trays that fully enclose the drive transfer the LED indication to the rear of the tray through a light pipe (see the **CRYPT** label in the figure below).

If the encryption status LED is green, it indicates that the drive is encryption capable, but not encryption enabled. In this state, the drive functions only in a non-encryption *safe* mode, and cannot read/write encrypted data cartridges. However, the drive can function normally for non-encryption tasks.

Once the drive is encryption enabled, the LED turns red to indicate that the drive is *armed* and functioning in the encryption mode. In this state, the drive can read/write encrypted data cartridges. The drive can also read non-encrypted data cartridges, but cannot write to non-encrypted data cartridges.

FIGURE 1-2 Encryption Status LED (SL8500 Library Drive Tray)



C54103

The following table interprets the various states of the encryption status LED. Refer to the Crypto Key Management documentation for additional information.

TABLE 1-1 Encryption Status LED State Descriptions

LED State	Mode	Description
Green	Safe	Encryption capable, but not enabled. Normal-unencrypted drive write/read cartridge operations.
Red	Armed	Encryption enabled/active. Ready to encrypt.
Slow flashing Green ¹	Reset ²	Encryption previously enabled, but requires keys. Drive is capable read-only, unencrypted cartridge operations.
Slow flashing Red ¹		Encryption read/write cartridge operation in progress.
Amber		Requires media key.
Slow flashing Amber ¹		Requires device key.
Cycling ³	Zeroed	Media, device, and enabling keys missing. The drive is unusable, and must be returned to manufacturing.

1. Slow flash (1 cycle per second)

2. Drive is no longer capable of unencrypted write operation once encryption has been enabled.

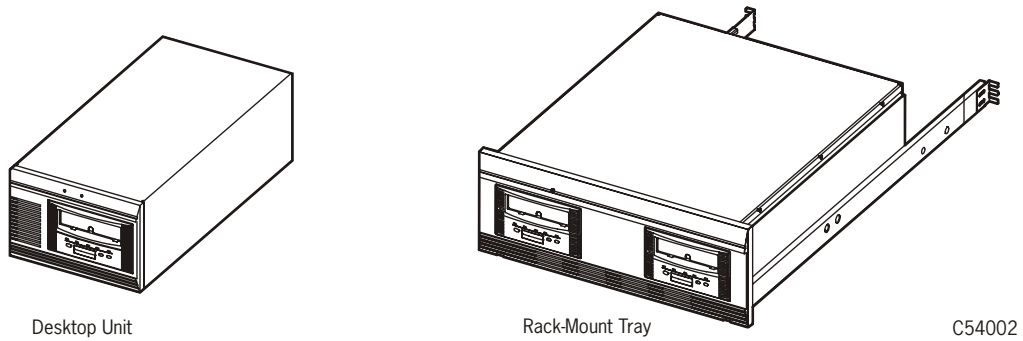
3. The LED continuously cycles through all three colors at the slow flash rate.

Configurations

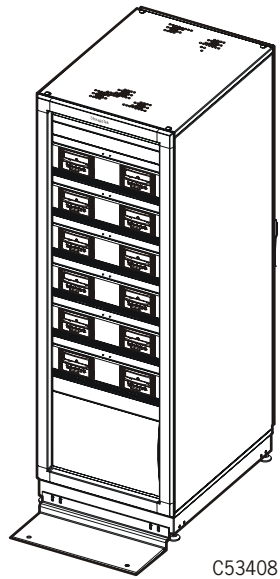
T9840 Tape Drives are available in desktop, rack-mountable, and library-attached configurations.

Manual Load Drive Units

Both the desktop and rack-mount configurations, shown in [FIGURE 1-3 on page 27](#), feature manual tape cartridge loading. The desktop version (T9840A/B) comprises a single drive and a power supply mounted within a cabinet with rubber feet. The rack-mount version includes a single drive or dual drives plus power supplies in a chassis (tray).

FIGURE 1-3 T9840 Desktop and Rack-mount Units

Up to six single-drive and/or dual-drive trays may coexist in a single cabinet, such as the stand-alone RACK001 shown in [Figure 1-4](#).

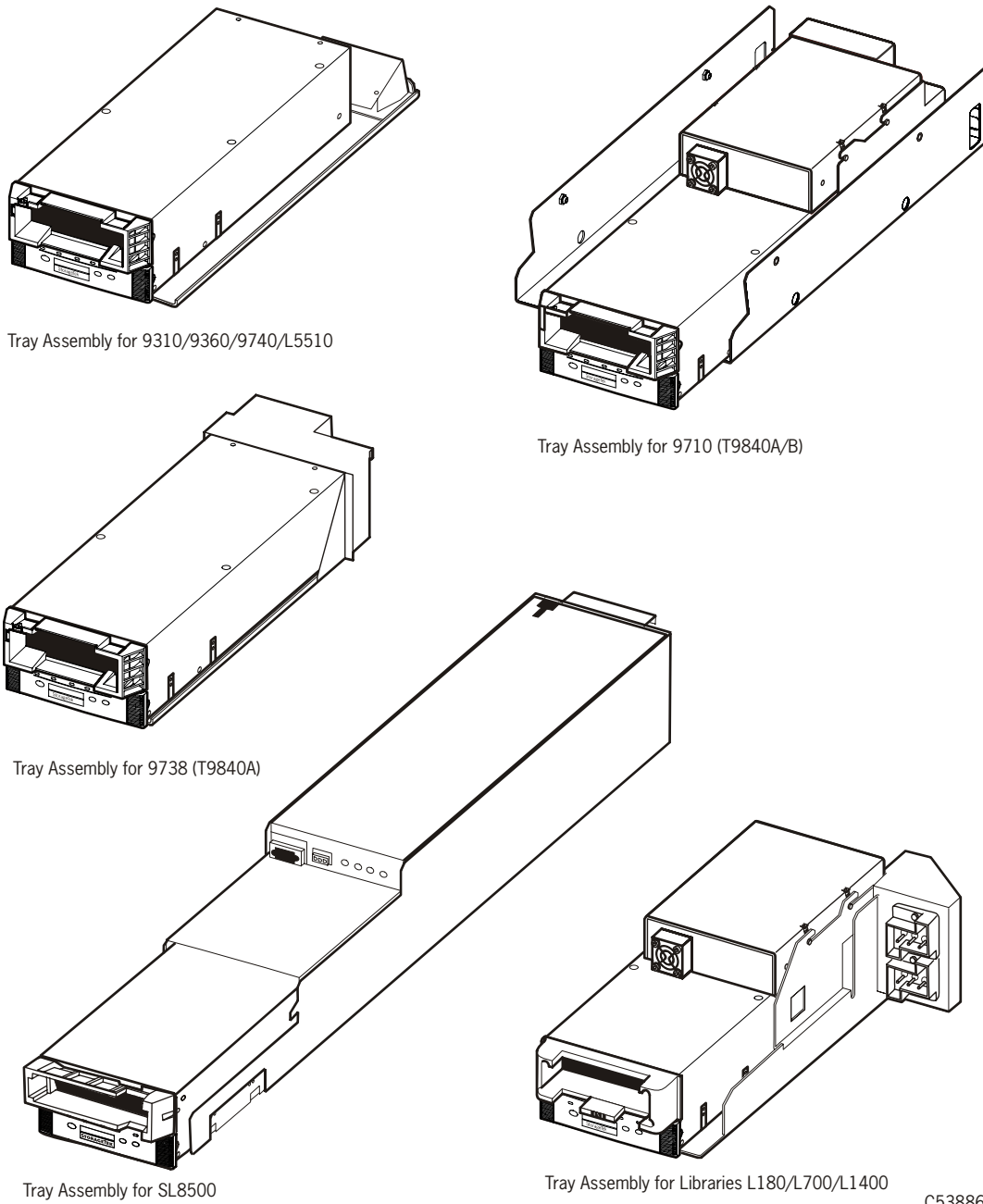
FIGURE 1-4 RACK001 with Six T9840 Rack-mount Drive Trays

Library Attached Configurations

The drive is available in configurations for various libraries; several are shown in the following figure.

Refer to the appropriate library documentation for additional information.

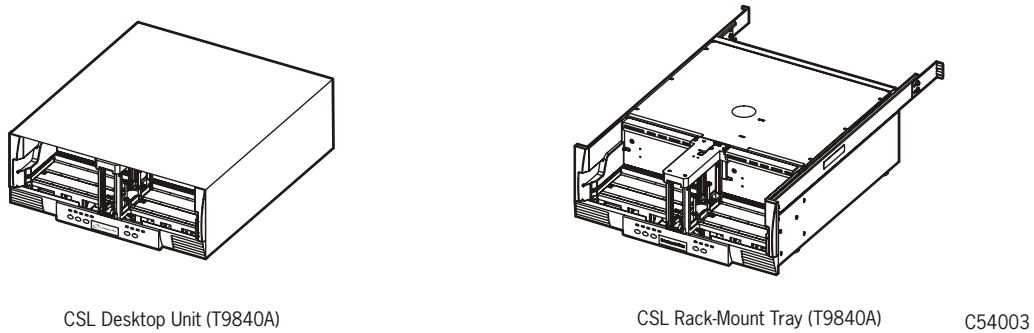
FIGURE 1-5 T9840 Tape Drive Library Attached Configurations



Cartridge Scratch Loader Drive Units

The cartridge scratch loader (CSL) configuration (T9840A only) features manual/automatic/system sequencing of up to six tape cartridges. Both the CSL desktop and rack-mountable units are shown in the following figure.

FIGURE 1-6 CSL Desktop and Rack-mount (T9840A)



The desktop version comprises a single drive, power supply, and loader mechanism contained in a cabinet with rubber feet. The rack-mountable version differs only in the cover, and the addition of rail assemblies for rack mounting. A single cabinet, such as the RACK001 can hold up to six CSLs, or combinations of CSLs and manual load drive units.

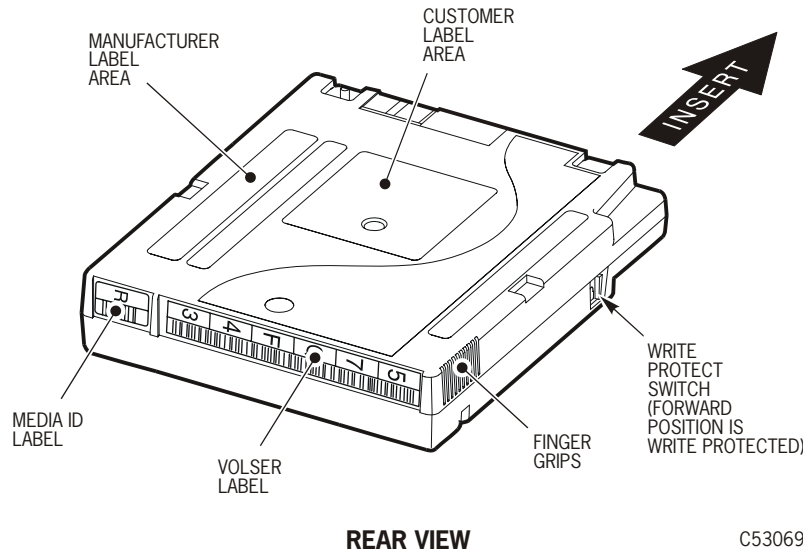
Interfaces

Host interfaces for the T9840 Tape Drive include Enterprise Systems Connection (ESCON), Fibre Channel (FC), Fibre Connection (FICON), or small computer system interface (SCSI). Not all interfaces are available for all configurations, see [TABLE A-7 on page 90](#).

Cartridges

The 9840 data cartridge shown in the figure below has the supply and takeup reels inside the cartridge which permits midpoint loading and fast access to data files.

FIGURE 1-7 9840 Tape Cartridge



The 9840 data cartridge has a typical capacity of:

- 20 GB, uncompressed when written by a T9840A or T9840B drive
- 40 GB when written by a T9840C drive (PRML data format)
- 75 GB when written by a T9840D drive (PRML data format)

See [TABLE 1-2 on page 31](#) for information regarding read and write compatibility.

The 9840 cleaning cartridge is capable of 100 cleaning operations. The media identification labels for 9840 Tape Cartridges have unique letters:

- R - 9840 standard and VolSafe data tape cartridges
- U - cleaning cartridge used with T9840A, T9840B, and T9840C drives
- Y - cleaning cartridge used with the T9840D drive only

A variation of the data cartridge is available for VolSafe (append-only) use.

- The manufacturer and media identification labels are yellow (9840A/B), green (9840C), or purple (T9840D).
- The write-protect switch is yellow (9840A/B), green (9840C), or purple (T9840D).
- Model-unique dimple pattern on the bottom of the cartridge case.

Call 1-877-STK-TAPE (785-8273) to order media or for media pre-sales support. To place orders electronically, send an e-mail to: us.mediaorders@sun.com or EMEA.mediaorders@sun.com.

For labels, contact EDP/Colorflex at 1-888-438-8362 or <http://www.colorflex.com>.

Mixed Media Management

Since T9840A, T9840B, T9840C, and T9840D drives use the same 9840 standard data cartridge, you should take extra media management measures when:

- T9840C drives co-exist in the same library system with T9840A/B drives
- T9840D drives co-exist in the same library system with T9840A/B/C drives

The extra measures essentially involve creation and management of separate media pools/sub-pools for:

- T9840A/B formatted/written data cartridges
- T9840C formatted/written data cartridges
- T9840D formatted/written data cartridges

Guidelines for creation and maintenance of media pools/sub-pools are located in ACSLS, HSC, and independent software vendor (ISV) documentation sets.

TABLE 1-2 Cartridge Read/Write Compatibility

Compatibility	Drive Model			
	T9840A	T9840B	T9840C	T9840D
Read a cartridge formatted by:	T9840A and T9840B	T9840A and T9840B	T9840A, T9840B, and T9840C	T9840A, T9840B, T9840C, and T9840D
Write or append data to a cartridge formatted by:	T9840A and T9840B	T9840A and T9840B	T9840C	T9840D

T9840A/B tape drives cannot read from a data cartridge written by either T9840C or T9840D tape drive because of the higher-density formats, and must have an appropriate drive firmware level to even identify the higher-density data cartridges:

- T9840A:
 - R1.33.103, or higher, to identify a T9840C written cartridge
 - R1.41.105, or higher, to identify a T9840D written cartridge
- T9840B:
 - R1.33.303, or higher, to identify a T9840C written cartridge
 - R1.41.305, or higher, to identify a T9840D written cartridge
- T9840C - R1.41.505, or higher, to identify a T9840D written cartridge

Without the appropriate drive firmware level, a T9840A/B drive would consider a higher-density formatted cartridge blank and available for scratch. T9840A/B drive attempts to read the data from an identified higher-density data cartridge will fail.

The T9840C or T9840D tape drive can read data from a tape cartridge written by a T9840A/B tape drive in the low-density format, but does not append data to that cartridge. An attempt to append a low-density data cartridge on a T9840C or T9840D drive will fail, and sense byte data indicates an error (similar to that of a file-protected data cartridge).

Note – For additional information about mixed-media management see [“Cross-Density MIR Processing”](#).

Media Information Region

The T9840 tape drives use information recorded on each tape cartridge to access and manage that tape cartridge while it is loaded in the drive. This information is recorded at the beginning of the tape in an area known as the Media Information Region (MIR). The information contained in the MIR falls into two major categories:

- Statistical Counters

Statistical counters include read/write activity, error activity, cumulative mounts and other information that reflects tape cartridge usage.

- Data Pointers

The data pointer information is basically a directory (map) used to locate the data on the physical tape media. Since user data is compressed and written in drive controlled blocks on the tape, a map is needed to efficiently locate the data after it is written. This map provides an index between user block ID's and the physical block on the tape media. Once the data is written, the drive accesses this map to optimize access to the user data.

A read to a user block ID is translated to the physical location on the tape media, and the drive determines the quickest method to read the block. If the block is some physical distance from the current location, a calculation results in a high-speed locate to the block location and is followed by a normal speed read.

The existence of the MIR is usually transparent to the user unless the MIR has a problem. This could occur if the MIR update fails during a dismount. The impact of an invalid MIR occurs in several areas. Since the MIR enables high speed positioning, an invalid MIR forces all operations to a slow speed mode. This has no impact on a sequential read from the beginning of the tape. However, an operation that could use high-speed locate defaults to a sequential slow speed read to the requested block, which can result in a longer processing time.

An invalid MIR might be suspected if you observe poor performance on a specific tape cartridge. The T9x40 drive also posts a 36B2 informational FSC whenever a tape cartridge with an invalid MIR is loaded.

The following sections describe MIR processing and some potential implications of MIR problems.

Normal MIR Processing

Every time a tape cartridge is loaded, the MIR is read from the tape media and saved in the drive memory. When the MIR is loaded in drive memory, an invalid flag is written in the tape-resident MIR. The tape-resident MIR is marked invalid because it does not reflect results of activity in the current mount session. All subsequent MIR accesses during the current mount session are saved in the memory-resident MIR.

When the tape cartridge is unloaded, as part of the unload routine, the memory-resident MIR information is written to the tape-resident MIR and the MIR invalid flag is turned off. A copy of the memory-resident MIR is stored in the drive's persistent memory (EEPROM) and used should the MIR fail to be written because of a power failure or firmware problem (SNO or should not occur).

Cross-Density MIR Processing

Whenever a data cartridge is loaded that was written in a data density format that is different from the one used when the drive writes, model-specific MIR processing occurs. The following explanations cover:

- T9840D tape drive loaded with a lower-density cartridge
- T9840C tape drive loaded with a T9840D-written data cartridge
- T9840C tape drive loaded with a T9840A/B-written data cartridge
- T9840A/B drive loaded with a high-density tape cartridge

T9840D Tape Drive Loaded With a Lower-Density Cartridge

When the T9840D drive detects that a data cartridge is loaded, the drive first looks in the designated location for a T9840D MIR. If a T9840D MIR is not found, the drive then checks for a T9840C MIR and, if its not found, it then checks for a T9840A/B MIR. The processing for these operations is described in the sections below. If the MIR cannot be read, the T9840D drive attempts to recover its contents using any portions of the MIR that can be read and the contents of the Format Identity Burst (FIB).

Note – The FIB is written in a format that can be read by T9840C and T9840A/B drives if they have an appropriate level of firmware.

The T9840D uses a memory-resident copy of the MIR to access user data pointers for read-only functions. Statistical counters are continuously updated in the memory-resident MIR with any drive activity.

When the data cartridge is unloaded, the T9840D drives writes the FIB to the high-density MIR location.

Notes:

- When the T9840D drive identifies the data cartridge as a low-density data format, i.e., written by a T9840C or T9840A/B, it displays Ready L on its operator panel.
- The T9840D tape drive cannot correct or cause an invalid MIR on a T9840C written data cartridge. A T9840C MIR can only become invalid during a mount on a T9840C drive.

- The T9840D tape drive cannot correct or cause an invalid MIR on a T9840A/B written data cartridge. A T9840A/B MIR can only become invalid during a mount on a T9840A/B drive.
- If a T9840C or T9840A/B written data cartridge has an invalid MIR, its contents cannot be read into the T9840D drive's memory and the user data pointer information will be unavailable. This causes a performance degradation.

T9840C tape Drive Loaded With a T9840D Data Cartridge

The T9840C drive will not be able to read the MIR written by a T9840D drive. Because it was written by a T9840D there will be no T9840A/B MIR. The T9840C drive will read the Format Identity Burst (FIB) written by the T9840D tape drive.

Note – The T9840C drive identifies the tape cartridge as high-density data format, and Ready H (high-density) appears in the T9840C operator panel display.

Since the T9840D written data cannot be read by the T9840C tape drive, the only actions available to the drive are:

- Unload the data cartridge
- Reclaim the data cartridge

If the data cartridge is reclaimed, the T9840C drive will include the statistical information from the T9840D FIB when it writes the T9840C MIR and FIB.

T9840C Tape Drive Loaded With a T9840A/B Data Cartridge

When a data cartridge is loaded into a T9840C, the drive first looks for a MIR at the high-density MIR designated location; and will not find a MIR if the data cartridge is in low-density data format. The high-density MIR location will be blank if it is the first time the low-density data cartridge is loaded into a T9840C drive. This causes the drive to look at the low-density MIR designated location, where it finds a MIR and reads it into drive memory (invalid flag is not set).

The T9840C drive uses the memory-resident MIR for user data pointers for read-only functions. During the first mount session, the drive captures statistical counters from the MIR into a memory area called the Format Identity Burst (FIB), and continues to build it with drive activity.

Note – The FIB is written in a special format which can also be read by T9840A/B drives with the appropriate drive firmware level.

During the unload routine, the T9840C drive writes the FIB to the high-density MIR designated tape location. The tape-resident, low density MIR remains intact and valid.

Notes:

- The T9840C drive identifies the tape cartridge as low-density data format, which results in the display of Ready L (low-density) on the T9840C operator panel.
- The T9840C tape drive cannot cause nor correct an invalid MIR on a low-density data cartridge. A low-density MIR can only become invalid during a mount on a T9840A/B tape drive.

- If a low-density data cartridge MIR is invalid, it is not read into the T9840C drive memory, and not available for user data pointer information. Therefore, T9840C performance for a low-density data cartridge with an invalid MIR is degraded.
- Since a T9840C tape drive cannot correct nor rebuild a low-density data cartridge invalid MIR, the only options for increasing performance are:
 - i. Migrate the data to a high-density format cartridge, using a copy utility with a second T9840C drive
 - ii. Rebuild the MIR with a T9840A/B tape drive
 - iii. Operate with degraded performance

On subsequent mounts, the T9840C drive first sees the tape-resident FIB, identifies the tape cartridge as low-density, and reads the low-density MIR into drive memory. At dismount, the T9840C updates the tape-resident FIB with cumulative data, including newer statistical data from the MIR, if the cartridge had been loaded into a T9840A/B drive since the last mount in a T9840C drive.

T9840A/B Tape Drives

When a high-density data cartridge is loaded into a T9840A/B drive with appropriate level firmware, the drive looks for a low-density MIR at the default location but finds a Format Identity Burst (FIB), which identifies the cartridge as formatted in a high-density. Since the T9840A/B drive cannot read nor write higher-density data, subsequent normal read/write attempts will fail unless the cartridge is being reclaimed.

A T9840A/B drive cannot update statistical data, such as the mount/dismount count in the FIB. Therefore, cumulative statistical data will not include mounts into a T9840A/B drive as long as the tape cartridge is in high-density format.

The tape cartridge could be deliberately over-written in low-density data format from the beginning-of-tape point, or reformatted to low-density data format by the offline Drive Operation, Make Data Tape submenu. Either case over-writes the FIB with a low-density MIR, and erases the high-density MIR. Such a reformatted data cartridge is no longer identifiable as a high-density data cartridge, but does include the statistical data read from the FIB.

When a low-density data cartridge with a tape-resident FIB (created by a T9840C or T9840D drive) is loaded into a T9840A/B drive with appropriate level firmware, the MIR is read into drive memory and an invalid flag is written to the tape-resident MIR. During the unload routine, the T9840A/B drive compares statistical data in the tape-resident MIR with statistical data in the tape-resident FIB, and uses the latest data to calculate the statistical data update into the new tape-resident MIR.

Notes:

- The T9840A/B drive shows Ready H on the operator panel when a cartridge written by a T9840C or T9840D drive is loaded.
- If the last load was into a T9840A/B drive, the tape-resident MIR will contain the latest statistical data; whereas, if the last load was into a T9840C or T9840D drive, the tape-resident FIB contains the latest data.
- In order to recognize a high-density data cartridge written by a T9840C or T9840D drive, and to properly handle a low-density data cartridge that has been previously loaded into a T9840C or T9840D drive, T9840A/B drives must have the appropriate drive firmware level, refer to [“Mixed Media Management” on page 31](#).

- If a T9840A/B drive has down level drive firmware, a high-density data cartridge would be considered as a blank tape cartridge; and, a low-density data cartridge would lose statistical data stored in the FIB during a previous mount into a T9840C drive.

Exceptional MIR Processing

There are instances when the MIR process departs from the normal.

- Write Protect

When the tape cartridge is write protected, neither the MIR nor FIB is rewritten and statistical information for that mount is not captured. If the tape cartridge is in a library that logically write protects the tape cartridge, the MIR is updated as normal on each dismount.

- Major Error/Power Off

If a tape cartridge is mounted and the drive SNO's (should not occur error) or loses power, the drive memory-resident MIR is not written to the tape media. Instead after IPL (initial program load), the drive will read the existing MIR on tape. Special data is saved in EEPROM that will allow the existing MIR to be updated and rewritten to the media with the valid flag set. Therefore, the MIR will contain all positioning information up to the last mount and this tape will operate with mixed performance until EOD is found. T9840A/B/C drives must have the appropriate drive firmware level to update the MIR after a SNO or power loss, refer to [“Mixed Media Management” on page 31](#).

Invalid MIR Correction

Once a tape cartridge has an invalid MIR, some action is required to correct it. An invalid MIR can be corrected in several ways using the drive model that created the cartridge (for example: a T9840A/B formatted cartridge in a T9840A/B drive or a T9840C formatted cartridge in a T9840C drive).

1. Reading to the end of existing data (EOD) creates a complete and valid MIR. This is done at normal read speeds and could take up to 45 minutes, for a full 9840 tape cartridge.
2. Appending to the tape cartridge will also create a valid MIR, although a slow speed read must first be done to the end of existing user data.
3. The Drive Operation Menu (offline) “Rebuild MIR” utility will sequentially read from block ID 0 to the EOD. The MIR will be complete and valid when the tape cartridge is unloaded (see [“Build MIR” on page 72](#)).
4. The Drive Operation Menu (offline) “Make Data Tape” utility will reformat the tape cartridge with a valid MIR. However, all previous data will be lost (see [“Reformat a Cartridge” on page 71](#)).

The memory-resident MIR is always rebuilt to the last block read, on-the-fly, during normal read/write functions. When the partially rebuilt memory-resident MIR is written to the tape during the download process, the invalid flag is reset because the MIR is now partially valid. This can result in seemingly conflicting performance from a single tape.

Notes:

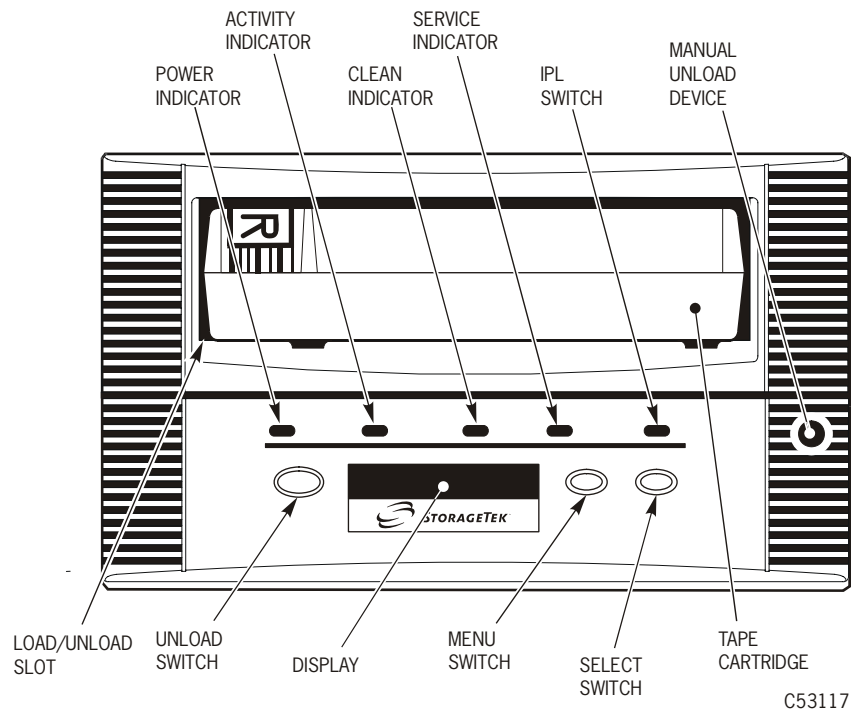
- If a tape cartridge with a partially valid MIR is mounted for long periods of time with locates to different locations, locate times will be inconsistent depending on whether the locate is to a record already in the rebuilt MIR, or if some low speed locate is required.
- The longer the tape cartridge is mounted and the more activity occurs, the more rebuilt the memory-resident MIR becomes. Once the EOD is reached, the MIR is complete and valid.

Operator Panel

Front Panel

The T9840 tape drive front panel is the operator's interface with the drive. The panel features: a cartridge load/unload slot, four indicator lights, four switches, a manual unload device, and an alphanumeric display with an optional tape bar (FIGURE 2-1).

FIGURE 2-1 T9840 Operator Panel



Chapter 4, “Operator Tasks” describes how to use the switches to perform operations. Chapter 5, “Indicators and Messages” describes how to interpret the indicators and display messages.

Load/Unload Slot

The load/unload slot is the opening in the front panel that accepts 9840 Tape Cartridges, loaded by hand, by a T9840A CSL, or by a robotic hand in a library. After a tape cartridge is inserted, the loader mechanism raises to engage the tape cartridge and draw it into the loaded position. After an unload command, the loader mechanism rewinds the tape to the mid-point, and ejects the cartridge into the slot for removal.

Indicators

TABLE 2-1 describes T9840 Tape Drive operator panel indicators.

TABLE 2-1 Operator Panel Indicators

Indicator	Indication	Explanation
<i>power</i> (green)	Off: Flashing: Flashing does not stop: On (steady):	Power is not applied. Unit is powering up, performing IPL, or collecting dump data. IPL failed. Power applied and IPL complete.
<i>activity</i> (green)	Off: Flashing: On (steady):	Tape cartridge is not loaded. Tape cartridge is loaded and the tape is moving. Tape cartridge is loaded and the tape is stopped.
<i>clean</i> (amber)	On (steady):	Drive requires cleaning because: 1. A firmware-defined length of tape has passed over the R/W heads. 2. A read/write perm (permanent error) is detected, and at least one-half the firmware-defined length of tape has passed over the R/W heads. See “Clean the Drive” on page 73 for use of cleaning cartridges.
<i>service</i> (red)	Off: Flashing: On (steady):	Error(s) have not been detected. Error(s) detected and dump data has been saved to the EEPROM. The message <code>DumpAgain?</code> displays if the drive detects the same Fault Symptom Code (FSC) within one minute. Manually initiate IPL. If the IPL does not eliminate the problem, contact authorized service personnel. A hardware error is detected and the drive is not functional. If a manually initiated IPL does not eliminate the problem, contact authorized service personnel

Switches

TABLE 2-2 describes T9840 operator panel switch functions.

TABLE 2-2 Operator Panel Switches

Switch	Description
Menu	Pressing the Menu switch accesses the menu system, steps through a series of submenus, or answers No to a displayed question. Pressing the Menu switch the first time causes the Online/Offline selection to display. See x for information/guidance with the menu system.
Select	Pressing the Select switch accesses a displayed submenu, steps through possible options of a submenu, or answers Yes to a displayed question. When the drive is Online, and the display is showing a view only configuration submenu, pressing Select is same as pressing Menu.
IPL	Pressing the IPL switch causes the drive to execute an initial program load (IPL) sequence. During IPL, the drive firmware loads from non-volatile memory in an EEPROM, to RAM. The same process occurs at power-on.
Unload	Pressing the Unload switch causes the tape cartridge to rewind, unthread, and unload; ending with the tape cartridge ejected and retrievable. If this switch is pressed during a write operation, the drive attempts to write the remaining data before it unloads. A display of UnWr xxxx (meaning Unwritten Data, where xxxx is a fault symptom code) means that the attempt failed and some data remains unwritten to tape. Note – Pressing Unload a second time causes the unwritten data to be lost. Before you press Unload again, see UnWr xxxx on page 81.

Front panel switches are color coded by drive model:

- T9840A - Yellow
- T9840B - Purple
- T9840C - Green
- T9840D - Deep Purple

Manual Unload Device

The manual unload device (MUD) is a mechanism to manually remove a tape cartridge from the drive if the Unload switch action fails, or power to the drive is unavailable. The MUD is screwdriver operated to lower the loader mechanism and position the cartridge to be manually pulled out of the load/unload slot. Only qualified service personnel should operate the MUD.

Display

The operator panel has an 10 segment, alphanumeric display that indicates:

- Drive status
- Menu selections and configuration choices
- Error messages and fault symptom codes
- Host-generated messages
- Tape bar, if activated

The display is formed by a horizontal array of 10 segments. Each segment is formed by an array of 35 dots—five wide and seven high. Each array can form an uppercase or lowercase alpha character, a numerical digit, or a special character, such as an asterisk (*). When the tape bar is not activated, the lighted segments and dots form text messages. The text messages may display steadily, flashing, or alternating with other messages.

Tape Bar

The tape bar uses the operator panel display to show the amount of tape that has been written and read. The tape bar is a configuration option that must be activated by authorized service personnel. Once activated, it appears on the operator panel display when the drive is reading or writing.

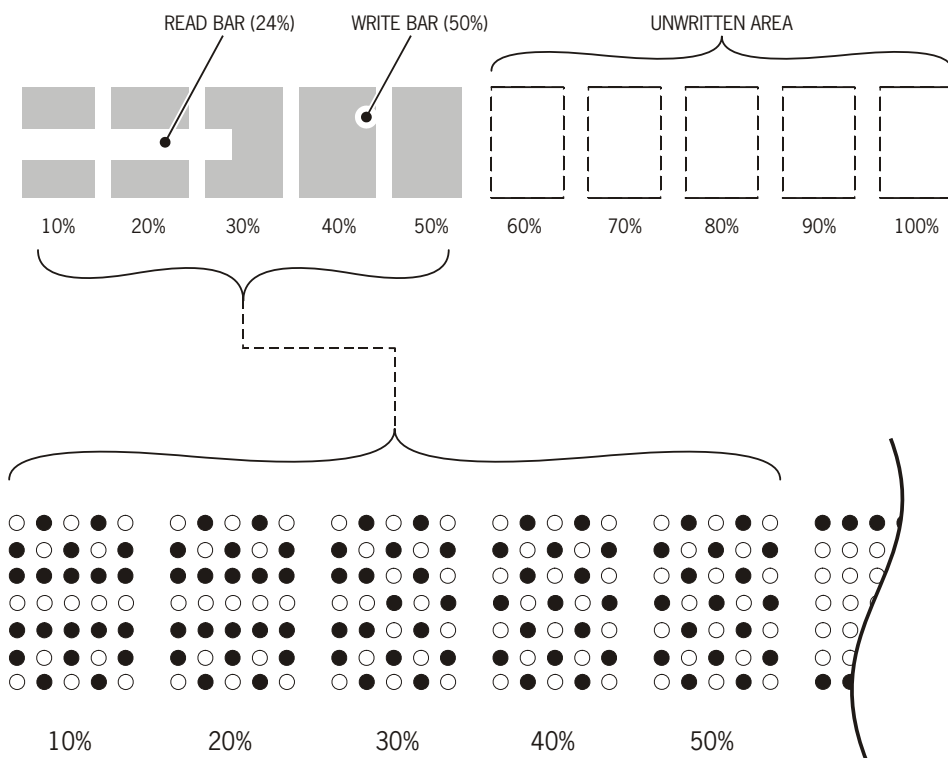
When the tape bar is activated, the segments and dots simultaneously show the percentage of the total tape length that has been written and read. Each dot represents 2% of the tape length; each segment represents 10%.

Note – The tape bar gets its information from the media information region (MIR) on the tape. The MIR is written to the tape when the tape is unloaded. If the MIR is bad, the tape bar does not display. To rewrite the MIR, see [“Build MIR” on page 72](#).

Write Bar

As data is written to tape, the lighted dots forming the write bar appear at the left side of the display and advance to the right. The write bar uses the full height of the display. As the dots fill the display, note that only every other dot is lighted. The point where the write bar ends is the percentage of tape written.

FIGURE 2-2 Tape Bar



C53412

Read Bar

As data is read from the tape, the read bar appears in the center of the write bar as a single row of unlighted dots. This row is bordered above and below by single rows of lighted dots. The read bar also begins at the left side of the display and advances to the right. The point where the read bar ends is the percentage of tape that has been read.

FIGURE 2-2 is a simplified and an actual view of a tape bar that shows a tape that is 50% written and 34% read.

SL8500 Library Controls/Indicators

When a T9840 Tape Drive is attached to the SL8500 Modular Library System, you cannot access the drive operator panel, nor is there a rear operator panel.

SL8500/T9x40 Drive Tray

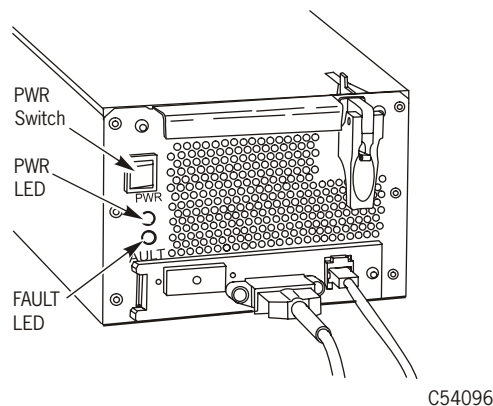
FIGURE 2-3 illustrates the power switch and indicators on the rear panel of the SL8500/T9x40 drive tray.

- The power (PWR) switch is a momentary push-switch that manually changes the state of the internal power supply PWA.
- The green PWR LED indicates the power state of the tray:
 - Not lit:** Power is not on, nor is 48 Vdc input power applied to the tray
 - Blinking:** Power is not on, but 48 Vdc input power is applied to the tray
 - Steady:** Power is on, and power supply output voltages are normal
- The red FAULT LED indicates anomalies within either the internal power supply PWA, or with the drive tray fan assembly.

Notes:

- Library firmware controls the drive tray power and indicators.
- The red FAULT LED DOES NOT indicate drive-related anomalies.
- Pressing the SL8500 drive tray PWR switch, while the tray is powered, DOES NOT cause an interrupt signal to the library firmware. You must wait at least 10-seconds before pressing the PWR switch to manually power-on the drive. Otherwise, the library's drive audit will be corrupted. Generally, when the red FAULT LED comes on (after power-off), it is safe to re-push the PWR switch to reapply power to the drive tray.

FIGURE 2-3 SL8500/T9840 Drive Tray Rear Panel



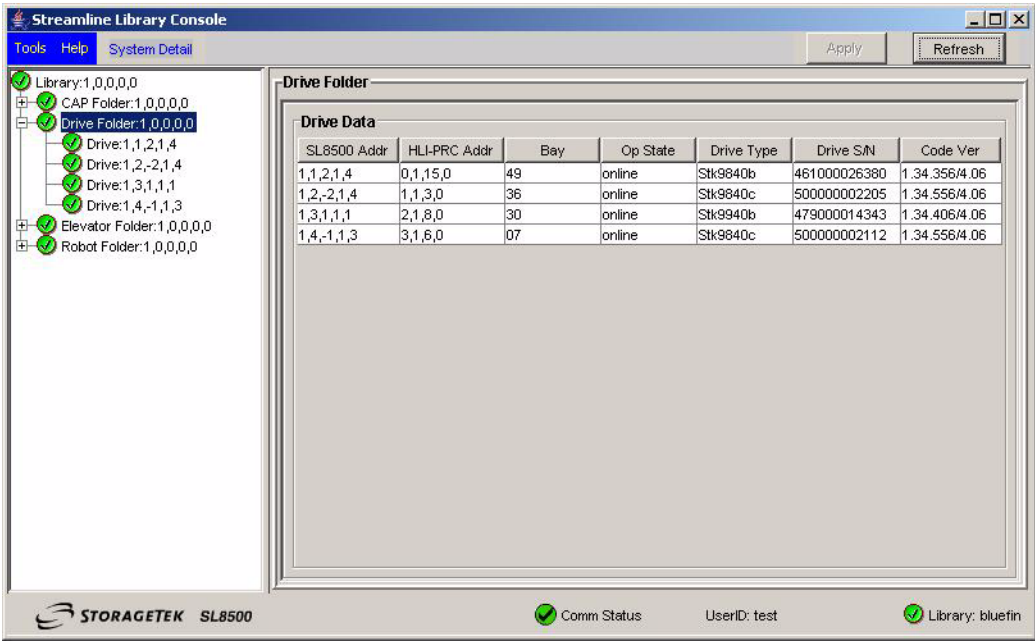
StorageTek Library Console

Although you cannot access the T9840 Tape Drive Operator Panel to view menu items, you can use the StorageTek Library Console (SLC), local or remote, to display data pertinent to the attached drives.

Drive Folder Top Level Display

FIGURE 2-4 shows an overall summary of the Drive Folder. The left window pane displays library folders in a tree format, which you can expand or collapse.

FIGURE 2-4 SL8500 SLC Drive Folder Display



The right window pane summarizes drive data in a tabular format, whether you expand or collapse the drive folder tree view. You can customize how the data is displayed, by sorting the rows, relative to a selected column, and/or reordering/resizing the columns.

Notes:

The "HLI-PRC Addr" column displays the host software logical address for the drive, relative to the specific host software.

The "Op State" column is online/offline relative to the library drive controller, and not relative to the drive, menu-driven online/offline.

The "Code Ver" column displays the drive's current firmware level, including the drive interface sub-module level. Interface level 4.06, or higher is required for proper SL8500 operation.

Drive Specific Displays

When you select an individual drive in the tree window, the right window will change to display additional data relative to the selected drive, instead of the drive folder summary data.

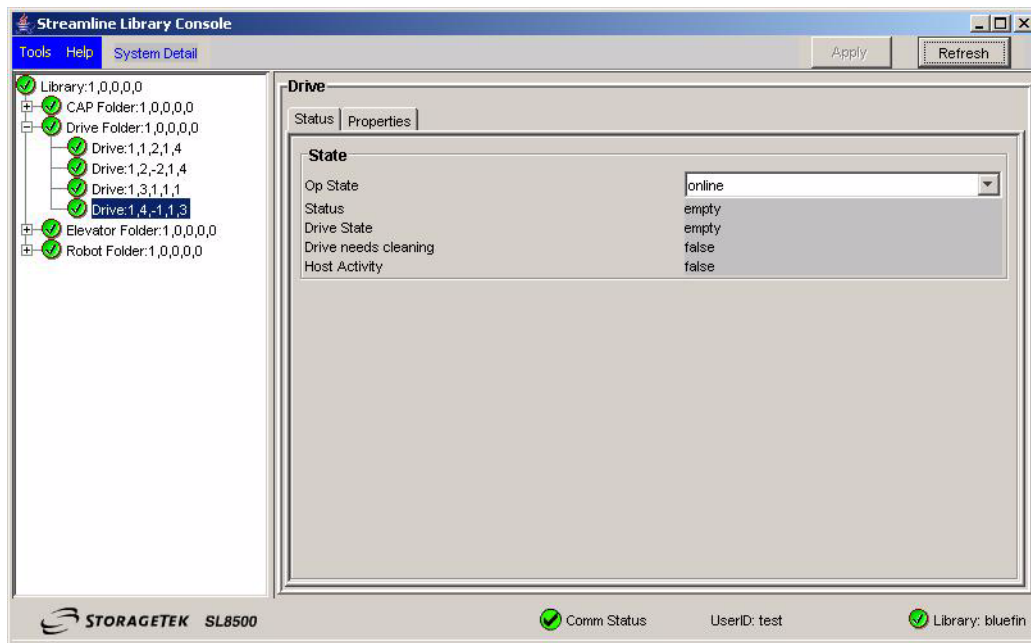
Note – The drive displays are evolving; therefore, what is presented here is for illustrative purposes only.

Currently, the Status and Properties display tabs are available:

Status

The tab shown in [FIGURE 2-5](#) displays key drive status data.

FIGURE 2-5 SL8500 SLC Drive Status Display

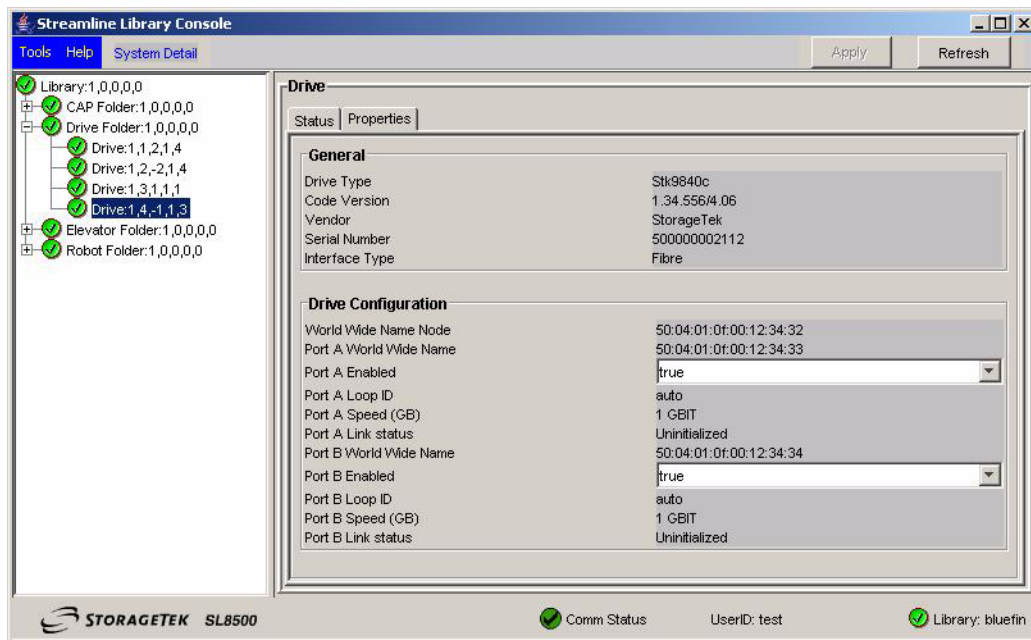


Properties

The General block of this tab, [FIGURE 2-6](#), displays some of the data from the drive folder summary, but also includes the drive interface type (not displayed in the summary).

The Drive Configuration block displays selected configuration items, such as dynamic World-Wide-Name (dWWN) which is auto-set, relative to the drive bay number, by the library firmware.

FIGURE 2-6 SL8500 SLC Drive Properties Display



You can view and use the SLC drive displays to develop reports to support and analyze drive-related problems.

Note – Additional general guidance on using the SLC application is available within the SLC “Help” function.

Menus

The menu system provides the operator and service representative a means to determine drive configuration settings, access drive utilities, and display the drive firmware level.

The menu system information and guidelines are provided in the following order:

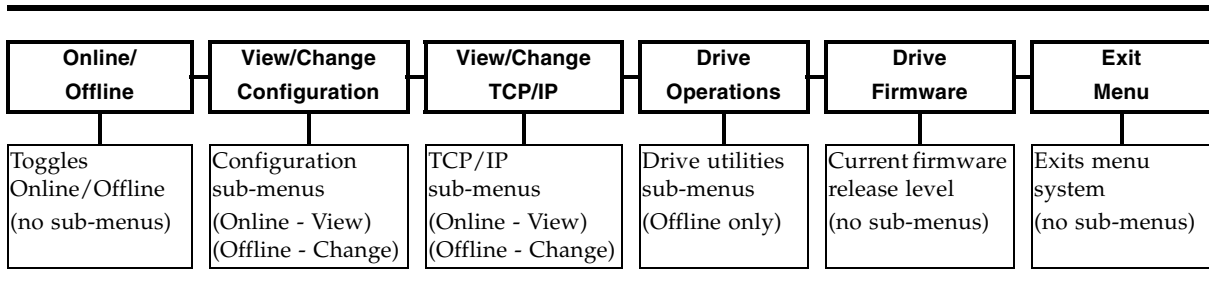
1. [“Menu Structure Overview” on page 49](#)
2. [“Menu Operations” on page 50](#)
3. [“Online Menu Operation” on page 50](#)
4. [“Offline Menu” on page 61](#)

Menu Structure Overview

The drive has two main menus. The main menu that appears when the drive is online is primarily for viewing the drive configuration settings. The main menu that appears when the drive is offline is primarily for changing the drive configurations. Use the Menu and Select switched to navigate through the menu system.

- Press Menu (No) to bypass and advance to the next menu.
- Press Select (Yes) to enter the submenus.

When you press the Menu switch on the operator panel, the first menu provides selection of Online (default) or Offline menu. Press the Select switch to toggle between online mode and offline mode as desired, then press the Menu switch to advance to the next menu.



View/Change Configuration menus display drive configuration settings (view only) when online, or allow drive configuration changes when offline. Press **Menu** to advance the display to the next menu. Press **Select** to enter the submenus.

View/Change TCP Configuration menus display the drive Transmission Control Protocol /Internet Protocol (TCP/IP) configuration settings (view only) when online, or allow TCP/IP configuration changes when offline. Press **Menu** to advance the display to the next menu. Press **Select** to enter the submenus.

Drive Operations menus (*offline only*) provide drive utilities. Press **Menu** to advance the display to the next menu. Press **Select** to enter the submenus.

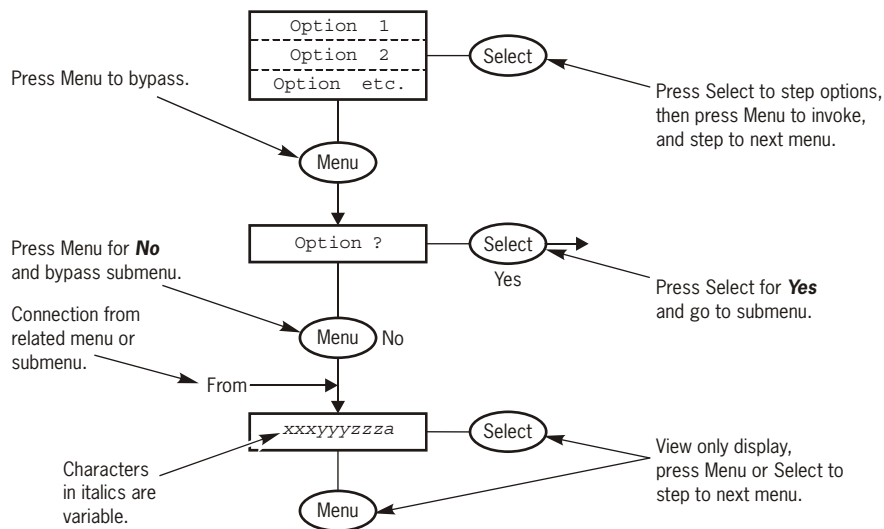
The Drive Firmware menu displays (*view only*) the current drive firmware release level.

The Exit Menu allows you the choice to either loop-back to the Online/Offline selection menu by pressing **Menu** or to exit the menu system by pressing **Select**.

Menu Operations

FIGURE 3-1 is a legend for navigating the menu trees shown in this chapter.

FIGURE 3-1 Menu Tree Legend



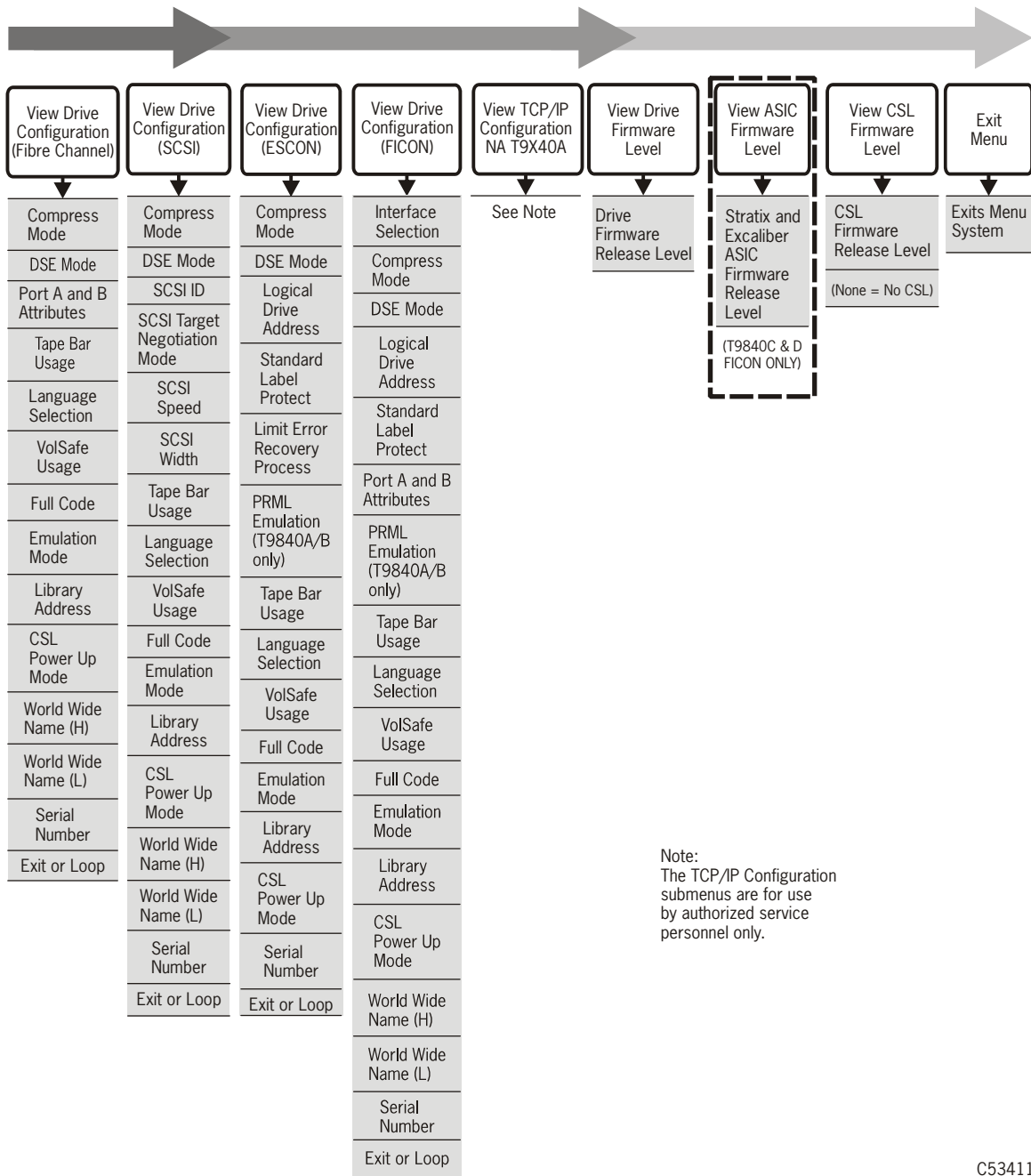
C53885

Online Menu Operation

When the drive is Online, the menus shown in FIGURE 3-2 are available. Press **Menu** to advance to the View Configuration menu.

- View the drive configuration
- View the TCP/IP configuration (N/A for the T9840A)
- View the drive firmware level
- View the ASIC firmware level (FICON drives only)
- View the CSL firmware level

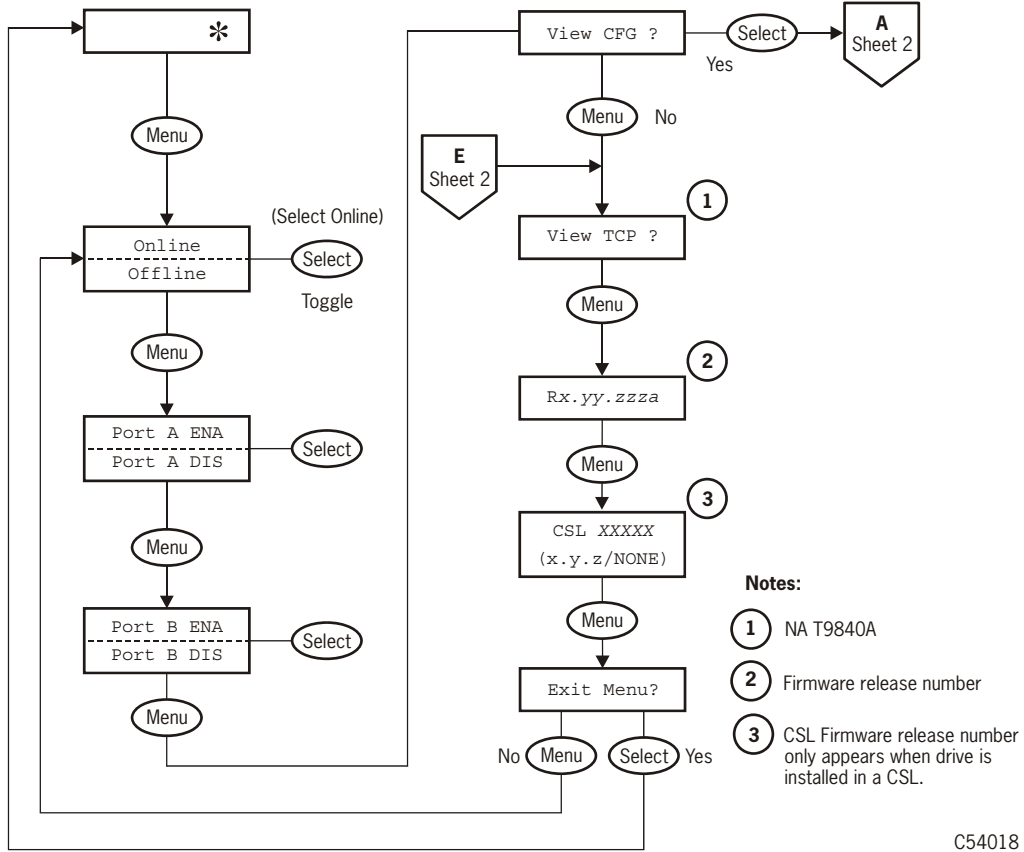
FIGURE 3-2 Online Menus



C53411

FIGURE 3-3 through FIGURE 3-5 on page 54 show the view configuration menu tree for the Fibre Channel interface.

FIGURE 3-3 View Fibre Channel Menu Tree (Part 1 of 3)



C54018

FIGURE 3-4 View Fibre Channel Menu Tree (Part 2 of 3)

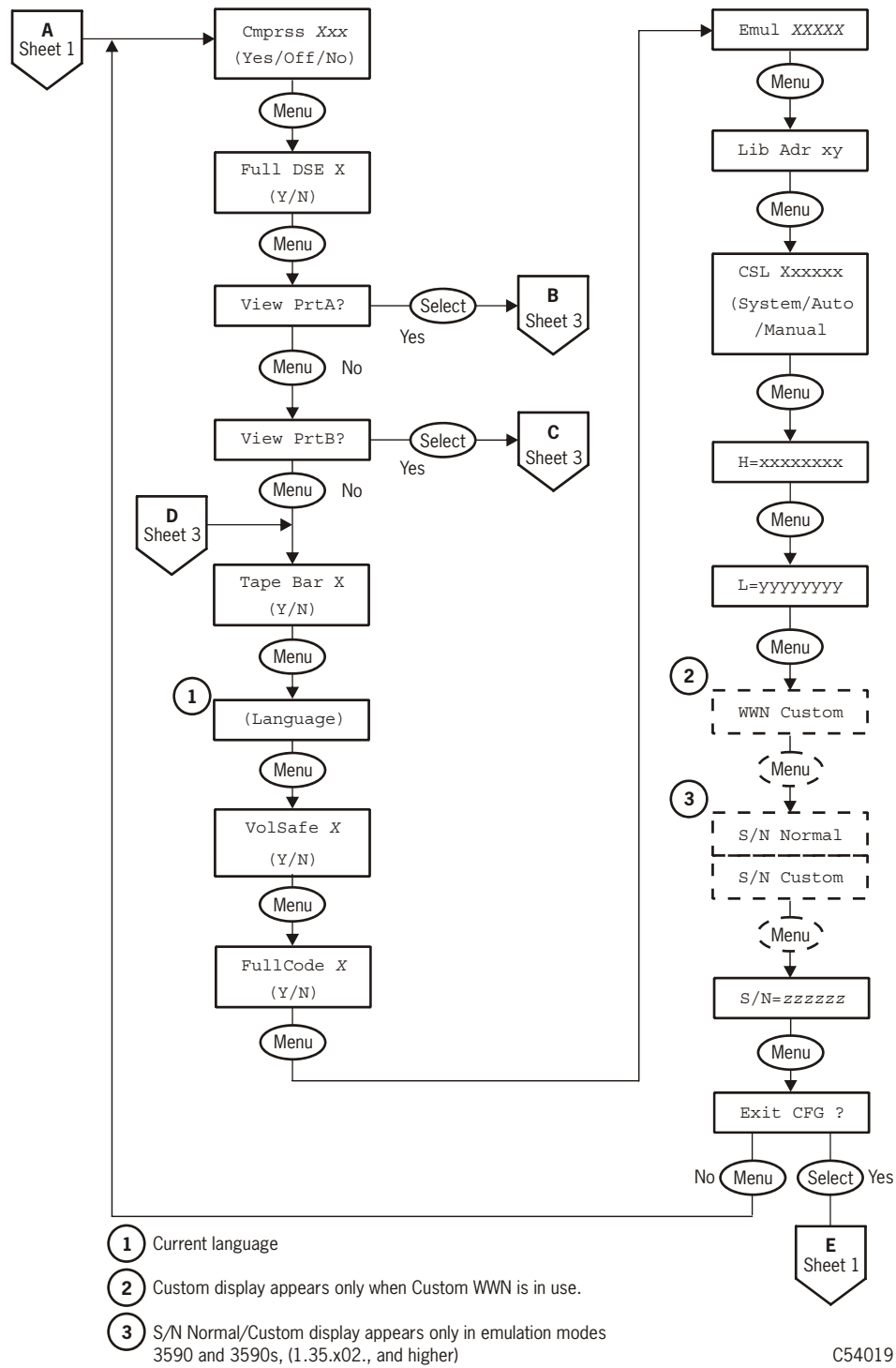
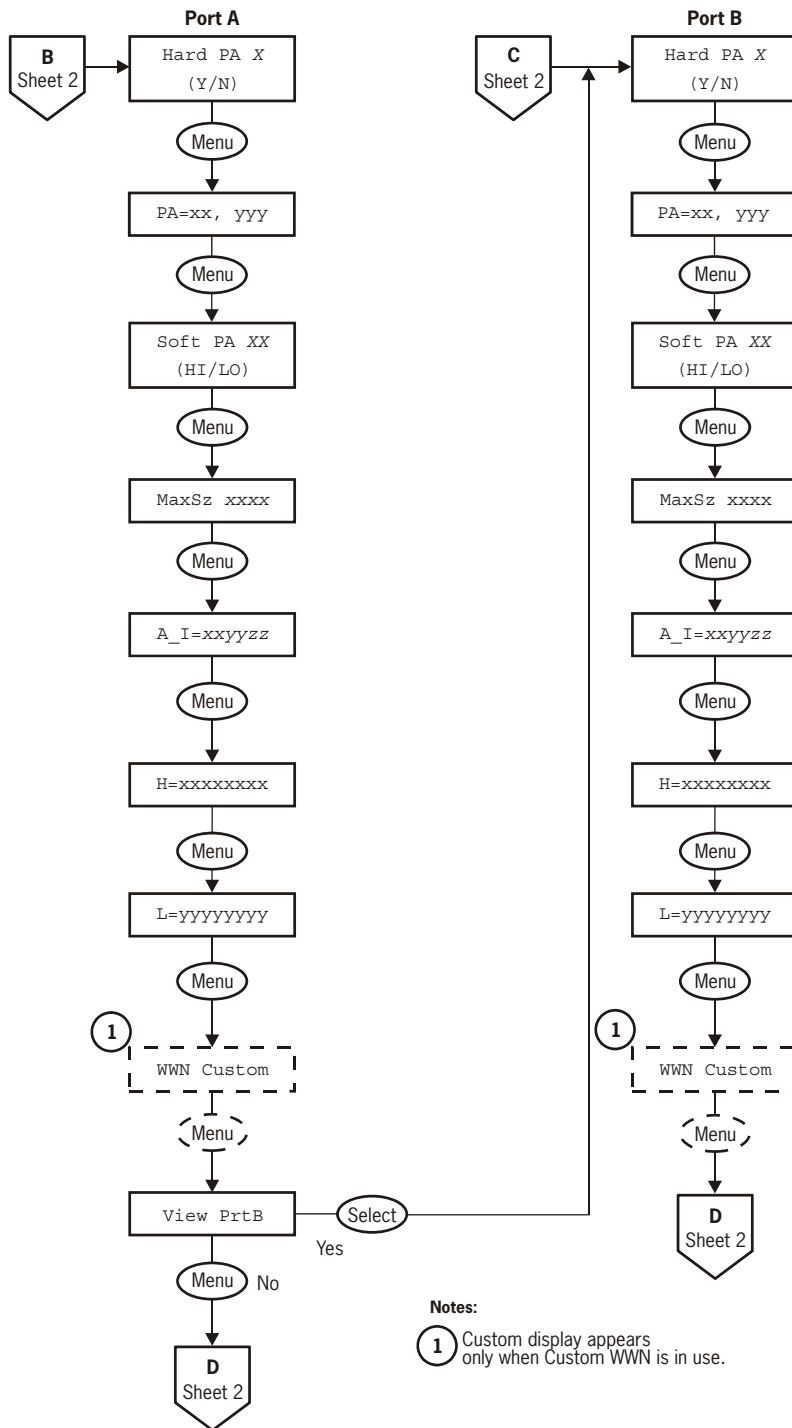


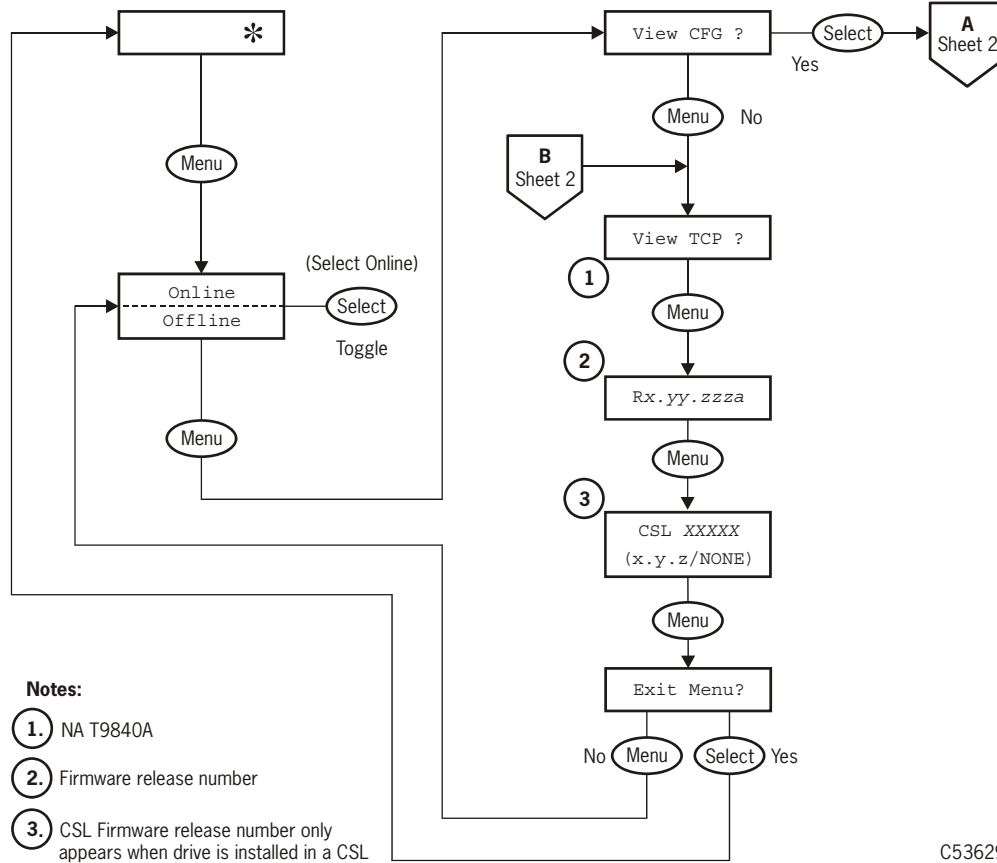
FIGURE 3-5 View Fibre Channel Menu Tree (Part 3 of 3)



C54020

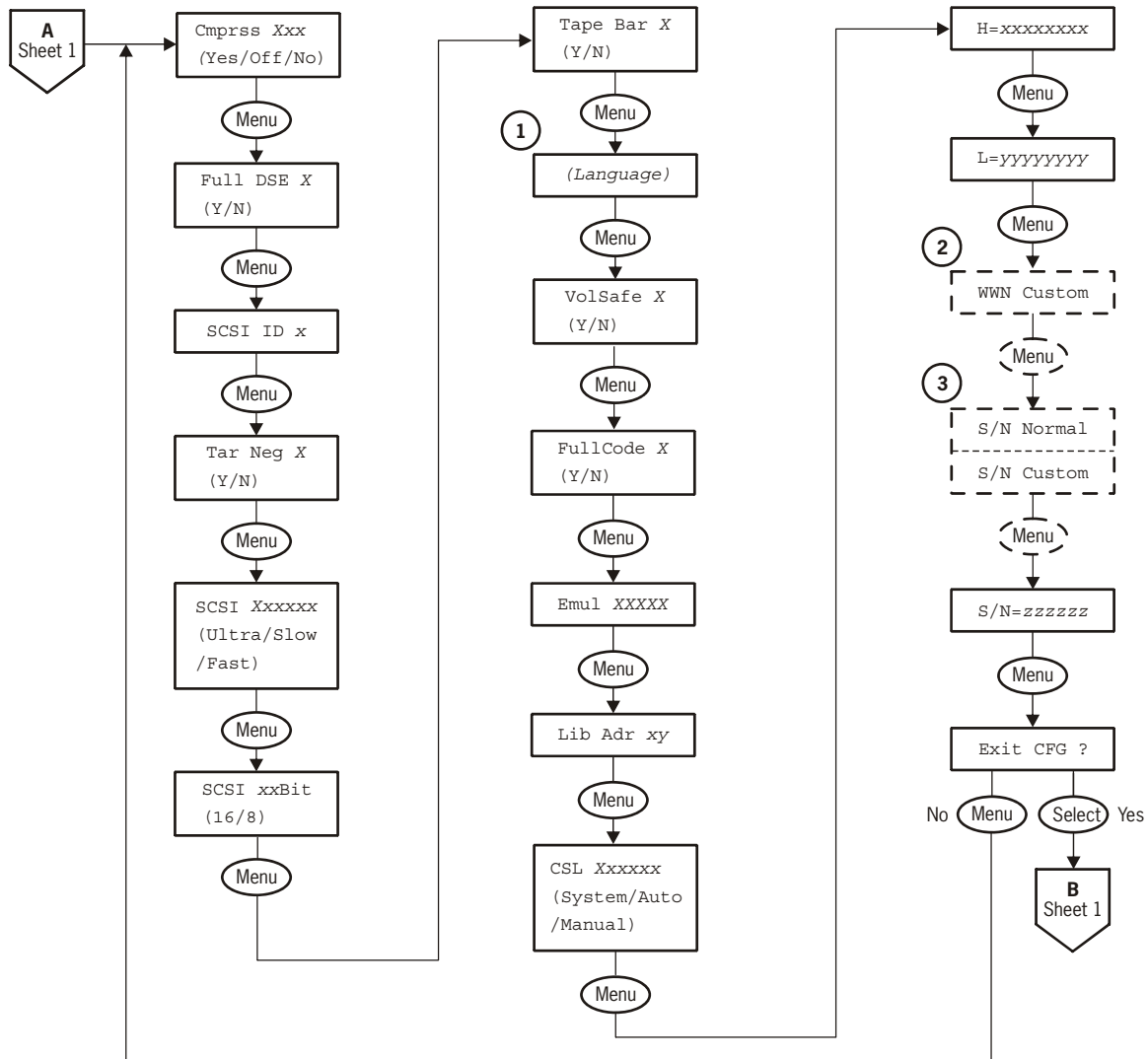
FIGURE 3-6 through FIGURE 3-7 on page 56 show the view configuration for the SCSI interface.

FIGURE 3-6 View SCSI Configuration Tree (Part 1 of 2)



C53629

FIGURE 3-7 View SCSI Configuration Tree (Part 2 of 2)

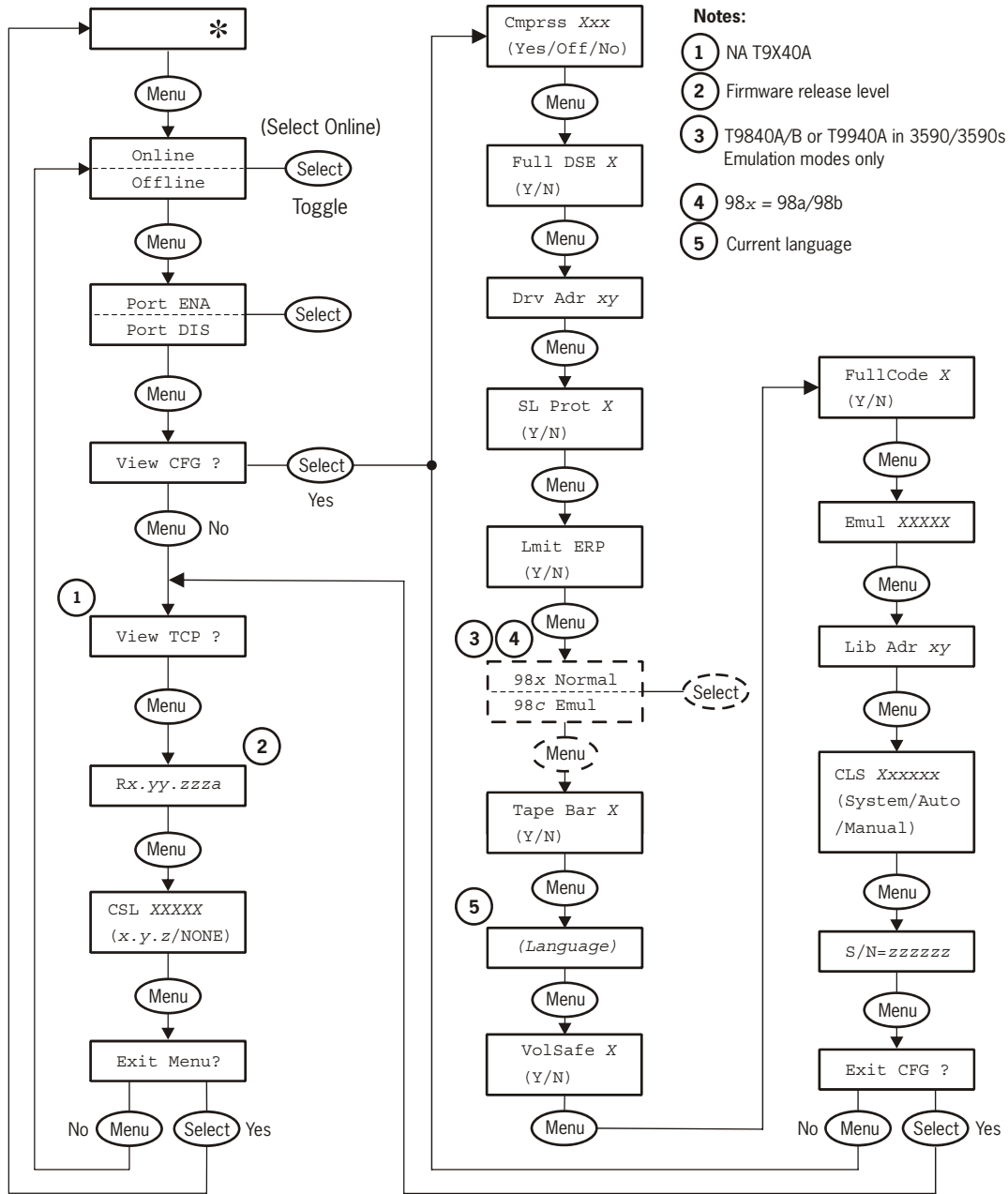


- ① Current language selection.
- ② Custom display appears only when Custom WWN is in use.
- ③ S/N Normal/Custom display appears only in emulation modes 3590 and 3590s, (1.35.x02., and higher)

C54036

FIGURE 3-8 shows the view configuration menu tree for the ESCON interface.

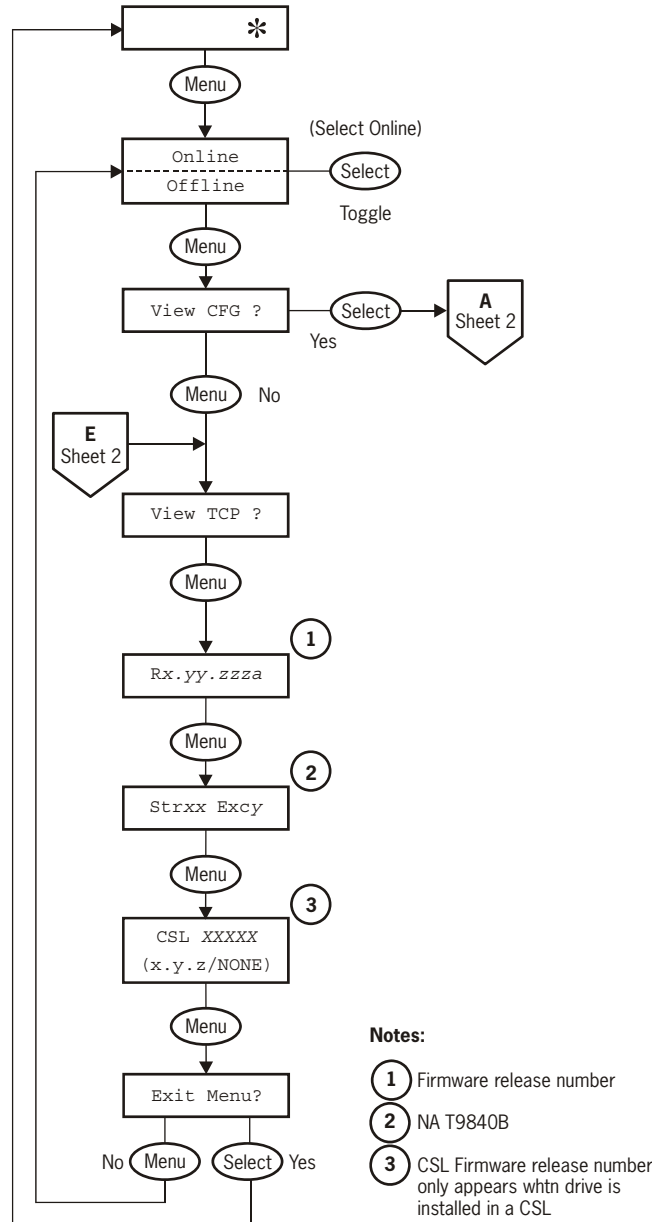
FIGURE 3-8 View ESCON Configuration Menu Tree



C53630

FIGURE 3-9 through FIGURE 3-11 on page 60 show the view configuration menu tree for the FICON interface based upon drive code level 1.36.504. The T9840D drive code presents the configuration submenu items in a different order.

FIGURE 3-9 View FICON Configuration Menu Tree (Part 1 of 3)



- Notes:**
- 1 Firmware release number
 - 2 NA T9840B
 - 3 CSL Firmware release number only appears whtn drive is installed in a CSL

C54021

FIGURE 3-10 View FICON Configuration Menu Tree (Part 2 of 3)

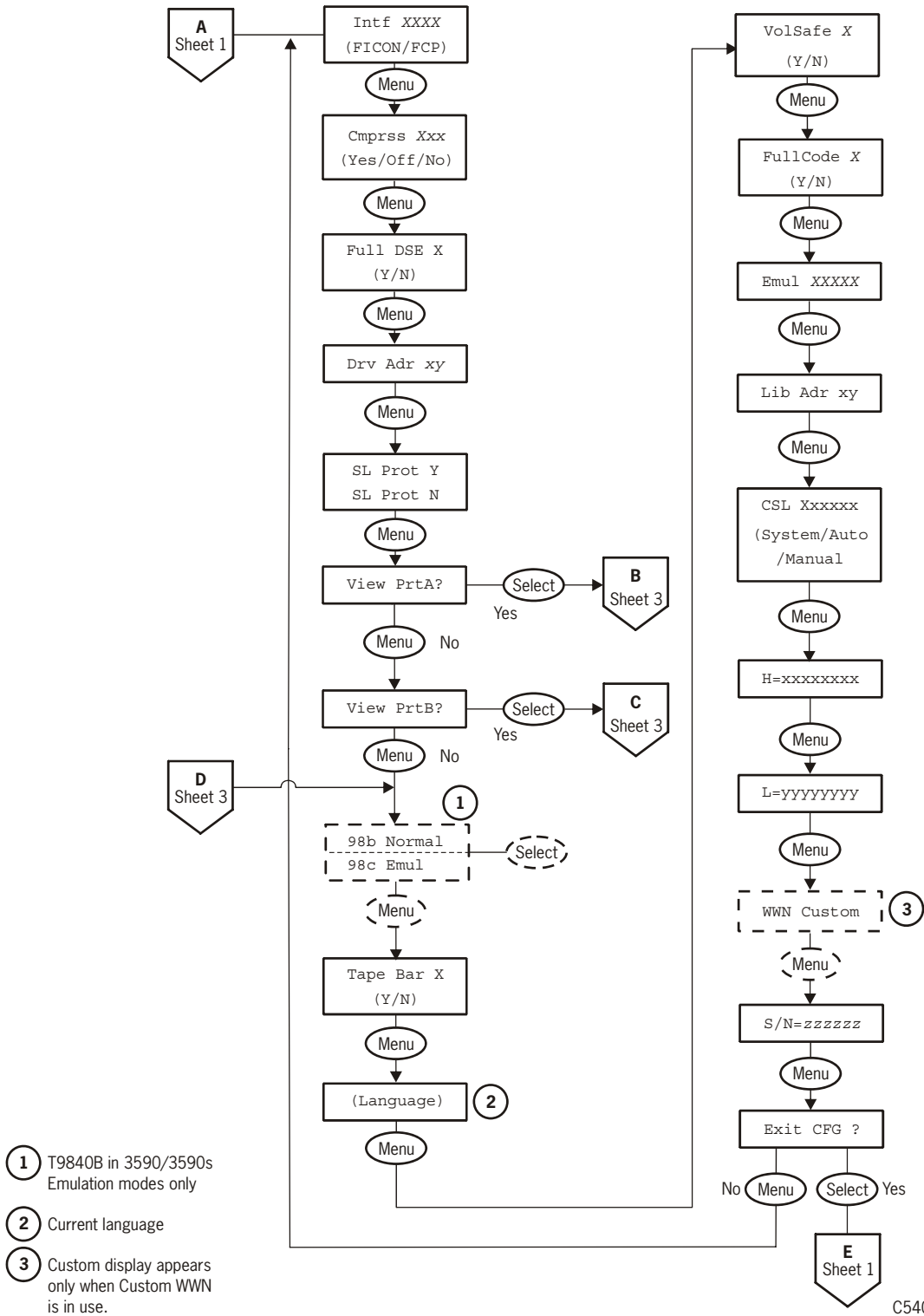
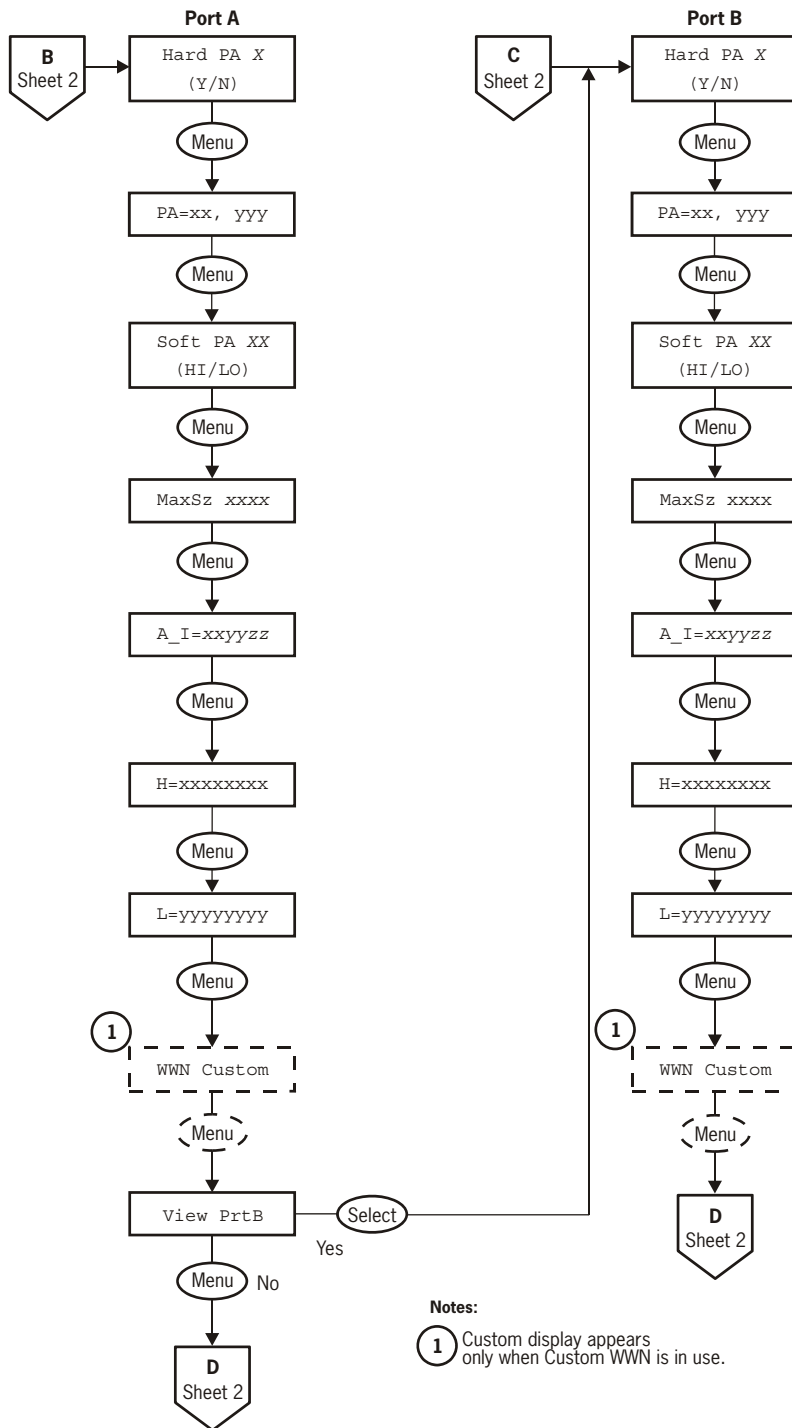


FIGURE 3-11 View FICON Configuration Menu Tree (Part 3 of 3)

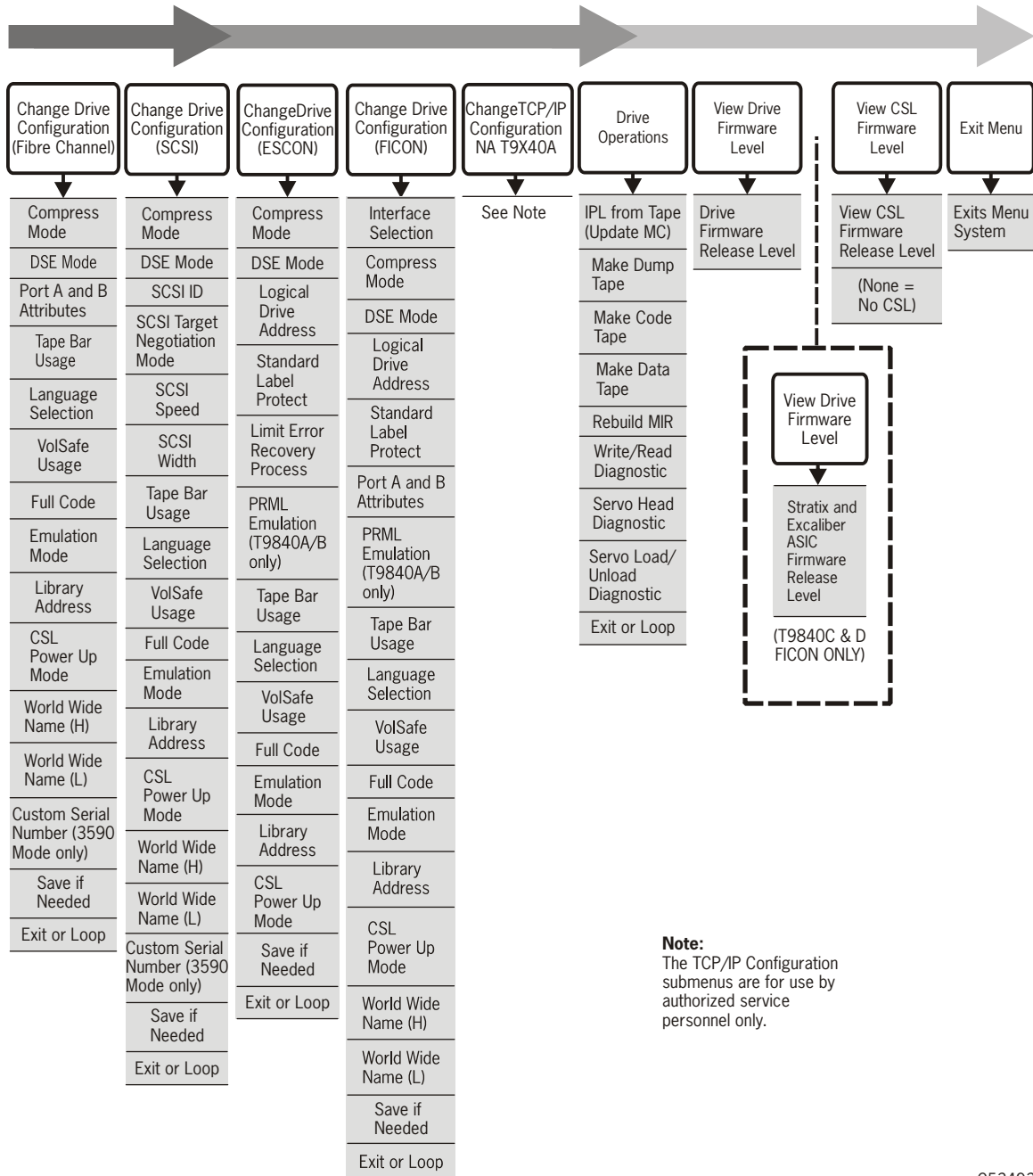


C54020

Offline Menu

With the offline menu, the operator can reformat a data tape cartridge and build the media information region (MIR) on a tape cartridge.,

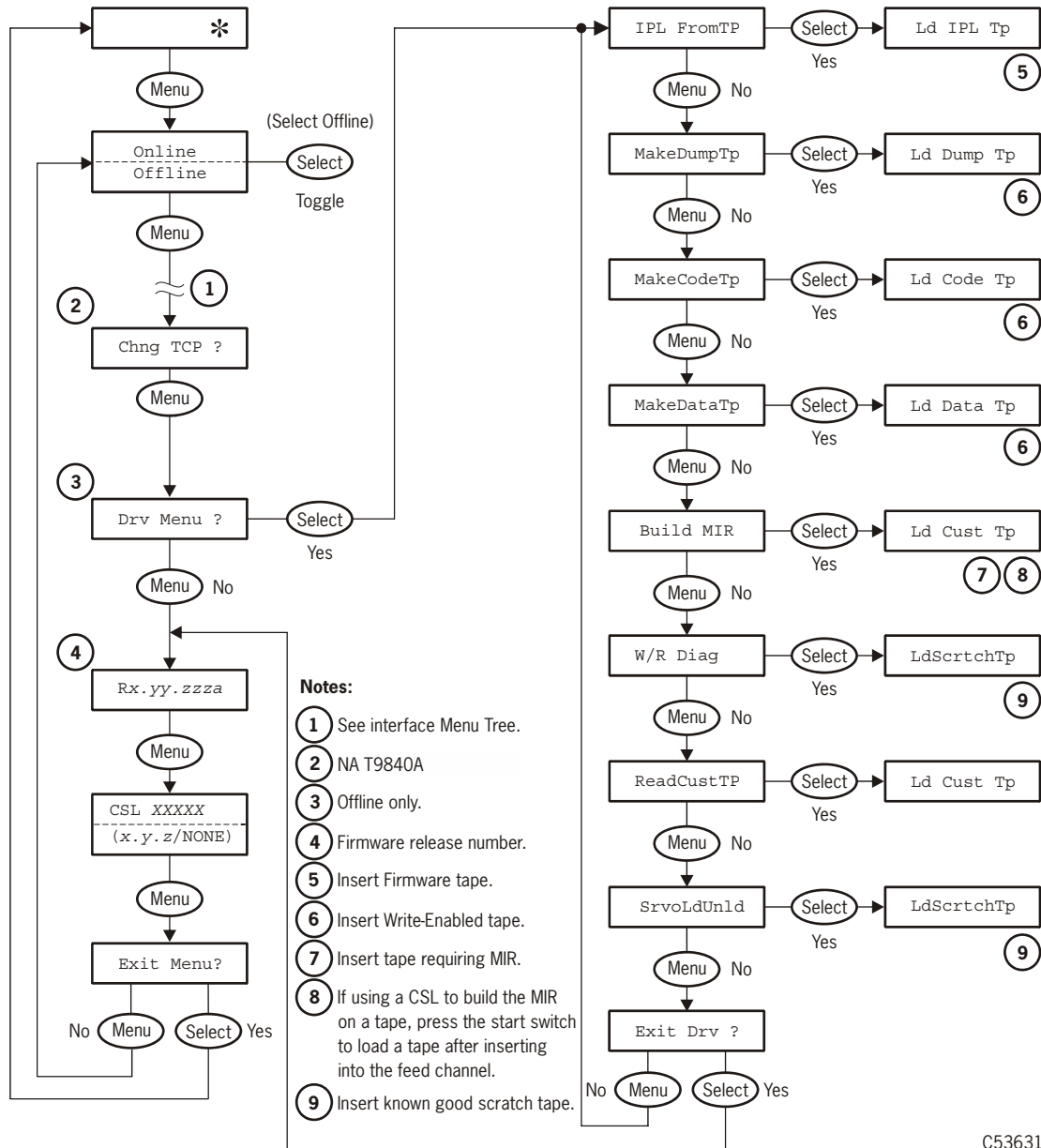
FIGURE 3-12 Offline Menu



C53493

FIGURE 3-13 shows the offline menu tree that features the drive operations sub-menus. This menu branch (Drv Menu ?) is the same for Fibre Channel, SCSI, ESCON, and FICON.

FIGURE 3-13 Drive Operations Menu Tree



C53631

Operator Tasks

This chapter discusses operator tasks primarily for desktop and rack-mounted tape drives. For operator tasks relating to drives within a library, consult library operator guides.

- [Power-on the Drive](#)
- [Power-off the Drive](#)
- [Reset the Drive](#)
- [Place the Drive Offline](#)
- [Place the Drive Online](#)
- [View Drive Configuration](#)
- [View Firmware Release Level](#)
- [Exit the Menu System](#)
- [Write-protect/Enable a Data Cartridge](#)
- [Load a Data Cartridge](#)
- [Unload a Data Cartridge](#)
- [Reformat a Cartridge](#)
- [Build MIR](#)
- [Clean the Drive](#)
- [Cartridge Care](#)

Power-on the Drive

To apply power to the desktop or rack-mount configuration:

1. **Make sure the power cord is connected from the receptacle on the rear panel to an AC power outlet or power strip.**
2. **Make sure that all interface cables are fully seated.**
3. **Set the power switch on the back of the drive or the rear panel to on (I).**

The drive(s) will power-on and perform an initial program load (IPL).

- The power indicator flashes.
- Various messages relative to the IPL sequence appear in the operator panel display window. These messages do not require any action from you.

The drive successfully completes an IPL when:

- The drive power indicator is steady
- An asterisk (*) appears in the operator panel display window

Power-off the Drive

To remove power from the desktop and rack-mount configuration:

1. **Make sure the tape drive is not in use.**

This is done by checking the following:

- a. There are no active jobs, applications, or programs using this drive.
- b. The operator panel activity indicator is steady, and NOT flashing.
- c. The display window does not indicate any activity relative to tape movement, such as reading, writing, or locating.

2. **Make sure a data cartridge is *not loaded* in the tape drive (see [“Unload a Data Cartridge” on page 71](#), as necessary).**
3. **Set the power switch on the rear panel to off (O).**

Reset the Drive

To reset a drive that is already powered on:

1. **Make sure the tape drive is not in use.**

This is done by checking the following:

- a. There are no active jobs, applications, or programs using this drive.
- b. The operator panel activity indicator is steady, and NOT flashing.
- c. The display window does not indicate any activity relative to tape movement, such as reading, writing, or locating.

2. **Make sure a data cartridge is *not* loaded in the tape drive (see [“Unload a Data Cartridge”](#) on page 71, as necessary).**

3. **Press the operator panel IPL switch.**

Once the IPL starts, the following things happen:

- The drive power indicator flashes
- The operator panel display window shows various messages relative to the IPL sequence. These messages do not require any action from you.

When the drive successfully completes an IPL:

- The drive power indicator is steady
- An asterisk (*) displays in the operator panel display window

Note – If there is a dump present, the operator panel display window alternates between the asterisk and the dump message. The dump present indication will stop when a tape cartridge is loaded.

Place the Drive Offline

To change the drive state to offline:

1. **Cease all I/O activity from the host.**

In mainframe environments, this is done by varying the tape drive offline for all host paths to the tape drive by keying in one of the following commands:

- **MVS:** V <address> offline
- **VM:** Vary off, <address>

In open systems environments, this is usually done by either:

- Stopping the job that is using that tape drive
- Or, in a multi-host setting, make sure that any job using that tape drive has been stopped and then, if there is a switch unit in use, blocking the port in that switch to that tape drive.

2. Press the operator panel Menu switch.

Online appears in the display window, indicating the current state of the drive.

3. Press the operator panel Select switch to toggle the drive state.

Offline appears in the display window, indicating a successful transition to the offline state.

4. Press the Menu switch until Exit Menu? appears in the display window.

5. Press either the Select switch to exit the menu system or the Menu switch to repeat the Online/Offline selection.

Note – If you select Exit Menu? the display shows Offline alternating with the normal message as a reminder that the drive is still in the offline state.

Place the Drive Online

To change the tape drive state from offline to online:

1. Press the operator panel Menu switch until the display window shows Offline.

2. Press the operator panel Select switch to toggle the drive state.

Online appears in the display window, indicating the drive state is now online.

3. Press the Menu switch until Exit Menu? appears in the display window.

4. Press the Select switch to exit the menu system.

5. Bring the tape drive back online to the host.

This is accomplished by:

- **Enterprise:** Vary the tape drive online for all host paths to the tape drive by keying in one of the following commands:
 - MVS:** V <address> online
 - VM:** Vary on, <address>
- **Open Systems:** if there is a switch unit installed and the port to this tape drive was blocked, unblock that port.

View Drive Configuration

To view current drive configuration:

1. **Press the operator panel Menu switch to enter the menu system:**
 - If the tape drive's front panel shows *Online*, go to Step 2.
 - If the tape drive's front panel shows *Offline*, press the **Select** switch to toggle the drive state.

Note – It is important that you view configuration settings in the online state, since you cannot accidentally change online settings. To change settings, you must first set the drive to the offline state.

2. **Press the Menu switch until *View CFG ?* appears in the display window.**
3. **Press the operator panel Select switch (Yes) to enter view configuration submenus.**

The operator panel display window shows the first configuration setting.
4. **Press either the Menu or the Select switch to step through the configuration settings.**

Note – In the drive online state, the **Select** switch has the same stepping function as the **Menu** switch, except when answering a displayed question.

5. **Press either the Menu or Select switch until *Exit CFG ?* appears in the display window .**
6. **Press either the Select switch (Yes) to exit the configuration submenus, or the Menu switch (No) to repeat the view configuration sequence.**
7. **Press the Menu switch until *Exit Menu?* appears in the display window.**
8. **Press either the Select switch (Yes) to exit the menu system, or the Menu switch (No) to return to the online/offline selection menu.**

View Firmware Release Level

To view the firmware release level:

1. **Press the Menu switch to enter the menu system.**
2. **Press the Menu switch until the display shows a number in the format Rx.yy.zzzc.**

Where:

x is the major revision level

yy is the minor revision level

zzz is the integration level

c is the channel type:

f is Fibre Channel

s is SCSI

e is ESCON/FICON (3490 image)

m is ESCON/FICON (3590 image)

3. **Press the Menu switch repeatedly until Exit Menu? appears in the display window.**
4. **Press either the Select switch to exit the menu system or press the Menu switch to repeat the Online/Offline selection.**

Exit the Menu System

To exit the menu system:

1. **Press the Menu switch repeatedly until Exit Menu? appears in the display window.**
2. **Press the Menu switch to determine the current drive state (Offline or Online appears in the display).**
3. **If the present state is Offline, press the Select switch (Online appears in the display)**
4. **Press the Menu switch repeatedly until Exit Menu? appears in the display.**
5. **Press the Select switch (an * or Online appears in the display).**

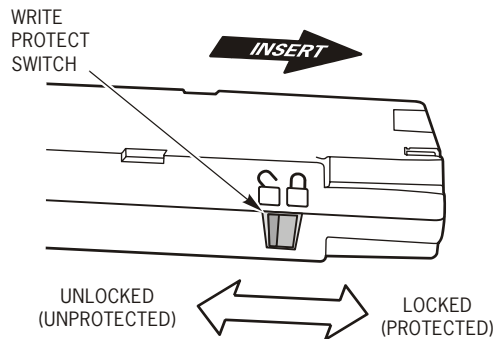
Write-protect/Enable a Data Cartridge

To write-protect or write-enable a data cartridge, move the write-protect switch on the cartridge to the desired setting.

The write-protect switch is on the side of the cartridge as shown in [FIGURE 4-1](#). A pointer on the switch points to padlock symbols on the case that indicate the following status:

Locked	Write protected. Data can only be read from the data cartridge.
Unlocked	Write enabled (unprotected). Data can be read from and written to the standard data cartridge. With a VolSafe cartridge, data can be read from the cartridge; and, data can be appended if the drive VolSafe configuration selection is set to Yes.

FIGURE 4-1 T9840 Data Cartridge Write Protect Switch



C53995

Load a Data Cartridge

To load a cartridge into a T9840 tape drive, do the following:

Note – A T9840 tape drive accepts only T9840 cartridges.

1. **Inspect the cartridge for damage** (see [“Identify a Damaged Cartridge” on page 74](#)).
2. **Look into the drive load/unload slot to make sure there are no obstructions.**

Note – For scratch data cartridges and other data cartridges on which the tape is written, make sure the write protect switch on the data cartridge is in the unlocked position.

3. **Hold the cartridge by the finger grips, and with the hub side down, carefully insert the cartridge into the tape drive loading slot.**
4. **Push the cartridge into the slot**

Note – For desktop or rack-mounted tape drives, when a cartridge is loaded, the operator panel display window indicates one of the values in the following table.

Display	Meaning
Ready U	The cartridge is ready and not file protected (the drive can read, write, or append data).
Ready F	The cartridge is ready and file protected, a VolSafe cartridge is loaded by the drive VolSafe option is disabled, or a low-density cartridge is loaded in the drive.
Ready A	The VolSafe cartridge with the proper density is ready.
Ready H	The data cartridge density is higher than the drive is capable of reading or writing.
Ready L	The data cartridge is loaded into a drive that is capable of writing at a higher density - the drive can read a lower density cartridge, but cannot append data.
LOAD xxxx	The cartridge load was not successful.

Unload a Data Cartridge

Use the following procedure to remove cartridges from the drive.

Caution – Possible data corruption: Do not push the Unload switch while a data cartridge is in use. Doing so could cause the tape drive to stop writing and result in corrupted data on the tape.

Use the following procedure to remove cartridges from the drive.

1. Make sure the tape drive is not in use.

This is done by checking the following:

- a. There are no active jobs, applications, or programs using this drive.
- b. The operator panel activity indicator is steady, and NOT flashing.
- c. The display window does not indicate any activity relative to tape movement, such as reading, writing, or locating.

2. Press the operator panel Unload switch.

The display should show an asterisk (*) when the cartridge is unloaded.

Note – If the drive is offline, the asterisk will alternate with `Offline`.

3. Grasp the cartridge by the finger grips and extract it from the load/unload slot.

Reformat a Cartridge

A data cartridge can be reformatted for new data recording using the offline drive operations menu. Once a data cartridge is reformatted, old data is no longer accessible because the reformatting and new data recording overwrites previous data areas.

Note – A VolSafe data cartridge cannot be reformatted by the offline drive operations submenu.

To reformat a cartridge:

1. **Press the Menu switch to access the menu system.**
 - a. **If the display shows `Offline`, go to step 2.**
 - b. **If the display shows `Online`, press the Select switch to place the drive offline.**
2. **Press the Menu switch until `Drv Menu ?` appears in the display.**
3. **Press the Select switch to enter the submenu.**
4. **Press the Menu switch until `MakeDataTp` appears in the display.**

5. Press the Select switch (Ld Data Tp appears in the display).
6. Inspect the cartridge for damage (see [“Identify a Damaged Cartridge”](#) on page 74).
7. Load a write-enabled data cartridge in the drive load slot.
The drive reformats and ejects the data cartridge.
8. Remove the cartridge.
9. Press the Menu switch until Exit Drv ? appears in the display.
10. Press either the Select switch to exit or the Menu switch to repeat the drive operations menu.
11. Press the Menu switch until Exit Menu? appears in the display
12. Press either the Select switch to exit the menu system or the Menu switch to repeat the Online/Offline selection.

Build MIR

This process rebuilds an MIR from the operator panel.

1. Set the drive to the offline state.
2. Press the Menu switch until Drv Menu? appears in the display window.
3. Press the Select switch (Yes) once.
The first drive utilities submenu appears in the display window.
4. Press the Menu switch until Build MIR appears.
5. Press the Select switch to begin the MIR rebuilding process.
Ld Cust Tp appears in the display window.

Note – Any loaded cartridge unloads at this time. If present, remove any unloaded cartridge.

6. Inspect the cartridge for damage (see [“Identify a Damaged Cartridge”](#) on page 74).
7. Insert a write-enabled cartridge with a defective MIR.

Note – Rebuilding an MIR could take up to 40 minutes for a full data cartridge. When the rebuild is complete, the cartridge unloads.

8. Remove the cartridge from the drive load/unload slot.
If there are other cartridges for MIR rebuilding, repeat Step 6 and Step 7 for each cartridge. When all cartridges with defective MIRs have been rebuilt, continue with Step 8.
9. Press the Menu switch once.
Exit Drv? appears in the display window.

10. Press either the Select switch (Yes) to exit the drive utilities submenus or the Menu switch (No) to repeat the utilities submenu sequence.
11. Return the drive to an online state
 - a. Press the Menu switch until Exit Menu? appears
 - b. Press the Menu switch to access the first submenu (Offline)
 - c. Press the Select switch (Online appears in the display)
 - d. Press the Menu switch until Exit Menu? appears
 - e. Press the Select switch (an * or Online appears in the display)

Clean the Drive

After the tape drive transports a predetermined length of tape or records a predetermined number of errors, the Clean indicator lights. It is time to clean the tape drive.

Caution – Equipment damage: Do not wet-clean the tape drive. Do not clean the tape drive unless the Clean indicator lights.

To clean the tape drive:

1. Make sure the tape drive is not in use. If there is a tape loaded in the tape drive, make sure the application or job that was using that tape drive is no longer running before proceeding to Step 2.
2. Unload any data cartridge in the tape drive.
3. Insert a cleaning cartridge in the tape drive.

Once loaded, the *activity* light flashes. When the *activity* and *clean* indicators turn off, cleaning is complete and the tape drive unloads the cleaning cartridge.

Note – The tape drive might immediately eject the cleaning cartridge and show the message Exp ClCart in the front panel display. This indicates that the cleaning cartridge has been used its maximum number of cleaning cycles. Discard the worn cleaning cartridge and insert a new cleaning cartridge into the tape drive. The cleaning cartridge can be used about 100 times before you must discard it.

If the tape drive's front panel displays CHK xxxx, where xxxx is the FSC, a cleaning cartridge failure occurred. Try the procedure again with a different cleaning cartridge. If the problem persists, contact your service representative.

4. Remove the cleaning cartridge from the tape drive.

Cartridge Care

9840 cartridges require care to ensure proper operation and longevity.

Handling

Caution – Tape cartridge damage or data loss: Handle tape cartridges properly.

Follow these guidelines to handle tape cartridges properly:

- Never open a data cartridge or touch the tape.
- Never carry data cartridges loosely in a container.
- Never expose the tape or cartridges to direct sunlight or moisture.
- Never expose a recorded data cartridge to magnetic fields.
- Always maintain a clean operating, working, and storage environment.

Storing

Always store tape cartridges in an environment with the specified range of temperature and humidity found in [“Tape Cartridge” on page 89](#). When storing tape cartridges, follow these recommendations:

- Never take data cartridges out of their protective wrapping until they are needed. Always use the tear string, not a sharp instrument, to remove the wrapping.
- Store data cartridges in a dirt-free environment that, if possible, duplicates the conditions of the data processing center.
- Before using data cartridges that have been in tape storage, *acclimate* the cartridges to the operating environment for at least 24 hours.

Identify a Damaged Cartridge

Caution – Equipment damage: Do not load a damaged cartridge.

Before loading a cartridge into a drive, look for the following problems:

- A cracked or broken case
- A dirty case (see [“Cleaning” on page 75](#))
- A missing or broken access door
- A damaged file-protect switch
- Liquid in the cartridge
- A loose label (replace or remove the label)
- Any other obvious damage

Cleaning

Wipe all dust, dirt, and moisture from the cartridge case with a lint-free cloth.

Shipping

Caution – Data cartridge damage: Ship data cartridges properly.

If you must ship tape cartridges, especially if they are for remote system backup, remote database duplication, or disaster recovery, follow these guidelines:

- Save the original factory packaging. Use it, or the equivalent, to package tape cartridges.
- Wrap the tape cartridges in plastic to block moisture and contamination from entering the tape cartridges.
- Pad the tape cartridges on all sides.
- Fill voids in the packaging with padding equivalent to the original padding, if you are using factory packaging to ship fewer tape cartridges than the packaging originally held, or if you are using other packaging.
- Label the outside of the shipping carton clearly with text or accepted symbols that indicate:
 - Do not expose to magnetic fields
 - Do not expose to moisture
 - This end up
 - Fragile

Indicators and Messages

This chapter summarizes the operator panel indicator lights and display messages.

Indicators

TABLE 5-1 shows the meaning of the indicators located on the front panel and the recommended action.

TABLE 5-1 Operator Panel Indicators

Indicators				Meaning	Recommended Action
power	activity	clean	service		
Off				The drive is powered off.	Power on the drive as required.
Flashing			Off	The drive is in initial program load (IPL).	None.
Persistent Flashing			Off	The drive failed IPL and cannot exit the sequence.	Power the drive off and on again. If the problem persists, contact authorized service personnel.
On			Off	Normal operation.	None.
On	Off			No tape cartridge is loaded.	Load a tape cartridge as needed.
On	On			A tape cartridge is loaded.	None.
On	Flashing			The tape is moving.	None.
On		Off		No cleaning is required.	None.
On		On		Cleaning is required.	Load the appropriate cleaning cartridge in the drive.

TABLE 5-1 Operator Panel Indicators (Continued)

Indicators				Meaning	Recommended Action
power	activity	clean	service		
On	Flashing	On		Cleaning is proceeding.	None.
On			On	A drive error occurred.	Perform an IPL on the drive. If the problem persists, contact authorized service personnel.
On			Flashing	An error occurred and dump data was collected.	Observe the display message. See x for more information about the message.

Messages

[TABLE 5-2](#) lists operator panel display messages, meanings, and recommended actions.

TABLE 5-2 Operator Panel Display Messages

Display	Meaning	Recommended Action
* (asterisk)	The tape drive is online but a cartridge tape is not loaded.	Load a cartridge tape as required.
ASIA Diags	IPL diagnostics are running.	None
Bank n Bad	During boot, a section of memory was found bad.	IPL the tape drive. If the problem persists, contact authorized service personnel.
BldMIRFail	Rebuild of Media Information Region (MIR) unsuccessful. Note: Code level 1.30.109 and higher displays CHK XXXX.	
Boot Fail	The IPL failed.	IPL the tape drive again. If the problem persists, contact authorized service personnel.
BT Monitor	A sequence of switches accessed an engineering area.	IPL the tape drive.
CC Diags	IPL diagnostics are running.	None
CHK xxxx, where xxxx is an FSC	An operational failure occurred; the tape drive might automatically perform an IPL depending on the operational mode of the drive and the specific failure.	Wait for the IPL to complete and retry the operation. If the problem persists, contact authorized service personnel. See TABLE 5-3 on page 82 for a list of codes that are most often caused by an operator error.
Cleaning (*Cleaning*)	A cleaning cartridge is in the tape drive and is now cleaning.	None

TABLE 5-2 Operator Panel Display Messages (Continued)

Display	Meaning	Recommended Action
<i>cnhdnsn</i> (Hardware revision level supported by the firmware in this drive)	The tape drive firmware level is insufficient to control the tape drive hardware.	Contact authorized service personnel.
CodCrFail1	The tape drive cannot write code onto the data cartridge tape, or the tape drive cannot position the data cartridge tape.	Ensure that the tape is write-enabled, or try another cartridge tape.
CodCrFail2	The tape drive cannot read code from the data cartridge tape.	Retry the operation, or try another cartridge tape. If the problem persists, contact authorized service personnel.
CodeUpdate	The firmware in the tape drive is being updated from the host; the operator panel switches are locked.	None
CodUpFail1	The tape drive cannot read the data cartridge tape, or the tape drive cannot position the data cartridge tape.	Try another cartridge tape.
CodUpFail2	The EEPROM failed.	Contact authorized service personnel.
CodUpFail3	The tape drive cannot read code from the data cartridge tape.	Retry the operation, or try another cartridge tape. If the problem persists, contact authorized service personnel.
CodUpFail4	The data cartridge tape is not a code update cartridge tape.	Try another code update cartridge tape. If the problem persists, contact authorized service personnel.
DatCrFail1	The tape drive cannot create (reformat or reclaim) a cartridge tape.	Ensure that the data cartridge tape is write-enabled, or try to reformat the tape on another drive. If the problem persists, contact authorized service personnel.
DmpCrFail1	The tape drive cannot create (reformat or reclaim) a diagnostic dump tape.	Ensure that the data cartridge tape is write-enabled. If the problem persists, contact authorized service personnel.
DmpCrFail2	The tape drive cannot read the format of the data cartridge tape.	Retry the operation, or try another cartridge tape. If the problem persists, contact authorized service personnel.
DmpWrFail1	The tape drive cannot write diagnostic data onto the data cartridge tape, or the tape drive cannot position the data cartridge tape.	Contact authorized service personnel.
DmpWrFail2	There is no diagnostic dump data to process.	Contact authorized service personnel.
<i>xxxx:Dmp y</i>	Alternates with * (an asterisk) after completion of IPL, where <i>xxxx</i> =the FSC of last dump data collected and <i>Y</i> = number of uncollected dumps in non-volatile memory.	Contact authorized service personnel who accesses the diagnostic data and collects it to tape or to the host.

TABLE 5-2 Operator Panel Display Messages (Continued)

Display	Meaning	Recommended Action
DumpAgain? alternating with CHK xxxx, where xxxx is an FSC.	The tape drive detected the same error within a minute. Note: The Service indicator is flashing.	IPL the tape drive. If the problem persists, contact authorized service personnel.
DumpToHost	The dump or event log is being transferred to the host; operator panel switches are locked.	None
Exp ClCart	The cleaning cartridge is used up.	Replace the cleaning cartridge.
Fix CfgErr	The checksum does not match after an IPL.	Contact authorized service personnel.
Init xxxx. where xxxx is an FSC	An initialization error occurred.	Contact authorized service personnel.
IPL Pend	The IPL switch has been pressed.	None
LOAD CC	The common controller code is loading; IPL is proceeding.	None
LOAD ESCON	ESCON firmware is loading; IPL is proceeding.	None
LOAD FIBRE	Fibre Channel firmware is loading; IPL is proceeding.	None
LOAD FICON	FICON firmware is loading; IPL is proceeding.	None
LOAD SERVO	The servo code is loading; IPL is proceeding.	None
LOAD SCSI	SCSI firmware is loading; IPL is proceeding.	None
LOAD xxxx, where xxxx is an FSC	The load or unload operation failed.	If the load failed, insert another cartridge tape. If it loads successfully, suspect the original tape. If another tape fails to load, IPL the tape drive. If the problem persists, contact your Sun service representative.
Loading	A cartridge tape is loading.	None
Locating	The tape drive is doing a high-speed seek.	None
Memory Err	The IPL failed.	IPL the tape drive again. If the problem persists, contact authorized service personnel.
NTReady A	A write-enabled VolSafe data cartridge is in the process of a manual unload.	None
NTReady F	A write-protected tape is in the process of a manual unload.	None
NTReady U	A write-enabled tape is in the process of a manual unload.	None
Offline, alternating with *	The tape drive is offline.	Perform offline menu operations or exit the menu system.

TABLE 5-2 Operator Panel Display Messages (Continued)

Display	Meaning	Recommended Action
Online	The tape drive is online.	None
OnLn Pend	The online state is pending completion of IPL diagnostics.	None
Power Fail	The power supply failed.	Contact authorized service personnel.
Reading	The tape drive is reading data.	None
Ready A	The loaded cartridge tape is a VolSafe cartridge.	None
Ready F	The loaded cartridge tape is write-protected.	None
Ready H	A loaded high-density data cartridge is write-enabled by the cartridge write-protect switch in the unlocked position.	Reload with low-density cartridge or intentionally over-write from BOT. Note: High-density data cannot be read by a T9840A/B drive.
Ready L	A loaded low-density data cartridge is write-enabled by the cartridge write-protect switch in the unlocked position.	Use for read-only jobs or intentionally over-write from BOT. Note: Low-density data files can be read, but not revised by a T9840C/D drive.
Ready U	The loaded cartridge tape is write-enabled (write-unprotected).	None
Rewinding	The tape drive is rewinding.	None
Save Fails	The new configuration cannot be saved because the read-access memory (RAM) may be defective.	This message is associated with changing the tape drive configuration, a task for authorized service personnel only.
SavingDump	A dump is being saved to non-volatile memory.	None
Start Init	Initialization has started.	None
Trapped	The IPL process is trapped in a loop.	IPL the tape drive again. If the problem persists, contact authorized service personnel.
Unloading	A cartridge tape is unloading.	None
UnWr xxxx, where xxxx is an FSC	The Unload switch was pressed during a write operation. Some data remains unwritten.	To write the unwritten data, issue the command: ESCON Swap in VM/MVS environment Or, Press the Unload switch again; the unwritten data is lost.
Write Prot	The tape drive attempted to write to a write-protected cartridge tape.	Change the switch on the data cartridge tape to enable writing.
Writing	The tape drive is writing data.	None

Potential Operator Recovery Scenarios

The following table contains Fault Symptom Codes (FSCs) that commonly result from an operator error. The first column in the table lists an operator panel message at the time of the error event. The description column provides insight into the error condition from which you should be able to determine a recovery action.

TABLE 5-3 Selected Check Message Meanings

Message	Description
CHK 6109	This drive does not contain the key needed to decrypt this tape. The ID of the missing key can be viewed from this drive using the VOP program. The ID has also been written to the Operational Key Token (OKT). Connect the OKT to the Key Management Station (KMS) and view the error log for error 6109
CHK A33A	The user requested a motion operation that requires a tape to be installed, however, a tape has not been loaded.
CHK A34C	The user requested a write operation that requires a tape to be installed, however, a tape has not been loaded.
CHK A3FB	A format override tape write operation failed. The failure may not be serious. Error recovery was not invoked for the failure. Re-attempting the test may resolve this issue.
CHK A733	The operator or library inserted a write protected tape into the drive while in a menu selected create tape mode. If the write protect switch on the cartridge is moved to the unlocked position, operation will work.
CHK A749	A non-288 track tape was attempted to be read on a drive only capable of reading 288 track tapes. Retry with a 288 track tape.
CHK A74E	A PRML tape was loaded on a non-PRML drive, or a non-PRML tape was loaded on a PRML drive. In either case, the drive cannot write to the tape. The MIR cannot be written on the tape during the unload process so there is no point in running the build MIR function. If this is a PRML tape, rebuild the MIR on a PRML drive. If it is a non-PRML tape, rebuild the MIR on a non-PRML drive.

Translated Messages

TABLE 5-4 lists operator panel display messages that are translated when the drive configuration Language option is set to something other than English.

TABLE 5-4 Translated Display Messages

English	Espanol	Francais	Italiano	Deutsch
CLEANING	*LIMPIEZA*	*NETTOYAGE	*PULIZIA*	*REINIGEN*
CHK XXXX	ERR XXXX	ERR XXXX	ERR XXXX	PRUEF XXXX
ERASING	*BORRANDO*	EFFACEMENT	*CANCELLA*	*LOESCHEN*
Locating	Localizar	Recherche	Ricerca	Suchen
LOAD XXXX	CARGA XXXX	CHARG XXXX	CARIC XXXX	LADEN XXXX
Loading	Cargando	Chargement	Carico	Laden
NT Ready A	No Listo A	NPret A	No Prnt A	N Bereit A
NT Ready F	No Listo F	NPret F	No Prnt F	N Bereit F
NT Ready U	No Listo U	NPret U	No Prnt U	N Bereit U
Overtemp	*Caliente*	*Overtemp*	*Temperat*	* Heiss *
Processing	Procesar	Traitement	Processo	Verarbeitn
Reading	Leer	Lecture	Lettura	Lesen
Ready A	Listo A	Pret A	Pronto A	Bereit A
Ready F	Listo F	Pret F	Pronto F	Bereit F
Ready H	Listo H	Pret H	Pronto H	Bereit H
Ready L	Listo L	Pret L	Pronto L	Bereit L
Ready U	Listo U	Pret U	Pronto U	Bereit U
Rewinding	Rebobinar	Rebobinage	Riavvolgi	Spulen
Unloading	Descarga	Dechargemt	Scarico	Entladen
Writing	Excritura	Ecriture	Scrittura	Schreiben

Messages

Specifications

This appendix lists the physical, power, and performance specifications for the T9840 tape drive plus the environmental requirements for the drive and data cartridges.

Physical Specifications

This section lists the physical specifications for T9840 tape drives in three configurations: desktop, rack mount, and library attached.

Tape Drive Only

[TABLE A-1](#) lists the T9840 tape drive physical specifications.

TABLE A-1 T9840 Tape Drive Physical Specifications

Measurement	Specification
Width	146 mm (5.75 in.)
Depth	381 mm (15 in.)
Height	82.5 mm (3.25 in.)

Desktop Configuration

The T9840 desktop configuration is a single enclosed assembly.

Manual-load drive:

- 230 mm (9.1 in.) wide
- 160 mm (6.5 in.) high
- 483 mm (19 in.) deep plus 76 mm (3 in.) for cables
- 9.3 kg (20.5 lb)

Cartridge Scratch Loader (T9840A only):

- 483 mm (19 in.) wide
- 197 mm (7.7 in.) high
- 630 mm (24.8 in.) deep plus 76 mm (3 in.) for cables
- 23 kg (50 lb)

Rack-Mount Configuration

[TABLE A-2](#) lists the physical specifications for the T9840 rack-mount configuration.

TABLE A-2 T9840 Tape Drive Rack-mount Physical Specifications

Characteristic	Value
Chassis dimensions	483 mm (19 in.) wide 177 mm (7.0 in.) high 630 mm (24.8 in.) deep plus 76 mm (3 in.) for cables
Weight:	
single drive	14.1 kg (32 lb)
dual drive	20.4 kg (45 lb)
Cartridge Scratch Loader	18 kg (39 lb)

Library-attached Configuration

The T9840 Tape Drive library-attached configuration trays fit inside the:

- StorageTek L180/L700/L1400 libraries
- StorageTek SL8500 Modular Library System
- 9741 drive cabinet that attaches to StorageTek 9310 and 9740 libraries
- 9741E drive cabinet that attaches to StorageTek 9310, 9740, and L5500 libraries

Refer to the appropriate library System Assurance Guide for the physical dimensions and weights of the library and frame.

[TABLE A-3](#) lists the weights of the library tape drives and accessories (including trays, power supplies, and cables).

TABLE A-3 T9840 Tape Drive Weights (Library-attached)

Library	Drive and Accessory Weights
9310/9740/L5500	7.30 kg (16.1 lb)
L180/L700/L1400	7.39 kg (16.3 lb)
SL8500	8.85 kg (19.5 lb)

Power Specifications

The power specifications for the T9840 tape drive are listed in the following table.

TABLE A-4 T9840 Tape Drive Power Specifications

Characteristic	Value								
Input voltage	100 to 240 VAC								
Input frequency	50 to 60 Hz								
Power consumption	<table border="0"> <tr> <td>T9840D</td> <td>T9840C</td> </tr> <tr> <td>■ 61.7 W - write</td> <td>■ 65 W - write</td> </tr> <tr> <td>■ 43 W - Idle with tape loaded</td> <td>■ 45 W - Idle with tape loaded</td> </tr> <tr> <td>■ 35 W - Idle no tape loaded</td> <td>■ 38 W - Idle no tape loaded</td> </tr> </table>	T9840D	T9840C	■ 61.7 W - write	■ 65 W - write	■ 43 W - Idle with tape loaded	■ 45 W - Idle with tape loaded	■ 35 W - Idle no tape loaded	■ 38 W - Idle no tape loaded
T9840D	T9840C								
■ 61.7 W - write	■ 65 W - write								
■ 43 W - Idle with tape loaded	■ 45 W - Idle with tape loaded								
■ 35 W - Idle no tape loaded	■ 38 W - Idle no tape loaded								
SL8500 Power dissipation	345 Btu/hr								

Environmental Requirements

This section lists the environmental requirements for the tape drive, power supply, and tape cartridge.

Tape Drive and Power Supply

This section lists the environmental requirements for the tape drive and the power supply.

TABLE A-5 T9840 Tape Drive and Power Supply Environmental Requirements

Description	Range
Temperature	
Operating	15° to 32°C (59° to 90°F)
Shipping	-40° to 60°C (-40° to 140°F)
Storing	10° to 40°C (50° to 104°F)
Relative Humidity, (non-condensing)	
Operating	20% to 80%
Shipping	10% to 95%
Storing	10% to 95%
Wet Bulb Maximum	
Operating	29°C (84°F)
Shipping	35°C (95°F)
Storing	35°C (95°F)
Altitude	
Operating	26°C (79°F)
Shipping	26°C (79°F)
Storing	26°C (79°F)
Air Flow Requirement (Operating Heat Output)	
Drive and power supply operating	73.2 Calories/hr (290.2 Btu/hr)

Tape Cartridge

TABLE A-6 lists the T9840 tape cartridge environmental requirements.

TABLE A-6 T9840 Tape Cartridge Environmental Requirements

Temperature	
Operating ¹	15° to 32°C (59° to 90°F)
Storage (up to four weeks)	5° to 32°C (41° to 90°F)
Storage (archival)	18° to 26°C (65° to 79°F)
Shipping (unrecorded) ²	-23° to 49°C (-10° to 120°F)
Shipping (recorded) ²	4° to 40°C (40° to 104°F)
Relative Humidity, Non-condensing	
Operating ¹	20% to 80%
Storage (up to four weeks)	5% to 80%
Storage (archival)	40% to 60%
Shipping (unrecorded) ²	5% to 80%
Shipping (recorded) ²	5% to 80%
Wet Bulb Maximum	
Operating ¹	26°C (79°F)
Storage (nonarchive)	26°C (79°F)
Storage (archival)	26°C (79°F)
Shipping (unrecorded) ²	26°C (79°F)
Shipping (recorded) ²	26°C (79°F)

1. The acclimation time before use is 24 hours.

2. The shipping environment must not exceed the limit of the storage environment, archive or nonarchive, for longer than 10 days.



Performance Specifications

This section describes the T9840 Tape Drive and Tape Cartridge performance.

Tape Drive

TABLE A-7 lists the performance specifications of the T9840 tape drive.

TABLE A-7 T9840 Tape Drive Performance Specifications

Characteristics	Values			
	T9840A	T9840B	T9840C	T9840D
Capacity and Performance				
Capacity, native	20 GB	20 GB	40 GB ¹	75 GB ¹
Data buffer size	8 MB	32 MB	64 MB 	64 MB 
tape speed, read/write	2 m/s	4 m/s	3.295 m/s	3.4 m/s
Performance, native (head-to-tape)				
uncompressed	10 MB/s	19 MB/s	30 MB/s	30 MB/s
compressed (maximum)	35 MB/s	60 MB/s	60 MB/s	60 MB/s ²
Burst (FC & FICON)	100 MB/s	200 MB/s	200 MB/s	200 MB/s
Burst (ESCON)	17 MB/s	17 MB/s	17 MB/s	17 MB/s
Interface data				
Fibre Channel	1 Gb	2 Gb	2 Gb	2 Gb
Ultra SCSI (HVD)	40 MB/s	40 MB/s	N/A	N/A
ESCON	17 MB/s	17 MB/s	17 MB/s	17 MB/s
FICON	N/A	2 Gb	2 Gb	2 Gb
Access times				
Tape load and thread to ready	7 sec	7 sec	6.5 sec	8.5 sec
File access, first (average)	8 sec	8 sec	8 sec	8 sec
Rewind (maximum/average)	16/8 sec	16/8 sec	16/8 sec	16/8 sec
Unload	8 sec	8 sec	11.5 sec	12.5 sec
Reliability				
Mean time between failure (MTBF)				
Power on @ 100% duty cycle	290,000 hr	290,000 hr	290,000 hr	290,000 hr
Tape load @ 10/day (100k loads)	240,000 hr	240,000 hr	240,000 hr	240,000 hr
Tape path motion (TPM) @ 70% duty cycle	216,000 hr	216,000 hr	216,000 hr	216,000 hr
Head life @ 70% TPM duty cycle	5 years	5 years	5 years	5 years
Uncorrected bit error rate	1 x 10 ⁻¹⁸	1 x 10 ⁻¹⁸	1 x 10 ⁻¹⁸	1 x 10 ⁻¹⁸
Undetected bit error rate	1 x 10 ⁻³³	1 x 10 ⁻³³	1 x 10 ⁻³³	1 x 10 ⁻³³

1. VR² is a trademark of Overland Storage.


VR² technology is used to achieve T9840C and T9840D capacity.

2. Fibre Channel (FC) write and 55 MB/s FICON write

Tape Cartridge

TABLE A-8 lists the physical and performance specifications for the T9840 data cartridge. The cleaning cartridges have the same physical specifications.

TABLE A-8 T9840 Data Cartridge Physical and Performance Specifications

Characteristic	Value
Cartridge physical data	
Drive compatibility	T9840A, T9840B, T9840C, T9840D
Form factor	1/2 in. cartridge, 3490/3490E
Width	10.9 cm (4.29 in.)
Length	12.5 cm (4.92 in.)
Height	2.54 cm (1.0 in.)
Weight	262 g (9.17 oz)
Drop strength	1.0 m (39.4 in.)
Tape media data	
Capacity, native (uncompressed)	20 GB (T9840A, T9840B) 40 GB ¹ (T9840C)
	
	75 GB ¹ (T9840D)
Tracks	288 (T9840A, T9840B, T9840C) 576 (T9840D)
Track following servo	Factory pre-recorded
Formulation	Advanced metal particle (AMP)
Physical thickness	9 microns
Physical length	271 m (889 ft)
Recordable length (including MIR)	251 m (823 ft)
Reliability	
Archival life	15-30 years
Short-length durability	80,000 write/read passes minimum
Long-life durability	6,500 write/read passes minimum
Load/unloads	10,000 minimum
Uncorrected bit error rate	1×10^{-18}
Permanent errors	Zero
1. VR ² is a trademark of Overland Storage. VR ² technology is used to achieve T9840C and T9840D capacity.	

Glossary

This glossary defines terms and abbreviations in this publication.

Some of the definitions are taken from other glossaries. The letters in the parentheses that follow some definitions indicate the source of the definition:

(A) *The American National Standard Dictionary for Information Systems*, ANSI X3.172-1990, copyright 1990 by the American National Standards Institute (ANSI).

(E) The ANSI/Electronic Industries Association (EIA) Standard-440-A, *Fiber Optic Terminology*.

(I) *The Information Technology Vocabulary*, developed by Subcommittee 1, Joint Technical Committee 1, of the International Organization for Standardization and International Electro-technical Commission (ISO/IEC/JTC1/SC1).

(IBM) *The IBM Dictionary of Computing*, copyright 1994 by IBM.

(T) Draft international standards committee drafts, and working papers being developed by the ISO/IEC/JTC1/SC1.

A

access time The time interval between the instant at which a call for data is initialized and the instant at which the delivery of data is completed. (T)

address A character or group of characters that identifies a register, a particular part of storage, or some other data source or destination. (A)

alphanumeric A character or group of characters that identifies a register, a particular part of storage, or some other data source or destination. (A)

B

beginning-of-tape (BOT) The location on a tape where written data begins.

- block** A collection of contiguous records recorded as a unit. Interblock gaps separate blocks, and each block can contain one or more records.
- buffer** A routine or storage that compensates for a difference in the rate of data flow, or the time of occurrence of events when transferring data from one device to another.
- burst** In data communication, a sequence of signals counted as one unit in accordance with a specific criterion or measure. (A)

C

- capacity** Total amount of User Data stored on one data cartridge in 8-bit bytes. *Synonymous with "User Capacity" or "Native Capacity"*. This is the capacity that the user sees after the ECC/Format/ERP and other overhead has been assessed (no compression).
- capacity, raw** Total amount of data stored on one data cartridge in 8-bit bytes before any ECC/Format/ERP and other overhead has been assessed (no compression).
- capacity, user** Total amount of data stored on one data cartridge in 8-bit bytes that is sent by the host computer. This is the capacity that the user sees after the ECC/Format/ERP and other overhead has been assessed (no compression).
- cartridge** A storage device that consists of magnetic tape on a supply reel in a protective housing.
- cartridge scratch loader** A device that attaches to a tape drive to automatically load and unload tape cartridges into and out of the drive.
- CC** *See* cleaning cartridge
- cleaning cartridge** A data cartridge that contains special material to clean the tape path in a transport or drive.
- compress** To save space by eliminating gaps, empty fields, redundancy, or unnecessary data to shorten the length of records or files. (IBM)
- condition** One of a set of specified values that a data item can assume. (IBM)
- conditioning time** The amount of time to prepare a tape cartridge for use in a T9840 Tape Drive.
- configuration** The manner in which the hardware and software of an information processing system is organized and interconnected. (T)
- connector** An electrical or optical part that joins two or more other parts.

D

- data error rate** The number of errors that occur per a measurable amount of data on a tape.
- data rate** The speed of a data transfer process, usually expressed in bits per second or bytes per second. (IBM)

data tape	A data cartridge formatted for use as a regular data tape for the system in which it is used.
data tracks	The regions of recorded tape containing user data formed as discreet longitudinal “tracks” (similar to railroad tracks).
diagnostics	Pertaining to the detection and isolation of errors in programs and faults in equipment.
drive	A drive controls the movement of the tape and records or reads the data on the tape as desired by the customer.
dump	To copy the contents of all or part of storage to collect error information.
dynamic host configuration protocol (DHCP)	An IP protocol that a host uses to obtain all necessary configuration information, including an IP address.

E

emulation	The use of programming techniques and special machine features to permit a computing system to execute programs written for another system. (IBM)
encryption	The translation of data into a secret code. Encryption is one of the most effective ways to achieve data security. To read an encrypted file, you must have access to a special key or password that enables you to decipher it.
enterprise	A representation of the goals, organizational structure, business processes, and information resources and requirements of an enterprise. (IBM)
Enterprise Systems Connection (ESCON)	A set of IBM products and services that provide a dynamically-connected environment within an enterprise. (IBM)
environmental requirement	Any of the physical conditions required for the protection and proper operation of a functional unit; the requirement is usually specified as a nominal value and a tolerance range. For a device, there may be more than one set of environmental requirements; for example, one set for transport, another for storage, and another for operation. (T) (A)
EOT	End of tape.
error	A discrepancy between a computed, observed, or measured value or condition and the true, specified, or theoretically correct value or condition. (I) (A)
ESCON	<i>See</i> Enterprise Systems Connection.
ESCON channel	A channel having an Enterprise Systems Connection channel-to-control-unit I/O interface that uses optical cables as a transmission medium.
ESD	Electrostatic Discharge.

F

fault symptom code

(FSC) A four-character hexadecimal code generated in response to an error to help isolate failures within the device. Some FSCs are for information purposes only.

FC *See* Fibre Channel.

fiber optics The branch of optical technology concerned with the transmission of radiant power through fibers made of transparent materials such as glass, fused silica, and plastic. (E)

fiber-optic cable A cable made of ultrathin glass or silica fibers which can transmit data using pulses of laser light. Fiber-optic cables have several advantages over copper cables: they have much less signal loss; they allow information to be transmitted at higher speeds and over longer distances; they are not affected by external electrical noise; and they are better for transmissions which require security.

Fibre Channel The National Committee for Information Technology Standards standard that defines an ultrahigh-speed, content-independent, multilevel data transmission interface that supports multiple protocols simultaneously. Fibre Channel supports connectivity to millions of devices over copper and/or fiber-optic physical media and provides the best characteristics of both networks and channels over diverse topologies.

fibre connection

(FICON) An ESA/390 and zSeries computer peripheral interface. The I/O interface uses ESA/390 and zSeries FICON protocols (FC-FS and FC-SB-2) over a Fibre Channel serial interface that configures units attached to a FICON-supported Fibre Channel communications fabric.

FICON channel A channel having a Fibre Channel connection (FICON) channel-to-control-unit I/O interface that uses optical cables as a transmission medium. May operate in either FC or FCV mode.

file-protect To prevent the erasure or overwriting of data stored on data cartridges. *See also* write-protect switch.

firmware An ordered set of instructions and data stored in a way that is functionally independent of main storage; for example, microprograms stored in ROM. (T)

FRU Field replaceable unit.

FSC Fault symptom code.

FTP File Transfer Protocol.

G

Gb Gigabit, equal to 10^9 bits.

Gbps Gigabits per second.

gigabyte (GB) One $\times 2^{30}$ bytes (binary), or 1×10^9 (decimal).

H

- hardware** All or part of the physical components of an information processing system, such as computers or peripheral devices. (T) (A)
- host** The primary computer on a network, with which other computers interact.
- host interface** An interface between a network and host computer. (T)
- hub** A Fibre Channel Arbitrated Loop switching device that allows multiple servers and targets, such as storage systems, to connect at a central point. A single hub configuration appears as a single loop.

I

- indicator** A device that provides a visual or other indication of the existence of a defined state. (T)
- Initial Program Load (IPL)** The initialization procedure that causes an operating system to commence operation.
- initialization** The operations required for setting a device to a starting state, before the use of a data medium, or before implementation of a process. (T)
- input/output (I/O)** Pertaining to a device, process, or channel involved in data input, data output, or both. (IBM)
- internet protocol (IP)** A protocol used to route data from its source to its destination in an Internet environment. (IBM)
- internet protocol (IP) address** A four-byte value that identifies a device and makes it accessible through a network. The format of an IP address is a 32-bit numeric address written as four numbers separated by periods. Each number can be from 0 to 255. For example, 129.80.145.23 could be an IP address.
- IP** See internet protocol.

L

- library** A robotic system that stores, moves, mounts, and dismounts data cartridges that are used in data read or write operations.
- link** A physical connection (electrical or optical) between two nodes of a network.
- loader** The device that physically loads data cartridges for use.

M

- magnetic tape** A tape with a magnetizable layer on which data can be stored. (T)
- manual operation** Processing of data in a system by direct manual techniques. (IBM)
- MB** Megabytes, or 1,048,576 bytes.
- menu** A list of options displayed to the user by a data processing system, from which the user can select an action to be initiated. (T)
- Multiple Virtual Storage (MVS)** IBM's Multiple Virtual Storage, consisting of MVS/System Product Version 1 and the MVS/370 Data Facility Product operating on a System/370 processor. (IBM).
- Multiple Virtual Storage/Enterprise Systems Architecture (MVS/ESA)** An extended version of IBM's MVS.
- MVS** *See* Multiple Virtual Storage
- MVS/ESA** *See* Multiple Virtual Storage/Enterprise Systems Architecture

N

- network** An arrangement of nodes and branches that connects data processing devices to one another through software and hardware links to facilitate information interchange.

O

- offline** Neither controlled by, nor communicating with, a computer. (IBM)
- online** Pertaining to the operation of a functional unit when under the direct control of the computer. (T)
- operator control panel** A functional unit that contains switches used to control all or part of a computer and possibly the indicators giving information about its functioning. (T)

P

- performance** One of two major factors on which the total productivity of a system depends. Performance is largely determined by a combination of throughput, response time, and availability. (IBM)

port A specific communications end point within a host. A port is identified by a port number. (IBM)

R

R/W Read/write

read/write head The data sensing and recording unit of a tape drive. (IBM)

reclaim The act of overwriting a 9840 legacy data cartridge by a newer generation drive. For example, a cartridge written by a T9840A drive can be overwritten (reclaimed) by either a T9840C or T9840D drive while a cartridge written by a T9840C drive can be reclaimed by a T9840D drive.

release A distribution of a new product or new function and fixes for an existing product. (IBM)

rewind To move tape from the take-up hub to the supply hub. (IBM)

ROM Read-only memory.

S

SCSI *See* small computer system interface.

SLC *See* StorageTek Library Console.

small computer system interface (SCSI)

An input and output bus that provides a standard interface between devices.

StorageTek Library Console

The operator panel software application used for the SL8500 Modular Library System.

submenu A menu related to and reached from a main menu. (IBM)

subsystem A system that is part of some larger system.

switch In Fibre Channel technology, a device that connects Fibre Channel devices together in a fabric.

system A combination of functionally interrelated interacting mechanical and electrical elements designed to work as a coherent entity.

T

tape *See* magnetic tape.

tape drive A device for moving magnetic tape and controlling its movement. (T)

TCP/IP Transmission Control Protocol/Internet Protocol.

**transmission control
protocol/internet protocol
(TCP/IP)**

A set of communication protocols that support peer-to-peer connectivity functions for both local and wide area networks. (IBM)

V

vary offline To change the status of a device from online to offline. When a device is offline, no data set may be opened on that device. (IBM)

vary online To restore a device to a state where it is available for use by the system. (IBM)

VolSafe VolSafe (volume safe) is a special StorageTek feature that provides write once, read many (WORM) technology to VolSafe-designated tape cartridges. VolSafe permits new data to only append the tape media, while it prevents erasure or overwrite of previously written data.

VOLSER 1. VOLume SERial Number. It is usually six characters long and is both the paper label stuck on the back edge of the cartridge and in the VOLID label that is recorded, particularly by MVS systems, at the beginning of the media.
2. An alphanumeric label that the host software uses to identify a volume. It attaches to the spine of a cartridge and is both human- and machine-readable.

W

wrap A single pass of tape from either BOT to EOT or EOT to BOT with the heads in a fixed transverse location.

write-enabled A setting on a data cartridge that allows data to be written on the tape.

write operation An output operation that sends a processed record to an output device or output file. (IBM)

write-protected A setting on a data cartridge that prevents data from being written on the tape. Reading data is still possible.

Index

Symbols

* (asterisk) message 78

A

activity indicator 40
advertencia
 mensajes en el manual 14
agreement, internal code 21
alert messages in manual 14
ASIA Diags message 78

B

Bank n Bad message 78
Boot Fail message 78
BT Monitor message 78
build MIR 72
Build MIR command 62
button. See switches 41

C

cartridge
 care of 74
 description 30
 manual unload device 41
 media ID labels 30
 mixed media management 31
 read/write compatibility 31
 VolSafe 30
 write protect 69
cartridge scratch loader, description 29
caution
 description 14
 shielded cables 19
CC Diags message 78
Chk xxxx message 78
clean indicator 40
clean the drive 73
cleaning cartridge
 overview 30
Cleaning message 78

CodCrFail1message 79
CodCrFail2 message 79
CodeUpDate message 79
CodUpFail1 message 79
CodUpFail2 message 79
CodUpFail3 message 79
CodUpFail4 message 79
compatibility, read/write 31
compliance statements
 FCC 19
 Japanese 20
 Taiwan 20
configuration menu
 ESCON 57
 Fibre Channel 52
 FICON 58
 SCSI 55
configurations
 cartridge scratch loader 29
 library attached 28
 manual load units 26
Customer Initiated Maintenance (CIM) 17

D

data cartridge
 care of 74
 load 70
 make 71
 shipping 75
 unload 71
DatCrFail1 message 79
dimensions, tape drive 85, 86
display, tape drive 42
DmpCrFail1 message 79
DmpCrFail2 message 79
DmpWrFail1 message 79
DmpWrFail2 message 79
document conventions
 blue 15
 bold 15
 initial cap 15

italic font 15
drive
 configurations
 cartridge scratch loader 29
 library attached 28
 manual load drive 26
 interfaces 29
 load/unload slot 40
 manual unload device 41
 menu system 50
 operations menu 62
 read/write compatibility 31
DumpAgain? message 80
DumpToHost message 80

E

encryption
 description of 24
 status LED 25
ESCON configuration menu 57
Exp CI Cart message 80

F

fault LED 44
FCC compliance statement 19
Fibre Channel configuration menu 52
FICON configuration menu 58
firmware release level. determination 68
Fix Cfg Err message 80
folder
 properties 47
 SLC 45
 status 46

G

glossary 93

I

indicator
 activity 40
 clean 40
 encryption status 25
 operator panel 39
 power 40
 service 40
 user actions 77
Init xxxx message 80
interface of the drive 29
internal code license 21
IPL
 how to 65
 switch 41
IPL From Tp command 62
IPL Pend message 80

J

Japanese compliance statement 20

L

label
 media ID 30
LED
 activity 40
 clean 40
 encryption status 25
 fault 44
 operator panel 39
 power 40
 PWR 44
 service 40
library attached drive, description 28
license, internal code 21
load a data cartridge 70
Load CC message 80
Load ESCON message 80
Load FIBRE message 80
Load FICON message 80
Load SCSI message 80
Load xxxx message 80
load/unload slot 40
Loading message 80
Locating message 80

M

MakeCodeTp command 62
MakeDataTp command 62
MakeDumpTP command 62
management of mixed media 31
manual load drive, description 26
manual organization 13
manual unload device 41
manuals containing related information 15
media, cartridge management 31
Memory Err message 80
mensajes de alerta en el manual 14
menu
 operations
 offline 61
 online 50
 overview 49
 structure overview 49
 switch 41
 use of 50
messages
 * (asterisk) 78
 ASIA Diags 78
 Bank n Bad 78
 Boot Fail 78

- BT Monitor 78
- CC Diags 78
- Chk xxxx 78
- Cleaning 78
- CodCrFail1 79
- CodCrFail2 79
- CodeUpDate 79
- CodUpFail1 79
- CodUpFail2 79
- CodUpFail3 79
- CodUpFail4 79
- DatCrFail1 79
- DmpCrFail1 79
- DmpCrFail2 79
- DmpWrFail1 79
- DmpWrFail2 79
- DumpAgain? 80
- DumpToHost 80
- Exp Cl Cart 80
- Fix Cfg Err 80
- Init xxxx 80
- IPL Pend 80
- Load CC 80
- Load ESCON 80
- Load FIBRE 80
- Load FICON 80
- Load SCSI 80
- Load xxxx 80
- Loading 80
- Locating 80
- Memory Err 80
- NTReady A 80
- NTReady F 80
- NTReady U 80
- Offline 66
- Offline alternating with * (asterisk) 80
- Online 81
- OnLn Pend 81
- operator panel display 78
- operator panel display, translated 83
- Power Fail 81
- Reading 81
- Ready A 81
- Ready F 81
- Ready H 81
- Ready L 81
- Ready U 81
- Rewinding 81
- Save Fails 81
- Saving Dump 81
- Start Init 81
- Trapped 81
- Unloading 81
- UnWr xxxx 81
- Write Prot 81
- Writing 81
- xxxx Dmp y 79

- messages, tape drive display 42
- MIR, build 72

N

- notes, description 14
- NTReady A message 80
- NTReady F message 80
- NTReady U message 80

O

- offline
 - menu system 61
 - setting the drive 65
- Offline alternating with * (asterisk) message 80
- Offline message 66
- online
 - menu 50
 - setting the drive 66
- Online message 81
- OnLn Pend message 81
- operator panel
 - menu system 49
 - switches 41
 - tape drive 39
- operator panel display messages 78
- organization of this manual 13
- overview menus structure 49

P

- package a cartridge for shipping 75
- place the drive offline 65
- place the drive online 66
- Power Fail message 81
- power indicator 40
- power-off the drive 64
- power-on the drive 64
- precaución, mensajes en el manual 14
- properties folder 47
- publications containing related information 15
- PWR, LED 44

R

- ReadCustTp command 62
- Reading message 81
- Ready A message 81
- Ready F message 81
- Ready H message 81
- Ready L message 81
- Ready U message 81
- related publications 15
- reset the drive 65
- Rewinding message 81

S

- Save Fails message 81
- Saving Dump message 81
- SCSI configuration menu 55
- select switch 41
- service indicator 40
- shipping a cartridge 75
- SL8500 drive tray LED 44
- SLC, folder 45
- slot, load/unload 40
- SrvoLdUnld command 62
- Start Init message 81
- status folder 46
- store a data cartridge 74
- structure of menus 49
- Sun Web site 16
- switches, operator panel 41

T

- Taiwan warning statement 20
- tape bar 42
- tape drive
 - interfaces 29
- task, operator
 - build MIR 72
 - clean the drive 73
 - load data cartridge 70
 - make a data cartridge 71
 - place the drive offline 65
 - place the drive online 66
 - power-off the drive 64
 - power-on the drive 64
 - reset the drive 65
 - unload data cartridge 71
 - view drive configuration 67
 - view firmware level 68
 - write protect a cartridge 69
- translated messages 83
- Trapped message 81

U

- unload a data cartridge 71
- unload switch 41
- Unloading message 81
- UnWr xxxx message 81
- user response to indicators 77
- using the menu system 50

V

- vary the tape drive offline 65
- vary the tape drive online 66
- view

- drive configuration 67
- firmware level 68
- online main menu
 - drive 50
 - entry point 50
 - exit 50
 - fibre channel drives 50
 - FICON drives 50
 - firmware 50
- VolSafe cartridge 30

W

- W/R Diag command 62
- warning, description of 14
- WORM, see VolSafe 30
- Write Prot message 81
- write protection, cartridge 69
- Writing message 81

X

- xxxx Dmp y message 79

Sun Microsystems, Inc. 4150 Network Circle, Santa Clara, CA 95054 USA Phone 1-650-960-1300 or 1-800-555-9SUN Web sun.com



ARGENTINA: 5411-4317-5636 • AUSTRALIA: 1-800-550-786 • AUSTRIA: 43-1-601-26-0 • BALKANS: 301-6188-111 • BELGIUM: 32-2-704 89 83 • BRAZIL: 55-11-51872100 • BRUNEI: 65-216-8333 • CANADA: 1-800-422-8020 (GENERAL); 416-964-2001 (LEARNING MANAGEMENT SYSTEM SALES, TORONTO) • CHILE: 562-372-4500 • COLOMBIA: 571-629-2323
CZECH REPUBLIC: 420 2 33009311 • DENMARK: 45 4556 5040 • EGYPT: 00 202 570 9442 • FINLAND: 358-9-525-551 • FRANCE: 33-1-41-33-17-17 • GERMANY: 49-89-460-08-2788 • GREECE: 30-01-6188101 • HONG KONG: 852-2877-7077 • HUNGARY: 361-202-4415 • INDIA: 91-80-229-8989 • INDONESIA: 65-216-8333 • IRELAND: 353-1-668-4377
ISRAEL: 972-9-9710500 • ITALY: 39-02-9259511 • JAPAN: 81-3-5779-1820 • KOREA: 82-2-3453-6602 • MALAYSIA: 603-2116-1887 • MIDDLE EAST: 00 9714 3366333 • MEXICO: 525-261-0344 • NETHERLANDS: 31-33-4515200 • NEW ZEALAND: 0800-786-338 • NORTH WEST AFRICA: 00 9714 3366333 • NORWAY: FROM NORWAY: 47-22023950, TO NORWAY: 47-23369650 • PAKISTAN: 00-9714-3366333 • PEOPLE'S REPUBLIC OF CHINA: 8610-6803-5588 • PHILIPPINES: 632-885-7867 • POLAND: 48-22-8747848 • PORTUGAL: 351-21-413-4000 • RUSSIA: 7-095-935-8411 • SAUDI ARABIA: 00 9714 3366333 • SINGAPORE: 65-216-8300 • SOUTH AFRICA: 27-11-256-6300 • SPAIN: 34-902-210-412 • SRI LANKA: 65-2168333 • SWEDEN: 46-8-631 22 00 • SWITZERLAND: 41-1-908-90-50 (GERMAN) 41-22-999-0444 (FRENCH) • TAIWAN: 886-2-25185735 • THAILAND: 662-344-6855 • TURKEY: 90 212 335 22 00 • UNITED KINGDOM: 44-1276-416-520 • UNITED STATES: 1-800-422-8020 • VENEZUELA: 582-905-3800 • VIETNAM: 65-216-8333 • WORLDWIDE HEADQUARTERS: 1-650-960-1300

SUN™ THE NETWORK IS THE COMPUTER ©2006 Sun Microsystems, Inc. All rights reserved. Sun, Sun Microsystems, and the Sun logo are trademarks or registered trademarks of Sun Microsystems, Inc. in the United States and other countries.