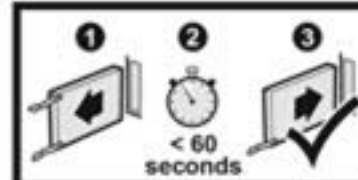




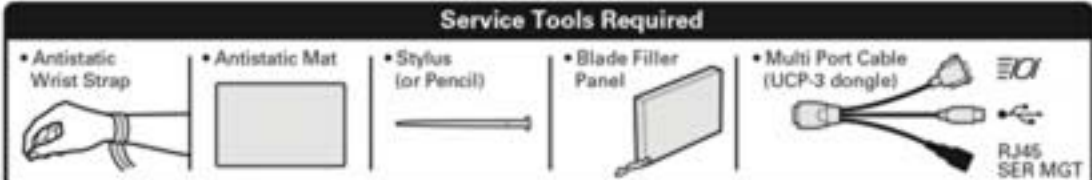
**Set Up Your Server Firmware and Software with Oracle System Assistant**

1. Attach a keyboard, monitor, and mouse to the server module or use the ILOM Remote Console.
2. Power on the server module with the power button or through the ILOM interface.
- 3a. If Oracle System Assistant is installed (most cases), you will be prompted to start it by pressing F9.
- 3b. If Oracle System Assistant is not installed, see the Installation Guide for setting up firmware and software.

For more information see the Installation Guide.



**IMPORTANT**  
Blades might overheat.  
Insert blade filler panel into empty slot within 60 seconds of blade removal.

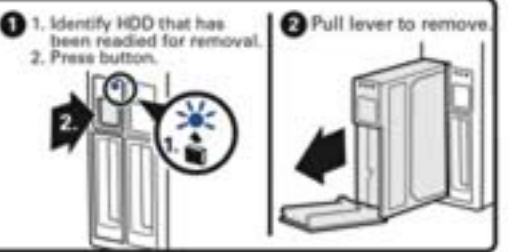
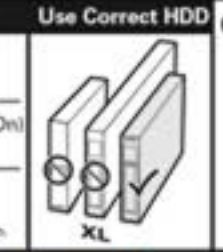


**1 HDD Removal - Hot Service**

**HDD Status Indicators**

- Operational (Steady On)
- Activity (Random Blink)
- Fault - Service Required (Steady On)
- Locate (Fast Blink)
- Ready to Remove\* Service Allowed (Steady On)

\*Illuminated only as a result of management action.

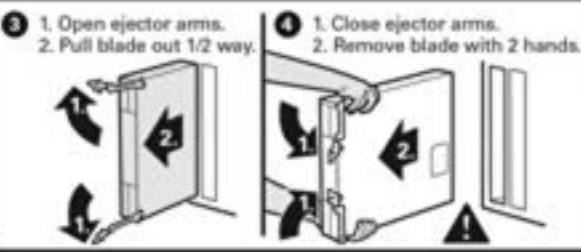
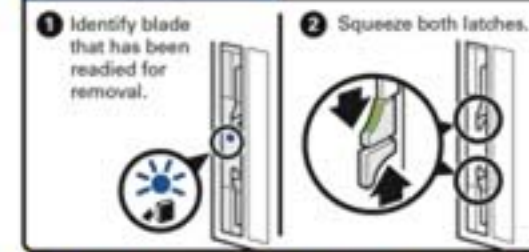


**2 HDD Filler Removal - Hot Service**

**IMPORTANT**  
All bays must be populated by either a HDD or HDD filler.

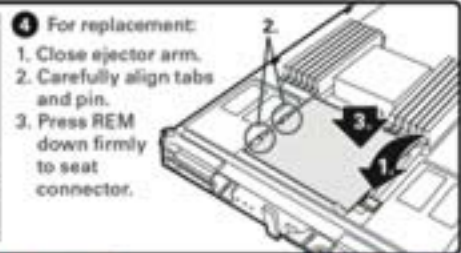
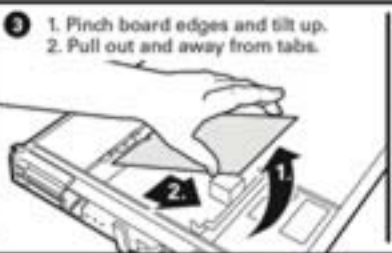
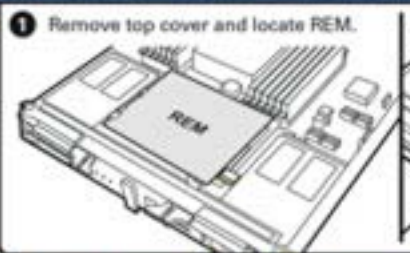


**3 Blade (BL) Removal**



**IMPORTANT**  
Insert blade filler panel into empty slot until service task is completed.

**4 RAID Expansion Module (REM) Replacement**

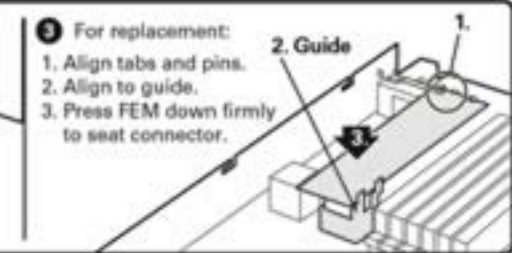
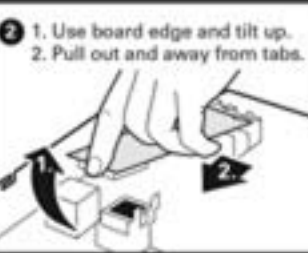
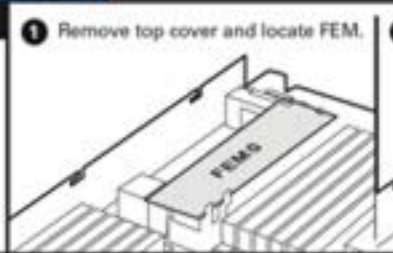


**5 Fabric Expansion Module (FEM) Replacement**

**IMPORTANT**

- FEMs are available in single and double widths.
- Install one FEM per blade.
- Always install single wide cards in FEM 0.

Single Wide	Double Wide
<input type="checkbox"/> FEM 1	<input type="checkbox"/> FEM 0
<input type="checkbox"/> FEM 0	<input type="checkbox"/> FEM 0



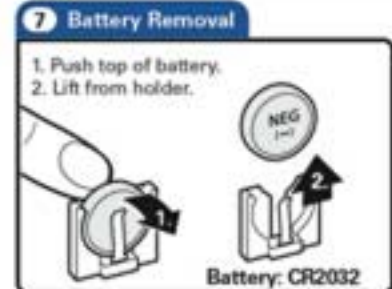
**Top Cover Removal**

To open, press button and push top cover to rear.



**IMPORTANT**

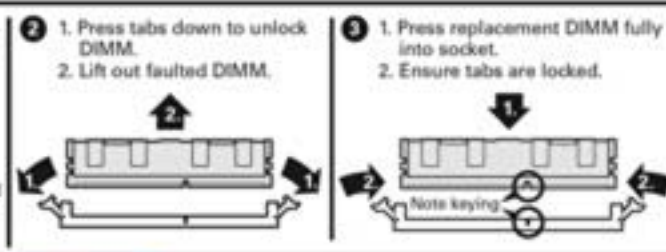
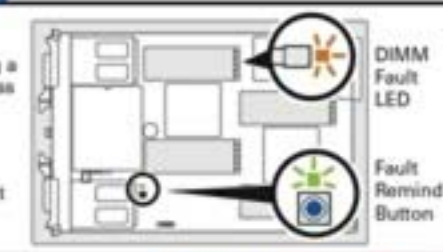
- Handle blade with care. Flash drives might extend past rear of blade.
- If present, always install Oracle System Assistant USB in Port 0.



**8 DDR-3 Memory Replacement**

**IMPORTANT**

- Always install a replacement DIMM with the same part number and capacity as the failed DIMM.
- Ensure all sockets are populated with either a DIMM or DIMM filler.



**Status Indicators & Buttons**

- Locate LED/Button (Fast Blink) [~ 1 sec ~]
- Ready to Remove Service Allowed (Steady On)
- Fault Service Required (Steady On)
- Operational (Steady On)
- Standby (Blink) [~ 3 sec ~]
- Transition (Blink) [~ 1 sec ~]
- On/Standby Button
- Reset Button (For Service Use Only)

**On/Standby Button Use**

- POWER ON BLADE:** Press and release.
- SET BLADE TO STANDBY:** Graceful: Press and release. Emergency: Press and hold >5 seconds.

**Remind Button & Indicator**

- Fault Remind Power LED Indicates Fault LED power available.
- Fault Remind Button Press to light Fault LEDs for DIMMs or Processors.

**Processor Fault LEDs**

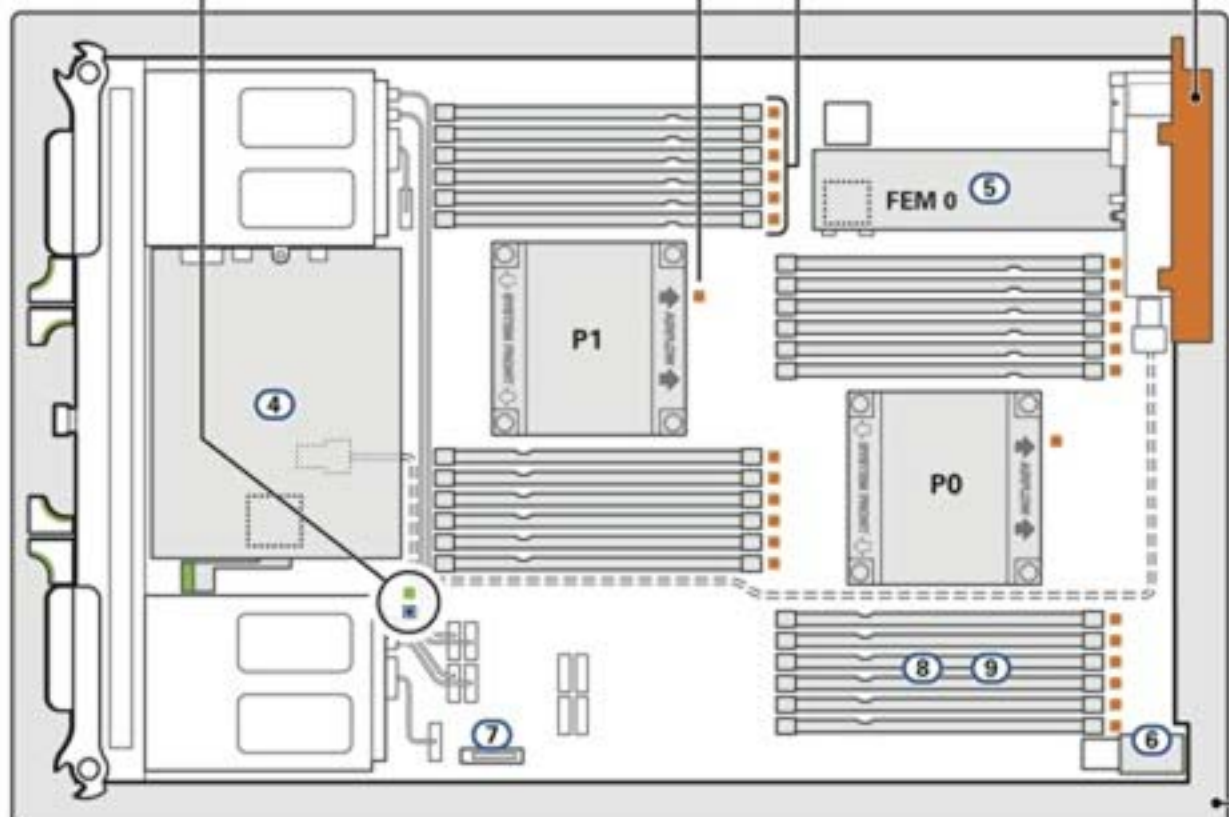
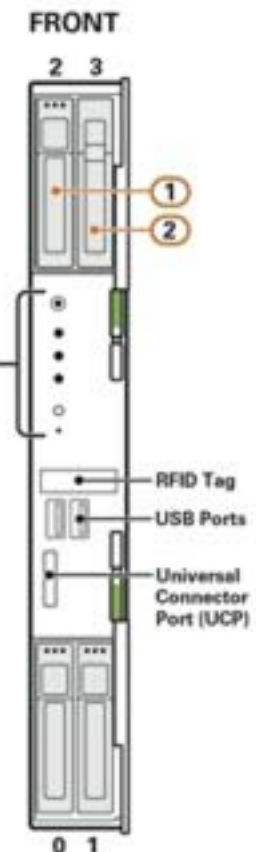
Service action required.

**DIMM Fault LEDs**

Service action required.

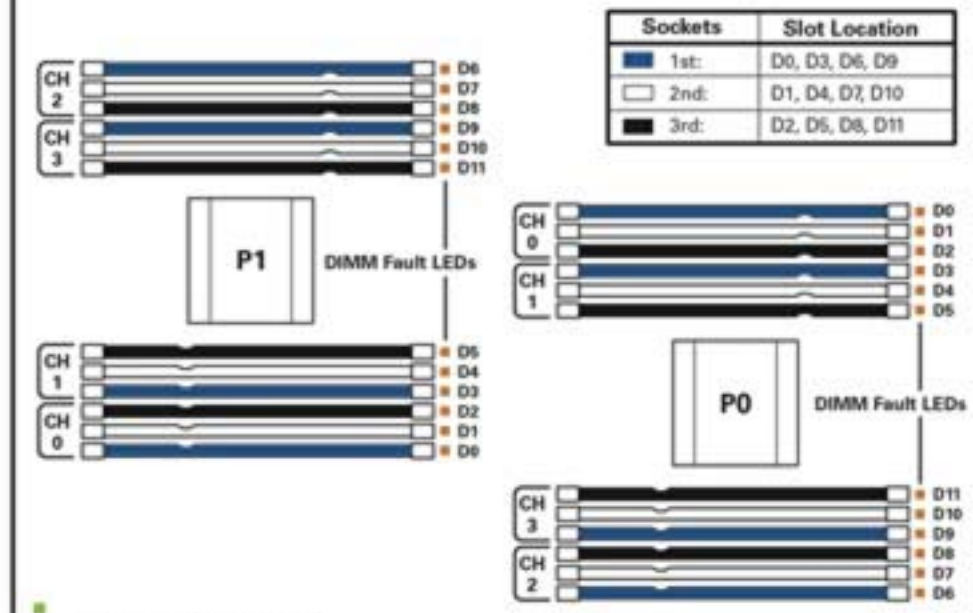
**IMPORTANT**

Remove connector cover before use.



**9 DDR-3 Memory Configuration/Upgrade**

- Ensure all slots are filled with either a DIMM or DIMM filler.
- For optimal performance install DIMMs in groups of 4 as shown in table.
- For memory configuration details, see Service Manual.



**IMPORTANT**  
For processor, disk backplane, and motherboard failures, see Service Manual.