

**Oracle© Enterprise Single Sign-on
Anywhere**

User Guide

Release 11.1.1.5.0

E21023-01

March 2011

Copyright ©2011, Oracle and/or its affiliates. All rights reserved.

This software and related documentation are provided under a license agreement containing restrictions on use and disclosure and are protected by intellectual property laws. Except as expressly permitted in your license agreement or allowed by law, you may not use, copy, reproduce, translate, broadcast, modify, license, transmit, distribute, exhibit, perform, publish, or display any part, in any form, or by any means. Reverse engineering, disassembly, or decompilation of this software, unless required by law for interoperability, is prohibited.

The information contained herein is subject to change without notice and is not warranted to be error-free. If you find any errors, please report them to us in writing.

If this software or related documentation is delivered to the U.S. Government or anyone licensing it on behalf of the U.S. Government, the following notice is applicable:

U.S. GOVERNMENT RIGHTS Programs, software, databases, and related documentation and technical data delivered to U.S. Government customers are "commercial computer software" or "commercial technical data" pursuant to the applicable Federal Acquisition Regulation and agency-specific supplemental regulations. As such, the use, duplication, disclosure, modification, and adaptation shall be subject to the restrictions and license terms set forth in the applicable Government contract, and, to the extent applicable by the terms of the Government contract, the additional rights set forth in FAR 52.227-19, Commercial Computer Software License (December 2007). Oracle USA, Inc., 500 Oracle Parkway, Redwood City, CA 94065.

This software is developed for general use in a variety of information management applications. It is not developed or intended for use in any inherently dangerous applications, including applications which may create a risk of personal injury. If you use this software in dangerous applications, then you shall be responsible to take all appropriate fail-safe, backup, redundancy, and other measures to ensure the safe use of this software. Oracle Corporation and its affiliates disclaim any liability for any damages caused by use of this software in dangerous applications.

Oracle is a registered trademark of Oracle Corporation and/or its affiliates. Other names may be trademarks of their respective owners.

This software and documentation may provide access to or information on content, products, and services from third parties. Oracle Corporation and its affiliates are not responsible for and expressly disclaim all warranties of any kind with respect to third-party content, products, and services. Oracle Corporation and its affiliates will not be responsible for any loss, costs, or damages incurred due to your access to or use of third-party content, products, or services.

Table of Contents

Abbreviations and Terminology.....	4
About Oracle Enterprise Single Sign-on Anywhere.....	5
Setting Up ESSO-Anywhere.....	6
Updating ESSO-Anywhere.....	9
Rolling Back ESSO-Anywhere.....	10
Uninstalling ESSO-Anywhere.....	11

Abbreviations and Terminology

Following is a list of commonly-used abbreviations and terminology.

Abbreviation or Term	Full Name
Administrative Console	ESSO-LM Administrative Console
Agent	Logon Manager
FTU	First Time Use Wizard
ESSO-Anywhere	Oracle Enterprise Single Sign-on Anywhere
ESSO-PG	Oracle Enterprise Single Sign-on Provisioning Gateway
ESSO-LM	Oracle Enterprise Single Sign-on Logon Manager
ESSO-PR	Oracle Enterprise Single Sign-on Password Reset
ESSO-UAM	Oracle Enterprise Single Sign-on Universal Authentication Manager

About Oracle Enterprise Single Sign-on Anywhere

Oracle Enterprise Single Sign-on Anywhere (ESSO-Anywhere) is the latest innovation in single sign-on (SSO) technology, using Microsoft's ClickOnce technology to deploy Oracle Enterprise Single Sign-on Logon Manager (ESSO-LM) and Oracle Enterprise Single Sign-on Provisioning Gateway (ESSO-PG) to end users' desktops.

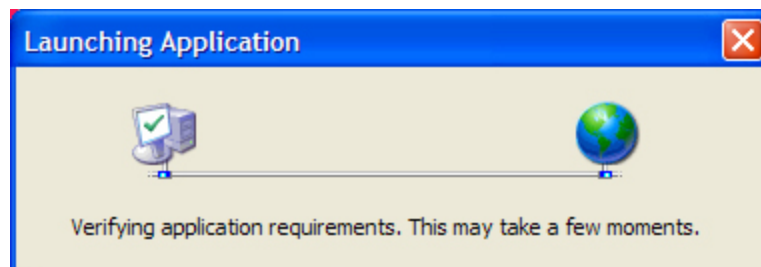
Using the ESSO-Anywhere Console, the administrator creates a deployment package configured with the Oracle products needed by users of an enterprise, making the package available over a Web server or file share. Users download this deployment package from an HTML interface that is included with the ESSO-Anywhere package, and which the administrator customizes. Users can then perform installations of the Oracle suite on their own workstations at the click of a button, with assurance that configurations are correct and ready to run, and without administrator intervention.

Setting Up ESSO-Anywhere

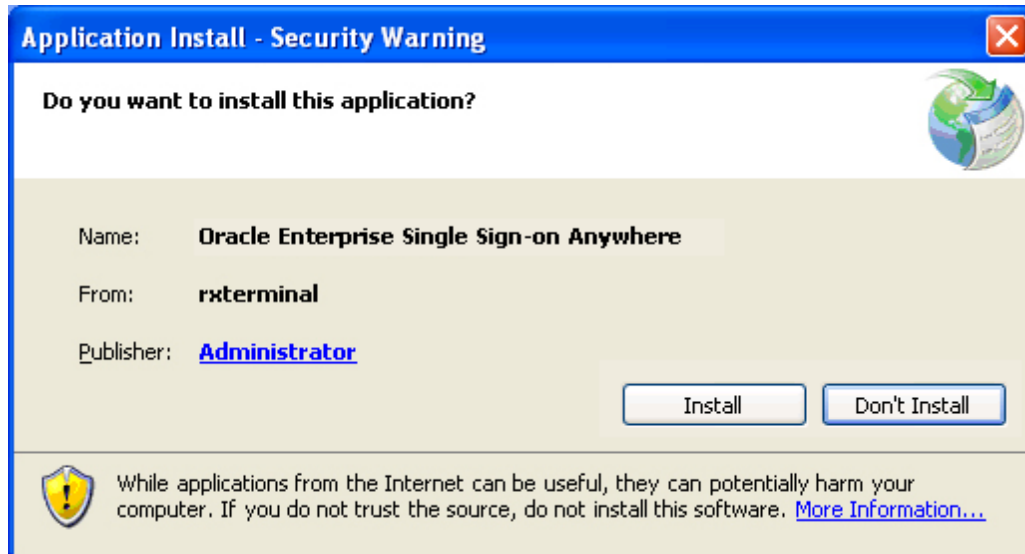
Prior to installing ESSO-Anywhere on your local workstation, you should have received any authentication hardware that you will need, if applicable. When you launch the installer, all the software and settings that you need to run ESSO-LM, and, if applicable, (ESSO-PG) will automatically be installed with one click. Your administrator will notify you where to locate the ESSO-Anywhere installer, and you will be directed to the ESSO-Anywhere landing page, which will look similar to the following:



1. Click on the **Install Oracle** button to launch the installation package. ESSO-Anywhere scans your workstation to verify that all prerequisites are present.



After ESSO-Anywhere ascertains that all prerequisites are present on your workstation, ESSO-Anywhere asks you to verify that the installation certificate is valid. There are two possibilities:

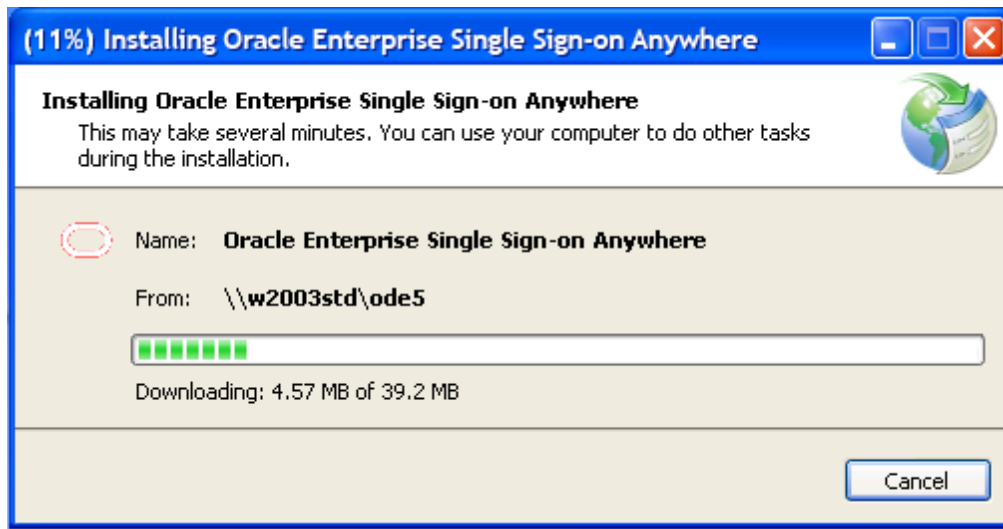


The certificate is valid. Click Install to proceed.



The certificate publisher is unknown. Check with your administrator before proceeding.

2. After you have verified the authenticity of the certificate, click **Install** to begin installation.



ESSO-Anywhere completes the installation. If you have not previously gone through the First Time Use (FTU) wizard, you will be prompted to do so after installation completes. If you have already supplied credentials to the system, your credentials are available immediately. You can begin using ESSO-LM, and ESSO-PG if it is included in the ESSO-Anywhere installation.

Updating ESSO-Anywhere

At various times you will receive notification that an update is available for ESSO-Anywhere. The frequency at which this occurs, and whether installing the update is mandatory, are determined by your administrator.

When an update is available, the following screen displays:



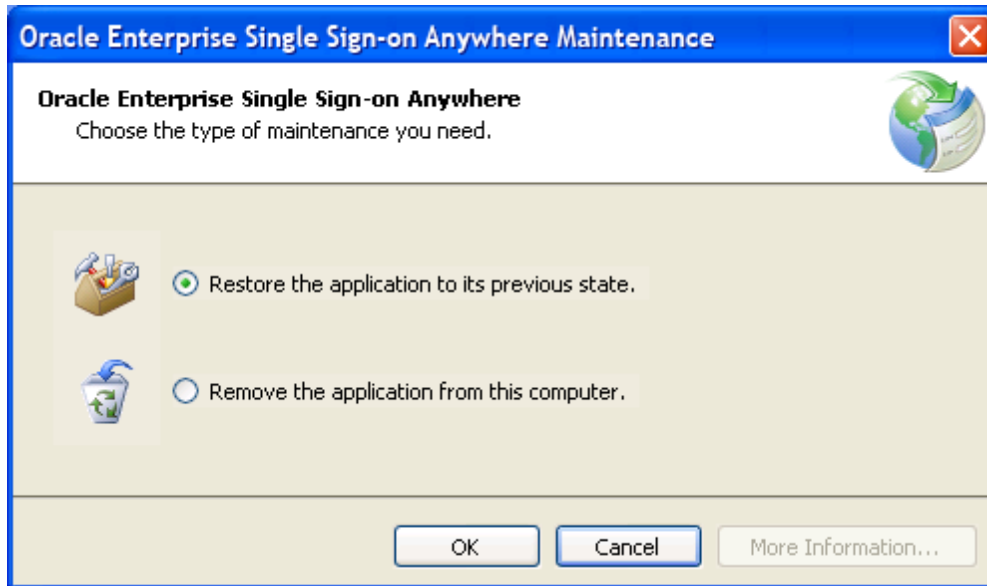
If your administrator has given you the option, you can choose to click **Skip** and not install the update. If you do not have the option or want to install the update, click **OK**.

Rolling Back ESSO-Anywhere

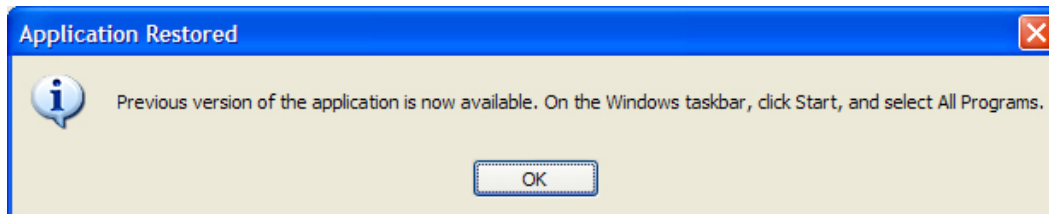
If your administrator decides to roll back your version of ESSO-Anywhere to an earlier version, you will receive a notification.

To perform a rollback:

1. Go to **Control Panel > Add or Remove Programs**.
2. Select **ESSO-Anywhere** from the program list, and click **Change/Remove**.
3. Select **Restore the application to its previous state**. Then click **OK**. ESSO-Anywhere installs the rollback.



4. When the **Application Restored** window displays, click **OK**.



Uninstalling ESSO-Anywhere

To uninstall ESSO-Anywhere:

1. Go to **Control Panel > Add or Remove Programs**.
2. Select **ESSO-Anywhere** from the program list, and click **Change/Remove**.
3. Select **Remove the application from this computer**.
4. Click the **OK** button.

