

Defining Constants and Variables for Oracle® Java CAPS Environments

Copyright © 2008, 2011, Oracle and/or its affiliates. All rights reserved.

License Restrictions Warranty/Consequential Damages Disclaimer

This software and related documentation are provided under a license agreement containing restrictions on use and disclosure and are protected by intellectual property laws. Except as expressly permitted in your license agreement or allowed by law, you may not use, copy, reproduce, translate, broadcast, modify, license, transmit, distribute, exhibit, perform, publish or display any part, in any form, or by any means. Reverse engineering, disassembly, or decompilation of this software, unless required by law for interoperability, is prohibited.

Warranty Disclaimer

The information contained herein is subject to change without notice and is not warranted to be error-free. If you find any errors, please report them to us in writing.

Restricted Rights Notice

If this is software or related documentation that is delivered to the U.S. Government or anyone licensing it on behalf of the U.S. Government, the following notice is applicable:

U.S. GOVERNMENT RIGHTS

Programs, software, databases, and related documentation and technical data delivered to U.S. Government customers are "commercial computer software" or "commercial technical data" pursuant to the applicable Federal Acquisition Regulation and agency-specific supplemental regulations. As such, the use, duplication, disclosure, modification, and adaptation shall be subject to the restrictions and license terms set forth in the applicable Government contract, and, to the extent applicable by the terms of the Government contract, the additional rights set forth in FAR 52.227-19, Commercial Computer Software License (December 2007). Oracle America, Inc., 500 Oracle Parkway, Redwood City, CA 94065.

Hazardous Applications Notice

This software or hardware is developed for general use in a variety of information management applications. It is not developed or intended for use in any inherently dangerous applications, including applications that may create a risk of personal injury. If you use this software or hardware in dangerous applications, then you shall be responsible to take all appropriate fail-safe, backup, redundancy, and other measures to ensure its safe use. Oracle Corporation and its affiliates disclaim any liability for any damages caused by use of this software or hardware in dangerous applications.

Trademark Notice

Oracle and Java are registered trademarks of Oracle and/or its affiliates. Other names may be trademarks of their respective owners.

Intel and Intel Xeon are trademarks or registered trademarks of Intel Corporation. All SPARC trademarks are used under license and are trademarks or registered trademarks of SPARC International, Inc. AMD, Opteron, the AMD logo, and the AMD Opteron logo are trademarks or registered trademarks of Advanced Micro Devices. UNIX is a registered trademark of The Open Group in the United States and other countries.

Third Party Content, Products, and Services Disclaimer

This software or hardware and documentation may provide access to or information on content, products, and services from third parties. Oracle Corporation and its affiliates are not responsible for and expressly disclaim all warranties of any kind with respect to third-party content, products, and services. Oracle Corporation and its affiliates will not be responsible for any loss, costs, or damages incurred due to your access to or use of third-party content, products, or services.

Contents

Defining Constants and Variables	5
Defining Project Variables	5
Defining Project Constants	7
Defining Environmental Constants	10

Defining Constants and Variables

This topic discusses the use and definition of constants and variables in Java CAPS Projects and Environments, and covers the following subtopics:

- “Defining Project Variables” on page 5
- “Defining Project Constants” on page 7
- “Defining Environmental Constants” on page 10

Defining Project Variables

FIGURE 1 Constant or Variable Icon



Project variables function as placeholders, having values that are determined when you create a specific Deployment Profile. Project variables can be literals or Environmental constants, as described in “Defining Environmental Constants” on page 10.

As an example, the following figure shows a Project variable defined to represent a password of a database user in a target Environment. A system manager assigns an actual value to this variable in the Deployment Profile editor. The value of the assigned Project variable (an Environmental constant) is then used to connect to the database in the target Environment.

You can add a variable to a Project by selecting the *New > Variable* or *Constant* option from the *Project* context menu in the NetBeans IDE, which displays the following dialog box.

FIGURE 2 Creating a Project Variable

TABLE 1 Project Variable Options

Property	Description/Usage
Name	Your name for the Project variable.
Category	You may assign a category name, if desired.
Description	Your description for the variable.
Is a Constant	Does not apply to variables; leave unchecked.
Value Type	Does not apply to variables.
Value	Does not apply to variables.

Constants and variables are automatically added to a Variables and Constants object group within the Project, as shown in the following figure. Selecting an entry in the upper panel displays it in the lower panel, where you can modify it. By clicking OK you overwrite the previous definition with the modified version.

FIGURE 3 Variables and Constants Object Group

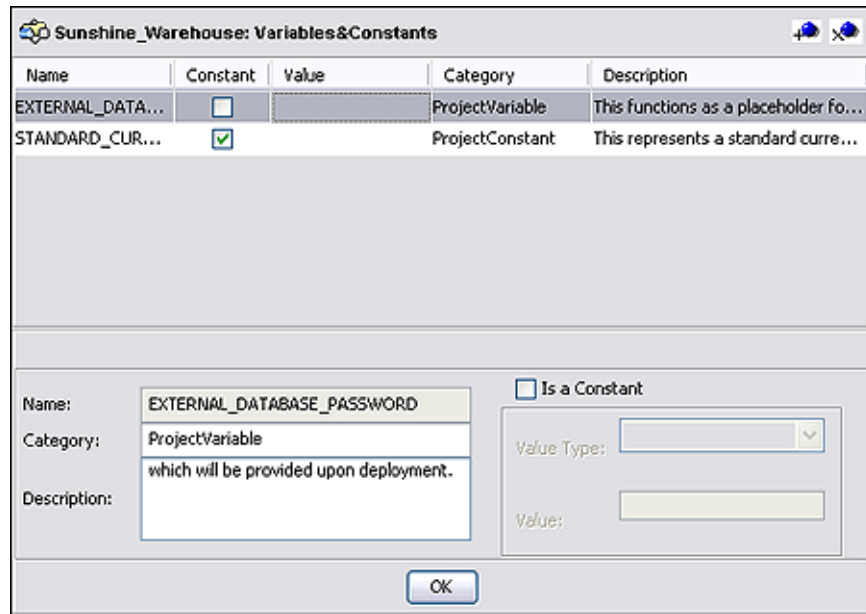




TABLE 2 Variables and Constants Object Group Icons

Icon	Name	Function
	Add a New Constant or Variable	Adds a new variable to the list.
	Delete a Highlighted Constant or Variable	Deletes the selected variable from the list.

Defining Project Constants

FIGURE 4 Constant or Variable Icon



Project constants are name-value pairs that are visible across the Project. Using a constant allows you to define the value once, and then refer to it from the various Project configurations,

rather than having to redefine the value everywhere it is needed. For example, the following figure shows a standard currency defined to be used globally throughout the system.

You can add a constant to a Project by selecting the **New > Variable or Constant** option from the *Project* context menu in the NetBeans IDE, which displays the following dialog box.

FIGURE 5 Creating a Project Constant

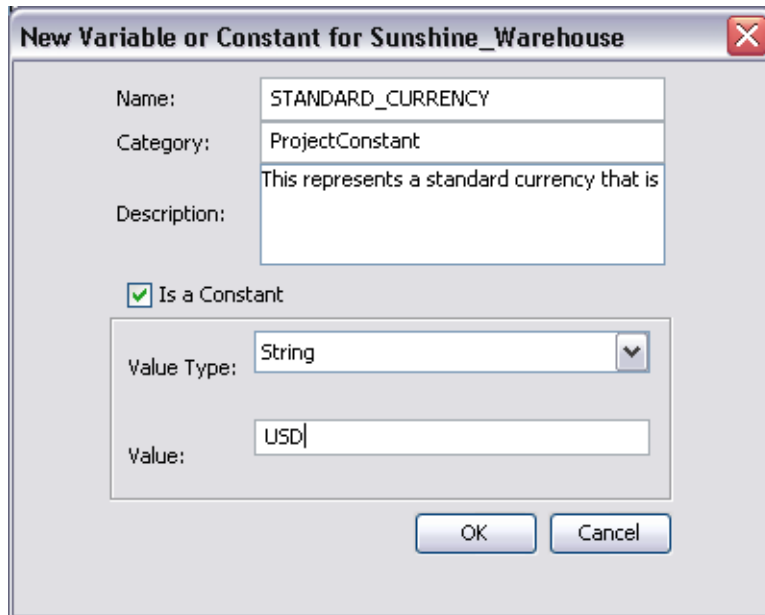


TABLE 3 Project Constant Options

Property	Option	Description/Usage
Name		Your name for the Project constant.
Category		You may assign a category name, if desired.
Description		Your description for the constant.
Is a Constant		Select to enable the constant properties fields.
Value Type	String	Allows the string value to be displayed explicitly.
	Password	Encrypts the value, displaying asterisks (*) in the field.
Value		The value for the constant.

Constants and variables are automatically added to a Variables and Constants object group within the Project, as shown in the following figure. Selecting an entry in the upper panel displays it in the lower panel, where you can modify it. By clicking OK you overwrite the previous definition with the modified version.

FIGURE 6 Variables and Constants Object Group

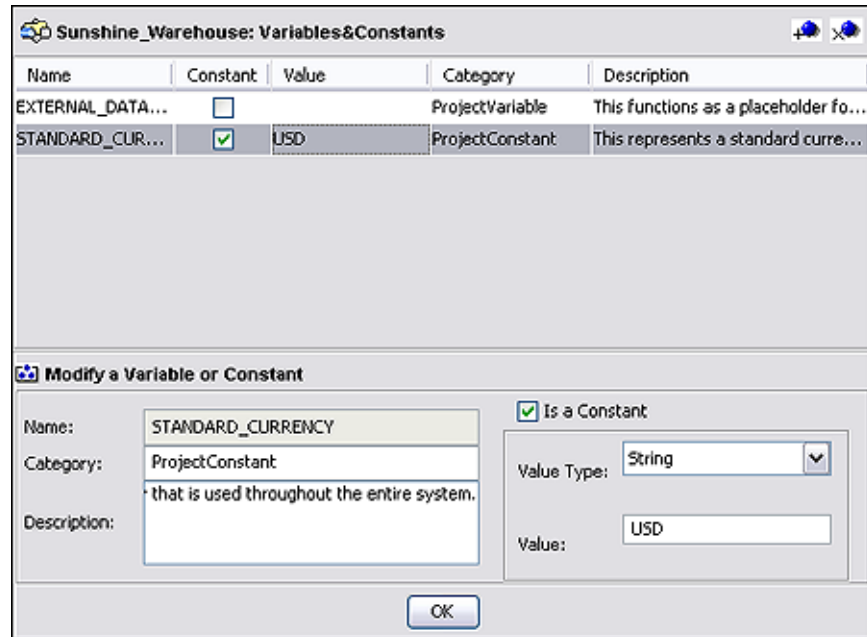




TABLE 4 Constants and Variables Object Group Icons

Icon	Name	Function
	Add a New Constant or Variable	Adds a new constant to the list.
	Delete a Highlighted Constant or Variable	Deletes the selected constant from the list.

Defining Environmental Constants

FIGURE 7 Constant or Variable Icon



Environmental constants are name-value pairs that are visible across the Environment. Using a constant allows you to define the value once, and then refer to it from the various Project configurations, rather than having to redefine the value everywhere it is needed. Selecting the New > Constant option from the Environment context menu, which displays the Create Environmental Constant dialog box shown in the following figure.

FIGURE 8 Create Environmental Constant Dialog

TABLE 5 Project Constant Options

Property	Option	Description/Usage
Name		Your name for the Environmental constant.
Category		You may assign a category name, if desired.

TABLE 5 Project Constant Options (Continued)

Property	Option	Description/Usage
Description		Your description for the constant.
Is a Constant		Automatically selected, not modifiable.
Value Type	String	Allows the string value to be displayed explicitly.
	Password	Encrypts the value, displaying asterisks (*) in the field.
Value		The value for the constant.

Note – When you create an Environmental constant, you assign a permanent value to it which cannot be overridden.

Constants are automatically added to a Constants object group within the Environment, as shown in the following figure. All constants defined for the specific Environment are listed in the *Constants* section of the panel, along with their various properties. Additional Environmental Constants can be defined using the lower part of the panel.

FIGURE 9 Environmental Constants Object Group

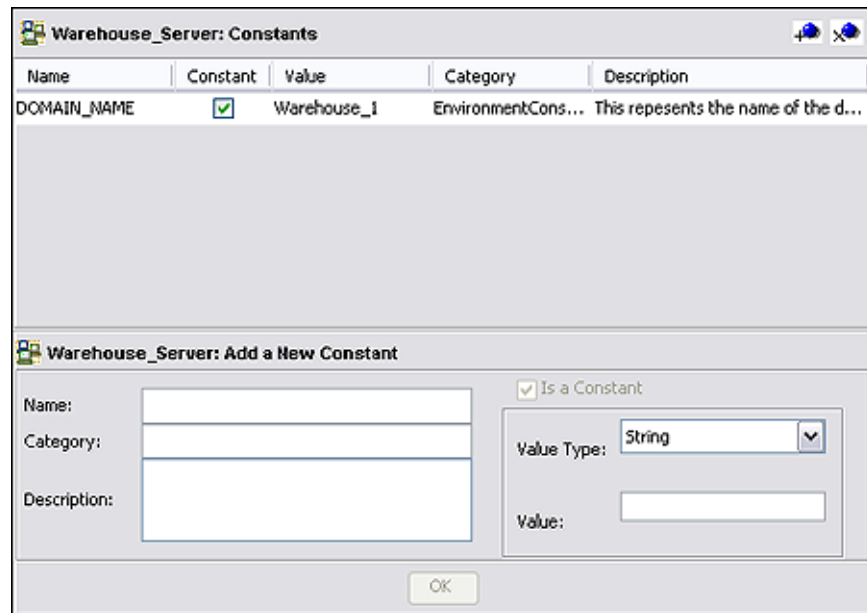




TABLE 6 Environmental Constants Object Group Icons

Icon	Name	Function
	Add a New Constant	Adds a new constant to the list.
	Delete a Highlighted Constant	Deletes the selected constant from the list.

Note – Refer to the *Java CAPS 6 Release Notes* regarding this feature.
