

Configuring JMS Clients for Oracle® Java CAPS

Copyright © 2008, 2011, Oracle and/or its affiliates. All rights reserved.

License Restrictions Warranty/Consequential Damages Disclaimer

This software and related documentation are provided under a license agreement containing restrictions on use and disclosure and are protected by intellectual property laws. Except as expressly permitted in your license agreement or allowed by law, you may not use, copy, reproduce, translate, broadcast, modify, license, transmit, distribute, exhibit, perform, publish or display any part, in any form, or by any means. Reverse engineering, disassembly, or decompilation of this software, unless required by law for interoperability, is prohibited.

Warranty Disclaimer

The information contained herein is subject to change without notice and is not warranted to be error-free. If you find any errors, please report them to us in writing.

Restricted Rights Notice

If this is software or related documentation that is delivered to the U.S. Government or anyone licensing it on behalf of the U.S. Government, the following notice is applicable:

U.S. GOVERNMENT RIGHTS

Programs, software, databases, and related documentation and technical data delivered to U.S. Government customers are "commercial computer software" or "commercial technical data" pursuant to the applicable Federal Acquisition Regulation and agency-specific supplemental regulations. As such, the use, duplication, disclosure, modification, and adaptation shall be subject to the restrictions and license terms set forth in the applicable Government contract, and, to the extent applicable by the terms of the Government contract, the additional rights set forth in FAR 52.227-19, Commercial Computer Software License (December 2007). Oracle America, Inc., 500 Oracle Parkway, Redwood City, CA 94065.

Hazardous Applications Notice

This software or hardware is developed for general use in a variety of information management applications. It is not developed or intended for use in any inherently dangerous applications, including applications that may create a risk of personal injury. If you use this software or hardware in dangerous applications, then you shall be responsible to take all appropriate fail-safe, backup, redundancy, and other measures to ensure its safe use. Oracle Corporation and its affiliates disclaim any liability for any damages caused by use of this software or hardware in dangerous applications.

Trademark Notice

Oracle and Java are registered trademarks of Oracle and/or its affiliates. Other names may be trademarks of their respective owners.

Intel and Intel Xeon are trademarks or registered trademarks of Intel Corporation. All SPARC trademarks are used under license and are trademarks or registered trademarks of SPARC International, Inc. AMD, Opteron, the AMD logo, and the AMD Opteron logo are trademarks or registered trademarks of Advanced Micro Devices. UNIX is a registered trademark of The Open Group in the United States and other countries.

Third Party Content, Products, and Services Disclaimer

This software or hardware and documentation may provide access to or information on content, products, and services from third parties. Oracle Corporation and its affiliates are not responsible for and expressly disclaim all warranties of any kind with respect to third-party content, products, and services. Oracle Corporation and its affiliates will not be responsible for any loss, costs, or damages incurred due to your access to or use of third-party content, products, or services.

Contents

| | |
|------------------------------------------------|----------|
| Configuring Java CAPS JMS Clients | 5 |
| Configuring JMS Clients | 5 |
| ▼ To Configure a JMS Client | 6 |
| Root Properties | 6 |
| Basic Properties | 7 |
| Redelivery Handling Properties | 9 |
| Advanced Properties | 11 |

Configuring Java CAPS JMS Clients

The following topic provides instructions on how to configure JMS clients in Repository-based projects within the Oracle Java Composite Application Platform Suite (Java CAPS). Additional information is given in the *Java CAPS JMS Reference*.

- “Configuring JMS Clients” on page 5

Additional details on the configuration process are provided in the following sections:

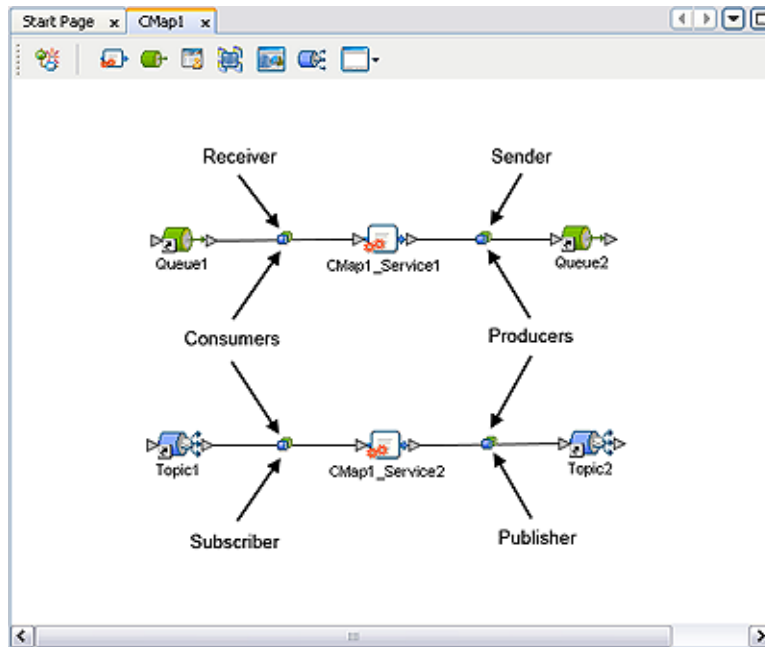
- “Root Properties” on page 6
- “Basic Properties” on page 7
- “Redelivery Handling Properties” on page 9
- “Advanced Properties” on page 11

Configuring JMS Clients

JMS clients are of two basic types: *producers* and *consumers* (or a combination of both). If associated with a queue, these become queue *senders* and *receivers*, respectively. If associated with a topic, they become topic *publishers* and *subscribers*, respectively. The configuration parameters vary according to the type of JMS Client.

Note – To reconfigure an existing JMS client, redeploy the Deployment Profile.

FIGURE 1 JMS Client Types



▼ To Configure a JMS Client

- 1 Double-click on the client icon to display the appropriate configuration dialog.
- 2 Click in the value field for each property to open the field for editing. If no menu appears, then you can enter free text.
- 3 Click OK to save your selections.

Root Properties

Properties appear in the root dialog only if the client is a *topic subscriber*. Double-clicking the JMS client icon displays the following dialog box.

FIGURE 2 JMS Client Configuration Properties Dialog Box (Subscriber)

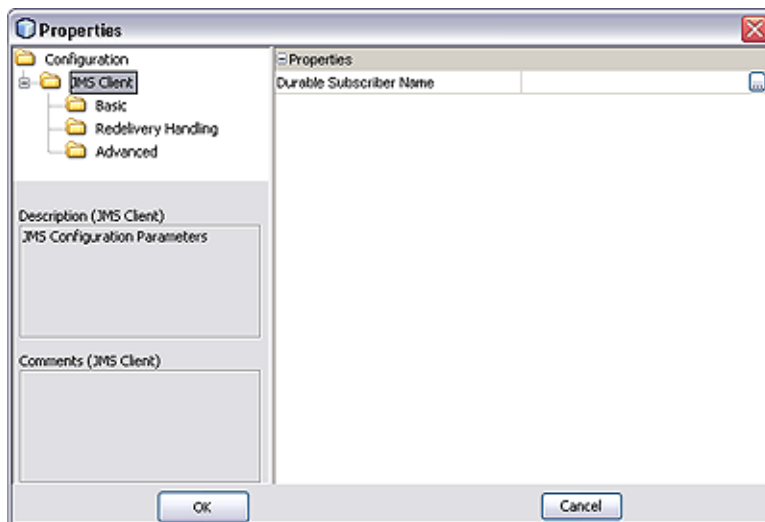


TABLE 1 JMS Client Configuration Properties

| Property | Applies to | Description |
|-------------------------|------------------------|----------------------------------------|
| Durable Subscriber Name | Topic subscribers only | Specifies the durable subscriber name. |

Note – Once set, the Durable Subscriber Name does not get autogenerated, and can only be changed manually. Copies of the Connectivity Map will also retain this name.

Basic Properties

Which properties appear in the dialog depends upon whether the client is a producer or consumer.

FIGURE 3 JMS Client Basic Configuration Properties Dialog Box (Producer)

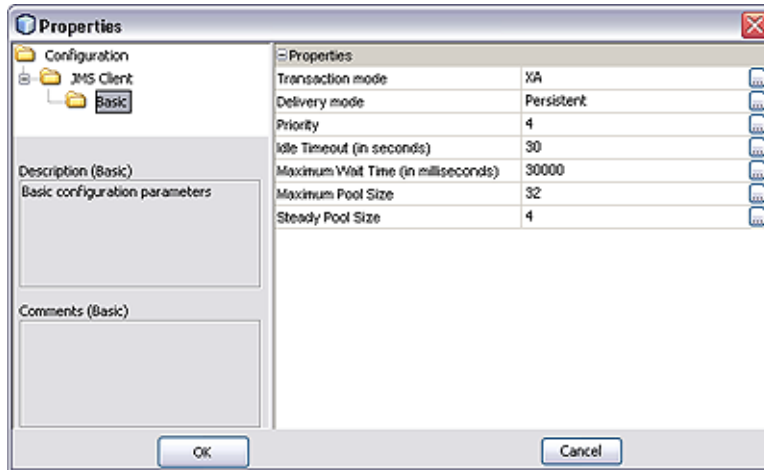


FIGURE 4 JMS Client Basic Configuration Properties Dialog Box (Consumer)

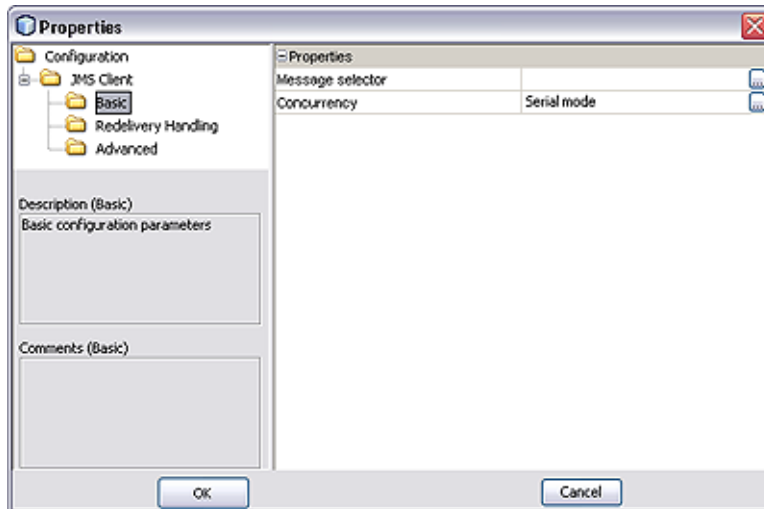


TABLE 2 JMS Client Basic Configuration Properties

| Property | Applies to | Description |
|------------------|---------------|-------------------------------------------------------------------------------------------------------------------------------------------------------|
| Transaction mode | All producers | Specifies whether messages for this session use Transacted or XA mode. For consumers, the default is always XA; otherwise, the default is Transacted. |

TABLE 2 JMS Client Basic Configuration Properties (Continued)

| Property | Applies to | Description |
|-------------------|---------------|--------------------------------------------------------------------------------------------------------------------------------------------------|
| Delivery mode | All producers | Specifies whether the messages for this JMS connection are persistent or non-persistent. The default is <code>Persistent</code> . |
| Priority | All producers | Specifies the message priority. Allowed values are 0 - 9; the default is 4. |
| Idle timeout | All producers | Specifies the number of seconds to wait before returning a connection to the pool. The default is 30 seconds. |
| Maximum Pool Size | All producers | Specifies the maximum number of connections to be made to the message server. The default is 32. |
| Maximum Wait Time | All producers | Specifies the maximum amount of milliseconds to wait for acquiring a connection before throwing an exception. The default is 30000 milliseconds. |
| Steady Pool Size | All producers | Specifies the minimum and initial number of connections maintained in the pool. The default is 4. |
| Message selector | All consumers | Specifies a message selector. |
| Concurrency | All consumers | Specifies whether the message consumers uses connection consumer or serialized processing. The default is <code>Serial</code> mode. |

Redelivery Handling Properties

Redelivery has to do with the way messages are re-delivered after previous attempts at delivery have failed. You can override the default behavior of the message redelivery process by configuring your own custom characteristics for the JMS client. Additional details are given in the [Java CAPS JMS Reference](#), including an alternate method of configuring redelivery.

FIGURE 5 JMS Client Redelivery Handling Properties Dialog Box (Consumer)

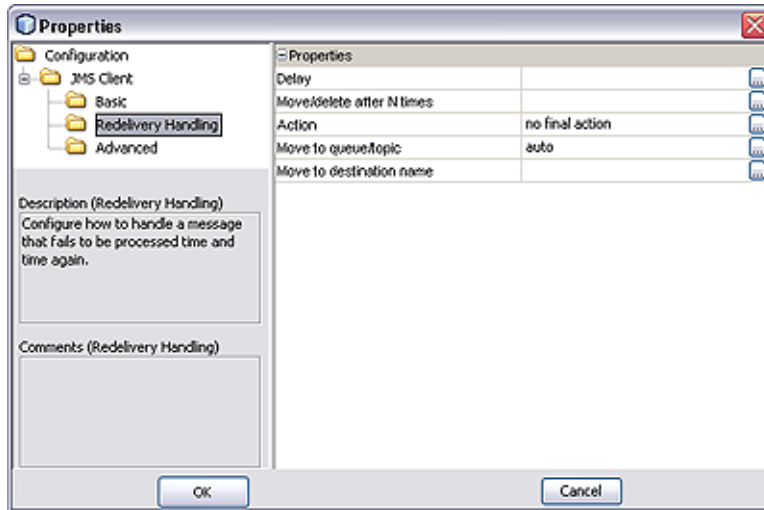


TABLE 3 JMS Client Redelivery Handling Configuration Properties

| Property | Applies to | Description |
|---------------------------|---------------|--------------------------------------------------------------------------------------------------------------------------------------------------------------------------------------------------------------------------------------------------------------------------------------------------------------------------------------------------------------------------|
| Delay | All consumers | Specifies the delay(s) to apply following a number of retries. The format is <retries : delay>, where the number of retries is counted from the original rollback and the delay time is in milliseconds. The maximum allowed delay is five seconds (5000 ms). Progressive delays can be specified by concatenating retry : delay pairs separated by a comma and a space. |
| Move/Delete after N times | All consumers | Specifies the number of retries to allow before moving (redirecting) or deleting the message. The number of retries is counted from the original rollback. |
| Action | All consumers | Specifies whether to move (redirect) or delete the message after the number of retries specified by the previous property. The default is no final action , which specifies continued retries until received. |
| Move to queue/topic | All consumers | Specifies whether to redirect to a queue or a topic , when move is selected as an action. The default is auto , which specifies redirection to a destination of the same type as the producer. |

TABLE 3 JMS Client Redelivery Handling Configuration Properties (Continued)

| Property | Applies to | Description |
|--------------------------|---------------|----------------------------------------------------------------------------------------------------------------------------------------------------|
| Move to destination name | All consumers | Specifies a name for the destination to which the message is to be redirected. The special character <\$> specifies the original destination name. |

Advanced Properties

Which properties appear in the dialog depends upon whether the destination is a topic or queue.

FIGURE 6 JMS Client Advanced Configuration Properties Dialog Box (Subscriber)

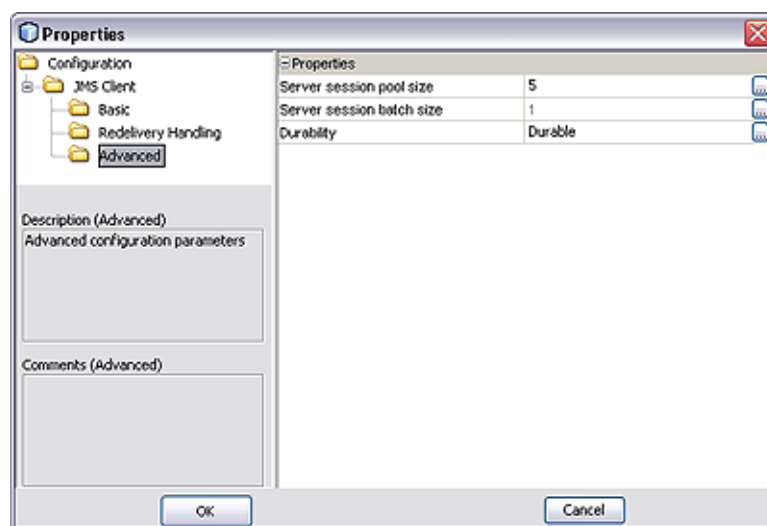


TABLE 4 JMS Client Advanced Configuration Properties

| Property | Applies to | Description |
|---------------------------|---------------|----------------------------------------------------------------------------------------------------------------------------------------------------------------|
| Server session pool size | All consumers | Specifies the maximum number of threads per ServerSessionPool to be used for concurrent processing. The allowed values are 1 - 100. The default is 5. |
| Server session batch size | All consumers | Specifies the maximum number of messages that a connection consumer can load into a server session at one time. The default value is 1, and cannot be changed. |

TABLE 4 JMS Client Advanced Configuration Properties *(Continued)*

| Property | Applies to | Description |
|-----------------|------------------------|-------------------------------------------------------------------------------------------------------------------------|
| Durability | Topic subscribers only | Specifies whether or not the subscriber to this JMS client connection is durable. The default is <code>Durable</code> . |